

SET ANEOEI

No. 392 Mar. 1920.

Aigamoi Sahnaltjiti

RIMOUSKI, P. Q.

LE MESSENGER MICMAC

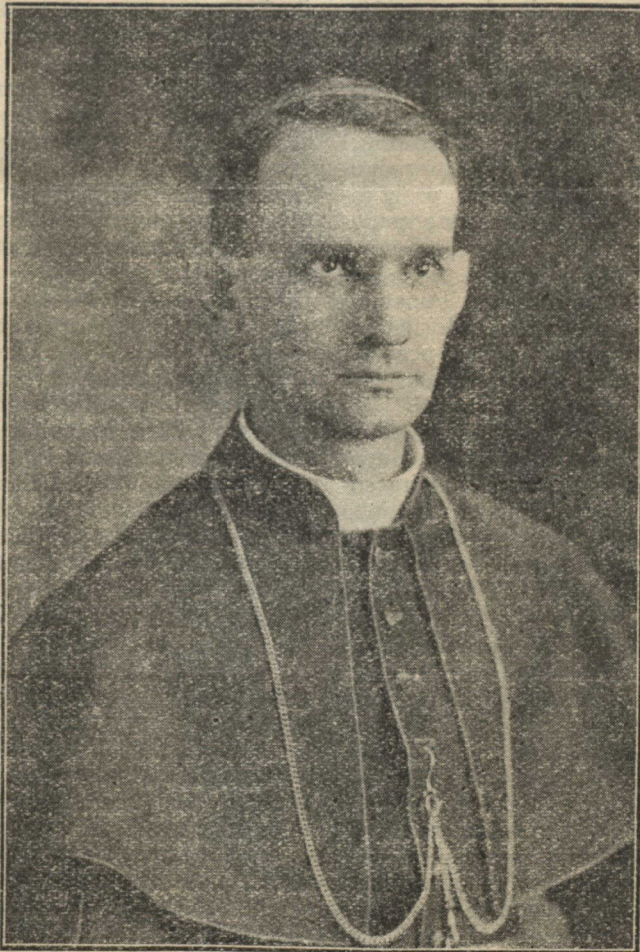
Petit Journal Mensuel publié par le R. P. Pacifique, Missionnaire, à Sainte Anne de Ristigouche, P. Q. Paraît le 1er du mois. Abonnement, 50 sous. Europe 3 frs. Prendre un ou plusieurs abonnements en faveur des sauvages pauvres.



THE MICMAC MESSENGER

A Monthly Newspaper for the Indians. Yearly Subscription 50 cts. Address all communications to the Micmac Messenger, Ristigouche, P. Q. Write for free Sample Copies to the Manager S. Vachon, Rimouski, P. Q.

PILEI OTJIPATLIAS LIMOTJGIG LEONARD TELOISIT GEPMITELMANETJ



AGNOTEMAGANTJITJEL

OEGOPEGITG — apignatjit 17 tes.—Sagmao Sôsep Tjolian oetji apogoetôg nanagigel otjit mesgig otgatalimgeoei alames, epitag teloisitag Memi Selipai nepgenag gis sag. Mset oen oeleg ola otantjitja. Gisigo Solian Plaspel smateoit.

MAOPOGEG — noeleoimgeoei tepg. 23 tes. 1919.—Gisgog epites nepeg. Matlan Los teloisit; oeli epitesoitag tan teli pgiitaogsis 74 tetotjegag, Molis Losôg sageoeiag sagmaoag otosa, alasotmelseoanetj. Nin N. G. S.

PIGTOG oalnæg—apignatjit 3 tes.—Notj, ola elgitemol mtjitjagmitjoei apôgnematingeoei otjit nigmanenag nepegag Noel Lamoliôga, oegela nanaigel.

Maoui mtoeg gesig nigea asogômigpetg epegoitga teli pasteg mgomitjel gaggpesao ag gatag môgoe nepamegig, gato mo lwin oasteoinog. Tjinemog elitotitjel tjagetjoapitjela elolamegepen 100 taosen telaotigel somalgi neotetjigela. Ntaliasotmôgôminen soel gagi gisitasig, pasig msagtagt menag igatasinog ag gotpotil na paseg telgig notateg, gato maloi angamgog lamigoôm. Nige esgematasig otagnei igana. Ponamoigos 30 tes. gisigo Piel Oelmet teoiet oiga ag Noel Lolan pegising ola pigtoga natji mitogoet ag Miel Moin. Nin M. P. S.

OAGMETGOG onamagig ponamoigos 28 tes.—Mitjoatjitjag nepegag teloisitag Piel Tjali, elgitg solioei tapoagigel otapôgnemasotioôo mtititiamitjga Pielao Glemôo ag Pigtol Gogo; tapogel alamesel, solioei neogigel. Nin T. P.

LEMOTJGIG — 25 apignatjit 1920—gisgog pilei gtjipathiasemino etli gtjipathiasoalot mesgig alasotmaganigtog. Maopigoelgig gtjipathias ag pathias ag mimatjoinog tegotemitij. Tjel Inog oetjitatij getoi nemitotij tan gôgoei teli pagalptemeg ag teli aoisio nemitasig.

PIGTOG oalnæg — apignatjit 17 tes. maltigleoimng, sagmao Matieo Plansoe elgitemoatjel Inoi pathiasel nanagigel mitjijagmitjoei alames otjit Malian Teniôg Oilliem Teni otepitema, nepegag apignatjitô neogtoniliga.

MIAOPOGEG — ponamoigos 12 tes.—Ansema nigetj gisi logoasig mesgig salite ogtjit ogtjijagmitjel Malten Losôg tan nepeg gtjigos 1919, nigetj eoôgmaoitjig eli olitasoltitjig agtaig salite elgitemeg listogotjg \$30. 2 mesgigel alamesel esgoiag aptjetjgel ogteli litasin megoaig migmag ogtji maoui alasotmelseoaneno gôgmanoag miaopogeg, Molis Losôg ogtosa; oeli epitesoitag negao ag oeli oantagi gespietg. Nin S. T. G.

MALIGIAG — apignatjit 9, 1920 Notjinen geginoatol me tan telôltieg, môgoe oen gesinogoago me ta gato nige totjioa; etabei ma mset ogteli oleina. Oellogotieg potalioel eltoegel ag eta temignatgol lôg oelaotigel, lôg na oetjatoeg pemaoagsing. Ag mo gesi gogonemo piloei agnotemagan tan tepias oigasitten ogtjit ollapetemoagen. Nin L. L.

MOLIANG — mimatjoinog oenagatotij mesgig otmôtagenoôo ogtjit angooei mesoi ntaoemgeoei sist gisna neo neogtipongeg, teloitotjig "Canadian Fur Auction Sales Co". Amsgoeseoei nigani agnotemeg ogtjit sigôgos. Oen gtoi atji gtjijitog goilotemoatj.

—:o:—

LNO MENIGOG epegoitg—apignatjit 17, 1920.—Nige togo totjio telasig istege petjipogoel nige tepitag oasteoa. Tapositjig nepegig epit ag tjinem: 1 tes. ap. epit nepeg Mali Plansoe Piel's Toma Piel's otepitema; ap 15 tes. Tjô P. Pelnal nepeg; alasotmelseoanetj. Gisigo Stanislas Plansoe gesinogoat, pathiasel tjel gisi logootjel, Ansema gisgatjeg ongatenen ositgamo. Na nogo mset oen oeleg ola otana. Nin S.L.S.

—:o:—

PAGEOIMGEOEI

Gis sag teplotaganig elogoatemeg pageoimgeoei: Tesit pa alasotmeoino gisna alasotmeoinosgo tan tetotjeg onsetoein telgitasit opagapogoatemen ogteloeitil sig tóg neogt neogtipongeg ag elp omsenemen petjili aptjijimgeoei sig tóg pageoimgeg. Tan oen pelatóg getel pa mesgig eloeoti patatog; teli msegig tjel maogig oetjiag tan meboeg ogtjit negem, istege meandotj alasotmaganigtog, tóg tli nepeg

esgemenag aniapsiog mesi otgotalot istege alasot meoino. Elp eta telgitg santeoi Maoiômi omesoi gitemen telamog teplotagan sipelio golaman maoen peli nenemog. Tet elp oli nsetemenetj oenig tetotjegig onsetoeneo. Gis sag eta militetemegsep tan teliag na, ptjilio tan tetotjeg mitjoatjitj opilto ilatasin. Na otjit gotjino papeoit teli ginoatolgos. Egitemeg eta nisgameoi oigatigenigtog tan Oestaolg ogsitgamog pemiateg teli gsalaseniga mitjoatjitjga. Lôg oelgatges megoaig ogtinineoag, igatôgsep opiten onotjioag, oesgagelmaseniga ag oelimaseniga. Petgimasseniga onagapemga mitagalalitga telimasseniga. Asitelmogo mitjoatjitj otjogoitaneon ntiningel; mo pa ogtôgôlap, telôltjig ôgo negemôo osgotemotitag oasôgeoei elegeoagi. Ansema oetji mosgatôgsep tan teli megitetges tan teli gelosoltilitji ogtjtjagamitjoag ag oagamôltilitji; ag oigomateg mitjoatjitjel ap teli maseniga onagapemga: Teliag telimolôg, mo gioansgitaôog ag telôltioôg istege mitjoatjitjig ma pigoetaoôg oasôgeoei elegeoagig. Na ogtjit tan oen teli penôgoalsitj istege ot mitjoatjitj na negem maoi espeg oasôgeoei elegeoagig, ag oen ogsoalatj neogtetjilitjel teli mitjoatjitjeollitjel ogtjit nin tan teloisi, na nin oesoalit.

Negela gôgoel nenotetgeg santeoi Maoiômi oetjategemg pôgtji ginamoeteg gesitetges otjooalan mitjoatjitj Oestaolgoigtogel gemnieotigtog, tan tjel ignemoas oegôo gisi sigentasiliteg, ag me nige telalotjig mitjoatjitjig otjipenogoei alasotmôgoômigtog. Tet gato teli tpeplotaganig tan nestoitasit tllisip gemnieoalot, tan gitjga nengel petjili aptjimgoei. Paseg eta lôg piltoitetemegsep ag pemi ôplitetemegsep tan teliag—tetotjeg onsetoein—telitetemegsep taponemig tan tesiponamg, neonte otjit pabapogôti ag neogte ogtjit gemnieoti; ntaoi pagapogoes tan oen pôgtji istoitetges sapeoti ag eloeti, tan oetjiag ontaoi patategen; gato tllisip menag gisi gemnieoigsep misôgo me atjiponâs, tjel elhiagsep glapis metlasiponateg gisna metlasiponateg tjel tapo, neo, tjel me, esgemenag gemnieoalat. Nateh oetji gtoi gepmitetemegsep aptjiti-

mgeoei, gato elpa oetjiagsep gelosit mitjoatjitj nenganemos omensamgon Oestaolgol ag otsemgon mtjtjagamitjoei oli mitjptjoei. Lôg metaeges tan maktjeotjg elpatosg gisna epites milamog nsanôgônigtog egoitatiteg ag môgoe oetji melgenateg gtjiallasotmagan, entôtis ogelosotimoôo ag pôgtji eloeoltisenig, esgemenag mesnemitioig piltoi gemnieoti. Ansema lôg oeli ginamasoltisenig ogtji maoi gelolten teli pagapogoatitjtj ag teli piltoi ilatasoltitjtj, tlia mo mset tami telianogsep. Eln tepetog oitjei teli gsegagsep temgeoei mitjoatjitjoei oagamôti tan etog gisi notjotemenesôg tepao gemnieotigtog. Elp eta anatekemeg tan natami môgoe ignemoat mitjoatjitj opagapogoen gisna omsenemen apgoaltimgoei esgemenag piltoi gemnieoigo, golaman gisi pgitgamis el-eotigtôg etog tjel mesgig: lôg eta nsanôgônig. Gato tan petjili mtoeg moaganigtog egoitatitj môgoe mitjoatjitj ignemoat oli nimamgeoei esgemenag piltoi ilatasolg alasotmôgoômig, togo teli otgotalot istege aptjetjoltitjig mitjoatjitjig, môgoe allasotmôlseoat, môgoe apôgônemoat alasotmôgoômig.

Telamogol tóg mtoôtigel oetjiagel tan aosami atjatasig piltoi gemnieoti ogtjit me oli ginamasin ag gisgatjein, gesg aoantasing oegela angitasoaganel oenagatotisenel notji ôpli ginamoatisenig Sasenistag telototjig tanig mosgatotis gemnieoti istege mtjtjagamitjoei apangitaming ag môgoe istege sapeoi nepitegemgeoei ogtjit Inoeiei menaganôti. Aona Santeoi Maoiômi melgi ginoatemolôg "petjili aptjimgoei eta sapeoig mpison oetji gsegatasigel tesigisgegoel eloeotil ag melgigneoalôg ogtjit mesgigel." Na elp migoi-molgoig gtjipathiasg tlenteoeg papeoagig teplotagan gisitotiteg oetji ignemoatis tesilitj alasotmeoino, maktjeotj gisna tetotjeg tesigisgeg ontaoi gemnieoilin, paseg taponemig tlega: môgoe mesgig eloeotinog ogtining ag gôgoatjitasitj.

Ansema tan meltamog mitjoatjitjig tjel nontitjig ignemosenig poipenegol gemnieoimgoeel, môgoe pa eitnog tan gôgoe ogtjit mitjoatjitjig gisgog goilotemoatjtj teli mseog ilalimgoei, gesg negemôo metj teli o-

Pat Hood

GLENDALE, N. S.

R.D. McPherson, Oct. 1, 1911

572

MICMAC SOLNALTJITJ

No 392 Mar. 1920

li osgötemitij temgeoei oagamöti ag gelosoti, ag ngotei nespi gsi poa-temitij na oasögeoei mitijptjeoei ogtji melgigenaneo nigetjoeel mili nshanögnigtog. Tami gato oetjiag piltoitetemen gisi peli egoeton oegela sapeoigel apögnematimgel? Ansema natel oetjiag tan taponemig telitetemeg tesiponamg, neogte ogtjit pagapogöti ag piloei ogtjit gemnieoti, mögoe oatjoi tetemeg ag mögoe gögoatji oitememeg tan teloeog tetotjeg onsetoein; me gato santeoi Maoiömi neogte tesiponamg melgimolg ogtjit gitg negela gtjiala-solmagagan, gesg neogte teli tpeletog- et, pagapogoen ag gemnieoin; ag teloei, tan tesit alasotmeoino, mögoe mengimagoi mitjoatjitj. Na tög tan telötemeg ogtjit pagapogöti, tepiponatj oen istoitetg sapeoti ag eloeoti, netna tan tepi nsetoeg ogtjit na, ngotei ogtjit gemnieoti tepi nsetoeg tan oen istoitetgel ola oasögeoei pinagan ag ogsitgamogoeoi mtjijptjeoei, ag na giasgio telötemeg tetotjeg onsetoein tan netaoagatög.

Ola siaoi oigasitöe oetjgoiet tepgenoset. Mset oen gato angitasitj ologoatemen pageoimgoeoi.

TRAIN SERVICE via INTERCOLONIAL RAILWAY

There is a daily service by the Intercolonial Railway's Ocean Limited between Montreal and Halifax. The west bound train for Montreal leaves Campbellton, at 7.40 P. M. and the East bound for Halifax at 10.45 A. M. The Maritime Express for Montreal daily except Sunday, 4.00 A. M. for Halifax daily except Sunday 2.50 A. M. The Pass, for Levis, daily except Sunday, 7.00 A. M.; for Moncton, daily except Sunday, 6.40 A. M.

Oegela gasaoög aotigeoel lapotaganel lög gesigaoatigel ag mögoe lnim aogtinogol otjit 'nog. Tepetog mögoe oen telgitasiog ogtepasin ag ogtelien tami tan mögoe oetmötömog.

Eigig ngotei tasisitjig lnog tanig oetjatotitj elogöoagan; ag me pigeoelöe tjinem tan tetli gtantoteo mimatjoagan, me atignasitj, metj giasgio pmatotj tan tellogoetj. Sag-

mao ögo mögoe gesatemog ogsepo-goalogsin.

ADVERTISING RATES

The Micmac Messenger will receive a limited amount of advertising at the following rates:—

Reading Notices, 10cts. per line, one year \$1.00. Display advertisements, 50 cts per inch, one year \$3.00. Printed in English, French and Micmac at will.

Parties wishing to reach the Micmacs of Quebec, New-Prunswick, Prince Edward Island, Nova Scotia, Newfoundland and the United States, as also quite a number of learned White People who receive it, will find this an excellent medium.

MICMAC BOOKS

Micmac Catechism — Sigentatimgoeoi—50 cts.

Sacred History in Micmac, to which is added a Short History and Liturgy of the Church—Müoi Sigentatimgoeoi—50 cts.

For schools attended by Micmac Children, write to the Deputy Superintendent of Indian Affairs, Ottawa.

Prayer Book in Micmac — a beautiful little vol. 4 x 2½ inches of 666 pp.—Alasotmagani oigatigen, gisgatteg. 50 cts. 75 cts \$1.00 \$1.50 according to binding.

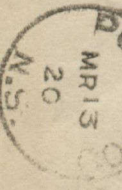
The Micmac Messenger, a Monthly Newspaper—Setaneoei Migmaoi Solnaltjitj—50 cts a year.

Base Ball Rules in Micmac — Altjematingeoel—10cts. Published under the supervision of the Big Cove Club. Write to the Manager, Big Cove, via Rexton, N. B.

Souvenir of the Micmac Tercentenary Celebration in 1910 — Migoitetmagani oigatigen — 25 cts, bound 50 cts.

Micmac Souvenir Post Cards, also pictures and medals.—Migoitetmagani Ilasgotjg, napoigigenel ag pesgemgeog—Three for 5 cts.

A curious Almanac published in 1902, with a map in color.—Sagaoei ponaneoimgoeoi oigatigan, nigemoegoe oigasitnog, eln tepetog tesigel pestioimgel oetjitasigel minoi sigentatimgoeoigtog.—25cts.



E99 M6 547 fol Reserve