

Technical and Bibliographic Notes / Notes techniques et bibliographiques

The Institute has attempted to obtain the best original copy available for filming. Features of this copy which may be bibliographically unique, which may alter any of the images in the reproduction, or which may significantly change the usual method of filming, are checked below.

L'Institut a microfilmé le meilleur exemplaire qu'il lui a été possible de se procurer. Les détails de cet exemplaire qui sont peut-être uniques du point de vue bibliographique, qui peuvent modifier une image reproduite, ou qui peuvent exiger une modification dans la méthode normale de filmage sont indiqués ci-dessous.

Coloured covers/  
Couverture de couleur

Coloured pages/  
Pages de couleur

Covers damaged/  
Couverture endommagée

Pages damaged/  
Pages endommagées

Covers restored and/or laminated/  
Couverture restaurée et/ou pelliculée

Pages restored and/or laminated/  
Pages restaurées et/ou pelliculées

Cover title missing/  
Le titre de couverture manque

Pages discoloured, stained or foxed/  
Pages décolorées, tachetées ou piquées

Coloured maps/  
Cartes géographiques en couleur

Pages detached/  
Pages détachées

Coloured ink (i.e. other than blue or black)/  
Encre de couleur (i.e. autre que bleue ou noire)

Showthrough/  
Transparence

Coloured plates and/or illustrations/  
Planches et/ou illustrations en couleur

Quality of print varies/  
Qualité inégale de l'impression

Bound with other material/  
Relié avec d'autres documents

Continuous pagination/  
Pagination continue

Tight binding may cause shadows or distortion along interior margin/  
La reliure serrée peut causer de l'ombre ou de la distorsion le long de la marge intérieure

Includes index(es)/  
Comprend un (des) index

Title on header taken from: /  
Le titre de l'en-tête provient:

Blank leaves added during restoration may appear within the text. Whenever possible, these have been omitted from filming/  
Il se peut que certaines pages blanches ajoutées lors d'une restauration apparaissent dans le texte, mais, lorsque cela était possible, ces pages n'ont pas été filmées.

Title page of issue/  
Page de titre de la livraison

Caption of issue/  
Titre de départ de la livraison

Masthead/  
Générique (périodiques) de la livraison

Additional comments: /  
Commentaires supplémentaires:

This item is filmed at the reduction ratio checked below/  
Ce document est filmé au taux de réduction indiqué ci-dessous.

10X	14X	18X	22X	26X	30X
<input type="checkbox"/>	<input type="checkbox"/>	<input type="checkbox"/>	<input type="checkbox"/>	<input checked="" type="checkbox"/>	<input type="checkbox"/>
12X	16X	20X	24X	28X	32X

**MERCHANTS' BANK OF CANADA**

Capital ..... \$5,799,200  
 Rest ..... 1,920,000

HEAD OFFICE, - - MONTREAL.

ANDREW ALLAN, of the Allan Line of Steamships, PRESIDENT.  
 GEORGE HAGUE, - - - General Manager.

BRANCHES IN MANITOBA: WINNIPEG, AND BRANDON.  
 D. MILLER, Manager at Winnipeg.

BRANCHES IN ONTARIO AND QUEBEC.

Avilla,	Ingersoll,	Ottawa,	Stratford,
Berlin,	Kincardine,	Owen Sound,	St. John's, Que.
Brampton,	Kingston,	Perth,	St. Thomas,
Chatham,	London,	Prescott,	Toronto
Galt,	Montreal,	Quebec,	Walkie
Genoaque,	Mitchell,	Renfrew,	
Gamilton,	Napanee,	Sherbrooke, Que.	

BANKERS IN GREAT BRITAIN—London, Glasgow, Edinburgh, and other points, The Clydesdale Bank (Limited), Liverpool, Commercial Bank of Liverpool.

A general banking business transacted. Letters of Credit issued, available in China, Japan and other foreign countries.

INTEREST ALLOWED ON DEPOSITS.

**ALLAN, BRYDGES & CO.**

BANKERS AND BROKERS,

339 Main Street, Winnipeg, Man

Municipal, School and other  
 Debentures negotiated.

✂️ SCRIP BOUGHT AND SOLD. ✂️

Branch Office—CARBERRY, Man.,  
 R. T. Rokeby, Manager.

INTEREST ALLOWED ON DEPOSITS.

**McBEAN BROS.,**

CITY HALL SQUARE,

WINNIPEG.

A. G. McBEAN, P.O. Box 1299 Montreal.

Commission Merchants,

AND EXPORTERS OF

GRAIN & PRODUCE.

**CIGARS!**

Smoke the brands made by

**Bryan & Co**

COLUMBUS, SELECTS & GONDOLeros

No better value in the market. Made at our  
 factory in

WINNIPEG, - MANITOBA.

Andrew Allan, President. John McKechnie, Superintendent  
 F. H. Brydges, Vice-President. H. W. Williams, Sec.-Treas.

**THE VULCAN IRON COMPANY,**  
 OF MANITOBA, (LIMITED),

BRASS & IRON FOUNDERS,  
 Light and Heavy Forgings, Engine and Boiler Work  
 Millwrighting.

GENERAL BLACKSMITHING,  
 Kinds of Machinery.

POINT DOUGLAS AV., WINNIPEG

**BANK OF BRITISH NORTH AMERICA.**

INCORPORATED BY ROYAL CHARTER.

Paid-up Capital ..... £1,000,000 Stg.  
 Reserve Fund ..... £241,340

LONDON OFFICE—3 Clements Lane, Lombard Street, E.C.

COURT OF DIRECTORS—J. H. Brodie, H. J. R. Kendall, John James Galt, J. J. Kingston, Henry E. Farrer, Frederic Lubbock, Richard H. Glyn, Geo. D. Whatman, E. A. Hoare, J. Murray Robertson.

A. G. WALLIS—Secretary.

Head Office in Canada—St. James St., Montreal.  
 R. R. Grindley, - - - General Manager.

Branches and Agencies in Canada—London, Kingston, Fredericton, N.B., Brantford, Ottawa, Halifax, N.S., Paris, Montreal, Victoria, B.C., Hamilton, Quebec, Vancouver, B.C., Toronto, St. John, N.B., Winnipeg, Brandon, Man.

H. W. BRENDON, MANAGER, MAIN STREET, WINNIPEG.  
 Agents in the United States—New York—D. A. McFavish and H. Silkman, Agts. San Francisco—W. Lawson and J. C. Welsh, Agts. London Bankers—The Bank of England—Messrs. Glyn & Co.

Foreign Agents—Liverpool, Bank of Liverpool, Australia, Union Bank of Australia, New Zealand, Union Bank of Australia, India, China and Japan—Chartered Mercantile Bank of India, London and China, Agra Bank, (Limited), West India, Colonial Bank, Paris, Messrs. Marcuard, Krauss et Cie. Lyons, Credit Lyonnais.

**H. R. IVES & CO.,**  
 MONTREAL.

Manufacturers of

**HARDWARE,**

Mrs. Pott's Cold Handle  
 Smoothing Irons,  
 (English Pattern)

IRON REDSTEADS WITH AND WITHOUT  
 BRASS MOULDINGS,

**Cribs, Opera House Chairs,**

STORE STOOLS, ETC., ETC.

✂️ Catalogues and Price Lists Furnished. ✂️

**Mitchell Drug Company**

WHOLESALE DRUGS,

17 Owen Street, - - WINNIPEG.

A Full Assortment of Drugs, Patent Medicines  
 and Sundries at Lowest Prices.

✂️ CORRESPONDENCE SOLICITED. ✂️

**Hodgson, Sumner & Co.**

IMPORTERS OF

British, French, American and German

DRY GOODS,

**FANCY GOODS,**

Smallwares,

TOYS, BEADS, &c

WHOLESALE ONLY.

Cor. Bannatyne & Princess Sts., Winnipeg.

**RICHARD & CO,**

Importers and Wholesale Dealers in

**Wines, Spirits and Cigars**

365 MAIN STREET,

WINNIPEG.

**IMPERIAL BANK OF CANADA.**

CAPITAL (paid up) ..... \$1,500,000.00

REST ..... \$800,000.00

H. & HOWLAND, President. T. R. MERRITT, Vice-President

HEAD OFFICE, TORONTO.—D. R. WILKIN, Cashier.

BRANCHES IN THE NORTHWEST.

Winnipeg, ..... C. S. Hoare, Manager  
 Brandon, ..... A. Jukes, "  
 Calgary ..... S. Barber, "  
 Portage la Prairie ..... N. G. Leslie, "

BRANCHES IN ONTARIO.

Essex Centre, Niagara Falls, Ingersoll, St. Thomas  
 Fergus, Port Colborne, Yonge St. Welland,  
 Galt, St. Catharines, Toronto, Woodstock.

Deposits received and Interest allowed at current rates.  
 Drafts and letters of credit issued available in Canada,  
 Great Britain, United States, Franco, China, India,  
 Australia and New Zealand.

Municipal and other debentures purchased.  
 Agents in Great Britain—Lloyds Barnetts & Bosanquet's  
 Bank (Limited), 72 Lombard Street, London, England.  
 Correspondents—London & Southwestern Bank, Man-  
 chester & Liverpool District Banking Co. (Limited). E.  
 W. Yates & Co., Liverpool.

**The Western Canada Loan & Savings Co.**

CAPITAL, - - - \$1,400,000.00  
 RESERVE FUND, - - \$800,000.00

HEAD OFFICES: Toronto, - WALTER S. LEE, Managing Director  
 BRANCH OFFICES: Winnipeg, - W. M. Fisher, Manager.

Moneys advanced upon Farm and City Properties.  
 MORTGAGES, MUNICIPAL DEBENTURES & SCHOOL  
 DEBENTURES purchased. Scrip held for use of Clients.  
 Clients title deeds are not sent out of the Province but  
 are lodged in the Company's vaults at Winnipeg, where  
 they may be examined at all times. Agents at all principal  
 points throughout the Province.

For further information write to the Manager of the  
 Winnipeg Branch.

NOTHING LIKE LEATHER.

**W. N. JOHNSTON & CO.,**

Importers and Dealers in

Leather, Findings, Plasterers' Hair

HIDES AND OIL.

23 and 25 Alexander St. West, Winnipeg

**DAWSON, BOLE & CO.**

REGINA, N.W.T.

**Wholesale Druggists**

Dealers in Drugs, Patent Medicines,  
 Toilets, etc., etc.

We carry the largest and Tobacconists' Sun-  
 line of CIGARS dries in the West.

WRITE FOR QUOTATIONS.

**TEES, WILSON & CO.**  
**WHOLESALE GROCERS**

AND TEA MERCHANTS.

70 ST. PETER STREET, MONTREAL.

TEAS A SPECIALTY.

Represented in Manitoba, Northwest Territories and  
 British Columbia, by

D. C. MCGREGOR, - MCINTYRE BLOCK, WINNIPEG.

**RUBLEE, RIDDELL & CO**

Commission Merchants

AND IMPORTERS OF

Green and Dried Fruits.

15 OWEN STREET,

WINNIPEG

**TO ROLLER MILLS.** For Bags—Jute and Cotton (all sizes)  
Sewing Twine, Jute or Flax.  
Stencil Inks, Fast Colors (all shades)  
Write to **HENDERSON & BULL**  
41 BANNATYNE STREET EAST, WINNIPEG.

For the past six years we have supplied and are supplying all the principal millers in Manitoba and the North west Territories with Sacks, Inks and Twines. Samples mailed and quotations given on application—all goods guaranteed equal to sample.

**"Reindeer Brand" Condensed Milk**  
Contains ALL the cream of the original milk. Full weight and absolute purity guaranteed.  
**"Reindeer" Brand Condensed Coffee**  
Combining pure COFFEES, MILK and SUGAR. One spoonful added to a cup of boiling water makes a delicious cup of Coffee all ready for use  
Manufactured by the  
**Truro Condensed Milk and Canning Company (Limited)**  
TRURO, NOVA SCOTIA.  
Sole agents for Manitoba and the Northwest, **HENDERSON & BULL, WINNIPEG.**

AMES, HOLDEN & CO., MONTREAL.

**The Ames, Holden Company,**

WHOLESALE

Dealers in

**BOOTS & SHOES,**

33 Queen Street,

WINNIPEG

JAMES REDMOND  
WINNIPEG.

A. C. FLUMERFELT,  
WINNIPEG.

**Thompson,**

**Codville & Co.,**

**WHOLESALE GROCERS,**

26 McDermott Street,

WINNIPEG.

JAS. PORTER

W. M. RONALD.

**PORTER & RONALD,**

DIRECT IMPORTERS OF

**CROCKERY**

**GLASSWARE**

**LAMPS, CHINA**

**CHANDELIERS,**

**CUTLERY,**

**SILVER-PLATED WARE & FANCY GOODS**

330 MAIN ST., WINNIPEG

**MILLER, MORSE & Co**

WHOLESALE

**Hardware,**

**Cutlery,**

**Ammunition,**

**Guns, etc.**

Princess St., WINNIPEG.

**J. H. ASHDOWN,**

Wholesale Dealer & Importer of all kinds of

**Shelf and Heavy Hardware,**

STOVES AND TINWARE,

PAINTS, OILS AND GLASS,

**RAILROAD and MILL SUPPLIES,**

The Trade furnished with our Illustrated Catalogue on application.

Corner Main and Bannatyne Streets.

**WINNIPEG.**

**Cornell, Spera & Co.,**

WHOLESALE IMPORTERS OF

**MEN'S FURNISHING GOODS,**

**Smallwares, etc.**

MANUFACTURERS OF

Overalls, White and Regatta Dress Shirts, Flannel, Cotton & Tweed Shirts

Our stock for the coming season is replete with all the Novelties. The inspection of buyers cordially invited.

CAMPBELL, SPERA & CO.,

27 PORTAGE AVENUE EAST,  
WINNIPEG.

**H. A. Nelson & Sons**

TORONTO —AND— MONTREAL

DIRECT IMPORTERS AND  
WHOLESALE DEALERS

**Fancy Goods and Toys.**

ALL THE NEWEST NOVELTIES

FROM THE

European and American Markets.

Represented in Manitoba, Northwest Territories and British Columbia, by  
W. S. CRONE.

**FIRST ARRIVAL!**

**PRIME NEW VALENCIA RAISINS**

1,000 Boxes now in Store.

ALSO NEW CANNED GOODS.

New Season

*Japans, Congous  
and Indian Teas.*

**LYON, MACKENZIE & POWIS,**

WHOLESALE GROCERS,

Cor. McDermot & Albert Sta., WINNIPEG

**Redwood Brewery**

**Fine Ales, Extra Porter  
and Premium Lager.**

Most Extensive Establishment of  
the kind in Western Canada.

**Edward Drewry,**

PROPRIETOR,

WINNIPEG, MANITOBA.

Highest cash price paid for good  
Malting Barley.

**Benny, Macpherson & Co.**

SHELF AND HEAVY

**HARDWARE,**

METALS, Etc.

388, 390 & 392 St. Paul St, MONTREAL

Represented in Manitoba and Northwest Territories by

**G. F. Stephens & Co.**

MARKET ST. EAST, WINNIPEG.

To whom all-enquiries should be addressed.

# The Commercial

A Journal of Commerce, Industry and Finance, specially devoted to the interests of Western Canada, including that portion of Ontario west of Lake Superior, the Provinces of Manitoba and British Columbia and the Territories.

Seventh Year of Publication.  
ISSUED EVERY MONDAY  
SUBSCRIPTION, \$2.00 PER ANNUM.

## ADVERTISING RATES.

1 month weekly insertion.....	\$0 30 per line.
3 months, do .....	0 75 "
6 " do .....	1 25 "
12 " do .....	2 00 "
Transient advertisements, 10 cents per line each insertion.	

Fine Book and Job Printing Departments.

Office, 4 and 6 James St. East,

JAMES E. STEEN,  
Publisher.

*The Commercial certainly enjoys a very much larger circulation among the business community of the country between Lake Superior and the Pacific Coast, than any other paper in Canada, daily or weekly. By a thorough system of personal solicitation, carried out annually, this journal has been placed upon the desk of the great majority of business men in the vast district designated above, and including northwestern Ontario, the provinces of Manitoba and British Columbia, and the territories of Assiniboia, Alberta and Saskatchewan. The Commercial also reaches the leading wholesale, commission, manufacturing and financial houses of Eastern Canada.*

WINNIPEG, FEBRUARY 25, 1889.

WALSH & Co., auctioneers, Winnipeg, are giving up business.

J. D. MCKENZIE, of the Brunswick hotel, Minnedosa, Man., is dead.

MR. SLATER has leased the hotel at Reaburn, Man., lately kept by Keeling.

W. GALLOWAY, general store, Gladstone, contemplates going out of business.

THE Icelandic population of Canada is about 5,750, of whom 4,900 are in Manitoba.

LAWRENCE McEWEN, of Winnipeg, will open a jewelry store at Lethbridge, Alberta.

THE *Mining World*, is the name of a new journal proposed to be started at Port Arthur.

THE contract for the new Bank of Montreal building at Calgary, to cost \$20,000, has been let.

A NEW weekly paper, the *Critic*, has made its appearance at Prince Albert, Saskatchewan Territory.

LAFFERTY & MOORE have opened a private bank at Regina, Assa., with W. R. Robertson, as manager.

BLYTH & GEMMELL, tanners, of Selkirk, Man., despatched a shipment of leather to Ontario last week.

DAVID KERR, farmer, near Carberry, Man., has bought out the carriage shop of Wm. McMillan, of Carberry.

THE mildness of this winter in the west will be seen from the following item, from the Lethbridge, Alberta, *News* of Feb. 14th:—The river at this place is now fordable, the only ice being a little on the edges.

A FIRE in the boiler room of the Grand Union hotel, Winnipeg, last week, did damage to the extent of a few hundred dollars.

THE Norfolk House, Winnipeg, has been leased by P. O'Connor, and the name has been changed to the Nicolet House.

CHAS. H. STRUTT & Co., dry goods, Port Arthur, have closed business at that place, and are moving the stock to British Columbia.

S. RIPSTEIN, general dealer, Deloraine, Man., has closed up his business at that place and shipped the balance of his stock to Winnipeg.

MITCHELL & BUCKNAL, of the Millwood flour mill, have opened a flour and feed store at Russell village, Man., with J. J. Moon in charge.

SIR CHARLES TUPPER was elected a director of the Bank of British Columbia, at a meeting held in London, England, on Wednesday last.

G. P. PHILLIPS, machinist, of West Selkirk, is shipping the machinery and tools of his machine shop to Red Portage, where he intends to pursue his business in future.

T. W. GOULDING, has received the appointment of manager at Winnipeg for the Great Northwestern Telegraph company, the position recently vacated by Mr. McDougall.

PORT ARTHUR is seeking for provincial legislation to empower the corporation to pass by-laws to exempt from municipal taxes the property of any railway company within the town.

APPLICATION will be made for the issue of supplementary letters patent to the Manitoba Free Press Company, increasing the capital stock of that company to \$133,500 by adding to the original capital 335 shares of \$100 each.

THE Port Arthur *Sentinel* plant has been moved into more commodious and convenient premises, which is a sign of prosperity. The *Sentinel* is a very creditable paper for a town of the size of Port Arthur, and it is deserving of a generous support.

WELLS & DAWSON, hardware, Port Arthur, have dissolved partnership. J. L. Wells, who carries on business in the same line at Winnipeg, will continue the Port Arthur business also. A. Dawson will open a hardware store at Sault Ste Marie.

THE bridges along the N. W. C. & N. Co's railway (Galt road) are being reconstructed and widened to standard gauge width. It seems from this that the road, which is a narrow gauge one, will certainly be widened to the standard width, as has been recently reported.

THE Dominion Government is evidently determined to provide first-class harbor accommodation at our Lake Superior ports. The estimates contain \$133,000 for harbor improvements at Port Arthur and Fort William. A large grant has also been made for a new post office at Port Arthur.

Two new papers are talked of for Winnipeg. One, if started, will be known as *the Mirror*, and will be a weekly society and gossip paper. The other will be known as *The Western Traveller*. It will be published daily, principally for gratuitous distribution on the trains, and will be mainly an advertising medium. C. W. Handscomb, of the *Call*, will publish the *Mirror*, and the *Traveller* will be published by G. H. Ham, F. A. Row and G. H. Campbell.

THE stock of W. Uglow, stationery and fancy goods, Winnipeg, was badly damaged by fire last week. Loss about \$4,000; fully insured.

M. C. KELLY, fruits, Winnipeg, had his furniture in his residence above the store and also his stock, damaged by fire to the extent of about \$300, last week. Covered by insurance.

THE Dominion Government has decided not to adopt the proposed reduction in letter postage rates to two cents at present. It is proposed, however, to increase the maximum weight for which a letter may be sent for three cents, from one half ounce to one ounce. A bill will be introduced to this effect during the present session of Parliament.

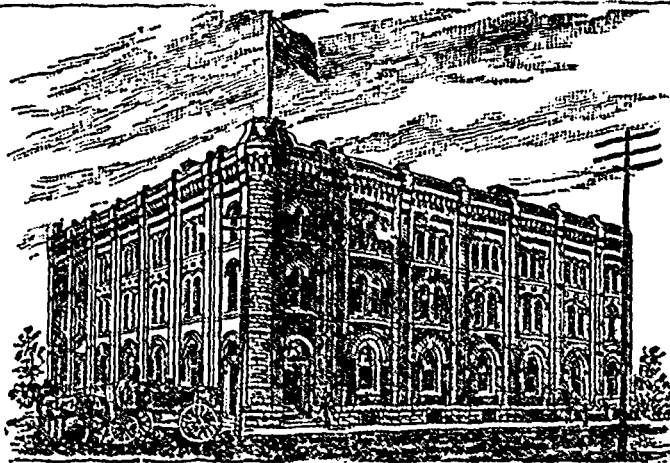
PAMPHLETS are the order of the day. The latest one is issued by that enterprising body, the Regina board of trade. It is entitled: "A Few Facts Respecting the Regina District, in the Great Grain Growing and Stock Raising Province of Assiniboia." The pamphlet contains a large amount of information concerning the resources, climate and advantages of the district, together with the actual experience of settlers. A new map of Assiniboia accompanies the pamphlet.

At a recent meeting of the Port Arthur board of trade, seven new members were recommended to the board for election. The council recommended that \$150 be granted J. A. Carman, for his proposed book, "Port Arthur Illustrated," on condition that the town council give \$300. Dobie gave notice that at the next meeting of the council he would move that as soon as the membership number 75, an additional entrance fee, to be fixed by the council, be charged joining members, and that in case where more than one member of a firm belongs to the board the fee for the second be \$7 and for the third \$5.

A TELEGRAM from Ottawa on Wednesday says: The railway committee met this morning and passed the Alberta Railway and Coal company's bill. This is promoted by Sir Alexander Galt, who has Sir Roderick Cameron associated with him. The line runs from Lethbridge to the boundary, sixty miles; thence through Montana to Helena. Sir Alexander Galt says the company has all the powers to build in Montana. The capital had been arranged for and the work would commence in May. The company already has contracts for two hundred tons of coal, to be sent to Montana. The gauge on the Galt road from Lethbridge to Dunmore will be changed, and the two lines will work together.

THE Port Arthur *Sentinel* says:—Money matters are stringent in town at the present time. There are several facts to each of which some portion of the said stringency can be traced. First the C. P. R. is not spending nearly so much money here as last winter. The small grain crop is accountable for some of that but the light fall of snow has made a great difference in the number of hands employed. Perhaps the greatest cause for the stringency is the fact that about \$20,000 has been withdrawn from circulation by the collection of that amount of taxes. This coming at a dull time of the year, and when such a large amount of commercial paper had to be met, has greatly aggravated what at the best would have been a tight time.

GOODS SOLD TO THE  
TRADE ONLY.



GOODS SOLD TO THE  
TRADE ONLY.

## G. F. & J. GALT,

### DIRECT IMPORTERS

**TEAS, SUGARS, WINES, LIQUORS and GENERAL GROCERIES**  
CORNER PRINCESS AND BANNATYNE STREETS, WINNIPEG, MANITOBA.

#### Grain and Milling.

The new roller grist mill at Treherne, Man., has been completed and put in operation.

Geo. Goodfellow, of Fort a la Corne, Sask. Territory, is establishing a grist mill, to run by water power, in that northern settlement.

A movement is on foot to establish a small roller mill at Broadview, Assa. Inducements will be offered to any person who will undertake the enterprise.

The council of Elton municipality, Man., will be asked to submit a by-law offering a bonus of \$5,000 in aid of the erection of a 100 barrel flour mill at Douglas, in the municipality.

Grain freights from California are not quite as firm, but tonnage is still scarce. The rate on grain from San Francisco to the United Kingdom is from 40s. to 42s. 6d. From Portland, Oregon, to Great Britain the rate is 47s. 6d. to 50s. This is via Capo Horne.

The Willford & Northway Manufacturing Co., milling machinery, Minneapolis, held its annual meeting Tuesday, at which the old officers were re-elected, as follows: President, J. L. Willford; vice-president, J. Silas Leas; secretary and treasurer, W. P. Northway.

Notice is given that a by-law to raise the sum of twenty-five hundred dollars by debentures payable in twenty years, for the purpose of aiding in the erection of a grist mill at Russell village, Man., will be voted on by the ratepayers of Silver Creek municipality on the 12th March.

Brandon Times: It has been noticed that some of the farmers have been trying to get ahead of the grain buyers by putting No. 1 hard wheat in the top of the bag and having the rest of the bag filled with inferior wheat. The grain buyers have agreed to make an example of the next caught at it.

The News, Vancouver, B. C., says: The members of an eastern firm owning the Montague & Silver Creek mills, at Whitehall, Michigan, are in the city. They propose to erect a roller mill of considerable capacity, and are desirous of ascertaining if the city will offer them any inducement to start their enterprise here.

A copy of the *Millers' Review*, published at Philadelphia, has reached this office. It contains a summary of the report of the Winnipeg Grain Exchange on the crop of Manitoba for 1887; also a short article on the Manitoba wheat crop of 1888. Reference is also made to Hastings Bros. & Co.'s proposed mill at Port Arthur, the latter place being located in Manitoba.

The total yield of all field crops in the Province of Ontario last season was 143,876,580 bushels, obtained from an acreage of 5,023,626; while in 1887 the yield was 109,830,959 bushels from an acreage of 4,875,802, an increase in 1888 of 24,045,622 bushels over the harvest of the previous year. The only decrease in 1888 was in fall wheat, which was 609,824 bushels short of the yield in 1887, but the number of acres sown for this wheat in 1888 also decreased 71,206.

#### Lumber Cuttings.

The Fader Bros' new mill at Vancouver, B. C., has been completed and put in operation.

Machinery for the saw mill at Scandinavia, Man., north of Minnedosa, to replace the mill destroyed by fire recently, has arrived.

The House committee on ways and means at Washington, has directed a favorable report on the bill allowing within certain boundaries in Minnesota, the sending of logs cut within these boundaries to Canada, have it sawed and returned without payment of duty.

The Vancouver News says:—Angus Fraser has a raft of splendid spars in Howe Sound, which he is bringing into port with the intention of shipping them by rail to New York, where they will be used as ship masts. Each stick is 100 feet long and 24 inches in diameter at the top.

Ackerman Bros., contractors, Westminster, B. C., have decided to start a planing mill and cash and door factory, and have purchased property at the place named, for the purpose. A full plant of machinery, including engine and boiler, has been ordered from Cowan & Co., of Galt, Ont., and it is expected that the new mill

## JAMES PYE, FLOUR MILL BUILDER

CONSULTING ENGINEER, &c.  
218 Third Avenue South,  
MINNEAPOLIS, - MINN.

#### A Manitoba Testimonial.

PORTAGE LA PRAIRIE, Dec. 8th, 1887.

JAMES PYE, Esq., Minneapolis, Minn., U.S.A.:  
DEAR SIR, - In handing you our check for \$1,301.24, in full for balance of your contract for building and enlarging our mill, we without solicitation wish to state, that you have done your work in a manner highly satisfactory to this company. The capacity which you guaranteed at 275 barrels, we find considerably under the mark, as we are at present making over 300 barrels, and the quality of the flour is all that we could wish for. Some of our largest purchasers frankly tell us, it is equal to any flour made in either Minnesota or this province. The yield also we find very satisfactory. We must also bear testimony to your pleasing and gentlemanly manner, and your willingness at all times to meet our wishes. This has made our business relations pleasant and we can honestly say, that we recommend you to any person, requiring anything in the mill building or mill furnishing line. Wishing you the success that straight dealing merits, we are  
Yours very truly,

THE PORTAGE MILLING CO.  
Jas. MacLennan, Managing Director.

will be completed and in active operation by the first of May. A small saw mill will also be built to run in connection with the factory.

Only one shipload of lumber was exported from British Columbia during January. This was from the Hastings saw mill, Vancouver, destined for Callao. Robt. Ward & Co., of Victoria, say in their last monthly circular:—“Freight rates are easier. The volume of business transacted has also been very small in lumber vessels. For lumber very few charters have been written, and shipments from both Puget Sound and Burrard Inlet have been smaller than for a long time past. This is partly on account of the scarcity of tonnage and partly because there is a reduced call for lumber from Australian markets. The freight rates on lumber are as follows:—Burrard Inlet to Hobson's Bay, 60s per 1,000 feet; Melbourne Wharf, 62s 6d.; Burrard Inlet to Sydney, 50s; Burrard Inlet to Shanghai, 60s; Burrard Inlet to west coast South America, 50s to 55s per 1,000 feet.

#### Fur Trade Notes.

As an evidence that Nova Scotia has not ceased to be a fur breeding province, it is stated that one hunter sold in Truro recently 300 muskrat skins, 79 red foxes, 20 coons, 11 minks, 10 skunks, 4 bears, 3 loup carrier, and 1 otter.

The Canadian Gazette, of London, England, says: The Hudson's Bay Company's sale of beaver was held on the 23rd inst., when 68,723 skins were sold, as compared with 101,097 in January, 1883. In consequence of the decreased quantity and keen foreign competition, prices advanced about 15 per cent. A smaller quantity of Musquash was also sold at much better prices than those of last year.

The number of animals killed in Siberia every year for their fur is enormous. At the last Summer fair of Irbit, which is a market for only part of the furs exported from Siberia, no less than 3,180,000 furs of squirrels were offered for sale. Of these, 1,018,000 were killed in the forests of Yeneseisk, 455,000 in the Altai Mountains, 200,000 in Yakutsk, and 300,000 in Transbaikalia. A considerable num

**W. D. PETTIGREW & CO.**

IMPORTERS AND WHOLESALE DEALERS IN

**Shelf Hardware**

Mill Supplies, Paints, Oils, Glass, Putty, etc., etc.

TINWARE, GRANITWARE AND HOUSE FURNISHING GOODS.

—WHOLESALE AGENTS FOR—

**WM. BUCK'S STOVES.**

CORRESPONDENCE SOLICITED.

528 Main Street, - WINNIPEG.

lot of the furs of squirrels killed in the last two provinces are exported directly both to China and Russia, without passing through Irbit. It is worthy of note that this year there was considerable decrease in the furs of the black squirrel. Only half a million of these furs were brought to the fair, as against more than a million in 1887. Of other furs there were 11,000 blue fox, from Obdorsk and Berzoff; 140,000 marmot, chiefly from the Altai; 30,000 polecat, 10,000 badger, 1,300,000 hare, 2,000 fox, and a number of bear and fox skins.

**Personal.**

W. F. DOLL, wholesale jeweler, Winnipeg, returned from a business trip to New York and the east last week.

M. McMANUS, of Turnbull & McManus, wholesale sash, doors, etc., Winnipeg, returned from a business trip south last week. He was as far as Dubuque, Iowa.

**How to Cook Dried Fruits.**

If you will consider that dried fruit is fresh fruit, with the water dried out of it and more or less dirt gathered upon its surface, two things will occur to you to do, to make it become something like fresh fruit. First wash it thoroughly, using if necessary several changes of water, but beware and get the fruit clean. Then put it to soak in clean water, completely covering the fruit, and an inch of depth above it. Soak at least twelve hours, and if the fruit does not plump out very full, keep it in until it will swell no more. Don't change the water in soaking and cook in the water the fruit was soaked in. Boil gently for twenty minutes, then set on back of stove to simmer until the fruit is done and tender, using sugar in cooking according to taste.—*The Baker.*

SIR R. W. CAMERON has purchased from the Northwest Coal and Navigation Co., another block of 50,000 acres of land near the mouth of the Little Bow River, where he already has a large quantity. "We understand," says the Lethbridge News, "it is his intention to start a large horse rancho on the place and will very soon bring in some of the best horses to be procured in the market. He has also invested heavily in town property, having bought something like \$50,000 worth."



**TASSE, WOOD & CO.**

Manufacturers of

**Fine Cigars,**  
MONTREAL.

Our Brands: { Reliance Terrior,  
Mikado and General Arthur.

Are unsurpassed by any in the Dominion

Ask your Wholesale Merchant FOR THEM.

ENGLISH OAK TANNED

**LEATHER BELTING**

LACE LEATHER, Etc.

Cotton and Woollen Mill Supplies.

**JAMES LESLIE,** JUNCTION OF GRAIG AND ST. ANTOINE STREETS,

P. O. Box 996.

MONTREAL.

S. R. PARSONS. HENRY BELL. W. E. HAZLE

**PARSONS, BELL & CO.,**

**Wholesale Paper Dealers**

—AND—  
**GENERAL STATIONERS.**

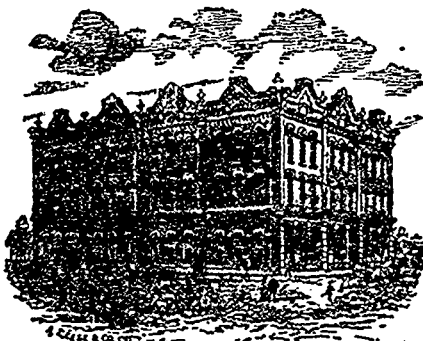
AGENTS

**Canada Paper Company,**  
Manufacturers Printing, Wrapping & Writing Paper &c., Montreal and Windsor Mills, Quebec.

**Alex. Pirie & Sons,**  
Manufacturers Fine Stationery, Aberdeen, Scotland.

**M. Staunton & Co.,**  
Manufacturers Wall Papers, Toronto.

GERRIE BLOCK, PRINCESS STREET,  
WINNIPEG.



**HOT AIR FURNACES**

Estimates given on application.

**THE E. & C. GURNEY CO.,**

OFFICE: Cor. Alexander and Princess Sts.,  
WINNIPEG.

**McALPINE TOBACCO CO.**

TRY OUR

**"WOODCOCK"**

SMOKING IN

**10c. and 25c Plugs.**

The Sweetest and Coolest Smoke of any Tobacco in the market; also our

**"OLD CROW"**  
CHEWING IN 10c PLUGS.

The Highest Grade of BLACK GOODS made in Canada.

WORKS: NEW YORK CITY, AND  
**ESPLANADE, - TORONTO.**



**THE CLARENDON.**

The only FIRST CLASS solid brick hotel in Winnipeg. Eleg. Dining Room.

TERMS MODERATE.

BENNETT & CO., PROPRIETORS.

# The Commercial

WINNIPEG, FEBRUARY 23, 1898.

## DEVELOPING BRITISH COLUMBIA.

The railway mileage at present in operation in the Pacific Province consists of the main line of the C. P. R., from the Rocky Mountains to Vancouver, 520 miles; and the Esquimalt and Nanaimo railway, on Vancouver Island, connecting Victoria and Esquimalt naval station with the coal mines of the Nanaimo district, length about 75 miles. There is also the Westminster branch of the C. P. R., which is about eight miles long, from Westminster to the junction with the main line.

Some new railway work is likely to be done in British Columbia this year. A railway to connect Westminster with the cities of Puget Sound and United States railways, will probably be pushed through this year. Westminster has voted a large bonus to this road, and is to secure the workshops, etc. The trains will be carried across the river by a railway ferry steamer, though it is ultimately intended to bridge the river. Some preliminary work has been done on this road, from New Westminster southward. It is also probable that the C. P. R. Co. will build a road from its main line east of Vancouver, southward to connect with the Pacific coast railway system of the United States.

On Vancouver Island there is a probability that the Island railway may be extended northward at no distant date, as far as Comox, a distance of about 70 miles. Very extensive coal mines are being opened at Comox, and a railway about 12 miles long has been built from the mines to the harbor. This railway has been completed since the first of the present year. Docks and works at the Comox mines are being established on a scale large enough to handle 2,000 tons per day. It is also proposed to extend the Island railway southward from Victoria to Beecher Bay, the extreme southern point of Vancouver Island, with the object of connecting by ferry, with a railway in Washington Territory.

Regarding the proposed railway from the main line of the C. P. R. southward into the United States, it is now practically an established fact that this connection will be built. Within the last few days, the C. P. R. Company has called for

tenders for the construction of a bridge across the Frazer river, near St. Mary's Mission. This bridge will form an important portion of the work of building the road. St. Mary's Mission is a point on the main line of the C. P. R., about 42 miles east of Vancouver. The road will leave the main line near this point, and run southward to the United States boundary, a distance of about 15 miles. At the boundary connection will be made with the Seattle, Lake Shore, and Eastern Railway, which road is being constructed northward from Puget Sound, toward the boundary. It is understood that the C. P. R. Co. has an agreement with the Seattle and Lake Shore, providing for the completion of the road by August next. This road will give the C. P. R. direct connection with the railway system of the Pacific coast states, and with the cities on Puget Sound. The Seattle and Lake Shore will simply form a branch of the C. P. R., and it is further hinted that C. P. R. capital will build not only the Canadian, but also mainly the portion of the road in the United States.

It has been recently reported in what seems a reliable way, that the Northern Pacific Company has secured the franchise of the proposed road to run southward from New Westminster, and that the N. P. Co. will build this road, not only to Westminster but on to Vancouver. The proposed southern connection of the C. P. R. will bring the latter road into direct connection and competition with the Northern Pacific at its terminal points on Puget Sound. It is therefore quite probable that the Northern Pacific will endeavor to get even, by gaining an entrance into the two western termini (Vancouver and Westminster) of the C. P. R. The report that the Northern Pacific has secured control of the Westminster Southern and connection seems very probable. At any rate, it is pretty certain that British Columbia will have connection with the railway system of the United States, by two different roads, before a great while.

There are several other railway enterprises talked of in British Columbia, in the interest of which charters have been procured or applied for, but no very definite announcements have been made concerning these schemes. The lower Kootenay country contains some good agricultural and pastoral lands, and is also claimed to be very rich in minerals, and several of the railway schemes are

projected to reach this region. It is also reported that the C. P. R. will run a branch southward through the Kootenay country, but this may be only report.

There are a number of fine navigable water stretches in this portion of British Columbia, on the Columbia and Kootenay rivers and lakes. The value of these waters could be very greatly increased by some outlay in connecting the different waters, so as to provide a more continuous system of navigation. Some Government grants have been made to improve the navigation of these inland waters, but a good deal yet remains to be done. The reports as to the mineral wealth of the Kootenay country are almost fabulous in their nature, and if the region approaches to any extent its reported value as a mineral and agricultural country, the expenditure of a little money in opening up the region would be advisable.

In connection with navigation, however, the most important work in the province is the improvement of the Fraser river. Here is a splendid river, navigable for ocean ships, but requiring some improvements at its mouth. The Dominion Government has acted niggardly in regard to the improvement of the mouth of the Fraser river, and year after year has been allowed to pass away, with the accomplishment of very little. This year a paltry \$10,000 has been placed in the estimates for Fraser river improvements. The importance of the trade interests on the Fraser demand that no time should be lost in rendering the river safely navigable at its mouth for ocean-going ships, and it is hoped the Government will bring down an estimate in keeping with the importance of the work.

Another important feature in the development of British Columbia, is the establishment of the first smelter in the province. This smelter is located at Vancouver, and it was completed and put in operation last week. The establishment of the smelter is largely due to the enterprise of the people of Vancouver, who voted a large sum of money to assist the enterprise. It will mark a new era in the mineral development of the country. As British Columbia is largely a mineral country, the establishment of this first smelter is a very important matter. Heretofore there has been no encouragement to develop quartz mines, especially of the lower grade ores, owing to the cost of getting the ores to smelters in the United States. Now, with a smelter at hand

quartz mining should be given a great impetus.

The development of the lumbering, fishing and coal and general mining industries of British Columbia were referred to at length in these columns a few weeks ago.

### PORT ARTHUR BOARD OF TRADE.

The Port Arthur board of trade appears to be a thoroughly energetic institution. A summarised report of the late annual meeting of this board was published in the last issue of THE COMMERCIAL, and a full statement of the annual report of the board has since reached this office. The Port Arthur board has been in existence about three years, and the report presented by President Thos. Marks at the last meeting was therefore the third annual report. Until very recently this board was the only institution of the kind in the vast district of Algoma, extending from the eastern boundary of Manitoba eastward nearly a thousand miles, and comprising the larger portion of the province of Ontario. Here in Manitoba we are inclined to think of Ontario as composed of that portion of Canada stretching from about Ottawa southward to Windsor, but in reality this is considerably less than one half of the great province of Ontario. The old settled portion of Ontario is only about 500 miles long, measuring from the north-east to the extreme south-western boundary, whilst the new portion is nearly double that distance in length, and proportionately large in breadth. The Port Arthur board of trade has been the only commercial body in this vast region until very recently. A short time ago a board was organized at Rat. Portage, situated near the western boundary of the district of Algoma. Sault Ste. Marie is one of the most important places in Algoma, but up to the present time no board has been organized there. The Port Arthur board urges the Sault Ste. Marie merchants to organize a board, no doubt with the idea that the boards could work together to the advantage of the district. On this point the president in his address says:

"In a new district, such as Algoma is, it is only by united and concerted action that our necessities and requirements may be made known, not only to the people of older Canada, but to the respective Governments with whom we have to come in contact. It certainly must be very gratifying to you to notice the weight and influence which this Board already possesses."

Situated at the head of the Canadian system of navigation on the great lakes,

the Port Arthur board has always taken a great interest in matters pertaining to the navigation of the St. Lawrence system. It is therefore not surprising that the first matter taken up in the annual report is the question of the enlargement of the canals. The board has persistently urged the enlargement of the canals, so that a vessel drawing fourteen feet of water could pass through from Port Arthur to Montreal. This is a question which is of as great interest to Manitoba as to Port Arthur. The main advantage from the enlargement of the canals would be in carrying merchandice from Western Canada to and from the sea-board. It is asserted that with the proposed improvements to the canals, wheat could be carried from Port Arthur to the sea-board at 5 cents per bushel, including all charges, and that general merchandice could be laid down at Port Arthur, from Montreal, at \$1.50 to \$3.00 per ton. This would mean a very great saving to all Western Canada, and especially to the grain producers of Manitoba and the Territories. While discussing the canal question, the Port Arthur board urges the complete abolition of all canal tolls, both upon Canadian and United States shipping passing through the canals. The canal question is one which may well interest boards of trade in Manitoba, as well as at lake ports.

Extended reference is made in the report to lake shipping, and it is said that rates were very low last season, grain having been carried from Port Arthur and Duluth to Kingston, at as low as 3½ cents per bushel, or about 2½ cents nett to the vessel, for carrying grain 1,000 miles. This would be about equal to \$15 per car load, whereas the C. P. R. grain rate for about the same distance is \$79.20. This, as the report says, is sufficient to show the great advantage of water over railway carriage.

The increasing importance of Port Arthur as a shipping point is shown in the report. In 1887 the number of arrivals at the port were 276, and in 1888 the number increased to 458. This includes arrivals of all kinds of lake craft.

Extended reference is made in the report to mining, which is such an important interest in Algoma. The establishment of a School of Mines for the district is urged upon the provincial government, and assistance is also asked for the establishment of smelting and reduction works, which are said to be a

necessity. The Dominion Government has made a precedent in bonusing the pig-iron industry, and it is claimed that this is a reason why the provincial government should endeavor to develop the more precious metals of Algoma.

Referring to the lumber industry of Port Arthur, it is complained that freight rates to Manitoba points are too high. The report says:

"As it now stands, the rate on lumber from Rat Portage to Winnipeg is fifteen and a half cents per hundred pounds; from Port Arthur twenty-seven cents. Our shippers, therefore, have to compete with the Rat Portage dealers, and are handicapped by a differential rate of eleven and a half cents per hundred, or from forty to fifty dollars per car. This Board should make every effort to have this condition of things changed."

It is noted that almost every year a large amount of valuable timber country is destroyed by fire.

The proposal to utilize a water-power at Port Arthur is dealt with. It is claimed that there is a very valuable water-power which can be utilized, equal almost to the power furnished by the Mississippi river at Minneapolis. A scheme is on foot to utilize this water-power.

The desirability of carrying out the construction of the Port Arthur, Duluth and Western railway is strongly urged, in the interest of the development of the mineral wealth of the region especially. Strenuous efforts will be made to induce the Ontario Government to aid the enterprise. A number of other matters are referred to, which are of less general importance. The report, in conclusion, advises that some effort should be made to secure new quarters for the board, either by leasing or building, where a permanent exhibit of the mineral, timber and agricultural products of the district, could be kept on view.

### MORE PROTECTION WANTED.

There is war in the textile trade of Eastern Canada, between the manufacturers and jobbers. The manufacturers of woollen goods have had a deputation at Ottawa, asking for an increase in the duty on woollen goods, in order to further protect home manufacturers. They want the duty increased from 20 to 25 per cent. *ad valorem*, and the specific duty from 7½ cents to 15 cents per pound. The dry goods jobbers, who see that their import trade would be injured by a further increase in the duties, have protested against the proposals of the woollen goods manufacturers. Home clothing manufacturers would also be seriously affected by an increase in the duty upon cloths, and they have also had a deputation at Ottawa, demanding an increase in the duty on clothing, in proportion to the proposed increase in the duties upon cloths, should the latter be carried into effect.



**White & White,**

(LATE WHITE, JOSELIN & CO.,)

7 Wellington Street West, TORONTO.

Laces, Embroideries, Cur-  
tains, Gloves, etc.

WHITE & WHITE.

**Wm. Ferguson,**

WHOLESALE

**WINES- LIQUORS AND CIGARS**

Permit Orders Promptly Executed

8th Street, - - Brandon

**JAS. McCREADY & CO.,**

WHOLESALE

Boot and Shoe Manufacturers,  
MONTREAL.

SAMPLE ROOMS, 496 MAIN ST. WINNIPEG  
W. WILLIAMS, AGENT.

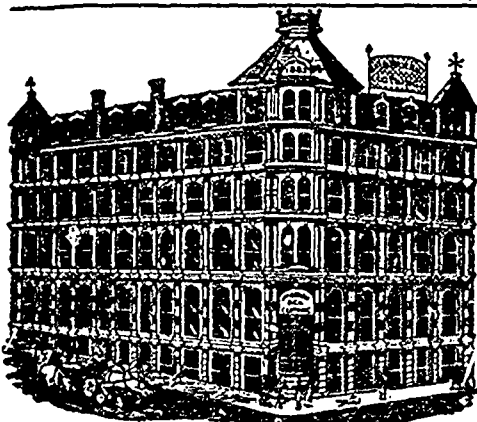
**MUNROE & CO.,**

Wholesale Dealers in

Wines, Liquors and Cigars

OF THE BEST BRANDS

9th STREET, - BRANDON



HEAD OFFICE AND MANUFACTORY:  
VICTORIA SQUARE, - MONTREAL.

Furniture and Undertaking House.

**M. HUGHES & CO**

WHOLESALE & RETAIL

FURNITURE WAREHOUSES, 285 Main St  
UNDERTAKING ROOMS, 517 Main Street

TELEPHONE No. 413.

Closest prices given to dealers

Satisfaction guaranteed in every  
department.

**LYMAN BROS. & CO.,**  
WHOLESALE  
**CHEMISTS AND DRUGGISTS.**

Every requisite for the Drug Trade  
promptly supplied.

TORONTO, ONT.

**KIRKPATRICK & COOKSON**

Established 1800,

MONTREAL,

Commission Merchants,

FLOUR, GRAIN, BUTTER, &c.

Consignments and Orders solicited

**STRANG & CO.**

Wishart Block, Market St. East,

**WHOLESALE GROCERS**

AND DEALERS IN

Provisions, Wines and Liquors,

WINNIPEG.

**W. E. SANFORD M'FG CO., Ld.**

MANUFACTURERS OF

**CLOTHING**

45 to 49 King St., Albert Street.

HAMILTON & WINNIPEG.

**JAMES O'BRIEN & CO.,**

MANUFACTURERS OF

**CLOTHING**

—AND—

Importers of GENTS' FURNISHINGS,

HATS, CAPS AND FUR GOODS, GLOVES  
AND MITTENS.

72 and 74 Princess St., Winnipeg

**MONTREAL BRASS WORKS.**

MONTREAL, P.Q.

**Robt. Mitchell & Co**

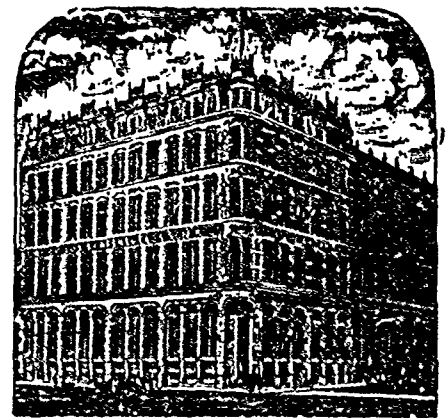
Proprietors, Manufacturers of

Gas Fixtures of Every Description,  
Engineers, Plumbers,

Steam & Gasfitters Brass Goods,

Gas Meters and Automatic Fire Extinguishers.

SAMUEL HOOPER, DEALER IN MONUMENTS, HEAD  
Stones, Mantle Pieces, Grates, &c. Special designs fur-  
nished on application. Cor. Bannatyne and Albert Sts.  
Winnipeg.



**S. GREENSHIELDS,  
SON AND CO.,**

GENERAL

**DRY GOODS,**

17, 19 & 21 Victoria Square and 780,  
782, 784 and 786 Craig Street, MONTREAL

Complete Set of Samples with

McLean Bros.,

Also with Donaldson's Block, WINNIPEG

Wm. Skeene, Innes Block, Vancouver, B.C.

**MACKENZIE & MILLS,**

**WHOLESALE GROCERS**

Special attention given to

Teas, Coffees, Canned Goods,

DRIED FRUITS, Etc.

CORNER KING AND ALEXANDER STREETS,

WINNIPEG, MAN.

**Booth & Langan,**

WHOLESALE MANUFACTURERS OF THE

EAGLE BRAND

**Fine Shoes, Boots, Slippers,**

ETC., ETC.

Every Variety of McKay Sewn, Goodyear  
Welts and Hand Sewn.

36 and 38 St. Peter Street,  
and 54 and 56 Foundling St. MONTREAL

Represented by WM. WILLIAMS,  
496 Main Street, WINNIPEG.

**A. RAMSAY & SON**

37 to 41 Recollet St., Montreal,

Manufacturers of

Paints and Colors, Varnishes, Mixed Paints,  
Silvered Mirrors, Stained and Ornamental  
Glass, and Importers of all  
Painters' Material.

Plate Glass and German Sheet.

R. RAMSAY & SON.

## WINNIPEG MONEY MARKET.

The money market has continued to grow less interesting since the first of the month, and last week the situation in monetary circles was exceedingly uneventful, so far as the banks were concerned. Among wholesalers it is learned that there is no improvement in collections, which are not as good in many lines of trade as dealers could wish for, consequently there is a good deal of grumbling. Payments on account and on paper falling due, are frequently for but a small portion of the full amount. City collections are more backward than from the country. The managers of loan companies report business quiet at present, but they are looking forward to a good business toward spring, as the indications seem favorable to a better movement in real property, for actual settlement, than for some years.

## WINNIPEG WHOLESALE TRADE.

If anything, the situation in wholesale trade seems to grow duller and duller. Dulness was the leading feature in nearly all branches of wholesale trade, and the produce and provision markets were in about the same state. In country produce there was very little movement, but this was traceable to the fact that the most severe and protracted cold snap of the winter prevailed all last week, and country roads in some districts were all but impassable. In wholesale branches, it is early yet to look for much movement of a sorting trade nature, or demand for immediate requirements, especially while indications remain as wintry as they did last week.

## DRUGS.

Business is steady and prices unchanged as follows: Howard's quinine, 75 to 90c; German quinine, 65 to 75c; morphia, \$2.25 to \$2.75; iodide of potassium, \$1.25 to \$1.75; bromide of potassium, 65 to 75c; American camphor, 45 to 50c; English camphor, 55 to 60c; glycerine, 30 to 40c; tartaric acid, 75 to 80c; cream of tartar, 35 to 40c; bleaching powder, per keg, \$8 to \$10; bicarb soda, \$4.50 to \$5; sal soda, \$2.50 to \$3; chlorate of potash, 30 to 35c; alum, \$4 to \$5; copperas, \$3 to \$3.25; sulphur flour, \$4.50 to \$5; sulphur roll, \$4.50 to \$5.25; American blue vitrol, 8 to 10c.

## DRY GOODS.

The Toronto *Empire* says: "In dealing with the dry goods trade this week we wish to draw attention to what is looked upon as a serious and constant grievance by the wholesale trade of Canada, the want of promptitude on the part of customers in meeting their payments when due. Various excuses are made for this negligence. At one time it is the want of snow, at another the superabundance of snow, and again it is the difficulty of getting to market with produce; but amongst all the excuses that which adds insult to injury is for the wholesale merchant to be told that the retailer requires a renewal from the house in Toronto or Montreal so that he may be able to pay duty upon goods purchased in England, or that he may be in a position to buy exchange for cash to pay for such goods. This is an excuse so mean upon the face of it that one would fancy very few would make use of it, but numbers of wholesale merchants, not only in Toronto but in Montreal,

will vouch for the fact that this excuse is being constantly made, and by a class of retailers who should be above such pettiness. This grievance has been made prominent lately, but doubtless the retail trade only require it to be brought to their notice that it is looked upon as such, and also as a mean excuse for not meeting their engagements in Canada. While retailers are perfectly within their province in importing good, from Britain and elsewhere, they should make sure before doing this that they are in a position to make the payments for such importations without asking the wholesale trade of Canada to supply them with funds. The wholesale merchants have no right to be the financiers of such retailers." Western dealers have a similar grievance to that set forth by the *Empire*, and to which the comments of the *Empire* would seem to apply with equal force. The grievance complained of here, however, is, that retailers frequently send their money east to pay cash for goods, or meet paper in full, while allowing their accounts with the local trade to stand. To what extent this is done it is hard to say, but there is a good deal of complaint on this ground, from wholesalers here. The *Empire* adds to its report: "For the past two weeks the wholesale dry goods trade has been brisk. A reason for the spirit manifest throughout the trade is that retailers have commenced to realize that prices are on an upturn, and are, therefore, anxious to buy at once, and so anticipate further advances in values. The firm feeling in regard to prices still prevails, although no immediate advances are to be reported."

## FISH.

The fish market continues well supplied with both salt water and native fresh fish. Prices continue to tend downward, smelts, herrings and haddies being quoted lower. Lake Winnipeg white are in good supply, and irregular in price, being quoted on the market as low as 5c, but in jobbing lots are at 7c. Pickeral are worth about 4 to 5c; pike, 2½ to 3c; Lake Superior trout are quoted at 8c. Fresh salt water fish are offered as follows:—Cod, 8c; haddock, 8c; tommy cods, 5c; smelts, 7½ to 8c, per pound, the latter price for choice fish; herrings, \$2.00 per 100 fish. Cured fish are quoted:—Boneless cod in crates of small boxes, 8½c per pound; in boxes of from 25 to 40 pounds, 7½c per lb; Labrador herrings, No. 1, \$9.50 per barrel; No. 2, \$3.50; No. 1, \$5.25 in half barrels; smoked finnan haddies, 8½ cents per pound; smoked red herrings, 30 cents per box; St. John bladders, \$1.60. Oysters unchanged in price and quoted in bulk at \$1.80 a gallon for Standard and \$2 for Select. Cans are held at 50c to 55c for the same brands.

## FRUITS—DRIED.

No changes to note in the following quotations:—Valencia raisins \$2.25 to \$2.35; Larger Valencias, \$2.75 to \$3.00; London layers \$4.75; Black Basket, ¼ boxes, \$1.75; Black Crown, \$6.25. Now currants 7½c; evaporated apples, 9½c; peaches, 30c; apricots, 22½c; peeled peaches, 22 to 23c; unpeeled peaches, 17 to 19c; prunellas, 19c; dried apples, 6½ to 7c. Elemo figs, in 10 to 20 lb. boxes, 15 to 18c per lb; one pound boxes, \$1.75 per dozen; Fancy Tunis dates on stem, 20c per pound; fancy golden dates in

50lb. boxes, 9c per pound; ordinary dates, 7c per lb; walnuts, 18c per lb; peanuts, raw, 15c; roasted, 17c; almonds, 20c; pecans, 17c; Filberts, 15c; Brazils, 17c per lb; Cocoanuts, \$10 per 100.

## FRUITS—GREEN.

There is nothing new in the market, but all the varieties last quoted are still to be had, at unchanged prices. Stocks of poor apples continue very large. In fact the market is literally flooded with trash, for which there is little sale. Choice fruit is usually wanted, and brings good prices, as stocks of really good are not large. Fancy apples bring \$3.50 per barrel, with ordinary held at about \$3 per barrel. British Columbia winter pears are offered in large boxes at \$4 to \$4.25 per box. Messina lemons are quoted at \$3.00 per box. Florida fancy blood oranges, \$7 per box. Messina oranges, \$5 to \$5.50 per box. California Riverside oranges, \$8.00 per box. California Washington Naval oranges, \$7.00 per box. Bananas, \$3.50 to \$4.00 per bunch. Malaga grapes in 50 to 65 pound kegs are quoted at \$9 to \$11 as to size of keg; Cranberries are quoted: bell and cherry, \$9 to 9.50; bell and bugle, \$9.50 to \$10. Southern onions, \$2.50 per 100 pounds; Spanish onions, \$1.75 per crate of about 50 pounds; cider, rectified, in barrels, 35c per gallon.

## FURS—RAW.

Quotations are unchanged and continue about as follows: Black bear, \$14 to \$22; black bear cubs and yearlings, \$3 to \$12; brown bear, \$8.00 to \$14.00; brown bear cubs and yearlings, \$2.00 to \$7.00; fisher, per skin, \$4.00 to \$6.00; otter, per skin, \$2.00 to \$10.00; beaver, clean and dry, per lb., \$2.50 to \$3.50; silver fox, as to size and beauty, \$20. to \$75; cross fox per skin, \$3.50 to \$8.00; red fox per skin, \$1.00 to \$1.55; timber wolf, \$1.00 to \$3.50; prairie wolf, 50c to \$1.25; wolverine, \$2.00 to \$5.00; Lynx, \$2.00 to \$4.50; wild cat, 25c to 75c; marten, dark, 50c to \$2.70; marten, brown and pale, 25c to \$1.75; skunk, as to stripe, 15c to 95c; raccoon, 50c to 95c mink, as to color, 50c to 95c; badger, 20c to 80c; muskrat, fall, 3c to 12½c.

## GROCERIES.

Teas are reported very strong in outside markets, especially the great tea centres of London and New York. Medium qualities of Japans and Young Hysons are said to be in brisk demand, at higher prices. Sugars were lower in eastern markets, granulated being ½c lower on Monday. Prices here are:—Sugars—yellows 6½ to 7½c; granulated 8½c; lumps 9½ to 9½c. Coffees—Rios, from 21 to 24c; Java, 25 to 30c; Old Government 33 to 34c; Mochas, 32 to 35c. Teas, Japan 23 to 46c; Congous, 22 to 60c; Indian teas, 35 to 60c; young hyson, 26 to 50c. T. and B. tobacco, 50c per pound; P. of W., butts 46½c; P. of W. caddies, 47c; Honeyuckle, 7s, 55c; Brier, 7s, 53c; Laurel Bright Navy, 3s, 56c; Index d. thick Solace, 6s, 48c; Brunotte Solace, 12s, 48c. Special brands of cigars are quoted: Reliance, \$50; Gen. Arthur, \$30; Mikado, \$40; Terrier, \$30 per 1000.

## HIDES AND TALLOW.

Very few hides are coming in. Prices continue very low. From 2 to 2½c is now offered here for frozen hides. By grade, prices

are nominal as follows: Winnipeg inspected, No. 1, 3½c; No. 2, 2½c; No. 3, 2c. Calfskins are quoted at 4 to 5c, but few are offering, and most are classed at kip, which are worth 2c. Sheepskins 25 to 50c as to quality. Tallow, at 2½c for rough, and 5c for rendered.

**GRAIN AND PROVISION MARKETS.**

**WINNIPEG.**

**WHEAT.**

Wheat deliveries by farmers at country points in Manitoba were reduced to a minimum so far for the season last week. The week set in with the coldest and roughest weather yet experienced this winter. Country roads were badly drifted with snow, and with the thermometer running very low all the week, farmers would not start out with loads when they were very likely to get stuck on the way, or be greatly delayed in reaching the markets. Very little wheat was therefore marketed. Prices were very firm, and were higher in a number of country markets, prices to farmers having reached and passed the \$1 mark at several points, for best samples. The firmness is due to light deliveries and to the belief that there is very little wheat left to be marketed. A good many of the mills at provincial points are not very well supplied with wheat, and are buying actively. The large Keewatin mill company was an active buyer, putting up prices considerably in some markets. With the short supply, the local situation is therefore very strong. Duluth wheat is the only competition which Manitoba wheat can have, and the lowest cash prices at Duluth last week were still considerably higher proportionately than average prices here. At the mills in the city, \$1 per bushel was the usual price for best samples on a basis of No. 1 hard, and at country points prices to farmers ranged from 87c to \$1.05 for No. 1 hard, according to the market, and to the competition existing at the different points.

**FLOUR.**

The local flour market holds firm, and with a higher tendency, owing to the continued advance in wheat. Millers claim that flour is 10 to 20c too low now in proportion to prices being paid for wheat here. Further advances are therefore expected. Foreign markets are more active and the demand for Manitoba flour is improving. Quotations to the local trade are not changed from last week for high grades, but the range of prices on low grades has narrowed down. Prices to the local trade here are quoted:—Patents, \$3.00; strong bakers, \$2.80; XXXX, \$2.20; superfine \$1.65; Graham flour, \$2.80; middlings, \$3.00.

**MILLSTUFFS**

Prices are stronger for both bran and shorts, the latter being quoted \$1 per ton higher. Bran, \$10 to \$11 per ton; shorts, \$12 to \$13.

**BARLEY.**

This cereal is still very depressed. "It is the sickest thing on the list," said one dealer on Saturday. It is really impossible to give any satisfactory quotations for the grain at present, as there are no fixed range of prices, and quotations are merely a matter of opinion. However, it would require to be a choice sample indeed which would bring 35c on track. One dealer remarked that he would not give over 30c for the best barley in Manitoba. From 22 to 25c per bushel is being paid farmers in outside country markets for ordinary samples.

**OATS.**

Very few oats were brought into the city last week, owing to cold, stormy weather. Prices on the market were strong, and good samples would bring 30c per bushel. From 22 to 25c is being paid in country markets, and at some points a cent or two higher is paid.

**OAT AND CORNMEAL, ETC.**

Prices are steady, and quoted as follows: \$2.50 for standard oatmeal and \$2.65 for granulated per hundred. Rolled oats, 80 pound sacks, \$3. Cornmeal was held at \$2 per hundred. Pot barley is held at \$2.75, and pearl barley at \$3.25 per sack.

**CHEESE.**

Unchanged 10½ to 11c.

**BUTTER.**

The butter market is very dull. Stocks of good butter do not seem to be large, but the demand is very quiet. It is not likely that the quantity of old butter which will be left over in the spring will be as large as last year, but there is a good deal of poor to medium stock on hand. Quite a little fresh fodder butter is coming in, and should mild weather set in, there would soon be enough of this to almost supply the city trade. It was reported that a car of butter was on the way here from Ontario last week, of a good dairy quality, and that it would be sold at prices several cents under quotations now ruling here. However, definite information regarding the report could not be learned. If the rumor turns out true, it would have a depressing influence on prices. About 22c is still quoted here as the top price for small lots of choice dairy, and the range for from fair to choice may be given at from 18 to 22c.

**EGGS.**

Notwithstanding the cold wave, the price of eggs continued to decline steadily last week, and on Friday sales were made at 20c per dozen, in case lots, for fresh. Receipts are coming in freely from the States, where prices appear to be very weak. Native country eggs were not moving last week, owing to cold weather.

**LARD.**

Home rendered is usually held at \$2.40 in 20 lb. pails, and Chicago, at \$2.35, though these prices are being shaded to some extent.

**CURED MEATS.**

No further changes to note. Prices are quoted as follows: Mess pork, \$20 per barrel; dry salt bacon, 10c lb., smoked breakfast bacon, 14c; rolls, 12c; hams, 14½c; pork sausage, 9c lb.

**DRESSED MEATS.**

Very few hogs were received last week, and prices were merely nominal at 7c per lb. No large lots were received at all, only an odd hog or so from farmers wagons coming in. The stormy weather is supposed to be the cause of the light movement. Dressed farmers' beef was also offered less freely. Beef sides quoted at 4 to 5c as to quality; mutton, 9 to 10c; veal, 8 to 10c.

**POULTRY.**

Turkeys are quoted at about 11c; geese at about 10c; chickens are scarce and firm at 10c.

**VEGETABLES.**

Prices are as follows:—Potatoes usually bring about 30c per bushel in quantities; onions, \$1.50 carrots, 60c; turnip, 25c; parsnips, \$1, beets, 50c. all per bushel. Celery scarce. 40 to 75c per dozen bunches, as to quality. Cabbage average 75c to \$1 per dozen for good.

A. CALKINAR, western representative of Robinson, Little & Co., London, Ont., returned to the city from his long western trip, last week.

R. T. RILEY, manager for W. E. Sanford & Co., Winnipeg, has been on a trip to the Pacific coast. He went by the N. P. R., and returned by the C. P. R.

**Montreal Markets.**

Manitoba No. 1 hard wheat closed at \$1.30 to \$1.31 on Friday, but the market was not active.

**Wheat Statistics.**

**THE VISIBLE SUPPLY.**

The following shows the stocks in bushels, of wheat at the principal points in the United States and Canada, east of the Rocky Mountains; also, in transit by lake and rail, on the dates named, according to the Chicago statement:—

	1889	1888.	1887.
February 16.....	33,435,081	39,565,037	59,880,370
Decrease for the week ended Feb. 16,	765,047 bushels.		

**WHEAT AT PRIMARY MARKETS.**

The following table shows the receipts of spring wheat at the markets mentioned from June 30, 1888, to Feb. 16, 1889, compared with two previous years:—

POINTS.	1888-89	1887-88	1886-87
Chicago.....	10,693,000	10,393,000	15,067,000
Minneapolis.....	4,600,000	6,450,000	6,340,000
Duluth.....	23,870,000	32,720,000	20,090,000
Total.....	49,223,000	59,563,000	41,507,000

The total receipts of winter wheat at the markets mentioned from July 30, 1888, to Feb. 16, 1889, compared with two previous years, were as follows:—

POINTS.	1888-89	1887-88	1886-87
St. Louis.....	10,851,000	11,060,000	10,560,000
Toledo.....	6,970,300	8,184,000	11,545,000
Detroit.....	6,274,000	5,622,000	8,225,000
Kansas City.....	1,666,000	1,290,000	2,707,000
Cincinnati.....	1,476,000	1,224,000	2,423,000
Total.....	27,246,000	27,330,000	35,462,000

**BREADSTUFFS ON PASSAGE.**

The following shows the quantity of wheat and flour, equivalent to wheat, expressed in quarters, (8 bushels to the quarter) on passage to Great Britain and Europe, on the dates named:—

	Feb. 16, 1889.	Feb. 9, 1889.	Feb. 18, 1888.
To Great Britain.....	2,221,000	2,307,000	1,450,000
To Europe.....	401,000	429,000	130,000

**WHEAT IN STORE.**

The following shows the wheat in store, in bushels, at the points mentioned, on the dates named:—

Chicago, Feb. 16.....	4,445,117
Minneapolis, Feb. 18.....	6,79,488
Duluth, Feb. 18.....	1,486,000
Montreal, Feb. 16.....	485,291
Toronto, Feb. 16.....	126,000

**EXPORTS FROM THE UNITED STATES.**

The exports of wheat and flour (expressed in bushels) for the first seven months of the fiscal year ending January 31, last, were as follows:—

	1888-89	1887-88
Atlantic ports, bu.....	32,272,956	64,367,365
Pacific ports.....	24,891,178	15,257,162
Total.....	57,164,134	79,624,527

The exports for the month of January were:—

	1889.	1888.
Atlantic ports, bu.....	2,655,913	5,358,717
Pacific ports, bu.....	3,061,231	2,162,143

Total..... 6,257,144 7,520,860  
Exports from Atlantic ports for the week ending Feb. 16, and the corresponding week last year, were:—

	1889.	1888.
Flour, bris.....	80,400	234,400
Wheat, bu.....	69,650	501,100

A CORRESPONDENT at Elkhorn, Man., writes THE COMMERCIAL as follows: Elkhorn wants a grist mill, a baker, a tinsmith, a druggist, a watchmaker, a lawyer, a dressmaker, and a commissioner for taking affidavits. The Government should appoint one or two of the latter. There is a good opening for all the others.

News of the dissolution of the wholesale boot and shoe firm of C. S. Hyman & Co., London, Ontario, was received here last week. C. S. Hyman continues the tannery business, and J. H. Glass has taken over the boot and shoe department. Mr. Glass has formed a partnership with Stevens, Clark & Stevens, boot and shoe manufacturers, and the two establishments will be amalgamated, making one of the largest manufacturing establishments of the kind on the continent. Mr. Glass is well known in Western Canada, having represented the firm of C. S. Hyman & Co. here for years. This firm has done a large trade between Port Arthur and Victoria, B. C., and as the business of the house in the West was worked up by Mr. Glass, it is certain that there will be no loss of patronage for the firm of Stevens, Glass & Clark in this direction. The old firm of Stevens, Clark & Stevens were noted for the manufacture of very fine goods. They made a specialty of this class of work, and did a large trade in Eastern Canada. This feature will be continued by the new firm, together with the manufacture of the more staple class of goods formerly turned out by C. S. Hyman & Co. Western orders previously taken by C. S. Hyman & Co. will be filed by Stevens, Glass & Clark. The personal of the firm is J. H. Glass, W. Stevens, John Clark and C. S. Stevens.

An Ottawa telegram says:—The Government intend amending the customs act in the following particulars:—In the bringing in of goods by land in conveyance other than railway cars during the night or statutory holidays, excepting

under proper supervision, the board of customs and Dominion appraisers shall have power to revise the valuations of port appraisers. In every case value for duty shall include charges for transportation and shipment, and shall include any royalty, rent or charge in respect of exclusive right or territorial limits. That moneys deposited in lieu of articles smuggled and subject to seizure shall be treated in like manner as if such article had been seized.

The Winnipeg Sun claims to have inside knowledge that the Manitoba Government will wipe out the act guaranteeing interest on \$4,500,000 to the Hudson's Bay railway. The Sun says it has been agreed in caucus of Government supporters, to give the road a cash bonus of \$2,000 per mile, for the portion of the road which would be within the province of Manitoba. The mileage in the province is estimated at about 297 miles, or say \$600,000. This bonus would of course be subject to certain guarantees from the railway company, as to the completion of the road, etc.

At a meeting of the Port Arthur board of trade last Wednesday, the Winnipeg board was asked to urge the Dominion Government to complete the enlargement of the St. Lawrence canal, and a committee of this board was also formed to memorialize the Dominion Government on the same subject. The secretary of the board was instructed to communicate with the Crofters secretary of Scotland to endeavor to get some of the Crofters here.

An Ottawa telegram of Saturday says: The Northern Pacific & Manitoba railway are after all applying to Parliament for a charter for

their system of railways. They ask a charter for their line from West Lynne to Winnipeg, Winnipeg to Portage la Prairie, Morris to Brandon, and also for the extension of the Morris branch into Assiniboia at or near 104 longitude.

The Winnipeg Free Press says:—F. A. Fairchild & Co., wholesale implement and carriage dealers, have just issued a very handsome catalogue for the coming season. The work was done in this city and is equal to any of the American or eastern work. The book was printed in THE COMMERCIAL job department.

The bankrupt stock of Hamilton & Co., Morris, Man., will be offered for sale by auction, at Winnipeg, on March 11. The stock is valued at \$6,792, including fixtures of about \$175. Book debts, taken separately, amount to \$869.

Jas Pye, the well known flour-mill builder and consulting engineer, of Minneapolis, Minnesota, was registered at the Leland House, Winnipeg, for a few days last week.

The Brandon Mail, which was burned out lately, appeared last week as usual. It will be printed at the office of the Brandon Sun, until a new plant can be obtained.

Cousins & Scatcherd, general merchants, Medicine Hat, Assa., have dissolved partnership. Wm. Cousins winds up the business of the late firm.

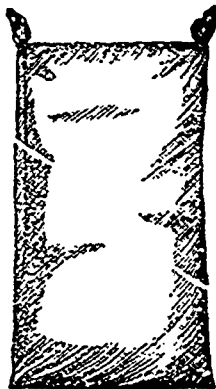
W. R. Ross, merchant, of Holland, Man., called at THE COMMERCIAL office last week. He was in the city on municipal business.

The Deloraine Times appears this week in enlarged form.

# A. W. MORRIS & BRO.

PROPRIETORS OF

ESTABLISHED 1825.



## The J. A. Converse Manufacturing Co

MONTREAL, Q., and PORT HOPE, Ont.

MANUFACTURE THE FAMOUS

### Red Cap Brand of Binder Twine.

THE MOST SATISFACTORY IN THE MARKET.

— ALSO —

CORDAGE, Jute and Cotton **BAGS** CALCINED and LAND PLASTER

Head Office: = MONTREAL.

Manitoba and Northwest Agents:

## MERRICK, ANDERSON & Co. Winnipeg.

**Chicago Board of Trade Prices.**

May wheat opened on Monday, Feb. 18, about 4c lower than the previous Saturday's close, at \$1.10 3/4. The range during the day was from \$1.09 1/4 to \$1.10 7/8, the opening being the top price. July wheat ranged from 94 3/4c to 95 3/4c, closing at 94 1/4c. Closing prices were:

	Feb.	Mar.	May.	June.
Wheat	1.06 1/2	1.07 1/2	1.09 1/2	1.04 1/2
Corn	34 1/2	34 3/4	35 1/2	35 1/2
Oats	25 1/2	26	27 1/2	26 1/2
Pork	11.00	11.00	11.17 1/2	11.27 1/2
Lard	6.62 1/2	6.55	6.05	6.70
Short Ribs	5.77 1/2	5.77 1/2	5.92 1/2	6.00

May wheat opened 1/4c higher on Tuesday, and ranged from \$1.08 1/2 to \$1.12 1/2 during the day. July ranged from 93 1/4c to 94 3/4c, closing at 94 1/4c. The market was very excited, and uncertain. The big advance was caused by a sale of 600,000 bushels of cash wheat in elevators here, for a Buffalo milling firm, at a price said to be from 5 to 7c over market values. Closing prices were:

	Feb.	Mar.	May.	June.
Wheat	1.08 1/2	1.09 1/2	1.11 1/2	1.05
Corn	34 1/2	34 1/2	35 1/2	35 1/2
Oats	25 1/2	25 1/2	27 1/2	26 1/2
Pork	11.05	11.05	11.25	11.35
Lard	6.55	6.57 1/2	6.67 1/2	6.72 1/2
Short Ribs	5.80	5.80	5.97 1/2	6.05

May wheat opened at \$1.11 on Wednesday, and ranged from \$1.09 1/2 to \$1.11 1/2. July wheat ranged from 94c to 96 1/4c, closing at 95 3/4c. The big cash deal of yesterday was the main subject of interest. The deal is said to have been on a basis of 5c premium over May. Closing prices were:

	Feb.	Mar.	May.	June.
Wheat	1.06 1/2	1.07 1/2	1.09 1/2	1.05
Corn	34	34 1/2	35 1/2	35 1/2
Oats	25 1/2	26	27 1/2	27
Pork	10.95	10.95	11.00	11.20
Lard	6.55	6.57 1/2	6.70	6.72 1/2
Short Ribs	5.72 1/2	5.72 1/2	5.90	5.97 1/2

On Thursday wheat opened lower. Trading was quiet and prices easier, closing as follows:

	Feb.	Mar.	May.	June.
Wheat	1.06 1/2	1.07 1/2	1.09 1/2	1.04 1/2
Corn	34 1/2	34 1/2	35 1/2	—
Oats	25 1/2	25 1/2	27	26
Pork	11.05	11.05	11.20	11.30
Lard	6.70	6.72 1/2	6.82 1/2	—
Short Ribs	—	—	—	—

No market on Friday, being holiday for Washington's birthday.

Closing prices Saturday for wheat were: Feb. \$1.06 1/2; Mar. \$1.06 3/4; May \$1.09 1/2. June \$1.04 1/2; July 95 3/4c.

**Minneapolis Markets.**

Closing quotations on Change on Thursday for wheat were fractionally lower than a week ago, for hard grades for May, but No. 2 northern and cars on track were 1 to 2c higher as follows:

	Feb.	May.	On track.
No. 1 hard	1.19	1.23	1.19.20
No. 1 northern	1.00	1.11 1/2	1.10.12
No. 2	1.00	1.03	1.00.05

Quotations for flour, were 10c higher for patents, and strong bakers' Patents, sacks to local dealers, \$6.30 to \$6.40; patents to ship, sacks car lots, \$6.00 to \$6.20; in barrels, \$6.25 to \$6.35. Delivered at New England points, \$6.90 to \$7.05; bakers, here, \$4.20 to \$5.20; superfine, \$2.50 to \$4.10; red dog, sacks, \$1.45 to \$1.60; red dog, barrels, \$1.70 to \$1.85.

Barley.—The trade was slow and poor cars nominal with good selling at 40 to 50c.

The Northwest Miller, of Friday last says: —Millers pretty generally report the flour market inactive, with buyers not very much disposed to purchase at the recent advance in prices, notwithstanding that the appreciation in wheat is even greater. Local manufacturers are feeling the competition of not only winter wheat mills, but that of country mills as well, the latter making prices that are hard for Minneapolis to understand. C. A. Pillsbury, who is just back from the east, says that flour receivers at the principal centres are very short of sound flour of any kind. Where there is any considerable stock he says it is of low grade or made from frost bitten wheat. There is no improvement as to export trade, foreigners rather bidding less than before, if anything. The direct exports of flour for the week were 9,100 bbls., against 17,800 bbls. for the preceding week. Quotations, London, c. i. f. 280 lbs. arc. Patents, 38s to 39s 6d; bakers', 27s to 28s; low grades, 14s to 17s 6d.

**Duluth Wheat Market.**

The market was broken by Washington's Birthday holiday on Friday. Prices closed on Monday about 1c lower than closing prices on the previous Saturday, and tended downward during the week. Closing prices for No. 1 hard on Change on each day of the week were:

	Cash.	Feb.	May	June.
Monday	1.22	1.22	1.23 1/2	1.28 1/2
Tuesday	1.22	1.22	1.29	1.29
Wednesday	1.20	1.20 1/2	1.27 1/2	1.27
Thursday	1.20	1.20	1.26	1.25 1/2
Friday	Holiday.	—	—	—

Closing prices on Saturday were; Cash, \$1.19; Feb. \$1.19; May, \$1.24 1/2; June, \$1.24; July, \$1.23.

**Chicago Provision Prices.**

Prices show further declines in provisions. Following are the cash quotations at Chicago on Thursday last: Green meats—shoulders, per pound, 4 1/2 to 4 3/4c; hams, per 100 pounds, \$8.15. Loose dry salted shoulders, per 100 pounds, \$5.25 to \$5.50; short ribs, per 100 pounds, \$5.75 to \$5.85; long clear, per 100 pounds, \$5.85 to \$5.95; short clear, per 100 pounds, \$5.95 to \$6.05. Boxed meats—Long and short clear, per 100 pounds, \$6.10 to \$6.20; Cumberland, per pound, 7 1/2 to 7 3/4c; Staffordshire sides, per pound, 7 1/2 to 8c; smoked hams, per pound, 9 to 9 1/4c.

**Chicago Barley Market.**

Fresh receipts of barley were not large, yet these proved excessive, as the bulk consisted of medium to poor grades, while the few buyers present wanted only limited quantities of really choice grades. Some consignments had been carried over since the opening of the week, so meager was the demand, and for the poorest lots it was next to impossible to secure a bid. The feeling was, as usual, very weak and depressed, with sales slow on the basis of 35 to 65c for No. 3, according to condition, and 32 to 60 for No. 4. Sales were: New No. 5, 1 car at 25c; new No. 4, 3 cars at 30 cents, 1 at 30 1/2c, 1 at 35c, 6 at 38c, 1 at 40c, 1 at 45; new No. 3, 1 car at 30 1/2c, 1 at

45c, 1 at 50c, 1 at 52c, 2 at 53c, 3 at 55c, 1 at 56, 2 at 57c, 1 at 55c, 1 at 60, 2 at 62.

**Canadian Securities in England.**

The Canadian Gazette of Feb. 1, gives the following quotations of leading Canadian securities in the London market:

	Price.	Rise.	Fall
Canada 3 1/2 per cents	105	—	1
Ditto 4 per cents, 1885	110	—	—
Ditto 3 per cents	94 1/2	—	—
British Columbia 4 1/2 per cents	112	—	—
Manitoba 5 per cents	114	1	—
Quebec 5 per cents, 1874 and 1876	111	—	—
Ditto 4 1/2 per cents	108	—	—
Ditto 5 per cents, 1883	113	—	—
Ditto 4 per cents	104	—	—
Montreal 5 per cents, 1873	107	—	—
Toronto 4 per cents	101	—	—
Winnipeg 5 per cents	111	—	—
Canadian Pac. 5c shares (N. Y. register)	54 1/2	3	—
Ditto shares (London register)	53 1/2	3	—
Ditto first mortgage bonds	104 1/2	—	—
Ditto 3 1/2 per cent. land grant bonds	97 1/2	—	—
Grand Trunk ordinary stock	11 1/2	1	—
Ditto first preference	7 1/2	5	—
Manitoba and Northwestern bonds	110	1	—
Manitoba Southwestern bonds	—	—	—
Bank of British Columbia	35 1/2	—	—
Bank of B. N. A.	75	—	—
Trust and Loan of Canada, £5 paid	5	—	—
Ditto £3 paid	2 1/2	—	—
Manitoba Mortgage	—	—	—
British American Land	29	—	—
Canada North-West Land	3 1/2	—	1
Hudson's Bay	10 1/2	—	1
Land Corporation of Canada	7	—	—
Vancouver Coal	—	—	—

**Montreal Stock Market.**

The following quotations on Feb. 22 as compared with prices on Feb. 7, will indicate the course of the stock market:

	Feb. 7.		Feb. 22.	
	Offered.	Bid.	Offered.	Bid.
Montreal	231	230 1/2	233 1/2	232 1/2
Ontario	132	129	136 1/2	135
Toronto	—	213	—	215
Merchants	140	137 1/2	139 1/2	139
Commerce	119 1/2	119 1/2	121	120 1/2
Molson's	165	163 1/2	175	160
Union	—	93	—	95
N. W. Land Co.	65 1/2	65 1/2	75	73
C. P. R.	52 1/2	52 1/2	52 1/2	52 1/2

An Ottawa telegram on Friday says Lloyd and Drummond have arranged to build 120 miles of the Red Deer Valley road north of Calgary this summer. It is likely more will be built, but the English capitalists, on the strength of representations already made, have decided to go that far. There is little doubt the government will give the land subsidy asked by the company.

W. STEVENS.

J. H. GLASS.

**Stevens, Glass & Clark,**

(Successors to C. S. Hyman & Co.)

MANUFACTURERS AND WHOLESALE DEALERS IN

**EXTRA FINE,**

FINE AND MEDIUM GRADES

—OF—

**BOOTS & SHOES**

LONDON, Ont.

Mr. Glass will as usual call upon the trade in Manitoba, Northwest Territories and British Columbia. Orders by letter solicited. Send for sample dozen.

JOHN CLARK.

C. STEVENS.

J. S. NORRIS. JAS. CARRUTHERS.

**Norris & Carruthers,**  
**FLOUR AND GRAIN**  
**COMMISSION MERCHANTS.**

Produce Exchange Buildings,  
 COR. SCOTT & COLBORNE STS., TORONTO.  
 CORN EXCHANGE, MONTREAL.

Liberal advances made on consignments of  
 Flour, Wheat, Barley and Oats.  
 CORRESPONDENCE SOLICITED.

**PROVISIONS!**

ASK YOUR GROCER FOR GRIFFIN'S  
 Sugar Cured Hams, Breakfast Bacon,  
 Pure Pork Sausage, Spiced Rolls,  
 Prime Kettle Rendered Lard,

—ALSO—  
 LONG CLEAR BACON, BARREL PORK,  
 BUTTER, EGGS AND CHEESE,  
 AT CLOSE PRICES TO THE TRADE

**J. Y. Griffin & Co.**  
 Packers and Provision Merchants,  
 WINNIPEG.

**A. H. PLEWES,**  
 Grain and Flour Exporter,  
 OFFICE: CLEMENTS' BLOCK, 496 MAIN ST.  
 Winnipeg, Manitoba.

**Allen & Brown,**  
 (LATE OF GRIFFIN & ALLEN)  
**Pork Packers,**  
 Hams, Bacon, Sausage, Bologna.  
 Lowest Quotations to the Trade.  
**WILL PAY THE HIGHEST CASH PRICE**  
**FOR DRESSED HOGS.**  
 CORRESPONDENCE SOLICITED.  
 70 McDERMOT STREET, - WINNIPEG.

**J. S. CARVETH & CO.,**  
**PORK PACKERS**  
 COMMISSION MERCHANTS,  
 General Produce Dealers. Correspondence  
 solicited.  
 23 Jeremia Street, WINNIPEG

HIGHEST CASH PRICE PAID FOR  
**DRESSED HOGS.**  
 Quotations furnished upon application,  
**A. MACDONALD & CO.,**  
 Packers and Commission Merchants,  
 228 MAIN STREET, - WINNIPEG.

LIVE OR DRESSED  
**HOGS**  
 WANTED  
 For which the highest price will be paid.  
 Correspondence Invited.  
**Manitoba Packing & Provision Co. (Ld.)**  
 WINNIPEG.

**BROMLEY & CO.**

—MANUFACTURERS OF—



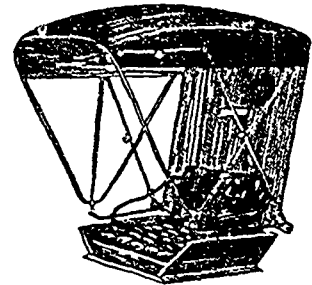
**Awnings, Mattresses, Etc.**

17 McWILLIAM STREET WEST,  
**WINNIPEG.**

**A. C. McRAE,**

—MANUFACTURER OF—

Carriage Tops,

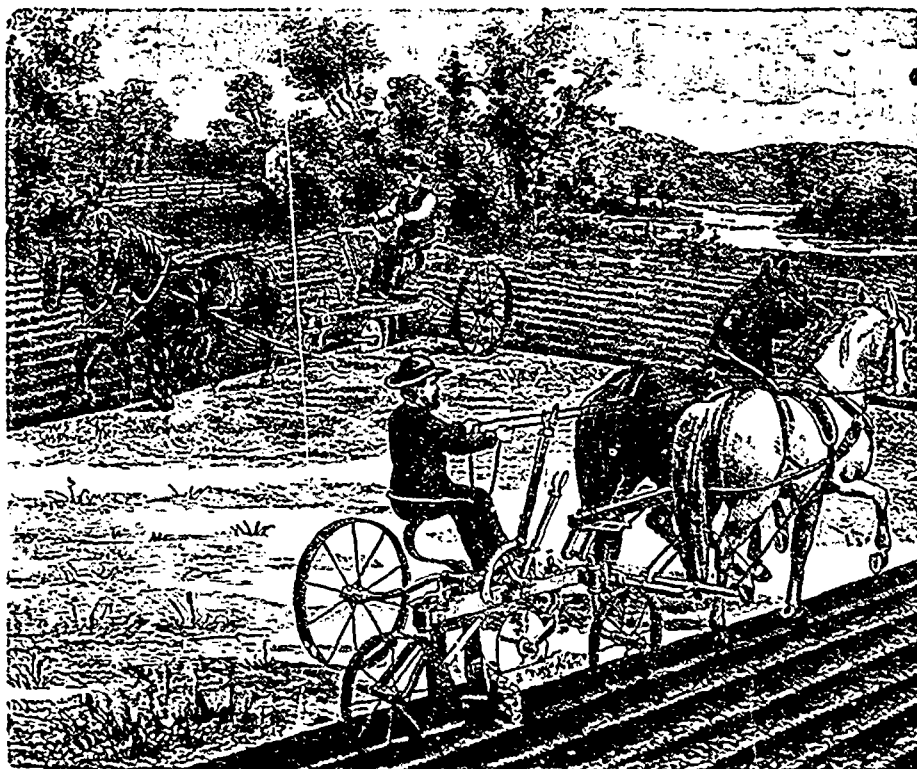


Seat Trimmings,

AND WHOLESALE DEALER IN  
**TRIMMING GOODS.**  
 Corner King and James Streets,  
**WINNIPEG.**

**THE PATTERSON & BRO. CO., LIMITED.**

Manufacturers of and Dealers in



**Steel Binders,**

Mowers, Rakes, Grain Seeders,  
 Grain Crushers, Straw Cutters, Plows,  
 Harrows, Wagons, etc.

Sole Agent for the Old Reliable

**SNOWBALL WAGON,**  
**CELEBRATED MOLINE PLOWS,**

Breaking Plows, Cross Plows, Flying Dutch-  
 man Junior, Flying Dutchman Senior  
 Riding and Walking Wheel Plows  
 and the genuine

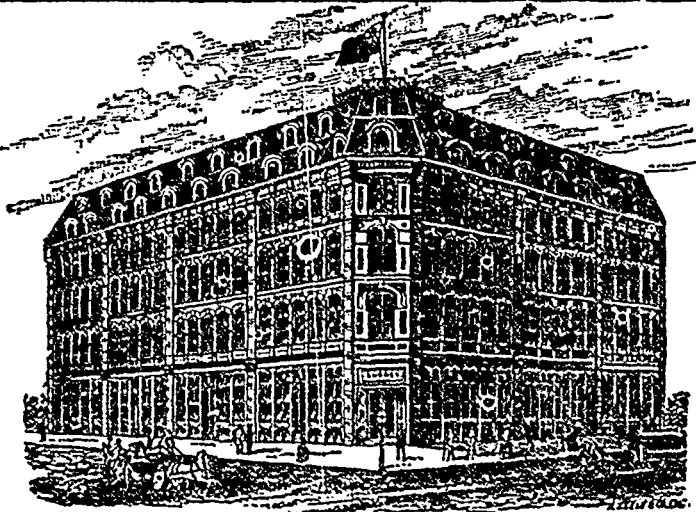
**J. I. CASE Threshers and Engines**  
 Settlers Complete Outfits a Specialty.

Price Lists and printed matter sent free on ap-  
 plication. Agencies at all principal points.

ADDRESS,

**H. S. WESBROOK, Manager**  
**WINNIPEG, MANITOBA.**

MEN'S, BOY'S and YOUTH'S CLOTHING  
CHILDREN'S CLOTHING a speciality.



Our Samples for the Spring Season 1889,  
are now on view at 35 Lombard St., Winnipeg

## H. SHOREY and CO., WHOLESALE CLOTHIERS,

1866, 1868 and 1870 Notre Dame and 38, 40 and 42 St. Henry St., MONTREAL.

### J. & A. Clearihue,

COMMISSION MERCHANTS  
AND MANUFACTURERS AGENTS,  
Dealers in—

## Fruits and Produce

YATES ST., VICTORIA, B.C.

Representing D. Richards, Manufacturer of Laundry and Toilet Soaps, Woodstock, Ontario; Jas. Hall & Co. manufacturers and dealers in Gloves, Mitts and Moccasins Brockville.

Consignments Received in all Lines. Correspondence Solicited.

### Schmidt & Buss,

—WHOLESALE DEALERS IN—

BULK AND CAN

## OYSTERS

FRESH AND SALT FISH, POULTRY, &c.

Cor. Main and Logan Streets,

HIGGINS' BLOCK, WINNIPEG

Send for Price List

### Williamson, White & Co.,

28 WELLINGTON STREET WEST,  
TORONTO.

## IMPORTERS OF FINE WOOLLENS

AND TAILORS' TRIMMINGS.

Samples on application.

### ECOGENE. WATER WHITE. SUNLIGHT STANDARD OIL COMPANY,

(CLEVELAND, OHIO)

Manitoba & Northwest Department, Winnipeg.

## ILLUMINATING OILS LUBRICATING

GASOLINE, AXLE GREASE, CANDLES and all  
PRODUCTS OF AMERICAN PETROLEUM.

Our stock here embraces all the Manufactures of the  
Standard Oil Company. Correspondence solicited.

W. P. JOHNSON Mgr., Office 848 Main St

CAPITOL CY LINDER ELDERADO ENGINE. CHALLENGE MACHINERY

## THE DRIARD,

VICTORIA, B.C.

The only strictly first-class hotel  
in the province.

## LELAND HOUSE, VANCOUVER,

British Columbia.

The leading commercial hotel of the city.  
Directly above the C.P.R. Station and Steam-  
boat wharf. All modern improvements. Sample  
rooms for travellers.

J. E. INSLEY, Mgr. WM. PROUT, Prop

## Fish! Fish! Fish!

HEADQUARTERS FOR FISH—IN STOCK AND TO ARRIVE.

Boneless Cod in 5, 25 and 40 lb. boxes.  
Boneless Fish in 5, 25 and 40 lb. boxes.  
Finnan Haddies in 30 and 50 lb. boxes.  
Labrador Herring in bbls. and half bbls.  
Bloaters, Smoked Herring, Fresh Codfish,  
Haddock, Smelts, Tommy Cods, &c.

EGGS, BUTTER, CHEESE, FRUIT, ETC.

Orders, Consignments and Correspondence  
Solicited.

## JOSEPH CARMAN, WINNIPEG.

## H. S. Howland, Sons & Co.

## WHOLESALE HARDWARE.

Full lines of Rodgers', Butlers', Wostenholm's, Ask-  
ham's, Fenton's, Cook's and other makers TABLE AND  
POCKET CUTLERY.

Warnock's and Rixford's AXES. Disston's and Shurley  
& Deitrich's SAWS. Yale and Peterboro LOCKS.  
Black Diamond FILES. Heller Bros.' HORSE RASPS  
and BLACK-SMITH'S TOOLS, etc., etc.

Orders by mail and telegraph promptly filled at lowest  
current prices.

WAREHOUSES:

37 Front Street West, TORONTO.

REPRESENTED BY

T. G. DEXTER, P.O. Box 1272, WINNIPEG

J. WILLIAMSON & SONS will start a brickyard  
at Regina, Assa.

J. A. WHITMORE has disposed of his livery  
business at Moose Jaw, Assa.

NESBITT, DICKSON & Co., biscuit manufac-  
turers, Victoria, B.C., have assigned.

J. McDONALD's carpenter shop, Winnipeg,  
was damaged considerably by fire last week.

The annual meeting of the Royal Soap  
Manufacturing Co., Winnipeg, will be held on  
March 25.

It is rumored that the C. P. R. will extend  
the Southwestern branch, via Carman to Mani-  
touw, on the Pembina branch.

THE B.C. Legislature has passed a resolution  
urging the Dominion and Imperial Governments  
to have the China steamers call at Victoria.

It is said an announcement regarding the  
policy of the Manitoba Government toward the  
Hudson's Bay railway, may be expected soon.

A DEPUTATION from the Ontario Millers' As-  
sociation will ask the Dominion Government to  
increase the duty on flour from 50 cents to \$1  
per barrel.

JOHNSTON & CHATWIN, livery, Neepawa,  
Man., have dissolved partnership. S. Chatwin  
will continue the business. S. Johnston will  
open a butcher shop at Neepawa.

JAS. RUSSELL & Co., coffee and spice mills,  
Winnipeg, have dissolved partnership. This  
business was carried on by Jas. Russell and G.  
A. Clarke, M.D. Russell retires.

BROWN & McCALLUM, of the Morden House  
hotel, Morden, Man., have dissolved partner-  
ship. McCallum will continue the business.  
Brown has bought out Kilgour's livery business  
at Morden, Kilgour having opened an hotel at  
Thornhill, as previously noted.

An Ottawa telegram on Friday says: The  
hitch regarding the taking over of the Regina  
& Long Lake railway by the C.P.R. has been  
overcome. The road will be extended early  
in the spring to Saskatoon on the South Sas-  
katchewan and thence to Edmonton. A spur  
line will be built from the Saskatoon to Prince  
Albert.

A MEETING of the council of the Winnipeg  
board of trade was held on Monday last. In  
view of the resignation of Capt. Clark from the  
grain inspectorship at this point, the council  
passed a resolution recommending to the De-  
partment of Inland Revenue that David Horn  
should be appointed as inspector and Massey as  
deputy inspector. J. S. Crawford, of Birtle,  
addressed the board on the subject of immigra-  
tion and explained that he was now going to  
the eastern provinces to endeavor to arrange for  
a series of excursion parties to Manitoba of a  
similar character to those he brought up last  
summer. The grain committee's report on the  
conference between representatives of the dif-  
ferent boards of trade in the Northwest, held  
last Friday evening, was adopted, and a resolu-  
tion passed adopting the form of the petition  
decided on at that meeting to the Dominion  
Government to make changes in the Inspection  
Act whereby the standards for Manitoba grains  
should be made in this city. A resolution of  
condolence on the death of C. J. Brydges, an  
ex-president of the board, was passed.

### Winnipeg Industries.

A great many people in Winnipeg are not aware of the extent to which the cigar manufacturing industry has been developed in this city, and if they were to drop into the cigar factory of Bryan & Co., they would be surprised at the busy scene presented. The factory is located on King street, numbers 27 to 31. There are four principal apartments in the building, used in the manufacture of cigars. Entering at and passing through the office, the first apartment is known as the raw leaf room, which is the term applied to this room by the excise officers. Here is kept the leaf tobacco after it is taken from the bonded room. The leaf tobacco is spread out or otherwise handled, before going to the work room. In the rear of this room is the leaf warehouse. This is a bonded apartment, for the storage of the leaf tobacco. The tobacco, as it is imported, is stored in this room in bond, and is consequently under the charge of the excise officers. Adjoining the leaf warehouse is another bonded apartment, where the cigars are stored as they are manufactured. It will therefore be seen that the cigars are manufactured in bond. This is done as follows:—The excise officer weighs the tobacco as it is taken from the leaf warehouse, and the manufacturers are obliged to return the equivalent to the leaf tobacco in cigars. The cigars are then locked up under the supervision of the officer, until required to be taken from bond. It takes about 21 pounds of leaf to make 1000 ordinary weight cigars. The books show the quantity of tobacco in and out of bond, and the number of cigars manufactured, etc.

The next and most interesting apartment is the work-room. This presents a busy scene, as twenty-three hands are at present engaged in manufacturing cigars. The hands are seated closely together at tables, engaged in rapidly manipulating the tobacco into the form of cigars. The factory is now turning out from 70,000 to 90,000 cigars per month. The men work by the piece, that is, they are paid for the number of cigars made. About \$10 per 1000 cigars is the average rate of wages. Only the better class of cigars are manufactured, as the demand here is mostly for a fairly good to choice cigar. The cheap class of goods is not as largely consumed here as in the east, and the few used are imported. Wages are higher here, and this, with the light demand for cheap goods, renders it hardly worth while endeavoring to compete with eastern manufacturers in cheap qualities of cigars. The leaf tobacco of the finer class, such as Havana and Sumatra leaf, is purchased in New York, and the seed leaf comes from Chicago. The labels have been mostly procured in New York, but latterly some large orders have been filled in Toronto. The label is quite an important point of the cigar trade. Bryan & Co., have their own labels, which are manufactured for them exclusively. Their principal brands are, La Rosa, Gems, Columbus, Selects, and Havana Whips. The cigar boxes are procured in London, Ontario, Janesville, Wisconsin, and St. Paul, Minnesota.

G. F. Bryan, principal of the firm, gives his personal attention to the business management

of the concern. Thos. Lee is the practical man of the firm. The advantage of having a thoroughly practical man in the firm, who can give a general oversight to the manufacturing department, is a very important consideration. One advantage in manufacturing cigars here is, that the leaf tobacco can be imported much more cheaply than can the manufactured goods.

The business of the firm has steadily increased from the commencement. Bryan & Co. began business here about two years ago, commencing with three hands. They were accorded a generous support from the start, and were soon obliged to move into larger quarters, at their present location, where they have room for a larger number of hands, the employees having increased in the two years from three to twenty-three. This is exclusive of the members of the firm and the traveller. The latter department is taken by H. C. Owen, who represents the house on the road. The cigars manufactured by the firm find sale over a wide extent of country, from Rat Portage, Ont., east, to Donald, B. C., west.

A few months ago, Bryan & Co. bought out the business of T. G. Fleeton, cigar manufacturer, of this city, and now they control the only factory here. This, however, does not enable them to have any monopoly in the line of prices, as the competition from eastern factories is very keen. Altogether the cigar factory of Bryan & Co. is one of the most important and prosperous of our home industries, and as such deserves encouragement, for the best way to build up our city and country is to support local enterprise.

### Propagating Salmon.

The *Colonist* newspaper, of Victoria, B. C., of Jan. 25th, gives the following account of the process of salmon propagation at the hatchery near Westminster:—

In another month the salmon fry at the Fraser River hatchery will be taken from the troughs in which they have developed from the pea-shaped pink egg into the wriggling salmon. The process of propagating salmon is a most interesting one, and the efforts of Thomas Mowat, fishery inspector, are proving abundantly successful. A representative of the *Colonist* paid a visit to the hatchery on the 2nd of January, and at that time in the half hundred troughs the salmon were in various stages of life. Some troughs contained myriads of the little fish, which, at the head of the current passing through, were lying fully an inch in depth, and literally without number. In others only a portion of the ova had reached the point of breaking through the shell, and this interesting operation could be witnessed. The ova was contained in wire baskets, the apertures of which were too small to admit of the tiny eggs falling through, but so soon as the embryo fish had kicked itself free from this it was possible for it to wriggle through to the running water below and take its chances with the thousands swimming there. Nature supplies them with the food necessary to keep them from want until that period when it is safe to transplant them from their birth place to the various streams, where they will have to shift for themselves. This food is contained in a

small sack and is gradually absorbed into the stomach, and really forms that necessary organ.

The artificial process of hatching guarantees about ninety per cent. of the eggs being transformed into fish, a much greater percentage than by the natural process. In depositing the eggs in the hole that has been made in the gravel by the parent salmon, there are many causes to prevent a proper deposit. Brook trout hover around ready to seize upon the eggs, or there may be a failure to attach the silt from the male fish upon them, or in their endeavor to hide the eggs the latter may be crushed by the heavy stones piled upon them. Altogether, the salmon ova has a greatly improved chance of springing into life when assisted by the hand of man than when relying altogether upon nature. The eggs when taken from the fish caught in the rivers, a difficult and trying task, are deposited in trays, which are in turn packed in moss and in boxes, so that not the slightest jar will take place. Even a slight disturbance of the ova in its fresh state while en route to the hatchery would cause the death of all. After having been safely placed in the wire baskets, which, by the way, is an improvement introduced by Mr. Mowat, on the old perforated trays, the eggs are constantly watched day after day by men employed in the hatchery. A diseased egg is noted and is removed by means of pincers. If allowed to remain among the healthy ones, the latter would soon all be contaminated and die. After all have kicked themselves loose from the shells, the crippled fish and those exhibiting disease are removed and no effort neglected to keep the infant salmon in good condition until they are distributed into the streams.

It is expected that fully five million salmon fry will be sent out this year, and in the course of four years they will in all probability return to the stream of their nativity, provided the fisherman's net does not stop them and land them in the canning factories on the river. That they do return is substantiated by the fact that there were more salmon in Harrison river last year than ever before, while Indians found sockeyes in the Cowichan river last year for the first time. The coming season will prove, beyond peradventure, the benefit derived from the salmon hatchery, for the time has expired in which the fish hatched out in the year 1884-85 should attain maturity.

Considering the character of the work of securing and hatching the salmon, the cost of the hatchery to the government, is very nominal, and is due to the excellent direction of the painstaking inspector, Mr. Mowat.

DUNMORE, Assa., is said to be assuming the proportions of a village. Dunmore is about eight miles east of Medicine Hat, and is located at the point where the N. W. C. & N. Co.'s railway (Galt road) forms a junction with the C. P. R. The former road is at present a narrow gauge railway, but it is quite probable that it will be widened to the standard width this year. Ties for that purpose are being taken out in the mountains this winter. Two stores have been opened at Dunmore recently—one by W. T. McGarry, of Maple Creek, and one by Blackburn & Dickson. A colony of Germans and Austrians are settling in the vicinity of the place.



## Business East.

## ONTARIO.

R. H. Young, jeweler, Harriston, is dead.  
 Geo. Ellis, grocer, Hamilton, has assigned.  
 H. Edwards, livery, Woodville, has sold out.  
 J. Doherty, clothing, Ottawa has assigned.  
 T. M. Parker, grist mill, Rockwood, is away.  
 J. J. Hanna, shoes, Uxbridge, has assigned.  
 G. W. Goddard, furniture, Alliston, has sold out.  
 J. Stivel, hotelkeeper, Ringwood, has sold out.  
 Moses Aubrey, tobacconist, Ottawa, has sold out.  
 Allingham Bros., grocers, Sarnia have sold out.  
 Mrs. R. A. Norman, millinery, Picton, is dead.  
 M. Cohen, confectionery, Chatham, has assigned.  
 Alfred Lemieux, painter, Ottawa, has assigned.  
 A. J. Wilkinson, grocer, Toronto, has assigned.  
 J. J. Markle, contractor, Toronto has assigned.  
 W. C. Smith, general store, Blenheim, has failed.  
 Preston & Lee, general store, Bethany, burned out.  
 R. Uglow, stationer, Ottawa, stock damaged by fire.  
 T. Brady, dry goods, Brockville, has suspended.  
 Mrs. John Baker, hotelkeeper, Lynden, has assigned.  
 E. Overell & Co., stationery, Hamilton, have assigned.  
 Cornell & Co., drugs, etc., Wardsville, have assigned.  
 J. R. Gordon, manufacturer, Toronto, has assigned.  
 Hargreaves Bros., druggist, Brussels, have sold out.  
 E. W. Johnston, hotelkeeper, Lindsay, has sold out.  
 James Notter, liquor dealer, Owen Sound, has sold out.  
 Boyd & Hanrahan, contractors, Toronto, have dissolved.  
 J. S. Patterson, shoes, Caledonia, is moving to Simcoe.  
 R. G. Moggridge, fancy dry goods, Toronto, has sold out.  
 E. Brown, shoes, and groceries Courtright, has sold out.  
 H. Bryant, groceries and liquors, Hamilton, has sold out.  
 T. McCrosson, tailor, Cayuga, is offering to compromise.  
 Donald M. Brown, books, etc., Strathroy, is burned out.  
 H. E. McKay & Co., general store, Milton, have assigned.  
 J. C. Richardson & Co., general store, Beeton, have dissolved.  
 Blackwood & Godden, hardware, Toronto, have dissolved.  
 John Mathers & Son, carriages, etc., Stayner, have dissolved.  
 Kennedy & Broderick, butchers, Toronto, have dissolved.

A. D. Cameron, dealer in wood and coal, London, is dead.  
 R. McGiffin, gents' furnishings, Ottawa, stock damaged by fire.  
 A. McDonnell, groceries, shoes, etc., Watford, burned out.  
 Budd Bros., carriages, Woodstock, have dissolve partnership.  
 Ball & Gordon, hardware, Guelph, intend giving up business.  
 W. F. Campbell, general storekeeper, Bearbrook, has assigned.  
 Robert Strong, shoes, Brantford, has had a meeting of creditors.  
 John Hookless, general storekeepers, Shelburne, has assigned.  
 J. Kelly, stoves, etc., Toronto, has called a meeting of creditors.  
 Risley & Kerrigan, wholesale hardware, Toronto, have assigned.  
 A. J. Smith, harness maker, Cannington, has removed to Woodville.  
 Smithers & Berkshaw, dry goods, Toronto, are asking an extension.  
 N. McGarvin, drugs, Acton and Elora, is closing the Elora branch.  
 P. T. Green, dealer in tobacco, Ottawa, stock slightly damaged by fire.  
 Kenney Bros., tailors, Ottawa, stock is slightly damaged by fire.  
 Larose & Co., dry goods, Ottawa, stock slightly damaged by fire.  
 The Toronto Stove and Manufacturing Co., Parkdale, are in liquidation.  
 J. F. Ottwell, fruit canner, St. Marys, has called a meeting of creditors.  
 Robert Walker & Sons, dry goods, London, advertise their business for sale.  
 Boyd & Hanrahan, builders, etc., Toronto, business is advertised for sale.  
 E. A. Levian & Co., gents' furnishings, etc., Toronto, are seeking an extension.  
 John Head, dry goods, Woodstock, is offering a compromise of 50c in the dollar.  
 Greer & Wigmore, painters, etc., London, have sold their wall paper business.  
 J. C. North, shoes, Picton, has changed the style of firm; now J. C. North & Co.  
 A. D. McDonald & Co., general storekeepers, Arkona and Petrolia, have assigned.  
 John Montgomery, shoe dealer, New Market, is selling off and closing out business.  
 French & Ramsay, tailors, Toronto, are selling out at auction, and giving up business.  
 Jas. Watson, dealer in spices, Toronto, is offering a compromise at 50c in the dollar.  
 W. R. Bingham, hotelkeeper, Toronto, is offering a compromise of 20c in the dollar.  
 D. Perkins, general storekeeper, Greenback, has effected a settlement at 70c in the dollar.  
 F. Quay & Co., fancy goods and stationery, Toronto, stock is advertised for sale by auction on 1st prox.  
 Haycroft & Turnbull, tins, Brussels, have changed the style of their firm; now Turnbull & Ballantyne.  
 A. Ballantino & Bros., groceries and liquors, Hamilton, have dissolved; each continues business on his own account.  
 Stevens, Clark & Stevens, boot and shoe manufacturers, London, have admitted John H. Glass into partnership, and the style of the firm is now Stevens, Glass & Clark.

W. G. Van Staden & Co., hubs, Sarnia, have dissolved—Van Staden & Richardson continue business under the old style.

C. S. Hymau & C., boot and shoe manufacturers and tanners, London, have dissolved by the retirement of Watson & Glass, and have sold out their boot and shoe business, and will continue the tannery under the old style.

## QUEBEC.

Major Wilfrid, grocer, Montreal, has assigned.  
 Louis Bureau, saddler, Quebec, has assigned.  
 Narcisse Turcot, jeweler, etc., Quebec, is dead.  
 L. O. Villeneuve, dry goods, Quebec, has assigned.  
 Jos. P. Dusablon, saddler, Three Rivers, has assigned.  
 Roy & Freres, hotelkeepers, Montreal, have dissolved.  
 J. A. Demers, dry goods, Levis, is offering to compromise.  
 Joseph Adams, harnessmaker, Huntington, has assigned.  
 W. R. Crepault, dry goods, Kamouraska, has assigned.  
 J. C. E. Montreuil & Co., grocers, Quebec, have assigned.  
 L. N. Vincent, saddler, Coaticook, is asking for an extension.  
 A. M. Allan & Co., tailors, Montreal, is offering a compromise.  
 Jos. Martineau, general storekeeper, Stanford, has assigned.  
 Earle Bros., wholesale stationers, Montreal, have compromised.  
 J. B. A. Mongenais, general storekeeper, Rigaud, has sold out.  
 Pierre Vallieres, shoes, Three Rivers, has had a meeting of creditors.  
 Galibert Bros., manufacturers of gloves, etc., Montreal, have dissolved.  
 Theo. Hart & Sons, marine insurance brokers, Montreal, have dissolved.  
 Major Wilfred, grocer, Montreal, has made a demand for an assignment.  
 Avila Dubois, hotelkeeper, Montreal, has called a meeting of creditors.  
 G. A. Drouin, shoes, Drummondville, has called a meeting of his creditors.  
 Emmanuel Strickland, Sr., general storekeeper, Buckingham, has assigned.  
 Guimond & Co., general store, St. Raymond, has made a demand for an assignment.

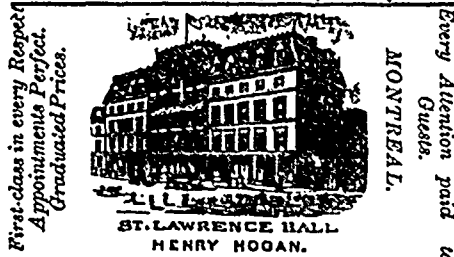
## NOVA SCOTIA.

D. A. McIsaac, general store, Sydney, has assigned.  
 H. T. Gilroy & Co., general store, Oxford, have assigned.  
 Chas. Fraser, general storekeeper, Spring Hill, has assigned.  
 J. R. Saunders, tobacco, fancy goods, etc., Halifax, has assigned.

## NEW BRUNSWICK.

T. Roberts, trader, Buctouche, has assigned.  
 W. H. Sherwood, grocer, St. John, has sold out.  
 D. W. Clark & Sons, saw mill, Carleton have failed.  
 P. S. McNutt & Co., dealers in agricultural implements, St. John, have dissolved.  
 P. E. ISLAND.  
 W. B. Robertson & Co., agricultural implement dealers, Charlottetown, have dissolved.  
 Perry Bros., general storekeepers, Tignish, are offering to compromise at 35c in the dollar.

**FISH, HYMAN & CO.,**  
Importers of  
**FINE HAVANNA CIGARS**  
212 St. James St., MONTREAL.



**CAUTION !**  
EACH PLUG OF THE  
**Myrtle Navy**  
IS MARKED  
**T. & B.**  
IN BRONZE LETTER.  
NONE OTHER IS GENUINE.

**Jos. Schilitz Brewing Co's**  
MILWAUKEE EXPORT BOTTLED  
AND DRAUGHT  
**LAGER !**  
PERMITS FILLED  
GEO. VELIE, Agent for Manitoba and the Northwest,  
WINNIPEG.

**DICK, BANNING & CO**  
MANUFACTURERS OF  
**Lumber, Shingles and Lath,**  
DOORS AND SASH.  
MILLS AT KEEWATIN. OFFICE : OPPOSITE C.P.R.  
PASSENGER DEPOT, WINNIPEG.

**Toronto Hide & Wool Co**  
Wholesale Dealers in  
**HIDES !**  
SHEEPSKINS AND WOOL  
**JOHN HALLAM**  
88 Princess St., WINNIPEG  
83 and 65 Front Street East, - TORONTO.  
PROPRIETOR.

Frank ightcap, - Traveler.  
We will be in the market this season  
as usual for all classes of Wool, and  
are prepared to pay the highest market  
prices.

**E. A. SMALL & CO.,**  
MANUFACTURERS OF  
**CLOTHING**  
WHOLESALE  
203 and 210  
McGILL STREET, **MONTREAL**  
SAMPLE ROOMS :  
30 AND 32 McINTYRE BLOCK,  
WINNIPEG.

**COCHRANE, CASSILS & CO.**  
**Wholesale Boots and Shoes**  
Cor. Craig & St. Francis Xavier Sts.,  
**MONTREAL.**  
Samples with McLean Bros.,  
Donaldson's Block, WINNIPEG.

**ROYAL SOAP MFG. CO.**  
WINNIPEG.  
BRANDS: Hardwater, Dominion, Linen, Ivorine  
and Electric, also a full line of Toilet Soaps.

Of All Wholesale Dealers  
**The Canadian Rubber Co**  
OF MONTREAL.  
Manufacturers of  
RUBBER SHOES, FELT BOOTS,  
RUBBER PACKING, HOSE, &c.  
WORKS: Papineau Square, Montreal  
WAREHOUSE: 335 St. Paul St.  
Branch: Cor. Front & Yonge Sts., Toronto.

**W. R. Johnston & Co.**  
(Late Livingston, Johnston & Co.)  
WHOLESALE MANUFACTURERS  
**READY-MADE CLOTHING**  
44 BAY STREET,  
TORONTO.

EVERY VARIETY OF  
**Painters Brushes,**  
**Artist Brushes,**  
**Household Brushes,**  
**Stable Brushes,**  
**Toilet Brushes,**  
—MANUFACTURED BY—  
**Chas. Boeckh & Sons,**  
TORONTO.

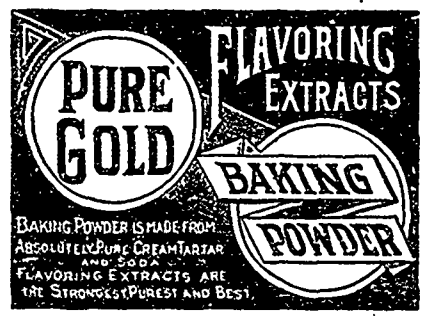
All our Brushes are branded **'BOECKH'**  
to distinguish them from inferior imitations  
and as a guarantee of their quality.

JAMES WHITHAM. A. A. ABEY, Special Partner  
**James Whitham & Co.**  
Manufacturers of & Wholesale Dealers in  
**BOOTS and SHOES,**  
43, 45 and 47 St. MAURICE STREET  
Near McGill Street,  
**MONTREAL.**  
Represented by J. M. MACDONALD,  
525 MAIN ST., WINNIPEG



**Home Production**  
WE MANUFACTURE  
**BARB WIRE,**  
**PLAIN TWISTED WIRE,** WITHOUT BARBS  
And are Agents for the  
**Woven Wire Fencing.**  
We are in a position to fill all orders promptly.  
Ours is the only wire manufactured in the Dominion of  
Canada on which is found the **GENUINE LOCK BARB**  
A personal inspection will convince you of this fact. Quality  
of wire the best **ENGLISH BESSEMER STEEL**  
Every pound guaranteed.  
**Manitoba Wire Company**

**OGILVIE MILLING CO.**  
Mill at Point Douglas  
Capacity - - - 1000 Barrels per day.  
OFFICE :—Corner King and  
Alexander Streets, Winnipeg.  
A Full Stock of Patent Hungarian, Strong  
Bakers' and Spring Extra Flour; Oatmeal, Pot  
and Pearl Barley, Graham Flour, Cracked  
Wheat, Bran, Shorts, Ground Feed, Oats,  
Barley.  
Wheat buyers at all C.P.R. Shipping Stations



**Printers' Supplies**  
**WARWICK & SONS**  
Booksellers, Publishers, Bookbinders, Manu-  
facturing Stationers, Printers, etc., Printers and  
Binders to the Ontario Government.  
TORONTO, ONT.  
Printers' Supplies in great variety. Full Lines  
of Printing Papers, Flat Papers, Cardboard, &c  
WRITE FOR PRINTERS' CATALOGUE.

Have you received a Copy  
of our POCKET MEMO  
Book? If not apply  
to us for one,

**STOBART, SONS & CO.,**

WHOLESALE

**Dry Goods**

WINNIPEG, Manitoba, and LONDON, England.

**Grant & Horn,**

PRODUCE  
—AND—

Commission Merchants,  
56 Princess Street, WINNIPEG

EXPORTERS

Of Flour, Butter, Eggs and Cheese.

Always carry in Stock

**BAGS**  
For Flour, Bran, Oats, etc.—Jute and Cotton.

**SALT**

(Canadian and Liverpool)

Frost Proof and Cold Storage.

CONSIGNMENTS SOLICITED.

Owing to the mildness of the winter ice on the coast is a scarce commodity. The Canadian Pacific Navigation Co. is getting a number of car-loads from Ashcroft, 200 miles inland. The cost of each car-load of 12 tons, laid down at Victoria, is \$100.

The Dominion Government has placed the sum of \$10,000 in the estimates for the improvement at the mouth of the Fraser river. The Government seems very slow to realize the importance of improving the navigation of the Fraser river, judging from this small appropriation. The Westminster council will ask for a larger grant.

The smelter at Vancouver has been completed, and operations will be begun at once. There are now 12 tons of ore at the works, mostly from the mine at Field. This is the first smelter in the province, and marks a new era in the development of the mineral wealth of British Columbia. To Vancouver's enterprise is largely due the success of this undertaking.

Vancouver News: A meeting of several of the citizens of Vancouver who are desirous of extending operations in the deep sea fish ries, was held last night. It was decided to organize a company by the name of "The Vancouver Fisheries Company, Limited," with a capital of \$100,000, of which \$25,000 was to be the first issue. Half of this sum was subscribed by those present. The outline of the organization was completed and a board of provisional directors appointed to take steps to incorporate the company and receive additional stock subscriptions.

The Victoria Times says:—Operations during the week in the expected pack of the approaching season have been unusually active, and of a decidedly cheering nature to cannery proprietors. The fact of San Francisco buyers competing has caused the English dealers to enter the field at an earlier period than usual and in order to effect contracts they have liberally outbid the California operators. Twenty-nine shillings and nine pence per case ex ship has been reached and possibly higher rates will be obtained for the few

**THE LANGHAM HOTEL,**  
BRANDON, - MANITOBA.

Situated on 12th Street. Free Bus meets all trains. Commercial Sample Rooms. Newly furnished throughout. Every room heated by steam.

JAS. W. NEALON, Prop. A. W. LEFLAR, Mang'r.

**ANGLO - AMERICAN HOTEL ! !**  
GRENA, - - MAN.

J. D. PIERSON well known to the commercial trade throughout the west, has lately taken charge of this house and fitted it up with Sample Rooms and every convenience for Commercial Travellers

**WOLSELY HOUSE,**

WOLSELEY, ASSINIBOIA,  
E. A. BANBURY, PROPRIETOR.

Headquarters for Commercial Men. This house has been recently refitted with special reference to the convenience and comfort of the commercial trade. Good Sample Rooms. Livery in Connection.

**QUEEN'S HOTEL,**

QU'APPELLE, ASSINIBOIA  
G. S. DAVIDSON, PROP.

Largely patronized by commercial men and possess special features for the accommodation of this trade. Large Sample Rooms Free.

**Cosmopolitan Hotel,**

MEDICINE HAT, - - - ASSA,

Headquarters for commercial travellers and tourists. Good Sample Rooms and clean and comfortable sleeping apartments.

THOMAS BASSETT, Proprietor.

**STEWART HOUSE**

COR. MAIN & ELLIS STS., MANITOU, MAN.  
First-Class in every respect! Re-fitted! Re-furnished  
Good Table! Good Rooms! Three best Sample Rooms  
in the Province.

ROUNTREE & CONNOR, Proprietors.

**HILLIARD HOUSE**

RAT PORTAGE.

The Palace Hotel of the Northwest, Ontario. Newly and elegantly furnished throughout. The only Commercial House in the district. First class Sample Room. Terms Reasonable.

LOUIS HILLIARD, PROPRIETOR

**PALMER HOUSE,**

REGINA, ASSINIBOIA,

THE LEADING COMMERCIAL HOUSE.  
Free Sample Rooms for Travellers. Opposite  
C.P.R. Station.

CHAS HARLEY, Prop.

**J. F. McLAUGHLIN & BRO.,**

WHOLESALE

**Grain, Flour and Feed**

MERCHANTS.

SEND SAMPLES AND PRICES TO

TORONTO, - ONT.

**DOLL**

W. F.

WHOLESALE JEWELER.

Watches, Diamonds, Clocks, Spectacles,  
Gold-headed Canes, Silver-plate, Watch  
Material, Tools, etc., etc.

525 Main St., WINNIPEG.

**British Columbia.**

Martin & Balfour, hotel, Vancouver, have sold out.

A. J. Marks, painter and paper hanger, Vancouver, has moved to the States.

Painters at Victoria have succeeded in reducing the hours of labor per day to nine hours.

E. M. Mathews, manager of the Hotel Vancouver, will sever his connection with that hostelry.

Real estate in the three coast cities is said to be active. Property is advancing in value at Victoria, Vancouver and Westminster.

Exports of coal for the month of January were 42,135 tons, valued at \$252,810. The freight rate on coal to San Francisco is \$3 per ton.

McArthur, Stevenson & McIver, who will succeed W. R. McGaw, general dealer, Kamloops, have purchased the bankrupt stock of Mrs. Morton, consisting of millinery, fancy goods, etc.

remaining packs unsold. Such figures ensure a very profitable return to owners provided the catch should reach an ordinary average.

The president and council of the Vancouver board of trade have issued invitations for their first annual banquet, which is to take place at the Hotel Vancouver on Tuesday, March 5. With the usual enterprize displayed by the business people of Vancouver, the board is going into the banquet scheme in no half-hearted way. Invitations have been sent to the Lieutenant-Governor, the members of the Provincial Ministry and the Legislature, the Chief Justice, the mayors of the various cities and the reeves of the municipalities, the presidents of the boards of trade of Victoria and Westminster, the senators and members of the House of Commons from British Columbia, and many other prominent persons.

**Dairy Matters.**

Arrangements have been completed to establish a creamery at Broadview, Assa.

Application is being made to the Qu'Appelle council on behalf of the creamery project of S. H. Caswell to have the creamery exempted from taxation for a period of ten years.

Mr. Fisher moved in the Manitoba Legislature, the second reading of the bill to provide for the incorporation of cheese and butter manufacturing associations. He explained that the machinery for this purpose had not been sufficiently simple, it being necessary to obtain letters patent under the joint stock companies act which was cumbersome, and also expensive but for the provision for remitting the charges. The bill provides that five or more persons may sign a declaration stating their intention to enter upon such an enterprise; upon their doing so according to a form appended to the bill and forwarding the document with certain formalities to the Minister of Agriculture, they become incorporated. Another provision is that the Association must frame a set of rules which are also to be forwarded to the Minister of Agriculture and filed with him. There is no liability beyond the amount each one subscribes. Some time in January each year a return is to be made of the business of the Association to the Minister.

**General Trade Notes.**

Chas. S. Watson, president of the Montreal Rolling Mills Company, has been chosen to fill the position on the Board of the Bank of Montreal vacant by the death of Alex. Murray.

At the annual meeting of the Merchants Manufacturing Company (St. Henri Cotton Mill) in Montreal, the old board was re-elected. A. A. Ayer was again chosen president, and R. Mackay vice-president.

The total liabilities of J. W. Gale & Co. wholesale dry goods, Toronto, are \$164,659, and assets \$104,957. British firms are interested to the extent of \$51,952 and Canadian and American creditors to the amount of \$60,878.

H. R. Ives & Co., manufacturers of iron and steel goods, Montreal, have recently enlarged their works, for the purpose of manufacturing

architectural work in iron, of every description, including iron stairs, railings, gates, grille work, etc.

Risley & Kerrigan, wholesale hardware, Toronto, showed liabilities of \$130,000 and assets \$113,000 at the meeting of creditors. No offer was made and E. R. C. Clarkson, to whom the firm assigned, will likely be instructed to wind up the estate.

A. F. Galt, Chas. Garth, E. K. Greene, J. Groni; J. K. Ward, R. L. Gault and S. H. Ewing were re-elected directors at the annual meeting of the Montreal Cotton Company. At a subsequent meeting of the newly elected directors A. F. Galt was re-elected president and Chas. Garth vice-president.

A Halifax, N. S., telegram says: The past year has been another one of magnificent profits for the Nova Scotia sugar refinery. The concern pays a dividend of 15 per cent. and a bonus of 10 per cent. as a result of the year's operations. It is understood that the capital stock of the company is to be doubled, each shareholder receiving two shares where he now holds one without any new outlay. The present capital is \$150,000.

**Business at Vancouver, B. C.**

Real estate during the past week has been changing hands in a very lively manner and while the vast majority of the purchases have been small, several very heavy transactions have been made. In the east end during the last few days land has risen rapidly in price and is still increasing. This state of things is partly owing to the rumor that the Northern Pacific railway is coming in there. A considerable amount of money is coming from the east and is being at once invested in lots. In a number of cases persons who have come from other parts simply for the purpose of speculation have concluded to take up their residence in Vancouver.

The volume of general business has been large and collections the merchants report easy. Freight is beginning to move quickly. The retail market during the week has been kept well supplied. Prices have remained steady except in roots and dairy produce, the former having increased and the latter has lowered. A great many eggs have arrived from the Sound ports and shipments have even arrived from Montreal, the early spring having frustrated the attempt to keep up prices.—Vancouver News-Advertiser.

Quotations are as follows:—

Flour—Manitoba patents, \$6.65 per bbl; Manitoba bakers', \$6.25; Oregon family, \$5.65. Oatmeal—Standard, 100 lb. sacks, \$3; granulated, \$3.25; rolled, \$4.

Potatoes—\$14 to \$18 per ton; cabbage, \$12; carrots, \$20; parsnips, \$20; onions, \$25; beets, \$15; turnips, \$15 to \$20; sweet potatoes, \$6 per cwt.

Feed—Bran, \$24 per ton; shorts, \$25; chopped stuff, \$30 to \$32; oil cake meal, \$40; cracked corn, \$33; oats, \$26; wheat, \$35 per ton.

Butter, creamery, 29c per lb; dairy, 25 to 28c; eggs, 20 to 25c; fresh, farm eggs, 45c; cheese, 13 to 15c per lb.

Fruits—Sicily lemons (strictly fancy) \$6.50 per case; oranges, Riverside navals, \$5.50 per case; Riverside seedlings, \$4.50; Californias, \$3.37; new Japanese, \$1.25 per box; apples, \$1.75.

Fish—Cod, 9c; salmon, 10c; Labrador herring \$14 per bbl; Finnan Haddie, 15c per lb; Georgia Bank cod, 12c per lb; Yarmouth bloaters, \$3 per box.

The Echo printing office and Alex. Morrison's barber shop, Banff, have been destroyed by fire. No insurance.

The residence of W. D. Ruttan, general merchant, Manitou, Man., was burned last week. Insured for \$300. The residence of Mr. Young, a joiner, was also burned. Insured for \$200.

In the sudden death of the late C. J. Brydges, which occurred on Saturday afternoon, Feb. 16, the city of Winnipeg has suffered a severe loss. Mr. Brydges was well known throughout all Canada, through his honorable connection, successively, with the Great Western, the Grand Trunk, and Intercolonial railways, of this country. Mr. Brydges came to Winnipeg as Land Commissioner for the Hudson's Bay Company, and during his residence here he has taken an active part in charitable and other work in the interest of the community, but always refusing to identify himself with political squabbles and popular agitations. He filled the position of president of the Winnipeg board of trade for a season, and for years has been the mainstay of the Winnipeg general hospital. Mr. Brydges died suddenly from an attack of paralysis of the heart, while visiting the hospital on the date named, thus passing away within the walls of the charitable institution for which he has done so much.

A short time ago reference was made in these columns to the dissolution of the large and well known firm of E. Penner & Co., doing business as general merchants at several points in southern Manitoba. It was then stated that E. Penner would continue the business at Gretna, and that Messrs. Schultz and Hansen would continue the business at Morden. The firm was composed of E. Penner, Otto Schultz and H. P. Hansen, and business was carried on at Gretna, Morden, Reinland and Plum Coulee. We now have to add that E. Penner will continue the business at Reinland as well as at Gretna, under the old style of E. Penner & Co. Messrs. Schultz and Hansen have formed a partnership, and they have also taken in A. W. Stiefel, who has been book-keeper at the Morden store for some time. They will do business under the style of Schultz & Hansen, and will continue the stores at Morden and Plum Coulee. They have also erected a store building at Gretna and will open a general store at the latter place in a few days. Mr. Hansen will remain at his old post at Morden, and Mr. Schultz will take the Gretna business, where he will be assisted by Mr. Stiefel, and which will be made the head office. The new firm decided to open business at Gretna owing to the fact that they have a large quantity of goods at Gretna as their share of the stock of E. Penner & Co., it having been decided to divide the stock in this way.

This book, "The New West," recently issued by the Canadian Historical Publishing Co., has been received with favor, and is being widely circulated throughout the country. It is undoubtedly the best work of the kind yet published, and it should do a great deal in making known the advantages and resources of Western Canada.

A FACT which even political economists are apt to forget is that a manufacturer's rate of profit is not the only essential element to success, the aggregate profit at the end of the year is of far greater importance, and this in most cases is greater out of a low rate of profit than out of a high rate, because of the increased business, which the lower price gives rise to. It was on this principle that Messrs. Tuckett & Son acted in introducing their famous "Myrtle Navy" tobacco, and to this principle they have ever since adhered. This is one of the reasons why the people of Canada are smoking the best tobacco which can be produced, at a cheaper price than any other people can buy a similar article.

THESE VESTIBULED TRAINS go in service May 15th.

Chicago, St. Paul, Minneapolis & Omaha Ry THE NORTHWESTERN LINE,

The best equipped line to CHICAGO, OMAHA AND KANSAS CITY.

The ONLY line to Chicago running Pullman and Wagner Vestibuled Trains.

These Vestibuled Trains are limited as to time but not limited as to number of passengers. All classes of passengers carried, with separate apartments for each class, and EXT FARES.

The special train will run as follows: Leave Minneapolis 8 p.m. Arrive Chicago 7:40 a.m. Leave Chicago 7:30 p.m. Arrive Milwaukee 7:40 a.m.

The sleeping car service on these trains has been prepared especially for the service, and together with the Vestibuled Dining Cars, Cigar and Baggage Cars are the finest equipped trains of their class in the world.

Tickets for Lower Rates, and good on these Vestibuled Trains, can be secured at the following offices: St. Paul, 159 East Third Street; Minneapolis, 13 Nicollet House Block, Duluth, 112 West Superior Street, also at St. Paul and Minneapolis Union Depots and at offices of connecting lines. Sleeping car accommodation secured in advance.

NOTE—The above advertised times are the actual running time, and the motto of the Northwestern Line is "ALWAYS ON TIME."

E. W. WINTER, General Manager. V. B. CLARKE, General Traffic Manager. T. W. TESSDALE, General Passenger Agent.

MINNEAPOLIS & ST. LOUIS RAILWAY

—AND THE FAMOUS—

Albert Lea Route

Two through trains daily from St. Paul and Minneapolis to Chicago without change, connecting with the best trains of all lines for the East and Southeast.

The direct and only line running through cars between Minneapolis and Des Moines, Iowa, via Albert Lea and Fort Dodge.

Short line to Watertown, Dak.

Solid through trains between Minneapolis and St. Louis and the Principal Cities of the Mississippi Valley, connecting in Union Depot for all points south and Southwest.

Many hours saved and the only line running two trains daily to Kansas City, Leavenworth and Atchison, making connections with the Union Pacific and Atchison, Topeka & Santa Fe Railways.

Close connections made in Union Depot with all trains of the St. Paul Minneapolis & Manitoba, Northern Pacific, St. Paul & Duluth, Minneapolis, St. Paul &ault Ste. Marie Railways, from and to all points North and Northwest.

Remember: The trains of the Minneapolis and St. Louis Railway are composed of comfortable day coaches, magnificent Pullman Sleeping Cars, Horton reclining chair cars, and Palace Dining Cars.

150 lbs of baggage checked free. Fare always as low as the lowest. For time tables, through tickets, etc., call upon the nearest ticket agent, or write to

S. F. BOYD, Gen. Ticket and Pass. Agent, MINNEAPOLIS Minn

Northern Pacific & Manitoba Ry.

ARRIVE DAILY		LEAVE DAILY	
6 15 p.m.	Winnipeg	9 10 a.m.	
6 05 "	Portage Junction	9 20 "	
6 43 "	St. Norbert	9 40 "	
6 27 "	St. Agathe	10 20 "	
4 42 "	Silver Plains	10 47 "	
4 20 "	Morris	11 10 "	
4 01 "	St. Jean	11 23 "	
3 43 "	Catharino	11 55 a.m.	
3 20 "	West Lynn	12 20 p.m.	
3 05 p.m.	Pembina	12 35 "	
6 25 a.m.	Winnipeg Junction	8 60 "	
8 35 p.m.	Minneapolis	6 35 a.m.	
8 00 "		7 05 "	
6 40 "	Helena	4 00 p.m.	
3 40 "	Garrison	6 15 "	
1 05 a.m.	Spokane	9 45 a.m.	
8 00 p.m.	Portland	6 30 "	
7 40 "	Tacoma	3 50 "	
4 30 "	"Via Cascade"	6 40 "	

P.M.	A.M.	A.M.	P.M.	P.M.
2 30	8:00	7:30	3:00	7:35
P.M.	A.M.	A.M.	P.M.	P.M.
10 30	7 00	0:30	9:00	3:10
P.M.	P.M.	A.M.	P.M.	A.M.
6 45	10 15	6:00	7:15	10:4
A.M.	P.M.		A.M.	P.M.
9 10	9:05		9:10	9:05
A.M.	P.M.		A.M.	P.M.
7 00	7:50		8:30	8:50
A.M.	P.M.		A.M.	P.M.
8 30	3:00		9:35	10:50
A.M.	P.M.		P.M.	A.M.
9 00	8:30		8:15	8:15

Pullman Palace Sleeping Cars and Dining Cars on every train.  
J. M. GRAHAM, General Manager. H. SWINFORD, General Agent

N. W. C. & N. Co's Railway

TIME TABLE.

Read Down.	STATIONS.	Read Up.
GOING EAST.		GOING WEST.
No. 1 Daily.		No. 2 Daily.
14 09 De	Lethbridge	Ar 1 30
15 50	Woodpecker	23 35
16 00	Purple Springs	22 40
17 45 Ar	Grassy Lake	21 45
18 00 De		22 40
18 50	Cherry Coulee	20 55
20 09	Winnifred	De 20 00
20 55	Seven Persons	Ar 19 55
22 10 Ar	Dunmore	De 18 45
		De 17 30

E. T. GALT, Manager, Lethbridge. J. BAILEY, Supt., Lethbridge.

Manitoba and Northwestern Ry.

CHANGE OF TIME.

Taking Effect November 24th, 1888.

PASS	Miles	STATIONS.	PASS
Tuesday	from		Monday
Thursday	Portage		Wednesday
and			and
Saturday			Friday
LEAVE		Portage la Prairie	ARRIVE
16 00		Gladstone	15 30
17 45	35	Neepawa	12 05
18 45	61	Minnedosa	10 33
19 45	79		9 55
20 50	94	Rapid City	8 30
21 30	115	Shoal Lake	8 00
22 30	133	Birtle	7 00
23 30	155	Binscarth	6 55
24 10	166	Russell	5 15
24 40	180	Lanenburg	7 15
1 15	206	Saltcoats	3 40
ARRIVE			LEAVE

Trains for Binscarth leave Birtle Tuesdays and Saturdays only at 22 50, returning leave Binscarth Wednesdays and Mondays only at 5 55. For Russell leave Birtle Tuesdays only at 22 50, returning leave Birtle Wednesdays only at 5 15. For Lanenburg and Saltcoats leave Birtle Saturdays only at 22 50, returning leave Saltcoats Mondays only at 3 40. For Rapid City leave Minnedosa Tuesdays, Thursdays and Saturdays at 20 00, returning leave Rapid City Mondays, Wednesdays and Fridays at 8 30. Above trains connect at Portage la Prairie with trains of the Canadian Pacific Railway to and from Winnipeg. For information as to Freight or Passenger Rates apply to A. Macdonald, Assistant Freight and Passenger Agent, Portage la Prairie, or to W. R. BAKER, General Superintendent.



Northern Pacific

And Manitoba Railway.

The Only Line Running

A VESTIBULED TRAIN

Pullman Sleepers and Dining Cars From Winnipeg to the South.

Through Tickets

—SOLD—

TO ALL POINTS IN CANADA

Including British Columbia and the United States, making close connections at all Union Depots.

All Baggage destined for points in Canada Checked Through, doing away with Customs Troubles.

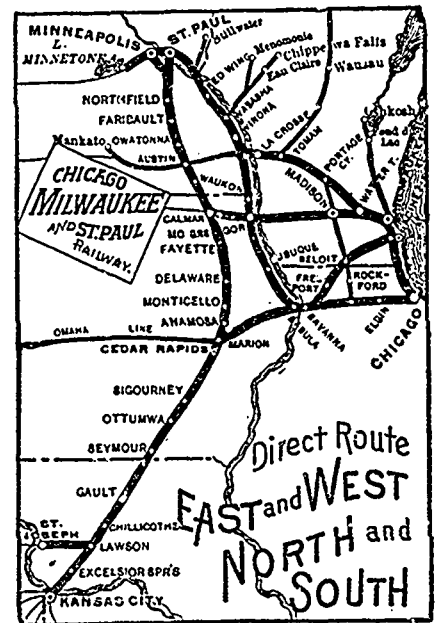
Ocean Passage and Berths Secured To and from Great Britain and Europe. All first-class Steamship Lines represented.

Round Trip Excursion Tickets To Pacific Coast, Good for Six Months.

For full information call on or write to any of the Company's Agents,

H. J. BELCH, City Ticket Agent, 285 Main St., Winnipeg. HERBERT SWINFORD, General Agent, 457 Main St., Winnipeg. J. M. GRAHAM, General Manager.

Chicago, Milwaukee and St. Paul Railway.



For tickets, time tables, or any information in regard to the line, apply to any ticket agent in the Northwest, or to W. H. MILLER, Ass't Gen'l Mgr., Agent, 162 East Third Street, St. Paul, Minn.

ROSWELL MILLER, General Manager. A. V. H. CARPENTER, Gen'l Pass. and Ticket Agt. J. F. TUCKER, Ass't Gen'l Manager. G. H. HEAFFORD, Ass't Gen'l Pass. and Ticket Agt.