

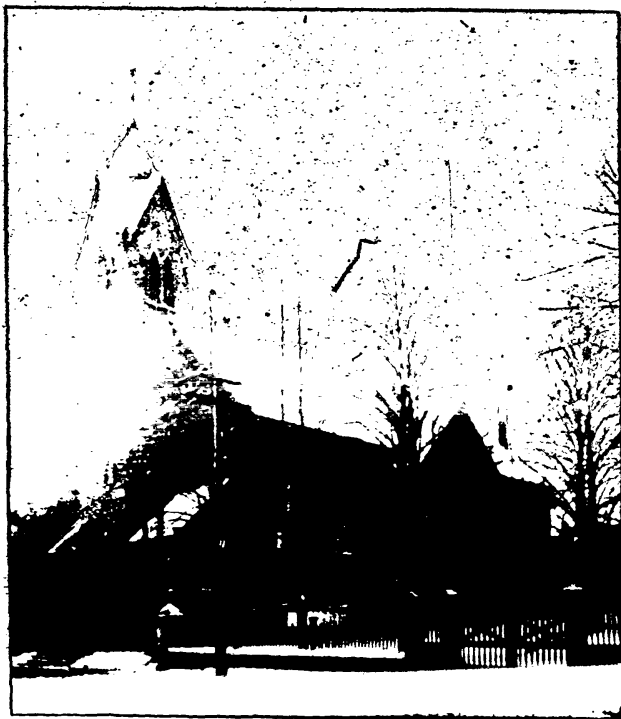
Take with you and keep for reference at home.

Our Calendar.

VOL. 3.

NOVEMBER 4, 1900.

No. 43



THE NORTH BAPTIST CHURCH.

GOTTINGEN STREET, HALIFAX, N. S.

REV. Z. L. FASH, M. A., Pastor,

RESIDENCE, 15 BLACK STREET.

THIS IS THE PEOPLE'S CHURCH HOME.

A Hearty Welcome For Everyone, Come Again.

For the Week Beginning Nov. 4, 1900.

Daily Bible Readings.

MON.—Ps. 31. TUES.—Ps. 32. WED.—Ps. 33. THURS.—Ps. 34.
FRI.—Ps. 35. SAT.—Ps. 36. SUN.—Lk. 16, 19-31.

Sunday Services.

10.30 A. M.—Morning Prayer Meeting. Every Sunday Morning.

11 A. M.—Public Worship, with sermon by the Pastor.

Hymns—501, 368, 559.

2.45 P. M.—S. School Lesson—"The Unjust Steward." Luke 16 : 1-13.
The Pastor teaches the Men's Class. All men are invited.

2.45 P. M.—Sunday School at Bloomfield St. Mission

7 P. M.—Prayer and Praise Service at Bloomfield St. Mission.

7 P. M.—Public Worship, with Sermon by the Pastor.

Hymns—365, 326, 484.

LORD'S SUPPER at close of Evening Service.

CONVENTION OFFERING next Sunday.

Meetings for the Week.

MONDAY EV'G., 8—B. Y. P. U Service. "Are you doing your best?"
Matt. 25 : 14-30. Culture Class 8.45—9.30. Lesson III. All
invited. Leader, John A. Thompson.

TUESDAY, 3 30 P. M.—W. M. A. S. Meeting in Church Parlor.

TUESDAY, 4 P. M.—District Meeting at Committee Room G. A. McDonald

TUESDAY, 8 P. M.—Monthly Business Meeting of Church.

TUESDAY, 8 P. M.—Sewing Circle.

WEDNESDAY, 8 P. M.—Missionary Prayer and Praise Service. Offering
for Missions.

TUESDAY and THURSDAY, 8 P. M.—EVANGELISTIC SERVICES AT BLOOM-
FIELD ST. MISSION.

Strangers and new comers feel at home with us.

What Concerns You.

The number of "Sacred Songs and Solos" in our vestry has been very much reduced, and we have not enough left for our Sunday School and Social Services. Many of these have in some manner found their way into our homes. Without any exceptions let us bring them back at once. They belong to the church and are greatly needed there.

The Culture Class has begun work. The lessons this winter are on "the Life and Teachings of Jesus." It is a most helpful course. To make the most of the lessons you ought to have "The Baptist Union." It can be secured for 50 cents for the period covering the Christian Culture Courses. Give your name to the President of the B. Y. P. U. If you have not secured the paper you are welcome to the class. It is open to all. The Christian Culture Courses are intended to build up our people in Bible and Christian knowledge. Are you taking advantage of this opportunity? The class meets every Monday Evening.

It is a most Hopeful Sign for our church that the Sunday School lesson is to be studied from 15 to 30 minutes at the close of Wednesday evening prayer service. Teachers in the Sunday School are thus prepared for the coming Sunday's classes. Adult members of the Church and Congregation have opportunity to talk over in an informal way the teachings of Scripture. Busy people can spare 30 minutes to build themselves up in the faith. The great weakness of professing Christians to-day is lack of knowledge of the Bible. Here is a splendid opportunity to learn. Come next Wednesday evening.

Married. Bentley-McDonald. At 13 Maynard St., Oct. 31st, by the Pastor, Charles Ashel Bentley, of Berwick, and Edith Bliss McDonald. We are sorry to lose Miss McDonald, who was one of our most faithful workers. Our loss will be the gain of the Berwick Church. We offer best wishes to the happy couple.

Applications for Seats should be made to Deacon J. S. McPherson. The seats are assigned, not rented. Each holder of a sitting is expected to be a contributor.

THIS CHURCH IS SUPPORTED by the voluntary contributions of the people that is to say, every member of this church is covenanted voluntarily to subscribe towards the expenses of the church whatever sum it is in their power to give, and shall so inform the Financial Secretary, and from him receive envelopes for that purpose. All bills or accounts are to be sent to A. E. Soule, 119 Robie St. All monies contributed, donated or raised by and for the church, are to be handed to N. L. McDonald, Fin. Sec'y.

CONVENTION FUND offering the second Sunday of each month. W. M. A. S. OFFERING the third Sunday of each quarter beginning with August.

Families having cases of sickness or distress will please send word at once to the Pastor, or one of the Deacons. You are urged to use the information cards in pews. If you are not a regular member of some other city congregation, you are cordially invited to come with us and find a permanent home.

"Seek ye first the Kingdom of God."—Matt. 6: 33.

Organization.

Pastor—Z. L. FASH.

Deacons—J. C. DUMARESQ, JAS. ROSS, W. T. HARRIS,
W. W. PICKINGS, JAS. MCPHERSON, JOHN BENTLEY.

Clerk—GEO. A. McDONALD,

Assistant Clerk—F. GAETZ,

Treasurer—W. T. HARRIS.

Trustees—W. T. HARRIS, GEO. A. McDONALD, W. W. PICKINGS, GEO.
FIELDING, W. H. HAMILTON.

Chorister—W. T. HARRIS.

Organist—MRS. GEO. BURGOYNE

Chairmen of Standing Committees.

Finance—A. E. Soulis.

Taking Sunday Offerings—J. C. Dumaresq.

Ushers—N. B. Smith.

Pew—J. McPherson.

District Committee—Geo. A. McDonald.

Bloomfield Street Mission—J. A. Thompson.

Visiting and Sick—Mrs. Z. L. Fash.

Convention Fund—W J Gates.

Organ Fund—C. T. Burns.

Mortgage Fund—A. E. Soulis.

Communion Fund—J. C. Dumaresq.

Social—Jas McPherson.

Auditor—C. R. Hoben.

Auxiliary Organizations.

Sabbath School—Superintendent, A. C. LAYTON.

Primary Dept. Superintendent, Geo. A. McDonald.

Home Dept. Superintendent, C. R. Hoben.

Mission Band Committee—Chairman, Minnie Hubley.

White Ribbon Band—Superintendent, W. J. Gates.

Women's Missionary Aid Society—Mrs. Jas. McPherson, President.

Sewing Circle—President, Mrs. J. C. Dumaresq.

Baptist Young People's Union—S. P. Dumaresq, President

Junior B. Y. P. U.—Supt., G. A. McDonald. Pres., Clinton Proctor.

Sexton—J. Adams, 55 Brunswick Street.