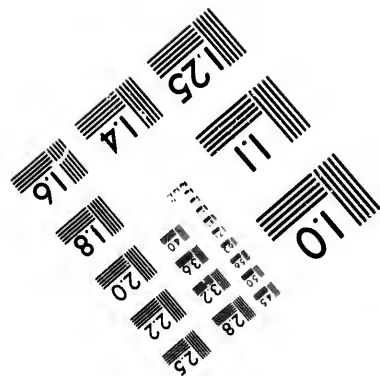
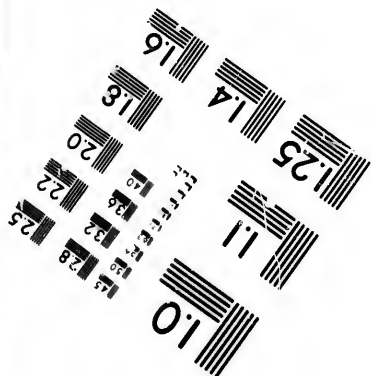
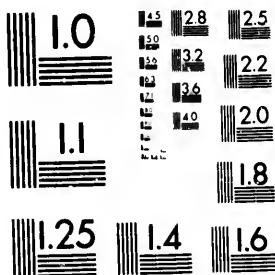


# IMAGE EVALUATION TEST TARGET (MT-3)



**CIHM/ICMH  
Microfiche  
Series.**

**CIHM/ICMH  
Collection de  
microfiches.**



**Canadian Institute for Historical Microreproductions**

**Institut canadien de microreproductions historiques**

**1980**

## Technical Notes / Notes techniques

The Institute has attempted to obtain the best original copy available for filming. Physical features of this copy which may alter any of the images in the reproduction are checked below.

L'Institut a microfilmé le meilleur exemplaire qu'il lui a été possible de se procurer. Certains défauts susceptibles de nuire à la qualité de la reproduction sont notés ci-dessous.

- ☐ Coloured covers/  
Couvertures de couleur
- ☐ Coloured maps/  
Cartes géographiques en couleur
- ☐ Pages discoloured, stained or foxed/  
Pages décolorées, tachetées ou piquées
- ☐ Tight binding (may cause shadows or  
distortion along interior margin)/  
Reliure serrée (peut causer de l'ombre ou  
de la distortion le long de la marge  
intérieure)
- ☐ Additional comments/  
Commentaires supplémentaires

- ☐ Coloured pages/  
Pages de couleur
- ☐ Coloured plates/  
Planches en couleur
- ☒ Show through/  
Transparence
- ☐ Pages damaged/  
Pages endommagées

---

## Bibliographic Notes / Notes bibliographiques

- ☐ Only edition available/  
Seule édition disponible
- ☐ Bound with other material/  
Relié avec d'autres documents
- ☐ Cover title missing/  
Le titre de couverture manque
- ☐ Plates missing/  
Des planches manquent
- ☐ Additional comments/  
Commentaires supplémentaires
- ☐ Pagination incorrect/  
Erreurs de pagination
- ☐ Pages missing/  
Des pages manquent
- ☐ Maps missing/  
Des cartes géographiques manquent

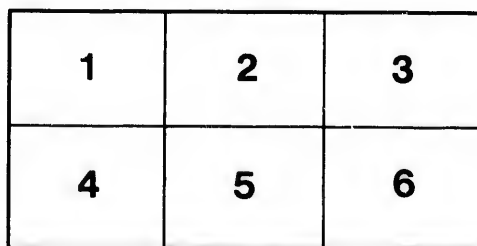
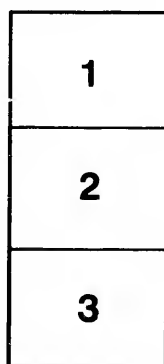
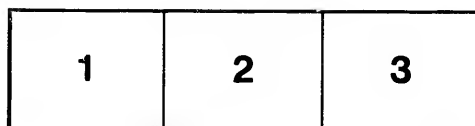
The images appearing here are the best quality possible considering the condition and legibility of the original copy and in keeping with the filming contract specifications.

The last recorded frame on each microfiche shall contain the symbol → (meaning "CONTINUED"), or the symbol ▼ (meaning "END"), whichever applies.

The original copy was borrowed from, and filmed with, the kind consent of the following institution:

National Library of Canada

Maps or plates too large to be entirely included in one exposure are filmed beginning in the upper left hand corner, left to right and top to bottom, as many frames as required. The following diagrams illustrate the method:



Les images suivantes ont été reproduites avec le plus grand soin, compte tenu de la condition et de la netteté de l'exemplaire filmé, et en conformité avec les conditions du contrat de filmage.

Un des symboles suivants apparaîtra sur la dernière image de chaque microfiche, selon le cas: le symbole → signifie "A SUIVRE", le symbole ▼ signifie "FIN".

L'exemplaire filmé fut reproduit grâce à la générosité de l'établissement prêteur suivant :

Bibliothèque nationale du Canada

Les cartes ou les planches trop grandes pour être reproduites en un seul cliché sont filmées à partir de l'angle supérieure gauche, de gauche à droite et de haut en bas, en prenant le nombre d'images nécessaire. Le diagramme suivant illustre la méthode :



*(From the Canadian Naturalist, 1870)*

ON  
FORAMINIFERA

FROM THE  
GULF AND RIVER ST. LAWRENCE.

By G. M. DAWSON.

By way of introduction to these notes, I may state that the reader will find some account of the curious and interesting animals to which the paper relates, with figures of characteristic examples, in Vol. IV, new series, of this Journal, page 413; and that several species found in the Gulf of St. Lawrence have been catalogued by Principal Dawson, in the same Journal, Vol. V, page 188 *et seq.* The following tables give, however, the only approach to a complete view of the species and their distribution hitherto attempted.

Many of the deeper samples were small quantities of mud brought up in sounding, by Capt. Orlebar, R.N., of the Coast Survey, and by him kindly presented to Dr. Dawson.

The specimens from Labrador were obtained from material dredged by the officers of the Geological Survey; those from Prince Edward Island, were from a specimen secured by C. Robb, Esq.; and those from the Bank of Newfoundland, were obtained from the late Sheriff Dickson, of Kingston.

The somewhat extensive series from Gaspé Bay was obtained during a dredging expedition in the summer of 1869. The mud was sampled when brought up by the dredge, and reserved for examination, the depth being ascertained as carefully as possible. Several very rich and interesting samples are also from the dredgings of Mr. J. F. Whiteaves, F.G.S., in Gaspé and its vicinity. Mr. Whiteaves has also gone over this material with care, and has detected some additional species.

The means were unfortunately not at hand for ascertaining the temperature at the bottom. But, though there is reason to

believe that the water at Gaspé Bay is somewhat warmer than the Gulf of St. Lawrence in general, the mud as it came over the boat's side felt icy cold to the hand, showing even here what a great effect the iceberg-laden Arctic current has on the bottom temperature. The number of species tabulated must not in every instance be taken as a criterion of the relative richness of the localities, as much often depends on the amount of material at disposal. This is especially the case when comparing dredgings with soundings.

The general aspect of the Gulf of St. Lawrence Foraminifera is northern, and in many places closely resembles the fauna of the Greenland coast and the Hunde Islands, as given in Parker & Jones' Memoir.\* The Gulf, at least so far as its Foraminifera are concerned, evidently belongs to the Arctic province, the limits of which skirt the Banks of Newfoundland and pass from thence southward to Cape Breton.

The refrigeration of its waters depends on the Arctic current, which, entering the Straits of Belle Isle, floods the whole bottom of the Gulf with water almost at the temperature of the Arctic seas. To these conditions the series of collections from Gaspé offers somewhat an exception, and is of a slightly more southern character, both as regards the species represented and the development which they attain. This difference depends on purely local causes, which, while slightly changing the character, give opportunities for a very abundant development of Foraminifera, more especially of the arenaceous forms. Gaspé Bay in no part exceeds 50 fathoms in depth; is about 20 miles in extreme length, well land-locked, and disturbed by no other current than that caused by the ebb and flow of the tide. The depth is not so great as to allow of the incursion of the cold and deep layer to any great extent, and the proximity of land and the shelter thus afforded tend still further to modify its temperature.

The bottom, in most of the deeper parts, is composed of fine sand and mud, and this it is which favors the very large development of arenaceous forms.

Past the mouth of Gaspé Bay sweeps the very strong tidal current of the St. Lawrence, and immediately we pass the shelter of Ship Head and come within its influence, the changes in the Foraminifera become strikingly apparent. The bottom consisting

---

\* Philosophical Transactions, 1865.

for the most part of clean gravel or coarse sand, most of the arenaceous forms disappear at once, and instead of the abundance of *Nonioninas* and *Miliclas* previously found, a very large proportion consist of *Planorbulina lobatula*, which can hold its own, attached to seaweeds and polyzoons. *Polystomella Arctica* also becomes somewhat prominent, while the *Lagenidæ* and *Entosolenidæ* appear in abundance.

What few sandy forms do occur are depauperated and composed of very coarse particles. The Foraminifera as a whole however are very abundant, and in some samples dredged by Mr. Whiteaves almost equal in quantity those in the deeper Atlantic soundings.

In the estuary of the St. Lawrence itself, *Bulimina pyrula* becomes a somewhat common form. Among forms which in the Gulf of St. Lawrence may be mentioned as specially characteristic of deep water, are *Nodosaria (Glandulina) levigata*, *Globigerina bulloides*, very small; *Bulimina*, principally *B. squamosa*, also small; *Uvigerina pygmaea*, *Cassidulina*.

From depths greater than 100 fathoms all the Foraminifera are very small and delicate; and *Lagenidæ*, *Buliminidæ*, *Globigerina bulloides*, together with a few depauperated *Nonioninæ*, constitute the greater part of the fauna. From these depths also come many Diatoms, mostly *Coscinodiscus*, and Sponge spicules. *Polystomella striatopunctata* is almost everywhere prevalent, though it nowhere attains to any very great size, and below about 30 fathoms, becomes small and generally rare, and continues increasing in rarity till it almost disappears at 300 fathoms. In some localities, at about 30 fathoms, *P. Arctica* is abundant, and greatly surpasses in size the ordinary *Polystomellæ* occurring along with it. The remaining *P. striatopunctatæ* also at this depth often show a remarkable proneness to run into modifications resembling one or other of the numerous species and varieties into which the genus is subdivided, but as the transition series are complete, it is very difficult to place the bulk of the specimens satisfactorily under them. It has been thought better in the table to include as many as are easily seen to be modified *striatopunctatæ* under that name. *Nonionina Labradorica*, though not so universally distributed as the above, is a very characteristic species in the Gulf. It seems to be best developed and in largest numbers at about 30 fathoms. It thins off both in numbers and size as we go into shallower water, and decreases much in size, though not



so perceptibly in numbers as the water deepens to 100 fathoms and below. There is a remarkable absence of *Miliolas* in the estuarine parts of the Gulf, which strongly contrasts with their abundance in Gaspé Bay, and also on the Atlantic coast of Nova Scotia, and south.

One specimen of a curious sandy form of *Cornu-spira foliacea* was obtained at a depth of 18 fathoms at Gaspé.

*Biloculina ringens* scarcely occurs above 30 fathoms.

At Murray Bay, which is only about 60 miles below the point where, at least, the surface of the St. Lawrence becomes permanently fresh, the Foraminifera become very scarce and poor. *Polystomella striatopunctata* is the most common, but it has become very small. *Nonionina Labradorica*, *Lituola Canariensis*, and *Trochammina inflata* also occur, but all much reduced in size, and scarce relatively to the amount of material examined. On passing from the Gulf to the east of Newfoundland, or to the south of Cape Breton, a change from the Gulf Fauna is immediately detected. *Polystomella striatopunctata*, there so common, becomes rare. *Nonionina Labradorica* to a great extent ceases to appear, and *Uvigerina pygmaea* and *Cassidulinidae* become more frequent.

The arenaceous *Hippocrepina*, (Fig. 2,)\* and *Lituola* (Figs. 1 and 3) are most plentiful at depths less than 20 fathoms. *Lituola scorpiurus* (Fig. 4) goes down to the greatest depths in Gaspé Bay, and is yet abundant at 10 fathoms, while the immense *Rhabdopleura abyssorum* (Fig. 6) only appears at about 20 fathoms, and continues from that point increasing in numbers and size to the depth of 50 fathoms, which is the greatest depth in Gaspé Bay, where alone it has been found.

The distribution of these Foraminifera would tend, with other facts, to show that these organisms, together with most other marine animals of low organization, do not depend, to any great extent, on the depth or intensity of daylight, but almost entirely on the *temperature* of the water, as Dr. Carpenter maintains in his account of his recent deep-sea dredging, so that they would not give very satisfactory evidence of the conditions of deposit of Post-Pliocene or other beds, unless other facts were at disposal to show the depth, when the Foraminifera would give valuable assistance with regard to the climatic conditions at that depth.

---

\* The figures refer to the numbers of the wood-cuts.



TABLE II.—*Showing the Distribution of Twenty-three Gatherings of Foraminifera, from the Gulf and River St. Lawrence, and neighbouring parts of the Atlantic.*

	(c) common.	(a) rare.	(s) small specimens.	(L) large specimens.
	113 Fathoms, Gulf St. Law.	250 Fathoms between St. Pierre and Sechart.	200 Fathoms, Cape Camille.	144 Fathoms, North-east of Anticosti.
			140 Fathoms, Gulf St. Lawrence.	40 Fathoms, Cape St. Nicholas.
				Labrador.
				Banks of Newfoundland.
				Off West Cape, Prince Edward Island.
				Off South Coast, Cape Breton, 90 Fathoms.
				Caspé, North-west Arm, 7 Fathoms.
				Caspé Bay, 10 to 15 Fathoms.
				Caspé Bay, 10 Fathoms.
				Caspé Bay, 10 to 17 Fathoms.
				Caspé Bay, 18 to 20 Fathoms.
				Caspé, bet. Ship Head and Cape Bon Ami, 30 Fathoms.
				Caspé Bay, off Grande Grève, 35 Fathoms.
				Caspé, off Ship Head, 30 to 40 Fathoms.
				Caspé Bay, off Grande Grève, 40 to 50 Fathoms.
				Caspé Bay, Grande Grève, St. George's Cove.
				Gaspe, River St. Lawrence, off Cape Rosier Village.
				Riv. St. Lawrence, Murray Bay, 15 to 20 Fathoms.
<i>Nodosaria (Glandulina) levigata</i> .....	•			
<i>Dentalina pauperata</i> .....	•			
<i>communis</i> .....	•			
<i>Lagena sulcata</i> .....	•			
— var. <i>distoma</i> .....	•			
— var. <i>laevistriata</i> .....	•			
— var. <i>laevigata</i> .....	•			
— var. <i>substriata</i> .....	•			
<i>Entosolenia globosa</i> .....	•			
— <i>costata</i> .....	•			
— <i>melio, D'Orb.</i> .....	•			
— <i>caudata, D'Orb.</i> .....	•			
— <i>marginata, var. ornata</i> .....	•			
— <i>marginata</i> .....	•			
— <i>squamosa</i> .....	•			
— <i>striato-punctata</i> .....	•			
<i>Polymorphina laeta</i> .....	•			
— var. <i>compressa</i> .....	•			
<i>Uvigerina pyramis</i> .....	•			
<i>Globigerina bulloides</i> .....	•			

[illegible]

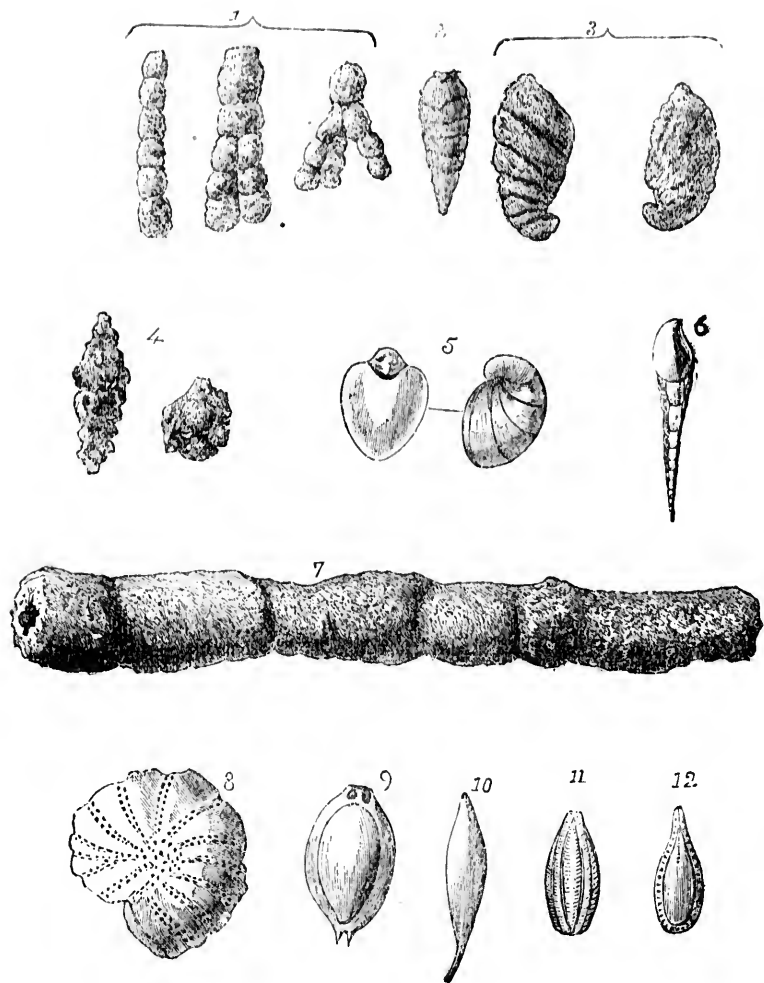


Fig. 1. *Lituola findens*, P. Fig. 2. *Hippocrepina indivisa*, P. Fig. 3. *Lituola cassis*, P. Fig. 4. *Lituola scorpiurus*. Fig. 5. *Nonionina scapha*, var. *Labradorica* (313 fms.) Fig. 6. *Balimina Presli*, var. *squamosa* (313 fms.) Fig. 7. *Rhabdopleura*? Fig. 8. *Polystomella Arctica*. Fig. 9. *Biloenlina ringens*. Fig. 10. *Lagena sulcata*, var. Fig. 11. *Entosolenia striato-punctata*. Fig. 12. *Entosolenia marginata*. Figs. 1, 2, 3, 4 and 7 are drawn to a scale half that of the other figures.

