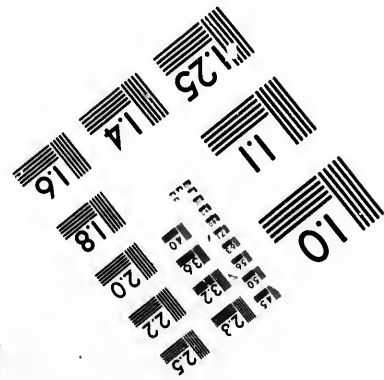
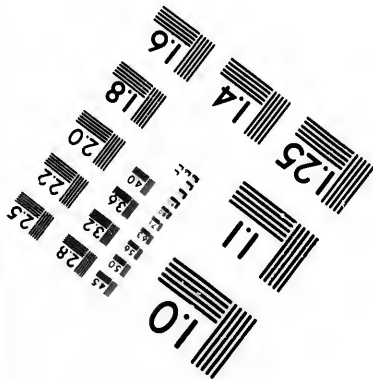
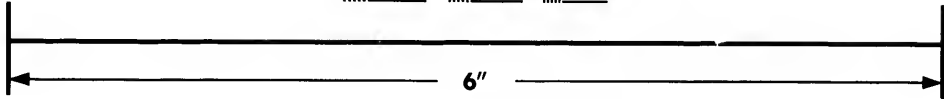
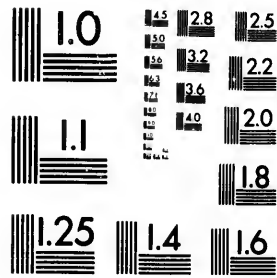


**IMAGE EVALUATION
TEST TARGET (MT-3)**



**Photographic
Sciences
Corporation**

23 WEST MAIN STREET
WELSTER, N.Y. 14580
(716) 872-4503

**CIHM/ICMH
Microfiche
Series.**

**CIHM/ICMH
Collection de
microfiches.**



Canadian Institute for Historical Microreproductions / Institut canadien de microreproductions historiques

© 1981

Technical and Bibliographic Notes/Notes techniques et bibliographiques

The Institute has attempted to obtain the best original copy available for filming. Features of this copy which may be bibliographically unique, which may alter any of the images in the reproduction, or which may significantly change the usual method of filming, are checked below.

L'Institut a microfilmé le meilleur exemplaire qu'il lui a été possible de se procurer. Les détails de cet exemplaire qui sont peut-être uniques du point de vue bibliographique, qui peuvent modifier une image reproduite, ou qui peuvent exiger une modification dans la méthode normale de filmage sont indiqués ci-dessous.

- | | |
|--|--|
| <input checked="" type="checkbox"/> Coloured covers/
Couverture de couleur | <input type="checkbox"/> Coloured pages/
Pages de couleur |
| <input type="checkbox"/> Covers damaged/
Couverture endommagée | <input type="checkbox"/> Pages damaged/
Pages endommagées |
| <input type="checkbox"/> Covers restored and/or laminated/
Couverture restaurée et/ou pelliculée | <input type="checkbox"/> Pages restored and/or laminated/
Pages restaurées et/ou pelliculées |
| <input type="checkbox"/> Cover title missing/
Le titre de couverture manque | <input checked="" type="checkbox"/> Pages discoloured, stained or foxed/
Pages décolorées, tachetées ou piquées |
| <input type="checkbox"/> Coloured maps/
Cartes géographiques en couleur | <input type="checkbox"/> Pages detached/
Pages détachées |
| <input type="checkbox"/> Coloured ink (i.e. other than blue or black)/
Encre de couleur (i.e. autre que bleue ou noire) | <input checked="" type="checkbox"/> Showthrough/
Transparence |
| <input type="checkbox"/> Coloured plates and/or illustrations/
Planches et/ou illustrations en couleur | <input type="checkbox"/> Quality of print varies/
Qualité inégale de l'impression |
| <input type="checkbox"/> Bound with other material/
Relié avec d'autres documents | <input type="checkbox"/> Includes supplementary material/
Comprend du matériel supplémentaire |
| <input type="checkbox"/> Tight binding may cause shadows or distortion
along interior margin/
La reliure serrée peut causer de l'ombre ou de la
distortion le long de la marge intérieure | <input type="checkbox"/> Only edition available/
Seule édition disponible |
| <input type="checkbox"/> Blank leaves added during restoration may
appear within the text. Whenever possible, these
have been omitted from filming/
Il se peut que certaines pages blanches ajoutées
lors d'une restauration apparaissent dans le texte,
mais, lorsque cela était possible, ces pages n'ont
pas été filmées. | <input type="checkbox"/> Pages wholly or partially obscured by errata
slips, tissues, etc., have been refilmed to
ensure the best possible image/
Les pages totalement ou partiellement
obscurcies par un feuillet d'errata, une pelure,
etc., ont été filmées à nouveau de façon à
obtenir la meilleure image possible. |
| <input type="checkbox"/> Additional comments:/
Commentaires supplémentaires: | |

This item is filmed at the reduction ratio checked below/
Ce document est filmé au taux de réduction indiqué ci-dessous.

10X	12X	14X	16X	18X	20X	22X	24X	26X	28X	30X	32X
					✓						

The copy filmed here has been reproduced thanks to the generosity of:

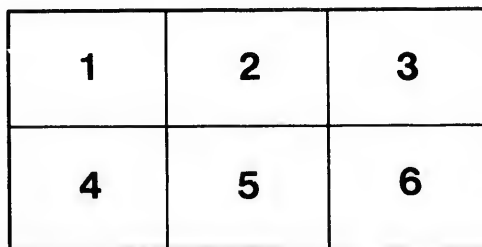
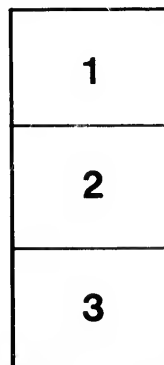
National Library of Canada

The images appearing here are the best quality possible considering the condition and legibility of the original copy and in keeping with the filming contract specifications.

Original copies in printed paper covers are filmed beginning with the front cover and ending on the last page with a printed or illustrated impression, or the back cover when appropriate. All other original copies are filmed beginning on the first page with a printed or illustrated impression, and ending on the last page with a printed or illustrated impression.

The last recorded frame on each microfiche shall contain the symbol \rightarrow (meaning "CONTINUED"), or the symbol ∇ (meaning "END"), whichever applies.

Maps, plates, charts, etc., may be filmed at different reduction ratios. Those too large to be entirely included in one exposure are filmed beginning in the upper left hand corner, left to right and top to bottom, as many frames as required. The following diagrams illustrate the method:



L'exemplaire filmé fut reproduit grâce à la générosité de:

Bibliothèque nationale du Canada

Les images suivantes ont été reproduites avec le plus grand soin, compte tenu de la condition et de la netteté de l'exemplaire filmé, et en conformité avec les conditions du contrat de filmage.

Les exemplaires originaux dont la couverture en papier est imprimée sont filmés en commençant par le premier plat et en terminant soit par la dernière page qui comporte une empreinte d'impression ou d'illustration, soit par le second plat, selon le cas. Tous les autres exemplaires originaux sont filmés en commençant par la première page qui comporte une empreinte d'impression ou d'illustration et en terminant par la dernière page qui comporte une telle empreinte.

Un des symboles suivants apparaîtra sur la dernière image de chaque microfiche, selon le cas: le symbole \rightarrow signifie "A SUIVRE", le symbole ∇ signifie "FIN".

Les cartes, planches, tableaux, etc., peuvent être filmés à des taux de réduction différents. Lorsque le document est trop grand pour être reproduit en un seul cliché, il est filmé à partir de l'angle supérieur gauche, de gauche à droite, et de haut en bas, en prenant le nombre d'images nécessaire. Les diagrammes suivants illustrent la méthode.

Copy Deposited No. 6349

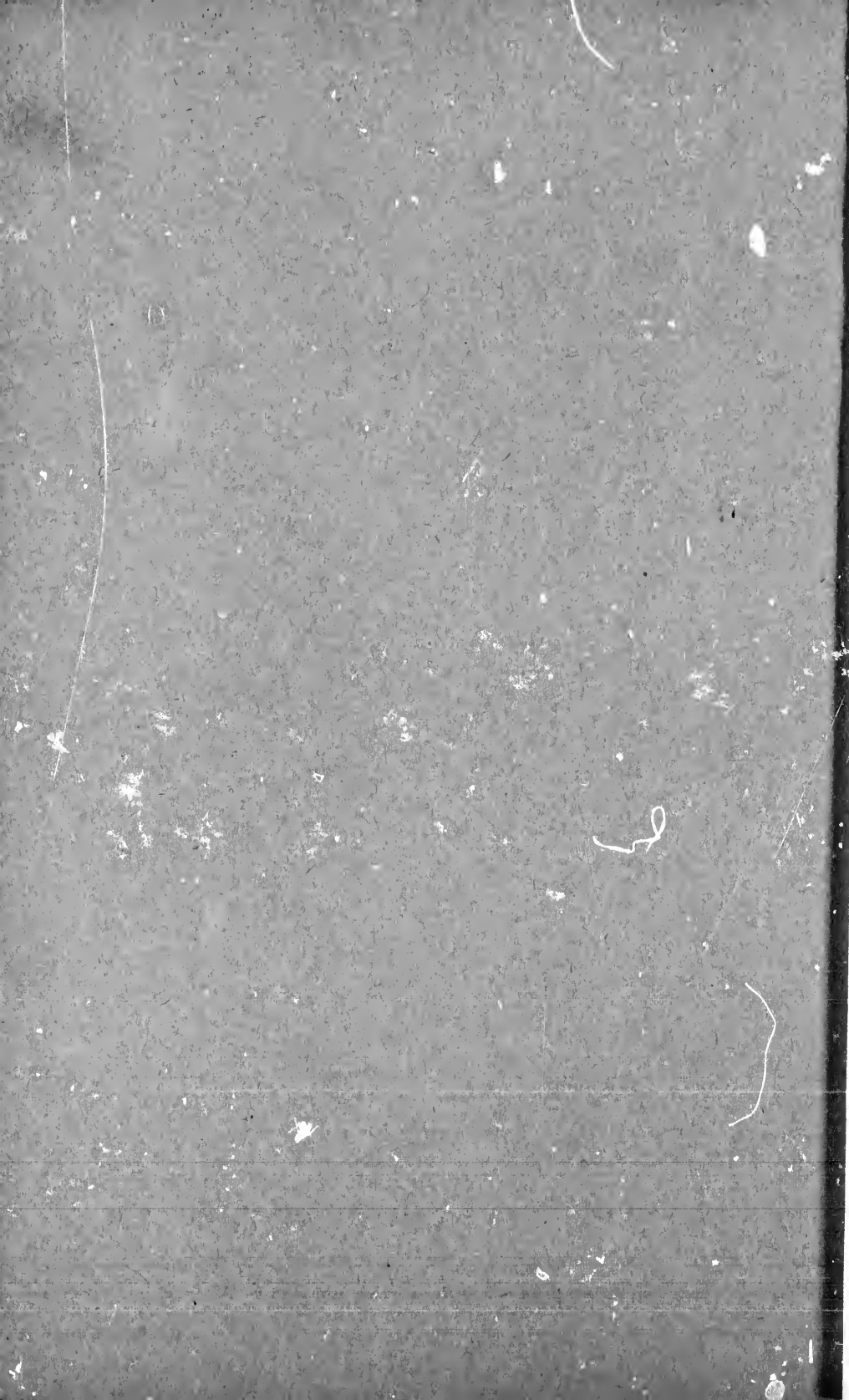
Peter Brown, Peter

7

COMPLIMENTS OF
PETER BROWN, L. D. S.

A TREATISE
ON
CROWN AND BRIDGE WORK
OR THE ADJUSTMENT OF TEETH WITHOUT PLATES.

1892.



PREFACE.

Knowing that the crowning and bridging of teeth is but imperfectly understood by the public, and feeling that it is the duty of Dental Surgeons to keep their patients posted in all that is new, I have prepared this illustrated pamphlet to show what can be accomplished in this department.

PETER BROWN, SURGEON DENTIST,

56 Beaver Hall,

Montreal.

CROWN AND BRIDGE WORK.

Great progress has been made in conservative dentistry in the last ten years, and in no department has greater advancement been made than in the crowning and bridging of teeth.

A dentist who understands this important branch of Prosthetic Dentistry is enabled to save teeth and roots that a few years ago were extracted by thousands; he is also able by adjusting teeth to natural roots to save patients the annoyance and discomfort of wearing a plate, to say nothing of the irritation to which the sensitive tissues of the palate are subjected by the contact of nonconducting material like vulcanite. The successful practice of crown and bridge work demands the greatest skill, finest manipulation and best judgment; it also requires some originality in methods of construction and application, for many of the cases presented for treatment are most complicated. The adjustment of crowns or bridges to diseased roots cannot be too severely condemned, as also the construction of crowns or bridges without due consideration of the force and direction of mastication.

Many persons have an idea that the removal of a pulp (nerve) in the preparation of a tooth for a crown or bridge is attended with great pain. This is erroneous, for a pulp (nerve) can now be removed without any pain by the use of cocaine or ether spray. It may also be added that a pulpless (without nerve) tooth or root will remain as firmly attached to the alveolar wall as it would if the pulp (nerve) were intact, and a properly constructed crown or bridge, carefully adjusted, will give as good service as the natural teeth.

Fig. 1 shows a vertical section of a lower incisor and jawbone (15 diameters); 1, enamel; 2, dentine; C, is placed in space occupied by nerve (pulp); that is the canal that receives the pin of an artificial crown; 3, cementum; 4, Periosteum which supplies the root with nutrition and serves as a cushion to relieve force of mastication; 5, bone of lower jaw.

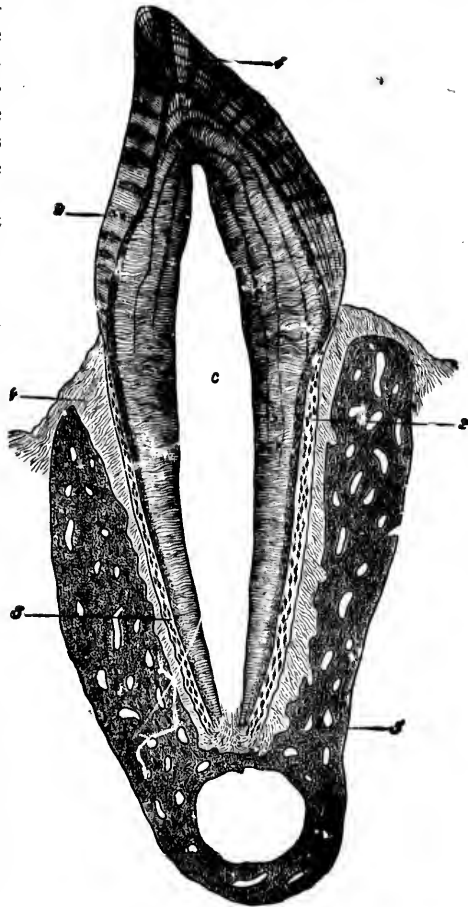


Fig. 1.



Fig. 2. Front and side view of crown with pin in place.



Fig. 3. Central root on left side of mouth prepared to receive the crown.



Fig. 4. Shows artificial crown in position.



Fig. 5 shows sections of root and artificial crown.



Fig. 6 shows section of lower molar and artificial crown.



Fig. 7. Lower molar with crown in place.



Fig. 8 shows section of a molar tooth of the upper jaw and artificial crown.

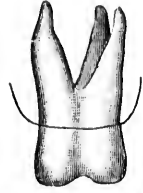


Fig. 9 shows same tooth and crown in place.



Fig. 11 shows artificial tooth ready to be adjusted to model, Fig. 10.

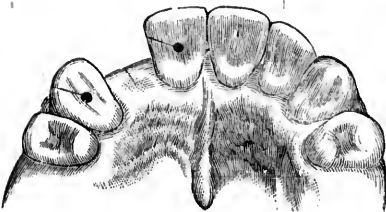


Fig. 10. Model showing the lateral tooth on right side of mouth missing.

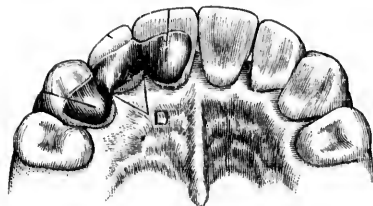


Fig. 12. Model showing the tooth in place.

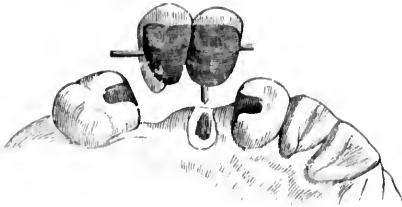


Fig. 13.

Fig. 13. Model showing two teeth on right side of mouth missing, but one root in place, and artificial bridge tooth ready to be adjusted.

Fig. 14. Model showing teeth in position.

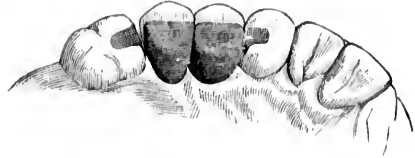


Fig. 14.

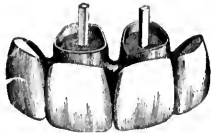


Fig. 16.

Fig. 16. Artificial bridge of four front teeth ready to be adjusted to model, Fig. 15.

Fig. 15. Model showing both lateral teeth missing but the two central roots in place.

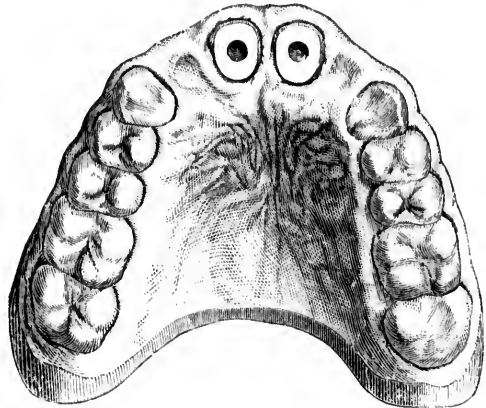


Fig. 15.

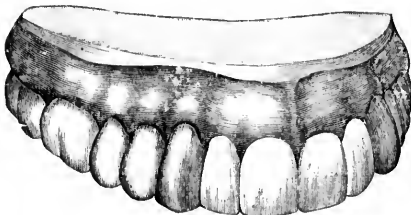


Fig. 17.

Fig. 17. showing model, Fig. 15, complete with four artificial teeth in position and held in place by being cemented to the two central roots.



Fig. 19.

Fig. 19 shows bridge piece of six teeth ready to be adjusted, to model, Fig. 18, the pins to be cemented into eye teeth roots.

Fig. 18. Model showing four front teeth missing but the eye teeth roots in place.

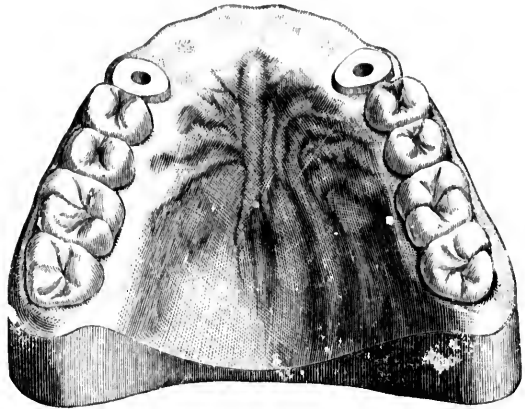


Fig. 18.

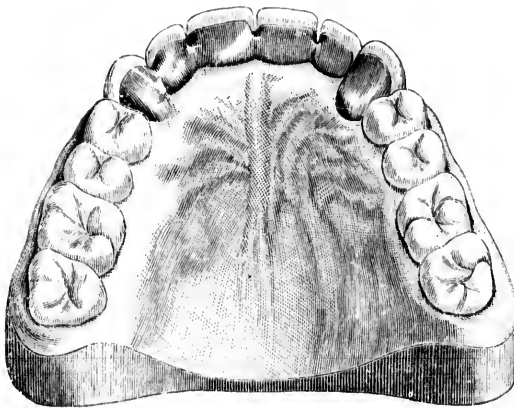


Fig. 20.

Fig. 20. Model showing inside view of model, Fig. 18, complete with artificial teeth in place and joined together with gold bar.

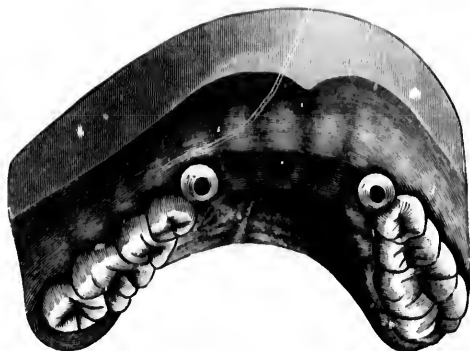


Fig. 21. Model showing four front teeth missing and eye teeth roots in place.



Fig. 22. Bridge piece of six front teeth to be cemented to eye teeth roots.

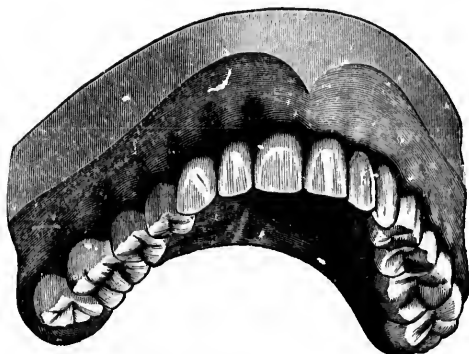


Fig. 23. Model showing case complete with bridge in place.

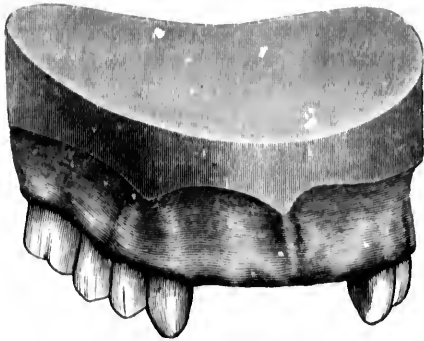


Fig. 24. Model of case that is very common, where the four front teeth are missing.

Fig. 24.



Fig. 25 shows bridge piece of four teeth and bands that encircle eye teeth.

Fig. 26 shows case complete with bridge in place.

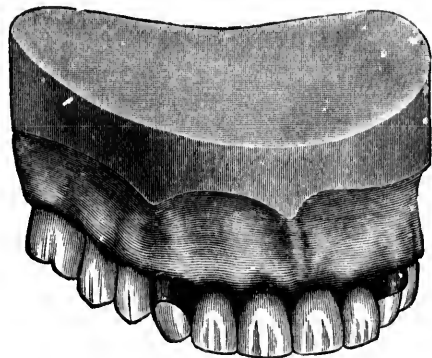


Fig. 26.



Fig. 27. Model showing both canine (eye) teeth and molar in jaw.



Fig. 29. Model showing Fig. 27 after the adjustment of the bridge.

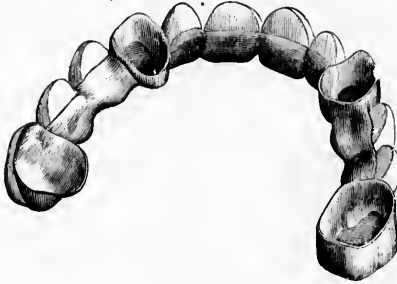


Fig. 28.

Fig. 28. A bridge of twelve teeth to be adjusted to model 27.

Fig. 30. Model showing case for a lower jaw with front teeth badly worn and two molars and a bicuspid absent on one side and a molar missing on left side.

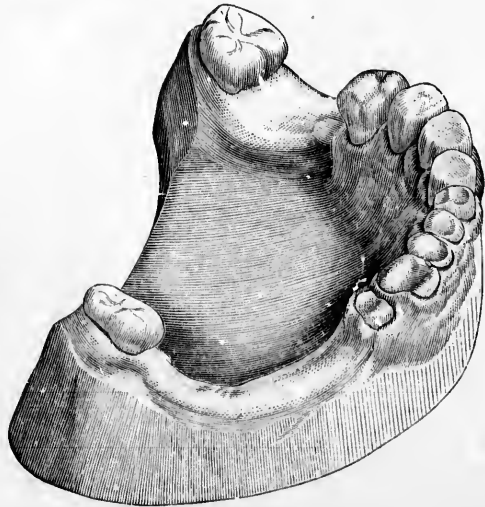


Fig. 30.

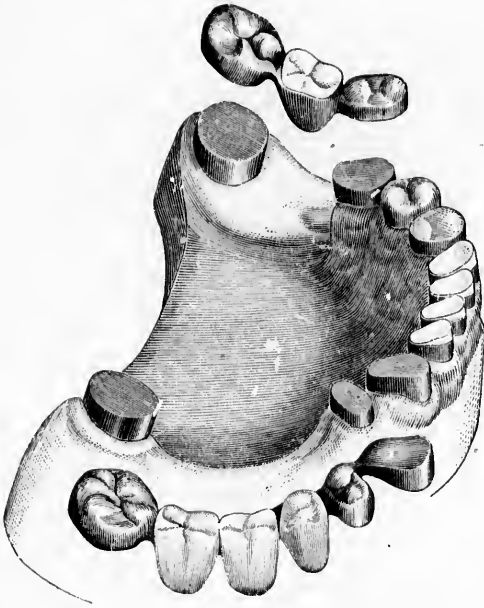


Fig. 31.

Fig. 31 shows model, Fig. 30, with front teeth capped and the bridge pieces ready to be adjusted.

Fig. 32 shows case with bridges in place.

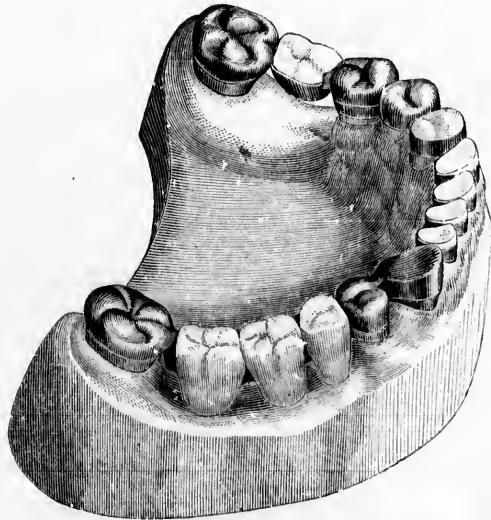


Fig. 32.

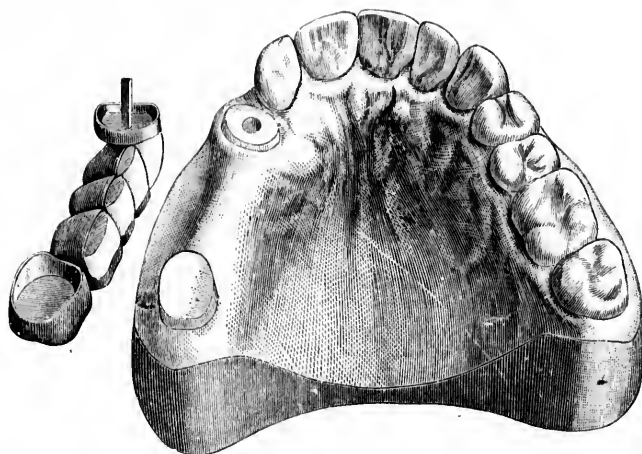


Fig. 33. Model showing two molar and one bicuspid missing and the root of first bicuspid in place, also the crown of last molar in position, bridge piece ready to be adjusted.

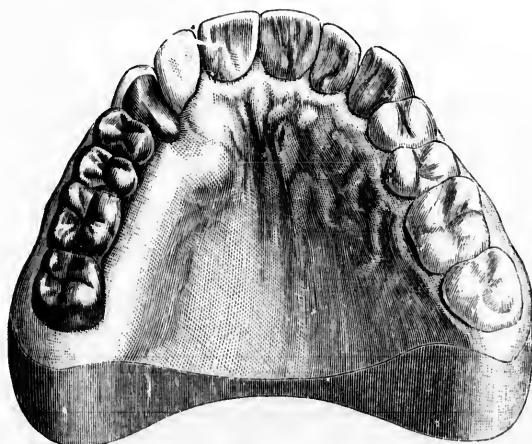


Fig. 34 shows case complete with bridge cemented in place.

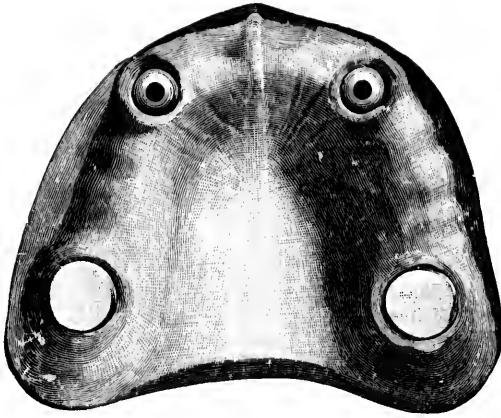


Fig. 35.

Fig. 35 shows model of upper jaw with both canine (eye) teeth roots in place as also the two last molars.

Fig. 36 shows a bridge piece including all of the teeth (a complete denture) ready to be adjusted.



Fig. 36.

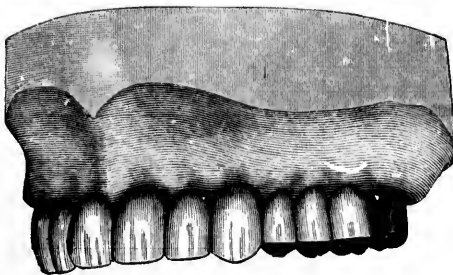
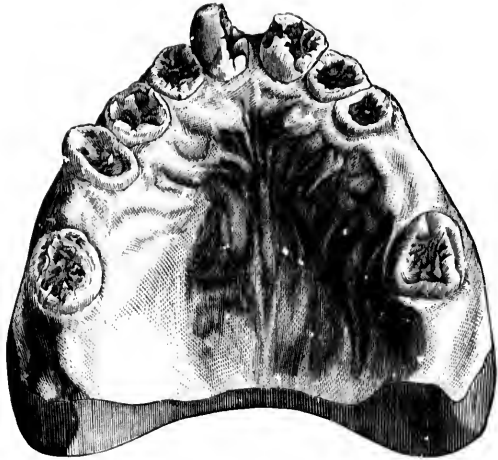


Fig. 37.

Fig. 37 shows case complete with bridge in position.



fi
r
Fig. 38 shows a case with nine teeth so badly decayed as to be impossible to save by filling.

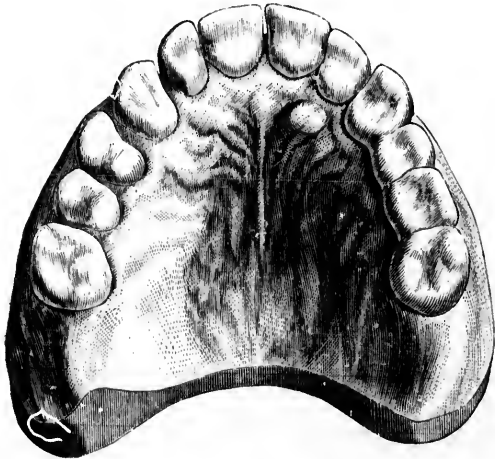


Fig. 39 shows case complete with crowns and bridges adjusted to the nine roots.

