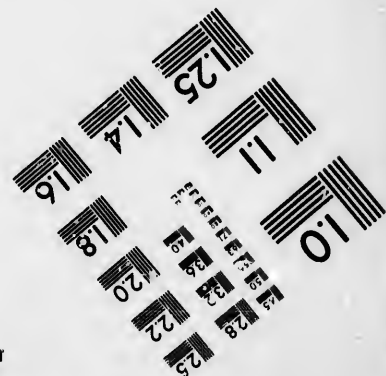
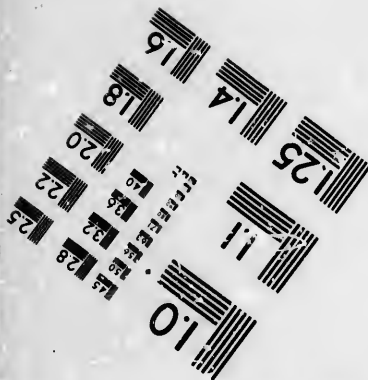
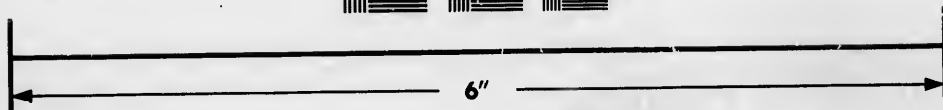
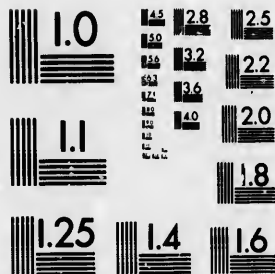


**IMAGE EVALUATION
TEST TARGET (MT-3)**



**Photographic
Sciences
Corporation**

25 WEST MAIN STREET
WEBSTER, N.Y. 14580
(716) 872-4 03

Can

**CIHM/ICMH
Microfiche
Series.**

**CIHM/ICMH
Collection de
microfiches.**



Canadian Institute for Historical Microreproductions / Institut canadien de microreproductions historiques

© 1985

Technical and Bibliographic Notes/Notes techniques et bibliographiques

The Institute has attempted to obtain the best original copy available for filming. Features of this copy which may be bibliographically unique, which may alter any of the images in the reproduction, or which may significantly change the usual method of filming, are checked below.

L'Institut a microfilmé le meilleur exemplaire qu'il lui a été possible de se procurer. Les détails de cet exemplaire qui sont peut-être uniques du point de vue bibliographique, qui peuvent modifier une image reproduite, ou qui peuvent exiger une modification dans la méthode normale de filmage sont indiqués ci-dessous.

- | | |
|--|--|
| <input type="checkbox"/> Coloured covers/
Couverture de couleur | <input checked="" type="checkbox"/> Coloured pages/
Pages de couleur |
| <input type="checkbox"/> Covers damaged/
Couverture endommagée | <input type="checkbox"/> Pages damaged/
Pages endommagées |
| <input type="checkbox"/> Covers restored and/or laminated/
Couverture restaurée et/ou pelliculée | <input type="checkbox"/> Pages restored and/or laminated/
Pages restaurées et/ou pelliculées |
| <input type="checkbox"/> Cover title missing/
Le titre de couverture manquant | <input checked="" type="checkbox"/> Pages discoloured, stained or foxed/
Pages décolorées, tachetées ou pliquées |
| <input type="checkbox"/> Coloured maps/
Cartes géographiques en couleur | <input type="checkbox"/> Pages detached/
Pages détachées |
| <input type="checkbox"/> Coloured ink (i.e. other than blue or black)/
Encre de couleur (i.e. autre que bleue ou noire) | <input checked="" type="checkbox"/> Showthrough/
Transparence |
| <input type="checkbox"/> Coloured plates and/or illustrations/
Planches et/ou illustrations en couleur | <input type="checkbox"/> Quality of print varies/
Qualité inégale de l'impression |
| <input type="checkbox"/> Bound with other material/
Relié avec d'autres documents | <input type="checkbox"/> Includes supplementary material/
Comprend du matériel supplémentaire |
| <input type="checkbox"/> Tight binding may cause shadows or distortion
along interior margin/
La reliure serrée peut causer de l'ombre ou de la
distorsion le long de la marge intérieure | <input type="checkbox"/> Only edition available/
Seule édition disponible |
| <input type="checkbox"/> Blank leaves added during restoration may
appear within the text. Whenever possible, these
have been omitted from filming/
Il se peut que certaines pages blanches ajoutées
lors d'une restauration apparaissent dans le texte,
mais, lorsque cela était possible, ces pages n'ont
pas été filmées. | <input type="checkbox"/> Pages wholly or partially obscured by errata
slips, tissues, etc., have been refilmed to
ensure the best possible image/
Les pages totalement ou partiellement
obscurcies par un feuillet d'errata, une pelure,
etc., ont été filmées à nouveau de façon à
obtenir la meilleure image possible. |
| <input checked="" type="checkbox"/> Additional comments: / [Printed ephemera] [2] p.
Commentaires supplémentaires: | |

This item is filmed at the reduction ratio checked below/
Ce document est filmé au taux de réduction indiqué ci-dessous.

10X	12X	14X	16X	18X	20X	22X	24X	26X	28X	30X	32X
				/							

The copy filmed here has been reproduced thanks to the generosity of:

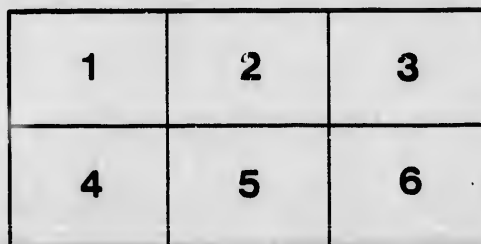
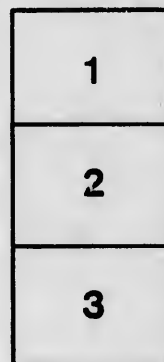
D. B. Weldon Library
University of Western Ontario
(Regional History Room)

The images appearing here are the best quality possible considering the condition and legibility of the original copy and in keeping with the filming contract specifications.

Original copies in printed paper covers are filmed beginning with the front cover and ending on the last page with a printed or illustrated impression, or the back cover when appropriate. All other original copies are filmed beginning on the first page with a printed or illustrated impression, and ending on the last page with a printed or illustrated impression.

The last recorded frame on each microfiche shall contain the symbol \rightarrow (meaning "CONTINUED"), or the symbol ∇ (meaning "END"), whichever applies.

Maps, plates, charts, etc., may be filmed at different reduction ratios. Those too large to be entirely included in one exposure are filmed beginning in the upper left hand corner, left to right and top to bottom, as many frames as required. The following diagrams illustrate the method:



L'exemplaire filmé fut reproduit grâce à la générosité de:

D. B. Weldon Library
University of Western Ontario
(Regional History Room)

Les images suivantes ont été reproduites avec le plus grand soin, compte tenu de la condition et de la netteté de l'exemplaire filmé, et en conformité avec les conditions du contrat de filmage.

Les exemplaires originaux dont la couverture en papier est imprimée sont filmés en commençant par le premier plat et en terminant soit par la dernière page qui comporte une empreinte d'impression ou d'illustration, soit par le second plat, selon la cas. Tous les autres exemplaires originaux sont filmés en commençant par la première page qui comporte une empreinte d'impression ou d'illustration et en terminant par la dernière page qui comporte une telle empreinte.

Un des symboles suivants apparaîtra sur la dernière image de chaque microfiche, selon le cas: le symbole \rightarrow signifie "A SUIVRE", le symbole ∇ signifie "FIN".

Les cartes, planches, tableaux, etc., peuvent être filmés à des taux de réduction différents. Lorsque le document est trop grand pour être reproduit en un seul cliché, il est filmé à partir de l'angle supérieur gauche, de gauche à droite, et de haut en bas, en prenant le nombre d'images nécessaires. Les diagrammes suivants illustrent la méthode.

Examiner Session
1861

W. C. CHEWETT & CO.,

(LATE MACLEAR & CO.)

Booksellers, Stationers, Printers,

LITHOGRAPHERS, BOOKBINDERS, &c.,

17 & 19 King Street East,

TORONTO.

DEAR SIR,

We beg to inform you that from this date the style of our firm will be changed from **MACLEAR & Co.** to **W. C. CHEWETT & Co.**

Our friends may be assured that this change of name will not involve any change either in our method of doing business, our attention to our customers, or the high character our goods have attained. The business is, and will continue to be managed by those who under the former firm succeeded in giving satisfaction to our very large body of customers.

The favours bestowed upon this House for the last **Twenty Years** demand corresponding exertions on our part, and it will be our constant endeavour to give increased vigour and efficiency to every branch of the establishment; we hope to be thus able to retain the confidence of all our old friends, and to be favoured with many new ones.

Accompanying this we send you a copy of our **Canadian Almanac** for 1862, to which you have contributed by a return of the Officers of your Municipality, for which please receive our thanks.

Annexed we beg to hand you a List of Municipal Blanks and Works adapted to Municipalities, any of which you may require we shall be pleased to send, and trust that whenever ordering you will remember

Yours respectfully,

W. C. CHEWETT & Co.

TORONTO, 15th November, 1861.

MUNICIPAL BLANKS.

PRINTED ACCORDING TO STATUTE ON FINE PAPER.

	Per quire.	Per 100.
Assessment Rolls, Towns & Townships, } Resident & Non-Resident.....	62½	62½
Assessment Notices, Towns & Townships. } do. do. Declarations.....	37½	62½
Collectors Rolls, Towns & Townships, } Resident & Non-Resident.....	62½	62½
Juror's List, four Divisions.....	62½	62½
Voter's Lists.....	62½	20 per doz.
Poll Book List.....	62½	20 do.
		10 each.
Notices of Appointment to Office.....		62½
Declaration of Qualification		62½
do. Office		62½
Tavern Keepers' Licenses		62½
do. do. Bonds		62½
Shop Keepers' Licenses.....		62½
Municipal Officers' Bond		20 per doz.
Hawkers' & Pedlers' Licenses. ...		20 do.
Directions to Assessors.....		10 each.

Orders on Treasurer, Minute Books, Receipt Books, &c., &c.

Writing Paper of all kinds, and every description of Stationery of the best manufacture, and at very reasonable rates.

Orders promptly attended to, and every attention given to ensure accuracy.

THE MUNICIPAL MANUAL,

EDITED BY ROBERT A HARRISON, ESQ., BARRISTER-AT-LAW.

PRICE, THREE DOLLARS.

CONSOLIDATED STATUTES of Canada - - \$3.75

“ “ of U. Canada, - 3.25

THE PROVINCIAL JUSTICE

PRICE, FIVE DOLLARS.

THE CONSTABLE'S GUIDE,

A SKETCH OF THE OFFICE OF CONSTABLE.

By A. WILSON, Esq., Q.C., late Mayor of Toronto.

“ Well adapted for the use of all Constables, Sheriffs, Bailiffs and other Peace Officers throughout the Province; and it will be found to be very useful to the Magistrate, and even to the Lawyer.”

PRICE, ONE DOLLAR.

THE MUNICIPAL READY RECKONER,

IN DOLLARS AND CENTS.

Giving Rates of the one hundredth part of a cent up to twenty-five cents, on any sum from one dollar, to one hundred thousand dollars; to which is added many useful tables.

PRICE, ONE DOLLAR.

For any of the above, address—

W. C. CHEWETT & CO.,

17 & 19 King Street East, Toronto.

