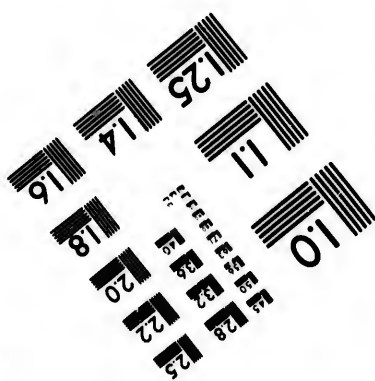
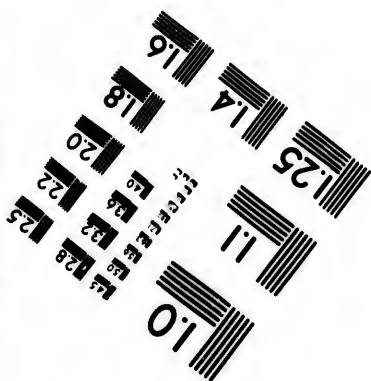
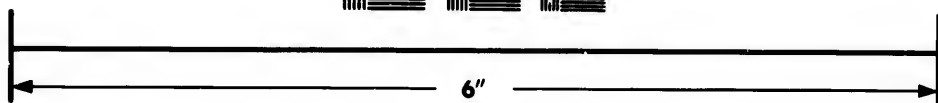
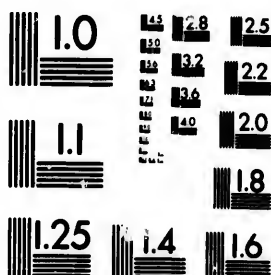


**IMAGE EVALUATION
TEST TARGET (MT-3)**



**Photographic
Sciences
Corporation**

23 WEST MAIN STREET
WEBSTER, N.Y. 14580
(716) 872-4503

18
20
22
25

**CIHM/ICMH
Microfiche
Series.**

**CIHM/ICMH
Collection de
microfiches.**



Canadian Institute for Historical Microreproductions / Institut canadien de microreproductions historiques

oi

© 1982

Technical and Bibliographic Notes/Notes techniques et bibliographiques

The Institute has attempted to obtain the best original copy available for filming. Features of this copy which may be bibliographically unique, which may alter any of the images in the reproduction, or which may significantly change the usual method of filming, are checked below.

L'Institut a microfilmé le meilleur exemplaire qu'il lui a été possible de se procurer. Les détails de cet exemplaire qui sont peut-être uniques du point de vue bibliographique, qui peuvent modifier une image reproduite, ou qui peuvent exiger une modification dans la méthode normale de filmage sont indiqués ci-dessous.

- Coloured covers/
Couverture de couleur
- Covers damaged/
Couverture endommagée
- Covers restored and/or laminated/
Couverture restaurée et/ou pelliculée
- Cover title missing/
Le titre de couverture manque
- Coloured maps/
Cartes géographiques en couleur
- Coloured ink (i.e. other than blue or black)/
Encre de couleur (i.e. autre que bleue ou noire)
- Coloured plates and/or illustrations/
Planches et/ou illustrations en couleur
- Bound with other material/
Relié avec d'autres documents
- Tight binding may cause shadows or distortion
along interior margin/
La reliure serrée peut causer de l'ombre ou de la
distortion le long de la marge intérieure
- Blank leaves added during restoration may
appear within the text. Whenever possible, these
have been omitted from filming/
Il se peut que certaines pages blanches ajoutées
lors d'une restauration apparaissent dans le texte,
mais, lorsque cela était possible, ces pages n'ont
pas été filmées.
- Additional comments:/
Commentaires supplémentaires:

- Coloured pages/
Pages de couleur
- Pages damaged/
Pages endommagées
- Pages restored and/or laminated/
Pages restaurées et/ou pelliculées
- Pages discoloured, stained or foxed/
Pages décolorées, tachetées ou piquées
- Pages detached/
Pages détachées
- Showthrough/
Transparence
- Quality of print varies/
Qualité inégale de l'impression
- Includes supplementary material/
Comprend du matériel supplémentaire
- Only edition available/
Seule édition disponible
- Pages wholly or partially obscured by errata
slips, tissues, etc., have been refilmed to
ensure the best possible image/
Les pages totalement ou partiellement
obscurcies par un feuillet d'errata, une pelure,
etc., ont été filmées à nouveau de façon à
obtenir la meilleure image possible.

This item is filmed at the reduction ratio checked below/
Ce document est filmé au taux de réduction indiqué ci-dessous.

10X	14X	18X	22X	26X	30X
<input type="checkbox"/>	<input type="checkbox"/>	<input checked="" type="checkbox"/>	<input type="checkbox"/>	<input type="checkbox"/>	<input type="checkbox"/>
12X	16X	20X	24X	28X	32X

The copy filmed here has been reproduced thanks to the generosity of:

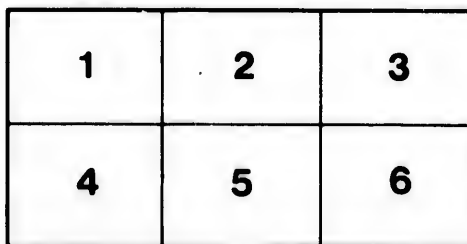
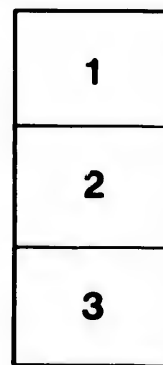
Library Division
Provincial Archives of British Columbia

The images appearing here are the best quality possible considering the condition and legibility of the original copy and in keeping with the filming contract specifications.

Original copies in printed paper covers are filmed beginning with the front cover and ending on the last page with a printed or illustrated impression, or the back cover when appropriate. All other original copies are filmed beginning on the first page with a printed or illustrated impression, and ending on the last page with a printed or illustrated impression.

The last recorded frame on each microfiche shall contain the symbol → (meaning "CONTINUED"), or the symbol ∇ (meaning "END"), whichever applies.

Maps, plates, charts, etc., may be filmed at different reduction ratios. Those too large to be entirely included in one exposure are filmed beginning in the upper left hand corner, left to right and top to bottom, as many frames as required. The following diagrams illustrate the method:



L'exemplaire filmé fut reproduit grâce à la générosité de:

Library Division
Provincial Archives of British Columbia

Les images suivantes ont été reproduites avec le plus grand soin, compte tenu de la condition et de la netteté de l'exemplaire filmé, et en conformité avec les conditions du contrat de filmage.

Les exemplaires originaux dont la couverture en papier est imprimée sont filmés en commençant par le premier plat et en terminant soit par la dernière page qui comporte une empreinte d'impression ou d'illustration, soit par le second plat, selon le cas. Tous les autres exemplaires originaux sont filmés en commençant par la première page qui comporte une empreinte d'impression ou d'illustration et en terminant par la dernière page qui comporte une telle empreinte.

Un des symboles suivants apparaîtra sur la dernière image de chaque microfiche, selon le cas: le symbole → signifie "A SUIVRE", le symbole ∇ signifie "FIN".

Les cartes, planches, tableaux, etc., peuvent être filmés à des taux de réduction différents. Lorsque le document est trop grand pour être reproduit en un seul cliché, il est filmé à partir de l'angle supérieur gauche, de gauche à droite, et de haut en bas, en prenant le nombre d'images nécessaire. Les diagrammes suivants illustrent la méthode.

OR

The F
when th

ORDER OF PROCEEDINGS

AT THE

Dedication

OF THE

New Masonic Hall,

Victoria, V. L.

MONDAY, 25TH JUNE, 1866.

The Brethren will assemble at the Old Lodge Room at 12:45 p. m. punctually, when the Provisional Lodge will be opened, composed as follows :

Bro. R. Burnaby W. Master of the Day ;
 I. W. Powell, P. Master of the Day,
 N. J. Neustadt, S. W. of the Day ;
 L'y Franklin, J. W. of the Day ;
 R. Lewis, Architect ;
 Jno. Wright, S. D. ;

H. Holbrook,
 Wm. Leigh Secretary ;
 Thos. Low, Treasurer ;
 Chief Justice Cameron, Bible Bearer ;
 E. C. Holden, to carry W. Master's Light ;
 H. Nathan jr, to carry S. W. Light ;
 J. E. Hunt to carry J. W. Light ;
 Simeon Dek. } Masters of the
 John Bank, } Ceremonies ;
 The Rev. Moa. Somerville, Grand Chaplain ;
 M. W. Watt, Depute Master ;
 J. W. Keyer, Substitute Master ;
 Geo. Creighton, Tyler ;
 Thos C Nuttall, to carry Tracing Board ;
 T. G. Morris, } to act
 Sam'l Harris, } ns 1st }
 J. F. McCreight, } to act } Stewards ;
 Capt. Clark, } ns 2d }

F. C., J. W. Trahey, to carry Rough Ashler ;
 R. B. Powell, to carry J. W.'s Column ;
 J. Moorhead, to carry S. W.'s Column ;
 J. R. Stewart, to carry Books of Constitutions ;
 E. R. Shain, to carry Perfect Ashler.

The Lodge will be opened in the three Degrees.

The Secretary of the Day will read the order of the Procession, which will be as follows :

ORDER OF PROCESSION :

- Bro. Geo. Creighton, Tyler, with drawn Sword ;
- Bros. T. G. Morris and Sam'l Harris, Stewards with rods ;
- Entered Apprentices, two and two ;
- Fellow Crafts, two and two ;
- Master Masons, two and two ;
- Visiting Brethren, from adjacent Lodges, two and two, in order—the lowest in rank first and Master Masons last.

MUSIC... VOLUNTEER BAND.

- Bro. Plummer, Inner Guard, with Drawn Sword ;
- Bro. Naylor, P. M., carrying Vessel with Corn ;
- Bro. Pearkes, P. M., carrying Vessel with Wine ;
- Bro. Southgate, P. M., carrying Vessel with Oil ;

The Lodge, (Tracing Board 1st Degree,) carried by Bro. Thos. C. Nuttall ;

Bro. Lewis, Architect, with Tools ;

Bro. Leigh, Secretary of the Day ;

Bro. T. Lowe, Treasurer of the Day ;

Bro. J. G. McKay,
Standard Bearer of
Victoria Lodge.

Bro. David Cameron,
Carrying Bible,
Square and Compasses

Bro. Heisterman,
Standard Bearer of
Vancouver Lodge.

Bro. Somerville, Chaplain of the Day ;

Bro. F. C., J. W. Trahey, carrying Rough Ashler ; Bro. R. B. Powell, carrying J. W.'s Column ;

Bro. J. G. Hunt, carrying J. W.'s Light ;

Bro. L'y Franklin, Junior Warden with Plumb ;

Bro. E. R. Shain, carrying Perfect Ashler ; Bro. Morhead, carrying S. W. Column ;

Bro. H. Nathan, carrying S. W.'s Light ;

Bro. N. J. Nenstadt, Senior Warden with Level ;

Bro. Waitt, Depute Master ; Bro. Keyser, Substitute Master ;

Bro. J. W. Powell, Past M. of the Day ;

Bro. J. R. Stewart, carrying the Constitutions of the G. Lodges of England and Scotland on a cushion ;

Bro. E. C. Holden, carrying R. W. M.'s Light ;

Bro. Rob't Burnaby, W. M. with Square ;

Bro. John Wright, S. D., and Bro. Adams, J. D., with Wands ;

Bros. McCreight and Clark, Stewards with Rods.

Bro. S. LUCK, Director of Ceremonies.

Bro. JOHN HANES, Director of Ceremonies.

After propriety The p street by t the D ide. T he proce At t started Governm The lodge an MUS session of Proc Lodge is are plac eing art The MUS The The To v The The processio

After reading the order of procession, a Short Charge to the Brethren on Propriety of Behavior is given by the Master, and the Lodge adjourned.

The procession will then be formed in the above order and will proceed up Yates street by Douglas and Pandora street to Church. Service at 2 o'clock. On arrival at the Door, the Brethren will file off to right and left, the Band drawing on one side. The Master, preceded by the two Stewards and Deacons entering first, and the procession closing in and following up in inverse order.

At the conclusion of the service the procession returns in the same order as started, marching along Blanchard street, down Fort street, to the New Hall in Government street.

The Band draws up on one side and the Brethren, two and two, enter the Lodge and arrange themselves on either side.

MUSIC—A voluntary or March is performed on the Harmonium and the procession enters the Lodge room, commencing with the Inner Guard in the order of Procession as before noted, and marches round the Lodge three times; the Lodge is then placed in the Centre, the vessels with the elements of Consecration are placed thereon—the Volume of the Sacred Law, the square and compasses being arranged on the Pedestal at its head.

The Master and Officer then take their Seats and the Lodge is resumed.

MUSIC—An Anthem "Hail, universal Lord," will then be sung.

The Masters of Victoria and Vancouver Lodges will then address the Master.

The Architect then addresses the Master.

To which the Master replies.

The Past Master of the Day will then address the Master.

The Master briefly makes reply, and the P. M. uncovers the Lodge, and a procession is formed—in the following order:

ORDER OF PROCESSION :

Directors of Ceremonies with Rods ;
 Two Steward, with Rods ;
 A Past Master with W. M.'s Light ;
 Volume of Sacred Law, with Square and Compasses ;
 Chaplain ;
 Two Past Masters with S. and J. W.'s Lights ;
 Secretary and Treasurer ;
 Junior Warden, with Corn ;
 Senior Warden, with Wine ;
 P. Mr. of the Day, with Oil ;
 W. Master ;
 Two Deacons.

193054

MUSIC...Solemn, slow Music, (March,) played while the procession goes round the room. When the Master arrives at the East, the procession halts, the Music stops, and the grand Chaplain offers the Consecration Prayer.

Response by the Brethren :

"Glory be to God on High; on Earth Peace, Good Will towards Men."

The Junior Warden then delivers The Corn to the Master, who sprinkles it on the Lodge and dedicates it to Free Masonry.

The Grand Honors are then given, taking Time from the Directors of Ceremonies.

MUSIC—Solemn Music (March) and procession as before.

The Senior Warden then delivers The Wine to the Master, who pours it on the Lodge and dedicates it to Virtue.

Grand Honors as before.

MUSIC—Solemn Music, (March,) and procession as before.

The Past Master delivers Oil to the Master, who sprinkles it on the Lodge and dedicates it to Universal Benevolence.

And the Brethren respond :

"The Lord is gracious and his Mercy endureth for ever.

Benediction of the Chaplain, and the Brethren respond :

"Glory be to God on High; Peace on Earth, Good Will toward Men."

Grand Honors.

MUSIC...(Anthem or Hymn.)

Address to the Brethren.

MUSIC—(Sanctus.)

Procession as before three times round the Hall to

MUSIC—Music, (Grand March,) after which the Lodge is closed in the Degrees, and the Brethren adjourn.

procession go
ession halts, t
yer.

wards Men "

who sprinkles

rectors of Cer

who pours it

it on the Lod

ward Men."

closed in the th

