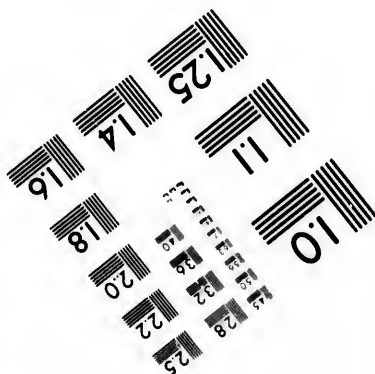
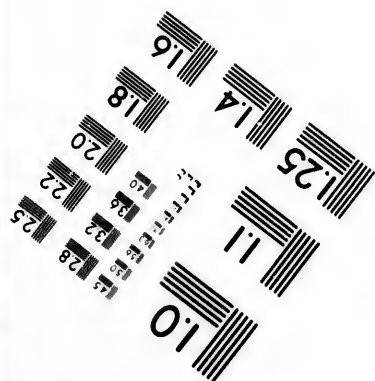
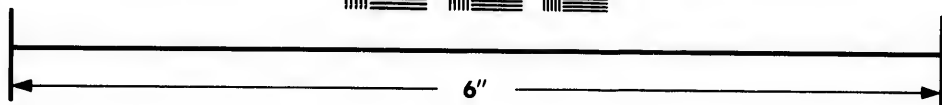
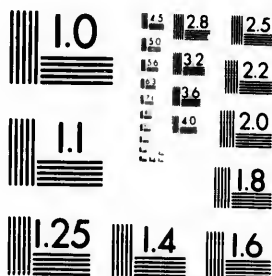


**IMAGE EVALUATION
TEST TARGET (MT-3)**



**Photographic
Sciences
Corporation**

23 WEST MAIN STREET
WEBSTER, N.Y. 14580
(716) 872-4503

14 28
16 32
18 36
20 40
22 44
25 50

**CIHM/ICMH
Microfiche
Series.**

**CIHM/ICMH
Collection de
microfiches.**



Canadian Institute for Historical Microreproductions / Institut canadien de microreproductions historiques

10

© 1981

Technical and Bibliographic Notes/Notes techniques et bibliographiques

The Institute has attempted to obtain the best original copy available for filming. Features of this copy which may be bibliographically unique, which may alter any of the images in the reproduction, or which may significantly change the usual method of filming, are checked below.

L'Institut a microfilmé le meilleur exemplaire qu'il lui a été possible de se procurer. Les détails de cet exemplaire qui sont peut-être uniques du point de vue bibliographique, qui peuvent modifier une image reproduite, ou qui peuvent exiger une modification dans la méthode normale de filmage sont indiqués ci-dessous.

- Coloured covers/
Couverture de couleur
- Covers damaged/
Couverture endommagée
- Covers restored and/or laminated/
Couverture restaurée et/ou pelliculée
- Cover title missing/
Le titre de couverture manque
- Coloured maps/
Cartes géographiques en couleur
- Coloured ink (i.e. other than blue or black)/
Encre de couleur (i.e. autre que bleue ou noire)
- Coloured plates and/or illustrations/
Planches et/ou illustrations en couleur
- Bound with other material/
Relié avec d'autres documents
- Tight binding may cause shadows or distortion
along interior margin/
La reliure serrée peut causer de l'ombre ou de la
distortion le long de la marge intérieure
- Blank leaves added during restoration may
appear within the text. Whenever possible, these
have been omitted from filming/
Il se peut que certaines pages blanches ajoutées
lors d'une restauration apparaissent dans le texte,
mais, lorsque cela était possible, ces pages n'ont
pas été filmées.
- Additional comments:/
Commentaires supplémentaires:

- Coloured pages/
Pages de couleur
- Pages damaged/
Pages endommagées
- Pages restored and/or laminated/
Pages restaurées et/ou pelliculées
- Pages discoloured, stained or foxed/
Pages décolorées, tachetées ou riqüées
- Pages detached/
Pages détachées
- Showthrough/
Transparence
- Quality of print varies/
Qualité inégale de l'impression
- Includes supplementary material/
Comprend du matériel supplémentaire
- Only edition available/
Seule édition disponible
- Pages wholly or partially obscured by errata
slips, tissues, etc., have been refilmed to
ensure the best possible image/
Les pages totalement ou partiellement
obscurcies par un feuillet d'errata, une pelure,
etc., ont été filmées à nouveau de façon à
obtenir la meilleure image possible.

This item is filmed at the reduction ratio checked below/
Ce document est filmé au taux de réduction indiqué ci-dessous.

10X	14X	18X	22X	26X	30X	
<input type="checkbox"/>	<input type="checkbox"/>	<input type="checkbox"/>	<input type="checkbox"/>	<input type="checkbox"/>	<input type="checkbox"/>	<input checked="" type="checkbox"/>
12X	16X	20X	24X	28X	32X	

The copy filmed here has been reproduced thanks to the generosity of:

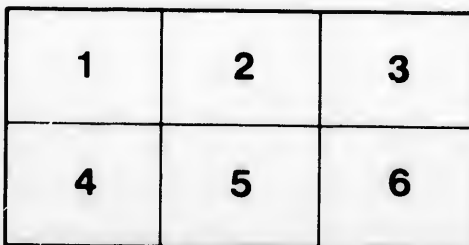
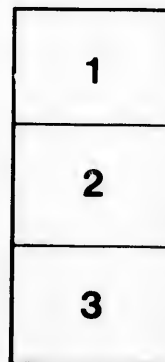
Library Division
Provincial Archives of British Columbia

The images appearing here are the best quality possible considering the condition and legibility of the original copy and in keeping with the filming contract specifications.

Original copies in printed paper covers are filmed beginning with the front cover and ending on the last page with a printed or illustrated impression, or the back cover when appropriate. All other original copies are filmed beginning on the first page with a printed or illustrated impression, and ending on the last page with a printed or illustrated impression.

The last recorded frame on each microfiche shall contain the symbol \rightarrow (meaning "CONTINUED"), or the symbol ∇ (meaning "END"), whichever applies.

Maps, plates, charts, etc., may be filmed at different reduction ratios. Those too large to be entirely included in one exposure are filmed beginning in the upper left hand corner, left to right and top to bottom, as many frames as required. The following diagrams illustrate the method:



L'exemplaire filmé fut reproduit grâce à la générosité de:

Library Division
Provincial Archives of British Columbia

Les images suivantes ont été reproduites avec le plus grand soin, compte tenu de la condition et de la netteté de l'exemplaire filmé, et en conformité avec les conditions du contrat de filmage.

Les exemplaires originaux dont la couverture en papier est imprimée sont filmés en commençant par le premier plat et en terminant soit par la dernière page qui comporte une empreinte d'impression ou d'illustration, soit par le second plat, selon le cas. Tous les autres exemplaires originaux sont filmés en commençant par la première page qui comporte une empreinte d'impression ou d'illustration et en terminant par la dernière page qui comporte une telle empreinte.

Un des symboles suivants apparaîtra sur la dernière image de chaque microfiche, selon le cas: le symbole \rightarrow signifie "A SUIVRE", le symbole ∇ signifie "FIN".

Les cartes, planches, tableaux, etc., peuvent être filmés à des taux de réduction différents. Lorsque le document est trop grand pour être reproduit en un seul cliché, il est filmé à partir de l'angle supérieur gauche, de gauche à droite, et de haut en bas, en prenant le nombre d'images nécessaire. Les diagrammes suivants illustrent la méthode.

ails
du
odifier
une
nage

rrata
o

pelure,
n à



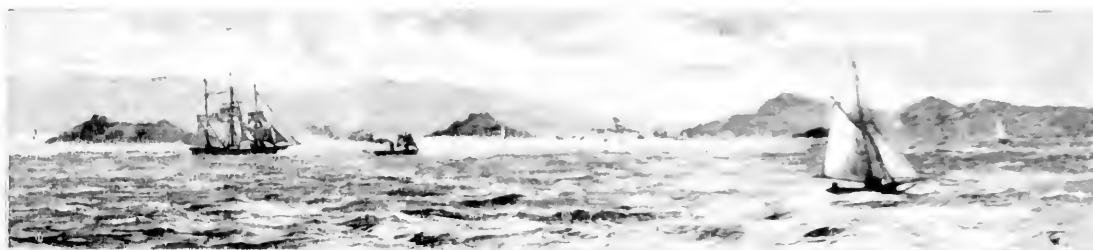
32X



The Tour of the Princess Louise and the Marquis of Lorne

FROM SKETCHES BY

HIS EXCELLENCY THE MARQUIS OF LORNE, K.T., GOVERNOR-GENERAL OF CANADA



AN FRANCISCO BAY, FROM THE GOLDEN AGE



THE GOLDEN AGE, AN FRANCISCO BAY, LEAVING THE BAY OF SAN FRANCISCO, CALIFORNIA



GOVERNMENT HOUSE, THE KEY, SEATTLE, WASHINGTON



MOUNT BAKER AND SAN JUAN ISLAND AS SEEN THROUGH A FIELD GLASS FROM GOVERNMENT HOUSE, SEATTLE, WASH.



THE TOWN OF THE PRINCESS LOUISE AND THE MARQUIS OF TORNE
BY THE MARQUIS OF TORNE, K.T., GOVERNOR-GENERAL OF CANADA

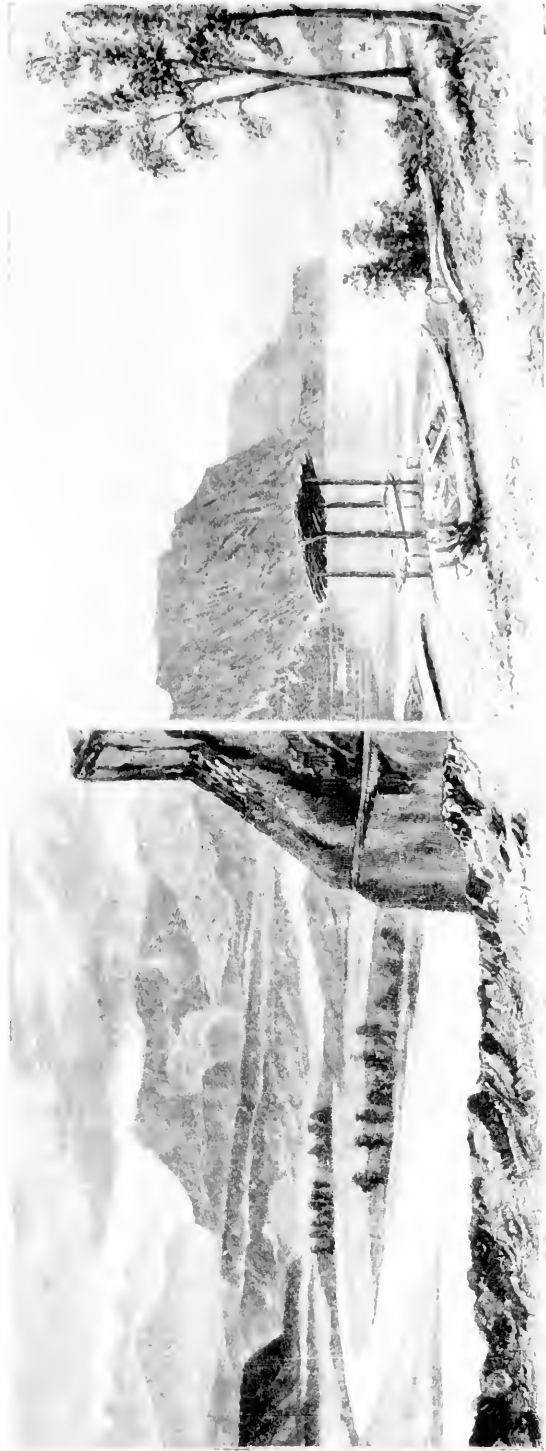


FIG. 1. THE SIDE OF MOUNT EVEREST.

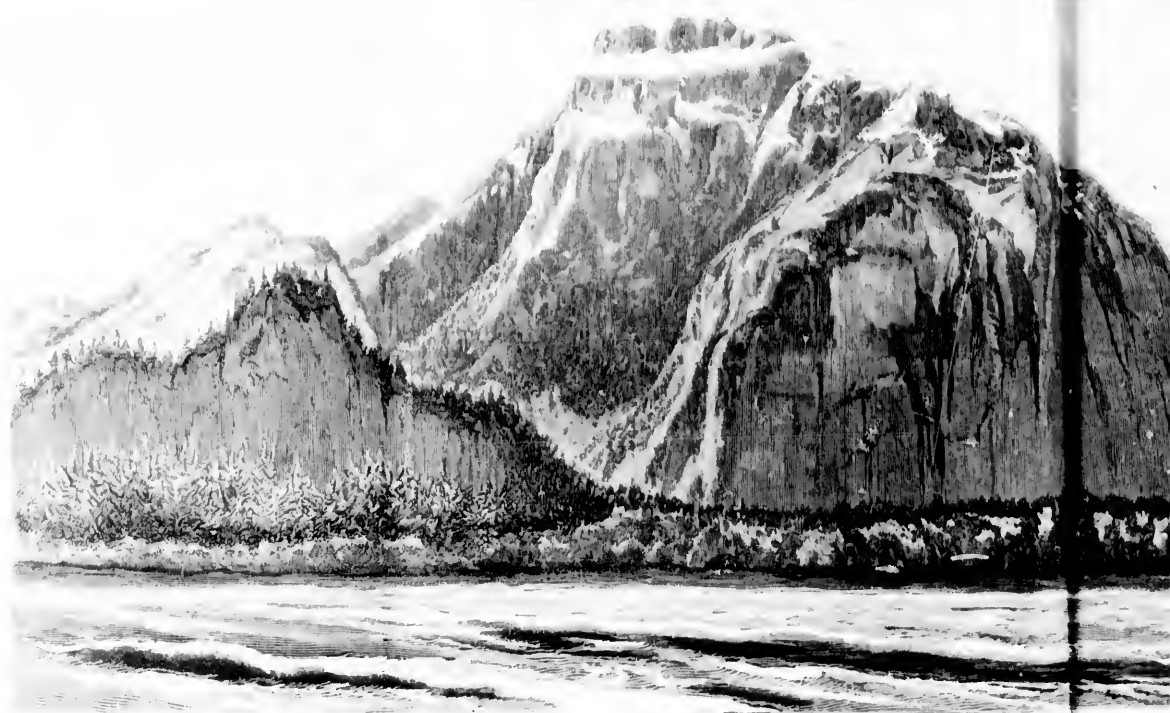


THE VILLAGE OF MABLOOTS AT THE CONFLUENCE OF THE NORTH AND SOUTH THOMPSON RIVERS.

FIG. 2. THE CONFLUENCE OF THE NORTH AND SOUTH THOMPSON RIVERS.

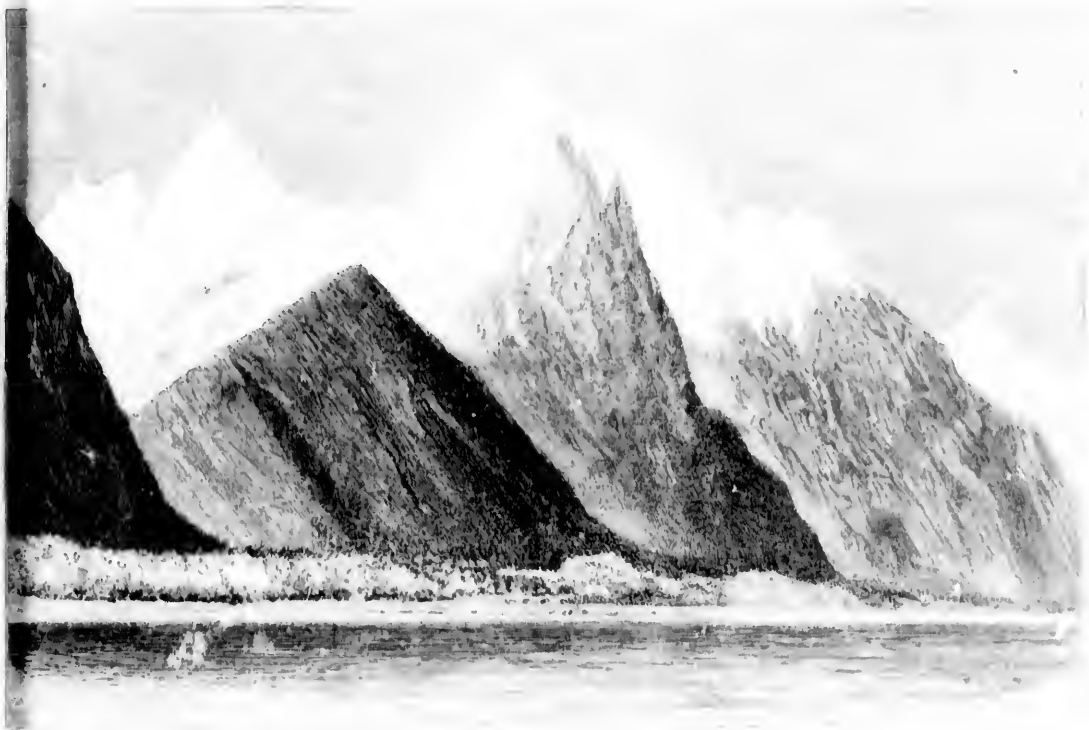


THE FINE BIFURS AND A REACH OF THE FRASER RIVER



MOUNT HOPE, ON THE FRASER

THE TOUR OF THE PRINCESS LOUISE
FROM KETICU BY HIS EXCELLENCY THE MARSHAL OF TORONTO



THE PEAKS OF THE FLOWERS



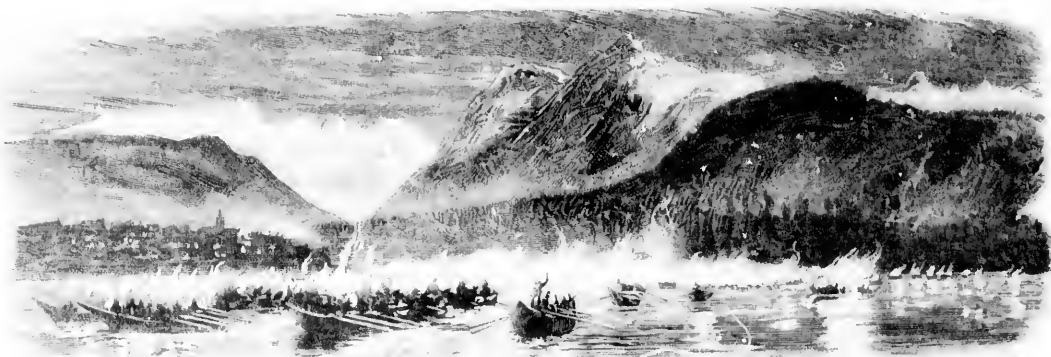
MOUNT HOPE, ON THE FRASER RIVER

S. LOUISE AND THE MARQUIS OF LORNE

BY THE MARQUESS OF LORNE, K.T. GOVERNOR-GENERAL OF CANADA



THE LAKE OF THE MARQUIS



THE RIVER OF THE MARQUIS



JAMWEL'S VALLEY, BETWEEN SALMON RIVER AND LAKE OKANAAN

THE TOUR OF THE PRINCESS LOUISE AND THE MARQUIS OF LORNE

BY THE REV. F. J. F. S. V. THE MARQUESS OF LORNE, K.T., GOVERNOR-GENERAL OF CANADA



AT FRANKLIN, THE PRESENT TERMINUS OF THE CANADIAN PACIFIC RAILWAY



AT POKARD INLET, THE SEASONAL TERMINUS OF THE CANADIAN PACIFIC RAILWAY



INDIANS AT LAKE OKANAGAN

THE FOUR OF THE PRINCESS LOUISE AND THE MARQUIS OF TORNI
FROM SKETCHES BY HIS EXCELLENCY THE MARQUIS OF LORNE, K.T., GOVERNOR-GENERAL OF CANADA

WISDOM IS THE ONLY SOURCE OF REAL HAPPINESS, AND THE ONLY GOAL WORTHY OF A MAN'S AMBITION.

THE GREATEST BENEFIT THE HUMAN MIND CAN CONCEIVE. A ROYAL and NOBLE EXAMPLE!!!

"REFERRING to the continued manifestations of interest in... AND NO SICKNESS. AND NO DEATHS!!!"

WITH EACH BOTTLE OF FRUIT SALT is wrapped a Large... IMPORTANT TO ALL - Especially to Consuls, Ship Captains.

ENOS'S FRUIT SALT is particularly valuable. No Traveller... FOR BILIOUSNESS or SICK HEADACHE, GIDDINESS.

CAUTION. - LEGAL RIGHTS ARE PROTECTED IN EVERY CIVILISED COUNTRY. Examne each Bottle, and see the Capsule is marked 'ENOS'S FRUIT SALT.'"



PREVENTIBLE DEATH. - Why should fever, that vile slayer of... A NATURAL WAY OF RESTORING or PRESERVING TO EUROPEANS WHO PROPOSE RESIDING IN OR

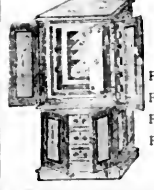
IMPORTANT to TRAVELLERS TORPID LIVER HEADACHE and DISORDERED STOMACH. CHRONIC DYSPEPSIA. - A gentleman called in yesterday SUCCESS IN LIFE & every attention is brought before

THE NEW NOVEL BY A NEW NOVELIST WHO IS SYLVIA? DOROTHY'S VENTURE. A MARRIED IN HASTE. ANOV. THE FOOL'S REVENGE. THE CORNHILL MAGAZINE

IMPERIAL VELVETEEN



EGERTON BURNETT TO ENSURE A CLEAR SKIN A BEAUTIFUL GIFT!



MILNERS' SAFES For Jewellery, For Diamonds, For Deeds, For Plates, &c., &c.



IMPROVED SPECIALES - Mr. HENRY J. RANBY'S

CHAPMAN'S, NOTTING HILL, W. UNPRECEDENTED BARGAINS JANUARY, 1881

ANGLO-INDIAN RICH CORDED BLACK SILKS. SATINS 20s, 25s, 30s, and 35s. SATINS RICH DUCHESSE SILKS - Black, Surahs, 1s. 6d. IDENTIC VELVETEEN. 100,000 DRESSES FOR VELOUR ANGLAIS, 7s. 11d. the SCOTCH MIXTURES, 7s. 11d. the NEW CHECKS 8s to 10s 6d. per MUMMY CLOTH, Evening FRENCH CASHMERE, 1s. 9d. FRENCH MERINOS, 1s. 9d per



THE STANDARD LIFE ASSURANCE COMPANY. LIFE ASSURANCE AT HOME & ABROAD. Accumulated Fund, 57 Millions Sterling. EDINBURGH 3 George St. (Head Office) LONDON, 25 King William Street, E.C. DUBLIN, 60 Upper Macmillan Street.

THE BIJOU CAMERA REGISTERED. A BEAUTIFUL GIFT!

REDFERN LADIES' & GENTS' TAILOR

GOWNS, RIDING HABITS & JACKETS, 26, CONDUIT STREET, LONDON, W. COWES, Isle of Wight, & 242, Rue de Rivoli (Place de la Concorde) PARIS.

DEAFNESS

GRANDE CHARTREUSE. HOLLOWAY'S PILLS

