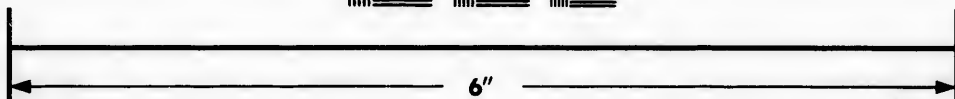
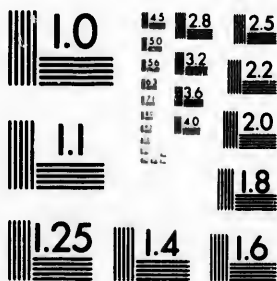


**IMAGE EVALUATION
TEST TARGET (MT-3)**



**Photographic
Sciences
Corporation**

23 WEST MAIN STREET
WEBSTER, N.Y. 14580
(716) 872-4503

**CIHM/ICMH
Microfiche
Series.**

**CIHM/ICMH
Collection de
microfiches.**



Canadian Institute for Historical Microreproductions / Institut canadien de microreproductions historiques

© 1981

Technical and Bibliographic Notes/Notes techniques et bibliographiques

The Institute has attempted to obtain the best original copy available for filming. Features of this copy which may be bibliographically unique, which may alter any of the images in the reproduction, or which may significantly change the usual method of filming, are checked below.

L'institut a microfilmé le meilleur exemplaire qu'il lui a été possible de se procurer. Les détails de cet exemplaire qui sont peut-être uniques du point de vue bibliographique, qui peuvent modifier une image reproduite, ou qui peuvent exiger une modification dans la méthode normale de filmage sont indiqués ci-dessous.

- Coloured covers/
Couverture de couleur
- Covers damaged/
Couverture endommagée
- Covers restored and/or laminated/
Couverture restaurée et/ou pelliculée
- Cover title missing/
Le titre de couverture manque
- Coloured maps/
Cartes géographiques en couleur
- Coloured ink (i.e. other than blue or black)/
Encre de couleur (i.e. autre que bleue ou noire)
- Coloured plates and/or illustrations/
Planches et/ou illustrations en couleur
- Bound with other material/
Relié avec d'autres documents
- Tight binding may cause shadows or distortion along interior margin/
La reliure serrée peut causer de l'ombre ou de la distorsion le long de la marge intérieure
- Blank leaves added during restoration may appear within the text. Whenever possible, these have been omitted from filming/
Il se peut que certaines pages blanches ajoutées lors d'une restauration apparaissent dans le texte, mais, lorsque cela était possible, ces pages n'ont pas été filmées.
- Additional comments:
Commentaires supplémentaires:

- Coloured pages/
Pages de couleur
- Pages damaged/
Pages endommagées
- Pages restored and/or laminated/
Pages restaurées et/ou pelliculées
- Pages discoloured, stained or foxed/
Pages décolorées, tachetées ou piquées
- Pages detached/
Pages détachées
- Showthrough/
Transparence
- Quality of print varies/
Qualité inégale de l'impression
- Includes supplementary material/
Comprend du matériel supplémentaire
- Only edition available/
Seule édition disponible
- Pages wholly or partially obscured by errata slips, tissues, etc., have been refilmed to ensure the best possible image/
Les pages totalement ou partiellement obscurcies par un feuillet d'errata, une pelure, etc., ont été filmées à nouveau de façon à obtenir la meilleure image possible.

This item is filmed at the reduction ratio checked below/
Ce document est filmé au taux de réduction indiqué ci-dessous.

10X	14X	18X	22X	26X	30X
<input type="checkbox"/>	<input type="checkbox"/>	<input type="checkbox"/>	<input type="checkbox"/>	<input checked="" type="checkbox"/>	<input type="checkbox"/>
12X	16X	20X	24X	28X	32X

The copy filmed here has been reproduced thanks to the generosity of:

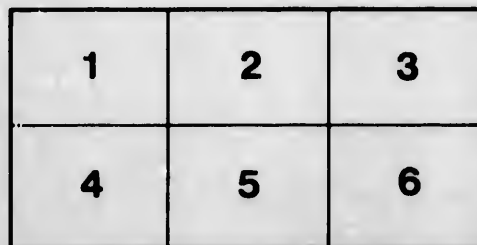
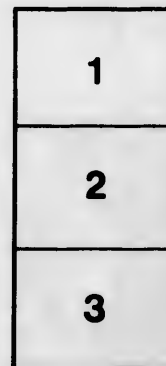
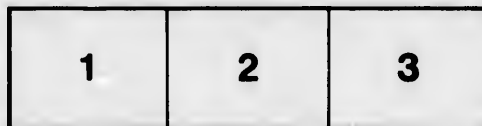
Library Division
Provincial Archives of British Columbia

The images appearing here are the best quality possible considering the condition and legibility of the original copy and in keeping with the filming contract specifications.

Original copies in printed paper covers are filmed beginning with the front cover and ending on the last page with a printed or illustrated impression, or the back cover when appropriate. All other original copies are filmed beginning on the first page with a printed or illustrated impression, and ending on the last page with a printed or illustrated impression.

The last recorded frame on each microfiche shell contain the symbol → (meaning "CONTINUED"), or the symbol ∇ (meaning "END"), whichever applies.

Maps, plates, charts, etc., may be filmed at different reduction ratios. Those too large to be entirely included in one exposure are filmed beginning in the upper left hand corner, left to right and top to bottom, as many frames as required. The following diagrams illustrate the method:



L'exemplaire filmé fut reproduit grâce à la générosité de:

Library Division
Provincial Archives of British Columbia

Les images suivantes ont été reproduites avec le plus grand soin, compte tenu de la condition et de la netteté de l'exemplaire filmé, et en conformité avec les conditions du contrat de filmage.

Les exemplaires originaux dont la couverture en papier est imprimée sont filmés en commençant par le premier plat et en terminant soit par la dernière page qui comporte une empreinte d'impression ou d'illustration, soit par le second plat, selon le cas. Tous les autres exemplaires originaux sont filmés en commençant par la première page qui comporte une empreinte d'impression ou d'illustration et en terminant par la dernière page qui comporte une telle empreinte.

Un des symboles suivants apparaîtra sur la dernière image de chaque microfiche, selon le cas: le symbole → signifie "A SUIVRE", le symbole ∇ signifie "FIN".

Les cartes, planches, tableaux, etc., peuvent être filmés à des taux de réduction différents. Lorsque le document est trop grand pour être reproduit en un seul cliché, il est filmé à partir de l'angle supérieur gauche, de gauche à droite, et de haut en bas, en prenant le nombre d'images nécessaire. Les diagrammes suivants illustrent la méthode.

ils
du
diffier
une
age

rate
elure,
▲

2X

te

He

Colu
Com
sons
are
asso

Paci
spot
coun
excu

Hen
him
it wi
toba
scho
forfe

Victoria Coll.

Corrig College,

VICTORIA, BRITISH COLUMBIA.

Head-Master, J. W. CHURCH, M. A., *Late Asst. Master, Westbourne Park College, 1885; Head-Master Middlesbrough Grammar School, England. 1885-90; Gabbett Prizeman in Moral and Mental Philosophy and Thorpe Scholar of the University of Durham; Student in Philosophy of the University of Edinburgh; Science Master under the Lords of the Committee of Council on Education, England, &c.*

This Boarding and Day School, the oldest Private and Select College in the Province of British Columbia, conducted entirely on the English Grammar School system, offers a thorough Practical Commercial or Professional Education at *moderate and reasonable fees*. It aims at providing for the sons of the best families in the Province and adjoining State of Washington those advantages which are likely to accrue from residence in a simple, quite, Christian and Gentlemanly home, and from association with pure, obedient, well behaved and industrious comrades.

Situation.

The beautiful City of Victoria possesses the most mild, equable and healthy climate on the Pacific Coast. Infectious diseases are unknown. The school itself is situated in a retired and lovely spot, and stands in its own grounds. It is in close proximity to Beacon Hill Park, and beautiful country, and bracing seaside walks abound on every hand. Boating, bathing, fishing and picnic excursions on the Victoria "Arm" are easily available.

Discipline.

The discipline of the school is mild but firm, and since no corporal punishment is resorted to, the Head-Master expects the pupils to render to him unquestioning and instant obedience, and to both himself and all their fellow pupils the same polite attention and regard they in turn receive. Hence it will be seen the school is unsuited for spoilt, pampered or disobedient boys, for boys who use tobacco, profane language or ardent spirits, (since no intoxicants of any kind are allowed on the school premises save by Doctor's orders). Disobedience after warning will lead to expulsion with forfeiture of the term bill.

NW
971.52
C825P

The Course of Instruction

Is founded on the *thorough* study of the subjects of a sound, useful, English Education and includes;— Reading, Writing, Orthography, Mental and Written Arithmetic, Euclid, Algebra, Grammar, Language, Literature and History, Physical, General and Commercial Geography, Map drawing, Composition, Commercial Correspondence and the Latin Language and Literature. The extra studies include:—French Language, Literature and Commercial Correspondence, German, Greek, Spanish, Book-keeping, Shorthand (Pitman's) Elementary Sciences (varied from term to term) and Freehand Mechanical and Model Drawing. Every subject is taught on the small class system and in separate class rooms, and the lessons are performed under the Head-Master's personal supervision when not actually by himself; thus the crying evil by which the education of scholars in our larger schools is sometimes permanently placed in the hands of assistant and too often inefficient masters is completely avoided

Boys may be prepared for the Commercial examinations, the Law, Medical, Military or Naval Services, or the Universities; and as far as possible each lad's work is arranged with a view to *his future career*.

Success.

During the past the pupils have almost invariably passed their Law, Medical, Army and Navy, University and Business examinations with distinction. This is doubtless due to the fact that the school is limited to such a number as to enable the work of each scholar to be under the personal supervision of the Head Master.

Boarding.

Boarders are alone taken by the Head-Master. They reside and board in his house and are at all times under personal control and supervision, so that nothing is allowed to interfere with their regular course of studies. They enjoy every privilege of a gentlemanly home in common with himself and masters. The table is excellent, and opportunities for indoor and outdoor enjoyment are numerous. A kind and well experienced housekeeper looks after their home comforts, clothes, &c. All are expected to attend Divine Service at least once every Sunday.

Terms, Holidays, &c.

There are four terms in the year, each of ten weeks. The holidays are two weeks at Christmas one week at Easter and ten weeks at midsummer.

Fees.

The fees for Boarding and Tuition are:—

Under 12 years of age	\$85 per term.	} <i>inclusive</i>
From 12 to 14 "	\$90 "	
Over 14 years "	\$95 "	
The fee for day pupils is	\$20 "	

Extra Studies (per school month of four weeks):—French (elementary) \$3; advanced class \$5, Book-keeping, German, Greek, Shorthand and Spanish \$5 each; Drawing (Mechanical, Freehand and Model) \$3 each, two branches or more, \$5; Sciences (Physiography, Physiology, Zoology, Botany, Biology, Chemistry, Hygiene, Logic or Political Economy) \$3 each, two branches \$5. All fees are payable during the first month of each term.

30 day pupils only. 7.⁵⁰ per term

Boarder's fee inclusive

Clubs, Recreation, &c.

There are football, cricket and harrier clubs in connection with the school, Beacon Hill Park forming an excellent recreation ground. The Indoor Club meets at the school for a social evening once a fortnight during the winter, when music and games such as chess, draughts, dominoes, &c., are permitted. Boating, fishing, country walks and pic-nic excursions are also occasionally indulged in.

List of Some Necessary Articles.

A Bible and Prayer Book.	Three pillow cases.	Napkins and napkin ring.
Four sheets for single bed.	Two bath towels.	Pair of slippers.
A bag for soiled linen.	A sponge and toilet soaps.	Clothes brush.
A dark counterpane.	Two pairs of blankets.	Blacking and brush.
Three towels.		

All clothing must be marked with the owners name in full.

Remarks.

It is especially necessary for the proper advancement of day scholars that school work should be carefully prepared at home, and the co-operation of parents, by giving their sons a particular time and place for this preparation, is earnestly solicited.

A term's notice in writing is required before the removal of pupils, or a term's fees will be expected.

Written examinations are held at Christmas and Midsummer; the latter being conducted by exterior University Examiners, on whose public reports the school prizes are awarded.

Special private day or evening tuition or preparation for examinations can be arranged for.

All communications should be made direct to the Head-Master, who will gladly, out of school hours, consult with parents with respect to school arrangements.



176392

NEXT TERM BEGINS

Mon: ^{the} Sept 10th 1904

N
9
C

Dorrig College, Victoria, B. C.



