

**CIHM
Microfiche
Series
(Monographs)**

**ICMH
Collection de
microfiches
(monographies)**



Canadian Institute for Historical Microreproductions / Institut canadien de microreproductions historiques

© 1998

Technical and Bibliographic Notes / Notes techniques et bibliographiques

The Institute has attempted to obtain the best original copy available for filming. Features of this copy which may be bibliographically unique, which may alter any of the Images in the reproduction, or which may significantly change the usual method of filming are checked below.

- Coloured covers / Couverture de couleur
- Covers damaged / Couverture endommagée
- Covers restored and/or laminated / Couverture restaurée et/ou pelliculée
- Cover title missing / Le titre de couverture manque
- Coloured maps / Cartes géographiques en couleur
- Coloured ink (i.e. other than blue or black) / Encre de couleur (i.e. autre que bleue ou noire)
- Coloured plates and/or illustrations / Planches et/ou illustrations en couleur
- Bound with other material / Relié avec d'autres documents
- Only edition available / Seule édition disponible
- Tight binding may cause shadows or distortion along interior margin / La reliure serrée peut causer de l'ombre ou de la distorsion le long de la marge intérieure.
- Blank leaves added during restorations may appear within the text. Whenever possible, these have been omitted from filming / Il se peut que certaines pages blanches ajoutées lors d'une restauration apparaissent dans le texte, mais, lorsque cela était possible, ces pages n'ont pas été filmées.
- Additional comments / Commentaires supplémentaires:

L'Institut a microfilmé le meilleur exemplaire qu'il lui a été possible de se procurer. Les détails de cet exemplaire qui sont peut-être uniques du point de vue bibliographique, qui peuvent modifier une image reproduite, ou qui peuvent exiger une modification dans la méthode normale de filmage sont indiqués ci-dessous.

- Coloured pages / Pages de couleur
- Pages damaged / Pages endommagées
- Pages restored and/or laminated / Pages restaurées et/ou pelliculées
- Pages discoloured, stained or foxed / Pages décolorées, tachetées ou piquées
- Pages detached / Pages détachées
- Showthrough / Transparence
- Quality of print varies / Qualité inégale de l'impression
- Includes supplementary material / Comprend du matériel supplémentaire
- Pages wholly or partially obscured by errata slips, tissues, etc., have been refilmed to ensure the best possible image / Les pages totalement ou partiellement obscurcies par un feuillet d'errata, une pelure, etc., ont été filmées à nouveau de façon à obtenir la meilleure image possible.
- Opposing pages with varying colouration or discolourations are filmed twice to ensure the best possible image / Les pages s'opposant ayant des colorations variables ou des décolorations sont filmées deux fois afin d'obtenir la meilleure image possible.

This item is filmed at the reduction ratio checked below /
Ce document est filmé au taux de réduction indiqué ci-dessous.

	10x		14x		18x		22x		26x		30x	
									<input checked="" type="checkbox"/>			
	12x		16x		20x		24x		28x		32x	

The copy filmed here has been reproduced thanks to the generosity of:

British Columbia Archives and Records Service.

The images appearing here are the best quality possible considering the condition and legibility of the original copy and in keeping with the filming contract specifications.

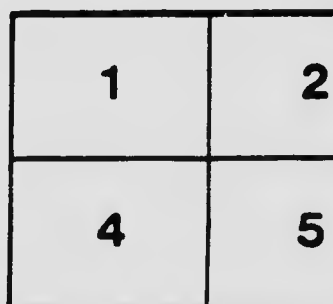
Original copies in printed paper covers are filmed beginning with the front cover and ending on the last page with a printed or illustrated impression, or the back cover when appropriate. All other original copies are filmed beginning on the first page with a printed or illustrated impression, and ending on the last page with a printed or illustrated impression.

The last recorded frame on each microfiche shall contain the symbol \rightarrow (meaning "CONTINUED"), or the symbol ∇ (meaning "END"), whichever applies.

Maps, plates, charts, etc., may be filmed at different reduction ratios. Those too large to be entirely included in one exposure are filmed beginning in the upper left hand corner, left to right and top to bottom, as many frames as required. The following diagrams illustrate the method:



:



L'exemplaire filmé fut reproduit grâce à la générosité de:

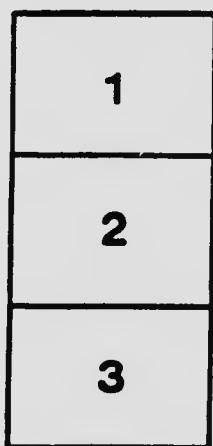
British Columbia Archives and Records Service.

Les images suivantes ont été reproduites avec la plus grand soin, compte tenu de la condition et de la netteté de l'exemplaire filmé, et en conformité avec les conditions du contrat de filmage.

Les exemplaires originaux dont la couverture en papier est imprimée sont filmés en commençant par le premier plat et en terminant soit par la dernière page qui comporte une empreinte d'impression ou d'illustration, soit par le second plat, selon le cas. Tous les autres exemplaires originaux sont filmés en commençant par la première page qui comporte une empreinte d'impression ou d'illustration et en terminant par la dernière page qui comporte une telle empreinte.

Un des symboles suivants apparaît sur la dernière image de chaque microfiche, selon le cas: le symbole \rightarrow signifie "A SUIVRE", le symbole ∇ signifie "FIN".

Les cartes, planches, tableaux, etc., peuvent être filmés à des taux de réduction différents. Lorsque le document est trop grand pour être reproduit en un seul cliché, il est filmé à partir de l'angle supérieur gauche, de gauche à droite, et de haut en bas, en prenant le nombre d'images nécessaire. Les diagrammes suivants illustrent la méthode.



M.F. & M. No. 19
Cancelling No. 15.

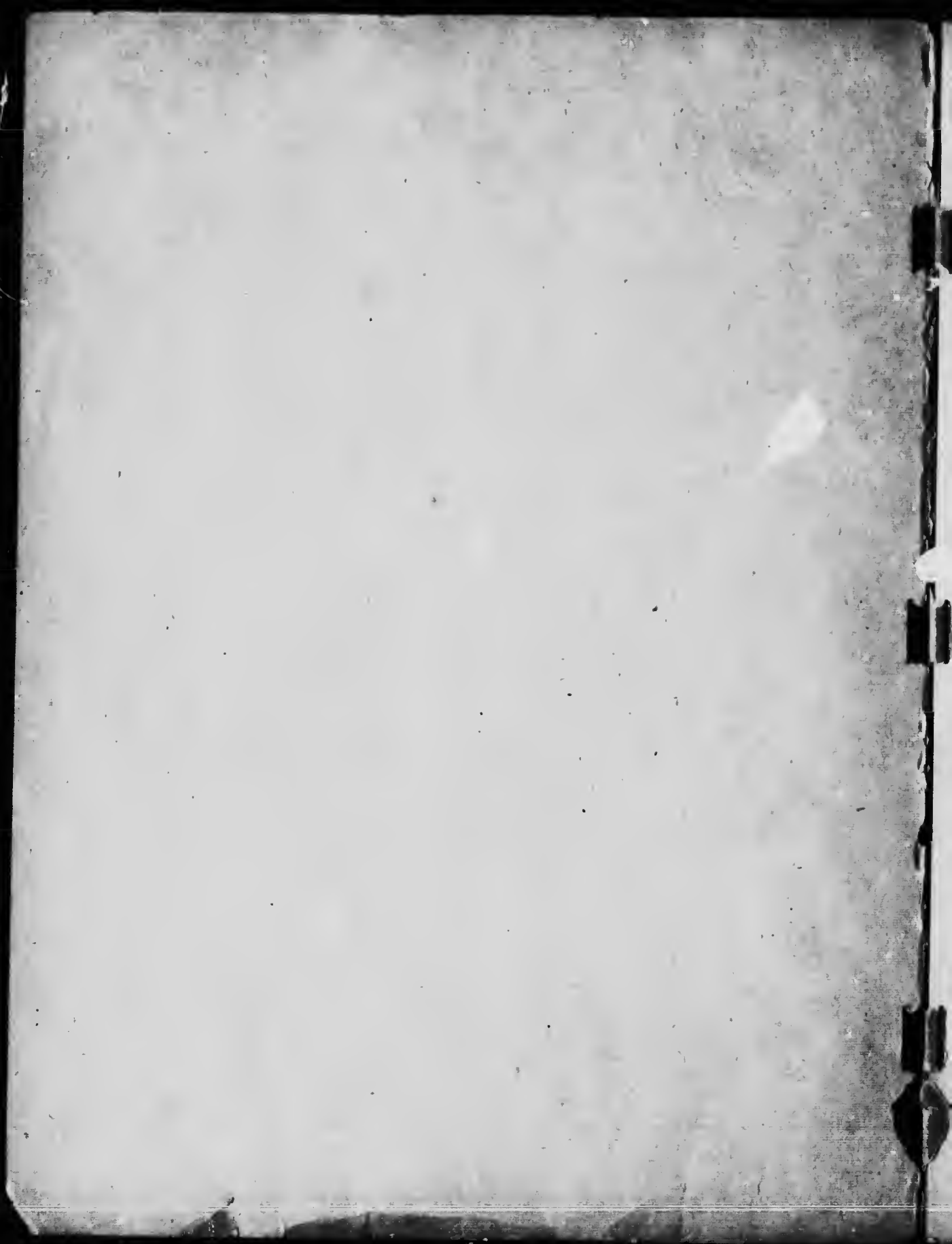
Morrissey, Fernie & Michel Railway.

LIST OF FREIGHT TARIFFS.

This Index contains List of Tariff publications in effect June 15, 1912 (or which have been filed to become effective at a later date, as shown within.)

Issued June 15, 1912.

By **R. M. YOUNG,**
Secretary M.F. & M. Ry.,
FERNIE, B.C.



Only 1 Supplement to this tariff will be
in effect at any time.

M.F. & M. C.R.C. No. 23
Cancelling M.F. & M. C.R.C.No. 15.

M.F. & M. I.C.C. No 2.
Cancelling " " No. 1

M.F. & M. No. 19
Cancelling No. 15.

Morrissey, Fernie & Michel Railway.

LIST OF FREIGHT TARIFFS.

This Index contains List of Tariff publications in effect June 15, 1912 (or which have
been filed to become effective at a later date, as shown within.)

Issued June 15, 1912.

By **R. M. YOUNG,**
Secretary M.F. & M. Ry.,
FERNIE, B.C.

L834-4429

TABLE OF CONTENTS.

	Pages
List of Stations on M. F. & M. Ry. (C. C. Branch)	3

Section 1.

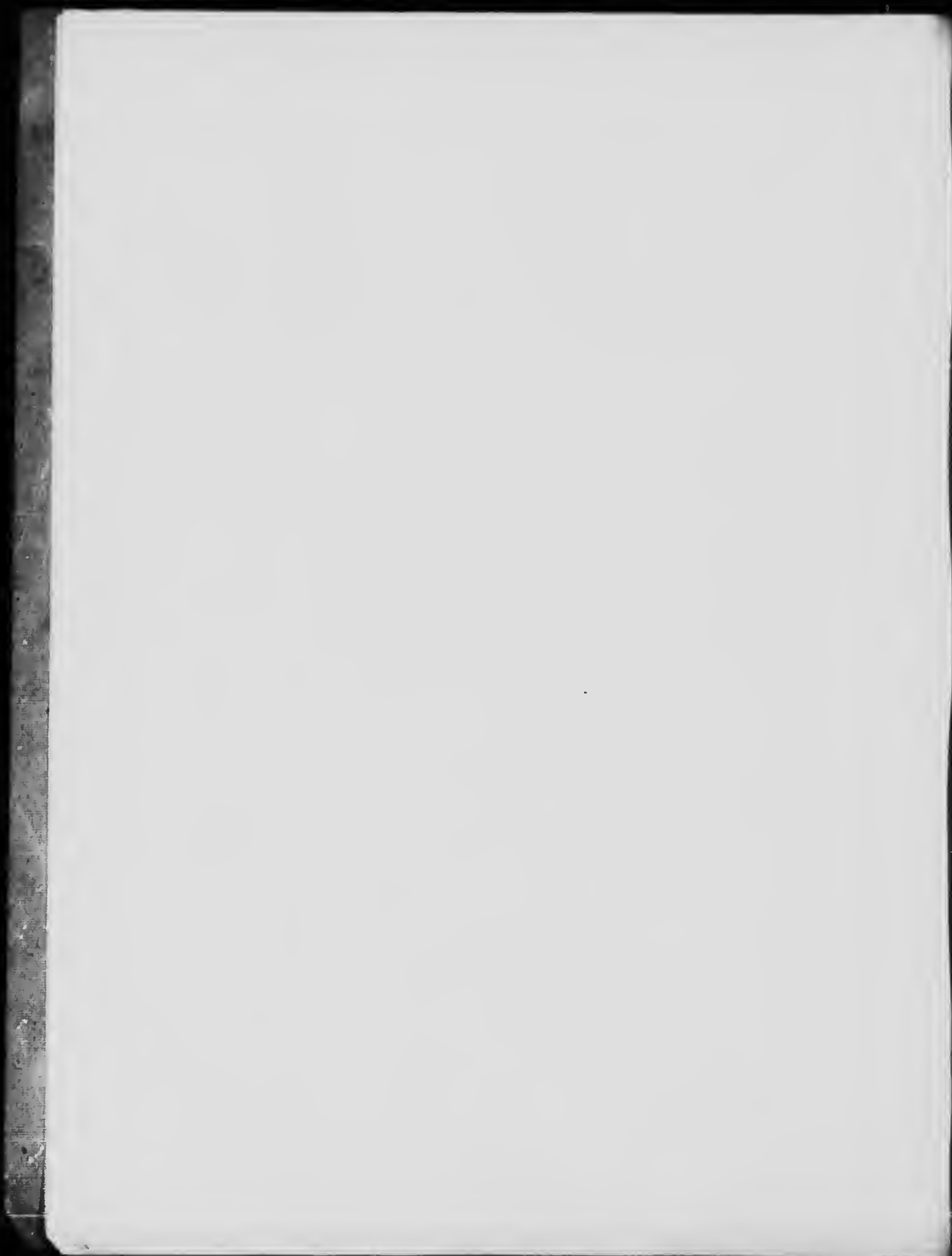
Tariffs Classifications and Rate Schedules in which the M. F. & M. Ry. is an initial carrier . .	4 to 6
--	--------

Section 2.

Tariffs Classifications & Rate Schedules in which the M. F. & M. Ry. is a delivering carrier . .	7 & 8
--	-------

Section 3.

Numerical list of L. C. C. numbers.	
-------------------------------------	--

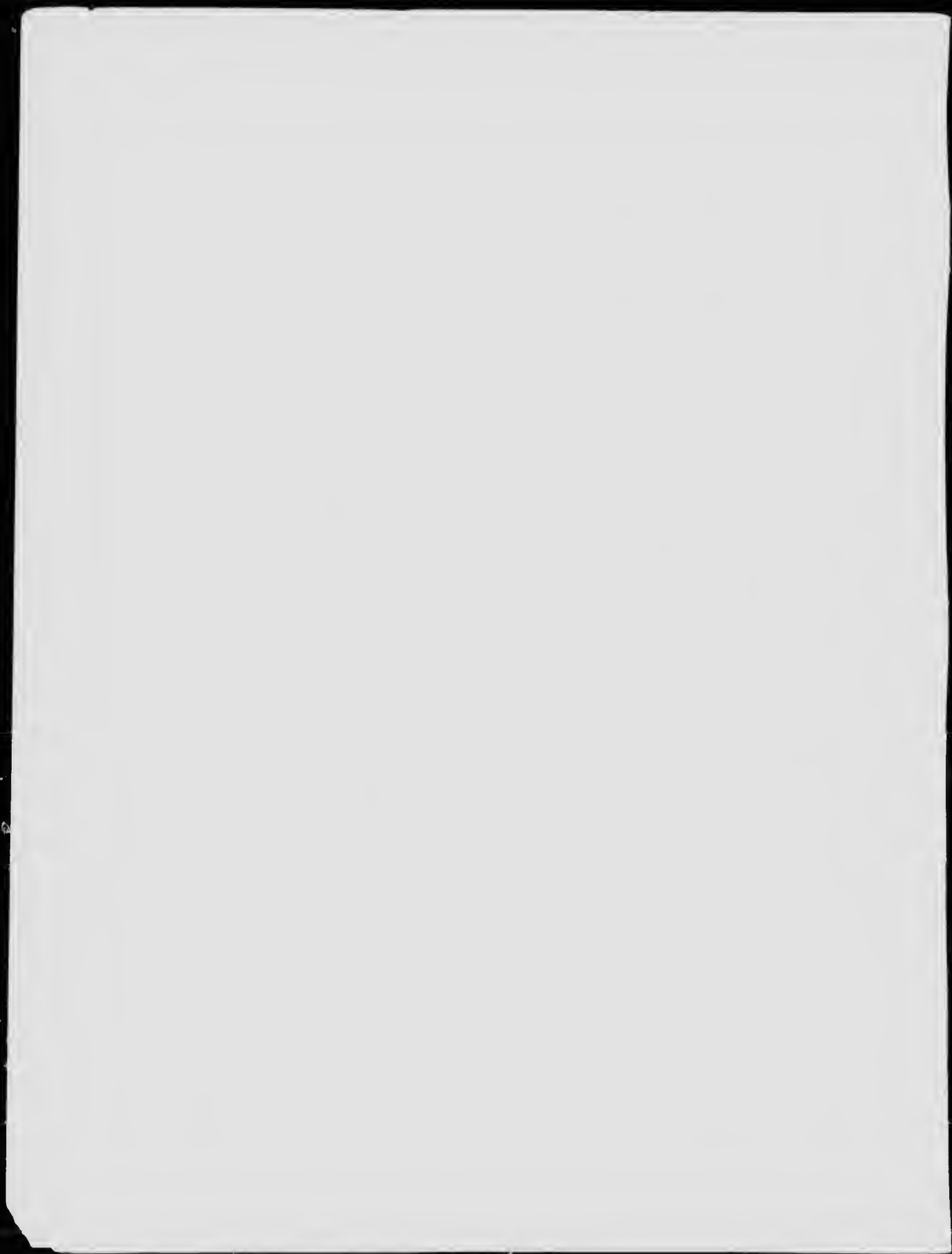


**List of Stations on
MORRISSEY, FERNIE & MICHEL RAILWAY.**

(Coal Creek Branch—Carbado Branch not
being Operated).

G. N. Fernie x N. 0
C. P. Fernie x No. 1
(M. F. & M.) Fernie No. 2
Coke Ovens Fernie No. 3
Coal Creek No. 4

x No agent



SPECIFIC COMMODITY TARIFFS.

Index No	C.R.C. No.	L.C.C. No.	Issuing Lines No.	Initials Issuing Road or Agent	Description	Application		On File at Stations
						From	To	
COLLIERY PLANT								
1	18	x	18+	M. F. & M.	Brattice Cloth Brattice Timber Lagging Mine Props Mining Machinery Supplies Ties	Fernie, B. C.	Coal Creek, B. C.	No. 2, 3, 4.
COAL & COKE								
2	18	x	18+	M. F. & M.	Coal and Coal Slack	Coal Creek, B.C.	Fernie, B.C.	No. 2, 3, 4.
3	W-1478	x	W-2226	C. P. R.	Coal and Coke	Alta. & B.C. points	B.C. points	No. 2-3-4.
4	W 1595	x	W 2111	C. P. R.	Coal and Coke	do.	Vancouver, B.C., etc.	No. 2-3-4.
5	W 1681	x	W 2585	C. P. R.	Coal & Coke	do.	B.C.; Alta, Sask. & Man. Points	No. 2-3-4.
6	W-1684	x	W-2587	C. P. R.	Coal and Coke	Alta. & B.C. Points	Stations in East and West Koot- enay, B.C.	No. 2-3-4.

+ Effective July 15th, 1912.

x Intrastrate tariff not on file with the Interstate Commerce Commission.

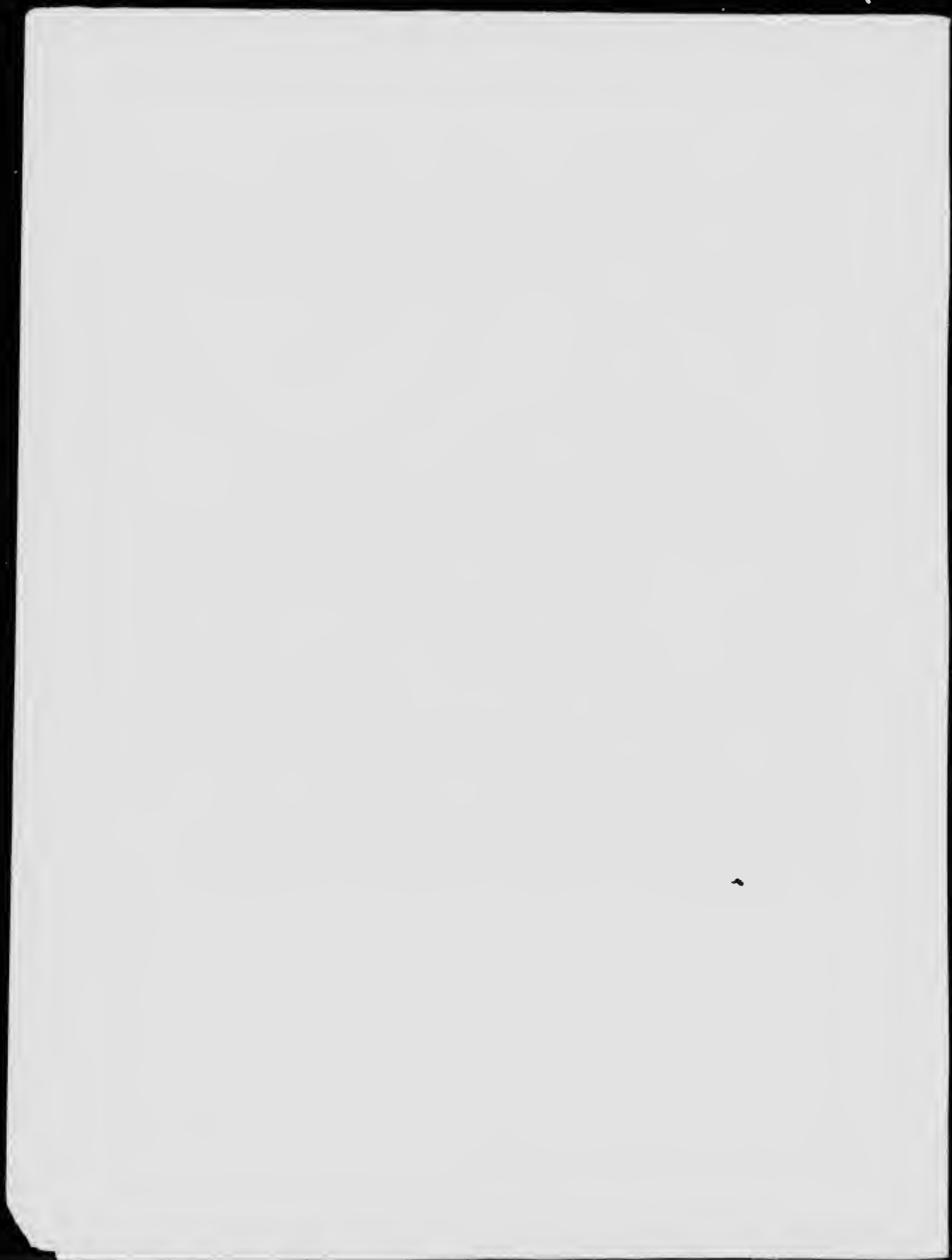
+ Effective July 15th, 1912.
 x Intrastrate tariff not on file with the Interstate Commerce Commission.

Index No	C.R.C. No.	I.C.C. No.	Locating Road or Agent	Description	Application		On File at Stations
					From	To	
7	W 170	No. 459	C. P. R.	Coal and Coke	Alta. & B.C. Points	Points on B.B. & B.C.R.; B.A. & P. Camas Prairie; G.N.R.; I. & W.N.; N.P.; S. & I.E. & I.; C.D.A. & P.D.O. O.-W.R. & N.; W. I. & M. S. & B.C.	No. 2-3-4
8	7 64	A-3330	G. N. R.	Coal and Coke	B.C. points	Points on B. & N.; B.A. & P.; C.N.S.; G.N.; I. & W.N., K.V.R., N. & F.S.; N.P.; O.-W.R. & N.; Red M.R.; S. & I.E.; O.T.R. V.V. & E.; S.P.&S.; Camas Prairie R.R.	No. 2-3-4

CLASS TARIFFS.

Index No	C.R.C. No.	I.C.C. No.	Locating Road or Agent	Description	Class	Application		On File at Stations
						From	To	
9	16	x	M. F. & M.	Switching charges on Coke	Fernie, B.C.	Coal Creek, B.C.	No. 2-3-4	
MISCELLANEOUS SCHEDULES.								
10	17	x	M. F. & M.	Switching Charges	Coke Ovens at Fernie	Terminal of C.P.R. & G.N.R.	No. 2-3-4	
11	17	x	M. F. & M.	Switching Charges on Coal and Coke	Terminal at Fernie	G.N. or C.P. Terminal at Fernie	No. 2-3-4	
12	17	x	M. F. & M.	Switching Charges	Coke Ovens at Michel	Terminal of C.P.R. & G.N.R.	No. 2-3-4	
13	17	x	M. F. & M.	Switching Charges	C.P. or G.N. Terminal at Michel	G.N. or C.P. Terminal at Michel	No. 2-3-4	

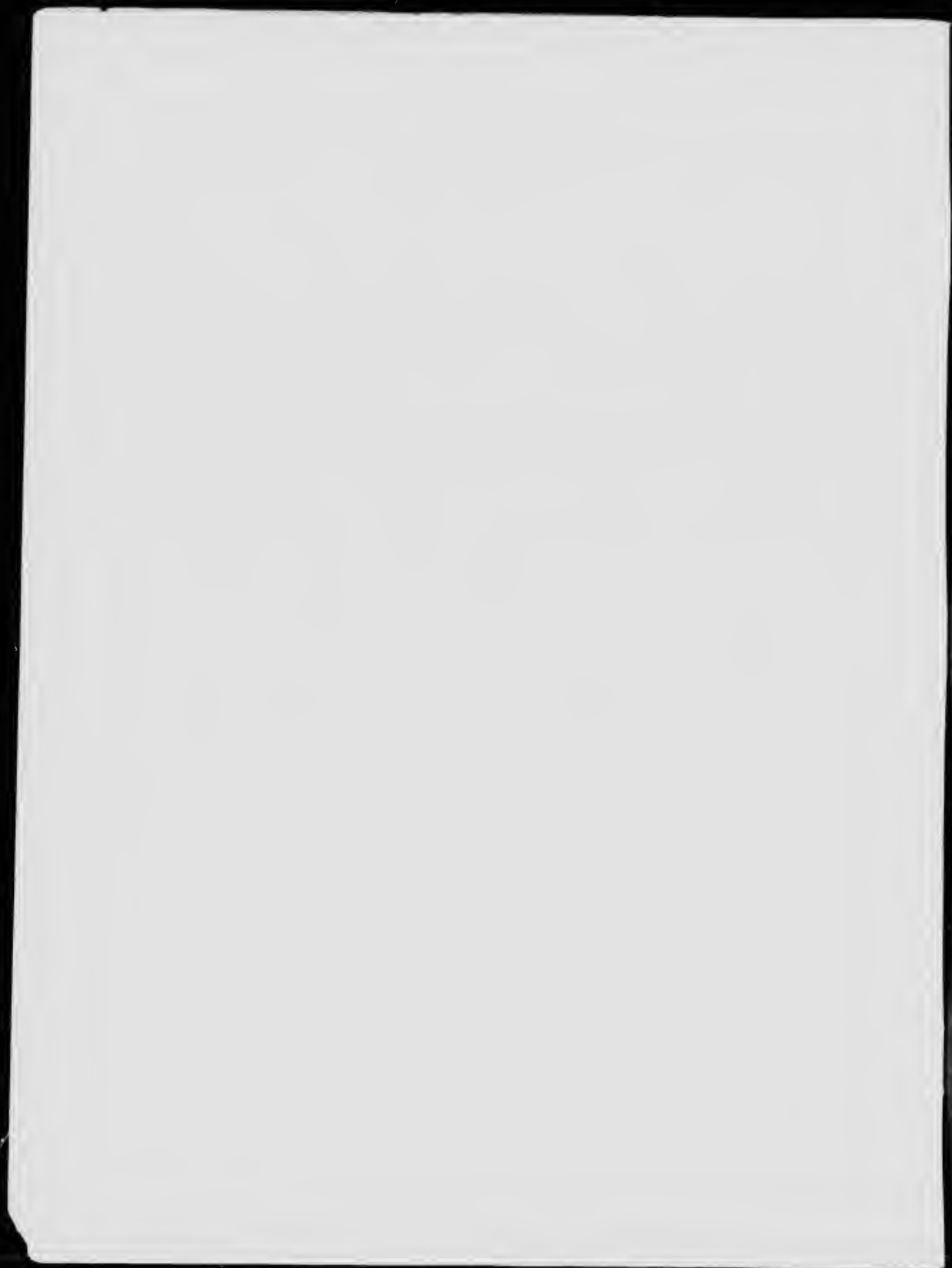
+ Effective July 15th, 1912.
 x Intrastrate tariff not on file with the Interstate Commerce Commission.



CLASS AND COMMODITY TARIFFS.

Index No.	C.R.C. No.	I.C.C. No.	Issuing Lines No.	Initials Issuing Road or Agent	Description	Application		On File at Stations
						From	To	
14	794	x	22474	G. N. R.	Class and Commodity	Man. & Ontario points	B.C. stations on G.N. and Stations on V.R. & I.	No. 2-3-4.
15	563	A-2034	20098	G. N. R.	Class and Commodity	G.N. stations, Omaha, Kansas City, etc.	A.R. & I.; C.N.S.; M.F. & M.; and B. & N. stations.	No. 2-3-4.
16	720	662	20131	G. N. R.	Class and Commodity	Eastern Canada	B.C. points	No. 2-3-4.

x Intra-state tariff not on file with the Interstate Commerce Commission.



Numerical List of M. F. & M. I. C. C. Numbers.

Issuing Line	I. C. C. No.	Tariff No.
M. F. & M.	2	19



