

**CIHM
Microfiche
Series
(Monographs)**

**ICMH
Collection de
microfiches
(monographies)**



Canadian Institute for Historical Microreproductions / Institut canadien de microreproductions historiques

© 1999

Technical and Bibliographic Notes / Notes techniques et bibliographiques

The Institute has attempted to obtain the best original copy available for filming. Features of this copy which may be bibliographically unique, which may alter any of the images in the reproduction, or which may significantly change the usual method of filming are checked below.

L'Institut a microfilmé le meilleur exemplaire qu'il lui a été possible de se procurer. Les détails de cet exemplaire qui sont peut-être uniques du point de vue bibliographique, qui peuvent modifier une image reproduite, ou qui peuvent exiger une modification dans la méthode normale de filmage sont indiqués ci-dessous.

- | | |
|------------------------------------------------------------------------------------------------------------------------------------------------------------------------------------------------------------------------------------------------------------------------------------------------------------------------------------------------------------------------------------------------------------------------------------------------------------------------------------------------------------------------------------------------------------------------------------------------------------------------------------------------------------------------------------------------------------------------------------------------------------------------------------------------------------------------------------------------------------------------------------------------------------------------------------------------------------------------------------------------------------------------------------------------------------------------------------------------------------------------------------------------------------------------------------------------------------------------------------------------------------------------------------------------------------------------------------------------------------------------------------------------------------------------------------------------------------------------------------------------------------------------------------------------------------------------------|---------------------------------------------------------------------------------------------------------------------------------------------------------------------------------------------------------------------------------------------------------------------------------------------------------------------------------------------------------------------------------------------------------------------------------------------------------------------------------------------------------------------------------------------------------------------------------------------------------------------------------------------------------------------------------------------------------------------------------------------------------------------------------------------------------------------------------------------------------------------------------------------------------------------------------------------------------------------------------------------------------------------------------------------------------------------------------------------------------------------------------------------------------------------------------------------------------------------------------------------------------------------------------------------------------------------------------------|
| <p><input type="checkbox"/> Coloured covers / Couverture de couleur</p> <p><input type="checkbox"/> Covers damaged / Couverture endommagée</p> <p><input type="checkbox"/> Covers restored and/or laminated / Couverture restaurée et/ou pelliculée</p> <p><input type="checkbox"/> Cover title missing / Le titre de couverture manque</p> <p><input type="checkbox"/> Coloured maps / Cartes géographiques en couleur</p> <p><input type="checkbox"/> Coloured ink (i.e. other than blue or black) / Encre de couleur (i.e. autre que bleue ou noire)</p> <p><input type="checkbox"/> Coloured plates and/or illustrations / Planches et/ou illustrations en couleur</p> <p><input type="checkbox"/> Bound with other material / Relié avec d'autres documents</p> <p><input type="checkbox"/> Only edition available / Seule édition disponible</p> <p><input type="checkbox"/> Tight binding may cause shadows or distortion along interior margin / La reliure serrée peut causer de l'ombre ou de la distorsion le long de la marge intérieure.</p> <p><input type="checkbox"/> Blank leaves added during restorations may appear within the text. Whenever possible, these have been omitted from filming / Il se peut que certaines pages blanches ajoutées lors d'une restauration apparaissent dans le texte, mais, lorsque cela était possible, ces pages n'ont pas été filmées.</p> <p><input checked="" type="checkbox"/> Additional comments / Commentaires supplémentaires: There are some creases in the middle of the pages. Copy filmed through mylar.</p> | <p><input type="checkbox"/> Coloured pages / Pages de couleur</p> <p><input checked="" type="checkbox"/> Pages damaged / Pages endommagées</p> <p><input type="checkbox"/> Pages restored and/or laminated / Pages restaurées et/ou pelliculées</p> <p><input checked="" type="checkbox"/> Pages discoloured, stained or foxed / Pages décolorées, tachetées ou piquées</p> <p><input type="checkbox"/> Pages detached / Pages détachées</p> <p><input type="checkbox"/> Showthrough / Transparence</p> <p><input type="checkbox"/> Quality of print varies / Qualité inégale de l'impression</p> <p><input type="checkbox"/> Includes supplementary material / Comprend du matériel supplémentaire</p> <p><input type="checkbox"/> Pages wholly or partially obscured by errata slips, tissues, etc., have been refilmed to ensure the best possible image / Les pages totalement ou partiellement obscurcies par un feuillet d'errata, une pelure, etc., ont été filmées à nouveau de façon à obtenir la meilleure image possible.</p> <p><input type="checkbox"/> Opposing pages with varying colouration or discolourations are filmed twice to ensure the best possible image / Les pages s'opposant ayant des colorations variables ou des décolorations sont filmées deux fois afin d'obtenir la meilleure image possible.</p> |
|------------------------------------------------------------------------------------------------------------------------------------------------------------------------------------------------------------------------------------------------------------------------------------------------------------------------------------------------------------------------------------------------------------------------------------------------------------------------------------------------------------------------------------------------------------------------------------------------------------------------------------------------------------------------------------------------------------------------------------------------------------------------------------------------------------------------------------------------------------------------------------------------------------------------------------------------------------------------------------------------------------------------------------------------------------------------------------------------------------------------------------------------------------------------------------------------------------------------------------------------------------------------------------------------------------------------------------------------------------------------------------------------------------------------------------------------------------------------------------------------------------------------------------------------------------------------------|---------------------------------------------------------------------------------------------------------------------------------------------------------------------------------------------------------------------------------------------------------------------------------------------------------------------------------------------------------------------------------------------------------------------------------------------------------------------------------------------------------------------------------------------------------------------------------------------------------------------------------------------------------------------------------------------------------------------------------------------------------------------------------------------------------------------------------------------------------------------------------------------------------------------------------------------------------------------------------------------------------------------------------------------------------------------------------------------------------------------------------------------------------------------------------------------------------------------------------------------------------------------------------------------------------------------------------------|

This item is filmed at the reduction ratio checked below /
Ce document est filmé au taux de réduction indiqué ci-dessous.

	10x		14x		18x		22x		26x		30x	
											<input checked="" type="checkbox"/>	
	12x		16x		20x		24x		28x		32x	

The copy filmed here has been reproduced thanks to the generosity of:

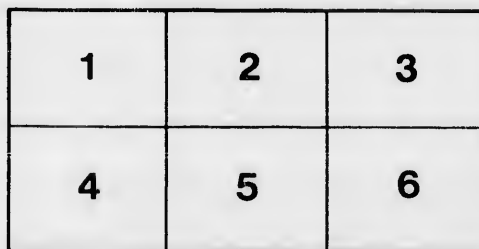
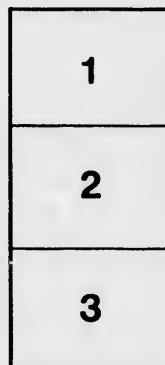
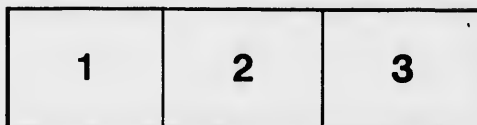
Thomas Fisher Rare Book Library,
University of Toronto Library

The images appearing here are the best quality possible considering the condition and legibility of the original copy and in keeping with the filming contract specifications.

Original copies in printed paper covers are filmed beginning with the front cover and ending on the last page with a printed or illustrated impression, or the back cover when appropriate. All other original copies are filmed beginning on the first page with a printed or illustrated impression, and ending on the last page with a printed or illustrated impression.

The last recorded frame on each microfiche shall contain the symbol \rightarrow (meaning "CONTINUED"), or the symbol ∇ (meaning "END"), whichever applies.

Maps, plates, charts, etc., may be filmed at different reduction ratios. Those too large to be entirely included in one exposure are filmed beginning in the upper left hand corner, left to right and top to bottom, as many frames as required. The following diagrams illustrate the method:



L'exemplaire filmé fut reproduit grâce à la générosité de:

Thomas Fisher Rare Book Library,
University of Toronto Library

Les images suivantes ont été reproduites avec le plus grand soin, compte tenu de la condition et de la netteté de l'exemplaire filmé, et en conformité avec les conditions du contrat de filmage.

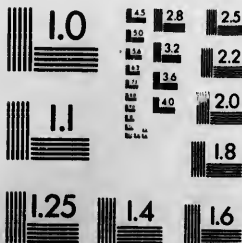
Les exemplaires originaux dont la couverture en papier est imprimée sont filmés en commençant par le premier plat et en terminant soit par la dernière page qui comporte une empreinte d'impression ou d'illustration, soit par le second plat, selon le cas. Tous les autres exemplaires originaux sont filmés en commençant par la première page qui comporte une empreinte d'impression ou d'illustration et en terminant par la dernière page qui comporte une telle empreinte.

Un des symboles suivants apparaîtra sur la dernière image de chaque microfiche, selon le cas: le symbole \rightarrow signifie "A SUIVRE", le symbole ∇ signifie "FIN".

Les cartes, planches, tableaux, etc., peuvent être filmés à des taux de réduction différents. Lorsque le document est trop grand pour être reproduit en un seul cliché, il est filmé à partir de l'angle supérieur gauche, de gauche à droite, et de haut en bas, en prenant le nombre d'images nécessaire. Les diagrammes suivants illustrent la méthode.

MICROCOPY RESOLUTION TEST CHART

(ANSI and ISO TEST CHART No. 2)



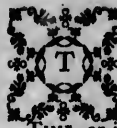
APPLIED IMAGE Inc

1653 East Main Street
Rochester, New York 14609 USA
(716) 462 - 0300 - Phone
(716) 266 - 5999 - Fax

T H E
N E W - Y E A R
V E R S E S

Of the PRINTERS LAD, who carries about the *QUEBEC*
GAZETTE to the CUSTOMERS.

J A N U A R Y 1, 1767.



THE old Year now is past and gone,
The new, its Place supplies:
Thus a new Monarch mounts the
Throne,
Soon as the old one dies.

TIME, on its early, infant Stage,
With rapid Speed begun;
Nor does it now, tho' worn with Age,
With slower Motion run.

It comes unask'd to ev'ry one,
Yet none its Flight can stay;
But swift as Thought, 'tis past and gone,
And steals itself away.

It steals our Hours and Days and Years,
And Youth, and gay Desire,
The Charms that blooming Beauty wears,
The Flames those Charms inspire.

Towers, and Cities great and fair,
With Strength and Beauty crown'd,
And Temples rising high in Air,
It moulders to the Ground:

The Sculptor's and the Painter's Art,
That seeming Life can give,
And Form, and Colour can impart,
That seems to think, and live.

The noblest Works of Human Powers
It filches in its Way,
Their most admired Parts devours,
And makes their Charms its Prey.

Ev'nen Life with all its flatt'ring Views,
It shortens as it flies,
And with incessant Strokes pursues
The Victim till it dies.

Nations, who once their Power could boast,
Whose Armies spread the Plain,
By TIME are in Oblivion lost,
And scarce their Names remain.

Thus TIME on earthly Glory preys,
And Ruin spreads around,
And to Forgetfulness conveys
Things that were once renown'd:

Yet there are happy Men whose Name,
Whose Glory ne'er shall die,
But wait on the Wings of Fame
To TIME's last Stage shall fly.

To bless the Realm those Men arose,
Sagacious, wise and just,
The Dread and Curse of Freedom's Foes,
Whose Pride is laid in Duff.

Their Praise some Poet shall rehearse,
Warm'd with celestial Fire:

Whose deathless, animated Verses
Shall wake the living Lyre.

All these, of endless Praise secure,
TIME's Ravages may see,
Their Names for ever shall endure,
Till it shall cease to be.

Not so the NEWS Boy's humble Lot,
His Services once o'er,
Are disregarded, and forgot,
And seldom thought of more.

Permit HIM then, his Labours past,
To sing in humble Lay,
E'er TIME has from Remembrance cast,
And stole their Prints away.

Assisted by no friendly Muse,
To grace his humble Strain,
The tuneful Nine wou'd all refuse
The Service with Disdain.

His own dull Head and labouring Brain,
His Verses must indite,
And his tir'd Hand the Toil sustain,
His Labours past to write.

Each Week he trotted thro' the Street,
In Spite of Heat and Cold,
Tho' Storms tempestuous on him beat,
Or Thunder o'er him roll'd.

Nor Winds, nor Rains, his Course could stay,
Till all his Task was done,
Intrepid he pursu'd his Way,
And on his Circuit run.

When all the Land in Silence sleeps;
(By Taper's glimm'ring Light)
All Night a painful Watch he keeps,
And tires his aking Sight.

With prying Eyes, and list'ning Ears,
Despising Sloth and Ease,
He culls the best he sees and hears,
With stoudious Care to please.

Whate'er remarkable he found,
Important, strange, or rare,
He to his Patrons carried round,
Nor did his Labour spare.

But more Particulars to tell,
Would turn your NEWS Boy's Brain,
And to such Length his Verses swell,
They'd ne'er be read again.

He now, with kind Acceptance, prays,
His Verses may be crown'd,
And many happy New-Year's Days,
Delight his Fiends around.

And that not one of them may know,
A Want to make him sad,
Or generous Present to bestow,
To make the NEWS Boy glad.



