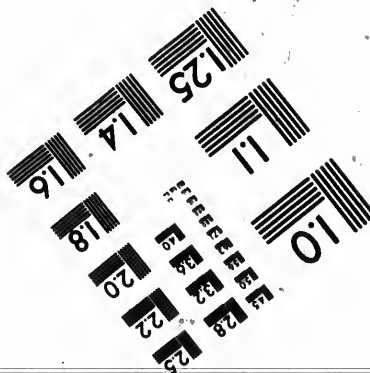
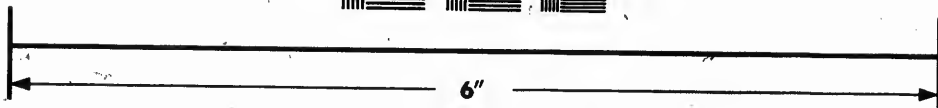
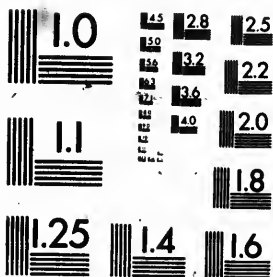


**IMAGE EVALUATION
TEST TARGET (MT-3)**



**Photographic
Sciences
Corporation**

23 WEST MAIN STREET
WEBSTER, N.Y. 14980
(716) 872-4503

**CIHM
Microfiche
Series
(Monographs)**

**ICMH
Collection de
microfiches
(monographies)**



Canadian Institute for Historical Microreproductions / Institut canadien de microreproductions historiques

© 1992

Technical and Bibliographic Notes / Notes techniques et bibliographiques

The Institute has attempted to obtain the best original copy available for filming. Features of this copy which may be bibliographically unique, which may alter any of the images in the reproduction, or which may significantly change the usual method of filming, are checked below.

L'Institut a microfilmé le meilleur exemplaire qu'il lui a été possible de se procurer. Les détails de cet exemplaire qui sont peut-être uniques du point de vue bibliographique, qui peuvent modifier une image reproduite, ou qui peuvent exiger une modification dans la méthode normale de filmage sont indiqués ci-dessous.

- Coloured covers/
Couverture de couleur
- Covers damaged/
Couverture endommagée
- Covers restored and/or laminated/
Couverture restaurée et/ou pelliculée
- Cover title missing/
Le titre de couverture manque
- Coloured maps/
Cartes géographiques en couleur
- Coloured ink (i.e. other than blue or black)/
Encre de couleur (i.e. autre que bleue ou noire)
- Coloured plates and/or illustrations/
Planches et/ou illustrations en couleur
- Bound with other material/
Relié avec d'autres documents
- Tight binding may cause shadows or distortion
along interior margin/
La reliure serrée peut causer de l'ombre ou de la
distorsion le long de la marge intérieure
- Blank leaves added during restoration may appear
within the text. Whenever possible, these have
been omitted from filming/
Il se peut que certaines pages blanches ajoutées
lors d'une restauration apparaissent dans le texte,
mais, lorsque cela était possible, ces pages n'ont
pas été filmées.

- Coloured pages/
Pages de couleur
 - Pages damaged/
Pages endommagées
 - Pages restored and/or laminated/
Pages restaurées et/ou pelliculées
 - Pages discoloured, stained or foxed/
Pages décolorées, tachetées ou piquées
 - Pages detached/
Pages détachées
 - Showthrough/
Transparence
 - Quality of print varies/
Qualité inégale de l'impression
 - Continuous pagination/
Pagination continue
 - Includes index(es)/
Comprend un (des) index
- Title on header taken from: /
Le titre de l'en-tête provient:
- Title page of issue/
Page de titre de la livraison
 - Caption of issue/
Titre de départ de la livraison
 - Masthead/
Générique (périodiques) de la livraison

Additional comments: /
Commentaires supplémentaires:

There are some creases in the middle of the pages.

This item is filmed at the reduction ratio checked below /
Ce document est filmé au taux de réduction indiqué ci-dessous

10X	12X	14X	16X	18X	20X	22X	24X	26X	28X	30X	32X
<input type="checkbox"/>	<input type="checkbox"/>	<input type="checkbox"/>	<input type="checkbox"/>	<input type="checkbox"/>	<input type="checkbox"/>	<input type="checkbox"/>	<input type="checkbox"/>	<input type="checkbox"/>	<input type="checkbox"/>	<input type="checkbox"/>	<input checked="" type="checkbox"/>

The copy filmed here has been reproduced thanks to the generosity of:

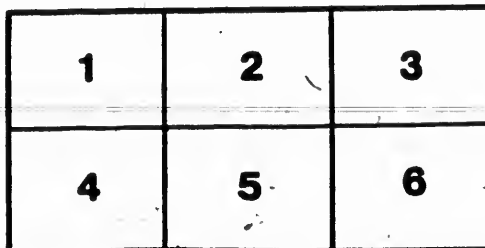
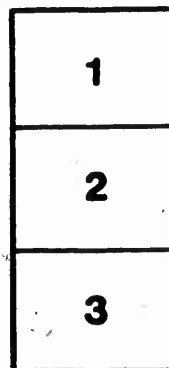
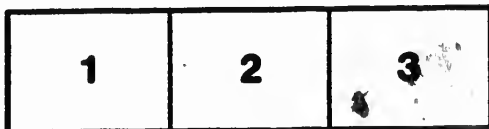
Manuscript Division,
National Archives of Canada

The images appearing here are the best quality possible considering the condition and legibility of the original copy and in keeping with the filming contract specifications.

Original copies in printed paper covers are filmed beginning with the front cover and ending on the last page with a printed or illustrated impression, or the back cover when appropriate. All other original copies are filmed beginning on the first page with a printed or illustrated impression, and ending on the last page with a printed or illustrated impression.

The last recorded frame on each microfiche shall contain the symbol \rightarrow (meaning "CONTINUED"), or the symbol ∇ (meaning "END"), whichever applies.

Maps, plates, charts, etc., may be filmed at different reduction ratios. Those too large to be entirely included in one exposure are filmed beginning in the upper left hand corner, left to right and top to bottom, as many frames as required. The following diagrams illustrate the method:



L'exemplaire filmé fut reproduit grâce à la générosité de:

Division des manuscrits,
Archives nationales du Canada

Les images suivantes ont été reproduites avec le plus grand soin, compte tenu de la condition et de la netteté de l'exemplaire filmé, et en conformité avec les conditions du contrat de filmage.

Les exemplaires originaux dont la couverture en papier est imprimée sont filmés en commençant par le premier plat et en terminant soit par la dernière page qui comporte une empreinte d'impression ou d'illustration, soit par le second plat, selon le cas. Tous les autres exemplaires originaux sont filmés en commençant par la première page qui comporte une empreinte d'impression ou d'illustration et en terminant par la dernière page qui comporte une telle empreinte.

Un des symboles suivants apparaîtra sur la dernière image de chaque microfiche, selon le cas: le symbole \rightarrow signifie "A SUIVRE", le symbole ∇ signifie "FIN".

Les cartes, planches, tableaux, etc., peuvent être filmés à des taux de réduction différents. Lorsque le document est trop grand pour être reproduit en un seul cliché, il est filmé à partir de l'angle supérieur gauche, de gauche à droite, et de haut en bas, en prenant le nombre d'images nécessaire. Les diagrammes suivants illustrent la méthode.

PREMIUMS

OFFERED BY THE

MONTREAL DISTRICT AGRICULTURAL SOCIETY.

MONTREAL DISTRICT CATTLE SHOW.

To be held at the usual place, September 17, 1829

Class No. Horses. Prem.

- Class 1. For the best draft Stallion to be kept in the District the ensuing 12 months, @16
 For the next best do. do. 12
 For the third best do. do. 8
- Class 2. For the best Stallion, calculated for the Saddle do. do. 16
 For the next best do. do. 12
 For the third best do. do. 8
- Class 3. For the best pair of Geldings, fit for the Plough, and owned by a Farmer do. do. 8
 For the next best do. do. 6
 For the third best do. do. 4
- Class 4. For the best draft Mare, kept in the District as a brood Mare, do. do. 12
 For the next best do. do. 9
 For the third best do. do. 6
- Class 5. For the best Mare, calculated for the Saddle, kept as a brood Mare, do. do. 12
 For the next best do. do. 9
 For the third best do. do. 6

Symmetry, strength, activity, spirit, thrift, hardiness and moderate size, will be the best recommendations for best Stallions.

N. B.—No Mare will be entitled to premium unless the Colt is brought forward, to enable the Judges more accurately to determine the merit of the animal as a brood Mare.

To Canadian practical Farmers only, for Best Cattle of Canadian breed

- Class 6. For the best Bull of Canadian breed, to be kept in the District for 12 months, do. do. 12
 For the next best do. do. 9
 For the third best do. do. 6
- Class 7. For the best Bull one year old do. do. 5
 For the next best do. do. 4
- Class 8. For the best pair of Steers, three years old do. do. 6
 For the next best do. do. 5
- Class 9. For the two best one year old Heifers do. do. 5
 For the two next best do. do. 4
- Class 10. For the two best two year old Heifers do. do. 6
 For the two next best do. do. 5
- Class 11. For the best Cow, do. do. 6
 For the next best do. do. 6
 For the third best do. do. 4

For Best Cattle of other than Canadian breed.

- Class 12. For the best Bull owned and kept in the District the ensuing 12 months, do. do. 12
 For the next best do. do. 9
 For the third best do. do. 6
- Class 13. For the best Bull, one year old do. do. 5
 For the next best do. do. 4
- Class 14. For the best pair of Steers, three years old, bred in the District, do. do. 6
 For the next best do. do. 5
 For the two best Heifers, one year old, bred in the District, do. do. 5
 For the two next best do. do. 4
- Class 15. For the two best Heifers, two years old do. do. 6
 For the two next best do. do. 5
- Class 17. For the best Cow, owned in the District, do. do. 8
 For the next best do. do. 6
 For the third best do. do. 4

Sheep.

- Class 18. For the best Ram, one shear, owned and to be kept in the District the next 12 months, do. do. 5
 For the next best do. do. 4
 For the third best do. do. 3
- Class 19. For the best Ram, two shears or upwards, do. do. 6
 For the next best do. do. 5
 For the third best do. do. 4
- Class 20. For the best pen of three Ewes, one shear do. do. 5
 For the next best do. do. 4
 For the third best do. do. 3
- Class 21. For the best pen of three Ewes, two shears or upwards, owned in the County, do. do. 5
 For the next best do. do. 4
 For the third best do. do. 3

Pigs.

- Class 22. For the best Boar, six months old, and not exceeding twelve months, to be kept in the District, do. do. 4
 For the next best do. do. 3
- Class 23. For the best Boar, one year old and not exceeding 3 years, do. do. 5
 For the next best do. do. 4
- Class 24. For the best Sow, having produced a litter of pigs, or evidently with young, do. do. 5
 For the next best do. do. 4
 For the third best do. do. 3

Cheese and Butter.

- Class 25. For the three best Cheeses, weighing 18 lbs. each made in the District, do. do. 5
 For the three next best do. do. 4
 For the three third best do. do. 3
- Class 26. For the best Firkin of Butter, weighing 56 lbs. do. do. 5
 For the next best do. do. 4
 For the third best do. do. 3

Woolen and Linen Cloth.

- Class 27. For the best piece of Woolen Cloth, measuring 20 yards, manufactured in the District, do. do. 8
 For the next best do. do. 6
 For the third best do. do. 4

- Class 28. For the best piece of Linen Cloth, measuring 20 yards, do. do. 8
 For the next best do. do. 6
 For the third best do. do. 4

DISTRICT PLOUGHING MATCH—To be held in October next.

- Class 29. To the best of the Ploughmen who obtained first prizes at any former District Ploughing Match, a Silver Medal or other reward, do. do. 8
- Class 30. To the person who shall plough a given quantity of land in the shortest time and in the best manner, do. do. 8
 To the next best do. do. 6
 To the third best do. do. 4
- Class 31. To the Canadian who shall plough in the best manner, do. do. 8
 To the next best do. do. 6
 To the third best do. do. 4

N. B.—Notice will be given in due time on what day in October, the Ploughing Match is to take place.

DISTRICT SHOW OF FAT HOGS, to take place on the twenty-third day of January next, at the head of the New-Market.

- Class 32. For the four heaviest and best fattened Hogs, fat in the District, do. do. 10
 For the next best do. do. 8
 For the third best do. do. 6

DISTRICT CATTLE SHOW FOR FAT ANIMALS, to take place at the Hay-Market, on Thursday the 11th day of March next.

- For Oxen and Cows or Heifers.
- Class 33. For the heaviest and best fattened Ox, owned and fattened in the District, do. do. 8
 For the next best do. do. 6
 For the third best do. do. 4
- Class 34. For the heaviest and best fattened Cow or Heifer do. do. 6
 For the next best do. do. 5
 For the third best do. do. 4
- To Canadian practical Farmers only.
- Class 35. For the heaviest and best fattened Ox, of Canadian breed, do. do. 8
 For the next best do. do. 6
 For the third best do. do. 4

Sheep.

- Class 36. For the three heaviest and best fattened Sheep, fatted in the District, do. do. 5
 For the three next best do. do. 3
 For the three third best do. do. 2

MONTREAL COUNTY CATTLE SHOW, to be held at St. Laurent on Thursday the 10th day of September next.

- Horses.
- Class 1. For the best draft Stallion, to be kept in the County the next 12 months, do. do. 12
 For the next best do. do. 10
 For the third best do. do. 8
- Class 2. For the best pair of Geldings fit for the Plough, kept by a Farmer, do. do. 6
 For the next best do. do. 5
- Class 3. For the best draft brood Mare, owned in the County, do. do. 10
 For the next best do. do. 8
 For the third best do. do. 6

N. B.—Brood Mares subject to the same regulations as at the District Show.

To Canadian practical Farmers only, for Best Cattle of the Canadian breed.

- Class 4. For the best Bull of Canadian breed, to be kept in the County for 12 months, do. do. 10
 Next best do. do. 8
 Third best do. do. 6
- Class 5. For the best one year old Bull, do. do. 6
 Next best do. do. 5
- Class 6. For the best pair of Steers, do. do. 5
 Next best do. do. 4
- Class 7. For the two best one year old Heifers, do. do. 4
 Two next best, do. do. 3
- Class 8. For the two best two year old Heifers, do. do. 5
 For next best do. do. 4
- Class 9. For the best Cow, do. do. 6
 Next best, do. do. 5
 Third best, do. do. 4

Best Cattle, other than Canadian breed.

- Class 10. For the best Bull, owned and kept in the County next 12 months, do. do. 10
 Next best do. do. 8
 Third best do. do. 6
- Class 11. For the best one year old Bull, do. do. 6
 Next best do. do. 5
- Class 12. For the best pair of Steers, bred in the County, do. do. 5
 Next best do. do. 4
- Class 13. For the two best one year old Heifers, bred in the County, do. do. 5
 Next best do. do. 4
- Class 14. For the two best two year old Heifers, do. do. 5
 Next best do. do. 4
- Class 15. For the best Cow, owned in the County, do. do. 6
 Next best do. do. 5
 Third best do. do. 4

Sheep.

- Class 16. For the best Ram, one shear, bred in the County, do. do. 4
 Next best do. do. 3
 Third best do. do. 2

- Class 17. For the best Ram, two shears or upwards, owned in the County, do. do. 5
 Next best do. do. 4
 Third best do. do. 3

- Class 18. For the best pen of three Ewes, one shear, bred in the County, do. do. 4
 Next best do. do. 3
 Third best do. do. 2

- Class 19. For the best pen of three Ewes, two shears, or upwards, owned in the County, do. do. 5
 Next best do. do. 4
 Third best do. do. 3

Pigs.

- Class 20. For the best Boar, six months old, and not exceeding twelve months, do. do. 4
 Next best do. do. 3
- Class 21. For the best Boar, twelve months old, and not exceeding three years, do. do. 4
 Next best do. do. 3
- Class 22. For the best Sow, having produced a litter of Pigs, or evidently with young, do. do. 4
 Next best do. do. 3
 Third best do. do. 2

Cheese and Butter.

- Class 23. For the two best Cheeses, weighing 18 lbs. each, made in the County, do. do. 5
 Next best do. do. 4
 Third best do. do. 3
- Class 24. For the best Firkin of Butter, weighing 56 lbs. made in the County, do. do. 5
 Next best do. do. 4
 Third best do. do. 3

Woolen and Linen Cloth.

- Class 25. For the best piece of Woolen Cloth, measuring 20 yards, manufactured in the County, do. do. 5
 Next best do. do. 4
 Third best do. do. 3
- Class 26. For the best piece of Linen Cloth, measuring 20 yards, do. do. 3
 Next best do. do. 2
 Next best do. do. 1

N. B.—The object of the Society in offering premiums for STEERS, is to determine the comparative merit of the different breeds, particularly in respect to early maturity. Inquiry will therefore be made into the mode of feeding, &c. &c.

Premiums offered for GRAIN and GREEN CROPS.

- Class 27. For the best field of Wheat, not less than four Acres, do. do. 10
 For the 2d best, do. do. 8
 For the 3d best, do. do. 6
- Class 28. For the best do. of Barley, do. do. 8
 For the 2d best, do. do. 6
 For the 3d best, do. do. 4
- Class 29. For the best do. of Oats, do. do. 8
 For the 2d best, do. do. 6
 For the 3d best, do. do. 4
- Class 30. For the best do. of Peas, do. do. 6
 For the 2d best, do. do. 4
 For the 3d best, do. do. 3
- Class 31. For the best do. of Indian Corn, not less than two Acres, do. do. 6
 For the 2d best, do. do. 4
 For the 3d best, do. do. 3
- Class 32. For the best do. of Potatoes, not less than four Acres, do. do. 10
 For the 2d best, do. do. 8
 For the 3d best, do. do. 6
- Class 33. For the best do. of Mangle Wurtele, not less than two Acres, do. do. 6
 For the 2d best, do. do. 4
 For the 3d best, do. do. 3

To Canadian practical Farmers only.

- Class 35. For the best field of Wheat, not less than three Arpents, do. do. 10
 For the 2d best, do. do. 8
 For the 3d best, do. do. 6
- Class 36. For the best do. of Barley, do. do. 8
 For the 2d best, do. do. 6
 For the 3d best, do. do. 4
- Class 37. For the best do. of Oats, do. do. 8
 For the 2d best, do. do. 6
 For the 3d best, do. do. 4
- Class 38. For the best do. of Peas, do. do. 6
 For the 2d best, do. do. 4
 For the 3d best, do. do. 3
- Class 39. For the best do. of Indian Corn, not less than two Arpents, do. do. 6
 For the 2d best, do. do. 4
 For the 3d best, do. do. 3
- Class 40. For the best do. of Potatoes, not less than three Arpents, do. do. 10
 For the 2d best, do. do. 8
 For the 3d best, do. do. 6
- Class 41. For the best do. of Flax, not less than one Arpent, do. do. 4
 For the 2d best, do. do. 3
- Class 42. To the Canadian who shall have his Farm and stock generally in the best condition, do. do. 10
 To the next best do. do. 8
- Class 43. To the Canadian who shall have the greatest quantity of Land in the best state of Summer Fallow, do. do. 6
 To the next best do. do. 4

N. B.—All claimants for Premiums on GRAIN and GREEN CROPS, well managed FARMS and SUMMER FALLOW, to serve a notice on the Secretary, on or before the 30th of JUNE next.

All Animals exhibited at the DISTRICT or COUNTY SHOWS, to be on the ground at ELEVEN o'clock, A. M.

All Candidates for Premiums to be subject to the Society's general rules and regulations, and whose doubts may arise, the MANAGING COMMITTEE shall decide.

By order, WM. EVANS,
Secretary.

Montreal, 30th April, 1829.

