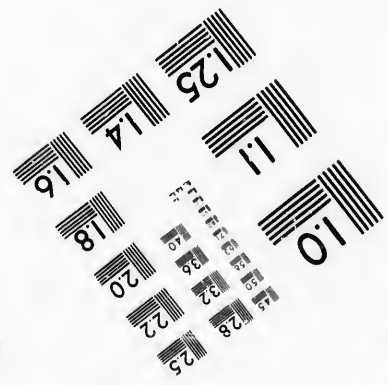
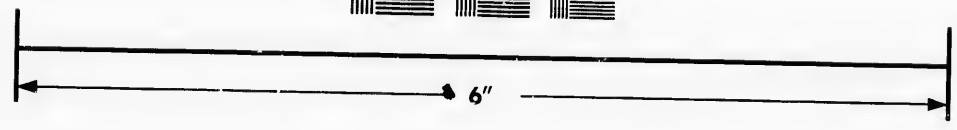
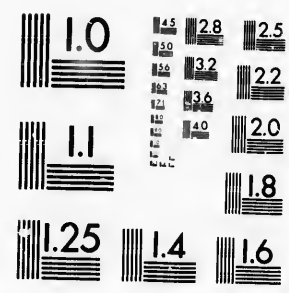


**IMAGE EVALUATION  
TEST TARGET (MT-3)**



**Photographic  
Sciences  
Corporation**

23 WEST MAIN STREET  
WEBSTER, N. Y. 14580  
(716) 872-4503



**CIHM/ICMH  
Microfiche  
Series.**

**CIHM/ICMH  
Collection de  
microfiches.**



Canadian Institute for Historical Microreproductions / Institut canadien de microreproductions historiques



**© 1986**

Technical and Bibliographic Notes/Notes techniques et bibliographiques

The Institute has attempted to obtain the best original copy available for filming. Features of this copy which may be bibliographically unique, which may alter any of the images in the reproduction, or which may significantly change the usual method of filming, are checked below.

L'Institut a microfilmé le meilleur exemplaire qu'il lui a été possible de se procurer. Les détails de cet exemplaire qui sont peut-être uniques du point de vue bibliographique, qui peuvent modifier une image reproduite, ou qui peuvent exiger une modification dans la méthode normale de filmage sont indiqués ci-dessous.

- |  |  |
|--|--|
| <input type="checkbox"/> Coloured covers/<br>Couverture de couleur   | <input type="checkbox"/> Coloured pages/<br>Pages de couleur   |
| <input type="checkbox"/> Covers damaged/<br>Couverture endommagée  | <input type="checkbox"/> Pages damaged/<br>Pages endommagées   |
| <input type="checkbox"/> Covers restored and/or laminated/<br>Couverture restaurée et/ou pelliculée  | <input type="checkbox"/> Pages restored and/or laminated/<br>Pages restaurées et/ou pelliculées  |
| <input type="checkbox"/> Cover title missing/<br>Le titre de couverture manque   | <input checked="" type="checkbox"/> Pages discoloured, stained or foxed/<br>Pages décolorées, tachetées ou piquées   |
| <input type="checkbox"/> Coloured maps/<br>Cartes géographiques en couleur   | <input type="checkbox"/> Pages detached/<br>Pages détachées  |
| <input type="checkbox"/> Coloured ink (i.e. other than blue or black)/<br>Encre de couleur (i.e. autre que bleue ou noire)   | <input checked="" type="checkbox"/> Showthrough/<br>Transparence   |
| <input type="checkbox"/> Coloured plates and/or illustrations/<br>Planches et/ou illustrations en couleur  | <input type="checkbox"/> Quality of print varies/<br>Qualité inégale de l'impression   |
| <input type="checkbox"/> Bound with other material/<br>Relié avec d'autres documents   | <input type="checkbox"/> Includes supplementary material/<br>Comprend du matériel supplémentaire   |
| <input type="checkbox"/> Tight binding may cause shadows or distortion<br>along interior margin/<br>La reliure serrée peut causer de l'ombre ou de la<br>distorsion le long de la marge intérieure   | <input type="checkbox"/> Only edition available/<br>Seule édition disponible   |
| <input type="checkbox"/> Blank leaves added during restoration may<br>appear within the text. Whenever possible, these<br>have been omitted from filming/<br>Il se peut que certaines pages blanches ajoutées<br>lors d'une restauration apparaissent dans le texte,<br>mais, lorsque cela était possible, ces pages n'ont<br>pas été filmées. | <input type="checkbox"/> Pages wholly or partially obscured by errata<br>slips, tissues, etc., have been refilmed to<br>ensure the best possible image/<br>Les pages totalement ou partiellement<br>obscurcies par un feuillet d'errata, une pelure,<br>etc., ont été filmées à nouveau de façon à<br>obtenir la meilleure image possible. |
| <input checked="" type="checkbox"/> Additional comments: / [Printed ephemera] [4] p.<br>Commentaires supplémentaires:  |  |

This item is filmed at the reduction ratio checked below/  
Ce document est filmé au taux de réduction indiqué ci-dessous.

10X	12X	14X	16X	18X	20X	22X	24X	26X	28X	30X	32X
								/			

The copy filmed here has been reproduced thanks to the generosity of:

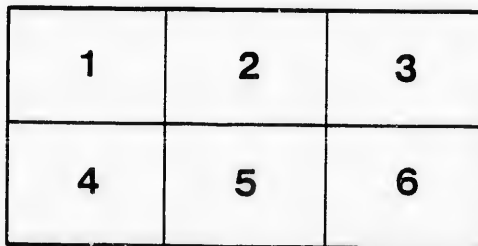
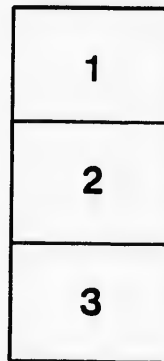
D. B. Weldon Library  
University of Western Ontario  
(Regional History Room)

The images appearing here are the best quality possible considering the condition and legibility of the original copy and in keeping with the filming contract specifications.

Original copies in printed paper covers are filmed beginning with the front cover and ending on the last page with a printed or illustrated impression, or the back cover when appropriate. All other original copies are filmed beginning on the first page with a printed or illustrated impression, and ending on the last page with a printed or illustrated impression.

The last recorded frame on each microfiche shall contain the symbol  $\rightarrow$  (meaning "CONTINUED"), or the symbol  $\nabla$  (meaning "END"), whichever applies.

Maps, plates, charts, etc., may be filmed at different reduction ratios. Those too large to be entirely included in one exposure are filmed beginning in the upper left hand corner, left to right and top to bottom, as many frames as required. The following diagrams illustrate the method:



L'exemplaire filmé fut reproduit grâce à la générosité de:

D. B. Weldon Library  
University of Western Ontario  
(Regional History Room)

Les images suivantes ont été reproduites avec le plus grand soin, compte tenu de la condition et de la netteté de l'exemplaire filmé, et en conformité avec les conditions du contrat de filmage.

Les exemplaires originaux dont la couverture en papier est imprimée sont filmés en commençant par le premier plat et en terminant soit par la dernière page qui comporte une empreinte d'impression ou d'illustration, soit par le second plat, selon le cas. Tous les autres exemplaires originaux sont filmés en commençant par la première page qui comporte une empreinte d'impression ou d'illustration et en terminant par la dernière page qui comporte une telle empreinte.

Un des symboles suivants apparaîtra sur la dernière image de chaque microfiche, selon le cas: le symbole  $\rightarrow$  signifie "A SUIVRE", le symbole  $\nabla$  signifie "FIN".

Les cartes, planches, tableaux, etc., peuvent être filmés à des taux de réduction différents. Lorsque le document est trop grand pour être reproduit en un seul cliché, il est filmé à partir de l'angle supérieur gauche, de gauche à droite, et de haut en bas, en prenant le nombre d'images nécessaire. Les diagrammes suivants illustrent la méthode.

LONDON PTD & LITHO CO

MICHIGAN, OHIO  
CANADIAN CIRCUIT  
EIGHTEEN  
THEATRES

CLEVELAND, CINCINNATI, BUFFALO,  
DETROIT, TORONTO,  
TOLEDO, LONDON, HAMILTON,  
WOODSTOCK, BAGINAW,  
GRAND RAPIDS, BAY CITY AND  
JACKSON.



C. J. WHITNEY. A. E. ROOTE. ONTARIO.  
LESSEE. MANAGER



W. SMITH.

E. HOLLAND.

W. S. PARTRIDGE.

SMITH & BROS.

THE  
LEADING  
SANITARY  
PLUMBERS  
AND  
HEATING  
ENGINEERS  
OF  
WESTERN  
ONTARIO.

376  
RICHMOND STREET,

LONDON.

OPPOSITE GRAND OPERA HOUSE BUILDING.

A full stock of Supplies always on hand.

TELEPHONE 538.

LADIES! THE ONLY WAY TO GET HELP IS THROUGH THE "FREE PRESS" WANT COLUMN.



**Parisian Steam Laundry**

73 & 75 DUNDAS STREET.  
BRANCH OFFICES:  
226 Dundas St. 751 Waterloo. 410 Hamilton E.d.  
280 " " 572 Pall Mall. 251 Wellington.  
310 " " 380 Richmond. 338 Ridout.  
632 " " 485

J. K. SPRY, Manager.

# HUESTON'S

**LIVERY,  
Goupe & Cab Stables**  
WELLINGTON STREET.

Finest Horses and Carriages in the City.  
OPEN DAY AND NIGHT. TELEPHONE 441.

**ROBT. HUESTON,**  
Proprietor.

H. MCKENNA,  
—FOR—

**Choice Cigars, Tobaccos**

AND PIPES.

ALWAYS OPEN .....  
..... AFTER THE OPERA.

225 DUNDAS STREET.

# RIVARD

The Leading Hatter  
and Furrier

HAS THE FINEST STOCK OF

**FURS**

IN THE CITY TO SELECT FROM.

HIS PRICES ARE RIGHT!

*Rivard*

London's Fashionable Hatter  
and Furrier,  
400 RICHMOND-ST.

## WILLIAMS' Pianos

CANADA'S FAVORITE

Cannot be excelled for touch, singing quality, delicacy and great power of tone, with highest excellence of workmanship.

ALL THE LATEST VOCAL AND INSTRUMENTAL MUSIC RECEIVED AS PUBLISHED.

Musical Instruments of all kinds, Strings and Fittings,  
AT LOWEST PRICES.

**R. S. WILLIAMS & SON,** 171 DUNDAS STREET,  
LONDON, ONT.

J. A. CRODEN, Manager.

## PROGRAMME

ONE WEEK, COMMENCING MONDAY,  
FEBRUARY 5TH.

MATINEES WEDNESDAY AND SATURDAY.

Friday, February 9th,

+ GRAND GALA NIGHT +

Testimonial Benefit to Ida Van Cortland

CANADA'S FAVORITE ACTRESS.

# Ida Van Cortland

And the Magnificent Organization of  
Players known as

TAVERNIER'S STOCK COMPANY

Aided by every requisite of Scene, Costume, Music, Dancing,  
Singing, Calcium Lights and Appointments.

Wednesday Matinee, February 7th,

THE GREAT EMOTIONAL PLAY.

# EAST LYNNE

Or the Elopement.

CAST.

Lady Isabel,.....	IDA VAN CORTLAND.
Madam Vine,.....	
Barbara Hare,.....	Daisey Beverly
Corney.....	Nellie Morgan
Joyce.....	Viola Hall
Sir Frances Levison.....	Richardson Cotton
Archibald.....	Howard Hall
Lord Mount Severn.....	Lew A. Warner
Dill.....	M. B. Streeter
Dick Hare.....	John E. Miles
Officer.....	Geo. H. Howson

SYNOPSIS.

ACT I.—Lady Isabel's arrival. ACT II.—The elopement.  
ACT III.—Retribution. ACT IV.—The New Governess.  
ACT V.—Death.

## WATCH FOR MICHAEL STROGOFF

(Programme continued on next page.)

## SOMETHING NEW.

Opera English & Canadian  
Caramels. Chocolate Creams.

VERY FINEST French Crystalized FRUITS.  
Olives in Bulk.  
.. Fresh Roquefort Cheese..

**FITZGERALD, SCANDRETT & CO.**  
169 Dundas Street.

ESTABLISHED 1831.

## H. DAVIS & SON, WATCHMAKERS AND JEWELLERS

DEALERS IN  
Watches, Clocks, Jewellery, Spectacles,  
Silver Plated Ware, &c.

170 DUNDAS ST., LONDON, ONT.

## W. T. STRONG

Dispensing  
Chemist,

184 Dundas Street,  
LONDON, - ONTARIO.

## BROWN'S

Central Shoe Store,  
145 DUNDAS ST.



We inventory Feb. 4 20th, and are determined to reduce our Stock as much as possible before that date. To do this, we have cut down prices to a figure heretofore unheard of for such quality of goods. This Great Reduction will place the best selected stock of Staple and High-Grade Shoes within the reach of all.

REMEMBER, WE KEEP NO INFERIOR OR SHODDY GOODS.

EVERY LINE OF . . .  
BOOTS, SHOES, SLIPPERS, RUBBERS, OVERSHOES,  
OVERGAINERS, LEGGINGS, MOCCASINS, ETC.,  
IS THE BEST OF ITS KIND.

Our position enables us to sell cheaper than any other shoe store in this western section; but this special Reduction cannot fail to further convince the Public, that for reliable footwear in all Standard Styles, "Brown's is undoubtedly the Cheapest."

THIS CUT-DOWN-PRICE  
—will also apply to our—  
HANDSOME AMERICAN DESIGNS IN  
LADIES' AND GENTS' DRESS SHOES,  
WALKING, SKATING AND HOCKEY BOOTS;  
Also our Complete, and unexcelled (for Style and Finish) assortment of YOUTHS', MISSES', BOYS', GIRLS' AND BABY SHOES.

NO RESERVE.  
**John S. Brown,**  
TELEPHONE 881.

IF YOU WANT THE BEST, TAKE THE "FREE PRESS." ALL THE NEWS!

—GO TO—  
**SOUTHCOTTS**  
 —FOR YOUR—  
**Overcoating**  
 —OR—  
**FALL & SUITING**  
 AND GET SATISFACTION AT  
 CLOSE PRICES.  
**361 RICHMOND STREET.**

LATEST SHAPES  
 —In American and English—  
**Spring Hats**  
 JUST OPENED.  
**GRAHAM BROS.,**  
 Leading Hatters and Furnishers.

**Wm. Stevely & Son,**  
 —THE LEADING DEALERS IN—  
**STOVES, RANGES,**  
 .. AND ..  
**HOUSE FURNISHING GOODS.**  
 OUR STOCK IS THE LARGEST.  
 OUR PRICES THE LOWEST.  
**362 RICHMOND STREET.**  
 'PHONE 452.

I-I-I-I-I-I-I-I-I-I

PRINTERS  
 LITHOGRAPHERS  
 ENGRAVERS

The \_\_\_\_\_  
**London**  
**Printing and**  
**Lithographing**  
**Co'y,** SUCCESSORS TO FREE PRESS  
 PRINTING AND LITHO.  
 DEPARTMENT'S.

OFFICE,  
 "FREE PRESS"  
 BUILDING.

BEST WORK  
 AT MODERATE  
 PRICES.

I-I-I-I-I-I-I-I-I-I

**TEGUMSEH HOUSE**  
 LONDON.



Directly opposite G.T.R. depot;  
 street railway past the doors;  
 convenient to all the wholesale  
 and retail business houses of  
 city, making it the most desir-  
 able hotel in the city; elevator,  
 and heated throughout with  
 steam.

Porter in attendance on  
 arrival of all trains.

**RATES, \$2.00 AND \$2.50**  
 PER DAY,

ACCORDING TO LOCATION.

No Extra Charge For Baggage.

**C. W. DAVIS, PROP.**

«Programme Continued.»

Wednesday Evening, Feb. 7th,

**Fanchon, the Cricket**

CAST OF CHARACTERS.

FANCHON, - - - - - IDA VAN CORTLAND  
 Father Barbeau, a rich farmer..... Lew A. Warner  
 Landry... } Twin brothers { ..... Richardson Cotton  
 Dadier... } ..... M. B. Streeter  
 Etienne ..... Geo. H. Howson  
 Pierre..... Henry Williams  
 Colin ..... John P. Smith  
 Father Caillard..... Howard Hall  
 Martineau..... F. A. Millis  
 Old Fadet..... John E. Miles  
 Mother Barbeau..... Nellie Morgan  
 Madelon..... Daisy Beverly  
 Susette..... Viola Hall  
 Annette..... Lillian Smith

SYNOPSIS.

ACT I.—The shadow dance.  
 ACT II.—St. Andoche Festival.  
 ACT III.—The Will o' the Wisp.  
 ACT IV.—A year later.

NOTE.—Incidental to this play, Specialties will be introduced in  
 Act II, by Mr. B. Streeter. LITTLE PANSY will appear between  
 Acts II, and III.

Go-morrow Night—The Wicklow Wedding.

MATINEE ON SATURDAY.

**WATCH FOR MICHAEL STROGOFF**

Tavernier Bros.....Proprietors | M. B. Streeter....Stage Manager.  
 Albert Tavernier..... Manager. | Frank Jimerson...Musical Director.  
 Frank Lee Miles..Representative. | James T. Myers...Calcium Lights.  
 F. A. Millis.....Properties.

(Programme continued on last page.)

**McLEAN'S HARDWARE**

—FOR—

**Bissell's Carpet Sweepers.**

WE CAN SHOW YOU TWELVE DIFFERENT STYLES SAME  
 AS ARE NOW DISPLAYED BY THE BISSELL COM-  
 PANY AT THE WORLD'S FAIR.

CALL AND SEE THESE GOODS

—AT—

**McLEAN'S HARDWARE,**  
**151 Dundas Street.**

**W. T. STRONG,**  
*Dispensing*  
*Chemist,*  
**184 DUNDAS ST.,**  
 LONDON, ONT.

.. FOR ..  
**Fine Etchings...**  
 —AND—  
**Engravings**  
 —TRY—  
**O. B. GRAVES,**  
 222 DUNDAS STREET.



**BRENER BROS.**  
 LONDON, ONT.

FOR SALE AT  
**JOE RANKIN'S**

.... OPPOSITE MASONIC TEMPLE.

**GLOVES**  
— IN —  
**SILK & KID**  
— IN —  
18 to 30 inch,  
IN ALL THE NEW SHADES.

OPERA  
FANS

**EVENING GOODS**

*A. Rolfe*

OPERA  
HOSE

We show the largest  
range of  
**S-I-L-K-S**  
IN THE CITY.  
OUR  
NEW **Velour Cloth**  
IS THE LATEST.  
In all the New Tints,  
With Trimming to Match.  
**FINE DRESSMAKING.**

TELEPHONE 611.

202 DUNDAS STREET.

**EDY BROS.**

The Artistic Photographers,

— RECEIVED —

**Three First Prizes**

— AND —

**DIPLOMA**

For Finest Display of Photography  
AT WESTERN FAIR, 1893.

Cabinet Photos, \$3 per doz.

**EDY BROS.**

214 DUNDAS STREET.

The **HUB**

Restaurant,

203 & 205 DUNDAS STREET.

For a NICE LUNCH after the  
Opera, go to the

**Hub Restaurant.**

Steaks, Chops, Chicken,  
Oysters, Etc.

OPEN TILL 12.00 P.M.

J. W. MARTIN, Prop.

(Late of the Martin House)

**« Programme Concluded. »**

During the evening, incidental to the stage performance,  
the ORCHESTRA of the Grand Opera House, under  
the direction of MR. FRED. L. EVANS, will  
perform the following selections

OVERTURE—"Bohemian Girl," ..... Balfe  
SELECTION—"Dorothy," ..... Celtier  
LANCERS—"Wang" (by request), ..... Boettger  
GALOP—"Comet," ..... Weingarten

The above programme subject to transposition

N. B.—The Orchestra of the Grand Opera House may be secured  
for engagements outside the theatre, by applying at or addressing the  
Box Office.

The Furniture used on stage is supplied by JOHN FERROUSON & SON,  
Furniture Manufacturers.

**NEXT + ATTRACTION**

**Robin  
Hood  
Opera  
Co. ....**

**A FINE PERFORMANCE**

is a satisfactory return  
for your money, but when  
you can get from us a  
superior quality of Coal  
or Wood at the same price  
you would pay for an in-  
ferior quality, it is even  
more satisfactory. When  
in need of "warmth," try  
us.

**CAMERON'S**

421 RICHMOND STREET,  
and BURWELL STREET at G. T. R.

WE call the attention of our business men to the  
PROGRAM as an advertising medium. It reaches  
the class of people whose trade you want, and the  
way to get that trade is to make yourself known.

**BELTON & ROOTE,**

BILL POSTING,  
DISTRIBUTING  
...AND...

GENERAL ADVERTISING AGENTS

Control all the Bill Boards and Dead Walls through-  
out the City. Population of City, 40,000.

All orders for Bill Posting, Distributing, Card  
Tacking, and General Advertising for  
Western Ontario will receive  
prompt attention.

OFFICE: BOX OFFICE, OPERA HOUSE.

**Roses, Carnations,**

**Palms,**

**Ferns, Bulbs,**

**J. GAMMAGE & SONS,**

218 Dundas Street.

**INDIAN... TEA IMPORTING HOUSE.**  
**CEYLON**

NEW BLENDS, DELICIOUS AND ECONOMICAL, AT MODERATE PRICES.

"English Breakfast," "Five o'clock Tea," & "Club House" Blends.  
60c. 50c. 45c.

These Blends are standard selections of choice Teas. Highly recommended to  
families for their fine quality and economical properties.

**S. FUGE,**

— IMPORTER OF —  
**CHOICE TEAS**  
TELEPHONE 858.

212 Dundas St.  
LONDON.



