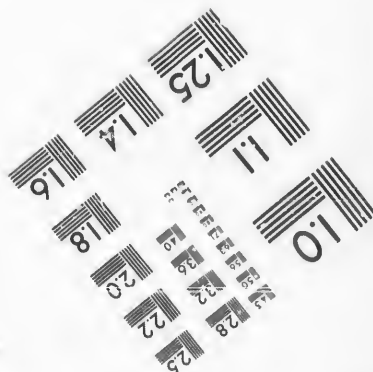
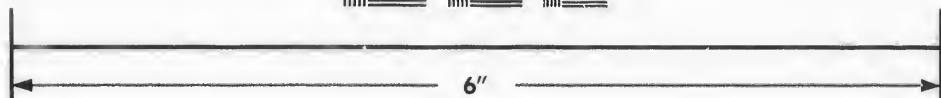
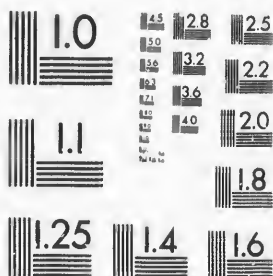


IMAGE EVALUATION  
TEST TARGET (MT-3)



Photographic  
Sciences  
Corporation

23 WEST MAIN STREET  
WEBSTER, N.Y. 14580  
(716) 872-4563

15 28 25  
20 32 22  
8

**CIHM/ICMH  
Microfiche  
Series.**

**CIHM/ICMH  
Collection de  
microfiches.**



Canadian Institute for Historical Microreproductions / Institut canadien de microreproductions historiques

10

**© 1987**

Technical and Bibliographic Notes/Notes techniques et bibliographiques

The Institute has attempted to obtain the best original copy available for filming. Features of this copy which may be bibliographically unique, which may alter any of the images in the reproduction, or which may significantly change the usual method of filming, are checked below.

L'Institut a microfilmé le meilleur exemplaire qu'il lui a été possible de se procurer. Les détails de cet exemplaire qui sont peut-être uniques du point de vue bibliographique, qui peuvent modifier une image reproduite, ou qui peuvent exiger une modification dans la méthode normale de filmage sont indiqués ci-dessous.

Coloured covers/  
Couverture de couleur

Coloured pages/  
Pages de couleur

Covers damaged/  
Couverture endommagée

Pages damaged/  
Pages endommagées

Covers restored and/or laminated/  
Couverture restaurée et/ou pelliculée

Pages restored and/or laminated/  
Pages restaurées et/ou pelliculées

Cover title missing/  
Le titre de couverture manque

Pages discoloured, stained or foxed/  
Pages décolorées, tachetées ou piquées

Coloured maps/  
Cartes géographiques en couleur

Pages detached/  
Pages détachées

Coloured ink (i.e. other than blue or black)/  
Encre de couleur (i.e. autre que bleue ou noire)

Showthrough/  
Transparence

Coloured plates and/or illustrations/  
Planches et/ou illustrations en couleur

Quality of print varies/  
Qualité inégale de l'impression

Bound with other material/  
Relié avec d'autres documents

Includes supplementary material/  
Comprend du matériel supplémentaire

Tight binding may cause shadows or distortion along interior margin/  
La reliure serrée peut causer de l'ombre ou de la distorsion le long de la marge intérieure

Only edition available/  
Seule édition disponible

Blank leaves added during restoration may appear within the text. Whenever possible, these have been omitted from filming/  
Il se peut que certaines pages blanches ajoutées lors d'une restauration apparaissent dans le texte, mais, lorsque cela était possible, ces pages n'ont pas été filmées.

Pages wholly or partially obscured by errata slips, tissues, etc., have been refilmed to ensure the best possible image/  
Les pages totalement ou partiellement obscurcies par un feuillet d'errata, une pelure, etc., ont été filmées à nouveau de façon à obtenir la meilleure image possible.

Additional comments:/  
Commentaires supplémentaires:

This item is filmed at the reduction ratio checked below/  
Ce document est filmé au taux de réduction indiqué ci-dessous

10X	12X	14X	16X	18X	20X	22X	24X	26X	28X	32X
						✓				

The copy filmed here has been reproduced thanks to the generosity of:

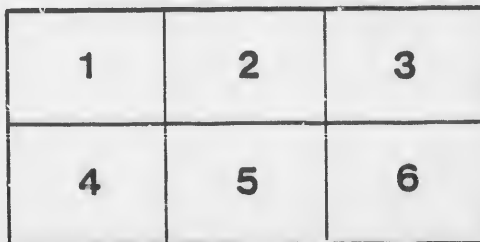
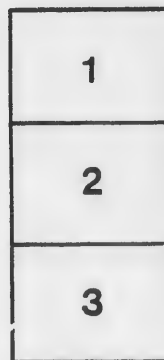
D. B. Weldon Library  
University of Western Ontario  
(Regional History Room)

The images appearing here are the best quality possible considering the condition and legibility of the original copy and in keeping with the filming contract specifications.

Original copies in printed paper covers are filmed beginning with the front cover and ending on the last page with a printed or illustrated impression, or the back cover when appropriate. All other original copies are filmed beginning on the first page with a printed or illustrated impression, and ending on the last page with a printed or illustrated impression.

The last recorded frame on each microfiche shall contain the symbol  $\rightarrow$  (meaning "CONTINUED"), or the symbol  $\nabla$  (meaning "END"), whichever applies.

Maps, plates, charts, etc., may be filmed at different reduction ratios. Those too large to be entirely included in one exposure are filmed beginning in the upper left hand corner, left to right and top to bottom, as many frames as required. The following diagrams illustrate the method:



L'exemplaire filmé fut reproduit grâce à la générosité de:

D. B. Weldon Library  
University of Western Ontario  
(Regional History Room)

Les images suivantes ont été reproduites avec le plus grand soin, compte tenu de la condition et de la netteté de l'exemplaire filmé, et en conformité avec les conditions du contrat de filmage.

Les exemplaires originaux dont la couverture en papier est imprimée sont filmés en commençant par le premier plat et en terminant soit par la dernière page qui comporte une empreinte d'impression ou d'illustration, soit par le second plat, selon le cas. Tous les autres exemplaires originaux sont filmés en commençant par la première page qui comporte une empreinte d'impression ou d'illustration et en terminant par la dernière page qui comporte une telle empreinte.

Un des symboles suivants apparaîtra sur la dernière image de chaque microfiche, selon le cas: le symbole  $\rightarrow$  signifie "A SUIVRE", le symbole  $\nabla$  signifie "FIN".

Les cartes, planches, tableaux, etc., peuvent être filmés à des taux de réduction différents. Lorsque le document est trop grand pour être reproduit en un seul cliché, il est filmé à partir de l'angle supérieur gauche, de gauche à droite, et de haut en bas, en prenant le nombre d'images nécessaire. Les diagrammes suivants illustrent la méthode.

No 12

VOTERS' LIST

— OF THE —

MUNICIPALITY

— OF —

LONDON WEST

— FOR —

THE YEAR 1885.

LONDON, ONTARIO:

THOMAS COFFEY, BOOK AND JOB PRINTER

1895.

*Correct*

*Received  
Aug 17 1885  
J.P.*

**M**

Co

Pe

j

j

j

j

# VOTERS' LIST

—OF THE—

## MUNICIPALITY OF LONDON WEST

### FOR 1885.

#### POLLING SUB-DIVISION NO. 1.

Comprising the Whole of the Village North of Blackfriars and Paul Streets.

#### PART FIRST.

Persons entitled to vote at both Municipal Elections and Elections to the Legislative Assembly.

No.	Name.	Situation.	Asses't.
5	Armstrong C B, o.....	pt 2 n Blackfriars..	1000
15	Barham Thomas, o.....	10 n Blackfriars..	900
31	Bartlett George, o.....	23 s Ann..	250
53	Bowman John, o.....	44, 45 n Ann..	300
79	Boon John, o.....	.67 w John..	325
138	Borland David, o.....	4 n Saunby..	400
140	Bailey William, t.....	7 e Irvine..	275
158	Becher Henry C. R, o.....	Island..	600
j 179	Broadway N, o.....	pt 17 w Wharnclyff..	1500
j 7	Campbell James, t.....	4 5 n Blackfriars..	1000
18	Crockett Charles, t.....	pt 13 n Blackfriars..	275
82	Crockett John, t.....	pt 70 w John..	325
88	Calver George, o.....	.75 e William..	900
113	Collins John, o.....	.2 n Oxford..	350
135	Clarke Henry, o.....	pt 20 n Saunby..	200
148	Charlesworth George, o.....	pt 6 e Wharnclyff..	375
j 151	Cushing William, jr., t.....	pt 16 e Wharnclyff..	800
151	Cushing William, sr., o.....	pt 16 e Wharnclyff..	800
j 16	Dell William H., t.....	11 n Blackfriars..	525
94	Daniels James, jr., t.....	pt 80 e William..	200
93	Daniel James, sr., o.....	.80 e William..	200

## LONDON WEST VOTERS' LIST.

No.	Name.	Situation.	Asses't.
	189 Davidson Thomas, o.....	3 n Saunby..	525
j	175 Daykin Calvert T., t.....	pt 17 s Oxford..	550
	3 Evans John, t.....	pt 2 n Blackfriars..	350
j	45 Edwards John, t.....	35, 36 s Ann..	650
	149 Elson Wm., o.....	pt 16 e Wharnclyff..	650
j	152 Essery Matthew, t.....	2 n Mill..	700
	33 Fawkes George, o.....	25 s Ann..	550
j	84 Fowler Joseph, t.....	71 w John..	550
	164 Fernley George, o.....	pt 1 w Wharnclyff..	1500
	177 Fowler William R., t.....	pt 17 w Wharnclyff..	200
j	178 Fowler Thomas, t.....	pt 17 w Wharnclyff..	550
	44 Gibson Robert, o.....	pt 34 s Ann..	450
j	70 Gibson Samuel, o.....	57, 58, 59 n Queen..	600
	89 Greenway William H., o.....	76 e William..	375
j	127 Gillespie Robert, o.....	6 s Saunby..	425
	133 Gillespie Charles, t.....	15, 16 s Saunby..	425
j	142 Grant Peter, t.....	1, 2 n Saunby..	550
j	142 Grant James E., o.....	1, 2 n Saunby..	550
	152 Gammage James, o.....	2 n Mill..	700
j	171 Gower Charles B., t.....	pt 2 n Oxford..	1500
j	171 Gower John L., t.....	pt 2 n Oxford..	1500
	183 Glass William, o.....	7, 8, 9 n Caroline..	325
	184 Glass Samuel F., o.....	pt 17 w Wharnclyff..	550
	185 Glass Charles, o.....	pt 17 w Wharnclyff..	550
j	10 Hickson Samuel, t.....	pt 7 n Blackfriars..	475
j	13 Hayes Andrew, t.....	pt 8 n Blackfriars..	425
	36 Henley William, t.....	pt 28 s Ann..	275
j	40 Houghton Edward J., o.....	30 s Ann..	625
j	46 Hevey James, t.....	37 s Ann..	575
	67 Hall Henry, t.....	51 n Ann..	350
	79 Hudd James, t.....	67 w John..	325
	80 Hardy Edward, o.....	68 w John..	375
j	90 Henwood W. H., t.....	77 e William..	450
	95 Hayes Jeremiah, o.....	81 e William..	325
	106 Hammond Levi, o.....	5 w Gunn..	300
	131 Hoolihan James, o.....	10, 11, 12, pt 13 s Saunby..	400
j	147 Hoolihan Thomas, t.....	pt 6 e Wharnclyff..	525
	186 Hall Henry, t.....	10, 11 s Caroline..	350
	187 Hastings Thomas, t.....	2 w Wharnclyff..	300
	191 Hodgins Ralph, o.....	pt 17 w Wharnclyff..	550



LONDON WHEAT VOTERS' LIST.

No.	Name.	Situation.	Asses't
36	Irvine William, o.	pt 28 s Ann..	275
5	Johnson Henry, t.	pt 2 n Blackfriars..	1000
19	Johnson Alexander, t.	pt 13 n Blackfriars..	350
j 41	Jolly George C, o.	31 s Ann..	600
26	Kennedy Denis, t.	pt 21 s Ann..	275
64	Kenny Andrew, o.	48 n Ann..	400
j 121	Keene William E., t.	2 e Wharncliff..	725
170	Kennedy Robert, t.	pt 2 n Oxford..	200
183	Keltenback Henry, t.	7, 8, 9 n Caroline..	325
23	Leigh John, o.	pt 19 n Blackfriars..	400
38	Lighthart Thomas K, t.	pt 28, 2 <sup>o</sup> s Anu..	375
137	Lethbridge John W, o.	22, 23 n Saunby..	400
j 144	Lord John, t.	pt 4 e Saunby..	450
145	Lawrence William, o.	pt 4 e Wharncliff..	525
153	Lendmann Lewis, o.	pt 1 n Mill..	800
j 154	Lockhard Albert, t.	pt 1 n Mill..	550
157	Long George, t.	pt 16 n Mill..	250
j 161	Leigh Henry, t.	2 s Grosvenor..	500
167	Lord Robert, t.	4 n Oxford..	350
1	Murray John E., t.	pt 1 n Blackfriars..	1500
1	Murray R. S., o.	pt 1 n Blackfriars..	1500
22	Marsh William, o.	pt 19 n Blackfriars..	350
j 47	Mansfield Alfred J., t.	38 s Ann..	625
j 104	Moore William, o.	1, 2, 3 n Oxford..	850
27	McDonald Jeremiah, o.	pt 21 s Ann..	275
68	McRoberts Alexander, t.	52 s Queen..	400
68	McRoberts William, o.	52 s Queen..	400
98	McIvar William, o.	85 w William..	325
107	McLean Allen, t.	6 w Gunn..	350
159	McDonald A. J. B., o.	pt 1 w Wharncliff..	1600
163	McDonald D C, o.	pt 1 w Wharncliff..	2400
j 176	McCarthy Patrick, o.	pt 17 s Oxford..	700
181	McArthur Malcolm, o.	4, 5, 6 w Wharncliff..	345
172	Nixon Joseph, o.	3 n Oxford..	3200

## LONDON WEST VOTERS' LIST.

No.	Name.	Situation.	Asses't.
4	Patrick Charles, t.	pt 2 n Blackfriars..	250
12	Payne James, t.	pt 8 n Blackfriars..	425
12	Payne Richard, t.	pt 8 n Blackfriars..	425
27	Petch David, t.	pt 21 s Ann..	275
28	Pepper Frederick, t.	pt 21 s Ann..	375
39	Pryce William, t.	pt 28, 29, s Ann..	475
39	Pryce Walter, t.	pt 28, 29 s Ann..	475
48	Pincombe William, o.	39, s Ann..	300
99	Peters John,		
99	Peters Frederick } o,.....86 to 108 w William and e		
99	Peters William } ..Wharncliff..		2700
114	Price John, t.	7 e Grace	250
123	Platt John, o.	1, 2, 3, e Wharncliff..	650
j 125	Pook Frederick, o.	4 s Saunby..	425
146	Purdie James, o.	pt 4 e Wharncliff..	350
j 180	Palmer James, o.	pt 17 w Wharncliff..	1500
188	Paul Charles, o.	1 w Wharncliff..	300
14	Rogers James, o.	9 n Blackfriars..	600
j 69	Rupie Louis, o.	53, 54, 55 s Queen..	525
169	Rudd Charles, o.	pt 1 n Oxford..	1200
175	Ross John, o.	pt 17 s Oxford..	550
20	Sime William, o.	14 n Blackfriars..	200
j 23	Stinchcombe Alfred, t.	pt 19 n Blackfriars..	400
29	Stinchcombe John, t.	pt 21 and 22 s Ann..	350
j 62	Smith William, o.	pt 47, 56 n Ann..	475
63	Smith W., o.	pt 47 n Ann..	200
93	Scollick John, t.	pt 80 e William..	200
124	Stevens John, t.	pt 1, 2, 3 s Saunby..	350
129	Southwell William H, t.	8 s Saunby..	375
130	Stevens Thomas, o.	9 s Saunby..	375
134	Saunby Joseph D, o.	17, 18, 19, n Saunby..	300
141	Stinchcombe William, o.	5, 6 w Irvine..	600
151	Stanton Albert, o.	pt 1 n Mill..	500
155	Saunby Joseph D., o.	pt 16 n Mill..	10000
156	Saunby George, t.	pt 16 n Mill..	250
91	Tuttle Shelden, o.	78 e William..	450
j 126	Tuffield Samuel, o.	5 s Saunby..	400
132	Thomas Wilham, o.	14 s Saunby..	425
143	Tyler William, o.	pt 4 n Saunby..	200
j 111	Valentine Thomas G., t.	10, 11, n Cxford..	575

## LONDON WEST VOTERS' LIST.

5

No.	Name.	Situation.	Asses't.
j 17	Wright Gibson, o.....	12 n Blackfriars..	725
j 37	Wheaton Albert B., o.....	pt 28, 29 s Ann..	450
85	Wattam John, o.....	72 w John..	750
112	Wilkinson James, o.....	6 n Oxford..	350
119	Ware Henry, o.....	1 n Oxford..	375
j 149	Waldock Charles P., t.....	pt 16 e Wharnclyff..	650
j 169	Woodward Francis, t.....	pt 1 n Oxford..	1200
j 182	Wittaker Joseph, o.....	3 w Wharnclyff..	450
191	Wilson Thomas, t.....	pt 17 w Wharnclyff..	550
j 138	Young Josiah, t.....	4 n Saunby..	400

## PART SECOND.

Persons entitled to vote at Municipal Elections only.

No.	Name.	Situation.	Asses't.
2	Anderson Dr Mrs., o.....	pt 1 n Blackfriars..	350
8	Chivers E., t.....	pt 6 n Blackfriars..	375
189	Griffin Amelia, o.....	pt 17 w Wharnclyff..	1400
147	Hoolihan, o.....	pt 6 e Wharnclyff..	525
178	Jacobs, o.....	pt 17 w Wharnclyff..	550
6	Leake Grace, t.....	3 n Blackfriars..	750
72	Lester, o.....	61 w John..	375
83	Lindsay Martha, o.....	70 w John..	325
42	McCausland Frances, o.....	32 s Ann..	400
108	McIntyre Catherine, o.....	7 e Gunn..	300
136	McPherson Jessie, o.....	21 n Saunby..	350

## LONDON WEST VOTERS' LIST.

No.	Name.	Situation.	Asses't.
190	Nicholls Elizabeth, o. ....	pt 17 w Wharnclyff..	500
105	Phoenix S. A., t. ....	4 w Gunn..	275
107	Quinn, o. ....	6 w Gunn..	350
34	Robert Helen, t. ....	26 s Ann..	250
50	Sparkman Jane, t. ....	pt 21, 22 s Ann..	375
145	Smith Susan, t. ....	pt 4 e Wharnclyff..	525
187	Sageman E, o. ....	2 w Wharnclyff..	300
90	Whiting Mary, o. ....	77 e William..	450

---

 PART THIRD.

Persons entitled to vote at Elections to the Legislative Assembly only.  
 NONE.

**POLLING SUB-DIVISION NO. 2.**

Comprising that part of the Village lying South of Blackfriars Street and East of the Wharnclyff Highway.

**PART FIRST.**

Persons entitled to vote at both Municipal Elections and Elections to the Legislative Assembly.

No.	Name.	Situation.	Asses't.	
418	Abrams Robert, o.	a d s Kensington..	725	
j 431	Andrews Joseph, o.	22, 23, 26 n Lackey..	625	
451	Allenby John B., o.	pt 3 n Dundas..	200	
j 464	Anderson Albert, t.	6 e Centre..	575	
464	Anderson Peter, o.	6 e Centre..	575	
510	Adams William, t.	1 n Kensington..	375	
511	Axtell George, t.	2 n Kensington..	375	
j 512	Albertson Hiram, o.	3 n Kensington..	450	
j 524	Andrews David, t.	pt 10, 11 s Alexander..	500	
300	579	Adams William R., t.	6 e Wharnclyff..	375
450	414	Bison Samuel, t.	pt 4 w Centre..	250
j 419	Beith Charles, t.	b n Dundas..	750	
423	Beaton John, t.	pt 9 n Dundas..	375	
428	Burke Ulyses M., t.	pt 18 w Centre..	275	
j 446	Barrett Patrick, o.	6 s Dundas..	600	
461	Bending Abram, o.	3 e Centre..	400	
466	Bradley John G., o.	8 s Leslie..	425	
482	Brown Robert, t.	11 s Peter..	275	
484	Butler Alfred, o.	14 s Peter..	275	
j 500	Botton William, c.	2 s Blackfriars..	450	
j 509	Brodie John, o.	13, 14, 15 n Kensington..	700	
j 518	Bone James, t.	pt 5, 6 w Centre..	400	
j 582	Brazier James, t.	4 to 5 e Wharnclyff..	1400	
584	Brown Charles, t.	20 s Blackfriars..	250	
j 430	Culbert Thomas, o.	17, 19, 20, 21 w Birch..	725	
436	Cook William, t.	pt b e Wharnclyff..	225	
j 439	Chapman John, o.	15, 16, s Dundas..	750	
j 478	Collins Dennis, o.	6 e Centre..	400	
489	Collins Stephen, t.	1 s Blackfriars..	2650	
489	Collins Daniel, o.	1 s Blackfriars..	2650	
502	Chambers Archibald, t.	pt 3 s Blackfriars..	250	
504	Coffey Thomas, o.	5, 6 w Napier..	650	
523	Custance George, t.	pt 3, 4 w Centre..	220	
533	Corbishley William, t.	pt 9 w Centre..	200	
j 558	Cocney William, t.	5, 6, 7, 8 e Albion..	550	
558	Cooney Patrick, o.	5, 6, 7, 8 e Albion..	550	
576	Campbell James, o.	1, 2, 3 e Wharnclyff..	650	
j 580	Campbell Duncan, o.	14 to 17 s Blackfriars..	1300	

## LONDON WEST VOTERS' LIST.

No.	Name.	Situation.	Asses't.
424	Durvan Robert, t.....	pt k n Dundas..	375
468	Dun William, o.....	10 s Leslie..	275
497	Delay Daniel, o.....	4, 6, 7 s Blackfriars..	500
j 501	Donaghy William, o.....	pt 3 s Blackfriars..	425
j 535	Donaghy Andrew, o.....	8 w Centre..	600
j 554	Donaghy Thomas, o.....	5, 6 e Albion..	500
j 566	Dark Matthew, o.....	3, 4 w Albion..	650
j 595	Dutton William, o.....	pt 1 s Blackfriars..	375
457	Emigh Henry, o.....	pt 5 e Centre..	2000
480	Elliott Edward, o.....	8 n Leslie..	350
526	Ellis James, o.....	12 s Alexander..	375
528	Egleton Thomrs, o.....	pt 9 n Alexander..	375
450	Feeney John, t.....	pt 3 n Dundas..	250
466	Finn Henry, t.....	8 s Leslie..	425
477	Fuller David W, o.....	5 e Centre..	375
496	Flannery Jeremiah, t.....	3 s Blackfriars..	375
496	Flannery John J., o.....	3 s Blackfriars..	375
j 564	Forbes James, t.....	pt 1, 2 w Albion..	425
576	Fletcher John W., t.....	1, 2, 3 e Wharnciff..	650
j 417	Gash Robert, o.....	e s Kensington..	575
j 465	Gahan Henry, t.....	7 s Leslie..	425
467	Gorman William, o.....	9 s Leslie..	450
471	Goodacre George, o.....	14 n Cherry Ave..	375
j 476	Garrett William J., o.....	3, 4 e Centre..	675
j 531	Giddens William, o.....	1 w Centre..	560
530	Gatland Edward, o.....	pt 7 w Centre..	375
516	Gibson Charles, o.....	12 w Centre..	550
557	Gibson William, o.....	1 e Albion..	525
582	Gurd John R., o.....	pt 1 s Blackfriars..	2300
475	Hodson William, o.....	5 e Centre..	375
j 507	Hookaway Robert, o.....	9 e Napier..	559
j 540	Hutchinson Philip, t.....	pt 8 w Centre..	400
544	Hooper John T., t.....	pt 10 w Centre..	250
545	Hogg Robert, t.....	11 w Centre..	325
j 550	Hartman Michael, o.....	2 w Centre..	525
578	Hiscox Thomas, o.....	5 e Wharnciff..	325
j 591	Hobbs John, t.....	pt 2 s Blackfriars..	400

## LONDON WEST VOTERS' LIST.

9

Asses't.	No.	Name.	Situation.	Asses't.
	463	Johnson Thomas F., o.....	5 e Centre..	
375	463	Johnson Henry, o.....	5 e Centre..	650
275	485	Jewell John, o.....	15 n Peter..	300
500	j 494	Jeffries Luke, t.....	pt 1 s Blackfriars..	450
425	494	Jeffries Stephen, o.....	pt 1 s Blackfriars..	450
600	j 549	Jeffries James, t.....	pt 2 w Centre..	500
500	j 561	Jeffries Thomas, o.....	30 pt 29 w Albion..	525
650	562	Jeffries Arthur S., o.....	pt 29, 28 w Albion..	375
375	589	Johnson John L., o.....	11 s Blackfriars..	375
2000	j 516	Kelly John sr., o.....	6 e Wharncliff..	£700
350	j 547	Kelly John, jr., o.....	pt 4 w Centre..	525
375	594	Kaye Ben, t.....	pt 1 s Blackfriars..	325
375				
	j 407	Lackey John T, o.....	1 w Centre..	500
250	j 415	Lackey John, o.....	c s Kensington..	1000
425	458	Leslie Alexander, sr, o.....	pt 3, 4 e Centre..	2200
375	469	Leslie James, o.....	11, 13 n Cherry Av..	200
375	473	Leslie Alexander, jr., o.....	16 to 19 s Cherry Av..	360
375	j 527	Lively Joseph, o.....	pt 9 n Alexander..	400
425	560	Lacey Robert F., o.....	31, 32, 33 w Albion..	750
650	j 575	Lear Charles, t.....	27 e Wharncliff..	425
	j 416	Morrison Robert H., o.....	h s Kensington..	550
575	422	Milloy Daniel, t.....	pt g n Dundas..	375
425	453	Mulkera Patrick, o.....	pt 5 n Dundas..	600
450	j 455	Melburn Charles, o.....	pt 5 e Centre..	650
375	459	Minton Thomas S., o.....	1 e Centre..	600
675	479	Moore Samuel, jr., o.....	7 n Leslie..	275
560	j 486	Milroy John, t.....	16 n Peter..	425
375	488	Miller Walter, o.....	18 n Peter..	325
550	j 504	Meehan Patrick, t.....	5, 6 w Napier..	650
525	542	Moore Samuel, sr, t.....	9 w Centre..	275
2300	542	Moore George, o.....	9 w Centre..	275
	582	Moir James, o.....	4 to 9 e Wharncliff..	1400
375				
550				
400	412	McLeod Daniel, t.....	pt 4 w Centre..	250
250	448	McDonald Jerry, o.....	8 s Dundas..	850
325	j 454	McGoey Thomas, o.....	pt 6 n Dundas..	750
525	j 534	McCoy James, o.....	pt 9 w Centre..	500
325	581	McDowell John B., o.....	3 e Wharncliff..	200
400				

## LONDON WEST VOTERS' LIST.

No.	Name.	Situation.	Asses't.
408	Norrie Francis N, t.	pt 2 w Centre..	375
448	Nicholson Thomas, t.	8 s Dundas..	850
571	Nicholls William, o.	23 e Wharncliff..	600
578	Newman John, t.	5 e Wharncliff.	325
437	Oldridge Eli, t.	pt b s Dundas..	375
452	O'Mara Michael F., o.	pt 3 n Dundas..	800
j 536	O'Sullivan John, o.	2, 3 e Albion..	525
j 517	Phair Thomas H, t.	pt 5, 6 w Centre..	400
518	Phair Henry, o.	5, 6 w Centre..	400
520	Partridge Thomas, o.	3, 4 w Centre..	200
j 566	Pinnell Lawrence, t.	3, 4 w Albion..	650
570	Parr David, t.	22 e Wharncliff..	300
572	Parkinson Thomas B., t.	24 e Wharncliff..	375
411	Repp George, t.	pt 2, 3 w Centre..	375
425	Raynor Daniel, t.	pt k n Dundas..	375
426	Scarrow Morris, o.	pt 18 w Centre..	275
427	Scarrow William, o.	pt 18 w Centre..	450
457	Stevenson James M., t.	pt 5 e Centre..	2000
479	Stratfold George, t.	7 n Leslie..	275
491	Spence D. Ewitt, t.	pt 1 e Centre..	350
j 4.	Sullivan Hugh, o.	pt 1 e Centre..	425
505	Saunby Stephen, o.	7 e Napier..	375
506	Saunby William, o.	8 e Napier..	375
508	Spence William, o.	10 11 e Napier..	700
530	Shearer George, t.	7 n Alexander..	900
538	Stratfold Elizus, o.	pt 7 w Centre..	900
541	Sicily William, t.	pt 8 w Centre..	400
577	Sims James, t.	4 e Wharncliff..	925
585	Simpson John, o.	18, 19 s Blackfriars..	750
456	Tucker James, t.	pt 5 e Centre..	200
465	Treeneer George J., o.	7 s Leslie..	425
j 487	Taylor Thomas, o.	16 n Peter..	350
j 546	Turville Frederick G., t.	12 w Centre..	550
j 419	Williams Charles, o.	b s Dundas..	750
469	Wattam Joseph R., o.	2 e Centre..	650



LONDON WEST VOTERS' LIST.

11

Asses't.  
375  
850  
600  
325

No.	Name.	Situation.	Asses't.
482	Whately Edward, o.....	11 s Peter..	275
490	Wallace James C., t.....	pt 1 s Blackfriars..	250
519	Winterfield Charles, t.....	pt 3, 4 w Centre..	200
564	Ward Thomas, o.....	pt 1, 2 w Albion..	425
565	Ward John P., o.....	pt 1, 2 w Albion..	425
567	Ward Richard, o.....	pt 5 w Albion..	300
568	Ward Joseph, o.....	pt 5, 6 w Albion..	275
579	Weir Robert, o.....	4 e Wharnclyff..	325
587	Wallace Peter, t.....	pt 13 s Blackfriars..	400
593	Woodward Robert., t.....	pt 1 s Blackfriars..	500

375  
800  
525

400  
400  
200  
650  
300  
375

PART SECOND.

Persons entitled to vote at Municipal Elections only.

No.	Name.	Situation.	Asses't.
481	Bolton Jessie, o.....	9, 10 n Leslie..	350

375  
375

530	Darch Mary, o.....	7 n Alexander..	300
536	Drummond Elizabeth, o.....	7 w Centre..	450

574	Hill Elizabeth, o.....	26 e Wharnclyff..	425
-----	------------------------	-------------------	-----

275  
450  
2000  
275  
350  
425  
375  
375  
700  
300  
300  
400  
325  
750

532	Keast Lydia, t.....	2 w Centre..	500
-----	---------------------	--------------	-----

532	Metcalf Mary, o.....	2 w Centre..	500
569	Mann Mary, o.....	pt 6 w Albion..	300

580	Quinn B., o.....	1, 2 e Wharnclyff..	450
-----	------------------	---------------------	-----

409	Rothwell Caroline F., t.....	pt 2, 3 w Centre..	375
-----	------------------------------	--------------------	-----

200  
425  
350  
550

588	Tillman A., o.....	12, 13 s Blackfriars..	1550
-----	--------------------	------------------------	------

498	Weanor Mary, o.....	5 s Blackfriars..	350
-----	---------------------	-------------------	-----

PART THIRD.

Persons entitled to vote at Elections to the Legislative Assembly only.

NONE.

750  
650

**POLLING SUB-DIVISION NO. 3.**

Comprising that part of the Village lying South of Paul Street and West of the Wharnclyff Highway.

**PART FIRST.**

Persons entitled to vote at both Municipal Elections and Elections to the Legislative Assembly.

No.	Name.	Situation.	Asses't.
	219 Armitage Samuel S., o.....	13 n Walker..	
j	240 Anderson George A., o.....	39, 40 s Charles..	600
	257 Ackland John, o.....	67, 68 69 n Charles..	350
j	308 Arbuckle William, t.....	pt c, 1 s Beech..	450
	193 Burns Patrick, t.....	1, 2 w Wharnclyff..	600
	231 Barry Patrick, o.....	27 n Walker..	500
	301 Bates William H, t.....	pt 11, 12 w Wharnclyff..	400
	302 Boston Alexander, t.....	pt 11, 12 w Wharnclyff..	400
	315 Bartram William H, o.....	7 to 11 s Beech..	1500
	317 Black John B, t.....	pt 1 n Beech..	375
	320 Bartley Alexander, o.....	3 n Beech..	300
	325 Bonsor John, o.....	pt 9 10 n Beech..	200
j	326 Bonsor George H., o.....	pt 10, 11 n Beech..	450
	352 Bartlett Frederick, t.....	pt b s Walnut..	375
j	353 Board Thomas, o.....	1 s Walnut..	525
	360 Brooks Leonard, o.....	7 s Walnut..	325
	371 Boyle Patrick, o.....	11 n Walnut..	300
j	384 Boyd Frederick, t.....	pt 7, 8 s Walker..	400
j	192 Cathro Samuel, o.....	3, 4 w Wharnclyff..	600
	193 Clifford Lewis, o.....	1, 2 w Wharnclyff..	600
j	231 Collison Timothy, t.....	27 n Walker..	500
	276 Churcher Thomas, o.....	pt 32, 33, 34 n Oak..	600
j	359 Clarke George, o.....	6 s Walnut..	450
	371 Cockren John, t.....	11 n Walnut..	300
j	388 Comber Robert, t.....	pt 10, 11 s Walker..	400
	211 Derr John, t.....	36 to 41 s Paul..	450
j	287 Daly Dennis, o.....	11 to 17 s Oak..	2250
j	387 Douglas Robert A., t.....	pt 10 s Walker..	425
	313 Ellis Peter, o.....	5, 6 s Beech..	250
	345 Evans John C., o.....	6 n Maple..	375

LONDON WEST VOTERS' LIST.

No	Name.	Situation.	Asses't.
195	Feeings John o.....	5 s Paul..	250
200	Fox B John, t.....	14 s Paul..	200
204	Fierning John, o.....	20 to 23 s Paul..	200
258	Fitzgerald W. W., o.....	pt 17, 1st concession..	1200
286	Forward Charles, o.....	10 s Oak..	350
299	Flowers Adam, t.....	10 w Wharnclyff..	450
310	Flack William R A, t.....	pt 2 s Beech..	375
385	Fortner Frederick, t.....	pt 8 s Walker..	400
196	Glover Thomas, o.....	6 s Paul..	250
214	Glass Archibald, o.....	5, 6 w Wharnclyff..	200
237	Glass Samuel, o.....	33, 34, 35 s Charles..	200
249	Griffiths Richard, o.....	51 n Charles..	325
256	Griffiths William, o.....	65, 66 n Charles..	200
284	Ge'gor Henry, o.....	8 s Oak..	375
318	Graham James, t.....	pt 1, 2 n Beech..	375
323	Gerard William, t.....	6, 7 n Beech..	350
349	Gray George, o.....	12, 13, 14, 15 n Maple..	315
369	Gatecliff Joseph, o.....	6 n Walnut..	350
j 220	Hayes John, t.....	14 n Walker..	450
311	Hazelgrove Frederick, t.....	3 s Beech..	450
j 331	Hardy Aquilla, t.....	2, 3, 4 s Maple..	1000
331	Howard Thomas, o.....	2, 3, 4 s Maple..	200
340	Hopkins Thomas, o.....	2 n Maple..	375
341	Hodgins Minard, o.....	pt 3 n Maple..	300
354	Hutchinson Francis, t.....	pt 2 s Walnut..	450
364	Horseman John, o.....	14, 15 s Walnut..	675
j 365	Hannmond Richard, o.....	1 n Walnut..	525
380	Hadden Robert.....	4 s Walker..	
406	Hutchinson Charles. l, m, n, s, c, h, t	Chesnut street and other property.	
275	Jury Edward, o.....	59 n Oak..	200
292	Jones Robert A., o.....	4, 5 w Wharnclyff..	700
j 342	Jerman George, t.....	pt 3, 4 n Maple..	400
391	Jones Robert A., o.....	13, 14 s Walker..	320
j 393	Johnson Edward F., o.....	pt 37 Oak and Pine..	1200
225	Kennedy Dennis, o.....	19 n Walker..	350
248	Kerfoot Josiah, t.....	50 n Charles..	350
241	Kincaide John, sr., o.....	41 s Charles..	

and

ns to

os't.

600  
350  
450

600  
500  
400  
400  
1500  
375  
300  
200  
450  
375  
525  
325  
300  
400

600  
600  
500  
600  
450  
300  
400

450  
2250  
425

250  
375

## LONDON WEST VOTERS' LIST.

No.	Name.	Situation.	Asses't.
216	Laue Cornelius, t.	9, 10 w Wharnclyff..	600
289	Livingston Dugald, o	2 w Wharnclyff..	425
351	Lindsay William, t.	b s Walnut..	375
j 395	Lings John H., o.	35, 36 Oak..	1100
199	Moran Edward, o.	10, 11 s Paul..	250
j 264	Moutjoy Richard, o.	pt 17 s Walker..	800
j 265	Moutjoy Arscott, o.	pt 17 s Walker..	800
j 267	Murdock Alexander, o	30 to 35 s Walker..	1800
j 336	Mawhinney Robert, o.	10, 11 s Maple..	200
j 344	Moore John, o.	5 n Maple..	425
j 370	Morley Charles A., o.	7, 8, 9, 10 n Walnut..	200
373	M lne James, o.	13 n Walnut..	200
j 383	Moore George, t.	pt 7 s Walker..	400
j 278	McBroom Thomas, o.	1, 2 s Oak..	800
j 294	McDonald James, t.	pt 7 w Wharnclyff..	450
j 334	McKinley James, o.	8 s Maple..	250
366	McKay Joseph, t.	pt 1 n Walnut..	375
272	Nixon William, o.	52 n Oak..	225
253	O'Rourke John o.	59 n Charles..	200
297	O'Connor Charles, t.	pt 8 w Wharnclyff..	425
327	O'Callaghan Thomas, o.	12, 13 n Beech..	225
i 386	Osborne William A., t.	9 s Walker..	425
200	Purdom John, o.	15 s Paul..	200
277	Pudney William, o.	pt 32 33, 34 n Oak..	200
285	Peddle Samuel, o.	9 s Oak..	350
332	Pocock John, o.	5, 6, 7 s Maple..	500
343	Pudney Robert, t.	pt 4 n Maple..	400
343	Pudney Edward, o.	pt 4 n Maple..	400
352	Pring William, o.	b s Walnut..	375
j 394	Peters Samuel F, o.	pt 37 Oak..	1100
215	Rathburn, o.	7, 8 w Wharnclyff..	225
299	Rattery John, o.	10 w Wharnclyff..	450
328	Reidy Michael, o.	14, 15, 16 n Beech..	255
329	Ross George H, t.	pt 1 s Maple..	350
j 372	Rockett Robert S, o.	12 n Walnut..	400

LONDON WEST VOTERS' LIST.

No.	Name.	Situation.	Asses't.
j 212	Smith Conrad B., o.....	1, 2, 3 w Wharncliff..	700
224	Stanfield Joseph, t.....	18 n Walker..	450
j 295	Stanton John, o.....	7 w Wharncliff..	450
303	Smith Francis, t.....	pt 10, 11 w Wharncliff..	400
305	Smith Thomas, o.....	13 w Wharncliff..	200
308	Slater Charles B., o.....	pt C and 1 s Beech..	450
310	Stockwell Caleb o.....	2 s Beech..	750
j 322	Stinchcombe Reuben, o.....	5, 6, 7 n Beech..	675
355	Simonds Charles, t.....	pt 2 s Walnut..	360
j 356	Spry James t.....	3 s Walnut..	450
377	Sutherland Henry, t.....	A s Walker..	375
387	Sara John, o.....	pt 10 s Walker..	425
389	Sheffield Henry C.....	pt 11 s Walker..	375
j 392	Smith Walter, o.....	15, 16 to 38 s Walker..	2800
j 222	Tozer Henry, t.....	16 n Walker..	550
233	Tweed John, o.....	29 n Walker..	450
226	Tanton John, o.....	20 and 30 n Walker..	250
248	Thompson Henry, o.....	50 n Charles..	350
312	Twichen John, o.....	4 s Beech..	350
369	Tynan Patrick, t.....	6 n Walnut..	350
208	Walsh John, o.....	27, 28 s Paul..	240
220	Woods Samuel H., o.....	14 n Walker..	450
223	Wade John H., o.....	17 n Walker..	325
229	Wilson James H., o.....	23, 25, 26 n Walker..	375
252	Wheaton William, o.....	56, 57, 58 n Charles..	375
266	Weer James, o.....	19 s Walker..	300
300	Wyatt Frederick, o.....	pt 11 and 12 w Wharncliff..	400
304	Wyatt William, o.....	pt 11 and 12 w Wharncliff..	400
309	Webb Wesley, t.....	pt 2 s Beech..	375
319	Williams C. N., o.....	2 n Beech..	375
378	Wright Alfred, t.....	1 s Walker..	300
j 379	Walker John, o.....	2, 3 s Walker..	575

PART SECOND.

Persons entitled to vote at Municipal Elections only.

No.	Name.	Situation.	Asses't.
363	Ainsley, o.....	13 s Walnut..	400
280	Cooper Eliza, o.....	4 s Oak..	350

LONDON WEST VOTERS' LIST.

No.	Name.	Situation.	Asses't.
211	Friend Catherine, o.....	36 to 41 s Paul..	450
262	Leake Grace, o.....	17 s Walker..	800
198	Ryan Mary, o .....	10, 11 s Paul..	350
216	Small, o.....	9, 10 w Wharncliff..	600

PART THIRD.

Persons entitled to vote at Elections to the Legislative Assembly only.  
 NONE.

I, Thomas S. Minton, Clerk of the Municipality of London West, in the County of Middlesex, do hereby certify that parts one and three of the within list constitutes a correct list for the year 1885 of all persons appearing by the last revised Assessment Roll of the said Municipality to be entitled to vote at Elections for Members of the Legislative Assembly, and that parts one and two constitute a correct list for said year of all persons appearing by the said roll to be entitled to vote at Municipal Elections in the said Municipality; and I hereby call upon all Electors to examine the said List, and if any omissions or other errors are perceived therein, to take immediate proceedings to have the same errors corrected according to law.

Dated this 15th day of August, 1885.

T. S. MINTON,  
 Clerk of London West.

I hereby certify that the number of jurors is 131.

T. S. MINTON,  
 Clerk.

CHANDLER 19 X 1/2 V 54 DE

CAYENNE 19 X 6 V54 DE

