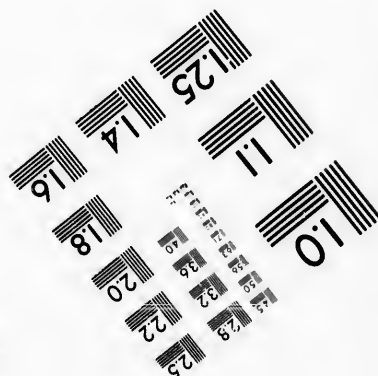
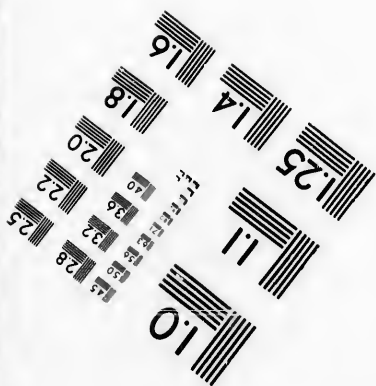
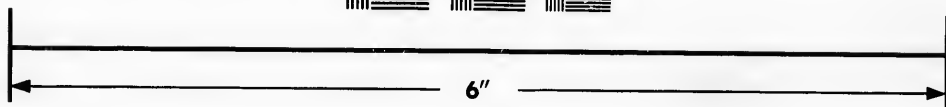
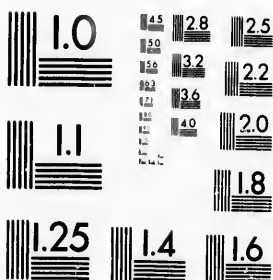


**IMAGE EVALUATION
TEST TARGET (MT-3)**



**Photographic
Sciences
Corporation**

23 WEST MAIN STREET
WEBSTER, N.Y. 14580
(716) 872-4503

**CIHM
Microfiche
Series
(Monographs)**

**ICMH
Collection de
microfiches
(monographies)**



Canadian Institute for Historical Microreproductions / Institut canadien de microreproductions historiques

© 1992

Technical and Bibliographic Notes / Notes techniques et bibliographiques

The Institute has attempted to obtain the best original copy available for filming. Features of this copy which may be bibliographically unique, which may alter any of the images in the reproduction, or which may significantly change the usual method of filming, are checked below.

L'Institut a microfilmé le meilleur exemplaire qu'il lui a été possible de se procurer. Les détails de cet exemplaire qui sont peut-être uniques du point de vue bibliographique, qui peuvent modifier une image reproduite, ou qui peuvent exiger une modification dans la méthode normale de filmage sont indiqués ci-dessous.

- Coloured covers/
Couverture de couleur
- Covers damaged/
Couverture endommagée
- Covers restored and/or laminated/
Couverture restaurée et/ou pelliculée
- Cover title missing/
Le titre de couverture manque
- Coloured maps/
Cartes géographiques en couleur
- Coloured ink (i.e. other than blue or black)/
Encre de couleur (i.e. autre que bleue ou noire)
- Coloured plates and/or illustrations/
Planches et/ou illustrations en couleur
- Bound with other material/
Relié avec d'autres documents
- Tight binding may cause shadows or distortion along interior margin/
La reliure serrée peut causer de l'ombre ou de la distorsion le long de la marge intérieure
- Blank leaves added during restoration may appear within the text. Whenever possible, these have been omitted from filming/
Il se peut que certaines pages blanches ajoutées lors d'une restauration apparaissent dans le texte, mais, lorsque cela était possible, ces pages n'ont pas été filmées.

- Coloured pages/
Pages de couleur
 - Pages damaged/
Pages endommagées
 - Pages restored and/or laminated/
Pages restaurées et/ou pelliculées
 - Pages discoloured, stained or foxed/
Pages décolorées, tachetées ou piquées
 - Pages detached/
Pages détachées
 - Showthrough/
Transparence
 - Quality of print varies/
Qualité inégale de l'impression
 - Continuous pagination/
Pagination continue
 - Includes index(es)/
Comprend un (des) index
- Title on header taken from: /
Le titre de l'en-tête provient:
- Title page of issue/
Page de titre de la livraison
 - Caption of issue/
Titre de départ de la livraison
 - Masthead/
Générique (périodiques) de la livraison

Additional comments: /
Commentaires supplémentaires:

There are some creases in the middle of the pages. Copy has manuscript annotations.

This item is filmed at the reduction ratio checked below /
Ce document est filmé au taux de réduction indiqué ci-dessous.

10X	14X	18X	22X	26X	30X
<input type="checkbox"/>	<input type="checkbox"/>	<input type="checkbox"/>	<input type="checkbox"/>	<input checked="" type="checkbox"/>	<input type="checkbox"/>
12X	16X	20X	24X	28X	32X

The copy filmed here has been reproduced thanks to the generosity of:

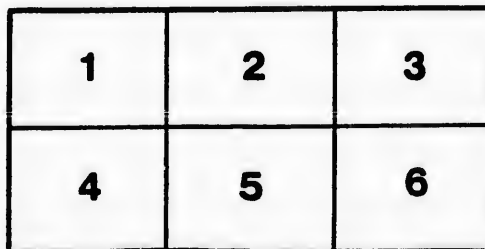
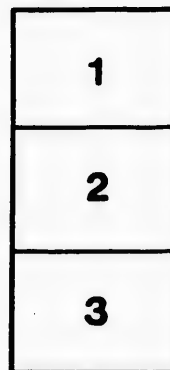
Manuscript Division,
National Archives of Canada

The images appearing here are the best quality possible considering the condition and legibility of the original copy and in keeping with the filming contract specifications.

Original copies in printed paper covers are filmed beginning with the front cover and ending on the last page with a printed or illustrated impression, or the back cover when appropriate. All other original copies are filmed beginning on the first page with a printed or illustrated impression, and ending on the last page with a printed or illustrated impression.

The last recorded frame on each microfiche shall contain the symbol \rightarrow (meaning "CONTINUED"), or the symbol ∇ (meaning "END"), whichever applies.

Maps, plates, charts, etc., may be filmed at different reduction ratios. Those too large to be entirely included in one exposure are filmed beginning in the upper left hand corner, left to right and top to bottom, as many frames as required. The following diagrams illustrate the method:



L'exemplaire filmé fut reproduit grâce à la générosité de:

Division des manuscrits,
Archives nationales du Canada

Les images suivantes ont été reproduites avec le plus grand soin, compte tenu de la condition et de la netteté de l'exemplaire filmé, et en conformité avec les conditions du contrat de filmage.

Les exemplaires originaux dont la couverture en papier est imprimée sont filmés en commençant par le premier plat et en terminant soit par la dernière page qui comporte une empreinte d'impression ou d'illustration, soit par le second plat, selon le cas. Tous les autres exemplaires originaux sont filmés en commençant par la première page qui comporte une empreinte d'impression ou d'illustration et en terminant par la dernière page qui comporte une telle empreinte.

Un des symboles suivants apparaîtra sur la dernière image de chaque microfiche, selon le cas: le symbole \rightarrow signifie "A SUIVRE", le symbole ∇ signifie "FIN".

Les cartes, planches, tableaux, etc., peuvent être filmés à des taux de réduction différents. Lorsque le document est trop grand pour être reproduit en un seul cliché, il est filmé à partir de l'angle supérieur gauche, de gauche à droite, et de haut en bas, en prenant le nombre d'images nécessaire. Les diagrammes suivants illustrent la méthode.

qu'il
cet
de vue
je
tion
nés

ript

32x

TO HIS EXCELLENCY, Sir John Colborne H.B.M.

Lieutenant Governor of the Province of Upper Canada, &c. &c. &c.—IN COUNCIL.

THE PETITION OF Samuel Brown of the Township of Oxford in the District of Johnstown in the Province of Upper Canada: HUMBLY SHEWETH:—that your Petitioner is the Son of Joseph Brown formerly of Matilda Township District of Oxford and Province aforesaid. a U. E. Loyalist.—That he has attained the full age of twenty-one years and that he has never received any Land or order for Land, from the Crown.—Wherefore your Petitioner humbly prays that your Excellency will be pleased to grant him Two Hundred Acres of the Waste Lands of the Crown, and permit of to locate the same, and take out the Deed when completed: And your Petitioner as in duty bound, will ever pray.

Samuel Brown

DISTRICT OF JOHNSTOWN. Samuel Brown of Oxford in said District, maketh oath and saith that he is the person he describes himself to be in the above Petition, and that he has not received any Land, or order for Land, from the Crown.

Sworn before me, in open Sessions, at Brockville, the 19th day of February 1833. Samuel Brown

DISTRICT OF JOHNSTOWN. David Brown of Matilda in said District, maketh oath and saith, that he is the person he describes himself to be in the above petition, and that he has not received any Land, or order for Land, from the Crown, as this deponent verily believes.

Sworn before me, in open Sessions, at Brockville, in said District, this 19th day of February 1833. N. Brown

DISTRICT OF JOHNSTOWN. We David Macdonald Esquire, Chairman, and James Jessup Clerk of the Peace, certify, that Samuel Brown personally appeared at the General Quarter Sessions of the peace, this day, and is recognized by the Magistrates to be the son of Joseph Brown formerly of the township of Matilda now of Oxford who retained his loyalty during the late War, without suspicion of aiding or assisting the enemy, and that the said Joseph Brown did his duty in defence of the province during said War.

Dated at the Court-House in said District this 19th day of February 1833.

David Macdonald Esquire, Chairman and James Jessup Clerk of the Peace

I CERTIFY, that Samuel Brown of allegiance, as required by law, before me this 19th day of February 1833. has taken and subscribed the oath

David Macdonald Esquire, Chairman

