

**CIHM
Microfiche
Series
(Monographs)**

**ICMH
Collection de
microfiches
(monographies)**



Canadian Institute for Historical Microreproductions / Institut canadien de microreproductions historiques

© 1996

Technical and Bibliographic Notes / Notes techniques et bibliographiques

The Institute has attempted to obtain the best original copy available for filming. Features of this copy which may be bibliographically unique, which may alter any of the images in the reproduction, or which may significantly change the usual method of filming, are checked below.

L'Institut a microfilmé le meilleur exemplaire qu'il lui a été possible de se procurer. Les détails de cet exemplaire qui sont peut-être uniques du point de vue bibliographique, qui peuvent modifier une image reproduite, ou qui peuvent exiger une modification dans la méthode normale de filmage sont indiqués ci-dessous.

- Coloured covers/
Couverture de couleur
- Covers damaged/
Couverture endommagée
- Covers restored and/or laminated/
Couverture restaurée et/ou pelliculée
- Cover title missing/
Le titre de couverture manque
- Coloured maps/
Cartes géographiques en couleur
- Coloured ink (i.e. other than blue or black)/
Encre de couleur (i.e. autre que bleue ou noire)
- Coloured plates and/or illustrations/
Planches et/ou illustrations en couleur
- Bound with other material/
Relié avec d'autres documents
- Tight binding may cause shadows or distortion
along interior margin/
La reliure serrée peut causer de l'ombre ou de la
distorsion le long de la marge intérieure
- Blank leaves added during restoration may appear
within the text. Whenever possible, these have
been omitted from filming/
Il se peut que certaines pages blanches ajoutées
lors d'une restauration apparaissent dans le texte,
mais, lorsque cela était possible, ces pages n'ont
pas été filmées.
- Additional comments: /
Commentaires supplémentaires:

- Coloured pages/
Pages de couleur
- Pages damaged/
Pages endommagées
- Pages restored and/or laminated/
Pages restaurées et/ou pelliculées
- Pages discoloured, stained or foxed/
Pages décolorées, tachetées ou piquées
- Pages detached/
Pages détachées
- Showthrough/
Transparence
- Quality of print varies/
Qualité inégale de l'impression
- Continuous pagination/
Pagination continue
- Includes index(es)/
Comprend un (des) index
- Title on header taken from: /
Le titre de l'en-tête provient:
- Title page of issue/
Page de titre de la livraison
- Caption of issue/
Titre de départ de la livraison
- Masthead/
Générique (périodiques) de la livraison

This item is filmed at the reduction ratio checked below/
Ce document est filmé au taux de réduction indiqué ci-dessous.

10X	14X	18X	22X	26X	30X
<input type="checkbox"/>	<input type="checkbox"/>	<input type="checkbox"/>	<input checked="" type="checkbox"/>	<input type="checkbox"/>	<input type="checkbox"/>
12X	16X	20X	24X	28X	32X

The copy filmed here has been reproduced thanks to the generosity of:

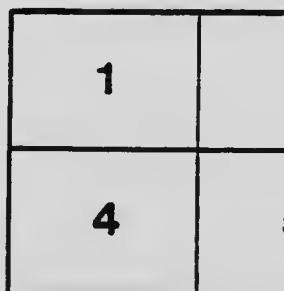
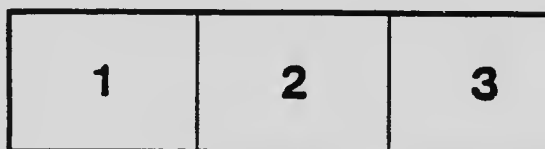
Archives of Ontario
Toronto

The images appearing here are the best quality possible considering the condition and legibility of the original copy and in keeping with the filming contract specifications.

Original copies in printed paper covers are filmed beginning with the front cover and ending on the last page with a printed or illustrated impression, or the back cover when appropriate. All other original copies are filmed beginning on the first page with a printed or illustrated impression, and ending on the last page with a printed or illustrated impression.

The last recorded frame on each microfiche shell contains the symbol \rightarrow (meaning "CONTINUED"), or the symbol ∇ (meaning "END"), whichever applies.

Maps, plates, charts, etc., may be filmed at different reduction ratios. Those too large to be entirely included in one exposure are filmed beginning in the upper left hand corner, left to right and top to bottom, as many frames as required. The following diagrams illustrate the method:



L'exemplaire filmé fut reproduit grâce à la générosité de:

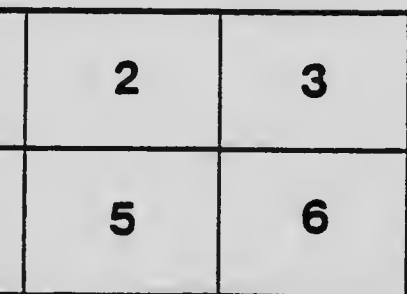
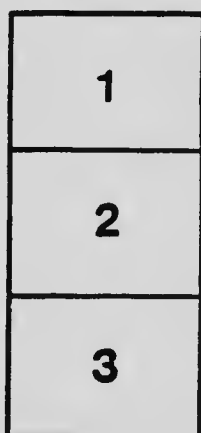
Archives of Ontario
Toronto

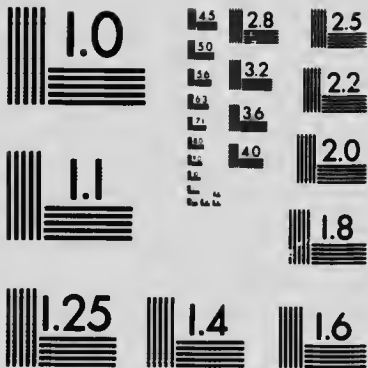
Les images suivantes ont été reproduites avec le plus grand soin, compte tenu de la condition et de la netteté de l'exemplaire filmé, et en conformité avec les conditions du contrat de filmage.

Les exemplaires originaux dont la couverture en papier est imprimée sont filmés en commençant par le premier plat et en terminant soit par la dernière page qui comporte une empreinte d'impression ou d'illustration, soit par le second plat, selon le cas. Tous les autres exemplaires originaux sont filmés en commençant par la première page qui comporte une empreinte d'impression ou d'illustration et en terminant par la dernière page qui comporte une telle empreinte.

Un des symboles suivants apparaîtra sur la dernière image de chaque microfiche, selon le cas: le symbole \rightarrow signifie "A SUIVRE", le symbole ∇ signifie "FIN".

Les cartes, planches, tableaux, etc., peuvent être filmés à des taux de réduction différents. Lorsque le document est trop grand pour être reproduit en un seul cliché, il est filmé à partir de l'angle supérieur gauche, de gauche à droite, et de haut en bas, en prenant le nombre d'images nécessaire. Les diagrammes suivants illustrent la méthode.





MICROCOPY RESOLUTION TEST CHART
NATIONAL BUREAU OF STANDARDS
STANDARD REFERENCE MATERIAL 1010a
(ANSI and ISO TEST CHART No. 2)

NIAGARA



TORONTO

ROUTE



SCENIC GRANDEUR

AMID

Historic Surroundings

Buffalo-Niagara Falls-Toronto

Starting at the foot of the lower rapids, with ports of call at Lewiston, N.Y., Queenston, Ont., Niagara-on-the-Lake, Ont., and across Lake Ontario to Toronto, the steamers of the NIAGARA RIVER LINE make six trips daily (Sunday excepted).

Excellent Dining Room Service on all Steamers.

The Fastest Daylight Connection

NEW YORK TO TORONTO

is via "Empire State Express" of the New York Central R.R., and the Niagara River Line, enabling the hurried business man, as well as the leisurely tourist, to enjoy a pleasurable, restful trip.

Leave New York 8.30 a.m., arrive Toronto 8.30 p.m.

This is only one of the many excellent trains connecting with the Niagara Navigation Co. Steamers, but it is specially mentioned because it is the quickest service day or night by any route between New York and Toronto.

E. B. OSLER, M.P.,
President.

B. W. FOLGER,
Manager.

R. H. McBRIDE
Passenger Agent.

14 FRONT STREET EAST, TORONTO, CANADA

TORONTO LANDING, FOOT YONGE STREET

Ramp
1906
no 66

Canadian Furs



Three-quarters of the world's supply of furs come from Canada. Therefore it follows that furs are better and cheaper here than elsewhere. Visitors to this country should take advantage of their opportunity by calling at our palatial showrooms—the largest in Canada.

**We make a specialty of Alaska Seal,
Canadian Mink and Canadian Sables.**

WRITE FOR CATALOGUES.

The W. & D. DINEEN CO.

LIMITED

**Cor. Yonge and Temperance Sts.,
TORONTO, - CANADA.**

The **FOUR-TRACK** **NEWS**

The Great Illustrated Monthly Magazine of Travel and Education

The **FOUR-TRACK NEWS** is published every month, and each issue is beautifully illustrated and contains from one hundred and forty-four to one hundred and sixty or more pages, every one of which is of human interest.

The scope and character of the magazine are indicated by each month's Table of Contents, which approximates:

A score of articles upon the Places, Peoples and Objects of all countries, with Nature-Studies and other articles upon topics of general value and interest.

A number of poems that contain something more than a rhyme.

An Editorial Department devoted to "The World's Progress."

A couple of pages of "Vest Pocket Confidences"—in a minor key.

A department of especial interest to the travelling millions under the caption "In the Trail of the Traveller."

A "table" of Book Reviews.

Two pages devoted to current New York theatrical doings, treated in a brief "what and where" way.

And enough crisp and humorous briefs, edited by the scissors, to create many a laugh.

In short, each issue of the **FOUR-TRACK NEWS** contains a one-dollar assortment of good things for 10 cents, every article being fully illustrated by the finest half-tones that can be made.

Subscription: \$1.00 per year; foreign countries, \$1.50; at news stands, 10 cents per copy.

GEORGE H DANIELS

— Publisher —

7 East 42d St., NEW YORK

ONTARIO JOCKEY CLUB.



UNDoubtedly the greatest social outdoor events of the year in Canada are the Spring and Autumn Meetings of the Ontario Jockey Club, Toronto, which are held in May and September, at the delightfully situated race course of the Club at Woodbine Park on the shores of Lake Ontario. Nowhere, perhaps, on the Continent of America is a more representative gathering of all classes of the community to be seen, which to the visitor has the appearance of a huge garden party; but, while the social side of these meetings is jealously guarded, the Directors of the Ontario Jockey Club have always taken care that the object the Club had in view from its inception, viz.: the improvement of the breed of horses in the Dominion, should not play a secondary part, and therefore distribute annually the large sum of \$100,000 in purses to be competed for at their meetings. This liberality has met with a just reward, for horsemen from all points of the Dominion and the United States foregather at Toronto and assist in making these meetings the success for which they are justly famous.

The King's Plate—the blue ribbon of the Canadian Turf—has also the proud distinction of being the oldest fixture on the American Continent—run continuously since the year 1860.



**The Popular, Commercial
and Tourist Route**

CONNECTING
Cleveland and Buffalo

"WHILE YOU SLEEP"
Steamer "CITY OF BUFFALO" (new)
Steamer "CITY OF ERIE" (new)

These steamers are new, fast, and luxurious in their appointments, are unsurpassed for comfort and convenience, and the service is the finest offered on the interior waters of the United States.

All tickets reading over the Lake Shore and Michigan Southern Railway will be accepted on this Company's steamers without extra charge.

Ask ticket agents for tickets via C. & B. Line. Send four cents in stamps for handsome illustrated pamphlet.

TIME CARD, DAILY
Leave Cleveland 8.00 p.m.
Arrive Buffalo 6.30 a.m.
Leave Buffalo 8.00 p.m.
Arrive Cleveland 6.30 a.m.

CENTRAL STANDARD TIME USED
W. F. HERMAN, G. P. A., Cleveland, Ohio
The Cleveland & Buffalo Transit Co.

THE ROSSIN HOUSE TORONTO

Has been remodelled, the alterations amounting to a practical re-building of the main parts of the hotel. The improvements comprise a new Billiard Room, Bar, Tea Room, Grand Staircase, Main and Ladies' Entrances, German Cafe, and the grand new Rotunda with encircling Balcony, from which—as also from the Tea Room—ladies and their escorts can observe the busy ground-floor life of this up-to-date hotel. Work on these improvements occupied practically the whole of last year, and was completed in February last. The whole of the ground floor has been laid in marble mosaic, and not the least of the attractions of the new Rotunda is the fine Fire-Place. New furniture, fixtures, etc., have been put in, and the plumbing, and suite accommodations, bath rooms, etc., brought up to the "latest." In fact, THE ROSSIN, which has always had the advantage of the best hotel location in Toronto for the travelling public, whether on business or pleasure bent, is now unquestionably entitled to rank in the very first class as an hostelry thoroughly modern in all its equipments.

American Plan:
\$2.00, \$2.50, \$3.00

European Plan:
\$1.00, \$1.50, \$2.00



Toronto from a Tally-Ho

A VERY interesting way in which to see Toronto is from the top of one of

Verral's Ascot Coaches

This is a London idea, to see the sights from a 'bus. The Toronto way is very much of an improvement for comfort.

Coaches start on the arrival at Toronto of steamers of this line.

Our Agent will be found on steamers, who will be pleased to give all information concerning the drives, and sell tickets. Fare, round trip, \$1.00.

Parties contemplating a trip, write for our "HAND BOOK OF TORONTO" Free.

KING EDWARD HOTEL

TORONTO, CANADA

EUROPEAN AND AMERICAN PLAN

A NEW HOTEL **POSITIVELY FIREPROOF**
400 Rooms 300 Baths

ALL MODERN APPLIANCES AND
CONVENIENCES : : : CUISINE
AND SERVICE UNEXCELLED : : :

RATES:
EUROPEAN PLAN: **AMERICAN PLAN:**
\$1.50 Per Day and Upwards \$3.00 Per Day and Upwards

THE KING EDWARD HOTEL CO., Limited
PROPRIETORS

WILLIAM C. BAILEY, Manager

To H. M. FURRIERS H. R. H.
QUEEN ALEXANDRA. PRINCE OF WALES

ARE YOU INTERESTED IN FURS?

Even if you spend your winters in climates too warm for such things wouldn't you like to see the pelts we gather from Russia, China, South America, the Balkans, Germany, the Pnyloff Islands and Canada? Both in Quebec and Toronto we make the grandest display of Furs you ever saw, and we extend to you a very cordial invitation to visit us : : :

HOLT, RENFREW & CO.

TORONTO
5 King East.

QUEBEC
35-41 Buade St.

**VISITORS
TO
TORONTO**

DON'T FAIL TO GO TO

Hanlan's Point

... THE ...

**Toronto Ferry Co's
Famous Summer Resort**

**Steamers
leave
West side
of
Yonge
Street
Wharf
every
15 minutes.**

**FREE VAUDEVILLE
PERFORMANCES**

TWICE DAILY

**FIGURE 8 ROLLER
COASTER**

SCENIC RIVER

**AND A HOST OF OTHER
ATTRACTIONS**



THE QUEEN'S HOTEL

TORONTO

Is within easy reach of steamboat landing, and commands view of Lake Ontario. It is surrounded by beautiful gardens, which render it the coolest hotel in Toronto.....

HOTEL COACHES MEET ALL BOATS AND TRAINS

RICH CUT GLASS



MADE IN CANADA BY
GOWANS, KENT & CO.
16 Front Street East, - TORONTO

NIAGARA RIVER LINE

THE NIAGARA-TORONTO ROUTE

CONNECTING

BUFFALO-NIAGARA FALLS-TORONTO



TORONTO
PARLIAMENT BUILDINGS, CITY HALL AND CHURCHES

THE NIAGARA NAVIGATION COMPANY, Limited, popularly known as the NIAGARA RIVER LINE, consists of three fine fast steel steamers, making at the height of the season, six round trips daily (Sunday excepted) between Toronto, Ont., and Lewiston, N.Y. via Lake Ontario and the Niagara

River, calling at Niagara-on-the-Lake, Ont., and Queenston, Ont. The trip occupies about two hours and a half.

Connection is made at Lewiston, N.Y., with trains of the New York Central & Hudson River R.R. for Niagara Falls, Buffalo and New York, and with the electric cars of the "Great Gorge Route" for Niagara Falls and Buffalo. At Niagara-on-the-Lake on the Canadian side of the river the steamers are met by trains of the Michigan Central R.R. making quick connection for Niagara Falls and Buffalo. At Queenston, 7 miles up the river (opposite Lewiston), electric cars of the International Railway Company start from steamer landing and follow the Canadian cliff to Niagara Falls.

A glance at the map herein may suggest to the traveller a welcome change from cars to boat and a refreshing sail across the lake, avoiding many miles of tiresome railroad journey. The map, however, gives no hint of the magnificent scenery and historical features of the route

In the following pages a brief survey is made of the various routes connecting Buffalo and Niagara Falls with Lewiston, Queenston and Niagara-on-the-lake where passengers board the Niagara River Line steamer for Toronto.



A DECK SCENE, STEAMER CHIPPEWA

TORONTO

Population 295,000, the most progressive city of Canada, is noted for its exhilarating climate, bright, sunshiny days and refreshing cool nights, making it an ideal spot for the summer tourist. It has been called the city of churches and many fine examples of architecture are to be found among them and in the numerous public buildings.

The city is generously provided with parks, having a total of 1458 acres, where popular free concerts are frequently held by the military bands. A splendid harbor, sheltered by a long narrow island extending five miles in front of the city, affords an arena for yachtsmen. Many interesting sailing contests are held during the season.

Ferry steamers ply constantly from Toronto across the Bay to the various resorts upon the Island, which are well worthy of a visit.

One of the best views obtainable of the city is to be seen from the decks of the Niagara River Line steamers as they enter the harbor.



REVIEW OF CANADIAN VOLUNTEERS

As a convention city, Toronto stands unsurpassed, offering many attractions in addition to an excellent hotel service.

An interesting way in which to see the city is from the top of a "Tally Ho." These unique vehicles meet all boats, and seats may be reserved or carriages engaged through agents of the transfer company in uniform on board the steamer.

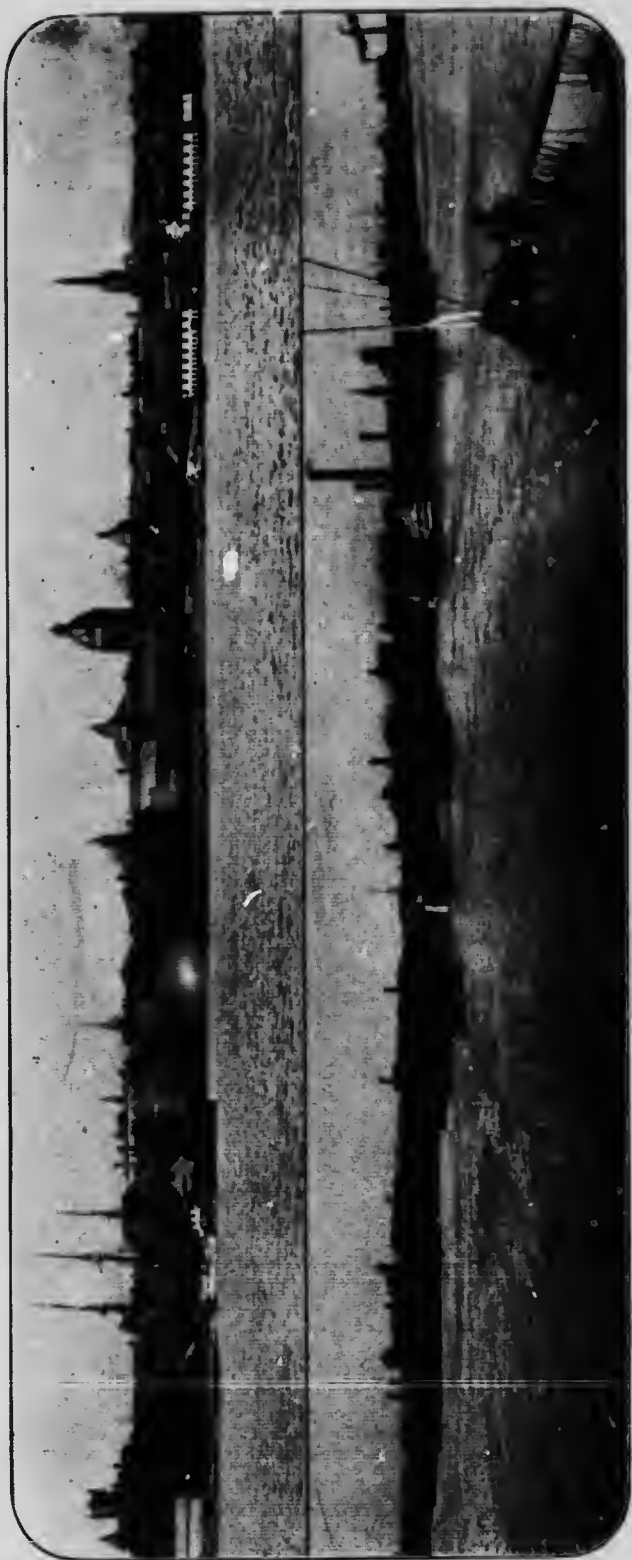
The steamer landing is at the foot of Yonge Street, two minutes walk from street cars, connecting all parts of the City

The Statistics of the Imperial Observatory maintained at Toronto since 1845, amply prove the character of its temperature.

TORONTO				Highest	Lowest	Mean
Average temperature during						
51 years,	.	.	June	74.57	54.27	62.05
"	.	.	July	73.50	54.80	67.07
"	.	.	August	75.02	57.11	66.25

THE TORONTO ISLAND

On the opposite side of the harbor of "Toronto Bay" is "Hiawatha Island," whose sand beaches, five miles in length, are washed by the waters of the broad lake. This island is beautifully laid out as a park and provides entertainment and rest for all classes, from those who revel in the open air vaudeville performances to the more serious who seek the tranquility of nature. Towards the eastern end are the beautiful summer homes of many of Toronto's wealthiest citizens.



UPPER PICTURE OLD TORONTO, LOWER ONE OF TO-DAY (TAKEN FROM DECK OF NIAGARA RIVER LINE STEAMER)



VIEW OF NIAGARA GORGE

THE NEW YORK CENTRAL & HUDSON RIVER R.R. TO LEWISTON, N.Y.

From the Union Station Buffalo, along the American side of the Niagara River skirting the bank from Lake Erie to the foot of the Rapids at Lewiston and passing in full view of Niagara Falls, Brock's Monument, Queenston Heights and the lower rapids, the New York Central trains reveal 20 miles of unequalled scenery. Stop-over privileges are allowed at Niagara Falls. This route forms the natural connection to all points in Canada, the trains running close to the steamer dock at Lewiston. Baggage may be checked through to destination.

12 HOURS NEW YORK TO TORONTO.

During the summer season one may leave New York on the Empire State Express at 8.30 a.m., change cars at Buffalo, connecting at Lewiston, N.Y., with the Niagara River Line steamer, and arrive Toronto 8.30 p.m. This is only one of the many comfortable trains connecting with the Niagara River Line, but it is specially mentioned because it is the quickest service, day or night, by any route, between New York and Toronto.



EMPIRE STATE EXPRESS

MICHIGAN CENTRAL R. R.

TO NIAGARA-ON-THE-LAKE

From the Union Depot in Buffalo, the Michigan Central R.R. passes through Black Rock and over the celebrated "International Bridge" to the Canadian side, thence to Falls View Station, where all trains stop five minutes, allowing passengers to enjoy the sublime sight. This is **an ideal spot from which to view the Falls.**

Victoria Park is owned by the Canadian Government and is directly below Falls View Station, one of the most delightful spots on earth, where all points are good ones to view Niagara.



LANDING AT NIAGARA-ON-THE-LAKE

Niagara Falls, Canada, is the point where the Michigan Central R.R. starts west to points in Canada, Detroit, Chicago, etc.

The route of the Michigan Central train from Niagara Falls to Niagara-on-the-Lake passes through a country justly called "**The Fruit Garden of America.**"

As Niagara-on-the-Lake is approached the camp ground of the Canadian Militia may be seen. Here during the month of June the annual camp is held. Trains run direct to the steamer landing, making close connection with the Niagara River Line steamers. The run from Niagara-on-the-Lake to Toronto is made in about two hours.

NIAGARA FALLS PARK AND RIVER RAILWAY.

INTERNATIONAL RAILWAY CO.

Canadian Scenic Route, via Queenston, Ont.

Both banks of the Niagara River constitute historic ground. On the Canadian side the tourist will be interested in the story of **Sir Isaac Brock**, who, as "the hero

of Upper Canada," fills an important place in Canadian history. Surmounting **Queenston Heights** is the superb obelisk to his memory, rivalling the Nelson Column in London in height and nobility. Underneath, in the massive sarcophagus rests the dust of Brock and his Aide-de-camp, McDonell, both of whom were slain in the battle of **Queenston Heights** on October 13th, 1812—the first real conflict of arms in the War of 1812-14.



BROCK'S MONUMENT

On a clear day this monument may be seen by the naked eye from Toronto, 40 miles distant.

Within a few yards of the present monument may be seen the foundation of the first monument

erected in 1824 and destroyed by gunpowder by a miscreant in 1840. Half way down the slope is the site of the 18-lb. battery that figured so prominently in the battle, and hidden in the forest nearby may be distinguished long trenches where the dead were buried.

At the base of the Heights stands the cairn, unveiled by King Edward, as Prince of Wales, in 1860, which marks the spot where Brock fell, mortally wounded.

In the village of **Queenston Heights** stands the old Hamilton stone storehouse to which Brock's body was taken after his death, and on the outskirts of the village is the burial plot of the Hamilton family where he was buried from 1824 till the removal of the remains to their present resting place.



THE LOWER NIAGARA RIVER FROM QUEENSTON

Standing near the river bank is the **Brock Memorial Church**, containing stained glass windows decorated with the armorial bearings of the Brock family.

In the quaint old village of **Queenston**, nestling peacefully under the shadow of the battle-scarred heights, stand two ancient inns that have survived the ravages of time and still shelter the traveller.

The electric railway runs along the brink of the cliff on the Canadian side of "**The Niagara Gorge**" following every curve of the river from Chippewa, two miles above the Falls, to Queenston seven miles below the Falls, where connection is made with steamers. It is largely an excursion line, and passengers from railways running to Niagara Falls can profitably visit the points of interest revealed by it.

At the Falls the cars run close to the **Cataract**, within the cloud of the drifting spray. **Suspension Bridge** marks the commencement of the "**Whirlpool Rapids**" and one-half mile farther down the tracks make the great circle around the edges of the cliffs enclosing the weird and terrible Whirlpool. The river finds a new outlet for its waters, and following the bank the railroad descends to the lake level. **The rapids are in constant view**, and platforms are erected at intervals for the benefit of tourists who may wish to get off, and continue by subsequent cars.

Brock's Monument Park is on the edge of the Niagara cliff, and far down below lie spread out, the fertile peach orchards and groves, the winding river, on which may be seen the steamers passing up and down, and, beyond all, the deep blue waters of Lake Ontario.

From its elevated position, skirting along the edge of the lofty cliffs, this Canadian route gives distinct vistas and varying views of the marvellous curvings of the majestic river, which are obtainable from no other points.

THE "GREAT GORGE ROUTE" TO LEWISTON, N.Y.



RAPIDS OF THE LOWER NIAGARA

This Line is a marvel of skill and ingenuity in electric railway building. It is double-tracked its entire length, and provided with every safety appliance known in modern railroad building.

Commencing at the Falls, the most wonderful of river canyons the Niagara Gorge is entered by a gentle grade on the side of the rocky gorge: passing under the Cantilever Bridge and the new Steel Arch Bridge which span the river, the line reaches the lower level at the Whirlpool Rapids. The waters, which have been slowly moving in solemn smoothness, as though resting after their terrific leap, here rise like maddened horses, and with irresistible force are suddenly lashed into indescribable fury.

ra
ch
ay
nd

ge
net
of
ner

in
tire
own

l of
ntle
the
nich
the
wly
fter
and
rib-



STEAMER CHIPPEVA (CAPACITY 2,000 PEOPLE)
THE LARGEST PASSENGER STEAMER ON LAKE ONTARIO



WHIRLPOOL-RAPIDS

Coming down the Gorge, close to the raging torrent the wondering passenger is presently brought into full view of the famous **Whirlpool**. The scene presented here is most awe-inspiring. This great basin, lying at the foot of frowning walls, has been formed by the action of the restless rush of waters, which for ages past have been swept against the granite cliffs.

Here the river again seems to pause, circling round in sullen whirl. Huge logs are sometimes seen suddenly tossing their ends high in air, to be sucked down only a moment later into the vortex of the maelstrom. **It is a weird and uncanny place.** Suddenly the waters find their exit, and springing into motion afresh, pursue their way to the sea. Following the course of the river, the car now slowly creeps around Ongiara curve, directly opposite to which, on the Canadian shore, are to be seen the most remarkable rock bound formations. Standing out with bold relief, as if carved by the hand of a sculptor, may be seen the bust of a human form, known as the "**Demon of the Gorge.**"

Now the descent of the Lower Rapids is commenced. Along here are many historic points. Among them "**Devil's Hole**" near the wonderful Giant Rock, which stands like a silent sentinel. The rivulette of Bloody Run is passed, where, in 1763, a company of British soldiers were ambushed at the top of the steep banks by a band of Seneca Indians. Out of ninety men but three

escaped—the rest were either butchered or thrown over the cliff. High on the Canadian Heights towers the splendid shaft of “Brock’s Monument.”

Opposite on the American cliff are the ruins of Old Fort Gray, whose earthworks beheld in 1812 the “Battle of Queenston Heights.” Between them has been erected a new Suspension Bridge, forming a public highway between the two countries, a practical illustration of the present friendly intercourse and change of attitude from days gone by.

NIAGARA FALLS

“Earth’s grandest sight conceived to be
The Emblem of God’s Majesty.”



NIAGARA FALLS FROM PROSPECT PARK

“Of all the sights on this earth of ours, which tourists travel to see, at least 1/10 of those which I have seen, I am inclined to give the palm to the **Falls of Niagara**. In the catalogue of such sights I intend to include all buildings, pictures, statues and wonders of art made by man’s hands, and also all beauties of nature prepared by the Creator for the delight of all creatures. This is a long word, but as far as my taste and judgment go, it is justified. I know no other one thing so beautiful, so glorious, so powerful. At Niagara there is the fall of water alone. But the fall is more graceful than Giotto’s

Tower, more noble than Apollo. The peaks of the Alps are not so astounding in their solitude. The valleys of the Blue Mountains in Jamaica are less green. The finished glaze or life in Paris is less invariable; and the full tide of trade round the Bank of England is not so inexorably powerful.—*Anthony Trollope*



"Majestic Torrent, God hath set His seal,
Of beauty, might, and grandeur on the brow,
For signs of these to see, and hear, and feel,—
Beneath His shining sky, transcendent thou!"
—*Wm. C Richards.*

"The thoughts are strange that crowd into my brain
While I look upward to thee; It would seem
As if God power'd thee from His 'hollow hand'
And hung His bow upon thine awful front,
And spoke in that loud voice which seem'd to Him
Who dwelt in Patmos for his Saviour's sake
The sound of many waters, and had bade
Thy flood to chronicle the ages back
And notch His centuries in the eternal rocks"
—*J. G. G. Brainard.*

"'Tis where Ontario's billow
Like ocean's surge is cur'ed;
Where strong Niagara's thunders wake
The echo of the world."
—*Lydia Maria Sigourney*

"I dreamt not I should wander here,
In musing awe; should tread the wondrous world.
See all its store of inland water hurled
In one vast volume down Niagara's steep,
Or calm behold them, in transparent sleep
Where the blue hills of old Toronto shed
Their evening shadow o'er Ontario's bed."
—*Moore*

"I lifted up mine eyes, and beheld Niagara,—
Oh God! who can describe that sight."
—*Fanny Kemble.*



Points of Interest at and Near Niagara Falls.

American Falls.

Horseshoe Falls.

Prospect Point.

Goat Island and Green Island.

Three Sister Islands.

Cave of the Winds.

Terrapin Rock at brink of Horseshoe Falls.

Power plants on American and Canadian sides.

Dufferin Islands.

Soldiers' Monument.

Natural Food Company's Plant.

Lewiston, N. Y., seven miles from the Falls, where Fenimore Cooper gathered inspiration for his best works

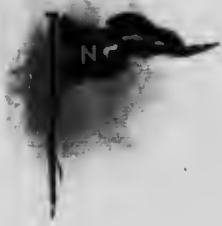
Queenston, Ont., and Brock's Monument.

Niagara - on - the - Lake, Ont., an ideal Summer Resort. The scene of the Canadian Government Military Camp.

Fort Niagara.

Fort George.

Fort Missassauga.



THE
NIAGARA-TORO



NIAGARA R

EXPRESS S

BUFFALO-NIAGARA

THE
TORONTO ROUTE



NIAGARA RIVER LINE

EXPRESS SERVICE

NIAGARA FALLS-TORONTO

COPYRIGHTED
BY
E. W. FELLER
MAY 6, 1911
NIAGARA RIVER LINE
TORONTO

THE NIAGARA RIVER LINE STEAMERS AND THEIR CAPTAINS

"CHIPPEWA"(The Indian Chief), **Capt. John McGiffin.**
The "Chippewa" is 315 feet long, built by Wm. Hendrie

& Co., Hamilton, Canada, from designs of Frank Kirby, designer of the Detroit and Buffalo Line steamers. Has condensing beam engines by W. & A. Fletcher Company, of Hoboken, N.J.

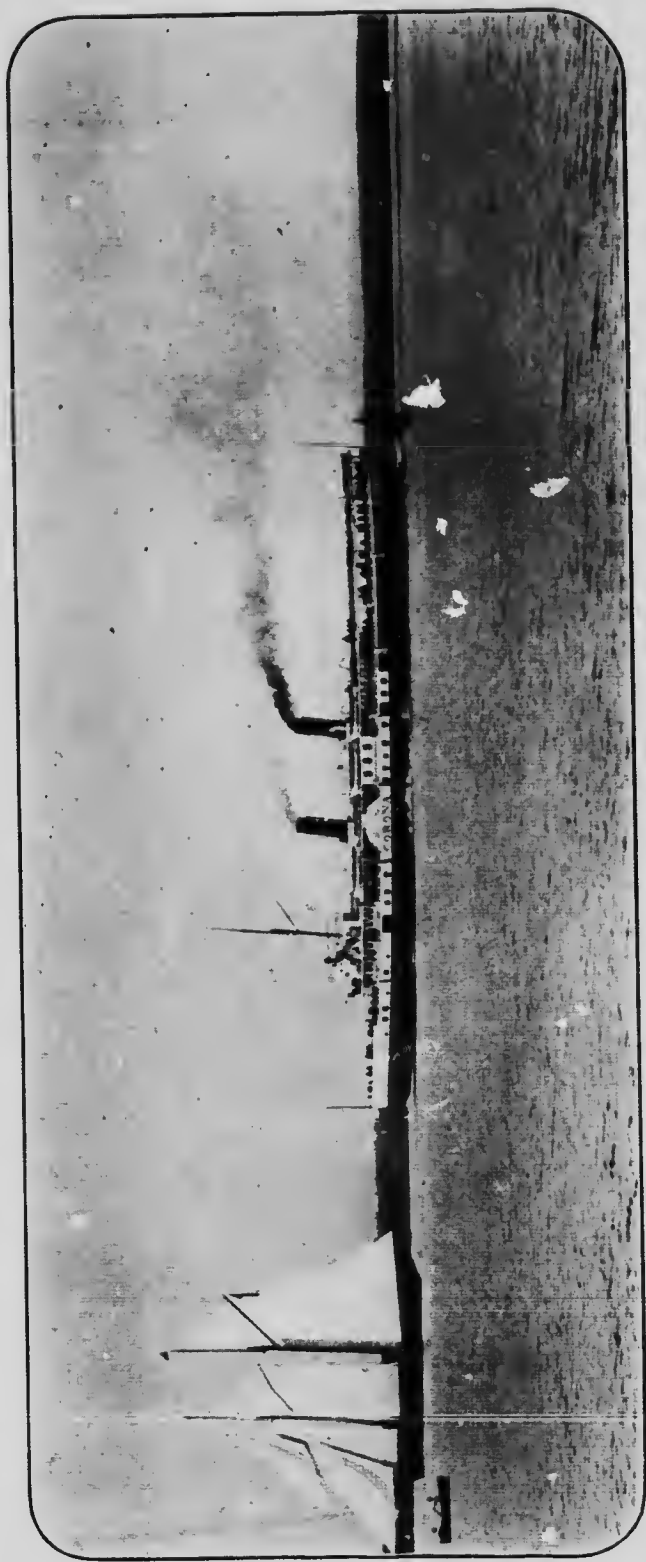


"CORONA" (The Bright Sun-ray), **Capt. Harvey Solmes.** The "Corona" is 277 feet long, built by the Bertram Engine Works Co., Toronto, Canada, has direct acting diagonal compound engines by Rankin, Blackmore & Co., of Greenock, Scotland.

"CHICORA" (The Pretty Flower), **Capt. Robert Clapp.** The "Chicora" is 230 feet long, built by Lairds of Birkenhead, the builders of the celebrated Southern cruiser "Alabama." She has twin oscillating engines by Fawcett, Preston & Co., of Liverpool, England. During the winter of 1903 and 1904 the "Chicora" was thoroughly rebuilt, both as to hull and machinery.

"ONGIARA," **Capt. Hugh McIntyre.** This steamer plys upon the Niagara River, making ferry connection between Lewiston

and Queenston. She also supplies local service between Lewiston, Queenston and Niagara on-the-Lake.



STEAMER CORONA

**Connections at Suspension Bridge, and
Buffalo, N. Y., and Toronto, Ont.**

AT SUSPENSION BRIDGE

- New York Central & Hudson River R. R. for New York and intermediate points.**
- Michigan Central R. R., for Chicago, the West and intermediate points.**
- West Shore R. R., for New York and intermediate points.**
- Erie R. R., for New York and intermediate points.**
- Lehigh Valley R. R., for New York and intermediate points.**
- Wabash R. R., for Chicago, the West and intermediate points.**
- Grand Trunk System for Chicago, the West and intermediate points.**

AT BUFFALO, N. Y.

- New York Central & Hudson River R. R., points East.**
- Michigan Central Ry. all points West.**
- Lake Shore and Michigan Southern R. R., for Chicago, intermediate points and the West.**
- New York, Chicago and St. Louis R. R., for Chicago, intermediate points and the West.**
- Pennsylvania R. R., for Philadelphia, Pittsburg, Washington and the South.**
- Buffalo, Rochester & Pittsburg R. R., for Pittsburg and intermediate points.**
- Delaware, Lackawanna & Western R. R., for New York and intermediate points.**
- Erie & Western Transportation Co., for Duluth and intermediate points.**
- Cleveland & Buffalo Transit Co., for Cleveland and the West.**
- Northern Steamship Co., for Chicago, Duluth and intermediate points.**
- Detroit and Buffalo Steamboat Co., for Detroit and the West.**

AT TORONTO, ONT.

- Richelieu & Ontario Navigation Co. Steamers. for Montreal, Quebec, the Saguenay and St. Lawrence River points.**
- Canadian Pacific R. R., all points in Canada.**
- Grand Trunk System. for Muskoka Districts and all points in Canada.**



STEAMER CHICORA

FOR YOUR INFORMATION.

The Steamers of this line make six trips daily except Sunday.

They are essentially day boats and have the reputation of being most admirably adapted for the service performed.

Excellent Table d'Hote meals are served on all boats, and each steamer is also equipped with lunch counters, where sandwiches, pastry, tea, coffee, etc., may be obtained. It is the endeavor of the Company to make the dining room department first-class in every respect. It is in charge of experienced men, and patrons will confer a favor if they will report to the management any unsatisfactory condition.



DINING ROOM, STEAMER CHIPPEWA

A coat room is provided on the main deck where passengers may check their small valises, parcels, etc., and have them cared for free of charge.

Baggage destined for Europe may be checked in bond from Toronto via the Niagara River Line to the ocean steamship at New York, or vice versa, thus avoiding the necessity of inspection at the United States border. Baggage may also be checked through to any

hotel or residence in New York, Buffalo and other prominent cities, subject to inspection on board steamer.

Officers of the Canadian and United States Governments accompany the steamers across the lake and inspect baggage en route, in order that passengers may be spared delay at the landing.

Passengers when purchasing tickets should see that same are stamped with official stamp of the selling agent, and that they read to destination desired, and in checking baggage that the number of the strap check placed on baggage corresponds with duplicate in their possession.

One hundred and fifty pounds of baggage will be checked free on each full ticket, and seventy-five pounds on each half ticket.

All baggage in excess of this weight will be charged for at the rates authorized under local excess tariffs.

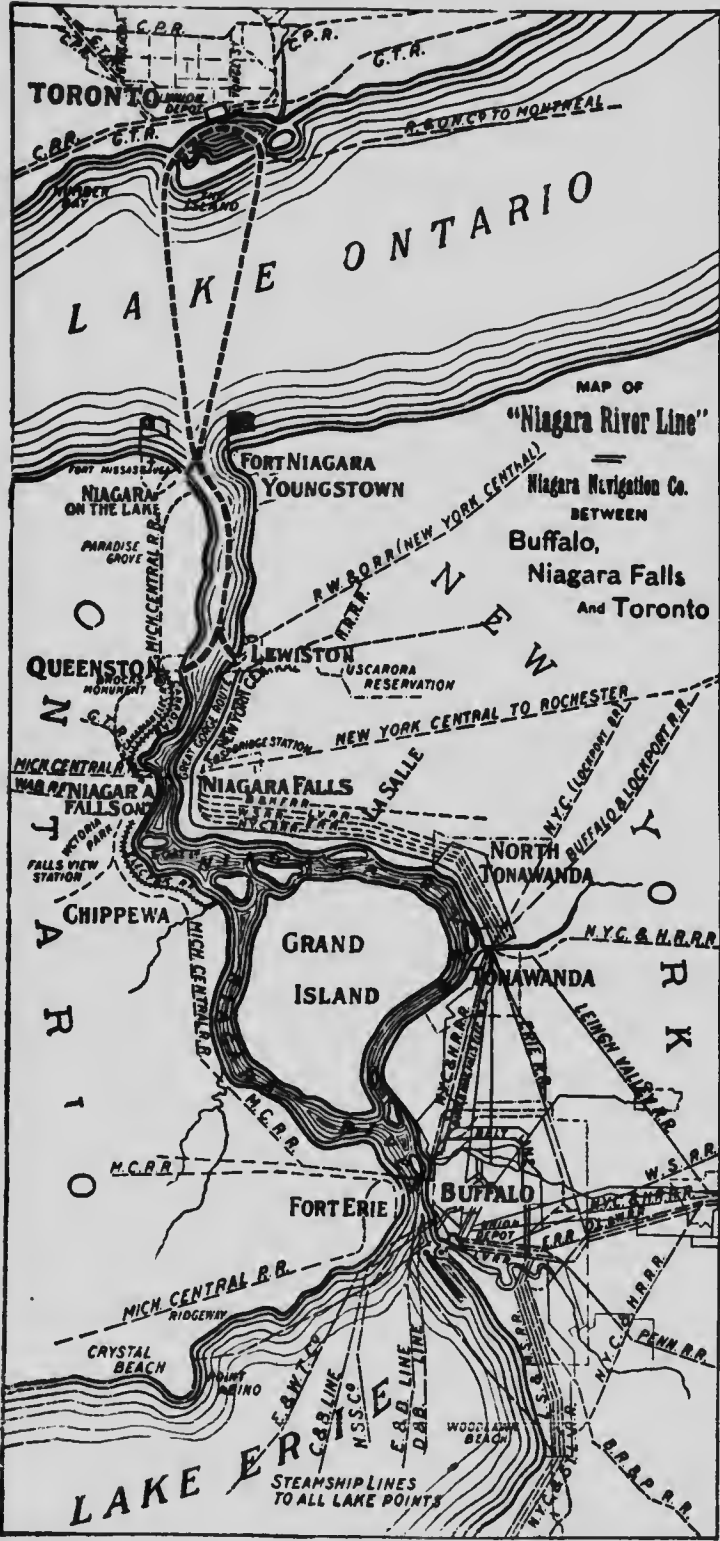


A BIT OF THE UPPER DECK

If baggage is not removed within 24 hours, storage will be charged on each piece at the following rates, viz.: first 24 hours or fraction thereof twenty-five cents, and for each additional 24 hours or fraction thereof ten cents.

This Company does not hold itself liable for loss or damage to baggage after sufficient time has been allowed for its removal.

Coupon ticket agents of all railroads in the United States and Canada sell tickets to all points on, or reached via the Niagara River Line.

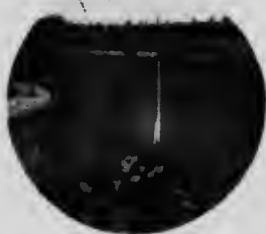


MAP OF
"Niagara River Line"
 —
 Niagara Navigation Co.
 BETWEEN
 Buffalo,
 Niagara Falls
 And Toronto

STEAMSHIP LINES
 TO ALL LAKE POINTS

SUGGESTIONS

If you intend visiting Canada for business or pleasure you cannot afford to go any other way than via **Niagara Falls**. On account of the great attraction of the Falls the railroads reserve their best service to handle the enormous travel to that point. Experienced travellers when going to **Muskoka, Thousand Islands, Montreal and Quebec**, use the **Niagara-Toronto Route**, the great tourist water-way. No other line offers such attractive trips on such splendid steamers through a region rich in natural beauty and historical interest.



CANADA

What delightful memories of happy vacations the word recalls? To the lover of nature Canada stands unrivalled; to the hunter and fisherman she is ever satisfying; to the student of history and foreign customs she is a constant delight, and to the enterprising business man she offers opportunities unlimited. Her forests, lakes and rivers, cities old and new, beautiful water routes and excellent railroad facilities furnish an infinite variety of enjoyment to the tired worker seeking rest and fresh scenes.

There is not in America a more delightful trip than the famous tour,

“ NIAGARA TO THE SEA ”

Niagara Navigation Company to Toronto, thence via Richelieu & Ontario Navigation Company,

ALL THE WAY BY WATER

CLEVELAND AND BUFFALO.



During the heated term the cry of the traveller is for cool refreshing trips by water, and nothing is more restful than a night's sail between **Buffalo** and **Cleveland** on one of the magnificent

steamers of the **Cleveland and Buffalo Transit Company**. These beautiful boats supply every luxury that may be desired. The passenger awakes at his destination in the morning with a sense of exhilaration that is delightful. **Steamers leave Buffalo daily 9 p. m.** Arrive Cleveland 6.30 a. m. **Steamers leave Cleveland daily 8 p. m.** Arrive Buffalo 7.30 a. m.

BUFFALO AND DETROIT.

Another delightful trip is by the steamers of the Detroit and Buffalo line, sailing between Detroit and Buffalo. This route commends itself to the travelling public on account of the magnificent steamers and quick service.

LEWISTON, N. Y.

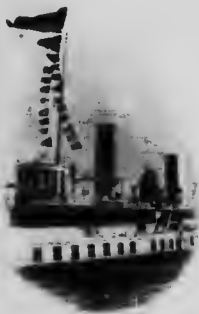
This town is situated at the head of navigation on the lower **Niagara River**, it being as far up the river as the lower Rapids will allow steamers to go. It is one of the important gateways for **Summer travel**, between the North and the South and is the terminus of the the New York Central & Hudson River R. R., and the Great Gorge Road Electric Railway.



SICK CHILDREN'S HOSPITAL, TORONTO ISLAND

NIAGARA-ON-THE-LAKE, ONT.

Is one of the oldest towns in Canada, and formerly the capital of the Province. It is 14 miles from Niagara Falls and 33 miles from Toronto, and is situated where the old town of Newark stood, just opposite Youngstown at the mouth of the lower Niagara River, and overlooking Lake Ontario. It is one of the most delightful summer resorts in Canada, and supports three first-class hotels.



READY FC

Golf and Tennis championships are decided here during the season. The military life of this place is a feature, it being the camping ground of the Canadian soldier.

QUEENSTON, ONT.

Is seven miles from the mouth of lower Niagara River and about the same distance from Niagara Falls. It is nearly opposite Lewiston, N.Y., and is the termination of the first Suspension Bridge over the Niagara River. Queenston is associated in history with the gallant defence made by the British on the adjacent heights in the war of 1812. It is the terminus of the International Ry. Co. Electric Road, the cars run to the dock, connecting with the Niagara River Line steamers for Toronto.

FORT NIAGARA.

At the entrance of the Niagara River on the United States shore stands old Fort Niagara, one of the most historical spots in North America, bearing within its walls the relics of almost two and a half centuries. Here in 1609 LaSalle pursuing his heroic explorations erected the first building (other than an Indian wigwam) to appear on this frontier, and used it as a base of supplies to facilitate his discoveries. Again on this site in 1678 he built a structure which he named Fort Conti. On its ruins in 1687 DeNonville built the ill fated fort

that bore his name, which was besieged by the Senecas as soon as the army departed, and which was destroyed the following year on the demand of the Senecas acting under British instigation. Fort Niagara is garrisoned, and adjacent to it is one of the best reservations for target practice in the United States. During the period of the Canadian Military encampment at Niagara-on-the-lake, the jaunty American soldier crosses the river and fraternizes in friendly good fellowship with the Canadian Militiamen.

It is not possible in a booklet of this character to do justice to the historical story of this region. It is doubtful if any spot on earth records a more thrilling past than the seven miles of river between Lewiston and Niagara-on-the-lake, which to-day flows so peacefully and serenely toward Lake Ontario.

To any one desiring an instructive, entertaining guide and chronical of this famous region, we would recommend the "Official Guide, Niagara Falls River Frontier, scenic, botanic, electric, historic, geologic, hydraulic," (by Peter A. Porter, with illustrations by Chas. D. Arnold).



ENTERING NIAGARA RIVER



STEAMER CHIEF JUSTICE ROBINSON

1853

The above steamer plied on the **Niagara Route** about the year 1853.

Below will be found a picture of the steamer "Chippewa" of to-day, 315 feet in length, twenty miles an hour speed, and with a carrying capacity of two thousand passengers.

The two boats illustrate the remarkable progress made in marine engineering within the last few years. The trip which formerly occupied the "Chief Justice Robinson" six hours is to-day accomplished by the steamer Chippewa in two hours and a half.



STEAMER CHIPPEWA

1905



RESTAURANT

66-68 Yonge St., TORONTO

Headquarters for tourists and transient visitors. One of the largest and most complete restaurants in Canada. Elevator to ladies' dining room and waiting and retiring rooms adjoining.....
Parcels checked for the day free of charge.....

THE HARRY WEBB CO., Limited
TORONTO

J. J. WALSH, Proprietor

Cor. Church and Shuter Sts



It is as essential for the travelling public to secure good hotel accommodation as it is to secure good transportation to make their trip agreeably pleasant. Visitors to Toronto, Canada, will find that the "Elliott" (while not the largest hotel in the city) classes with the best, and assures prospective patrons of courteous treatment and a desire that their visit will be pleasantly spent.

FIRST CLASS ATTENTION IN EVERY DEPARTMENT

Rate \$2.00 per Day & & Weekly Rates Made



NIAGARA TO THE SEA

THE MOST CHARMING
TRIP IN THE WORLD

— Via the —

Niagara River Line

— and the —

Richelieu and Ontario Navigation Co.



STR. "TORONTO."

The magnificent new steamers "Toronto" and "Kingston" leave Toronto daily during the summer at 3.00 p.m. for the beautiful Thousand Islands and the exciting descent of all the Rapids of the St. Lawrence to Montreal and Quebec, — the most picturesque City in America ; thence down the charming lower St. Lawrence by daylight to Murray Bay, Tadousac, and the grand scenery of the marvellous Saguenay River.

This trip embraces more varied Scenic and historical attractions than any other on the continent.

For full information apply or write to

THOS. HENRY,

Traffic Mgr., Montreal.

H. FOSTER CHAFFEE,

Western Pass. Agt., Toronto

W. F. CLONEY,

Travelling Pass. Agt., Niagara Falls, N.Y., and Rochester, N.Y.



Arlington Hotel

TORONTO, CANADA

MOST DESIRABLE LOCATION
COOL AND COMFORTABLE.
WIDE VERANDAHS.....
COMMODIOUS BALL ROOM.

RATES, \$2.00 TO \$3.00 PER DAY

SPECIAL RATES BY THE WEEK.

F. D. MANCHEF, PROP.

ARTHUR H. LEWIS, MGR.

THE
BERTRAM ENGINE WORKS CO.
LIMITED
TORONTO.

BUILDERS OF
STEAMERS: CORONA
KINGSTON, TORONTO
ETC.

STEAM ENGINEERS
and BOILERMAKERS

Cor. Bathurst and Niagara Streets

W. A. MURRAY & CO. Limited

TORONTO

IMPORTERS and RETAILERS

OF

HIGH CLASS DRY GOODS

DESIGNERS and MAKERS

OF

HANDSOME COSTUMES

AND

DEALERS IN RICH FURS

Visitors to Toronto will find this store to be conveniently located—every car line in the city passes within a hundred yards of our King Street entrance. We have a magnificent store, stocked with the world's best productions. You are cordially invited to spend a portion of your time with us next time you visit Toronto.

W. A. MURRAY & CO. Limited

17 to 31 King Street East
16 to 20 Colborne Street
Victoria St., King to Colborne

TORONTO, ONTARIO

CANADIAN SHIPBUILDING COMPANY, LIMITED.

DESIGNERS AND
BUILDERS OF
STEEL SHIPS
OF EVERY TYPE.



HEAD OFFICE:
Union Bank Bldg.,
TORONTO, ONT.

ESTIMATES ON
APPLICATION.

STEEL TWIN SCREW PASSENGER STEAMER BUILDING FOR THE
NIAGARA NAVIGATION CO.

**FAST PASSENGER STEAMERS PROPELLED BY CURTIS STEAM TURBINES
WITH GUARANTEED ECONOMY.**



CANADIAN NATIONAL EXHIBITION, TORONTO

Held Annually from the last Saturday in
August to the 2nd Saturday in September

**SPECIAL EXCURSIONS RUN BY ALL
TRANSPORTATION COMPANIES**

Toronto Exhibition is not only a National Exhibition in name but it is so in reality, for at it are shown specimens of the Fine Art, the Industrial Arts, the resources, and the products of the entire Dominion. It is the one place in which an idea of the vastness of the country and its tremendous possibilities can be obtained. It has gained a universal reputation, and has been pronounced by extensive travellers "The Greatest Annual Exhibition in the World"

\$50,000 IN PRIZES

Close upon \$50,000 a year is distributed in Prizes, and as much more is expended on Special Attractions.

HONORED BY THE KING

It has several times been honored with the patronage of His Majesty the King, who has sent special exhibits and has also permitted a number of England's most famous bands to cross the Atlantic and to play daily concerts on the grounds.

Information and all particulars can be obtained at any time from

J. O. ORR

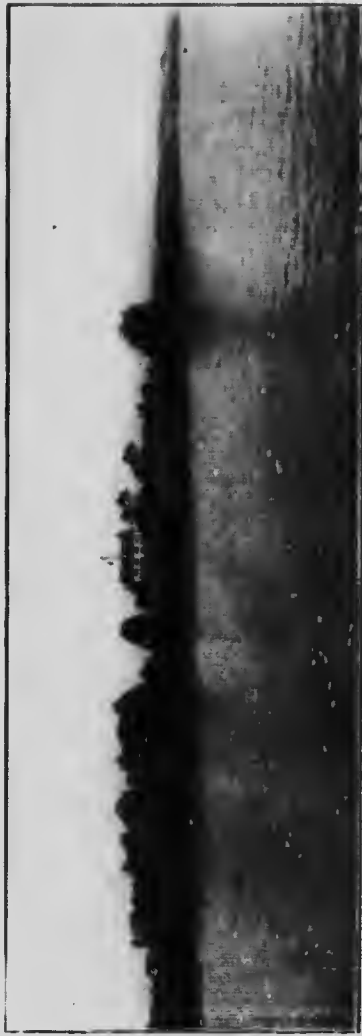
Manager and Secretary

“The Oban”

The most charming and ideal spot—Niagara-on-the-Lake, Canada. This hotel is most beautifully situated, overlooking the grand Niagara River and Lake Ontario. The “Oban” has all modern improvements and conveniences, etc. Beautiful bath rooms on each floor, hot and cold water, electric light throughout, spacious verandahs, balcony in front, bowling green, golf links just in front of hotel, safe bathing and boating, fine black bass fishing, beautiful drives and attractive scenery. Every thing up-to-date. The “Oban” opens May 23rd to October 1st. Rates, \$2.00 to \$3.00 per day; special rates made for fortnight, month or season.

For all further information apply to

W. A. MILLOY, Manager, NIAGARA-ON-THE-LAKE, CANADA



THE NEW SHIP

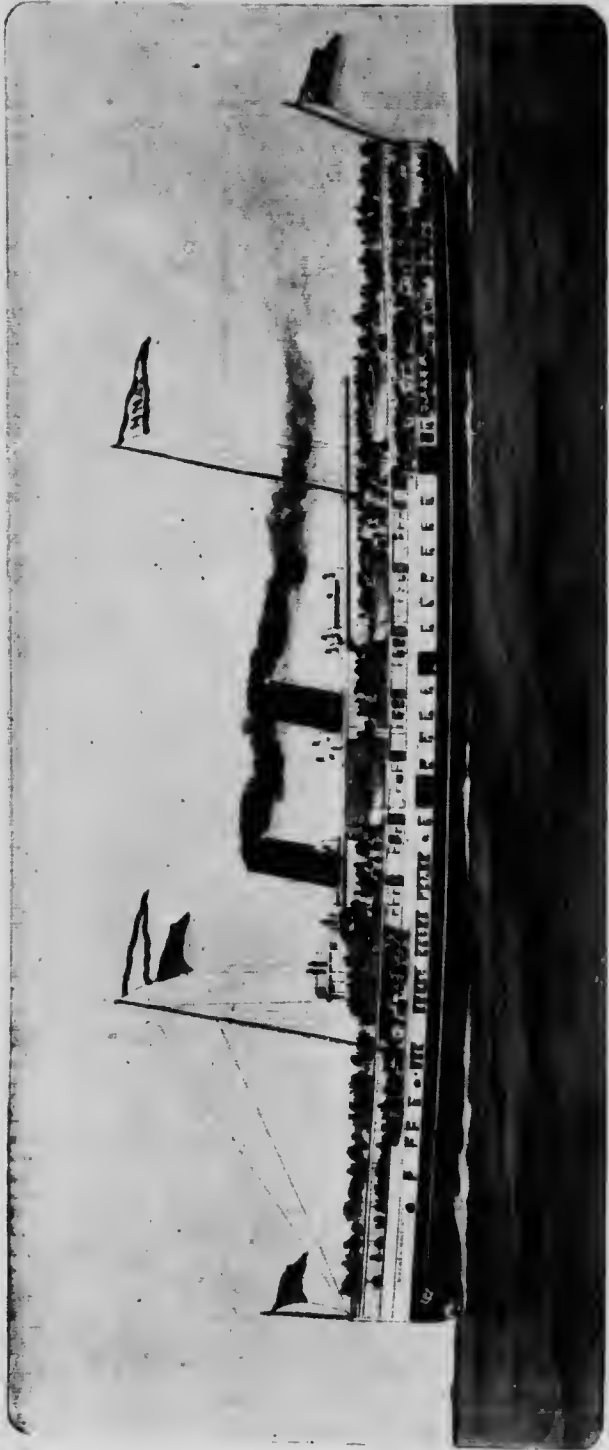
There is now building for the Niagara Navigation Company, a steel day line passenger steamer, which in speed, comfort and beauty, is planned to surpass any ship of her class on the Great Lakes. She will be the length of the Company's steamer "Chippewa," the largest passenger boat on Lake Ontario. Her engines will be of the twin screw vertical inverted direct acting quadruple expansion type capable of driving the ship at railroad speed across the lake. The Yarrow, Schlick and Tweedy system of balancing the engines will be adopted so that all vibration may be overcome. Six powerful Scotch boilers will supply steam.

Many new features will be introduced in the steamer's interior arrangements. The dining room will be located up stairs on the main deck, and patrons while at table may enjoy the lake and river scenery through observation windows.

Owing to the great stability of the ship, the upper promenade deck, which ordinarily ends in front of the pilot house, will be extended to the stem, affording unusual accommodation for passengers and also sheltering the promenade deck below. A light shade deck amidships will serve as an awning over the upper promenade deck.

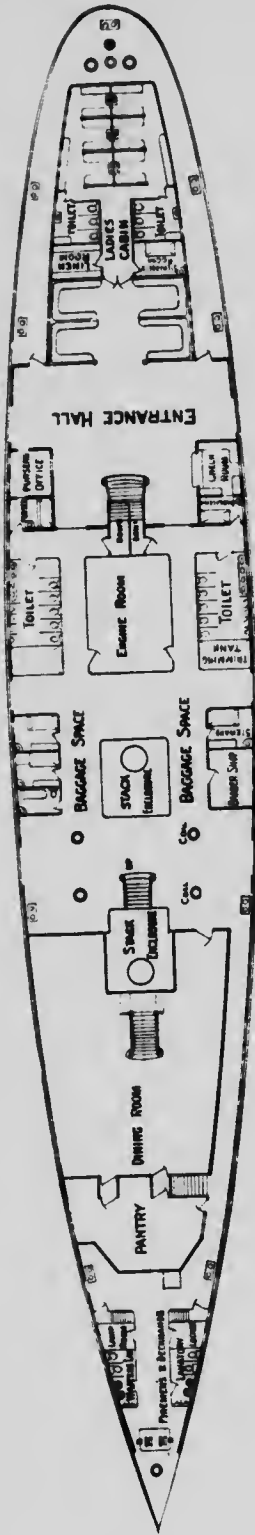
The cabin appointments will be as perfect as experienced knowledge of the needs can make them. The woodwork in the dining room will be mahogany, and other portions of the ship weathered oak, handsomely panelled, with a heavy beam ceiling in the entrance hall. Aft of the main entrance will be the ladies' cabin, and on the deck above, reached by a broad stairway in cathedral oak, the general saloon cabin. Special thought has been given to the arrangement of this room. It will occupy the full width of the ship. The sides instead of being straight will consist of a series of bow windows forming inviting corners where uninterrupted views may be obtained. The furnishings throughout will be of the finest character.

The following pages contain elevation and deck plans of the new ship. She is being built by the Canadian Shipbuilding Company and will be ready for service next season.

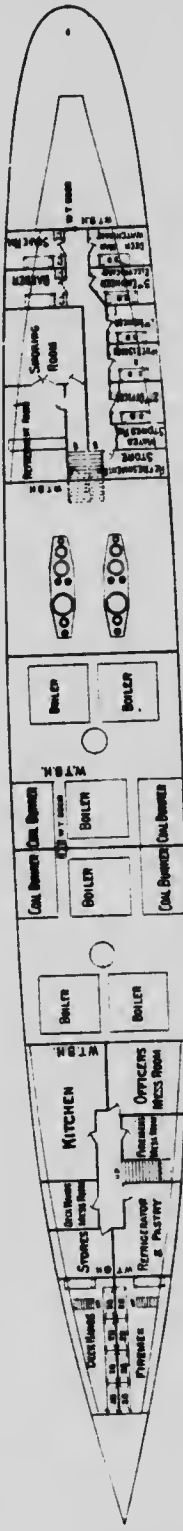


STEEL TWIN SCREW STEAMER NOW BUILDING FOR NIAGARA NAVIGATION CO.

NEW STEAMER

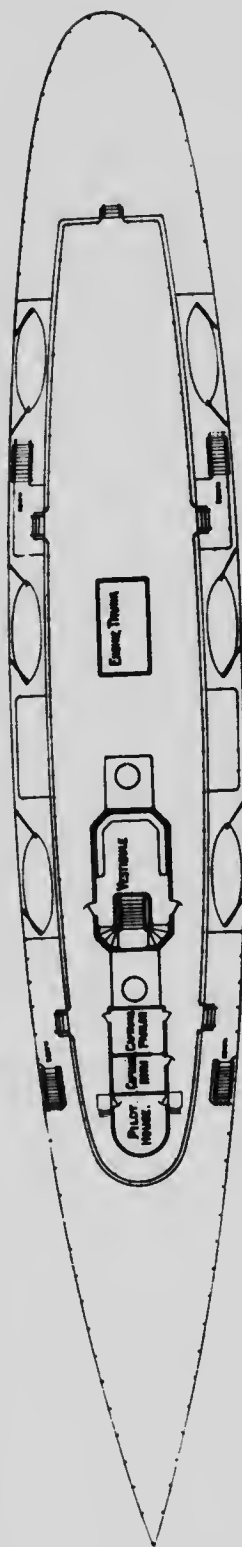


MAIN DECK

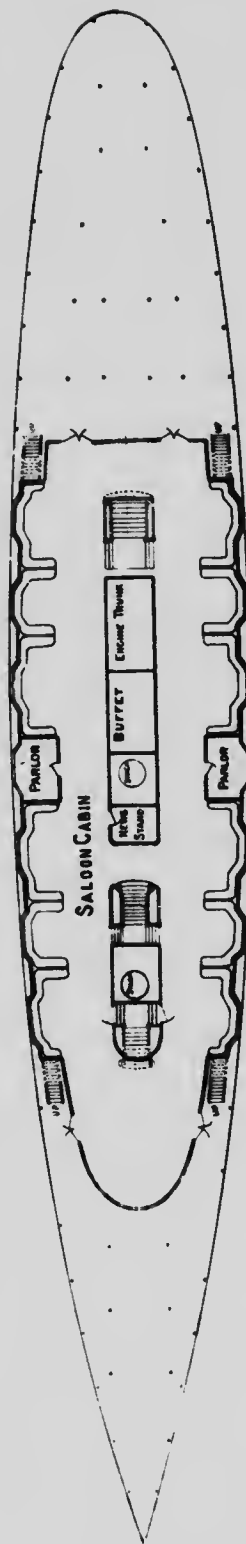


PLAN OF HOLD

NEW STEAMER



UPPER PROMENADE DECK



PROMENADE DECK

NIAGARA RIVER LINE

Niagara Navigation Company, Limited

The Niagara-Toronto Route

BETWEEN

TORONTO

and Niagara-on-the-Lake, Queenston and Lewiston

Connecting with
New York Central & Hudson River R.R.
Michigan Central R.R.
International Railway Co. (Electric)
Niagara Gorge Road (Electric)

THE SHORT CUT VIA

BUFFALO GATEWAY

to Rochester, Cleveland, Pittsburg, Washington,
Philadelphia, Cincinnati, St. Louis,

NEW YORK

AND ALL POINTS SOUTH, EAST AND WEST
PASSENGERS FOR EUROPE

Via Niagara Navigation Company, may have their baggage checked through in bond from Toronto to Ocean Steamship at New York. Baggage may also be checked through to any hotel or residence in New York, Buffalo, and other prominent cities, subject to inspection on board steamer.

Most Attractive Route for Summer Travel

THE UPPER END

OF THE

GREAT ST. LAWRENCE TOUR

The NORTH SHORE ROUTE - Niagara Falls, Toronto, Kingston, Clayton and Alexander Bay to Montreal.

Through Tickets via the NIAGARA RIVER LINE may be obtained at all Railway and Steamboat Agencies in the United States and Canada.

NIAGARA

TORONTO



**NIAGARA RIVER
LINE**

**BUFFALO
NIAGARA FALLS, LEWISTON
QUEENSTON, NIAGARA ON THE LAKE
AND TORONTO.**

• — • — • VIA • — • — •
**THE LOWER NIAGARA RIVER
AND LAKE ONTARIO.**

B.W. FOLGER MANAGER.

TORONTO

CANADA



