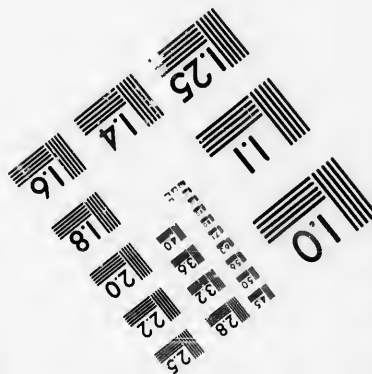
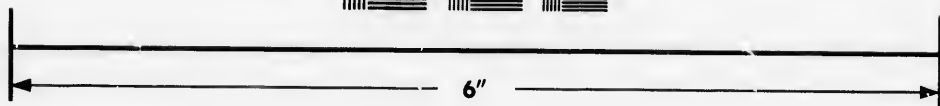
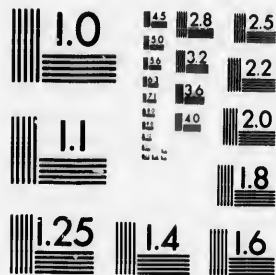


**IMAGE EVALUATION
TEST TARGET (MT-3)**



**Photographic
Sciences
Corporation**

23 WEST MAIN STREET
WEBSTER, N.Y. 14580
(716) 872-4503

**CIHM/ICMH
Microfiche
Series.**

**CIHM/ICMH
Collection de
microfiches.**



Canadian Institute for Historical Microreproductions / Institut canadien de microreproductions historiques

© 1986

Technical and Bibliographic Notes/Notes techniques et bibliographiques

The Institute has attempted to obtain the best original copy available for filming. Features of this copy which may be bibliographically unique, which may alter any of the images in the reproduction, or which may significantly change the usual method of filming, are checked below.

L'Institut a microfilmé le meilleur exemplaire qu'il lui a été possible de se procurer. Les détails de cet exemplaire qui sont peut-être uniques du point de vue bibliographique, qui peuvent modifier une image reproduite, ou qui peuvent exiger une modification dans la méthode normale de filmage sont indiqués ci-dessous.

- | | |
|--|--|
| <input type="checkbox"/> Coloured covers/
Couverture de couleur | <input type="checkbox"/> Coloured pages/
Pages de couleur |
| <input type="checkbox"/> Covers damaged/
Couverture endommagée | <input type="checkbox"/> Pages damaged/
Pages endommagées |
| <input type="checkbox"/> Covers restored and/or laminated/
Couverture restaurée et/ou pelliculée | <input type="checkbox"/> Pages restored and/or laminated/
Pages restaurées et/ou pelliculées |
| <input type="checkbox"/> Cover title missing/
Le titre de couverture manque | <input checked="" type="checkbox"/> Pages discoloured, stained or foxed/
Pages décolorées, tachetées ou piquées |
| <input type="checkbox"/> Coloured maps/
Cartes géographiques en couleur | <input type="checkbox"/> Pages detached/
Pages détachées |
| <input type="checkbox"/> Coloured ink (i.e. other than blue or black)/
Encre de couleur (i.e. autre que bleue ou noire) | <input checked="" type="checkbox"/> Showthrough/
Transparence |
| <input type="checkbox"/> Coloured plates and/or illustrations/
Planches et/ou illustrations en couleur | <input type="checkbox"/> Quality of print varies/
Qualité inégale de l'impression |
| <input type="checkbox"/> Bound with other material/
Relié avec d'autres documents | <input type="checkbox"/> Includes supplementary material/
Comprend du matériel supplémentaire |
| <input type="checkbox"/> Tight binding may cause shadows or distortion
along interior margin/
Le reliure serrée peut causer de l'ombre ou de la
distorsion le long de la marge intérieure | <input type="checkbox"/> Only edition available/
Seule édition disponible |
| <input type="checkbox"/> Blank leaves added during restoration may
appear within the text. Whenever possible, these
have been omitted from filming/
Il se peut que certaines pages blanches ajoutées
lors d'une restauration apparaissent dans le texte,
mais, lorsque cela était possible, ces pages n'ont
pas été filmées. | <input type="checkbox"/> Pages wholly or partially obscured by errata
slips, tissues, etc., have been refilmed to
ensure the best possible image/
Les pages totalement ou partiellement
obscurcies par un feuillet d'errata, une pelure,
etc., ont été filmées à nouveau de façon à
obtenir la meilleure image possible. |
| <input checked="" type="checkbox"/> Additional comments: /
Commentaires supplémentaires: | [Printed ephemera] 1 sheet (verso blank) |

This item is filmed at the reduction ratio checked below/
Ce document est filmé au taux de réduction indiqué ci-dessous.

10X	12X	14X	16X	18X	20X	22X	24X	26X	28X	30X	32X
						✓					

The copy filmed here has been reproduced thanks to the generosity of:

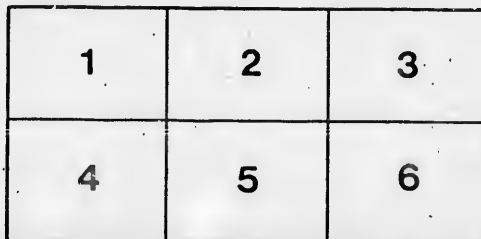
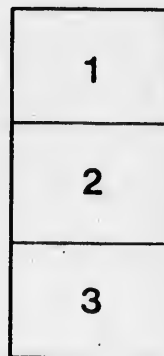
Seminary of Quebec
Library

The images appearing here are the best quality possible considering the condition and legibility of the original copy and in keeping with the filming contract specifications.

Original copies in printed paper covers are filmed beginning with the front cover and ending on the last page with a printed or illustrated impression, or the back cover when appropriate. All other original copies are filmed beginning on the first page with a printed or illustrated impression, and ending on the last page with a printed or illustrated impression.

The last recorded frame on each microfiche shell contains the symbol \rightarrow (meaning "CONTINUED"), or the symbol ∇ (meaning "END"), whichever applies.

Maps, plates, charts, etc., may be filmed at different reduction ratios. Those too large to be entirely included in one exposure are filmed beginning in the upper left hand corner, left to right and top to bottom, as many frames as required. The following diagrams illustrate the method:



L'exemplaire filmé fut reproduit grâce à la générosité de:

Séminaire de Québec
Bibliothèque

Les images suivantes ont été reproduites avec le plus grand soin, compte tenu de la condition et de la netteté de l'exemplaire filmé, et en conformité avec les conditions du contrat de filmage.

Les exemplaires originaux dont la couverture en papier est imprimée sont filmés en commençant par le premier plat et en terminant soit par la dernière page qui comporte une empreinte d'impression ou d'illustration, soit par le second plat, selon le cas. Tous les autres exemplaires originaux sont filmés en commençant par la première page qui comporte une empreinte d'impression ou d'illustration et en terminant par la dernière page qui comporte une telle empreinte.

Un des symboles suivants apparaîtra sur la dernière image de chaque microfiche, selon le cas: le symbole \rightarrow signifie "À SUIVRE", le symbole ∇ signifie "FIN".

Les cartes, planches, tableaux, etc., peuvent être filmés à des taux de réduction différents. Lorsque le document est trop grand pour être reproduit en un seul cliché, il est filmé à partir de l'angle supérieur gauche, de gauche à droite, et de haut en bas, en prenant le nombre d'images nécessaire. Les diagrammes suivants illustrent la méthode.

TO THE MAYOR, ALDERMEN AND CITIZENS OF THE CITY OF MONTREAL, DULY ASSEMBLED IN COUNCIL.

THE COMMITTEE ON ROADS AND IMPROVEMENTS, RESPECTFULLY REPORT,

That among the numerous incidents to which they have had an opportunity of turning their attention, none have appeared to them of greater importance than the subject at present about to be submitted to the Council, it being intimately and inseparably connected with the improvement of Canada, and highly interesting to every enlightened mind; that is, the providing more effectually for the facility of commerce, and thereby securing the advantages which the situation of the country holds out to the agricultural and commercial community of this vast portion of the British Empire

This great object cannot fail to imbue the minds of those, who will take the subject into their serious consideration, with the vast resources of this extensive and extending country, whether viewing them in the various, abundant and augmenting productions of its soil, or in its large lakes, rivers and tributary streams, bearing on the bosom of their waters, a numerous and multifarious craft, winding its way towards the Great Depot for shipment to foreign ports, and returning heavily laden with the productions of other soils.

The advantages which Canada possesses for commercial enterprise, may be extended beyond its own boundary, far into the interior States of the Union, for it must be considered, that the greatest part of the Trade of North America has but two natural outlets to the Ocean, the Mississippi and the St. Lawrence. Although each may have its peculiar advantages, the road to the European Markets through the latter would be irresistibly inviting, were its conveniences and advantages improved, for, where man's interest leads, his inclination urges him to follow. Your Committee cannot too strongly recommend to the Council and people of Canada generally, the necessity of applying themselves with that diligence and determination, which the prosperity of the country requires at their hands, to accelerate and invite the increasing trade to pass through the St. Lawrence; they would also impress upon their minds, that the surest, if not the only way by which this great object can be obtained, is to have the accommodation for Trade and Commerce superior, and the transport cheaper, than are to be found elsewhere.

Your Committee cannot but view with feelings of pride and satisfaction, in common with their fellow citizens, the increased accommodation provided for shipping by the improvement made in their port, and the corresponding increase of vessels since it was made; yet, with that view of the extensive resources of the country which they have but partially and feebly endeavoured to point out, they are convinced that much more accommodation for shipping, greater facilities for transshipment, and security for goods, wares and merchandize, ought to be provided within the City of Montreal, than the present port affords,

or can be made to afford, for be it remembered, that even this summer, vessels from sea have lain in port near three weeks, before they were able to procure a berth for unloading. The great expense of such detention and the numerous other impediments to which commerce is at present subject, would far exceed the interest of a capital, sufficient to make Montreal one of the most commodious ports on the Continent of America, and second for convenience, not even to the famous docks of Liverpool.

Under these considerations, and with the view to meet the improvements in progress, anticipated and required, your Committee have directed their attention to the subject, and from the instructions given, the Surveyor has prepared a plan of a ~~canal, locks, and docks, and various other improvements~~; which they most respectfully submit to the Council, hoping that the same will meet the views and approval of the Board, and their fellow citizens in general. Your Committee would beg leave to notice, that this plan not only combines the great advantages and accommodation of an extensive port, but also of Dry Docks for the repair of shipping to any required extent, as well as hydraulic power to almost any amount.

Your Committee beg also to notice that the projection of this plan which they have now the honor to submit to the Council, has met the approbation of His Honor the Mayor, the Chairman of the Board of Trade, and of several intelligent and enterprising merchants who have examined it, and that it was also most favourably regarded by the late lamented Governor General, Lord Sydenham.

In bringing this matter before the Council, your Committee would most strenuously recommend, that not only the subject which they have the honor to submit, but any other measure, which might tend to increase the facilities of Trade and Commerce, is worthy of the attention of every enlightened and enterprising man in the country; and let it not be said that, while the production and resources of the country are abundant, and our merchandize wafted where we please, while the productions of other soils necessarily come to us, we shut our eyes and ports against our own interest and that of the country, by neglecting to acquire the means of sending your goods to other markets on the cheapest terms, and to provide a sufficient, safe, and commodious harbour, and the means of coming to and going from it with ease, safety and despatch.

All of which is nevertheless respectfully submitted.

(Signed) JULES QUESNEL, Chairman, O. BERTHELET, THOMAS PHILLIPS, JOHN REDPATH, J. MATHEWSON.

Committee Room, } City Hall, 2nd Nov., 1841. }

What canal from above the current St. Mary to Lake and St. Lawrence would be the centre of the city of Montreal and a harbor for ships and river craft. Hence upwards.

