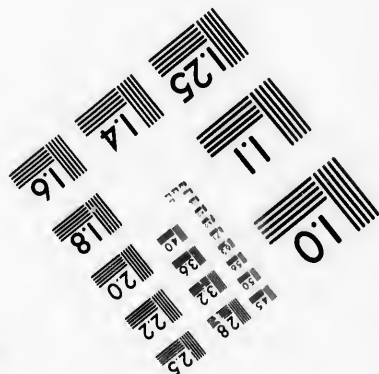
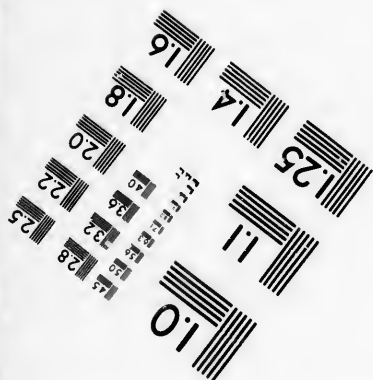
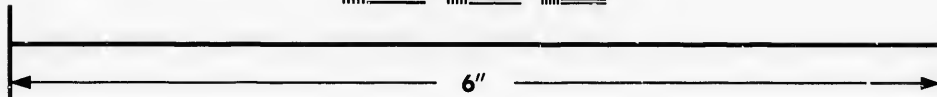
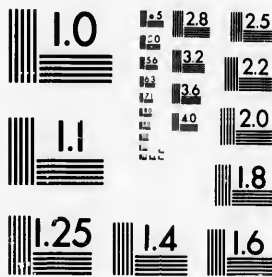


**IMAGE EVALUATION
TEST TARGET (MT-3)**



**Photographic
Sciences
Corporation**

23 WEST MAIN STREET
WEBSTER, N.Y. 14580
(716) 872-4503

1.5 2.8 2.5
1.8 3.2 2.2
2.0 1.8

**CIHM/ICMH
Microfiche
Series.**

**CIHM/ICMH
Collection de
microfiches.**



Canadian Institute for Historical Microreproductions / Institut canadien de microreproductions historiques

10
01

© 1987

Technical and Bibliographic Notes/Notes techniques et bibliographiques

The Institute has attempted to obtain the best original copy available for filming. Features of this copy which may be bibliographically unique, which may alter any of the images in the reproduction, or which may significantly change the usual method of filming, are checked below.

L'Institut a microfilmé le meilleur exemplaire qu'il lui a été possible de se procurer. Les détails de cet exemplaire qui sont peut-être uniques du point de vue bibliographique, qui peuvent modifier une image reproduite, ou qui peuvent exiger une modification dans la méthode normale de filmage sont indiqués ci-dessous.

- | | |
|--|--|
| <input type="checkbox"/> Coloured covers/
Couverture de couleur | <input type="checkbox"/> Coloured pages/
Pages de couleur |
| <input type="checkbox"/> Covers damaged/
Couverture endommagée | <input type="checkbox"/> Pages damaged/
Pages endommagées |
| <input type="checkbox"/> Covers restored and/or laminated/
Couverture restaurée et/ou pelliculée | <input type="checkbox"/> Pages restored and/or laminated/
Pages restaurées et/ou pelliculées |
| <input type="checkbox"/> Cover title missing/
Le titre de couverture manque | <input checked="" type="checkbox"/> Pages discoloured, stained or foxed/
Pages décolorées, tachetées ou piquées |
| <input type="checkbox"/> Coloured maps/
Cartes géographiques en couleur | <input type="checkbox"/> Pages detached/
Pages détachées |
| <input type="checkbox"/> Coloured ink (i.e. other than blue or black)/
Encre de couleur (i.e. autre que bleue ou noire) | <input checked="" type="checkbox"/> Showthrough/
Transparence |
| <input type="checkbox"/> Coloured plates and/or illustrations/
Planches et/ou illustrations en couleur | <input type="checkbox"/> Quality of print varies/
Qualité inégale de l'impression |
| <input checked="" type="checkbox"/> Bound with other material/
Relié avec d'autres documents | <input type="checkbox"/> Includes supplementary material/
Comprend du matériel supplémentaire |
| <input type="checkbox"/> Tight binding may cause shadows or distortion
along interior margin/
La reliure serrée peut causer de l'ombre ou de la
distorsion le long de la marge intérieure | <input type="checkbox"/> Only edition available/
Seule édition disponible |
| <input type="checkbox"/> Blank leaves added during restoration may
appear within the text. Whenever possible, these
have been omitted from filming/
Il se peut que certaines pages blanches ajoutées
lors d'une restauration apparaissent dans le texte,
mais, lorsque cela était possible, ces pages n'ont
pas été filmées. | <input type="checkbox"/> Pages wholly or partially obscured by errata
slips, tissues, etc., have been refilmed to
ensure the best possible image/
Les pages totalement ou partiellement
obscurcies par un feuillet d'errata, une pelure,
etc., ont été filmées à nouveau de façon à
obtenir la meilleure image possible. |
| <input checked="" type="checkbox"/> Additional comments:/ [Printed ephemera] 1 sheet (verso blank)
Commentaires supplémentaires: | |

This item is filmed at the reduction ratio checked below/
Ce document est filmé au taux de réduction indiqué ci-dessous.

10X	12X	14X	16X	18X	20X	22X	24X	26X	28X	30X	32X
								/			

The copy filmed here has been reproduced thanks to the generosity of:

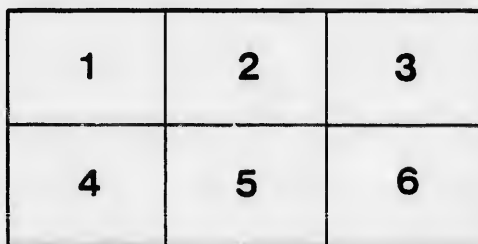
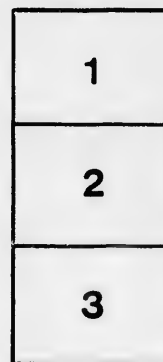
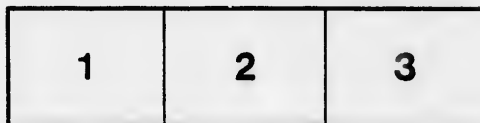
D. B. Weldon Library
University of Western Ontario
(Regional History Room)

The images appearing here are the best quality possible considering the condition and legibility of the original copy and in keeping with the filming contract specifications.

Original copies in printed paper covers are filmed beginning with the front cover and ending on the last page with a printed or illustrated impression, or the back cover when appropriate. All other original copies are filmed beginning on the first page with a printed or illustrated impression, and ending on the last page with a printed or illustrated impression.

The last recorded frame on each microfiche shall contain the symbol \rightarrow (meaning "CONTINUED"), or the symbol ∇ (meaning "END"), whichever applies.

Maps, plates, charts, etc., may be filmed at different reduction ratios. Those too large to be entirely included in one exposure are filmed beginning in the upper left hand corner, left to right and top to bottom, as many frames as required. The following diagrams illustrate the method:



L'exemplaire filmé fut reproduit grâce à la générosité de:

D. B. Weldon Library
University of Western Ontario
(Regional History Room)

Les images suivantes ont été reproduites avec le plus grand soin, compte tenu de la condition et de la netteté de l'exemplaire filmé, et en conformité avec les conditions du contrat de filmage.

Les exemplaires originaux dont la couverture en papier est imprimée sont filmés en commençant par le premier plat et en terminant soit par la dernière page qui comporte une empreinte d'impression ou d'illustration, soit par le second plat, selon le cas. Tous les autres exemplaires originaux sont filmés en commençant par la première page qui comporte une empreinte d'impression ou d'illustration et en terminant par la dernière page qui comporte une telle empreinte.

Un des symboles suivants apparaîtra sur la dernière image de chaque microfiche, selon le cas: le symbole \rightarrow signifie "A SUIVRE", le symbole ∇ signifie "FIN".

Les cartes, planches, tableaux, etc., peuvent être filmés à des taux de réduction différents. Lorsque le document est trop grand pour être reproduit en un seul cliché, il est filmé à partir de l'angle supérieur gauche, de gauche à droite, et de haut en bas, en prenant le nombre d'images nécessaire. Les diagrammes suivants illustrent la méthode.

MORTGAGE

Under and by virtue of the Power of Sale
hereinafter mentioned (default having been made in payment thereof)

Sold by Public Auction

At Tuttle's Hotel, in the Village of Villers

ON

WEDNESDAY, 1879

AT 11 O'CLOCK

THE FOLLOWING

FIRST---Under a Mortgage dated
1879, made by Catharine Currie and William Currie (her husband)
Front Tier of lots in the

TOWNSHIP of CHARLOTTEVILLE,

FIRST---Under a Mortgage of

AGE SALE

Power of Sale contained in the mortgages,
payment thereof) there will be

Public Auction

age of Vittoria, in the County of Norfolk,

ON

May, 18th, '81

O'CLOCK, A. M.,

AVING PROPERTIES:

rtgage dated the First day of October, A.D.
rrie (her husband), to the vendors, part of Lot No. 12, in the broken

EVILLE, in the COUNTY of NORFOLK,

rtgage dated the First day of October, A.D.

FIRST.---Under a Mortgage of
1879, made by Catharine Currie and William Currie (her husband)
Front Tier of lots in the

TOWNSHIP of CHARLOTTEVILLE

CONTAINING 100 ACRES

described by metes and bounds in the said mortgage. There is a

SECOND.---Under a Mortgage

A. D. 1879, made by John Wedge, (Catharine Wedge, his wife joining)

1st.---The south quarter of Lot No. 11, in the first concession
50 acres more or less.

2nd.---That part of the northerly part of Lot No. 11. in said
metes and bounds in said Mortgage, which will be produced on day

3rd.---That certain other part of the northerly part of Lot No. 11
or less, described by metes and bounds in said Mortgage 90 acres
timbered mostly with Oak. There is a good house and orchard of

THIRD.---Under a Mortgage

1880, made by William P. Tisdale (his wife joining therein to bar)

1st.---The great central part of Lot No. 17, in the 1st concession
containing 184 acres, more or less.

2nd.---Part of Lot 18, in the said 1st concession, containing 25 acres

3d.---Another part of Lot 18, in the said 1st concession, containing

4th.---The south-half of Lot 16, in the said 1st concession, containing

About 160 acres of this property are cleared, and the remainder
orchard. It is situated about 3 miles from Vittoria and 9 from Sibley
roads and is watered by a never failing spring creek.

TERMS



And will be made known on day
undersigned.

JOHN MURPHY & SONS.

Auctioneers.

Dated at London, the 5th day of May, A.D. 1881.

HERALD

Mortgage dated the first day of October, A.D.
Carrie (her husband), to the vendors, part of Lot No. 12, in the broken

EVILLE, in the COUNTY of NORFOLK,
NG 100 ACRES, MORE OR LESS,

ge. There is a frame house, barn and stable, situated thereon.

a Mortgage, dated the 27th of February,
ge, his wife joining to bar her dower) to the Vendors.

first concession of the aforesaid Township of Charlotteville, containing

No. 11. in said Township, containing 40 acres more or less, described by
produced on day of sale.

y part of Lot No. 11, in front of said Township, containing 20 acres more
Mortgage 90 acres of the above property are cleared, and the balance is
and orchard of fruit-bearing trees on the premises.

Mortgage, dated the 31st day of July, A. D.
therein to bar her dower) to the Vendors.

1st concession in front, in the aforesaid Township of Charlotteville, con-

containing 25 acres more or less.

ession, containing 7 1-2 acres more or less.

ncession, containing 100 acres, more or less.

and the remainder wood land. On it are fair farm buildings and an
and 9 from Simcoe, in the neighborhood of excellent schools, with good
k.



LIBERAL

a on day of sale, or on application to the

PARKE & PURDOM,

Vendors' Solicitors, London

HERALD PRINT LONDON.

