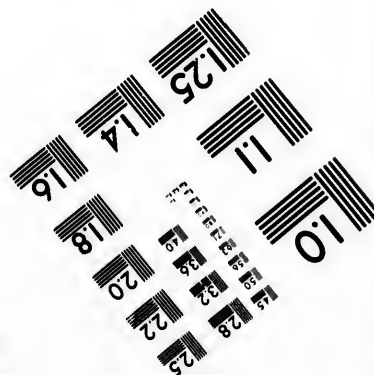


A resolution test chart featuring various patterns of vertical and horizontal lines of increasing frequency. Each pattern is accompanied by a numerical value indicating its resolution. The values include 1.0, 1.1, 1.25, 1.4, 1.6, 1.8, 2.0, 2.2, 2.5, 2.8, 3.2, 3.6, 4.0, 4.5, 5.0, 5.6, 6.3, 7.1, 8.0, 9.0, 10, 11.2, 12.5, 14, 16, 18, 20, 22.5, 25, 28, 32, 36, 40, 45, 50, 56, 63, 71, 80, 90, 100, 112, 125, 140, 160, 180, 200, 225, 250, 280, 320, 360, 400, 450, 500, 560, 630, 710, 800, 900, 1000, 1120, 1250, 1400, 1600, 1800, 2000, 2250, 2500, 2800, 3200, 3600, 4000, 4500, 5000, 5600, 6300, 7100, 8000, 9000, 10000.



Photographic Sciences Corporation

**23 WEST MAIN STREET
WEBSTER, N.Y. 14580
(716) 872-4503**



**CIHM/ICMH
Microfiche
Series.**

**CIHM/ICMH
Collection de
microfiches.**



Canadian Institute for Historical Microreproductions / Institut canadien de microreproductions historiques

© 1984

Technical and Bibliographic Notes/Notes techniques et bibliographiques

The Institute has attempted to obtain the best original copy available for filming. Features of this copy which may be bibliographically unique, which may alter any of the images in the reproduction, or which may significantly change the usual method of filming, are checked below.

L'Institut a microfilmé le meilleur exemplaire qu'il lui a été possible de se procurer. Les détails de cet exemplaire qui sont peut-être uniques du point de vue bibliographique, qui peuvent modifier une image reproduite, ou qui peuvent exiger une modification dans la méthode normale de filmage sont indiqués ci-dessous.

- ☐ Coloured covers/
Couverture de couleur
- ☐ Covers damaged/
Couverture endommagée
- ☐ Covers restored and/or laminated/
Couverture restaurée et/ou pelliculée
- ☐ Cover title missing/
Le titre de couverture manque
- ☐ Coloured maps/
Cartes géographiques en couleur
- ☐ Coloured ink (i.e. other than blue or black)/
Encre de couleur (i.e. autre que bleue ou noire)
- ☐ Coloured plates and/or illustrations/
Planches et/ou illustrations en couleur
- ☐ Bound with other material/
Relié avec d'autres documents
- ☐ Tight binding may cause shadows or distortion
along interior margin/
La reliure serrée peut causer de l'ombre ou de la
distortion le long de la marge intérieure
- ☐ Blank leaves added during restoration may
appear within the text. Whenever possible, these
have been omitted from filming/
Il se peut que certaines pages blanches ajoutées
lors d'une restauration apparaissent dans le texte,
mais, lorsque cela était possible, ces pages n'ont
pas été filmées.
- ☐ Additional comments:
Commentaires supplémentaires:

- ☐ Coloured pages/
Pages de couleur
- ☐ Pages damaged/
Pages endommagées
- ☐ Pages restored and/or laminated/
Pages restaurées et/ou pelliculées
- ☐ Pages discoloured, stained or foxed/
Pages décolorées, tachetées ou piquées
- ☐ Pages detached/
Pages détachées
- ☒ Showthrough/
Transparence
- ☒ Quality of print varies/
Qualité inégale de l'impression
- ☐ Includes supplementary material/
Comprend du matériel supplémentaire
- ☐ Only edition available/
Seule édition disponible
- ☐ Pages wholly or partially obscured by errata
slips, tissues, etc., have been refilmed to
ensure the best possible image/
Les pages totalement ou partiellement
obscurcies par un feuillet d'errata, une pelure,
etc., ont été filmées à nouveau de façon à
obtenir la meilleure image possible.

This item is filmed at the reduction ratio checked below/
Ce document est filmé au taux de réduction indiqué ci-dessous.

10X	12X	14X	16X	18X	20X	22X	24X	26X	28X	30X	32X
					✓						

The copy filmed here has been reproduced thanks to the generosity of:

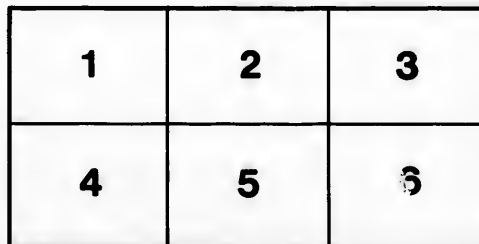
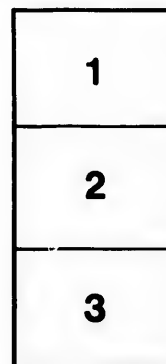
Metropolitan Toronto Library
Canadian History Department

The images appearing here are the best quality possible considering the condition and legibility of the original copy and in keeping with the filming contract specifications.

Original copies in printed paper covers are filmed beginning with the front cover and ending on the last page with a printed or illustrated impression, or the back cover when appropriate. All other original copies are filmed beginning on the first page with a printed or illustrated impression, and ending on the last page with a printed or illustrated impression.

The last recorded frame on each microfiche shall contain the symbol → (meaning "CONTINUED"), or the symbol ▼ (meaning "END"), whichever applies.

Maps, plates, charts, etc., may be filmed at different reduction ratios. Those too large to be entirely included in one exposure are filmed beginning in the upper left hand corner, left to right and top to bottom, as many frames as required. The following diagrams illustrate the method:



L'exemplaire filmé fut reproduit grâce à la générosité de:

Metropolitan Toronto Library
Canadian History Department

Les images suivantes ont été reproduites avec le plus grand soin, compte tenu de la condition et de la netteté de l'exemplaire filmé, et en conformité avec les conditions du contrat de filmage.

Les exemplaires originaux dont la couverture en papier est imprimée sont filmés en commençant par le premier plat et en terminant soit par la dernière page qui comporte une empreinte d'impression ou d'illustration, soit par le second plat, selon le cas. Tous les autres exemplaires originaux sont filmés en commençant par la première page qui comporte une empreinte d'impression ou d'illustration et en terminant par la dernière page qui comporte une telle empreinte.

Un des symboles suivants apparaîtra sur la dernière image de chaque microfiche, selon le cas: le symbole → signifie "A SUIVRE", le symbole ▼ signifie "FIN".

Les cartes, planches, tableaux, etc., peuvent être filmés à des taux de réduction différents. Lorsque le document est trop grand pour être reproduit en un seul cliché, il est filmé à partir de l'angle supérieur gauche, de gauche à droite, et de haut en bas, en prenant le nombre d'images nécessaire. Les diagrammes suivants illustrent la méthode.

errata
to

pelure,
n à

32X

MUNICIPALITY OF SPRINGFIELD,

EAST OF RED RIVER,
MANITOBA

The Municipality of Springfield, as shown by the accompanying map, is one of the most conveniently situated in the Province of Manitoba, its western boundary being only a few miles from the City Hall, Winnipeg, and the main body of the settlement being inside of 20 miles. This is an advantage not to be overlooked in selecting a new home, as the settlers in this district have at once a market for all their produce at fair prices, and are enabled to have a choice of all that they require from some of the largest stocks of goods in America. The Municipality is naturally adapted for mixed farming, the good arable land and hay meadows so lying that almost every quarter section has a proportion of hay land; the soil is of the very best, ranging from sandy loam to heavy clay, the general quality of it being very rich, and therefore it is well adapted to grow all varieties of grains and roots, a large quantity of the garden produce for the Winnipeg market coming from this district. Dairying is carried on to a large extent, the butter and cheese of Springfield always being in good demand on account of its excellent quality, and the farmers finding that they can command a good price for their dairy products are anxious to produce the very best, the excellent pasturage giving them a great advantage. Large stretches of good open farming lands, with woods and hills interspersed, give this part of the country a very park-like and comfortable appearance, which is generally pleasing to new comers, and is certainly preferable to the clear open prairie without a tree to vary the monotony. Being at the extreme east of the fertile belt is another advantage, as the Municipality is bounded on the east and north by the forests which extend to the Lake of the Woods on the east, and to the east of Lake Winnipeg on the north. These woods supply large quantities of timber, cordwood and ties, making work in the winter for parties wishing to find employment for their teams. The water supply is excellent, from both open springs around the hills and wells on the level. In a great many cases the wells are flowing. The Bird's Hill, Moose Nose Hill and Oak Hummock have inexhaustible supplies of gravel, which will no doubt be used in time to gravel the roads and in building, as concrete makes a cheap and lasting material for houses and stables. Schools, churches and post offices are well situated through the settlements, the map showing how conveniently they are placed. Public libraries are also in operation, and others can be formed as required, as the Council grants sums to help in their formation. The Municipality has two leading roads, which are graded for over 20 miles on each, besides side roads all through the settlements. The village of North Plympton, on the southern of these two roads, about 14 miles from Winnipeg, has a cheese factory, store, blacksmith shop, and a hotel and feed stable, kept by Mr. Dougald Gillespie, who is also postmaster and telephone agent, and well fitted to give information to parties looking for land in that part. A telephone line extends out to the village of North Plympton, and then on about five miles north to the secretary-treasurer's office at Oak Bank, in this way giving communication with Winnipeg, an advantage rarely possessed by a country district in any country, the convenience of which is at once apparent. As might be expected from its situation and advantages, the financial position of the Municipality, as shown by the appended statement, is excellent, and its standing in the money markets first-class. The Council some years ago having borrowed a certain sum of money to build roads, lately wished to pay off some of its debentures with its accumulated sinking fund, but had to abandon the idea, as the holders refused to sell unless at a premium of 20 per cent.

The sinking fund is now invested in the Municipality on first-class property and school debentures, bearing 7 per cent interest. The sale of lands for taxes held in October last gave a very good indication of the feeling for this part among capitalists, the price obtained on an average for the lands sold over the whole Municipality being about seven times the amount of taxes—a record very hard to beat. Parties arriving in Winnipeg can get reliable information by applying at the Board of Trade offices in the City Hall, or from the Reeve and Council, whose names and addresses are as follows:—

R. S. CONKLIN, Reeve, Sunnyside P.O.

COUNCILLORS.

Ward 1—W. H. Corbett, Springfield P.O. | Ward 4—Isaac Murphy, Dundee P.O.
 " 2—James Elmy, Springfield P.O. | " 5—Wm. Holmes, Millbrook P.O.
 " 3—Donald Scott, Cook's Creek P.O. | " 6—J. McLachlan, Sunnyside P.O.

And also the Secretary-Treasurer as below.

FINANCIAL STATEMENT.

Feb. 25, 1889.

CASH ON HAND.

Amount to pay interest, due 1st March and 1st Sept., 1889.....	\$ 3500 00
" due tax purchasers for lands redeemed.....	917 07
" tax sale fund held for original owners of lands sold for taxes.....	381 15
" Sinking Fund uninvested in bank.....	1321 00
" of balance on hand after paying all floating debts.....	8087 94
Total cash on hand and in Bank.....	<u>\$14207 82</u>

TAXES UNPAID.

Arrears to end of 1887.....	\$ 3103 96
" 1888.....	4002 22
Total tax assets.....	<u>\$ 8006 18</u>

The Municipality also purchased lands at sales of January and November, 1887, taxes of which represent about..... \$ 2500 00

DEBENTURE ACCOUNT.

LIABILITY.

Debentures due on 1st September, 1900.....	\$50000 00
--	------------

ASSETS.

Cash on hand and invested in first mortgages and school debentures.....	\$18716 06
Balance to be collected in 11 years, including interest which will accrue on investments.....	31283 94
	<u>\$50000 00</u>

AVERAGE TAXATION PER 160 ACRES.

Townships in Range 4 E, including all school rates.....	\$15 50
" 5.....	14 00
" 6.....	10 00
" 7.....	3 40
" 8.....	1 90

I certify above to be a correct statement of the financial position and also a table of taxation of the Municipality of Springfield.

WM. GOODRIDGE,

Secretary-Treasurer.

Oak Bank, Feb. 25, 1889.

SINKING FUND.

NOTICE.

Any information relating to money to lend from this Fund can be obtained from

ISAAC MURPHY,
Chairman Finance Committee,
 Dundee P.O.



C.P. RY. _____
 MAIN }
 GRADED } _____
 ROADS }
 TELEPHONE } _____
 -LINE- }

A TOWNSHIP IS SIX MILES SQUA

