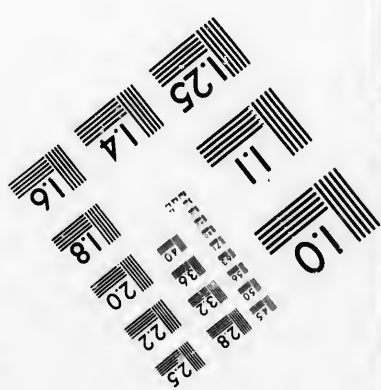
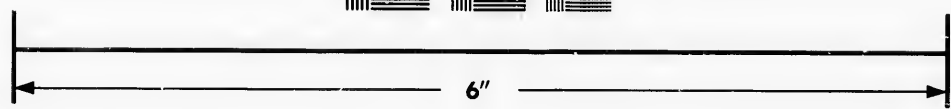
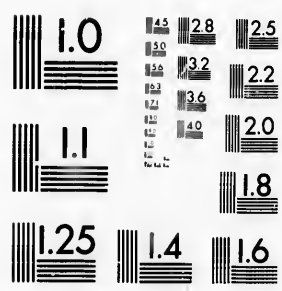


**IMAGE EVALUATION
TEST TARGET (MT-3)**



**Photographic
Sciences
Corporation**

23 WEST MAIN STREET
WEBSTER, N.Y. 14580
(716) 872-4503

**CIHM/ICMH
Microfiche
Series.**

**CIHM/ICMH
Collection de
microfiches.**



Canadian Institute for Historical Microreproductions / Institut canadien de microreproductions historiques

© 1986

The Institute has attempted to obtain the best original copy available for filming. Features of this copy which may be bibliographically unique, which may alter any of the images in the reproduction, or which may significantly change the usual method of filming, are checked below.

L'Institut a microfilmé le meilleur exemplaire qu'il lui a été possible de se procurer. Les détails de cet exemplaire qui sont peut-être uniques du point de vue bibliographique, qui peuvent modifier une image reproduite, ou qui peuvent exiger une modification dans la méthode normale de filmage sont indiqués ci-dessous.

- | | |
|--|--|
| <input checked="" type="checkbox"/> Coloured covers/
Couverture de couleur | <input type="checkbox"/> Coloured pages/
Pages de couleur |
| <input type="checkbox"/> Covers damaged/
Couverture endommagée | <input type="checkbox"/> Pages damaged/
Pages endommagées |
| <input type="checkbox"/> Covers restored and/or laminated/
Couverture restaurée et/ou pelliculée | <input type="checkbox"/> Pages restored and/or laminated/
Pages restaurées et/ou pelliculées |
| <input type="checkbox"/> Cover title missing/
Le titre de couverture manque | <input checked="" type="checkbox"/> Pages discoloured, stained or foxed/
Pages décolorées, tachetées ou piquées |
| <input type="checkbox"/> Coloured maps/
Cartes géographiques en couleur | <input type="checkbox"/> Pages detached/
Pages détachées |
| <input type="checkbox"/> Coloured ink (i.e. other than blue or black)/
Encre de couleur (i.e. autre que bleue ou noire) | <input checked="" type="checkbox"/> Showthrough/
Transparence |
| <input type="checkbox"/> Coloured plates and/or illustrations/
Planches et/ou illustrations en couleur | <input type="checkbox"/> Quality of print varies/
Qualité inégale de l'impression |
| <input type="checkbox"/> Bound with other material/
Relié avec d'autres documents | <input type="checkbox"/> Includes supplementary material/
Comprend du matériel supplémentaire |
| <input type="checkbox"/> Tight binding may cause shadows or distortion
along interior margin/
La reliure serrée peut causer de l'ombre ou de la
distorsion le long de la marge intérieure | <input type="checkbox"/> Only edition available/
Seule édition disponible |
| <input type="checkbox"/> Blank leaves added during restoration may
appear within the text. Whenever possible, these
have been omitted from filming/
Il se peut que certaines pages blanches ajoutées
lors d'une restauration apparaissent dans le texte,
mais, lorsque cela était possible, ces pages n'ont
pas été filmées. | <input type="checkbox"/> Pages wholly or partially obscured by errata
slips, tissues, etc., have been refilmed to
ensure the best possible image/
Les pages totalement ou partiellement
obscurcies par un feuillet d'errata, une pelure,
etc., ont été filmées à nouveau de façon à
obtenir la meilleure image possible. |
| <input type="checkbox"/> Additional comments:/
Commentaires supplémentaires: | |

This item is filmed at the reduction ratio checked below/
Ce document est filmé au taux de réduction indiqué ci-dessous.

10X	14X	18X	22X	26X	30X
<input type="checkbox"/>	<input type="checkbox"/>	<input checked="" type="checkbox"/>	<input type="checkbox"/>	<input type="checkbox"/>	<input type="checkbox"/>
12X	16X	20X	24X	28X	32X

The copy filmed here has been reproduced thanks to the generosity of:

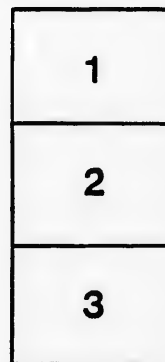
Archives of Ontario
Toronto

The images appearing here are the best quality possible considering the condition and legibility of the original copy and in keeping with the filming contract specifications.

Original copies in printed paper covers are filmed beginning with the front cover and ending on the last page with a printed or illustrated impression, or the back cover when appropriate. All other original copies are filmed beginning on the first page with a printed or illustrated impression, and ending on the last page with a printed or illustrated impression.

The last recorded frame on each microfiche shall contain the symbol \rightarrow (meaning "CONTINUED"), or the symbol ∇ (meaning "END"), whichever applies.

Maps, plates, charts, etc., may be filmed at different reduction ratios. Those too large to be entirely included in one exposure are filmed beginning in the upper left hand corner, left to right and top to bottom, as many frames as required. The following diagrams illustrate the method:



L'exemplaire filmé fut reproduit grâce à la générosité de:

Archives of Ontario
Toronto

Les images suivantes ont été reproduites avec le plus grand soin, compte tenu de la condition et de la netteté de l'exemplaire filmé, et en conformité avec les conditions du contrat de filmage.

Les exemplaires originaux dont la couverture en papier est imprimée sont filmés en commençant par le premier plat et en terminant soit par la dernière page qui comporte une empreinte d'impression ou d'illustration, soit par le second plat, selon le cas. Tous les autres exemplaires originaux sont filmés en commençant par la première page qui comporte une empreinte d'impression ou d'illustration et en terminant par la dernière page qui comporte une telle empreinte.

Un des symboles suivants apparaîtra sur la dernière image de chaque microfiche, selon le cas: le symbole \rightarrow signifie "A SUIVRE", le symbole ∇ signifie "FIN".

Les cartes, planches, tableaux, etc., peuvent être filmés à des taux de réduction différents. Lorsque le document est trop grand pour être reproduit en un seul cliché, il est filmé à partir de l'angle supérieur gauche, de gauche à droite, et de haut en bas, en prenant le nombre d'images nécessaire. Les diagrammes suivants illustrent la méthode.

ire
détails
es du
modifier
er une
filmage

es

a

errata
l to

x
e pelure,
on à



32X

POLLING SUBDIVISION NO. 1



No. on Assessment Roll	NAME.	LOT.	CON OR STREET.	No. on Assessment Roll.	NAME.	LOT	CON. OR STREET.
1	Anderson Richard	7 and 8	A	282	Fitch Arthur	s 6	A T
2	Anderson Joseph	w 103 11	A	284	Findlater Alexander	n 7	B O
	"	w 11	B	285	Ferguson John	15	B C
3	Akins William T	12	A	299	Fitzpatrick Robert	s w 14 (see sub-div. 3 & 4)	12 O
4	Anderson William	1 and 2	B	301	Ferguson William	3	13 O
29	Armstrong James	w 9	14	302	Ferguson John	4	13 O
30	Armstrong John	e 9	14	304	Finlay Alexander	3 n 5 7	14 O
31	Adams Joseph	12	15	305	Finlay William	s 5 s 6	14 O
32	Allen William	15	16	306	Finlay Charles	n 6	14 O
				94	Foster George	7	13 O
				314	Fryfogle Daniel	9	Belmore T
43	Braiden Robert	s 9	B				
44	Bullock William	10	B				
89	Baker Samuel	e 3 n e 4	12	321	Gotby John	pt 1	A T
90	Brown William	n 11	12	323	Graham George	e 11	B O
94	Beswitherick James	7	13	324	Gemmill John	w 12	B O
95	Bell James	{ n 14 } { 14 }	12 } 13 }	330	Gallaher John	16 n 17	A O
97	Boddy Thomas K.	15	13	360	Galbrath James	11	14 O
103	Braiden Andrew	1	16	361	Galbrath Edward	11	14 T
104	Braiden John	3	16	364	Galloway Robert	e 3	15 J
105	Burnett George	14	16	364	Galloway Francis	w 3	15 T
111	Burns Robert	11	16	370	Graham William	pt 7	16 T
115	Bridge George	7	17	372	Gowdy Alexander	s w 2	17 O
997	Bennett Richard	10 (see sub-div. No 5)	12	373	Gamble James	n e 2	17 T
				374	Green Edward	7	17 O
				377	Green David	5	18 T
				377	Green William	w 5	18 O
132	Clark James	3	B	942	Galbrath William	8 (see sub-div. 3)	13 O
164	Cook John	s 15	12				
168	Clegg Francis	13	13				
169	Cathers Jacob	8	14	389	Hemphill Andrew	pt 2	A T
172	Carson Hugh	9	15	392	Howlet George	e 5	B O
176	Carrs James S.	10	18	393	Higgins William J.	e 12	B O
177	Cromwell Joseph	15	18	447	Hare William	e 1 2	14 O
203	Conn James	1	16	448	Hays Robert	12	14 O
182	Culleton John	1	Belmore	449	Hamilton James	w 14	14 O
458	Cunningham William A.	13 & 14	15	450	Hamilton Richard	{ e 14 } { s e 8 }	14 } 15 }
				451	Hainstock Charles	n 15	14 T
204	Douleddee Frederick	9	A	452	Hainstock Joseph jr	n 15	14 T
205	Duffy Patrick	4	B	463	Hainstock Joseph sen	n 15	14 O
242	Dane John	4	14	454	Hainstock George	s 15	14 O
245	Dennis James	pt 7	16	457	Horton James	15	15 T
250	Deckstader Daniel	{ pt 12 } { e 11 }	17 } 18 }	458	Hainstock John	{ 3 & 14 }	15 T
260	Douglas Thomas	n 6	17	462	Halliday James	2	16 O
254	Deisman Alfred	2 & 3	17	463	Hugill Jonathan	4 w 5	16 T
		Culross-st Belmore		466	Hugill William Wild	w 3	17 O
				467	Hunter Alexander	15	17 T
				471	Hughes William C.	6	18 O
				472	Haskins John	9	18 O
273	Edgar Robert	s e 14 (see sub-div. No. 4)	12				
277	Elder John	pt 1	A sawmill	504	Irwin William	1	A O

528 Johnston John	4	18	O	463 Poinroy William	4 w 3	16	O
529 Johnston Edward	w 6	18	O				
314 Jeffry William	9 n 3	Belmore	O				
				787 Rutledge Thomson	e 1 w 2	18	O
539 Kingsley John	4	A	O	788 Ramsay John	pt 11	A	T
552 Keating Patrick	e 2 w 3	12	O	807 Rush John	5	13	O
553 King John	s 11	12	T	808 Rush Luke	7 w 8	15	O
554 King Stephen	12	13	O	810 Roe Thomas	pt 12	16	O
				811 Ritchie James	4	17	O
				812 Renwick John	13	18	O
567 Lucas John	1	17	O	814 Ross Pearson	1 & pt 2		
568 Lloyd Hiram	4	B	O		Culcross-st Belmore		O
582 Laird Alexander	8	12	O	889 Richardson Thomas	pt 2	A	O
583 Latimer Zacharias	9	13	T				
584 Lewish James	8	16	O	878 Stafford James	2	13	O
do	s 6	17	O	887 Smith John A.	s 10 (see sub-div. 2)	15	O
586 Lamony John	3 & 4	Belmore	O	888 Sangster John	n 10	15	O
				890 Stinson William	9	16	O
				891 Scott George	11 pt 12	16	O
600 Murray Joseph	n 5	A	O	896 Sudden James	9	17	T
601 Morrow Adam	s 17	A	O	do	10	17	O
609 Montgomery James	s 7 n 8	B	O	895 Sudden Thomas	9	17	O
610 McLean John	s 8 n 9	B	O	886 Scott John	11	15	O
611 Miller Andrew	13 & 14	B	O				
666 Malloy Peter	1 w 2	12	O				
667 Magill Robert	7	12	O	929 Terrill Peter	7 & 8	Belmore	O
668 McLaughlin James	n 15	12	O	930 Tremble Thomas	w 6	B	O
675 McLaughlin John R.	10	13	O	931 Tremble James	e 6	B	O
676 McLaughlin William	s 11	13	O	940 Turner Robert	ne 4 5	12	O
681 Manson John	n 1 n 2	15	O	941 Tremble John	9	12	O
682 Manson James	s 1 s 2	15	O	942 Taylor Thomas	8	13	T
683 McKinney Jeremiah	e 8	15	O	943 Thomson John	n 11	13	O
684 McKinney Daniel	11	15	T	944 Teskey Edmund	6	6	O
685 McKinney James	11	15	T				
96 McElwain John	n 14	12	T				
do	14	13	T				
693 Mawhinney John	e 3	17	O	952 Underwood Edward	e 13	A	O
do	e 5	16	O	953 Underwood John	1	13	O
694 McMichael Thomas	5	17	T	954 Underwood Joseph	w 1	14	O
698 McAfee Angus	e 2	18	O				
699 Milligan John H.	3	18	O				
700 Madill Samuel	w 11	18	O	457 Wiggins William	15	15	O
701 Muir Joseph	14	18	O	957 Wilson David	s 5 and n 6	A	O
96 Mahood Robert	n 14 (see sub-div. 4)	12	O	958 Weir John J.	n w 13	A	O
do	14	13	O	959 Weir David	pt 13 n 14	A	O
467 Munro Andrew	15 (see sub-div. 2)	17	O	960 Weir William	s 14 w 15	A	O
				960 Willits Crocket	16 and 17	B	O
				997 West John J.	10	12	T
736 Neill Joseph	e 10	A	O	998 Warrell James	12 13	12	O
787 Nay William	w 5	B	O	1001 Wilson Charles	10	14	O
741 Nay Samuel	13	14	O	1003 Wiley Hugh	5	15	O
745 Newell William	10	16	O	1004 Woods James	13	16	O
				1007 Wallace William	8	17	O
				1008 Wright James	s e 12 13	17	O
583 Potter James	9 (see sub-div. 3)	13	O	1009 Wright George	w 14	17	O
775 Page James	e 8	18	O	1010 Wright Charles	e 14	17	O
776 Pomroy John	12	18	O	1011 Wynn George	w 1	18	O
786 Peebles John	5	Belmore	O	694 Wright George	5	17	O

3
POLLING SUBDIVISION NO. 2.

No. on Assessment Roll.	NAME	LOT.	COR. OR STREET.		No. on Assessment Roll.	NAME	LOT.	COR. OR STREET.	
24	Alexander Samuel	pt 16	12	T	310	Ford Robert	17	16	O
26	Anderson George	33(see sub-div 6)	12	O	311	Frier Charles	17	18	O
27	Angst Ulrick	24	13	O					
28	Angst Solomon	w 29	13	O					
91	Bowes John	w 31	12	O	170	Griffin John	s 23	14	O
92	Bowes Robert	e 31 w 32	12	O	354	Gregg George	s s 19 s 20 (see sub-d 4)		O
93	Bowes Thomas	e 32	12	O	359	Giles William	23	13	O
98	Brown James	28	13	O	362	Gibson John	29	14	O
101	Barnes Frederick	23	15	O	363	Gibson William	33	14	O
102	Barnes Frederick sr	24	15	O	366	Gadkie Christian	w 27	14	O
106	Bradigam Ludwig	e 24	16	O			25	14	T
107	Binkley Christian	25	16	O			26	15	O
108	Browning George	39	16	O	367	Gibson Edward	33	15	T
109	Bright Leonard	31	16	O	371	Greenway Robert W	24	16	O
110	Brown Philip	32	16	O	375	Greely John	17	17	O
113	Bradigam Ludwig	w h e 26	17	O	376	Gardiner Philip	23	17	O
114	Brady Thomas	32 s 33	17	O					
117	Boylis John	30	18	O	442	Hubbard William	16	12	O
1026	Buckenthun John	18	17	O	443	Hallman Cyrus	24	12	O
1039	Biggars Nesbett	18 saw-mill, Lakelet		O	444	Harley Kasper	s 19 s 20	13	T
366	Bradwell Thomas	25	14	O	445	Henry George	e 29 w 30	13	O
					446	Hood Andrew	33	13	O
					455	Hood William	30	14	O
165	Caudel David	n 25	12	O	456	Hohnadel Valentine	32	14	T
167	Cowan William	29 30	12	O	459	Homan Frederick	s 18	15	O
170	Caip Henry	s 23	14	T	460	Hazelwood George H	s 21	15	O
171	Cook John	24	14	T	461	Hood James	30	15	O
173	Crandall Byron	56	16	O	468	Hooper Charles	38	17	O
174	Cook Nicholas	e 25	17	O	469	Hadson John	30	17	T
175	Clark John	24	17	O	470	Heath Lewis	31	17	T
178	Campbell Donald	26	18	O	474	Hill William	18	18	T
179	Campbell Farquhar	26	18	O	475	Harrison George	18 19	18	O
877	Cheves William	n 21 n 22	13	O	476	Hall William	20	18	T
					477	Hoiles Richard	21	18	T
					478	Harbottle George	w 22	13	O
243	Dicket John	w 27	15	T	479	Hazlewood James	pt 18 pt 19	15	O
247	Dettman Frederick	19 w 20	17	T	480	Halliday William	pt 18	15	O
248	Dixon Robert	21 22	17	T			21 and 22 Lakelet		O
249	Dunford John	32	17	T	481	Hazelwood William C	23 and 24 Lakelet		O
251	Drummond John	28	18	O	736	Hubbard Thomas	8 and 9 Lakelet		O
252	Drummond Alexander	29	18	O					
					510	Ingram Charles	s 21	16	T
274	Eaton Robert	u 20 n 21	14	T					
275	Ehmke Charles	e 27	14	O	257	Jacques John W	16 and 17	18	O
276	Eidt Ludwig	s 31 s 32	18	O					
281	Frazer William	33	18	O	113	Krueger Charles	w hf of e 20	17	C
300	Ferguson John	s 23	13	T	555	Kline Henry	31	14	O
307	Ferguson Robert	16	14	O	556	Kitely George	s 19 s 20	15	O
308	Ferguson Robert H	u 20 n 21	15	O	557	Killinger Christian	28	15	O
309	Ford James	16	16	O	558	Kidd Andrew	20	16	O
					559	Kruger Frederick	e 20	17	T

560 Krueger William 26 14
 561 Kemp James 21 18

 585 Locking Alexander 23 16
 " " 27 18
 599 Loventz Jonas K. n 16 n 17 . . . 18

 669 Montgomery Andrew 17 n 19 nw 20 12
 660 Montgomery William 18 s w 19 e 20 12
 671 Milne William 21 12
 672 Milne Robert 22 12
 673 Milne John s s 25 12
 674 Meier Jacob 27 12
 677 McIntyre Gilbert n 21 n 22 . . . 13
 678 Milne Peter pt 20 14
 " " s 21 s w 22 . . . 13
 679 Mahood Joseph 17 14
 687 Milligan Richard 29 15
 688 Milligan Peter 31 15
 689 Milligan James 27 16
 690 Milligan John jr 28 16
 691 Murray Robert 30 16
 692 Matthews Aner 33 16
 695 Milligan John sr 27 17
 697 Mathewson James n 33 17
 702 Munro Andrew 24 (see sub-div 1) 1
 " " 25 18
 705 McDonald William pt 19 15
 " " 13 and 14 Lakelet
 706 McDonald James pt 19 15
 469 Marshall Anthony 30 17

 742 Neill Samuel 28 14
 743 Neill James w 32 15
 744 Neill William e 33 15

 754 Ortman John s e 22 13

 768 Phair Ezekiel 25 13
 771 Porterfield John e 30 13
 772 Peterson George S 19 14
 772 Peterson Jacob 19 14
 773 Philip Peter e 27 15
 777 Pepper John n 31 18

 809 Rutledge Robert s 16 s 17 . . . 15

583 P
 775 P
 776 P
 786 P

O 877 Shuter Henry 28 12 o
 O 879 Sanders James n 19 n 20 13 o
 " " s 20 14 o
 880 Spotton Arthur 27 13 o
 881 Sanders William 92 13 o
 O 882 Scott Adam s hf n hf 20, pt 22 14 o
 T " " s 21 14 o
 884 Smith William J s w 23 14 T
 885 Smith Alexander n w 23 14 T
 887 Smith John A 18 (see sub-div 1) 14 o
 O 889 Scott James 22 15 o
 O 892 Stock Conrad n 21 16 o
 O 893 Sharpin John 22 16 T
 O 895 Smith George E 23 16 T
 O 897 Sangster James s 16 18 o
 " " w 16 17 o
 T 898 Sangster Alexander e 16 17 o
 O 899 Scott Walter 23 17 o
 O 901 Seppel George w 25 17 T
 O 902 Sims George W 25 18 T
 O 909 Scott John 5 6 7 19 20 25 28 29 Lakelet o
 " " 30 n 27 and mill priv. " o
 " " 18 15 o
 " " 18 16 o

 O 956 Vogt Sebastian 26 13 o

 O 989 Wilkie William 26 (see sub-div. 4) 12 o
 O 999 Wigner Martin n 23 12 o
 O 1000 Wiggins Robert 18 13 T
 O 1000 Wiggins Henry 18 13 o
 1002 Wagoner John O 24 14 o
 1005 Williamson John 19 16 o
 1006 Wright George pt 23 16 o
 1013 Witmer John e 22 w 23 . . . 18 o
 o 1014 Witmer Abraham e 23 18 o
 o 1025 Woelf Charles 18 17 o
 o 1029 Wightman William 26 17 o
 367 Welsh James 33 15 o
 599 Wynn Anthony n 16 n 17 . . . 18 o

 1035 Young Myles n 16 n 17 . . . 15 o
 1037 Young William pt 18 pt 19 15 . . T
 " " 11 and 12 Lakelet T
 O 1038 Young Richard 4 32 33 34 Lakelet o
 T " " Island Point o
 " " 18 and saw mill do o
 T 1037 Young Henry W pt 18 pt 19 . . . 15 o
 O " " 11 & 2 Lakelet o

 O 1048 Zeirke John 25 15 o

POLLING SUBDIVISION NO. 3.

No. on Assessment Roll.	NAME.	LOT.	CON OR STREET.	No. on Assessment Roll.	NAME.	LOT.	CON. OR STREET.
17	Anderson William	n 8 I 0	322	Greer Robert	pt 19 A O
"	"	n 9 8	do	161 162 163 208 214 215	Howick village	O
21	Astleford Joseph	s 11 I 0	325	Graham John	22 e 27 e 28 B T
35	Ardell Joseph	240, 241	Howick village	327	Griffith Samuel	23 B T
"	"	park 26,	"	328	Griffith Hamilton	23 B O
36	Ardell William	" 21,	196 197 do	329	Gibson Robert	e 26 n e 27 B O
38	Allen John	78 and 79	Howick Vill	331	Gibson Alexander L.	e pt w 28 B O
1045	Akins William	brick block north store	4, Howick Village	332	Gibson Thomas	29 B O
84	Brimner Charles	1 I 0	340	Gilpin Thomas R.	2 (see sub-div. 5)	7 O
85	Ballantine Duncan	2 I 0	344	Greer Samuel	5 7 O
86	Baird Robert	4 I 0	345	Greer George	6 s 7 7 O
126	Blackstock James	185 186	Howick vil.	do	36 37 63 & 64	Howick village	O
129	Besanson Henry	185	do	346	Gildner Henry	s 9 8 O
131	Boyer Thomas	parke 7 8 9	do	do	9 7 O	
731	Burrows Henry	pt park 15	do	350	Gallaher George	e 3 10 O
133	Condy James	w 28 B	352	Graham James	n 6 10 O
155	Copeland James	w 3 I 0	353	Graham Richard	s 6 10 O
156	Carson William	n 10 I 0	383	Green William	246 247 248 249 296 297	298 299 245 & 300 Howick village O
157	Clark William	s 9 s 10 I 0	384	Gilmore Samuel	146 147 & 175	do O
158	Clark Joseph	s 9 s 10 I 0	387	Gallaher Hubert w	165 & 166	do O
195	Croskery James	6	Howick village	385	Galbrath William	237 & 288 (see sub-div. 1) Howick village	T
194	Cooch William	44 45	do	390	Holtzauer John	n 18 A T
200	Clegg William H	68 81	do	do	pt 7 and 8 8 O	
201	Crookshanks John	n 6 I 0	420	Hueston William	n 7 7 O
84	Campbell James	1 I 0	do	pt pk 6	Howick vill. O	
325	Crawford James	22 B	421	Hastie William jr	1 8 O
206	Docherty Tomlinson	e 30 B	422	Hastie William sr	2 w 3 8 O
227	Dane John	5 I 0	423	Heibine Charles	n 7 8 O
228	Day William G.	s 6 I 0	435	Hueston William	7 11 O
229	Day John	s 6 I 0	436	Harding John	s 9 s 10 11 O
230	Dane Mathew	w 7 I 0	437	Harding Henry	s 9 s 10 11 O
231	Dane William	e 7 w 8 I 0	299	Harris Nelson	11 11 O
232	Dane George	e 8 I 0	495	Hayden John	191 & 192 (see sub-div. 5) Howick village	O
238	Dane William	e 3 4 I 2	497	Holmes Thomas G.	s 11	do T
do	do	s 4 I 2	498	art William	176	do O
239	Day Edwin E.	5 I 2	499	Harris James	67 and 82	do O
257	Dorland Stephen	232 233 s pt 231 & 200	Howick Village	500	Harris Richard E.	166	do O
260	Day George	pt park 16	Howick Village	501	Hughes Nathaniel	216 217 266 267 268	do O
268	Ellis James	n e 3 8	502	Hughes Elisha	270 271 272 273 274 275	do O
270	Evans William	2 9	do	276 277 sawmill	268 & 269	Howick village O
272	Ellis George	2w 3 11	508	Ireland Josiah	w 3 9 T
280	Earngey William	10 8	do	Ireland James W.	w 3 9 O
283	Finlay William	pt 29 A	513	Johnston William	w 30 B O
299	Fitzpatrick Robert II	(see sub-div I. 4)	II	518	Jardine Thomas	3 and 4 7 O
317	Ferguson Duncan	138 139	Howick village	do	s 4 7 O	
318	Fallahay Henry	29 & 110	do	519	James Edward	s 4 8 O
				do	park 24	Howick vill. O	
				525	Johnston George	e 3 w 4 9 O
				535	Jackson Abraham	152 & 153	Howick village O

POLLING SUBDIVISION NO. 4.

iv. 1) 11 O
4 306 308
wick village O
do O
do O
do T
do J
do T
do O
do O
pks do O
A O
A C
A O
A O
s, 149, O
ck village O
do O
131, 132, O
ck village O
do O
do O
do O
do O
8 O
0.....10 O
pt 29 .. A O
6.....9 O
.....9 O
.....9 O
wick village O
e sub-div. 5) O
ck village O
4 35, 15 & O
wick village O
73 74 do O
0 e p164 do O
..... do O
..... 9 C
..... 9 O
51 252 253 O
wick village O
165 do O
168 do T
168 do O
..... B O
..... B O
26 & 27 B T
..... 9 T
wick village T
do T
..... 7 T
..... 7 O
wick village O
49 do T
k block 4 do T
..... 8 O

No. on assess- ment Roll	NAME.	LOT.	CON OR STREET.	No. on Assess- ment Roll	NAME.	LOT	CON. OR STREET.	
18	Adair David B.	n 25	8	T 240	Dynes Richard	18, pt 17	11 T	
22	Akins John	w 15	11	O 241	Dynes John	18 pt 17	11 T	
23	Akins Thomas	e 15	11	T 255	Driver Joseph	1 Louisa-st	Fordwich O	
20	Anderson John	17	9	O	"	1 Edward-st n	" O	
72	Birney William J	e 23	6	O	577	Dulmage Richard	24..... 7 O	
73	Birney George	w 23	6	O	714	Danzer Joseph	7 Edward-st s, Fordwich O	
78	Brown William jr	e 24	8	O	"	"	7 and 8 Alice-st n " O	
80	Brown Andrew	w 24	8	O 266	Evans John	25	6 O	
"	"	25	9	O 267	Elliott William	13	7 O	
122	Brown John	1 Adelaide-st n	Fordwich O	O 269	Ernst Samuel	19	8 O	
"	"	1 Albert st s	" O	O 273	Edgar Robert	e 14(see sub-div 1)	11 O	
123	Badters Thomas sr	30 park lot	" O	O 294	Fisher Donald	14	7 O	
124	Bell Henry	7 Adelaide-st s	Fordwich O	O 296	Fallis Richmond	pt 20	8 O	
"	"	29 park	" T	T 297	Ferguson Edward	17	10 O	
911	Bell John H.	letter A, louisa. st	" T	O	"	s w 17	11 T	
146	Corbet John	w 24	6	O 298	Fleming John	25	10 O	
148	Clegg Robert	15	7	O 299	Fitzpatrick Robert	w 14(see sub-d 1 & 3)	11 O	
149	Crawford Alexander	14	8	O 342	Gibson Robert	e 22	6 O	
52	Collins Richard	w 22	9	T	"	e 22	7 O	
153	Collins Hugh	e 22	9	O 334	Gibson William	w 22	6 O	
154	Craig John	25	9	O	"	16 Louisa-st, Fordwich	O	
159	Crawford William	22	10	O	"	n 15 & 16 Edw.-st	" O	
160	Culp George	e 23	10	T 347	Gibson Thomas	Louisa-st n	" O	
160	Collins Christopher	e 23	10	O	"	16 Mary-st. n	" O	
160	Carrothers Mathew	13	11	O	"	w 22	7 O	
162	Carrothers Hugh	13	11	O	351	Graham Francis	w 23	10 O
185	Cowan Joseph	4 sub mill res.	Fordwich T	O 354	Gregg George	n 19 n 20	11 O	
"	"	12 Margt-st s	" O	O 355	Graham Alexander	w 23	11 O	
186	Carter Richard	19 park	" O	O 356	Graham James	e 23	11 O	
188	Coon Levi	s 2 Pat'k-st w	" O	O 381	Gough George	.2 sub-d. mill res.	Fordwich O	
"	"	20 21 and 22 parks	" O	O 382	Girvin James	s 9 Margt-st n	" T	
189	Chamberlain William	s w cor 23 pk	" O	O 424	Hummason Andrew	12	9 O	
190	Cook Benjamin S.	8 Ad'e-st n(see sub-d 5)	" O	O 425	Hassard George	14	9 T	
"	"	8 e 7 Alb't-st s	Fordwich O	O 425	Hassard John	14	9 O	
191	Campbell Thomas	5 Alb't-st(see sub-d 6)	" O	O 427	Hunter James W	pt 15 16	9 O	
"	"	10, 11, 12 Ade.-st s	Fordwh O	O 428	Howard Hugh H	16	10 O	
"	"	pt 9 Mary-st, 3 4 Water-st	" O	O 430	Harris Daniel	20	10 O	
"	"	8 Mary st. n	" O	O 431	Harris Francis C.	21	10 T	
193	Carter John	13, 14, Alb't-st n	Fordwich O	O 438	Hamilton William J.	e 25(see sub-d 6)	11 O	
"	"	13, 14, 15, 16, Vict.-st	" O	O	"	8 Adelaide-st	Fordwich O	
194	Carter Henry	27 park, ..	Fordwich O	O	"	23 pt park	" O	
202	Chenoweth William	w 17	8	O	484	Hooker Charles	I Adelaide-st s " O	
221	Downey James sr	w 25	7	O 485	Haley Francis B. B.	4 Louisa-st n	" T	
222	Downey James jr	e 25	7	O 487	Hinds Richard	3, 6, 7, 10, 11, sub-d mill res	O	
225	Douglas John	24	9	O 488	Hinds William	letter E, Edw.-st n	" O	
233	Deachman Robert	w 13	10	O 489	Hamilton George K.	24 s w park, Fordwich	O	
234	Dennis Richard	14	10	O 490	Harris Edward B.	.9 & 10 Alb't-st n	" O	
235	Dane Thomas	18	10	O	"	9 & 10 Vict-st s	" O	
236	Davidson Thomas	19	10	T 493	Hindman Alfred	.18 pt park	" O	
236	Dane James	19	10	O 494	Hazelwood Richard	11 & 12 Alb't-st s	" O	

821	Hallman John C	pt 22 park s mill	"	o	818	Rogers Oliver	3 Louisa-st n, 3 Mary-st	"	T
	"	pt 13 park	"	o			s Fordwich	"	o
509	Irwin Charles	12	10	T	819	Rogers Calvin	2 Louisa-st n 2 Mary s	"	o
509	Irwin William	12	10	o	820	Roe Samuel, letter o	Patrick st n, Fordwich	"	o
					821	Reichard Samuel, s mill 23, pk, pt 18 pk	"	"	o
520	Johnston William	23	7	o	857	Scott John	s 16 s 17	6	T
521	Johnston Alexander S	25(see sub-d 6)	8	o	858	Smeckhard Henry	n 16	6	o
531	Jackson Henry	1 Patrick-st Fordwich	"	o	859	Sothorn William	18 n 17 (see sub-d 5)	6	o
	"	4 Louisa-st n	"	o	860	Sothorn John	19	6	o
485	Jackson G	4 Louisa-st n	"	o	862	Strong William	18	7	o
					863	Stephenson James S	23	8	o
577	Legger Robert	24	7	T	872	Spotten John	15	10	o
588	Latham John	5 sub-d mill res. Fordwich	"	o	874	Strong George	w 24	11	o
"	"	pt 18 pk, 6 Adel-st	"	o	875	Strong Thomas	e 24, w 25	11	o
"	"	13, 14, 15, 16 Alfd-st	"	o	905	Sanderson James	10 Mary-st s, Fordwich	"	o
"	"	13, 14, 15, 16 Helen-st n	"	o	906	Sothoran Samuel	1 sub-d mill res	"	o
					907	Shaw William e 2 Louisa-st s, e 2	"	"	o
						Edw-st n, 4 park	"	"	o
631	Mee Joseph	16	7	o	908	Snell Elon	5, 6 Adelaide-st n	"	o
652	Mee George	e 18	8	o	910	Smith James Irwin let. A	Louisa-st s	"	T
653	Mahood Robert	se 20(see sub d 1)	8	o	912	Stanway Henry, 4 Edw-st n, 6 9 pks	"	"	o
656	Miller John	s e 15	9	o	913	Shreiner Paul, 11 Louisa-st n, e 10	"	"	o
657	McLaughlin Charles	w 18	8	o		Mary-st s, 11 Mary-st n	"	"	o
	"	21	9	o	914	Strathy David B, store cor. Pat'k &	"	"	o
659	McLeod Roderick	24	10	o		Louise-sts, 5 6 7 8 Alfd st n, 5 6,	"	"	o
661	Montgomery John	17, 18	11	o		7 2 Alice st s	"	"	o
662	Milne James A	s 19 s 20	11	T	915	Strathy James B, 11 12 Mary st n,	"	"	o
663	Milne David S	s 21 s 22	11	o		13, 14 Mary-st n, 13 14 Mary-st s,	"	"	o
707	Milne Alexander	24 n e cor pk Fordwich	"	o		1 2 Alice-st s	"	"	o
708	Mitchell Arthur	5, 6 Louisa-st s	"	o	916	Spinks John	5 6 Edw-st s, 5 6 Alice n	"	o
	"	6 Edw-st n, letter B	"	o	926	Sweetman J. J. 10, 15 Louisa-st n,	"	"	o
	"	3 park	"	o		15 Louisa-st s, pt 23 pk, s 9 Mary	"	"	o
709	Matthews James	8, 9 sub-d mill res	"	o		st s, 28 park	"	"	o
	"	3, 4 Edw-st s	"	o	927	Sanders John	8 park	"	o
	"	3 and 4 Alice-st n	"	o	928	Sothoran Edward	5 6 Water-st, 12	"	o
	"	3 and 4 Alice-st s	"	o		Vic-st s, 12 Albt-st n, s 16 con 6,	"	"	o
	"	1, 2, 3 Helena-st	"	o		s 17 con. 6	"	"	o
	"	1, 2, 3 Alfred-st s	"	o			"	"	o
	"	1, 2, 3 Alfred-st n	"	o			"	"	o
	"	1 park	"	o	937	Totten George	e 24	6	o
710	McDermid James,	3 Edward-st n (See	"	o	946	Thomas Edmund	1 Louisa-st n, 1	"	o
		sub-div 5).	"	o		Mary-st s	"	"	o
712	McMain James,	5, 6, Helena-st n Fordwich	"	o	947	Tidy David	2 3 Adelaide-st s, 2 3	"	o
	"	5, 6, Alfred-st s	"	o		Adelaide-st n, 2 3 4 Albert-st n, 2	"	"	o
713	Mills George T	1, 2, Edward-st s	"	T		3 Albert-st s	"	"	o
	"	1, 2, Alice-st n	"	T			"	"	o
714	McDonald Robert,	7 Edward-st s	"	T	982	Wade William	n 16 17	5	o
	"	7, 8, Alice-st n	"	T	988	Wilson John	12	7	o
715	McLaughlin John	4 Alice st s,	"	o	988	Wilkie William	12 3 w 15	8	o
		letter D, Edward-st n	"	o	991	Wilson John	13	9	o
718	McLean John	7, 10, 11, 12, 25 26	"	o	992	Wiggins Thomas	20	9	o
		31, 32 pks, 14 Louisa-st n, 13, 14 Lou-st s	"	o	994	Watters John	12	11	o
740	Nay Robert	e 17	8	o	995	Wiggins John T	16	11	o
746	Noice Thos,	1 my-st n, 3 Louisa-stw, Fordwich	"	o	996	Wright Adam	n 21 n22 n23 11	o	o
747	Noice Edwrrd A,	w 2 Edw-st n, w 2	"	o	1027	Wilson Thomas	n 9 Alfred-st n, 10	"	o
		e 3, Louisa-st s	"	o		11 Louisa-st s, 11 Edward-st n, 12	"	"	o
748	Newton Henry,	s 4 Lou-st s, 2 pk	"	o		Edw-st s, 9 Alfred-st s, saw and	"	"	o
749	Newton Robert,	13, 14, Adelaide-st	"	o		grist mills, 13 16 pt 23 pks(see sub	"	"	o
		s, 15, 16, Adel'd-st n, 15, 16, Alb't-st	"	o		div. no. 6)	"	"	o
763	Preston David	16, e 15	8	o	1028	Walker William G.	7 8 9 10 11	"	o
764	Preston Alexander	16 e 15	8	o		13 Water-st, 2 3 4 Mary-st s, pt	"	"	o
765	Padfield George	e 13	10	o		9 Mary-st s	"	"	o
770	Pyle Robert	18	7	o			"	"	o
	"	19	7	T	1032	Young Alexander	18	9	o
910	Parker Simon,	letter A, Louisa-st s	"	o	1033	Young Peter	18	9	o
806	Rogers Joel	9 Alice-st s (see div. 6) Fordwh	"	o	1034	Young Alexander	19	9	o
		11 Mary-st s, s 21, con 5, 21 22 con. 8	"	o	1040	Young James	saw-mill Fordwich	"	T

POLLING SUBDIVISION NO. 5.

n, 3 Mary-st
 s Fordwich T
 n 2 Mary s
 k st n, Fordwich o
 pk, pt 18 pk " o
 5 s 17 6 T
 6 6 o
 (see sub-d 5) 6 o
 6 6 o
 7 7 o
 8 8 o
 10 10 o
 11 11 o
 4, w 25 11 o
 y-st s, Fordwich o
 mill res " o
 ts, e 2 " o
 " o
 de-st n " o
 uisa-st s " T
 n, 6 9 pks " o
 t n, e 10 " o
 " o
 Pat'k &
 st n, 5 6, " o
 " o
 Mary st n,
 Mary-st s, " o
 " o
 5 6 Alice n " o
 uisa-st n,
 s 9 Mary " o
 " o
 " o
 ater-st, 12
 16 cen 6, " o
 " o
 4 6 o
 a-st n, 1
 Fordwich o
 st s, 2 3
 rt-st n, 2 " o
 " o
 16 17 5 o
 7 7 o
 3 w 15 8 o
 9 9 o
 9 9 o
 11 11 o
 11 11 o
 21 n 22 n 23 11 o
 d-st n, 10
 d-st n, 12
 saw and
 ks(see sub
 Fordwich o
 9 10 11
 y-st s, pt " o
 " o
 9 o
 9 o
 9 o
 9 o
 mill Fordwich T

No. on Assessment Roll.

NAME.	LOT.	CON OR STREET.
5 Adam John	36	B
11 Aylsworth Peter P.	7 n 6	6
12 Ashton William	13	6
40 Boyd John	e 31	A
41 Boyd Thomas	e 31	A
42 Bennett Richard	36 & 37 (see sub-d 1)	A
45 Buttimer William	32	B
46 Bryans William	s 11 s 12	C
47 Blair James	s 15 s 16 s 17	C
48 Blair Wilson	s 15 s 16 s 17	C
49 Beldon Jeremiah	s 25 s 26 s 27 s 28	C
50 Ball William	n 18	C
50 Ball James	n 18	C
51 Ball John H.	n 19	C
52 Balar Christian	w 16	1
53 Bast Jacob	e 16 w 17	1
54 Brown Thomas	18	1
58 Burkholder John	12	2
61 Batters Thomas jr	7	3
62 Bainback Otto	{ w 19 e 18	2 3
67 Baird William	15	4
69 Bradnock David	9	5
70 Batters William	12	5
71 Burrows Joshua	3	6
574 Bruce J.	16	4
134 Campbell Robert	n 25 n 26	C
135 Campbell Richard	w 24	2
136 Campbell James	13	2
138 Cathers John	w 8	3
139 Cooper Edward	17	3
140 Carroll Joseph	17	4
141 Campbell George	18	5
144 Catherwood Joseph	n 3 (see sub-d 6)	4
975 Cook Benjamin S.	e 13 16 (see sub-d 4)	3
207 Doig Andrew	32	C
209 Pocket William	8	1
213 Doig Paul	s 1 2	3
214 Dilsworth Henry	n 20	3
217 Douley John	5	5
261 Earls John	22	C
262 Edgar Alexander	9	3
263 Edgar James	{ 10 11	5 4
42 Earls James	36 and 37	A
505 Earls Robert	33	A

No. on Assessment Roll.

NAME.	LOT	CON. OR STREET.
T 286 Farrell Samuel	s 38 s 37	C O
O 287 Fletcher Adam	15	2 O
O 288 Fletcher William	16	2 T
289 Fletcher Edward	16	2 O
290 Faust Adam	e 18	2 O
O		
O		
T 326 Griffith John	w 31	A O
T 333 Granger John	21	C O
O 334 Greasley James	n 23 n 24	C T
O 335 Gibson Thomas	pt 19 n 20	C O
T 337 Gowan Samuel	10 n 11	2 O
O 338 Graybiel Edward	e 20 (see sub-d 6)	4 O
T 340 Gilpin Thomas R. 6 & 7	(see sub-d 3)	5 O
O 341 Gallacher Ebenezer	8	6 T
O 388 Gadkie Frederick	15	8 O
O 796 Geiger Samnel	e 13 16	3 T
O 402 Gilpin William J.	13 and 14	4 O
O		
O		
O 407 Hayden John	14 (see sub-d 3)	2 O
O 391 Hooper Sebastian	32	A T
O 394 Henderson Thomas	34	B T
O 395 Heritage Thomas	35	B T
O 396 Hislop George	s 13 s 14 s 19 s 20	C O
C 398 Hislop Adam	n 15 n 16	C T
T 399 Hepinstall Peter	e 12 w 13	1 O
O 400 Hepinstall Oliver S.	w 12	1 T
401 Hepinstall Robert	e 13	1 O
402 Herdman Thomas	pt 14 15	1 O
do	13	4 T
O 403 Hoppermill John	e 19	1 O
O 407 Hayden William	14	2 T
T 408 Haford Wendell	e 19	2 O
O 410 Hollingshead Hugh	3 w 4	3 O
O 411 Hosey Francis	w 18	3 O
O 413 Hicks Simon	n 6 n 7	4 T
T 414 Hughey Robert	10	4 T
O 415 Herdman Samuel	14	4 T
O 419 Funt Joseph	s w 6 3	6 O
O		
O 505 Ireland Robert	38	A T
O 506 Ireland Andrew	38 and 39	B T
O 506 Ireland Allen	38 and 39	B O
O		
O		
514 James William	6	2 T
515 Jacques Chipman	9	2 O
16 Jardine John	3	5 O
T 517 Jameson Robert	e 15	5 O
O		
O 541 Knox Adam	n 13 n 14	C O
O 541 Knox John	34	A O
O 545 Kately Nelson	19	3 O

570 Leiper William s 35 C
571 Leopard Jonathan w 19 1
572 Locke Zopher w 13 3
573 Lambkin John G. 14 3
574 Lelond Jeremiah I6 4
575 Little Simon n 15 5

136 McDermid James 13 (see sub-d 4) 2
614 Malcolm Archibald 33 B
615 Miller Thomas 37 B
616 Miller Andrew 37 B
617 McLennan Thomas s 18 C
618 McAllister John 31 C
619 Morren Peter s 36 C
620 McKee William 39 40 C
621 Murray Robert n 37 n 38 C
622 McLeod John n 35 n 36 C
623 Menzie John 6 and 7 1
624 McLaughlin George n 17 2
625 McLaughlin Levi w 17 2
626 McLaughlin James e 17 w 18 2
627 McDermid John 20 2
634 Moir William n 1 3
635 McKee John e 4 sawmill & priv. 3
636 McGuire Benjamin n pt 5 3
637 McClament Ferguson 10 3
638 McDermid Allen 12 3
639 McKercher William 1 and 2 4
640 McGuire John w 4 4
641 McGuire Thomas e 4 4
642 McLaughlin Robert jr 5 4
642 McLaughlin Robert sr 5 4
642 McKay Ebenezer 18 w 19 4
644 Miller William 4 5
645 Mitchell James 4 6
646 McLaughlin James pt 6 6
647 Mosgrove Robert 10 6
648 Mosgrove Stewart 11 6
649 McKay Joel 12 6
395 Miller Robert pt 35 B
395 Miller George pt 35 B
416 McLaughlin Alexander 10 4
514 Muirhead James 6 2
861 McLaughlin John 14 (see sub-d 4) 6

738 Neild George A. e 4 2
739 Nash Thomas s 5 6

752 Oberholtzer Isaac 5 2
753 Overend Joseph 1 5
do 22 C

761 Patrick Peter 23 and 24 C
758 Patrick Hugh s 23 s 24 C
761 Proudlove John s 5 3
do n e 5 2

792 Robertson Alexander 29 and 30 C o
793 Rolph Thomas 9 e 10 1 c o
794 Rolph Richard 11 1 o
796 Rolston John s 3 4 c
797 Roberts John pt 6 pt 7 1 o
798 Roe James 12 4 o
800 Roe Jesse 14 5 T
801 Roe Richard 13 5 T
802 Robinson James 20 5 o
804 Robinson Thomas 15 6 o
817 Ross James R. 7 and 8 2 o

141 Sotheran William 18 (see sub-d 4) 5 o
832 Sanderson William 9 6 o
833 Sanderson David 2 5 o
835 Sanderson Joseph 35 A o
836 Sanderson John 31 B o
837 Sharpin Richard n 33 C o
838 Sharpin Mathew s 33 s 34 C o
839 Sharpin John s 33 s 34 C T
840 Smith Christian C. s w 14 1 o
841 Smith Jacob e 17 1 o
842 Shaver Frederick 20 1 o
843 Self Robert n e 5 2 T
844 Shepherd Francis s 11 2 o
845 Snyder Amos 11 3 o
847 Smith Henry 8 w 9 1 o
850 Sparling Edwin 8 5 o
851 Sotheran John Ford 19 5 T
854 Sanderson William 1 6 o
855 Sanderson Mathew 2 6 o
do 32 B o
856 Stinson John n 5 6 o
861 Shaw John 14 6 T
413 Smith Henry sen n 6 4 o
413 Smith Joseph D. n 7 (see sub-d 3) 4 o

932 Thomson William n 11 n 12 C o
936 Townsend Henry E. e 9 4 o

931 Vogt John B. 32 A o

965 White James n 34 C o
966 Warnock Samuel n 27 n 28 C o
970 Wakeford Thomas 23 2 o
973 Wiggins John 6 3 o
974 Walker Robert e 8 3 o
975 Wideman Peter e 15 16 3 T
978 Witmer Emanuel e 19 n w 20 4 o
881 Walker Thomas 11 5 o

1046 Zimmerman Philip s 6 s 7 4 o

POLLING SUBDIVISION NO. 6.

No. on Assessment Roll	NAME.	LOT.	CON OR STREET.	No. on Assessment Roll	NAME.	LOT	CON. OR STREET.
6	Andrew William sr	s 21	2	T 263	Ellis William M	26	3
	"	n 21	1	T 264	Elliott William	s 30	3
7	Aldrick Moses	n 26	2				
7	Aldrick Paul	n 26	2				
8	Andrew William	n 25	3				
10	Armstrong George	28	5	O 291	Fries Peter	s 31	2
13	Armstrong Edward	28	6	O 292	Fleming Norton	e 25	4
13	Armstrong William	28	6	T 293	Foster James	30	6
14	Armstrong John	29	6	O 315	Franklin John	n 25	8
15	Armstrong William	28	7	T	"	n 23	1
16	Anderson William J	27	7	O 319	Fisher Andrew	e 29	4
26	Anderson George	33 (see sub-d 2)	11	O 320	Farrend Charles	n 30	3
					pt 3 con 4, n 31 con 2, 1, 2, 6, 7 Newbridge, grist & saw mills		
56	Brothers Montezuma	s 30	1				
57	Bohlander Adam	31	1	O 336	Gallagher James	n 30	1
59	Bender Burket	e 24	2	O	"	s 30 s 29	2
64	Bolton George	n 21	3	O 338	Graybiel Edward	22 (see sub-d 5)	4
65	Botham Mathew	e 24	3	O 339	Gambell Robert	w 24	4
66	Bolger Thomas H	28	3	O 357	Gotz Conrad	e 29	11
68	Bolger Thomas	n e 23 w 29	4	O	"	w 29	11
74	Bushert Jonathan	w 27	6	O 378	Graham Leckie	8, 9 Newbridge	
75	Bushert Abraham	e 27	6	O	"	w 29	11
76	Bender Jacob	w 29	7				
77	Brown William sen	27	8				
79	Barr Alexander	31	8	O 404	Hargrave George	s 26	1
81	Brown Stephen	27	9	O 405	Hargrave James O	26 n 27	1
82	Barr James	29	9	O	"	s 26	2
83	Barron Alexander	33	9	O 409	Hobercost Frederick	n 29 n 30	2
88	Bradigam Frederick	w 28	11	O 412	Harris James	27	3
118	Bride William	pt 30	2	O 416	Holt Anthony	21	4
63	Bolton Reuben	s 21	3	T 417	Hindman Samuel	31	5
				O 418	Hindman Campbell	w 31	7
				O	"	s 32	6
				O	"	32	5
				O 432	Harding Robert	28 w 29	10
142	Clegg James	s 25	5	T 433	Hardy Yeost	32	10
143	Clegg John	s 25	5	O 434	Harding Samuel	e 29 30	0
144	Catherwood Joseph	e 27 (see sub-d 5)	5	T 438	Hamilton William J	26 (see sub-d 4)	11
150	Clark Samuel	27	11	O 439	Harding Edward	30	11
	"	28	8	O 578	Hanson Thomas	e 29 30	7
151	Campbell Edward	e 29	8				
181	Campbell Neill	pt 30	4				
319	Campbell Thomas	e 29 (see sub-d 4)	4	O 521	Johnston Alexander	26 (see sub-d 4)	7
				O 522	Johnston John	e 26	8
210	Dann Ronimus	s 21	1	O 523	Johnston George	w 26	8
211	Deming Andrew	e 26	1	O 526	Johnston Samuel	32	8
215	Darcy Joseph	25	2	T	"	30	9
	"	s 25	3	O	"	s 31	10
216	Davidson James	23	4	O 530	Johnston Frederick	10 Newbridge	
218	Davidson William J	22	5				
219	Darcy Thomas	23	5				
220	Donaghy William	e 26	6	T 542	Kroft John	w 25	1
224	Douglas James	w 29	8	O 544	Knight James	27	2
237	Downey Archibald	27	10	O 546	Kerr James jr	w 25	4
				O 549	Kerr George	w 25	5

550 Kerwin Benjamin ... 32..... 7	o 806 Rogers Joel, s 21 23 (see sub-d 4) 5 o
562 Kerr Robert n w 25 e 25... 4	o 815 Roe James..... pt 30..... 4 o
..... " " 12....Newbridge	o " " e 27 5 o
	o 803 Roe John w 27 5 o
576 Littlejohn Alexander 26..... 5	o
578 Lowes Gideon..... e 29 30 7	T
579 Lunn James..... 33..... 8	T 118 Smith Frederick pt 30..... 4 o
592 Leonard William n 32..... 6	o 830 Sanford Michael w 29..... 3 o
	o 846 Spruce John 31..... 3 o
218 Moore Hugh 22..... 5	o 848 Spence James..... n 31..... 4 T
628 McGrath Peter n 21..... 2	o 849 Spence Adam 32..... 4 T
629 McGrath Andrew.... 22..... 2	o 852 Spence William jr.... s w 28 4 o
630 McLaughlin William jr w 28..... 2	o " " 29..... 5 o
632 McLaughlin William sr e 28..... 2	T 853 Spence William sr.... 30..... 5 o
633 McLaughlin James.... e 28..... 2	o 864 Sararas Samuel 30..... 8 T
658 Montgomery Joseph w 26..... 6	o 868 Stephenson Robert ... 26..... 9 o
" " 28..... 9	o 869 Scarff John 31 32 9 o
660 McLeod Murdock.... 26..... 10	o 873 Smith Mathew e 28..... 11 o
665 Moos John 31..... 11	o 876 Stubbing James T.... 32..... 11 o
499 McDonald Robert.... n 29 n 30.... 2	o 903 Seiber George pt 30..... 3 o
	o 904 Stephens Patrick pt 30 4 o
	" " 13 Newbridge
866 Nelson Samuel 30..... 8	o
	933 Tilker Philip 25..... 2 T
760 Pike Samuel..... 14, 15Newbridge	934 Topham John jr..... n 31..... 2 T
" " pt 30 con 4, 22 con 2, 22 con 1	o 935 Topham John sr..... e 29..... 3 o
" " 10 Newbridge.....	o
762 Pike William 32..... 3	o 967 Weber Isaac 28 29 1 o
766 Pritchard William... 33..... 10	o 968 Williamson William.. 24..... 1 T
769 Patterson John 23..... 2	o 968 Wenzel Sebastian 32..... 1 o
" " 24..... 3	o 977 Williamson Joseph ... 23..... 3 o
	" " w 24..... 2 o
6 Roadhouse Charles .. s 21 2	979 Wallace Thomas 26 27 4 o
" " .. n 21 1	980 Wiggins John 30..... 4 o
795 Reichard John s 21 22 3	983 Warren John..... 24..... 5 o
799 Rutledge James I.... e 24 4	o 984 Warren Allen 24..... 5 o
803 Roe Robert w 27 5	o 985 Wallace Joseph 31..... 6 o
805 Roe William e 31 7	o 986 Wallace John..... 31..... 6 T
	o 993 Walker John n 31..... 10 o
	B 1015 Waldon John pt 30 4 o
	o 1027 Wilson Thomas n 21(see sub-d 4) 5 o

CERTIFICATE.

I, WILLIAM DANE, Clerk of the Municipality of the Township of Howick, in the County of Huron, do hereby certify that the within list is a correct list for the year 1876, of all persons appearing by the last revised Assessment Roll, of the said Municipality, entitled to vote at elections for Members of the Legislative Assembly, and that a copy of such list was first posted up in my office, at Gorrie, on the 4th day of August, 1876. And I hereby call upon all electors to examine the said list, and if any omissions or other errors are perceived therein, to take immediate proceedings to have the said errors corrected according to law.

Dated this 4th day of August, 1876.

WILLIAM DANE,
Clerk of the said Municipality.

(4) 5 o
 4 o
 5 o
 5 o

.... 4 o
 3 o
 3 o
 4 T
 4 T
 4 o
 5 o
 5 (l
 8 T
 9 o
 9 o
 11 o
 11 o
 3 o
 4 o
 idge

... 2 T
 ... 2 T
 ... 3 o

... 1 o
 ... 1 T
 ... 1 o
 ... 3 o
 ... 2 o
 ... 4 o
 ... 4 o
 ... 5 o
 ... 5 o
 ... 6 o
 ... 6 T
 ... 10 o
 ... 4 o
 -d 4) 5 o

