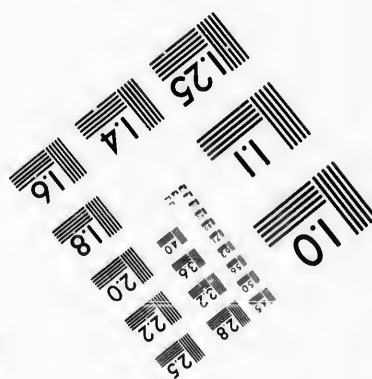
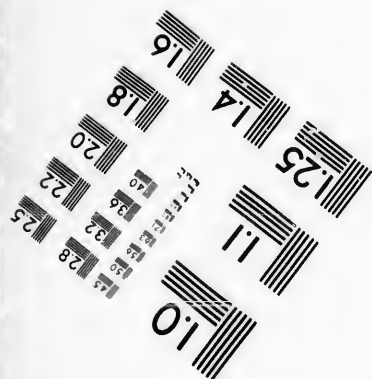
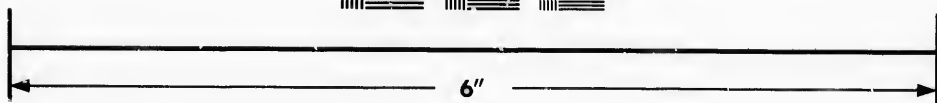
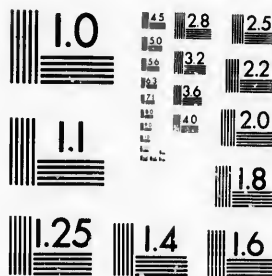


**IMAGE EVALUATION
TEST TARGET (MT-3)**



**Photographic
Sciences
Corporation**

23 WEST MAIN STREET
WEBSTER, N.Y. 14580
(716) 872-4503

1.5 2.8
2.5 3.2
3.6 4.0
2.0 2.2
1.8

**CIHM/ICMH
Microfiche
Series.**

**CIHM/ICMH
Collection de
microfiches.**



Canadian Institute for Historical Microreproductions / Institut canadien de microreproductions historiques

© 1987

1.0
1.5
2.0

Technical and Bibliographic Notes/Notes techniques et bibliographiques

The Institute has attempted to obtain the best original copy available for filming. Features of this copy which may be bibliographically unique, which may alter any of the images in the reproduction, or which may significantly change the usual method of filming, are checked below.

L'Institut a microfilmé le meilleur exemplaire qu'il lui a été possible de se procurer. Les détails de cet exemplaire qui sont peut-être uniques du point de vue bibliographique, qui peuvent modifier une image reproduite, ou qui peuvent exiger une modification dans la méthode normale de filmage sont indiqués ci-dessous.

- | | |
|--|--|
| <input type="checkbox"/> Coloured covers/
Couverture de couleur | <input type="checkbox"/> Coloured pages/
Pages de couleur |
| <input type="checkbox"/> Covers damaged/
Couverture endommagée | <input type="checkbox"/> Pages damaged/
Pages endommagées |
| <input type="checkbox"/> Covers restored and/or laminated/
Couverture restaurée et/ou pelliculée | <input type="checkbox"/> Pages restored and/or laminated/
Pages restaurées et/ou pelliculées |
| <input type="checkbox"/> Cover title missing/
Le titre de couverture manque | <input checked="" type="checkbox"/> Pages discoloured, stained or foxed/
Pages décolorées, tachetées ou piquées |
| <input type="checkbox"/> Coloured maps/
Cartes géographiques en couleur | <input type="checkbox"/> Pages detached/
Pages détachées |
| <input type="checkbox"/> Coloured ink (i.e. other than blue or black)/
Encre de couleur (i.e. autre que bleue ou noire) | <input checked="" type="checkbox"/> Showthrough/
Transparence |
| <input type="checkbox"/> Coloured plates and/or illustrations/
Planches et/ou illustrations en couleur | <input type="checkbox"/> Quality of print varies/
Qualité inégale de l'impression |
| <input type="checkbox"/> Bound with other material/
Relié avec d'autres documents | <input type="checkbox"/> Includes supplementary material/
Comprend du matériel supplémentaire |
| <input type="checkbox"/> Tight binding may cause shadows or distortion
along interior margin/
La reliure serrée peut causer de l'ombre ou de la
distorsion le long de la marge intérieure | <input type="checkbox"/> Only edition available/
Seule édition disponible |
| <input type="checkbox"/> Blank leaves added during restoration may
appear within the text. Whenever possible, these
have been omitted from filming/
Il se peut que certaines pages blanches ajoutées
lors d'une restauration apparaissent dans le texte,
mais, lorsque cela était possible, ces pages n'ont
pas été filmées. | <input type="checkbox"/> Pages wholly or partially obscured by errata
slips, tissues, etc., have been refilmed to
ensure the best possible image/
Les pages totalement ou partiellement
obscurcies par un feuillet d'errata, une pelure,
etc., ont été filmées à nouveau de façon à
obtenir la meilleure image possible. |
- Additional comments: / [Printed ephemera] [8] p.
Commentaires supplémentaires:

This item is filmed at the reduction ratio checked below/
Ce document est filmé au taux de réduction indiqué ci-dessous.

10X	14X	18X	22X	26X	30X
<input type="checkbox"/>	<input type="checkbox"/>	<input type="checkbox"/>	<input checked="" type="checkbox"/>	<input type="checkbox"/>	<input type="checkbox"/>
12X	16X	20X	24X	28X	32X

The copy filmed here has been reproduced thanks to the generosity of:

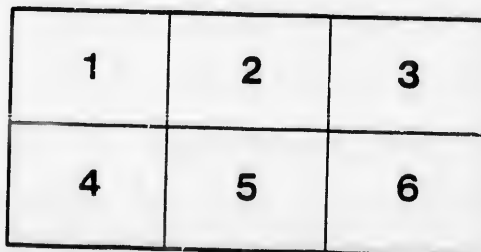
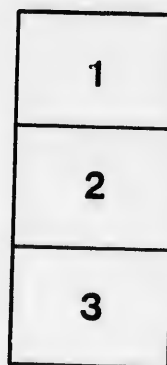
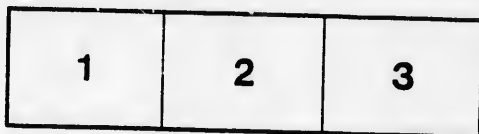
D. B. Weldon Library
University of Western Ontario
(Regional History Room)

The images appearing here are the best quality possible considering the condition and legibility of the original copy and in keeping with the filming contract specifications.

Original copies in printed paper covers are filmed beginning with the front cover and ending on the last page with a printed or illustrated impression, or the back cover when appropriate. All other original copies are filmed beginning on the first page with a printed or illustrated impression, and ending on the last page with a printed or illustrated impression.

The last recorded frame on each microfiche shall contain the symbol \rightarrow (meaning "CONTINUED"), or the symbol ∇ (meaning "END"), whichever applies.

Maps, plates, charts, etc., may be filmed at different reduction ratios. Those too large to be entirely included in one exposure are filmed beginning in the upper left hand corner, left to right and top to bottom, as many frames as required. The following diagrams illustrate the method:



L'exemplaire filmé fut reproduit grâce à la générosité de:

D. B. Weldon Library
University of Western Ontario
(Regional History Room)

Les images suivantes ont été reproduites avec le plus grand soin, compte tenu de la condition et de la netteté de l'exemplaire filmé, et en conformité avec les conditions du contrat de filmage.

Les exemplaires originaux dont la couverture en papier est imprimée sont filmés en commençant par le premier plat et en terminant soit par la dernière page qui comporte une empreinte d'impression ou d'illustration, soit par le second plat, selon le cas. Tous les autres exemplaires originaux sont filmés en commençant par la première page qui comporte une empreinte d'impression ou d'illustration et en terminant par la dernière page qui comporte une telle empreinte.

Un des symboles suivants apparaît sur la dernière image de chaque microfiche, selon le cas: le symbole \rightarrow signifie "A SUIVRE", le symbole ∇ signifie "FIN".

Les cartes, planches, tableaux, etc., peuvent être filmés à des taux de réduction différents. Lorsque le document est trop grand pour être reproduit en un seul cliché, il est filmé à partir de l'angle supérieur gauche, de gauche à droite, et de haut en bas, en prenant le nombre d'images nécessaire. Les diagrammes suivants illustrent la méthode.

aire
détails
des du
modifier
per une
filmage

es

errata
to

pelure,
n à

32X

1884

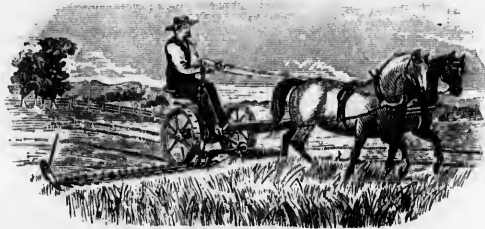
1885

PARIS FOUNDRY

AND

Agricultural Works

ESTABLISHED 1859



LOW-DOWN

HARVESTER BINDER

MAXWELL REAPERS

MOWERS, HAY RAKES

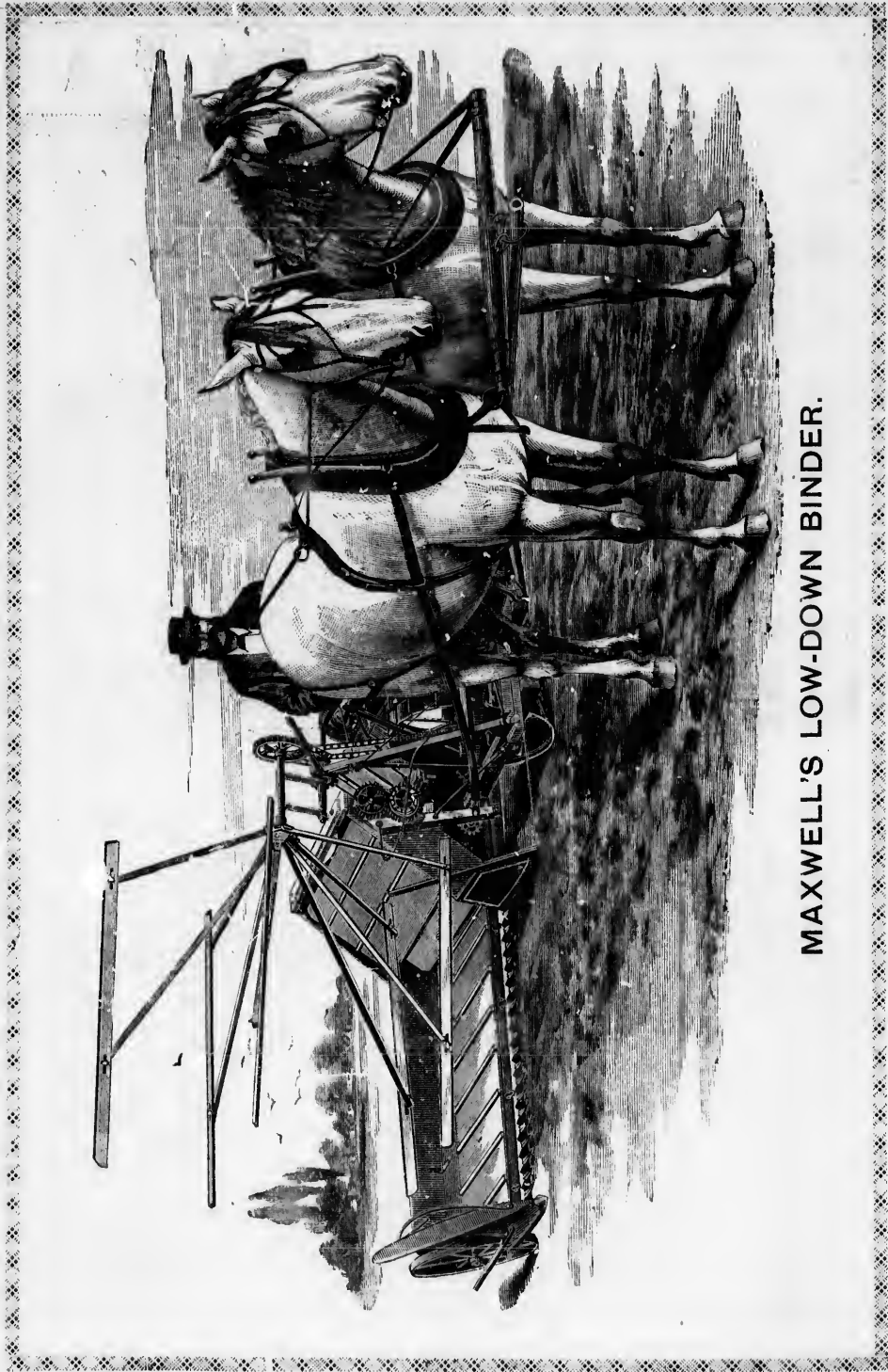
AND

STOCK RAISERS' IMPLEMENTS

ADDRESS, DAVID MAXWELL,

PARIS, ONTARIO

CANADA



MAXWELL'S LOW-DOWN BINDER.

MAXWELL REAPER.



MAXWELL REAPER IN THE FIELD.

REASONS WHY IT IS THE BEST.

It is the best balanced, and has less side draft than any other.
 The main gearing is separate from the driving wheel, avoiding the possibility of replacing a whole driving wheel by the breakage of a single cog.
 The rake-head is the simplest made, and has less friction on its working parts than any other.
 It has the simplest automatic rake-trip manufacture.
 It has the simplest tilting arrangement.
 It has the easiest lifting arrangement.

It has the simplest and most easily operated outside lift.
 It has the strongest and most effective truss bar in use.
 The rake-head is thoroughly protected, preventing the possibility of grain winding.
 It has the most complete pitman box made.
 The tilting and lifting levers are placed most conveniently for the operator.
 It can be worked by any child who can drive a team.
 It has the strongest malleable rake arm used.
 It has the patent adjustable friction roller.

The rake is drawn directly from the driving wheel shaft, avoiding any chains or extra gearing.
 It is simple, and has less wearing parts than any other.
 When leaving the table the rake turns upwards, avoiding any tossing of sheaves.
 By one lever the whole machine, including rakes and knife, is thrown out of gear.
 In backing nothing moves but the driving wheel.
 It is the cheapest machine in the market when durability, workmanship and finish are considered.



© 1887 JOHN GARDNER & CO. NEW YORK

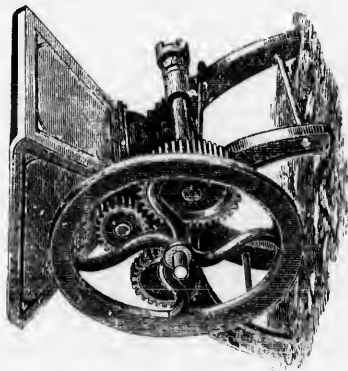
"MAXWELL MOWER," STRONG, POWERFUL & SIMPLE

During last harvest six hundred of the new Maxwell Mowers were manufactured and sold, and they have given entire satisfaction to purchasers. Their simplicity, combined with ease of management, durability and cutting powers, has given them a foremost place among Canadian Mowers.

POINTS ABOUT THE MAXWELL MOWER

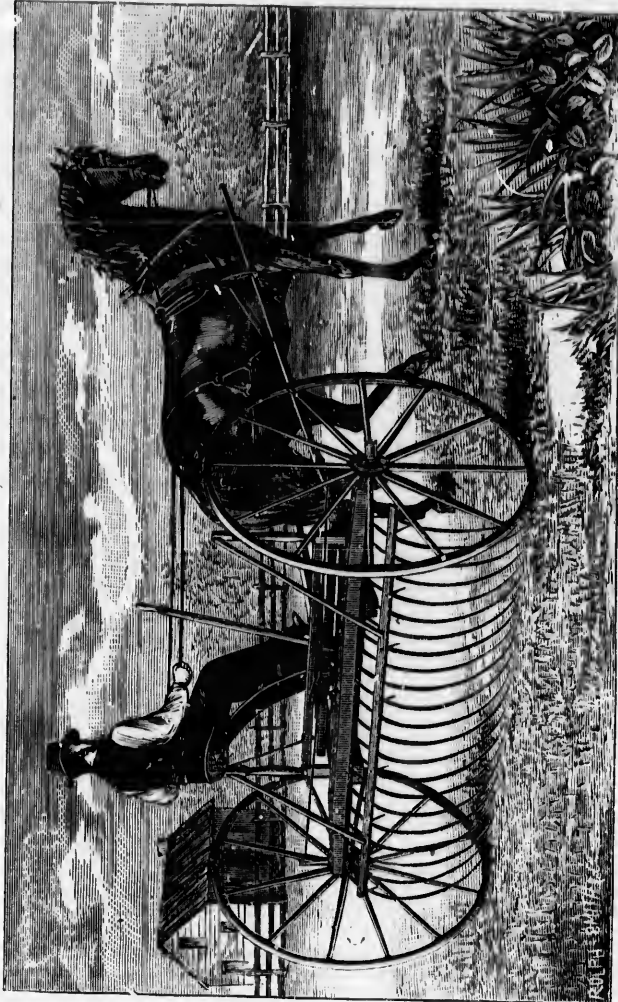
- Driving wheels are larger than the majority of other Mowers, giving it a greater cutting power.
- The gearing is all enclosed, and thoroughly protected from dust.
- The bar can be adjusted at inner or outer ends, and is well adapted for rough ground.
- A combined shoe and wheel is used for carrying bar over furrows.
- The pitman box and shaft are made in such a manner that any operator can always keep them tight without any difficulty.

of management, durability and cutting powers, has given them a foremost place among Canadian Mowers.



No. 1 GRAIN CRUSHER,
GEARED FOR EITHER ROD OR
BELT.

Straw Cutters, Horse Powers, Root
Cutters, and all kind of Stock Raisers'
Implements. Send for prices.



MAXWELL HORSE RAKE,
IMPROVED CONE DUMP.
IS UNEQUALLED FOR SIMPLICITY, DURABILITY AND STRENGTH.



FOR several years I have been experimenting with Low-down Binder, and am pleased to state that I have succeeded in placing on the market a machine which is a thorough success. This has been achieved after considerable hard work, and amidst a good deal of adverse criticism on the part of interested parties. But with the record before us of the Maxwell Low-down during the harvest of 1884, "we fear no foe," and approach you for the coming harvest with the following guarantee:

"The MAXWELL LOW-DOWN BINDER is guaranteed the lightest draft machine in the market, as durable as any, will do equally as good work, will work on rougher ground, go through a narrower gate without change than any other, and has less parts than any machine yet produced."

The following testimonials from farmers competent to judge, who have either worked machines or witnessed tests, show conclusively that the Maxwell Low-down Binder is what it is claimed to be—

A PERFECT SUCCESS.

DAVID MAXWELL.

TESTIMONIALS

Better than with a Reaper.

DRAYTON, August 26th, 1884.

DAVID MAXWELL, Paris.

DEAR SIR,—Your Low-down Binder cut for me to-day five acres of wheat. It was an exceedingly rough piece of ground; the lands were narrow and furrows very deep. The Binder did first-class work, without missing any sheaves. It was better done than I could do with Reaper. My small team was quite capable to do the work.

Yours, truly,

HUGH MONTGOMERY.

A Perfect Success.

DAVID MAXWELL.

PARIS, 3rd September, 1884.

DEAR SIR,—After arranging to get your Binder this harvest, I was informed that it was a failure, and agents of other firms endeavored to obtain my order for their machines, when you informed me you were willing to place a machine on my farm on its merits. I was satisfied, and the result I do not think can be any more satisfactory to you than myself. My son, 15 years of age, and who had never previously been on a binder, worked it through the entire harvest with as much ease as a reaper or mower. I never used more than two horses, and am satisfied they worked with very little more draft than an ordinary reaper. The machine was tried on all kinds of grain and under various conditions, and the work done was something I do not think can be equalled, and I am positive cannot be excelled. I would have no other machine, and if your Low-down Binder is what your opposition call a failure, I may say that in any farming machinery I require I would prefer the failures to the successes. I can cheerfully recommend the machine to anyone requiring a first-class Binder.

Yours truly,

C. BARKER.

Does not Sweat one Span of Horses.

DAVID MAXWELL, Paris.

MONO ROAD, August, 1884.

DEAR SIR,—I saw your Low-down Binder working for one hour, and it was so simple that I fancied the machine and got it to cut ten acres of heavy oats. I did it with one span of horses and did not sweat them. I would advise farmers to see your Binder before buying.

Yours truly, WILLIAM WARD.

Equally good in Standing or Tangled Grain.

DAVID MAXWELL, Paris.

PARIS, 2nd September, 1884.

DEAR SIR,—The Maxwell Low-down Binder at work on my farm excelled my expectations. Part of the field was standing and part badly down and tangled, but the little Binder did equally good work under any conditions. I would advise any one wanting the best Binder to buy a Maxwell Low-down.

Yours truly, HENRY MARTIN.

Passing through Elevator Feet Gate a decided Advantage.

DAVID MAXWELL, Paris.

GLENMORRIS, 4th September, 1884.

DEAR SIR,—We witnessed the working of your Low-down Binder on farm of Mr. Wm. Batters, and for quality of work done, lightness of draft and simplicity, it is ahead of any Binder we have seen. Two horses can draw your machine as easily as three can an elevating machine, and being able to drive through an eleven feet gate without folding your machine we consider a decided advantage. In fact, your machine is what farmers have been looking for, and we would advise them to see it before buying.

WM. BATTERS, WM. HEAD, ROBERT P. IRVING,
ALEXANDER McCREA, JAS. H. BURNET.

Did the Work every time in Heavy Wheat and Thistles.

DAVID MAXWELL, Paris.

CHINGUACOUSY, August 22nd, 1884.

DEAR SIR,—I had a trial of your Low-down Binder in a very heavy crop of wheat. There was a lot of thistles in part of the grain, and the general opinion was that in such a place the machine would choke; but the machine did the work every time. There is nothing to compare with it in the Pinder line, and I can recommend it to any one wanting a first-class Binder.

ALEX. CUNINGTON.

Is All that can be Desired.

DAVID MAXWELL, Paris.

HULLETT, August 29th, 1884.

DEAR SIR,—The Low-down Binder I purchased from you is all that can be desired. I have cut forty-three acres of wheat, and it did it splendidly. I have cut fall wheat, barley, oats and spring wheat, the latter very heavy and somewhat lodged. It cuts clean, and binds a good sheaf. One team will do the work with ease, and I consider it equals the work of any binder yet produced, with many other advantages in its construction.—Yours truly,

P. HAWTHORN.

Farmers not to Buy any other.

DAVID MAXWELL, Paris.

PARIS, 1st September, 1884.

DEAR SIR,—Your Low-down Binder cut for me twenty-two acres of barley, and did the work very satisfactorily. It is easily operated, light of draft, and I much prefer it to the heavy elevating machine. I would advise farmers not to buy any other.

I. L. HOWELL.

Conveniently Operated. No Difficulty passing through Gates.

DAVID MAXWELL, Paris.

PARIS, 3rd September, 1884.

DEAR SIR,—The Low-down Binder I purchased from you has given me entire satisfaction. Two horses worked it all harvest, and it did the work well. It is easier of draft than any Binder I have seen, conveniently operated, and no difficulty in passing through eleven feet gate. I can recommend it to intending purchasers.

DAVID RUTHERFORD.

Fifty Dollars the Value of any Elevator Binder he ever saw.

DAVID MAXWELL, Paris.

SPRINGFIELD, August, 1884.

SIR,—With many others I witnessed the working of your Low-down Binder, and I would not now give fifty dollars for the best elevator I ever saw. Your Low-down is so convenient for passing through gates, simple and convenient to handle; it is just what farmers want.

R. E. MCKENNEY.

Neither Side Draft nor Weight on Horses' Necks.

DAVID MAXWELL, Paris.

CALEDON EAST, August 20th, 1884.

I had a trial of your Binder on my farm, and it works without a fault. There is neither side draft nor weight on horses' necks. All who witnessed it pronounced it the coming Binder. The Maxwell Low-down takes the cake.

Yours truly, THOS. GOODEAVE.

Works Well in Lodged Grain.

DAVID MAXWELL, Paris.

PARIS, 5th Sept., 1884.

DEAR SIR,—I witnessed a test of your Low-down Binder on my farm, in a field of wheat which was very badly lodged and twisted in every conceivable way, but it did its work as well as it is possible for any binder to do. I can recommend it to the public as very light in draft, and easily handled.

Works to Perfection.

DAVID MAXWELL, Paris.

PARIS, 5th Sept., 1884.

DEAR SIR,—The trial you had of your Low-down Binder on my farm was entirely satisfactory to me. It did its work to perfection, and was very light on the team. I consider it superior to any Elevated Binder in the market.

Most Suitable for the Farmer.

DAVID MAXWELL, Paris.

PARIS, 6th Sept., 1884.

DEAR SIR,—I witnessed a trial of your Low-down Binder on my farm in a field of wheat, and it worked in every respect to my satisfaction. I can cheerfully recommend it to intending purchasers as light in draft, simple, easily handled; and taking everything into consideration, I believe it to be the most suitable machine for the farmer in the market.

One Pair of Horses Cuts 40 Acres with Ease.

DAVID MAXWELL, Paris.

LONDON, 1st Sept., 1884.

DEAR SIR,—The Low-down Binder I took on trial from your agent, Wm. Porter, has cut about 40 acres, and has given me very good satisfaction, cutting and binding all kinds of grain, and was worked with ease by one pair of horses; having done the above without sending for the agent or any person to repair.

The Coming Machine.

DAVID MAXWELL, Paris.

BELMONT, 1st Sept., 1884.

DEAR SIR,—The Low-down Binder taken on trial from your agent, Wm. Porter, cut about 40 acres of different kinds of grain, cutting and binding to my entire satisfaction; and all who witnessed it working say it is the coming machine. It is light in draft, easily managed, simple, and easy on horses, and I would recommend all purchasers to see it before buying.

Cut 80 Acres, and the Worst Lodged Field in Oxford County.

DAVID MAXWELL, Paris.

BLENHEIM, 3rd Sept., 1884.

DEAR SIR,—The Low-down Binder purchased from you is everything that was guaranteed. I have cut 80 acres of different kinds of grain, and in all shapes. I had one field of wheat and oats, I think, as badly down and lodged as anything in this county, but your Binder was just the article to harvest it. It is superior to any Elevator Binder built, a horse lighter in draft, and more conveniently operated.

Six and Three-quarter Acres in Four Hours.

DAVID MAXWELL, Paris.

PARIS, 3rd Sept., 1884.

DEAR SIR,—Your Low-down Binder at a test on my farm cut six and three-quarter acres in four hours. It was on a very hilly piece of land, and the work done was excellent. I think one team can handle your Binder as easily as three can any Elevator machine.

In a Badly Lodged Field of Oats.

DAVID MAXWELL, Paris.

DEAR SIR,—I witnessed the working of your Low-down Binder in a badly lodged field of oats on my place. It worked to perfection, and I would advise farmers to see Maxwell's Low-down Binder before buying elsewhere.

Can Cut from Ten to Twelve Acres a Day with Light Team.

DAVID MAXWELL, Paris.

SPRINGFIELD, August, 1884.

DEAR SIR,—By request of your agent here, Mr. R. H. Lindsay, I went to station and got your Low-down Binder to test. I had purchased a new Reaper two years ago and had no intention of buying a Binder, but I soon changed my mind after seeing yours work. I would not be without it for a great deal more than the cost. I cut over twenty acres, and can cut from ten to twelve acres a day with my team, which does not weigh over 2,100 lbs., and drive it into the barn every night without any trouble. I would not give one hundred dollars for the best Elevator Binder made. I wish you success. You have supplied what farmers want.

