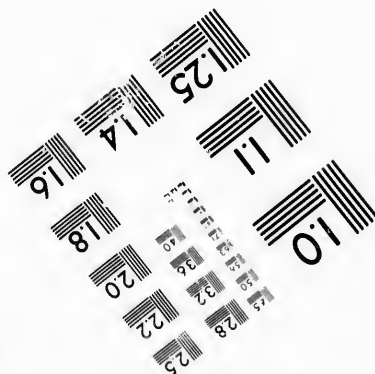
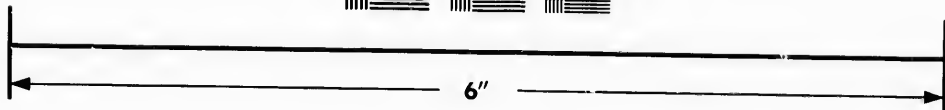
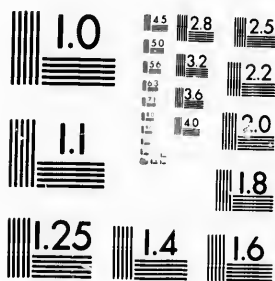


**IMAGE EVALUATION  
TEST TARGET (MT-3)**



**Photographic  
Sciences  
Corporation**

23 WEST MAIN STREET  
WEBSTER, N.Y. 14580  
(716) 872-4503

**CIHM/ICMH  
Microfiche  
Series.**

**CIHM/ICMH  
Collection de  
microfiches.**



Canadian Institute for Historical Microreproductions / Institut canadien de microreproductions historiques

**© 1987**

Technical and Bibliographic Notes/Notes techniques et bibliographiques

The Institute has attempted to obtain the best original copy available for filming. Features of this copy which may be bibliographically unique, which may alter any of the images in the reproduction, or which may significantly change the usual method of filming, are checked below.

L'Institut a microfilmé le meilleur exemplaire qu'il lui a été possible de se procurer. Les détails de cet exemplaire qui sont peut-être uniques du point de vue bibliographique, qui peuvent modifier une image reproduite, ou qui peuvent exiger une modification dans la méthode normale de filmage sont indiqués ci-dessous.

- |   |   |
|---|---|
| <input checked="" type="checkbox"/> Coloured covers/<br>Couverture de couleur   | <input type="checkbox"/> Coloured pages/<br>Pages de couleur  |
| <input type="checkbox"/> Covers damaged/<br>Couverture endommagée   | <input type="checkbox"/> Pages damaged/<br>Pages endommagées  |
| <input type="checkbox"/> Covers restored and/or laminated/<br>Couverture restaurée et/ou pelliculée   | <input type="checkbox"/> Pages restored and/or laminated/<br>Pages restaurées et/ou pelliculées   |
| <input type="checkbox"/> Cover title missing/<br>Le titre de couverture manque  | <input checked="" type="checkbox"/> Pages discoloured, stained or foxed/<br>Pages décolorées, tachetées ou piquées  |
| <input type="checkbox"/> Coloured maps/<br>Cartes géographiques en couleur  | <input type="checkbox"/> Pages detached/<br>Pages détachées   |
| <input type="checkbox"/> Coloured ink (i.e. other than blue or black)/<br>Encre de couleur (i.e. autre que bleue ou noire)  | <input checked="" type="checkbox"/> Showthrough/<br>Transparence  |
| <input type="checkbox"/> Coloured plates and/or illustrations/<br>Planches et/ou illustrations en couleur   | <input type="checkbox"/> Quality of print varies/<br>Qualité inégale de l'impression  |
| <input type="checkbox"/> Bound with other material/<br>Relié avec d'autres documents  | <input type="checkbox"/> Includes supplementary material/<br>Comprend du matériel supplémentaire  |
| <input type="checkbox"/> Tight binding may cause shadows or distortion along interior margin/<br>La reliure serrée peut causer de l'ombre ou de la distorsion le long de la marge intérieure  | <input type="checkbox"/> Only edition available/<br>Seule édition disponible  |
| <input type="checkbox"/> Blank leaves added during restoration may appear within the text. Whenever possible, these have been omitted from filming/<br>Il se peut que certaines pages blanches ajoutées lors d'une restauration apparaissent dans le texte, mais, lorsque cela était possible, ces pages n'ont pas été filmées. | <input type="checkbox"/> Pages wholly or partially obscured by errata slips, tissues, etc., have been refilmed to ensure the best possible image/<br>Les pages totalement ou partiellement obscurcies par un feuillet d'errata, une pelure, etc., ont été filmées à nouveau de façon à obtenir la meilleure image possible. |
| <input checked="" type="checkbox"/> Additional comments: [Printed ephemera] [2] p.<br>Commentaires supplémentaires:   |   |

This item is filmed at the reduction ratio checked below/  
Ce document est filmé au taux de réduction indiqué ci-dessous.

10X	12X	14X	16X	18X	20X	22X	24X	26X	28X	30X	32X
						✓					

The copy filmed here has been reproduced thanks to the generosity of:

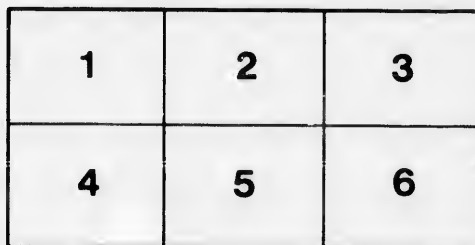
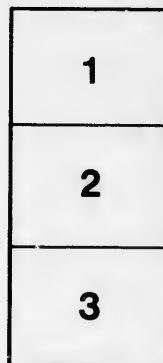
University of British Columbia Library

The images appearing here are the best quality possible considering the condition and legibility of the original copy and in keeping with the filming contract specifications.

Original copies in printed paper covers are filmed beginning with the front cover and ending on the last page with a printed or illustrated impression, or the back cover when appropriate. All other original copies are filmed beginning on the first page with a printed or illustrated impression, and ending on the last page with a printed or illustrated impression.

The last recorded frame on each microfiche shall contain the symbol  $\rightarrow$  (meaning "CONTINUED"), or the symbol  $\nabla$  (meaning "END"), whichever applies.

Maps, plates, charts, etc., may be filmed at different reduction ratios. Those too large to be entirely included in one exposure are filmed beginning in the upper left hand corner, left to right and top to bottom, as many frames as required. The following diagrams illustrate the method:



L'exemplaire filmé fut reproduit grâce à la générosité de:

University of British Columbia Library

Les images suivantes ont été reproduites avec le plus grand soin, compte tenu de la condition et de la netteté de l'exemplaire filmé, et en conformité avec les conditions du contrat de filmage.

Les exemplaires originaux dont la couverture en papier est imprimée sont filmés en commençant par le premier plat et en terminant soit par la dernière page qui comporte une empreinte d'impression ou d'illustration, soit par le second plat, selon le cas. Tous les autres exemplaires originaux sont filmés en commençant par la première page qui comporte une empreinte d'impression ou d'illustration et en terminant par la dernière page qui comporte une telle empreinte.

Un des symboles suivants apparaîtra sur la dernière image de chaque microfiche, selon le cas: le symbole  $\rightarrow$  signifie "A SUIVRE", le symbole  $\nabla$  signifie "FIN".

Les cartes, planches, tableaux, etc., peuvent être filmés à des taux de réduction différents. Lorsque le document est trop grand pour être reproduit en un seul cliché, il est filmé à partir de l'angle supérieur gauche, de gauche à droite, et de haut en bas, en prenant le nombre d'images nécessaire. Les diagrammes suivants illustrent la méthode.

ire  
détails  
es du  
modifier  
er une  
filmage

es

errata  
to

pelure,  
on à



32X

**A P P E A L**  
FOR THE  
**NATIVE RACE, SETTLERS, AND MINERS,**  
OF  
**BRITISH COLUMBIA.**

THE COLUMBIA MISSION FUND was established in 1859, to aid the Church of England in the new Colony of British Columbia, the area of which equals that of France and England, in the maintenance of Clergy, Catechists, and Teachers, amongst the European, Chinese, and Indian population; also in erection of Churches, Schools, Parsonages, and Mission Buildings.

Thus far the work has prospered, and the Church of Christ is being steadily planted in that new land; for in Ten years, *instead of one Clergyman and one Church*, there are 25 Churches and Mission Chapels, 21 Residences, and 11 School Rooms; 10 Missions have been opened to the Indian population, glebes for future endowment have been secured in many parishes, and 15 Clergymen, 13 Catechists and Teachers form (1869) the Ministering and Educational body, through whom, from 35 centres, the work of civilization is proceeding in all parts of the Colony.

The Native Indian race numbers 50,000, of whom about 5,000 are under instruction in four chief centres, including the Chymstan Mission of the C. M. S., hundreds of miles apart. If these centres can be strengthened and extended as openings occur, the whole of this noble race may be rescued, elevated and saved.

The European Colonists are scattered over a vast area of many districts, rural, town, and mining, varying in population from a few hundreds to several thousands, and are doing their utmost, making efforts with much self-denial, to keep amongst them the means of grace.

Columbia having now joined the Dominion, and a railroad through the whole British Territory being one of the conditions, population is likely from this time steadily to increase.

Assistance at this time is earnestly sought in consequence of the following circumstances, viz. :—

*A Commercial Crisis*, lasting four years, has greatly reduced resources in the Colony, and in spite of all efforts has placed the Mission in difficulty.

*Falling off in Subscriptions* at home through death of friends expiration of limited time of subscriptions, and other causes.

*Reduction in the Grant* of the Society for the Propagation of the Gospel 30 per cent. has rendered it impossible for the Clergy, already poorly paid, to exist upon the reduced incomes.

Several New Missions of peculiar interest have been recently, and almost of necessity, undertaken: such as the Rev. J. B. Good's removal to the Thompson River Indians, who urgently pressed him to come, and of whom 2,000 have placed themselves under instruction; the new Mission to the Tahk-ah Tribes who inhabit 20 villages along 200 miles of the Pacific Coast; permanent residence of a Missionary at Cariboo, the chief mining district of the Colony, &c.

Urgent Call for extension, especially amongst the Natives of the Fraser and Thompson Rivers, where two additional Missionaries are urgently needed to teach the converts and superintend industrial work; amongst the Haidahs in Queen Charlotte's Islands, and the Quoquoilts, numbering 5,000 each nation, who have asked for teachers and to whom Four Missionaries should go: these are calls which, if unheeded now, must result in ground being lost and openings neglected, never afterwards to be regained.

For an efficient work, seventeen additional Missionaries are needed.

Several vacant posts cannot be filled up without increased means.

There will be absolute necessity for giving up important work which God is blessing, and reducing the number of Clergy, if this Appeal does not succeed.

To the above causes of anxiety may now be added the total destruction of the Cathedral church by fire on the night of the 1st of October 1869.

£3,000 is required in Annual Subscriptions;—and Donations are earnestly sought towards the debt upon the Mission and extension of the work.

Contributions will be thankfully received by—

The BISHOP of COLUMBIA, 70, Upper Berkeley Street,  
 London, W.

And for the Columbia Mission—

By Messrs. COUTTS & Co. 59, Strand.

„ COX & Co. Craig's Court, Charing Cross.

„ SMITH, PAYNE, & SMITH, 1, Lombard Street.

THE SOCIETY FOR THE PROPAGATION OF THE GOSPEL,  
 5, Park Place, St. James's Street

And by the Secretaries—

REV. H. ROWSELL, 20, Finsbury Square, E.C.

G. P. ARDEN, Esq., Halstead, Essex.

Post-office Orders, crossed "Cox & Co.," and made payable at the Charing Cross Office, may be forwarded to either of the Secretaries.

Annual Reports may be had at Messrs. RIVINGTON'S, Waterloo Place, London.

1871.

