



**CIHM/ICMH
Microfiche
Series.**

**CIHM/ICMH
Collection de
microfiches.**



Canadian Institute for Historical Microreproductions / Institut canadien de microreproductions historiques



© 1986

Technical and Bibliographic Notes/Notes techniques et bibliographiques

The Institute has attempted to obtain the best original copy available for filming. Features of this copy which may be bibliographically unique, which may alter any of the images in the reproduction, or which may significantly change the usual method of filming, are checked below.

L'institut a microfilmé le meilleur exemplaire qu'il lui a été possible de se procurer. Les détails de cet exemplaire qui sont peut-être uniques du point de vue bibliographique, qui peuvent modifier une image reproduite, ou qui peuvent exiger une modification dans la méthode normale du filmage sont indiqués ci-dessous.

- | | |
|--|--|
| <input type="checkbox"/> Coloured covers/
Couverture de couleur | <input type="checkbox"/> Coloured pages/
Pages de couleur |
| <input type="checkbox"/> Covers damaged/
Couverture endommagée | <input checked="" type="checkbox"/> Pages damaged/
Pages endommagées |
| <input type="checkbox"/> Covers restored and/or laminated/
Couverture restaurée et/ou pelliculée | <input type="checkbox"/> Pages restored and/or laminated/
Pages restaurées et/ou pelliculées |
| <input type="checkbox"/> Cover title missing/
Le titre de couverture manque | <input checked="" type="checkbox"/> Pages discoloured, stained or foxed/
Pages décolorées, tachetées ou piquées |
| <input type="checkbox"/> Coloured maps/
Cartes géographiques en couleur | <input type="checkbox"/> Pages detached/
Pages détachées |
| <input type="checkbox"/> Coloured ink (i.e. other than blue or black)/
Encre de couleur (i.e. autre que bleue ou noire) | <input checked="" type="checkbox"/> Showthrough/
Transparence |
| <input type="checkbox"/> Coloured plates and/or illustrations/
Planches et/ou illustrations en couleur | <input type="checkbox"/> Quality of print varies/
Qualité inégale de l'impression |
| <input type="checkbox"/> Bound with other material/
Relié avec d'autres documents | <input type="checkbox"/> Includes supplementary material/
Comprend du matériel supplémentaire |
| <input type="checkbox"/> Tight binding may cause shadows or distortion
along interior margin/
La reliure serrée peut causer de l'ombre ou de la
distorsion le long de la marge intérieure | <input type="checkbox"/> Only edition available/
Seule édition disponible |
| <input type="checkbox"/> Blank leaves added during restoration may
appear within the text. Whenever possible, these
have been omitted from filming/
Il se peut que certaines pages blanches ajoutées
lors d'une restauration apparaissent dans le texte,
mais, lorsque cela était possible, ces pages n'ont
pas été filmées. | <input type="checkbox"/> Pages wholly or partially obscured by errata
slips, tissues, etc., have been refilmed to
ensure the best possible image/
Les pages totalement ou partiellement
obscurcies par un feuillet d'errata, une pelure,
etc., ont été filmées à nouveau de façon à
obtenir la meilleure image possible. |
| <input checked="" type="checkbox"/> Additional comments: [Printed ephemera] [4] p.
Commentaires supplémentaires: | |

This item is filmed at the reduction ratio checked below/
Ce document est filmé au taux de réduction indiqué ci-dessous.

10X	12X	14X	16X	18X	20X	22X	24X	26X	28X	30X	32X
									✓		

The copy filmed here has been reproduced thanks to the generosity of:

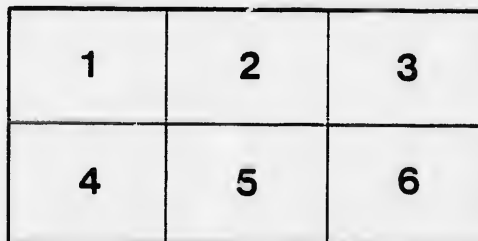
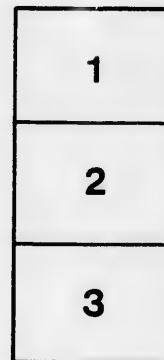
D. B. Weldon Library
University of Western Ontario
(Regional History Room)

The images appearing here are the best quality possible considering the condition and legibility of the original copy and in keeping with the filming contract specifications.

Original copies in printed paper covers are filmed beginning with the front cover and ending on the last page with a printed or illustrated impression, or the back cover when appropriate. All other original copies are filmed beginning on the first page with a printed or illustrated impression, and ending on the last page with a printed or illustrated impression.

The last recorded frame on each microfiche shall contain the symbol \rightarrow (meaning "CONTINUED"), or the symbol ∇ (meaning "END"), whichever applies.

Maps, plates, charts, etc., may be filmed at different reduction ratios. Those too large to be entirely included in one exposure are filmed beginning in the upper left hand corner, left to right and top to bottom, as many frames as required. The following diagrams illustrate the method:



L'exemplaire filmé fut reproduit grâce à la générosité de:

D. B. Weldon Library
University of Western Ontario
(Regional History Room)

Les images suivantes ont été reproduites avec le plus grand soin, compte tenu de la condition et de la netteté de l'exemplaire filmé, et en conformité avec les conditions du contrat de filmage.

Les exemplaires originaux dont la couverture en papier est imprimée sont filmés en commençant par le premier plat et en terminant soit par la dernière page qui comporte une empreinte d'impression ou d'illustration, soit par le second plat, selon le cas. Tous les autres exemplaires originaux sont filmés en commençant par la première page qui comporte une empreinte d'impression ou d'illustration et en terminant par la dernière page qui comporte une telle empreinte.

Un des symboles suivants apparaîtra sur la dernière image de chaque microfiche, selon le cas: le symbole \rightarrow signifie "A SUIVRE", le symbole ∇ signifie "FIN".

Les cartes, planches, tableaux, etc., peuvent être filmés à des taux de réduction différents. Lorsque le document est trop grand pour être reproduit en un seul cliché, il est filmé à partir de l'angle supérieur gauche, de gauche à droite, et de haut en bas, en prenant le nombre d'images nécessaire. Les diagrammes suivants illustrent la méthode.

READ AND REFLECT.

NOTICE TO OUR PATRONS—If the individual members of an audience would stop to think for just an instant, they would undoubtedly appreciate the fact that the habit of rising from their seats and leaving the theatre before the curtain falls, is a most annoying one, and one that should be stopped. We therefore beg our audiences to kindly remain in their seats until the close of the performance.

Evenings—doors open at 7:30; curtain rises at 8:15 sharp. Matinees—doors open at 1:30; curtain rises at 2:30 sharp.

Plan opens for each attraction two days in advance.



Seats can be secured by mail, telegraph or telephone. Telephone 738.
Physicians are requested to register at the Box Office, leaving seat number, so that they will enable Ushers to find them if called for, without disturbing the audience.
Carriages can be ordered at the Box Office or of the Chief Usher.
Please report to the management any inattention on the part of the employees.
Overcoats, packages and umbrellas checked for a small charge.
For all lost articles apply at Box Office.
Opera Glasses can be rented by applying to Ushers or at Box Office.
It is strange, but there is a class of people that seem to take an intense delight in bespattering the floor with tobacco juice and in being boisterous and using profane language. These people should know at once that the courts authorize their immediate expulsion, should the management see fit to exercise its rights.

BETWEEN the Acts, and after the Opera is over go to the
OPERA + CIGAR STORE
For Cigars, Cigarettes, Etc.
LOUIS RISK.

W. T. STRONG,
Dispensing + Chemist
184 Dundas Street,
LONDON - - - ONTARIO.

HATS!

—LATEST—

American and English Shapes

In all Colors,

—JUST OPENED—

Rivard

LONDON'S FASHIONABLE HATTER,

400 Richmond St., LONDON, ONT.

C. J. WHITNEY LESSEE AND MANAGER.
A. E. ROOTE REPRESENTATIVE.
FRED. L. EVANS DIRECTOR OF ORCHESTRA.
GUS. SCHABACKER STAGE MANAGER.
JAMES LAMB CHIEF USHER.

Friday, May 19th, 1903.

PROGRAMME.

The
AFRICAN NATIVE CHOR

—Under the Direction of—

MESSRS. VERT AND HARRISS.

(Programme Continued on Page 3.)

THE BEST INVESTMENT.



Nothing adds more to a lady's or gentleman's appearance than a stylish, good-fitting shoe. Your footwear demands, and should receive, more attention than any other part of your dress. It should not on any account be neglected. But to get what you require in this respect it will pay you to make your purchases at the

Central Shoe Store

148 DUNDAS STREET.

JNO. S. BROWN

TELEPHONE 881.

OUR PROGRAM.

- FOR THE PEOPLE'S PERPETUAL PIC-NIC!
- THE GENUINE**—Heintzman & Co., Pianos!
- THE WORLD-FAMED**—Emerson Pianos!
- THE UNEQUALLED**—Goderich Organs!
- THE PERFECT**—White Sewing Machines!
- AN ENDLESS DISPLAY OF**—Small Musical Instruments!
- A MODEL ASSORTMENT OF**—Strings, Fittings, Music Books, Etc.
- THE ALL-IMPORTANT**—Marriage Licenses!

These and countless other good things can be obtained at "COLWELL'S POPULAR MUSIC HOUSE," 171 Dundas Street, LONDON.

WE KEEP A FIRST-CLASS MUSIC STORE.

Our prices and Terms are the most reasonable. We deal very liberally with everybody. From distant buyers we invite orders by Mail, Telephone or Telegraph.

C. P. M. H. Leads all Competitors.
CHAS. F. COLWELL, Proprietor.

The only place in the City to get the latest

SCARFS.

Burns

—The Furnisher.

A MAN

Wants to see you Between Acts

JERRY McDONALD'S

Across the Road.

181 KING STREET.

Burns

* * **SAYS**
That the D B Sag Suit
Will lead this Fall.

AND HE IS RIGHT.

GREAT PRIZE SALE

Every Cash Customer buying One Dollar's
worth or more of

WALL PAPER, *
WINDOW SHADES,
CORNICE POLES,
ARTISTS' MATERIALS,
PICTURE FRAMES,
* PICTURES,
ETC., ETC., ETC.

Stands the chance of securing a Prize worth from \$1.00
to \$20.00 according to amount of purchase.

E. N. HUNT,
190 DUNDAS ST., LONDON.

NEXT ATTRACTION.

MONDAY, TUESDAY and WEDNESDAY,
MAY 22nd, 23rd 24th.

Grand Family Matinee Queen's Birthday.

POPULAR PRICES.
Best Reserved Seats 50 and 75 Cents.

The Funniest of Eccentric-Comedians,

EZRA * KENDALL

In His Funniest of Plays,

A PAIR OF KIDS

Supported by a splendid Company of Comedians, Vocalists
and Specialists, including the Little Prince of Comedians,

ARTHUR DUNN,

Of "Ali Baba," "Bluebeard Jr." the "Old Man of the Sea" of
"Sinbad," and late "Babes in the Wood" (specially engaged),
who will introduce His Original and Amusing
Specialties. Also the Peerless Dancer,

CHARLOTTA,

In her fascinating Serpentine, Wing and Sand Dancing

GILBERT SARONY,

The funny "Schoolma'am" of "Babes in the Wood."

STANLEY MACY,

Of "Kinderarten" fame, Kate Quinten, Mary Mac-
ready, Jessie Bertman, and other favorite artists.

8th Year.—FUNNIER THAN EVER.—8th.

Plan Opens Friday, 9 a.m.

POPULAR PRICES:

Circle 75c., Parquette 50c., first two rows Balcony
50c., balance Balcony reserved 35c., admission Balcony
25c., Gallery 15c.

Marshall's * Mammoth * Livery

IS THE LARGEST AND THE OLDEST
ESTABLISHMENT IN THE CITY.

DOES THE LEADING BUSINESS IN

Carriages, Cabs, Coupes, *
* Victorias, Busses, Etc.

Every kind of Conveyance can be had there on the
shortest notice, by Telephone No. 436.

JAS. S. MARSHALL, Proprietor.

Dundas Street, London, Ont.

LONDON Bill Posting Agency

BELTON & ROOTE, Proprietors.

BILL POSTING

Distributing & General Advertising Agents

Controls all the Bill Boards and Dead Walls throughout
the City. Population of City, 40,000.

All orders for Bill Posting, Distributing, Card Tacking
and General Advertising for Western Ontario will
receive prompt attention.

OFFICE: BOX OFFICE, OPERA HOUSE.

For Fashionable WELL MADE SUITS

... CALL ON ...

Burns

The Tailor,

Dundas Street.

Artistic * Floral * Design

EITHER WEDDING, PRESENTATION, DINNER TABLE, OR FUNERAL.

GO TO **DILLOWAY,**

The Leading Florist.

248 Dundas Street.

Choicest Cut Flowers Always on Hand.

TELEPHONE 597.

If you see it in the "London Free Press" it is so.

◀ AFTER THE PERFORMANCE ▶

→ STOP AT →

HARRY McKENNA'S,

—FOR—
Choice Havana Cigars & *
* * Tobacco Sundries.

225 Dundas Street.

Always Open After Performance.

SMITH BROS.

**Plumbers,
Steam and Gas Fitters.**

ESTIMATES FURNISHED ON APPLICATION.

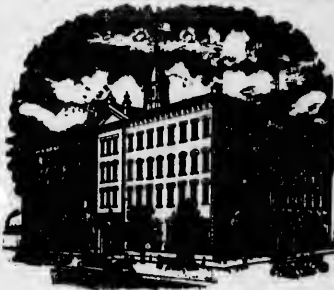
All Work Warranted. Terms Moderate.

376 RICHMOND STREET.
(Opposite Masonic Temple.)

Telephone No. 538.

THE TECUMSEH,

London, Ontario.



Leading Hotel of Western Ontario.

Large Sample Rooms Free of Charge.
Baggage and Passenger Elevator.

Only one Block from the Grand Opera House.

C. W. DAVIS,
PROPRIETOR.

White · Sulphur · Springs · Baths
FAMOUS HEALTH RESORT.
The Saratoga of Canada.
IN CONNECTION WITH THE HOTEL.

Great Attraction to Visitors Seeking Health.
C. W. DAVIS, A. D. HOLMAN,
Treasurer. Manager.

* THE LATEST ENGLISH *
Collars, · Cuffs · and · Shirts.
ALL SIZES ALWAYS IN STOCK.

Burns

DUNDAS STREET.

PROGRAMME CONTINUED.

PART FIRST.

- 1..... INTLABA-MKOSI.....KAFFIR
 - 2..... Q Qa Qa Qa.....KAFFIR
- A short piece in the Kaffir tongue (adapted to the music of Schuman's "Merry Peasant") giving a striking illustration of the *clicks* used in the native language. These *clicks* are considered to be the most charming part of the "taal" perhaps because of their being so difficult to acquire by Europeans.
- 3..... PART SONG.....ENGLISH
 - 4..... ULO TIXO MKULU.....KAFFIR
- This is the first music known to have been sung by Christian Kaffirs. The words and music are the original composition of Ntsikana, the first convert among the Amaxosa tribe.
- 5..... CHILDREN ASLEEP.....ENGLISH
 - 6..... MOTJIEVERAKATANG...DUTCH HOTTENTOT
- (A HUMOROUS HOTTENTOT SONG.)
- This song is supposed to be a passage at arms between a native woman, who is very fond of talking, and some of her people who are taunting her for her propensity to chatter so incessantly.
- 7..... DAWN OF DAY.....ENGLISH
 - 8..... THE LORD'S PRAYER.....ENGLISH
- This number is given by request. When the prayer was sung by the choir before the Queen, Her Majesty was greatly affected.

Programme Continued on Page 4.

—RECEIVED BY—

BELTZ

ENGLISH—LINCOLN AND BENNETT HAT
" WOODRUM HAT
" COOKSEY HAT
" STANLEY HAT.
AMERICAN—DUNLOP HAT
" MILLER'S HAT.
" YEONN'S HAT

Beltz's Spring Styles in Above Celebrated Makes.

THE LEADING JEWELRY HOUSE
OF LONDON,

—FOR—
**Diamonds, Watches, ·
· · and Fine Jewelry.**

OPERA GLASSES FOR RENT.
THOS. GILLEAN,
402 Richmond Street.
Issuer of Marriage Licenses.

For Fine Finished Artistic Photos
—GO TO—

Westlake's *
* **Famous Studio**
201 Dundas Street.

Get the Latest Novelties.
Photo Etchings and Bristle Finish.
STUDIO ALL ON GROUND FLOOR.
City Views can be had. Phone 571.

Wallace's Dining Hall
AND CONFECTIONERY.
354 Richmond Street.

Lunches at all hours.
Hot Tea and Coffee.
Oysters in every style.
Choice Cakes,
Candies, Etc.

GIVE US A CALL.

OFFICE RESTAURANT
Opposite the Masonic Temple, Richmond St.

**CHOICE WINES,
LIQUORS, ALES,
CIGARS, ETC.**

Restaurant on the European Plan.
OYSTERS IN EVERY STYLE.
D. SARE,
Proprietor.

Look out for the "London Free Press" on all early morning Trains.

VASELINE.

EVERYBODY knows the great value of this remedy in the household, but everybody does not know that the imitations of it, which some second class druggists dishonestly palm off on their customers, have little or no value. What should be understood by the public is, that it is not a mere question of comparative value between "Vaseline" and the imitations, but that the imitations do not effect the wonderful healing results of the world renowned "Vaseline," and that they are not the same thing as made in the same way. Besides this, many of the imitations are harmful, irritant and not safe to use, while true Vaseline is perfectly harmless.

Perfect safety therefore lies in buying only original packages put up by and marked with our name.

CHESEBROUGH M'F'G CO.

FLOWERS ❀

—FOR—
OPERA OR BALL

—AT—
GAMMAGE'S

Duffield Block, 213 Dundas Street.

FRESH EVERY DAY.

TELEPHONE 807.

"QUADRANTS"

Were Awarded the Only

* **GOLD MEDAL** *

—FOR—
CYCLES

At the recent (Kimberley) South African Exhibition.

ANOTHER SHIPMENT ARRIVED.

J. D. MCKENZIE & CO.

DUFFIELD BLOCK,

LONDON, - ONTARIO.

... LADIES' TAILOR-MADE ...
COSTUMES & RIDING HABITS.

Burns

154 Dundas Street

PROGRAMME CONTINUED.

PART SECOND.

9. **LIZALIS** KAFFIR

10. **MOLO-KE-DA** KAFFIR

The natives of South Africa, when travelling in parties have a singular habit of singing—keeping time to the melody with their feet. Standing upon a hill, you can hear their peculiar chant when the band is miles away.

Molo-ke-da is a representation of the effect produced by the gradual approach and disappearance of one of these parties who have just left their kraals to go into the towns in search of employment.

Perfect stillness is kindly requested during the singing of this piece.

11. **SINGAMA WELE (Song and Dance)** ... KAFFIR

The natives are exceedingly fond of singing and dancing. This song and dance is typical of how they spontaneously and at any time commencing their amusements. The lead is generally taken by a bass voice, but is never begun in exactly the same way.

12. **TYPICAL WEDDING SONG** KAFFIR

The song is purely native and the harmonies have not been in any way Europeanized; it is sung at the Wedding Feast by the friends of the Bridegroom. The Bride, whose sobs can be heard amid the general rejoicing, is finally led away by two of the guests to her husband's kraal which awaits her. At some of the marriages the festivities are kept up days and nights without cessation.

13. **AFRICA** KAFFIR

14. **THE BIG BABOON** ENGLISH
SOLO AND CHORUS.

"The Big Baboon" was specially composed for the African Native Choir, by JAMES HYDE, Esq., King Williamstown, (one of the first—if not the first—musician in South Africa) after he had attended one of their concerts given in this town.

15. **SEND THE LIGHT** ENGLISH

The words and music of this piece were composed expressly for the European tour of the African Choir, by gentlemen in South Africa, who were wishful the enterprise should be a success.

—GOD SAVE THE QUEEN.—

IMPORTANT.—The performances at this Theatre commence at 8:15 sharp in the evenings, and 2:15 sharp at matinees, and the public are respectfully invited to be in their seats prior to the hour named.

Opera Glasses can be rented by applying to Ushers or at Box Office.

❀ **THE PIANO** ❀

Used in the Orchestra is from the

GERHARD HEINTZMAN CO.

69 and 75 Sherbourne St., Toronto.

LONDON WAREROOM: 226 DUNDAS STREET.

W. T. STRONG,

Dispensing *

* * **Chemist**

184 Dundas Street,

LONDON, - - - ONTARIO.

Parisian Steam Laundry

73 and 75 DUNDAS ST.



Laundry work transferred free of charge to and from Toronto, Hamilton, Brantford, Woodstock, Stratford, Guelph, London, St. Thomas, Chatham, Windsor and Sarnia.

J. K. SPRY, Manager.

FROM A HEN COOP TO A MANSION

Every person contemplating the erection of anything, from a hen coop to a mansion, should not fail to call and inspect our stock of

LUMBER,
LATHS,
SHINGLES,

CEDAR POSTS,
FLOORING and
SIDING,

DRESSED, &c.

PRICES RIGHT.

Jas. H. Belton & Son

OFFICE AND YARDS:

241 YORK STREET

'PHONE 658.

