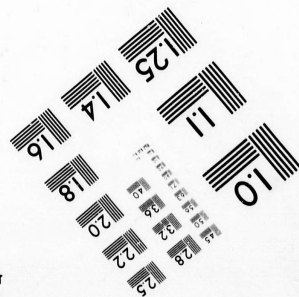
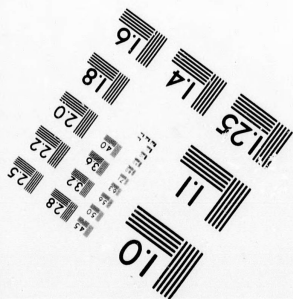
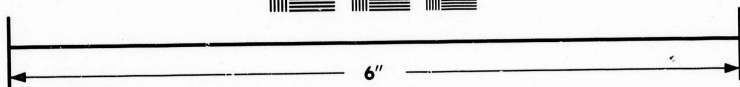
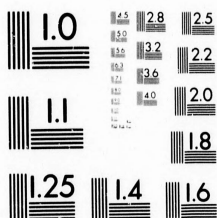


IMAGE EVALUATION TEST TARGET (MT-3)



Photographic
Sciences
Corporation

23 WEST MAIN STREET
WEBSTER, N.Y. 14580
(716) 872-4503

Can

**CIHM/ICMH
Microfiche
Series.**

**CIHM/ICMH
Collection de
microfiches.**



Canadian Institute for Historical Microreproductions

Institut canadien de microreproductions historiques

1979

Technical Notes / Notes techniques

The Institute has attempted to obtain the best original copy available for filming. Physical features of this copy which may alter any of the images in the reproduction are checked below.

L'Institut a microfilmé le meilleur exemplaire qu'il lui a été possible de se procurer. Certains défauts susceptibles de nuire à la qualité de la reproduction sont notés ci-dessous.

☐ Coloured covers/
Couvertures de couleur

☐ Coloured pages/
Pages de couleur

☐ Coloured maps/
Cartes géographiques en couleur

☐ Coloured plates/
Planches en couleur

☒ Pages discoloured, stained or foxed/
Pages décolorées, tachetées ou piquées

☐ Show through/
Transparence

☒ Tight binding (may cause shadows or
distortion along interior margin)/
Reliure serrée (peut causer de l'ombre ou
de la distortion le long de la marge
intérieure)

☐ Pages damaged/
Pages endommagées

☒ Additional comments/
Commentaires supplémentaires

Coloured ink on fold-out map

Bibliographic Notes / Notes bibliographiques

☐ Only edition available/
Seule édition disponible

☐ Pagination incorrect/
Erreurs de pagination

☐ Bound with other material/
Relié avec d'autres documents

☐ Pages missing/
Des pages manquent

☐ Cover title missing/
Le titre de couverture manque

☐ Maps missing/
Des cartes géographiques manquent

☐ Plates missing/
Des planches manquent

☐ Additional comments/
Commentaires supplémentaires

aire
tains
de la

The images appearing here are the best quality possible considering the condition and legibility of the original copy and in keeping with the filming contract specifications.

The last recorded frame on each microfiche shall contain the symbol ➡ (meaning "CONTINUED"), or the symbol ▼ (meaning "END"), whichever applies.

The original copy was borrowed from, and filmed with, the kind consent of the following institution:

National Library of Canada

Maps or plates too large to be entirely included in one exposure are filmed beginning in the upper left hand corner, left to right and top to bottom, as many frames as required. The following diagrams illustrate the method:

1	2	3
---	---	---

1
2
3

1	2	3
4	5	6

Les images suivantes ont été reproduites avec le plus grand soin, compte tenu de la condition et de la netteté de l'exemplaire filmé, et en conformité avec les conditions du contrat de filmage.

Un des symboles suivants apparaîtra sur la dernière image de chaque microfiche, selon le cas: le symbole ➡ signifie "A SUIVRE", le symbole ▼ signifie "FIN".

L'exemplaire filmé fut reproduit grâce à la générosité de l'établissement prêteur suivant :

Bibliothèque nationale du Canada

Les cartes ou les planches trop grandes pour être reproduites en un seul cliché sont filmées à partir de l'angle supérieure gauche, de gauche à droite et de haut en bas, en prenant le nombre d'images nécessaire. Le diagramme suivant illustre la méthode :

nt

We
for

Also

Hyslop, Caulfeild & Co.

13 and 17 Front Street West
Toronto

Whitworth Cycles



**Lead all
others**

We are sole agents
for the . .

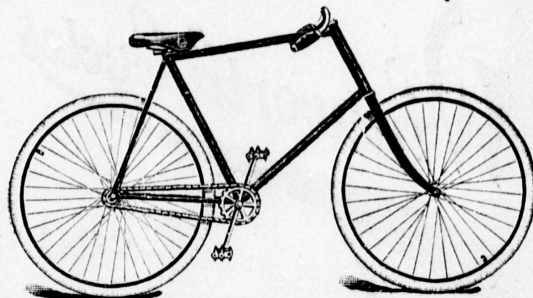
**Whitworth
Belsize
Fleet
Spartan
John Bull**

**Also agents for the celebrated Columbia and
Western Wheel Works machines**

The way to do it is to do it
....on the....

Stearns

This is the wheel
that has carried
Johnson to victory



Model "A" Stearns

We are Agents for such first-class
machines as

The Remington
The Falcon
New Hudson

American Rattan Co.

Cor. Niagara and
Tecumseh Streets **Toronto**

do it

arns



st-class

Hudson

tan Co.

oronto

THE :::

CYCLISTS'

ROAD GUIDE

OF :::

CANADA

WITH MAP



EDITED BY FRED. BRYERS.

*Entered according to the Act of Parliament of Canada, in the
year eighteen hundred and ninety-four, by W. H. Miln and Fred
Bryers in the office of the Minister of Agriculture.*

TORONTO :

W. H. MILN, PUBLISHER

:: 1894 ::

Dunlop Tires

DISCOUNT ALL OTHERS



Read what the Champion of the world
says regarding them :

Freehold, N.J., Nov. 4, 1893

The American Dunlop Tire Co.

Gentlemen :—I have tried several different makes of tires this season but find the Dunlop to be far superior.

After having won over 100 Firsts, I do not hesitate to recommend them as the best in the world.

Yours truly,

AMERICAN DUNLOP TIRE CO.

36 and 38 Lombard St., TORONTO

HERS

f the world

Nov. 4, 1893

Co.

several differ-
find the Dun-

Firsts, I do
as the best in

Wm. W. Wm.

TIRE CO.
ONTARIO

... PREFACE ...

Three years ago I was appointed chairman of a committee of the Canadian Wheelmen's Association, with instructions to prepare and publish a road guide of the Dominion.

The work of procuring information was allotted to various officers of the Association, a few of whom collected full reports of their districts, but, unfortunately, not sufficient to make it worth while to publish a new edition of the Guide Book.

A year ago, to preserve these routes, they were published in *Cycling*, and riders generally invited to send in reports of other routes. This invitation was accepted by many, and such a number of reports furnished that it became impossible to devote the space in *Cycling* which the subject required, and as many of its readers suggested that the routes be published, it was decided to do so, the "**CYCLISTS' ROAD GUIDE**" being the result.

ALL ROUTES described have been personally ridden over, within the last two years, by those who have furnished the descriptions.

THE DISTANCES between the various towns in the Province of Ontario, have been carefully checked, and, I believe, are correct to within a half mile.

THE NAMES of junction points, as well as the beginning and end of each route has been indicated in heavy type.

THE MAP has been carefully compiled and engraved especially for this book and will be of material assistance in tracing routes. Every place mentioned in the Guide Book has been located on it.

THE INDEX is complete and contains the name of each place in the Provinces of Ontario and Quebec mentioned in the book and the various pages upon which it will be found. As the routes in the other provinces were comparatively few it was deemed unnecessary to prepare an index for them.

Of course, it would have been impossible for me without a great deal of assistance from others, to have collected together the information contained in the pamphlet and to those who have thus assisted I return my sincere thanks.

If you are a stranger and in doubt as to where you will best enjoy a cycling trip, try Canada; it offers good roads, beautiful scenery, a temperate climate and a hospitable people.

FRED BRYERS.

Humber Rudge New Howe



have good reputations and have rapidly
increased in popularity and favor . . .



Cycle Repairs

We have a thoroughly equipped factory,
a staff of skilled mechanics, and every
facility for the prompt and efficient
execution of all kinds of repairs



THE H. P. Davies Co.

81 Yonge Street
Toronto

Abbotsford
Aberfoyle
Acacia, 3
Acton, 1
Adolphus
Adare, 2
Addison,
Adelaide
Ailsa Cra
Alberton
Aldboro,
Alfred, 5
Algonqu
Allan Pa
Allanfor
Allanbur
Aima, 27
Amberley
Amblesie
Amherst
Amiens,
Ancaster
Ardrea,
Arkona,
Arkwrig
Armadah
Arnot, 1
Arthur, 1
Arva (St
Ashley,
Atherley
Atherton
Atterclif
Atwood
Auburn,
Aultsvill
Aurora,
Avonton
Ayer's F
Aylmer,
Aylmer,
58
Ayr, 22

INDEX TO PLACES

Abbotsford, 86
 Aberfoyle, 11
 Acacia, 34
 Acton, 13
 Adolphustown, 74
 Adare, 20
 Addison, 79
 Adelaide, 15, 26
 Ailsa Craig, 35, 37
 Alberton, 16
 Aldboro, 16
 Alfred, 53
 Algonquin, 83
 Allan Park, 31
 Allanford, 46
 Allanburg, 61, 62
 Alma, 27
 Amberley, 18, 38
 Ambleside, 41
 Amherstburg, 42
 Amiens, 15, 37
 Ancaster, 16
 Ardrea, 25
 Arkona, 26
 Arkwright, 45
 Armadale, 48
 Arnot, 13
 Arthur, 11, 28
 Arva (St. John's), 20
 Ashley, 12, 13
 Atherley, 48
 Atherton, 39, 58
 Attercliffe, 59, 61
 Atwood (Newry), 40
 Auburn, 32
 Aultsville, 51
 Aurora, 25, 66
 Avonton, 40
 Ayer's Flats, 86
 Aylmer, O., 83
 Aylmer, O., 36, 38, 39
 58
 Ayr, 22

Back River, 85
 Baden, 14, 36
 Baillieboro, 68
 Ballantrae, 48
 Ballinafad, 14
 Ballyduff, 67
 Balderson, 78
 Balmoral, 59
 Baltimore, 69
 Barnett, 11
 Barrie, 25, 45
 Bath, 74
 Batisca, 89
 Battersea, 76
 Bayfield, 18, 24
 Bayham, 39
 Bayview, 45
 Barriefield, 76
 Beachville, 16
 Beaconsfield, 85
 Beamsville, 9
 Beaverton, 48, 65
 Belair, 89
 Belfast, 40
 Belgrave, 20, 32
 Belhaven, 47
 Belle River, 42
 Belleville, 50, 56, 72
 Bell's Corners, 77, 79
 81, 82
 Belmore, 41
 Berlin, 14, 33, 34, 36
 Bervie, 31
 Berthier, 88
 Bethany, 67
 Bewdley, 68
 Bic, 91
 Billing's Bridge, 79
 Birchtown, 77, 78, 81
 82
 Birmingham, 76
 Birr, 20
 Bison's Hotel, 83

Blackstock, 56
 Blenheim, 17, 57
 Bloomfield, 72
 Bloomingdale, 33
 Bloomsbury, 22
 Bluevale, 38
 Blue Bonnets, 84
 Blythe, 20, 32
 Bobcaygeon, 66
 Bond's Lake, 25
 Bord a Plouffe, 85
 Bornholm, 40
 Bornish, 18
 Bosworth, 27
 Bout de L'isle, 85, 88
 Bowood, 37
 Bowmanville, 49, 56
 Bradford, 25
 Brampton, 12, 13, 14
 Brantford, 16, 22, 35
 Brechin, 48
 Breslan, 14
 Brewer's Mills, 76
 Brewster, 18
 Brickley, 70, 71
 Bridgeport, 33
 Brighton, 50, 70, 72
 Brinkworth, 56
 Brisbane, 14, 30
 Britannia, 77, 78, 81
 82
 Britton, 28
 Brockville, 51, 79
 Brompton Falls, 87
 Bronte, 9
 Brooklyn, 65
 Brougham, 54
 Brownsville, 36
 Brucefield, 20, 24
 Brussels, 42
 Bryden, 39
 Buckhorn, 17
 Buffalo, N Y., 59



Get a Bicycle

that is thoroughly reliable with
a plainly worded guarantee . . .
backed by honesty and straight
dealing like the

Wanderer

Light, strong, easy running and
handsome; the outcome of eight-
teen years of bicycle building . .

The Wanderer Cycle Co.

Cor. Church and
Lombard Streets
Toronto

Buness
Burfor
Burget
Burgo
Burkto
Burnbr
Burling
Burritt
Buxton

Cacoun
Cainsvi
Caledon
Caledon
Camden
Camilla
Campbe
Canard
Canborc
Candasv
Canfield
Canning
Canton,
Cardinal
Carleton
Carlton,
Carlow,
Carrying
Carrville
Carsonby
Cascades
Cassmer
Cassburn
Castletor
Cathcart,
Cataraqu
Cavanvill
Cayuga,
Centralia
Centrevill
 aghan
Centrevill
Chambly,
Champlai
Chappel,
Chatswort
Chatham,

- Bunessan, 31
 Burford, 16, 35
 Burgersville, 21
 Burgoyne, 27, 45
 Burkton, 56
 Burnbrae, 56
 Burlington, 9
 Burritt's Rapids, 82
 Buxton, 41

 Cacouna, 91
 Cainsville, 16
 Caledon, 12
 Caledonia, 44, 61
 Camden East, 75
 Camilla, 12, 20
 Campbellford, 56, 71
 Canard River, 42
 Canboro, 59, 62
 Candaville, 59
 Canfield, 59
 Cannington, 55, 65
 Canton, 67
 Cardinal, 51
 Carleton Place, 81
 Carlton, 64
 Carlow, 32, 40
 Carrying Place, 72
 Carrville, 64
 Carsonby, 80
 Cascades, 84
 Cashmere, 29
 Cassburn, 53
 Castleton, 70
 Cathcart, 16
 Cataragui, 50, 75, 76
 Cavanville, 67
 Cayuga, 59, 61
 Centralia, 20
 Centreville (S. Mon-
 aghan), 68
 Centreville, 75
 Chambly, 86
 Champlain, 89
 Chappel, 42
 Chatsworth, 12, 13
 Chatham, 23, 29, 41

 Charing Cross, 41
 Chelsea, 84
 Cherry Valley, 74
 Cheviot, 20
 Chippawa Hill, 46
 Chippewa, 60
 Christie's Corners, 85
 Christina, 29
 Churchill, 25
 Clandeboye, 20, 37
 Clinton, 20, 23
 Clifford, 27
 Claremont, 54
 Clarence, 53
 Clarksburg, 45
 Clearville, 16
 Coaticook, 88
 Cobourg, 50, 69
 Codrington, 70, 71
 Colborne, 50, 70
 Cold Springs, 69
 Collingwood, 30, 31, 45
 Collin's Bay, 74
 Colloden, 36
 Columbus, 54
 Comber, 41
 Como, 53
 Compton, 88
 Conboy, 14
 Concord, 64
 Consecon, 72
 Conway, 74
 Cooksville, 10, 12, 14
 Copenhagen, 29
 Corbett, 18
 Cornwall, 51
 Cottam, 17
 Corunna, 23
 Courtright, 23
 Cotswold, 27
 Courtland, 39, 58
 Coteau, 51
 Craigeleigh, 45
 Craigsholm, 33
 Crathie, 18
 Creekbank, 34
 Crosshill, 32

 Crowland, 60
 Crumlin, 16
 Cumberland, 53
 Cumnock, 11
 Currie's, 21
 Curry's Hill, 51

 Dale, 68
 Danforth, 63
 Dawn Centre (Ruth-
 erford), 43
 Dawson, 79
 Dealtown, 17
 Decewsville, 59
 Dechenes' Crossing,
 83
 Delaware, 26, 29
 Delhi, 39, 58
 Dexter, 29
 Delta, 77
 Derby Centre, 87
 Derby Line, 87
 Deschambault, 89
 Deseronto, 73
 Dickinson's Landing,
 51
 Donegal, 28
 Dorking, 32, 28
 Dorval, 52, 85
 Dovercourt, 64
 Drayton, 28, 34
 Dresden, 43
 Drysdale, 18
 Dublin, 23
 Dumblane, 27
 Dundalk, 13
 Dundas, 11, 36
 Dunkeld, 27
 Dunbarton, 49
 Dungannon, 40
 Dunnville, 58, 61, 62
 Dunrobin, 82
 Dunsford, 66
 Duntroon, 30, 31, 45
 Durham, 11, 31
 Dutton, 57
 Dwyer Hill, 77

We are not liars!

**Neither are we given to blow and bluster
when we say there is no finer machine in
existence than the No. 22 "Quadrant"**

We speak the truth

We assert it as a fact and without fear of contradiction that nearly every maker of repute to-day has adopted in some form or other "Quadrant" ideas and "Quadrant" improvements—yet are our '94 patterns distinctly in advance of all, for our "tubular bracket," "patent split crank," and "system of lap brazed joints" are all new and have not yet been copied.

"There are no machines extant which possess superior advantages to the "Quadrant" cycles and tandems.—*The Cyclist (Eng.)*

●
CANADIAN REPRESENTATIVES:

**.. Carroll, McKenzie & Co...
London, Ontario**

Eagle.
Eastw
East I
East C
East J
East J
Eastm
Eastm
Eden,
Edeng
Edmo
Eglin
Egmo
Egrem
Elgin
Elgin
Elleng
Ellsm
Elmira
Elmvil
Elora,
Elsino
Ennish
Ennish
Epson
Eramc
Erie, s
Erin,
Essex,
Evert
Exeter

Fairba
Fallow
Falls c
60
Farnh
Farqu
Farrar
Fenella
Fenwic
Fergus
Fergus
Fernhi
Fingal
Fleetw
Fleshe
Forest

Eagle, 16
 Eastwood, 16, 18
 East Berkeley, 13
 East Oro, 25
 East Tilbury, 41
 East Toronto, 63
 Eastman Springs, 81
 Eastman, 86
 Eden, 34
 Edengrove, 27
 Edmonton, 12
 Eglinton, 25
 Egmondville, 23
 Egremont, 11
 Elginburg, 76
 Elginfield, 20
 Ellengowan, 27
 Ellsmere, 63
 Elmira, 34
 Elmville, 24
 Elora, 27, 33
 Elsinore, 46
 Enniskillen, 56
 Ennismore, 66
 Epsom, 47, 54
 Eramosa, 14, 30
 Erie, 59
 Erin, 30
 Essex, 17
 Everton, 30
 Exeter, 20, 24, 33

Fairbank, 64
 Fallowfield, 77, 79, 82
 Falls of Niagara, 9, 60
 Farnham, 11
 Farquhar, 33
 Farran's Point, 51
 Fenella, 69
 Fenwick, 61
 Fergus, 11, 33
 Ferguson Falls, 81
 Fernhill, 37
 Fingal, 16, 29, 57
 Fleetwood, 67
 Flesherston, 13, 31
 Forest, 26, 35

Forfar, 77
 Formosa, 41
 Fort Erie, 59, 60
 Forthill, 61
 Foxboro, 56, 72
 Frankford, 72
 Franktown, 77, 79
 Frankville, 79
 Fraserville, 68
 Freelon, 11
 Freeport, 34, 36
 Frostville, 86

Gadshill, 28
 Galt, 19, 36
 Gambridge, 48
 Gananoque, 51
 Garden Hill, 67
 Garnet, 44
 Gatineau Point, 84
 Georgetown, 13, 14
 Glanford (Mt. Hope)
 44, 61
 Glenannan, 20
 Glen Buell, 79
 Glencolin, 36
 Glen Morris, 19
 Glenora, 73, 74
 Glenville, 75
 Glen Walter, 51
 Gobles, 19
 Goderich, 18, 23, 24,
 32, 40
 Goldstone, 34
 Goodwood, 47
 Gordon, 42
 Gore's Landing, 69
 Gourack, 19
 Gowanstown, 39
 Grafton, 50
 Granby, 86
 Grand Bend, 18
 Grand Metis, 92
 Gravenhurst, 25
 Gravesend, 29, 38
 Granworth, 77
 Greenock, 21, 31

Green Point, 73
 Greensville, 11
 Greenway, 18
 Grimsby, 9, 62
 Grondines, 89
 Guelph, 11, 13, 14, 19,
 27, 30
 Guysboro, 39

Hagerman's Corners
 63
 Hagersville, 44
 Hamilton, 9, 11, 16,
 36, 44, 61
 Hammond, 28
 Hampton, 56
 Hanover, 31
 Harley, 35
 Harpley, 18
 Harrison, 27, 39
 Harrow, 43
 Harrowsmith, 75
 Harwood, 69
 Hastings, 56, 70, 71
 Haveland, 11
 Hawkesbury, 53
 Hawkestone, 25
 Hawthorne, 81
 Hay, 33
 Heidelberg, 32
 Hensall, 20
 Hespeler, 19, 34
 Highland Creek, 19
 Hillhurst, 88
 Hillier, 72
 Hillsburg, 30
 Hilton, 70
 Hintonburg, 77, 78,
 80, 81, 82
 Hochelaga, 85, 88
 Holbrook, 21
 Holland Landing, 25
 Holmesville, 23
 Holyrood, 40
 Homer, 9
 Horning's Mills, 30
 Hudson, 53

- Humber, 9, 64
 Humberstone, 58, 62
 Hull, Q., 83, 84
 Hyde Park, 15

 Ida, 67
 Indian River, 55
 Ingersoll, 16, 24, 34
 International Bridge
 59, 60
 Inverary, 76
 Invermay, 45
 Iona, 57
 Ironsides, 83, 84
 Iroquois, 51
 Isle Verte, 91

 Jackson's Point, 47,
 48, 49, 54
 Jackson, 46
 Jamestown, 42
 Jarvis, 39, 44, 59
 Johnston's Mills, 18
 Jordan, 9

 Kamouraska, 91
 Keith, 43
 Kelvin, 21
 Kemptville, 80
 Kenilworth, 11
 Kentbridge, 29
 Kertch, 15, 35
 Keswick, 47
 Kettleby, 66
 Keyser, 26
 Kilsyth, 45
 Kincardine, 18, 31, 38
 King, 65
 Kingsbridge, 18
 Kingston Mills, 76
 Kingston, 50, 51, 74,
 75, 76
 Kingsville, 43
 Kintail, 18
 Kintore, 24
 Kinloss, 31, 40
 Kinlough, 40

 Kippen, 20
 Kirby, 67
 Kirkton, 24
 Kirk's Ferry, 84

 Lachine, 52, 84
 Lachrevrotiere, 89
 Lakefield, 68
 Lambeth, 16, 20, 26,
 29
 Lambton Mills, 10,
 12, 14, 64
 Lanark, 78, 81
 Lancaster, 51
 Langford, 16
 Lanoraie, 88
 Lansdowne, 51
 L'Orignal, 53
 Latona, 11
 La Valtrie, 88
 Lawrenceville, 87
 Leadbury, 42
 Leamington, 17, 43
 Lemonville, 47
 Lennoxville, 88
 L'Epiphanie, 88
 Levis, 9
 Lindsay, 55, 66, 67
 Linwood, 32
 L'Islet, 91
 Listowel, 28, 32, 38,
 39
 Little Metis, 92
 Liverpool Market, 49
 Lloydtown, 66
 Lobo, 15
 Lochalsh, 38
 Lombardy, 78
 Londesboro, 20
 London, 15, 16, 20, 29
 Long Hill, 83
 Longueuil, 86
 Longue Pointe, 85,
 88
 Lorette, 89
 Lorne Park, 9
 Louiseville, 89
 Louisville, 29

 Lucan, 20
 Lucknow, 38, 40
 Lyndhurst, 77
 Lynn's Corners, 21,
 35
 Lyn, 51

 Macton, 32
 Magog, 86
 Maidstone, 17, 41
 Maitland, 51, 83
 Mallory's Corners 70
 71
 Mallorytown, 51
 Malvern, 48
 Manchester, 65
 Mandamin, 46
 Manilla, 55, 65
 Manotick, 80
 Maple, 65
 Maple Grove, 37
 Maple Hill, 31
 Maple Valley, 30
 Marden, 11, 27
 Marieville, 86
 Markdale, 13
 Markham, 48, 63
 Marshville, 58
 Maskinonge, 89
 Masonville, 20
 Matane, 92
 Maxwell, 31
 Mayfair, 29
 McIntyre's Corners,
 24
 Meaford, 45
 Medina, 24
 Melbourne, Que., 87
 Melburne, Ont., 29
 Menie, 56
 Merlin, 41
 Merrickville, 78, 82
 Merritton, 9, 61, 62
 Merivale, 80
 Metcalfe, 79
 Meyersburg, 71
 Midhurst, 45
 Mildmay, 27

Milfo
 Millb
 Milles
 Millh
 Millik
 Millte
 Milve
 Minne
 Mitch
 Moha
 Moles
 Mont
 Montr
 Montr
 86,
 Moray
 Morga
 Morpe
 Morris
 Morris
 Morris
 Mosbo
 Mount
 Mount
 Mount
 Mount
 ford
 Mount
 Mount
 Mount
 Mt. Bri
 Murdoc
 Murval
 Myrtle,

 Nairn, ;
 Nantico
 Napane
 Napane
 Nappert
 Nelles' C
 New Du
 Newmar
 New Du
 Newark,
 New Ha
 Newbliss
 Newburg

- on, 20
 now, 38, 40
 Hurst, 77
 's Corners, 21,
 51
 on, 32
 og, 86
 stone, 17, 41
 and, 51, 83
 ry's Corners 70
 rytown, 51
 rn, 48
 hester, 65
 amin, 46
 la, 55, 65
 tick, 80
 , 65
 Grove, 37
 Hill, 31
 Valley, 30
 n, 11, 27
 ille, 86
 ale, 13
 am, 48, 63
 ville, 58
 onge, 89
 ville, 20
 , 92
 ll, 31
 r, 29
 re's Corners,
 1, 45
 , 24
 rne, Que., 87
 ie, Ont., 29
 56
 41
 ville, 78, 82
 n, 9, 61, 62
 e, 80
 , 79
 urg, 71
 it, 45
 , 27
- Milford, 74
 Millbrook, 67, 68
 Milles Roches, 51
 Millhaven, 74
 Milliken, 63
 Milltown, 50
 Milverton, 28
 Minnesing, 45
 Mitchell, 23, 33, 40
 Mohawk, 22
 Molesworth, 38
 Montague, 78
 Montmagny, 91
 Montreal, 52, 84, 85,
 86, 88
 Moray, 18
 Morganston, 70
 Morpeth, 17
 Morrisbank, 38, 42
 Morrisburg, 51
 Morrison, 11
 Mosboro, 14
 Mount Forest, 11
 Mount Vernon, 16, 35
 Mount Elgin, 34, 35
 Mount Salem, 38
 Mount Hope, (Glan-
 ford), 44, 61
 Mount Albert, 49
 Mount Healey, 61
 Mount Pleasant, 67
 Mt. Bridges, 26
 Murdock, 11
 Murvale, 75
 Myrtle, 65
 Nairn, 37
 Nanticoke, 58
 Napanee Mills, 75
 Napanee, 50, 73, 75
 Napperton, 37
 Nelles' Corners, 59
 New Dundee, 22
 Newmarket, 25, 47
 New Durham, 35
 Newark, 35
 New Hamburg, 37
 Newbliss, 79
 Newburg, 75
- New Sarum, 39, 57
 Newcastle, 49, 67
 Newcombe's Mills, 70
 71, 72
 Newport, Vt., 87
 Newry, (Atwood), 40
 Newtonville, 49
 New Germany, 60
 Niagara Falls Town,
 9, 60
 Niagara on the Lake
 9, 60
 Nile, 40
 Norval, 13, 14
 North Hamburg, 14
 North Bruce, 18
 Norwich, 21, 35
 North Seneca, 44, 61
 Norway, 48, 49
 Norwood, 56
 North Glanford, 61
 Norham, 70, 71
 Notre Dame du Port-
 age, 91
 Nottawa, 30, 31, 45
 N. Gower, 80, 82
 N. Augusta, 82
 N. Wakefield, 84
 Numogate, 79
 Oaklands, 22
 Oakville, 9, 10
 Oakwood, 55
 Odessa, 50
 Oil City, 43, 44
 Oil Springs, 43, 44
 Oldcastle, 17, 41
 Oldfield, 23
 Oliver's Ferry, 77, 78
 Omemee, 55, 67
 Oneida, 44
 Orangeville, 12, 28,
 30, 33
 Orchard, 11
 Orillia, 25, 48
 Orono, 67
 Orwell, 39, 58
 Oshawa, 49, 54
- Ospringe, 30
 Ostrander, 34
 Ottawa, 53, 77, 78, 79
 80, 81, 82, 83, 84
 Oungah, 23
 Owen Sound, 12, 13,
 45, 46
 Painswick, 25
 Paisley, 27
 Palmerston, 27, 39
 Palmyra, 16
 Paris, 19, 22
 Parker, 27, 28
 Parkhill, 18, 35
 Patillo, 42
 Pefferlaw, 55
 Perrytown, 7
 Perth, 77, 78
 Peterboro', 55, 66, 68
 Petersburg, 14, 21, 36
 Petherton, 11
 Petrolia, 43, 44
 Phillipsville, 77
 Piche, 84
 Pickering, 49, 54
 Picton, 72, 73, 74
 Pike's Creek, 42
 Piles Branch, 89
 Pine River, 18, 38
 Pine Orchard, 47
 Pitt's Ferry, 51
 Plainville, 69
 Plantagenet, 53
 Poole, 28
 Poplar Hill, 15
 Port Credit, 9
 Port Talbot, 16
 Port Elgin, 18, 27, 45
 46
 Port Albert, 18
 Port Stanley, 20, 29
 Port Dover, 21, 44, 58
 59
 Port Lambton, 23
 Port Bruce, 29
 Port Burwell, 29, 34
 38

- Point aux Trembles, 88
 Point du Lac, 89
 Point Fortune, 53
 Pointe Claire, 51, 85
 Pontypool, 67
 Pont Rouge, 89
 Port Perry, 47, 54, 56
 65
 Port Hope, 50, 67, 68
 Port Colborne, 62
 Port Dalhousie, 62
 Port Robinson, 62
 Portland, 77
 Port Elmsley, 78
 Portneuf, 89
 Pottageville, 66
 Prescott, 51, 80
 Preston, 19, 36
 Priceville, 31
 Princeton, 19
 Prospect, 77, 79
 Proton, 13
 Puslinch, 11

 Quebec, 89
 Queenston, 9, 60
 Queensville, 47

 Raglan, 54
 Ravenshoe Station, 49, 54
 Rainham Centre, 58
 Ramsey's Corners, 81
 Reaboro, 55, 67
 Reading, 30, 33
 Reaford, 55, 67
 Reed's Corners, 15, 35
 Renton, 39
 Repentigny, 88
 Richmond Hill, 25, 65
 Richmond, Ont., 77, 79, 82
 Richmond, Que., 87
 Ridgetown, 57
 Ridgeway, 58
 Ridgeville, 61
 Rigaud, 3

 Rimouski, 91
 Ringwood, 47, 48
 Riversdale, 31
 Riverston, 11
 Riviere du Loup, 91
 Roche's Point, 47, 48
 Rockford, 13
 Rockland, 53
 Rockton, 36
 Rockwood, 12, 13
 Romney, 17
 Rosa, 71
 Roseneath, 70
 Roseville, 22
 Rossmount, 68
 Rothsay, 27
 Rouge, 49
 Rougemont, 86
 Round Plains, 21
 Russelldale, 33
 Rutherford (Dawn Centre), 43
 Ruthven, 17
 Ryckman's Corners, 44, 61

 Salford, 34
 Salmon Point, 74
 Sandwich, 42
 Sandford, 54
 Sandbanks, 73
 Sandhurst, 74
 Sarnia, 15, 23, 44, 46
 Sault au Recollet, 85
 86
 Scarboro, 49
 Schomberg, 66
 Scotland, 21
 Seaforth, 23, 42
 Seagrave, 65
 Sebringville, 23, 40
 Seeley's Bay, 77
 Selkirk, 58
 Severn Bridge, 25
 Shakespeare, 14, 22
 37
 Shannonville, 50
 Shanty Bay, 25


 Sharon, 47
 Shedden, 57
 Sheffield, 36
 Shelburne, 13, 30
 Shephardton, 18
 Sherbrooke, 87
 Sherkston, 58
 Simcoe, 21, 22, 39, 58
 Singhampton, 30, 31
 Smithville, 62
 Smith's Falls, 78, 79
 Sombra, 23
 Sonya, 65
 Southampton, 18, 27
 46
 South Dummer, 55
 South Cayuga, 58
 South Monaghan (Centreville), 68
 South Gloucester, 79
 South March, 82
 South Stukley, 86
 Spencerville, 80
 Springfield, 10, 36, 58
 Springbank, 18
 Springfield, 68
 St. Anne's, 51, 85
 St. Anne de Stukley, 87
 St. Anne de la Parade, 89
 St. Barthelemy, 89
 St. Basil, 89
 St. Catharines, 9, 61, 62, 63
 St. Cesaire, 86
 St. Clement's, 32
 St. Cuthbert, 88
 St. Dominique, 51
 St. David's, 9, 60
 St. Fabien, 91
 St. Flavie, 91
 St. Genevieve, 85
 St. Jacob's, 34
 St. John's (Arva), 20
 St. Joseph, 53
 St. Mary's, 14, 24, 40
 St. Michel, 91

St. R
 St. T
 21
 St. Vi
 Staff
 Stans
 Stay
 Steve
 Stirling
 Stitts
 Stouf
 Stock
 Stone
 Strab
 Strati
 28,
 Strati
 Strati
 Sulliv
 Sumn
 Sumn
 14
 Sunbi
 Sunni
 Sund
 Sutto
 Syder
 Talbo
 Tamv
 Tara,
 Tavis
 Tecur
 Teesv
 Temp
 Temp
 Terre
 Tervio
 Tham
 Tham
 Thedf
 Thorc
 Thorr
 Thorr
 Thorn
 Three
 Tilson
 Tinca

aron, 47
 edden, 57
 effield, 36
 elburne, 13, 30
 ephardton, 18
 erbroke, 87
 erkston, 58
 ncoe, 21, 22, 39, 58
 ghampton, 30, 31
 ithville, 62
 ith's Falls, 78, 79
 nbra, 23
 aya, 65
 athampton, 18, 27
 46
 ith Dummer, 55
 ith Cayuga, 58
 ith Monaghan
 (Centreville), 68
 ith Gloucester, 79
 ith March, 82
 ith Stukley, 86
 ncerville, 80
 ingfield, 10, 36, 58
 ingbank, 18
 ingville, 68
 Anne's, 51, 85
 Anne de Stukley,
 37
 Anne de la Par-
 le, 89
 Barthelemi, 89
 Basil, 89
 Catharines, 9, 61,
 2, 63
 Cesaire, 86
 Clement's, 32
 Cuthbert, 88
 Dominique, 51
 David's, 9, 60
 Fabien, 91
 Flavie, 91
 Genevieve, 85
 Jacob's, 34
 John's (Arva), 20
 Joseph, 53
 Mary's, 14, 24, 40
 Michel, 91

St. Roche, 91
 St. Thomas, 16, 20,
 26, 39, 57
 St. Vincent de Paul, 86
 Staffordville, 34, 39
 Stanstead, 87
 Stayner, 45
 Stevensville, 60
 Stirling, 56
 Stittsville, 81
 Stouffville, 47
 Stockdale, 72
 Stoney Creek, 9
 Strabane, 11
 Stratford, 14, 22, 23,
 28, 37
 Strathroy, 15, 18, 26, 37
 Strathallan, 22
 Strathburn, 29
 Sullivan, 11
 Summerstown, 51
 Summerville, 10, 12,
 14
 Sunbury, 76
 Sunnidale, 45
 Sunderland, 55
 Sutton, 47, 49, 54, 55
 Sydenham, 76
 Talbotville, 16, 20, 26
 Tamworth, 75
 Tara, 45
 Tavistock, 22
 Tecumseh, 42
 Teeswater, 20
 Templeton, 84
 Tempo, 16, 20, 26
 Terrebonne, 86
 Teviotdale, 27
 Thamesford, 16, 24
 Thamesville, 29
 Thedford, 35
 Thorold, 9, 61, 62
 Thorndale, 15
 Thornhill, 25
 Thornbury, 45
 Three Rivers, 89
 Tilsonburg, 34, 58
 Tincap, 79
 Tiverton, 18
 Toledo, 79
 Topping, 28
 Toronto, 9, 10, 12, 14
 25, 48, 49, 63, 64
 Toronto Junction, 10
 12, 14
 Trafalgar, 10
 Tralee, 28, 32
 Trenton, 50, 71, 72
 Trois Pistoles, 91
 Trudell, 41
 Tyendenaga, 50
 Underwood, 18
 Union, 20
 Unionville, 63
 Uptergrove, 48
 Urtoveter, 35
 Uxbridge, 47, 54
 Vallentyne, 54
 Valois, 52, 85
 Vandreuil, 51, 53
 Varna, 24
 Varney, 11
 Vaucuse, 88
 Verchoyle, 35
 Vereker, 43
 Victoria, 12
 Victoria Corners, 54
 Vienna, 34
 Virgil, 9
 Virginia, 47
 Vivian, 48, 55
 Walbridge, 72
 Waldemar, 28
 Walkerton, 21, 27, 31
 41
 Walkerville, 42
 Wallaceown, 16, 57
 Wallaceburg, 23, 43
 Walton's, 42
 Washago, 25
 Wanstead, 4
 Wardsville, 29
 Warkworth, 70, 71
 Warner, 62
 Warwick, 15
 Washburn, 76

Waterford, 22, 37, 46
 Waterloo, Ont. 32, 34
 Waterloo, Q., 86, 87
 Waterville, 88
 Welcome, 49
 Welcome, 67
 Welland, 59, 62, 63
 Wellandport, 59, 61
 Wellington, 72
 Wendover, 53
 West Monkton, 40
 West Montrose, 33
 West Flamboro, 36
 Westbrook, 50
 Weston, 64
 W. Osgoode, 80
 Wheatley, 17
 Whitby, 49, 65
 Wicklow, 50
 Wilfrid, 55
 Williamsford, 13
 Willow Grove, 44
 Winchelsea, 24
 Windsor, 17, 41, 42
 Windsor Mills, 87
 Wingham, 20, 32, 38
 Winona, 9
 Winterburne, 33
 Winthrop, 42
 Woburn, 48
 Woodford, 45
 Woodslee, 41
 Woodstock, 16, 19, 21
 22
 Woodrow's Corners
 73
 Wooler, 70, 72
 Wroxeter, 42
 Wyoming, 35, 43, 46
 Yamachiche, 89
 Yarker, 75
 Yarmouth Centre,
 39, 57
 York, 61
 Young's Point, 68, 74
 Zephyr, 49, 54

We
Manufacture 
absolutely
the best line of

**Jerseys
Sweaters
Stockings
Etc.**

 To order, in any color
or club design

Quotations and discounts
given to clubs

Descriptive Catalogue
on application

The H. P. Davies Co.

81 Yonge Street
Toronto

MILE/

2

3

6

1.5

2.5,

7

6

5.5

5

5

8

7

6.25

5

5.5

2.5

8

5.5

3.5

6.5

3.5

5

3

Niagara Falls to Toronto.

MILEAGE	TOWNS.	HOTELS.
	Falls of Niagara	Parkside Inn.
2	Niagara Falls Town.....	American.
3	St. David's (a).....	
6	Thorold	Welland.
1.5	Merritton.....	
2.5, 15	St. Catharines	Grand Central.
7	Jordan,.....	
6	Beamsville.....	Mrs. Couse.
5.5	Grimsby	Mansion.
5	Winona	
5	Stoney Creek.....	
8 51.5	Hamilton	Royal.
7	Burlington	
6.25	Bronte.....	
5 69.75	Oakville (b)... ..	Oakville House.
5.5	Lorne Park.....	Hotel Louise.
2.5	Port Credit.....	
8	Humber	Nurse's.
5.5 91.25	Toronto	Walker.

A Right hand—East.

	St. David's	
3.5	Queenston.....	
6.5	Niagara (on the Lake)... ..	Long's
3.5	Virgil.....	
5	Homer.....	
3	St. Catharines	Grand Central.

NIAGARA FALLS TO TORONTO—Continued.

B Left hand—North.

MILEAGE.	TOWNS.	HOTELS	MILEAGE
	Oakville	Oakville House.	
4	Trafalgar.....		5
5	Springfield.....		2.5
2.75	Cooksville	King's.	3.75
4.25	Summerville.....		3
4	Lambton Mills.....	Scott's.	2.25
3	Toronto Junction.....	Occidental.	4.5
5	Toronto	Walker.	1.25
			2.5

The tourist who has the time at his disposal should leave the Falls by the River road to Niagara Falls town, thence to St. David's, branching east from that village to Queenston and along the River road to Niagara-on-the-Lake. By taking this route the traveler will be in sight of the river nearly the whole distance and see the grand show sights, including the Falls, Suspension and Cantilever bridges, Whirlpool, Queenston Heights and Brock's monument. The road is fairly good and all down hill, but do not coast. From Niagara-on-the-Lake take the westerly stone road direct to St. Catharines. A more direct route to St. Catharines from the Falls is *via* St. David's and Thorold, branching west at St. David's. Leave St. Catharines by crossing canal and climbing western hill, thence direct to Hamilton, the whole road being good gravel and macadam. Leave Hamilton by York street and Lake Shore road to Oakville, where choice of routes is offered to Toronto, the northerly route *via* Trafalgar and Dundas street being the better, though the Lake Shore road *via* Port Credit is not bad unless after rain, and is certainly more picturesque.

—Continued.

Hamilton to Owen Sound.

HOTELS	MILEAGE.	TOWNS.	HOTELS.
Dakville House.		Hamilton	Royal.
	5	Dundas	Collins' Hotel.
	2.5	Greensville.....	
King's.	3.75	Haveland.....	
	3	Strabane.....	
Scott's.	2.25	Freelton	Duffy's Hotel.
Occidental.	4.5	Puslinch	
Walker.	1.25	Morrison	
	2.5	Aberfoyle.....	
Disposal should	4	Farnham	
Niagara Falls	3.5	Guelph	Royal Hotel.
east from that		Marden	Burn's.
River road to	3	Barnett	
oute the travel-	5	Fergus	Commercial.
the whole dis-	4	Cumnock.....	
including the	5.5	Arthur.....	Queen's.
es, Whirlpool,	6.75	Petherton	
ument. The	4.25	Kenilworth.....	
do not coast.	3	Riverston.....	
resterly stone	1.75	Mount Forest	Coyne House.
irect route to	5	Egremont	
. David's and	2.5	Orchard	
s. Leave St.	5.5	Murdoch.....	
ibing western	1	Varney	
le road being	2.25	Durham	Middaugh.
ilton by York	3.5	Latona.....	
where choice	7.5	Sullivan.....	
erly route <i>via</i>	7		
etter, though			
ot bad unless			
que.			

HAMILTON TO OWEN SOUND—Continued.

MILEAGE.	TOWNS.	HOTELS.
4	Chatsworth	Somers.
4	Ashley	
1	Rockford	
3	III.75 Owen Sound	Paterson House.

Leave Hamilton by King street west, following stone road through Main street of Dundas, under G.T.R. tracks to Greensville, continuing north to Freelon. (The latter part of the road is somewhat heavy after rain, as it passes through a swamp.) A good gravel road runs from Freelon to Guelph. Leave Guelph by Woolwich street proceeding to Marden, where take the right fork of road going north-east to Fergus, thence to Mount Forest, the whole distance being over fine gravel roads. Leave Mount Forest by the Garafraxa road which leads straight into Owen Sound. These roads are somewhat hilly, but but surface generally is good, with some perfect stretches.

Toronto to Owen Sound.

	Toronto	Walker.
5	Toronto Junction	Occidental.
3	Lambton Mills	Scott's.
4	Summerville	
4.25	Cooksville	King's.
9.5	25.75 Brampton (a)	Queen's.
4.5	Edmonton	
3.5	Victoria	
8	Caledon	
6.25	48 Orangeville	Queen's.
6	Camilla	

MILEAGE

9.5

11.5

5

5

6.25

5

3.75

3.75

3.75

4

1

3

7

3.5

8

7.5

6

Le
avenu
road (over f
are le
Orang
near C
into C
ville t
the di
clay

TORONTO TO OWEN SOUND—Continued.

MILEAGE.	TOWNS.	HOTELS.
9.5	Shelburne.....	Royal.
11.5	Dundalk.....	Connor.
5	Proton.....	McLean's.
5 85	Flesherton	Flesherton.
6.25	Markdale.....	
5	E. Berkeley.....	
3.75	Williamsford.....	
3.75	Arnott.....	
3.75 107.5	Chatsworth	Somers.
4	Ashley.....	
1	Rockford.....	
3 115.5	Owen Sound	Paterson.
	(a) Left-hand, west.	
	Brampton	Queen's.
7	Norval.....	
3.5	Georgetown	Clark.
8	Acton.....	Agnew's.
7.5	Rockwood...	
6 32	Guelph	Royal.

Leave Toronto by Bloor street west to St. Clarens avenue, thence into Toronto Junction and *via* Dundas road (good macadam) to Cooksville, where turn north over fair clay road to Brampton, to which point roads are level or slightly undulating. From Brampton to Orangeville the road is fair clay for some distance, but near Caledon becomes sandy and very hilly too; going into Orangeville is a good gravel road. From Orangeville to Owen Sound the road is fairly good most of the distance and very fine towards the end, but some clay and sand are interspersed; the hills are high

TORONTO TO OWEN SOUND—*Continued.*

and not infrequent, An alternative route is to proceed west from Brampton over fair gravel road to Georgetown with poor sandy road thence to Rockwood and good gravel into Guelph, where Hamilton to Owen Sound route is joined.

Toronto to Sarnia.

MILEAGE.	TOWNS.	HOTELS.
	Toronto	Walker.
5	Toronto Junction	Occidental.
3	Lambton.....	Scott's.
4	Summerville.....	
4.25	Cooksville	King's.
9.5 25.75	Brampton	Queen's
7	Norval.....	
3.5	Georgetown	Clark.
5.75	Ballinafad.....	
4.5	Brisbane	
0.5	Eramosa.....	
5.5 62.5	Guelph	Royal.
5.25	Mosboro	
4.75	Breslau	
4 76.5	Berlin	Walper.
7	Petersburg	Wuerschmidt.
3	Baden.....	Krauss.
4	N. Hamburg	Commercial.
6.5	Shakespeare	
7.5 104.5	Stratford	Albion.
6.25	Conboy	
6.25	St. Mary's	Windsor.

MILEAGE

15

12.5

6

5.5

4.5

2.5

6.5

7

11.75

5

4.75

14.5

Lea

Claren

ville c

road to

gravel

gravel

From

Guelph

Leave

Stratf

Turn

into T

are a

From

billiar

saved

town

it is a

continued.

is to proceed
d to George-
ockwood and
ton to Owen

TORONTO TO SARNIA—Continued.

HOTELS.

Walker.

ccidental.

cott's.

ing's.

ueen's

ark.

oyal.

alper.

uerschmidt.

rauss.

ommercial.

bion.

indsor.

MILEAGE.	TOWNS.	HOTELS.
15	Thorndale	
12.5 144.5	London.....	Grigg.
6	Hyde Park.....	
5.5	Lobo	
4.5	Poplar Hill	
2.5	Amiens	
6.5 169.5	Strathroy.....	Queen's.
7	Adelaide	
11.75	Warwick.....	Restorick.
5	Kertch.....	
4.75	Reede's Corners.....	
14.5 212.5	Sarnia.....	Belchamber.

Leave Toronto by Bloor street west and St. Clarens avenue to Toronto Junction, thence to Cooksville over macadam. Here turn north over clay road to Brampton and west to Georgetown (clay and gravel). Proceed direct north to Brisbane (rough gravel), thence south-east to Guelph (fine gravel). From Georgetown through Acton and Rockwood to Guelph is five miles shorter but is over rough roads. Leave Guelph by Elora road, thence direct west to Stratford and south-west to St. Mary's (good gravel). Turn south along county line for ten miles and west into Thorndale, then south to London road. There are a number of hills but none of any consequence. From London to Sarnia is beautiful—level as a billiard table and of fine gravel. Six miles may be saved by not entering Strathroy, but as that is a fine town and hotel accommodation is scarce elsewhere, it is advisable to run down there.

Hamilton to Windsor.

MILEAGE.	TOWNS.	HOTELS.
	Hamilton	Royal.
7	Ancaster	Ancaster House.
5.5	Alberton	
4	Langford	Maple Leaf.
4	Cainsville	
3 23.5	Brantford	Kerby.
7	Mt. Vernon	
1.75	Burford	Barnea.
4.5	Cathcart	
8	Eastwood	Cornish's.
5 49.75	Woodstock	Commercial.
4.5	Beachville	
4.5	Ingersoll	Atlantic.
6	Thamesford	McCartney's.
8	Crumlin	
5 77.75	London	Grigg.
8	Lambeth	
5	Tempo	
2.5	Talbotville	
4 97.25	St. Thomas	Grand Central.
7.5	Fingal	McCall's.
5.5	Port Talbot	
5 115.25	Wallacetown	Ontario House.
6.75	Eagle	
4.5	Aldboro'	
6.25	Clearville	Wiley's.
3.25	Palmyra	

MILEAGE

5

9

4

4

15

6

7

4

7.5

5.5

4

4

8

Lea
ton and
ter ove
Brantf
is fairl
At afte
Woodh
over g
street l
and so
Talbot
town,
heavy
with n
hills d
for the
Blenhe

HAMILTON TO WINDSOR—Continued.

	MILEAGE.	TOWNS.	HOTELS.
HOTELS.	5	Morpeth	American.
oyal.	9 150	Blenheim	Sheldon.
aster House.	4	Buckhorn	
	4	Dealtown	
ple Leaf.	15	Romney	
	6	Wheatley	Commercial.
rby.	7 186	Leamington	Scott.
	4	Ruthven	
rne.	7.5	Cottam	
	5.5	Essex	Royal.
rnish's.	4	Maidstone	
mmercial.	4	Oldcastle	
antic.	8 219	Windsor	Crawford.
C Cartney's.			

Leave Hamilton by King street west, until Hamilton and Dundas R.R. is passed, then south to Ancaster over good stone road, rather hilly; thence west to Brantford, road fair. From Brantford to Woodstock is fairly level, mostly good gravel with some sand, and after rain. Leave Woodstock by Dundas street to Woodburn Mills, then west to Ingersoll and London, over good gravel roads. Leave London by York street bridge and along Wharnccliffe road to Lambeth and south to St. Thomas, good gravel. Thence *via* Talbot road to Port Talbot and north-west to Wallacetown, the latter part of the road being hilly. Very heavy sand between Wallacetown and Clearville, with many hills, then road improves in surface and hills disappear, becoming finally a regular race track for the last 45 miles. See also route Wallacetown to Blenheim.

Southampton to Strathroy.

MILEAGE.	TOWNS.	HOTELS.
	Southampton	Teahan's.
4	Port Elgin.....	American.
5	N. Bruce.....	
5	Underwood	
5	Tiverton	
8.75 27.75	Kincardine	Royal.
7	Pine River.....	
4.5	Amberley.....	
5.5	Kintail.....	
	Kingsbridge	
3	Port Albert.....	
3	Shepardton	
5 58.75	Goderich	Albion.
12	Bayfield	
7.5	Drysdale.....	
3	Johnson's Mills.....	
4.5	Brewster.....	
2 87.75	Grand Bend	Grand Bend.
4.5	Harpley	
2	Greenway	
2.5	Corbett.....	
3	Moray.....	
3 102.75	Parkhill	Franklin.
3	Bornish.....	
3	Springbank.....	
3	Crathie.....	
116.75	Strathroy	Queen's.

SOL
Lea
(gravel)
shore t
ally fir
Bend.
(impas
south-e
tourist
route f
crooked

MILEAGE

5.5

2.5

7.5

6.5

6.5

3

4

5.5

3.5

Eas
to Par
sand a
Grand
bank to
hills.

SOUTHAMPTON TO STRATHROY—Continued.

Leave Southampton by the Saugeen road (good gravel), continuing south over fair gravel along lake shore to Goderich, thence still south over exceptionally fine gravel to the immense sand hills at Grand Bend. Here turn inland over roads mostly clay (impassable after rain) and crooked, to Parkhill, thence south-east, still over clay roads, to Strathroy. The tourist should make inquiries of natives regarding route from Grand Bend to Strathroy as road is very crooked.

Woodstock to Guelph.

MILEAGE.	TOWNS.	HOTELS.
	Woodstock	Commercial.
	Eastwood	Cornish's.
5.5	Gobles	
2.5	Princeton	
7.5 20.5	Paris	Arlington.
6.5	Glen Morris	
6.5 33.5	Galt	Baker.
3	Preston	N. American.
4	Hespeler	Commercial.
5.5	Gourock.....	
3.5 49.5	Guelph	Royal.

East on Dundas street and Governor's road, direct to Paris, most of the road excellent gravel, a little sand and one or two hills, thence by west bank of Grand river to Glen Morris, crossing and taking east bank to Galt, road somewhat rough, sand with some hills. From Galt fair gravel road leads to Guelph.

Port Stanley to Walkerton.

MILEAGE.	TOWNS.	HOTELS.
	Port Stanley	Fraser.
3	Union	
6	St. Thomas	Grand Central
4	Talbotville	
2.5	Tempo	
5	Lambeth	
8 28.5	London	Grigg.
3.5	Masonville	
2	St. John's (Arva)....	Brook's.
5.25	Birr.....	
3.25 42.5	Elginfield ..	
3	Lucan.. ..	O'Neil.
3	Clandeboyne	
3	Adare.....	
2	Centralia.....	
4 57.5	Exeter	Commercial.
6	Hensall	Hodgins.
3	Kippen.....	
3.5	Brucefield	Dixon's.
6.5 76.5	Clinton	Rattenbury's.
6.25	Londesboro	Bell's.
4	Blythe	
6.5	Belgrave	
5 98.25	Wingham	Brunswick.
4	Glenannan.....	
5	Teeswater	Commercial.
5	Cheviot	

PO
MILEAGE
3.75
7
Th
road i
all go
and th
MILEAGE
5
3.75
2.25
3.25
2.25
7
5
6.5
6.5
8
Go
south t
Lynn's
east fro
gravel
sandy
Simcoe
Brown
gravel,
accoun
from B
romant

ton.

PORT STANLEY TO WALKERTON.—*Continued.*HOTELS.
Fraser.

Grand Central

MILEAGE.	TOWNS.	HOTELS.
3.75	Greenock.....	
7 123.	Walkerton	Hartley.

This road is almost a straight line and is the main road in the various counties through which it passes, all good gravel with some very fine, only a few hills and they are not heavy.

Woodstock to Port Dover.

Grigg.

Brook's.

O'Neil.

Commercial.
Hodgins.

Dixon's.

Rattenbury's.
Bell's.

Brunswick.

Commercial.

MILEAGE.	TOWNS.	HOTELS.
	Woodstock	Commercial.
5	Currie's	
3.75	Holbrook	
2.25	Burgessville	
3.25	Lynn's Corners	
2.25 16.5	Norwich	Brown's.
7	Kelvin	
5	Scotland	
6.5	Round Plains	
6.5	Simcoe	Battersby.
8 49.5	Port Dover	Orchard Beach.

Go east on Dundas street to Brewery, thence south to Currie's Crossing, thence east and south to Lynn's and east to Norwich, all good gravel; continue east from Norwich on county line to Scotland, good gravel; thence direct south to Simcoe, the roads being sandy and heavy to Round Plains, from which to Simcoe is fair gravel. From Simcoe proceed south to Brown's hotel, four miles good gravel, then sand and gravel, fair riding east to Port Dover. No hills of any account. By continuing south two miles and east one from Brown's hotel over fair gravel, Port Ryerse, a romantic little spot, is reached.

Petersburg to Simcoe.

MILEAGE.		TOWNS.	HOTELS.
		Petersburg	Wuerschmidt.
5.5		New Dundee	
4		Roseville	
4.5	14	Ayr	Hilborn.
8		Paris	Arlington.
7.5	29 5	Brantford	Kerby.
5		Mohawk	
4		Oaklands	
6.5	45	Waterford	Teeter's.
3.5		Bloomsbury	
4.5	53	Simcoe	Battersby.

South-east over good gravel road—quite hilly about Ayr—to Brantford. Leaving Brantford take Mount Pleasant road, a little gravel and then heavy sand to Waterford, from which point a fine gravel road runs to Simcoe.

Stratford to Woodstock.

MILEAGE.		TOWNS.	HOTELS.
		Stratford	Albion.
7.5		Shakespeare	
3		Tavistock	Jung's.
7.5		Strathallan	Lappen's.
7	25	Woodstock	Commercial.

From Stratford proceed east to Shakespeare and south to Tavistock, jog west then direct south to Woodstock. Beautiful gravel road, with a few hills near Woodstock.

Sarnia to Chatham.

HOTELS.	MILEAGE.	TOWNS.	HOTELS.
uerschmidt.		Sarnia	Belchamber.
	7	Corunna	
	5	Courtright	Bedard.
ilborn.	6	Sombra	Whitely.
lington.	5	Port Lambton	International.
erby.	10	Wallaceburg	Hills.
	5	Oldfield	
	5	Oungah	
eeter's.	7	Chatham	Garner.

Proceed direct south from Sarnia, over fine level clay and sand road on the river's edge, to Port Lambton, thence over clay road south and east to Wallaceburg. From Wallaceburg take Baldoon clay road direct into Chatham.

Stratford to Goderich.

HOTELS.	MILEAGE.	TOWNS.	HOTELS.
		Stratford	Albion.
	4	Sebringville	
	8.5	Mitchell	Hicks'.
lbion.	5	Dublin	
ing's.	6.25	Seaforth (a)	Queen's.
uppen's.	8	Clinton	Rattenbury's.
ommercial.	4	Holmesville	
kespeare and	9	Goderich	Albion.
ect south to	44.25	(a) Left hand—South.	
a few hills		Seaforth	Queen's.
		Egmondville	

STRATFORD TO GODERICH—*Continued.*

M. LEAGE.	TOWNS.	HOTELS.
6	Brucefield	Dixon.
4	Varna.....	
6	Bayfield	
12 29	Goderich	Albion.

Proceed due west from Stratford Postoffice, along Hamilton and Goderich road. Before entering Mitchell is a rather high hill from the top of which Stratford can be seen. At Seaforth alternate routes are offered; the road from Bayfield to Goderich on the Brucefield route has been called the "Wheelman's Paradise." Beware of coasting some of the hills, unless the foot of the hill can be plainly seen from the top.

Ingersoll to Exeter.

MILEAGE.	TOWNS.	HOTELS.
	Ingersoll	Atlantic.
6	Thamesford	McCartney's.
5.5	Kintore.....	
3.5	Medina.....	
7 22	St. Mary's	Windsor.
3	McIntyre's Corners	
8	Kirkton.....	
4.76	Winchelsea	
1.25	Elmville.....	
5 44	Exeter	Commercial.

Thamesford gravel road north-west to that village then Nissouri gravel road to county line, thence two miles east and two north to St. Mary's; only a few hills and none bad. From St. Mary's west to McIntyre's Corners, thence north-west and west to Exeter all good gravel.

MILEAGE

5

7

4

4

4

4

4

3

9

8

3

6

8

2.5

8

3.5

6

2

10

Le
roads
point t
by not
At Ho
over r
gravel
road a

Toronto to Gravenhurst.

MILEAGE.	TOWNS.	HOTELS.
	Toronto	Walker.
5	Eglinton.....	Oulcott's.
7	Thornhill.....	Steele's.
4	Richmond Hill.....	
4	Bond's Lake.....	
4 24	Aurora.....	Lemon's.
4	Newmarket	Forsyth.
4	Holland Landing.....	Sheppard's.
3	Bradford.....	Bingham.
9	Churchill	
8	Painswick	
3 55	Barrie	Queen's.
6	Shanty Bay.....	
8	Hawkestone.....	
2.5	E. Oro.....	
8 79.5	Orillia	Orillia House.
3.5	Ardrea	
6	Washago.....	
2	Severn Bridge.....	Robinson's.
10 101	Gravenhurst	La Frena.

Leave Toronto *via* Yonge street, over good gravel roads (better after rain), to Thornhill, from which point to Holland Landing the (two miles may be saved by not entering Newmarket) roads are much finer. At Holland Landing turn off Yonge street to the west over rough macadam to Bradford, then over good gravel (with some sand) into Barrie. The hills on this road are numerous, but all rideable, the worst being

TORONTO TO GRAVENHURST—*Continued.*

near Toronto. At Oak Ridges, between Bond Lake and Aurora is the height of land between the waters of Lakes Erie and Simcoe.

From Barrie take the Ridge road along the shore of Lake Simcoe, good gravel as far as Hawkestone, thence over sand roads into Orillia. Leave Orillia by the Muskoka road, which is rather poor and sandy most of the way, though there is a fair stretch between Ardtrea and Severn Bridge.

St. Thomas to Forest.

MILEAGE.	TOWNS.	HOTELS.
	St. Thomas..	Grand Central
4	Talbotville.....	
2.5	Tempo	
5	Lambeth.....	
6	Delaware.....	Jarvis.
4.5	Mt. Brydges.....	Hodgins.
7.5 29.5	Strathroy.....	Queen's.
7	Adelaide	
5	Keyser.....	
5	Arkona.....	
9.5 56	Forest.....	Franklin.

Leave St. Thomas by North street on London gravel road to Lambeth, thence west to Delaware and N. W. to Strathroy, thence north 3 miles to London and Sarnia road, and west 2 miles beyond Adelaide, north to Keyser, thence to Forest. Good gravel all the way and no hills of consequence.

MILEAGE

3

9

5

5

3

3.5

3.5

2.5

5

7

8.5

6

5

4

3

4

6

3

6

9

4

9

North
and nor
very fir
north, l
Palm
gravel.

Guelph to Southampton.

MILEAGE.		TOWNS.	HOTELS.
		Guelph	Royal.
3		Marden	Burns.
9	12	Elora	Dalby.
5		Alma	Commercial.
5		Parker	
3		Eosworth	
3.5		Rothsay	
3.5	32	Teviotdale	
2.5		Cotswold	
5	39.5	Harriston	Collison.
7		Clifford	Henry's
8.5		Mildmay	
6	61	Walkerton	Hartley.
5		Dunkeld	
4		Eden Grove	
3		Ellengowan	
4	77	Paisley	Paisley's.
6		Dumblane	
3		Burgoyne	
6	92	Port Elgin	American.
4	96	Southampton	Teahan's

North-west to Paisley, then north to Walkerton and north to Southampton; gravel all the way, mostly very fine. Numerous hills, particularly towards the north, but not serious enough to make hard riding.

Palmerston is $4\frac{1}{2}$ miles west of Teviotdale—good gravel.

Stratford to Listowel.

MILEAGE.	TOWNS.	HOTELS.
	Stratford	Commercial.
5.5	Gadshill	
4.5	Topping	
2.5	Poole	
3.75 16.25	Milverton	
6.5	Donegal	
2.5	Hammond	
1.25	Britton	
5.5 32	Listowel	Queen's.

This road is mostly clay, with some gravel, and is essentially a "dry weather road." A little "corduroy" and a small hill or two do not in any way damage the route.

Orangeville to Listowel.

MILEAGE.	TOWNS.	HOTELS.
	Orangeville	Paisley.
10	Waldemar	
12 22	Arthur	Queen's.
6	Parker	
5 33	Drayton	Royal.
8.5	Dorking	
5	Tralee	
7 53.5	Listowel	Queen's

Proceed direct west on town line to Arthur ; fair gravel, with a few hills, thence to Drayton ; mostly clay, then gravel, with a little clay to Listowel.

London to Chatham.

MILEAGE.	TOWNS.	HOTELS.
	London	Grigg.
8	Lambeth	
6	Delaware	Jarvis.
4.5	Christina	
4.5	Melbourne	Robb.
3	Mayfair	
6	Strathburn	
6	Wardsville.....	
4	Cashmere	
10	Thamesville	Union.
6	Kentbridge.....	
4	Louisville.....	
5.5	Chatham	Garner.

Leave London by Richmond street and York street bridge to Lambeth, thence south-west to Chatham. The road is first-class gravel to Wardsville, from that to Thamesville sandy and rough, then good clay to Chatham.

Fingal to Port Burwell.

	Fingal	McCall's
7	Port Stanley	Fraser.
4	Dexter	
5	Port Bruce	
2	Copenhagen	
2.5	Gravesend	
7.5 28	Port Burwell	

FINGAL TO PORT BURWELL.—*Continued.*

South $1\frac{1}{4}$ miles, thence east to Port Stanley over good gravel, then east on Lake Shore road; gravel and sand to Port Burwell. Fair riding and fine scenery.

Guelph to Collingwood.

MILEAGE.	TOWNS.	HOTELS.
	Guelph	Royal.
5.5	Eramosa	
4	Everton	
2.5	Ospringle	
4	16 Brisbane	
4.5	Hillsburg	
4.5	Reading	
4	29 Orangeville	Paisley
6	Camilla	
9.5	44.5 Shelburne	Royal.
6.5	Horning's Mills	
6	Maple Valley	
7	64 Singhampton	
5	Duntroon	Black's.
3	Nottawa	
5	77 Collingwood	Grand Central.

North-east from Guelph to Brisbane, thence north to Reading and N.E. to Orangeville over fine gravel roads. From Orangeville to Duntroon rough and hilly roads of clay, sand and gravel, thence fair gravel to Collingwood; fine scenery and fair wheeling in dry weather.

Erin is $2\frac{1}{2}$ miles east of Brisbane.

MILEAGE.

7.5

5

3.75

3.75

7

3.75

2.5

5

5.5

5

5.5

4.75

8.5

7.5

5

3

5

For
2 mile
thence
north
is goo
heavy
of the

Kincardine to Collingwood.

continued.

Stanley over
road ; gravel
ing and fine

HOTELS.
oyal.

Paisley

oyal.

Black's.

Grand Central.
thence north
ver fine gravel
n rough and
nce fair gravel
heeling in dry

MILEAGE.	TOWNS.	HOTELS.
	Kincardine	Royal.
7.5	Bervie	
5	Kinloss	
3.75	Riversdale	
3.75	Greenock.....	
7 27	Walkerton	Hartley.
3.75	Maple Hill.....	
2.5	Hanover	Reid.
5	Allan Park.....	
5.5 43.75	Durham	Middaugh.
5	Bunessan	
5.5	Priceville.....	Commercial.
4.75 59	Flesherton	Flesherton.
8.5	Maxwell.....	Commercial.
7.5 75	Singhampton	
5	Duntroon	Black's.
3	Nottawa	
5 88	Collingwood	Grand Central.

Follow Durham road east to Greenock, thence east 2 miles, north $1\frac{1}{4}$ miles and east to Singhampton, thence east $2\frac{1}{2}$ miles to Hurontario Street and direct north to Collingwood. The greater part of this road is good gravel with some hills east of Walkerton and heavy ones east of Singhampton. The general grade of the road is down hill towards Lake Huron.

Waterloo to Listowel.

MILEAGE.	TOWNS.	HOTELS.
	Waterloo	Zimmerman.
7.5	Heidelberg	
1.75	St. Clements	
4.5	Crosshill	
4.5	Linwood	
3.5	Macton	
3.75	Dorking	
5	Tralee	
7 37.5	Listowel	Queen's

North-west four miles, thence to Crosshill, from which point proceed west one concession, then north to Macton and north-west to Listowel. Good gravel to Crosshill, thence clay to Macton and gravel to Listowel—one or two hills.

Goderich to Wingham.

MILEAGE.	TOWNS.	HOTELS.
	Goderich	Albion.
6	Carlow	McDonagh's.
4.5	Auburn	
6.25	Blythe	
6.5	Belgrave	Queen's.
5 28.25	Wingham	Brunswick.

North from Goderich and east to Carlow, thence east to Blythe and north again to Wingham, all good gravel with a few small hills.

MILEAGE.

9
4.5
7.5 21
3
7.5
2.5
4
3
2 43

Direct
still sou
places ro
small hil

MILEAGE.

6.5
2.5
6.25
1.25 16

From
thence v
mile, all

Orangeville to Berlin

HOTELS.	MILEAGE.	TOWNS.	HOTELS.
erman.		Orangeville	Paisley.
	9	Reading	
	4.5	Craigsholme.....	
	7.5 21	Fergus	Commercial.
	3	Elora	Dalby.
	7.5	W. Montrose.....	
	2.5	Winterbourne	
	4	Bloomington.....	
	3	Bridgeport	
	2 43	Berlin	Walper.

n's
hill, from
hen north
ood gravel
gravel to

Direct south-west ; good gravel to Fergus, thence still south-west over roads only fair gravel—some places rough and stony—to Berlin, quite a number of small hills—beautiful scenery.

Mitchell to Exeter.

HOTELS.	MILEAGE.	TOWNS.	HOTELS.
on.		Mitchell	Hicks.
onagh's.	6.5	Russelldale	
	2.5	Farquhar	
	6.25	Hay	
n's.	1.25 16.5	Exeter	Commercial.
iswick.			

ow, thence
n, all good

From Mitchell proceed south-west to Russelldale, thence *via* Thames road west to Hay and south one mile, all good gravel.

Hespeler to Drayton.

MILEAGE.		TOWNS.	HOTELS.
		Hespeler	Commercial.
5.5		Freeport	
4.5	10	Berlin	Walper.
2		Waterloo	Zimmerman.
5		St. Jacobs	
5	22	Elmira	O'Donnell.
7		Creekbank	
3		Goldstone	
4	36	Drayton	Royal.

From Hespeler proceed west over sandy road thence north and north-east over good gravel to Creekbank, and north-west over clay and gravel to Drayton. Some hills but easily rideable.

Ingersoll to Port Burwell.

MILEAGE.		TOWNS.	HOTELS.
		Ingersoll	Atlantic.
4		Salford	
3.5		Mount Elgin	
4		Ostrander	
2.5	14	Tilsonburg	Queen's.
3.5		Acacia	
1.5		Eden	
3.5		Staffordville	
5		Vienna	
2.5	30	Port Burwell	

Good gravel road to Tilsonburg, from which point there is considerable drifting sand, but sidepaths are frequent and good; few hills.

MILEAGE.

9.5

8.5

11.5 2

7

3.5

3.5

2 4

Sout
fair sand
cession,
Sables r
thence t
route.

MILEAGE

7

1.75

5.5

4

5 23

2.25

2.25

6.25

3.5

Ailsa Craig to Wyoming.

HOTELS.	MILEAGE.	TOWNS.	HOTELS.
Commercial.		Ailsa Craig	Queen's.
	9.5	Parkhill	Franklin.
alper.	8.5	Thedford	
mmerman.	11.5 29.5	Forest	Franklin.
	7	Uttoxeter	
Donnell.	3.5	Kertch	
	3.5	Reede's Corners	
oyal.	2 45.5	Wyoming	Commercial.

sandy road
od gravel to
nd gravel to

South one concession and direct west to Parkhill, fair sand and gravel, thence west and north one concession, sandy to Thedford, being very bad at Aux Sables river. From Thedford to Forest, fine gravel; thence to Kertch, clay, with gravel the balance of the route.

ll.

Brantford to Aylmer.

HOTELS.	MILEAGE.	TOWNS.	HOTELS.
lantic.		Brantford	Kerby.
	7	Mount Vernon	
reen's.	1.75	Burford	Barnea.
	5.5	Harley	
	4	New Durham	
	5 23.25	Norwich	Brown's.
	2.25	Lyne's Corners	
	2.25	Newark	
which point idepaths are	6.25	Mount Elgin	
	3.5	Verchoyle	

BRANTFORD TO AYLMER—Continued.

MILEAGE.	TOWNS.	HOTELS.
3.5	Culloden	
2	Brownsville	
6	Springfield	
2.5	Glencolin	
3.5 55	Aylmer	Brown.

Take Brantford and Woodstock gravel road to a point $1\frac{1}{2}$ miles west of Burford, then turn south-west following road to Norwich, nearly all good gravel. Leave Norwich by Main street going direct west to Verchoyle, then south to Brownsville, good and fair gravel. Proceed two miles south from Brownsville then west to Springfield, very poor sand; thence to Aylmer, heavy sand, clay and gravel, some parts unrideable.

Hamilton to Stratford.

MILEAGE.	TOWNS.	HOTELS.
	Hamilton	Royal.
5	Dundas	Collin's.
3.25	W. Flamboro	
6	Rockton	
3.75	Sheffield	
6 24	Galt	Baker.
3	Preston	N. American.
3.5	Freeport	
4.5 35	Berlin	Walper.
7	Petersburg	
3	Baden	Baden.

H
MILEAGE,

4
6.5
7.5 6

Leave
main roa
town un
west to
road to I
but good
From Be
rolling gr

MILEAGE,

3 75
4 7.7

3
2
4
4
6.5 27.
2
10 39.2

South a
west to Lc
3½ miles
to Watfor

HAMILTON TO STRATFORD—Continued.

MILEAGE.	TOWNS.	HOTELS.
4	New Hamburg.....	Commercial.
6.5	Shakespeare	
7.5 63	Stratford	Commercial.

Leave Hamilton by King street west, following main road to Dundas, thence through Main street of town under G. T. R. tracks to Bullock's Corners and west to West Flamboro, turning north on Waterloo road to Berlin. The road thus far is somewhat hilly but good gravel and macadam—splendid scenery. From Berlin to Stratford is very fine gravel, with a rolling grade.

Clandeboye to Watford.

MILEAGE.	TOWNS.	HOTELS.
	Clandeboye	
3 75	Maple Grove	
4 7.75	Ailsa Craig	Queen's.
3	Nairn	
2	Bowood	
4	Fernhill	
4	Amiens	
6.5 27.25	Strathroy	Queen's.
2	Napperton	
10 39.25	Watford	Dominion.

South and west to Ailsa Craig and thence south and west to London and Sarnia road at Amiens, then west 3½ miles and south to Strathroy. Then direct west to Watford ; fairly good gravel nearly all the way.

Listowel to Kincardine.

MILEAGE.	TOWNS.	HOTELS.	MILEAGE.
	Listowel	Arlington.	
7	Molesworth		4
6	Morrisbank		2
4	Bluevale		2.5
4 21	Wingham	Brunswick.	2.5 11
12	Lucknow	Cain.	7
6.5	Lochalsh		3
5	Amberley	Knifer's.	3.5
4.5	Pine River		6.5
7 56	Kincardine	Royal.	7 38

Proceed directly north-west on Main street and town line over fairly good gravel road—sandy between Wingham and Bluevale—thence again west over county line, rough, stony and somewhat hilly, with some clay, to Amberley, and north on Saugeen road.

Alymer to Port Burwell.

MILEAGE.	TOWNS.	HOTELS.	MILEAGE.
	Aylmer	Brown.	
6.5	Mt. Salem		6
2.5	Gravesend		2
7.5 16.5	Port Burwell		3.5

South four miles, then east two and one-half miles, and south two and one-half miles, on good gravel, to Gravesend, then along Lake road, sand and gravel, to Port Burwell.

Fine gr
clay road
heavy sand
Simcoe; b

6
2
3.5
4 15.5

St. Thomas to Jarvis.

HOTELS.	MILEAGE.	TOWNS.	HOTELS.
ington.		St. Thomas	Grand Central.
	4	Yarmouth Centre	
	2	New Sarum.....	
	2.5	Orwell	
aswick.	2.5 II	Aylmer	Brown.
t.	7	Bayham.....	
fer's.	3	Staffordville	
	3.5	Guysboro	
al.	6.5	Courtland	
street and	7 38	Delhi	Stoddard.
dy between	3	Atherton	
west over	7 48	Simcoe	Battersby.
hilly, with	4.5	Renton.....	
green road.	5.5 58	Jarvis	Commercial.

Fine gravel road (Talbot street) to Bayham, thence clay road to Guysboro, with good gravel to Delhi and heavy sand thence to Atherton and poor gravel to Simcoe ; blue clay to Jarvis, excellent in dry weather.

HOTELS.
own.

Harriston to St. Mary's.

HOTELS.	MILEAGE.	TOWNS.	HOTELS.
	6	Harriston	Collison.
	2	Palmerston	Zilliaux.
	3.5	Bryden	
	4	Gowanstown	
	15.5	Listowel	Arlington.

e-half miles,
d gravel, to
and gravel,

HARRISTON TO ST. MARY'S—Continued.

MILEAGE.	TOWNS.	HOTELS.
6	Newry (Atwood).....	
5.5	W. Monkton.....	
5.5	Bornholm.....	
5 37.5	Mitchell.....	Hicks.
8.5	Sebringville.....	
4	Avonton.....	
7 57.5	St. Mary's.....	Windsor.

Direct south from Harriston, then proceed west $1\frac{1}{2}$ miles from Palmerston, thence south-west to Listowel. Then south-west to Mitchell, jogging with the road at Listowel and Monkton. From Mitchell go east on Goderich road to Sebringville and south on Downie and Blanchard road to St. Mary's. The whole route is first-class gravel with few hills.

Goderich to Kinloss.

MILEAGE.	TOWNS.	HOTELS.
6	Goderich.....	Albion.
	Carlow.....	McDonagh's.
2.5	Nile.....	
3.5	Dungannon.....	
5	Belfast.....	
3.5 20.5	Lucknow.....	Cain.
4	Holyrood.....	
2	Kinlough.....	
2 28.5	Kinloss.....	

Leave Goderich by Lake Shore road north for $2\frac{1}{2}$ miles, thence east to Carlow and north-east to Kinloss, from which point the Durham road leads east to Walkerton or west to Kincardine. The roads are all fair gravel and no heavy hills.

MILEAGE.

6

5

4

4

8

4

8

8

4

8

From

road to

Middle

point th

Windsor

Chathan

weather.

tinue so

Cross, fiv

is interse

MILEAGE.

6

3

3

Chatham to Windsor.

MILEAGE.		TOWNS.	HOTELS.
		Chatham	Garner.
		Charing Cross	Walker's.
6		Buxton	
5		Merlin	
4		East Tilbury	
4		Trudell	
8		Comber	Commercial.
4	31	Woodslee	
8		Maidstone	
8		Oldcastle	
4		Windsor	Crawford.
8	59		

From Chatham proceed direct south over gravel road to Charing Cross, then follow the Edgeware and Middle clay roads direct to Maidstone, from which point the famous Talbot gravel road leads into Windsor. This is the most direct route between Chatham and Windsor, and is only rideable in fine weather. A longer and much better route is to continue south, over sand and gravel road, from Charing Cross, five miles, to Buckhorn, where the Talbot road is intersected.

Walkerton to Seaforth.

MILEAGE.		TOWNS.	HOTELS.
		Walkerton	Hartley.
6		Formosa	
3		Ambleside	
3		Belmore	

WALKERTON TO SEAFORTH—*Continued.*

MILEAGE.	TOWNS.	HOTELS.
6.25	Wroxeter	
4.5	Morrisbank	
1.25	Jamestown	
5 29	Brussels	American.
6	Walton's	
2.5	Leadbury	
2.5	Winthrop	
5 45	Seaforth	Queen's.

Take Durham road west to town line, thence due south over fair gravel and stone to Brussels and south-west to Seaforth, the latter part of the road much improving.

Around Essex.

MILEAGE.	TOWNS.	HOTELS.
	Belle River	
2.5	Patillo	
2.5	Pike's Creek	
3	Tecumseh	
7	Walkerville	
2 17	Windsor	Crawford.
2	Sandwich	Stuart's.
2	Chappel	Chappel's.
8	Canard River	
5	Gordon	
1 37	Amherstburg	Lake View.

MILEAGE.

7

5

9

8

60

From
and sand
Windsor
and grave
to Kingsv
ington.

MILEAGE.

5

5

3

9

7

6

6

41

Proceed
miles ar
side of Rive
ood to Pe
Dawn Cen
lay and sa

AROUND ESSEX—Continued.

MILEAGE.	TOWNS.	HOTELS.
7	Vereker	
5	Harrow	
9	Kingsville.....	Mettawas.
8	66 Leamington	Scott's.

From Belle River to Pike's Creek the road is rough and sandy, thence to Windsor fair gravel. From Windsor take the river road, which is poor sand, clay and gravel, but has some nice sidepaths. Amherstburg to Kingsville mostly clay, thence good gravel to Leamington.

Wyoming to Wallaceburg.

MILEAGE.	TOWNS.	HOTELS.
	Wyoming.....	Commercial.
5	Petrolia.....	Tecumseh.
5	Oil City	
3	Oil Springs	Cameron.
9	Dawn Centre (Rutherford)	
7	Dresden.....	Westcott.
6	Keith	
6	41 Wallaceburg	Hill's.

Proceed direct south to Dawn Centre, thence west miles and south to Dresden, then west on north side of River Sydenham to Wallaceburg. Gravel and good to Petrolia, then clay to Dawn Centre; from Dawn Centre roads improve and are built of gravel, clay and sand.

Sarnia to Oil Springs.

MILEAGE.	TOWNS.	HOTELS.
	Sarnia	Belchamber.
16	Petrolia	Tecumseh.
5	Oil City	
3 24	Oil Springs	Cameron.

Take the "Plank Road" south-east from Sarnia for $8\frac{1}{2}$ miles, thence east on 10th concession to Petrolia and south over county road to Oil Springs. Gravel to Petrolia and clay the balance; no hills.

Hamilton to Port Dover.

MILEAGE.	TOWNS.	HOTELS.
	Hamilton	Royal.
4	Ryckman's Corners.	
3.5	Mt. Hope (Glanford)	
3	N. Seneca	
3 13.5	Caledonia	Leach's.
4	Willow Grove	
3.5	Oneida	
2	Hagersville	Lawson's.
3	Garnet	
3	Jarvis	Commercial.
9 38	Port Dover	Orchard Beach.

Leave Hamilton by James street south, thence on electric R.R. to mountain's brow and easterly to Mountain View hotel and south-west to Port Dover. Stone road to Caledonia and stone, gravel and clay to Port Dover. Returning, enter Hamilton *via* John street. Do not on any account coast the mountain.

MILEAGE.

6
5
3.5
1.5 16
9
7 32
9
4
5.5 50.
8
1
8
3 70.
3
5
5 83.
5.5
10
5
5 109

Good g
with sever
leaving O
block and
which foll
consequen
Blue Mou
other. Fr
deal of cla
stretches
tially a dr

Port Elgin to Barrie.

	MILEAGE.	TOWNS.	HOTELS.
	6	Port Elgin	American.
		Burgoyne	
	5	Arkwright	
	3.5	Invermay	
	1.5 16	Tara	Queen's.
	9	Kilsyth	
	7 32	Owen Sound	Paterson.
	9	Woodford	Lemon's.
	4	Bayview	Hartford.
	5.5 50.5	Meaford	Paul.
	8	Thornbury	Rever.
	1	Clarksburg	Globe.
	8	Craigfeigh	
	3 70.5	Collingwood	Grand Central.
	3	Nottawa	
	5	Duntroon	Black's.
	5 83.5	Stayner	Queen's.
	5.5	Sunnidale	
	10	Minnesing	
	5	Midhurst	
	5 109	Barrie	Queen's.

Good gravel roads from Port Elgin to Owen Sound, with several turns and only a couple of hills. On leaving Owen Sound take Bay street, thence north a block and east on Meaford gravel road to the bay shore, which follow to Collingwood. There are no hills of consequence and the view is very fine, showing the Blue Mountains on one side and Georgian Bay on the other. From Collingwood the roads consist of a good deal of clay but are very fine riding. There are some stretches of gravel, but this part of the road is essentially a dry weather route.

Sarnia to Watford.

MILEAGE.	TOWNS.	HOTELS.
	Sarnia	Belchamber.
9	Mandamin	
6	Wyoming	Commercial.
3.5	Wanstead	
9 27.5	Watford	Deminion.

South-east on plank road one mile, thence direct east over 4th line to Watford. Good gravel and no hills.

Owen Sound to Port Elgin.

(SECOND ROUTE.)

MILEAGE.	TOWNS.	HOTELS.
	Owen Sound	Paterson.
6	Jackson	Johnson's.
6	Allenford	McCarroll's.
3	Elsinore	
5	Chippawa Hill	
2	Southampton	Teahan's.
4 26	Port Elgin	American.

Leave Owen Sound by Christie's Hill, going direct west to Chippawa Hill, thence south to Port Elgin. Good gravel with some hills for the first ten miles, then only one or two small ones. Fine scenery.

MILEAGE.

4
7.5
3.5
2.5
3.5
6.5
4.5
5

Leav
Orchard
Lemonv
Stouffvil
sand an
Stouffvil
south-ea:

MILEAGE.

4
2.5
7
2.5
5.5
5

13

21.

Newmarket to Port Perry.

	MILEAGE.	TOWNS.	HOTELS.
		Newmarket	Forsyth.
elchamber.	4	Pine Orchard	
	7.5	Lemonville	
ommerical.	3.5	Ringwood	Button's.
ominion.	2.5 17.5	Stouffville	Mansion.
	3.5	Goodwood	
hence direct	6.5 27.5	Uxbridge	Queen's.
ravel and no	4.5	Epsom	
	5 37	Port Perry	Oriental.

Leave Newmarket east by Gorham street to Pine Orchard, thence south 5 miles and east $2\frac{1}{2}$ miles to Lemonville; south again $2\frac{1}{4}$ miles and direct east to Stouffville. Road mostly gravel, a few hills, a little sand and some clay. From Stouffville follow the Stouffville gravel road north-east to Uxbridge, then south-east to Port Perry—few hills.

HOTELS.
 Paterson.
 Johnson's.
 McCarroll's.

Newmarket to Orillia.

(VIA BEAVERTON.)

	MILEAGE.	TOWNS.	HOTELS.
		Newmarket	Forsyth.
Feahan's.	4	Sharon	
American.	2.5	Queensville	
	7 13.5	Keswick and Roche's Pt. .	
going direct	2.5	Belhaven	
Port Elgin	5.5 21.5	Sutton and Jackson's Pt.	Mansion.
it ten miles.	5	Virginia	
enery.			

NEWMARKET TO ORILLIA—Continued.

MILEAGE.	TOWNS.	HOTELS.
11.5 38	Beaverton	Hamilton.
6	Gambridge	
3.5	Brechin	Oberend's.
9	Uptergrove	
3	Atherley	Gaudaur's.
2.5 62	Orillia	Orillia.

Leave Newmarket by Huron street east to first concession, thence north to Keswick, nearly all good gravel with a couple of sandy hills, thence east and north over first-class gravel to Beaverton. From Beaverton follow Centre road to Orillia, one sand hill and a little corduroy, all the rest good.

Roche's Point is three miles north-east of Keswick and **Jackson's Point** two miles north of Sutton, both pleasant summer resorts.

Toronto to Sutton.

(VIA MARKHAM.)

MILEAGE.	TOWNS.	HOTELS.
	Toronto	Walker.
4	Norway	Warren's.
7	Woburn	
2.5	Malvern	
3	Armadale	
2.5 19	Markham	Franklin.
6	Ringwood	Button's.
5	Ballantrae	
3	Vivian	

MILEAGE.

4 3
7
5
6 5.

Proc
miles to
to Mark
after wh
improve
Markham
mile, th
Albert, 1
north 1½

MILEAGE.

4.5
6
3
2.5
2
1
2.5
6.5 2
4.5
10.5
5 4
6
9.5

TORONTO TO SUTTON—Continued.

MILEAGE.	TOWNS.	HOTELS.
4 37	Mt. Albert.....	
7	Zephyr	Shepard's.
5	Ravenshoe Station.....	
6 55	Sutton and Jackson's Pt.	Mansion.

Proceed east on Kingston road (good gravel) nine miles to Markham road, thence north over poor road to Markham; continue over fine gravel to Ballantrae, after which some poor sand for two miles, then road improves and continues good to Sutton. Turn east off Markham road $1\frac{1}{4}$ miles, north of Vivian for half mile, thence north to first concession north of Mt. Albert, east $\frac{1}{2}$ mile, north $1\frac{1}{4}$ miles, east $2\frac{1}{2}$ and north $1\frac{1}{4}$ to Zephyr.

Toronto to Kingston.

MILEAGE.	TOWNS.	HOTELS.
4.5	Toronto	Walker.
6	Norway	Warren's.
3	Scarboro	
2.5	Highland Creek.....	Kellar's.
2	Rouge	
1	Dunbarton	
2.5	Liverpool Market.....	Secker's.
6.5	Pickering	Gordon.
4.5	Whitby	Royal.
10.5	Oshawa	Queen's.
5	Bowmanville	Bennett.
6	Newcastle	Royal.
9.5	Newtonville.....	
	Welcome.....	

TORONTO TO KINGSTON—*Continued.*

MILEAGE.	TOWNS.	HOTELS.	MILEAGE
3.25 66.75	Port Hope	Queen's.	
8	Cobourg	Dunham.	
9	Grafton		12
3	Wicklow		6
5.5	Colborne	Brunswick.	9
9 101.25	Brighton	Central.	9
11.5	Trenton	Grand Central.	8
11 123.75	Belleville	Queen's.	5 46
9	Shannonville		4.5
1.5	Milltown.....		7
3.5	Tyendenaga		8
9 146.75	Napanee	Paisley.	5.5 7.
13	Odessa	Queen's.	7.25
6	Westbrook.....		9
4	Cataraqui		2.5
3 172.75	Kingston	British American.	4.25 5
			5.5 107
			4.5
			6.5
			6
			8
			9 140
			8
			10
			3
			7

Leave Toronto by Queen street to the Woodbine race track, there turning north-east on Kingston road—good gravel though hilly—to Whitby, some clay at Duntroon and sand hill east of Pickering. From Whitby continue over fair gravel (with some sand), to Bowmanville. Several of the hills between Toronto and Bowmanville are steep and crooked and should not be coasted. Take right fork of road 4 miles east of Bowmanville. Good roads thence to Colborne, and very fine roads, with only one or two short stretches of middling roads, straight into Kingston—all gravel and macadam.

Kingston to Montreal.

MILEAGE.	TOWNS.	HOTELS.
	Kingston	Brit. American.
12	Pitt's Ferry	
6	Gananoque	International.
9	Lansdowne	
9	Mallorytown	
8	Lyn	
5 49	Brockville	Grand Central
4.5	Maitland	
7	Prescott	Daniel's.
8	Cardinal	
5.5 74	Iroquois	
7.25	Morrisburg	Windsor.
9	Aultsville	
2.5	Farran's Point	
4.25	Dickinson's Landing	Ryan's.
5	Milles Roches	
5.5 107.5	Cornwall	Rossmore.
4.5	Glen Walter	
6.5	Summerstown	
6	Lancaster	McRae's.
8	Curry's Hill	
9 140.5	Coteau	
8	St. Dominique	Trottier.
10	Vaudreuil	Serre.
3	St. Anne's	Charlebois.
7	Pointe Claire	Duchesnea

KINGSTON TO MONTREAL—Continued.

MILEAGE.	TOWNS.	HOTELS.	MILEAGE
2.5	Valois.....		3
2.5	Dorval.....		7
2.5	Lachine.....	Harvey.	2
9 185	Montreal	Balmoral.	10 4

Leave Kingston by Ontario street to the barracks, crossing the long bridge and following the river road, fair macadam to Gananoque; thence east over good road for three miles, then only fair to Lyn, and fine into Brockville. From Brockville follow the River road which is very fine riding and presents beautiful scenery to Dickinson's Landing, where take the canal bank to Cornwall. Leave Cornwall by Water street to Montreal road to Vaudreuil. This road as far as Summerstown is heavy and low and is somewhat unridable after rain, thence on to Curry's the roads are somewhat better, but all of clay, then fair sand to Coteau, gravel to Cedars and rough clay to Vaudreuil. Cross the Ottawa to St. Anne's by railway bridge, from which place to Pointe Claire, road is rough, then perfect gravel and macadam to Montreal.

Montreal to Ottawa.

MILEAGE.	TOWNS.	HOTELS.
	Montreal	Balmoral.
9	Lachine.....	Harvey.
2.5	Dorval.....	
2.5	Valois.....	
2.5	Pointe Claire.....	Duchesneau.
7 23.5	Ste. Anne's.....	Charlebois.

Follo
over fine
St. Anne
to Vaud
roads ar
to Point
Hawkes
L'Orign
to Alfred
the river
the road
The who
three hil

MONTREAL TO OTTAWA—Continued.

HOTELS.	MILEAGE.	TOWNS.	HOTELS.
	3	Vaudreuil	Serre.
	7	Como	
	2	Hudson	Mrs. Amsbury
	10 45.5	Rigaud	Chevrier.
	9	Point Fortune.....	Seguin.
	14	Hawkesbury	McManus.
	5 73.5	L'Orignal	St. Denis.
	2	Cassburn.....	
	9	Alfred	Roileau.
	6	Plantagenet	Wilson.
	7 97.5	Wendover.....	Rouleau.
	6.25	Clarence.	
	3.5	Rockland	Langevin.
	6.25	Cumberland.....	Windsor.
	6	St. Joseph.....	Lauzon.
	9 128.5	Ottawa	Russell.

Follow St. Antoine street to Lachine road, thence over fine macadamized road to Pointe Claire and to St. Anne's (rough road), cross river on railroad bridge to Vaudreuil, from which point to Rigaud the clay roads are fair only in dry weather. From Rigaud to Pointe Fortune is good, then sandy and rough to Hawkesbury at the head of the Long Sault rapids. At L'Orignal leave the river, taking a rather rough road to Alfred and thence to Plantagenet, coming again to the river at Wendover, from which point to Ottawa the roads are good, with some very fine stretches. The whole route is undulating, there only being two or three hills of any consequence.

HOTELS.
moral.
ey.

esneau.
lebois.

Pickering to Sutton.

MILEAGE.	TOWNS.	HOTELS.
	Pickering	Gordon's.
5	Brougham	
4	Claremont	
13	Sandford	
6	Zephyr	Shepard's.
5	Ravenshoe Station	
6	39 Sutton and Jackson's Pt.	Mansion.

Take Brock road north to Claremont, then jog west taking fourth concession for 15 miles, turn to third concession $3\frac{3}{4}$ miles north of Sandfield, then north to Zephyr and north again $2\frac{1}{2}$ miles, west $2\frac{1}{2}$ miles and north to Sutton—nearly all fair gravel with some clay and sand—rather hilly in some parts.

Oshawa to Sutton.

MILEAGE.	TOWNS.	HOTELS.
	Oshawa	Queen's.
6	Columbus	
2.5	Raglan	
6.5	15 Port Perry	Oriental.
5	Epsom	
4.5	24.5 Uxbridge	Queen's.
6	Victoria Corners	
6	Vallentyne	

MILEAGE.

5
1.5
4
5 52
Take
Port Per
Brock ro
Sutton o
road betv
Sund
—two go

MILEAGE.

5
4
1.5
8 18.
5.5
5.5
8 37.
6
5
14 62.
8
5

OSHAWA TO SUTTON—Continued.

MILEAGE.	TOWNS.	HOTELS.
5	Wilfrid	
1.5	Pefferlaw	
4	Virginia	
5 52	Sutton	Mansion.

Take Reach road (gravel and some clay) north to Port Perry, thence west to Uxbridge and north on Brock road to Wilfrid; here turn west and north to Sutton over good gravel road. Some hills and rough road between Uxbridge and Wilfrid.

Sunderland is four miles south-east of Vallentyne—two good hotels.

Sutton to Belleville.

MILEAGE.	TOWNS.	HOTELS.
	Sutton	Mansion.
5	Virginia	
4	Pefferlaw	
1.5	Wilfrid	
8 18.5	Cannington	Queen's.
5.5	Manilla	
5.5	Oakwood	
8 37.5	Lindsay	Benson.
6	Reaford	
5	Omeme	Bradburn.
14 62.5	Peterboro'	Grand Central.
8	Indian River	
5	South Dummer	

SUTTON TO BELLEVILLE—Continued.

MILEAGE.		TOWNS.	HOTELS.
5	81.5	Norwood.....	Brennan.
6		Hastings.....	Clarendon.
11	97.5	Campbellford.....	Windsor.
6		Burnbrae.....	
3		Menie.....	
3		Brinkworth.....	
6		Stirling.....	Stirling.
7.5		Foxboro'.....	
6	129	Belleville.....	Queen's.

First-class gravel road east to Cannington and south to Manilla—no hills, thence very heavy hills, but fine gravel through Omemee. Nearing Peterboro' roads not so good, then poor roads, clay and gravel, to Norwood, with better to Campbellford and only fair to Stirling—some hills. From Stirling to Belleville good gravel road.

Bowmanville to Port Perry.

MILEAGE.		TOWNS.	HOTELS.
		Bowmanville.....	Bennett.
5		Hampton.....	Beer's.
4		Enniskillen.....	
4		Burkton.....	
3		Blackstock.....	Royal.
8	24	Port Perry.....	Oriental.

Follow Scugog street to forks of road—taking left thence straight north to Blackstock. Here turn west to Lake Scugog, crossing bridge to Scugog island and thence west to Port Perry. Fairly good gravel with short stretch of sand—only one hill.

MILEAGE.

10.5

22.5

2.5

6

4

2.5

7 55

From
north a ha
train to I
north-east
to St. Tho
taking tra
around Cl
the route a
ordinary.
may contin
64 miles to
route.

MILEAGE.

4

2

Blenheim to St. Thomas. (SECOND ROUTE.)

MILEAGE.	TOWNS.	HOTELS.
	Blenheim	Sheldon.
10.5	Ridgetown	Arlington.
22.5	Dutton	
2.5	Wallacetown	Ontario.
6	Iona	
4	Shedden	
2.5	Fingal	McCall's.
7 55	St. Thomas	Grand Central.

From Blenheim proceed east one mile, thence north a half mile and east to Ridgetown; here take train to Dutton, thence south to Wallacetown and north-east to Shedden, again south to Fingal and east to St. Thomas. This road is all fine gravel, and by taking train from Ridgetown to Dutton the sands around Clearville are escaped. No hills. This was the route always chosen in the days of the solid-tired ordinary. Tourists not wishing to enter St. Thomas, may continue over fine gravel north-east from Shedden $6\frac{1}{2}$ miles to Talbotville, on the Hamilton to Windsor route.

St. Thomas to Simcoe. (SECOND ROUTE.)

MILEAGE.	TOWNS.	HOTELS.
	St. Thomas	Grand Central.
4	Yarmouth Centre	
2	New Sarum	

ST. THOMAS TO SIMCOE—Continued.

MILEAGE.		TOWNS.	HOTELS
2.5		Orwell.....	
2.5	II	Aylmer.....	Brown.
6		Springfield.....	
10	27	Tilsonburg.....	Queens.
5.5		Courtland.....	
7		Delhi.....	
3		Atherton.....	
7	49.5	Simcoe.....	Battersby.

East on Talbot street to Aylmer—good gravel with a couple of hills—then north $3\frac{1}{2}$ miles to town line and east $5\frac{1}{2}$ miles, north on town line 100 yards and east to Tilsonburg (this road being poorly kept is only recommended in extremely dry weather), thence south-east over fair gravel to Delhi, striking Talbot road at Courtland. Between Delhi and Atherton is heavy sand, then good gravel to Simcoe.

Port Dover to Buffalo.

MILEAGE.		TOWNS.	HOTELS.
		Port Dover.....	Orchard Beach.
7		Nanticoke.....	
7.5		Selkirk.....	
5		Rainham Centre.....	
6.5		S. Cayuga.....	
7	33	Dunnville.....	Mansion.
13.5		Marshville.....	
7.5	54	Humberstone.....	
6		Sherkstone.....	

MILEAGE

5

7

1

4

7

Lake
east *via*
road to
to Hum
midsum
road eas
again to
Wella

MILEAGE.

8

5

3

1

2.5

2.5 21

6

4

5

6 43

4

9 56

PORT DOVER TO BUFFALO—Continued.

MILEAGE.	TOWNS.	HOTELS.
5	Ridgeway	
7	Fort Erie	
1	International Bridge.....	
4 77	Buffalo	Tift.

Lake shore road east to Rainham Centre, thence east *via* Rainham road to Dunnville, then by Forks road to Marshville and south one concession and east to Humberstone—clay the whole distance but fine in midsummer. From Humberstone is a fine gravel road east to Ridgeway, jogging north 2 miles, then east again to Fort Erie and Buffalo.

Welland is 8 miles north-east of Marshville.

Port Dover to Niagara Falls.

MILEAGE.	TOWNS.	HOTELS.
	Port Dover	Orchard Beach.
8	Jarvis	Commercial.
5	Erie.....	
3	Balmoral.....	
1	Nelles' Corners.....	
2.5	Decewsville	
2.5 21	Cayuga	Campbell.
6	Canfield	
4	Canboro	
5	Attercliffe	
6 43	Wellandport.....	
4	Candasville.....	
9 56	Welland	Fraser.

PORT DOVER TO NIAGARA FALLS—Continued.

MILEAGE.	TOWNS.	HOTELS.
3	Crowland.....	
8	Chippewa	
3	Falls of Niagara.....	Parkside Inn.
2 72	Niagara Falls	American.

Leave Port Dover north-east over Hamilton stage road to Jarvis, thence east over Talbot road, jogging N.E. at Balmoral to Attercliffe. From Attercliffe follow river road, north bank, to Welland (the road on south bank of river from Wellandport is sometimes better), thence east to Crowland, from which point follow river road again to Chippewa, thence north over gravel road and through Queen Victoria Park to the Falls. Road is all clay or clay-loam, except last four or five miles, but in midsummer is excellent riding. There are no hills of consequence.

Fort Erie to Niagara.

MILEAGE.	TOWNS.	HOTELS.
	Fort Erie	
1	International Bridge.....	
7	Stevensville.....	
1	New Germany.....	
6	Chippewa	
3 18	Falls of Niagara.....	Parkside Inn.
2	Niagara Falls.....	American.
3	St. Davids	
3.5	Queenston.....	
6.5 33	Niagara	Long's.

North from Fort Erie to International Bridge and west to Stevensville—all good gravel, thence north to Chippewa—gravel and clay loam, thence north through Niagara Falls Park and along river to Niagara Falls town, north and west to St. Davids, then north-east to Queenston and along the river to Niagara.

MILEAGE

7
6 1
6
3
1.5 2
4.5
4
1.5
2.5 36
East
port, 1½
Canboro
Canal to
with san

MILEAGE.

4
2
1.5
3
3 13
5
1.5
4.5
15 39.
Leave
mountain
and clay t
River to C
riding in

Continued.

HOTELS.

kside Inn.
erican.
nilton stage
ad, jogging
Attercliffe
d (the road
sometimes
which point
e north over
Park to the
pt. last four
lent riding.

Dunnville to St. Catharines.

MILEAGE.	TOWNS.	HOTELS.
	Dunnville	Mansion.
7	Attercliffe	
6 13	Wellandport	
6	Fenwick	
3	Ridgeville	
1.5 23.5	Fonthill	
4.5	Allanburg	
4	Thorold	Welland.
1.5	Merritton	
2.5 36	St. Catharines	Grand Central.

East on Robinson road to Attercliffe and Wellandport, $1\frac{1}{2}$ miles beyond which branch north-east on Canboro road to Allanburg and north along Welland Canal to St. Catharines—roads clay and clay loam with sand around Fonthill.

Hamilton to Dunnville.

MILEAGE.	TOWNS.	HOTELS.
	Hamilton	Royal.
4	Ryckman's Corners	
2	N. Glanford	
1.5	Mt. Hope (Glanford)	Dominion.
3	N. Seneca	
3 13.5	Caledonia	Leach's.
5	York	
1.5	Mt. Healey	
4.5	Cayuga	Campbell-
15 39.5	Dunnville	Mansion.

Leave Hamilton *via* James street to the top of mountain and take Port Dover stone road to Mt. Hope and clay to Caledonia, thence on east bank of Grand River to Cayuga. Road from Caledonia all clay—fair riding in fine weather, but some parts are quite hilly.

HOTELS.

kside Inn.
erican.

g's.
Bridge and
e north to
ice north
to Niagara
hen north-
agara.

Dunnville to Grimsby.

MILEAGE.	TOWNS.	HOTELS.
	Dunnville.	Mansion.
7.5	Canboro'	
3.5	Warner	
7	Smithville	Adkins.
6 24	Grimsby.	Mansion.

Take Dunnville road north and north-east to Canboro', thence *via* Smithville road to Smithville—one mile heavy sand, balance good clay—no hills. This road is very crooked and tourists should frequently make enquiries. From Smithville take main road north-west two miles, thence due north to Grimsby—a fairly good road but with some stony places. *Walk* down the mountain into Grimsby.

Port Dalhousie to Port Colborne.

MILEAGE.	TOWNS.	HOTELS.
	Port Dalhousie.	
4	St. Catharines.	Grand Central.
2.5	Merritton.	
1.5	Thorold.	Welland.
4	Allanburg	
2.5	Port Robinson.	
4	Welland.	Fraser.
7	Humberstone.	
1 26.5	Port Colborne.	O'Neill's.

Take bank of new canal to St. Catharines—clay—then stone road to Thorold, then south along clay road to Humberstone, then gravel to Port Colborne—heavy grade between St. Catharines and Thorold.

A bet
wish to :
St. Paul
near G.1
Falls, th
Welland.

MILEAGE.

5
2
3.5
4
1.25
1.25
2.5 19.

Leave
avenue, th
one mile l
follow roa
entering U
Danforth
2 miles, th
then good

St. Catharines to Welland.

A better route than the preceding (if one does not wish to see the numerous locks on the canal) is to take St. Paul street west from St. Catharines to top of hill near G.T.R. station, turning south-east past Decew's Falls, then jog west half mile and direct south to Welland. Distance 12 miles.

Toronto to Markham.

(SECOND ROUTE.)

MILEAGE.	TOWNS.	HOTELS.
	Toronto	Walker.
5	East Toronto.....	
2	Danforth.....	
3.5	Ellesmere.....	
4	Milliken.....	
1.25	Hagerman's Corners.....	
1.25	Unionville.....	
2.5 19.5	Markham	Franklin.

Leave Toronto by Gerrard street to Jones avenue, thence north to Danforth avenue and east to one mile beyond East Toronto; here turn to left and follow road to Unionville; turn east just before entering Unionville. Roads are good—pavements to Danforth avenue, then sand (with good side paths) 2 miles, then gravel, after which clay roads for 4 miles, then good gravel to Markham—no hills.

Toronto to Weston and Return.

MILEAGE.	TOWNS.	HOTELS.
	Toronto	Walker.
5	Dovercourt	
1	Carlton	
4	Weston	Eagle.
2.5	Lambton Mills	Scott's.
2.5	The Humber	Duck's.
5.5 20.5	Toronto	

Bloor street west to St. Clarens avenue, thence north and west to Carlton and north-west on Weston road to Weston. Good pavement to Carlton, then poor macadam—one hill.

Returning, cross bridge at Weston and take road on west side of river, re-crossing river before reaching Lambton, then cross river and climb hill at this point, taking first through road south to lake shore road turning east into Toronto. Fair roads and good side paths—all down hill from Weston.

Toronto to King.

MILEAGE.	TOWNS.	HOTELS.
	Toronto	Walker.
5.5	Fairbank	
7.5	Concord	
2.5	Carrville	

MILEAGE.

2.5

.5 23

Bloor
port road
St. Clair
Carrville
clay. Fr
into King
Richm
Ridges 4

MILEAGE.

5

4

5

2 16

7

2.5

6

5.5

10 47

Take V
Port Perr
county lin
gravel road
Cameron
wheeling.

TORONTO TO KING—Continued.

MILEAGE.	TOWNS.	HOTELS.
2.5	Maple.....	
5 23	King	

Bloor street west and St. George street to Davenport road—asphalt; thence west to Bathurst, north to St. Clair avenue, north-west to Fairbank and north to Carrville, jogging east $6\frac{1}{4}$ miles north of Fairbank—clay. From Carrville $1\frac{1}{4}$ miles west and then north into King—all gravel.

Richmond Hill is 4 miles east of Maple and **Oak Ridges** 4 miles east of King—good gravel.

Whitby to Beaverton.

MILEAGE.	TOWNS.	HOTELS.
	Whitby	Royal.
5	Brooklin	
4	Myrtle	
5	Manchester	
2 16	Port Perry	Oriental.
7	Seagrave	
2.5	Sonya	
6	Manilla ..	
5.5	Cannington	Queen's.
10 47	Beaverton	Hamilton.

Take Whitby and Port Perry gravel road north to Port Perry, thence by Simcoe street north-east to county line at Seagrave; continue north over hilly gravel road to Cannington, thence north-west over Cameron gravel road to Beaverton. All good wheeling.

Aurora to Schomberg.

MILEAGE.	TOWNS.	HOTELS.
	Aurora	Lemon's.
5	Kettleby.....	
4	Pottageville.....	
4	Lloydton.....	
1 14	Schomberg	

Proceed up Yonge street to first cross-road, thence west three concessions and north half a mile to Kettleby, thence west to Lloydton and north to Schomberg—fair clay loam and some sand, a few hills at Pottageville.

Lindsay to Peterboro'.

(VIA BOBCAYGEON.)

MILEAGE.	TOWNS.	HOTELS.
	Lindsay	Benson.
10	Dunsford.....	
12 22	Bobcaygeon.....	Read.
12	Ennismore	
9 43	Peterboro'	Grand Central.

Take Verulam road, clay and gravel, north and east to Bobcaygeon, thence south along county line to bridge at Pigeon Lake and east to Ennismore, thence south-east across Chemong Lake and over good gravel road to Peterboro'. A pleasant excursion may be taken by steamer from Bobcaygeon to Chemong Park, 5 miles from Peterboro'.

MILEAGE.

4.5
3.5
7.5
3.5
6.5 25.
4
6.5
6 42

Good g
sandy in
and gravel
small hills.

MILEAGE.

3.25
2
4
2
7
3.5
1.75
3
6 32.5

Leave I
Welcome,
north 3½
Good grav

Newcastle to Lindsay.

HOTELS.
on's.

MILEAGE.

TOWNS.

HOTELS.

		Newcastle	Royal.
4.5		Orono.....	N. American.
3.5		Kirby	
7.5		Pontypool	
3.5		Ballyduff.....	
6.5	25.5	Bethany.....	Hamilton's.
4		Fleetwood.....	
6.5		Reaboro'	
6	42	Lindsay	Benson.

oad, thence
a mile to
l north to
a few hills

Good gravel road to Orono, then road is somewhat sandy in places, but rideable to Bethany, then clay and gravel to Reaboro' and gravel to Lindsay—a few small hills.

Port Hope to Omemee.

HOTELS.
son.

MILEAGE.

TOWNS.

HOTELS.

		Port Hope	Queen's.
3.25		Welcome	
2		Canton	
4		Perrytown.....	
2		Garden Hill	
7		Millbrook	Queen's.
3.5		Cavanville.....	
1.75		Ida	
3		Mount Pleasant	
6	32.5	Omemee	Bradburn.

l.

d Central.

north and
nty line to
re, thence
ood gravel
1 may be
long Park,

Leave Port Hope by Kingston road north-west to Welcome, thence north to Mount Pleasant; continue north $3\frac{1}{2}$ miles, thence west $2\frac{1}{2}$ miles to Omemee. Good gravel and clay road, with few hills.

Port Hope to Peterboro'.

MILEAGE.	TOWNS.	HOTELS.
	Port Hope	Queen's.
2	Dale	
4.5	Rossmount	
4	Bewdley	
4	Baillieboro'	
2.5	S. Monaghan (Centreville)	
6.5	Fraserville	
3	Springville	
7.5 34	Peterboro'	Grand Central.

North from Port Hope over fair gravel road to Springville, thence north-east to Peterboro'—a few hills.

Millbrook is five miles west of South Monaghan.

Peterboro' to Young's Point.

MILEAGE.	TOWNS.	HOTELS.
	Peterboro'	Oriental.
9	Lakefield.	Munroe.
5 14	Young's Point	Kearney.

Follow George street north along the west side of Otonabee river to Lakefield, thence to Young's Point, good gravel road.

Pleasant excursions are to be had from Young's Point on the lakes.

MILEAGE.

5
10 15
Fair g
poor to R
with the c
Harwood.

MILEAGE.

7.5
3
2.5 13
North f
a mile, nor
and follow
Fair gravel
There is

MILEAGE.

5
11

Cobourg to Harwood.

MILEAGE.	TOWNS.	HOTELS.
	Cobourg	Dunham.
5	Baltimore	Pickering's.
10 15	Harwood	

Fair gravel road to Baltimore, then sandy and poor to Rice Lake at Norwood—road runs parallel with the old railway. There is a summer hotel at Harwood.

Cobourg to Gore's Landing.

MILEAGE.	TOWNS.	HOTELS.
	Cobourg	Dunham.
7.5	Cold Springs	
3	Plainville	
2.5 13	Gore's Landing	

North from Cobourg four miles, then jog west half a mile, north two miles to fork ; take right hand road and follow it north-east and north to Gore's Landing. Fair gravel with a mile or two of sand—no hills.

There is a summer hotel at Gore's Landing.

Cobourg to Hastings.

MILEAGE.	TOWNS.	HOTELS.
	Cobourg	Dunham.
5	Baltimore	Pickering's.
11	Fenella	

COBOURG TO HASTINGS—Continued.

MILEAGE.	TOWNS.	HOTELS.
4	Roseneath.....	Edington.
11 31	Hastings	Clarendon.

Division street north and north-east to Baltimore—good gravel—then north-east to Hastings—considerable sand after leaving Baltimore—no hills of consequence and rain rather improves the going.

Colborne to Hastings.

MILEAGE.	TOWNS.	HOTELS.
	Colborne	Brunswick.
7	Castleton	
6	Morganston	
4	Norham	
1	Warkworth.....	Daly.
6	Brickley	
5 29	Hastings	Clarendon.

North to Castleton, thence east to Morganston and east 2 miles and north to Hastings—good gravel, rather uphill.

Brighton to Campbellford.

MILEAGE.	TOWNS.	HOTELS.
	Brighton	Central.
4.5	Hilton	
3.5	Newcombe's Mills	
2.5	Codrington	
4	Mallory's Corners	

BRIG

MILEAGE.
3.5
6 24

Follow
thence no
and clay
Campbell

MILEAGE.

5
6
1
3
4
2.5
5.5
3
6 36

Good
from Has
south to
Trenton—

BRIGHTON TO CAMPBELLFORD—Continued.

HOTELS.	MILEAGE.	TOWNS.	HOTELS.
ngton.	3.5	Meyersburg	
rendon.	6 24	Campbellford	Windsor.

Baltimore
gs—consid-
lls of conse-

Follow the road north-west and north to Hilton, thence north and north-east to Campbellford—gravel and clay to Meyersburg, thence good gravel to Campbellford, a little uphill.

HOTELS.
nswick.

Hastings to Trenton.

HOTELS.	MILEAGE.	TOWNS.	HOTELS.
7.		Hastings	Clarendon.
	5	Brickley	
endon.	6	Warkworth	Daly.
anston and	1	Norham	
od gravel,	3	Mallory's Corners	
	4	Codrington	
	2.5	Newcombe's Mills	
	5.5	Wooler	
	3	Rosa	
HOTELS. ral.	6 36	Trenton	Grand Central.

Good gravel the whole distance. Proceed south from Hastings to Norham, thence east 3 miles and south to Newcombe's Mills, east and south-east to Trenton—down grade all the way.

Newcombe Mills to Belleville.

MILEAGE.	TOWNS.	HOTELS.
	Newcombe Mills	
5.5	Wooler.....	
5.5	Stockdale.....	
2 13	Frankford	Clarke.
5	Wallbridge.....	
4	Foxboro'.....	
6 28	Belleville	Queen's.

From Newcombe Mills follow the road east to Wooler, thence north-east to Stockdale and east to Foxboro', thence south to Belleville—all good, fair gravel.

Trenton is 8 miles south of Frankford. All down hill along the river and good gravel.

Trenton to Picton.

MILEAGE.	TOWNS.	HOTELS.
	Trenton	Grand Central.
6	Carrying Place.....	
5	Consecon	Porter's.
5	Hillier	
5	Wellington	Garrett.
6	Bloomfield.....	
5 32	Picton	Royal.

A simple direction is to follow the telegraph line the whole distance. The route leads along Bay Quinte shore to Carrying Place and then along the lake shore to Wellington—good gravel roads and pretty scenery. A little rain improves this road.

Brighton is ten miles west of Carrying Place.

Picton

MILEAGE.

5

Take M
bridge and
to hill, then

MILEAGE.

3.5

6.5 10

Follow
south-west
row's Corn
road on no

MILEAGE.

8

8

8 24

Follow
which proc
—good gra
thence roug

Picton to Lake on the Mountain.

MILEAGE.	TOWNS.	HOTELS.
	Picton	Royal.
5	Glenora (Lake on the Mt.)	Glen House.

Take Main street east to Bridge Street Hill, cross bridge and turn to left continuing due east $1\frac{1}{2}$ miles to hill, then follow telegraph line—good gravel.

Picton to Sandbanks.

MILEAGE.	TOWNS.	HOTELS.
	Picton	Royal.
3.5	Woodrow's Corners	
6.5 10	Sandbanks	Lake Shore House.

Follow Main street west to East Lake road, thence south-west following telegraph line $3\frac{1}{2}$ miles to Woodrow's Corners. Here turn to right over good gravel road on north side of East Lake.

Picton to Napanee.

MILEAGE.	TOWNS.	HOTELS.
	Picton	Royal.
8	Green Point	
8	Deseronto	O'Connor.
8 24	Napanee	Paisley.

Follow Main street east to Bay Shore road, along which proceed to Peterson's Ferry opposite Deseronto—good gravel and clay. Take ferry to Deseronto, thence rough and stony road east to Napanee.

Picton to Salmon Point.

MILEAGE.		TOWNS.	HOTELS.
		Picton	Royal.
5		Cherry Valley	
7	12	Salmon Point	

Main street west to East Lake road and follow telegraph line to Cherry Valley, thence west on south shore of East Lake—good gravel.

Millford is 4 miles east of Cherry Valley or 7 miles south of Picton.

Picton to Kingston.

MILEAGE.		TOWNS.	HOTELS.
		Picton	Royal.
5		Glenora (Lake on the Mt.)	Glen.
1		Young's Point	
2.5		Adolphustown	
3.5		Conway	
3.5		Sandhurst	
5.5	21	Bath	Bay View.
2		Mill Haven	
6.5		Collin's Bay	
6	35.5	Kingston	Br. American.

Lake road and beautiful scenery all the way. Roads clay and gravel with some sand—fine in dry weather. A horse ferry connects the Lake on the Mountain and Young's Point.

MILEAGE.

5

2

2

6

7

22

North-e
straight no
the whole o

MILEAGE.

3

6

4

4

6.5

3.5 27

Good gr
Harrowsmit
west to Cam

Napanee to Tamworth.

HOTELS.

MILEAGE.	TOWNS.	HOTELS.
	Napanee	Paisley.
5	Napanee Mills.....	
2	Newburg.....	Hope's.
2	Camden East	McCarthy's.
6	Centreville.....	
7 22	Tamworth	

d follow
on south
r 7 miles

North-east from Napanee to Camden East, then straight north to Tamworth. Excellent gravel roads the whole distance.

HOTELS.

Kingston to Camden East.

MILEAGE.	TOWNS.	HOTELS
	Kingston	Br. American.
3	Catarqui	
6	Glenville	
4	Murvale.....	
4	Harrowsmith.....	
6.5	Yarker	
3.5 27	Camden East	McCarthy's.

iew.

merican.

he way.
e in dry
on the

Good gravel road north-west from Kingston to Harrowsmith—rather hilly for a few miles, thence west to Camden East—road improving.

Kingston to Sydenham and Inverary.

MILEAGE.	TOWNS.	HOTELS.
	Kingston	Br. American.
3	Cataraqui	
3.5	Elginburgh	
7.5 14	Sydenham	Union.

Take Princess street north-west to Cataraqui, thence north to Elginburgh and north-west to Sydenham. Good gravel but hilly—fine scenery.

Inverary is 6 miles north-east of Elginburgh over good gravel road.

Kingston to Battersea.

MILEAGE.	TOWNS.	HOTELS.
	Kingston	Br. American.
10.5	Sunbury	
6.5 17	Battersea	

Follow Montreal street to outer G.T.R. station, thence follow main road north-east to Battersea. Only fair gravel—some hills.

Inverary is 3 miles west of Sunbury.

Kingston to Ottawa.

MILEAGE.	TOWNS.	HOTELS.
	Kingston	Br. American.
1	Barriefield	
5	Kingston Mills	
7	Birmingham (Joyceville)	
2.5	Washburn	
2	Brewer's Mills	

MILEAGE.

6 23.

8

6

3

4

4

5.5

6

7 67

12

6

2

7 49

5.5

5

3.5

1.5

2.5

1 16.

Follow
bridge (R
the right).
Bay; the
north-east
north to R
east to R
sand; so
From R
Ottawa.

KINGSTON TO OTTAWA—Continued.

MILEAGE.	TOWNS.	HOTELS.
6	23.5	Seeley's Bay.....
8		Lyndhurst.....
6		Delta.....
3		Philipsville.....
4		Forfar.....
4		Portland.....
5.5		Granworth.....
6		Oliver's Ferry Coult's.
7	67	Perth Hicks.
12		Franktown Dominion.
6		Prospect.....
2		Dwyer Hill.....
7	49	Richmond Reilly's.
5.5		Fallowfield..... O'Meara's.
5		Bell's Corners Brown's.
3.5		Britannia Charles.
1.5		Birchtown..... Barnes.
2.5		Hintonburg.....
1	16.3	Ottawa Russell.

Follow Ontario street to barracks and cross Long bridge (Royal Military College and Fort Henry on the right). Turn left, following the Rideau to Seeley's Bay; then follow main gravelled road east and north-east through villages to Oliver's Ferry, thence north to Perth—hilly and stony—from which point east to Richmond is a dirt road with some clay and sand; some stretches of it, however, being excellent. From Richmond take Richmond macadam road to Ottawa.

Merrickville to Oliver's Ferry.

MILEAGE.	TOWNS.	HOTELS.
	Merrickville	
6	Montague	
6	Smith's Falls	Wardrope.
7	Lombardy	
4 23	Oliver's Ferry	

West and north-west to Smith's Falls—fair wheeling most of the way—thence south-west to Lombardy and north to Oliver's Ferry. Fair stage road—some-what sandy.

Lanark to Smith's Falls.

MILEAGE.	TOWNS.	HOTELS.
	Lanark	
5	Balderson	
5	Perth	Hicks.
6	Port Elmsley	
6 22	Smith's Falls	Wardrope.

Direct south from Lanark to Perth—fair clay road—thence south-east over rough clay and gravel road to Smith's Falls.

Ottawa to Brockville.

	Ottawa	Russell.
1	Hintonburg	
2.5	Birchtown	Barnes'.
1.5	Britannia	Charles.

MILEAGE.

3.5

5

5.5 19

9

6

8

4 46

7

5

2

6

3

4

4 77

Good n
then clay,
south to S
and south
wheeling—

MILEAGE.

3.5

8.5

8 20

5

OTTAWA TO BROCKVILLE—*Continued.*

HOTELS.	MILEAGE.	TOWNS.	HOTELS.
	3.5	Bell's Corners	Brown's.
	5	Fallowfield	O'Meara's.
ope.	5.5 19	Richmond.....	Reilly's.
	9	Prospect	
	6	Franktown	Dominion.
	8	Numogate ..	
r wheel- mbardy —some-	4 46	Smith's Falls	Wardrope.
	7	Newbliss	
	5	Toledo	
	2	Frankville.....	
	6	Addison	
	3	Glen Buell.....	
	4	Tincap.....	
	4 77	Brockville	Grand Central.

Good macadamized road south-west to Richmond, then clay, sandy and stony west to Franktown and south to Smith's Falls, thence south-west to Toledo and south to Brockville. Mostly macadam and good wheeling—no hills of consequence.

Ottawa to Prescott.

MILEAGE.	TOWNS.	HOTELS.
	Ottawa	Russell.
3.5	Billings' Bridge.....	
8.5	S. Gloucester	O'Connor's.
8 20	Metcalfe.....	York's.
5	Dawson.....	

OTTAWA TO PRESCOTT—Continued.

MILEAGE.	TOWNS.	HOTELS.
3	W. Osgoode	
12 40	Kemptville.	Burrill.
8	Christie's Corners.	
7	Spencerville.	
10 65	Prescott	Daniels.

Leave Ottawa by Bank street, south-east to Metcalf, thence west to Dawson and south $1\frac{1}{4}$ miles beyond W. Osgoode. Here turn west to road between railway and Rideau river, which follow to Kemptville, thence south-east to Prescott. Road macadam for 20 miles, then mostly clay with some rough, sandy and stony parts. Many nice foot-paths—a number of hills

Ottawa to North Gower.

MILEAGE.	TOWNS.	HOTELS.
	Ottawa	Russell.
1	Hintonburg.	
5	Merivale.	
8	Manotick.	McCarney's.
8	Carsonby.	
4 26	North Gower	Ferguson's.

Richmond road to Hintonburg, thence south to Manotick and south-west to North Gower—macadam to Merivale, clay and sand loam, somewhat rough beyond.

Ot

MILEAGE.

5.5

2.5

6 14

South-east
adam—to H
rideable in c

MILEAGE.

1

2.5

1.5

3.5

6.5

14.5 29.5

10

4.5 44

Richmon
branch west
west to Carl
lake to Lana
and clay loa

Ottawa to Eastman Springs.

MILEAGE.	TOWNS.	HOTELS
	Ottawa	Russell
5.5	Hawthorn.....	Graham's.
2.5	Ramsey's Corners.....	
6 14	Eastman Springs	Dominion.

South-east from Ottawa, follow main road—macadam—to Hawthorn, clay and sand the balance, only rideable in dry weather.

Ottawa to Lanark.

MILEAGE.	TOWNS.	HOTELS.
	Ottawa	Russell.
1	Hintonburg.....	
2.5	Birchtown	Barnes'.
1.5	Britannia	Charles'.
3.5	Bell's Corners	Brown's.
6.5	Stittsville.....	C.P.R. Restaurant.
14.5 29.5	Carleton Place.....	Mississippi.
10	Ferguson Falls.....	
4.5 44	Lanark	

Richmond macadam road to Bell's Corners; here branch west to Stittsville, thence north 2 miles and west to Carleton Place, thence west round Mississippi lake to Lanark. The road from Bell's Corners is sand and clay loam, somewhat stony in places.

Ottawa to Lake Constance.

MILEAGE.	TOWNS.	HOTELS.
	Ottawa	Russell.
1	Hintonburg	
2.5	Birchtown	Barnes'.
1.5	Britannia	Charles'.
8	South March	
6 19	Dunrobin	

Richmond gravel road to past 6th milestone, thence west over clay road to S. March and north-west over good dirt road to Dunrobin. Lake Constance is about 3 miles north of South March and a half mile east of road.

Ottawa to Maitland.

MILEAGE.	TOWNS.	HOTELS.
	Ottawa	Russell.
1	Hintonburg	
2.5	Birchtown	Barnes'.
1.5	Britannia	Charles'.
3.5	Bell's Corners	Brown's.
5	Fallowfield	O'Meara's.
5.5 19	Richmond	Reilley's.
7	North Gower	Ferguson's.
13.5	Burrit's Rapids	
5 44.5	Merrickville	
12	North Augusta	

OTT

MILEAGE.

6

5.5 68

Richmon
east to Nor
Rapids; wes
Road to Mer
team, thence
number of hi

Follow W
to Hull, takin
fine macadar

.25

OTTAWA TO MAITLAND—Continued.

MILEAGE.	TOWNS.	HOTELS.
6	Algonquin	
5.5 68	Maitland	

Richmond gravel road to Richmond, thence south-east to North Gower and south-west to Burritt's Rapids; west to Merrickville and south to Maitland. Road to Merrickville from Richmond is sand and clay loam, thence clay loam and gravel to Maitland—a number of hills and road only good in dry weather.

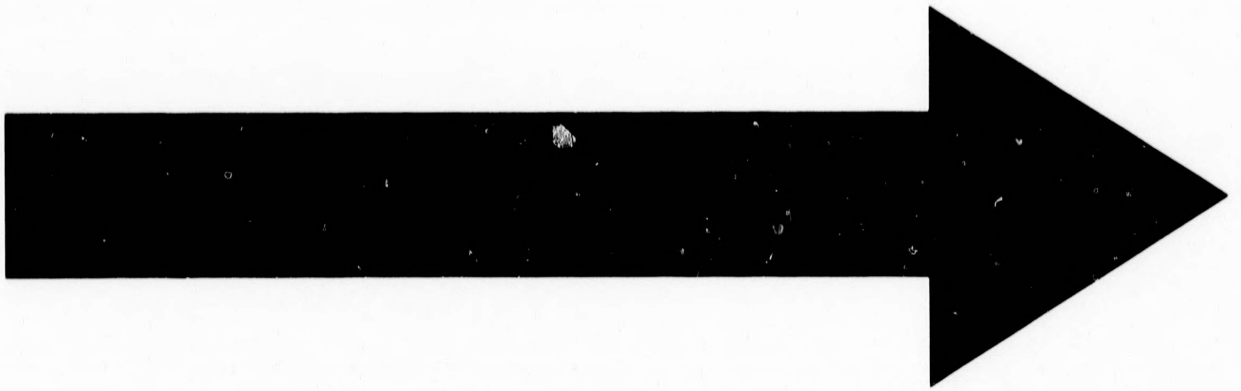
Ottawa to Aylmer, P. Q.

Ottawa	Russell.
Hull	
Bison's Hotel	
Dechene's Crossing	
9 Aylmer	Mrs. Ritchie's.

Follow Wellington to Bridge street, thence across Hull, taking first turn to left and follow the river fine macadam all the way—slightly up grade,

Ottawa to Templeton.

Ottawa	Russell.
Hull	
Ironsides	
Long Hill	



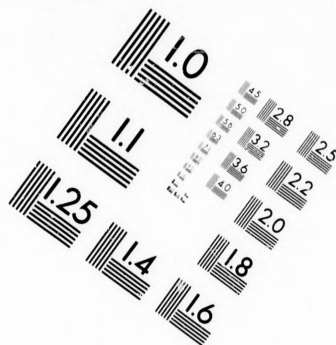
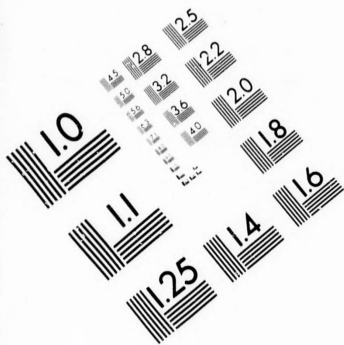
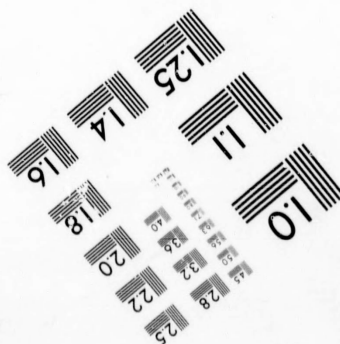
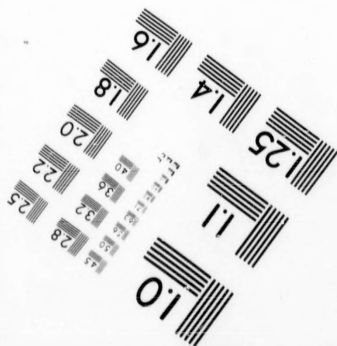
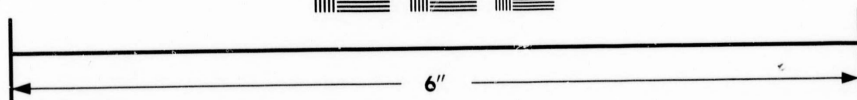
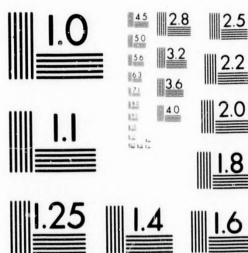


IMAGE EVALUATION TEST TARGET (MT-3)



Photographic
Sciences
Corporation

23 WEST MAIN STREET
WEBSTER, N.Y. 14580
(716) 872-4503

45
30 28
35 32 25
36 22
40 20
1.8

11
10
65 28

OTTAWA TO TEMPLETON—*Continued.*

MILEAGE.	TOWNS.	HOTELS.
2.75	Gatineau Point.....	
7 16	Templeton	

Enter Hull by Bridge street, turning to left past Eddy's factory, thence to right across Brigham's creek and on to Long Hill—splendid macadam. At foot of hill turn to right, crossing Gatineau river; sandy road to Templeton. Returning take ferry to South shore and wheel back by Montreal road.

Ottawa and the Upper Gatineau.

MILEAGE.	TOWNS.	HOTELS.
	Ottawa.....	Russell,
1	Hull	
5	Ironsides	
2	Chelsea	Moore's
5	Kirk's Ferry	
4	Cascades	
3	Piche	
4 24	North Wakefield	(2 hotels)

Cross river to Hull and thence to Chelsea, over good macadam, from which point is a good dirt road, several stiff hills.

Round the Island of Montreal.

MILEAGE.	TOWNS.	HOTELS.
	Montreal	Balmoral.
6	Blue Bonnets.....	
3	Lachine.....	Harvey's.

ROUND

MILEAGE.

2.5

2.5

2.5

1

6 23.5

21

6

4 54.5

15.5

8

2.5

4.5 85.

Leave

Beaconsf

macadam

west thro

rapid (or

composed

over clay

riding to

and poor

is the eas

south we

island.

MILEAGE.

2.5

tinued.

ROUND THE ISLAND OF MONTREAL—Continued.

HOTELS.	MILEAGE.	TOWNS.	HOTELS.
	2.5	Dorval.....	
	2.5	Valois	
	2.5	Pointe Claire	Duchesnes.
	1	Beaconsfield.....	
	6 23.5	St. Anne's	
	21	St. Genevieve.....	
	6	Bord da Plouffe.....	
	4 54.5	Sault au Recollet	
	15.5	Bout de L'Isle	
	8	Longue Pointe.....	
	2.5	Hochelaga	
	4.5 85.	Montreal	Balmoral.

Leave Montreal by Sherbrooke street west to Beaconsfield, on Upper Lachine Road—all good macadam, with fine view of lake St. Louis; thence west through St. Anne's, over clay road past the rapid (on the border of which Moore's song was composed) turning northerly, then north and east over clay road with some stony patches, only fair riding to Sault au Recollet; thence still east over good and poor road past the rapids to Bout de L'Isle, which is the east end of the island. Here turn west and south west into Montreal—a complete circle of the island.

Montreal to Terrebonne.

HOTELS.	MILEAGE.	TOWNS.	HOTELS.
	2.5	Montreal	Balmoral.
		Back River	

MONTREAL TO TERREBONNE—*Continued.*

MILEAGE.	TOWNS.	HOTELS.
4.5	Sault au Recollet	
4	St. Vincent de Paul.....	
4 15	Terrebonne	Hotel Boulevard.

Sherbrooke and Bleury streets, then north on main road to Sault au Recollet—good macadam. Cross river by toll bridge and east along the bank to Terrebonne, crossing another toll bridge on the way (fare 5c. on each bridge).

Montreal to Newport, Vt.

MILEAGE.	TOWNS.	HOTELS.
	Montreal	Balmoral.
3	Longueuil.....	
12 15	Chambly.....	
8	Marieville.....	
6	Rougemont	
4	St. Cesaire.....	
9	Abbotsford.....	
11 53	Granby	Windsor.
12	Waterloo	Canada.
12	Frost Village.....	
5	S. Stukely	
4	Eastman.....	
11 97	Magog	Park.
7	Ayer's Flats.....	Ayer's

MO

MILEAGE.

13 117

1

4

4 126

From

bly (fair

and for;

fair road

hence or

with fair

which cl

road to

highest p

fair ridi

Canada a

port, ne

general d

are on the

MILEAGE.

6

4

6

7 33

6

7

1 57

continued.

MONTREAL TO NEWPORT, VT.—*Continued.*

HOTELS.	MILEAGE.	TOWNS.	HOTELS.
	13 117	Stanstead	Stanstead.
	1	Derby Line	
	4	Derby Centre.....	
Boulevard.	4 126	Newport, Vermont ...	Memphremagog.

n north on
macadam.
ing the bank
dge on the

From Longueuil take old military road to Cham-
bly (fair wheeling only in mid-summer), then some
sand for a short distance and fine macadam to Granby;
fair road with one hill and some corduroy to Waterloo;
thence on old Frost village road over hilly country,
with fair roads and beautiful scenery to Magog, from
which clay and corduroy to Ayer's Flats, and good
road to Stanstead. Morrill's Hill on this road is the
highest point in the Eastern Townships; one hill and
fair riding to Derby Line—the boundary between
Canada and United States, and sand thence to New-
port, nearing which is good macadam. A good
general direction is to follow the telegraph lines, which
are on the shortest main routes.

t.

HOTELS.
moral.

Waterloo to Coaticook.

MILEAGE.	TOWNS.	HOTELS.
	Waterloo	Canada.
6	St. Anne de Stukley.....	
4	Lawrenceville	
6	Melbourne	
7 33	Richmond	
6	Windsor Mills	
7	Brampton Falls.....	
7 57	Sherbrooke.....	Magog.

rdisor.
ada.

s
s
s

WATERLOO TO COATICOOK—Continued.

MILEAGE.	TOWNS.	HOTELS.
3.5	Lennoxville	
6.5	Waterville	
5	Compton	
2	Hillhurst	
6 80	Coaticook	

Fair road, a little hilly to Lawrenceville, then fairly good to Richmond; some very heavy sand, but generally fair riding to Coaticook, though the road is quite hilly and in some places pretty rough. Tourists are particularly cautioned against coasting the hills, for though some are good most of the way, yet there are usually places in them which would wreck most machines.

From Montreal to Quebec (North Shore).

MILEAGE.	TOWNS.	HOTELS.
	Montreal.....	Balmoral.
4.5	Hochelaga.....	
3	Longue Pointe ..	
4	Point Aux Trembles	
5	Bout de L'Isle	
3	Repentigny	
1	L'Epiphanie	
4	Vauchuse ...	
6	Lavaltrie	
6	Lanoraie	
8	Berthier	
6	St. Cuthbert	

MILEAGE
5
7
5.5
8
8

10

2

11

8

.5

7

9

3

5

6

7

6

15

8

8

200

Start

Hochelaga

Pointe to

very good

limits of

Repentigny

clay road

through

FROM MONTREAL TO QUEBEC—Continued.

MILEAGE.	TOWNS.	HOTELS.
5	St. Barthelemi	
7	MasKinonge	
5.5	Louiseville.....	
8	Yamachiche	
8	Point du Lac	
10	Three Rivers	
2	Piles Branch.....	
11	Champlain	
8	Batiscau.....	
5	Batiscau (Ferry)	
7	St. Anne de la Parade ...	
9	Grondines	
3	Lachevrotiere.....	
5	Deschambault	
6	Portneuf.....	
7	St. Bazile.....	
6	Pont Rouge	
15	Belair	
8	Lorette	
8	200 Quebec.....Frontenac.	

Starting from Montreal post office, pass through Hochelaga, Maisonneuve, Cote Visitation and Longue Pointe to the end of the island (Bout des Lisle) with very good macadamized roads, these being within the limits of the regular city drives. Then ferry to Repentigny and clay roads to St. Sulpice, with fair clay roads intermingled with long grass; then passing through St. Felix, St. Joseph, St. Gabriel, which are

FROM MONTREAL TO QUEBEC—*Continued.*

only a few miles apart, meeting sandy roads towards Lanoraie, where walking is the only alternative, for acres of sand can be seen on all sides, but getting better towards Berthier.

Clay roads will be found to St. Cuthbert and heavy clay roads to Maskinonge, and lumpy with deep dust to Yamachiche, inclining to sand towards Point du Lac. Good walking to Three Rivers on account of the sand mixed with long grass; and where wheeling can be taken in it would be best to take the wagon-wheel track. Crossing the bridge from Three Rivers to Piles Branch, heavy sand will be encountered for about four miles, getting better towards Champlain, and continue about the same to Batiscan; here cross by the ferry, which consists of one of the latest inventions and rowed on the "windlass" plan. When across the tourist will do well to enquire of the natives which is the proper road to take.

After a couple of miles a novelty in the line of roads will be encountered in the form of sawdust, which is not as bad as sand, but is very heavy wheeling until past St. Anne de la Parade, where macadam roads will be found through Grondines, Lachevrotiere, Deschambault, and then the nicest piece of road of the whole trip is from the latter place to Portneuf, a distance of six miles. At this place, a boarding house only can be had instead of a hotel as is usually the case, and the traveller is advised here to fill his pockets (so to speak) for future occasions with the necessities of life, it being very hard to get anything that is palatable for a good many miles afterwards.

Leaving Portneuf, roads begin to get very hard with clay lumps, making very slow wheeling to St. Bazile, and getting rocky and very "hilly" towards Point Rouge. Up to this point the land has been very level

FR

but stee
countere
tinue fro
miles th
The road
and gett
clay road

Mr. Lou
Bicycle
Thomlin

MILEAGE.

20

17

13

16

23

20

6

15

12

15

18

10

10

18

89

120

175

FROM MONTREAL TO QUEBEC—*Continued.*

but steep hills where "walking is good" will be encountered from here to Quebec. Macadam roads continue from Pt. Rouge to Belair, a distance of fifteen miles the longest distance between any of the towns. The roads then incline to clay passing through Lorette and getting better towards Quebec. Of course these clay roads were passed over on dry days, when it rains

— — — — —. This journey was performed by Mr. Louis Rubenstein, Vice-president of the Montreal Bicycle Club, who was accompanied by Mr J. H. Thomlinson of the same club.

Levis to Matane.

MILEAGE.		TOWNS.	HOTELS.
		Levis	
20		St. Michel	
17		Montmagny	
13		L'Islet	
16		St. Roch.	
23	89	Kamouraska	
20		Notre Dame du Portage .	
6		Riviere du Loup	
15	120	Cacouna	
12		Isle Verte	
15		Trois Pistoles	
18		St. Fabien	
10	175	Bic	
10		Rimouski	
18		St. Flavie	

LEVIS TO MATANE—Continued.

MILEAGE.	TOWNS.	HOTELS.
10	Grand Metis	
7	Little Metis	
26 246	Matane	

Total distance from Levis to Matane is 246 miles; from Bic to Matane is 71 miles, splendid road, can be ridden in 6 hours in any weather; the road is also very good in any weather from Notre Dame du Portage to Riviere du Loup and Cacouna, and generally speaking, if weather is dry, that portion between Levis and Notre Dame du Portage will be good, but being clay soil becomes bad in wet weather.

No place in Canada presents a prettier marine view than that to be seen at Bic.

"*Maison de Pension*" (eating houses) are to be found at nearly all places *en route*, but those at St. Michel, L'Islet, Kamouraska, Riviere du Loup, Cacouna, Isle Verte, Trois Pistoles, Bic, Little Metis and Matane are recommended—Fraser's hotel at Matane.

During the bathing season finest hotel accommodations to be had at Cacouna and Little Metis.



MILEAGE.

35

30

15

40

55

75 260

Take
St. John
at Grand
road is
scenery
trip in a

MILEAGE.

50

48

29

HOTELS.

MARITIME PROVINCES.

Edmunton to St. John.

MILEAGE.	TOWNS.	HOTELS.
	Edmunton.....	
35	Grand Falls.....	Grand Falls.
30	Aroostock Junction.....	
15	Andover.....	
40	Woodstock.....	
55	Fredericton.....	Queen's.
75 260	St. John..	Royal.

Take the Maine post road on the west side of the St. John River—hard clay with good gravel stretches at Grand Falls—to Fredericton, from which point the road is well kept gravel to St. John. Very fine scenery along the river. Fair hotels throughout the trip in any of the villages.

St. John, N.B. to Halifax, N.S.

MILEAGE.	TOWNS.	HOTELS.
	St. John.....	Royal.
50	Sussex.....	
48	Moncton.....	Brunswick.
29	Dorchester.....	

ST. JOHN, N.B., TO HALIFAX, N.S.—*Continued.*

MILEAGE.		TOWNS.	HOTELS.
13	140	Sackville.....	
9		Amherst	Amherst.
20		Springhill Junction	
45		Londonderry	
19		Truro	Prince of Wales.
17		Stewiacke.....	
4		Shubenacadie	
10		Elmsdale.....	
7		Grand Lake	
8		Waverley	
8		Bedford	Bellevue.
5		Rockingham.....	St. Elmo.
1		Three Mile House	
3	296	Halifax	Halifax.

North-easterly to Moncton over hard gravel road; thence easterly to Amherst—clay and sand—fair to good riding. From Amherst to Truro, south-east, is heavy sand, then good clay to Grand Lake and fine gravel thence to Halifax.

Yarmouth to Annapolis.

MILEAGE.		TOWNS.	HOTELS.
		Yarmouth	Queen's.
4		Hebron	
8		Metaghan	
24		Little Brook.....	
12		Weymouth	

YARMOUTH TO ANNAPOLIS—*Continued.*

MILEAGE.	TOWNS.	HOTELS.
20	Digby.....	Short's.
4	Bear River.....	Goodiven's.
8	Clementsport.....	
9 89	Annapolis	American.

Steamers make regular trips from St. John, N.B. to Annapolis—40 miles. The road from Yarmouth follows the shore of Bay Fundy to Digby, thence round Annapolis Basin. Hard beach gravel all the way, making a beautiful run.

Annapolis to Windsor.

MILEAGE.	TOWNS.	HOTELS.
	Annapolis	American.
6	Roundhill	
8	Bridgetown.....	Revere.
5	Paradise	
3	Lawrencetown	
6	Middletown	American.
4	Wilmot	
3	Kingston	
5	Auburn	
2	Aylesford	
5	Berwich	Thorndyke.
3	Waterville	
9	Kentville.....	Porter.
7	Wolfville	Boyal.
3	Grand Pre	Dunedin.

ANNAPOLIS TO WINDSOR--*Continued.*

MILEAGE.	TOWNS.	HOTELS.
1	Horton Bridge.....	
7	Hantsport.....	Wall's.
7 84	Windsor	Victoria.

Main post road, hard gravel to Bridgetown ; then by centre road 2 miles north of Bridgetown to Berwick, good clay ; again striking main road as far as Hantsport, from which take the Bog road to Windsor. The centre road runs 2 miles north of all the villages between Bridgetown and Berwick, but the direct road is very heavy sand.

Wolfville to Cape Blomidon.

MILEAGE.	TOWNS.	HOTELS.
	Wolfville	Royal.
3	Port William	
3	Canard	
3	Canning	Baxter's.
4 13	Blomidon	

First-class hard gravel road to Canard, then slightly sandy, but good riding to Blomidon look off, from which point can be seen the home of Evangeline (15 miles distant) Minas Basin and the old farms of the Acadians—a beautiful trip.

Wolfville to Grand Pre.

MILEAGE.	TOWNS.	HOTELS.
	Wolfville.....	Royal.
3	Grand Pre	Dunedin.

Fine gravel road easterly. At Grand Pre will be found the home of Evangeline, the old well and tree still being pointed out to tourists.

Yarmouth to Halifax.

MILEAGE.	TOWNS.	HOTELS.
	Yarmouth.....	Queen's.
30	Barrington.....	
36	Shelburne.....	
36	Liverpool	
26	Bridgewater.....	Clark's.
12	Lunenburg	King's.
25	Chester	Lovett.
20	Hubbard's Cove	
10	Margaret's Bay	
20	215 Halifax.....	Halifax.

The "Southern route" by the main post road is good hard clay with some sand to Lunenburg, from which point to Halifax is first-class gravel. It is hardly as good a route as *via* Annapolis and Windsor, and lacks the advantage possessed by the other route, of proximity to railways. The Atlantic ocean is however in full view the whole distance.

Windsor to Halifax.

MILEAGE.	TOWNS.	HOTELS.
	Windsor	Victoria.
6	Newport Station.....	Gibson's
4	Martin's Corners.....	
11	Mount Uniacke.....	
16	Bedford	Bellevue.
5	Rockingham.....	St. Elmo.
2	Three Mile house.....	
3 46	Halifax	Halifax.

Main post road north-easterly, good gravel to Martin's corners, then fair clay to Bedford, and fine gravel to Halifax.



MAI

MILEAGE

6

6

7

4 23

Go s
to Selki
good cla
At S
it is he
Paul's,
School,
Lower l
Hudson
the Gov
Domini
Reserve
could a
being p

HOTELS.

ria.
on's

vue.
lmo.

ax.

gravel to
and fine

MANITOBA AND N.-W.T.

Winnipeg to Selkirk.

MILEAGE.	TOWNS.	HOTELS.
	Winnipeg.....	Leland.
6	Kildonan.....	
6	Parkdale.....	
7	Lower Fort Garry.....	
4 23	West Selkirk.....	Donhoue's.

Go straight from Winnipeg *via* Main street north to Selkirk—one road, and no one could miss it—a good clay road but not passable after a shower.

At Selkirk, is a historic church and graveyard, as it is here all the old first settlers are buried. At St. Paul's, two miles further on, is an Indian Industrial School, carried on by the Episcopalian Church. At Lower Fort Garry is a stockaded fort yet used by the Hudson Bay Co. At Selkirk is a Lunatic Asylum and the Government Fish Hatcheriee (the largest in the Dominion). A trip further north to the Indian Reserve might be interesting, especially if the tourist could arrive about the time "treaty money" was being paid.

Brandon to Moosomin.

MILEAGE.		TOWNS.	HOTELS.
		Brandon	Grand View.
8		Kemnay	
8		Alexander	Commercial.
9		Griswold	
9	34	Oak Lake	Leland.
8		Routledge	
10	52	Virden	Balmoral.
8		Hargrave	
10	70	Elkhorn	Cavanagh.
13		Fleming	
9	92	Moosomin	Queen's.

Little more may be said about this road than that it lies almost parallel with the railway track and is well travelled, affording good wheeling the full distance. The soil is clay with slight mixture of sand and gets into wheeling shape very soon after even a heavy rain. Virden, a nice Manitoba town, built mostly of stone, is by all odds the best midway stopping-place.

Winnipeg to Portage la Prairie.

MILEAGE.		TOWNS.	HOTELS.
		Winnipeg	Leland.
4		St. James	
15		Deer Lodge	Chadwick's.
15	5	Silver Heights	
2		St. Charles	
5	12	Headingley	Royal Arms.
5		St. Francois Xavier	
6		Pigeon Lake	

WINN

MILEAGE

7 3

16

10

7 6

This
the earl
the tou
scenery

Leav
straight
old Ass
from th
A. Smi
the last
Sir Do
Herefo
Pigeon
trail.

over th
leads to
in and
Point ;
come to
directi
to Por
road of
tourist
shortes
betwee
way.
the riv
the wi

WINNIPEG TO PORTAGE LA PRAIRIE—Continued.

HOTELS.	MILEAGE.	TOWNS.	HOTELS.
d View.	7 30	Baie St. Paul.....	
mercial.	16	Poplar Point.....	
d.	10	High Bluff.....	
	7 63	Portage la Prairie.....	Albion.

This road is always good except after a rain or in the early spring. The road is a heavy clay and gives the tourist a glimpse of the variety of Manitoba scenery.

Leave Winnipeg by Portage avenue which goes straight through to Portage la Prairie and follows the old Assiniboine Trail. At Silver Heights, 5 miles from the city is the Manitoba residence of Sir Donald A. Smith, and here are to be found a herd of buffalo—the last of that noble race to be found in Manitoba. Sir Donald also has some fine Highland cattle and Hereford's. Headingly, St. Francois Xavier and Pigeon Lake, can be seen by keeping right on the same trail. When going through Baie St. Paul, after going over the third bridge, take the trail to the left; this leads towards the river and the river will be followed in and out for 3 or 4 miles and lead out to Poplar Point; keep the same trail for High Bluff until you come to where the trail apparently divides, going three directions—take the middle trail. From High Bluff to Portage la Prairie is considered the finest piece of road on the trip. This trip is full of interest to the tourist and he will have to keep his wits to go the shortest way, but he can hardly get lost as he is between the railroad and the Assiniboine River all way. The scenery is nicely varied with riding along the river curves through the bush and again out on the wide prairie.

Winnipeg to Emerson.

MILEAGE.	TOWNS.	HOTELS.
	Winnipeg	Leland.
9	St. Norbert....	
15	St. Agathe.....	Oliver's Stopping Place.
16 40	Morris	Commercial.
7	St. Jean Baptiste...	Parenteau's.
9	Letellier.....	Parent's.
9 65	Emerson	Russell.

This is a clay road all the way through and is well travelled. Except after a rain it is excellent wheeling the whole distance.

Starting from the Leland House, Winnipeg, turn south on Main street across the Assiniboine and down River avenue and Pembina street. Follow the electric car track as far as the Pembina school, turning there to the right, and by taking this trail it will lead right out towards the river and to St. Norbert. From here on, the road runs between the river and the railway track and the scenery is very pretty. Around St. Agathe the road is more apt to be cut up. With the roads in anything like their normal condition, Morris can be reached by noon and the tourist is sure of a good meal at the Commercial. The road from Morris to Letellier runs along the track, sometimes on one side and sometimes on the other. After leaving Letellier cross the track below the elevator and take the first good trail running to the left (towards the river), and this leads right to the bridge crossing the river to Emerson. From Emerson to Pembina, N.D., is only about three miles and is a good road.

MILEAGE

8
8
10 2
8
8
8
8
8
9
8
6
6

Foll
Culloc
again
follows
through
road to
practic
up to
Austin
Sidney
the roa
past S
until l
tourist
stay o
road t

Portage la Prairie to Brandon.

HOTELS.	MILEAGE.	TOWNS.	HOTELS.
nd.		Portage la Prairie	Albion.
	8	Burnside	
ing Place.	8	Bagot	
mercial.	10 26	McGregor	Stanley House.
nteau's.	8	Austin.....	Duncan's.
nt's.	8	Sidney	Sidney House.
ell.	8	Melbourne.....	
	8 38	Carberry	Western House.
nd is well	9	Sewell	
t wheeling	8	Douglas	New Douglas.
	6	Chater	
ipeg, turn	6 87	Brandon	Grand View.
and down			
he electric			
ing there			
lead right			
From here			
e railway			
round St.			
With the			
n, Morris			
sure of a			
m Morris			
es on one			
er leaving			
and take			
wards the			
crossing			
Pembina,			
d road.			

Follow Saskatchewan avenue west as far as McCulloch's, take the trail to the right and go direct west again over a good road. This is one "trail" and follows almost parallel to the railway track clear through to Moosomin. After passing McGregor the road to Austin goes through the sand hills which are practically "unwheelable," as the machine would sink up to the hubs in the soft, yielding sand. From Austin to Sidney the road is fair but sandy, and from Sidney to Carberry is again through sand hills. As the road leaves Carberry it is light, but after getting past Sewell is much better wheeling and improves until Brandon, "the wheat city" is reached. The tourist is advised to board the C.P.R. at Portage and stay on board until Carberry is reached, as on this road there would be a lot of "get off and push."

Calgary to MacLeod.

MILEAGE.	TOWNS.	HOTELS.
	Calgary	Royal.
	Fish Creek	
	Pine Creek	
	Dewdney	Queen's.
40	High River	High River.
	Mosquito Creek.....	
110	MacLeod	MacLeod.

Take the MacLeod trail, which is fair level riding to Dewdney, and then rather hilly, but good and hard. The farmers are hospitable and the scenery grand; a number of little creeks are crossed, but railway bridges are convenient.

Calgary to Langdon.

MILEAGE.	TOWNS.	HOTELS.
	Calgary	Royal.
28	Langdon	

North-east and south-east by Blackfoot trail—rather hilly, but good road.

Calgary to Twin Bridges.

MILEAGE.	TOWNS.	HOTELS.
	Calgary	Royal.
9.25	Twin Bridges	

West on the North Morley trail—a little hilly at the start but further on level, and all good roads; fine scenery and trout fishing on Bow River.

HOTELS.

val.

een's.

gh River.

cLeod.

level riding
d and hard.
ery grand ;
out railway

HOTELS.

al.

oot trail—

HOTELS.

al.

ttle hilly at
roads ; fine





CYCLISTS' ROAD MAP

OF ONTARIO

Specially drawn for Cyclists' Road Guide

Red Lines indicate the Roads
Black Lines indicate Railways

C. W. Harndall

MANUFACTURER
OF THE . . .

Harndall Bicycle Wood Rim

165 Queen Street East
Toronto

J. W. DAVIS

WILL S. ZILLER

DAVIS BROS.

DIAMOND MERCHANTS

AND . . .

JEWELLERS

MANUFACTURERS
OF THE
CENTURY ROAD CLUB BADGES

130 AND 132 YONGE STREET
TORONTO

Laforce's New Tire



Requires no wires or
cement

The only tire on earth
that will fit any
style of rim.

Is the easiest riding
tire on the
market

Be sure and see it.

The Laforce Pneumatic Bicycle Tire Co., Ltd.
52 Wellington St. West, Toronto

W. H. MILN, Publisher
Semi-Monthly
\$1.00 per Annum

The bright, new way,
Cyclists' Journal of
Canada

"CYCLING"

A great deal of the
pleasure of wheeling
by not reading

YOU MISS

Tailors and Importers
137 Yonge St., Toronto

C. A. Deeks & Bro.

Make
Bicycle . . .
Uniforms
something nice
for all the city clubs
and for many outside
the city, communicate
with us if you want

Tailors and Importers
137 Yonge St., Toronto

C. A. Deeks & Bro.

F. J. WHATMOUGH
CHIEF CENTURION
481 CHURCH ST. TORONTO
L. D. ROBINSON
SECRETARY
269 SPADINA AVE., TORONTO

Blank form of application for
Bar may be obtained from the
Secretary or Chief Centurion!!

1. All amateur wheelmen are eligible for membership.
2. Wheelmen must qualify for membership by riding 100 miles according to the rules of the Club.
3. Actual elapsed time allowed 14 hours. Ladies shall be allowed 16 hours.
4. No track or asphalt allowed.
5. Entire distance must be made a wheel or on foot; no taking of trains between points.
6. Centuries must be made in company when possible. If made alone, satisfactory proof must be furnished of time, start, finish, etc.
7. No centuries allowed unless application be made within 30 days.
8. Upon application for Badge and Bar, and the payment of initiation fee (\$3.00), the applicant is presented with the Club Badge and Bar, with date of making century engraved on Bar.
9. Other Bars cost 75c. each.

RULES AND REGULATIONS

OF CANADA

Century Road Club

The Planet

UNSURPASSED IN ...

QUALITY OF MATERIAL

STRENGTH OF CONSTRUCTION

SUPERIORITY OF WORKMANSHIP

Planet Cycle Works

69 Queen St. East

FACTORY AND OFFICE:

Toronto . . .

McLEAN & BULLEY, PROPS

WRITE FOR CATALOGUE...

..BRANTFORD.. ..CYCLES..

Are giving universal satisfaction and are
receiving flattering comment
from every quarter

THE '94 BRANTFORDS..
ARE BEAUTIES

Then ride a Brantford
Manufactured
by....

The

GOOLD BICYCLE CO., LTD.
BRANTFORD

..R. A. McCready..
General Sportsmen's 149 Yonge Street
Supplies

Send for list

before purchasing

Wheel...

Fail not to inspect this

and Finish

Unsurpassed for Quality, Style

Birmingham Cycle Show

at...

Winners of Silver Medal

Unity. Cycles

Hamming Arcade
24 King Street West
Toronto

Telephone
587

Cycle Printing

to all...
the special attention

The Birmingham
Printing
Co.

