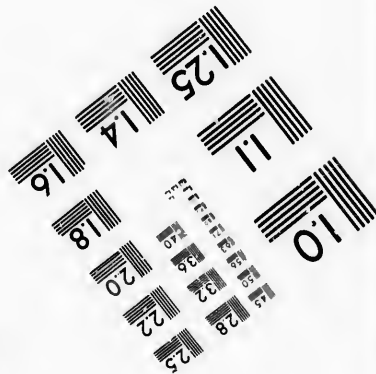
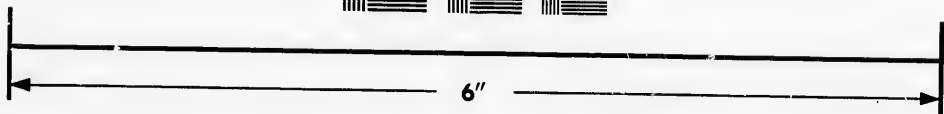
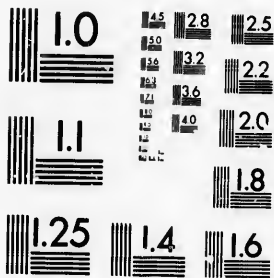


**IMAGE EVALUATION
TEST TARGET (MT-3)**



**Photographic
Sciences
Corporation**

23 WEST MAIN STREET
WEBSTER, N.Y. 14580
(716) 872-4503



**CIHM/ICMH
Microfiche
Series.**

**CIHM/ICMH
Collection de
microfiches.**



Canadian Institute for Historical Microreproductions / Institut canadien de microreproductions historiques



© 1986

Technical and Bibliographic Notes/Notes techniques et bibliographiques

The Institute has attempted to obtain the best original copy available for filming. Features of this copy which may be bibliographically unique, which may alter any of the images in the reproduction, or which may significantly change the usual method of filming, are checked below.

L'Institut a microfilmé le meilleur exemplaire qu'il lui a été possible de se procurer. Les détails de cet exemplaire qui sont peut-être uniques du point de vue bibliographique, qui peuvent modifier une image reproduite, ou qui peuvent exiger une modification dans la méthode normale de filmage sont indiqués ci-dessous.

- | | |
|------------------------------------------------------------------------------------------------------------------------------------------------------------------------------------------------------------------------------------------------------------------------------------------------------------------------------------------------|--------------------------------------------------------------------------------------------------------------------------------------------------------------------------------------------------------------------------------------------------------------------------------------------------------------------------------------------|
| <input type="checkbox"/> Coloured covers/
Couverture de couleur | <input type="checkbox"/> Coloured pages/
Pages de couleur |
| <input type="checkbox"/> Covers damaged/
Couverture endommagée | <input type="checkbox"/> Pages damaged/
Pages endommagées |
| <input type="checkbox"/> Covers restored and/or laminated/
Couverture restaurée et/ou pelliculée | <input type="checkbox"/> Pages restored and/or laminated/
Pages restaurées et/ou pelliculées |
| <input type="checkbox"/> Cover title missing/
Le titre de couverture manqué | <input checked="" type="checkbox"/> Pages discoloured, stained or foxed/
Pages décolorées, tachetées ou piquées |
| <input type="checkbox"/> Coloured maps/
Cartes géographiques en couleur | <input type="checkbox"/> Pages detached/
Pages détachées |
| <input type="checkbox"/> Coloured ink (i.e. other than blue or black)/
Encre de couleur (i.e. autre que bleue ou noire) | <input checked="" type="checkbox"/> Showthrough/
Transparence |
| <input type="checkbox"/> Coloured plates and/or illustrations/
Planches et/ou illustrations en couleur | <input type="checkbox"/> Quality of print varies/
Qualité inégale de l'impression |
| <input type="checkbox"/> Bound with other material/
Relié avec d'autres documents | <input type="checkbox"/> Includes supplementary material/
Comprend du matériel supplémentaire |
| <input type="checkbox"/> Tight binding may cause shadows or distortion
along interior margin/
La reliure serrée peut causer de l'ombre ou de la
distorsion le long de la marge intérieure | <input type="checkbox"/> Only edition available/
Seule édition disponible |
| <input type="checkbox"/> Blank leaves added during restoration may
appear within the text. Whenever possible, these
have been omitted from filming/
Il se peut que certaines pages blanches ajoutées
lors d'une restauration apparaissent dans le texte,
mais, lorsque cela était possible, ces pages n'ont
pas été filmées. | <input type="checkbox"/> Pages wholly or partially obscured by errata
slips, tissues, etc., have been refilmed to
ensure the best possible image/
Les pages totalement ou partiellement
obscurcies par un feuillet d'errata, une pelure,
etc., ont été filmées à nouveau de façon à
obtenir la meilleure image possible. |
| <input type="checkbox"/> Additional comments:/ [Printed ephemera] [4] p.
Commentaires supplémentaires: | |

This item is filmed at the reduction ratio checked below/
Ce document est filmé au taux de réduction indiqué ci-dessous.

10X	12X	14X	16X	18X	20X	22X	24X	26X	28X	30X	32X
								✓			

The copy filmed here has been reproduced thanks to the generosity of:

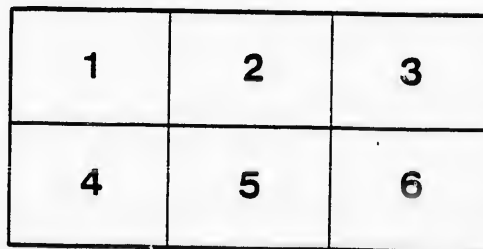
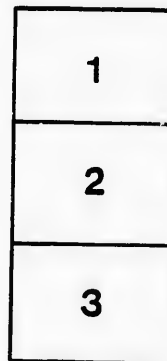
D. B. Weldon Library
University of Western Ontario
(Regional History Room)

The images appearing here are the best quality possible considering the condition and legibility of the original copy and in keeping with the filming contract specifications.

Original copies in printed paper covers are filmed beginning with the front cover and ending on the last page with a printed or illustrated impression, or the back cover when appropriate. All other original copies are filmed beginning on the first page with a printed or illustrated impression, and ending on the last page with a printed or illustrated impression.

The last recorded frame on each microfiche shall contain the symbol \rightarrow (meaning "CONTINUED"), or the symbol ∇ (meaning "END"), whichever applies.

Maps, plates, charts, etc., may be filmed at different reduction ratios. Those too large to be entirely included in one exposure are filmed beginning in the upper left hand corner, left to right and top to bottom, as many frames as required. The following diagrams illustrate the method:



L'exemplaire filmé fut reproduit grâce à la générosité de:

D. B. Weldon Library
University of Western Ontario
(Regional History Room)

Les images suivantes ont été reproduites avec le plus grand soin, compte tenu de la condition et de la netteté de l'exemplaire filmé, et en conformité avec les conditions du contrat de filmage.

Les exemplaires originaux dont la couverture en papier est imprimée sont filmés en commençant par le premier plat et en terminant soit par la dernière page qui comporte une empreinte d'impression ou d'illustration, soit par le second plat, selon le cas. Tous les autres exemplaires originaux sont filmés en commençant par la première page qui comporte une empreinte d'impression ou d'illustration et en terminant par la dernière page qui comporte une telle empreinte.

Un des symboles suivants apparaîtra sur la dernière image de chaque microfiche, selon le cas: le symbole \rightarrow signifie "A SUIVRE", le symbole ∇ signifie "FIN".

Les cartes, planches, tableaux, etc., peuvent être filmés à des taux de réduction différents. Lorsque le document est trop grand pour être reproduit en un seul cliché, il est filmé à partir de l'angle supérieur gauche, de gauche à droite, et de haut en bas, en prenant le nombre d'images nécessaire. Les diagrammes suivants illustrent la méthode.

aire
détails
ues du
modifier
ger une
filmage

es

errata
to

pelure.
on à



32X

LONDON PTD & LITHO IN U.S.A.

MICHIGAN, OHIO
CANADIAN CIRCUIT
EIGHTEEN
THEATRES

CLEVELAND, CINCINNATI, BUFFALO,
DETROIT, TORONTO,
TOLEDO, LONDON, HAMILTON,
WOODSTOCK, SAGINAW,
GRAND RAPIDS, BAY CITY AND
JACKSON.

Grand OPERA HOUSE London.

C. J. WHITNEY. A. E. ROOTE. ONTARIO.
LESSEE. MANAGER



W. SMITH.

E. HOLLAND.

W. S. PARTRIDGE.

SMITH & BROS.

THE
LEADING
SANITARY
PLUMBERS
AND
HEATING
ENGINEERS
OF
WESTERN
ONTARIO.

376
RICHMOND STREET,

LONDON.

OPPOSITE GRAND OPERA HOUSE BUILDING.

A full stock of Supplies always on hand.

TELEPHONE 538.

LADIES! THE ONLY WAY TO GET HELP IS THROUGH THE "FREE PRESS" WANT COLUMN.



**Parisian
Steam
Laundry**

73 & 75 DUNDAS STREET.

BRANCH OFFICES:

225 Dundas St. 752 Waterloo. 410 Hamilton Rd.
280 " " 572 Pall Mall. 251 Wellington.
310 " " 380 Richmond. 338 Ridout.
032 " " 485

J. K. SPRY, Manager.

HUESTON'S

**LIVERY,
Goupe & Cab Stables**
WELLINGTON STREET.

Finest Horses and Carriages in the City.
OPEN DAY AND NIGHT. TELEPHONE 441.

ROBT. HUESTON,
Proprietor.

H. McKENNA,
—FOR—

Choice Cigars, Tobaccos

AND PIPES.

ALWAYS OPEN
..... AFTER THE OPERA.

225 DUNDAS STREET.

SPRING



1894.

WE have just received the finest assortment of Spring Hats ever shown in the city. We are leaders for correct shapes, try us. A pleasure to show goods.

Rivard

LONDON'S
FASHIONABLE
HATTER AND
FURRIER

400 RICHMOND
STREET.

IF YOU WANT

WILLIAMS' Pianos CANADA'S FAVORITE

Cannot be excelled for touch, singing quality, delicacy and great power of tone, with highest excellence of workmanship.

ALL THE LATEST VOCAL AND INSTRUMENTAL MUSIC RECEIVED AS PUBLISHED.

Musical Instruments of all kinds, Strings and Fittings
AT LOWEST PRICES.

R. S. WILLIAMS & SON, 171 DUNDAS STREET,
LONDON, ONT.

J. A. CRODEN, Manager.



PROGRAMME

Monday Evening, February 12th.

BARNABEE, KARL & MACDONALD'S 1894

Robin Hood Opera Co.

PRESENTING DEKOVEN & SMITH'S GREAT
COMIC OPERA

**Robin
Hood**

(Programme continued on next page.)

SOMETHING NEW.

Opera English & Canadian
Caramels. Chocolate Creams.

VERY FINEST French Crystalized FRUITS. Olives in Bulk.
.. Fresh Roquefort Cheese..

FITZGERALD, SCANDRETT & CO.
169 Dundas Street.

ESTABLISHED 1831.

**H. DAVIS & SON,
WATCHMAKERS**

AND
JEWELLERS

DEALERS IN

Watches, Clocks, Jewellery, Spectacles,
Silver Plated Ware, &c.

170 DUNDAS ST., LONDON, ONT.

W. T. STRONG

Dispensing
Chemist,

184 Dundas Street,
LONDON, - ONTARIO.

BROWN'S

Central Shoe Store,

145 DUNDAS ST.



We inventory February 20th, and determined to reduce our Stock as much as possible before that date. To do this, we have cut prices to a figure heretofore unheard of for such quality of goods. This Great Reduction will place the best selected stock of Staple and High-Grade Shoes within the reach of all.

REMEMBER, WE KEEP NO INFERIOR OR

SHODDY GOODS.

... EVERY LINE OF ...

BOOTS, SHOES, SLIPPERS, RUBBERS, OVERSHOES,
OVERGAITERS, LEGGINGS, MOCCASINS, ETC.,

IS THE BEST OF ITS KIND.

Our position enables us to sell cheaper than any other shoe store in this western section; but this Special Reduction cannot fail to further convince the Public, that for reliable footwear, in all Standard Styles, "Brown's is undoubtedly the Cheapest."

THIS CUT-DOWN-PRICE

—will also apply to our—

HANDSOME AMERICAN DESIGNS IN

LADIES' AND GENTS' DRESS SHOES,

WALKING, SKATING AND HOCKEY BOOTS;

Also our Complete, and unexcelled (for Style and Finish) assortment of YOUTHS', MISSES', BOYS', GIRLS' AND BABY SHOES.

NO RESERVE.

John S. Brown,

TELEPHONE 381.

BEST, TAKE THE "FREE PRESS." ALL THE NEWS!

IF YOU SEE IT IN THE "LONDON FREE PRESS," IT IS SO!

— TRY —
SOUTHGOTT'S

FOR Nice Suit
Fancy Vest
OR Trousers

NEAT LINE OF LIGHT-WEIGHT OVERCOATINGS IN STOCK.

Satisfaction Assured. Prices Right.

361 RICHMOND STREET.

I-I-I-I-I-I-I-I-I-I

PRINTERS
LITHOGRAPHERS
ENGRAVERS

The
**London
Printing and
Lithographing
Co'y,**
SUCCESSORS TO FREE PRESS
PRINTING AND LITHO.
DEPARTMENTS.

OFFICE,
"FREE PRESS"
BUILDING.

BEST WORK
AT MODERATE
PRICES.

I-I-I-I-I-I-I-I-I-I

TECUMSEH HOUSE

LONDON.



Directly opposite G.T.R. depot;
street railway past the doors;
convenient to all the wholesale
and retail business houses of
city, making it the most desir-
able hotel in the city; elevator,
and heated throughout with
steam.

Porter in attendance on
arrival of all trains.

**RATES, \$2.00 AND \$2.50
PER DAY,**

ACCORDING TO LOCATION.

No Extra Charge For Baggage.

C. W. DAVIS, PROP.

LATEST SHAPES

In American and English

Spring Hats

JUST OPENED.

GRAHAM BROS.,

Leading Hatters and Furnishers.

«Programme Continued.»

CAST OF CHARACTERS.

Sheriff of Nottingham Jerome Sykes
Little John.....Edwin Isham
Robin Hood.....E. S. Wentworth
Will Scarlet Louis Casavant
Allan-a-Dale.....Mary Palmer
Friar Tuck James Nickolds
Guy of Gisborne..... Ross David
Maid Marian..... Fatimah Diard
Dame Durdan..... Agnes Stone
Annabel..... Ethel Balch

SYNOPSIS.

ACT I.—Market Place in Nottingham.
ACT II.—Sherwood Forest.
ACT III.—Public Square in Nottingham.

EXECUTIVE STAFF.

Manager..... For
Acting Manager } Barnabee Karl { Kirk La Shelle
Musical Director. } and { Frank W. Conant
Stage Director. } MacDonald. { J. A. Robertson
.....Jerome Sykes

(Programme continued on last page.)

McLEAN'S HARDWARE

— FOR —

Bissell's Carpet Sweepers.

WE CAN SHOW YOU TWELVE DIFFERENT STYLES SAME
AS ARE NOW DISPLAYED BY THE BISSELL COM-
PANY AT THE WORLD'S FAIR.

CALL AND SEE THESE GOODS

— AT —

McLEAN'S HARDWARE,
151 Dundas Street.

Wm. Stevely & Son,

— THE LEADING DEALERS IN —

STOVES, RANGES,

.. AND ..

HOUSE FURNISHING GOODS.

OUR STOCK IS THE LARGEST.

OUR PRICES THE LOWEST.

362 RICHMOND STREET.

PHONE 452.

W. T. STRONG,

Dispensing

Chemist,

184 DUNDAS ST.,

LONDON, ONT.

.. FOR ..

Fine Etchings....

— AND —

Engravings

— TRY —

O. B. GRAVES,

222 DUNDAS STREET.



BRENER BROS.

LONDON ONT.

FOR SALE AT

JOE RANKIN'S

.... OPPOSITE MASONIC TEMPLE.

LOOK OUT FOR THE "LONDON FREE PRESS" ON ALL EARLY MORNING TRAINS.

EDY BROS.

The Artistic Photographers,

—RECEIVED—

Three First Prizes

—AND—

DIPLOMA

For Finest Display of Photography
AT WESTERN FAIR, 1893.

Cabinet Photos, \$3 per doz.

EDY BROS.

214 DUNDAS STREET.

The **HUB** 

Restaurant,

203 & 205 DUNDAS STREET.

For a NICE LUNCH after the
Opera, go to the
Hub Restaurant.

Steaks, Chops, Chicken,
Oysters, Etc.

OPEN TILL 12.00 P.M.

J. W. MARTIN, Prop.
(Late of the Martin House)

« Programme Concluded. »

During the evening, incidental to the stage performance, the ORCHESTRA of the Grand Opera House, under the direction of MR. FRED. L. EVANS, will perform the following selections

OVERTURE—"Bohemian Girl,"..... Balfe
SELECTION—"Dorothy,"..... Cellier
LANCERS—"Wang" (by request),..... Boettger
GALOP—"Comet,"..... Weingarten

The above programme subject to transposition

N. B.—The Orchestra of the Grand Opera House may be secured for engagements outside the theatre, by applying at or addressing the Box Office.

The Furniture used on stage is supplied by JOHN FERGUSON & SON, Furniture Manufacturers.

NEXT + ATTRACTION

To-Morrow! Tuesday, Feb. 13th.

ENGLAND'S PRIDE
AND.....
AMERICA'S FAVORITE,



Bessie Bonehill

IN THE NAUTICAL COMEDY FARCE

PLAYMATES

With the following recognized, high salaried
specialty artists:

SEELY & WEST CHAS. JEROME
MINNIE THURGATE
WILLIAM JEROME ANNETTE ZELNA
BESSIE TANNEHILL
WM. H. MAXWELL DIANA HARDING



Prices--25c., 50c., 75c. Seats now on Sale.

A FINE PERFORMANCE

is a satisfactory return for your money, but when you can get from us a superior quality of Coal or Wood at the same price you would pay for an inferior quality, it is even more satisfactory. When in need of "warmth," try us.

CAMERON'S

421 RICHMOND STREET,
and BURWELL STREET at G. T. R.

FIND YOUR FORTUNE IN LUCKY
SANTO DOMINGO

INVESTMENT BONDS guaranteed by the SANTO
DOMINGO GUARANTY CO.

Allotments take place monthly, and are payable in U. S. gold coin in sums of \$160,000, \$40,000, \$20,000, etc.
5,692 Bonds paid monthly, aggregating \$574,880. Subscription fees, \$10, \$5, \$2, \$1, 50c. and 25c.

Apply to Local Agents, or address,
**ANTONIO MORA, CITY OF SANTO DOMINGO,
SANTO DOMINGO, D. R.**

Roses, Carnations,

Palms,

Ferns, Bulbs,

J. GAMMAGE & SONS,

213 Dundas Street.

INDIAN... **TEA IMPORTING HOUSE.**
CEYLON

NEW BLENDS, DELICIOUS AND ECONOMICAL, AT MODERATE PRICES.

"English Breakfast," "Five o'clock Tea," & "Club House" Blends.
80c. 50c. 45c.

These Blends are standard selections of choice Teas. Highly recommended to families for their fine quality and economical properties.

S. FUGE,

—IMPORTER OF—
CHOICE TEAS
TELEPHONE 858.

212 Dundas St.
LONDON.

