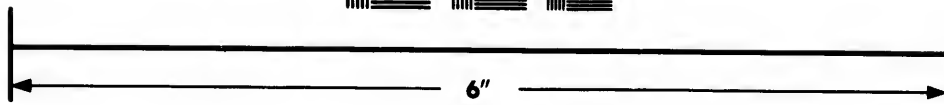
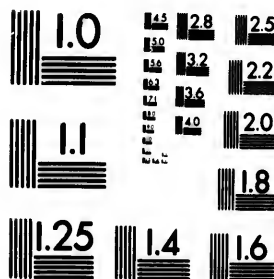


**IMAGE EVALUATION  
TEST TARGET (MT-3)**



**Photographic  
Sciences  
Corporation**

23 WEST MAIN STREET  
WEBSTER, N.Y. 14580  
(716) 872-4503

125  
22

**CIHM/ICMH  
Microfiche  
Series.**

**CIHM/ICMH  
Collection de  
microfiches.**



**Canadian Institute for Historical Microreproductions / Institut canadien de microreproductions historiques**

**© 1984**

Technical and Bibliographic Notes/Notes techniques et bibliographiques

The Institute has attempted to obtain the best original copy available for filming. Features of this copy which may be bibliographically unique, which may alter any of the images in the reproduction, or which may significantly change the usual method of filming, are checked below.

L'Institut a microfilmé le meilleur exemplaire qu'il lui a été possible de se procurer. Les détails de cet exemplaire qui sont peut-être uniques du point de vue bibliographique, qui peuvent modifier une image reproduite, ou qui peuvent exiger une modification dans la méthode normale de filmage sont indiqués ci-dessous.

- |  |  |
|--|--|
| <input type="checkbox"/> Coloured covers/<br>Couverture de couleur   | <input type="checkbox"/> Coloured pages/<br>Pages de couleur   |
| <input type="checkbox"/> Covers damaged/<br>Couverture endommagée  | <input type="checkbox"/> Pages damaged/<br>Pages endommagées   |
| <input type="checkbox"/> Covers restored and/or laminated/<br>Couverture restaurée et/ou pelliculée  | <input type="checkbox"/> Pages restored and/or laminated/<br>Pages restaurées et/ou pelliculées  |
| <input type="checkbox"/> Cover title missing/<br>Le titre de couverture manque   | <input checked="" type="checkbox"/> Pages discoloured, stained or foxed/<br>Pages décolorées, tachetées ou piquées   |
| <input type="checkbox"/> Coloured maps/<br>Cartes géographiques en couleur   | <input type="checkbox"/> Pages detached/<br>Pages détachées  |
| <input type="checkbox"/> Coloured ink (i.e. other than blue or black)/<br>Encre de couleur (i.e. autre que bleue ou noire)   | <input checked="" type="checkbox"/> Showthrough/<br>Transparence   |
| <input type="checkbox"/> Coloured plates and/or illustrations/<br>Planches et/ou illustrations en couleur  | <input type="checkbox"/> Quality of print varies/<br>Qualité inégale de l'impression   |
| <input type="checkbox"/> Bound with other material/<br>Relié avec d'autres documents   | <input type="checkbox"/> Includes supplementary material/<br>Comprend du matériel supplémentaire   |
| <input type="checkbox"/> Tight binding may cause shadows or distortion<br>along interior margin/<br>La reliure serrée peut causer de l'ombre ou de la<br>distortion le long de la marge intérieure   | <input type="checkbox"/> Only edition available/<br>Seule édition disponible   |
| <input type="checkbox"/> Blank leaves added during restoration may<br>appear within the text. Whenever possible, these<br>have been omitted from filming/<br>Il se peut que certaines pages blanches ajoutées<br>lors d'une restauration apparaissent dans le texte,<br>mais, lorsque cela était possible, ces pages n'ont<br>pas été filmées. | <input type="checkbox"/> Pages wholly or partially obscured by errata<br>slips, tissues, etc., have been refilmed to<br>ensure the best possible image/<br>Les pages totalement ou partiellement<br>obscurcies par un feuillet d'errata, une pelure,<br>etc., ont été filmées à nouveau de façon à<br>obtenir la meilleure image possible. |
| <input type="checkbox"/> Additional comments:/<br>Commentaires supplémentaires:  |  |

This is filmed at the reduction ratio checked below/  
Cet document est filmé au taux de réduction indiqué ci-dessous.

	14X	18X	22X	26X	30X
				<input checked="" type="checkbox"/>	
12X	16X	20X	24X	28X	32X

The copy filmed here has been reproduced thanks to the generosity of:

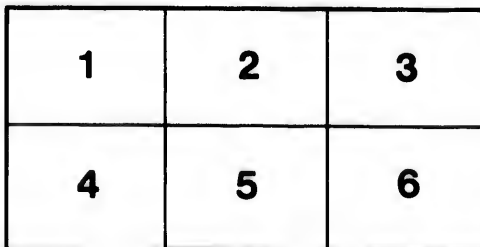
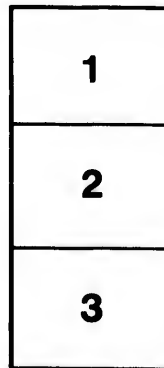
Library of the Public  
Archives of Canada

The images appearing here are the best quality possible considering the condition and legibility of the original copy and in keeping with the filming contract specifications.

Original copies in printed paper covers are filmed beginning with the front cover and ending on the last page with a printed or illustrated impression, or the back cover when appropriate. All other original copies are filmed beginning on the first page with a printed or illustrated impression, and ending on the last page with a printed or illustrated impression.

The last recorded frame on each microfiche shall contain the symbol  $\rightarrow$  (meaning "CONTINUED"), or the symbol  $\nabla$  (meaning "END"), whichever applies.

Maps, plates, charts, etc., may be filmed at different reduction ratios. Those too large to be entirely included in one exposure are filmed beginning in the upper left hand corner, left to right and top to bottom, as many frames as required. The following diagrams illustrate the method:



L'exemplaire filmé fut reproduit grâce à la générosité de:

La bibliothèque des Archives  
publiques du Canada

Les images suivantes ont été reproduites avec le plus grand soin, compte tenu de la condition et de la netteté de l'exemplaire filmé, et en conformité avec les conditions du contrat de filmage.

Les exemplaires originaux dont la couverture en papier est imprimée sont filmés en commençant par le premier plat et en terminant soit par la dernière page qui comporte une empreinte d'impression ou d'illustration, soit par le second plat, selon le cas. Tous les autres exemplaires originaux sont filmés en commençant par la première page qui comporte une empreinte d'impression ou d'illustration et en terminant par la dernière page qui comporte une telle empreinte.

Un des symboles suivants apparaîtra sur la dernière image de chaque microfiche, selon le cas: le symbole  $\rightarrow$  signifie "A SUIVRE", le symbole  $\nabla$  signifie "FIN".

Les cartes, planches, tableaux, etc., peuvent être filmés à des taux de réduction différents. Lorsque le document est trop grand pour être reproduit en un seul cliché, il est filmé à partir de l'angle supérieur gauche, de gauche à droite, et de haut en bas, en prenant le nombre d'images nécessaire. Les diagrammes suivants illustrent la méthode.

# COLONIAL ENGINEERING CO., Limited,

Consulting and Contracting Engineers.

222-224, St. JAMES STREET, - - MONTREAL.

## Machine Cut Double Helical Wheels,

WITH STAGGERED TEETH CUT IN SOLID BLANKS, WÜST'S PATENT,

Are **the** Gear for all **High-Speed and Heavy Drives** from electric motors, steam turbines, etc., and for the safest transmission of heavy torques, without vibration or shock.

They are **in successful operation** in connection with almost every class of machinery, and their advantages are particularly appreciated when driving:

**Pumps and Compressors,**

**Haulages,**

**Rolling Mills,**

**Machine Tools,**

**Calender Rolls,**

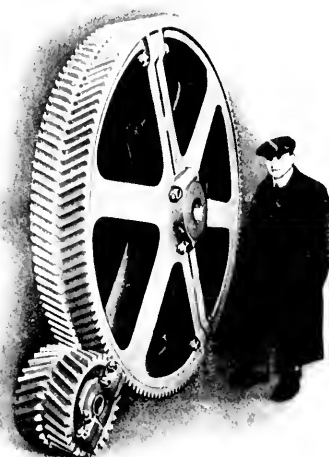
**Elevators,**

**Conveyors,**

**Woodworking Machinery,**

**Textile Machinery,**

**Coal Screening Plants, etc.**



8ft. Split Wheel and Split Pinion 2 1/2 in. pitch by 12 in. face.

These Gears have the following advantages over Straight Cut Wheels:—

1.—They are considerably stronger than straight cut wheels of similar dimensions, owing to the greater average engagement, and to the tooth pressure acting at a much smaller leverage than with straight cut teeth.

2. They can safely run at the highest velocities (up to 60 feet per second) without any danger, as they do not set up vibration. This is due to the fact that pinion and wheel do not suddenly come into and out of engagement as in straight wheels, whilst the total engagement is practically constant on account of the staggered arrangement of the teeth.

3. Owing to the engagement being gradual, the teeth are not subject to the hammering action so frequently met with in straight cut gears, where uneven torques have to be transmitted. Much finer pitches can be employed than usual in straight cut gear practice on account of greater strength and freedom from shocks.

4. They are far superior to raw hide and paper wheels in point of durability and strength.

5. They are less noisy than any other type of spur gear, and when running in oil bath and balanced with care, they can be considered as practically noiseless. This is accounted for by the gradual engagement.

6. The staggering of the teeth produces the same effect as halving the pitch and doubling the number of teeth in straight wheels, but without the corresponding reduction in strength.

7. They possess the highest efficiency, by reason of the almost complete absence of sliding friction.

8. They render the use of high ratios of reduction between pinion and wheel possible without any danger of rapid wear or noisy transmission. Single gear ratios up to 25 : 1 are already in successful operation. They are cheaper than machine cut double helical wheels as hitherto made.

**We supply these wheels in sizes up to 14 feet diameter and 3 feet wide with highest accuracy.**

## MACHINE CUT DOUBLE HELICAL WHEELS

have long been appreciated, but the old processes of making them, either by bolting together one right-hand and one left-hand helical wheel, or by milling out the teeth singly by means of a small milling cutter, make the wheels not only too expensive but do not admit of the highest accuracy.

**Our process of cutting Double Helical Wheels in one operation on a special double generating machine (Patent) ensures that high degree of accuracy, without which this type of gear has more drawbacks than advantages. It ensures absolute uniformity of all the teeth of a wheel, and theoretically accurate shape. The process is applicable to solid and split wheels, and the smallest pinions as well as the largest wheels are being cut by the same tools.**

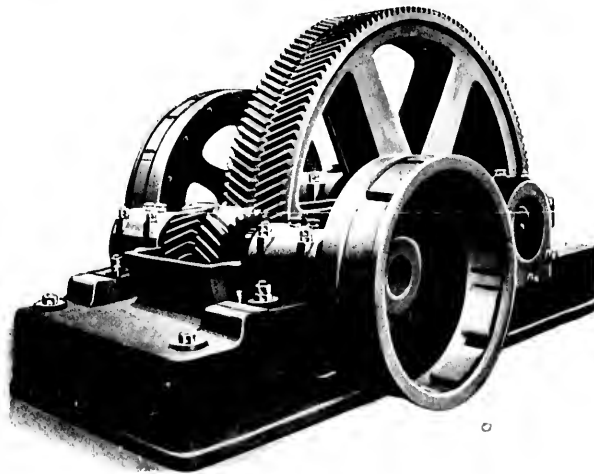
Double Helical Wheels should have a great width in proportion to their pitch. Our minimum standard width is equal to six times the pitch.

**To avoid delay, enquiries and orders should always contain the following particulars:—**

- Power to be transmitted by gear in B.H.P.
- Speed of driving shaft.
- Ratio of reduction.
- Distance between centres of shafts. If possible a certain margin should always be allowed.
- Pitch and width of face, if decided upon.
- Diameter of bore of pinion and wheel.
- Length of boss, whether flush with the rim or extended on one or both sides.
- Dimensions of keyways: if we are expected to cut same.
- If possible, sketch showing the arrangement required.
- Number of wheels of one size to be ordered at one time.
- Whether wheels are to be solid or split.

**ENQUIRY FORMS WILL BE SENT ON APPLICATION.**

**We call special attention to our high ratio Single Reduction Gears, and to our patent "D.R." Gears, which have all the advantages of Worm Gears without any of their drawbacks.**



Self-contained Single Reduction Gear: 140 H.P., 280-15 R.P.M.

Manufactured by THE POWER PLANT COMPANY, Limited,  
WEST DRAYTON, MIDDLESEX, ENG.

