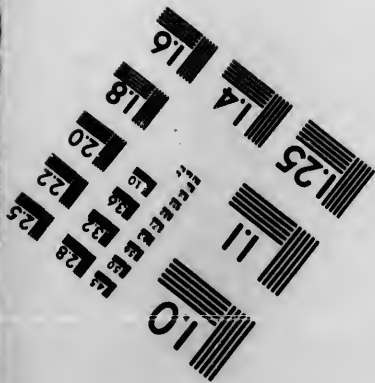
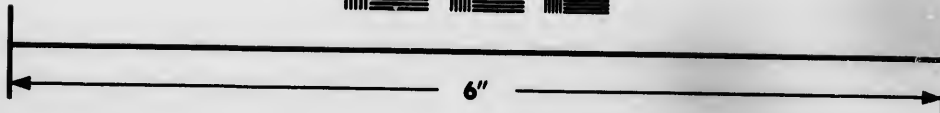
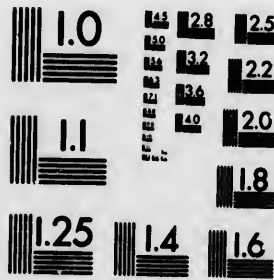


**IMAGE EVALUATION
TEST TARGET (MT-3)**



**Photographic
Sciences
Corporation**

23 WEST MAIN STREET
WEBSTER, N.Y. 14580
(716) 872-4503

**CIHM
Microfiche
Series
(Monographs)**

**ICMH
Collection de
microfiches
(monographies)**



Canadian Institute for Historical Microreproductions / Institut canadien de microreproductions historiques

© 1993

The copy filmed here has been reproduced thanks to the generosity of:

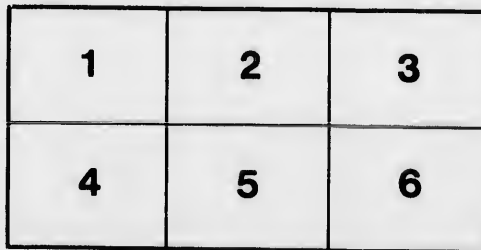
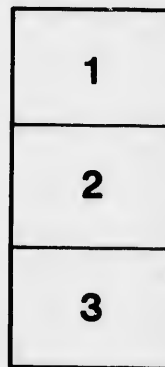
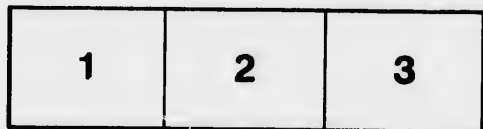
National Library of Canada

The images appearing here are the best quality possible considering the condition and legibility of the original copy and in keeping with the filming contract specifications.

Original copies in printed paper covers are filmed beginning with the front cover and ending on the last page with a printed or illustrated impression, or the back cover when appropriate. All other original copies are filmed beginning on the first page with a printed or illustrated impression, and ending on the last page with a printed or illustrated impression.

The last recorded frame on each microfiche shall contain the symbol \rightarrow (meaning "CONTINUED"), or the symbol ∇ (meaning "END"), whichever applies.

Maps, plates, charts, etc., may be filmed at different reduction ratios. Those too large to be entirely included in one exposure are filmed beginning in the upper left hand corner, left to right and top to bottom, as many frames as required. The following diagrams illustrate the method:



L'exemplaire filmé fut reproduit grâce à la générosité de:

Bibliothèque nationale du Canada

Les images suivantes ont été reproduites avec le plus grand soin, compte tenu de la condition et de la netteté de l'exemplaire filmé, et en conformité avec les conditions du contrat de filmage.

Les exemplaires originaux dont la couverture en papier est imprimée sont filmés en commençant par le premier plat et en terminant soit par la dernière page qui comporte une empreinte d'impression ou d'illustration, soit par le second plat, selon le cas. Tous les autres exemplaires originaux sont filmés en commençant par la première page qui comporte une empreinte d'impression ou d'illustration et en terminant par la dernière page qui comporte une telle empreinte.

Un des symboles suivants apparaît sur la dernière image de chaque microfiche, selon le cas: le symbole \rightarrow signifie "A SUIVRE", le symbole ∇ signifie "FIN".

Les cartes, planches, tableaux, etc., peuvent être filmés à des taux de réduction différents. Lorsque le document est trop grand pour être reproduit en un seul cliché, il est filmé à partir de l'angle supérieur gauche, de gauche à droite, et de haut en bas, en prenant le nombre d'images nécessaire. Les diagrammes suivants illustrent la méthode.

6pk
7

*6. P. Lease
758.*

PROSPECTUS

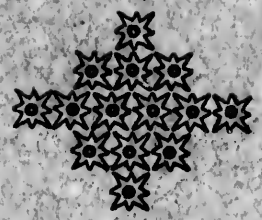
OF THE

*A
622.06*

R. E. LEE

GOLD MINING CO.,

LIMITED.



MINES and OFFICES :

ROSSLAND, BRITISH COLUMBIA.

1896.

R. E. LEE

Gold Mining Co., Ltd.

Registered under the laws of British Columbia.

OPERATING THE TWO CLAIMS

R. E. Lee and Maid of Erin.

The Combined area of the Claims being
about 80 acres.

Capital, - - . - \$2,000,000,

In Shares of One Dollar Each, issued as Fully Paid
and Non-Assessable, of which 500,000 have
been set aside for development.

BOARD OF DIRECTORS:

THE HON. JUDGE SPINKS, Vernon, B.C.,
President.

S. F. MCKINNON, Toronto,
Vice-President.

W. G. JOHNSON, London, Eng.

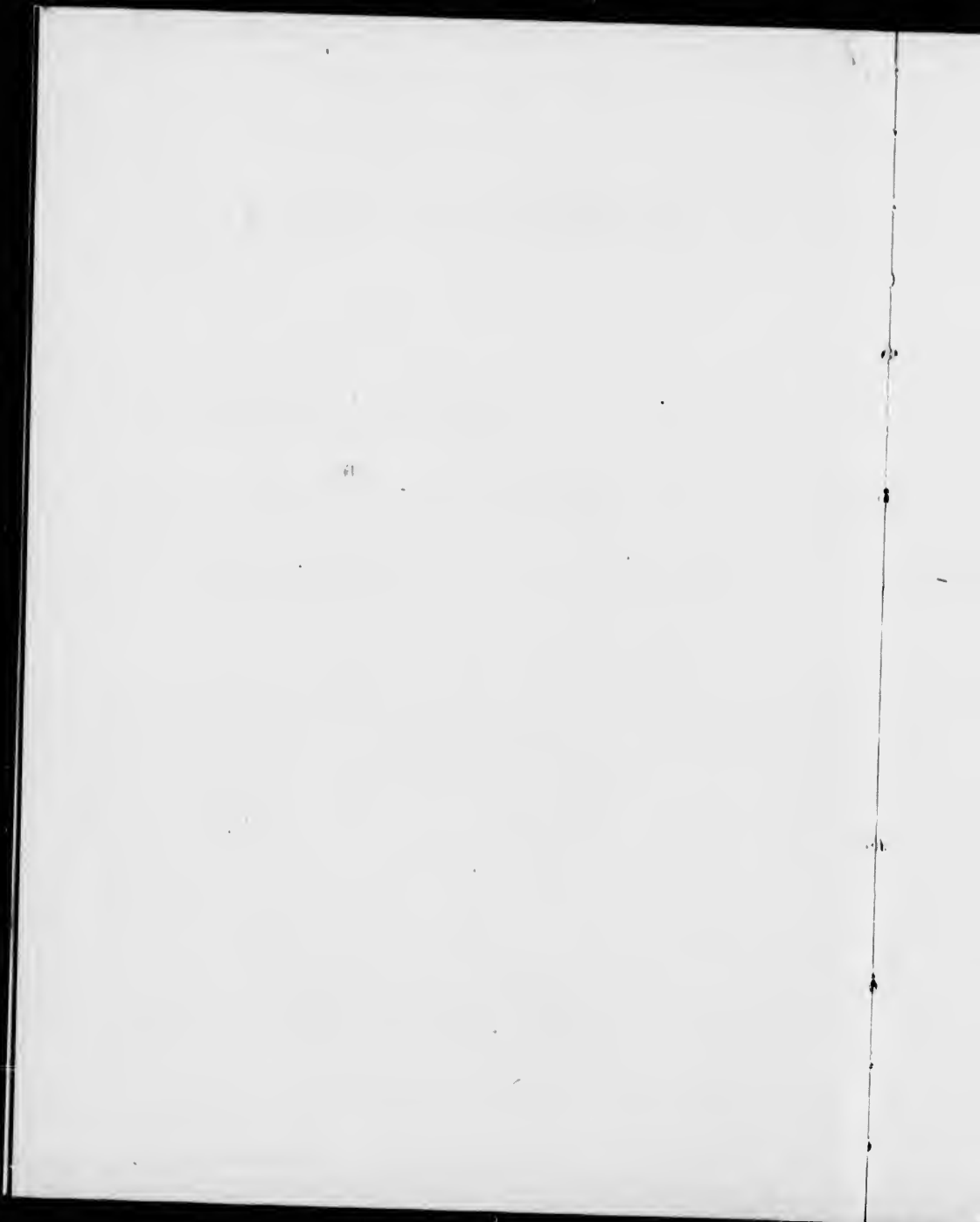
W. T. STUART, M.D., Toronto.

C. R. HAMILTON, Barrister, Rossland, B.C.

W. H. WALLBRIDGE, Barrister, Toronto.

Secretary-Treasurer:

D. M. LINNARD, Rossland, B.C.



SITUATION OF THE MINES.

The mines which now surround the Town of Rossland, in British Columbia, are situated on two zones known as the South Belt and the North Belt, which run a parallel course east and west. The North Belt is the best known, as there has been more development on it than on the South Belt, but the latter has come into active prominence during the present year on account of the richness of the finds having demonstrated its great mineral value.

The "R. E. Lee" and "Maid of Erin" claims are on the South Belt, and are two of the best known claims in the district. They were originally located on account of the strength of the vein which runs through them, and which can be traced to the Homestake in the one direction and to the Crown Point in the other. Besides this vein, which is well defined and runs through both properties, there

is another parallel vein which also passes through the claims.

The early prospectors preferred the South Belt to the North Belt, the first claim staked out was on the former, and opinion is rapidly forming that it is merely a question of increased development to make it fully equal in value to the latter.

DEVELOPMENT.

The work on the "R. E. Lee" comprises a shaft about 40 feet down on the south vein carrying from ten inches to two feet of a high grade of ore. There is an open cut on this vein of about twenty-five feet in length which shows the vein to be at least that width with ore intermingled through it. When the Kootenay & Western Railway was being constructed, this vein was cut by the track showing ledge matter for over 40 feet with seams of ore. On the main vein there is a surface cross cut of 35 feet and about 15 feet deep, all of which is

in ledge and vein matter and ore. A drift run on the ledge from the deepest part of this cut for 35 feet shows a continuous body of ore all the way. An experimental shipment of ore although taken from a position close to the surface, nevertheless paid more than all the expenses of mining, transportation and treatment. At this point the vein has been uncovered on the surface for about 100 feet, showing a strong well-defined out-crop of good ore and ledge matter. The same vein has been uncovered and proved about 800 feet east of these workings.

On the "Maid of Erin" there has been a working shaft sunk 63 feet, which is in ore all the way to the bottom. The shaft is about five feet by seven and the clear of the ledge is wider. At the bottom of this shaft there is two feet of clean ore. At the 50 foot level in this shaft a drift was run on the vein to the east which shows ore all the way. At one point three feet of clean

ore can be seen. This vein can be traced to the extreme east end of the claim. The work done is still insufficient to disclose the full size of the main vein as the hanging wall only has been found. This is also the case on the R. E. Lee.

These two claims have always been held in high esteem, and were in fact originally bonded for a larger sum than any claim on the South Belt. Both claims are mentioned with approval on page 30 of the Report on the Rossland District by Mr. William A. Carlyle, Mineralogist to the Government of British Columbia, and in every review of the camp made by mining experts the two claims have been spoken of in high terms.

Many quotations might be given from the local press noting the approval of those qualified by experience to give an opinion on the great value of the two claims.

MACHINERY.

The necessary machinery has been ordered to commence the active development of the mines which amongst other things includes a five drill compressor plant, hoisting and pumping machinery, with engine and boiler of sufficient size to supply ample power.

The houses are already erected for its reception and it is expected that the workings will be in active operation within the next few weeks.

TRANSPORTATION.

The Columbia & Western Railroad from Rossland to Trail passes over the claims, and the Red Mountain Railroad from Rossland to Northport will be open for traffic within a few weeks, which will ensure communication with all the railroad systems of the United States.

SHARES.

The Company enters into possession of the property free from any debt or liability of any kind. The Bonds were paid off on the 10th October.

Complete surveys have been made of the claims and application for a Certificate was made to the Government at Victoria, B. C., on the 7th September last which will shortly be received, when the properties will be held and operated under a Crown Grant from the Government.

The proceeds of the shares now offered for sale will be applied to the development of the mine. The rest of the shares are pooled, and will not be offered for sale until the development fund has become ample to place the mine on a shipping basis.

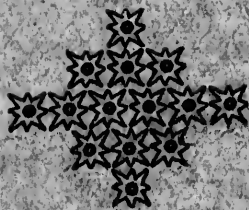
52

8535/18 C 8

PROSPECTUS

OF THE

R. E. LEE GOLD MINING CO., LIMITED.



MINES and OFFICES:
ROSSLAND, BRITISH COLUMBIA.

1896.

D.,

IBIA.

