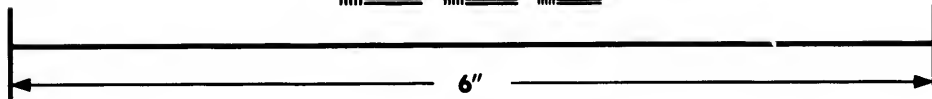
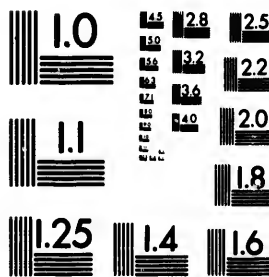


**IMAGE EVALUATION  
TEST TARGET (MT-3)**



**Photographic  
Sciences  
Corporation**

23 WEST MAIN STREET  
WEBSTER, N.Y. 14580  
(716) 872-4303

14  
18  
22  
25  
28  
32  
36  
40  
45

**CIHM/ICMH  
Microfiche  
Series.**

**CIHM/ICMH  
Collection de  
microfiches.**



**Canadian Institute for Historical Microreproductions / Institut canadien de microreproductions historiques**

10  
15  
20  
25  
30  
35  
40  
45

**© 1987**

Technical and Bibliographic Notes/Notes techniques et bibliographiques

The Institute has attempted to obtain the best original copy available for filming. Features of this copy which may be bibliographically unique, which may alter any of the images in the reproduction, or which may significantly change the usual method of filming, are checked below.

L'Institut a microfilmé le meilleur exemplaire qu'il lui a été possible de se procurer. Les détails de cet exemplaire qui sont peut-être uniques du point de vue bibliographique, qui peuvent modifier une image reproduite, ou qui peuvent exiger une modification dans la méthode normale de filmage sont indiqués ci-dessous.

- Coloured covers/  
Couverture de couleur
- Covers damaged/  
Couverture endommagée
- Covers restored and/or laminated/  
Couverture restaurée et/ou pelliculée
- Cover title missing/  
Le titre de couverture manque
- Coloured maps/  
Cartes géographiques en couleur
- Coloured ink (i.e. other than blue or black)/  
Encre de couleur (i.e. autre que bleue ou noire)
- Coloured plates and/or illustrations/  
Planches et/ou illustrations en couleur
- Bound with other material/  
Relié avec d'autres documents
- Tight binding may cause shadows or distortion  
along interior margin/  
La reliure serrée peut causer de l'ombre ou de la  
distorsion le long de la marge intérieure
- Blank leaves added during restoration may  
appear within the text. Whenever possible, these  
have been omitted from filming/  
Il se peut que certaines pages blanches ajoutées  
lors d'une restauration apparaissent dans le texte,  
mais, lorsque cela était possible, ces pages n'ont  
pas été filmées.
- Additional comments:/  
Commentaires supplémentaires:

[Printed Ephemera] 1 sheet [24] p.  
The sheet is ripped and some text has been lost.

- Coloured pages/  
Pages de couleur
- Pages damaged/  
Pages endommagées
- Pages restored and/or laminated/  
Pages restaurées et/ou pelliculées
- Pages discoloured, stained or foxed/  
Pages décolorées, tachetées ou piquées
- Pages detached/  
Pages détachées
- Showthrough/  
Transparence
- Quality of print varies/  
Qualité inégale de l'impression
- Includes supplementary material/  
Comprend du matériel supplémentaire
- Only edition available/  
Seule édition disponible
- Pages wholly or partially obscured by errata  
slips, tissues, etc., have been refilmed to  
ensure the best possible image/  
Les pages totalement ou partiellement  
obscurcies par un feuillet d'errata, une pelure,  
etc., ont été filmées à nouveau de façon à  
obtenir la meilleure image possible.

This item is filmed at the reduction ratio checked below/  
Ce document est filmé au taux de réduction indiqué ci-dessous.

10X	12X	14X	16X	18X	20X	22X	24X	26X	28X	30X	32X
<input type="checkbox"/>	<input type="checkbox"/>	<input type="checkbox"/>	<input type="checkbox"/>	<input type="checkbox"/>	<input type="checkbox"/>	<input type="checkbox"/>	<input checked="" type="checkbox"/>	<input type="checkbox"/>	<input type="checkbox"/>	<input type="checkbox"/>	<input type="checkbox"/>

The copy filmed here has been reproduced thanks to the generosity of:

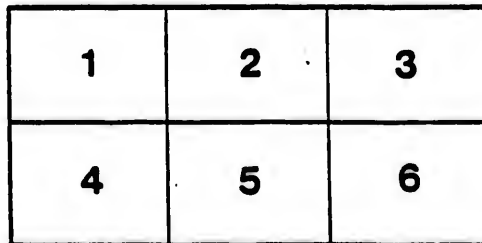
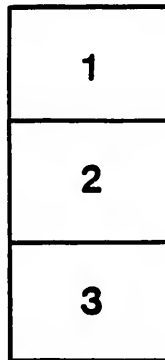
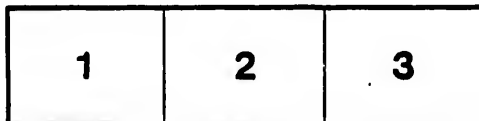
Archives of Ontario  
Toronto

The images appearing here are the best quality possible considering the condition and legibility of the original copy and in keeping with the filming contract specifications.

Original copies in printed paper covers are filmed beginning with the front cover and ending on the last page with a printed or illustrated impression, or the back cover when appropriate. All other original copies are filmed beginning on the first page with a printed or illustrated impression, and ending on the last page with a printed or illustrated impression.

The last recorded frame on each microfiche shall contain the symbol  $\rightarrow$  (meaning "CONTINUED"), or the symbol  $\nabla$  (meaning "END"), whichever applies.

Maps, plates, charts, etc., may be filmed at different reduction ratios. Those too large to be entirely included in one exposure are filmed beginning in the upper left hand corner, left to right and top to bottom, as many frames as required. The following diagrams illustrate the method:



L'exemplaire filmé fut reproduit grâce à la générosité de:

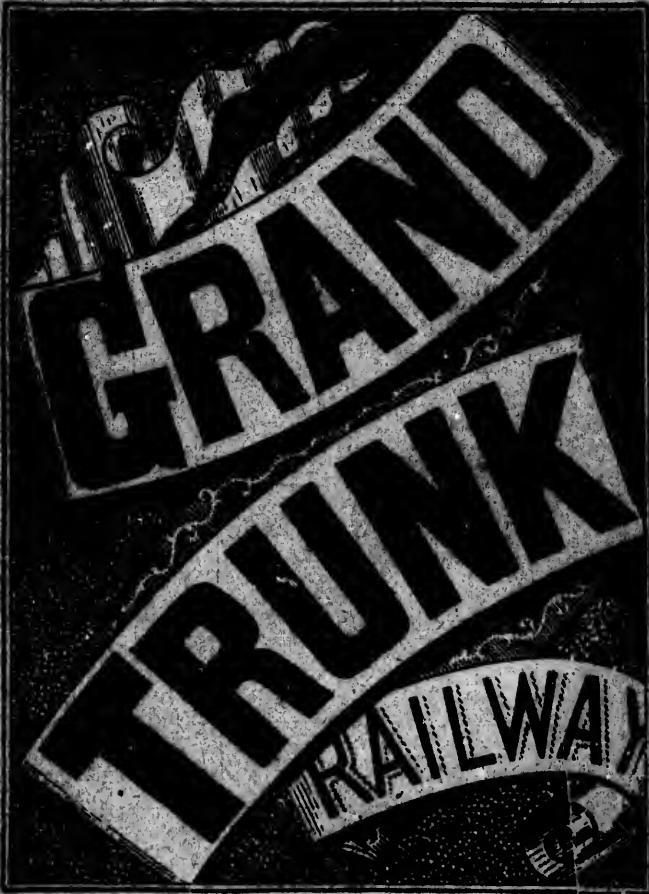
Archives of Ontario  
Toronto

Les images suivantes ont été reproduites avec le plus grand soin, compte tenu de la condition et de la netteté de l'exemplaire filmé, et en conformité avec les conditions du contrat de filmage.

Les exemplaires originaux dont la couverture en papier est imprimée sont filmés en commençant par le premier plat et en terminant soit par la dernière page qui comporte une empreinte d'impression ou d'illustration, soit par le second plat, selon le cas. Tous les autres exemplaires originaux sont filmés en commençant par la première page qui comporte une empreinte d'impression ou d'illustration et en terminant par la dernière page qui comporte une telle empreinte.

Un des symboles suivants apparaîtra sur la dernière image de chaque microfiche, selon le cas: le symbole  $\rightarrow$  signifie "A SUIVRE", le symbole  $\nabla$  signifie "FIN".

Les cartes, planches, tableaux, etc., peuvent être filmés à des taux de réduction différents. Lorsque le document est trop grand pour être reproduit en un seul cliché, il est filmé à partir de l'angle supérieur gauche, de gauche à droite, et de haut en bas, en prenant le nombre d'images nécessaire. Les diagrammes suivants illustrent la méthode.



**— THE —**  
**SHORTEST AND MOST DIRECT ROUTE**

**BETWEEN ALL POINTS**

**EAST AND WEST**

**MONTREAL,  
QUEBEC, PORTLAND**

**Boston, New York, St. Thomas, Buffalo, Hamilton, Niagara Falls, Kingston,  
London, Saratoga, Toronto, Guelph, Fort Erie, Detroit, Cedar Rapids,  
Warton, Southampton, Kingsford.**

**— CLOSE CONNECTIONS —**

**MADE WITH ALL PRINCIPAL RAILWAYS IN  
CANADA AND THE UNITED STATES.**

**The time of connecting railways shown herein is only for the  
formation of Passengers and is not guaranteed.**

**Gen. Man. L. J. SEABURY, Traffic Manager**

# Grand Trunk Railway

Avoid Transfers and Changes,

— AND BOOK —

THROUGH TO DESTINATION

— BY THE GREAT —

INTERNATIONAL ROUTE

— BETWEEN THE —

ATLANTIC AND PACIFIC.

Change required at Toronto for Through Passengers via G.T.R.

— THE GREAT —

Niagara Falls Route

— BETWEEN —

NEW YORK, BOSTON & CHICAGO.

Tickets to and from Montreal, Quebec, Portland, New Brunswick, Niagara Falls, Hamilton, St. Thomas, Kingston, Toronto, Sarnia, London, Goderich, Wiarton, Southamptondale, Detroit, Chicago, Milwaukee, Texas, Kansas, North-West Territories.

Connections made at Chicago, Detroit, Buffalo and Niagara Falls to various routes to the East and West, also, via Montreal and the Victoria Bridge for Eastern States and Lower Provinces. Connections via this route between Montreal and Chicago.

Running Pullman Palace Drawing Room Sleeping Cars through to Chicago.

Excursion Route during the Summer Season in connection with the Richelieu and Ontario Line of Steamers to Niagara Falls or Kingston down the far-famed St. Lawrence, passing the Victoria Bridge for Montreal, the Saguenay, White Mountains, Lakes Champlain and the Hudson River to New York.

Issue of Excursion Tickets for an extensive tour, to be had at all principal Ticket Agencies in the United States and Canada.

Connections to Manitoba and the North-West Territories via the Lakes, or via Chicago and Milwaukee, also for Michigan, Wisconsin, Minnesota, Illinois, Indiana, Kansas, Arkansas, Texas, and the Pacific Coast, will be the most pleasant and direct route. Every facility for through tickets at the most favorable fares.

— CHECKED THROUGH —

Passengers from Canada destined to points in the United States will be examined by the U. S. Customs Officers at Toronto, Stratford or London, as may be required, and all further trouble and annoyance at the









**BUFFALO and GODERICH.**

Express	Mixed	Mixed	STATIONS	Pass.	Express	Mixed	Mixed
7:00am	7:30am	7:30am	Goderich	7:00am	7:00am	7:00am	7:00am
7:10	7:40	7:40	Windsor	7:10	7:10	7:10	7:10
7:20	7:50	7:50	London	7:20	7:20	7:20	7:20
7:30	8:00	8:00	St. Catharines	7:30	7:30	7:30	7:30
7:40	8:10	8:10	Niagara Falls	7:40	7:40	7:40	7:40
7:50	8:20	8:20	Buffalo	7:50	7:50	7:50	7:50
8:00	8:30	8:30	Black Rock	8:00	8:00	8:00	8:00
8:10	8:40	8:40	Black Rock	8:10	8:10	8:10	8:10
8:20	8:50	8:50	Black Rock	8:20	8:20	8:20	8:20
8:30	9:00	9:00	Black Rock	8:30	8:30	8:30	8:30
8:40	9:10	9:10	Black Rock	8:40	8:40	8:40	8:40
8:50	9:20	9:20	Black Rock	8:50	8:50	8:50	8:50
9:00	9:30	9:30	Black Rock	9:00	9:00	9:00	9:00
9:10	9:40	9:40	Black Rock	9:10	9:10	9:10	9:10
9:20	9:50	9:50	Black Rock	9:20	9:20	9:20	9:20
9:30	10:00	10:00	Black Rock	9:30	9:30	9:30	9:30
9:40	10:10	10:10	Black Rock	9:40	9:40	9:40	9:40
9:50	10:20	10:20	Black Rock	9:50	9:50	9:50	9:50

**GOING EAST.**

Chicago and Detroit to Toronto and Montreal.

Express	Express	Express	STATIONS	Express	Express	Express	Express
7:00am	7:00am	7:00am	Chicago	7:00am	7:00am	7:00am	7:00am
7:10	7:10	7:10	Detroit	7:10	7:10	7:10	7:10
7:20	7:20	7:20	St. Catharines	7:20	7:20	7:20	7:20
7:30	7:30	7:30	Black Rock	7:30	7:30	7:30	7:30
7:40	7:40	7:40	Black Rock	7:40	7:40	7:40	7:40
7:50	7:50	7:50	Black Rock	7:50	7:50	7:50	7:50
8:00	8:00	8:00	Black Rock	8:00	8:00	8:00	8:00
8:10	8:10	8:10	Black Rock	8:10	8:10	8:10	8:10
8:20	8:20	8:20	Black Rock	8:20	8:20	8:20	8:20
8:30	8:30	8:30	Black Rock	8:30	8:30	8:30	8:30
8:40	8:40	8:40	Black Rock	8:40	8:40	8:40	8:40
8:50	8:50	8:50	Black Rock	8:50	8:50	8:50	8:50
9:00	9:00	9:00	Black Rock	9:00	9:00	9:00	9:00
9:10	9:10	9:10	Black Rock	9:10	9:10	9:10	9:10
9:20	9:20	9:20	Black Rock	9:20	9:20	9:20	9:20
9:30	9:30	9:30	Black Rock	9:30	9:30	9:30	9:30
9:40	9:40	9:40	Black Rock	9:40	9:40	9:40	9:40
9:50	9:50	9:50	Black Rock	9:50	9:50	9:50	9:50

**BAY AND LAKE ERIE DIVISION.**

Express	Express	Mixed	STATIONS	Express	Express	Express	Express
6:00am	6:00am	6:00am	Oran	6:00am	6:00am	6:00am	6:00am
6:10	6:10	6:10	Oran	6:10	6:10	6:10	6:10
6:20	6:20	6:20	Oran	6:20	6:20	6:20	6:20
6:30	6:30	6:30	Oran	6:30	6:30	6:30	6:30
6:40	6:40	6:40	Oran	6:40	6:40	6:40	6:40
6:50	6:50	6:50	Oran	6:50	6:50	6:50	6:50
7:00	7:00	7:00	Oran	7:00	7:00	7:00	7:00
7:10	7:10	7:10	Oran	7:10	7:10	7:10	7:10
7:20	7:20	7:20	Oran	7:20	7:20	7:20	7:20
7:30	7:30	7:30	Oran	7:30	7:30	7:30	7:30
7:40	7:40	7:40	Oran	7:40	7:40	7:40	7:40
7:50	7:50	7:50	Oran	7:50	7:50	7:50	7:50
8:00	8:00	8:00	Oran	8:00	8:00	8:00	8:00
8:10	8:10	8:10	Oran	8:10	8:10	8:10	8:10
8:20	8:20	8:20	Oran	8:20	8:20	8:20	8:20
8:30	8:30	8:30	Oran	8:30	8:30	8:30	8:30
8:40	8:40	8:40	Oran	8:40	8:40	8:40	8:40
8:50	8:50	8:50	Oran	8:50	8:50	8:50	8:50
9:00	9:00	9:00	Oran	9:00	9:00	9:00	9:00
9:10	9:10	9:10	Oran	9:10	9:10	9:10	9:10
9:20	9:20	9:20	Oran	9:20	9:20	9:20	9:20
9:30	9:30	9:30	Oran	9:30	9:30	9:30	9:30
9:40	9:40	9:40	Oran	9:40	9:40	9:40	9:40
9:50	9:50	9:50	Oran	9:50	9:50	9:50	9:50

**ARTHUR AND THREE RIVERS BRANCH.**

Express	Express	Mixed	STATIONS	Express	Express	Express	Express
6:00am	6:00am	6:00am	Arthur	6:00am	6:00am	6:00am	6:00am
6:10	6:10	6:10	Arthur	6:10	6:10	6:10	6:10
6:20	6:20	6:20	Arthur	6:20	6:20	6:20	6:20
6:30	6:30	6:30	Arthur	6:30	6:30	6:30	6:30
6:40	6:40	6:40	Arthur	6:40	6:40	6:40	6:40
6:50	6:50	6:50	Arthur	6:50	6:50	6:50	6:50
7:00	7:00	7:00	Arthur	7:00	7:00	7:00	7:00
7:10	7:10	7:10	Arthur	7:10	7:10	7:10	7:10
7:20	7:20	7:20	Arthur	7:20	7:20	7:20	7:20
7:30	7:30	7:30	Arthur	7:30	7:30	7:30	7:30
7:40	7:40	7:40	Arthur	7:40	7:40	7:40	7:40
7:50	7:50	7:50	Arthur	7:50	7:50	7:50	7:50
8:00	8:00	8:00	Arthur	8:00	8:00	8:00	8:00
8:10	8:10	8:10	Arthur	8:10	8:10	8:10	8:10
8:20	8:20	8:20	Arthur	8:20	8:20	8:20	8:20
8:30	8:30	8:30	Arthur	8:30	8:30	8:30	8:30
8:40	8:40	8:40	Arthur	8:40	8:40	8:40	8:40
8:50	8:50	8:50	Arthur	8:50	8:50	8:50	8:50
9:00	9:00	9:00	Arthur	9:00	9:00	9:00	9:00
9:10	9:10	9:10	Arthur	9:10	9:10	9:10	9:10
9:20	9:20	9:20	Arthur	9:20	9:20	9:20	9:20
9:30	9:30	9:30	Arthur	9:30	9:30	9:30	9:30
9:40	9:40	9:40	Arthur	9:40	9:40	9:40	9:40
9:50	9:50	9:50	Arthur	9:50	9:50	9:50	9:50

**MONMOUTH AND QUEBEC.**

Express	Express	Mixed	STATIONS	Express	Express	Express	Express
6:00am	6:00am	6:00am	Monmouth	6:00am	6:00am	6:00am	6:00am
6:10	6:10	6:10	Monmouth	6:10	6:10	6:10	6:10
6:20	6:20	6:20	Monmouth	6:20	6:20	6:20	6:20
6:30	6:30	6:30	Monmouth	6:30	6:30	6:30	6:30
6:40	6:40	6:40	Monmouth	6:40	6:40	6:40	6:40
6:50	6:50	6:50	Monmouth	6:50	6:50	6:50	6:50
7:00	7:00	7:00	Monmouth	7:00	7:00	7:00	7:00
7:10	7:10	7:10	Monmouth	7:10	7:10	7:10	7:10
7:20	7:20	7:20	Monmouth	7:20	7:20	7:20	7:20
7:30	7:30	7:30	Monmouth	7:30	7:30	7:30	7:30
7:40	7:40	7:40	Monmouth	7:40	7:40	7:40	7:40
7:50	7:50	7:50	Monmouth	7:50	7:50	7:50	7:50
8:00	8:00	8:00	Monmouth	8:00	8:00	8:00	8:00
8:10	8:10	8:10	Monmouth	8:10	8:10	8:10	8:10
8:20	8:20	8:20	Monmouth	8:20	8:20	8:20	8:20
8:30	8:30	8:30	Monmouth	8:30	8:30	8:30	8:30
8:40	8:40	8:40	Monmouth	8:40	8:40	8:40	8:40
8:50	8:50	8:50	Monmouth	8:50	8:50	8:50	8:50
9:00	9:00	9:00	Monmouth	9:00	9:00	9:00	9:00
9:10	9:10	9:10	Monmouth	9:10	9:10	9:10	9:10
9:20	9:20	9:20	Monmouth	9:20	9:20	9:20	9:20
9:30	9:30	9:30	Monmouth	9:30	9:30	9:30	9:30
9:40	9:40	9:40	Monmouth	9:40	9:40	9:40	9:40
9:50	9:50	9:50	Monmouth	9:50	9:50	9:50	9:50

**ARTHUR AND THREE RIVERS BRANCH.**

Express	Express	Mixed	STATIONS	Express	Express	Express	Express
6:00am	6:00am	6:00am	Arthur	6:00am	6:00am	6:00am	6:00am
6:10	6:10	6:10	Arthur	6:10	6:10	6:10	6:10
6:20	6:20	6:20	Arthur	6:20	6:20	6:20	6:20
6:30	6:30	6:30	Arthur	6:30	6:30	6:30	6:30
6:40	6:40	6:40	Arthur	6:40	6:40	6:40	6:40
6:50	6:50	6:50	Arthur	6:50	6:50	6:50	6:50
7:00	7:00	7:00	Arthur	7:00	7:00	7:00	7:00
7:10	7:10	7:10	Arthur	7:10	7:10	7:10	7:10
7:20	7:20	7:20	Arthur	7:20	7:20	7:20	7:20
7:30	7:30	7:30	Arthur	7:30	7:30	7:30	7:30
7:40	7:40	7:40	Arthur	7:40	7:40	7:40	7:40
7:50	7:50	7:50	Arthur	7:50	7:50	7:50	7:50
8:00	8:00	8:00	Arthur	8:00	8:00	8:00	8:00
8:10	8:10	8:10	Arthur	8:10	8:10	8:10	8:10
8:20	8:20	8:20	Arthur	8:20	8:20	8:20	8:20
8:30	8:30	8:30	Arthur	8:30	8:30	8:30	8:30
8:40	8:40	8:40	Arthur	8:40	8:40	8:40	8:40
8:50	8:50	8:50	Arthur	8:50	8:50	8:50	8:50
9:00	9:00	9:00	Arthur	9:00	9:00	9:00	9:00
9:10	9:10	9:10	Arthur	9:10	9:10	9:10	9:10
9:20	9:20	9:20	Arthur	9:20	9:20	9:20	9:20
9:30	9:30	9:30	Arthur	9:30	9:30	9:30	9:30
9:40	9:40	9:40	Arthur	9:40	9:40	9:40	9:40
9:50	9:50	9:50	Arthur	9:50	9:50	9:50	9:50

Notes (A) Run daily to Point Levis except Monday.  
 (







Hall's Siding	1.00	5.41	6.18
Methu's Mills	1.17	6.04	6.25
Appleton	1.22	6.18	6.20
Oran Road	1.40	6.35	6.30
Chandlers	1.42	6.35	6.30
Chandlers Jct.	1.42	6.35	6.30
Chandlers Curve	1.42	6.35	6.30
Point Levi	2.00	7.00	7.00
St. Charles	2.00	7.00	7.00
St. John	2.00	7.00	7.00
HALIFAX	12.00		

STATIONS		Mixed	Mixed
Three Rivers	1.25	1.25	1.25
De Groot's	1.30	1.30	1.30
St. George	1.35	1.35	1.35
St. Colistin	1.40	1.40	1.40
St. Anton	1.45	1.45	1.45
St. Kallala	1.50	1.50	1.50
Black River	1.55	1.55	1.55
Walker's Outing	2.00	2.00	2.00
Archibald's	2.05	2.05	2.05

1.00	2.04	3.08	4.12	5.16	6.20	7.24	8.28	9.32	10.36	11.40	12.44
1.00	2.04	3.08	4.12	5.16	6.20	7.24	8.28	9.32	10.36	11.40	12.44
1.00	2.04	3.08	4.12	5.16	6.20	7.24	8.28	9.32	10.36	11.40	12.44

Nov (c) Runs daily to Point Levi except Monday  
 Nov (B) Run Saturdays only. (A) Run daily excepting Sat. & Sundays

**TO BOSTON AND NEW YORK.**

ROUSE'S POINT		ST. JOHNS TO MONTREAL	
Pass.	Par.	Pass.	Par.
New York, via Springfield	1.00	1.00	1.00
Do via West Shore	1.00	1.00	1.00
Boston, via Filch's R.R.	1.00	1.00	1.00
Boston, via B. & N.	1.00	1.00	1.00
Albany via O. & N.	1.00	1.00	1.00
Albany via C. & N.	1.00	1.00	1.00
Montreal	1.00	1.00	1.00

1.00	2.04	3.08	4.12	5.16	6.20	7.24	8.28	9.32	10.36	11.40	12.44
1.00	2.04	3.08	4.12	5.16	6.20	7.24	8.28	9.32	10.36	11.40	12.44
1.00	2.04	3.08	4.12	5.16	6.20	7.24	8.28	9.32	10.36	11.40	12.44

No connection on Sunday.

**AND CHAMPLAIN JUNCTION DIVISION.**

STATIONS		SUBURBAN	
Pass.	Par.	Pass.	Par.
Providence	1.00	1.00	1.00
Montreal	1.00	1.00	1.00
St. Michel	1.00	1.00	1.00
St. Jean	1.00	1.00	1.00
St. Agnes	1.00	1.00	1.00
St. Laurent	1.00	1.00	1.00
St. Charles	1.00	1.00	1.00
St. John	1.00	1.00	1.00
St. Louis	1.00	1.00	1.00
St. Paul	1.00	1.00	1.00
St. Peter	1.00	1.00	1.00
St. James	1.00	1.00	1.00
St. George	1.00	1.00	1.00
St. Andrew	1.00	1.00	1.00
St. Nicholas	1.00	1.00	1.00
St. Basil	1.00	1.00	1.00
St. Constant	1.00	1.00	1.00
St. Laurent	1.00	1.00	1.00
St. Charles	1.00	1.00	1.00
St. John	1.00	1.00	1.00
St. Louis	1.00	1.00	1.00
St. Paul	1.00	1.00	1.00
St. Peter	1.00	1.00	1.00
St. James	1.00	1.00	1.00
St. George	1.00	1.00	1.00
St. Andrew	1.00	1.00	1.00
St. Nicholas	1.00	1.00	1.00
St. Basil	1.00	1.00	1.00

1.00	2.04	3.08	4.12	5.16	6.20	7.24	8.28	9.32	10.36	11.40	12.44
1.00	2.04	3.08	4.12	5.16	6.20	7.24	8.28	9.32	10.36	11.40	12.44
1.00	2.04	3.08	4.12	5.16	6.20	7.24	8.28	9.32	10.36	11.40	12.44

**Montreal to Lachine and St. Laurent.**

LACHINE TRAINS		ST. LAURENT TRAINS	
A.M.	P.M.	A.M.	P.M.
6.40	7.45	7.00	8.00
7.05	8.10	8.25	9.25

**St. Laurent and Lachine to Montreal.**

LACHINE TRAINS		ST. LAURENT TRAINS	
A.M.	P.M.	A.M.	P.M.
7.05	8.10	8.25	9.25
8.30	9.35	10.00	11.00

From Montreal, St. Henri (1.75 miles), Jacques Cartier (7.45 m.), Cote St. Paul (2.25 m.), Covent (7.07 m.), when there are passengers for or from.

On Montreal and Lachine on Wednesdays and Saturdays, leaving Montreal at 11.15 p.m. Connections but not Parallels Tickets will be accepted on these trains. 25c. Free passes.

Under permission, QUEBEC AND PORTLAND-Ocean Steamers connect with Grand Trunk and PORTLAND-International Steamships for St. John, N.B., and intermediate ports, leave Montreal-Maine Steamship Company Steamers. One of the fine Steamers "FRANCONIA" Monday and Saturday at 6 p.m. PORTLAND-Portland Steam Packet Company-The Steamers Boston every evening, (Sundays excepted), at 7 o'clock.

metallicity in the arrival or departure of Trains, depending upon connections with other Lines. Trains are at all times subject to be cancelled.

1.00	2.04	3.08	4.12	5.16	6.20	7.24	8.28	9.32	10.36	11.40	12.44
1.00	2.04	3.08	4.12	5.16	6.20	7.24	8.28	9.32	10.36	11.40	12.44
1.00	2.04	3.08	4.12	5.16	6.20	7.24	8.28	9.32	10.36	11.40	12.44

