













capacity for hard coal was 800 tons, but half of what it is now. The supply is coming in and during navigation we expect to get in 600,000 tons of soft coal and our full capacity of hard coal is 1,000 tons. We have on hand 200,000 tons of soft coal and 40,000 tons of hard coal.

"I have not forgotten," he said. "I have not forgotten that it was the shutting down of the mines out west that caused this. We are hoping that this time the points will lay in a support. Our capacity for handling 6,000 tons of soft per day and 1,000 tons of hard."

**Adequate Supplies.**  
Canadian Northern coal docks at Arthur have an unloading capacity of 600,000 tons during navigation. The rate of 500 tons per hour, storage capacity of 100,000 tons of coal and 25,000 tons of hard coal, and the first of the year has been running to capacity.

### REGULATIONS OF CANADIAN NORTH-WEST HOMESTEAD REGULATIONS.

even numbered section of Do-Lands in Manitoba or the West Provinces, excepting 8 not reserved, may be homesteaded by any person the sole head of a family, or male over 18 years of age, who has been in Canada for one year immediately preceding the date of application. Entry by proxy may be made on certain conditions. Entry by proxy may be made on certain conditions. Entry by proxy may be made on certain conditions.

The surrounding district. The town lies in the centre of a rich tract of country admirably adapted for wheat growing and mixed farming. The Stettler district, like many others in the West, is undergoing a transformation.

Water and Fuel. Water is everywhere abundant and obtained generally by sinking shallow wells. The supply is sufficient for all the demands of the house or live stock. A great many farmers and ranchers are furthermore the happy possessors of artesian springs, which do not freeze up in the coldest weather.

Export Cattle, Grass Fed and Grass Fattened on a Stettler Ranch.

Stettler, for its size, is the youngest town in Alberta. On Christmas day, 1896, the population of the area of land upon which the present town stands was 7 souls. Today the town has a population of 400, 80 places of business and promises to be one of the most important trade centres of central Alberta.

Stettler is the present terminus of the C.P.R. branch east from Lacombe. It is 50 miles from Lacombe and has a population of 400, 80 places of business and promises to be one of the most important trade centres of central Alberta.

Stettler is the present terminus of the C.P.R. branch east from Lacombe. It is 50 miles from Lacombe and has a population of 400, 80 places of business and promises to be one of the most important trade centres of central Alberta.

# Stettler--The Home of No. 1 Hard

The Enterprising Town which is the Centre of the Finest Wheat Growing District in Alberta. What it can Boast of. One of the Best of the Young Towns which have been Established Within Last Two Years.

Stettler, for its size, is the youngest town in Alberta. On Christmas day, 1896, the population of the area of land upon which the present town stands was 7 souls. Today the town has a population of 400, 80 places of business and promises to be one of the most important trade centres of central Alberta.

Stettler is the present terminus of the C.P.R. branch east from Lacombe. It is 50 miles from Lacombe and has a population of 400, 80 places of business and promises to be one of the most important trade centres of central Alberta.

Stettler is the present terminus of the C.P.R. branch east from Lacombe. It is 50 miles from Lacombe and has a population of 400, 80 places of business and promises to be one of the most important trade centres of central Alberta.

Stettler is the present terminus of the C.P.R. branch east from Lacombe. It is 50 miles from Lacombe and has a population of 400, 80 places of business and promises to be one of the most important trade centres of central Alberta.

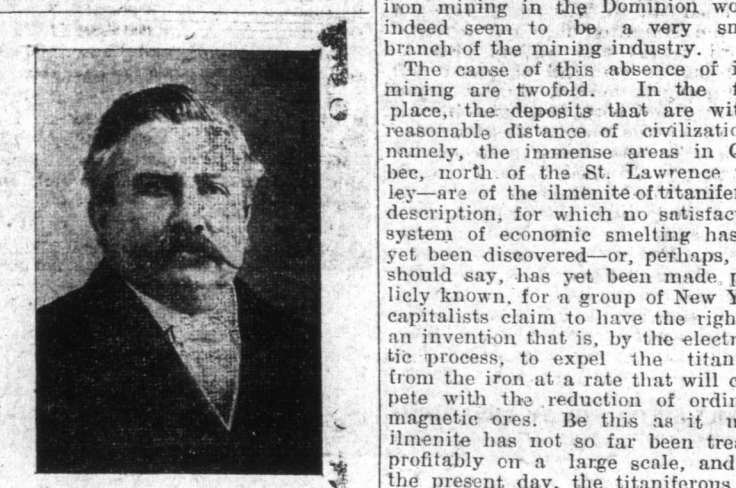
Stettler is the present terminus of the C.P.R. branch east from Lacombe. It is 50 miles from Lacombe and has a population of 400, 80 places of business and promises to be one of the most important trade centres of central Alberta.

Stettler is the present terminus of the C.P.R. branch east from Lacombe. It is 50 miles from Lacombe and has a population of 400, 80 places of business and promises to be one of the most important trade centres of central Alberta.

Stettler is the present terminus of the C.P.R. branch east from Lacombe. It is 50 miles from Lacombe and has a population of 400, 80 places of business and promises to be one of the most important trade centres of central Alberta.

Stettler is the present terminus of the C.P.R. branch east from Lacombe. It is 50 miles from Lacombe and has a population of 400, 80 places of business and promises to be one of the most important trade centres of central Alberta.

Stettler is the present terminus of the C.P.R. branch east from Lacombe. It is 50 miles from Lacombe and has a population of 400, 80 places of business and promises to be one of the most important trade centres of central Alberta.



Carl Stettler, the Founder of Stettler.

Stettler is the present terminus of the C.P.R. branch east from Lacombe. It is 50 miles from Lacombe and has a population of 400, 80 places of business and promises to be one of the most important trade centres of central Alberta.

Stettler is the present terminus of the C.P.R. branch east from Lacombe. It is 50 miles from Lacombe and has a population of 400, 80 places of business and promises to be one of the most important trade centres of central Alberta.

Stettler is the present terminus of the C.P.R. branch east from Lacombe. It is 50 miles from Lacombe and has a population of 400, 80 places of business and promises to be one of the most important trade centres of central Alberta.

Stettler is the present terminus of the C.P.R. branch east from Lacombe. It is 50 miles from Lacombe and has a population of 400, 80 places of business and promises to be one of the most important trade centres of central Alberta.

Stettler is the present terminus of the C.P.R. branch east from Lacombe. It is 50 miles from Lacombe and has a population of 400, 80 places of business and promises to be one of the most important trade centres of central Alberta.

Stettler is the present terminus of the C.P.R. branch east from Lacombe. It is 50 miles from Lacombe and has a population of 400, 80 places of business and promises to be one of the most important trade centres of central Alberta.

Stettler is the present terminus of the C.P.R. branch east from Lacombe. It is 50 miles from Lacombe and has a population of 400, 80 places of business and promises to be one of the most important trade centres of central Alberta.

Stettler is the present terminus of the C.P.R. branch east from Lacombe. It is 50 miles from Lacombe and has a population of 400, 80 places of business and promises to be one of the most important trade centres of central Alberta.

Stettler is the present terminus of the C.P.R. branch east from Lacombe. It is 50 miles from Lacombe and has a population of 400, 80 places of business and promises to be one of the most important trade centres of central Alberta.

Stettler is the present terminus of the C.P.R. branch east from Lacombe. It is 50 miles from Lacombe and has a population of 400, 80 places of business and promises to be one of the most important trade centres of central Alberta.

Stettler is the present terminus of the C.P.R. branch east from Lacombe. It is 50 miles from Lacombe and has a population of 400, 80 places of business and promises to be one of the most important trade centres of central Alberta.

Stettler is the present terminus of the C.P.R. branch east from Lacombe. It is 50 miles from Lacombe and has a population of 400, 80 places of business and promises to be one of the most important trade centres of central Alberta.

Stettler is the present terminus of the C.P.R. branch east from Lacombe. It is 50 miles from Lacombe and has a population of 400, 80 places of business and promises to be one of the most important trade centres of central Alberta.

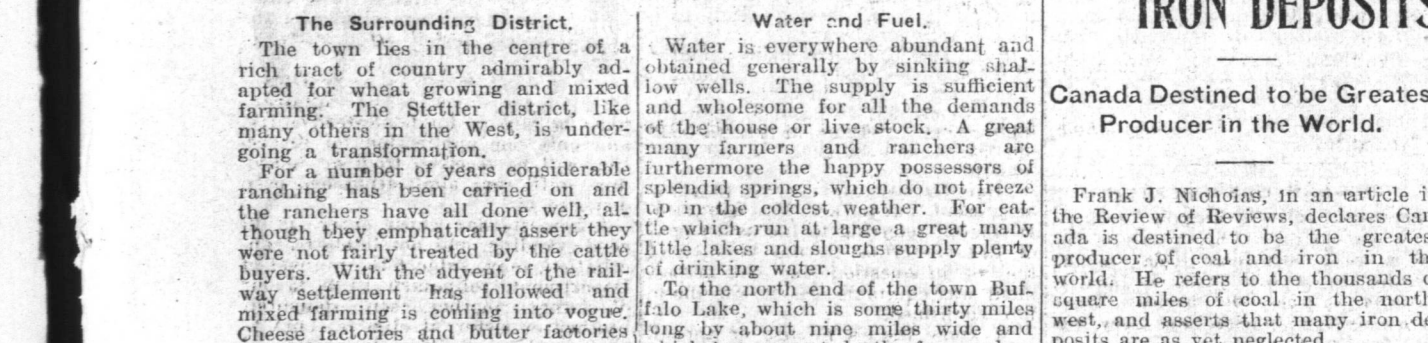
Stettler is the present terminus of the C.P.R. branch east from Lacombe. It is 50 miles from Lacombe and has a population of 400, 80 places of business and promises to be one of the most important trade centres of central Alberta.

Stettler is the present terminus of the C.P.R. branch east from Lacombe. It is 50 miles from Lacombe and has a population of 400, 80 places of business and promises to be one of the most important trade centres of central Alberta.

Stettler is the present terminus of the C.P.R. branch east from Lacombe. It is 50 miles from Lacombe and has a population of 400, 80 places of business and promises to be one of the most important trade centres of central Alberta.



Export Cattle, Grass Fed and Grass Fattened on a Stettler Ranch.



Horse Ranch Near Stettler.

## OUR COAL AND IRON DEPOSITS

Canada Destined to be Greatest Producer in the World.

Frank J. Nicholson, in an article in the Review of Reviews, declares Canada is destined to be the greatest producer of coal and iron in the world. He refers to the thousands of square miles of coal in the north-west, and asserts that many iron deposits are yet unexplored.

Stettler is the present terminus of the C.P.R. branch east from Lacombe. It is 50 miles from Lacombe and has a population of 400, 80 places of business and promises to be one of the most important trade centres of central Alberta.

Stettler is the present terminus of the C.P.R. branch east from Lacombe. It is 50 miles from Lacombe and has a population of 400, 80 places of business and promises to be one of the most important trade centres of central Alberta.

Stettler is the present terminus of the C.P.R. branch east from Lacombe. It is 50 miles from Lacombe and has a population of 400, 80 places of business and promises to be one of the most important trade centres of central Alberta.

Stettler is the present terminus of the C.P.R. branch east from Lacombe. It is 50 miles from Lacombe and has a population of 400, 80 places of business and promises to be one of the most important trade centres of central Alberta.

Stettler is the present terminus of the C.P.R. branch east from Lacombe. It is 50 miles from Lacombe and has a population of 400, 80 places of business and promises to be one of the most important trade centres of central Alberta.

## HAS TEMPLE OF KING IKHNATON

Professor Breasted's Discovery Shows that Egypt was Civilized in 1400 B.C.

Chicago, July 25--After years of search among the buried treasures of the Egyptian king, Professor James H. Breasted, of the University of Chicago, has discovered in the ruins of a buried temple of Ikhnaton, the great-est of the Pharaohs. The professor suggested where, scientists, centuries have failed by bringing to light the only relics of the Egyptian monarch who introduced monotheism into his kingdom.

Stettler is the present terminus of the C.P.R. branch east from Lacombe. It is 50 miles from Lacombe and has a population of 400, 80 places of business and promises to be one of the most important trade centres of central Alberta.

Stettler is the present terminus of the C.P.R. branch east from Lacombe. It is 50 miles from Lacombe and has a population of 400, 80 places of business and promises to be one of the most important trade centres of central Alberta.

Stettler is the present terminus of the C.P.R. branch east from Lacombe. It is 50 miles from Lacombe and has a population of 400, 80 places of business and promises to be one of the most important trade centres of central Alberta.

Stettler is the present terminus of the C.P.R. branch east from Lacombe. It is 50 miles from Lacombe and has a population of 400, 80 places of business and promises to be one of the most important trade centres of central Alberta.

Stettler is the present terminus of the C.P.R. branch east from Lacombe. It is 50 miles from Lacombe and has a population of 400, 80 places of business and promises to be one of the most important trade centres of central Alberta.

An Evening Pastime on Stettler Lake.

Fire Brigade, Stettler.

Homesteaders Starting Out to Hunt Land in Stettler District.

**"Sovereign" Shells**

Best for trap or game. Loaded under the direct supervision of Mr. Alex. Jey one of Canada's most expert trap shots.

The powder--"Nebel's Empire Dull Smokeless" gives maximum recoil penetration with minimum recoil.

Gives Reason for Opinion.

"If hell were any part of the earth or situated in it, the biblical promise that the curse placed upon the ground at the time of the expulsion of Adam from Eden could not be carried out except by the creation of a new hell or the removal of the old one to a new location."

That in substance is one of the chief reasons why Rev. Zed Hesel Copp, whose ancestors are buried on Copp's Hill in Boston, believes hell is in the sun.

"According to Revelations," said Rev. Zed Copp, "when the curse is removed from the ground there will be no longer need for the sun, the moon or the stars. The capital of the new world, the new Jerusalem, will be lighted by the glory of God. The sun will have disappeared."

"By the process of elimination the uselessness of the sun except as a place of punishment for transgressors of the divine law is shown much more clearly than any proposition that hell is in or over the earth."

**Small Company Hears Theory.**

Mr. Copp laid down these propositions to a small congregation in Bethany Chapel, a mission in the "red city" district of Washington, and thereby acquired a notoriety from which he does not shrink, because he believes he has come nearer answering the ungodly scold's inquiry, "Where is hell?" than any other man claiming to be an orthodox Christian.

Bethany Chapel is a part of the New York Avenue Presbyterian Church establishment in Washington. Associate Justice Harlan of the Supreme Court

## HADES IS IN SUN ALL RIGHT

Washington Preacher Finds Reasons for Believing in this Theory.

Washington, July 26--Where is Hades? The question has been asked often--and answered variously.

The variety of the answers made an inquiring world begin to think the question was unanswerable. But now, out of the silence, it is answered once again this time literally, definitely, confidently, dogmatically.

A minister at the American national capital proclaims his discovery of hell. He points triumphantly to it, displayed in all its vast expanse of smoldering flames, so radiant as to illuminate the face of the earth, so vast in extent as to hold all the sinners who have departed from earth through a million years.

Gives Reason for Opinion.

"If hell were any part of the earth or situated in it, the biblical promise that the curse placed upon the ground at the time of the expulsion of Adam from Eden could not be carried out except by the creation of a new hell or the removal of the old one to a new location."

That in substance is one of the chief reasons why Rev. Zed Hesel Copp, whose ancestors are buried on Copp's Hill in Boston, believes hell is in the sun.

"According to Revelations," said Rev. Zed Copp, "when the curse is removed from the ground there will be no longer need for the sun, the moon or the stars. The capital of the new world, the new Jerusalem, will be lighted by the glory of God. The sun will have disappeared."

"By the process of elimination the uselessness of the sun except as a place of punishment for transgressors of the divine law is shown much more clearly than any proposition that hell is in or over the earth."

**Small Company Hears Theory.**

Mr. Copp laid down these propositions to a small congregation in Bethany Chapel, a mission in the "red city" district of Washington, and thereby acquired a notoriety from which he does not shrink, because he believes he has come nearer answering the ungodly scold's inquiry, "Where is hell?" than any other man claiming to be an orthodox Christian.

Bethany Chapel is a part of the New York Avenue Presbyterian Church establishment in Washington. Associate Justice Harlan of the Supreme Court



Homesteaders Starting Out to Hunt Land in Stettler District.

