

**CIHM
Microfiche
Series
(Monographs)**

**ICMH
Collection de
microfiches
(monographies)**



Canadian Institute for Historical Microreproductions / Institut canadien de microreproductions historiques

© 1996

Technical and Bibliographic Notes / Notes technique et bibliographiques

The Institute has attempted to obtain the best original copy available for filming. Features of this copy which may be bibliographically unique, which may alter any of the images in the reproduction, or which may significantly change the usual method of filming are checked below.

- Coloured covers / Couverture de couleur
- Covers damaged / Couverture endommagée
- Covers restored and/or laminated / Couverture restaurée et/ou pelliculée
- Cover title missing / Le titre de couverture manque
- Coloured maps / Cartes géographiques en couleur
- Coloured ink (i.e. other than blue or black) / Encre de couleur (i.e. autre que bleue ou noire)
- Coloured plates and/or illustrations / Planches et/ou illustrations en couleur
- Bound with other material / Relié avec d'autres documents
- Only edition available / Seule édition disponible
- Tight binding may cause shadows or distortion along interior margin / Le reliure serrée peut causer de l'ombre ou de la distorsion le long de la marge intérieure.
- Blank leaves added during restorations may appear within the text. Whenever possible, these have been omitted from filming / Il se peut que certaines pages blanches ajoutées lors d'une restauration apparaissent dans le texte, mais, lorsque cela était possible, ces pages n'ont pas été filmées.

- Additional comments / Commentaires supplémentaires: **Various pagings.**

L'Institut a microfilmé le meilleur exemplaire qu'il lui a été possible de se procurer. Les détails de cet exemplaire qui sont peut-être uniques du point de vue bibliographique, qui peuvent modifier une image reproduite, ou qui peuvent exiger une modifications dans la méthode normale de filmage sont indiqués ci-dessous.

- Coloured pages / Pages de couleur
- Pages damaged / Pages endommagées
- Pages restored and/or laminated / Pages restaurées et/ou pelliculées
- Pages discoloured, stained or foxed / Pages décolorées, tachetées ou piquées
- Pages detached / Pages détachées
- Showthrough / Transparence
- Quality of print varies / Qualité inégale de l'impression
- Includes supplementary material / Comprend du matériel supplémentaire
- Pages wholly or partially obscured by errata slips, tissues, etc., have been refilmed to ensure the best possible image / Les pages totalement ou partiellement obscurcies par un feuillet d'errata, une pelure, etc., ont été filmées à nouveau de façon à obtenir la meilleure image possible.
- Opposing pages with varying colouration or discolourations are filmed twice to ensure the best possible image / Les pages s'opposant ayant des colorations variables ou des décolorations sont filmées deux fois afin d'obtenir la meilleure image possible.

This item is filmed at the reduction ratio checked below /
Ce document est filmé au taux de réduction indiqué ci-dessous.

| | | | | | |
|-----|-----|-----|-----|-----|-----|
| 10X | 14X | 18X | 22X | 26X | 30X |
| | | | | | |
| 12X | 16X | 20X | 24X | 28X | 32X |

The copy filmed here has been reproduced thanks to the generosity of:

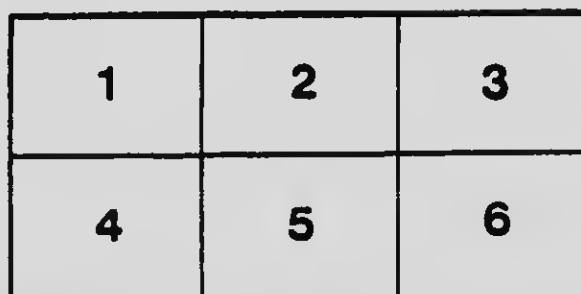
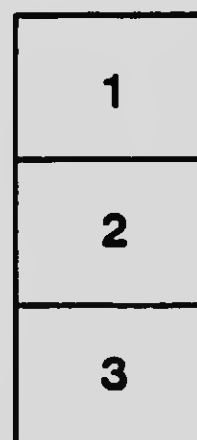
National Library of Canada

The images appearing here are the best quality possible considering the condition and legibility of the original copy and in keeping with the filming contract specifications.

Original copies in printed paper covers are filmed beginning with the front cover and ending on the last page with a printed or illustrated impression, or the back cover when appropriate. All other original copies are filmed beginning on the first page with a printed or illustrated impression, and ending on the last page with a printed or illustrated impression.

The last recorded frame on each microfiche shell contains the symbol \rightarrow (meaning "CONTINUED"), or the symbol ∇ (meaning "END"), whichever applies.

Maps, plates, charts, etc., may be filmed at different reduction ratios. Those too large to be entirely included in one exposure are filmed beginning in the upper left hand corner, left to right and top to bottom, as many frames as required. The following diagrams illustrate the method:



L'exemplaire filmé fut reproduit grâce à la générosité de:

Bibliothèque nationale du Canada

Les images suivantes ont été reproduites avec le plus grand soin, compte tenu de la condition et de la netteté de l'exemplaire filmé, et en conformité avec les conditions du contrat de filmage.

Les exemplaires originaux dont la couverture en papier est imprimée sont filmés en commençant par le premier plat et en terminant soit par la dernière page qui comporte une empreinte d'impression ou d'illustration, soit par le second plat, selon le cas. Tous les autres exemplaires originaux sont filmés en commençant par la première page qui comporte une empreinte d'impression ou d'illustration et en terminant par la dernière page qui comporte une telle empreinte.

Un des symboles suivants apparaît sur la dernière image de chaque microfiche, selon le cas: le symbole \rightarrow signifie "A SUIVRE", le symbole ∇ signifie "FIN".

Les cartes, planches, tableaux, etc., peuvent être filmés à des taux de réduction différents. Lorsque le document est trop grand pour être reproduit en un seul cliché, il est filmé à partir de l'angle supérieur gauche, de gauche à droite, et de haut en bas, en prenant le nombre d'images nécessaire. Les diagrammes suivants illustrent la méthode.

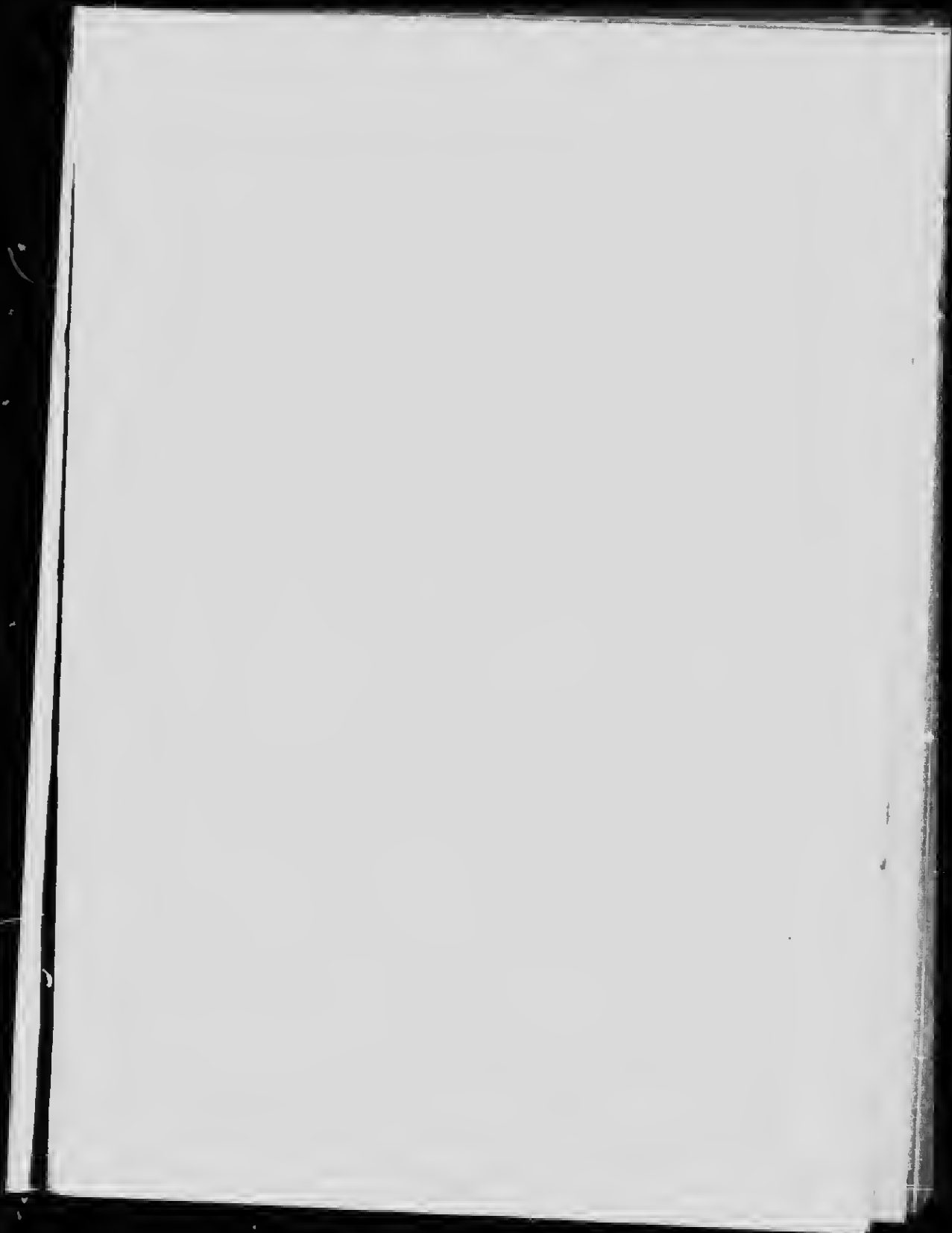
MICROCOPY RESOLUTION TEST CHART

(ANSI and ISO TEST CHART No. 2)



APPLIED IMAGE Inc

1653 East Main Street
Rochester, New York 14609 USA
(716) 482 - 0300 - Phone
(716) 288 - 5989 - Fax



R

As ad

CONSTITUTION
OF THE
GRAND CHAPTER
OF
Royal Arch Masons
OF CANADA

*As adopted at the Sixtieth Annual Convocation held in Toronto,
February 27th, A.I. 2448, A.D. 1918, and ordered
to be published by Grand Chapter.*

TORONTO :
PUBLISHED UNDER AUTHORITY OF
THE GRAND CHAPTER
BY THE GRAND SCRIBE E.
1918

H15719

C22

A2

1915

P411

NOTE

At the Fifty-ninth Annual Convocation of The Grand Chapter of Canada, held at Toronto, Ont., on Wednesday, the 28th day of February, 1917, it was resolved "That the incoming Grand Z. be empowered to appoint a Committee to revise the Constitution of this Grand Chapter."

Subsequently, M. Ex. Companion D. F. Maewatt, Chairman, M. Ex. Companion F. W. Harecourt, and R. Ex. Companion E. T. Malone were appointed as such Committee.

The Committee, after completing the draft and submitting it in print to the constituent Chapters, and to all members of The Grand Chapter, gave the following notice, prior to the 30th day of November, 1917 :

"That they will, at the next Annual Convocation, move that the amendments and revision of the Constitution of the Grand Chapter of Canada, prepared by them, as the Committee appointed by order of Grand Chapter, at its last Convocation, which amendments and revision have been printed and sent to all Chapters within the Jurisdiction of the Grand Chapter, be adopted, and that the present or existing Constitution of the Grand Chapter of Canada, in so far as it may be inconsistent with the Constitution prepared by the said Committee, and now adopted, be, and the same is hereby repealed."

The draft, as amended by The Grand Chapter, was, on Wednesday, the 27th day of February, 1918, unanimously adopted, and the then Constitution of The Grand Chapter was repealed, and this edition of the Constitution and Laws in conformity with the said resolution of The Grand Chapter is hereby promulgated as authority to all Royal Arch Masons, Chapters and Lodges holding of the Grand Chapter of Canada.

Given at the Masonic Temple in the City of Toronto this 28th day of February, 1918.

HENRY T. SMITH,
Grand Scribe E

ARTHUR S. GORRELL,
Grand Z.

6.

CONSTITUTION
AND
GENERAL REGULATIONS
FOR THE GOVERNMENT OF THE ORDER OF
ROYAL ARCH MASONS
OF CANADA

*Revised and adopted by Grand Chapter the 27th day of
February, A.D. 1918, .I. 2448.*

ORGANIZATION

1.—The name of this Grand Chapter is the Grand Chapter of Royal Arch Masons of Canada

JURISDICTION

2.—This Grand Chapter is a body of Royal Arch Masons in which is invested the government and care of Capitular Masonry within the Provinces of Ontario, Manitoba, Saskatchewan, British Columbia, the North-West and the Yukon Territories, in the Dominion of Canada.

POWERS AND AUTHORITY

3.—The Grand Chapter is the highest source of authority in Capitular Masonry in this jurisdiction. In it alone is vested the government, control, superintendance, and the power of enacting laws, rules, and regulations for the government of all Chapters of Royal Arch Masons and all Lodges of Most Excel-

lent Master Masons and Mark Master Masons within its jurisdiction.

4.—It has also the inherent power of investigating, regulating and finally deciding all matters relating to the Royal Arch, the Most Excellent Master and the Mark Master degrees, or to the constituent Chapters, Lodges, or individual Companions, either by direct or delegated authority.

5.—It grants, under its great seal and the sign manual of its Grand Principals, attested by the Grand Scribe E., Warrants; and under its great seal and the sign manual of its Grand Z., attested by the Grand Scribe E., dispensations for constituting Chapters of Royal Arch Masons and Lodges of Mark and Most Excellent Master Masons, with authority to assign the limits of the several districts, and when expedient suspend, revoke, arrest or annul said Warrants.

6.—It alone can, after due summons for trial, expel an offending Brother or Companion, or restore him, after his expulsion has been removed.

7.—It decides all questions of Capitular Masonic law, usage and custom, makes, alters and repeals at pleasure, laws for its government and the government and control of its own members, and deals with all appeals that may be made by either individual Companions or Chapters, and reviews, alters, confirms, reverses or annuls their decisions, according to the provisions of the Constitution as authorized by the Grand Chapter.

8.—It has the power of discipline, admonition, censure, or instruction over all Chapters and Com-

panions. It may also expel, suspend, reprimand, relieve or restore a Companion or Brother, on appeal from a constituent Chapter, or Lodge.

9.—It shall see that the authorized work of the Royal Craft is preserved, and that no deviation be permitted either in the work or ceremonials and forms of the Order.

10.—No dispensation or Warrant shall be granted for instituting Lodges of Mark Master Masons or Most Excellent Masters independent of a Chapter of Royal Arch Masons. (Sec. 98).

OF WHOM COMPOSED

11.—This Grand Chapter shall be composed of its officers, both elected and appointed, and members as hereinafter enumerated, and set forth in Sections 12, 13 and 14, who must be Companions in good standing in a constituent Chapter, whose names have been recorded in the books of the Grand Chapter, and have paid their annual contributions thereto, and its members shall rank in the following order :

GRAND OFFICERS

The Grand Z. }
 The Grand H. } *Grand Council*
 The Grand J. }

The Grand Superintendents of Districts, viz.:

- The Grand Superintendent of the First or St. Clair District.
- The Grand Superintendent of the Second or London District.
- The Grand Superintendent of the Third or Wilson District.
- The Grand Superintendent of the Fourth or Wellington District.
- The Grand Superintendent of the Fifth or Hamilton District.
- The Grand Superintendent of the Sixth or Huron District.
- The Grand Superintendent of the Seventh or Niagara District.
- The Grand Superintendent of the Eighth or Toronto District.

The Grand Superintendent of the Ninth or Georgian District.
 The Grand Superintendent of the Tenth or Ontario District.
 The Grand Superintendent of the Eleventh or Prince Edward District.
 The Grand Superintendent of the Twelfth or St. Lawrence District.
 The Grand Superintendent of the Thirteenth or Ottawa District.
 The Grand Superintendent of the Fourteenth or Algoma District.
 The Grand Superintendent of the Fifteenth or Manitoba East District.
 The Grand Superintendent of the Sixteenth or Manitoba West District.
 The Grand Superintendent of the Seventeenth or British Columbia District.
 The Grand Superintendent of the Eighteenth or Kootenay District.
 The Grand Superintendent of the Nineteenth or Yale-Columbia District.
 The Grand Superintendent of the Twentieth or Saskatchewan North District.
 The Grand Superintendent of the Twenty-first or Saskatchewan West District.
 The Grand Superintendent of the Twenty-second or Saskatchewan East District.
 The Grand Superintendent of the Twenty-third or New Ontario District.

 The Grand Treasurer
 The Grand Scribe E.
 The Grand Scribe N.
 The Grand Principal Sojourner
 The Grand Registrar, and
 The Grand Janitor, who shall not, however, have a vote in Grand Chapter.

12.—All Past Grand officers, including Past Grand Superintendents of districts, who shall rank next in order to the present officers of the same rank. Past Grand Z's shall rank next in order to the Grand Z., and before the Grand H.

APPOINTED OFFICERS

- 13.—The Grand Lecturer.
The Grand Senior Sojourner.
The Grand Junior Sojourner.
The Grand Sword Bearer.
The Grand Masters of the Veils.
The Grand Standard Bearer.
The Grand Director of Cermonies.
The Grand Organist.
The Grand Pursuivant.
Ten Grand Stewards.

MEMBERS

14.—The three Principals (duly returned) of every constituent Chapter, and all Past Z's. (duly returned) so long as they shall continue members of their Chapters ; provided, however, that no representative of any Chapter, which has neglected to make its returns and payments to Grand Chapter for more than one year shall be permitted to vote at any Convocation thereof, until such returns and payments, respectively, shall have been completed and made. (See Section 191.)

15.—No Companion shall be entitled to past rank in any office in Grand Chapter, or in any Chapter, unless he has served a full term of twelve months. (See Section 181.)

16.—A Past Z. of a Chapter in this jurisdiction who has been duly registered in the books of Grand Chapter, and who affiliates with any other Chapter, is entitled to his rank according to seniority both in Grand Chapter and in the Chapter with which he affiliates.

17.—The privileges of Masonic rank under this Grand Chapter shall be restricted to those who have obtained rank under this jurisdiction.

18.—Present and Past Grand officers of Grand Chapter shall be known by the following titles : all Grand Z's and Past Grand Z's as "Most Excellent Companion" ; all other elected Grand and Past Grand officers, and the Grand Superintendents of districts, as "Right Excellent Companion," and all appointed Grand officers as "Very Excellent Companion." The Grand Janitor shall be styled "Companion."

19.—There shall be an Historian of Grand Chapter, elected by open vote, and shall hold office during the pleasure of Grand Chapter. (See sec. 135).

CONVOICATIONS

20.—The Annual Convocation of this Grand Chapter shall be holden on the fourth Wednesday in February at such place as may be selected by Grand Chapter at the previous Annual Convocation at the hour of ten o'clock in the forenoon.

21.—Emergent Convocations may be convened by the Grand Z., (or in his absence from the jurisdiction by the authorized officer of Grand Chapter as hereinafter provided) whenever in his judgment it may be necessary, or upon the request therefor in writing of the Z's of twelve Chapters, seven clear days' notice being given of such Convocation. The reason for convening a Grand Chapter of Emergency shall be expressed in the summons, and no business other than that stated shall be entered upon at that

Convocation. The said Emergent Convocation shall be called within thirty days of the receipt of the application.

22.—The representatives of nine Chapters, together with at least one of the Grand Principals, shall constitute a quorum at all Convocations, Grand Chapter is declared open in Ample Form when the Grand Z., presides ; in due form when a Past Grand Z., or the Grand H., or Grand J., presides, and at all other times in Form, yet with the same authority.

23.—The Grand Z., if present, shall preside in Grand Chapter. If, at any Convocation thereof, annual or emergent, except a Convocation called to assist in the performance of a ceremony as hereinafter provided, the Grand Z. be absent, Grand Chapter shall be ruled by the elective Grand officer next in rank and seniority who may be present, and if no elective grand officer be present, by the Z. of the senior Chapter present.

24.—No Companion below the rank of a Past Grand Z. shall assume the Grand Z's chair, though he be entitled in the absence of the Grand Z. to rule Grand Chapter.

25.—The Grand Z. having taken his seat and opened Grand Chapter, the following shall be the order of business :

1. Confirming the minutes of previous Convocation and signing same by the Presiding officer after approval by Grand Chapter.
2. Reading and referring the Grand Z's address.

CONSTITUTION

3. Reading communications, petitions, appeals, etc., and referring them for action.
4. Receiving the reports of the Grand Treasurer, the Grand Scribe E., and Grand Superintendents and referring them to the Executive Committee for consideration and report.
5. Receiving the reports of the Executive Committee, and, if expedient, considering the same in the following order, viz. :
 - (a) The report of the Committee on Credentials when ready, but not later than 2 p.m. (See Section 38.)
 - (b) The report on warrants and dispensations.
 - (c) The report on printing and supplies.
 - (d) The report on finance.
 - (e) The report on benevolence.
 - (f) The report on grievances and appeals.
 - (g) The report on the condition of Capitular Masonry.
 - (h) The report on constitution, laws and jurisprudence.
 - (i) The report on fraternal dead.
 - (j) The report on fraternal correspondence.
6. Receiving, and, if expedient, considering the reports of special committees.
7. Considering notices of motion.
8. General Business.
9. Elections.
10. Installation and Closing.

26.—The installation and investiture of officers shall take place immediately before the close of the Convocation.

27.—The order of business shall be called by the Grand Scribe E. at each Convocation and may at any time be suspended or changed by a two-thirds vote of Grand Chapter, and not otherwise.

28.—Grand Chapter may leave any particular matter to the determination of the Grand Z. Subject to this provision, all matters brought up for discussion in Grand Chapter shall be decided by a majority of votes, each Companion present having one vote, and the Grand Z. a casting vote in case of a tie. Each Companion when voting shall hold up one of his hands. The Grand Scribe E. shall count the votes, unless the numbers in the opinion of the Grand Z. be so unequal as to render counting unnecessary.

29.—When a Companion appeals from the decision of the Grand Z. given while Grand Chapter is in session he shall state shortly the grounds for his appeal. The Grand Z. may then state the reasons for his decision, and, without further debate, shall put the question, "Shall the decision of the chair be sustained?" When the vote has been taken the decision of Grand Chapter shall be announced.

30.—Appeals from the ruling, decision or action of the Grand Z., or any subordinate authority, shall be brought before Grand Chapter in the manner provided by Section 31.

31.—Every Chapter or Companion affected by any ruling, decision or action of the Grand Z., the

Grand Superintendents, the Executive Committee, or any subordinate authority, shall be duly served with notice of such ruling, decision or action and shall have the right to appeal therefrom to Grand Chapter. Notice of appeal shall be given by the appellant in writing to the Grand Scribe E. within twenty-one days after the notice of such ruling, decision or action shall have been served upon him, and the appeal shall be presented to Grand Chapter by the Executive Committee. The provisions respecting service prescribed in Rule 5, Capitular Masonic trials, shall apply to all services in connection with appeals provided for by this Constitution.

32.—Grand Chapter shall have jurisdiction to entertain an appeal from the verdict or decision of any Chapter or Commission in connection with a trial for a Masonic offence, and to deal with the same as provided by the rules respecting Capitular Masonic trials. (See Rule 41 and following rules.)

33.—Grand Chapter only can withdraw the warrant of a Chapter and erase the same.

NOTE.—For the procedure relating to expulsion and restoration, see post Rules 61, 62, 63, Masonic Trials.

34.—The Warrant of a Chapter shall not be withdrawn, nor shall the Chapter be erased, until the Z. or officers thereof have been summoned to show cause in Grand Chapter why such action should not be taken. (See Section 191.)

COMMITTEE ON CREDENTIALS

35.—On the day preceding the annual Convocation of Grand Chapter, the Executive Committee

shall appoint three or more Z's or Past Z's of Chapters as a committee on credentials.

36.—This committee shall cause to be registered the names of the Companions in attendance at the annual Convocation who are qualified to vote, and the number of votes they are entitled to cast at the election of officers and selection of the place for the next annual Convocation.

37.—The committee shall deliver to each of such Companions the ballot papers to which he is entitled. Each Chapter shall be entitled to three votes. If the Principals of a Chapter be present, each shall be entitled to one vote. If any one of them be absent his vote shall be given to the senior officer present. Each Past Z. shall be entitled to one vote.

38.—The registration books shall be closed at two o'clock on the afternoon of the day of the elections and the committee shall immediately thereafter report to the Grand Z. and shall furnish to the chairman of the scrutineers the names of the Companions who have registered and are qualified to vote.

OFFICERS—HOW CHOSEN

39.—The officers of Grand Chapter shall be elected or appointed annually, and shall hold office until their successors shall have been duly elected or appointed and installed.

40.—The officers of Grand Chapter and the members of the Executive Committee, elected as such by Grand Chapter, shall be elected by ballot after nomination.

41.—The place at which the next Annual Convocation of Grand Chapter is to be held shall be determined by ballot at the same time as the vote is taken for the election of officers. The place for which the largest number of votes is cast shall be regarded as the one selected.

42.—Candidates who are eligible for any elective office requiring nomination may be nominated by any member of Grand Chapter.

43.—Nominations for any elective office requiring nomination, for the Executive Committee, and for the place of holding the next Annual Convocation shall be in writing and shall be delivered to the Grand Scribe E. before twelve o'clock noon of the first day of the meeting. No Companion shall be nominated for any elective office in Grand Chapter nor for the Executive Committee unless he be at the time in attendance at Grand Chapter or unless he shall have given his consent in writing to such nomination.

44.—No Companion's name shall be submitted to ballot for more than one elective office. Any Companion nominated for more than one elective office may withdraw his name from any such nominations at any time before the vote is taken, and, in the event of his not so withdrawing, his name shall be submitted to ballot for the senior office only.

45.—The ballot papers shall be printed under the direction of the Grand Scribe E. and shall contain :

(a) A letter or figure showing the number or order of the ballot.

(b) A list of the elective officers.

(c) Properly defined spaces into which may be written :

- (1) The names of the Companions to be voted for ;
- (2) The place of the next Annual Convocation.
- (d) The number of votes cast with each ballot.

46.—The M. Ex. the Grand Z. shall, before calling off Grand Chapter at the end of its first session, appoint and announce the names of a sufficient number of scrutineers, not being Grand Chapter officers or nominated for office, to take charge of the ballot. He shall also appoint one of the scrutineers to be chairman, whose duty it shall be to supervise the scrutineers in the performance of their duties, to decide any doubtful ballots, and to report the result of each ballot to the presiding officer of Grand Chapter. Before entering upon their duties the scrutineers shall solemnly pledge themselves to perform the same truly and faithfully.

47.—The scrutineers shall meet at two o'clock in the afternoon of the day of the meeting in a convenient room set apart for the purpose in, or adjoining, the place of meeting. They shall act in sections of three under the direction of the chairman. Each section shall be provided with a ballot box and a book containing the name and number of the Chapter, of each Companion entitled to vote, and the number of votes to which he is entitled.

48.—Each Companion voting shall write upon one of the ballot papers the name or number of the Companion or Companions for whom he desires to vote,

and the name of the place at which he desires that the next Annual Convocation shall be held. He shall vote for five nominated members of the Executive Committee, otherwise his ballot for the Committee shall be void. After exposing to the scrutineers the figures on his ballot indicating the number of his votes and furnishing such other proper information as they may require, he shall deposit his ballot paper in the proper ballot box.

49.—No Companion shall deposit more than one ballot paper in his personal right, nor more than one ballot paper for the Chapter legally represented by him. Any violation of this rule shall constitute a Masonic offence for which the Companion charged shall be tried summarily by a committee appointed by the M. Ex. the Grand Z. If found guilty, he shall be sentenced by that officer to be reprimanded, to be suspended for a limited time, or to be suspended indefinitely.

50.—The M. Ex. the Grand Z. shall declare the first ballot closed at 2.30 o'clock in the afternoon (or as soon thereafter as possible) of the day of the election and the vote shall be counted forthwith and announced.

51.—The five Companions nominated for the Executive Committee obtaining the greatest number of votes shall be duly elected.

52.—A candidate for office other than for membership on the Executive Committee must, in order to be elected, receive a majority of all the votes cast.

53.—If, upon the first ballot, some of the Companions nominated for any office, other than mem-

bership on the Executive Committee, do not obtain a majority of all the votes cast, another ballot shall be taken in respect of such office, and so on until the requisite majority has been obtained. Provided, however, if three or more Companions are nominated for an elective office, other than the Executive Committee, and there is no election, the Companion receiving the lowest number of votes on each ballot shall retire.

54.—All the ballot papers cast at any election shall be forthwith deposited by the chairman of the scrutineers with the Grand Scribe E., who shall retain them for three months and shall then, unless otherwise directed by the Grand Z. destroy them by fire.

55.—The Grand Janitor shall be elected by an open vote of Grand Chapter.

56.—None but Past Z's shall be eligible for any office in this Grand Chapter, except the office of Grand Janitor, which may be filled by any Royal Arch Companion.

WHEN INSTALLED

57.—The appointed officers shall be selected by the Grand Z. after his installation, and both elected and appointed officers shall be respectively installed and invested at the Annual Convocation, and shall hold their respective offices until the next Annual Convocation or until their successors shall have been regularly elected, appointed, installed or invested.

58.—Should any officer elected or appointed be absent from the Annual Convocation, he shall, as soon as convenient thereafter, be installed or invest-

ed under the authority of the Grand Z., by the Grand Superintendent or other Grand or Past Grand officer in his own or any other Chapter. No officer can be installed by proxy.

59.—Every Companion elected or appointed to office shall during his term of office be a subscribing, honorary or life member of some constituent Chapter.

60. The Grand Superintendents of Districts shall be elected by a majority of the representatives and Past Z's of their respective Districts present at the Annual Convocation, subject to the confirmation of the Grand Z.

61.—The Grand Superintendent must be a Past Z. and a resident of the District for which he is elected. Should he, at the time of his election, be Z. of a Chapter, and should his election be confirmed by the Grand Z., such election shall, ipso facto, operate to vacate his office of Z., and a new election shall be held by the Chapter.

62.—The Grand Lecturer, Grand Senior and Junior Sojourners, Grand Sword Bearer, Masters of Veils, Standard Bearer, Director of Ceremonies, Organist, Pursuivant and ten Stewards, shall be appointed by the Grand Z.

THE EXECUTIVE COMMITTEE

63.—In order that the business of the Grand Chapter may be placed before it in proper and regular form an Executive Committee shall be constituted.

64.—The Committee shall consist of the Grand Z., all Past Grand Z's, the Grand H., (who shall be

ex-officio President of the Committee), the Grand J., the Grand Superintendents of Districts, the Grand Scribes, the Grand Treasurer and ten other members of Grand Chapter, five to be elected annually by ballot, and five to be appointed annually by the Grand Z., immediately after the election and appointment of the Grand officers.

65.—The Grand H. shall be the presiding officer, and in his absence the Grand J., or in his absence a chairman selected by the Committee shall preside.

66.—Seven members shall constitute a quorum for the despatch of business.

67.—The Executive Committee shall form sub-committees on Credentials, Warrants and Dispensations, Printing and Supplies, Finance, Benevolence, Grievances and Appeals, Constitution, Laws and Jurisprudence, Condition of Capitular Masonry, Fraternal Dead, and Fraternal Correspondence, and on such other business as may be deemed necessary.

68.—The Executive Committee shall meet at a time selected by the Grand H. prior to the Annual Convocation and at other times if necessary.

VOTES AND VOTERS

69.—Each officer and permanent member of this Grand Chapter (except the Grand Janitor) shall be entitled to one vote and each Chapter shall be entitled to three votes.

70.—All matters shall be decided by a majority of votes except when otherwise ordered.

71.—The votes are to be signified by a show of hands, which the Grand Scribes are to count if the voting is close.

72.—Five members may demand a ballot on any question either before or immediately after an open vote shall have been taken, which ballot shall be collected at once.

73.—The member voting is entitled to cast on such ballot the number of votes shown by the register of the Committee on Credentials. Whether by open vote or by ballot, in case of equality the presiding officer shall have the casting vote.

74.—No visitor shall on any account be permitted to vote.

75.—In case all the representative officers of a Chapter (the Z., the H., and the J.) be unable to attend the Annual Convocation, the Chapter may by open vote, select any Past Z. (who shall be a member of this Grand Chapter) as its representative at the then next ensuing convocation of the Grand Chapter, and such representative or proxy shall be entitled to cast the vote of the Chapter appointing him.

76.—The credentials of a Companion acting as proxy for a Chapter must contain in writing the resolution of the Chapter giving the proxy, signed by the Z. and Scribe E. of the Chapter on the authorized form.

77.—No Companion can represent more than one Chapter.

78.—A Chapter shall submit an alternate name ; and the alternate shall represent the Chapter in case

the first named Companion shall have accepted another proxy.

79.—The names of the proxy and the alternate from all Chapters, within the Province of Ontario, shall be sent by registered letter to the Grand Scribe E. at least thirty days before the Annual Convocation of the Grand Chapter, and from Chapters outside the Province of Ontario sixty days before the Annual Convocation.

80.—In the event of the representative officers and proxy of a Chapter being absent, the senior Past Z. of the Chapter present shall be entitled to the vote of his Chapter.

81.—Any Grand officer who shall, during the term for which he was chosen by either election or appointment, remove from the jurisdiction, or cease to be a member of some regular constituent Chapter, thereby vacates his office.

82.—Any Past Grand officer or member who for six months consecutively ceases to be a member on the roll of a constituent Chapter shall be disqualified from attending the Grand Chapter until he shall have again become, and continues to be, a member on the roll of some constituent Chapter.

83.—No Grand officer, who has been duly elected by the Grand Chapter, can be removed or suspended from his office by the Grand Z. except for cause ; and his suspension or removal must be ratified by a majority of the members present at the next following Annual Convocation of this Grand Chapter.

84.—The Grand Z. shall lay before such Annual Convocation a statement of the removal or suspension, together with his reasons therefor.

85.—Any Grand officer of this Grand Chapter may resign his office, either before or after his installation or investiture, whereupon the Grand Z. shall fill the vacancy, by appointing another eligible Companion to such office, until the next Regular Convocation of Grand Chapter.

86.—When any Grand Lodge suspends or expels a brother, who is a Royal Arch Mason, for unmasonic conduct, such action shall ipso facto suspend or expel him from his Royal Arch privileges, while the Craft discipline continues in force.

87.—Chapters neglecting to make their annual returns and payments to Grand Chapter cannot be represented in Grand Chapter until such returns and payments shall have been made.

88.—Grand Chapter may, on motion, in recognition of service, ability or service rendered, confer by unanimous vote, upon any member of Grand Chapter such rank as it may deem appropriate, provided that notice be sent in writing by the mover to the Grand Scribe E. prior to the 30th November preceding, and the constituent Chapters notified by that officer prior to the 31st December.

89.—Grand Chapter may on motion constitute any Companion of eminence and ability who has rendered service to the Royal Craft who hails from a foreign jurisdiction and is a member of a Grand Chapter recognized by this Grand Chapter, an honorary member thereof, with such rank and distinction as it may deem appropriate, but not above that of Past Grand J. The procedure on such motion shall be similar to that provided in Section 88.

90.—No officer or member shall be permitted to be present at any Convocation of Grand Chapter without the proper clothing of a Royal Arch Mason.

91.—The officers of every Chapter, Grand and constituent, in this jurisdiction, before they enter upon the exercise of the functions of their respective offices, and every candidate upon his admission shall take an obligation to support and maintain the Constitution, laws, rules, and regulations of the Grand Chapter of Royal Arch Masons of Canada.

92.—If the proposer of a motion shall not attend to move it, Grand Chapter may consent to a postponement thereof or may set it aside. Grand Chapter may, however, permit any Companion present to move it, as if he had originally given notice thereof.

93.—A discretionary power is vested in the presiding officer of rejecting any notice of motion if such shall be deemed by him improper, unlawful, or inconsistent with the Ancient Landmarks of the Craft.

POWERS OF THE GRAND Z.

94.—The Grand Z. shall, as soon as possible after his installation, appoint the Grand Chapter officers whose appointment is not otherwise provided for by the Constitution.

95.—He shall, during such meeting, install and invest, or cause to be installed and invested, the officers who require installation or investiture, and who are present and shall give directions for the installation or investiture of those who are not present.

96.—The Grand Z. shall exercise all the executive and judicial functions of this Grand Chapter during its recess, and shall at each Annual Convocation communicate in writing a statement of his official acts during such recess, and recommend such measures as he may deem expedient.

97.—He shall have the power during the recess of Grand Chapter to grant a Dispensation under his hand and attested by the Grand Scribe E., under the seal of Grand Chapter, upon the petition of nine registered Royal Arch Masons in good standing, empowering them to hold Chapters of Royal Arch Masons and Lodges of Mark and Most Excellent Master Masons, for a certain specified time, provided such time does not extend beyond the next ensuing Annual Convocation of Grand Chapter.

98.—Grand Chapter may confirm the said Dispensation and grant the petitioners a Warrant of Constitution, (but no Warrant or Dispensation shall be granted for constituting Lodges of Mark or Most Excellent Masters, independent of a Chapter of Royal Arch Masons). (Sec. 155, Sub-sec. 5.)

99.—He shall also have the sole power to appoint representatives of this Grand Chapter, near other recognized Grand Chapters, and to receive and accredit representatives of other recognized Grand Chapters near this Grand Chapter. All Committees are appointed by the Grand Z. unless otherwise ordered by Grand Chapter.

100.—He shall also have the power to decide all questions of usage, order and Masonic law, as applied to Capitular Masonry, subject, however, to

right of appeal to Grand Chapter from his decision.
(See Sections 30-32.)

101.—He shall also have the power to convene any Chapter or Chapters of Royal Arch Masons within this jurisdiction at such time and place as he may designate, and in person or by proxy to preside thereat, inspect the proceedings and work of the same and require a strict compliance with the laws, rules and regulations of Capitular Masonry within the jurisdiction.

102.—He shall also have the power to suspend the Warrant or suspend the Z. of a Chapter, until the next Annual Convocation of Grand Chapter.

103.—He shall also have the power to command every officer of the Grand Chapter and to call upon them for information, advice or assistance, in connection with the Royal Craft.

104.—He may send any of the Grand officers to visit any Chapter.

105.—He may, either personally, or by a committee of inquiry to be appointed by him, investigate any subject of Masonic complaint which may be brought before him, and may give such orders and directions with respect to the attendance of brethren or Companions and the production of books and papers, including the warrant, books and accounts of any Chapter, as he may deem necessary for the purposes of such investigation. Should his orders or directions be disobeyed he may suspend any offending brother or Companion for such disobedience until the next Convocation of Grand Chapter, or for such shorter period as he may deem advisable.

106.—(1) He may, when such action appears to him to be necessary or expedient, suspend any brother or Companion, or arrest the warrant or dispensation of any Chapter and suspend the operation thereof until the next Convocation of Grand Chapter, or for such shorter period as he may deem advisable.

(2) He shall report in writing to Grand Chapter the action taken by him, his reasons therefor and his opinion respecting any further action in the matter which should be taken by Grand Chapter.

107.—He may direct that a charge be preferred, in a Chapter having jurisdiction to try the same, against any brother or Companion for any Masonic offence alleged to have been committed by him, and may, if he think it expedient to do so, commit the supervision of the trial to the Grand Superintendent, or any other officer whom he may appoint. (See Rule 49 respecting trials.)

108.—He may decide questions of usage, order and Masonic law, which may be submitted to him.

109.—He may entertain an appeal from the decision or action of a Grand Superintendent, and change or modify the same.

110.—An appeal shall in all cases be to Grand Chapter from the opinion or decision of the Grand Z. and his opinion or decision shall have force only until the next Convocation of Grand Chapter when it may be affirmed or set aside.

111.—It is the prerogative of the Grand Z. to perform the following ceremonies, viz.: Constituting and consecrating Chapters, dedicating Chapter rooms, and installing and investing Grand officers

and no Companion can lawfully perform any of these ceremonies unless authorized by the Grand Z. to do so as his representative.

112.—The Grand Z. has authority to grant dispensations for the following purposes, viz. :

(1) To authorize the requisite number of Companions to meet as a Chapter until the next Annual Convocation of Grand Chapter.

(2) To authorize the Grand Scribe E. to issue a Grand Chapter certificate to a Companion who has been legally admitted to a higher degree at a shorter interval than prescribed by the Constitution. (See Section 140.)

(3) To relieve from Masonic disability a member of a Chapter which has been suspended. (See Section 208, Sub-sec. 4.)

113.—He also has the authority to grant dispensations to any Chapter for any of the following purposes, viz. :

(1) To hold any function in the name of the Chapter or of the Royal Craft.

(2) To elect and install (or either) officers at a time other than that fixed by the by-laws.

(3) To hold a Chapter of Instruction.

(4) To confer a higher degree on a Companion at a shorter interval than that prescribed by the Constitution.

(5) To receive and act upon a petition for exaltation in a Chapter from a person who has not resided for one year within its jurisdiction.

(6) To receive and act upon a petition for a candidate for exaltation who resides outside the jurisdiction of the Chapter.

114.—(1) He may summon any Chapter or officer of a Chapter to attend him, and may order the production of the Warrant, books, papers and accounts of such Chapter.

(2) If the summons be not complied with, nor a sufficient reason given, in his opinion, for non-compliance, such summons shall be repeated as a peremptory one, and if such summons be not attended to, the offending Chapter or member may be suspended pending report to Grand Chapter for further consideration.

115.—He shall not be applied to officially concerning any matter connected with Capitular Masonry, except through the Grand Scribe E., the Grand H., Grand J., the Grand Superintendents, or the Executive Committee.

116.—He shall preside at all the Convocations of Grand Chapter, when present. (Sec. 23.)

117.—In case of the absence, disability or death of the Grand Z., the immediate Past Grand Z. shall rule Grand Chapter until the next election takes place and failing him any Past Grand Z., in the order of seniority. If none be found to act Grand Chapter shall forthwith be summoned by the Grand H., or in his absence by the Grand J., to elect a Grand Z.

118.—The statement of the powers and prerogatives of the Grand Z. contained in the foregoing sections shall not be construed as limiting or abridging the powers and prerogatives attached to the office of Grand Z. by Capitular Masonic law or custom, except in so far as they directly limit or abridge the same.

119.—He shall receive his actual expenses when travelling on the business of this Grand Chapter and such further sum as Grand Chapter may from time to time determine.

THE GRAND H.

120.—(1) It shall be the duty of the Grand H. to preside at all meetings of the Executive Committee, and to convene it at such time and hour as he may order.

(2) He shall also exercise such executive or judicial functions as may be delegated to him by the Grand Z.

(3) He shall report in writing to the Grand Z. any and all official acts performed by him during the recess of Grand Chapter.

THE GRAND J.

121.—It shall be the duty of the Grand J. to act as Vice-President at the meetings of the Executive Committee, and in the absence of the Grand H. to preside at the same, and to exercise such other and executive judicial functions as may be delegated to him by the Grand Z.

122.—He shall report in writing to the Grand Z. any and all official acts performed by him during the recess of Grand Chapter.

THE GRAND SUPERINTENDENTS OF DISTRICTS

123.—(1) The Grand Superintendent must be a Past Z. and a resident in the district for which he is appointed.

(2) He shall see that every Chapter in his district is working in the authorized manner, and that returns have been regularly forwarded to Grand Chapter, with all moneys that may have accrued due to it. Should any Chapter refuse or neglect to make such returns and payments he shall immediately report the fact in writing to the Grand Z.

(3) He may preside and rule in every Chapter he visits within his district, and shall report upon any subject of Masonic complaint, or irregularity respecting Chapters, or individual Companions within his district, on being specially authorized to do so by the Grand Z. or Grand Chapter.

(4) A minute of all such proceedings, stating the offence and the law applicable to it, together with his decision, is to be transmitted to the Grand Z. through the Grand Scribe E., and when the case is of so flagrant a nature as in his judgment to require the erasure of a Chapter, or the expulsion of a Companion, he shall make a special report to the Grand Chapter, with his opinion thereon.

(5) He may summon any Chapter or Companion within the district to attend him, and may order the production of the Warrant, books, papers and accounts of such Chapter.

(6) If the summons be not complied with, nor a sufficient reason given for non-compliance, he shall immediately report the fact in writing to the Grand Z.

(7) All petitions for Dispensations or Warrants for new Chapters must be recommended and duly signed by the Grand Superintendent of the District prior to their transmission to the Grand Scribe E.,

whose duty it shall be to see that such recommendation and signature are duly attached to each petition. He shall also see that it is recommended by the nearest Chapter. If such recommendation be unreasonably withheld, it shall be left to the decision of the Grand Z. (See Section 155, Sub-sec. 4.)

(8) He shall satisfy himself that the Principals recommended in the petition for a new Chapter are duly qualified to perform the duties of their respective offices, and for that purpose he may summon these Companions to attend for examination, and if they be found qualified he shall grant them certificates of qualification.

(9) He shall ascertain whether a Chapter working under a dispensation in his district is provided with suitable furniture and regalia. (See Section 161.)

(10) He may appoint a competent Companion to instruct any Chapter in his district which may desire instruction.

(11) For the information of the Grand Chapter he shall transmit to the Grand Scribe E. not later than the fifteenth day of January prior to each Annual Convocation of Grand Chapter, a report in writing on the condition of Royal Arch Masonry in his District, with a list of such Chapters as may have been constituted since the last Annual Convocation, and a list of all Chapters visited.

(12) He shall have power to give or refuse consent for the removal of a Chapter from place to place within his District, but not from his District into another, nor from another District to his own without the sanction of the Grand Z. Provided that

such removal shall not be made into any village, town or city where a Chapter or Chapters exist, without the permission of the said Chapter or a majority of the Chapters.

(13) He may grant dispensations for holding Chapters of Instruction in his District, but for no other purpose, and shall report his dispensations to the Grand Z.

(14) If the Grand Superintendent shall neglect to act or proceed within a reasonable time in any case or business in which it is his duty to act or proceed, complaint of his neglect may be sent to the Grand Scribe E., who shall forward the same to the Grand Z. to be dealt with by him.

THE GRAND TREASURER

124.—It shall be the duty of the Grand Treasurer to keep such books and accounts, and in such a manner, as may, from time to time, be prescribed by the Executive Committee. His books shall always be open for inspection by any member of the Grand Council or by any Committee authorized to inspect the same. His accounts shall be prepared and audited as prescribed by Section 136, Sub-sec. 10. He shall be the custodian of the bond of the Grand Scribe E.

THE GRAND SCRIBE E.

125.—(1) It shall be the duty of the Grand Scribe E. to record all laws, acts and transactions of Grand Chapter.

(2) To receive, file and safely keep all papers, books and documents of Grand Chapter other than those belonging to the Grand Treasurer.

(3) He shall prepare and superintend the publication of the proceedings of all Convocations of Grand Chapter immediately after the close of such Convocations.

(4) He shall have the custody of the seal of the Grand Chapter and shall affix the same to all documents issued by authority of Grand Chapter or the Grand Z.

(5) He shall sign and certify all instruments issued by Grand Chapter under seal or otherwise.

(6) He shall issue summonses for all Convocations of Grand Chapter, of the Executive Committee, or of any Committee, as he shall be directed by the Grand Z., Grand Chapter, Executive Committee or the President of the Executive Committee, and shall attend and take minutes of all their proceedings.

(7) He shall keep a register of all members of constituent Chapters.

(8) He shall receive returns from the several Chapters and enter them in the Books of Grand Chapter and duly report the same to each Annual Convocation of Grand Chapter.

(9) He shall send to all Chapters copies of the Proceedings of Grand Chapter and of all such other papers as may be ordered, either by the Grand Z., Grand H., or the Executive Committee.

(10) He shall, on or before the thirty-first day of December in each year, send to each Chapter and to every officer of Grand Chapter copies of all Notices of Motion.

(11) He shall notify all Chapters annually of all demitted, expelled, suspended and restored members for the year.

(12) He shall furnish the Executive Committee, and the Grand Superintendents with all such documents and information as they may require.

(13) He shall receive all Petitions, Memorials and other papers and lay them before the Grand Z. or other proper authority.

(14) He shall attend the Grand Z. or the Executive Committee, and take to him or the Committee the books and papers he or they may direct.

(15) He shall conduct the correspondence of Grand Chapter.

(16) He shall receive and deposit all moneys of Grand Chapter, and keep all the accounts thereof in accordance with the rules prescribed by the Executive Committee.

(17) His books and accounts shall always be open for inspection by the Grand Z. or the President of the Executive Committee, or any Committee thereof authorized to inspect the same.

(18) His accounts shall be prepared and audited as prescribed by Section 136, Sub-sec. 10.

(19) He shall perform all other duties pertaining to his office.

(20) He shall give a bond, to be approved by the Executive Committee, to the Grand Chapter through the Grand Z. in some guarantee company in the sum of \$2,500, for the faithful performance of his duties.

(21) This bond shall be placed in the custody of the Grand Treasurer. The fee for such bond shall be paid by Grand Chapter.

(22) All moneys payable to Grand Chapter shall be received by the Grand Scribe E., who shall forth-

with deposit same in the chartered bank selected by the Executive Committee, to the credit of Grand Chapter, and shall forthwith send a duplicate of the deposit slip, certified by the bank, to the Grand Treasurer, who shall keep an account of all moneys so received and deposited.

(23) All cheques issued on behalf of Grand Chapter shall bear the signatures of the Grand Scribe E., the Grand Treasurer and the President of the Executive Committee.

(24) The accounts of the Grand Scribe E. and the Grand Treasurer shall be kept in such manner and form, and subject to such rules and regulations, as the Executive Committee may, from time to time, prescribe.

(25) The accounts shall be closed on the 31st day of January in each year.

(26) They shall be audited during the year by a professional accountant to be named by the Executive Committee, and an abstract thereof, certified by the Auditor as correct, shall be prepared and sent to the President of the Executive Committee not later than the 15th day of February in each year.

(27) A full statement of the accounts for the year preceding shall be prepared for the information of Grand Chapter and it shall be certified as correct by the official Auditor, and shall be submitted to the Executive Committee on the first day of its meeting prior to the Convocation of Grand Chapter. This statement shall be referred for examination and report to a sub-committee, which shall forthwith report to the Executive Committee thereon.

(28) The Grand Council shall prescribe the mode in which payments, authorized by Grand Chapter, shall be made out of the funds of Grand Chapter, and shall have power to authorize any necessary expenditures for the administration of its affairs.

(29) The Grand Scribe E. shall receive such compensation for his services as Grand Chapter may direct.

(30) He shall have charge of all the jewels, furniture, clothing, and paraphernalia of Grand Chapter, during its recess and present at its Annual Convocation a full and detailed report of his official acts.

THE GRAND SCRIBE N.

126.—It shall be the duty of the Grand Scribe N. to assist the Grand Scribe E. in the discharge of his duties, when called upon, at Convocations of Grand Chapter.

THE GRAND PRINCIPAL SOJOURNER

127.—It shall be the duty of the Grand Principal Sojourner to see that the Grand Senior and Grand Junior Sojourners perform their duties, and to report the names of all visitors who seek admission to Grand Chapter.

THE GRAND REGISTRAR

128.—The Grand Registrar shall perform such duties as he may be called upon to perform by the Grand Z.

THE GRAND LECTURER

129.—The Grand Lecturer shall have communicated to him by the Grand First Principal the authorized work of Grand Chapter. It shall be his duty, when requested by any constituent Chapter,

to visit the same, exemplify the work authorized by this Grand Chapter, and to report to the Grand Z. or Grand Chapter all who wilfully depart therefrom.

130.—Such Chapters shall pay for his services a sum not less than five dollars per day and actual travelling and hotel expenses.

131.—In no case shall any expense be entailed upon Grand Chapter for such service.

THE GRAND SENIOR SOJOURNER

132.—It shall be the duty of the Grand Senior Sojourner to allow none to enter Grand Chapter but those who come properly clothed as Royal Arch Masons and duly qualified.

THE GRAND JUNIOR SOJOURNER

133.—It shall be the duty of the Grand Junior Sojourner to see that the portals of Grand Chapter are properly guarded, and to report all visitors and communications from without to the Grand Principal Sojourner.

THE GRAND JANITOR

134.—It shall be the duty of the Grand Janitor to guard the entrance to Grand Chapter, to see that all visitors are duly vouched for before being reported, and that decorum is preserved at the entrance to Grand Chapter. He shall be paid the sum of ten dollars unless otherwise ordered by Grand Chapter.

HISTORIAN OF GRAND CHAPTER

135.—The Historian of Grand Chapter shall, from time to time, compile and preserve a record of all

matters connected with the history of Grand Chapter, and report annually to that body. (Sec. 19).

THE EXECUTIVE COMMITTEE

136.—(1) The Grand H. shall be the President of the Executive Committee, and in his absence the Grand J., who shall possess all powers of the Chairman. Should the Grand H. and Grand J. be absent, the Committee shall elect a Chairman pro tempore.

(2) The Committee shall meet the day before the Annual Convocation of Grand Chapter at the place appointed for holding the same, and at other times on the call of the Grand Z. or the President of the Committee.

(3) Seven members shall constitute a quorum. All questions shall be decided by a majority of votes. The presiding officer in case of a tie shall have a second vote.

(4) The Committee shall have authority to hear and determine all Masonic complaints, respecting Chapters or individual Companions, when regularly brought before it.

(5) The Committee may summon any of the officers of a Chapter or any Companion to appear before it for the purpose of any inquiry, and may order the custodian thereof to produce the warrant, books, papers and accounts of the Chapter. If such order be disobeyed and sufficient reason for non-compliance be not given, the offending Chapter or Companion may be suspended by the Committee and the proceedings shall be reported to Grand Chapter.

(6) A full report of the proceedings of the Committee, in all cases of complaint investigated by it, shall be preserved in a book to be kept for the purpose. The judgment of the Committee shall be reported to Grand Chapter.

(7) In case of any complaint affecting a member of the Committee, or the Chapter to which he belongs, such member shall withdraw while the Committee considers its decision.

(8) The Committee shall have charge of the finances of Grand Chapter, and it shall submit to Grand Chapter an estimate of expenses for the ensuing year.

(9) The Committee shall have full power to inspect all books and papers relating to the accounts of Grand Chapter, and may, by rules and regulations, prescribe the manner in which the money and accounts thereof shall be kept. Such rules and regulations shall be reported to Grand Chapter.

(10) The Committee shall annually appoint an auditor, who shall be a Chartered Accountant. His duties shall be to audit the books of the Grand Scribe E. and the books of the Grand Treasurer, quarterly at least, and report to the Grand Z. He shall receive such remuneration as Grand Chapter shall determine.

(11) The Committee may summon any officer, brother, or Companion, having possession of any books, papers, documents or accounts belonging to Grand Chapter, to appear before it and may give such directions as may be deemed necessary regarding them.

(12) The Committee shall have the direction of everything relating to the furniture and regalia of Grand Chapter.

(13) The Committee shall cause the necessary preparations to be made for the meetings of Grand Chapter.

(14) The Committee shall have the general care and investment of all funds of Grand Chapter.

(15) No recommendation, petition or representation of any kind shall be received by the Committee, unless it be in writing and signed by the person or persons addressing the Committee.

(16) All communications from the Committee to the Grand Z., to Grand Chapter, or other Committees, or any Chapter or Companion, shall be made in writing.

(17) The Committee shall proceed to the consideration of any special matter which may be referred to it by the Grand Z., or Grand Chapter, in preference to other business.

(18) The Committee may appoint sub-committees for specific purposes, who must report to the Committee.

(19) All transactions and resolutions of the Committee shall be entered in the Minute Book of the Grand Scribe E., who is ex-officio Secretary of the Committee. The minutes shall be read over at the close of each session and if approved signed by the presiding officer.

(20) At each Annual Convocation of Grand Chapter the Committee shall report all its proceedings.

137.—It shall be the duty of all Grand officers to perform such other duties appertaining to their respective offices, in conformity with this constitution, as shall from time to time be required by the Grand Chapter or the Grand Z.

FEEs, DUES AND COMPENSATION

138.—The Grand Chapter shall, from time to time, fix the amount to be paid into the treasury thereof, for the organization of, and as dues from, constituent Chapters.

139.—The fee for Exaltation to the supreme degree of the Holy Royal Arch, and which includes the preliminary degrees of Mark Master and Most Excellent Master, by the Chapters in this jurisdiction, shall be not less than twenty dollars. This is not, however, to extend to serving Companions, who may be exalted free of initiation fee, provided that a dispensation be first obtained from the Grand Z.

140.—The following shall be the fees and dues payable to the Grand Chapter, and which must in every case be sent to the Grand Scribe E., with the application or return to which they respectively relate, and for which every Z. of a Chapter is responsible :

| | |
|-------------------------------------------------------------------------------------|---------|
| For a Dispensation for a new Chapter..... | \$25 00 |
| For a Warrant of confirmation of ditto..... | 10 00 |
| For a Warrant of constitution for a new Chapter..... | 35 00 |
| For a new Warrant, to replace loss by fire or otherwise, properly certified..... | 10 00 |

| | |
|------------------------------------------------------------------------------------------------------------------------------------------------------------------------------------------------|---------|
| For a dispensation to confer any degree at a shorter interval than prescribed by the constitution..... | \$20 00 |
| For a dispensation authorizing a Chapter to receive and act upon a petition from a candidate for exaltation who resides outside the jurisdiction of the Chapter, payable by the Candidate..... | 10 00 |
| For every other dispensation..... | 1 00 |
| For registry of the name of every candidate for exaltation, and a Grand Chapter certificate..... (This is to be paid on the registration of every Mark Master Mason.) | 2 00 |
| For a Grand Chapter certificate to replace one lost..... | 1 00 |
| registry of a Companion joining a Chapter whose name has been previously registered..... | 0 50 |
| For registry of a Companion joining from another jurisdiction..... | 1 00 |
| For every member of a Chapter, payable annually to the 31st of Dec. in each year, except the first year of the organization of the Chapter..... | 0 50 |
| For Constitutions, each..... | 0 25 |
| For Ceremonies, each..... | 0 25 |

141.—Grand Chapter's financial year closes January 31st, that of the Chapters December 31st. The Annual Returns of the latter should, therefore, be in the hands of the Grand Scribe E. immediately after the final Convocation of the year.

142.—All Committees or Commissions appointed by Grand Chapter or by the Grand Z., except the Executive Committee, shall be paid their actual expenses, the amount thereof to be approved by the President of the Executive Committee.

143.—The dues of a Chapter which has suffered loss by fire shall not be remitted unless the furniture and jewels of the said Chapter shall have been insured at the time of such loss.

GOVERNMENT OF CONSTITUENT CHAPTERS

144.—All legally constituted assemblies of Royal Arch Masons are called Chapters, and regular bodies of Mark Masters and Most Excellent Masters are called Lodges.

145.—A "Chapter" shall mean a Chapter working under a warrant of this Grand Chapter. A "Chapter under dispensation" shall mean a Chapter working under a dispensation from the Grand Z., and possessing no powers or privileges other than such as are conferred by its dispensation.

146.—An "Affiliated Companion" shall mean a Companion who is a member in good standing of a regularly constituted Chapter.

147.—A Companion who has attained the rank of Past Z., under the jurisdiction of any Grand Chapter recognized by this Grand Chapter shall upon affiliation with any Chapter under the jurisdiction of this Grand Chapter be entitled to retain such rank.

148.—A "joining Companion" shall mean a Companion who has been initiated in a Chapter or a Chapter under dispensation, or who hails from a foreign jurisdiction acknowledged by this Grand Chapter, or who has been admitted a member of a Chapter or a Chapter under dispensation by affiliation according to this Constitution.

149.—The officers of a Royal Arch Chapter are a Z., H., and J., Treasurer, a Scribe E., a Scribe N., a Principal, a Senior and a Junior Sojourner, a Master of the First, Second, Third and Fourth Veils,

and a Janitor, and they shall severally hold office until their successors, respectively, have been regularly elected or appointed and installed or invested in their stead.

150.—The Z., H., and J. only are installed, the other officers are invested, and no installation or investiture of any officer can be performed by proxy. The investiture of an officer elected at the annual election but not invested at the annual installation shall revert back to the latter date.

151.—The Principals of the Chapter for the time being shall be the Master and Wardens respectively of Lodges of Mark and Most Excellent Masters, and the other officers according to seniority.

152.—Chapters shall be duly constituted, and the officers installed by one of the Grand Principals or the Grand Superintendent of a District, or by a Companion not below the rank of Z. duly authorized by the Grand Z.

153.—Every Chapter of Royal Arch Masons throughout the jurisdiction shall have a Warrant of constitution from the Grand Chapter, or a Dispensation permitting it to work, pending the issue of a Warrant, and no Chapter shall be deemed legal without such Warrant or Dispensation.

154.—Every warranted Chapter shall also have a seal with the name and number engraved thereon, an impression of which shall be deposited with the Grand Scribe E., and registered in his books.

155.—(1) Every application for a warrant to hold a new Chapter must be by petition to the Grand Z. signed by at least nine regularly registered Royal Arch Masons in good standing, and the Chapters to

which they belong, or formerly belonged, must be specified, also the place where it is intended to hold such Chapter, the days on which it is proposed to be holden, with the names of the Companions selected to fill the offices of Z., H., and J.

(2) The petition must be recommended by the nearest Chapter, and in case of there being more than two chapters in the jurisdiction, it shall require the recommendation of not less than one half of said Chapters, and be transmitted to the Grand Superintendent, who is to forward it, with his recommendation or opinion thereon, to the Grand Scribe E., to be submitted to the Grand Z.

(3) If the prayer of the petition be granted, the Grand Z. may issue a dispensation authorizing the Companions to meet as a Chapter until the next annual Convocation of Grand Chapter.

(4) If, in the opinion of the Grand Z. the recommendation of the nearest Chapter or Chapters be unreasonably withheld, he shall have the power to waive such recommendation. (Section 123, Subsec. 7.)

(5) Such Dispensation shall also give power to open and hold Lodges of Mark and Most Excellent Masters. (Section 98.)

156.—The petitioners shall undertake on the part of the proposed Chapter to conform strictly to the Constitution, laws, rules, regulations and orders of Grand Chapter.

157.—Chapters working under dispensation shall apply for a Warrant of confirmation at the first Annual Convocation of Grand Chapter held after

its organization, and shall send to the Grand Scribe E., for the consideration of Grand Chapter, a record of its work together with the Minute Book, Register, and books of the Chapter, which shall immediately be returned after examination. The Grand Superintendent shall also make a report on the progress made.

158.—Every Chapter shall be severally consecrated according to ancient custom by the Grand Z., or by a Past Grand Z., or Grand Superintendent appointed by him for that purpose.

159.—It is not legal to install or invest the Principals or officers of a Chapter under dispensation.

160.—A Chapter under dispensation may be represented in Grand Chapter at the Annual Convocation at which a Warrant is obtained, but not by a proxy.

161.—No Warrant for a new Chapter shall be granted until there is forwarded by the Grand Superintendent a certificate to the effect that the Chapter which is working under dispensation is provided with suitable furniture and regalia. (See Section 123, Sub-sec. 9.)

162.—Every Chapter has the power to make or amend its by-laws for its own private government, provided they be not incompatible with the general laws of the Royal Craft, or the Constitution of the Grand Chapter and they must be submitted in duplicate to the Grand Superintendent of the District, who shall forward them with his remarks thereon to the Grand Scribe E. for approval of the Grand Z.

163.—When any amendment shall be made in the by-laws of any Chapter, they shall, in the form of

certified extracts from the minutes, be submitted in duplicate, and approved in the same manner; and no by-law or amendment shall be valid until so submitted and approved.

164.—The regular day and hour of meeting of the Chapter shall be specified in the by-laws.

165.—The by-laws of a Chapter shall be fairly written or printed in a book, and shall be delivered to the Z. on the day of his installation. Every Companion shall subscribe to them when he becomes a member of the Chapter, and shall at all times have access thereto, and he shall be furnished by the Chapter with a printed copy on his exaltation or affiliation. A copy thereof, or any amendments thereto, shall be sent to the Grand Scribe E.

166.—Every new Chapter upon receiving its Warrant shall, at its next regular Convocation thereafter, appoint a committee to draft by-laws in accordance with the foregoing provisions, and shall proceed without unnecessary delay to adopt and ratify them and forward copies of the same in duplicate, duly certified by the Z. and Scribe E., within three months, to the Grand Z., through the Grand Superintendent of the District, for final approval.

167.—Such Chapter shall, in the interval, select by resolution, a code of by-laws of some existing Warranted Chapter, regularly approved, to assist in its better government, pending the adoption of

168.—The practice of transferring dormant Warrants from one place in the jurisdiction to another is prohibited.

169.—Warrants when surrendered, either as dormant, or suspended Warrants shall be held in the custody of the Grand Scribe E.

170.—The naming of a Chapter after a living person is prohibited.

171.—All Chapters shall hold their regular Convocation at least once in every three months. Lodges of Mark Masters and Most Excellent Masters may be opened and worked without the Chapter being first opened. Nine members to form a quorum.

172.—A Chapter of emergency may at any time be called by summons, on seven days' clear notice, by direction of the Z., or upon the request in writing of nine members of the Chapter. The business to be transacted shall be expressed in the summons, and none other than that specified shall be entered upon at that Convocation.

173.—Every Chapter shall annually elect by the vote of a majority of all the members present and voting the Z., H., and J., the Treasurer, the Scribes E. and N., the Principal Sojourner by written ballot, and by open vote an Examining Board of three Past Z's of whom the Z. may be one, two Auditors and the Janitor and at the next regular Convocation following such election, after the minutes shall have been read and approved, they shall be duly installed and invested by a Companion not below the rank of Z.

174.—A Chapter may, by by-law, provide that all or some of its officers shall be elected.

175.—Two or more Chapters may by a resolution hold the installation and investiture of officers in the same Chapter room, and at the same Convo-

cation, and for such purpose shall bring the minute books, by-laws and warrants to the place of installation.

176.—The Installation ceremony or any part thereof shall not be performed in public.

177.—Every Z. before being placed in the chair shall solemnly pledge himself to observe all the established usages and customs, to preserve the landmarks of the Order, and strictly to enforce them within his own Chapter.

178.—The Z. upon his installation shall appoint all the officers who are not elective, and all standing committees for conducting the business of the Chapter and he shall invest, or cause to be invested, the elected and appointed officers.

179.—An officer of a Chapter may resign his office, with the consent of the Chapter. Should any officer die, resign his office or become permanently incapable, by removal or otherwise, of performing the duties thereof, a successor shall forthwith be elected or appointed. The Z. of a Chapter, or, if that office be vacant, the H., or if he cannot act, the J., shall see that, in the case of a vacancy in an elective office, the necessary steps be taken for a new election, which shall be held at the next regular Convocation of the Chapter or a Convocation duly called for the purpose.

180.—If the office is an appointed one, then the Z. shall fill the vacancy at once.

181.—Provided that no Companion shall be entitled to past rank in any office, unless he has served a full term of twelve months in such office except as provided by section 15.

182.—No Chapter shall be opened or held except by nine Royal Arch Masons, seven of whom shall be members of the Chapter, (one of whom shall be a Principal). If, in the absence of the Z. and no Past Z. be present, the H., or in his absence the J., may declare the Chapter open for the transaction of business, but not for conferring the Royal Arch degree.

183.—No Companion below the rank of a Past Z. shall assume the Z's chair.

184.—While assembled, the Companions must wear the proper clothing of Royal Arch Masons.

185.—A summons for a regular Convocation must be served seven clear days before the meeting. The posting or delivery of a summons shall be regarded as good service thereof.

186.—Chapters working under a Dispensation shall not transact any business except that clearly expressed in the Dispensation creating them and shall always be governed by the constitution and regulations of the Grand Chapter.

187.—A Chapter of Royal Arch Masons or a Lodge of Mark or Most Excellent Masters must, when convened, be regularly opened and closed, and cannot be called off from one meeting to another.

188.—All business except the conferring of the intermediate degrees shall be done in the Chapter.

189.—No Companion shall be eligible for the Z's chair until he has served in the H's chair for twelve months, nor to the H's chair until he has served in the J's chair for twelve months, unless by dispen-

sation from the Grand Z. The Principals shall not be installed in a Warranted Chapter until they have been examined by a board of three or more Past Z's and until such board shall certify in writing to the installing Past Z. that they are fully familiar with their respective duties.

190.—The precedence of a Chapter is derived from the number of its Warrant as recorded. If the majority of members withdraw from a Chapter, the power of assembly exists with those remaining, provided their number be not less than nine ; but if less than nine remain, the Chapter becomes extinct, and its warrant, seal and records shall revert to Grand Chapter.

191.—A Chapter failing to convene for one year, or a Chapter failing to make returns (showing the names of all Companions exalted and those who have joined, or neglecting to register annually the name of all Companions exalted or those who have joined the Chapter), to Grand Chapter for one year shall forfeit its Warrant, but not until after the Principals thereof shall have been duly summoned to show cause to the contrary.

192.—Each Chapter shall make its returns and payments annually to the Grand Scribe E., and in case of failure for more than one year to make such returns and payments, after the same are due, or to hold a meeting, it may be summoned to show cause why it should not be suspended, or why its warrant should not be withdrawn or declared forfeited. No representative of any Chapter which has neglected to make its returns and payments to Grand Chapter for more than one year shall be permitted to vote

at any session thereof until such returns and payments respectively shall have been completed and made. (Sec. 87.)

193.—When a Chapter Warrant has been surrendered, it may, at discretion only, be restored by Grand Chapter, provided a petition be regularly presented and signed by not less than nine former members of such Chapter. The Warrant is the sole property of Grand Chapter. If the Chapter be dissolved, then the Warrant, seal and all the paraphernalia, and records of the Chapter shall immediately revert to Grand Chapter. To withhold any of such property is a Masonic offence, and renders the offender liable to prompt discipline.

194.—Each constituent Chapter has the power to discipline its own members and all Royal Arch Masons residing in its jurisdiction, as well as those who have taken any of the Capitular degrees.

195.—If any appeal be taken to Grand Chapter, the Scribe E. shall transmit to the Grand Scribe E. a true copy of all proceedings in the case.

196.—When a constituent Chapter recommends to Grand Chapter that a Companion be expelled, the recommendation shall be forwarded to the Grand Scribe E. at least twenty days before the next Annual Convocation of Grand Chapter, to be laid before the Executive Committee, which shall report thereon to Grand Chapter.

197.—Should the report confirm such recommendation and be adopted by Grand Chapter, the Companion shall be summoned to appear before the Executive Committee and Grand Chapter, at the next

Annual Convocation thereof, to show cause why he should not be expelled, and the Executive Committee when the matter comes up for consideration shall recommend to Grand Chapter such action in the matter as may seem just or expedient.

198.—Should such recommendation and papers reach the Grand Scribe E. in sufficient time to admit of the service upon the convicted Companion, the Grand Scribe E. shall serve a thirty day notice upon him by mailing it to his last known address, requiring him to show cause at the next Annual Convocation of Grand Chapter why he should not be expelled for his offence. (See Rule 61, respecting trials.)

199.—The majority of the members of a Chapter, when congregated, have the privilege of giving instructions to their principals or other representative before the Convocation of Grand Chapter.

200.—A resolution once disposed of by a Chapter cannot be reconsidered or rescinded without notice thereof being given at a preceding Convocation and included in the summons to the members.

201.—Every Companion in good standing is entitled to one vote and is eligible for any office in the Chapter except that of Z. or H.

202.—None other than the authorized work is allowed to be practised or administered in any Chapter.

203.—All voting in a Chapter shall be by a show of hands, except in cases where the Constitution requires a ballot; or where the Chapter shall, by show of hands taken without debate, decide that a ballot be taken.

204.—No Chapter has the power to adjourn from day to day.

205.—If any Companion behave in such a manner as to disturb the harmony of the Chapter, be admonished by the Z., and persist in his irregular conduct, the Z. may order him to leave the Chapter and may suspend him if he disobey such order, if his offence, in the opinion of the Z., justifies suspension. Such suspension, with the reason therefor shall be forthwith reported by the Z. to the Grand Superintendent of the District and shall last only until action is taken by him.

206.—No Companion shall violate the secrecy of the ballot on candidates for exaltation or membership, by stating how he voted or intended to vote (except as provided in Section 207), or by endeavoring to ascertain how a Companion voted, or by revealing a Companion's vote.

207.—In the case of a Masonic trial, where the charge laid relates to a ballot for exaltation or membership, any Companion shall be at liberty to disclose how he voted in that particular case.

SUSPENSION

208.—(1) A Chapter has jurisdiction over its own members wherever they may reside, and non-affiliation of a Companion is no bar to his suspension.

(2) A Chapter cannot deprive a member of his privileges until after due trial and conviction, except temporarily as hereinbefore provided.

(3) Suspended members are deprived of all their Royal Craft rights and privileges.

(4) The suspension of a Chapter places all its members under Masonic disability, except by dispensation to be granted by the Grand Z.

(5) If any member shall be under suspension from his Chapter, or shall withdraw from it without having complied with its by-laws, or with the general regulations of the Royal Craft, he shall not be eligible for admission to any other Chapter.

(6) A Companion suspended by a Chapter must, in order to obtain his certificate of standing, apply to that Chapter for restoration in the usual manner, as laid down in the rules for the government of Masonic trials.

(7) A Companion, who has been suspended, or expelled, by his lodge, the Grand Master, or Grand Lodge, for unmasonic conduct shall also stand suspended from his Royal Craft privileges while the craft discipline continues in force.

CHAPTER BOOKS AND RECORDS

209.—Every Chapter shall, in addition to the necessary account books, keep a minute book and a book in which the Scribe E. shall enter the names of the members of the Chapter, the dates of their proposal, admission or exaltation, their ages as nearly as the same can be ascertained, titles, professions, or trades and the dates of their deaths, resignations, suspensions, expulsions and restorations.

210.—Every Chapter shall keep a book in which the members attending at each Convocation shall sign their names before entering the Chapter ; and a similar book or portion of the same book, for visi-

tors, who are in like manner to enter their names, Masonic rank, and the name of their mother Chapter, or the Chapter from which they hail.

CHAPTER SEAL

211.—Every Chapter shall have a seal to be affixed to all documents proper to be issued which require to be sealed. The seal shall not be affixed to any documents other than such as are issued by resolution of the Chapter, or required by the Constitution, which latter are as follows :

- (1) Annual returns of work.
- (2) Annual returns of officers installed.
- (3) By-laws.
- (4) Amendments to by-laws.
- (5) Certificate of adoption of by-laws.
- (6) Copy of the summons giving notice of motion to consider by-laws or amendments, which must accompany same when forwarded for confirmation by the Grand Z.
- (7) Applications for benevolence.
- (8) Annual return of moneys expended for benevolence.
- (9) Recommendation for a new Chapter.

212.—An impression of the seal or of any amendment thereof shall be sent to the Grand Scribe E.

213.—Every Chapter shall annually send a list to the Grand Scribe E. of the names of the Principals and the Past Z's of the Chapter who are entitled to attend Grand Chapter. No Companion shall be permitted to attend the Grand Chapter unless his

name appears in such list. Should the name of any Past Z. be omitted from the list in error if he can be vouched for by any member of his Chapter or by Grand Chapter he may be admitted.

214.—A Chapter may require from its Treasurer or Scribe E., or both, security for the funds committed to their care.

THE Z.

215.—(1) The Z. is responsible for the due observance of the laws relating to constituent Chapters, and that all returns are promptly made and fees and dues paid to Grand Chapter, and is bound to produce all books, minutes and accounts when required by lawful authority.

(2) He shall see that there is kept by the Scribe E. a proper minute book and a register, in which are recorded the names of all candidates, their ages, residences and professions, with dates of proposal, balloting and receiving the several degrees.

(3) Also that a book be kept by the Treasurer in which are recorded the receipts and disbursements of all moneys and accounts between the Chapter and individual members, and the Chapter and Grand Chapter and other books necessary for the welfare of the Chapter. (See Sections 266-272.)

(4) He shall sign all warrants, cheques or orders for the payment of moneys.

(5) He has not the power to suspend the declaration of the ballot.

(6) He shall be held responsible for the reading of the proceedings of the Annual Convocation of Grand Chapter which are to be in his charge and preserved.

(7) The Z. of every Chapter shall cause the Scribe E. to send a copy of every summons issued to the Companions of his Chapter, to the Grand Z., the Grand Scribe E., and to the Grand Superintendent of the district in which the Chapter is situated. He shall also cause to be sent to the latter, immediately after the installation of the officers, on a form to be supplied by the Grand Scribe E., a certified list of the officers of his Chapter, elected and appointed. He shall also cause to be sent to the Grand Scribe E. prior to the Annual Convocation of Grand Chapter, the name of the proxy for Grand Chapter, if any has been appointed, within the period mentioned in section 79.

THE H.

216.—The H. of the Chapter for the time being shall be the Senior Warden of the Lodge of Mark or Most Excellent Masters, and may confer the subordinate degrees, the Z. or a Past Z. administering the CB. He shall act as chairman of the Executive Committee of the Chapter, and fulfil any other duties required of him by the Z.

THE J.

217.—The J. of the Chapter for the time being shall be the Junior Warden of the Lodge of Mark or Most Excellent Masters, and may confer the subordinate degrees, the Z. or a Past Z. administering the OB. He shall act as chairman of the Executive Committee of the Chapter in the absence of the H., shall have the care of the regalia and jewels of the Chapter, and fulfil any other duties required of him by the Z.

THE TREASURER

218.—The Treasurer shall have charge of the funds, securities, vouchers and financial concerns of the Chapter. He shall keep books as specified, receive all moneys and pay out the same only by authority of the Chapter, certified by the Z., countersigned by the Scribe E., and shall deposit all moneys in a chartered bank, when possible in the name of the Chapter. He shall enter in proper books an account of all moneys received and paid by him on account of the Chapter.

THE SCRIBE E.

219.—The Scribe E. shall keep a record of all the transactions of the Chapter, send a copy of every summons issued for all Convocations to the Grand Z., the Grand Scribe E., and Grand Superintendent of the District, make all returns required by Grand Chapter, as set out in Section 191, collect and pay over on receipt all moneys that may be paid him on account of the Chapter within thirty days of the receipt thereof. He shall also keep an itemized account of the receipts of the Chapter, and all accounts between each member and the Chapter. He shall enter in proper books an account of all moneys received by him on account of the Chapter and how disposed of by him.

THE AUDITORS

220.—The accounts of the Chapter shall be duly audited at least once a year by the Auditors who shall report such audit to the Chapter on the day appointed for the installation and investiture of the officers and prior to such installation.

THE JANITOR

221.—The Janitor shall be elected by the members of the Chapter and may after due notice at any time be removed for cause by a majority of the Companions present at any regular Convocation. He shall see that every Companion and visitor signs his name in the attendance book and is properly clothed before entering the Chapter. (See Section 268.)

OTHER OFFICERS

222.—The power and duties of the aforesaid officers and all other officers shall conform to customary usage, as prescribed by the ceremony of installation, the Constitution of Grand Chapter, and the by-laws of the constituent Chapter.

223.—The officers of a Chapter shall, when summoned to do so for the purpose of an enquiry, appear before the Grand Z., the Grand H., the Executive Committee, the Grand Superintendent or any board, committee or commission lawfully constituted.

MEMBERSHIP

224.—No candidate for the degrees, (which include the intermediate degrees) can be received by a Chapter unless the applicant has resided for one year immediately previous to the date of his petition in the jurisdiction of the Chapter to which he seeks admission, or produces a certificate of character and consent from the Chapter nearest to the place of his previous residence.

225.—He shall also furnish evidence of his good standing, and he must be a Master Mason for at

least three calendar months before applying for advancement and exaltation, except the period be shortened by dispensation of the Grand Z., which shall not, however, be for a period less than four weeks. nor until he has presented a petition, giving his name, age, residence and profession, his mother lodge, or the lodge of which he is a member, and is recommended by two Companions, being members of the Chapter.

226.—He must be regularly proposed at one Convocation of the Chapter, and a committee of the members appointed to enquire into his character.

227.—Notification of his proposal shall then be sent to all members of the Chapter, in the summons for the next regular Convocation.

228.—When this has been done, if the report of the committee, be favorable, he may be balloted for, and, if approved, admitted.

229.—If the report be unfavorable, he shall be deemed a rejected candidate, and cannot be proposed or balloted for in that or any other Chapter within twelve months of the time of his rejection.

230.—No brother shall be exalted to the Royal Arch degree unless he shall have received the degrees of Mark Master and Most Excellent Master, and has selected and handed in his mark to the Scribe E., as prescribed by section 271 and unless he has been a Master Mason three calendar months before applying for and receiving these degrees. (Sec. 225.)

231.—All balloting must take place in the Royal Arch degree.

232.—No Companion shall be admitted a joining member unless he gives proof of his good standing, or without being regularly proposed and seconded by two members of the Chapter at a regular Convocation, and his name, age, residence and the Chapter of which he is at the time, or was, a member, shall have been sent to all members of the Chapter, when, if the report of the Committee on Character be favorable, he may be balloted for at the next Convocation. Chapters may, by by-law, define the period in which an accepted candidate for Exaltation or Companion for affiliation, can present himself for the privileges of the ballot; provided that such period shall not exceed twelve months from the date of acceptance. The limit of time having expired, a fresh petition and ballot are necessary.

233.—No Chapter shall admit a candidate who resides within the jurisdiction of another Chapter without the written consent (such consent to be obtained by open vote after notice thereof has been given at the previous Convocation and regularly communicated to all the members) of such other Chapter, signed by its Z. and Scribe E.

234.—The jurisdiction of every Chapter, except in cities and towns where there is more than one Chapter, extends half way from its place of meeting in a straight line to the nearest Chapter. But it is expressly understood that the present territorial jurisdiction of any Chapter shall not be affected hereby. In such cities and towns, Chapters have concurrent jurisdiction, and consent for the formation of a new Chapter in their vicinity must be given by a majority of such Chapters. If in the

opinion of the Grand Z. the consent of any Chapter is unreasonably withheld he shall have power to waive such consent.

235.—When any Companion from without the jurisdiction of the Grand Chapter of Canada presents himself as a Royal Arch Mason, for affiliation and produces satisfactory proof of his having been exalted to that degree, each and every Chapter shall have liberty to and may confer the degree of Mark Master, and Most Excellent Master on such Companion who has not heretofore received them, free of charge except a fee to Grand Chapter for registry and certificate.

DUTIES TO GRAND CHAPTER

236.—Every Chapter shall, annually, at the times ordered by the Grand Chapter, make returns to the Grand Scribe, E. of all Companions who have been installed as Z., H., and J., with the date of their installation ; and of any installed Principals who shall have ceased to be members of the Chapter. Also a return specifying the names, ages, professions and residences and the dates of exaltation of all Companions exalted, together with the dates of their taking the prior degrees of Mark Master and Most Excellent Master ; and when any Companion exalted in foreign parts, whose name is not previously registered in the books of Grand Chapter, shall join a Chapter as a member his name, age, profession, residence and mother Chapter, shall be likewise returned, and a like fee shall be paid. The name of each candidate must be included in the return as soon as he has received the degree of Mark Master.

237.—The names of all Companions who may join from any other Chapter must be returned and the Chapter in which they were exalted specified.

238.—Also a return of all members who may have been removed from membership in the Chapter by demission, suspension, expulsion or death.

239.—Every Chapter shall, within one month after a candidate has been exalted to the degree of the Royal Arch, send a return to the Grand Scribe E., giving the date, as well as the dates when he received the degrees of the Mark Master and Most Excellent Master, for the purpose of having the name registered on the books of Grand Chapter, when a certificate under seal, signed by the Grand Scribe E. shall be issued

240.—The fees for registration and certificate must in every instance be sent with the return to the office of the Grand Scribe E. On the delivery of the certificate by the Scribe E. of the Chapter, the Companion receiving it must affix his signature on the margin, without which it will not be valid. Every candidate admitted to a Chapter during the year, whether he has been exalted or not, must be reported to the office of the Grand Scribe E. on the Annual Return with fee for registration and certificate.

241.—No Companion shall be admitted as a visitor to any Chapter unless he is personally vouched for, or unless after strict examination by two skilled Companions he is found worthy, and shall have duly registered his name in the visitors' book. This shall not exclude Mark Master or a Most Excellent Master from the right to visit a lodge while working

any degree to which they may have attained. All visitors are subject to the by-laws of the Chapter.

242.—No unaffiliated Royal Arch Mason has a right without permission to visit any Chapter in the place where he resides more than once during the period of his non-affiliation.

243.—A Companion residing within this Grand Jurisdiction is not required to affiliate with the Chapter nearest his place of residence, but may be admitted a member of any Chapter that will receive him.

LIFE MEMBERSHIP

244.—Constituent Chapters may, by by-law, admit their members to life membership on such terms as the Chapter may determine by by-law, and for each such life member such Chapter may pay into Grand Chapter the sum of five dollars, which payment shall exempt the Chapter from the payment of further dues to Grand Chapter on his behalf.

245.—Upon such life member withdrawing from the Chapter of which he originally became a life member and joining any other Chapter, such other Chapter shall not be obliged to pay any annual dues to Grand Chapter on his account, nor, in case he become a life member of such other Chapter, shall it be obliged to pay a second fee therefor to Grand Chapter.

246.—Life members shall be entitled to all the privileges of, and shall be amenable to discipline in the Chapter, in the same manner as ordinary members.

HONORARY MEMBERS

247.—Chapters may elect any Companion who has rendered service to the Royal Craft an honorary member by a three-fourths vote of the members present by ballot, but such honorary membership does not confer the right of voting unless so declared and conferred by unanimous ballot at the time of such election. Notice of proposal for honorary membership must be given at one Convocation and the name inserted in the summons for the next Convocation. Honorary members are to be included in the annual return to Grand Chapter, and similar dues as for ordinary members must be paid on their behalf by the Chapter, or the fee may be commuted as in the case of a life member. (See Section 244.)

248.—Whenever a member of a Chapter desires either by personal application or in writing to withdraw from a Chapter, he shall be furnished, on payment of all dues owing, with a demit in form as authorized by Grand Chapter. This certificate shall be produced at any other Chapter with which the member desires to affiliate, previous to the ballot being taken.

249.—If a demitted Companion desires to renew his connection with a Chapter, he can only do so by petition and ballot as provided in the case of an application for affiliation. Should any petitioner for affiliation be rejected he may renew his application to the same or to any other Chapter in the jurisdiction at any time.

250.—Every member of a constituent Chapter neglecting to pay his dues for one year shall, after due notice has been sent to his last known address,

and after trial, be liable to punishment by suspension. If the Companion does not appear or a sufficient reason, in the opinion of the Z., be not given for his absence, he shall then and there be declared suspended by the Z. (See Rules as to Trials 67-72.)

251.—When a member is suspended for non-payment of dues he shall, on payment of arrears owing at the date of his suspension, be restored to good standing without ballot.

252.—By a vote of the Chapter the dues of any member may be remitted provided that notice of such motion has been given at a preceding Convocation, and the members notified upon the summons with the amount proposed to be remitted. This shall also apply to members who have been suspended for non-payment of dues, and such motion, if adopted, shall restore those members to good standing without ballot.

253.—All applications for Grand Chapter certificates must be promptly made through the Grand Scribe E., by the Scribe E. of the constituent Chapter concerned, and no Chapter shall grant any certificate of any kind except that of demit or withdrawal from membership, which shall be furnished without charge.

254.—The Scribe E. of every Chapter shall report by first mail to the Grand Scribe E. the death of any Grand officer, Past Grand officer or Royal Arch Masons, members of his Chapter, or residing within the jurisdiction of his Chapter, and on the receipt of such information the Grand Scribe E. shall notify the Grand Z., so that, if advisable, the Grand Chapter may be represented at the funeral.

BALLOTING

255.—All balloting for candidates for admission or affiliation shall take place in the Royal Arch degree.

256.—None but Companions, members of the Chapter in good standing, can vote for the admission of candidates or affiliation of Companions.

257.—There shall be but one ballot for the several degrees conferred under the Chapter warrant, and no Companion shall violate the secrecy of the ballot (except as provided in Section 207), under penalty of censure in open Chapter for the first offence, and for a second offence deprivation of all his Royal Arch privileges.

258.—A proposition for membership may be withdrawn, with the consent of the Chapter, before the committee has reported upon it, but after a ballot has been ordered it cannot be postponed, neither can it be reconsidered. A ballot must be taken on every petition after it shall have been referred to a committee and reported upon favorably, provided the Chapter has jurisdiction, and the applicant is eligible.

259.—No candidate shall be admitted, or Companion received as an affiliated member, if, on the ballot being taken, two black balls appear against him. A Chapter may, however, by by-law, require the unanimous consent of the members present.

260.—Should objection be made to the advancement of a candidate, after he shall have received one of the subordinate degrees, it shall be the duty of

the Z. to order the Companion so objecting to file written charges forthwith.

261.—The Chapter, as soon as convenient, shall then proceed to investigate the said charges, and if the same shall not be proven, the degree shall be conferred upon the candidate as if no charges had been made.

262.—If the charges be proven, the candidate shall be considered rejected and shall not apply again under three months from the time of rejection, and then only to the Chapter rejecting him.

263.—Provided, however, that in case the Companion making the objection shall neglect or refuse to file charges and specifications within thirty days, then the Chapter may proceed to confer the degrees, as if no objection had been made.

PUBLIC PROCESSIONS

264.—No public procession or festival where Royal Arch clothing is proposed to be worn shall be allowed without a dispensation from the Grand Z.

265.—If any Chapter or Companion shall take part in any public procession in Royal Arch clothing without a dispensation, such Chapter or Companion shall be suspended by the Grand Z. until the latter or Grand Chapter shall determine the matter. A Masonic funeral, and the laying of a corner stone, being Craft functions solely, Royal Arch clothing is not permitted to be worn.

CHAPTER BOOKS

266.—In each Chapter shall be kept a book or books in authorized form, in which shall be register-

ed the names of all Companions who shall be installed as Z., H.; and J., together with the names of all other officers of the Chapter. In these books shall also be kept a list of the members, giving the name age, mother lodge, present lodge, date of receiving Mark Master and Most Excellent Master and Royal Arch degrees, or date of affiliation, and also dates of demission, suspensions, expulsion or death.

267.—In each Chapter shall be kept a minute book in which must be entered the proceedings of each Convocation in the form prescribed by Grand Chapter. (See Appendices.) The minutes must include the names of all visitors who are present at the Convocations.

268.—A members' and visitors' register, which shall contain the signatures of every member or visitor entering the Chapter must be placed at a convenient situation near the entrance. In the case of visitors the name of each visitor, his Chapter, its number, location and jurisdiction must be stated. The Janitor shall see that all these entries are properly made. (See Section 221.)

269.—A Scribe E's book, in which shall be shown an itemized account of the receipts and disbursements of the Chapter, and also an account between each member and the Chapter.

270.—A Treasurer's cash book, in which shall be shown an itemized account of the receipts and disbursements of the Chapter.

271.—A Book of Marks, in which shall be kept a copy of the Marks selected by the brethren provided, however, that all such marks must be in

proper form and composed of lines, or a combination of lines, in the forms of squares, angles, triangles, or any other forms in which straight lines can be composed. The use of crests, coat of arms as Marks, being non-Masonic, are prohibited. (See Section 230.)

272.—Each Chapter shall keep a book, in which shall be copied the by-laws made for the government of the Chapter, with the signature thereto of each member.

ROYAL ARCH REGALIA

273.—The Royal Arch Apron to be worn by the Companions is to be of white lambskin or white kid-skin, from fourteen to sixteen inches wide, and from twelve to fourteen inches deep, with an indented crimson and purple border two inches wide, the crimson part pointing to the centre of the apron, the border of the flap or lappet to be only one inch wide ; in the centre of the flap is to be a triangle of white silk or satin surrounded with gold border, and within the triangle three taus united to gold-spangled embroidery, and two gold tassels are to be suspended by white ribbons two inches wide, coming from under the flap. The linings and strings shall be white.

274.—The apron for Principals and Past Z's of constituent Chapters, shall have the triangle, the linings and strings, and the ribbons suspending the tassels of scarlet, and may be trimmed with gold lace and fringe.

275.—The apron for present and past officers of Grand Chapter shall have an indented crimson and

purple border four inches wide, the border of the flap to be two inches wide, the triangle, linings and strings, and ribbon suspending the tassels to be purple. For elected officers emblem of office to be embroidered in the centre of apron within a wreath, trimmed with gold lace and fringe. For appointed officers emblem in centre of apron within a circle, trimmed with gold lace and fringe.

276.—The jewel of office worn by present and past Grand Z's may be suspended from a chain collar of gold, or other metal gilt; that of other Grand Principals, from a ribbon collar of three colors, viz.: purple, crimson and pale blue, four inches wide, edged with gold lace and fringe. Those of other elected officers a similar ribbon collar edged with gold lace, no fringe. Appointed officers a similar ribbon collar edged with gold lace of narrower width.

277.—The jewel of office worn by the Principals and officers of constituent Chapters is to be suspended by a crimson collar, four inches wide.

278.—The aprons, collars and jewels of officers of lodges of Mark Masters and Most Excellent Masters, which are not independent bodies, may be those of the Chapter, according to rank, and Companions may wear their Royal Arch clothing therein.

279.—The jewel of the Order is to be worn by Companions on the left breast, suspended by a narrow white ribbon; but for present and past officers of the Grand Chapter, it may be tricolor, corresponding with the collar; and for Principals and Past Z's of constituent Chapters, crimson, also corresponding with the collar; all jewels to be of gold or gilt.

280.—The jewel of a Mark Master is to be in the form of a keystone. On the front the owner's Mark is to be engraved within a circle with the letters round it, H.T.W.S.S.T.K.S. On the reverse side may be the owner's name and that of his Chapter, with the date of his advancement. The jewel should be a white cornelian stone, but may be of gold or silver or mother-of-pearl, and suspended by a narrow light blue ribbon with crimson edges.

281.—No honorary or other jewel or emblem shall be worn which shall not appertain to, or be consistent with, those degrees which are recognized and acknowledged by the Grand Chapter, except those of Grand Representatives and Military Orders or Insignia given by the Sovereign or his allies.

JEWELS

282.—The following are the jewels of the officers :
Grand Z.

A crown irradiated between the legs of a pair of compasses, the points resting on a triple triangle.

Grand H.

The All-Seeing Eye irradiated between the legs of a pair of compasses, the points resting on a triple triangle.

Grand J.

The Volume of the Sacred Law irradiated between the legs of a pair of compasses, the points resting on a triple triangle.

Past Grand Principals.

The jewel appertaining to their respective offices in a circle.

Grand Superintendents of Districts.

A small triangle irradiated in a double triangle, enclosed within a circle on a triangle.

Past Grand Superintendents of Districts.

The same jewel, omitting the small triangle, irradiated.

Grand Treasurer.

The key within a triangle.

Grand Scribes E. and N.

Cross pens with a tie within a triangle.

Principal Sojourners of Grand and Constituent Chapters.

A square irradiated within a triangle.

Grand Registrar.

A scroll on a pen, within a triangle.

Grand Lecturer.

A closed book.

Assistant Sojourners of Grand and Constituent Chapters.

A square within a triangle, not irradiated.

Grand Sword Bearer.

Cross swords, with a tie, within a triangle.

Grand Masters of Veils.

Cross batons, with a tie, within a triangle.

Grand Standard Bearer.

A standard with a triple tau in the centre, within a triangle.

Grand Director of Ceremonies.

Cross wands with a wreath, within a triangle.

Grand Organist.

A lyre within a triangle.

Grand Pursuivant.

Cross swords and wand, with a coat of arms, within a triangle.

Grand Stewards.

A triangle.

Grand Janitor.

A sword.

Past Grand Officers.

The jewel appertaining to their respective offices set in a circle, except Past Grand Superintendents.

CONSTITUENT CHAPTERS

283.—Z.

A crown irradiated, within a triangle.

H.

An All-Seeing Eye, irradiated within a triangle.

J.

The Volume of the Sacred Law, irradiated within a triangle.

Past Z's.

The same as Z., but within a circle.

Officers of Constituent Chapters.

The emblems appertaining to their office as in Grand Chapter, within a triangle.

ROBES

284.—Z.

A scarlet robe trimmed with ermine.

H.

A purple robe.

J.

A blue robe.

Scribes E. and N. and Sojourners.
White robes.

AMENDMENTS

285.—The Constitution of Grand Chapter may be amended or altered at any Annual Convocation thereof by a two-thirds vote of the Companions present, provided that notice in writing, stating distinctly the proposed amendment or alteration, shall have been given at the preceding Annual Convocation, or shall have been sent to the Grand Scribe E. before the 30th day of November preceding the Convocation at which the motion is to be considered, and a copy of the proposed amendment sent to each Chapter prior to the 31st day of December following and also published in the notice paper.

286.—Any amendment to the Constitution which has been rejected by Grand Chapter shall not be reconsidered at any time within five years after such rejection, except leave be given by Grand Chapter by a two-thirds vote, such vote to be taken without debate.

287.—All Constitutions, or parts of Constitutions, edicts or resolutions, bylaws and rules of order heretofore adopted by the Grand Chapter, inconsistent with this Constitution, are hereby repealed.

RULES OF ORDER

288.—(1) The following are the regulations for the government of Grand Chapter during the time of business.

(2) Officers and members must be properly clothed in accordance with their rank, and on the call to

order; the Grand Chapter shall be opened in proper form.

(3) The minutes of the last Annual Convocation and emergent Convocations shall be read and confirmed.

(4) The Grand Z. shall deliver his annual address.

(5) The reports of the Grand H., Grand J., and Historian, if any, shall be read.

(6) The Grand Treasurer and the Grand Scribe E., shall make their annual reports.

(7) The annual reports of the Grand Superintendents of the Districts shall be presented.

(8) The reports of the Executive Committee on Credentials, (if ready) Warrants, Printing and Supplies, Finance, Benevolence, Grievances and Appeals, Condition of Capitular Masonry, Constitution, Laws, Jurisprudence, the Fraternal Dead, and Fraternal Correspondence, and reports of any special committee appointed shall be read.

(9) When the presiding officer shall call Grand Chapter to order, there shall be general silence.

(10) All Companions shall keep their seats, except the Grand Scribes, the Grand Principal Sojourner, and his Assistants, the Grand Director of Ceremonies, the Grand Stewards, who are allowed to move from place to place in the discharge of their duties.

(11) No Companion shall be permitted to sit in Grand Chapter as a visitor without unanimous consent.

(12) All resolutions shall be in writing.

(13) No Companion shall speak twice to the same question, unless in explanation, or the mover in reply, and no visitor shall speak to any question, unless requested or permitted to do so by the presiding officer.

(14) When a Companion speaks he shall rise and remain standing, addressing himself to the Grand Z., and shall not be interrupted except on a point of order.

(15) If any Companion shall have been twice called to order by the presiding officer and shall, nevertheless, be guilty of a third offence at the same meeting, the presiding officer may command him forthwith to quit the Grand Chapter, and he shall not again be admitted to that Convocation.

(16) Whoever shall be so unmasonic as to hiss at a Companion, for what he has said, shall be forthwith solemnly excluded from the Convocation, and declared incapable of being a member of any Grand Chapter, till at another Annual Convocation, he publicly owns his fault and grace be granted.

(17) If any member of this Grand Chapter shall be guilty of disorderly behaviour, he shall for the first offence be called to order, for the second reprimanded by the presiding officer, and for the third he shall be suspended from a seat in the Grand Chapter during the pleasure of the same.

(18) When a motion is under debate, no motion shall be entertained except to lay on the table, to indefinitely postpone or to amend, and these motions shall take precedence in the order named.

(19) An amendment must be germane. One that entirely changes the subject of the original motion

shall not be entertained as an amendment or substitute for the motion under debate.

(20) No Companion, except one who has voted with the majority, shall be allowed to move for a re-consideration, and in this connection the word "majority" shall apply to the vote by which the question was first decided.

(21) After a motion has been stated by the presiding officer, it becomes the property of Grand Chapter, but may be withdrawn at any time previous to amendment, unless objected to by a member.

(22) There shall be no debate upon any question after it has been put by the presiding officer.

(23) All petitions, communications, motions, resolutions, and other proceedings shall be couched in respectful language.

(24) When the Grand Z. or presiding officer is addressing Grand Chapter or a Companion speaking to a question, they shall not be interrupted by other Companions talking or passing between the speaker and the chair.

(25) Votes may be taken by a show of hands, unless a vote of Chapters is called for, which must be supported by the representatives of, at least, five Chapters.

FORMS

Application for a Warrant of Constitution

TO THE MOST EXCELLENT GRAND PRINCIPALS AND THE GRAND
CHAPTER OF ROYAL ARCH MASONS OF CANADA

We, the undersigned, being registered Royal Arch Masons of the Chapters mentioned against our respective names, pray for a warrant of constitution empowering us to meet as a regular Chapter on the ——— day of every month at the ——— (village, town or city) of ———, in the County of ———, Province of ———, to be called ——— Chapter, and there to discharge the duties of Royal Arch Masonry in a constitutional manner, according to the forms of the order and the laws, rules and regulations of Grand Chapter, and we have nominated and do recommend Companion ——— to be First Principal Z. Companion ——— to be Second Principal H., Companion ——— to be Third Principal J.

The prayer of this petition being granted, we promise strict conformity to the ancient landmarks of the order and the laws, rules and regulations of the Grand Chapter.

Dated at ———, etc., etc.

[To be signed by at least nine certified R. A. Masons in good standing.]

N.B.—The application should be supported by the written recommendation of the Grand Superintendent of the District in which the new Chapter is to be located, and also by the certified sanction of the nearest existing Chapter approved in open Convocation (See Section 155.)

Application for Exaltation

TO THE EXCELLENT

The Principals, Officers and Companions of the
 _____ Chapter of Royal Arch Masons, No. _____.

I, _____ of the _____ in the County of _____, Province
 of _____, occupation _____, age _____, a Master
 Mason raised in _____, Lodge No. _____, under the jurisdiction
 of the Grand Lodge of _____, respectfully offer myself as a
 candidate for advancement to the degrees of Mark Master and
 Most Excellent Master and exaltation to the supreme degree of
 the Holy Royal Arch in _____ Chapter No. _____. I hereby
 declare that I have resided within the jurisdiction of said Chapter
 for one year immediately prior to the date of this application,
 that I am in good standing as a Master Mason, and that I have
 not been rejected by this or any other Chapter within the pre-
 ceding twelve months.

Dated at _____ this _____ day of _____, 19____.

Recommended by

C.D. _____.

E.F. _____.

(Signed) A. B.

[Residence] _____.

Name of Applicant in full _____.

Application for Affiliation

TO THE EXCELLENT

The Principals, Officers and Companions of
 _____ Chapter of Royal Arch Masons, No. _____.

I, _____ of the _____ of _____ occupation _____,
 age _____, a Royal Arch Mason exalted in _____ Chapter
 No. _____, under the G. R. of _____, do hereby declare that
 I am a Companion in good standing in the Royal Craft, that I
 was last a member of _____ Chapter No. _____, G. R. _____,
 and am now desirous of becoming a member of your Chapter,
 subject to the rules and regulations to which I promise a strict
 compliance.

Dated at _____ this _____ day of _____, 19____.

(Signed) A. B.

[Residence] _____.

Recommended by

C.D. _____.

E.F. _____.

Name of Applicant in full _____.

Certificate of Withdrawal from a Chapter

To all Royal Arch Masons to whom these presents shall come,
greeting :

This is to certify that Companion _____, who hath signed his name in the margin hereof, is a regular Royal Arch Mason in good standing at this date, and is, at his own request, regularly discharged from membership in _____ Chapter, No. _____, under the jurisdiction of the Grand Chapter of Canada.

Given under our hands and the seal of the Chapter at _____
this _____ day of _____, 19____.

SEAL

_____ Z.

Scribe E.

Proxy for a Chapter Appointing its Delegate to Grand Chapter

THIS IS TO CERTIFY

That at a _____ Convocation of _____ Chapter, No. _____, held on the _____ day of _____, A.D. _____, Companion _____ was delegated to represent the said Chapter at the Annual Convocation of Grand Chapter, to be held at _____, on the _____ day of _____, A.D. _____, and there to perform any and all acts which could be done by the duly qualified officers of the said Chapter were they personally present; promising to ratify and confirm all that the said delegate may lawfully do under such authority.

Given under our hands and the seal of the _____ Chapter
at _____, this _____ day of _____, 19____.

SEAL

_____ Z.

Scribe E.

Form of Entry of Transactions in Minute Book of a Private Chapter

Masonic Hall, _____.

Minutes of the regular Convocation of _____ Chapter,
 No. _____, held on _____ the _____ day of _____
 A.D. _____.

Present

| | |
|------|--------|
| Z. | Treas. |
| H. | P.S. |
| J. | S.S. |
| S.E. | J.S. |
| S.N. | Jan. |

(The names of all members present and the names of visiting Companions, with their Chapter and location.)

Opening Chapter

The Chapter was opened in prescribed form at _____ o'clock p.m.

Minutes

The minutes of the last regular Convocation (and subsequent Emergent Convocations, if any) were read and confirmed.

Executive Committee's Report

The report of the Executive Committee was presented by Ex. Comp. _____ H. (or J.).

Reports General

The Committee appointed to (here state subject) submitted its report, which, on motion of Comp. _____, seconded by Comp. _____, was received (or received and adopted).

Payment of Accounts

The accounts of _____ having been presented and read, it was moved by Comp. _____, seconded by Comp. _____, that they be paid (or that they be referred to the Executive Committee and, if found correct, paid).

Petitions

The following applications for Exaltation and preliminary degrees were presented, received, and referred to the Executive Committee to be reported upon at next Convocation :

CONSTITUTION

Bro. (names in full), age _____, avocation _____, residence _____, a Master Mason and member (or demitted member) of _____ Lodge No. _____. Recommended by Comp. _____, seconded by Comp. _____.

And for affiliation: Comp. (names in full), a member, (or demitted member) of _____ Chapter No. _____, at _____, on the register of the Grand Chapter of _____, age _____, avocation _____, residence _____. Recommended by Comp. _____ and Comp. _____.

Ballot

The Executive Committee, having reported favorably on the application of Bro. _____ for Exaltation and preliminary degrees, the Ex. Z. ordered the ballot to be passed, which, on examination, was declared in his favor (or against him).

Board of Trial

Bro. (or Bros.) _____, having been reported in waiting, the Ex. Z. appointed Comp. _____, with the Scribe E., a Board of Trial, to examine the candidate as to his proficiency as a Master Mason, and to collect the statutory fee.

Chapter Called Off

The Board of Trial, having reported to the Ex. Z. that the candidate had passed a satisfactory examination and paid the necessary fee, the Chapter was called off for the purpose of opening in the Mark Master Mason's degree at _____ p.m.

M. M. M.'s Lodge

A lodge of Mark Master Masons was then regularly opened at _____ p.m., with the following officers:

| | |
|------|------------|
| W.M. | S.O. |
| S.W. | J.O. |
| J.W. | S.D. |
| Sec. | J.D. |
| M.O. | I.G. Tyler |

Degree

Bro. _____, having been duly prepared, was then advanced to the honorary degree of a Mark Master Mason.

**M. E. M.
Logde**

The Lodge of Mark Master Masons was then closed in proper form and a Lodge of Most Excellent Masters regularly opened at — p.m., with the following officers :

| | |
|------|-------|
| W.M. | S.D. |
| S.W. | J.D. |
| J.W. | I.G. |
| Sec. | Tyler |

Degree

Bro. ———, being in attendance and reported as having made suitable proficiency in the preceding degree, was properly prepared and admitted, when he was duly received and acknowledged as a Most Excellent Master.

**Chapter
Called On**

The Lodge of Most Excellent Masters was then closed in proper form at — p.m., and the Chapter resumed.

R. A. Degree

Bros. ———, ———, ———, being in attendance and having passed a satisfactory examination, and being properly prepared, were severally exalted to the Supreme Degree of the Holy Royal Arch.

No further business coming before the Chapter, it was closed in prescribed form at — o'clock.

Scribe E.

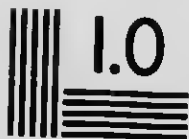
Read and confirmed this _____ day of _____, 19____.

Z.



MICROCOPY RESOLUTION TEST CHART

(ANSI and ISO TEST CHART No. 2)



4.5

2.8

2.5

5.0

3.2

2.2

5.6

6.3

3.6

7.1

8.0

4.0

2.0



APPLIED IMAGE Inc

1653 East Main Street
Rochester, New York 14609 USA
(716) 482 - 0300 - Phone
(716) 288 - 5989 - Fax

Guide to Scribes E.

Minutes are to be read at regular Convocations only ; and after having read the minutes of the previous regular Convocations, those of any subsequent emergency are to be read for information.

For the sake of clearness and distinction, a line at least should be left blank between each minute. A marginal note should be made of the contents of each transaction.

Scribes E. should also keep a rough minute book to enter the proceedings as they occur, and afterwards copy them legibly in the regular minute book, to which he must attach his signature ; and when they have been read and confirmed in open Chapter, the Z. signs them also.

Every Chapter must keep a book, or books, outside the Chapter room for members and visitors to enter their names as they arrive, which it is the duty of the Janitor to see done before he gives notice of their being present.

It is usual on the presentment of reports from committees to move their reception, or their reception and adoption. If open to discussion or amendment, first move their reception and afterwards their adoption.

The Constitution declares twenty-dollars (\$20) the lowest fee that can be charged for Exaltation, which is to be paid previously to the candidate's "advancement." The sum includes the fee for registering the Companion's name in the books of the Grand Chapter, and a Grand Chapter certificate.

The Z. is responsible for the fees collected on behalf of the Grand Chapter, and it is his particular duty to see that the same are regularly and promptly forwarded.

The newly-admitted candidate is required to sign the by-laws at the close of his advancement to the M. M. M. degree, when he is presented with a printed copy of same and a copy of the Constitution of Grand Chapter.

The Constitution requires application for registration and certificate *within one month* of a Companion's Exaltation. He, having paid for same, is entitled to immediate possession. A form of application is provided by the Grand Scribe E.

Names for registration should be given *in full* and written legibly, with *age, occupation and place of residence*.

The financial year of the Chapter ends December 31st. The Annual Return must be sent to the Grand Scribe E., with accompanying dues and fees, *immediately* after the December Convocation, if no emergent Convocation for conferring degrees is held subsequent to it ; and the Return of present officers and past Z's, promptly after installation.

The Annual Return must include all additions and deductions within the Chapter's financial year. In cases of withdrawal, suspension or death, *the date must not be omitted*.

All names *once on the roll must be returned as members*, until returned by the Chapter as dead, resigned, suspended or excluded.

If a Companion is a member of a Chapter *only one day*, during the period for which the Return is made, he must be included in the list of members.

All applications to the Grand Scribe E.'s office for requirements demanding a fee, *must be accompanied by the amount* ; otherwise they cannot be considered.

In remitting moneys, Post Office, Bank or Express Company's orders should, where convenient, be used. Commission on bank cheques will be charged back.

RULES OF GRAND CHAPTER

Respecting Trials for Masonic Offences and Proceedings Thereon

OFFENCES

1. The following are Masonic offences :

Atheism.

Contempt for God and religion.

Any violation of the Constitution, laws, edicts, rules or regulations of Grand Chapter.

Any violation of the By-laws of a Chapter by a member thereof.

Disobedience to those in authority or contemptuous language towards them.

Contemptuous expressions regarding Masonry.

Any intentional violation of the technical parts or points of the several Masonic obligations.

Any violation of the particular injunctions of the ritual or any of the landmarks of Masonry.

Improper revelations.

Countenance of imposters.

Masonic communion with clandestine Masons or irregular Lodges.

Violation of the secrecy of the ballot.

Undue solicitation of candidates.

Wronging a Mason by fraud.

Using a Masonic emblem as a trademark or business sign.

All public crimes and misdemeanors involving moral turpitude.

Drunkenness and profligacy.

Fighting.

Adultery and all lascivious associations, whether with the relative of a Mason or with a stranger.

Cruelty to wife or child.

JURISDICTION

2. For any offence against the by-laws of his Chapter a Companion shall be tried by the Chapter to which he belongs.
3. For any other Masonic offence a Companion shall be tried by the Chapter to which he belongs, or by the Chapter nearest his place of residence, or by a commission to be appointed by the Grand Z.
4. A trial resulting in conviction or acquittal shall be a bar to any other prosecution for the same offence.

SERVICE OF PAPERS

5. Service on any brother of papers in connection with a Masonic trial or any appeal connected therewith, when such service is required by the rules, shall be effected in the following manner :

If the residence of the Companion is known and he resides within the jurisdiction, he shall be served personally.

If his residence be known and he resides out of the jurisdiction, he shall either be served personally or a copy of such paper shall be sent to him by mail prepaid and registered, addressed to him at his proper post-office address.

If his residence is unknown, a copy of such paper shall be sent to him by mail, prepaid and registered, addressed to him at his last known place of residence, or left at such last known place of residence or with a grown-up member of his family.

When a definite number of days' service by posting is required by any of the following rules, the day of posting the paper to be served shall count as one day.

The following rules shall apply to a trial by a Chapter, but shall also govern as far as applicable a trial by a commission :

PROCEDURE

6. A charge of Masonic offence shall be made in writing. It shall be signed by the accuser, who must be an affiliated Companion in good standing. It shall specify with reasonable certainty the particulars of the offence alleged and the time and place of its commission, and it shall be filed by the accuser with the Scribe E. of the Chapter which is to try the case.

7. The charge shall be read at the first regular meeting of the Chapter which shall occur after the lapse of ten clear days from the day on which the same is filed.
8. On a charge being filed with the Scribe E. of the Chapter, he shall, with the summons for the next meeting, send notice to all the members thereof that such charge has been received and of the time when the same shall be read.
9. The proceedings in connection with the trial after charges have been filed shall, subject to the control of the Z. of the Chapter, be conducted under the supervision of the J., whose duty it shall be to see that the rules respecting Masonic trials are adhered to, that the accused brother has ample opportunity to prepare his defence, and that the trial is brought to a close as expeditiously as may be reasonable.
10. When the charge shall be presented and read, the Chapter shall decide by a majority vote whether it shall be accepted, and the accused Companion be placed on trial, or shall be dismissed. If the charge is accepted, it cannot be withdrawn except for good cause shown, and by the vote of two-thirds of the members present. The charge shall not be amended except by a majority vote and on due notice to the accused.
11. Immediately upon the acceptance of a charge by a Chapter, the Z. shall appoint the time and place of trial, and shall cause the accused to be served with a duly attested copy of the charge and the particulars, if any, and a notice stating the time and place appointed for the trial thereof. The time shall be so fixed as to give the accused reasonable time to prepare his defence.
12. Should the accused neglect to attend at the time and place of trial after notice has been served on him, the Chapter may at the time in such notice specified proceed in his absence and conduct the proceedings to a final issue. Provided, that at least one regular meeting shall intervene between the time of serving such notice, and any action by the Chapter in pursuance thereof. In the absence of the accused, the Chapter shall appoint a competent Companion to act for him as his counsel or representative.
13. In every case where a flagrant offence shall be committed by any Companion present while the Chapter is at labor, the foregoing rules requiring notice and delay may be dispensed with, and the Z. may order the offending Companion to show cause instantly why he should not be punished, and may in his discretion proceed, or permit the Chapter to proceed, to trial and suspension.

14. The trial of charges may proceed at any meeting appointed for the purpose. In case it be not completed at one meeting, it may be continued at any subsequent meeting to which the same may be postponed. Notice of any postponement or adjournment shall be given to all parties concerned.

15. Every trial shall be prosecuted with as much despatch as the law governing the same and full justice to the accuser and the accused will permit.

16. Witnesses in Masonic trials who are Masons must be in good standing. They shall give their testimony on their honor as Masons.

17. Witnesses in Masonic trials who are not Masons must be of such religious belief as would justify their evidence being received in a Court of Justice. They shall solemnly pledge themselves to state the truth, the whole truth and nothing but the truth.

18. The rules respecting evidence in Courts of Justice shall apply as far as the same can be made applicable to evidence at Masonic trials.

19. The evidence of both the accuser and the accused, if offered, shall be received at any Masonic trial.

20. The evidence of witnesses who are Masons may be taken in open Chapter, or by a special committee appointed by the Z. Witnesses who are not Masons shall be examined only by a committee appointed for the purpose by the Z. In either case the accuser and the accused in person, or a Companion as counsel or representative, shall be entitled to be present and to examine or cross-examine the witnesses.

21. The testimony of any witnesses unable to attend the Chapter or committee may be taken by deposition before a Royal Arch Mason authorized by the Z. to act in the matter, due notice of the time and place having first been given to all parties concerned.

22. It shall be the duty of the accuser and the accused to secure the attendance of their respective witnesses who are not Masons; and through the Z. and Scribe E. of the Chapter they may, when necessary, summon as a witness any resident Mason, whether he be a member of the Chapter or not.

23. Testimony can only be taken in open Chapter; the decision as to guilt or innocence, and the question of punishment,

shall be severally determined in and by a Chapter of Royal Arch Masons.

24. The Z. shall decide all questions as to the relevancy of the evidence and the regularity of the proceedings; and the Scribe E. or other person appointed for that purpose by the Z. shall take down in writing the evidence submitted by both the accuser and the accused and note all objections made by either. The evidence, objections and rulings shall be filed among the archives of the Chapter, and the main facts of the case shall be entered upon the Chapter records.

25. At the conclusion of the evidence the accuser and the accused in person, or their counsel or representative, may, if they desire, address such relevant remarks to the Chapter upon the merits of the case as may be deemed proper; after which the accuser and the accused shall retire from the Chapter. Any member entitled to vote may express his views on the case and the law and the facts involved; and no member shall be permitted to withdraw from the Chapter until after final action, except for urgent reasons, and with the consent of two-thirds of the members present.

26. A committee for the purpose of taking evidence shall consist of not less than three members of the Chapter, any of whom may for reasonable cause, to be fully explained by the objecting party, be removed by the Z. who shall appoint another in his place.

27. Every such committee shall select from their number a Chairman and Secretary, and when so organized shall have power, through the Z. and Scribe E. of the Chapter, to summon before them the accuser and the accused with their respective witnesses.

28. The proceedings of such committee shall be governed by the foregoing provisions so far as applicable. The duties of the Z. and Scribe E. of the Chapter above prescribed shall apply to and may be discharged by the Chairman and Secretary of the committee.

29. The committee may sit whenever and as often as it may deem best for the interests of Masonry and the full investigation of the complaint before them.

30. When the committee have concluded their labors they shall report their proceedings and all the evidence to the Chapter; and upon the accuser and the accused retiring, any member of

the Chapter present may express his views of the case, and may require any portion or the whole of the evidence to be read to enable him to come to a decision.

31. In case the accused Companion shall plead guilty, such plea shall be accepted as evidence, and shall render the taking of further proof unnecessary ; but such plea shall not excuse the Chapter from voting upon the question of guilt or innocence.

32. No visitor shall attend the Chapter or committee for any purpose other than giving testimony during any of the proceedings of a Masonic trial, unless permission be granted by the Z. or by the Chapter, or by the committee when the proceedings are before a committee.

JUDGMENT

33. At the conclusion of the trial the question of "guilty" or "not guilty" shall be immediately and distinctly put by the Z. upon each charge in its order, which shall be voted upon separately, and every member present must vote by ballot. It shall require a vote of a majority to sustain the charge.

34. If any charge shall be sustained the accused shall then and there be declared "guilty" and the Z. shall put the question as to whether he shall be suspended indefinitely, suspended for a definite time, or reprimanded. Each of these questions shall be put separately, in the above order, if necessary, and shall be decided by a majority of the members present, all of whom must vote by ballot. The Chapter may also, by a like ballot, recommend to Grand Chapter that the offender be expelled.

35. When any Companion shall have been suspended by a Chapter, he shall be notified of his suspension by the Scribe E., who shall also immediately report the same to the Grand Scribe E. When any Companion shall have been acquitted, he shall be notified of his acquittal by the Z. in open Chapter, if present, and by the Scribe E. in writing.

PUNISHMENT

36. The punishment which shall be inflicted by Chapters for a "Masonic offence" shall be in the discretion of the Chapter either "indefinite suspension," "definite suspension," or "reprimand," and must be inflicted by the vote of a majority of the Companions present.

37. The penalty of suspension and the duration thereof may be voted upon together or separately.

38. No "definite suspension" shall be voted for a longer term than three years, nor for a less term than three months.

39. "Reprimand" shall be the least Masonic punishment, and when voted by a majority of the members present, shall be administered in open Chapter by the Z.

40. Suspension for any offence subjects the offender and his family, during its continuance, to an absolute deprivation of all the rights, privileges and benefits of Masonry.

APPEALS

41. The accuser or accused or any member of the Chapter may appeal from any verdict or sentence in the case rendered or adjudged, or from any vote or decision of a Chapter or commission upon the subject of any charge, and such appeal may be made to the Grand Z. or to Grand Chapter. If the appeal is to Grand Chapter, it shall be heard at the first annual Convocation thereof which occurs after the lapse of ten days from the time the notice of appeal is given.

42. The notice of appeal shall be in writing, shall be signed by the appellant and shall contain a statement of the case and the reasons of appeal. It shall be filed with the Grand Scribe E. within the time limited for serving notice of appeal.

43. The appellant shall give the Chapter appealed from, or the chairman of the commission, notice of his intention to appeal within twenty-one days after notice of its action or decision has been served upon him, and the Scribe E. of such Chapter, under the direction of the Z., or the chairman of the commission, shall, at least ten days before the annual meeting of Grand Chapter, produce to the Grand Scribe E., and also give to the appellant, and to any Companion affected by the decision appealed from, if demanded, on payment of the sum of ten cents per folio therefor, a certified copy of all the charges, papers, proceedings and evidence in the case.

44. Should the appeal not be made in time for the next Convocation of Grand Chapter held after the appeal is taken, it shall stand over until the next subsequent annual Convocation of Grand Chapter, or it may be disposed of by the Grand Z. during recess.

45. Upon hearing an appeal the Grand Z. or Grand Chapter may dismiss the appeal or affirm the decision appealed from ; or

Modify or change a decision, or sentence, or inflict penalty where the constituent Chapter has failed to do so ; or

Set aside the proceedings of the Chapter for informality and remand the case for further proceedings ; or

Give such directions as may be reasonable and proper.

46. In all cases of appeal the Grand Z. or Grand Chapter may authorize the Grand Superintendent of the District to investigate the case and report thereon with his opinion.

47. Whenever the Grand Z. or Grand Chapter on a review of a trial or other proceedings of a Chapter, or a commission properly appointed, resulting in the suspension of a Companion, shall reverse or annul the judgment upon said proceedings, or shall order a new trial, the accused shall be thereby restored to all his rights, privileges and membership. When a case is remanded for a new trial, no amendment shall be made to the original charges unless the accused have due and timely notice thereof.

TRIAL BY COMMISSION

48. When a case is tried by commission the proceedings thereof shall be under its control. The charge shall be sent to the chairman of the commission by the Grand Scribe E. with the notice of the appointment thereof and with any special instructions which may be given by the Grand Z.

49. The Grand Z. may at any stage of a case before verdict or judgment is pronounced, withdraw a case from trial by a Chapter and refer the same to a commission for trial. The commission shall, as nearly as practicable, follow the procedure laid down for trial by a Chapter, but shall have power to do all things necessary for the proper discharge of the duties entrusted to it. It shall have the same jurisdiction as the Chapter possesses respecting the summoning of witnesses and the taking of evidence.

50. The commission shall decide upon the questions of guilt or innocence and punishment in the same manner as a Chapter is authorized to decide, and shall report its conclusions to the Grand Scribe E. to be laid before the Grand Z.

51. The accuser and accused shall have the same right of appeal as is given from the verdict or decision of a Chapter, and

the proceedings on such appeal shall be similar to those on appeal from such verdict or decision.

SUSPENSION, EXPULSION, RESTORATION

52. Every Chapter shall communicate to the Grand Scribe E. and to the Grand Superintendent of the district in which the Chapter is situated all suspensions as they may severally occur.

53. A suspended Companion may be restored by Grand Chapter or by the Chapter in appeal which suspended him.

54. A Companion suspended indefinitely seeking restoration shall petition the Chapter by which he was suspended for his restoration. The petition shall be received at a regular meeting of the Chapter, and shall lie over until the next regular Convocation thereafter before final action thereon.

55. The Scribe E. of the Chapter shall notify all the members of the Chapter of such petition at least one week before the meeting at which the question of restoration is to be voted upon.

56. The vote on the restoration shall be by ballot, and it shall require a two-thirds vote of the members present for its adoption. Such vote shall be taken in a Chapter.

57. If a Chapter has ceased to exist, the petition may be made direct to the Grand Chapter.

58. Definite suspension shall expire by limitation, and any member so suspended shall be entitled to resume membership and all rights and privileges thereof at the expiration of the time defined in his sentence, without vote or other action on the part of the Chapter.

59. In all cases of restoration by Grand Chapter the restored Companion resumes the status of a non-affiliated Companion.

60. In all cases of restoration by a Chapter the Companion is restored to all his Masonic rights and privileges, including membership in his Chapter

61. When a Chapter has decided to recommend to Grand Chapter, as provided in Rule 34, that a Brother or Companion be expelled, the recommendation, with papers attached, shall be forwarded forthwith to the Grand Scribe E., who shall serve a 30-day notice upon the convicted Brother or Companion, either personally or by a registered letter, addressed to him at his last known address, requiring him to appear in person or by representative before the Executive Committee on the evening of the

day preceding the next annual Convocation of Grand Chapter, to show cause why he should not be expelled for his offence. The Executive Committee shall report to Grand Chapter, recommending such action in the matter as may seem just or expedient. Should such report confirm the recommendation of the Chapter, and should it be adopted by Grand Chapter, the Brother or Companion shall thereupon be declared expelled. Should such recommendation and papers not reach the Grand Scribe E. in sufficient time to admit of such 30-day notice upon the convicted brother or Companion, the Executive Committee shall report thereon to Grand Chapter and, should such report recommend expulsion and be adopted by Grand Chapter, the Grand Scribe E. shall give a 30-day notice summoning the Brother or Companion to appear before the Executive Committee and Grand Chapter at the following annual Convocation thereof, to then show cause why he should not be expelled and the Executive Committee shall then make such further recommendation to Grand Chapter as may seem just or expedient and should the report again confirm the recommendation of the Chapter and be adopted by Grand Chapter, the Brother or Companion shall be declared expelled for his offence.

62. It shall be the duty of the Grand Scribe E. to see that the summons required by the preceding section is duly served.

63. Should a Companion who has been expelled desire to be restored, he may at any time after his sentence of expulsion file with the Grand Scribe E., at least thirty days before an annual session of Grand Chapter, a petition which shall contain a copy of the charge upon which he was tried and a statement of the grounds upon which he seeks restoration. The petition must be accompanied by a favorable recommendation of the Chapter from which he was suspended, or the Chapter within whose jurisdiction he has continuously resided for the twelve months next preceding the presentation of his petition, passed by a two-thirds vote in and by a Chapter at a regular Convocation.

Z'S. AND CHAPTERS

64. A Z. may be tried by his Chapter after the expiration of his official term for any Masonic offence (except official misconduct or a violation of his obligations). At all such trials the Grand Superintendent of the District shall preside. All complaints for official misconduct shall be made to the proper au-

thority during the official term of the offender, or within four weeks after the close of such term, otherwise he shall not be tried therefor.

65. When a controversy shall arise between Chapters, or between a Chapter and its Z., resulting in charges being preferred, or an informal complaint made, the same shall be filed with the Grand Scribe E., who shall forward the same to the Grand Z. ; if the matter be deemed by him of a sufficiently grave character to warrant investigation, he may appoint a commission of not more than seven nor less than three Z.'s, or Past Z.'s, with the Grand Superintendent of the District as chairman, unless there is a good reason why he should not act, to investigate such charges of complaint ; such commission shall have authority to summon witnesses and shall have such other powers as may be specially delegated to them by the Grand Z., and shall make such report and give such opinion to the Grand Z. as will enable him to make a final decision.

66. When the Z. or other officer of a Chapter shall be deposed from office only, he shall not thereby be deprived of any of the rights or privileges of membership.

NON-PAYMENT OF DUES

67. Any member of a Chapter, who is in arrears for dues to such Chapter, shall be proceeded against in accordance with the provision of the by-laws of such Chapter in respect to the same, and the Book of Constitution.

68. In case no provision has been made in the by-laws of a Chapter for notice to and procedure against a member for non-payment of dues, the following procedure shall be adopted.

69. In case the dues of a Companion remain unpaid for twelve months, it shall be the duty of the Scribe E. of the Chapter to read out the name of such member in default at a regular Convocation thereof, after which a special summons to appear at the next regular Convocation of the Chapter, to show cause why he should not be suspended, together with a statement of the amount of dues remaining unpaid, shall be sent to such member. Such summons shall be deemed duly served, if mailed to the last known address of such member at least seven clear days before the next Convocation.

70. In case such Companion shall not, before such next regular Convocation of the Chapter, have paid the amount of such dues, and no such excuse be offered as the Chapter may deem sufficient, the Z. shall forthwith declare such Companion suspended for non-payment of dues, and the Scribe E. shall notify the Companion and the Grand Superintendent of the district of such suspension.

71. If any excuse be offered, the Chapter shall decide by a majority whether the same is sufficient or not.

72. Any Companion suspended for non-payment of dues seeking re-instatement shall, on payment of dues, be restored to membership in accordance with the Constitution of Grand Chapter without presenting a petition ; provided, that if a Chapter from which a Companion shall have been suspended for non-payment of dues has ceased to exist, a petition for re-instatement may be made to Grand Chapter.

RULES RESPECTING GRANTS FOR BENEVOLENCE

1. Grand Chapter grants to a Companion or to relatives of a deceased Companion, are to be considered as supplementary aid to that given by the Chapter or local board of relief recommending the application ; and it shall be imperative to have given such aid during the twelve months last preceding the date of such application, to record the same in the minute book and to state the same in the application. Provided that where a Chapter in its return shows that it has, during the said period, given local aid, though such local aid was not given to the applicant or applicants, the same shall nevertheless be considered as aid given in compliance with this rule.

2. It shall be competent for one or more Chapters to form themselves into a local board of relief, and for such board to frame a code of by-laws and elect a Chairman and a Secretary-Treasurer ; and when the formation of such board and its by-laws have been approved by the Executive Committee, the same shall be considered duly constituted Local Board of Relief under Grand Chapter.

3. All applications for relief must be made upon a printed form, which will be furnished by the Grand Scribe E. when applied for. They shall be sent to, and be in the possession of, the Grand Scribe E. on or before the 31st day of December immediately

preceding the Annual Convocation of Grand Chapter, in each and every year. It is imperative that the fullest possible information be given in the several blanks in such printed form, whether the application is made for the first time or for the renewal of a grant.

4. All applications for relief shall be made through a Chapter; and shall be signed by the Z. and Scribe E. thereof, with the seal of the Chapter affixed, and in no case shall an application be made through an individual Companion. And it shall be imperative for every Chapter intending to recommend an application for relief, to pass a resolution to that effect in open Chapter, record the same in its minute book, and attach to each application for relief a copy thereof, signed by the Z. or presiding officer, and the Scribe E. of the Chapter, and having the seal of the Chapter attached thereto. All applications for relief recommended by Chapter situated in any city or town in which there is a local board of relief, acknowledged as such by the Grand Chapter, shall be transmitted to Grand Chapter through the local board of relief.

5. In cases of pressing need arising between meetings of Grand Chapter, interim grants for purposes of temporary relief may be made by the Chairman of the Committee on Benevolence, with the approval of the Most Excellent the Grand Z. and the President of the Executive Committee.

6. Grants shall be payable in two equal half-yearly payments by cheques issued by the Grand Scribe E., and signed by him and the Grand Treasurer, and countersigned by the President of the Executive Committee, in favor of the grantee and the Z. of the Chapter, or of the Secretary-Treasurer of the local board of relief, and such cheques shall require the endorsement of both the grantee and the Z., or Secretary-Treasurer (as the case may be) before being honored. In all cases, in which grants are made payable through the Z. of a Chapter, it shall be his duty to report to the Chapter the receipt of such cheque or cheques, and the Scribe E. shall record the report in the minute book of the Chapter. Whenever there is a local board of relief, acknowledged as such by Grand Chapter, in any city or town, all grants made to parties recommended by any Chapter within the limit of such city or town, shall be made payable through the Secretary-Treasurer of the local board of relief. In special cases this rule may be varied by the chairman of the committee, with the consent of the President of the Executive Committee.

7. All Chapters through whose Z., and all local boards of relief, through whose Secretary-Treasurer cheques have been made payable, shall, on or before the thirty-first day of December immediately preceding the Annual Convocation of Grand Chapter forward to the Grand Scribe E. a return upon a printed form, which form shall be furnished by the Grand Scribe E. In such return there shall be shown, in detail, the whole amount of the grant or grants received during the current fiscal year, as also the whole amount, in detail, of the grant or grants paid over to the grantee or grantees during that period ; together with such other information as may be required by the form of return. The return shall be signed by the Z. and Scribe E. of such Chapter and have its seal affixed thereto, or by the Chairman and Secretary-Treasurer of the local board of relief.

8. No Cheque for any subsequent grant shall be issued until the return for preceding grants shall have been received and found to be correct by the Committee on Benevolence or Executive Committee.

9. If any Chapter or local board or relief neglect to make the return within one year from the date when such subsequent grant was made, the grant shall be considered forfeited.

10. All forms of application and returns are from time to time to be prepared by the Executive Committee. The Committee shall also from time to time decide upon the maximum amount of grants to be made in the various classes of cases.

11. No grant may be made to an unaffiliated Companion, nor to relatives of a deceased Companion who at the time of his death was unaffiliated, except in cases when it is shown that the Companion was not at fault, or indifferent to his duty.

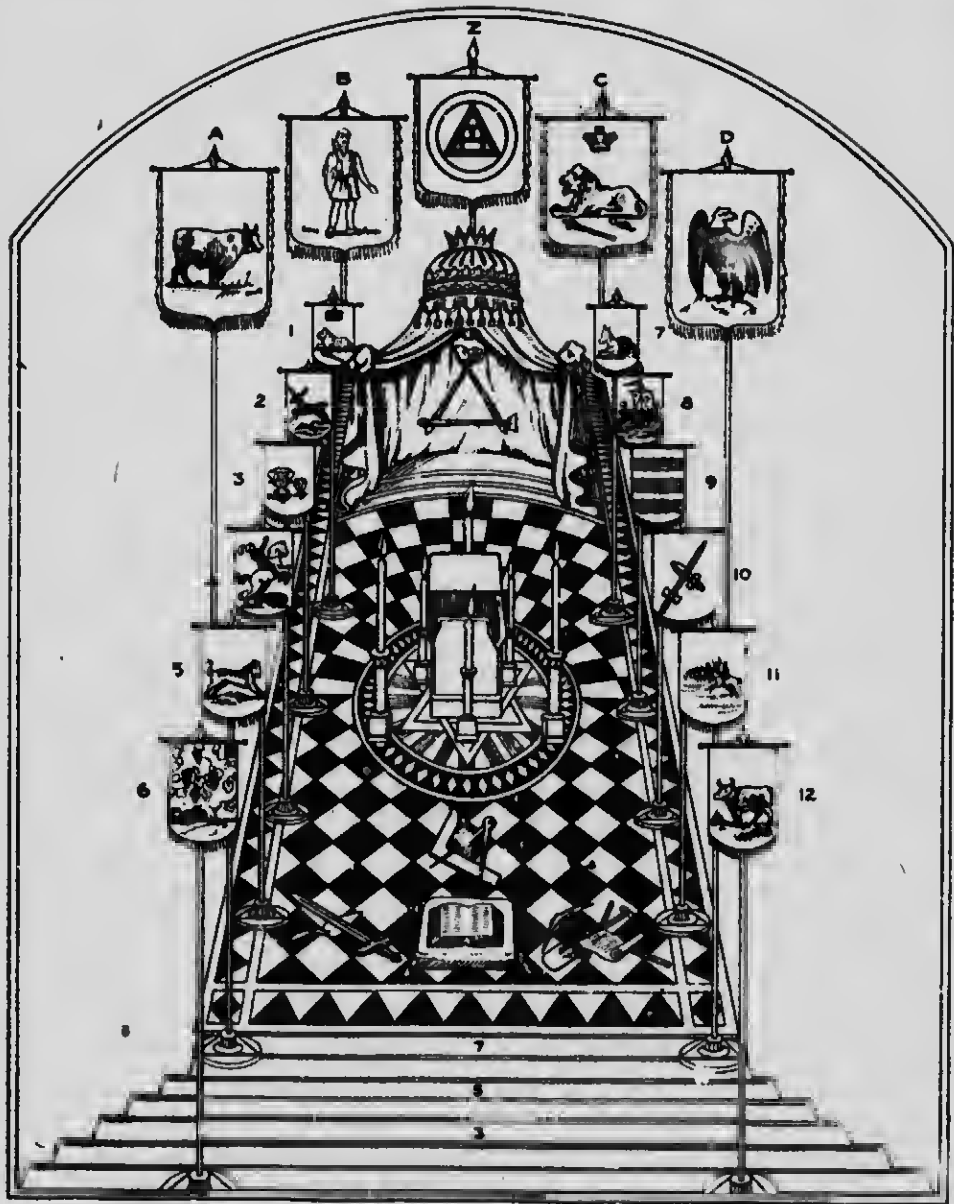
12. It shall be the duty of each Grand Superintendent, on the occasion of his official visit to the Chapters in his District, to ascertain whether any cases of distress exist which should be recommended to Grand Chapter for relief, and if so, to direct the attention of the officers of the Chapter to these rules. It shall also be the duty of each Grand Superintendent to direct the attention of the Chapters in his district through whose Z's, cheques have previously been payable, to the necessity of making proper return for such grants ; and in all cases, of which he is advised, where such Chapters at any time have failed to make such return, he shall make due inquiry into the cause thereof, shall

direct the return to be forwarded to the Grand Scribe E., and to report upon such enquiry to Grand Chapter.

13. Chapters or local boards of relief which fail to comply with the foregoing rules have no claim for the consideration of applications for relief.

14. The Chairman of the Committee on Benevolence shall prepare and lay before the Executive Committee, at its first meeting, held immediately before each Annual Convocation of Grand Chapter and for the purpose of being printed for the information of Grand Chapter, a report in such a form as may from time to time be devised by the Executive Committee, respecting the returns made by local boards of relief and by Chapters, and the applications for relief recommended by the same.

o
y
f
-
d
n
o
e
e



PLAN OF CENTRE FLOOR OF CHAPTER HALL

Chapter Banners

The banners of Royal Arch Masonry consist of one Royal Arch Banner, four Standards, and twelve small banners.

The object of the plate on opposite page is to show the proper arrangement of a Chapter Hall for the Royal Arch degree.

Arrangement of the banners, giving colors and devices, is as follows :

Z.—Royal Arch Banner—white—triple tau and triangle within circle.

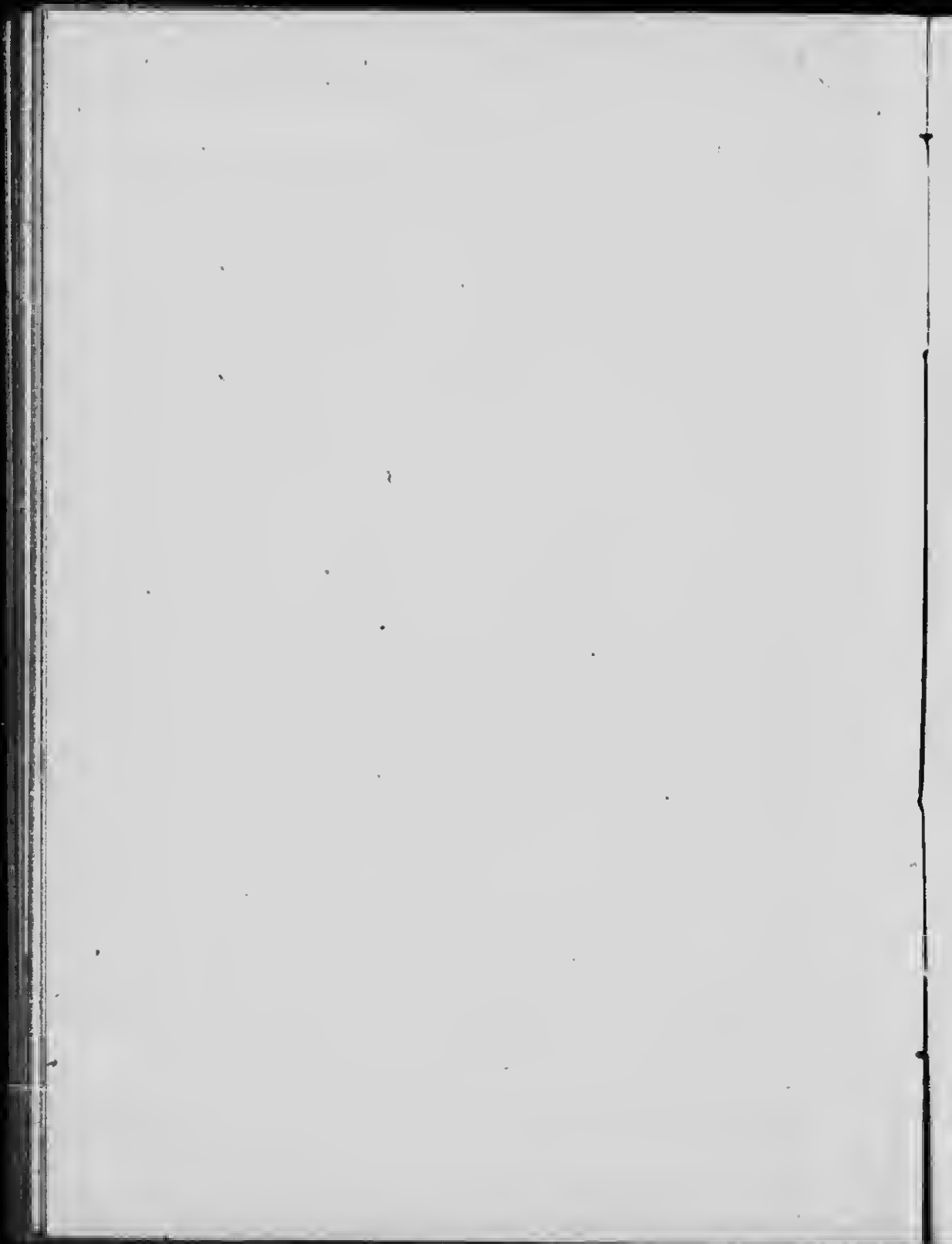
A. B. C. D.—Standards of the Four Divisions of the Army of Israel. A—green—an ox. B—scarlet—a man. C—crimson—lion, crown and sceptre. D—green—an eagle.

1 to 12.—Banners of the Twelve Tribes are :

1. Judah — crimson — lion couchant, with crown and sceptre.
2. Naphtali—blue—a hind let loose.
3. Asher—purple—overflowing cup.
4. Dan—green—a serpent biting a horse's heel.
5. Benjamin—green—a wolf.
6. Manasseh—pale pink—a vine beside a wall.
7. Issacher—sky blue—an ass crouching between two burdens.
8. Zebulon—purple—a ship.
9. Reuben—scarlet—wavy lines.
10. Simeon — yellow — a sword and dagger crossed.
11. Gad—white—a troop of horsemen.
12. Ephraim—green—an ox.

The tribal banners 1 to 12 should be equi-distant and placed on edge of the Mosaic and, where possible, a Companion in white robe seated beside each. The Mosaic, in length and width, should be proportionate to dimensions of Chapter Room so as to afford sufficient space between banners and side benches for all necessary movements between the entrance and the dais.

Note carefully position of presentation implements and general display within banners.



INDEX

| | <i>Sec.</i> | <i>Page.</i> |
|-------------------------------------------------------------------------------------------------------------|-------------|--------------|
| GRAND CHAPTER | | |
| AMENDMENTS TO CONSTITUTION | 285-7 | 74 |
| APPEALS TO GRAND CHAPTER | 30 | 9 |
| Appeal shall lie to the Grand Chapter from the decision of the Grand First Principal..... | 31 | 9-10 |
| Rules respecting Masonic Trials and Appeals.. | | 86-96 |
| APPOINTED AND ELECTED OFFICERS | 11 | 3-5 |
| How appointed..... | 39 | 11 |
| How elected..... | 40 | 11 |
| Who appointed..... | 62 | 16 |
| Candidates eligible,—how nominated..... | 42 | 12 |
| Nominations for, must be in writing..... | 43 | 12 |
| Nominated Companions for elective offices must be present, or else have given consent in writing..... | 43 | 12 |
| Candidates cannot be nominated for more than one office..... | 44 | 12 |
| AUDITOR— | | |
| By whom appointed, his duties..... | 136 (10) | 37 |
| His remuneration..... | 136 (10) | 37 |
| BALLOTING— | | |
| Ballot papers, how printed..... | 45 | 12 |
| Scrutineers, how appointed..... | 46 | 12 |
| Chairman, how appointed and his duties..... | 47 | 12 |
| Time Scrutineers shall meet..... | 47 | 12 |
| Shall have ballot box..... | 47 | 12 |
| How to ballot..... | 48 | 13-4 |
| Only one ballot paper to be deposited..... | 49 | 14 |
| When closed..... | 50 | 14 |
| If not majority vote another ballot necessary.. | 53 | 14-5 |
| The five Candidates for Executive Committee obtaining greatest number of votes elected.. | 51 | 14 |
| Ballot papers cast deposited with Grand Scribe E..... | 54 | 15 |
| Ballot papers, when destroyed..... | 54 | 15 |

| | <i>Sec.</i> | <i>Page</i> |
|-----------------------------------------------------------------------------|-------------|-------------|
| BENEVOLENCE RULES, respecting Grants..... | | 97 |
| COMMITTEES, by whom appointed..... | 99 | 22 |
| COMMITTEE ON CREDENTIALS— | | |
| When appointed..... | 35 | 10-11 |
| When to report..... | 38 | 11 |
| Shall cause Companions to register..... | 36 | 11 |
| Shall deliver to Companions ballot papers..... | 37 | 11 |
| Registration books shall close at two o'clock..... | 38 | 11 |
| CONVOCATIONS— | | |
| Annual, when held..... | 20 | 6 |
| Place of meeting decided by ballot..... | 41 | 12 |
| Emergent, how summoned..... | 21 | 6 |
| Quorum necessary, what constitutes it..... | 22 | 7 |
| Who shall preside..... | 23 | 7 |
| No one below rank of P.G.Z. shall assume G.Z.'s Chair..... | 24 | 7 |
| Order of business..... | 25 | 7-8 |
| Installation and investiture of Officers..... | 26 | 9 |
| Order of business to be called by G.S.E..... | 27 | 9 |
| Grand Z. to determine all matters up for dis- cussion..... | 28 | 9 |
| Mode of voting..... | 28 | 9 |
| Appeals from decisions of G.Z..... | 29 | 9 |
| Appeals from rulings, how brought before Grand Chapter..... | 30 | 9 |
| Chapter or Companion affected by ruling, etc., have right of appeal..... | 31 | 9-10 |
| Can entertain appeal..... | 32 | 10 |
| Grand Chapter only can withdraw warrant of a Chapter..... | 33 | 10 |
| Warrant of Chapter cannot be withdrawn until Officers summoned..... | 34 | 10 |
| DISTRICTS, by name and number..... | 11 | 3-4 |
| EXECUTIVE COMMITTEE— | | |
| How elected and appointed..... | 40 | 11 |
| Shall vote for five..... | 48 | 13-4 |
| Consists of..... | 64 | 16 |
| When to meet..... | 68 | 17 |
| Companions nominated receiving greatest number of votes are elected..... | 51 | 14 |
| Chairman of..... | 65 | 17 |

INDEX

iii

| EXECUTIVE COMMITTEE—Cont. | <i>Sec.</i> | <i>Page</i> |
|----------------------------------------------------------------------------------------------------|-------------|-------------|
| Time of meeting..... | 136 (2) | 36 |
| Number of members constituting a quorum..... | 66 | 17 |
| Authority to determine complaints, etc..... | 136 (4) | 36 |
| Power to summon Officers of a Chapter or any Companion to appear before it..... | 136 (5) | 36 |
| Proceedings in cases of complaints to be kept in a book..... | 136 (6) | 37 |
| If a complaint affects a member of Committee or Chapter to which he belongs he shall withdraw..... | 136 (7) | 37 |
| Shall submit estimate of expenses..... | 136 (8) | 37 |
| Power to inspect books and papers..... | 136 (9) | 37 |
| Appoints Auditor..... | 136 (10) | 37 |
| May summon any Officer or Companion having possession of any books of Grand Chapter..... | 136 (11) | 37 |
| Has direction of furniture and regalia of Grand Chapter..... | 136 (12) | 37 |
| Shall make preparations for meetings of Grand Chapter..... | 136 (13) | 37 |
| Has general care and investment of all funds of Grand Chapter..... | 136 (14) | 37 |
| Petitions to, must be in writing..... | 136 (15) | 37 |
| Communications from, must be in writing..... | 136 (16) | 38 |
| Shall proceed to consider any special matter referred to it by Grand Z..... | 136 (17) | 38 |
| May appoint sub-Committees for specific purposes..... | 136 (18) | 38 |
| All transactions shall be entered in Minute Book of Grand Scribe E..... | 136 (19) | 38 |
| Shall report all its proceedings at Annual Convocation of Grand Chapter..... | 136 (20) | 38 |
| FEEs AND DUES payable to Grand Chapter..... | 138 | 39 |
| Amount of annual dues fixed by Grand Chapter..... | 138 | 39 |
| Minimum exaltation fee..... | 139 | 39 |
| Registration and certificate..... | 140 | 39-40 |
| End of financial year..... | 141 | 40 |
| No dues from a Chapter which has suffered by fire, unless insured..... | 143 | 40 |
| GRAND CHAPTER— | | |
| Name of..... | | 1 |
| Jurisdiction of..... | | 1 |

| GRAND CHAPTER—Cont. | Sec. | Page |
|---------------------------------------------------------------------------------|-------------|-------------|
| Powers and authority..... | 3 | 1-2 |
| Its power of investigating..... | 4 | 2 |
| Its grants under seal Dispensations and Warrants..... | 5 | 2 |
| Can expel or restore to membership..... | 6 | 2 |
| Decides questions of law, usages, etc..... | 7 | 2 |
| Has power of discipline and can restore on appeal from Chapter or Lodge..... | 8 | 2-3 |
| Authorized work..... | 9 | 3 |
| No Dispensation or Warrant granted independent of Chapter..... | 10 | 3 |
| Of whom composed..... | 11 | 3 |
| Members of..... | 14 | 5 |
| Companions entitled to Past rank must serve full term of twelve months..... | 15 | 5 |
| A Past Z. who affiliates with Chapter ranks according to seniority..... | 16 | 5 |
| Privileges of Masonic rank restricted to this Jurisdiction..... | 17 | 6 |
| Titles of Officers..... | 18 | 6 |
| Shall be an Historian..... | 19 | 6 |
| If proposer absent, may permit Companion to present motion..... | 92 | 21 |
| Discretionary power vested in presiding officer..... | 93 | 21 |
| GRAND Z..... | 94 | 21 |
| Powers and Prerogatives..... | 95-8 | 21-2 |
| Has sole power to appoint Representatives.... | 99 | 22 |
| To decide all questions of usage..... | 100 | 22 |
| To convene any Chapter of Royal Arch Masons | 101 | 23 |
| To suspend Warrant or Z. of a Chapter..... | 102 | 23 |
| To call upon any Officer for advice or assistance | 103 | 23 |
| To summon any Chapter or Officer to attend him and produce books, etc..... | 114 (1) | 26 |
| May give orders for production of books, etc., before Committee on enquiry..... | 105 | 23 |
| How communicated with..... | 115 | 26 |
| May direct charge against Chapter..... | 107 | 24 |
| May entertain appeal from decision of Grand Superintendent..... | 109 | 24 |
| Ceremonies, to perform..... | 111 | 24-5 |
| Dispensations, and authority to issue..... | 112-3 | 25 |
| In event of absence..... | 117 | 26 |

INDEX

| | <i>Sec.</i> | <i>Page</i> |
|---------------------------------------------------------------------------------------|-------------|-------------|
| GRAND Z—Cont. | | |
| Statement of powers not to be construed as limiting..... | 118 | 26 |
| Travelling expenses..... | 119 | 27 |
| GRAND H., duties of..... | 120 | 27 |
| President of Executive Committee..... | 120 | 27 |
| Report Official acts..... | 120 | 27 |
| GRAND J., duties of..... | 121 | 27 |
| Vice-President of Executive Committee..... | 121 | 27 |
| Report Official acts..... | 121 | 27 |
| GRAND SUPERINTENDENTS OF DISTRICTS, must be | | |
| Past Z.'s..... | 123 | 27 |
| Elected at Annual Convocation subject to confirmation of Grand Z..... | 60 | 16 |
| Qualifications for the Office..... | 61 | 16 |
| Powers and duties..... | 123 | 27-30 |
| May summon any Chapter or Companion to attend him..... | 123 (5) | 28 |
| Warrants for new Chapters must be recommended and signed by him..... | 123 (7) | 28 |
| Report his official acts and the condition of Royal Arch Masonry in his district..... | 123 (11) | 29 |
| Power to refuse consent to remove a Chapter from place to place..... | 123 (12) | 29-30 |
| Power to grant Dispensations for Chapters of Instruction only..... | 123 (13) | 30 |
| GRAND TREASURER, his duties..... | 124 | 30 |
| His books open for inspection by Grand Council..... | 124 | 30 |
| His accounts to be audited..... | 124 | 30 |
| GRAND SCRIBE E., his duties..... | 125 | 30-4 |
| Receives money payable to Grand Chapter.... | 125 (16) | 32 |
| Keeps accounts in form prescribed by Executive Committee..... | 125 (22) | 32-3 |
| Cheques to bear his signature..... | 125 (23) | 33 |
| Date of closing accounts..... | 125 (25) | 33 |
| Books audited by Professional Accountant.... | 125 (26) | 33 |
| Must prepare full Statement of Accounts.... | 125 (27) | 33 |
| Mode of payments prescribed by Grand Council..... | 125 (28) | 33 |
| His salary..... | 125 (29) | 34 |

| | <i>Sec.</i> | <i>Page</i> |
|-------------------------------------------------|-------------|-------------|
| GRAND SCRIBE N., his duties..... | 126 | 34 |
| GRAND PRINCIPAL SOJOURNER, his duties..... | 127 | 34 |
| GRAND REGISTRAR, his duties..... | 128 | 34 |
| GRAND LECTURER, his duties..... | 129 | 34-5 |
| Authorized work communicated to, by Grand | | |
| Z..... | 129. | 34 |
| Shall be paid for services not less than \$5.00 | | |
| per day and actual travelling and hotel ex- | | |
| penses..... | 130 | 35 |
| Visits to Chapters, how arranged..... | 129 | 34 |
| In no case shall expenses be entailed upon | | |
| Grand Chapter..... | 131 | 35 |
| GRAND SENIOR SOJOURNER, his duties..... | 132 | 35 |
| GRAND JUNIOR SOJOURNER, his duties..... | 133 | 35 |
| GRAND REPRESENTATIVES, by whom appointed.. | 99 | 22 |
| GRAND JANITOR, his duties..... | 134 | 35 |
| How elected..... | 55 | 15 |
| His salary..... | 134 | 35 |
| HISTORIAN, his duties..... | 135 | 35 |
| HONORARY RANK, cannot be conferred above | | |
| P.G.J..... | 88-9 | 20 |
| INSTALLATION OF OFFICERS, in Grand Chapter... | 57 | 15 |
| In event of absence..... | 58 | 16 |
| Proxy installation not allowed..... | 58 | 16 |
| OFFICERS OF GRAND CHAPTER— | | |
| In order of precedence..... | 11 | 3 |
| When installed..... | 26 | 9 |
| Must be subscribing Honorary or Life members | | |
| of some subordinate Chapter..... | 59 | 16 |
| If, remove from Jurisdiction or cease to be a | | |
| member of a subordinate Chapter, vacates | | |
| office..... | 81 | 19 |
| Past Grand, who for six months cease to be a | | |
| member of a Constituent Chapter is dis- | | |
| qualified from attending Grand Chapter... | 82 | 19 |
| No Grand Officer who has been duly elected | | |
| can be removed or suspended except for cause | 83-4 | 19 |
| Can resign before or after installation when | | |
| vacancy is filled..... | 85 | 20 |

INDEX

vii

| | <i>Sec.</i> | <i>Page</i> |
|-----------------------------------------------------------------------|-------------|-------------|
| OFFICERS OF GRAND CHAPTER—Cont. | | |
| Past Z.'s eligible for any Office in Grand Chapter..... | 56 | 15 |
| Titles of Present and Past..... | 18 | 6 |
| Obligation of fealty..... | 91 | 21 |
| Duties of other than appertaining to respective offices..... | 137 | 39 |
| RETURNS, annual (when due in hands of Grand Scribe E.)..... | 141 | 40 |
| ROYAL ARCH CLOTHING— | | |
| Must be worn in Grand Chapter..... | 90 | 21 |
| Description of Apron for Past and Present Grand Chapter Officers..... | 274 | 69 |
| Description of Jewel for past and present Grand Z.'s..... | 276-7 | 70 |
| Jewel of the Order, how worn..... | 279 | 70 |
| Jewel of Mark Master..... | 280 | 71 |
| Jewel of Officer of Grand Chapter..... | 282 | 71 |
| RULES OF ORDER FOR government during business..... | 288 | 74-7 |
| SUSPENSIONS U.M.C.— | | |
| In any Grand Lodge, suspends in Grand Chapter | 86 | 20 |
| VOTING IN GRAND CHAPTER— | | |
| Meaning of proxy vote..... | 75-6 | 18 |
| Those who are entitled to vote..... | 69 | 17 |
| Visiting Companions cannot vote..... | 74 | 18 |
| Limits of proxies to individuals..... | 37 | 11 |
| Senior P.Z. and Chapter vote..... | 80 | 19 |
| Chapter may submit alternate name..... | 78 | 18-9 |
| Failure to send in returns affects vote..... | 87 | 20 |
| May demand a ballot..... | 72 | 18 |
| Majority vote decides..... | 70 | 17 |
| How to vote..... | 71 | 18 |
| When names of proxies sent to Grand Scribe E. | 79 | 19 |
| CONSTITUENT CHAPTERS | | |
| AUDITORS— | | |
| How elected..... | 173 | 46 |
| When to Audit and present report..... | 220 | 57 |
| BALLOTING, must take place in R.A. Degree..... | | |
| For Candidates..... | 231 | 59 |
| Chapter members only can vote..... | 255 | 66 |
| | 256 | 66 |

| | <i>Sec.</i> | <i>Page</i> |
|-----------------------------------------------------------|-------------|-------------|
| BALLOTING—Cont. | | |
| One ballot only for several Degrees..... | 257 | 66 |
| Secrecy of ballot inviolable..... | 206 | 52 |
| How to be disclosed..... | 207 | 52 |
| When application may be withdrawn..... | 258 | 66 |
| Ballot cannot be postponed when ordered..... | 258 | 66 |
| Two adverse Ballots, at most, exclude..... | 259 | 66 |
| Books necessary in each Chapter..... | 209 | 53 |
| Minutes as per form prescribed..... | 209 | 53 |
| The Book of Marks..... | 271 | 68 |
| Members' and Visitors' Register..... | 268 | 68 |
| The Scribe E.'s Book..... | 269 | 68 |
| The Treasurer's Cash Book..... | 270 | 68 |
| Book for By-Laws..... | 272 | 69 |
| By-Laws, when to be drafted..... | 162 | 44 |
| How submitted for approval..... | 162 | 44 |
| Amendments to By-Laws..... | 163 | 44-5 |
| Day and hour to be specified..... | 164 | 45 |
| Signatures to By-Laws..... | 165 | 45 |
| Chapter upon receiving Warrant must adopt By-Laws..... | 166 | 45 |
| Temporary By-Laws..... | 167 | 45 |
| CANDIDATES for Chapter Degrees..... | 224 | 58 |
| Qualifications of..... | 224-5 | 58-9 |
| How proposed..... | 225 | 58-9 |
| Jurisdiction limit must be respected..... | 233 | 60 |
| Status on unfavorable report..... | 229 | 59 |
| Objection after admission..... | 260 | 66 |
| CERTIFICATES, none but those authorized..... | 253 | 65 |
| Scribe E. to make application..... | 253 | 65 |
| Prompt application necessary..... | 239 | 62 |
| CHAPTERS, Government of— | | |
| Authority, legality of Assembly..... | 144 | 41 |
| Warrant or Dispensation necessary..... | 145 | 41 |
| An "Affiliated Companion" shall mean..... | 146 | 41 |
| A Companion attaining Rank of P.Z. to retain Rank..... | 147 | 41 |
| A "Joining Companion" shall mean..... | 148 | 41 |
| Officers of R.A. Chapter..... | 149 | 41 |
| Shall be constituted..... | 152 | 42 |
| Every Chapter to have Warrant or Dispen- sation..... | 153 | 42 |

INDEX

ix

| <i>CHAPTERS—Cont.</i> | <i>Sec.</i> | <i>Page</i> |
|----------------------------------------------------------------------------------------------|-------------|-------------|
| Every Chapter to procure distinctive Seal . . . | 154 | 42 |
| Necessary quorum at opening | 182 | 48 |
| Opening and closing imperative | 187 | 48 |
| Election and Installation, how held | 173 | 46 |
| Of Emergency | 172 | 46 |
| Standing Committees | 178 | 47 |
| In event of absence of Z. | 182 | 48 |
| Instructions to Grand Chapter Representative | 199 | 51 |
| Property should be insured | 143 | 40 |
| Property to revert to Grand Chapter in case of extinction | 190-3 | 49-50 |
| Under Dispensation shall apply for Warrant | 157 | 43 |
| Shall be consecrated | 158 | 44 |
| Precedence of Chapter, derived from number | 190 | 49 |
| Failing to convene one year or make returns | 191 | 49 |
| Must make returns and payments annually to Grand Scribe E. | 192 | 49-50 |
| No power to adjourn from day to day | 204 | 52 |
| May require from Treasurer and Secretary, security for funds | 214 | 55 |
| CHAPTER BANNERS | | 102 |
| CHAPTER HALL PLAN | | 101 |
| CHAPTER JURISDICTION— | | |
| Halfway to nearest Chapter | 234 | 60 |
| Where concurrent | 234 | 60 |
| CHAPTER OFFICERS | 173 | 46 |
| By whom installed | 152 | 42 |
| How elected | 173 | 46 |
| When installed | 173 | 46 |
| The Z.H. and J. eligibility, etc. | 189 | 48 |
| Examination prior to advancement | 189 | 48-9 |
| Duties and responsibilities | 222 | 58 |
| How resignation is permitted | 179 | 47 |
| Z., H. and J. installed, other Officers not | 150 | 42 |
| Principals of Chapter shall be Masters and Wardens of M.M.M. and M.E.M. Degrees | 151 | 42 |
| It is not legal to instal Officers of Chapter under Dispensation | 159 | 44 |
| May provide how some shall be elected | 174 | 46 |
| Two or more Chapters may instal and invest Officers in same room | 175 | 46-7 |

| <i>CHAPTER OFFICERS—Cont.</i> | <i>Sec.</i> | <i>Page</i> |
|--------------------------------------------------------------------------------------|-------------|-------------|
| Cannot be installed publicly..... | 176 | 47 |
| Z. shall appoint all Officers not elected..... | 178 | 47 |
| An Officer can resign his Office with consent of Chapter..... | 179 | 47 |
| If Officer appointed and vacancy occurs can be filled by Z..... | 180 | 47 |
| A Companion to be entitled to Past Rank must serve a full term of twelve months..... | 181 | 47 |
| Z. | | |
| How elected and installed..... | 173 | 46 |
| His duties..... | 215 | 55-6 |
| In case of absence..... | 182 | 48 |
| No Companion below rank of Z. shall assume Chair..... | 183 | 48 |
| H. | | |
| How elected and installed..... | 173 | 46 |
| His duties..... | 216 | 56 |
| J. | | |
| How elected and installed..... | 173 | 46 |
| His duties..... | 217 | 56 |
| Has care of Regalia and Jewels..... | 217 | 56 |
| <i>Treasurer.</i> | | |
| How elected and installed..... | 172 | 46 |
| His duties..... | 218 | 57 |
| <i>Scribe E.</i> | | |
| How elected and installed..... | 173 | 46 |
| His duties..... | 219 | 57 |
| <i>Janitor.</i> | | |
| How elected..... | 173 | 46 |
| His duties..... | 221 | 58 |
| CHAPTER, U.D., work limited to that specified.. | 186 | 48 |
| CHAPTER WARRANT, form of application..... | 155 | 78 |
| How applied for..... | 155 | 42-3 |
| Information it contains..... | 155 (5) | 43 |
| Naming after living person prohibited..... | 170 | 46 |
| Cannot be transferred..... | 168 | 45 |
| When surrendered held in custody of Grand Scribe E..... | 169 | 46 |
| Precedence established by number..... | 199 | 49 |
| Nine Members necessary to hold..... | 190 | 49 |
| How forfeited..... | 191 | 49 |

INDEX

xi

| | <i>Sec.</i> | <i>Page</i> |
|--------------------------------------------------------|-------------|-------------|
| CHAPTER WARRANT—Cont. | | |
| If forfeited, how restored..... | 193 | 50 |
| Can only be restored by Grand Chapter..... | 193 | 50 |
| Property of Grand Chapter..... | 193 | 50 |
| CONSTITUTION, amendments, how proposed..... | | |
| Heretofore adopted by the Grand Chapter in- | 285 | 74 |
| consistent with this Constitution are hereby | | |
| repealed..... | 287 | 74 |
| CONVOCACTIONS, at least every three months..... | | |
| Day and hour must be specified..... | 171 | 46 |
| Failure to convene and make returns..... | 164 | 45 |
| Emergent, conditions and how called..... | 191 | 49 |
| Business must be stated..... | 172 | 46 |
| Number to legalize opening..... | 172 | 46 |
| DEATHS, should be reported promptly..... | | |
| | 254 | 65 |
| DEGREES, how conferred..... | | |
| | 224 | 58 |
| DEMIT, how applied for..... | | |
| Certificate of withdrawal..... | 248 | 64 |
| Terms to rejoin..... | 248 | 64 |
| | 249 | 64 |
| DISCIPLINE, power of the Chapter..... | | |
| Method of procedure..... | 194 | 50 |
| In event of appeal from decision..... | 196-7 | 50-1 |
| Procedure in cases of expulsion..... | 195 | 50 |
| | 198 | 51 |
| DISPENSATION— | | |
| Necessary for R. A. Clothing in Public..... | 264 | 67 |
| Penalty for violation..... | 265 | 67 |
| DUES, may be remitted, if notice given..... | | |
| Neglect in payment..... | 252 | 65 |
| Remission of Dues restores..... | 250 | 64-5 |
| | 252 | 65 |
| DUTIES to Grand Chapter. | | |
| Chapter shall Annually make returns of Officers, | | |
| members, etc., to G.S.E..... | 236 | 61 |
| Names of Candidates to be sent to G.S.E..... | 236 | 61 |
| Fees for registration and certificates to be sent | | |
| G.S.E..... | 240 | 62 |
| EXECUTIVE COMMITTEE— | | |
| How and when appointed..... | 178 | 47 |
| H. to preside..... | 216 | 56 |
| Examining Board, appointed..... | 173 | 46 |

| | <i>Sec.</i> | <i>Page</i> |
|-------------------------------------------------------------------------------------------------------------|-------------|-------------|
| FORMS | | 78-81 |
| For Warrant..... | | 78 |
| For Exaltation..... | | 79 |
| For Affiliation..... | | 79 |
| Of Withdrawal..... | | 80 |
| Of Proxy..... | | 80 |
| Of Entry Transactions in Minute Book..... | | 81-3 |
| GUIDE TO SCRIBES E | | 84 |
| JURISDICTION of Chapters, how defined..... | 234 | 60 |
| LODGE, M.M.M. and M.E.M. , when convened... 187 | | 48 |
| M.M.M. and M.E.M. opened and worked without Chapter being first opened..... | 171 | 46 |
| All business except degrees to be done in Chapter..... | 188 | 48 |
| MARK , selection of, compulsory before Exaltation | 230 | 59 |
| Must be confined to authorized form..... | 271 | 68-9 |
| Crests, etc., not permissible..... | 271 | 69 |
| MEMBERSHIP , qualifications for admission..... | 224 | 58 |
| Qualifications for Affiliation..... | 232 | 60 |
| Registration and Grand Chapter Certificate... 239 | | 62 |
| Residence and Jurisdiction..... | 233 | 60 |
| Must furnish evidence of good standing..... | 225 | 58-9 |
| Must be regularly proposed..... | 226 | 59 |
| If report favorable must be balloted for..... | 228 | 59 |
| If report unfavorable cannot be proposed or balloted for within twelve months..... | 229 | 59 |
| Must select Mark before being Exalted..... | 230 | 59 |
| Cannot admit Candidate residing within Juris- diction of another Chapter without written consent..... | 233 | 60 |
| How Companion having R.A. Degree and not preliminary degrees can receive them..... | 235 | 61 |
| MEMBERSHIP, HONORARY , permitted..... | 247 | 64 |
| Conditions governing same..... | 247 | 64 |
| Must be included in Annual Return..... | 247 | 64 |
| MEMBERSHIP, LIFE , permitted..... | 244 | 63 |
| Dues should be commuted..... | 244 | 63 |
| Withdrawing from a Chapter and joining another..... | 245 | 63 |
| Entitled to Chapter privileges..... | 246 | 63 |

INDEX

xiii

| | <i>Sec.</i> | <i>Page</i> |
|------------------------------------------------------------------------------------------------------|-------------|-------------|
| MINUTES, Form of Entry to be observed..... | | 81-3 |
| NOTES for Guidance of Scribes E..... | | 84 |
| NON-PAYMENT OF DUES..... | | |
| If Dues unpaid for twelve months..... | 69 | 96 |
| Restored to Membership on payment of dues..... | 72 | 97 |
| PRELIMINARY DEGREES— | | |
| May be conferred on Visiting Companions..... | 235 | 61 |
| PUBLIC PROCESSIONS— | | |
| Royal Arch Regalia not allowed to be worn..... | 264 | 67 |
| RESOLUTIONS, notices to amend or rescind..... | 200 | 51 |
| ROYAL ARCH CLOTHING, authorized regalia..... | 273 | 69 |
| While assembled in Chapters, must be worn..... | 184 | 48 |
| Prohibited at Masonic funerals..... | 265 | 67 |
| Penalty for violation..... | 265 | 67 |
| Description of Apron for Principals and Past Z.'s..... | 274 | 69 |
| Description of Apron for Present and Past Officers of Grand Chapter..... | 275 | 69-70 |
| Jewel of Office of Principals and Officers, how worn..... | 276 | 70 |
| Regalia of Officers of Mark Master and Most Excellent Masters may be those of the Chapter..... | 278 | 70 |
| Jewel of the Order, how worn..... | 279 | 70 |
| Description of the Jewel of a Mark Master..... | 280 | 71 |
| No Jewel not authorized by Grand Chapter to be worn..... | 281 | 71 |
| Jewels of Officers..... | 282-3 | 71-3 |
| Robes of Officers..... | 284 | 73 |
| RULES respecting Grants for Bencvolence..... | | 97 |
| RULES respecting Trials and Appeals..... | | 86-96 |
| SEAL, how affixed..... | 211 | 54 |
| SUMMONS for Convocation must be served seven days..... | 185 | 48 |
| SUSPENSION N. P. D.— | | |
| Delinquent to be notified..... | 250 | 64-5 |
| Penalty for negligence..... | 250 | 64-5 |
| Restoration follows payment..... | 251 | 65 |

| | <i>Sec.</i> | <i>Page</i> |
|-----------------------------------------------------------------------------------|-------------|-------------|
| SUSPENSION, U. M. C. | 208 | 52 |
| In any Lodge, suspends in Grand Chapter.... | 86 | 20 |
| If a Companion misbehaves..... | 205 | 52 |
| If suspended deprived of all rights and privi- leges..... | 208 (3) | 52 |
| If Chapter suspended all members are under Masonic disability..... | 208 (4) | 53 |
| TRIALS for Masonic Offences— | | |
| Appeal taken to Grand Chapter..... | 195 | 50 |
| Offences..... | | 86 |
| Jurisdiction..... | | 87 |
| Service of papers..... | | 87 |
| Procedure..... | | 87-8 |
| Judgment..... | | 91 |
| Punishment..... | | 91-2 |
| Appeals..... | | 92 |
| Trial by Commission..... | | 93 |
| Suspension, Expulsion, Restoration..... | | 94 |
| A Z. may be tried after expiration of official term..... | | 95 |
| Power of Constituent Chapter..... | 194 | 50 |
| Copy of Proceedings to be sent..... | 195 | 50 |
| In cases of expulsion..... | 196-8 | 50-1 |
| VISITATION, limited in case of unaffiliates..... | 242 | 63 |
| Vouching and examination..... | 241 | 62 |
| Visitor subject to By-Laws..... | 241 | 62-3 |
| VOTING, except in cases where ballot required, by show of hands..... | 203 | 51 |
| WORK, only authorized allowed..... | 202 | 51 |

ec. *Page*
3 52
3 20
5 52

(3) 52

(4) 53

50
88
87
87
87-8
91
91-2
92
93
94

95
50
50
8 50-1
63
62
62-3

51
51

