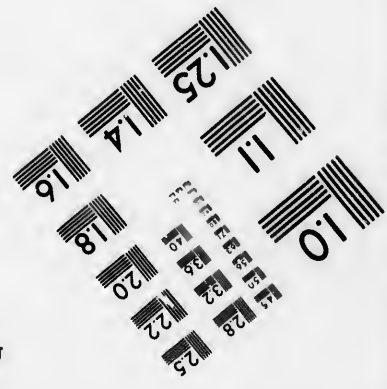
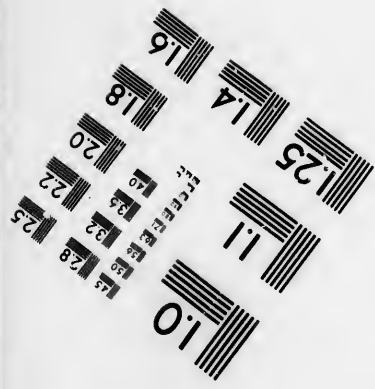
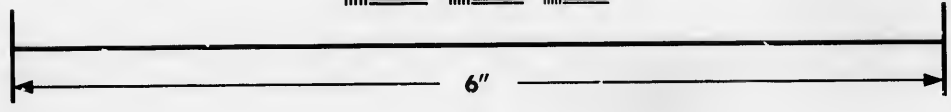
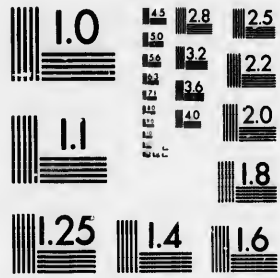


**IMAGE EVALUATION
TEST TARGET (MT-3)**



**Photographic
Sciences
Corporation**

23 WEST MAIN STREET
WEBSTER, N.Y. 14580
(716) 872-4503

**CIHM/ICMH
Microfiche
Series.**

**CIHM/ICMH
Collection de
microfiches.**



Canadian Institute for Historical Microreproductions / Institut canadien de microreproductions historiques

© 1986

Technical and Bibliographic Notes/Notes techniques et bibliographiques

The Institute has attempted to obtain the best original copy available for filming. Features of this copy which may be bibliographically unique, which may alter any of the images in the reproduction, or which may significantly change the usual method of filming, are checked below.

L'Institut a microfilmé le meilleur exemplaire qu'il lui a été possible de se procurer. Les détails de cet exemplaire qui sont peut-être uniques du point de vue bibliographique, qui peuvent modifier une image reproduite, ou qui peuvent exiger une modification dans la méthode normale de filmage sont indiqués ci-dessous.

- Coloured covers/
Couverture de couleur
- Covers damaged/
Couverture endommagée
- Covers restored and/or laminated/
Couverture restaurée et/ou pelliculée
- Cover title missing/
Le titre de couverture manque
- Coloured maps/
Cartes géographiques en couleur
- Coloured ink (i.e. other than blue or black)/
Encre de couleur (i.e. autre que bleue ou noire)
- Coloured plates and/or illustrations/
Planches et/ou illustrations en couleur
- Bound with other material/
Relié avec d'autres documents
- Tight binding may cause shadows or distortion along interior margin/
Le reliure serrée peut causer de l'ombre ou de la distorsion le long de la marge intérieure
- Blank leaves added during restoration may appear within the text. Whenever possible, these have been omitted from filming/
Il se peut que certaines pages blanches ajoutées lors d'une restauration apparaissent dans le texte, mais, lorsque cela était possible, ces pages n'ont pas été filmées.
- Additional comments: [Printed ephemera] 1 sheet (verso blank)
Commentaires supplémentaires:

- Coloured pages/
Pages de couleur
- Pages damaged/
Pages endommagées
- Pages restored and/or laminated/
Pages restaurées et/ou pelliculées
- Pages discoloured, stained or foxed/
Pages décolorées, tachetées ou piquées
- Pages detached/
Pages détachées
- Showthrough/
Transparence
- Quality of print varies/
Qualité inégale de l'impression
- Includes supplementary material/
Comprend du matériel supplémentaire
- Only edition available/
Seule édition disponible
- Pages wholly or partially obscured by errata slips, tissues, etc., have been refilmed to ensure the best possible image/
Les pages totalement ou partiellement obscurcies par un feuillet d'errata, une pelure, etc., ont été filmées à nouveau de façon à obtenir la meilleure image possible.

This item is filmed at the reduction ratio checked below/
Ce document est filmé au taux de réduction indiqué ci-dessous.

10X	14X	18X	22X	26X	30X
<input type="checkbox"/>	<input type="checkbox"/>	<input type="checkbox"/>	<input checked="" type="checkbox"/>	<input type="checkbox"/>	<input type="checkbox"/>
12X	16X	20X	24X	28X	32X

The co
to the

The Im
possibl
of the
filming

Origina
beginn
the las
sion, c
other c
first pa
sion, a
or illus

The las
shell c
TINUE
which

Maps,
differe
entirel
beginn
right a
require
metho

The copy filmed here has been reproduced thanks to the generosity of:

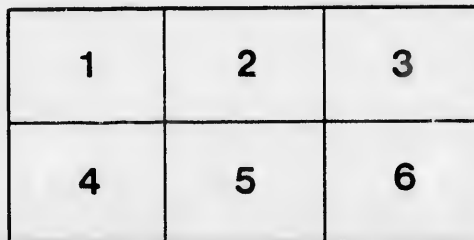
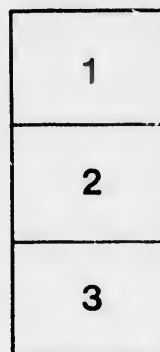
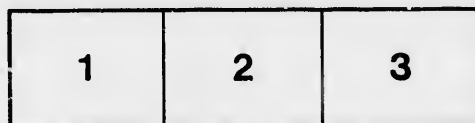
Seminary of Quebec
Library

The images appearing here are the best quality possible considering the condition and legibility of the original copy and in keeping with the filming contract specifications.

Original copies in printed paper covers are filmed beginning with the front cover and ending on the last page with a printed or illustrated impression, or the back cover when appropriate. All other original copies are filmed beginning on the first page with a printed or illustrated impression, and ending on the last page with a printed or illustrated impression.

The last recorded frame on each microfiche shall contain the symbol \rightarrow (meaning "CONTINUED"), or the symbol ∇ (meaning "END"), whichever applies.

Maps, plates, charts, etc., may be filmed at different reduction ratios. Those too large to be entirely included in one exposure are filmed beginning in the upper left hand corner, left to right and top to bottom, as many frames as required. The following diagrams illustrate the method:



L'exemplaire filmé fut reproduit grâce à la générosité de:

Séminaire de Québec
Bibliothèque

Les images suivantes ont été reproduites avec le plus grand soin, compte tenu de la condition et de la netteté de l'exemplaire filmé, et en conformité avec les conditions du contrat de filmage.

Les exemplaires originaux dont la couverture en papier est imprimée sont filmés en commençant par le premier plat et en terminant soit par la dernière page qui comporte une empreinte d'impression ou d'illustration, soit par le second plat, selon le cas. Tous les autres exemplaires originaux sont filmés en commençant par la première page qui comporte une empreinte d'impression ou d'illustration et en terminant par la dernière page qui comporte une telle empreinte.

Un des symboles suivants apparaîtra sur la dernière image de chaque microfiche, selon le cas: le symbole \rightarrow signifie "A SUIVRE", le symbole ∇ signifie "FIN".

Les cartes, planches, tableaux, etc., peuvent être filmés à des taux de réduction différents. Lorsque le document est trop grand pour être reproduit en un seul cliché, il est filmé à partir de l'angle supérieur gauche, de gauche à droite, et de haut en bas, en prenant le nombre d'images nécessaire. Les diagrammes suivants illustrent la méthode.

MONTHLY METEOROLOGICAL REGISTER, ST. MARTIN, ISLE JESUS, CANADA EAST—MARCH, 1861.
(NINE MILES WEST OF MONTREAL.)

BY CHARLES SMALLWOOD, M. D., I.L.D.

Latitude—45 deg. 32 min. North. Longitude—73 deg. 36 min. West. Height above the Level of the Sea—118 feet.

Day.	Barom. corrected and reduced to 32°			Temp. of the Air.—F.			Tension of Vapor.			Humidity of Air.			Direction of Wind.			Horizontal Movement in Miles in 24 hours.	Mean of Ozone. (tenths)	Rain in Inches	Snow in Inches	WEATHER, &c.		
	6 A.M.	2 P.M.	10 P.M.	6 A.M.	2 P.M.	10 P.M.	6 A.M.	2 P.M.	10 P.M.	6 A.M.	2 P.M.	10 P.M.	6 A.M.	2 P.M.	10 P.M.					A cloudy sky is represented by 10; A cloudless sky by 0.		
	6 A.M.	2 P.M.	10 P.M.	6 A.M.	2 P.M.	10 P.M.	6 A.M.	2 P.M.	10 P.M.	6 A.M.	2 P.M.	10 P.M.	6 A.M.	2 P.M.	10 P.M.					6 A.M.	2 P.M.	10 P.M.
1	29.801	29.904	29.905	34.4	48.4	35.0	1.09	200	102	84	78	80	NBE	SW	SW	133.20	3.5	Cu. Str. 9.	C. C. Str. 6.	C. Str. 9. Au. B.
2	802	804	732	31.4	43.4	36.1	1.40	193	170	84	71	80	SBW	SBW	NBE	10.60	4.5	In'p.	...	Do. 10.	C. Str. 10.	Cu. Str. 10.
3	474	247	415	34.5	41.4	39.0	1.82	228	201	94	87	88	NBE	W	WSW	46.30	5.5	0.747	...	Rain.	Do. 10.	Clear.
4	30.454	30.371	543	37.4	34.6	29.0	1.42	169	129	84	84	82	WSW	WSW	W	270.70	3.0	Clear.	Cu. Str. 2.	Scud. 4.
5	29.816	29.716	824	9.0	30.4	15.2	0.51	136	070	77	83	82	W	W	WSW	274.00	3.0	Do.	Cu. Str. 10.	Do. 4.
6	074	450	716	16.7	21.6	12.8	0.68	074	081	75	04	71	SW	W	W	299.10	4.5	...	0.99	Snow.	Snow.	Slight Snow.
7	30.190	30.188	30.398	-11.4	3.0	0.0	0.20	032	030	70	00	64	WBN	WSW	WSW	370.90	2.5	Clear.	Clear.	Clear.
8	327	120	29.810	-1.0	26.6	29.8	0.30	117	136	69	82	83	SEB	SSE	SSE	180.90	3.5	Do.	C. C. Str. 8.	Cu. Str. 4.
9	29.650	29.431	320	34.2	35.6	33.1	1.82	169	168	95	83	89	SSE	W	W	120.70	7.5	0.264	0.77	Rain.	Rain.	C. C. Str. 10.
10	550	727	30.076	29.4	29.1	19.1	1.36	142	077	84	86	76	WSW	WSW	WSW	272.10	6.0	...	1.40	C. C. Str. 8.	Cu. Ct. Str. 3.	Clear.
11	30.117	30.100	040	-1.1	30.9	17.7	0.28	140	072	63	85	75	W	W	SSE	69.20	3.0	Clear.	Clear.	C. C. Str. 10.
12	29.664	060	147	21.4	27.0	10.4	0.65	117	050	73	92	80	SSE	W	SEB	319.80	4.5	...	1.04	Str.	4.	Do.
13	839	000	107	10.6	22.6	18.4	0.54	095	077	78	79	76	SSE	WBS	WFW	232.90	7.5	...	3.07	Snow.	Snow.	C. Str. 8. Au. B.
14	30.273	214	120	-4.0	21.9	5.5	0.24	074	032	51	64	60	NWB	NBE	NBE	14.60	3.0	Clear.	Clear.	Do. 2. do.
15	137	29.953	000	-1.0	32.5	16.1	0.40	137	070	85	74	80	NBE	SBW	SSW	17.10	2.5	Do.	Do.	Str. 2. do.
16	29.753	401	29.450	-1.0	36.7	29.9	0.31	170	130	70	80	78	NW	SBW	SSE	27.80	2.0	In'p.	...	Do.	Cirr.	0.
17	820	30.040	30.220	-5.0	7.3	-2.9	0.22	037	032	68	62	82	W	W	NNW	343.50	2.0	Do.	Clear.	Slight Rain.
18	30.497	420	506	-16.4	12.9	-4.2	0.12	045	024	69	00	65	W	SW	SSW	56.90	2.0	Do.	Do.	Do.
19	543	330	198	-17.1	15.9	1.6	0.03	059	026	12	66	56	NBE	NBE	NBE	103.60	2.0	Do.	Do.	Do.
20	277	247	138	-3.7	31.9	7.0	0.31	136	037	83	78	64	NBE	NBE	NBE	10.90	1.0	Do.	Do.	Cirr. 4. L. hal.
21	29.995	29.900	27.914	-6.0	20.0	23.0	0.40	075	101	75	71	76	NBE	NBE	NBE	27.60	4.0	...	1.10	C. Str. 10.	Snow.	C. C. Str. 6.
22	30.028	30.011	30.000	18.6	47.1	27.9	0.77	273	129	70	85	88	NBE	SWBW	WSW	35.20	3.0	Cu. Str. 6.	Clear.	Clear.
23	29.948	29.741	29.542	15.2	48.4	39.0	0.61	260	201	74	78	86	ESE	EBN	S	70.80	2.5	Clear.	Cir. Cum. 4.	Cu. Str. 10.
24	460	576	864	31.0	32.3	26.4	0.58	156	117	85	85	88	S	WSW	NW	372.00	2.0	C. C. Str. 4.	Cu. Str. 10.	Clear.
25	30.176	30.040	920	14.4	36.9	32.1	1.61	156	162	74	75	87	WSW	SEB	ESE	111.20	2.0	Clear.	C. C. Str. 4.	C. C. Str. 10.
26	29.890	29.746	748	29.4	34.6	33.7	1.49	162	162	89	83	84	NBE	NBE	NBE	152.80	6.5	0.510	...	Cu. Str. 10.	Rain.	Rain.
27	524	476	518	33.4	36.1	37.8	1.68	208	193	89	91	86	NBE	NBE	SSW	209.50	4.0	0.235	...	Do.	10.	Fog.
28	781	950	30.060	20.0	34.2	29.0	0.61	155	129	77	79	82	W	W	WSW	618.79	3.0	Do.	4.	Clear.
29	30.214	814	29.770	21.1	39.0	33.1	0.61	158	168	77	68	89	NBE	NBE	NBE	335.20	5.0	Cirr.	4.	Cu. Cirr. 4.
30	29.198	697	30.134	40.5	38.7	29.3	2.19	180	136	87	77	83	WSW	W	NW	187.50	3.5	Rain.	4.	C. C. Str. 6.
31	428	441	599	15.0	32.4	20.4	0.61	137	081	78	74	77	NBE	ESE	SBW	72.20	2.0	Clear.	Do.	6.

REMARKS ON THE ST. MARTIN, ISLE JESUS, METEOROLOGICAL REGISTER FOR MARCH.

Barometer Highest, the 31st day 30.599
 Lowest, the 30th day 29.198
 Monthly Mean 29.878
 Monthly Range 1.401
 Thermometer Highest, the 1st day 48° 4
 Lowest, the 19th day -17° 1
 Monthly Mean 21° 94
 Monthly Range 65° 5
 Greatest Intensity of the Sun's Rays 76° 6
 Lowest Point of Terrestrial Radiation -19° 7
 Mean of Humidity768
 Rain fell on 6 days, amounting to 1.756 of an inch; it was raining 52 hours 35 minutes.
 Snow fell on 6 days, amounting to 8.34 inches; it was snowing 40 hours and 15 minutes.
 Mos. prevalent wind, the N. E. by E.
 Least prevalent wind, the E. by N.
 Most windy day, the 28th; mean miles per hour, 25.77.
 Least windy day, the 2nd; mean miles per hour, 0.61.
 Aurora Borealis visible on 6 nights.
 Lunar Halo visible on 1 night.
 Imperfect Solar Halo the 31st day.
 Zodiacal Light was bright.
 The Electrical state of the Atmosphere has indicated moderate intensity.

