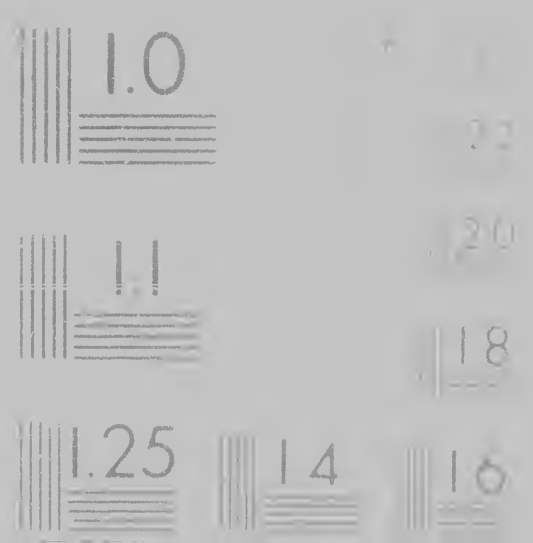


**IMAGE EVALUATION
TEST TARGET (MT-3)**

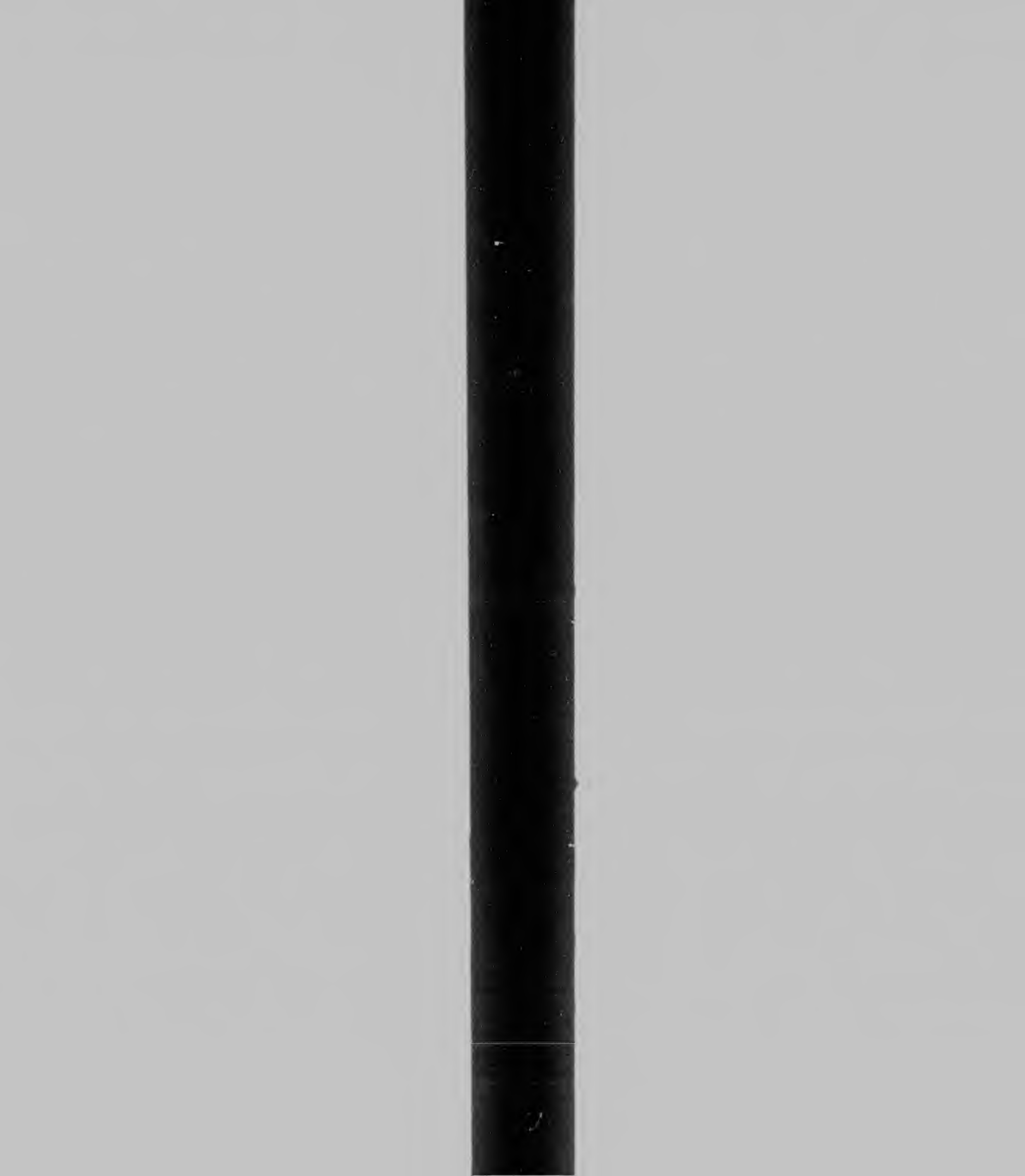




**CIHM/ICMH
Microfiche
Series.**

/ICMH
fiche

CIHM/ICMH
Collection de
microfiches.



Technical and Bibliographic Notes / Notes techniques et bibliographiques

The Institute has attempted to obtain the best original copy available for filming. Features of this copy which may be bibliographically unique which may alter any of the images in the reproduction or which may significantly change the usual method of filming are checked below

L'Institut a microfilmé le meilleur exemplaire qu'il lui a été possible d'obtenir. Les particularités de cet exemplaire, de point de vue bibliographique, qui peuvent modifier une image reproduite ou qui peuvent entraîner une modification dans la méthode habituelle de reproduction sont indiquées ci-dessous.

- | | | | |
|--|---|--|--|
| <input type="checkbox"/> Coloured covers | <input type="checkbox"/> Couverture de couleur | <input type="checkbox"/> Coloured pages | <input type="checkbox"/> Pages de couleur |
| <input type="checkbox"/> Covers damaged | <input type="checkbox"/> Couverture endommagée | <input type="checkbox"/> Pages damaged | <input type="checkbox"/> Pages endommagées |
| <input type="checkbox"/> Covers restored and/or laminated | <input type="checkbox"/> Couverture restaurée et/ou pelliculée | <input type="checkbox"/> Pages restored | <input type="checkbox"/> Pages restaurées |
| <input type="checkbox"/> Cover title missing | <input type="checkbox"/> Le titre de couverture manque | <input type="checkbox"/> Pages discoloured | <input type="checkbox"/> Pages décolorées |
| <input type="checkbox"/> Coloured maps | <input type="checkbox"/> Cartes géographiques en couleur | <input type="checkbox"/> Pages detached | <input type="checkbox"/> Pages détachées |
| <input type="checkbox"/> Coloured ink (i.e. neither blue or black) | <input type="checkbox"/> Encre de couleur (i.e. autre que bleue ou noire) | <input type="checkbox"/> Showthrough | <input type="checkbox"/> Transparence |
| <input type="checkbox"/> Coloured plates and/or illustrations | <input type="checkbox"/> Planches et/ou illustrations en couleur | <input type="checkbox"/> Quality of print | <input type="checkbox"/> Qualité négative |
| <input type="checkbox"/> Bound with other material | <input type="checkbox"/> Relié avec d'autres documents | <input type="checkbox"/> Includes supplementary material | <input type="checkbox"/> Comprend des documents supplémentaires |
| <input type="checkbox"/> Tight binding may cause shadows or distortion | <input type="checkbox"/> Le reliage serré peut causer des ombres ou des distorsions | <input type="checkbox"/> Only one side of the leaf is filmed | <input type="checkbox"/> Une seule face de la feuille est filmée |

Uniques et bibliographiques

Institut a microfilme le meilleur exemplaire
il lui a ete possible de se procurer. Les details
cet exemplaire qui sont peut etre uniques du
point de vue bibliographique, qui peuvent modifier
l'image reproduite, ou qui peuvent exiger une
modification dans la methode normale de filmage
sont indiques ci-dessous

Coloured pages/
Pages de couleur

Pages damaged/
Pages endommagees

Pages restored and/or laminated/
Pages restaurees et/ou pelliculees

Pages discoloured, stained or foxed/
Pages decolorées, tachetées ou plouées

Pages detached/
Pages detachees

Showthrough/
Transparence

Quality of print varies/
Qualite (egale de) l'impression

Includes supplementary material/
Comprend du materiel supplementaire

Only edition available

The copy filmed here has
to the generosity of

Library of
Photodup

The images appearing here
possible considering the
of the original copy and in
filming contract specific

Original copies in printed
beginning with the front
the last page with a printed
sion, or the back cover v
other original copies are
first page with a printed
sion, and ending on the l
or illustrated impression

Maps, plates, charts, etc
different reduction ratios
entirely included in one
beginning in the upper le
right and top to bottom,
required. The following c

filmed here has been reproduced thanks to the generosity of

Library of Congress
Photoduplication Service

Images appearing here are the best quality possible, considering the condition and legibility of the original copy and in keeping with the contract specifications.

Books in printed paper covers are filmed with the front cover and ending on the back cover when appropriate. All original copies are filmed beginning on the first page with a printed or illustrated impression, ending on the last page with a printed or illustrated impression.

Tables, charts, etc. may be filmed at various reduction ratios. Those too large to be included in one exposure are filmed in the upper left hand corner, left to right and top to bottom, as many frames as necessary. The following diagrams illustrate the

L'exemplaire filmé fut reproduit grâce à la générosité de :

Library of Congress
Photoduplication Service

Les images suivantes ont été reproduites avec le plus grand soin, compte tenu de la condition et de la netteté de l'exemplaire filmé, et en conformité avec les conditions du contrat de filmage.

Les exemplaires originaux dont la couverture en papier est imprimée sont filmés en commençant par le premier plat et en terminant soit par la dernière page qui comporte une empreinte d'impression ou d'illustration, soit par le second plat, selon le cas. Tous les autres exemplaires originaux sont filmés en commençant par la première page qui comporte une empreinte d'impression ou d'illustration et en terminant par la dernière page qui comporte une telle empreinte.

Les cartes, planches, tableaux, etc. peuvent être filmés à des taux de réduction différents. Lorsque le document est trop grand pour être reproduit en un seul cliché, il est filmé à partir de l'angle supérieur gauche, de gauche à droite et de haut en bas, en prenant le nombre

grâce à la

ess
n Service

produites avec le
e la condition et
mé, et en
du contrat de

la couverture en
s en commençant
ant soit par la
e empreinte
soit par le second
es exemplaires
ençant par la
ne empreinte
t en terminant par
une telle

etc., pouvant être
différents
grand pour être
st filmé à partir
e gauche à droite
e nombre



THE RATTLE OF PLATTSBURG.—
 Together with the Siege of Plattsburgh
 Character of a Black Sailor.—

T WAS autumn, around me the leaves were descending,
 And lonely the wood pecker peck'd on the tree :
 Whilst thousands their freedom & rights were defending,
 The din of their arms sounded dismal to me,
 For Sandy, my love, was engag'd in the action,
 His death would have ended my life in distraction ;
 Without him I valued this world not a fraction,
 As lonely I stray'd on the Banks of Champlain.
 Then turning to list to the cannon's loud thunder,
 My elbow I lean'd on a rock near the shore :
 The sound nearly parted my heart strings asunder,
 I thought I should see my dear shepherd no more,
 But soon an express all my sorrows suspended,
 My thanks, to the Father of Mercies, ascended ;
 My shepherd was safe and my country defended,
 By freedom's brave sons, on the banks of Champlain.
 Wip'd from my eyes the big tears that had start'd,
 And listened to parents the news for to bear :
 Who sad for the loss of relations departed,
 And wept at the tidings that banish'd all care,
 The cannon ceas'd roaring, the drums still were beating,
 The foes of our country for the North were retreating,
 The neighboring dang'ls each other were greeting,
 With songs of delight, on the Banks of Champlain.
 They sing of the heroes whose valor had made us
 A nation on earth independent and free :

BAC
 On
 Plat-
 Tow
 Rod
 Wid
 On
 u eig
 Gubb
 Come
 Mass
 D
 Care
 Bang
 In Pl
 Gub
 W

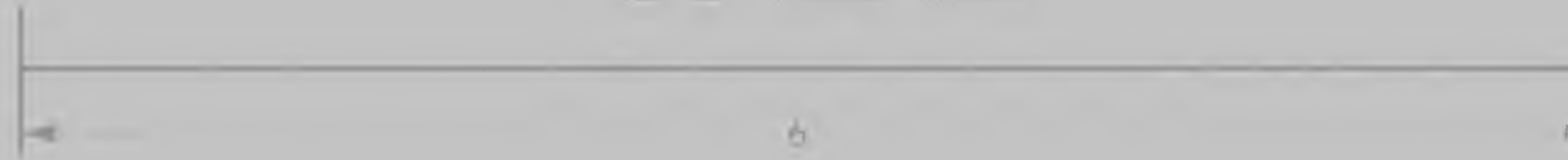


FRG—Tune... Banks of the DEE.
 of Plattsburg, sung in the
 for.—Tune.—"Bayn-Water."



ending, ♪ **BACK** side Albany stan' Lake Champlain,
 ♪ One little pond, half full a' water,
 ending, ♪ Plat-te-bug dare too, clo-e pon de main,
 ♪ Town small, he grow bigger de hereafter.
 ♪ On Lake Champlain
 ♪ Uncle Sam set he boat,
 ♪ And Massa M Donough he sail 'em,
 ♪ While Gen'ral M'Comb
 ♪ Make Plat-te-bug he home,
 ♪ Wid de army, who courage neiber fail 'em.
 ♪ On 'tebenth day of Sep tem ber,
 ♪ In eighteen hund'ed an fourteen,
 ♪ Gubbener Probore, an he British sger
 ♪ Come to Plat-te-bug a-tea party ceatin',
 ♪ An he boat come too
 ♪ Arter uncle Sam boat;
 ♪ Massa Donough do look sharp out de window,
 ♪ D a Gen'ral Mc Comb
 ♪ (An ! he always at home.)
 ♪ Catch fire too, jis like a tinder
 ♪ Bang ! bang ! bang ! den de cannon gun
 ♪ In Plat-te-bug an all he at dat spot
 ♪ Gubbener Probore, he land 'pon de shore
 ♪ An he do he a look 'em in de eye



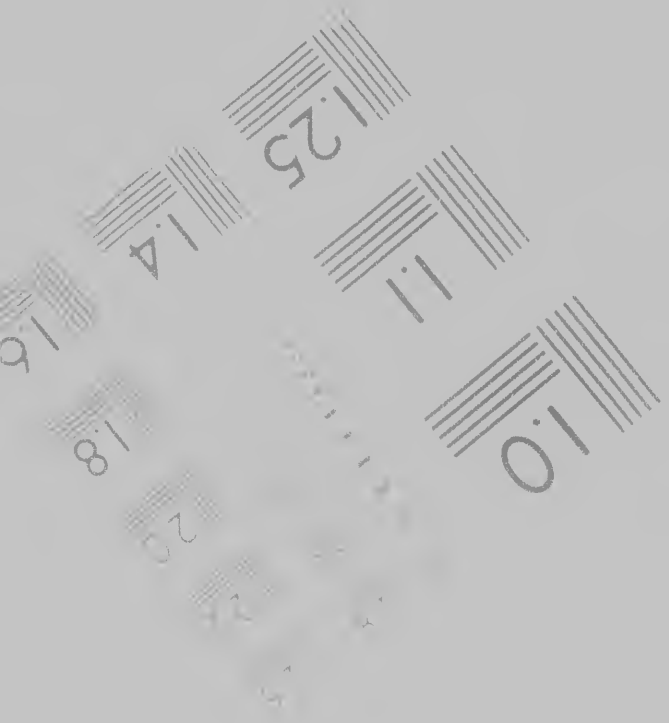


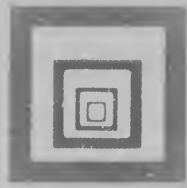
6



Photographic Sciences Corporation

23 WEST MAIN STREET
WEBSTER N.Y. 14580
716 872 4303





al Microreproductions Institut canadien de microreproductions historiques

1986



- Tight binding may cause shadows or distortion along interior margin.
La reliure serrée peut causer de l'ombre ou de la distorsion le long de la marge intérieure
- Blank leaves added during restoration may appear within the text. Whenever possible these have been omitted from filming.
Il se peut que certaines pages blanches ajoutées lors d'une restauration apparaissent dans le texte, mais, lorsque cela était possible, ces pages n'ont pas été filmées.
- Additional comments: CIRM 60 6030
- Commentaires supplémentaires

- Only edition
- Seule édition
- Pages wholly or partially obscured by slips, tissues, etc. have been so indicated in the margin of the original. Les pages totalement ou partiellement obscurcies par des lambeaux de papier, etc. ont été indiquées de la sorte dans la marge de l'original.

This item is filmed at the reduction ratio checked below.
Ce document est filmé au taux de réduction indiqué ci-dessous.

<input type="checkbox"/> 10X	<input type="checkbox"/> 14X	<input type="checkbox"/> 18X	<input type="checkbox"/> 22X	<input type="checkbox"/> 26X
<input type="checkbox"/> 12X	<input type="checkbox"/> 16X	<input type="checkbox"/> 20X	<input type="checkbox"/> 24X	

Only edition available.
Seule édition disponible

right and top to bottom
required. The following c
method

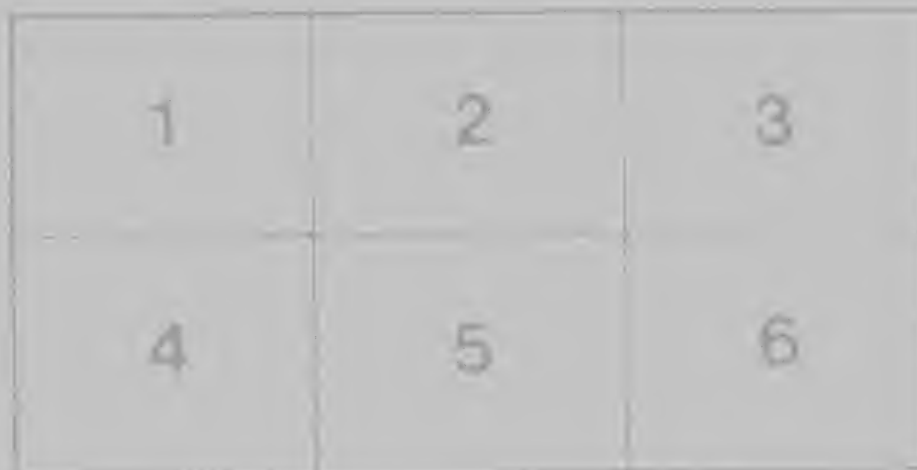
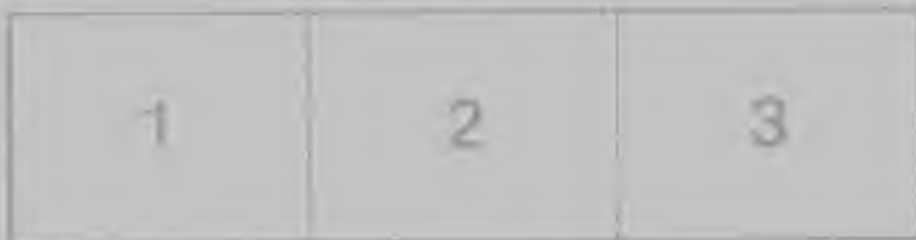
Pages wholly or partially obscured by errata
slips, tissues, etc. have been refilmed to
ensure the best possible image

Les pages totalement ou partiellement
obscurcies par un feuillet d'errata, une pelure
etc. ont été filmées à nouveau de façon à
obtenir la meilleure image possible

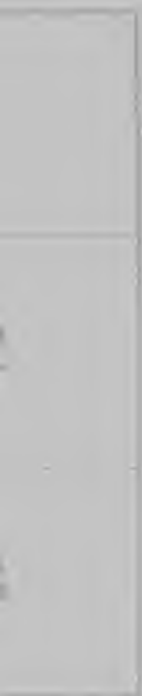


The following diagrams illustrate the

et de haut en bas, en prenant le nombre
d'images nécessaire. Les diagrammes suivants
illustrent la méthode



e nombre
DITIMPS SUIVANT



State nation on earth, independent and free ;
And we will remain with kind Heaven to aid us,
In spite of invaders, by land or by sea.
New York, the Green Mountain M-Comb, & M'Donough
The Farmer the soldier, the sailor, and Gunner ;
All parties united had plighted their honor,
To conquer or die, on the Banks of Champlain,
Our squadron triumphant, our army victorious,
Our laurels unfaded, our spartans' return'd ;
My eyes never dwell on a scene half so glorious,
My heart with such raptures, before never burn'd.
For Sandy my darling, that moment appearing,
His presence to every countenance cheering,
Was render'd to me more than doubly endearing,
As the feat he perform'd, on the Banks of Champlain
But should smiling peace, with her blessings & treasures
Annul the plans of Columbus again.
I shall never describe the enrapturing pleasures,
Which I shall experience, through life, with my sword,
If some day my brave saviour will come to alarm us,
And his millions will send their millions to harm us ;
I shall be content to see them to charm us,
And to see them on the Banks of Champlain

Whil
Break
Tot
Prob
Por d
Some
Cause
Wish
For L
What
P

While he be at take he look 'pon the matter,
But Mass McComb
Knew he had to be dead,
Break he heart broke he mind, says he
An General McComb,
Start ole Probose home,
Tot me soul den, I mus die a leffin.
Probose start so, he lef all behine,
Powder, ball, cannon, tea-pot an kittle,
Some say he catch a cole, trouble in the mine,
Cause he eat so much raw an cole vilin.
Uncle Sam berry sorry,
To be sure, for his part;
Wish he was here self up well an head,
For General McComb, an Mass Donough-
home,
When he notion for a murder see party.

Printed by Nathan Nevils, Jan

