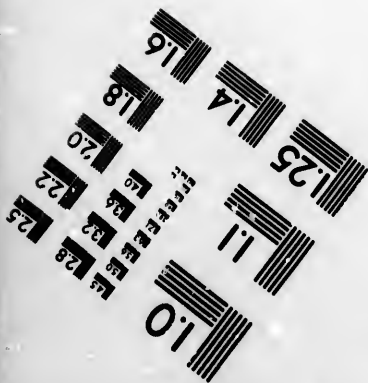
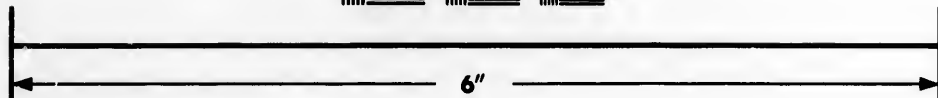
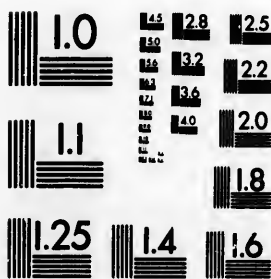


**IMAGE EVALUATION  
TEST TARGET (MT-3)**



**Photographic  
Sciences  
Corporation**

23 WEST MAIN STREET  
WEBSTER, N.Y. 14580  
(716) 872-4503

18  
20  
22  
24  
25  
28

**CIHM/ICMH  
Microfiche  
Series.**

**CIHM/ICMH  
Collection de  
microfiches.**



Canadian Institute for Historical Microreproductions / Institut canadien de microreproductions historiques

10  
11  
12  
13  
14  
15

**© 1987**

Technical and Bibliographic Notes/Notes techniques et bibliographiques

The Institute has attempted to obtain the best original copy available for filming. Features of this copy which may be bibliographically unique, which may alter any of the images in the reproduction, or which may significantly change the usual method of filming, are checked below.

L'Institut a microfilmé le meilleur exemplaire qu'il lui a été possible de se procurer. Les détails de cet exemplaire qui sont peut-être uniques du point de vue bibliographique, qui peuvent modifier une image reproduite, ou qui peuvent exiger une modification dans la méthode normale de filmage sont indiqués ci-dessous.

- Coloured covers/  
Couverture de couleur
- Covers damaged/  
Couverture endommagée
- Covers restored and/or laminated/  
Couverture restaurée et/ou pelliculée
- Cover title missing/  
Le titre de couverture manque
- Coloured maps/  
Cartes géographiques en couleur
- Coloured ink (i.e. other than blue or black)/  
Encre de couleur (i.e. autre que bleue ou noire)
- Coloured plates and/or illustrations/  
Planches et/ou illustrations en couleur
- Bound with other material/  
Relié avec d'autres documents
- Tight binding may cause shadows or distortion along interior margin/  
La reliure serrée peut causer de l'ombre ou de la distorsion le long de la marge intérieure
- Blank leaves added during restoration may appear within the text. Whenever possible, these have been omitted from filming/  
Il se peut que certaines pages blanches ajoutées lors d'une restauration apparaissent dans le texte, mais, lorsque cela était possible, ces pages n'ont pas été filmées.
- Additional comments:/  
Commentaires supplémentaires:  
[Printed ephemera] 1 sheet, [2] p.

- Coloured pages/  
Pages de couleur
- Pages damaged/  
Pages endommagées
- Pages restored and/or laminated/  
Pages restaurées et/ou pelliculées
- Pages discoloured, stained or foxed/  
Pages décolorées, tachetées ou piquées
- Pages detached/  
Pages détachées
- Showthrough/  
Transparence
- Quality of print varies/  
Qualité inégale de l'impression
- Includes supplementary material/  
Comprend du matériel supplémentaire
- Only edition available/  
Seule édition disponible
- Pages wholly or partially obscured by errata slips, tissues, etc., have been refilmed to ensure the best possible image/  
Les pages totalement ou partiellement obscurcies par un feuillet d'errata, une pelure, etc., ont été filmées à nouveau de façon à obtenir la meilleure image possible.

This item is filmed at the reduction ratio checked below/  
Ce document est filmé au taux de réduction indiqué ci-dessous.

|                          |                          |                                     |                          |                          |                          |
|--------------------------|--------------------------|-------------------------------------|--------------------------|--------------------------|--------------------------|
| 10X                      | 14X                      | 18X                                 | 22X                      | 26X                      | 30X                      |
| <input type="checkbox"/> | <input type="checkbox"/> | <input checked="" type="checkbox"/> | <input type="checkbox"/> | <input type="checkbox"/> | <input type="checkbox"/> |
| 12X                      | 16X                      | 20X                                 | 24X                      | 28X                      | 32X                      |

The copy filmed here has been reproduced thanks to the generosity of:

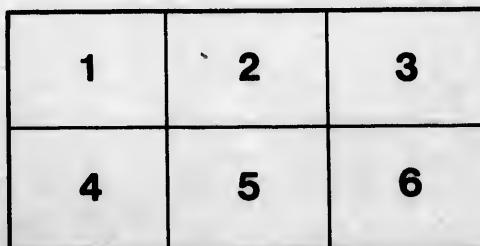
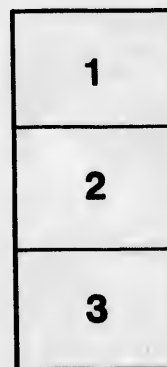
Metropolitan Toronto Library  
Canadian History Department

The images appearing here are the best quality possible considering the condition and legibility of the original copy and in keeping with the filming contract specifications.

Original copies in printed paper covers are filmed beginning with the front cover and ending on the last page with a printed or illustrated impression, or the back cover when appropriate. All other original copies are filmed beginning on the first page with a printed or illustrated impression, and ending on the last page with a printed or illustrated impression.

The last recorded frame on each microfiche shall contain the symbol  $\rightarrow$  (meaning "CONTINUED"), or the symbol  $\nabla$  (meaning "END"), whichever applies.

Maps, plates, charts, etc., may be filmed at different reduction ratios. Those too large to be entirely included in one exposure are filmed beginning in the upper left hand corner, left to right and top to bottom, as many frames as required. The following diagrams illustrate the method:



L'exemplaire filmé fut reproduit grâce à la générosité de:

Metropolitan Toronto Library  
Canadian History Department

Les images suivantes ont été reproduites avec le plus grand soin, compte tenu de la condition et de la netteté de l'exemplaire filmé, et en conformité avec les conditions du contrat de filmage.

Les exemplaires originaux dont la couverture en papier est imprimée sont filmés en commençant par le premier plat et en terminant soit par la dernière page qui comporte une empreinte d'impression ou d'illustration, soit par le second plat, selon le cas. Tous les autres exemplaires originaux sont filmés en commençant par la première page qui comporte une empreinte d'impression ou d'illustration et en terminant par la dernière page qui comporte une telle empreinte.

Un des symboles suivants apparaîtra sur la dernière image de chaque microfiche, selon le cas: le symbole  $\rightarrow$  signifie "A SUIVRE", le symbole  $\nabla$  signifie "FIN".

Les cartes, planches, tableaux, etc., peuvent être filmés à des taux de réduction différents. Lorsque le document est trop grand pour être reproduit en un seul cliché, il est filmé à partir de l'angle supérieur gauche, de gauche à droite, et de haut en bas, en prenant le nombre d'images nécessaire. Les diagrammes suivants illustrent la méthode.

John Rogers Esq Niagara

To Subscription to BANNER 1 year from 7 March 1845

to 27 Feb 1846 £ 0. 17. 6

To D. 6 March 1846 to 27 Feb 1847 0. 17. 6

£ 1. 15. 0

BANNER OFFICE,

Toronto,

20 June 1846.

DEAR SIR:

I take the liberty of annexing the above Account for the *Banner* newspaper, and of soliciting an immediate remittance of the amount. The enormous expense which has been found, by experience, to attend the sending of Collectors through the country, and the indifferent success which too often attends their exertions, has constrained me to try the effect of direct application to our friends by Mail.

The unceasing labour, both of body and mind, which attends the publication of a Newspaper, renders it absolutely necessary that pecuniary anxiety should not be superadded. The disbursements of a paper are almost all paid in advance, and the stock of materials requires a large sum of sunk capital. Newspaper subscriptions should properly all be paid in advance, but unfortunately the credit system of the country makes it almost impossible to carry this out—and Publishers are driven to give more or less credit, which the profits of the business will really not afford. The terms of credit are generally extended to the utmost limit of his means, and unless the subscriber keeps time with him he is certain to be incommoded by it. The consequence of this very generally has been, that the publisher (thrown into difficulty by the inconsiderateness of his subscribers) is forced to seek assistance from friends or through the banks, and becomes fettered by obligations to individuals—and to this process we may trace much of the time-serving too often found in Canadian Journals. Every reader of a paper who does not pay up promptly, may depend upon it, that he helps to enfeeble the honest and bold tone of the Public Press.

I speak feelingly on this subject—for the fearless manner in which *The Banner* discusses every subject which comes up, makes it necessary to depend entirely on our own resources—and I appeal to all our Subscribers that it is their *duty* to be prompt. To give six months credit

on the large number of Papers which issue from this Office requires a heavy amount of capital;—longer credit *cannot* be afforded; and the benefit gained from those Subscribers who take advantage of the cash price (15s.) is heavily over-balanced by those who greatly exceed the limited credit.

This Circular will be sent to all our Subscribers; but there are many among them to whom it is not applicable. There are numbers who pay promptly and freely, and they are cordially thanked for it; I trust they will not be offended at receiving a copy of this Circular, as it would have been invidious to make selections.

I remain,

Dear Sir,

Your most obedient servant,

**GEORGE BROWN.**

N. B.—It is not necessary to send the exact amount; any number of dollars can be placed to the credit of the party. Letters containing remittances should be marked on the cover "Money Letter," and be handed to the Post Master. All Letters sent in this way will be at the risk of this office, and be acknowledged weekly through the Paper.

G. B.

a  
he  
he  
ed

ny  
ny  
ey  
ld

rs  
ld  
er.  
w-

