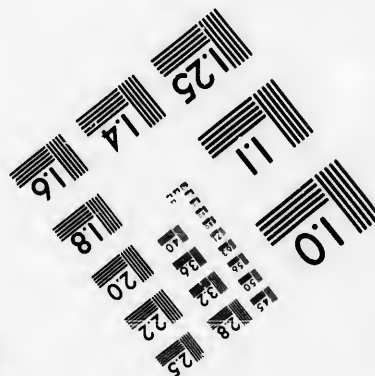
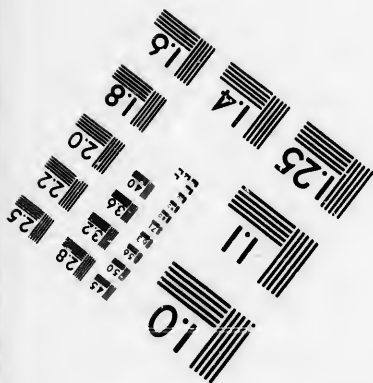
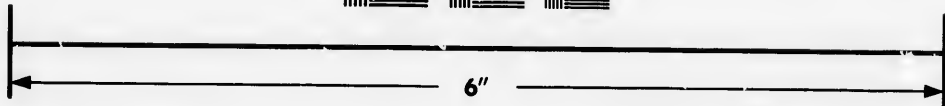
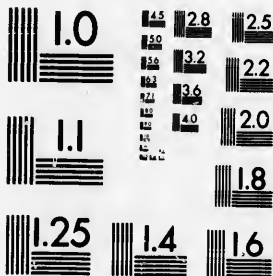


**IMAGE EVALUATION
TEST TARGET (MT-3)**



**Photographic
Sciences
Corporation**

23 WEST MAIN STREET
WEBSTER, N.Y. 14580
(716) 872-4503



**CIHM/ICMH
Microfiche
Series.**

**CIHM/ICMH
Collection de
microfiches.**



Canadian Institute for Historical Microreproductions / Institut canadien de microreproductions historiques



© 1986

Technical and Bibliographic Notes/Notes techniques et bibliographiques

The Institute has attempted to obtain the best original copy available for filming. Features of this copy which may be bibliographically unique, which may alter any of the images in the reproduction, or which may significantly change the usual method of filming, are checked below.

L'Institut a microfilmé le meilleur exemplaire qu'il lui a été possible de se procurer. Les détails de cet exemplaire qui sont peut-être uniques du point de vue bibliographique, qui peuvent modifier une image reproduite, ou qui peuvent exiger une modification dans la méthode normale de filmage sont indiqués ci-dessous.

- | | |
|--|--|
| <input type="checkbox"/> Coloured covers/
Couverture de couleur | <input type="checkbox"/> Coloured pages/
Pages de couleur |
| <input type="checkbox"/> Covers damaged/
Couverture endommagée | <input type="checkbox"/> Pages damaged/
Pages endommagées |
| <input type="checkbox"/> Covers restored and/or laminated/
Couverture restaurée et/ou pelliculée | <input type="checkbox"/> Pages restored and/or laminated/
Pages restaurées et/ou pelliculées |
| <input type="checkbox"/> Cover title missing/
Le titre de couverture manque | <input checked="" type="checkbox"/> Pages discoloured, stained or foxed/
Pages décolorées, tachetées ou piquées |
| <input type="checkbox"/> Coloured maps/
Cartes géographiques en couleur | <input type="checkbox"/> Pages detached/
Pages détachées |
| <input type="checkbox"/> Coloured ink (i.e. other than blue or black)/
Encre de couleur (i.e. autre que bleue ou noire) | <input checked="" type="checkbox"/> Showthrough/
Transparence |
| <input type="checkbox"/> Coloured plates and/or illustrations/
Planches et/ou illustrations en couleur | <input type="checkbox"/> Quality of print varies/
Qualité inégale de l'impression |
| <input type="checkbox"/> Bound with other material/
Relié avec d'autres documents | <input type="checkbox"/> Includes supplementary material/
Comprend du matériel supplémentaire |
| <input type="checkbox"/> Tight binding may cause shadows or distortion
along interior margin/
La reliure serrée peut causer de l'ombre ou de la
distorsion le long de la marge intérieure | <input type="checkbox"/> Only edition available/
Seule édition disponible |
| <input type="checkbox"/> Blank leaves added during restoration may
appear within the text. Whenever possible, these
have been omitted from filming/
il se peut que certaines pages blanches ajoutées
lors d'une restauration apparaissent dans le texte,
mais, lorsque cela était possible, ces pages n'ont
pas été filmées. | <input type="checkbox"/> Pages wholly or partially obscured by errata
slips, tissues, etc., have been refilmed to
ensure the best possible image/
Les pages totalement ou partiellement
obscurcies par un feuillet d'errata, une pelure,
etc., ont été filmées à nouveau de façon à
obtenir la meilleure image possible. |
| <input checked="" type="checkbox"/> Additional comments:/ [Printed ephemera] [4] p.
Commentaires supplémentaires: | |

This item is filmed at the reduction ratio checked below/
Ce document est filmé au taux de réduction indiqué ci-dessous.

10X	14X	18X	22X	26X	30X
				/	
12X	16X	20X	24X	28X	32X

The copy filmed here has been reproduced thanks to the generosity of:

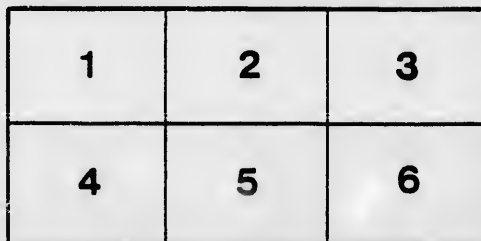
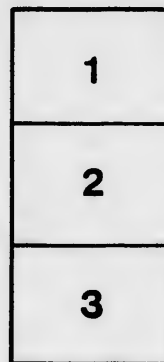
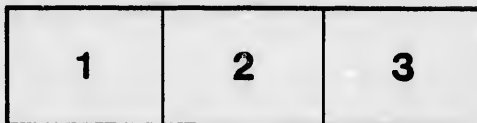
D. B. Weldon Library
University of Western Ontario
(Regional History Room)

The images appearing here are the best quality possible considering the condition and legibility of the original copy and in keeping with the filming contract specifications.

Original copies in printed paper covers are filmed beginning with the front cover and ending on the last page with a printed or illustrated impression, or the back cover when appropriate. All other original copies are filmed beginning on the first page with a printed or illustrated impression, and ending on the last page with a printed or illustrated impression.

The last recorded frame on each microfiche shall contain the symbol \rightarrow (meaning "CONTINUED"), or the symbol ∇ (meaning "END"), whichever applies.

Maps, plates, charts, etc., may be filmed at different reduction ratios. Those too large to be entirely included in one exposure are filmed beginning in the upper left hand corner, left to right and top to bottom, as many frames as required. The following diagrams illustrate the method:



L'exemplaire filmé fut reproduit grâce à la générosité de:

D. B. Weldon Library
University of Western Ontario
(Regional History Room)

Les images suivantes ont été reproduites avec le plus grand soin, compte tenu de la condition et de la netteté de l'exemplaire filmé, et en conformité avec les conditions du contrat de filmage.

Les exemplaires originaux dont la couverture en papier est imprimée sont filmés en commençant par le premier plat et en terminant soit par la dernière page qui comporte une empreinte d'impression ou d'illustration, soit par le second plat, selon le cas. Tous les autres exemplaires originaux sont filmés en commençant par la première page qui comporte une empreinte d'impression ou d'illustration et en terminant par la dernière page qui comporte une telle empreinte.

Un des symboles suivants apparaîtra sur la dernière image de chaque microfiche, selon le cas: le symbole \rightarrow signifie "A SUIVRE", le symbole ∇ signifie "FIN".

Les cartes, planches, tableaux, etc., peuvent être filmés à des taux de réduction différents. Lorsque le document est trop grand pour être reproduit en un seul cliché, il est filmé à partir de l'angle supérieur gauche, de gauche à droite, et de haut en bas, en prenant le nombre d'images nécessaire. Les diagrammes suivants illustrent la méthode.

re
détails
es du
modifier
er une
filmage

es

errata
to

pelure,
on à



32X

1880.

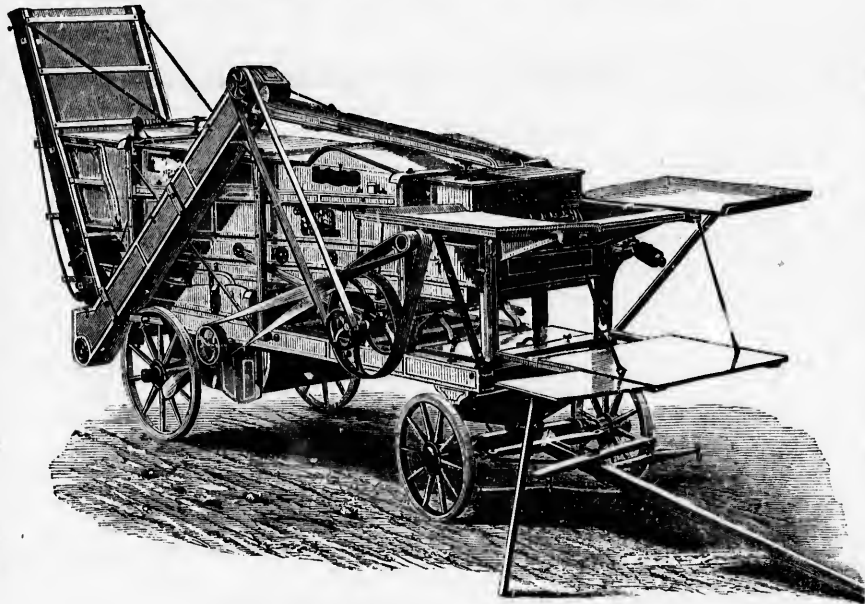
1880.

HAMILTON AGRICULTURAL WORKS.

ESTABLISHED 1836.

L. D. SAWYER & CO., HAMILTON, ONT.

GRAIN SAVER,



SHOWING BELTS.

MANUFACTURERS OF

THE CELEBRATED GRAIN SAVER,

THE ONLY

Complete Thresher and Separator

FOR STEAM POWER

IN THE DOMINION.

TIMES PRINTING COMPANY, HAMILTON.

TO THE THRESHERMEN OF CANADA.

GENTS,

We place this small sheet in your hands trusting that you will carefully peruse its contents. We have long been of the opinion that the farmers and threshermen of Canada are the best judges of Threshing Machines, and from the long list of testimonials that we have received we are not far wrong in our opinion. We claim that we have the most simple, perfect, and best constructed Separator made in Canada to-day. There are some manufacturers that claim to make a Thresher *that is not a vibrator nor yet a canvas belt machine, but that it has all the best qualities of both.* This no doubt is to secure both classes, those who use the Canvas Belt, and those who use the Vibrator Grain Saver. You have heard of the man astride of the fence, ready to jump on either side that best suits his purpose; but the least intelligence can easily see that in buying such a combination he gets neither the one nor the other. Take for instance a combined reaper and mower, it either cuts too slow for a mower or too fast for a reaper, it is not a perfect machine in either capacity. Our Grain Saver Separator has now been before, and used by the public of Canada for over eight years, and the demand has steadily increased each year, having now over 1000 machines in the country, acknowledged on all sides to be the most perfect Thresher and Separator in the hands of threshermen at the present time, being able to thresh all kinds of grains, also Timothy, Flax and Clover Seeds, and it is the only Thresher that will dispose of Peas satisfactorily, having more sieve room and being wider behind cylinder than any other Thresher made in Canada.

IN CONSTRUCTION,

It is simplicity itself, being composed of less parts than any other Thresher, at the same time having the most ample separating and cleaning capacity demanded, being peculiarly adapted for steam power.

IN BUILD AND DURABILITY,

It is A 1, being made of the best material and by the best help and machinery that can be procured.

IN SATISFACTION TO THE FARMER

It cannot be surpassed, threshing his grain fit for market and wasting none, threshing more grain in less time with better results than any other, thereby saving grain, feed, horses and time, all of which represent the farmer's capital.

IN PRICE,

Combined with durability, simplicity, satisfaction and ease in running, it is the cheapest Thresher that can be bought.

Read the testimonials attached, and for further particulars apply to us or our authorized agents.

L. D. SAWYER & CO.,

Hamilton Agricultural Works,

HAMILTON, ONT.

TESTIMONIALS.

Easton's Corners, Sept. 24, 1879.

MESSRS. L. D. SAWYER & Co.

DEAR SIRS,—Enclosed find settlement for Grain Saver and Power. I may just say here that the machines give satisfaction wherever used. Parties are coming seven and eight miles to get me to do their threshing, and I do think that if people could wait on me we could get work all the year around. The Power works equally as good as the Separator.

Yours truly,

JOHN FERGUSON.

Huntingdon, Dec. 4, 1878.

MESSRS. L. D. SAWYER & Co.

DEAR SIRS,—We purchased one of your "Grain Savers," and we must say we think it is the best machine made in every respect. We have threshed nearly 15,000 bushels grain this fall, and it has given every satisfaction to us and everyone we threshed for, and our expenses for breakages for the season has only been about fifty cents.

Yours truly,

ROBERT WILSON.
JOHN ERWIN.

Chatham, 27th Sept., 1879.

SIR,—We, the undersigned, employed Messrs. Nat. Jones & Son in threshing for us this fall with their Brantford Champion Steam Engine and Sawyer's Hamilton Grain Saver Separator. The engine is all that is claimed for it, using less fuel and water than other engines, having ample power under all circumstances and being perfectly spark proof. The Vibrator Separator threshes fast, clean and does not waste grain, and is in every respect a first-class machine. We recommend these machines to all farmers desiring satisfaction in threshing, also Nat. Jones & Son as parties who understand their business and do it thoroughly.

(Signed) JOHN BRADY.
DEAN COLBY.
DUNCAN GRAY.
JOHN ETCHER.
CHAS. FEEREY.
J. DONOVON.
J. DONOVON.
D. DOWINE.

To R. SOUTAR,
Agent for makers of both machines.

Markham, Jan. 17, 1880.

MESSRS. L. D. SAWYER & Co.

GENTS,—I take great pleasure in writing you a few lines to let you know how my machines are getting along. With the "Grain Saver" I am very well pleased it has given good satisfaction, and I consider it the best and most durable Thresher made. I have threshed 90 days, threshing a total of 60,000 bushels grain. I thought she run better every day I used her. She run day after day until the jobs were finished without stopping by belts coming off, &c. For fast threshing it cannot be beat. Have threshed 700 bushels fall wheat, 1000 bushels barley, and 1300 bushels oats and barley in ten hours each, and I threshed a lot of 400 bushels

wheat in less than four hours, the straw being long and tough. I have threshed sheaves as wet as manure—beats anything I ever saw. Some farmers say that they have saved fully \$20 by getting the Grain Saver to do their threshing. Hundreds of visitors came to see me thresh and were astonished at the nice work it did. Other threshermen got up to feed and tried to choke it down, but they found they were not feeding a little canvas belt separator, and when they fed until the sweat run down their breeches they got down and out, declaring that the Grain Saver was ahead of anything yet. In starting I had a great many enemies, but the Grain Saver beats them all, and I could have had enough jobs to run two machines. The Clover Mill also gives every satisfaction and is without doubt the best mill made. My average threshing was from 20 to 30 bushels seed. I have run the above machines with the Champion Engine, which gives every satisfaction.

Yours truly,

S. P. RAYMER.

Wilsonville, Man., Dec. 11, 1879.

L. D. SAWYER & Co.

GENTS,—The "Grain Saver" which we bought from you cannot be beat for ease of management, fast threshing and doing its work well, and not a cent out for repairs. We have threshed at the rate of four bushels oats per minute and 160 bushels wheat per hour. We would advise intending purchasers to buy the Grain Saver by all means.

Yours truly,

BLAIR, MOORE & HENDERSON.

Winnipeg, Man., Nov. 15, 1879.

GENTLEMEN,—I have much pleasure in testifying to the satisfaction I have had from the "Grain Saver" purchased from you this season. I have threshed 20,000 bushels in six weeks. All those for whom I have threshed are highly satisfied and have promised me their work for next season. In fact I am so well pleased that I am going to order another from your agent for 1880. I most decidedly recommend any one wanting a threshing machine to purchase a Sawyer Grain Saver; it is the best in the country.

Yours truly,

CHAS. O. EVANS.

Who Can Beat it?

DAVID KAY, Vroomanton, writes, Dec. 1st, 1879—

DEAR SIR,—I am getting along first rate with the "Grain Saver," can beat all other threshers that come along. We threshed last week two bushels a minute right along for two days, fall wheat two and a half bushels, and five bushels oats. Who can beat that? Will get a busy run next season if I am alive and well.

STEPHEN SPECK and WILLIAM H. FEATHERSTON,
Waterdown, write—

We cannot speak too highly of the "Grain Saver."

It does first-class work—threshing as fast or faster than any machine we know of. Have threshed in a day 600 bushels of wheat, 700 bushels of barley and 1,100 bushels of oats, respectively. It runs easier than any other of the many machines we have ever worked within the 25 years we have threshed, and know it is less complicated than the old style of machine, having but very few pulleys and belts, and costs but very little to keep in repair, we consider it as durable as any Thresher, and far easier to keep in order.

We, the undersigned, have had our grain threshed by, and seen the working of the "Grain Saver" Thresher, made by L. D. SAWYER & CO., Hamilton, and owned by Speck & Featherston, and would recommend it as the best Thresher we have ever seen, for the following reasons, viz:—

1st.—It runs easier than any other.
 2d.—It threshes faster.
 3d.—It does not waste or throw over any grain.
 4th.—It is less liable to get out of order or break down.
 5th.—It is much easier to clean up than the old style of machines.

6th.—It is better in all respects than the old style, having fewer pulleys and belts, and most breakages can be fixed without going to shop.

We would not have any other kind of machine do our threshing, if we could possibly get a Hamilton "Grain Saver."

WILLIAM BEEFORTH, Nelson.	PETER GREEN, East Flamboro'.
WILLIAM HALL.	THOMAS LITTLE.
EDWARD CLADGON.	RALPH FEATHERSTON.
WM. MACDONALD.	REUBEN SPARKS.
BURGE GUNBY, Nelson.	JAMES MORDEN.
	PETER C. MORDEN.

Saves Three Men and can Thresh 1,400 Bushels in a Day. A Perfect Cleaner and Thresher.

J. G. HOPPER, Moretown, writes—

I can heartily recommend the Hamilton "Grain Saver" Threshing Machine as being the best in the market; very easy on horses; and a perfect Cleaner and Thresher. The side carriers are complete and save three men. We have more orders than we can fill, and men from all parts come to see it work, and pronounce it far in advance of other kinds. I have threshed 1,100 bushels of grain in one day, and can thresh 1,400 bushels for money. Have threshed 225 bushels of oats in 1 hour and ten minutes, and 212 of wheat in 2½ hours, all cleaned fit for the market. I have saved 7 bushels of clover seed with your seed screen for one farmer. Men who have other machines say they are not to be compared with your "Grain Saver." I also threshed 400 bushels peas for one man who marketed them as the cleanest threshed that ever came into the market. No one in want can go astray in buying a Hamilton "Grain Saver."

A Club of Fifteen Highly Pleased.

Avonton.

MESSRS. L. D. SAWYER & CO.

DEAR SIRS—We, the undersigned, a club of fifteen persons, having purchased a "Grain Saver" Threshing Machine from your agent, desire to state that it has given entire satisfaction to all, and we are highly pleased with the working of the machine, and to those intending

to purchase, we would advise them by all means to buy the "Grain Saver" Thresher of your excellent manufacture.

JOHN SHAPTON.	JOHN MURRAY, Jun.
JOHN MURRAY, Sen.	JOHN SMITH.
WM. TAYLOR.	GEORGE GRIEVE.
ROBERT SMART.	WM. HOY, Sen.
ALEX. TELFER.	ADAM GRIEVE.
FRANCIS BELL.	THOS. ARMSTRONG.
ALEX. HOTTSON.	WM. HOY, Jun.
	WM. HILL.

Does not get out of Order, and the Fastest Thresher.

MATHEW & WM. ORR, Crowland, write—

The "Grain Saver" Threshing Machine we purchased from you works perfectly and gives the best of satisfaction to all we thresh for, in fact it is the best machine ever brought in this neighborhood. It runs easier and threshes much faster than other machines, wastes no grain, and does not get out of order. We use the picker and would not do without it. Out of poor wheat we have threshed 500 bushels in a day, and can thresh 1,000 bushels of oats with perfect ease.

Runs Ten Days in Succession without even a Belt Coming off.

R. B. BENNETT, Seymour, writes—

I simply state that your "Grain Saver" will thresh perfectly all and as fast as it can be got to the machine. I have threshed 100 bushels per hour without any trouble. It does not get out of order, and I have run ten days in succession without the least trouble or even a belt coming off. It will thresh the dampest straw; peas from 6 to 9 feet long, rye the tallest grown, but all the same it passes along as the shortest barley would. It saves all the grain, and the Fanner can be perfectly regulated at the pleasure of the thresher.

CHARLES and H. E. EVERETT, Rose Hill Farm, Haysville, Ont., write—

SIR—We have done a large business in the threshing line this season. We have threshed 109 days, and have five or six more days' work yet to complete. We don't think there is another machine in the market that ever gave such satisfaction as this one has done. We have had twice as much threshing as we could do and have confidence that this machine shakes more grain out of the straw than pays the threshing bill. With your machine we can thresh peas as fast as eight or nine men can feed them to it.

200 Bushels of Oats Per Hour.

CHAS. MAIDMENT, Forest, writes—

No other Thresher will at all compare with your "Grain Saver" Threshing Machine. Threshing absolutely clean and in all kinds and conditions of grain; it is easy on the teams, and gives good satisfaction to all, and is pronounced the best they have used. We have threshed 700 bushels in a day and 200 bushels of oats per hour by the watch.

MESSRS. WELCH & DODD, Prince Edwards, write—

We have had three other machines, but never knew what threshing was till we got your "Grain Saver," which is only play to attend to in comparison with others. It does its work better and faster.

