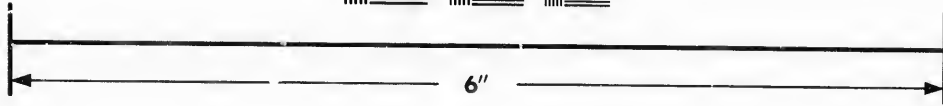
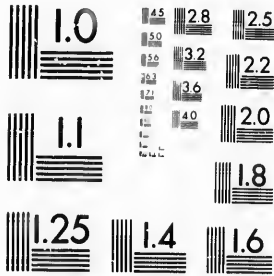
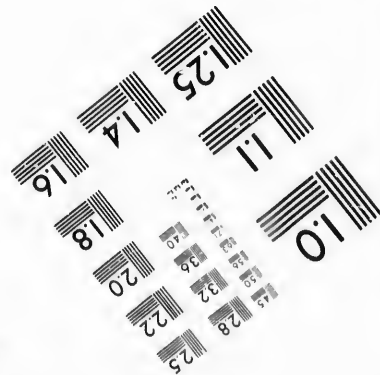
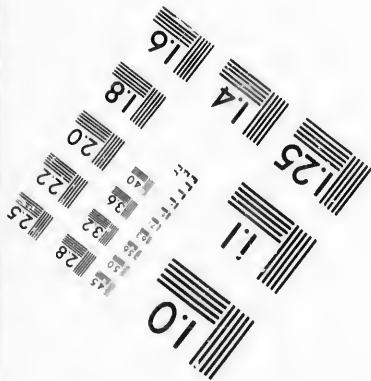


**IMAGE EVALUATION
TEST TARGET (MT-3)**



Canadian



**Photographic
Sciences
Corporation**

23 WEST MAIN STREET
WEBSTER, N.Y. 14580
(716) 872-4503

**CIHM/ICMH
Microfiche
Series.**

**CIHM/ICMH
Collection de
microfiches.**



Canadian Institute for Historical Microreproductions / Institut canadien de microreproductions historiques

© 1987

Technical and Bibliographic Notes/Notes techniques et bibliographiques

The Institute has attempted to obtain the best original copy available for filming. Features of this copy which may be bibliographically unique, which may alter any of the images in the reproduction, or which may significantly change the usual method of filming, are checked below.

L'Institut a microfilmé le meilleur exemplaire qu'il lui a été possible de se procurer. Les détails de cet exemplaire qui sont peut-être uniques du point de vue bibliographique, qui peuvent modifier une image reproduite, ou qui peuvent exiger une modification dans la méthode normale de filmage sont indiqués ci-dessous.

- | | |
|--|--|
| <input type="checkbox"/> Coloured covers/
Couverture de couleur | <input type="checkbox"/> Coloured pages/
Pages de couleur |
| <input type="checkbox"/> Covers damaged/
Couverture endommagée | <input checked="" type="checkbox"/> Pages damaged/
Pages endommagées |
| <input type="checkbox"/> Covers restored and/or laminated/
Couverture restaurée et/ou pelliculée | <input type="checkbox"/> Pages restored and/or laminated/
Pages restaurées et/ou pelliculées |
| <input type="checkbox"/> Cover title missing/
Le titre de la couverture manque | <input checked="" type="checkbox"/> Pages discoloured, stained or foxed/
Pages décolorées, tachetées ou piquées |
| <input type="checkbox"/> Coloured maps/
Cartes géographiques en couleur | <input type="checkbox"/> Pages detached/
Pages détachées |
| <input type="checkbox"/> Coloured ink (i.e. other than blue or black)/
Encre de couleur (i.e. autre que bleue ou noire) | <input checked="" type="checkbox"/> Showthrough/
Transparence |
| <input type="checkbox"/> Coloured plates and/or illustrations/
Planches et/ou illustrations en couleur | <input checked="" type="checkbox"/> Quality of print varies/
Qualité inégale de l'impression |
| <input type="checkbox"/> Bound with other material/
Relié avec d'autres documents | <input type="checkbox"/> Includes supplementary material/
Comprend du matériel supplémentaire |
| <input type="checkbox"/> Tight binding may cause shadows or distortion
along interior margin/
La reliure serrée peut causer de l'ombre ou de la
distorsion le long de la marge intérieure | <input type="checkbox"/> Only edition available/
Seule édition disponible |
| <input type="checkbox"/> Blank leaves added during restoration may
appear within the text. Whenever possible, these
have been omitted from filming/
Il se peut que certaines pages blanches ajoutées
lors d'une restauration apparaissent dans le texte,
mais, lorsque cela était possible, ces pages n'ont
pas été filmées. | <input type="checkbox"/> Pages wholly or partially obscured by errata
slips, tissues, etc., have been refilmed to
ensure the best possible image/
Les pages totalement ou partiellement
obscurcies par un feuillet d'errata, une pelure,
etc., ont été filmées à nouveau de façon à
obtenir la meilleure image possible. |
| <input checked="" type="checkbox"/> Additional comments: /
Commentaires supplémentaires: | [Printed ephemera] 1 sheet (verso blank) There are some creases in the middle of the pages. |

This item is filmed at the reduction ratio checked below/
Ce document est filmé au taux de réduction indiqué ci-dessous.

10X	14X	18X	22X	26X	30X
<input type="checkbox"/>	<input type="checkbox"/>	<input type="checkbox"/>	<input checked="" type="checkbox"/>	<input type="checkbox"/>	<input type="checkbox"/>
12X	16X	20X	24X	28X	32X

The copy filmed here has been reproduced thanks to the generosity of:

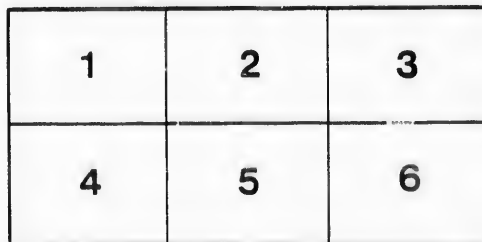
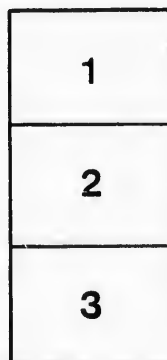
New Brunswick Museum
Saint John

The images appearing here are the best quality possible considering the condition and legibility of the original copy and in keeping with the filming contract specifications.

Original copies in printed paper covers are filmed beginning with the front cover and ending on the last page with a printed or illustrated impression, or the back cover when appropriate. All other original copies are filmed beginning on the first page with a printed or illustrated impression, and ending on the last page with a printed or illustrated impression.

The last recorded frame on each microfiche shall contain the symbol \rightarrow (meaning "CONTINUED"), or the symbol ∇ (meaning "END"), whichever applies.

Maps, plates, charts, etc., may be filmed at different reduction ratios. Those too large to be entirely included in one exposure are filmed beginning in the upper left hand corner, left to right and top to bottom, as many frames as required. The following diagrams illustrate the method:



L'exemplaire filmé fut reproduit grâce à la générosité de:

New Brunswick Museum
Saint John

Les images suivantes ont été reproduites avec le plus grand soin, compte tenu de la condition et de la netteté de l'exemplaire filmé, et en conformité avec les conditions du contrat de filmage.

Les exemplaires originaux dont la couverture en papier est imprimée sont filmés en commençant par le premier plat et en terminant soit par la dernière page qui comporte une empreinte d'impression ou d'illustration, soit par le second plat, selon le cas. Tous les autres exemplaires originaux sont filmés en commençant par la première page qui comporte une empreinte d'impression ou d'illustration et en terminant par la dernière page qui comporte une telle empreinte.

Un des symboles suivants apparaîtra sur la dernière image de chaque microfiche, selon le cas: le symbole \rightarrow signifie "A SUIVRE", le symbole ∇ signifie "FIN".

Les cartes, planches, tableaux, etc., peuvent être filmés à des taux de réduction différents. Lorsque le document est trop grand pour être reproduit en un seul cliché, il est filmé à partir de l'angle supérieur gauche, de gauche à droite, et de haut en bas, en prenant le nombre d'images nécessaire. Les diagrammes suivants illustrent la méthode.

MECHANICS' INSTITUTE!

SATURDAY EVENING, APRIL 18.

PROF. A. O'LEARY

WILL DELIVER

A LECTURE

ON THE

THROAT & LUNGS

And the Diseases to which they are liable, and the best means of preserving them in health, and of

CURING A COLD,

By an ORIGINAL, SIMPLE, and INFALLIBLE REMEDY. And how to PREVENT CONSUMPTION, and to cure it, if taken in time.

THE SUBJECT WILL BE DISCUSSED WITH REFERENCE TO

1st. The Chest and its appearance in Man and in Woman, in Health and Disease;

Broad Chests and Narrow ones; Round and Flat Chests; Depth of the Lungs; Prominent Sternum, or "chicken breast," and what it indicates; Prominences on the sides of the Chest; Tumors, &c.; Indentations of the Sternum (breast bone) and of the Ribs in different parts of the Chest; Indentation, or falling in, of the Throat at the end of the Sternum, and what it indicates; The Neck and Cheek as signs of consumptive tendencies, or the contrary; Goitre, or Thick Neck, its cause and its effects on the constitution, and what to do for it. All this will be amply illustrated by means of fine models of the Chest of Man and Woman in full form and figure, prepared expressly for such Lectures before promiscuous and refined audiences--at once a pleasing and profitable study.

2d. The Heart and its uses, illustrated by the dissection of a fine model of the heart of a man

and one of a woman. They will be handed round to the audience to afford opportunity for a closer inspection, as will all the models of the smaller parts, as those of the Lungs, Trachea, Larynx and Vocal Organs, Tonsils, Tongue, &c.

1st. The Chest and its appearance in Man and in Woman, in Health and Disease; Broad Chests and Narrow ones; Round and Flat Chests; Depth of the Lungs; Prominent Sternum, or "chicken breast," and what it indicates; Prominences on the sides of the Chest; Tumors, &c.; Indentations of the Sternum (breast bone) and of the Ribs in different parts of the Chest; Indentation, or falling in, of the Throat at the end of the Sternum, and what it indicates; The Neck and Cheek as signs of consumptive tendencies, or the contrary; Goitre, or Thick Neck, its cause and its effects on the constitution, and what to do for it. All this will be amply illustrated by means of fine models of the Chest of Man and Woman in full form and figure, prepared expressly for such Lectures before promiscuous and refined audiences—at once a pleasing and profitable study.

2d. The Heart and its uses, illustrated by the dissection of a fine model of the heart of a man and one of a woman. They will be handed round to the audience to afford opportunity for a closer inspection, as will all the models of the smaller parts, as those of the Lungs, Trachea, Larynx and Vocal Organs, Tonsils, Tongue, &c.

3d. The Lungs and their structure, parts, and uses in Health; their appearance and trouble in Disease, in Pleurisy, Pneumonia, Phthisis or Consumption, Congestion, Inflammation, &c., and when a Cold settles on the Lungs; how to prevent catching Cold, and how to cure it, by a remedy that I have never known to fail, though often tried, and one to which I believe I was the first to call attention—one of inestimable value in such a climate as ours; Cold on the Lungs as leading to consumption, aggravated by other causes, and what they are; Hemorrhage or Bleeding from the Lungs, and how to know whether from the Lungs or Stomach, its effects and what to do for it; The signs of Consumption of different kinds; how determined; The Stethoscope, and how it is used; "Sounding the Chest;" How to prevent and how to cure Consumption; not very difficult if taken in season and managed wisely and carefully. Medicines of little avail; Inhalation, Change of Climate; which best; Air; Light; Exercise; Bathing, &c. All this will be as fully discussed, as time will permit, and illustrated by means of models of the Lungs of a Man and Woman, and a stethoscope of the latest and most approved form.

4th. The Bronchial Tubes and Trachea (Windpipe); Bronchitis, and how to prevent and cure it; Its relation to Consumption; Highly magnified models of the organs.

5th. The Larynx and Organs of the Voice; Laryngitis; Loss of Voice; Hoarseness; How to preserve and strengthen the Voice. Greatly enlarged models of the Organs, showing them internally and externally.

6th. The Pharynx; Tonsils; Palate; Nasal Passages; Sore Throat; Dyptheria; Tonsillitis; CATARRH, &c., with a very fine and nice dissection of the Organs, such as is rarely seen, but one of great beauty, (scientifically) and one that never fails to delight an intelligent audience.

This is a Lecture in which ladies almost invariably take particular interest, coming out sometimes in great numbers, in the most inclement weather, and frequently in delicate health, to attend it, and they are often kind enough to assure me that they do not regret the exposure, and that they would not have missed the Lecture for any consideration. To all such, however sensitive in the Lungs, I would say that comfortably clad and with dry feet and a light woolen muffler upon the mouth, so as to breathe through it only, as a respirator, while out doors, there is no danger, while there may be much pleasure and profit in attending the Lecture. Commences at 8 o'clock, P. M., and continues just one hour.

ADMISSION **15 CENTS.**

Card to the Remainder of the Course, 75 Cents.

On the reverse side of the card is a very convenient Catalogue of the choice Paintings of a large collection, carefully numbered, so that when allusion is made to any of the portraits, it is easy to find it by reference to the card.

Private Examinations of the Lungs, with advice as to their Treatment, and Consultations as to the general Health, Habits, &c., during the course, daily, after 10 A. M., at **FISHER HOUSE, UP STAIRS, CARD ON THE DOOR.**

OPINIONS OF THE PRESS.

PROF. O'LEARY.—Although he has an Irish name, he is a good specimen of the Massachusetts Yankee, of the best type. He is almost as graphic as Gough—humorous at times, and sometimes severe; but not a foolish, trite, or trifling expression escaped his lips. Being amply provided with illustrations, both natural and artificial, he is able to make his subject perfectly comprehensible to the commonest understanding.

Those who are in search of practical knowledge of the laws of health and adaptation will do well to attend; and even those who have no higher aim than the enjoyment of a few evenings of rational amusement, will be well compensated.—*Pittsburgh (Pa.) Gazette.*

AT TIMES he is the incarnation of eloquence in language, intonation of voice and manner, bringing down thunders of applause.—*Albany Courier.*

HE IS AN easy, fluent speaker, has rare descriptive powers and more than ordinary culture, accompanied with great tact and ingenuity.—*Lockport Union.*

HE IS NOT dry and tedious, but most intensely interesting and pleasing. One moment his audience is as still and solemn as the tomb, and in the next are in a perfect uproar. They never get tired. He is a rare and eloquent speaker. Lots of people who wouldn't take the trouble to practice what the Professor teaches, go and hear him just because they love to hear him talk.—*Broad Arc, Richmond, Ind.*

PROF. O'LEARY resumes his lectures at St. James' Hall this evening. They are in a marked degree both interesting and instructive, and we are glad to know that they are being appreciated. The Professor is a very fluent speaker, and possesses quite a remarkable ability in the delineation of character.—*Buffalo Commercial Advertiser.*

IF THERE is one man in the world doing more real good for mankind than another—and we are charitable enough to believe there is—that man is Prof. O'Leary.—*Schenectady Star.*

