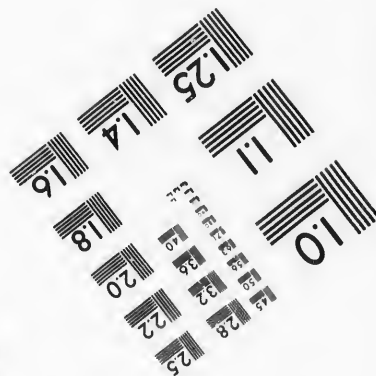
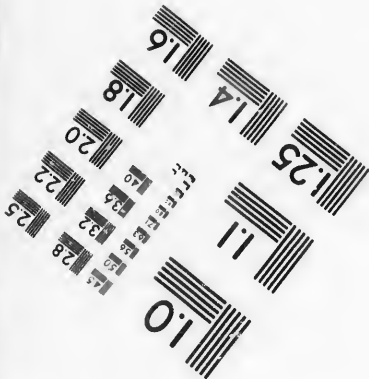
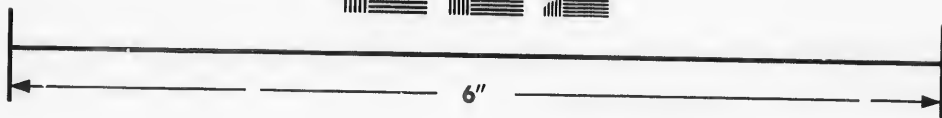
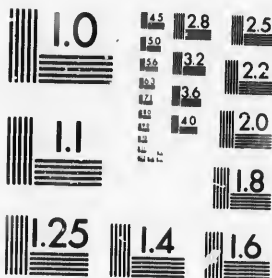


**IMAGE EVALUATION  
TEST TARGET (MT-3)**



**Photographic  
Sciences  
Corporation**

23 WEST MAIN STREET  
WEBSTER, N.Y. 14580  
(716) 872-4503

**CIHM/ICMH  
Microfiche  
Series.**

**CIHM/ICMH  
Collection de  
microfiches.**



Canadian Institute for Historical Microreproductions / Institut canadien de microreproductions historiques

**© 1986**



The copy filmed here has been reproduced thanks to the generosity of:

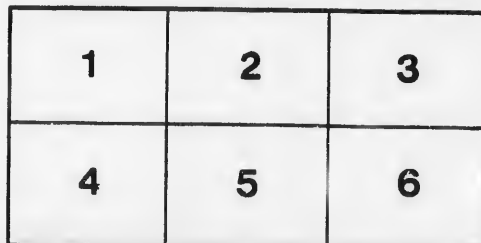
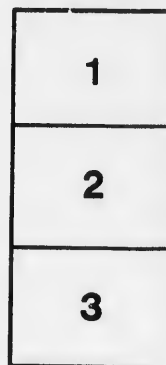
D. B. Weidon Library  
University of Western Ontario  
(Regional History Room)

The images appearing here are the best quality possible considering the condition and legibility of the original copy and in keeping with the filming contract specifications.

Original copies in printed paper covers are filmed beginning with the front cover and ending on the last page with a printed or illustrated impression, or the back cover when appropriate. All other original copies are filmed beginning on the first page with a printed or illustrated impression, and ending on the last page with a printed or illustrated impression.

The last recorded frame on each microfiche shall contain the symbol  $\rightarrow$  (meaning "CONTINUED"), or the symbol  $\nabla$  (meaning "END"), whichever applies.

Maps, plates, charts, etc., may be filmed at different reduction ratios. Those too large to be entirely included in one exposure are filmed beginning in the upper left hand corner, left to right and top to bottom, as many frames as required. The following diagrams illustrate the method:



L'exemplaire filmé fut reproduit grâce à la générosité de:

D. B. Weidon Library  
University of Western Ontario  
(Regional History Room)

Les images suivantes ont été reproduites avec le plus grand soin, compte tenu de la condition et de la netteté de l'exemplaire filmé, et en conformité avec les conditions du contrat de filmage.

Les exemplaires originaux dont la couverture en papier est imprimée sont filmés en commençant par le premier plat et en terminant soit par la dernière page qui comporte une empreinte d'impression ou d'illustration, soit par le second plat, selon le cas. Tous les autres exemplaires originaux sont filmés en commençant par la première page qui comporte une empreinte d'impression ou d'illustration et en terminant par la dernière page qui comporte une telle empreinte.

Un des symboles suivants apparaîtra sur la dernière image de chaque microfiche, selon le cas: le symbole  $\rightarrow$  signifie "A SUIVRE", le symbole  $\nabla$  signifie "FIN".

Les cartes, planches, tableaux, etc., peuvent être filmés à des taux de réduction différents. Lorsque le document est trop grand pour être reproduit en un seul cliché, il est filmé à partir de l'angle supérieur gauche, de gauche à droite, et de haut en bas, en prenant le nombre d'images nécessaire. Les diagrammes suivants illustrent la méthode.

# CHANCER

In Chancery,---

STI

By virtue of the decree and final order in the above cause, and with the approbation of JAMES SHANLY, Esq.

# PUBLIC

At the Auction

# Mr. A. S. I

on Dundas Street, in the

on Dundas Street, in the

# On Saturday 1st Feb

# EVERY SALE.

**STILES**

**VS.**

**NICKLES.**

and final order made in the above  
SHANLY, Esquire, Master of this Court at London, will be sold by

# AUCTION

Auction Rooms of

# S. EMERY

Street, in the City of London,

Street, in the City of London,

February A.D. 1868

on Dundas Street, in the C

# On Saturday, 1st Feb

at noon, in one Lot, the following

**The North half of Lot No. 5,  
the Township of London, in t**

**The Farm is 14 Miles dista**  
ists of 100 Acres, 45 of which are cleared and fenced. The  
**BARN**, in a fair state of repair.

The Land will be sold subject to an annuity of \$40, paya  
now of the age of 75 years, and subject also to the dower of

The purchaser shall at the time of sale, pay down a deposi  
shall pay the balance of the purchase money, with interest, in

All parties to the suit, with the exception of the Vendor (

In other respects the conditions of sale are the standing c

Further particulars may be had on application to Messrs.  
or to the Auctioneer.

Dated, 3rd January, 1868.

**W. R. MEREDITH,**

**Vendor's Solicitor.**

FREE PRESS PRINTING ESTABLISHM

Street, in the City of London,

**1st February, A.D. 1868**

, the following Lands, that is to say :

**No. 5, in the 12th concession of  
London, in the County of Middlesex.**

**Plots distant from London, and con-  
fenced. The Buildings are a LOG DWELLING HOUSE and**

of \$40, payable during the life-time of David Graham, who is  
the dower of the defendant, Elizabeth Nickles, aged 38 years,  
down a deposit of \$15 for every \$100 of his purchase money, and  
with interest, in one month after the sale.

of the Vendor (the Plaintiff), are to be at liberty to bid.

the standing conditions of the Court of Chancery.

tion to Messrs. Scatcherd & Meredith, or Richard Bayly, Esquire,

**J. SHANLY,**

**MASTER AT LONDON**

itor.

NG ESTABLISHMENT, RICHMOND STREET, LONDON.



