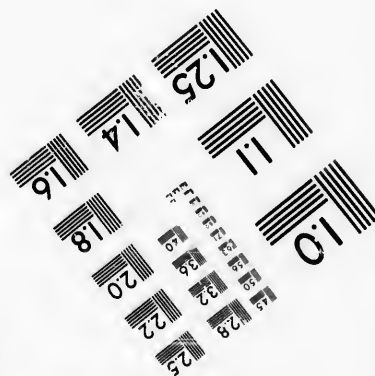
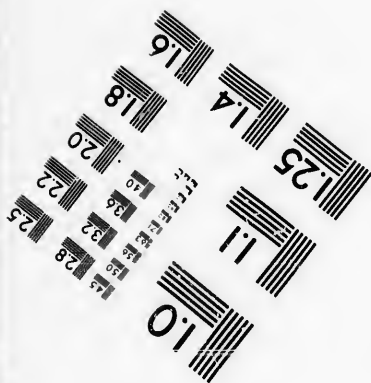
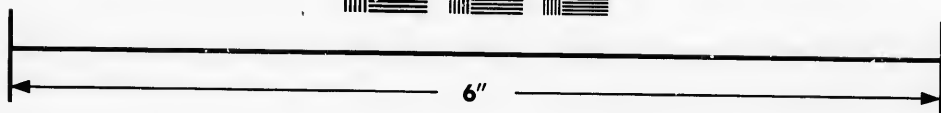
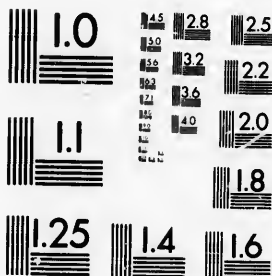


**IMAGE EVALUATION
TEST TARGET (MT-3)**



**Photographic
Sciences
Corporation**

23 WEST MAIN STREET
WEBSTER, N.Y. 14580
(716) 872-4503

1.5
1.8
2.0
2.2
2.5
2.8
3.2
3.6
4.0

**CIHM/ICMH
Microfiche
Series.**

**CIHM/ICMH
Collection de
microfiches.**



Canadian Institute for Historical Microreproductions / Institut canadien de microreproductions historiques

CI
57

© 1986

Technical and Bibliographic Notes/Notes techniques et bibliographiques

The Institute has attempted to obtain the best original copy available for filming. Features of this copy which may be bibliographically unique, which may alter any of the images in the reproduction, or which may significantly change the usual method of filming, are checked below.

L'Institut a microfilmé le meilleur exemplaire qu'il lui a été possible de se procurer. Les détails de cet exemplaire qui sont peut-être uniques du point de vue bibliographique, qui peuvent modifier une image reproduite, ou qui peuvent exiger une modification dans la méthode normale de filmage sont indiqués ci-dessous.

- | | |
|--|--|
| <input type="checkbox"/> Coloured covers/
Couverture de couleur | <input type="checkbox"/> Coloured pages/
Pages de couleur |
| <input type="checkbox"/> Covers damaged/
Couverture endommagée | <input type="checkbox"/> Pages damaged/
Pages endommagées |
| <input type="checkbox"/> Covers restored and/or laminated/
Couverture restaurée et/ou pelliculée | <input type="checkbox"/> Pages restored and/or laminated/
Pages restaurées et/ou pelliculées |
| <input type="checkbox"/> Cover title missing/
Le titre de couverture manque | <input checked="" type="checkbox"/> Pages discoloured, stained or foxed/
Pages décolorées, tachetées ou piquées |
| <input type="checkbox"/> Coloured maps/
Cartes géographiques en couleur | <input type="checkbox"/> Pages detached/
Pages détachées |
| <input type="checkbox"/> Coloured ink (i.e. other than blue or black)/
Encre de couleur (i.e. autre que bleue ou noire) | <input checked="" type="checkbox"/> Showthrough/
Transparence |
| <input type="checkbox"/> Coloured plates and/or illustrations/
Planches et/ou illustrations en couleur | <input type="checkbox"/> Quality of print varies/
Qualité inégale de l'impression |
| <input type="checkbox"/> Bound with other material/
Relié avec d'autres documents | <input type="checkbox"/> Includes supplementary material/
Comprend du matériel supplémentaire |
| <input type="checkbox"/> Tight binding may cause shadows or distortion
along interior margin/
La reliure serrée peut causer de l'ombre ou de la
distorsion le long de la marge intérieure | <input type="checkbox"/> Only edition available/
Seule édition disponible |
| <input type="checkbox"/> Blank leaves added during restoration may
appear within the text. Whenever possible, these
have been omitted from filming/
Il se peut que certaines pages blanches ajoutées
lors d'une restauration apparaissent dans le texte,
mais, lorsque cela était possible, ces pages n'ont
pas été filmées. | <input type="checkbox"/> Pages wholly or partially obscured by errata
slips, tissues, etc., have been refilmed to
ensure the best possible image/
Les pages totalement ou partiellement
obscurcies par un feuillet d'errata, une pelure,
etc., ont été filmées à nouveau de façon à
obtenir la meilleure image possible. |
| <input checked="" type="checkbox"/> Additional comments:/ [Printed ephemera] [4] p.
Commentaires supplémentaires: | |

This item is filmed at the reduction ratio checked below/
Ce document est filmé au taux de réduction indiqué ci-dessous.

10X	12X	14X	16X	18X	20X	22X	24X	26X	28X	30X	32X
								✓			

The copy filmed here has been reproduced thanks to the generosity of:

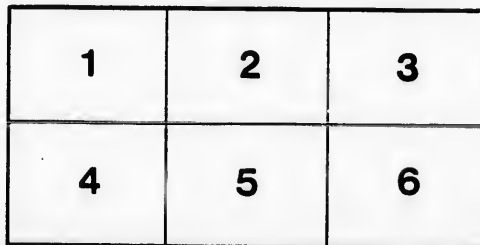
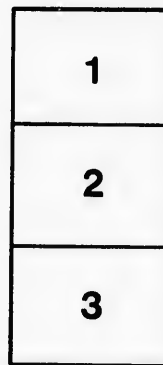
D. B. Weldon Library
University of Western Ontario
(Regional History Room)

The images appearing here are the best quality possible considering the condition and legibility of the original copy and in keeping with the filming contract specifications.

Original copies in printed paper covers are filmed beginning with the front cover and ending on the last page with a printed or illustrated impression, or the back cover when appropriate. All other original copies are filmed beginning on the first page with a printed or illustrated impression, and ending on the last page with a printed or illustrated impression.

The last recorded frame on each microfiche shall contain the symbol \rightarrow (meaning "CONTINUED"), or the symbol ∇ (meaning "END"), whichever applies.

Maps, plates, charts, etc., may be filmed at different reduction ratios. Those too large to be entirely included in one exposure are filmed beginning in the upper left hand corner, left to right and top to bottom, as many frames as required. The following diagrams illustrate the method:



L'exemplaire filmé fut reproduit grâce à la générosité de:

D. B. Weldon Library
University of Western Ontario
(Regional History Room)

Les images suivantes ont été reproduites avec le plus grand soin, compte tenu de la condition et de la netteté de l'exemplaire filmé, et en conformité avec les conditions du contrat de filmage.

Les exemplaires originaux dont la couverture en papier est imprimée sont filmés en commençant par le premier plat et en terminant soit par la dernière page qui comporte une empreinte d'impression ou d'illustration, soit par le second plat, selon le cas. Tous les autres exemplaires originaux sont filmés en commençant par la première page qui comporte une empreinte d'impression ou d'illustration et en terminant par la dernière page qui comporte une telle empreinte.

Un des symboles suivants apparaîtra sur la dernière image de chaque microfiche, selon le cas: le symbole \rightarrow signifie "A SUIVRE", le symbole ∇ signifie "FIN".

Les cartes, planches, tableaux, etc., peuvent être filmés à des taux de réduction différents. Lorsque le document est trop grand pour être reproduit en un seul cliché, il est filmé à partir de l'angle supérieur gauche, de gauche à droite, et de haut en bas, en prenant le nombre d'images nécessaire. Les diagrammes suivants illustrent la méthode.

LONDON PRINT & LITHO CO.

MICHIGAN, OHIO
CANADIAN CIRCUIT

EIGHTEEN
THEATRES

CLEVELAND, CINCINNATI, BUFFALO,
DETROIT, TORONTO,
TOLEDO, LONDON, HAMILTON,
WOODSTOCK, SAGINAW,
GRAND RAPIDS, BAY CITY AND
JACKSON.

Grand OPERA HOUSE London.

C. J. WHITNEY.
LESSEE.

A. E. ROOTE.
MANAGER

ONTARIO.



W. SMITH.

E. HOLLAND.

W. S. PARTRIDGE.

SMITH & BROS.

THE
LEADING
SANITARY
PLUMBERS
AND
HEATING
ENGINEERS
OF
WESTERN
ONTARIO.

376
RICHMOND STREET, LONDON.

OPPOSITE GRAND OPERA HOUSE BUILDING.

A full stock of Supplies always on hand.

TELEPHONE 532.

LADIES! THE ONLY WAY TO GET HELP IS THROUGH THE "FREE PRESS" WANT COLUMN.



**Parisian
Steam
Laundry**

73 & 75 DUNDAS STREET.

BRANCH OFFICES:

226 Dundas St. 752 Waterloo. 410 Hamilton Rd.
280 " " 572 Pall Mall. 251 Wellington.
310 " " 389 Richmond. 338 Ridout.
322 " " 435 " "

J. K. SPRY, Manager.

HUESTON'S

**LIVERY,
Goupe & Cab Stables**
WELLINGTON STREET.

Finest Horses and Carriages in the City.
OPEN DAY AND NIGHT. TELEPHONE 441.

ROBT. HUESTON,
Proprietor.

H. MCKENNA,
—FOR—

Choice Cigars, Tobaccos
AND PIPES.

ALWAYS OPEN
..... AFTER THE OPERA.

225 DUNDAS STREET.

RIVARD

The Leading Hatter
and Furrier

HAS THE FINEST STOCK OF

FURS

IN THE CITY TO SELECT FROM.

HIS PRICES ARE RIGHT!

Rivard

London's Fashionable Hatter
and Furrier,

400 RICHMOND-ST.

WILLIAMS' Pianos

CANADA'S FAVORITE

Cannot be excelled for touch, singing quality, delicacy and great power of tone, with highest excellence of workmanship.

ALL THE LATEST VOCAL AND INSTRUMENTAL

MUSIC RECEIVED AS PUBLISHED.

Musical Instruments of all kinds, Strings and Fittings
AT LOWEST PRICES.

R. S. WILLIAMS & SON, 171 DUNDAS STREET,
LONDON, ONT.

J. A. CRODEN, Manager.

Frank Jucker

PROGRAMME

Friday, Dec. 15th.

RANCH 10.

(Programme continued on next page.)

SOMETHING NEW.

Opera English & Canadian
Caramels. Chocolate Creams.

VERY FINEST French Crystalized FRUITS. Olives in Bulk.
.. Fresh Roquefort Cheese..

FITZGERALD, SCANDRETT & CO.
169 Dundas Street.

ESTABLISHED 1831.

**H. DAVIS & SON,
WATCHMAKERS**

JEWELLERS

DEALERS IN

Watches, Clocks, Jewellery, Spectacles,
Silver Plated Ware, &c.

170 DUNDAS ST., LONDON, ONT.

W. T. STRONG

Dispensing
Chemist,

184 Dundas Street,
LONDON, - ONTARIO.

BROWN'S

Central Shoe Store,
145 DUNDAS ST.

DON'T FAIL TO SEE... **Brown's Special Lines**

Ladies' Drawing-Room, Ball-Room,
Boudoir, Theatrical, Calisthenic,
Skating and Walking Shoes.
Overgaiters, Moccasins & Leggings.

INSPECT BROWN'S SPECIALS IN
Gents' Dress, Walking and Hockey Boots.
Latest New York and Chicago Tips.

Newest Designs in Patents, Royal Tip, Oil Tan,
Bluchers and Bals, with Scotch Welts,
and the Celebrated Dowe's Felt Insole.

OVERSHOES, SPATS AND RUBBERS
IN ENDLESS VARIETY.
A beautiful assortment of Fancy Slippers
for Christmas and New Years.

See our Windows . .
Inspect our Goods . .
Ascertain our Prices

And we are sure you will be agreeably
surprised.

John S. Brown,
TELEPHONE 881.

IF YOU WANT THE BEST, TAKE THE "FREE PRESS" ALL THE NEWS!

Dec 15/93

IF YOU SEE IT IN THE "LONDON FREE PRESS," IT IS SO!

—GO TO—
SOUTHCOTT'S
 —FOR YOUR—
Overcoating
 —OR—
FALL & SUITING
 AND GET SATISFACTION AT
 CLOSE PRICES.
361 RICHMOND STREET.

GRAHAM BROS
 FOR
Fall and Winter Underclothing
 ALL SIZES AND WEIGHTS.
CHEAPEST STOCK IN THE CITY.
159 DUNDAS STREET.

Wm. Stevely & Son,
 —THE LEADING DEALERS IN—
STOVES, RANGES,
 .. AND ..
HOUSE FURNISHING GOODS.
 OUR STOCK IS THE LARGEST.
 OUR PRICES THE LOWEST.
362 RICHMOND STREET.
 'PHONE 462.

I-I-I-I-I-I-I-I-I-I

PRINTERS
 LITHOGRAPHERS
 ENGRAVERS

The
London
Printing and
Lithographing
Co'y, SUCCESSIONS TO FREE PRESS
 PRINTING AND LITHO.
 DEPARTMENTS.

OFFICE,
 "FREE PRESS"
 BUILDING.

BEST WORK
 AT MODERATE
 PRICES.

I-I-I-I-I-I-I-I-I-I

TECUMSEH HOUSE

LONDON.



Directly opposite G.T.R. depot;
 street railway past the doors;
 convenient to all the wholesale
 and retail business houses of
 city, making it the most desir-
 able hotel in the city; elevator,
 and heated throughout with
 steam.

Porter in attendance on
 arrival of all trains.

RATES, \$2.00 AND \$2.50
 PER DAY,

ACCORDING TO LOCATION.

No Extra Charge For Baggage.

C. W. DAVIS, PROP.

«Programme Continued.»

CAST OF CHARACTERS.

Al. McClelland } Frank Tucker
 Tom McClelland }
 Joe Kebuck.....C. W. Porter
 The Judge.....J. Knox Gavin
 The Doctor.....C. P. Coast
 The Lawyer.....B. W. Richardson
 The Parson.....A. M. Hunt
 Anna Smalley.....Minnie Wilson
 Silver Bud.....Alice Mason
 Neely Barret.....Gertie Claire
 Coriander Lucretia Smalley.....Ethel Tucker

SYNOPSIS.

ACT I.—Ranch 10. The Murder.
 ACT II.—Prison Corral. The Explosion.
 Tom to the Rescue.
 ACT III.—The Marriage in the Mountains.
 Death of Al. To Avenge the Double Murder.
 ACT IV.—The Cheyenne Court. Tried and
 Acquitted. The Story. Kebuck to die with his
 boots on.

(Programme continued on last page.)

McLEAN'S HARDWARE

—FOR—

Bissell's Carpet Sweepers.

WE CAN SHOW YOU TWELVE DIFFERENT STYLES SAME
 AS ARE NOW DISPLAYED BY THE BISSELL COM-
 PANY AT THE WORLD'S FAIR.

CALL AND SEE THESE GOODS

—AT—

McLEAN'S HARDWARE,
151 Dundas Street.

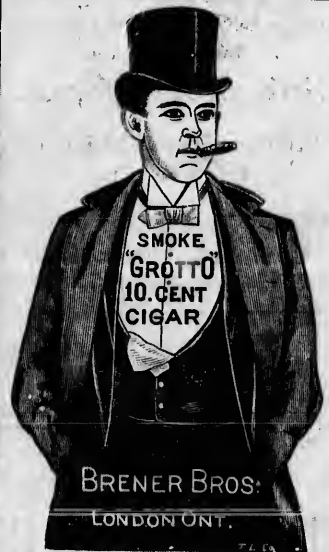
W. T. STRONG,
Dispensing
Chemist,
184 DUNDAS ST.,
LONDON, ONT.

—FOR—

Fine Etchings....
 —AND—
Engravings

—TRY—

O. B. GRAVES,
 222 DUNDAS STREET.



BRENER BROS.
 LONDON ONT.

SOLD BY ALL
FIRST-CLASS DEALERS.

LOOK OUT FOR THE "LONDON FREE PRESS" ON ALL EARLY MORNING TRAINS.

GLOVES
— IN —
SILK & KID
— IN —
18 to 30 Inch,
IN ALL THE NEW SHADES.

OPERA
FANS

EVENING GOODS

A. Rolfe

OPERA
HOSE

We show the largest
range of
S.I.L.K.S
IN THE CITY.
OUR **Velour Cloth**
NEW
IS THE LATEST.
In all the New Tints,
With Trimming to Match.
FINE DRESSMAKING.

TELEPHONE 611.

202 DUNDAS STREET.

EDY BROS.

The Artistic Photographers,
— RECEIVED —

Three First Prizes

— AND —
DIPLOMA

For Finest Display of Photography
AT WESTERN FAIR, 1893.

Cabinet Photos, \$3 per doz.

EDY BROS.,
214 DUNDAS STREET.

The **HUB**
Restaurant,
203 & 205 DUNDAS STREET.

For a NICE LUNCH after the
Opera, go to the
Hub Restaurant.

Steaks, Chops, Chicken,
Oysters, Etc.
OPEN TILL 12.00 P.M.
J. W. MARTIN, Prop.
(Late of the Martin House)

« Programme Concluded. »

During the evening, incidental to the performance, the **CHALLENGE ORCHESTRA** will render the following selections:—

- MARCH—"High School Cadets,"..... Sousa
- WALTZ—"Day Dreams,"..... Brooks
- OVERTURE—"Lucrezia Borgia,"..... Donizetti
- DESCRIPTIVE—"Mill in the Forest,"..... Eilenberg

The Furniture used on stage is supplied by **JOHN FERGUSON & SON,**
Furniture Manufacturers.

NEXT ATTRACTION

MATINEE TO-MORROW, 2.30.

A False Marriage.

To-morrow (Sat.) Night.

Ten Nights in a Bar Room.

A FINE PERFORMANCE

is a satisfactory return for your money, but when you can get from us a superior quality of Coal or Wood at the same price you would pay for an inferior quality, it is even more satisfactory. When in need of "warmth," try us.

CAMERON'S

421 RICHMOND STREET,
and BURWELL STREET at G. T. R.

WE call the attention of our business men to the PROGRAM as an advertising medium. It reaches the class of people whose trade you want, and the way to get that trade is to make yourself known.

BELTON & ROOTE,

BILL POSTING,
DISTRIBUTING
...AND...

GENERAL ADVERTISING AGENTS

Control all the Bill Boards and Dead Walls throughout the City. Population of City, 40,000.

All orders for Bill Posting, Distributing, Card Tacking, and General Advertising for Western Ontario will receive prompt attention.

OFFICE: BOX OFFICE, OPERA HOUSE.

Roses, Carnations,
Palms,
Ferns, Bulbs,

J. GAMMAGE & SONS,
213 Dundas Street.

INDIAN... CEYLON TEA IMPORTING HOUSE.

NEW BLENDS, DELICIOUS AND ECONOMICAL, AT MODERATE PRICES.

"English Breakfast," "Five o'clock Tea," & "Club House" Blends.
60c. 50c. 45c.

These Blends are standard selections of choice Teas. Highly recommended to families for their fine quality and economical properties.

S. FUGE, — IMPORTER OF —
CHOICE TEAS 436 Richmond St.
TELEPHONE 858. LONDON.

