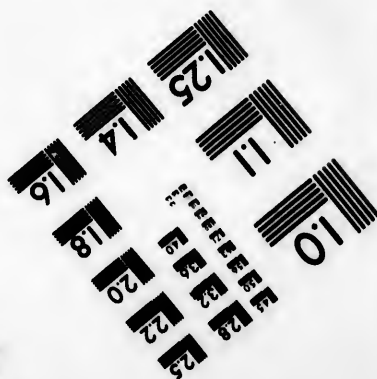
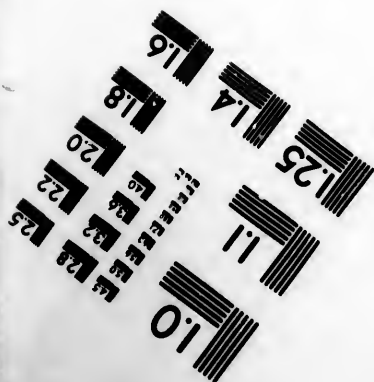
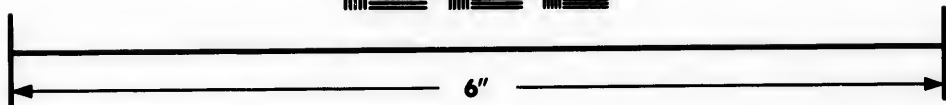
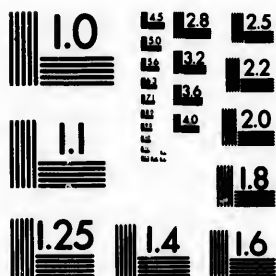


**IMAGE EVALUATION
TEST TARGET (MT-3)**



**Photographic
Sciences
Corporation**

23 WEST MAIN STREET
WEBSTER, N.Y. 14580
(716) 872-4503

14
12
13
15
18
20
22
25

**CIHM/ICMH
Microfiche
Series.**

**CIHM/ICMH
Collection de
microfiches.**



Canadian Institute for Historical Microreproductions / Institut canadien de microreproductions historiques

10
11
12
13
14
15

© 1981

Technical and Bibliographic Notes/Notes techniques et bibliographiques

The Institute has attempted to obtain the best original copy available for filming. Features of this copy which may be bibliographically unique, which may alter any of the images in the reproduction, or which may significantly change the usual method of filming, are checked below.

L'Institut a microfilmé le meilleur exemplaire qu'il lui a été possible de se procurer. Les détails de cet exemplaire qui sont peut-être uniques du point de vue bibliographique, qui peuvent modifier une image reproduite, ou qui peuvent exiger une modification dans la méthode normale de filmage sont indiqués ci-dessous.

- Coloured covers/
Couverture de couleur
- Covers damaged/
Couverture endommagée
- Covers restored and/or laminated/
Couverture restaurée et/ou pelliculée
- Cover title missing/
Le titre de couverture manque
- Coloured maps/
Cartes géographiques en couleur
- Coloured ink (i.e. other than blue or black)/
Encre de couleur (i.e. autre que bleue ou noire)
- Coloured plates and/or illustrations/
Planches et/ou illustrations en couleur
- Bound with other material/
Relié avec d'autres documents
- Tight binding may cause shadows or distortion
along interior margin/
La reliure serrée peut causer de l'ombre ou de la
distortion le long de la marge intérieure
- Blank leaves added during restoration may
appear within the text. Whenever possible, these
have been omitted from filming/
Il se peut que certaines pages blanches ajoutées
lors d'une restauration apparaissent dans le texte,
mais, lorsque cela était possible, ces pages n'ont
pas été filmées.
- Additional comments:/
Commentaires supplémentaires:

- Coloured pages/
Pages de couleur
- Pages damaged/
Pages endommagées
- Pages restored and/or laminated/
Pages restaurées et/ou pelliculées
- Pages discoloured, stained or foxed/
Pages décolorées, tachetées ou piquées
- Pages detached/
Pages détachées
- Showthrough/
Transparence
- Quality of print varies/
Qualité inégale de l'impression
- Includes supplementary material/
Comprend du matériel supplémentaire
- Only edition available/
Seule édition disponible
- Pages wholly or partially obscured by errata
slips, tissues, etc., have been refilmed to
ensure the best possible image/
Les pages totalement ou partiellement
obscurcies par un feuillet d'errata, une pelure,
etc., ont été filmées à nouveau de façon à
obtenir la meilleure image possible.

This item is filmed at the reduction ratio checked below/
Ce document est filmé au taux de réduction indiqué ci-dessous.

10X	12X	14X	16X	18X	20X	22X	24X	26X	28X	30X	32X
					✓						

The copy filmed here has been reproduced thanks to the generosity of:

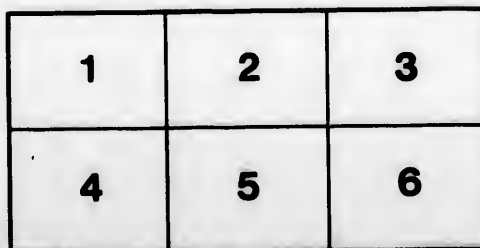
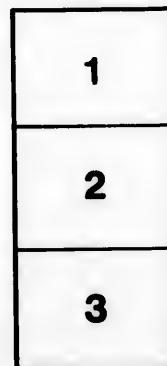
Library,
National Museums of Canada

The images appearing here are the best quality possible considering the condition and legibility of the original copy and in keeping with the filming contract specifications.

Original copies in printed paper covers are filmed beginning with the front cover and ending on the last page with a printed or illustrated impression, or the back cover when appropriate. All other original copies are filmed beginning on the first page with a printed or illustrated impression, and ending on the last page with a printed or illustrated impression.

The last recorded frame on each microfiche shall contain the symbol \rightarrow (meaning "CONTINUED"), or the symbol ∇ (meaning "END"), whichever applies.

Maps, plates, charts, etc., may be filmed at different reduction ratios. Those too large to be entirely included in one exposure are filmed beginning in the upper left hand corner, left to right and top to bottom, as many frames as required. The following diagrams illustrate the method:



L'exemplaire filmé fut reproduit grâce à la générosité de:

Bibliothèque
Musées Nationaux du Canada

Les images suivantes ont été reproduites avec le plus grand soin, compte tenu de la condition et de la netteté de l'exemplaire filmé, et en conformité avec les conditions du contrat de filmage.

Les exemplaires originaux dont la couverture en papier est imprimée sont filmés en commençant par le premier plat et en terminant soit par la dernière page qui comporte une empreinte d'impression ou d'illustration, soit par le second plat, selon le cas. Tous les autres exemplaires originaux sont filmés en commençant par la première page qui comporte une empreinte d'impression ou d'illustration et en terminant par la dernière page qui comporte une telle empreinte.

Un des symboles suivants apparaîtra sur la dernière image de chaque microfiche, selon le cas: le symbole \rightarrow signifie "A SUIVRE", le symbole ∇ signifie "FIN".

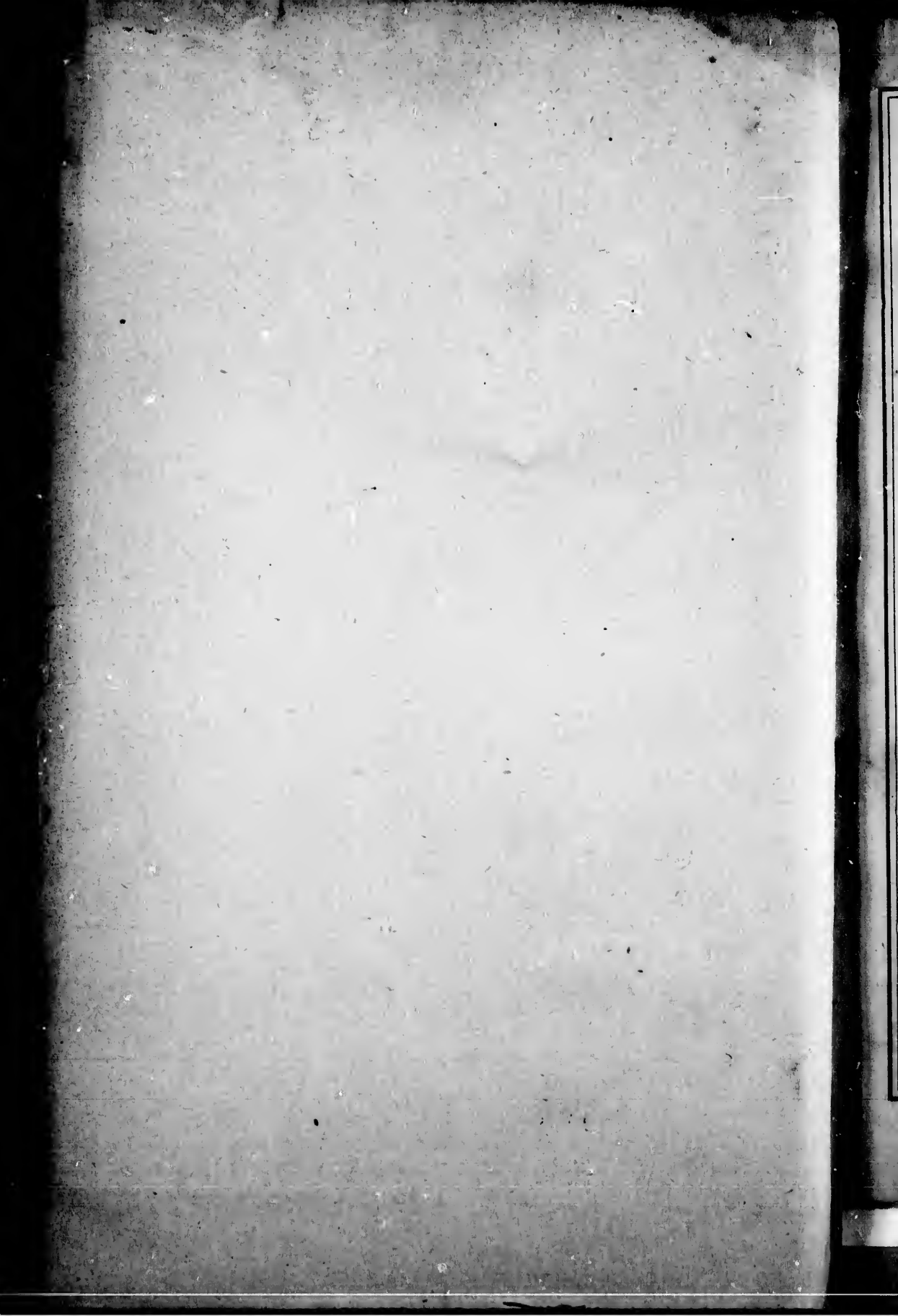
Les cartes, planches, tableaux, etc., peuvent être filmés à des taux de réduction différents. Lorsque le document est trop grand pour être reproduit en un seul cliché, il est filmé à partir de l'angle supérieur gauche, de gauche à droite, et de haut en bas, en prenant le nombre d'images nécessaire. Les diagrammes suivants illustrent la méthode.

ails
du
odifier
une
nage

rrata
o

pelure,
n à

32X



T

CHECK LIST
OF
INSECTS
OF THE
DOMINION OF CANADA.



COMPILED BY THE
NATURAL HISTORY SOCIETY OF TORONTO.

PRICE, ONE DOLLAR.

JULY, 1883.

TORONTO:
PRINTED BY C. BLACKETT ROBINSON, 5 JORDAN STREET.
1883.

LIBRARY
0064.5 NATIONAL MUSEUM
OF CANADA

WASALI
WAVAO JACOBO
WAVAO TO

CHECK LIST
OF
INSECTS
OF THE
DOMINION OF CANADA.



COMPILED BY THE
NATURAL HISTORY SOCIETY OF TORONTO.

PRICE, ONE DOLLAR.

JULY, 1883.

TORONTO:
PRINTED BY C. BLACKETT ROBINSON, 5 JORDAN STREET.
1883.

In
have be
logical S
Exchan

Th
able to
Orders,
impede
well as
earlier
standin
history
shows,
here.
printin

In
followe

In
in con
which

I
in the
Canad
with
it is

P R E F A C E.

In the preparation of this as well as the Label List, the compilers have been actuated by two motives, the registering of the Entomological Status of Canada to this date, and the furnishing of a reliable Exchange List for the convenience of students and collectors.

The great difficulties experienced by Entomologists in not being able to provide themselves with a compact Check List of the several Orders, containing the species recognized in Canada, have materially impeded the progress and pleasure of Entomological research, as well as proved a serious and sometimes effectual impediment to the earlier efforts of students in our Schools and Colleges. Notwithstanding this, it must be a subject of congratulation to natural history scientists to know that such evident progress, as this List shows, has been made since any former publication of this kind here. The usual sequence of the Orders, through an oversight in printing, has not been followed.

In the Coleoptera, Crotch's list, revised by Austin, has been followed, though we have in this, many species not found in it.

In the Hymenoptera, a new departure in the Label List published in connection with this, is the introduction of the "Gender Signs," which students of this Order will appreciate.

In the Lepidoptera, W. H. Edwards in the Diurnes, and Grote in the Nocturnes, have been followed; so little has been done in Canada in the Tineidæ, that they have been omitted. This family, with the Orders Hemiptera and Diptera, are much neglected, and it is to be hoped some specialists will take them up and greatly

enlarge the present list. It is with pleasure we learn that M. L'Abbé Provancher has undertaken a descriptive catalogue of the Hemiptera of Canada.

It is intended, from time to time, to issue supplements to this List, and we will be glad to receive contributions from collectors in all parts of the Dominion for that purpose.

Our thanks are due to the many gentlemen who have contributed their local lists to the completion of this work, among whom particular mention must be made of Prof. Bell, Belleville; M. L'Abbé Provancher, Cape Rouge, Quebec; J. A. Moffat, Hamilton; J. D. Evans, Belleville; Mr. W. Taylor, Vancouver's Island; Mr. Couper, and Mr. Lyman, Montreal; Mr. E. T. Seton, Carberry, Man., and Mr. W. G. A. Brodie, Pelly, N.W.T.

W. BRODIE, L.D.S.

J. E. WHITE, M.B.

TORONTO, July, 1883.

N.B.—Copies of this or the Label List may be obtained by application to the Secretary, Natural History Society, Canadian Institute, Toronto.

HYMENOPTERA.

APIDÆ.

Apis.
Mellifica B Drury.

Mellifica Cyp Drury.
Mellifica Syr Drury.

Mellifica Ita Drury.

HYBRIDS.

A. Mellifica.
Hyb, B + Cyp Drury.

Hyb, B + Ita Drury.
Hyb, B + Syr Drury.

Hyb. Syr Ita Drury.
Hyb. Cyp Ita Drury.

BOMBUS.

Bombus.
flavifrons Cress.
praticola Kirby.
Vancouverensis Cress.
Kirbiellus Curtis.
Ridingsii Cress.
affinis Cress.
Oregonensis Cress.
moderatus Cress.
Edwardsii Cress.
Couperi Cress.
frigidus Cress.
sternus Cress.

bifarius Cress.
consimilis Cress.
fervidus Fab.
terricola Kirby.
ternerius Say.
Virginicus Linn.
borealis Kirb.
Pennsylvanicus De-Geer.
separatus Cress.
vagans Smith.
perplexus Cress.

flavifrons Cress.
sylvicola Kirb.
occidentalis Greene.
centralis Cress.
lacustris Cress.

Apathus.
laboriosus Fab.
Ashtoni Cress.
elatus Fab
citrinus Smith.
insularis Cress.

ANDRENIDÆ.

Anthophora.
terminalis Cress.
bomboides Kirby.
Canadensis Cress.
abrupta Say.

Melissodes.
aurigena Cress
dentiventris Smith.
deoponsa Smith.
rustica Say.
Pennsylvanicus St. Farg.
obliqua Say.

Eucera.
lucida Prov.

Andrena.
bicolor Fab.
hilaris Smith.
nivalis Smith.
frigida Smith.
vicina Smith.
hirticeps Smith.
placida Smith.
algida Smith.
perplexa Smith.
integra Smith.

simplex Smith.
miserabilis Cress.

Halictus.
coriaceus Smith.
ligatus Say.
distinctus Prov.
6-cinctus Prov.
scabrosus Prov.
discus Smith.
pilosus Smith.
levissimus Smith.
albitarsis Cress.
parallelus Say.

constrictus Prov.
confusus Smith
Ontariensis Prov.

Colletes.
thoracica Smith.

Agapostemon.
tricolor Lepell.
radiatus Say.

Panurgus.
vernalis Prov.
estivalis Prov.
8-maculatus Say.

Augochlora.
radiata Say.
pura Say.

Osmia.
albiventris Cress.
lignaria Say.
simillima Smith.
lignicola Prov.
albitarsis Cress.
bucconis Say.
texana Cress.
frigida Smith.
lignivora Pack.
atriventris Cress.
Canadensis Cress.
parva Prov.
bucephala Cress.
faceta Cress.
globosa Cress.
Hudsonica Cress.
cognata Cress.

proxima Cress.
vicina Cress.

Megachile.
latimanus Cress.
frigida Smith.
scorbiculata Smith.
femorata Say.
pugnata Say.
simplex Prov.
brevis Say.
grandis Cress.
oblonga Prov.
centuncularis St.
Farg.
mendica Cress.
optiva Cress.
melanophæa Smith.
bucephala Smith.

Acidamea.
producta Cress.

Gnathocera.
cephalica Prov.

Monumetha.
borealis Cress.

Heriades.
carinatum Cress.
conceavum Cress.

Ceratina.
bidentata Prov.
dupla Say.
Tejonensis Cress.

Epeolus.
mercatus Fab.
donatus Harr.

Phileremus.
Americanus Cress.

Nomada.
Americana Kirb.
bisignata Say.
maculata Cress.
luteola St. Farg.
punctata Fabr.

Calliopsis.
4-lineata Prov.
flavipes Smith.
interrupta Prov.

Stelis.
nitida Cress.

Cœlioxys.
rustitarsis Smith.
mœsta Cress.
tristis Cress.
dubitata Sausse.
8-dentata Say.

Sphecodes.
dichora Smith.
mandibulans Cress.

Prosopis.
basilis Smith.
affinis Smith.

VESPIDÆ.

Vespa.
maculata Fab.
consobrina Sausse.
germanica Fabr.
diabolica Sausse.

media Oliv.
rufa Linn.
vulgaris Linn.
arenaria Fab.

Polistes.
pallipes Lepell.
fraterna.

EUMENIDÆ.

Odynerus.
Walshianus Sausse.
Canadensis Sausse.
blandus Sausse.
debilis Sausse.
capra Sausse.
tigris Sausse.

albophaleratus Sausse.
campestris Sausse.
arvensis Sausse.
leucomelas Sausse.
Pennsylvanicus
Sausse.

unifasciatus Sausse.

Eumenes.
fraterna Say.
globulosus Sausse.

CRABRONIDÆ.

Philanthus.
solivagus Say.
frigidus Smith.
bilanatus Cress.
politus Say.
punctatus Say.

Eucerceris.
zonatus Say.

Cerceris.
nigrescens Smith.
olypeata Duh.
deserta Say.

Cemonus.
inornatus Say.

Pemphredon.
concolor Say.

Mimesa.
paupera Pack.
argentifrons Cress.
denticulata Pack.

Psen.
leucopus Say.
niger Pack.

Stigmus.
fraternus Say.

Passalæcus.
mandibularis Cress.

Oxybelus.
Brodiei Prov.
4-notatus Say.
marginatus Prov.

Crabro.
interruptus St. Farg.
4-maculatus Prov.
stirpicola Pack.
6-maculatus Say.
trifasciatus Say.
villosifrons Pack.
rufifemur Pack.
nigrifrons Cress.
singularis Pack.
aciculatus Prov.
subiceps Pack.

denticulatus Pack.
effosus Pack.
pauper Pack.
confluentus Say.
orbiflorus Pack.

Thyreopus.
monticola Pack.
latipes Smith.
pegasus Pack.
rugosa-punctatus Prov.

Elepharipus.
maculipennis Fabr.
ater Cress.
cinctipes Prov.
minimus Pack.

Rhopalum.
pedicellatum Pack.
rufigaster Pack.

Trypoxylon.
olavatum Say.
politum Say.
subrocinatum Pack.

NYSSONIDÆ.

Paranysson.
texanus Cress.
fuscipes Cress.

Nysson.
laterale Say.
plagiatus Cress.
compactus Cress.
mellipes Cress.

bellus Cress.
fidolis Cress.
rufiventris Cress.

Hyponysson.
bicolor Cress.

Alyson.
oppositus Say.

Gorytes.
ephippiatus Pack.
atricornis Pack.
phaleratus Say.
clitellarius Prov.
phobiatius Cress.
laticinctus Prov.

LARRIDÆ.

Astata.
unicolor Say.

Tachytes.
angustatus Fab.

Lyroda.
triloba Say.
subita Say.

Larra.
Quebecensis Prov.
terminata Smith.
abdominalis Say.
unicincta Say.

BEMBECIDÆ.

Bembex.
fasciata Fab.

monodonta Fab.

Monedula.
ventralis Say.

POMPILIDÆ.

Pompilus.
æthiops Cress.
scolestus Cress.
luctuosus Cress.
griseus Prov.
Philadelphicus Cress.
hyacinthinus Cress.
Virginianus Cress.
apicatus Prov.
angustatus Cress.
maurus Cress.
tenebrosus Cress.
cylindricus Cress.

castaneus Prov.
biguttatus Fab.
marginatus Say.
tropicus Linn.
ferrugineus Say.

mellipes Say.
perfecta Prov.
architectus Say.
petiolata Cress.
fulvipes Cress.

Priocnemis.
conicus Say.
germanus Say.
alienatus Smith.

Ceropales.
fraterna Smith.
superba Prov.
bipunctatus Say.
longipes Smith.

Agenia.
pulohripennis Cress.

SPHEGIDÆ.

Sphex.
johnsumonea Linn.
Philadelphica St.
Farg.
apicalis Harr.
dichrosa Harr.
elegans Smith.

Priononyx.
atrata Fab.

Ammophila.
luctuosa Smith.
communis Cress.
gracilis St. Farg.
gryphus Smith.
conditor Smith.

Pelopæus.
cementarius Drury.
cæruleus Linn.
Canadensis Say.

SCOLIADIDÆ.

Scolia.
unicincta Prov.

Ischiocerus.
rugosa Prov.

Sapyga.
maculata Prov.
Americana Cress.

Tiphia.
mornata Say.

MUTILLIDÆ.

Mutilla.
ornaventris Say.

Methoca.
bicolor Say.

FORMICIDÆ.

Formica.
herculena Linn.
Pennsylvanica De-
Geer.
pallitarsis Prov.

melles Prov.
rufa Linn.
flava Fab.
fuscata Linn.

Myrmica.
incompleta Prov.
tuberosa Fab.
molesta Say.
lineolata Say.

CHRYSIDÆ.

Chrysis.
cærulea Lepell.
aurichalcea Prov.
purpuriventris Cress.
tridens Sep.

Hedychrum.
violaceum Lepell.

purpureascens Prov.
viridis Cress.
marginatus Prov.

Elampus.
spinosus Prov.
coruscans Nort.
cyanescens Prov.

Cleptes.
Americana Latr.

CHALCIDÆ.

Chalcis.
ovata Say.
mariae Riley.

Leucopsis.
affinis Say.

Eurytoma.
studiosa Say.

Smiera.
Canadensis Cress.
delumbis Cress.

Decatoma.
basilaris Prov.

Monodontomerus.
viridæneus Prov.

Galesus.
Quebecensis Prov.

Basalys.
ruficornis Prov.

Aneuryncus.
spinus Prov.

Cynips.
aciculata O. Sack.
gibbosa Prov.
crassitelus Prov.
quereus fusiformis O.
 Sack.

Rhodites.
rosæ Linn.

Diastrophus.
nebulosus O. Sack.
5-costatus Prov.

Bracon.
lævis Prov.
inquisitor Prov.
simplex Cress.
dissitus Cress.

Callimone.
splendidus Walk.
fagopyrum Prov.
longicauda Prov.
cecidomyiæ Walk.
Duckeri Brodie.

Eucharis.
gibbosa Prov.

Theocolax.
Canadensis Prov.

Perilampus.
triangularis Say.
hyalinus Say.
platygaster Say.

PROCTOTRUPIDÆ.

Spilomierus.
longicornis Prov.

Proctotrupes.
rufigaster Prov.
abruptus Say.

CYNIPIDÆ.

Aulax.
sylvestris O. Sack.

Synergus.
rhoditiformis Walsh.

Eucolia.
subcompressa Prov.

Kleidotoma.
maculipennis Prov.
cupulifera Prov.

BRACONIDÆ.

aciculatus Cress.
striatus Prov.
ventralis Cress.
obliquus Prov.
ornatus Prov.

Paphagus.
rugosa Prov.

Semiotellus.
fasciatus Prov.
melanicornis Prov.
fuscipes Prov.
oblongus Prov.
cupræus Prov.
minimus Prov.
scorbicularis Prov.

Pteromalus.
peridis Prov.
acutus Prov.
nigricornis Prov.

Eulophus.
ramosus Prov.

flavipes Prov.

Bethylus.
prolongatus Prov.

Megalispus.
lucens Prov.

Ibalia.
ensiger Nort.

Ægilips.
aciculatus Prov.

Figites.
armatus Say.
5-lineatus Say.

Allotria.
polita Prov.

æqualis Prov.
longicaudatus Prov.
rufovariegatus Prov.
lutus Prov.
nigropectus Prov.

- apicatus* Prov.
nanus Prov.
pygmaeus Prov.
- Rogas.**
terminalis Cress.
abdominalis Cress.
Quebecensis Prov.
Sanoti-Hyacinthi Pro.
Canadensis Cress.
intermedius Cress.
- Syngaster.**
cingulatus Prov.
bæticatus Prov.
fartus Prov.
macilentus Prov.
- Spathius.**
Lafiammei Prov.
- Opius.**
pallipes Prov.
- Perilitus.**
dimidiatus Cress.
vulgaris Cress.
communis Cress.
humilis Cress.
- Gamosecus.**
virgilax Prov.
mellinus Prov.
- Helcon.**
pedalis Cress.
frigidus Cress.
albitarsis Cress.
borealis Cress.
occidentalis Cress.
Americanus Cress.
- Ichneumon.**
saucius Cress.
viola Cress.
malacus Say.
cincticornis Cress.
galenus Cress.
centrator Say.
flavicornis Cress.
acerbus Cress.
cæruleus Cress.
navus Say.
citus Prov.
subcyanus Cress.
- Eubadizon.**
pleuralis Cress.
Americanus Cress.
submucronatus Prov.
gracilis Prov.
- Macrocentrus.**
mellipes Prov.
longicornis Prov.
uniformis Cress.
pectoralis Prov.
delicatus Cress.
- Phylax.**
pacificus Prov.
niger Prov.
palliventris Prov.
rufipes Prov.
cinctus Prov.
- Platysoma.**
tibialis Prov.
- Agathis.**
liberator Boisc.
quæstor Prov.
perforator Prov.
femorata Prov.
tibiator Prov.
meabilis Cress.
- Microdus.**
Quebecensis Prov.
laticinctus Cress.
annulipes Cress.
agilis Cress.
bicolor Prov.
imitatus Cress.
- Earinus.**
limitaris Say.
- Microgaster.**
callipterus Say.
xylinus Say.
congregatus Say.
carpatus Say.
ensiger Say.
cinctus Prov.
clavatus Prov.
- Sigalphus.**
Canadensis Prov.
- Chelonus.**
insularis Cress.
basicinctus Prov.
sericeus Say.
iridescens Cress.
fissus Prov.
carinatus Prov.
nanus Prov.
- Phanerotoma.**
fasciata Prov.
- Rhitigaster.**
Quebecensis Prov.
- Alysia.**
caudata Prov.
lucens Prov.
nigriceps Prov.
- Trichesia.**
auripes Prov.
- Aphidius.**
Canadensis Prov.
- Arotropus.**
binodosus Prov.
- Copelus.**
paradoxus Prov.
- similaris** Prov.
puerilis Cress.
helvipes Cress.
albomarginatus Cress.
feralis Cress.
comes Cress.
trizonatus Prov.
lætus Brulle.
mimicus Cress.
vescus Prov.
pomilius Prov.
flavizonatus Cress.
comptus Say.

ICHNEUMONIDÆ.

HYMENOPTERA.

7

subdolos *Cress.*
 jucundus *Brulle.*
 creperus *Cress.*
 paratus *Say.*
 milous *Cress.*
 finitimus *Cress.*
 cervulus *Prov.*
 lachrymans *Prov.*
 nigrovariegatus *Prov.*
 humilis *Prov.*
 caudatus *Prov.*
 instabilis *Cress.*
 subrufus *Cress.*
 calignosus *Cress.*
 suturalis *Say.*
 grandis *Brulle.*
 consimilis *Cress.*
 rufiventris *Brulle.*
 placidus *Prov.*
 devinctor *Say.*
 lividulus *Prov.*
 insolens *Cress.*
 Canadensis *Cress.*
 velox *Cress.*
 seminiger *Cress.*
 volens *Cress.*
 mucronatus *Prov.*
 proximus *Prov.*
 funestus *Cress.*
 W.-album *Cress.*
 duplicatus *Say.*
 annulatus *Prov.*
 scitulus *Cress.*
 balteatus *Cress.*
 corvinus *Cress.*
 pepticus *Cress.*
 suadus *Cress.*
 versabilis *Cress.*
 municus *Cress.*
 inconstans *Cress.*
 ustus *Prov.*

nigripes *Prov.*
 paradoxus *Prov.*
 annulipes *Cress.*
 rubicundus *Cress.*
 nanus *Cress.*
 sorer *Cress.*
 sequax *Cress.*
 longulus *Cress.*
 cestus *Cress.*
 variatus *Cress.*
 vancouverensis *Prov.*

Hoplismenus.
 morulus *Say.*
 scutellatus *Prov.*
 impar *Prov.*

Amblyteles.
 excultus *Cress.*
 tetricus *Prov.*
 perluctuosus *Prov.*
 improvisus *Cress.*
 ultus *Cress.*
 Stadaconensis *Prov.*
 ormenus *Cress.*
 Belangeri *Cress.*
 luctus *Cress.*
 bifasciatus *Prov.*
 robustus *Cress.*
 rufozonatus *Cress.*
 expunctus *Cress.*
 montanus *Cress.*
 marginatus *Prov.*
 borealis *Prov.*
 Nortoni *Cress.*
 electus *Cress.*
 detritus *Brulle.*
 indistinctus *Prov.*
 semicæruleus *Cress.*

nubivagus *Cress.*
 subrufus *Cress.*
 anceps *Cress.*
 suturalis *Say.*

Ceratosoma.
 fasciata *Cress.*

Trogus.
 fulvipes *Cress.*
 exosorius *Serr.*
 Brullei *Cress.*
 Quebecensis *Prov.*
 Canadensis *Prov.*
 obsidinator *Brulle.*
 Copei *Cress.*

Platilabus.
 scutellatus *Prov.*
 signatus *Prov.*
 oratus *Prov.*
 thoracicus *Cress.*
 4-carinatus *Prov.*
 lineolatus *Prov.*
 Rubi-Capensis *Prov.*

Phæogenus.
 hebrus *Cress.*
 tuberculifrons *Prov.*
 mellinus *Prov.*
 helvus *Cress.*
 pyriformis *Prov.*
 atterimus *Prov.*
 nigricornis *Prov.*
 Gaspesianus *Prov.*
 tuberculifer *Prov.*
 Falardeani *Prov.*
 orbis *Prov.*
 quadriceps *Cress.*

CRYPTIDÆ.

Stilpnus.
 Canadensis *Prov.*
 Americanus *Cress.*

Phygadeuon.
 Blakei *Cress.*
 maculatus *Prov.*
 signatus *Prov.*
 maturus *Prov.*
 rectus *Prov.*
 inhabilis *Prov.*
 rubrocinctus *Prov.*
 alacris *Cress.*
 occidentalis *Prov.*
 subfusens *Cress.*
 nitidulus *Prov.*
 ovalis *Prov.*
 segnis *Prov.*
 impræsus *Prov.*

lucens *Prov.*
 pubescens *Prov.*
 albicoxus *Prov.*
 caudatus *Prov.*
 abdominalis *Prov.*
 mucronatus *Prov.*
 major *Cress.*
 crassipes *Prov.*
 rotundiceps *Prov.*
 inflatus *Prov.*
 ruficornis *Prov.*
 pallicoxus *Prov.*
 robustus *Prov.*
 planus *Prov.*
 rufulus *Prov.*
 maculatus *Prov.*
 Lavolei *Prov.*
 vulgaris *Cress.*
 orbitalis *Prov.*

cephalicus *Prov.*
 parallelus *Prov.*
 3-annulatus *Prov.*
 Mignaulti *Prov.*
 aciculatus *Prov.*
 Lechevallieri *Prov.*
 cornutus *Prov.*
 autumnalis *Prov.*
 subspinosus *Prov.*
 constrictus *Prov.*
 rubricus *Prov.*
 alternatus *Prov.*
 acaudus *Prov.*
 attenuatus *Prov.*

Hemiteles.
 mandibularis *Prov.*
 scabrosus *Prov.*
 parvus *Prov.*

caudatus *Prov.*
 ruficoxus *Prov.*
 ovalis *Prov.*
 semirufus *Prov.*
 tener *Prov.*
 orbicularis *Prov.*
 subspinosus *Prov.*
 humeralis *Prov.*
 sessilis *Prov.*
 depressus *Prov.*
 nigricans *Prov.*
 pallipennis *Prov.*
 crassus *Prov.*
 longicornis *Prov.*

Cryptus.
 proximus *Cress.*
 velox *Cress.*
 osculatus *Prov.*
 circumcinctus *Prov.*
 eburneifrons *Prov.*
 scutellatus *Prov.*
 exilis *Prov.*

Ophion.
 macrurum *Linn.*
 purgatus *Say.*
 bilineatus *Say.*
 bifoveolatus *Brulle.*
 nigrovarius *Prov.*

Thyreodon.
 morio *Fab.*

Trachynotus.
 Canadensis *Prov.*

Exochilum.
 mundum *Say.*
 fuscipenne *Nort.*

Heteropelma.
 flavicorne *Bulle.*

Anomalum.
 nigrum *Prov.*
 hyaline *Mort.*
 relictum *Fab.*
 anale *Say.*
 prismaticum *Nort.*
 exile *Prov.*
 curtum *Linn.*

Opheletes.
 glaucopterus *Linn.*

Paniscus.
 germinatus *Say.*
 albovariegatus *Prov.*
 albotarsatus *Prov.*

contiguus *Cress.*
 flavipectus *Prov.*
 americanus *Cress.*
 limatus *Cress.*
 rufoannulatus *Prov.*
 persimilis *Cress.*
 mundus *Prov.*
 apicatus *Prov.*
 cinctus *Prov.*
 Canadensis *Prov.*
 fungor *Nort.*
 ruficornis *Prov.*
 nigricornis *Prov.*
 montivagus *Prov.*
 robustus *Cress.*
 sericifrons *Cress.*
 Sanniae *Pack.*
 annulatus *Prov.*
 imitator *Prov.*
 notatus *Prov.*
 nuncius *Say.*
 extrematis *Cress.*
 atricollaris *Walsh.*

OPHIONIDÆ.

Campoplex.
 luctuosus *Prov.*
 niger *Prov.*
 laticinctus *Cress.*
 diversus *Nort.*
 vitticollis *Harr.*
 vicinus *Prov.*
 alius *Nort.*
 minor *Prov.*
 carinatus *Prov.*
 semirufus *Prov.*

Limneria.
 valida *Cress.*
 plena *Prov.*
 annulipes *Cress.*
 parva *Prov.*
 rufipes *Prov.*
 genuina *Say.*
 infuscata *Prov.*
 argentea *Prov.*
 hyalina *Prov.*
 sessilis *Prov.*
 marginata *Prov.*
 infumata *Prov.*
 elavata *Prov.*
 flavipes *Prov.*
 basilaris *Prov.*
 fusiformis *Prov.*
 flaviritea *Cress.*
 ruficoxa *Prov.*
 pallipes *Prov.*
 dentata *Prov.*
 sericea *Prov.*
 mellipes *Pur.*
 basialis *Prov.*

affabilis *Prov.*
 Smithii *Pack.*
 rufus *Prov.*
 soriculatus *Prov.*
 elongatus *Prov.*

Linoceras.
 Cloutieri *Prov.*

Mesostenus.
 collinus *Prov.*
 sericeus *Prov.*
 sagax *Prov.*
 jocosus *Prov.*
 thoracicus *Cress.*
 flavipes *Prov.*
 promptus *Cress.*
 nobilis *Prov.*

Pezomachus.
 Canadensis *Cress.*
 Pettiti *Cress.*

nigricoxa *Prov.*
 distincta *Prov.*
 dubitata *Cress.*
 compacta *Prov.*

Pyracmon.
 macrocephalum *Prov.*
 annulatum *Prov.*
 rufum *Prov.*

Podogaster.
 radiolatus *Prov.*

Cremastus.
 rectus *Prov.*
 fusiformis *Prov.*
 mellipes *Prov.*
 Royi *Prov.*
 longicaudus *Prov.*

Porizon.
 boreale *Prov.*
 angulare *Prov.*
 rugosum *Prov.*

Thersilochus.
 micans *Prov.*
 pallipes *Prov.*

Atracodes.
 scapiphorus *Prov.*
 autumnalis *Prov.*
 nigricoxus *Prov.*
 nitens *Prov.*

Exoly
 polit

Mesoc
 atriv
 plue
 rufu
 flavi

Plecti
 grac

Meso
 seric
 dece
 Moy
 ann
 albo
 tria
 inte
 ince
 dep
 rufi
 mul
 hor
 Lav
 luc
 flav
 ruf
 dis
 uni
 con
 som
 car
 un
 rhe
 faa

Cter
 sa

Exy
 va
 el
 m

Ecl
 p

Por
 F

Co
 I
 r

Exolytus.
politus Prov.

Mesochorus.
atriventris Cress.
plueralis Prov.
rufulus Prov.
flaviceps Prov.

Plectiscus.
gracilis Prov.

Exetastes.
suavolens Walsh.
ruffemoratus Prov.
affinis Cress.
matricus Prov.
albitarsis Prov.
rufus Prov.

Banchus.
formidabilis Prov.
flavovariegatus Prov.

inermis Prov.
borealis Cress.
Canadensis Cress.
ferrugineus Prov.
flavescens Cress.
pallescens Prov.

Westwoodia.
fumipennis Prov.

TRYPHONIDÆ.

Mesoleptus.
sericeus Prov.
deceus Cress.
Moyeni Prov.
annulatus Prov.
albopluralis Prov.
triangularis Cress.
interruptus Prov.
inceptus Cress.
depressus Prov.
rufipes Prov.
muliebris Cress.
honestus Cress.
Laurentianus Prov.
lucens Prov.
flavicornis Prov.
rufulus Prov.
discolor Cress.
unicolor Cress.
concolor Cress.
seminiger Prov.
canaliculatus Prov.
uniformis Prov.
rhopalocerus Prov.
fasciatus Prov.

Ctenopelma
sanguinea Prov.

Exyston.
variatus Prov.
elavatus Cress.
marginatum Prov.

Eclytus.
pleuralis Prov.

Posocentrus.
Huarti Prov.

Coleocentrus.
Pettitii Cress.
rufus Prov.

Tryphon.
Gaspesianus Prov.
Dufresnei Prov.
dorsalis Prov.
clypeatus Prov.
excavatus Prov.
Hervieuxii Prov.
seminiger Cress.
communis Cress.
Dionnei Prov.
Clapini Prov.

Mesoleius.
fissus Prov.
submarginatus Cress.
mellipes Prov.
Canadensis Prov.
tardus Prov.
antennatus Prov.

Polyblastus.
annulipes Cress.
dilatatus Prov.
Quebecensis Prov.
subcrassus Cress.

Cteniscus.
apicatus Prov.
mediatus Cress.
clypeatus Cress.
consors Cress.
rufus Prov.
crassipes Prov.

Erronemus.
pedalis Cress.
Bedardi Prov.
crassus Cress.

PIMPLIDÆ.

Acœnites.
flavipes Prov.
Canadensis Prov.

Euceros.
canadensis Cress.
Couperii Cress.
burrus Cress.
frigidus Cress.
medialis Cress.

Bassus.
tibialis Cress.
pulchripes Prov.
orbitalis Cress.
frontalis Cress.
humeralis Prov.
fuscitarsus Prov.
Belangeri Prov.
agilis Cress.
pectoralis Prov.
pallipennis Prov.
syphophanta Walsh.
costalis Prov.
saginitus Prov.
ichneumonoides Prov.
limitarsis Say.

Chorinæus.
carinatus Cress.

Orthocentrus.
pilifrons Prov.
Canadensis Prov.
abdominalis Prov.
lucens Prov.
carinatus Prov.

Exochus.
fulvipes Cress.
pygmaeus Cress.
levis Cress.
albifrons Walsh.
semirufus Cress.

Arotēs.
formosus Cress.
vicinus Cress.
amœnus Cress.

- Thalessa.**
atrata Fab.
nitida Cress.
Nortoni Cress.
lunator Fab.
- Rhyssa.**
persuasoria Linn.
Canadensis Cress.
- Epirhyssa.**
Crevieri Prov.
- Xorides.**
borealis Cress.
- Ephialtes.**
occidentalis Cress.
gigas Walsh.
pygmaeus Walsh.
tuberculatus Four.
irritator Fab.
albipes Cress.
- Perithous.**
pleuralis Cress.
- Pimpla.**
pedalis Cress.
tenuicornis Cress.
annulipes Brulle.
aequalis Prov.
Ontario Cress.
annulicornis Walsh.
picticornis Cress.
4-cingulatus Prov.
novita Cress.
indagatrix Walsh.
alboricta Cress.
inquisitor Say.
rufopectus Cress.
scriptifrons Walsh.
ptereles Say.
- Fœnus.**
tarsatorus Say.
incertus Cress.
- Oryssus.**
hæmorrhoidalis Harr.
Sayi Westw.
- Uroceros.**
flavicornis Fab.
tricolor Prov.
albicornis Harr.
- conquisitor* Say.
rufovariata Cress.
mellius Cress.
- Polysphincta.**
Burgessi Cress.
acuta Prov.
vicina Prov.
Rubricapensis Prov.
Bruneti Prov.
limata Cress.
cingulata Prov.
- Theronia.**
fulescens Cress.
rufescens Cress.
- Clistopyga.**
Canadensis Prov.
- Cylloceria.**
occidentalis Cress.
Lemoinei Prov.
- Glypta.**
tuberculifrons Walsh.
erratica Cress.
Canadensis Cress.
borealis Cress.
rufofasciata Cress.
niacra Cress.
- Metopius.**
Hageni Cress.
- Lampronata.**
punctulata Cress.
jocosa Cress.
insita Cress.
parva Cress.
pleuralis Cress.
marginata Pur.
rufipes Prov.
- EVANIDÆ.**
- Aulacus.**
stigmapterus Cress.
bilobatus Prov.
rufitarsus Cress.
- UROCERIDÆ.**
- cyaneus* Fab.
caudatus Cress.
cæruleus Cress.
- Tremex.**
columba Dru.
- Xiphidria.**
albicornis Harr.
- nigricornis* Prov.
tegularis Cress.
frigida Cress.
humeralis Prov.
brunnea Cress.
Americana Cress.
agilis Cress.
rubrica Cress.
exilis Cress.
- Arenetra.**
rufipes Cress.
- Meniscus.**
superbus Prov.
scutellatus Cress.
elegans Cress.
- Phytodictus.**
zonatus Prov.
distinctus Cress.
vulgaris Cress.
pulcherrimus Cress.
- Ecthrus.**
Provancheri Brodie.
niger Cress.
luctuosus Prov.
Canadensis Prov.
nigricornis Prov.
pediculatus Prov.
abdominalis Cress.
- Hylonomus.**
humeralis Say.
stigmapterus Say.
frigidus Cress.
albopictus Cress.
- Odontomerus.**
mellipes Say.
Canadensis Prov.
bicolor Cress.
- Pammegischia.**
Burquei Prov.
- Pelicanus.**
polycerator Say.
- maculata* Say.
Canadensis Prov.
Provancheri Cress.
- Xiphidion.**
Canadense Prov.

TENTHREDINIDÆ.

CIMBICINÆ.

Cimbex.

Americana Leach.
10-maculata Say.

Trichiosoma,

triangulum Kirb.

Abia.

Kennicotti Nort.

HYLOTOMINÆ.

Schizoceria.

sericeus Nort.

Hylotoma.

McLeayi Leach.
clavicornis Fab.

scapularis Klug.
dulciaria Say.

TENTHREDININÆ.

Cladius.

isomeria Harr.

Cræsus.

latitarsus Nort.

paupera Prov.
roseæ Harr.
ignota Nort.
flavipes Nort.
cerasi Pack.
halcyon Harr.

Pristiphora.

idiota Nort.
relativa Nort.
grossulariæ Walsh.
tibialis Nort.

Emphytus.

inornatus Say.
pallipes Prov.
apertus Harr.
cinctipes Nort.
mellipes Harr.
varianus Nort.
versicolor Nort.
tarsatus Say.
semicornis Say.
maculatus Nort.

Macrophya.

spinota Say.
lineata Nort.
flavicoxæ Nort.
proximata Nort.
pannosa Say.
incerta Nort.
externa Say.
tibiator Nort.
albomaculata Prov.
contaminata Prov.
nigra Nort.
trisyllaba Say.
zonalis Nort.
varia Nort.
eurythmia Nort.
omega Nort.
intermedia Nort.
pulchella Klug.

Acordulecera.

saginata Prov.

Euura.

orbitalis Nort.

Dolerus.

unicolor Beauv.
arvensis Say.
sericeus Say.
collaris Say.
aprilis Nort.
albifrons Nort.
apricus Say.
abdominalis Nort.
similis Nort.
bicolor Beauv.

Pachyprotasis.

omega Nort.
delta Prov.

Nematus.

malacus Nort.
Labradoris Nort.
extensicornis Nort.
monela Nort.
subalbatu Nort.
corniger Nort.
luteolus Nort.
proximatus Nort.
Saskatchewan Nort.
bivittatus Nort.
ventricosus Klug.
inquilinus Walsh.
mendicus Walsh.
salix-pomum Walsh.
fulvicrus Prov.
luteotergum Nort.
fallax Nort.
Winnipeg Nort.
longicornis Esch.
proximatus Nort.
rufofasciatus Nort.
Hudsonius Nort.
pleuricus Nort.
fulvipes Nort.
crassus Nort.
placentus Nort.
longulicornis Nort.
trilineatus Nort.
trivittatus Nort.
chloreus Nort.

Dineura.

Americana Prov.
luteipes Nort.

Sciapterix.

punctum Prov.
rotundus Nort.

Selandria.

pygmæa Say.
barda Say.
diluta Cress.
rubi Harr.
media Nort.
tiliæ Nort.
fumipennis Nort.
nubilipennis Nort.
flavicornis Prov.
obsoleta Nort.

Allantus.

basilaris Say.
originalis Nort.
annularis Nort.
cogitans Prov.
dubius Harr.
opimus Cress.

Taxonus.

nigrisoma Nort.
unicinctus Nort.
multicolor Nort.
dubitans Nort.
amicus Nort.
albidopictus Nort.
robustus Prov.

Strongylogaster.

terminalis Say.
apicalis Say.
albisectus Prov.
soriculatus Prov.
epicerna Say.
pinguis Nort.
tacitus Say.
longulus Nort.
annulosus Nort.
impressatus Prov.
politus Prov.
pallidicornis Nort.
rubro-cinctus Nort.

Tenthredo.

grandis Nort.

mellina Harr.
basilaris Prov.
ruficolor Nort.
cingulata Prov.
verticalis Say.
angulifera Nort.
eximia Nort.
lineata Prov.
mellicoxa Prov.
rufopectus Nort.
rutipes Say.
atroviolacea Harr.
dissimilis Nort.
decorata Prov.
varians Nort.
pallicoxa Prov.

mutans Nort.
signata Nort.
rufopedibus Nort.
discrepens Nort.
attracta Nort.
cingulata Prov.
jocosa Prov.
confusa Nort.
delta Prov.
14-punctata Nort.
lobata Nort.
cinctilibus Cress.
semi-rubra Nort.
cogitans Prov.
californica Nort.

LYDINÆ.

Lyda.

maculiventris Harr.
Canadensis Nort.
excavata Nort.
Burquei Prov.

pallimacula Nort.
Quebecensis Prov.
inconspicua Nort.
luteicornis Nort.

Chicoutimiensis Huart.
discolor Cress.
Provancheri Huart.
ocreata Say.

CEPHINÆ.

Phyllæcus.

bicinctus Prov.

integer Harr.

bimaculatus Nort.

XIELINÆ.

Xiela.

minor Nort.

The following were received too late for insertion in their proper places :--

Calyptus Major Cress.
Leiophron laevis Cress.

Lessonota vau Harr.
Exetostes suavolens Walsh.

Families, 26 ; Genera, 247 ; Species, 1220.

LEPIDOPTERA.

PAPILIONIDÆ.

PAPILIONINÆ.

Papilio, L.

Ajax *L.*
 Philenor *L.*
 Machaon *L.*
 Hippocrates *Feld.*
 Zolicaon, *Bd.*
 Brevicauda *Saund.*

Pieris, Schrank.

Menapia *Feld.*
 Occidentalis *Reak.*
 Protodice *Bd.-Lec.*
 Oleracea *Bd.*
 Virginensis *Edw.*
 Napi *L.*
 Rapae *L.*

Anthocharis, Bd.

Ansonides, *Bd.*

Asterias F.

Troilus *L.*
 Eurymedon *Bd.*
 Rutulus *Bd.*
 Turnus *L.*
 Daunus *Bd.*
 Cresphontes *Cram.*

PIERINÆ.

Colias, F.

Cresonia *Stoll.*
 Meadii *Edw.*
 Hecla *Lef.*
 Boothii *Curtis.*
 Eurytheme *Bd.*
 Keewaydin *Edw.*
 Christina, *Edw.*
 Astræa *Edw.*
 Eriphyle *Edw.*
 Philodice *Godt.*

Parnassius, Latr.

Clodius *Mén.*
 Baldur.
 Smintheus *Doub.*
 Nomion *Fisch.*
 Eversmanni *Mén.*

Occidentalis Scud.

Interior *Scud.*
 Scudderii *Reak.*
 Laurentina *Scud.*
 Pelidne *Bd.*
 Nastes *Bd.*
 Chippewa *Edw.*
 Paleno *L.*

Terias, Swain.

Nicippe *Cram.*

NYMPHALIDÆ.

DANAINÆ.

Danaï, Latr.

Archippus *F.*

NYMPHALINÆ.

Argynnis, F.

Nokomis *Edw.*
 Cybele *F.*
 Aphrodite *F.*
 Atlantis *Edw.*
 Columbia *H.*
 Bremmerii *Edw.*
 Bischoffii *Edw.*
 Opis *Edw.*
 Rhodope, *Edw.*
 Nevadensis *Edw.*
 Edwardsii *Reak.*
 Monticola *Behr.*
 Myrina *Cram.*
 Triclaris *Hüb.*
 Helena *Edw.*
 Chariclea *Schneid.*
 Boisduvallii, *Somm.*
 Freya *Thunb.*
 Polaris *Bd.*
 Frigga *Thunb.*

Bellona F.

Improba *Butler.*

Melitæa, F.

Phaeton *Drury.*
 Helvia *Scud.*

Phyciodes, Doub.

Harrisii *Scud.*
 Nycteis *Doub.*
 Tharos *Drury.*
 Batesii *Reak.*

Grapta, Kirby.

Interrogationis *F.*
 Comma *Harr.*
 Satyrus *Edw.*
 Rusticus *Edw.*
 Faunus *Edw.*
 Zephyrus *Edw.*
 Gracilis *Gr.-Rob.*

Silenus Edw.

Progne *Cram.*
 J Album *Bd.*

Vanessa, B.

Antiopa *L.*
 Milberti *Godt.*

Pyrameis, Doub.

Atalanta *L.*
 Huntera *Drury.*
 Cardui *L.*

Junonia, Doub.

Lavinia *Cram.*

Limenitis, F.

Ursula *F.*
 Proserpina *Edw.*
 Arthemis *Drury.*
 Disippus *Godt.*

LEPIDOPTERA.

SATYRINÆ.

Neonympha, West.
Eurytris *F.*
Canthus *L.*

Coenonympha, West.
Inornata *Edw.*
Ochracea *Edw.*

Erebia, Dalm.
Fasciata *Bull.*
Discoidalis *Kirby.*

Vesagus *West.-Hew.*
Rossii *Curtis.*
Mancinus *West.-Hew.*

Debis, West.
Portlandia *F.*

Satyrus, West.
Alope *F.*
Nephele *Kirby.*

Phocus *Edw.*

Chionobas, Bois.
Gigas *Bull.*
Chryxus *West.-Hew.*
Tarpela *Esper.*
Bore *Esper.*
Jutta *Hüb.*
Semidea *Say.*
Subhyalina *Curtis.*

LYCÆNIDÆ.

THECLINÆ.

Thecla, *F.*
Favonius *Sm.-Abb.*
Strigosa *Harr.*
Ontario *Edw.*
Calanus *Hüb.*

Edwardsii *Saund.*
Acadica *Edw.*
Californica *Edw.*
Augustus *Kirby.*
Iroides *Bd.*

Irus *Godt.*
Niphon *Hüb.*
Læta *Edw.*
Titus *F.*

LYCÆNINÆ.

Feniseca, Grote.
Tarquinius *F.*

Americana *D'Urban.*

Chrysophanus, Doub.
Thoe *Bd.-Lec.*
Dorcas *Kirby.*
Epixanthe *Bd.-Lec.*

Lycaena, Fab.
Amica *Edw.*
Pembina *Edw.*
Pheres *Bd.*
Couperi *Grote.*

Aquilo *Bd.*
Scudderii *Edw.*
Anna *Edw.*
Pseudargiolus *Bd.-Lec.*
Neglecta *Edw.*
Lucia *Kirby.*
Comyntas *Godt.*

HESPERIDÆ.

Carterocephalus, Led.
Mandau *Edw.*

Otho *Sm.-Abb.*
Peckius *Kirby.*
Mystic *Edw.*
Manataaqua *Scud.*
Metacomet *Harr.*
Viator *Edw.*
Delaware *Edw.*

Samoset *Scud.*

Pamphila, *F.*
Massasoit *Scud.*
Zabulon *Bd.-Lec.*
Comma *L.*
Sassacus *Scud.*
Uncas *Edw.*
Leonardus *Harr.*

Amblyscirtes, Speyer.
Vialis *Edw.*

Thanaos, Bd.
Brizo *Bd.*
Lucilius *Lintn.*

Eudamus, Swain.
Pylades *Scud.*
Bathyllus *Sm.-Abb.*
Tityrus *F.*

SPHINGIDÆ.

Hemaris, Dalm.
Tenuis *Gr.*
Marginatis *Gr.*
Gracilis *G. & R.*
Thysbe *Fabr.*
Thysbe, uniformis *G. & R.*

Nessus *Cram.*

Achemon *Drury.*

Aellopos, Hubn.
Tantalus *Linn.*

Thyreus, Swains.
Abbotii *Swains.*

Chærocampa, Dup.
Tersa *Linn.*

Amphion, Hubn.

Deilephila, Ochs.
Chamænerii *Harr.*
Lineata *Fabr.*

Everyx, Boisd.
Chærilus *Cram.*
Myron *Cram.*

Philampelus, Harr.
Pandorus *Hubn.*

Ampelophaga, Brem.
Versicolor *Harr.*

Smerinthus, Latr.
Geminatus Say.
Cerisyi Kirby.

Paonias, Hubn.
Excœcatus A. & S.

Calasymbolus, Gr.
Myops A. & S.

Triptogon, Bremer.
Modesta Harr.

Cressonia, G. & R.

Juglandis A. & S.

Ceratomia, Harr.
Amyntor Hubn.

Daremma, Walk.
Undulosa Walk.

Phlegethontius, Hubn.
Carolina Linn.
Cingulata Fabr.

Sphinx, Linn.
Drupiferarum Ab. & S.

Kalmie A. & S.
Chersis Hubn.
Vancouverensis Hy. Edw.
Gordius Cram.
Luscitiosa Clem.
Eremitus Hubn.

Dolba, Walk.
Hyleus Drury.

Ellema, Clem.
Bombycoides Walk.

ÆGERIADÆ.

Trochilium, Scop.
Tibiale Harris.

Bembecia, Hubn.
Marginata Harr.
Pleciiformis Walk.

Sciapteron, Straud.
Robinie Hy. Edw.

Podosesia, Mösch.
Syringæ Harris.

Albana, Hy. Edw.
Odyneripennis Walk.
Hylotomiformis Walk.
Pyramidalis Barnston.
Montana Hy. Edw.
Vancouverensis Hy.
Edw.

Torva Hy. Edw.

Sannina, Walk.
Exitiosa Say.

Ægeria, Fabr.
Henshawii Hy. Edw.
Acerni Clem.
Tipuliformis Linn.
Neglecta Hy. Edw.

THYRIDÆ.

Thyris, Illig.
Maculata Harris.

ZYGÆNIDÆ.

Grata Fabr.

Scepsis, Walk.
Fulvicollis Hubn.

Ctenucha, Kirby.
Virginica Charp.

Harrisina, Pack.
Americana Harr.

Lycomorpha, Harr.
Pholus Drury.

BOMBYCIDÆ.

Nola, Leach.
Sexmaculata Gr.

Argyrophytes, Gr.
Cilicoides Gr.
Nigrotasciata Zell.

Clemensia, Pack.
Albata Pack.

Hypoprepia, Hbn.
Fucosa Hubn.
Fucosa-miniata Kirby.

Cisthene, Walk.
Subjecta Walk.

Euphanessa, Pack.
Mendica Walk.

Crocota, Hahn.
Rubicundaria Hubn.
Aurantiaca Hubn.
Brevicornis Walk.
Ferruginosa Walk.
Quinaria Gr.

Treatii Gr.

Utetheisa, Hubn.
Bella Linn.

Callimorpha, Latr.
Interrupto-marginata
DeB.
Lecontei Boisd.
Lecontei confinis Walk.
Lecontei contigua Walk.
Lecontei fulvicosta Clem.

- Platarctia**, Paek.
Parthenos Harr.
- Euprepia**, Germ.
Cuja, Linn.
Opulenta Hy. Edw.
- Arctia**, Schrank.
Virgo Linn.
Virgo parthenice Kirby.
Saundersii Gr.
Celia Saund.
Nais Drury.
Virguncula Kirby.
Persephone Gr.
Arge Drury.
- Pyrharctia**, Paek.
Isabella Abb. & S.
- Phragmatobia**, Steph.
Rubricosa Harr.
- Antarctia**, Hubn.
Rubra Neum.
- Leucarctia**, Paek.
Acræa Drury.
- Spilosoma**, Steph.
Virginica Fabr.
- Hyphantria**, Harris.
Cunea Drury.
Textor Harris.
Punctata Fitch.
- Euchaetes**, Harris.
Egle Drury.
Oregonensis Stretch.
Collaris Fitch.
- Ecpantheria**, Hubn.
Scribonia Stoll.
- Halisidota**, Hubn.
Tessellata A. & S.
Carye Harris.
Maculata Harris.
- Orgyia**, Ochs.
Nova Fitch.
Leucosigma A. & S.
- Parorgyia**, Paek.
Clintonii G. & R.
Parallela G. & R.
- Euclea**, Hubn.
Querceti H.-S.
Ferruginea Paek.
- Empretia**, Clem.
Stimulea Clem.
- Phobetron**, Hubn.
Pithecium A. & S.
- Limacodes**, Latr.
Biguttata Paek.
Y-Inversa Paek.
Fasciola H.-S.
- Sisyrosea**, Gr.
Inornata G. & R.
- Tortricidia**, Paek.
Testacea Paek.
- Ichthyura**, Hubn.
Inversa Paek.
Albosigma Fitch.
- Datana**, Walk.
Ministra Drury.
Angusii G. & R.
Integerrima G. & R.
Contracta Walk.
- Hyparpax**, Hubn.
Aurora A. & S.
- Gluphisia**, Boisd.
Trilineata Paek.
- Lophopteryx**, Steph.
Americana Harr.
- Notodonta**, Ochs.
Stragula Gr.
Basitriens Walk.
- Lophodonta**, Paek.
Ferruginea Paek.
Angulosa A. & S.
- Pheosia**, Hubn.
Rimosa Paek.
- Nerice**, Walk.
Bidentata Walk.
- Edema**, Walk.
Albifrons A. & S.
- Ellida**, Gr.
Gelida Gr.
- Seirodonta**, G. & R.
Bilineata Paek.
- Oedemasia**, Paek.
Concinna A. & S.
Badia Paek.
- Ceolodasys**, Paek.
Unicornis A. & S.
Biguttata Paek.
- Ianassa**, Walk.
Lignicolor Walk.
- Heterocampa**, Doubl.
Obliqua Paek.
Guttivitta Walk.
Biundata Walk.
Subalbicans Gr.
- Cerura**, Schrank.
Borealis Boisd.
Occidentalis Lintn.
Cinerea Walk.
- Platypteryx**, Laep.
Arcuata Walk.
Geniculata Gr.
- Prionia**, Hubn.
Bilineata Paek.
- Dryopteris**, Gr.
Rosea Walk.
- Actias**, Leach.
Luna Linn.
- Telea**, Hubn.
Polyphemus Cram.
- Callosamia**, Paek.
Promethea Drury.
- Platysamia**, Gr.
Cecropia Linn.
Columbia Smith.
Columbia-nokomis
Brodie.
Columbia wenonah
Brodie.
- Hyperchiria**, Hubn.
Io Fabr.
- Eacles**, Hubn.
Imperialis Drury.
- Anisota**, Hubn.
Senatoria A. & S.
- Dryocampa**, Harris.
Rubiunda Fabr.
- Clisiocampa**, Curtis.
Americana Harris.
Disstria Hubn.

ays, Pack.
ornis A. & S.
ata Pack.

a, Walk.
color Walk.

ampa, Doubl.
ia Pack.
vitta Walk.
ata Walk.
oicana Gr.

Schrank.
is Boisd.
ntalis Linn.
a Walk.

ryx, Lasp.
a Walk.
la Gr.

Hubn.
ta Pack.

is, Gr.
Walk.

each.
inn.

Hubn.
mus Cram.

ia, Pack.
ea Drury.

a, Gr.
Linn.
Smith.
-nokomis
Brodie.
wenonah
Brodie.

a, Hubn.

on.
Drury.

bn.
A. & S.

Harris.
Fabr.

Curtis.
Harris.
bn.

Gastropacha, Ochs.
Americana Harris.

Tolyte, Hubn.
Vellada Stoll.
Laricis Fitch.

Leptina, Guen.
Dormitans Guen.
Latebricola Gr.
Ophthalmica Guen.
Doubledayi Guen.

Bombycia, Hubn.
Improvisa Hy. Edw.

Thyatira, Ochs.
Lorata Gr.
Pudens Guen.

Pseudothyatira, Gr.
Cymatophoroides Guen.
Cymatophoroides Ex-
pulpitrix Gr.

Habrosyne, Hubn.
Scripta Gosse.

Audela, Walk.
Acronyctooides Walk.

Platycerura, Pack.
Furcilla Pack.

Charadra, Walk.
Deridens Guen.

Raphia, Hubn.
Frater Gr.

Momaphana, Gr.
Comstocki Gr.

Diphthera, Hubn.
Fallax, H.-S.

Apatela, Hubn.
Vinnula Gr.
Grisea Walk.
Occidentalis G. & R.
Telum Guen.
Lobelie Guen.
Morula G. & R.
Hasta Guen.
Funeralis G. & R.
Innotata Guen.
Lepusculina Guen.
Insa Walk.
Americana Harr.

Cossus, Fabr.
MacMurtriei Peale.
Populi Walk.

Prionoxystus, Gr.
Robinie Peck.

NOCTUÆ.

Hastulifera A. & S.
Rubricoma Guen.
Luteicoma G. & R.
Brumosa Guen.
Noctivaga Gr.
Superans Guen.
Afflicta Gr.
Longa Guen.
Hamamelis Guen.
Dissecta G. & R.
Oblivita A. & S.

Arsilonche, Led.
Albovenosa G.

Copablepharon, Harv.
Longipenne Grote.

Harrisimemna, Gr.
Trisignata Walk.

Cerma, Hubn.
Cora Hubn.

Microcelia.
Fragilis Guen.
Diptheroides Guen.
Diptheroides Olliterata
Gr.

Bryophila.
Lepidula Gr.

Chytonix.
Falliatricula Guen.

Agrotis, Hubn.
Chardinyi Boisd.
Badicollis Gr.
Sigmoides Guen.
Phyllophora Gr.
Rubifera Gr.
Confua Tr.
Baja S. V.
Normaniana Gr.
C-nigrum Linn.
Bicarnea Guen.
Harpuspica Gr.
Gularis Gr.
Spissa Guen.
Fennica Tausch.
Subgothica Haw.

Querciperda Fitch.

Hepialus, Fabr.
Argenteomaculatus
Harr.
Thule Strk.
Gracilis Gr.

Tricosa Linn.
Tricosa A. Jaculifera
Guen.
Herilis Gr.
Plecta Linn.
Obeliscoides Guen.
Cupida Gr.
Alternata Gr.
Claudestina Harris.
Messoria Harris.
Ptychrous Gr.
Tessellata Harris.
Versipellis Gr.
Campestris Gr.
Albipennis Gr.
Redimicula Morr.
Friabilis Gr.
Catherina Gr.
Gladiatoria Morr.
Venerabilis Walk.
Vancouverensis Gr.
Clodiana Gr.
Ypsilon Rott.
Saucia Hubn.
Lubricans Guen.
Trabalis Gr.
Pressa Gr.
Prasina Fabr.
Occulta Hubn.

Anytus, Gr.
Sculptus Gr.

Pachnobia, Guen.
Salicarum Barnst.

Adita, Gr.
Chionanthi A. & S.

Mamestra, Ochs.
Purpurissata Gr.
Nimbosa Guen.
Imbrifera Guen.
Late Guen.
Adjuncta Boisd.
Lubens Gr.
Legitima Gr.
Lilacina Harv.
Rosea Harv.
Vindemialis Guen.
Picta Harris.

- Grandis* *Boisd.*
Subjuncta *G. & R.*
Atlantica *Gr.*
Distincta *Hubn.*
Trifolii *Rott.*
Pensilis *Gr.*
Vicina *Gr.*
Detracta *Walk.*
Olivacea *Morr.*
Comis *Gr.*
Lustralis *Gr.*
Meditana *Gr.*
Renigera *Steph.*
Lorea *Guen.*
Rogenhoferi *Moeschl.*
Subdita *Moeschl.*
Phoca *Moeschl.*
- Luceria**, Von Hein.
Burgessi *Morr.*
Passer *Guen.*
- Hadena**, Schrank.
Devastatrix *Brace.*
Arctica *Boisd.*
Bridghamii *G. & R.*
Dubitans *Walk.*
Sputatrix *Gr.*
Suffusca *Morr.*
Apamiformis *Guen.*
Vultuosa *Gr.*
Lignicolor *Guen.*
Verbascoides *Guen.*
Sectilis *Guen.*
Finitima *Guen.*
Impulsa *Guen.*
Cinefacta *Gr.*
Mactata *Guen.*
Indirecta *Gr.*
Miselioides *Guen.*
Chlorostigma *Harvey.*
Dunbari *Harvey.*
Modica *Guen.*
Fractilinea *Gr.*
- Pseudanarta**, Hy. Edw.
Flava *Gr.*
Flava Crocea *Hy. Edw.*
- Oligia**, Hubn.
Chalcedonia *Hubn.*
Versicolor *Gr.*
Arna *Guen.*
- Dipterygia**, Steph.
Scabriuscula *Linn.*
- Hyppa**, Dup.
Xylinoides *Guen.*
- Homohadena**, Gr.
Badistriga *Gr.*
- Kappa** *Gr.*
- Oncocnemis**, Led.
Saundersiana *Gr.*
Occata *Gr.*
- Polia**, Tr.
Acutissima *Gr.*
- Dryobota**, Led.
Stigmata *Gr.*
- Actinotia**, Hubn.
Ramosula *Guen.*
- Laphygma**, Guen.
Frugiperda *A. & S.*
- Prodenia**, Guen.
Commelinæ *A. & S.*
Flavimedia *Harv.*
Lineatella *Harv.*
- Conservula**, Gr.
Anodonta *Guen.*
- Trigonophora**, Hubn.
Periculosa *Guen.*
Periculosa *V-Brunneum*
Gr.
- Euplexia**, Steph.
Lucipara *Linn.*
- Brotolomia**, Led.
Iris *Guen.*
- Nephelodes**, Guen.
Minians *Guen.*
Minians Violans *Guen.*
- Tricholita**, Gr.
Semiaperta *Morr.*
- Helotropha**, Led.
Reniformis *Gr.*
Reniformis Atra *Gr.*
- Apamea**, Tr.
Sera *G. & R.*
Nictitans *Bkh.*
Immanis *Guen.*
Stramentosa *Guen.*
- Gortyna**, Hubn.
Cerina *Gr.*
Cataphracta *Gr.*
Purpurifascia *G. & R.*
Rutila *Guen.*
Appassionata *Harvey.*
Nitela *Guen.*
- Achatodes**, Guen.
Zee *Harris.*
- Sphida**, Gr.
Obliquata *G. & R.*
- Arzama**, Walk.
Diffusa *Gr.*
- Heliophila**, Hubn.
Pallens *Linn.*
Albilinea *Hubn.*
Ligata *Gr.*
Lapidaria *Gr.*
Phragmitidicola *Guen.*
Adonea *Gr.*
Commoides *Guen.*
Insueta *Guen.*
Unipuncta, *Haw.*
Pseudargyria *Guen.*
- Ufeus**, Gr.
Satyricus *Gr.*
Plicatus *Gr.*
- Caradrina**, Tr.
Miranda *Gr.*
Multifera *Walk.*
- Pyrophila**, Hubn.
Tragopoginis *Linn.*
Pyramidoides *Guen.*
- Orthodes**, Guen.
Infirma *Guen.*
Cynica *Guen.*
- Tæniocampa**, Guen.
Thecata *Morr.*
Furfurata *Gr.*
Oviduca *Guen.*
Incerta *Hubn.*
- Crocigrapha**, Gr.
Normani *Gr.*
- Morrisonia**, Gr.
Vomerina *Gr.*
- Parastichtis**, Hubn.
Gentilis *Gr.*
Perbellis *Gr.*
Minuscula *Morr.*
- Calymnia**, Hubn.
Orina *Guen.*
- Ipimorpha**, Hubn.
Pleonectusa *Gr.*
- Orthosia**, Ochs.
Ferrugineoides *Guen.*

les, Guen.
arris.
Gr.
ata G. & R.
Walk.
Gr.
la, Hubn.
Linn.
ea Hubn.
Gr.
ria Gr.
itidicola Guen.
Gr.
ides Guen.
Guen.
cta, Haw.
gyria Guen.
r.
is Gr.
Gr.
a, Tr.
Gr.
a Walk.
t, Hubn.
ginis Linn.
loides Guen.
Guen.
Guen.
Guen.
mpa, Guen.
Morr.
a Gr.
Guen.
Hubn.
ha, Gr.
Gr.
r, Gr.
Gr.
is, Hubn.
Gr.
Gr.
Morr.
Hubn.
n.
Hubn.
a Gr.
Ochs.
ides Guen.

Ferrugineoides Bicoloro
rago Guen.
Euroa G. & R.
Cosmia, Hubn.
Infumata Gr.
Glea, Hubn.
Anchocelioides Guen.
Eucircedia, Gr.
Pampina Guen.
Scoliopteryx, Germ.
Libatrix Linn.
Xanthia, Hubn.
Togata Esper.
Scopelosoma, Curtis.
Pettiti Gr.
Grefiana Gr.
Moffatiana Gr.
Ceromatica Gr.
Morrisoni Gr.
Sidus Guen.
Tristigmata Gr.
Litholomia, Gr.
Napaea Morr.
Lithophane, Hubn.
Disposita Morr.
Petulca Gr.
Ferrealis Gr.
Signosa Walk.
Bethunei G. & R.
Oriunda Gr.
Seminusta Gr.
Georgii Gr.
Antennata Walk.
Laticinerea Gr.
Cinerosa Gr.
Tepida Gr.
Baileyi Gr.
Querquera Gr.
Pexata Gr.
Thaxteri Gr.
Capax G. & R.
Lithomia, Hubn.
Germana Morr.
Calocampa, Steph.
Nupera Lintn.
Cineritia Gr.
Curvimacula Morr.
Cucullia, Schr.
Convexipennis G. & R.
Asteroides Guen.
Florea Guen.
Intermedia Spey.

Crambodes, Guen.
Talidiformis Guen.
Nolaphana, Gr.
Malana Fitch.
Aletia, Hubn.
Argillacea Hubn.
Marasmalus, Gr.
Histrio Gr.
Calpe, Tr.
Canadensis Beth.
Plusiodonta, Guen.
Compressipalpis Guen.
Telesilla, H.-S.
Cinereola Guen.
Abrostola, Ochs.
Urentis Guen.
Deva, Walk.
Purpurigera Walk.
Plusia, Fabr.
Aerea Hubn.
Aereoides Gr.
Baliaca Gey.
Falcigera Kirby.
Contexta Gr.
Putnami Gr.
Striatella Gr.
Formosa Gr.
Thyatiroides Guen.
Mappa G. & R.
Bimaculata Steph.
Biloba Steph.
Precationis Guen.
Californica Spey.
Ou Guen.
Celsa Hy. Edw.
U-Aureum Boisd.
Mortuorum Guen.
Octoscripta Sanborn.
Viridisignata Gr.
Ampla Walk.
Simplex Guen.
Anarta, Ochs.
Cordigera Thunb.
Schinia, Hubn.
Rectifascia Gr.
Chloridea, Westw.
Subflexa Guen.
Rhodophora, Guen.
Florida Guen.

Melicleptria, Hubn.
Honesta Gr.
Oregonica Hy. Edw.
Heliothis, Hubn.
Armiger Hubn.
Lygranthocia, Gr.
Rivulosa Guen.
Anthocia, Guen.
Arcifera Guen.
Spraguei Gr.
Pyrrhia, Hubn.
Exprimens Walk.
Angulata Gr.
Tarache, Hubn.
Erastrioides Guen.
Candefacta Hubn.
Lithacodia, Hubn.
Bellicula Hubn.
Chamyris, Guen.
Cerintha Tr.
Eustrotia, Hubn.
Albidula Guen.
Secta Gr.
Concinimacula Guen.
Synochitis G. & R.
Muscosula Guen.
Carneola Guen.
Apicosa Haw.
Caduca Gr.
Mariæ Gr.
Galgula, Guen.
Hepara Guen.
Subpartita Guen.
Brepbos, Hubn.
Infans Moeschl.
Drasteria, Hubn.
Erechtæa Cram.
Erichto Guen.
Euclidia, Hubn.
Cuspidea Hubn.
Syneda, Guen.
Hudsonica G. & R.
Graphica Hubn.
Melipotis, Hubn.
Limbolaris Gey.
Catocala, Schrank.
Epione Drury.

- Viduata Guen.*
Retecta Gr.
Obscura Strk.
Insolabilis Guen.
Residua Gr.
Levettei Gr.
Relicta Walk.
Junctura Walk.
Amatrix Hubn.
Cara Guen.
Antinympa Hubn.
Concumbens Walk.
Meskei Gr.
Unijuga Walk.
Briseis Edw.
Semirelecta Gr.
Faustina Strk.
Parta Guen.
Coccinata Gr.
Ultronia Hubn.
Aholibah Strk.
Ilia Cram.
Innubens Guen.
Innubens Scintillans
Gr. & R.
Cerogama Guen.
Neogama Ab. & Sm.
Subnata Gr.
Piatrix Gr.
Palæogama Guen.
Habilis Gr.
Cælebs Gr.
Serena Edw.
Clintonii Gr.
Polygama Guen.
Cratægi Saund.
Amasia Ab. & Sm.
Similis Edw.
Fratercula G. & R.
Præclara G. & R.
Grynea Cram.
Gracilis Edw.
Amica Hubn.
- Allotria, Hubn.**
Elongympha Hubn.
- Parthenos, Hubn.**
Nubilis Hubn.
- Phoberia, Hubn.**
Atomaris Hubn.
- Celiptera, Guen.**
Frustulum Guen.
- Parallelia, Hubn.**
Bistriaris Hubn.
- Panopoda, Guen.**
Rufimargo, Hubn.
- Remigia, Guen.**
Latipes Guen.
Hexastylus Harr.
- Antiblemma, Hubn.**
Canalis Gr.
- Erebus, Latr.**
Odora Linn.
- Zale, Hubn.**
Horrida Hubn.
- Pheocyma, Hubn.**
Lunifera Hubn.
- Homoptera Boisid.**
Edusa Drury.
Edusa Saundersii Beth.
Edusa Lunata Drury.
Minerea Guen.
Calycanthata Ab. & S.
Albofasciata Beth.
Obliqua Guen.
Duplicata Beth.
Benesignata Harr.
- Ypsia, Guen.**
Undularis Drury.
Undularis Umbripennis
Gr.
- Homopyralis, Gr.**
Tactus Gr.
- Spargoloma, Gr.**
Sexpunctata Gr.
Umbri-fascia Gr.
- Pangrapta, Hubn.**
Decoralis Hubn.
- Pseudaglossa, Gr.**
Lubricalis Gey.
- Epizeuxis, Hubn.**
Aemula Hubn.
Americalis Guen.
- Megachyta, Gr.**
Lituralis Hubn.
- Litognatha, Gr.**
Nubilifascia Gr.
- Chytolita, Gr.**
Morbidalis Guen.
- Pityolita, Gr.**
Pedipilalis Guen.
- Zanclognatha, Led.**
Laevigata Gr.
Ochreipennis Gr.
Cruralis Guen.
Marcidilinea Gr.
- Philometra, Gr.**
Longilabris Gr.
Serraticornis Gr.
- Rivula, Guen.**
Propinqualis Guen.
- Palthis, Hubn.**
Angulalis Hubn.
Asopialis Guen.
- Phalenophana, Gr.**
Rurigena Gr.
- Renia, Guen.**
Belfragei Gr.
Plenilinealis Gr.
- Bleptina, Guen.**
Caradrinalis Guen.
- Lomanaltes, Gr.**
Lactulus Gr.
- Hypena, Fabr.**
Baltimoralis Guen.
Scutellaris Gr.
Manalis Walk.
Abalienalis Walk.
Achatinalis Zell.
Profecta Gr.
Deceptalis Walk.
Perangulalis Harr.
Vellifera Gr.
Evanidalis Rob.
Scabra Fabr.
Scabra Subrufalis, Gr.

GEOMETRIDÆ.

- Prochoerodes, Guen.**
Clemitaria A. & S.
Transversata Drury.
- Tetracis, Guen.**
Crocallata Guen.
Lorata Grote.
- Metanema, Guen.**
Inatomaria Guen.

- atha**, Gr.
fascia Gr.
a, Gr.
alis Guen.
a, Gr.
alis Guen.
natha, Led.
ata Gr.
ennis Gr.
s Guen.
ilinea Gr.
ra, Gr.
bris Gr.
ornis Gr.
uen.
ualis Guen.
Hubn.
is Hubn.
s Guen.
hana, Gr.
a Gr.
en.
Gr.
alis Gr.
Guen.
alis Guen.
es, Gr.
Gr.
abr.
alis Guen.
s Gr.
Walk.
is Walk.
is Zell.
Fr.
Walk.
is Harv.
Fr.
Rob.
br.
brufalis, Gr.
Caberodes, Guen.
Confusaria Hubn.
Cervinaria Pack.
Ennomos, Tr.
Alniaria Linn.
Eudalimia, Hubn.
Subsignaria Hubn.
Azelina, Guen.
Morrisonata Hy. Edw.
Endropia, Guen.
Obtusaria Hubn.
Effectaria Walk.
Pectinaria W. V.
Bilineararia Pack.
Armataria H.-S.
Madusaria Walk.
Homuraria G. & R.
Hypochraria H.-S.
Metrocampa, Guen.
Margaritata Linn.
Anagoga, Hubn.
Pulveraria Linn.
Sicya, Guen.
Macularia Harris.
Angerona, Dup.
Crocataria Fab.
Nematocampa, Guen.
Filamentaria Guen.
Hyperetis, Guen.
Amicaria H.-S.
Aplodes, Guen.
Mimosaria Guen.
Synchlora, Guen.
Rubivora Riley.
Nemoria, Hubn.
Gratata Walk.
Eucrostis, Hubn.
Chloroleucaria Guen.
Dyspteris, H.-S.
Abortivaria H.-S.
Acidalia, Tr.
Inductata Guen.
Quadrilineata Pack.
Enucleata Guen.
Purata Guen.
Calledapteryx, Gr.
Dryopterata Gr.
Stegania, Guen.
Pustularia Guen.
Gueneria, Pack.
Basiata Walk.
Deilinia, Hubn.
Erythemaria Guen.
Eudeilinia, Pack.
Herminiata Guen.
Corycia, Dup.
Vestaliata Guen.
Semiclarata Walk.
Semiothisa, Hubn.
Granitata Guen.
Lozogramma, Steph.
Defluata, Walk.
Eufitchia, Pack.
Ribearia Fitch.
Caripeta, Walk.
Divisata Walk.
Ematurga, Led.
Faxonii Minot.
Fidonia, Tr.
Truncataria Walk.
Notataria Walk.
Hæmatopis, Hubn.
Grataria Fabr.
Aspilates, Tr.
Lintneraria Pack.
Hemerophila, Steph.
Unitaria H.-S.
Cymatophora, Hubn.
Larvaria Guen.
Crepuscularia Tr.
Divisaria Walk.
Tephrosia, Boisid.
Canadaria Guen.
Anticaria Walk.
Paraphia, Guen.
Deplataria Guen.
Biston, Leach.
Ursarius Walk.
Eubyja, Hubn.
Cognataria Guen.
Quernaria A. & S.
Hybernia, Latr.
Tiliaria Harris.
Phigalia, Dup.
Strigataria Minot.
Anisopteryx, Steph.
Vernata Harris.
Operophtera, Hubn.
Boreata Hubn.
Heterophleps, H.-S.
Triguttaria H.-S.
Baptia, Hubn.
Albovittata Guen.
Lobophora, Curtis.
Vernata Pack.
Triphosa, Curt.
Indubitata Gr.
Hydria, Hubn.
Undulata, L.
Phibalapteryx, Steph.
Intestinata Guen.
Anticlea, Steph.
Vasaliata Guen.
Rheumaptera, Hubn.
Ruficillata, Guen.
Lacustrata Guen.
Hastata Linn.
Ochyria, Hubn.
Ferrugata Linn.
Designata Hubn.
Petrophora, Hubn.
Diversilineata Hubn.
Packardata Lintn.
Hersiliata Guen.
Hydriomena, Hubn.
Trifasciata Borkh.
Epirrita, Hubn.
Cambricaria Curtis.

Plemyria, Hubn.
Fluviata *Hubn.*
Multiferata *Walk.*

Asopia, Tr.
Farinalis *Linn.*
Costalis *Fabr.*
Olinalis *Guen.*
Devialis *Gr.*
Squamealis *Gr.*

Cordylopeza, Zell.
Nigrinodis *Zell.*

Scoparia, Haw.
Centuriella *S. V.*

Botis, Schrank.
Octomaculata *Linn.*
Inequalis *Guen.*
Generosa *G.-R.*
Borealis *Pack.*
Signatalis *Walk.*
Sumptuosalis *Walk.*
Harveyana *Gr.*
Badipennis, *Gr.*
Socialis *Gr.*
Citrina *G.-R.*
Marculeta *G.-R.*
Submedialis *Gr.*
Gentilis *Gr.*
Magistralis *Gr.*
Terrealis *Tr.*
Tertialis *Guen.*
Magniferalis *Walk.*

Teras, Tr.
Scabrana *Curt.*
Nigrolinea *Rob.*

Cacœcia, Hubn.
Rosaceana *Harris.*
Purpurana *Clem.*
Cerasivorana *Fitch.*

Loxotænia, Steph.
Affictana *Walk.*

Ptycholoma, Steph.
Pericana *Fitch.*
Melaleucana *Walk.*

Pandemis, Hubn.
Limitata *Rob.*

Lophoderus, Steph.
Juglandana *Fern.*

Glaucopteryx, Hubn.
Cumatilis *G. & R.*

PYRALIDÆ.

Illibalis *Hubn.*
Plectilis *G.-R.*
Subolivalis *Pack.*
Niveicillialis *Gr.*

Eurycreon, Led.
Chortalis *Gr.*

Nomophila, Hubn.
Noctuella *S. V.*

Samea, Guen.
Huronalis *Guen.*

Crocidophora, Led.
Anticostalis *Gr.*

Pantographa, Led.
Limata *G.-R.*

Eudioptis, Hubn.
Hyalina *Linn.*

Desmia, Westw.
Maculalis *Westw.*

Cindaphia, Led.
Bicoloralis *Guen.*

Oligostigma, Guen.
Albalis *Rob.*

TORTRICIDÆ.

Tortrix, Linn.
Albicomana *Clem.*
Peritana *Clem.*
Alisellana *Rob.*
Fumiferana *Clem.*

Cnectra, Guen.
Puritana *Rob.*

Cenopsis, Zell.
Pettitana *Rob.*

Dichelia, Guen.
Sulfureana *Clem.*

Amphisa, Curt.
Discopunctana *Clem.*

Capua, Steph.
Furcatana *Walk.*

Eupethecia, Curtis.
Subapicata *Guen.*
Miserulata *Grote.*

Hydrocampa, Guen.
Genuinalis *Led.*
Ekthlipsis *Gr.*

Tetralopha, Zell.
Asperatella *Clem.*

Phycis, Haw.
Ipdiginella *Zell.*

Dakruma, Gr.
Convolutella *Hubn.*

Argyria, Hut n.
Nivalis *Drury.*
Auratella *Clem.*

Crambus, Fabr.
Girardellus *Clem.*
Leachellus *Zinec.*
Labradoriensis
Christoph.
Agitatellus *Clem.*
Albellus *Clem.*
Laqueatellus *Clem.*
Oregonicus *Gr.*
Interruptus *Gr.*
Attenuatus *Gr.*
Ruricollellus *Zell.*
Vulgivagellus *Clem.*

Retinia, Guen.
Duplana *Hubn.*
Sylvestrana *Curt.*

Penthina, Tr.
Osmundana *Fern.*

Sericoris, Tr.
Coruscana *Clem.*

Tmetocera, Led.
Ocellana *Schiff.*

Phoxopterus, Tr.
Discigerana *Walk.*
Spireæfoliana *Clem.*

Grapholitha, Tr.
Interstinctana *Clem.*

Carpocapsa, Tr.
Pomonella *Linn.*

COLEOPTERA.

CICINDELIDÆ.

Cicindela Linn.
longilabris Say.
montana Lec.
Lecointei Hald.
andubermi Lec.
6-guttata Fab.
10-notata Say.

splendida Hentz.
limbalis Kl.
purpurea Oliv.
generosa Dej.
vulgaris Say.
obliquata Kirby.
12-guttata Dej.

repanda Dej.
hirticollis Say.
cinctipennis Lec.
limbata Say.
lepida Dej.
punctulata Fab.

CARABIDÆ.

Omophron Latr.
robustum Horn.
americanum Dej.
tessellatum Say.

calidum Fab.
tepidum Lec.
moniliatum Lec.
Zimmermanni Lec.

quadripennis Dej.
conformis Dej.
cyanipennis Say.
alternans Dej.
ballistarius Lec.
fumana Fab.
similis Lec.
cordicollis Dej.

Elaphrus Fab.
Clairvillei Kirby.
cicatricosus Lec.
Lecointei Gr.
obscurus Kirby.
riparius Linn.
ruscarius Say.

Carabus Linn.
Vietinghovii Adams.
limbatus Say.
serratus Say.
mæander Fisch.
vinctus Web.
ligatus Germ.
sylvosus Say.
tædatus Fab.
Agassizii Lec.

Galerita Fabr.
janus Fabr.
bicolor Drury.

Blethisa Bon.
quadricollis Hald.
Julii Lec.

Casnonia Latr.
pennsylvanica Linn.

Loricera Latr.
cærulescens Linn.

Cychrus Fabr.
Lecointei Dej.
canadensis Chd.
viduus Dej.

Anchonoderus.
quadrinotatus Horn.

Trachypachys Mots.
inermis Mots.

Scarites Fabr.
subterraneus Fabr.

Anchus.
pusillus Lec.

Notiophilus Dum.
semistriatus Say.
sibiricus Mots.
æneus Hb.

Dyschirius B
nigripes Lec.
globulosus Say.
sphaericollis Say.
setosus Lec.

Plochionus Dej.
timidus Hald.

Opisthius Kirby.
Richardsoni Kirby.

Clivina Latr.
pallida Say.
cordata Putz.

Loxopeza Chaud.
grandis Hentz.
atriveutris Say.
tricolor Say.

Nebria Latr.
Sahlbergi Fisch.
Mannerheimii Fisch.
pallipes Say.

Schizogenius Putz.
lineolatus Say.

Lebia Latr.
cyanipennis Dej.
viridis Say.
moesta Lec.
pumila Dej.
viridipennis Dej.
ornata Say.
fuscata Dej.

Calosoma Web.
scrutator Fab.
Willcoxi Lec.
frigidum Kirby.
obsoletum Say.

Brachynus Web.
minutus Harr.
perplexus Dej.
medius Harr.

Dianchomena Chd.
scapularis Dej.

- Aphelogenia** Chd.
vittata *Fab.*
fuscata *Lec.*
divisa *Lec.*
- Tetragonoderus** Dej.
intersectus *Germ.*
- Dromius** Bon.
piceus *Dej.*
- Apristus** Chand.
subsulcatus *Dej.*
- Metabletus** Schmidt.
americanus *Dej.*
- Blechnus** Motsch.
linearis *Lec.*
- Axinopalpus** Lec.
biplagiatus *Dej.*
- Cymindis** Latr.
laticollis *Say.*
cribricollis *Dej.*
unicolor *Kirby.*
pilosa *Say.*
americana *Dej.*
neglecta *Hald.*
- Pinacodera** Schaum.
platicollis *Say.*
- Callida** Dej.
purpurea *Say.*
punctata *Lec.*
- Calathus** Bon.
gregarius *Say.*
ingratus *Dej.*
opaculus *Lec.*
ruficollis *Dej.*
advena *Lec.*
impunctata *Say.*
- Platynus** Bon.
hypolithus *Say.*
maurus *Mots.*
cincticollis *Say.*
bicoloratus *Germ.*
brunneomarginatus *M.*
decens *Say.*
sinuatus *Dej.*
funebrius *Lec.*
extensicollis *Say.*
viridis *Lec.*
decorus *Say.*
anchomenoides *Rand.*
moerens *Dej.*
melanarius *Dej.*
metallescens *Lec.*
tenuis *Lec.*
- affine *Kirby.*
atratus *Lec.*
corvus *Lec.*
brevicollis *Dej.*
cupripennis *Say.*
punctiformis *Say.*
rubripes *Zimm.*
limbatus *Say.*
crenistriatus *Lec.*
excavatus *Dej.*
ferreus *Hald.*
picticornis *Newm.*
subcordatus *Lec.*
basalis *Lec.*
nutans *Say.*
sordens *Kirby.*
ruficornis *Lec.*
picipennis *Kirby.*
lutulentus *Lec.*
octopunctatus *Fabr.*
cupreus *Dej.*
placidus *Say.*
variolatus *Lec.*
obsoletus *Say.*
bembidioides *Kirby.*
quadripunctatus *Def.*
simile *Kirby.*
retractus *Lec.*
- Olisthopus** Dej.
parmatus *Say.*
micans *Lec.*
- Pterostichus** Bon.
protractus *Lec.*
castanipes *Mén.*
adexus *Say.*
rostratus *Newm.*
mancus *Lec.*
honestus *Say.*
lachrymosus *Newm.*
coracinus *Newm.*
stygius *Say.*
relictus *Newm.*
punctatissimus *Rand.*
permundus *Say.*
corvus *Lec.*
Sayi *Brullé*
lucublandus *Say.*
bicolor *Lec.*
convexicollis *Say.*
caudicalis *Say.*
luctuosus *Dej.*
corvinus *Dej.*
mutus *Say.*
orinomum *Leach.*
Luczotii *Dej.*
erythropus *Dej.*
patruelis *Dej.*
femorialis *Kirby.*
desidiosus *Lec.*
empetricola *Dej.*
mandibularis *Kirby.*
- Lophoglossus** Lec.
tartaricus *Say.*
scrutator *Lec.*
- Myas** Dej.
coracinus *Say.*
cyanescens *Dej.*
- Amara** Bon.
avida *Say.*
arenaria *Lec.*
similis *Kirby.*
rufimanus *Kirby.*
jacobinae *Lec.*
laticollis *Lec.*
carinata *Lec.*
brunnipennis *Dej.*
furtiva *Say.*
lator *Kirby.*
septentrionalis *Lec.*
angustata *Say.*
pallipes *Kirby.*
longula *Zimm.*
impuncticollis *Say.*
littoralis *Zimm.*
fallax *Lec.*
confusa *Lec.*
erratica *Sturm.*
interstitialis *Dej.*
californica, *Dej.*
obesa *Say.*
terrestris *Lec.*
chalcea *Dej.*
indistincta *Mann.*
gibba *Lec.*
subænea *Lec.*
musculus *Say.*
pygmæa *Coup.*
- Badister** Clairv.
notatus *Hald.*
pulchellus *Lec.*
micans *Lec.*
- Diplochila** Brullé.
laticollis *Lec.*
major *Lec.*
impressicollis *Dej.*
- Dicælus** Bon.
purpuratus *Bon.*
simplex *Dej.*
elongatus *Dej.*
teter *Bon.*
politus *Dej.*
- Anomoglossus** Chd.
emarginatus *Say.*
- Brachylobus**.
lithophilus *Say.*

Chlaenius Lec.
caricarius Say.
atator Lec.
 Dej.
cinus Say.
escens Dej.
 a Bon.
 a Say.
aria Lec.
is Kirby.
manus Kirby.
vinæ Lec.
illis Lec.
tata Lec.
nipennis Dej.
 a Say.
 Kirby.
atrimonialis Lec.
 tata Say.
es Kirby.
la Zimm.
cticoellis Say.
lis Zimm.
 Lec.
 a Lec.
 a Sturm.
itialis Dej.
 nica, Dej.
 Say.
ris Lec.
 a Dej.
icta Mann.
 Lec.
 a Lec.
us Say.
 a Coup.
 Clairv.
 Hald.
us Lec.
 Lec.
 a Brullé.
 Lec.
 ec.
 collis Dej.
 Bon.
ns Bon.
 Dej.
 a Dej.
 Dej.
 ec.
ssus Chd.
us Say.
 is.
 s Say.

Chlaenius Bon.
erythropus Germ.
sericeus Forster.
leucoscelis Chev.
solitarius Say.
memoralis Say.
pennsylvanicus Say.
tricolor Dej.
vafer Lec.
circumcinctus Say.
impunctifrons Say.
niger Randall.
tomentosus Say.
Atraneus Lec.
pubescens Dej.
Lachnocrepis Lec.
parallelus Say.
Oodes Bon.
fluvialis Lec.
Nomius Lap.
pygmaeus Dej.
Nothopus Lec.
zabroides Lec.
Geopinus Lec.
incrassatus Dej.
Agonoderus Dej.
lineola Fabr.
coma Fab.
pallipes Fab.
partiaris Say.
pauperculus Dej.
Anisodactylus Dej.
piceus Men.
oregona Evans.
confusus Lec.
rusticus Dej.
dulcicollis Laf.
carbonarius Say.
nigerrimus Dej.
punctulatus Lec.
Harrisii Lec.
nigrita Dej.
discoideus Dej.
baltimorensis Say.
agricola Say.
sericeus Harris.
Xestonotus Lec.
lugubris Dej.
Spongopus Lec.
verticalis Lec.
Amphasia Newm.
interstitialis Say.

Anisotarsus Chd.
piceus Lec.
terminatus Say.
agilis Dej.
Bradycellus Er.
dichrous Dej.
vulpeculus Say.
autumnalis Say.
badiipennis Hald.
atrimedius Say.
nigrinus Dej.
tibialis Kirby.
cognatus Gyll.
rupestris Say.
tantillus Chd.
neglectus Lec.
nitidus Dej.
arenarius Lec.
Selenophorus Dej.
palliatu Fabr.
granarius Dej.
Harpalus Latr.
erraticus Say.
amputatus Say.
viridiæneus Beauv.
caliginosus Fabr.
faunus Say.
vagans Lec.
pennsylvanicus Deg.
compar Lec.
erythropus Dej.
megacephalus Lec.
pleuriticus Kirby.
herbivagus Say.
ellipsis Lec.
cautus Dej.
rufimanus Lec.
Lewisii Lec.
ruficornis Lec.
laticeps Lec.
fraternus Lec.
funestus Lec.
oblitus Lec.
ochropus Kirby.
basilaris Kirby.
varicornis Lec.
longior Kirby.
Stenolophus Dej.
fuliginosus Dej.
conjunctus Say.
ochropezus Say.
dissimilis Dej.
hydropicus Lec.
carus Lec.
Patrobus Dej.
longicornis Say.
septentrionis Dej.

rugicollis Randall.
aterimus Dej.
Amerizus Chd.
oblongulus Mannh.
Bembidium Latr.
punctatostriatum Say.
impressum Fabr.
paludosum Sturm.
inaequale Say.
coxendix Say.
nitidulum Dej.
nitidum Kirby.
erasum Lec.
americanum Dej.
dilatatum Lec.
antiquum Dej.
chalcum Dej.
concolor Kirby.
quadrulum Lec.
nigrum Say.
planatum Lec.
simplex Lec.
complanulum Mann.
funerum Lec.
fugax Lec.
planum Hald.
transversale Dej.
erasum Mots.
striola Lec.
bimaculatum Kirby.
lucidum Lec.
rupestre Dej.
picipes Kirby.
scopulinum Kirby.
nitens Lec.
incrementatum Lec.
approximatum Lec.
viridicolle Laf.
dorsale Say.
conspersum Chd.
patruæ Dej.
variegatum Say.
intermedius Kirby.
nigripes Kirby.
versicolor Lec.
pictum Lec.
sulcatum Lec.
connivens Lec.
assimile Gyll.
stenolophus Lec.
mutatum Germ.
quadrimalatum Linn.
semistriatum Hald.
carinula Chd.
Tachys Ziegler.
scitulus Lec.
laevus Say.
nanus Gyll.
flavicauda Say.
tripunctatus Say.
incurvus Say.

HALIPLIDÆ.

Haliplus Latr.
fasciatus *Aubé*.
triopsis *Say*.

cribrarius *Lec*.
ruficollis *Dej*.
longulus *Lec*.

Cnemidotus Er.
12-punctatus *Say*.

DYTISCIDÆ.

Celina Aubé.
angustata *Aubé*

Laccophilus Leach.
maculosus *Germ*.
proximus *Say*.

Rhantus Esch.
binotatus *Harr*.
bistriatus *Bergst*.
tostus *Lec*.
sinuatus *Lec*.

Hydroporus Clv.
inæqualis *Fab*.
convexus *Aubé*.
picatus *Kirby*.
impressopunctatus *Sch*.
turbidus *Lec*.
catascopium, *Say*.
nigrolineatus *Steph*.
ovoides *Lec*.
patruelis *Lec*.
nubilus *Lec*.
niger *Say*.
mellitus *Lec*.
lacustris *Say*.
affinis *Say*.
fuscus *Cr*.
alpinus *Payk*.
rotundatus *Lec*.
griseostriatus *Deg*.
consimilis *Lec*.
sericeus *Lec*.
undulatus *Say*.
oppositus *Say*.
spurius *Lec*.
vittatus *Lec*.
lineolatus *Lec*.
modestus *Aubé*.
signatus *Mannh*.
puberulus *Mannh*.
tenebrosus *Lec*.
caliginosus *Lec*.
tristis *Payk*.
subtensus *Lec*.
collaris *Lec*.
oblitus *Aubé*.
concinus *Lec*.
conoideus *Lec*.
difformis *Lec*.
striatopunctatus *Mels*.

Agabetes Cr.
acuductus *Harris*.

Acilius Leach.
semisulcatus *Aubé*.
mediatus *Say*.
fraternus *Harr*.

Ilybius Er.
viridiæneus *Cr*.
picipes *Kirby*.
4-maculatus *Aubé*.
biguttalus *Germ*.

Thermonectes Esch.
basilaris *Harr*.

Matus Aubé.
bicarinatus *Say*.

Graphoderes Esch.
cinereus *Linn*.
liberus *Say*.

Coptotomus Say.
interrogatus *Fab*.

Hydaticus Leach.
piceus *Lec*.
bimarginatus *Say*.
rugicollis *Kirby*.

Copelatus Er.
glyphicus *Say*.

Scutopterus Esch.
Hornii *Cr*.

Ilybiosoma Cr.
bifarius *Kirby*.

Colymbetes Clv.
sculptilis *Harr*.
reticulatus *Kirby*.
asimilis *Kirby*.
picipes *Kirby*.

Gaurodytes Thoms.
erythropterus *Say*.
teniolatus *Harr*.
semivittatus *Lec*.
semipunctatus *Kirby*.
aeneolus *Cr*.
obliteratus *Lec*.
lutosus *Cr*.
seriatus *Say*.
paralleus *Lec*.
infuscatus *Aubé*.
scapularis *Mannh*.
ambiguus *Lec*.
punctatus *Mels*.
stagninus *Say*.
obtusatus *Say*.
punctulatus *Aubé*.
fimbriatus *Lec*.
tristis *Aubé*.
arcticus *Payk*.
gagates *Aubé*.
hypomelas *Mannh*.
lævidorsus *Lec*.
bicolor *Kb*.

Cymatopterus Esch.
longulus *Lec*.
seminiger *Lec*.

Dytiscus Lynn.
Harrisii *Kirby*.
confluens *Say*.
anxius *Mannh*.
Cordieri *Aubé*.
verticalis *Say*.
fasciventris *Say*.
hybridus *Aubé*.

Cybister Curt.
fimbriolatus *Say*.

GYRINIDÆ.

Dineutus MacL.
vittatus *Germ*.
carolinus *Lec*.

discolor *Aubé*.
assimilis *Aubé*.

Gyrinus Linn.
confinis *Lec*.
fraternus *Coup*.

limbatus *Say.*
 aeneolus *Lec.*
 aeneus *Leach.*
 ventralis *Kirby.*

aquiris *Lec.*
 affinis *Aube.*
 picipes *Aube.*
 borealis *Aube.*

lugens *Lec.*
 analis *Say.*
 minutus *Fab.*

otus *Er.*
 ctatus *Say.*

s *Esch.*
 tus *Harr.*
 tus *Bergst.*
Lec.
 is *Lec.*

Er.
 eneus *Cr.*
 Kirby.
 alatus *Aube.*
 alus *Germ.*

Aulé.
 natus *Say.*

omus *Say.*
 gatus *Fab.*

us *Er.*
 us *Say.*

oma *Cr.*
 s *Kirby.*

ytes *Thoms.*
 atus *Say.*

atus *Harr.*
 ttatus *Lec.*

inctatus *Kirby.*
 us *Cr.*

tatus *Lec.*
 s *Cr.*

us *Say.*
 us *Lec.*

tus *Aube.*
 aris *Mannh.*

us *Lec.*
 atus *Mels.*

us *Say.*
 tus *Say.*

alatus *Aube.*
 atus *Lec.*

Aube.
 is *Payk.*
 s *Aube.*

elas *Mannh.*
 orsus *Lec.*
 r *Kb.*

Linn.
 s *Lec.*

us *Coup.*

Helophorus *Fabr.*
 oblongus *Lec.*
 lacustris *Lec.*
 linearis *Lec.*
 lineatus *Say.*
 inquinatus *Mannh.*
 tuberculatus *Gyll.*

Hydrochus *Leach.*
 excavatus *Lec.*
 subcupreus *Rand.*
 squamifer *Lec.*
 simplex *Lec.*

Ochthebius *Leach.*
 cribricollis *Lec.*
 nitidus *Lec.*
 Holmbergi *Mäkl.*

Hydraena *Kug.*
 pennsylvanica *Kiesw.*

Hydrophilus *Geoff.*
 ovatus *H. & G.*
 triangularis *Say.*

Ptilium *Er.*
 canadense *Ulk.*

Falagria *Leach.*
 dissecta *Er.*
 venustula *Er.*

Homalota *Mann.*
 plana *Gyll.*
 lividipennis *Mann.*

Aleochara *Grav.*
 lata *Grav.*
 brachypterus *Fourc.*
 bimaculata *Grav.*
 nitida *Grav.*
 puberula *H.*

Gyrophæna *Mann.*
 vinula *Er.*
 socia *Er.*

Tropisternus *Sol.*
 nimbatus *Say.*
 glaber (*Hb.*).
 mixtus *Lec.*
 ellipticus *Lec.*

Hydrocharis *Latr.*
 obtusatus (*Say.*)

Berosus *Leach.*
 peregrinus (*Hb.*).
 infuscatus *Lec.*
 striatus *Say.*

Laccobius *Er.*
 agilis *Rand.*

Chaëtarthria *Steph.*
 nigrella *Lec.*
 pallida *Lec.*

Philhydrus *Sol.*
 nebulosus *Say.*
 bifidus *Lec.*
 ochraceus *Mels.*
 consors *Lec.*
 cinctus *Say.*

diffusus *Lec.*
 perplexus *Lec.*
 maculicollis *Muls.*
 fimbriatus *Mels.*
 lacustris *Lec.*
 rotundatus *Say.*

Hydrobius *Leach.*
 fuscipes *Linn.*
 globosus *Say.*
 tumidus *Lec.*
 tessellatus *Ziegl.*
 digestus *Lec.*
 subcupreus *Say.*
 despectus *Lec.*
 suturalis *Lec.*

Cercyon *Leach.*
 flavipes *Er.*
 limbatum *Mannh.*
 centromaculatum *St.*
 prætextatum *Say.*
 unipunctatum *Linn.*
 anale *Er.*
 posticatum *Mann.*

Cryptopleurum *Muls.*
 vagans *Lec.*

TRICHOPTERYGIDÆ.

Trichopteryx *Kirby.*
 Haldemanni *Lec.*

Limulodes *Matth.*
 paradoxus *Matth.*

STAPHYLINIDÆ.

Leucoparyphus *Kraatz*
 silphoides *Linn.*

circumcinctus *Mäkl.*
 limbatus *Mels.*
 tachyporoides *Horn.*
 debilis *Horn.*
 flavipennis *Dej.*
 mimus *Horn.*
 addendus *Horn.*
 parallelus *Horn.*
 Crotchii *Horn.*
 nitiduloides *Horn.*

Coproporus *Kraatz*
 ventriculus *Er.*

Physetoporus *Horn*
 grossulus *Lec.*

Tachinus *Grav.*
 luridus *Er.*
 memnonius *Grav.*
 fumipennis *Say.*
 maculicollis *Mäkl.*
 nigricornis *Mann.*
 pallipes *Grav.*
 picipes *Er.*
 fimbriatus *Grav.*

Tachyporus *Grav.*
 jocosus *Say.*
 brunneus *Fabr.*
 nanus *Er.*
 affinis *Kirby.*
 acuductus *Kirby.*
 elegans *Horn.*

- californicus *Horn.*
chrysomelinus *Linn.*
maculipennis *Lec.*
- Conosoma** Kraatz.
crassum *Grav.*
basale *Er.*
littoreum *Linn.*
- Boletobius** Leach.
niger *Grav.*
trinitatus *Er.*
pygmaeus *Fabr.*
cincticollis *Say.*
cinctus *Grav.*
cingulatus *Mann.*
qæstor *Horn.*
longiceps *Lec.*
bimaculatus *Coup.*
intrusus *Horn.*
- Eryoporus** Kraatz.
rufescens *Lec.*
- Mycetoporus** Mann.
americanus *Er.*
tennis *Horn.*
- Acylophorus** Nordm.
pronus *Er.*
- Euryporus** *Er.*
puncticollis *Er.*
- Heterothops** Steph.
fuscus *Lec.*
- Habrocerus.**
Schwarzii *Horn.*
- Quedius** Steph.
fulgidus *Fabr.*
lævigatus *Gyll.*
capucinus *Grav.*
molochinus *Grav.*
- Creophilus** Kirby.
maxillosus *Linn.*
- Leistotrophus** Perty.
cingulatus *Grav.*
- Staphylinus** Linn.
capitatus *Bland.*
maculosus *Grav.*
mysticus *Er.*
exulans *Er.*
vulpinus *Nordm.*
fossator *Grav.*
tomentosus *Grav.*
badipes *Lec.*
cinnamopterus *Grav.*
- violaceus *Grav.*
varipes *Sachse.*
cesareus *Cederh.*
- Ocypus** Kirby.
ater *Grav.*
- Philonthus** Leach.
cyanipennis *Fabr.*
aeneus *Rossi.*
californicus *Mann.*
blandus *Grav.*
ventralis *Grav.*
scy alarius *Nordm.*
debilis *Grav.*
palliatu *Grav.*
lomatus *Er.*
micans *Grav.*
fulvipes *Fabr.*
brunneus *Grav.*
sordidus *Grav.*
aterrimus *Grav.*
apicalis *Say.*
sobrinnus *Er.*
terminalis *Lec.*
paederoides *Lec.*
- Gyrohypnus** Leach
fulgidus *Fabr.*
cephalus *Say.*
emmesus *Grav.*
obsidianus *Mels.*
hamatus *Say.*
obscurus *Er.*
- Leptacinus** *Er.*
flavipes *Lec.*
- Baptolinus** Kraatz.
macrocephalus *Nordm.*
flicornis *Payk.*
- Diochus** *Er.*
Schaumii *Kraatz.*
- Lathrobium** Grav.
grande *Lec.*
punctulatum *Lec.*
angulare *Lec.*
puncticolle *Kirby.*
simile *Lec.*
concolor *Lec.*
armatum *Say.*
nigrum *Lec.*
longiusculum *Grav.*
collare *Er.*
dimidiatum *Say.*
- Cryptobium** Mann.
bicolor *Grav.*
pallipes *Grav.*
latebricola *Nordm.*
cribratum *Lec.*
- Stilicis** Latr.
angularis *Er.*
dentatus *Say.*
biarmatus *Lec.*
- Scopæus** *Er.*
exiguus *Er.*
- Lithocharis** *Er.*
confluens *Say.*
- Sunius** Steph.
prolixus *Er.*
linearis *Er.*
binotatus *Say.*
longiusculus *Mann.*
- Pæderus** Grav.
riparius *Fabr.*
littorarius *Grav.*
- Pinophilus** Grav.
latipes *Er.*
- Stenus** Latr.
colon *Say.*
juno *Fabr.*
stygius *Say.*
femoratus *Say.*
flavicornis *Er.*
annularis *Er.*
arculus *Er.*
- Euæsthetus** Grav.
americanus *Er.*
- Oxyporus** Fabr.
rufipennis *Lec.*
femoralis *Grav.*
stygius *Say.*
vittatus *Grav.*
5-maculatus *Lec.*
lateralis *Grav.*
- Bledius** Leach.
fumatus *Lec.*
semiferrugineus *Lec.*
annularis *Lec.*
ruficornis *Lec.*
- Platystethus** Mann.
americanus *Er.*
- Oxytelus** Grav.
rugosus *Grav.*
fuscipennis *Mann.*
sculptus *Grav.*
pennsylvanicus *Er.*
- Trogophloeus** Mann.
4-punctatus *Say.*

s Latr.
laris Er.
atus Say.
natus Lec.

us Er.
us Er.

haris Er.
us Say.

Steph.
us Er.
is Er.
atus Say.
usculus Mann.

us Grav.
us Fabr.
arius Grav.

ilus Grav.
s Er.

Latr.
Say.

Fabr.
us Say.
atus Say.
arnis Er.
aris Er.
s Er.

etus Grav.
anus Er.

us Fabr.
nis Lec.
lis Grav.
is Say.
is Grav.
latus Lec.
is Grav.

Leach.
s Lec.
rugineus Lec.
is Lec.
is Lec.

thus Mann.
nus Er.

Grav.
Grav.
nis Mann.
Grav.
vanicus Er.

ocus Mann.
tus Say.

Coprophilus.
striatus Fabr.

Geodromicus Redt.
caesus Er.
brunneus Say.

Lesteva Latr.
pallipes Lec.

Acidota Steph.
oreната Fabr.
quadrata Zetter.
subcarinata Er.

Olophrum Er.
obtectum Er.
rotundicollis Sahlb.

Lathrimaeum Er.
sordidum Er.

Adranes Lec.
Lecontei Brend.

Ceophyllus Lec.
monilis Lec.

Ctenistes Reich.
piceus Lec.

Tyrus Aube.
humeralis Aube.

Pselaphus Hbst.
Erichsonii Lec.
longiclavus Lec.

Necrophorus Fab.
marginata Fab.
obscura Kirby.
Sayi Lap.
Melsheimeri Kirby.
pustulata Hensch.
americana Oliv.
orbicollis Say.
tomentosa Web.
vespilloides Hb.
hebes Kirby.
Hallii Kirby.

Silpha Linn.
surinamensis Fab.
lapponica Hb.

Trigonodemus Lec.
striatus Lec.

Omalius Grav.
plagiatum Mann.

Pycnoglypta
lurida Gyll.
convexa Ulk.

Anthobium Leach.
pothos Mann.
protectum Lec.

Protinus Latr.
atomarius Er.

Megarthus Steph.
americanus Sachse.
sinuaticollis Lac.

PSELAPHIDÆ.

Tychus Leach.
longipalpus Lec.

Bryaxis Leach.
conjuncta Lec.
perforata Brend.
illinoisensis Brend.
propinqua Lec.
rubicunda Aube.

Decarthron Brend.
abnorme Lec.
formiceti Lec.

Arthmius Lec.
globicollis Lec.

SILPHIDÆ.

trituberculata Kirby.
noveboracensis Forst.
inæqualis Fab.
ramosa Say.
americana Linn.

Necrophilus Latr.
subterraneus Dahl.

Prionocheata.
opaca Say.

Ptomaphagus Ill.
pusio Lec.

Siagonium Kirby.
punctatum Lec.

Eleusis Lap.
nigrellus Lec.

Glyptoma Er.
costale Er.

Pseudopsis Newm.
columbica Fr.

Olisthærus.
substriatus Gyll.

Micropeplus Latr.
costipennis Müll.

Batrisus Aube.
globosus Lec.
nigricans Lec.
lineaticollis Aube.

Rhexius Lec.
insculptus Lec.

Trimium Aube.
convexulum Lec.

Euplectus Leach.
confluens Lec.
interruptus Lec.
integer Lec.

Choleva.
clavicornis Lec.
basillaris Say.
terminans Lec.

Catopomorphus Aubé.
parasitus Lec.

Colon Hb.
Hubbardi Horn.

Anisotoma Er.
punctostriatus Kirby.
collaris Lec.
obsoleta Mels.

Colenis Er.
impunctata Lec.

Liodes Er.
globosa Lec.
polita Lec.

Brathinus Lec.

Scydmanus Latr.
fossiger Lec.
capillosulus Lec.

Rypobius Lec.
marinus Lec.

Orthoperus Steph.
glaber Lec.
scutellaris Lec.

Scaphidium Oliv.
quadriguttatum Say.

Scaphium Kirby.
castanipes Kirby.

Stephostethus Lec.
liratus Lec.

Lathridius Hbst.
minuta Linn.
ruficollis Msh.

Dermestes Linn.
marmoratus Say.
nubilus Say.
talpinus Mann.
pulcher Lec.
lardarius Linn.
maculatus Deg.
caninus Germ.

basalis Lec.

Agathidium Ill.
oniscoides Beaur.
exiguum Mels.
revolvens Lec.

BRATHINIDÆ

nitidus Lec.

SCYDMÆNIDÆ.

basalis Lec.
rasus Lec.

CORYLOPHIDÆ.

Corylophus Steph.
marginicollis Lec.

Sericoderus Steph.
flavidus Lec.

SCAPHIDIIDÆ.

Baeocera Er.
apicalis Lec.

Scaphisoma Leach.
convexum Say.

DERODONTIDÆ.

Derodontus Lec.
maculatus Mels.

LATRIDIIDÆ.

Corticaria Steph.
grossus Lec.
obtusus Lec.
deletæ Menn.
rugulosus Lec.

DERMESTIDÆ.

Byturus Latr.
unicolor Say.

Attagenus Latr.
pellio Linn.
megatoma Fab.

Primegatoma Latr.
cylindrica Kirby.

pollitum Lec.

Clambus Fisch.
puberulus Lec.
gibbulus Lec.

varicornis Lec.

bicolor Lec.
fatus Lec.

Sacium Lec.
obscurum Lec.
fasciatum Say.

Toxidium Lec.
gammaroides Lec.

americanus Mannh.
cavicollis Lec.
pumilus Mels.
pictus Lec.

Trogoderma Latr.
ornata Say.

Anthrenus Geoff.
varius Fab.
muscorum Linn.

Orphilus Er.
ater Er.

ENDOMYCHLÆ.

Lycoperdina Latr.
ferruginea Lec.

Mycetina Muis.
perpulchra Newm.
testacea Zeigl.
vittata Fab.

Epipocus Germ.
cinctus Lec.

Endomychus Hellw.
biguttatus Say.

Rhanis Lec.
unicolor Ziegl.

Phymaphora Newm.
pulchella Newm.

Mycetæa Steph.
hirta Msh.

MYCETOPHAGIDÆ.

Mycetophagus Hellw.
punctatus Say.
flexuosus Say.
obsoletus Mels.
bipustulatus Mels.
pluripunctatus Lec.

Triphyllus Dej.
humeralis Kirby.

Litargus Er.
tetraspilatus Lec.
6-punctatus Say.

Typhœa Curt.
fumata Linn.

SPHINDIDÆ.

Sphindus Chev.
americanus Lec.

Eurysphindus Lec.
hirtus Lec.

CIOIDÆ.

Cis Latr.
creberrimus Mell.
fuscipes Mell.

Ennearthron Mell.
Mellyi Mell.

Ceracis Mell.
Sallei Mell.

EROTYLIDÆ.

Languria Latr.
Mozardi Latr.
gracilis Newm.
inornata Rand.

heros Say.

pulchra Say.
dimidiata Lec.

Hypodacne Lec.
punctata Lec.

Cyrtotriplax Cr.
humeralis Fab.
unicolor Say.

Dacne Latr.
4-maculata Say.

Ischyryus Lec.
4-punctatus Oliv.

Triplax Hb.
thoracica Say.
flavicollis Lec.

Megalodacne Cr.
fasciata Fab.

Mycotretus Lec.
sanguinipennis Say.

ATOMARIIDÆ.

Antherophagus Latr.
ochraceus Mels.
convexus Lec.

Atomaria Steph.
testacea Zimm.
ochracea Zimm.
ephippiata Zimm.

Silvanus Latr.
advona Walll.
surinamensis Linn.
bidentatus Fabr.
planatus Germ.

Cryptophagus Gyll.
cellaris Scop.
crinitus Zimm.
concolor Kirby.
humeralis Kirby.

Ephistemus Steph.
apicalis Lec.

Nausibius Redt.
dentatus Msh.

Paramecosoma Curt.
serrata Gyll.

Telmatophilus Heer.
americanus Lec.

Telephanus Er.
velox Hald.

Tomarus Lec.
pulchellus Lec.

Diplocoelus Guer.
brunneus Lec.

CUCUJIDÆ.

Catogenus Westw.
rufus *Fabr.*

Cucujus Fabr.
clavipes *Fabr.*
punicus *Mann.*

Pediacus Schuck.
fuscus *Er.*

depressus *Hb.*

Læmophilæus Lap.
biguttatus *Say.*
fasciatus *Mels.*
testaceus *Fab.*
punctatus *Lec.*
adustus *Lec.*

Dendrophagus Schon.
glaber *Lec.*

Uliota Latr.
dubius *Fab.*

BITOMIDÆ.

Bitoma Hb.
striatus *Mels.*

COLYDIIDÆ.

Synchytodes Cr.
quadriguttata *Say.*

Synchita Hellw.
granulata *Say.*
fuliginosa *Mels.*

Cicones Curt.
marginalis *Mels.*

Colydium Fabr.
lineola *Say.*

Bothrideres Er.
geminatus *Say.*

Endectus Lec.
hæmatodes *Fab.*
reflexus *Say.*

Philothermus Aube.
glabriculus *Lec.*

Cerylon Latr.
castaneum *Say.*
unicolor *Ziegl.*

RHYSSODIDÆ.

Rhyssodes Dalm.
exaratus *Ill.*

Clinidium Kirby.
sculptile *Newm.*

MONOTOMIDÆ.

Bactridium Lec.
ephippigerum *Guer.*

striatum *Lec.*

Monotoma Dej.
parallela *Lec.*

TROGOSITIDÆ.

Alindria Er.
cylindrica *Serv.*

Tenebrioides Pall.
mauritanica *Linn.*
nitida *Horn.*
corticalis *Mels.*
intermedia *Horn.*
dubia *Horn.*

collaris *Sturm.*
marginata *Beauv.*
castanea *Mels.*
laticollis *Horn.*
bimaculata *Mels.*

Grynocharis Th.
4-lineata *Mels.*

Calitys Thoms.
scabra *Thunb.*
silphides *Newm.*

Ostoma Laich.
ferruginea *Linn.*

Thymalus Duft.
fulgidus *Er.*

NITIDULIDÆ.

Cercus Latr.
abdominalis *Er.*
pennatus *Murr.*

Brachypterus Er.
urticæ *Fab.*

Colastus Er.
semitecta *Say.*
unicolor *Say.*
truncatus *Rand.*

Conotelus Er.
obscurus *Er.*

Carpophilus Steph.
niger *Say.*
hemipterus *Linn.*
brachypterus *Say.*
discoideus *Lec.*

Epuræa Er.
estiva Linn.
ambigua Mann.
labilis Er.
boreella Er.
truncatella Mann.
rufa Say.

Melidula Fabr.
pustulata Linn.
rufipes Linn.
siczac Say.
uniguttata Mels.

Prometopia Er.
6-maculata Say.

Lobiopa Er.
undulata Say.

Omosita Er.
colon Linn.
discoidea Fab.

Phenolia Er.
grossa Fab.

Stelidota Er.
geminata Say.
8-maculata Say.

Pocadius Er.
helvolus Er.

Amphicrossus Er.
ciliatus Ol.

Cybocephalus Er.
nigritulus Lec.

Cryptarcha Shuok.
ampla Er.

Ips Fabr.
fasciatus Oliv.
obtusus Say.
sanguinolentus Oliv.
confuens Say.
vittatus Say.
4-signatus Say.
bipunctatus Say.

Rhizophagus Hb.
dimidiatus Mann.
remotus Lec.
bipunctatus Say.

PHALACRIDÆ.

Phalacrus Payk.
politus Mels.

Olibrus Er.
vittatus Lec.
bicolor Gyll.
striatulus Lec.

pallipes Say.
consimilis Msh.
nitidus Mels.

COCCINELLIDÆ.

Epilachna Redt.
borealis Fabr.

Megilla Muls.
maculata DeG.

Hippodamia Cher.
5-signata Kirby.
Lecontei Muls.
glacialis Fab.
convergens Guer.
13-punctata Linn.
parenthesis Say.

Anisosticta Chev.
strigata Th.
episcopalis Kirby.

Coccinella Linn.
trifasciata Linn.
9-notata Hb.
5-notata Kirby.
monticola Muls.
tricuspis Kirby.
ophthalmica Auls.
incarnata Kirby.
transverso-guttata Feld.
lacustris Lec.
cardisce Rand.
munda Say.

tridens Kirby.

Cycloneda Cr.
sanguinea Linn.

Adalia Muls.
frigida Schn.
bipunctata Linn.

Harmonia Muls.
picta Rand.

Anisocalia Cr.
14-guttata Linn.
similis Fand.
12-maculata Gebl.

Anatis Muls.
15-punctata Oliv.
subvittata Muls.
canadensis Prov.

Mysia Muls.
pullata Say.

Psyllobora Chev.
20-maculata Say.

Chilocorus Leach.
bivulnerus Muls.

Brachyacantha Muls.
lepada Muls.
dentipes Fab.
ursina Fab.
10-pustulata Mels.

Hyperaspis Chev.
signata Oliv.
elegans Muls.
proba Say.
undulata Say.
maculifera Muls.

Scymnus Kug.
ornatus Lec.
flavifrons Mels.
terminatus Say.
punctatus Mels.
hemorrhous Lec.
collaris Mels.
caudalis Lec.
puncticollis Lec.
tenebrosus Muls.
lacustris Lec.
punctum Lec.

Coccidula Kug.
lepada Lec.

BYRRHIDÆ.

Nosodendron Latr.
unicolor Say.

Cytilus Er.
sericeus Forst.
trivittatus Mels.

Byrrhus Fab.
americanus Lec.
cyclophorus Kirby.
geminatus Lec.
Pettitii Horn.
Kirbyi Lec.
concolor Kirby.

Syncalypta Steph.
strigosa Mels.

Limnichus Latr.
punctatus Lec.

PSEPHENIDÆ.

Psephenus Hald.
Lecontei Lec.

PARNIDÆ.

Helichus Er.
lithophilus Germ.

fastigiatus Say.
striatus Lec.

ELMIDÆ.

Elmis Latr.
vittatus Mels.
4-notatus Say.
fastiditus Lec.

Stenelmis Duf.
crenatus Say.
bicarinatus Lec.

Macronychus Müll.
glabratus Say.

HETERO CERIDÆ.

Heterocerus Fabr.
ventralis Mels.

auromicans Kies.
substriatus Kies.

mollinus Kies.

HISTERIDÆ.

Hololepta Payk.
fossularis Say.

cylindricus Payk.
attenuatus Lec.
gracilis Lec.

conformis Lec.
scrupularis Lec.
delectus Lec.
sphaeroides Lec.
ferrugineus Mars.
fraternus Say.
estriatus Lec.
patruelis Lec.

Hister Linn.
planipes Lec.
Harrisii Kby.
merdarius Hoffm.
interruptus Beauv.
marginicolis Lec.
cognatus Lec.
foedatus Lec.
abbreviatus Fab.
civilis Lec.
depurator Say.
furtivus Lec.
bimaculatus Linn.
sedecimstriatus Say.
americanus Payk.
perplexus Lec.
subrotundus Say.
carolinus Payk.
Lecontei Mars.
parallelus Say.
coarctatus Lec.

Epiurus Er.
regularis Beauv.

Tribalus Erichs.
americanus Lec.

Paromalus Erichs.
sequalis Say.
bistriatus Er.
seminulum Er.

Dendrophilus Leach.
punctulatus Say.

Saprinus Leach.
lugens Er.
pennsylvanicus Payk.
oregonensis Lec.
distinguendus Mars.
assimilis Payk.

Teretrius Erichs.
americanus Lec.

Plegaderus Erichs.
transversus Say.
Sayi Mars.

Bacanius Lec.
punctiformis Lec.

Acritus Lec.
exiguus Erichs.

Aeletes Horn.
politus Lec.

LUCANIDÆ.

Lucanus Linn.
dama Thunb.
placidus Say.
Dorcus McLeay.
brevis Say.

parallellus Say.
Platycerus Geoffr.
quereus Weber.
depressus Lec.

Ceruchus McLeay.
piceus Weber.
Passalus Fabr.
cornutus Fabr.

SCARABÆIDÆ.

Canthon Hoffm.
nigricornis Say.
hudsonias Forst.
chalcites Hald.

Bolboceras Kirby.
lazarus Fabr.

Odontæus Klug.
filicornis Say.
cornigerus Mels.

Diplotaxis Kirby.
sordida Say.
liberta Germ.
brevicollis Lec.
tristis Kirby.

Coryis Geoffr.
catolina Linn.
maglypticus Say.

Phanæus McLeay.
carlifex Linn.

Geotrypes Latr.
splendidus Fab.
semiopacus Jek.
Egeriei Germ.
Blackburnii Fab.
excrementi Say.
chalybæus Lec.

Lachnosterna Hope.
fusca Fröhl.
cognata Burm.
fraterna Harris.
ilicis Knoch.
subtonsa Lec.
hirticula Knoch.
hirsuta Knoch.
balia Say.
villifrons Lec.
tristis Fabr.

Ontophagus Latr.
Hecate Panz.
Janus Panz.
canadensis Fabr.
scabricollis Kirby.
ovatus Linn.
pennsylvanicus Har.

Nicagus Lec.
obscurus Lec.

Trox Fabr.
punctatus Germ.
Sonoræ Lec.
sordidus Lec.
unistriatus Beauv.
erinaceus Lec.
terrestris Say.
capillaris Say.
scaber Linn.
aequalis Say.

Polyphylla Lac.
decemlineata Say.
variolosa Hentz.

Anomala Koeppel.
varians Fabr.

Strigoderma Burm.
arboricola Fabr.

Pelidnota McLeay.
punctata Linn.

Cotalpa Burm.
lanigera Linn.

Ligyris Burm.
gibbosus De Geer.
relictus Say.

Aphonus Lec.
tridentatus Say.
frater Lec.

Xyloryctes Hope.
satyrus Fabr.

Euphoria Burm.
inda Linn.
fulgida Fabr.

Aphodius Ill.
fossor Linn.
hamatus Say.
occidentalis Horn.
fimicaria Linn.
ruricola Mels.
foetidus Fab.
perovialis Lec.
gracilis Linn.
vittatus Say.
inquinatus Eb.
stercorosus Mels.
consortaneus Lec.
terminalis Say.
bicolor Say.
rubripennis Horn.
oblongus Say.

Dialytes Harold.
truncatus Mels.
striatulus Say.

Atractus Harold.
gracilis Mels.
stratorator Fab.

Agathia Latr.
conferta Horn.

Hoplia Ill.
modesta Hald.
trifasciata Say.
mucorea Germ.

Dichelonycha Kirby.
elongata Schön.
subvittata Lec.
testacea Kirby.
Backii Kirby.
albicollis Burm.

Serica McLeay.
vespertina Schön.
iricolor Say.
sericea Ill.
trocifformis Burm.

Macroductylus Latr.
subspinosus Fabr.

Cremastochilus Kn.
Harrisii Kirby.

Osmoderma Lep.
eremicola Knoch.

Chalcophora Sol.
virginiensis Dr.
lacustris Lec.
liberta Germ.
fortis Lec.
campestris Say.

Dicerca Esch.
prolongata Lec.
divaricata Say.
pugionata Germ.
obscura Fab.
lurida Fab.
spretata Lap.
asperata Lap.
tenebrosa Kirby.
chrysea Mels.
manca Lec.
tuberculata Lap.
lugubris Lec.
punctulata Schon.

Poecilonota Esch.
cyanipes Say.

Buprestis Linn.
lineata Fab.
consularis Gory.
Nuttalli Kirby.
maculiventris Say.
rusticorum Kirby.

scabra Beauv.

Gnorimus Lep.
maculosus Knoch.

BUPRESTIDÆ.

fasciata Fabr.
striata Fabr.

Cinyra Lap.
gracilipes (Mels.).

Melanophila Esch.
longipes Say.
Drummondi Kirby.
fulvoguttata Harr.
seveola Mels.

Anthaxia Esch.
inornata Rand.
cyanella Gory.
viridicornis Say.
viridifrons Gory.

Chrysobothris Esch.
femorata Lec.
4-imprensa Gory.
Lesoueri Gory.
obscura Lec.
dentipes Germ.
trinervia Kirby.
scabripennis Lap.
6-signata Say.
chrysoela Ill.
Harrisii Hentz.
proxima Kirby.

THROSCIDÆ.

Throscus Latr.
constrictor Say.
alienus Bonv.

punctatus Bonv.
Chevolati Bonv.
parvulus Lec.

Trichius Fabr.
piger Fabr.
bibens Fabr.
affinis Gory.

Eupristocerus Deyr.
cogitans Web.

Agrilus Sol.
arcuatus Say.
ruficollis Fab.
fulgens Lec.
obliquus Lec.
otiosus Say.
bilineatus Web.
fallax Say.
interruptus Lec.
subcinctus Gory.
acutipennis Mann.
torpidus Lec.
plumbeus Lec.
politus Say.
egenus Gory.
cephalicus Lec.
viridifrons Lec.
puncticepes Lec.
lacustris Lec.

Taphrocerus Sol.
gracilis Say.

Brachys Sol.
ovata Web.
ærosa Mels.
aeruginosa Gory.

Drapetes Redt.
4-pustulatus Bonv.
extriatus Say.

ELATERIDÆ.

Tharops Lap.
obliquus Say.

Deltometopus Bv.
amoenicornis Say.

Dromæolus Ksw.
cylindricollis Say.

Fornax Lap.
calceatus Say.
orchesides Newm.

Entomophthalmus Bv.
rufiolus Lec.

Microrrhagus Esch.
humeralis Say.
imperfectus Lec.
pectinatus Lec.
triangularis Say.

Nematodes Lat.
atropos Say.
penetrans Lec.

Epiphanis Esch.
cornutus Esch.

Hylochus Latr.
nicricornis Say.

Adelocera Latr.
avita Say.
impressicollis Say.
discoidea Web.
aurorata Say.
maculata Lec.

Fabr.
Fabr.
Fabr.
Gory.

rorulenta *Lec.*
marmorata *Fabr.*
obtecta *Say.*
profusa *Cand.*
brevicornis *Lec.*

Alaus Esch.

lusciosus *Hop.*
oculatus *Linn.*
myops *Fabr.*

Cardiophorus Esch.

amicus *Mels.*
cardisco *Say.*
convexus *Lec.*
gagates *Er.*
robustus *Lec.*

Cryptohypnus Esch.

planatus *Lec.*
grandicollis *Lec.*
abbreviatus *Say.*
bicolor *Esch.*
tumescens *Lec.*
pulchellus *Linn.*
pectoralis *Say.*

Oedostethus Lec.

femoralis *Lec.*

Elater Linn.

nigricollis *Hbst.*
linteus *Say.*
discoideus *Fabr.*
semicinctus *Rand.*
vitosus *Lec.*
apicatus *Say.*
phoenicopterus *Germ.*
xanthomus *Germ.*
luctuosus *Lec.*
impolitus *Mels.*
hepaticus *Mels.*
nigricans *Germ.*
carbonicolor *Mann.*
pullus *Germ.*
mixtus *Hbst.*
miniipennis *Lec.*
sanguinipennis *Say.*
rubricus *Say.*
obliquus *Say.*
areolatus *Say.*
protervus *Lec.*

Drasterius Esch.

dorsalis *Say.*
scabillis *Lec.*

Megapenthes Cand.

stigmaeus *Lec.*

Monocrepidius Esch.

auritus *Hbst.*

Ludius Latr.

abruptus *Say.*
attenuatus *Say.*

Agriotes Esch.

mancus *Say.*
pubescens *Mels.*
fucosus *Lec.*
stabilis *Lec.*
limosus *Lec.*

Dolopius Esch.

macer *Lec.*
lateralis *Esch.*

Betarmon Kraatz.

bigeminatus *Rand.*

Melanotus Esch.

decumanus *Er.*
depressus *Mels.*
trapezoideus *Lec.*
Leonardi *Lec.*
scrobicollis *Lec.*
castanipes *Payk.*
fissilis *Say.*
communis *Gyll.*
parumpunctatus *Mels.*
verberans *Lec.*
pertinax *Say.*
sagittarius *Lec.*
similis *Kirby.*

Limonius Esch.

auripilis *Say.*
aurifer *Lec.*
stigma *Hbst.*
griseus *Beauv.*
confusus *Lec.*
plebejus *Lec.*
quercinus *Say.*
basillaris *Say.*
propexus *Cand.*
anceps *Lec.*
agonus *Say.*

Campylus Fischer.

denticornis *Kirby.*

Pityobius Lec.

anguinus *Lec.*

Athous Esch.

Brightwelli *Kirby.*
acanthus *Say.*
cucullatus *Say.*
scapularis *Say.*

ruffrons *Rand.*
discalceatus *Lec.*
bipunctatus *Prov.*
affinis *Coup.*

Oestodes Lec.

tenuicollis *Rand.*

Paranomus Ksw.

costalis *Payk.*
pictus *Cand.*

Sericosomus Esch.

fusiformis *Lec.*
incongruus *Lec.*
viridanus *Say.*
silaceus *Say.*
humeralis *Motsch.*

Oxygonus Lec.

obesus *Say.*

Corymbites Latr.

virens *Schr.*
vernalis *Hentz.*
tesselatus *Linn.*
replendens *Esch.*
cylindriciformis *Hbst.*
atropurpureus *Mels.*
pyrrhos *Hbst.*
vulneratus *Lec.*
spinosus *Lec.*
tarsalis *Mels.*
carcinus *Esch.*
insidiosus *Lec.*
falsificus *Lec.*
appressus *Rand.*
sulcicollis *Say.*
morulus *Lec.*
sagitticollis *Esch.*
medianus *Germ.*
triundulatus *Rand.*
hamatus *Say.*
propola *Lec.*
hieroglyphicus *Say.*
cruciatus *Linn.*
Suckleyi *Lec.*
aeripennis *Kirby.*
splendens *Ziegl.*
metallicus *Payk.*
inflatus *Say.*
athoides *Lec.*
rotundicollis *Say.*

Asaphes Kirby.

memnonius *Hbst.*
decoloratus *Say.*
bilobatus *Say.*
brevicollis *Lec.*

Cebrio Fabr.

bicolor *Fabr.*

cerus Deyr.
Web.

Sol.
Say.
Fab.
Lec.
Lec.
Say.
Web.

ty.
tus Lec.
us Gory.
nis Mann.
Lec.
s Lec.
ay.
Gory.
s Lec.
s Lec.
es Lec.
Lec.

us Sol.
ay.
bl.
b.
s.
Gory.

edt.
s Bonv.
ay.

sch.
sch.

Latr.
Say.

atr.

s Say.
eb.
y.
s

RHIPI CERIDÆ.

Sandalus Knoch.
niger Knoch.

DASOYLLIDÆ.

Eurypogon Motsch.
niger Mels.

obscurus Guér.

thoracica Guér.
maculicollis Horn.

Ectopria Lec.
nervosa Mels.

Hemicyphon Lec.
ruficollis Say.

Scirtes Illiger.
tibialis Guér.

Cyphon Fabr.
variabilis Thunb.
Padi Linn.

Prionocyphon Redt.
discoideus Say.

Eucinetus Germar.
oviformis Lec.
terminalis Lec.

Helodes Latr.
pulchella Guér.

LAMPYRIDÆ.

Dictyoptera Latr.
perfaeta Say.

crenatus Germ.
fraternus Rand.
humeralis Fabr.
trilineatus Mels.
modestus Say.
mollis Lec.
floralis Mels.
canaliculatus Say.

lacustris Lec.
fenestralis Mels.
nigricans Say.
angulatus Say.
borealis Rand.
lucifer Mels.
consanguineus Lec.
ardens Lec.
pyralis Linn.
marginellus Lec.
scintillans Say.

Calopteron Guér.
apicalis Lec.
reticulatum Fabr.

Caenia Newm.
dimidiata Fabr.
basalis Newm.

Calyptocephalus Gray.
bifarius Say.

Photuris Lec.
Pennsylvanica DeG.

Eros Newm.
simplicipes Mann.
coccinatus Say.
mundus Say.
thoracicus Rand.
sculptilis Say.
oblitus Newman.

Lucidota Lap.
atra Fabr.

Photinus Lap.
corruscus Linn.

Phengodus Hoffm.
plumosa Oliv.

TELEPHORIDÆ.

Chauliognathus Hentz.
americanus Forst.
marginatus Fabr.

simplex Couper.
mandibularis Kirby.

Podabrus Westw.
tricoctatus Say.
basilaris Say.
flavicollis Lec.
punctulatus Lec.
modestus Say.
diadema Fabr.
frater Lec.
rugosulus Lec.
poricollis Lec.
Fattoni Lec.
piniphilus Esch.
punctatus Lec.
puncticollis Kirby.
laevicollis Kirby.

Telephorus Schäffer.
excavatus Lec.
carolinus Fabr.
angulatus Say.
lineola Fabr.
rectus Mels.
imbecillus Lec.
flavipes Lec.
luteicollis Germ.
scitulus Say.
nigriceps Lec.
fraxini Say.
nigritulus Lec.
rotundicollis Say.
Curtisii Kirby.
grandicollis Lec.

tuberculatus Lec.
marginellus Lec.
oregonus Lec.
bilineatus Say.
armiger Couper.

Silis Charp.
percomis Say.
luteicollis Germ.

Trypherus Lec.
latipennis Germ.

Malthinus Latr.
occipitalis Lec.

Malthodes Kiesenw.
concauus Lec.
transversus Lec.

MALACHIDÆ.

Collops Er.
tricolor *Say.*
cribrosus *Lec.*
4-maculatus *Fab.*
vittatus *Say.*

Anthocomus Er.
Erichsoni *Lec.*

Cymatodera Gray.
inornata *Say.*
bicolor *Say.*

Priocera Kirby.
castanea *Newm.*

Trichodes.
Nuttalli *Kirby.*
apivorus *Germ.*

Clerus.
nigripes *Say.*
nigrifrons *Say.*
ichneumoneus *Fabr.*
sphegeus *Fabr.*
thoracicus *Oliv.*
trifasciatus *Say.*
dubius *Fab.*

flavilabris *Say.*

Pseudebæus Horn.
oblitus *Lec.*

Attalus Er.
terminalis *Er.*

OLERIDÆ.

undulatus *Say.*
nubilus *Klug.*
sanguineus *Say.*

Hydnocera Newm.
unifasciata *Say.*
humeralis *Say.*
cyanescens *Lec.*
pallipennis *Say.*
verticalis *Say.*
longicollis *Ziegl.*
curtipennis *Newm.*

Phyllobæenus Spin.
dislocatus *Say.*

Ichnea Lap.
laticornis *Say.*

morulus *Lec.*
melanopterus *Er.*
Pettiti *Horn.*

Melyris Fabr.
cribratus *Lec.*
flavipes *Lec.*

Chariessa Perty.
pilosa *Forst.*
onusta *Say.*

Cregya Lec.
oculata *Say.*

Orthopleura Spin.
damicornis *Fabr.*

Laricobius Rosenhauer.
rubidus *Lec.*

Corynetes Hbst.
rufipes *Fabr.*
violaceus *Linn.*

LYMEXYLIDÆ.

Lymexylon Fabr.
sericeum *Harr.*

Hylecoetus Latr.
lugubris *Say.*

CUPESIDÆ.

Cupes Fabr.

capitata *Fabr.*

concolor *Westw.*

PTINIDÆ.

Ptinus Linn.
fur *Linn.*
brunneus *Dufsch.*

alternatus *Lec.*

foveatus *Kirby.*

Sitodrepa Thoms.
panicea *Linn.*

Anobium Fabr.
notatum *Say.*

Eucrada Lec.
humeralis *Mels.*

Trichodesma Lec.
gibbosa *Say.*

Trypopytis Redt.
sericeus *Say.*

Ernobius Thoms.
mollis *Linn.*
tenuicornis *Lec.*

Nicobium Lec.
hirtum *Ill.*

Petalium Lec.
bistriatum *Say.*

Kestobium Motsch.
tesselatum *Fabr.*

Hadrobregmus Thoms.
errans *Mels.*
carinatus *Say.*
linearis *Lec.*
pumilio *Lec.*

Eupactus Lec.
nitidus *Lec.*

Oligomerus Redt.
sericans *Mels.*

Xyletinus Latr.
peltatus *Harr.*

- | | | |
|--|--|--|
| <i>fucatus Lec.</i> | <i>pallicornis Lec.</i> | Bostrychus Geoffr.
<i>bicornis Web.</i>
<i>armiger Lec.</i>
<i>truncaticollis Lec.</i> |
| Lasioderma Steph.
<i>serricornis Fabr.</i> | Caenocara Thoms.
<i>oculata Say.</i> | Amphicerus Lec.
<i>bicaudatus Say.</i> |
| Hemiptychus Lec.
<i>gravis Lec.</i>
<i>borealis Lec.</i>
<i>ventralis Lec.</i> | Ptilinus Geoffr.
<i>ruficornis Say.</i>
<i>thoracicus Rand.</i> | Dinoderus Steph.
<i>substriatus Payk.</i>
<i>porcatus Lec.</i>
<i>cribratus Lec.</i> |
| Protheca Lec.
<i>puberula Lec.</i> | Endecatomus Mellié.
<i>reticulatus Hbst.</i>
<i>rugosus Rand.</i> | |
| Dorcatoma Hbst.
<i>setulosum Lec.</i> | | |

SPONDYLIDÆ.

- | | |
|--|---|
| Parandra Latr.
<i>brunnea Fab.</i> | Spondylis Fab.
<i>upiformis Mann.</i> |
|--|---|

CERAMBYCIDÆ.

- | | | |
|--|---|--|
| Orthosoma Serv.
<i>brunneum Forst.</i> | Callidium Fab.
<i>antennatum Newm.</i>
<i>janthinum Lec.</i>
<i>violaceum Muls.</i> | Callimoxys Kraatz.
<i>sanguinicollis Oliv.</i>
<i>fuscipennis Lec.</i> |
| Prionus Geoffr.
<i>laticollis Drury.</i> | Gonocallus Lec.
<i>collaris Kirby.</i> | Molorchus Fab.
<i>bimaculatus Say.</i>
<i>mellitus Say.</i> |
| Tragosoma Serv.
<i>Harrisii Lec.</i> | Stromatium Serv.
<i>pubescens Hald.</i> | Ancylocera Serv.
<i>rusticorum Lec.</i> |
| Asemum Esch.
<i>moestum Hald.</i>
<i>atrum Esch.</i> | Chion Newm.
<i>cinctus Drury.</i>
<i>garganicus Fab.</i> | Purpuricenus Serv.
<i>humeralis Fab.</i> |
| Criocephalus Muls.
<i>agrestis Kirby.</i>
<i>obsoletus Rand.</i> | Eburia Serv.
<i>quadrigeminata Say.</i> | Batyle Thoms.
<i>ignicollis Say.</i>
<i>suturalis Say.</i> |
| Tetropium .
<i>cinnamopterum Kirby.</i> | Elaphidion Serv.
<i>atomarium Drury.</i>
<i>rufulum Hald.</i>
<i>mucronatum Fab.</i>
<i>incertum Newm.</i>
<i>villosum Fab.</i>
<i>parallelum Newm.</i>
<i>unicolor Rand.</i>
<i>notatum Er.</i> | Stenosphenus Hald.
<i>notatus Oliv.</i> |
| Dularius Thoms.
<i>brevilineus Say.</i> | Tylonotus Hald.
<i>bimaculatus Hald.</i> | Cyllene Newm.
<i>pictus Drury.</i>
<i>robiniaæ Forst.</i> |
| Rhopalopus Muls.
<i>sanguinicollis Horn.</i> | Heterachthes Newm.
<i>quadrimaculatus Newm.</i> | Glycobius Lec.
<i>speciosus Say.</i> |
| Hylotrupes Serv.
<i>bajulus Linn.</i>
<i>ligneus Fab.</i> | Obrium Serv.
<i>rubrum Newm.</i> | Calloides Lec.
<i>nobilis Say.</i> |
| Phymatodes Muls.
<i>variabilis Fab.</i>
<i>varius Fab.</i>
<i>amoenus Say.</i>
<i>dimidiatus Kirby.</i> | | Arhopalus Serv.
<i>fulminans Fab.</i> |
| Merium Kirby.
<i>proteus Kirby.</i> | | Clytus Laich.
<i>margenicollis Lap.</i>
<i>humatus Say.</i>
<i>longipes Kirby.</i> |

chus Geoffr.
is Web.
er Lec.
aticollis Lec.

erus Lec.
atus Say.

us Steph.
atus Payk.
us Lec.
us Lec.

ys Kraatz.
collis Oliv.
nis Lec.

s Fab.
atus Say.
Say.

a Serv.
m Lec.

us Serv.
s Fab.

oms.
Say.
Say.

us Hald.
iv.

wm.
ry.
rat.

eo.
ay.

co.

serv.
fab.

s Lap.
y.
by.

campestris Oliv.

Xylotrechus Chev.
oolonus Fab.
sagittatus Germ.
quadrinaculatus Hald.
undulatus Say.
fuscus Kirby.
annosus Say.

Neoclytus Thoms.
fuscus Fab.
cupraea Say.
muricatus Kirby.
erythrocephalus Fab.
longipes Kirby.

Clytanthus Thoms.
ruricola Oliv.

Cyrtophorus Lec.
verrucosus Oliv.

Eudercus Lec.
picipes Fab.

Atimia Hald.
confusa Say.

Desmocerus Serv.
palliatius Forst.

Necydalis Linn.
mollitus Say.

Eucyclops Newm.
coeruleus Say.

Rhagium.
lineatus Oliv.

Centrodera Lec.
decolorata Harr.

Toxotus Serv.
Schaumii Lec.
vittiger Rand.
cylindricollis Say.

Pachyta Serv.
monticola Rand.
liturata Kirby.
rugipennis Lec.

Anthophilax Lec.
viridis Lec.
malachiticus Hald.
attenuatus Hald.
alternatus Lec.

Plodes Lec.
coriacea Lec.

Acmaeops Lec.
bivittata Say.
proteus Kirby.
pratensis Laich.

Gaurotes Lec.
cyanipennis Say.

Bellamira Lec.
scalaris Say.

Strangalia Serv.
luteicornis Fab.
bicolor Swed.

Typocerus Lec.
badius Newm.
zebratus Fab.
velutinus Oliv.
lugubris Say.
sinuatus Newm.

Leptura Serv.
emarginata Fab.
propinqua Bland.
plebeja Rand.
subhamata Rand. ♂
lineola Say.
cruentata Hald.
chalybea Hald.
capitata Newm.
haematites Lec.
subargentata Kirby.
similis Kirby.
zebra Oliv.
impura Lec.
cordifera Oliv.
sexmaculata Linn.
nigrella Say.
carbonata Lec.
canadensis Fab.
erythroptera Kirby.
rubrica Say.
circumdata Oliv.
vagans Oliv.
sanguinea Lec.
chrysocoma Kirby.
nigrolineata Bland.
atrata Lec.
proxima Say.
biforis Newm.
octonotata Say.
pedalis Lec.
vittata Germ.
pubera Say.
ruficollis Say.
sphaericollis Say.
vibex Newm.
mutabilis Newm.
aspera Lec.
nitidipennis Prov.
montivagans Coup.

subperbescens Kirby.

Ipochus Lec.
fasciatus Lec.

Monilema Say.
annulatum Say.

Cyrtinus Lec.
pygmaeus Hald.

Psenocerus Lec.
supernotatus Say.
pini Oliv.

Monohannus Serv.
titillator Oliv.
minor Lec.
clamator Lec.
scutellatus Say.
oregonensis Lec.
confusor Kirby.
marmoratus Rand.
dentator Fab.

Dorcaschema Lec.
nigrum Say.

Goes Lec.
tigrinus DeG.
pulcher Hald.
debilis Lec.
oculatus Lec.

Acanthoderes Serv.
quadrigibbus Say.
decipiens Hald.

Leptostylus Lec.
aculifer Say.
biustus Lec.
commixtus Hald.
macula Say.

Liopus.
variegatus Hald.
alpha Say.
cinereus Lec.

Lepturges Bates.
signatus Lec.
querci Fitch.
facetus Say.
symmetricus Hald.

Hyperplatys Hald.
asperus Say.
maculatus Hald.

Urographis.
triangulifer Hald.
fasciatus DeG.

- Graphisurus.**
pusillus *Kb.*
- Acanthocinus** Steph.
obsoletus *Oliv.*
- Hoplosia** Muls.
nubila *Lec.*
- Pogonocherus** Serv.
penicellatus *Lec.*
mixtus *Hald.*
- Ecyrus** Lec.
dasycerus *Say.*
- Eupogonius** Lec.
tomentosus *Hald.*
vestitus *Say.*
subarmatus *Lec.*
- Oncideres** Serv.
cingulatus *Say.*
- Saperda** Fab.
obliqua *Say.*
calcarata *Say.*
candida *Fab.*
cretata *Newm.*
Fayi *Bland.*
vestita *Say.*
discoidea *Fab. ♀*
- Obera** Muls.
ruficollis *Fab.*
amabilis *Hald.*
bimaculata *Oliv.*
perspicillata *Hald.*
Schaumii *Lec.*
- Tetraopes** Serv.
cantariator *Drap.*
tetraophthalmus *Forst.*

BRUCHIDÆ.

- Bruchus** Linn. pisi *Linn.* fraterculus *Horn.*

CHRYSOMELIDÆ.

- Donacia** Fab.
Harrisii *Lec.*
lucida *Lac.*
palmata *Oliv.*
piscatrix *Lac.*
hirticollis *Kirby.*
magnifica *Lec.*
proxima *Kirby.*
distincta *Lec.*
subtilis *Kunze.*
confusa *Lec.*
torosa *Lec.*
emarginata *Kirby.*
cuprea *Kirby.*
femoralis *Kirby.*
flavipes *Kirby.*
Kirbyi *Lac.*
sequalis *Say.*
pallipes *Lac.*
- Harmonia.**
Melsheimeri *Lac.*
nigricornis *Kb.*
- Orsodachna** Latr.
tibralis *Kirby.*
atra *Ahr.*
Childreni *Kirby.*
vittata *Say.*
- Zeugophora** Kunze.
varians *Gr.*
- Syneta** Esch.
ferruginea *Germ.*
tripla *Say.*
- Lema** Fabr.
Solani *Fab.*
trilineata *Oliv.*
melanocephala *Say.*
- Crioceris** Geoff.
asparagi *Linn.*
- Anomoea** Lac.
lati-clavia *Forst.*
- Babia** Chev.
4-guttata *Oliv.*
- Coscinoptera** Lac.
dominicana *Fab.*
vittigera *Lec.*
- Chlamys** Knoch.
plicata *Fabr.*
polycocca *Lac.*
- Exema** Lac.
dispar *Lec.*
- Monachus** Chev.
saponatus *Fab.*
- Diachus** Lec.
auratus *Fabr.*
catarius *Suffr.*
- Cryptocephalus** Geoff.
congestus *Fab.*
formosus *Mels.*
- mammifer *Newm.*
sellatus *Suffr.*
luteipennis *Mels.*
lituratus *Fab.*
4-maculatus *Say.*
venustus *Fab.*
calidus *Suffr.*
Schreibersii *Suffr.*
guttulatus *Oliv.*
cribripennis *Lec.*
mutabilis *Mels.*
notatus *Fab.*
quadriplex *Newm.*
catarius *Suffr.*
auratus *Fab.*
- Pachybrachys** Chev.
morosus *Hald.*
viduatus *Fab.*
carbonarius *Hald.*
subfasciatus *Hald.*
luridus *Fab.*
atomarius *Mels.*
tridens *Mels.*
litigiosus *Suffr.*
othonus *Say.*
- Adoxus** Kirby.
vitis *Linn.*
- Xanthonia** Baly.
10-notata *Say.*
villosula *Mels.*
Stevensii *Baly.*
- Sceledonta** West.
pubescens *Mels.*

- marcessita *Germ.*
curtipennis *Mels.*
- Glyptocelis** Lec.
hirtus *Oliv.*
- Chrysochus** Chev.
auratus *Fab.*
cobaltinus *Lec.*
- Tymnes** Chap.
tricolor *Fab.*
picipes *Oliv.*
- Paria** Lec.
6-notata *Say.*
4-notata *Say.*
aterrima *Oliv.*
laevicollis *Cr.*
- Metachroma** Chev.
dubiosa *Say.*
quercata *Fab.*
cupraea *Prov.*
- Colaspis** Fab.
brunnea *Fab.*
flavida *Say.*
costipennis *Dej.*
praetexta *Say.*
tristis *Oliv.*
convexa *Say.*
puncticollis *Say.*
- Chrysomela** Linn.
olivocollis *Kirby.*
10-lineata *Say.*
exclamationis *Fab.*
conjuncta *Rog.*
suturalis *Fab.*
similis *Rog.*
elegans *Oliv.*
lunata *Fabr.*
multiguttis *Stal.*
philadelphica *Linn.*
Spireae *Say.*
multipunctata *Say.*
Bigsbyana *Kirby.*
rufipes *DeGeer.*
- Gastroidea**.
polygona *Linn.*
dissimilis *Say.*
cyanea *Mels.*
fiformosa *Say.*
- Entomocelis** Chev.
adonidis *Fabr.*
Raphani *Fabr.*
- Prasocuris** Latr.
Phellandrii *Linn.*
- varipes *Lec.*
obliquata *Lec.*
- Gonioctena** Chev.
arctica *Mann.*
pallida *Linn.*
rufipes *Lec.*
- Phylloctena** Kirby.
vulgatissima *Linn.*
vitelina *Linn.*
- Plagiodera** Chev.
lapponica *Linn.*
tremulae *Fabr.*
scripta *Fabr.*
cochleariae *Gyll.*
oviformis *Lec.*
viridis *Mels.*
- Cerotoma** Chev.
caminea *Fab.*
- Phyllobrotica** Redt.
decorata *Say.*
discoidea *Fab.*
- Luperus** Geoff.
meraca *Say.*
- Diabrotica** Chev.
12-punctata *Oliv.*
vittata *Fab.*
- Galeruca** Geoff.
externa *Say.*
cavicollis *Lec.*
rufosanguinea *Say.*
- Galerucella** Cr.
sagittariae *Gyll.*
decora *Say.*
notulata *Fab.*
notata *Fab.*
- Monoxia** Lec.
guttulata *Lec.*
- Trirhabda** Lec.
tomentosa *Linn.*
virgata *Lec.*
canadensis *Kirby.*
- Hypolampis** Olk.
pilosa *Ill.*
- Oedionychis** Latr.
gibbitarsis *Say.*
vians *Ill.*
lugens *Lec.*
thoracica *Fab.*
flavocyanea *Cr.*
- petaurista *Fab.*
quercata *Fab.*
suturalis *Fab.*
collares *Evans.*
- Disonycha** Chev.
limbicollis *Lec.*
alternata *Ill.*
punctigera *Lec.*
pennsylvanica *Ill.*
glabrata *Fab.*
triangularis *Say.*
collaris *Fab.*
collata *Fab.*
- Graptodera** Chev.
bimarginata *Say.*
chalybea *Ill.*
carinata *Germ.*
ignita *Ill.*
inermata *Lec.*
evicta *Lec.*
foliacea *Lec.*
- Glyptina**.
spuria *Lec.*
- Phyllotreta**.
lepidula *Lec.*
vittata *Fab.*
bipustulata *Fab.*
vicina *Kirby.*
puncticollis *Kirby.*
- Dibolia** Chev.
sera *Mels.*
- Systema** Chev.
Hudsonias *Forst.*
frontalis *Fab.*
collaris *Cr.*
marginalis *Ill.*
- Orthaltica** Cr.
copalina *Fab.*
- Crepidodera** Chev.
Helxines *Linn.*
atriventris *Mels.*
mancula *Lec.*
pubescens *Ill.*
- Epitrix** Foud.
cucumeris *Harr.*
- Mantura** Steph.
floridana *Cr.*
- Chaetocnema** Steph.
denticulata *Ill.*
alutacea *Cr.*
parcepunctata *Cr.*

Psylliodes Latr.
punctulata Mels.

Blepharida Chev.
rhois Forst.

Odontota Chev.
scapularis Oliv.
scutellaris Oliv.
bicolor Oliv.
rubra Web.

rosea Web.
inaequalis Web.
pallida Say.

Microrhopala Chev.
vittata Fab.
interrupta Coup.
excavata Oliv.

Chelomorpha Chev.
argualitch Fab.

Physonota Boh.
unipunctata Say.

Cassida Linn.
signifer Hbst.
pallida Hbst.

Coptocycla Chev.
aurichalcea Fab.
guttata Oliv.
clavata Fab.
plicata Boh.

TENEBRIONIDÆ.

Phelopsis Lec.
porcata Lec.
obcordata Lec.

Microschatia Sol.
inaequalis Lec.

Asida Latr.
opaca Say.
polita Say.

Coniontis Esch.
ovalis Esch.

Eleodes Esch.
tricostata Say.
obsoleta Say.
extricata Say.
hispidabris Say.
cordata Esch.
opaca Say.

Nyctobates Guér.
pennsylvanica DeG.
barbata Knoch.
subnitens Horn.

Ipthimus Truq.
opacus Lec.
serratus Mannh.

Merinus Lec.
lævis Oliv.

Upis Fabr.
ceramboides Linn.

Hapladrus Léc.
femoratus Fab.
concolor Lec.

Scotobates.
calcaratus Fab.

Xylopinus Lec.
saperdioides Oliv.
rufipes Say.

Tenebrionellis Cr.
obscurus Fab.
molitor Linn.
castaneus Knoch.
tenebrioides Beauv.

Blapstinus Latr.
moestus Mels.
interruptis Say.
metallicus Fab.

Pedinus Latr.
obsoletus Say.

Tribolium MacL.
ferrugineum Fab.
madens Charp.

Dioedus Lec.
punctatus Lec.

Uloma Lap.
impressa Mels.
mentalis Horn.
punctulata Lec.
culinarius Linn.

Anaedus Blanch.
brunnus Ziegl.

Paratenetus Spin.
punctatus Sol.
fuscus Lec.
gibbipennis Mots.

Diaperis Geoff.
hydni Fab.

Hoplocephala Lap.
bicornis Oliv.

Platydemia Lap.
excavatum Say.
ruficornis Sturm.
flavipes Fab.
ellipticum Fab.
americanum Lap.
laevipes Hald.
picilabrum Mels.

Scaphidema Redt.
senecium Lec.

Hypophloeus Fab.
parallelus Mels.
thoracicus Mels.
punctatus Lec.

Pentaphyllus Meg.
pallidus Lec.

Bolilotherus Cand.
bifurcus Fab.

Bolitophagus Hellw.
corticola Say.
depressus Rand.

Rhipidandrus Lec.
paradoxus Beauv.

Helops Fab.
micans Fab.

Meracantha Kirby.
contracta Beauv.
Canadensis Kirby.

Strongylium Kirby.
tenucolle Say.

CISTELIDÆ.

Allecula Fabr.
punctulata Mels.
nigrans Mels.

Hymenorus Muls.
pilosus Mels.
obscurus Say.
niger Mels.

Cistela Fab.
brevis Say.
opaca Lec.

sericea Say.
erythroga Kirby.

Isomira Muls.
quadristriata Coup.
velutina Lec.

Mycetochares Latr.
fraterna Say.
bicolor Coup.
foveatus Lec.

tenuis Lec.
binotata Say.

Chromatia Lec.
amoena Say.

Capnochroa Lec.
fuliginosa Mels.

Androchirus Lec.
fuscipes Mels.
luteipes Lec.

LAGRIIDÆ.

Arthromacra Kirby. *aenea* Say.

PYROCHROIDÆ.

Pyrochroa Geoff.
flabellata Fabr.
femorialis Lec.

Schizotus Newm.
cervicalis Newm.

Dendroides Latr.
Canadensis Latr.
concolor Newm.

ANTHICIDÆ.

Stereopalpus Laf.
badiipennis Lec.

Notoxus Geoff.
anchora Hentz.
monodon Fabr.

cervinus Laf.
pubescens Lec.
coracinus Lec.
granularis Lec.

Corphyra Say.
Newmani Lec.
lugubris Say.
fulvipes Newm.
labiata Say.
collaris Say.
elegans Hentz.

Anthicus Leach.
obscurus Laf.
formicarius Laf.
rejeetus Lec.
floralis Payk.
scabriceps Lec.

Xylophilus Latr.
piceus Lec.
fasciatus Mels.
basalis Lec.

MELANDRYIDÆ.

Canifa Lec.
pallipes Mels.
pallipennis Lec.

Phryganophilus Sahl.
collaris Lec.

Spilota Lec.
quadripustulosus Mels.

Tetratoma Fabr.
truncorum Lec.

Emmesa Newm.
connectens Newm.
labiata Say.

Zilora Muls.
hispidula Lec.
nuda Prov.

Stenotrachelus Latr.
arotatus Say.

Melandrya Fabr.
striata Say.

Mystaxis Kug.
simulator Newm.

Penthe Newm.
obliquata Fabr.
pimelia Fabr.

Xylita Payk.
laevigata Hellen.

Serropalpus Hellen.
striatus Hellen.

Synchroa Newm.
punctata Newm.

Carebara Lec.
longula Lec.

Enchodes Lec.
sericea Hald.

Dircaea Muls.
liturata Lec.

Symphora Lec.
flavicollis Hald.
rugosa Hald.

Hallomenus Panz.
scapularis Mels.

Eustrophus Ill.
bicolor Say.
bifasciatus Say.

tomentosus Say.

Orchesia Latr.
castanea Mels.
gracilis Mels.

MORDELLIDÆ.

Anaspis Geoff.
nigra Hald.
flavipennis Hald.
rufa Say.

Tomoxia Costa.
bidentata Say.
lineella Lec.
inclusa Lec.

Mordella Linn.
borealis Lec.
melaena Germ.
scutellaris Fabr.
octopunctata Fabr.
marginata Mels.

lineata Mels.
serval Say.
triloba Say.

Mordellistena Costa.
lutea Mels.
trifasciata Say.
limbalis Mels.
vitis Lec.
decorella Lec.
ornata Mels.
scapularis Say.
tosta Lec.
fulvicollis Mels.
varians Lec.
nigricans Mels.

pustulata Mels.
fuscipennis Mels.
morula Lec.
unicolor Lec.
divisa Lec.
liturata Mels.
pityptera Lec.
discolor Mels.

Pelecotoma Fisch.
flavipes Mels.

Myodites Latr.
fasciatus Say.
stylopidus Newm.

MELOIDÆ.

Meloe Linn.
impressus Kirby.
angusticollis Say.
americanus Leach.

Macrobasis Lec.
unicolor Kirby.

Epicauta Redt.
oblita Lec.
trichrus Pallas.
ferruginea Say.
vittata Fab.
pennsylvanica DeG.

Pomphopoea Lec.
aenea Say.

Cantharis Linn.
Nuttalli Say.
cyanipennis Say.

CEPHALOIDÆ.

Cephaloon Newm.

lepturides Newm.

tenuicorne Lec.

CEDEMERIDÆ.

Calopus Fabr.
angustus Lec.

Ditylus Fischer.
oceruleus Rand.

Nacerdes Schmidt.
melanura Linn.

Oxacis Lec.
thoracica Fabr.

notoxoides Fabr.

Asclera Schmidt.
ruficollis Say.
puncticollis Say.

MYCTERIDÆ.

Mycterus Clairv.
scaber Hald.

Lacconotus Lec.
punctatus Lec.

PYTHIDÆ.

Pytho Latr.
niger Kirby.
americanus Kirby.
strictus Lec.

Crymodes Lec.
discicollis Lec.

Priognathus Lec.
monticornis Rand.

Boros Herbst.
unicolor Say.

Salpingus Gyll.
virescens Lec.

Rhinosimus Latr.
nitens Lec.

RHINOMACERIDÆ.

Rhinomacer Fabr.

pilosus Lec.

elongatus Lec.

RHYNCHITIDÆ.

Auletes.
ater Lec.

collaris Gyll.

cyanellus Lec.

Eugnamptus Sch.
angustatus Gyll.

Rhynchites Hbst.
bicolor Fabr.

Pterocolus Sch.
ovatus Fabr.

ATTELABIDÆ.

Attelabus Linn.
analisis Illig.

bipustulatus Fabr.
rhois Boh.

maculatus Prov.

OTIORHYNCHIDÆ.

Barynotus Germ.
undulatus Uhler.

Otiorhynchus Germ.
sulcatus Fabr.
ligneus Oliv.

Eyotus Lec.
naso Lec.

Panscopus Sch.
erinaceus Say.

Trachypliceus Germ.
melanothrix Kirby.

Cyphomimus Horn.
dorsalis Horn.

Anametis Horn.
grisea Horn.

Pandeletejus Sch.
hilaris Hbst.

Scythropus Sch.
elegans Couper.

Phyxelis Sch.
glomerosus Schh.
rigidus Say.

CURCULIONIDÆ.

Sitones Sch.
lineellus Gyll.
flavescens Marsh.
tibialis Hbst.
indifferens Say.

Phytonomus Sch.
comptus Say.
nigrirostris Fabr.

Macrops Kb.
linetulus Say.
sparsus Say.
porcellus Say.
vittaticollis Kb.
solutus Boh.
maculicollis Kirby.

Trichalophus Lec.
alternatus Say.

Lepyrus Sch.
gemellus Kb.
colon Linn.

Listronotus Jekel.
squamiger Say.
inaequalipennis Boh.
caudatus Say.
appendiculatus Boh.
latiusculus Boh.

Hypomolyx Lec.
pinicola Couper.

Lepidophorus Kb.
lineaticollis Kb.

Ithycerus Sch.
noveboracensis Forst.

Pachylobius Lec.
picivorus Germ.

- Hylobius** Sch.
pales *Hbst.*
confusus *Kb.*
stupidus *Boh.*
- Pissodes** Germ.
strobi *Peck.*
costatus *Mannh.*
affinis *Fand.*
dubius *Ravul.*
nemorensis *Germ.*
- Centrocleonus** Lec.
molitor *Lec.*
- Cleonus** Sch.
vittatus *Kb.*
- Lixus** Fabr.
caudifer *Lec.*
concavus *Say.*
musculus *Say.*
- Grypidius** Sch.
vittatus *Coup.*
- Erycus** Tourn
puncticollis *Lec.*
erirrhinus ephippiatus
Say.
erirrhinus rufus *Say.*
- Dorytomus** Sch.
mucidus *Say.*
brevicollis *Lec.*
luridus *Mannh.*
sqamosus *Lec.*
- Tanysphyrus** Sch.
lemnæ *Fabr.*
- Bagous** Germ.
obliquus *Lec.*
americanus *Lec.*
magister *Lec.*
- Otidocephalus** Chev.
americanus *Chev.*
myrmecodes *Say.*
scrobicollis *Boh.*
lævicollis *Horn.*
- Magdalis** Germ.
barbita *Say.*
olyra *Hbst.*
- inconspicua* *Horn.*
pandura *Say.*
armicollis *Say.*
- Anthonomus** Germ.
quadrigibbus *Say.*
scutellatus *Say.*
signatus *Say.*
rubidus *Lec.*
sycophanta *Walsh.*
suturalis *Lec.*
musculus *Say.*
flavicornis *Boh.*
nigrinus *Boh.*
subfasciatus *Lec.*
tessellatus *Walsh.*
- Orchestes** Illig.
pallicornis *Say.*
- Elleschus** Steph.
ephippiata *Say.*
- Acalyptus** Sch.
carpini *Hbst.*
- Piazorhinus** Sch.
scutellaris *Say.*
- Thysanocnemis** Lec.
fraxini *Lec.*
- Tychius** Sch.
tectus *Lec.*
- Gymnetron** Sch.
teter *Fabr.*
- Læmosacus** Sch.
plagiatus *Fabr.*
- Conotrachelus** Sch.
juglandis *Lec.*
nenuphar *Hbst.*
cratægi *Walsh.*
posticatus *Boh.*
anaglypticus *Say.*
- Rhysematus** Sch.
palmacollis *Say.*
- Tyloderma** Say.
æreum *Say.*
- Cryptorhynchus** Illig.
parochus *Hbst.*
bisignatus *Say.*
fuscatus *Lec.*
minutissimus *Lec.*
obliquefasciatus *Boh.*
- Piazurus** Sch.
oculatus *Say.*
subfasciatus *Lec.*
- Copturus** Sch.
quercus *Say.*
longulus *Lec.*
- Mononyctus** Germ.
vulpeculus *Fabr.*
- Craponius** Lec.
inequalis *Say.*
- Cœliodes** Sch.
nebulosus *Lec.*
- Ceutorhynchus** Germ.
sulcipennis *Lec.*
semirufus *Lec.*
septentrionalis *Gyll.*
- Pelenomus** Thoms.
sulcicollis *Fabr.*
- Cœlogaster** Sch.
cretura *Hbst.*
- Rhinoncus** Sch.
pericarpus *Linn.*
pyrrhopus *Lec.*
- Baris** Germ.
confinis *Lec.*
- Pseudobaris** Lec.
nigrina *Say.*
- Madarus** Sch.
undulatus *Say.*
- Centrinus** Sch.
scutellum-album *Say.*
rectrostris *Lec.*
- Balaninus** Germ.
caryatrypes *Boh.*
rectus *Say.*
nascicus *Say.*

BRENTHIDÆ.

Eupsalis Lec.

minuta *Drury.*

CALANDRIDÆ.

- | | | |
|---|---|---|
| Rhodobænus Lec.
<i>tridecimpunctatus Illig.</i> | Calandra Clairv.
<i>oryzæ Linn.</i>
<i>remotepunctata Gyll.</i>
<i>granaria Linn.</i> | <i>corticola Say.</i> |
| Sphenophorus Sch.
<i>æqualis Gyll.</i>
<i>pertinax Oliv.</i>
<i>costipennis Horn.</i>
<i>sculptillis Uhler.</i>
<i>melanocephalus Fabr.</i>
<i>nubilus Gyll.</i> | Dryophthorus Sch.
<i>corticalis Say.</i> | Phlæophagus Sch.
<i>apionides Horn.</i> |
| | Cossonus Clairv.
<i>platalea Say.</i> | Rhyncholus Germ.
<i>brunneus Mannh.</i> |
| | | Stenoscelis Woll.
<i>brevis Boh.</i> |

SCOLYTIDÆ.

- | | | |
|--|--|--|
| Monarthrum Kirsch.
<i>fasciatum Say.</i>
<i>mali Fitch.</i> | Dryocetes Eich.
<i>septentrionis Mannh.</i> | Hylesinus Fabr.
<i>aculeatus Say.</i>
<i>opaculus Lec.</i>
<i>brevicornis Kirby.</i>
<i>rufitarsis Kirby.</i> |
| Pityophthorus Eich.
<i>retusus Lec.</i>
<i>meteriarius Fitch.</i>
<i>pullus Zimm.</i>
<i>puberulus Lec.</i>
<i>sparsus Lec.</i>
<i>plagiatus Lec.</i> | Tomicus Latr.
<i>calligraphus Germ.</i>
<i>cacographus Lec.</i>
<i>pini Say.</i> | Phlæosinus Eich.
<i>dentatus Say.</i> |
| Hypothenemus West.
<i>hispidulus Lec.</i> | Micracis Lec.
<i>suturalis Lec.</i>
<i>aculeata Lec.</i> | Dendroctonus Er.
<i>terebrans Oliv.</i>
<i>similis Lec.</i>
<i>rufipennis Hb.</i>
<i>punctatus Lec.</i>
<i>simplex Lec.</i>
<i>obesus Mann.</i> |
| Xyloterus Er.
<i>retusus Lec.</i>
<i>bivittatus Hb.</i>
<i>scabricollis Lec.</i>
<i>politus Say.</i> | Scolytus Oliv.
<i>quadrispinosus Say.</i> | Crypturgus Er.
<i>atomus Lec.</i> |
| Xyleborus Eich.
<i>pyri Peck.</i>
<i>obesus Lec.</i>
<i>celsus Eich.</i>
<i>xylographus Say.</i>
<i>pubescens Zimm.</i>
<i>cælatus Eich.</i> | Chramesus Lec.
<i>icoriæ Lec.</i> | Hylastes Er.
<i>porculus Er.</i>
<i>cavernosus Zimm.</i>
<i>tenuis Zimm.</i> |
| | Polygraphus Er.
<i>rufipennis Kb.</i> | Hylurgops Lec.
<i>pinifex Fitch.</i> |
| | Phlæotribus Latr.
<i>liminaris Harr.</i> | |

ANTHRIBIDÆ.

- | | | |
|--|--|--|
| Gonotropis Lec.
<i>gibbosus Lec.</i> | Hormiscus Woll.
<i>saltator Lec.</i> | Cratoparis Sch.
<i>lunatus Fabr.</i> |
| Eurymycter Lec.
<i>fasciatus Oliv.</i> | Anthribus Fabr.
<i>cornutus Say.</i> | Brachytarsus Sch.
<i>variegatus Say.</i> |
| Allandrus Lec.
<i>bifasciatus Lec.</i> | | |

Families, 77 ; Genera, 823 ; Species, 2485.

DIPTERA.

TIPULIDÆ.

- Culex** Linn.
caspius *Pall.*
ciliatus *Fab.*
excrucians *Walk.*
hiemalis *Fitch.*
impatiens *Walk.*
impiger *Walk.*
implacabilis *Walk.*
nigripes *Zett.*
pipiens *Linna.*
provocans *Walk.*
puncator *Kirby.*
stimulans *Walk.*
- Chironomus** Fabr.
albiglria *Walk.*
aterrimus *Meig.*
attenuatus *Walk.*
basalis *Steg.*
bimacula *Walk.*
borealis *Curtis.*
brunneus *Walk.*
confinis *Walk.*
crassicollis *Walk.*
cristatus *Fab.*
festivus *Say.*
fimbriatus *Walk.*
flavicingula *Walk.*
frigidus *Zett.*
hyperboreus *Steger.*
lasiomerus *Walk.*
lasiopus *Walk.*
nigritibia *Walk.*
pellucidus *Walk.*
polaris *Kirby.*
trichomerus *Walk.*
unicolor *Walk.*
variabilis *Steger.*
- Tanypus** Meig.
crassinervis *Zett.*
decedens *Walk.*
tibialis *Steger.*
- Ceratopogon** Meig.
obscurus *Walk.*
parvus *Walk.*
sordidellus *Zett.*
transiens *Walk.*
- Asthenia** Westw.
americana *Walk.*
- Lasioptera** Meig.
parva *Walk.*
- Cecidomyia** Meig.
calipter *A. Fitch.*
strobiloides *O. S.*
salicis-brassicoides *O. S.*
destructor *Say.*
grossulariae *Fitch.*
salicis *Fitch.*
spongivora *Walk.*
tritici *Kirby.*
- Asphondylia.**
monacha *O. S.*
Williei *Brodie.*
- Psychoda** Meig.
degenera *Walk.*
- Erioptera** Meig.
venusta *O. S.*
- Limnobia** Meig.
albivitta *Walk.*
argus *Say.*
badia *Walk.*
cana *Walk.*
contermina *Walk.*
rivosa *Lin.*
simulans *Walk.*
turpis *Walk.*
- Limnobiaorhynchus**
Westw.
canadensis *Westw.*
- Tipula** Linn.
albilatus *Walk.*
alterna *Walk.*
alternata *Say.*
borealis *Curtis.*
borealis *Walk.*
dorsimacula *Walk.*
duplex *Walk.*
ferruginea *Fab.*
flavicans *Fab.*
frigida *Walk.*
furca *Walk.*
glomerata *Walk.*
maculipennis *Say.*
- nubilis* *Harris.*
platymera *Walk.*
pratorum *Kirby.*
resurgens *Walk.*
simulata *Walk.*
tricolor *Fabr.*
triplex *Walk.*
trivittata *Say.*
- Ctenophora** Fabr.
dorsalis *Walk.*
Parrii *Kirby.*
succedens *Walk.*
- Bittacomorpha** Westw.
clavipes *Fab.*
- Elephantomyia.**
Westwoodii *O. S.*
- Ptychoptera** Fabr.
metallica *Walk.*
- Hesperinus** Walker.
brevifrons *Walk.*
- Anisomera** Hoffm.
longicornis *Walk.*
- Chionea** Dalm.
aspera *Walk.*
scita *Walk.*
valga *Harris.*
- Trichocera** Meig.
bimacula *Walk.*
brumalis *Fitch.*
gracilis *Walk.*
scutellata *Say.*
- Dixa** Meig..
nova *Walk.*
recens *Walk.*
- Asindulum** Latreille.
tenuipes *Walk.*
- Platyura** Meig.
fascipennis *Say.*
- Dionomus** Walker.
nebulosus *Walk.*

Sciophila Hoffm.
bifasciata Walk.
grisea Walk.
littoralis Say.
obliqua Say.

pallipes Say.

Leja Meig.
trifasciata Walk.
triplagiata Harris.

unicolor Walk.
varia Walk.
ventralis Say.

MYCETOPHILIDÆ.

Mycetophila Meigen.
bifasciata Walk.
contigua Walk.
despecta Walk.
laeta Walk.
maculipennis Say.
obscura Walk.
parva Walk.
plebeja Walk.

propinqua Walk.
sericea Say.

Sciara Fabr.
abbreviata Walk.
atrata Say.
exigua Say.
fraterna Say.
mali Fitch.

perpusilla Walk.
polita Say.
robusta Walk.

Pulex.
irritans Linn.
musculi Duges.
sciuri Say.

SIMULIDÆ.

Simulium Latr.
calceatum Harris.
decorum Walk.
invenustum Walk.
reptans Lin.
vittatum Zett.
molestum Walk.

Scatopse Geoffr.
niteus Walk.
obscura Walk.
pusilla Walk.

Arthria Kirby.
analisa Kirby.

Penthetria Meig.
atra Macq.

Dilophus Meigen.
fulvicoxa Walk.
serraticollis Walk.

BIBIONIDÆ.

Biblio Geoffry.
albigennis Say.
articulosa Harris.
brunnipes Fab.
canadensis Macq.

femorata Wied.
fumipennis Walk.
gracilis Walk.
humeralis Walk.
scita Walk.

striatipes Walk.
vestita Walk.

Rhyphus Latr.
alternatus Say.

STRATIOMIDÆ.

Beris Latr.
quadridentata Walk.

nigrifrons Walk.
Norma Wied.
Nymphis Walk.
nerucula Serv.
pallipes Fab.
quadripunctata Harris.
vertebrata Say.

Nemotelus Geoffr.
carneus Walk.

Stratiomyia Geoffr.
canadensis Walk.
ischiaca Harris.
intermedia Wied.

Sargus Fabr.
decorus Say.

XYLOPHAGIDÆ.

Xylophagus Meig.
fasciatus Walk.

heros Harris.
politus Harris.

Caenomomyia Latr.
pallida Say.

TABANIDÆ.

Pangonia Latr.
tranquilla *O. S.*
chrysochroma *O. S.*

Tabanus Linn.
abdominalis *Fab.*
affinis *Kirby.*
americanus *Först.*
atratus *Fabr.*
bicolor *Macq.*
calens *Linn.*
catenatus *Walk.*
cinctus *Fab.*
comes *Walk.*
duplex *Walk.*
flavipes *Wied.*
frontalis *Walk.*
fulvescens *Walk.*
gracilis *Wied.*

imitans *Walk.*
incisus *Walk.*
intermedius *Walk.*
lineola *Fab.*
marginalis *Fab.*
melanocerus *Wied.*
nigrescens *Pal.*
nigrovittatus *Macq.*
Novæ Scotiæ *Macq.*
pauper *Walk.*
Reinwardtii *Wied.*
simulans *Walk.*
stygius *Say.*
tarandi *Walk.*
Terræ Novæ *Macq.*
triligatus *Walk.*
vicinus *Macq.*
zonalis *Kirby.*

Therioptectus.
lasiophthalmus *Macq.*
affinis *Kirb.*

Chrysops Meig.
ater *Macq.*
carbonarius *Walk.*
fallax *O. S.*
striatus *O. S.*
sordidus *Say.*
fugax *Walk.*
excitans *Walk.*
furcatus *Walk.*
moerens *Walk.*
niger *Macq.*
provocans *Walk.*
sepulchralis *Zett.*
vittatus *Wied.*

ASILIDÆ.

Ceraturgus Wied.
aurulentus *Fab.*
fasciatus *Walk.*
niger *Macq.*

Dioctria Fab.
octopunctata *Say.*

Dasygogon Fab.
Aeacus *Wied.*
argenteus *Say.*
Falto *Walk.*
Lutatius *Walker.*
Macerinus *Walk.*
sexfasciatus *Say.*

Laphria Fabr.
Aeatus *Walk.*
Alcanor *Walk.*
analis *Mac.*
bilimenta *Walk.*
avicollis *Say.*
flavibarbis *Harris.*
posticata *Say.*
pyrrhacra *Wied.*
Sacrator *Walk.*
sericea *Say.*
Terræ novæ *Macq.*
thoracica *Fab.*

Andrewosoma.
pyrrhacra *Mein.*

Pranachus.
quadratus *Walk.*

Proctacanthus Macq.
heros *Wied.*
Milbertii *Macq.*

Asilus Lin.
abdominalis *Say.*
annulipes *Macq.*
Herminius *Walk.*
Lecythus *Walk.*
Novæ Scotiæ *Macq.*
sericeus *Say.*
apicalis *Say.*
tibialis *Macq.*

LEPTIDÆ.

Leptis Fabr.
intermedia *Walk.*
mystacea *Macq.*
proxima *Walk.*
punctipennis *Say.*
quadrata *Say.*

reflexa *Walk.*
simillima *Walk.*

Atherix Latr.
filia *Walk.*

variegata *Walk.*
vidua *Walk.*

Chrysopila.
ornata *Say.*

THEREVIDÆ.

Scenopinus Latr.
fenestralis *Linn.*

Thereva Latr.
conspicua *Walk.*

frontalis *Say.*
nigra *Say.*
plagiata *Harris.*

senex *Walk.*
vicina *Walk.*
caudata *Serv.*

BOMBYLIARIDÆ.

Anthrax Linn.
albofasciata Macq.
analis Say.
Bastardi Macq.
costata Say.
fasciata Macq.
fascipennis Say.
fulviana Say.
Halcyon Say.
nigricanda Walk.

lateralis Say.
Oedipus Fab.
rugicauda Serv.
sinuosa Wied.
terminipennis Say.
vestita Walk.

major Lin.
pygmaeus Fab.
varius Fab.

Argyromocha.
limatulus Say.

Bombylius Linn.
aequalis Fab.
fratellus Wied.

Systochus.
vulgaris Serv.

HYBOTINIDÆ.

Hybos Fabr.
duplex Walk.
elevatus Harris.
reversus Walk.

subjectus Walk.

Spania Meig.
Edeta Walk.

Microphorus Macq.
drapetoides Walk.

EMPIDÆ.

Hilara Meig.
transfuga Walk.
migrata Walk.

Rhamphomyia Meig.
Agasicles Walk.
americana Wied.
Anaxo Walk.
Dana Walk.
Ficana Walk.
flavirostris Walk.
Mallos Walk.
Minytus Walk.
Phemius Walk.

Hemerodromia Hoffm.
albipes Walk.
praecatoria Meig.
superstitiosa Say.

Empis Linn.
Agasthus Walk.
Amytis Walk.
borealis Lin.
colonica Walk.
Cornus Walk.
Eudamides Walk.
geniculata Kirby.
laniventris Esch.
luctuosa Kirby.
Ollius Walk.

Heliodromia Haliday.
longipes Walk.

Tachydromia Meig.
maculipennis Walk.
portaeicola Walk.
similis Walk.

Platypalpus Macq.
Alexippus Walk.

Drapetis Meig.
nigra Meig.

SYRPHICIDÆ.

Chrysotoxum Meig.
derivatum Walk.
fasciolatum Deg.
flavifrons Macq.

Baton Walk.
communis Walk.
flavifrons Walk.
haematodes Fabr.
Libo Walk.

Agnon Walk.
Aldidice Walk.
americanus Wied.

Psarus Latr.
quadrifasciatus Say.

Milesia Latr.
excentrica Harris.
ischiaca Harris.

Mesograpta.

sp. — ?
 sp. — ?

Eumerus Meig.
porcus Walk.
privernus Walk.

Sphaerophoria.
cylindrica Say.

Syritta St. Fargeau.
pipiens Macq.
proxima Say.

Chrysogaster Meigen.
pectipennis Lin.

Syrphus Lin.
adolescens Walk.
Aesyctes Walk.

arcinictus Walk.
cylindricus Say.
diversipes Macq.
emarginatus Say.
geniculatus Macq.
granditarsa Forster.
guttatus Meig.
hieroglyphicus Meig.
lapponicus Zett.
latrans Walk.
menthastri Lin.

Xylota Meig.
badia Walk.

- Naso** *Walk.*
obliquus Say.
cestriformis Walk.
ribesii Fab.
sexquadratus Walk.
strigatus Stäger.
topiarius Meig.
umbellatarum Fab.
vittatifrons Harris.
- Sericomyia** *Meig.*
filia Walk.
lappona Lin.
limbipennis Macq.
militaris Walk.
sexfasciata Walk.
tuberculata Harris.
- Tropidia** *Meig.*
quadrata Say.
- Polydonta** *Macq.*
bicolor Macq.
- Psilopus** *Meig.*
albicoxa Walk.
amatus Walk.
Sipho Say.
nigrifemoratus Walk.
scutellatus Harris.
- Porphyrps** *Meig.*
polysicornis Walk.
- Conops** *Linn.*
æthiops Walk.
sagittarius Say.
fr-cillata West.
- Stomoxys** *Geoff.*
calcitrans Lin.
- Cuterebra** *Clark.*
americana Fab.
emasculator Fitch.
gophori Brodie.
buccata Fab.
cuniculi Clark.
- Spilomyia.**
quadrifasciatus Say.
fusca Serv.
- Merodon** *Latr.*
Bardus Say.
curvipes Wied.
morosus Walk.
tudicornis Harris.
- Helophilus** *Meigen.*
albiceps Macq.
Anausis Walk.
billineatus Curtis.
borealis Stäger.
fasciatus Walk.
glacialis Læw.
grœnlandicus O. Fabr.
latro Walk.
Novæ Scotæ Macq.
similis Macq.
Canadensis Brodie.
Yorkii Brodie.
posticata Wied.
cimbiciformis Fall.
- Medeterus** *Fischer.*
alboflorens Walk.
chrysologus Walk.
glaber Walk.
- Dolichopus** *Latreille.*
adjacens Walk.
affinis Walk.
- Eristalis** *Latreille.*
Androclius Walk.
Bastardi Macq.
chalepus Walk.
compactus Walk.
dimidiatus Wied.
diminutus Walk.
flavipes Walk.
frater Walk.
inflexus Walk.
nebulosus Walk.
pervagus Harr.
posticatus Fab.
Bronsi West.
tenax Linn.
semimetallicus Macq.
sincerus Harris.
transversus Wied.
- Volucella** *Geoffr.*
basalis Harris.
evecta Walk.
plumata Fab.
- DOLICHOPODIDÆ.**
- Medeterus** *Fischer.*
alboflorens Walk.
chrysologus Walk.
glaber Walk.
- Dolichopus** *Latreille.*
adjacens Walk.
affinis Walk.
- ciliatus Walk.**
confinis Walk.
discessus Walk.
exclusus Walk.
lamellipes Walk.
separatus Walk.
sequax Walk.
soccatu Walk.
terminatus Walk.
- CONOPIDÆ.**
- Oncomyia.**
loraria Serv.
- Myopa** *Latrielle.*
vesiculosa Say.
vicaria Walk.
- STOMOXIDÆ.**
- Cybira** *Walk.*
pallida Harris.
- OESTRIDÆ.**
- horripilum** *Clark.*
- Hypoderma** *Linn.*
bovis Fab.
ovis Lin.
supplens Walk.
- tarandi** *Lin.*
- Gastrophilus** *Meigen.*
equi Lin.
haemorrhoidalis Lin.

MUSCIDÆ.

Gymnosoma Meig.
occidua Walk.
par Walk.

Ocyptera Latr.
Dosiades Walk.
Euchenor Walk.
lateralis Harris.

Tachina Fab.
algens Wied.
Ampelus Walk.
Anaxias Walk.
apicifera Walk.
candens Walk.
conica Harris.
decisa Walk.
degenera Walk.
Dydas Walk.
Epicydes Walk.
finitima Walk.
florum Walk.
hirta Curtis.
hystrix Fab.
incauta Harris.
irrequieta Walk.
iterans Walk.
Lapilaei Desv.
Mella Walk.
noctuae Harris.
Panaetius Walk.
Pansa Walk.
plagiata Harris.
picea R. Desv.
prisca Walk.
Pyste Walk.
signifera Walk.
Theutis Walk.
violenta Walk.
vidua Harris.

Gonia Meigen.
albifrons Walk.
philadelphica Macq.

Mesembrina Meig.
Latreillii Desv.

Sarcophaga Meig.
acerba Walk.
aegra Walk.
avida Walk.
cadaverina Desv.

carniria Linn.
flavipalpis Macq.
Georgina Wied.
plinthopyga Wied.
rabida Walk.
rediviva Walk.
vigil Walk.
viridescens Desv.

Dexia Meig.
abdominalis Desv.
Ogoa Walk.
Pristis Walk.
rufipennis Macq.
tibialis Desv.

Musca Linn.
aurulans Desv.
cadaverina Linné.
cadaverum Kirby.
cæsar Linn.
cerasina Say.
compressa Desv.
domestica Lin.
Idessa Walk.
Herda Walk.
lepida Desv.
Lilaea Walk.
mollis Walk.
mortisequa Kirby.
muralis Walk.
obscoena Esch.
regina Meig.
stabulans Fall.
stygia Fab.
terræ novæ Macq.
vespillo Fab.
vicina Desv.
viridescens Desv.
vomitoria Linné.

Anthomyia Meig.
Acræ Walk.
Aemene Walk.
Alcathoe Walk.
Alone Walk.
Anane Walk.
Apina Walk.
Ansoba Walk.
Badia Walk.
Barpana Walk.
Brixia Walk.

Bysia Walk.
determinata Walk.
Donuca Walk.
dubia Curtis.
Geldria Walk.
Idyla Walk.
irritans Meig.
Isura Walk.
Lipsia Walk.
Luteva Walk.
Lysinœ Walk.
Narina Walk.
nigra Walk.
nigrifrons Walk.
nigripennis Walk.
Omole Walk.
Opalia Walk.
palposa Walk.
Perrina Walk.
ceparum Linn.
brassicæ Bouche.
raphani Harris.
Rugia Walk.
Signia Walk.
similis Walk.
similis Fitch.
soccata Walk.
spinosa Walk.
Teate Walk.
timida Harris.
Tinia Walk.
Troene Walk.
Uxama Walk.
Viana Walk.

Eriphia Meigen.
Acela Walk.
Arelate Walk.
biquadrata Walk.
ciliata Walk.
flavifrons Walk.
grisea Walk.
Lamnia Walk.
lata Walk.
marginata Walk.
pretiosa Walk.

Dialyta Meigen.
cupreifrons Walk.
sexmaculata Walk.
solita Walk.
spinosa Walk.
substituta Walk.

DIPTERA.

CONDYLURIDÆ.

Cordylura Fall.
Aea Walk.
bicolor Walk.
cupricrus Walk.
flavipennis Walk.
imperator Walk.
longa Walk.
placida Harris.
pubera Lin.
tenuior Walk.
voluericaput Walk.
canadensis Brodie.

Lispe Meigen.
hispida Walk.
simillima Walk.

pallida Walk.
pubescens Walk.
squalida Meig.
stercoraria Lin.

Scatophaga Latreille.
apicalis Curtis.
bicolor Walk.
fucorum Meig.
furcata Say.
intermedia Walk.
litorea Meig.

Dryomyza Meig.
convergens Walk.

Sapromyza Fall.
philadelphica Macq.

ORTALIDÆ.

Ortalis Fall.
costalis Walk.
diopsides Walk.
nuphæra Harris.

Sepsis Fallen.
minuta Wied.
putris Linné.
similis Macq.

Elisæ Wied.
lupulina Fab.

Rhagoletes.
pomonella Walsh.

Lauxania Latreille.
cylindricornis Fab.

Lonchæa Fall.
polita Say.
rufitarsis Macq.
tarsata Fall.

TRYPETIDÆ.

Straussia.
longipennis Wied.

Prochyliza Walk.
xanthostoma Walk.

Calobata Meig.
Alesia Walk.

Eutreta.
sparsa Wied.

Lissa Meig.
cornuta Walk.
polita Harris.
varipes Walk.

Sphyracephala Say.
brevicornis Say.
subbifasciata Fitch.

Eurosta.
comma Wied.

Chyliza Fall.
metallica Walk.

Tetanura Meig.
pallida Harris.

Actora Meig.
ferruginea Walk.

SCIOMYZIDÆ.

Sciomyza Fall.
nigripalpus Walk.

arnupes Serv.

sparsa Læw.
valida Læw.
plumosa Læw.
struthio Walk.

Piophilæ Fall.
casei Lin.
nigriceps Macq.

Pyrgota Wied.
undata Wied.
valida Harris.

Dryomyza.
convergens Walk.

Tetanocera Dumer.
canadensis Macq.
cauta Harris.
cribaria Harris.
elata Lin.

Heteromyza Fall.
buccata Fall.
eriphides Walk.
flavipes Walk.
fusca Macq.

Sepedon Latr.
fuscipennis Læw.

HELOMYZIDÆ.

Helomyza Fall.
fasciata Walk.
tincta Walk.

Notiphila Fall.
nitidula Fall.
producta Walk.
repleta Walk.

Blepharoptera.
pubescens Linn.

Ephydra Fall.
octonotata Walk.
oscitans Walk.

picea Walk.
striata Walk.

Drosophila Fall.
cellaris Lin.

Diastata Meig.
tenuipes Walk.

Chlorops Meig.
annulata Walk.
assimilis Macq.
bistriata Walk.
coxendix Fitch.
perflava Walk.

tibialis Fitch.
vulgaris Fitch.

Borborus Meig.
annulus Walk.

Phora Latr.
aterrima Fab.
fuscipes Macq.
rufipes Fab.
velox Harr.

Olfersia Wied.
americana Leach.
albipennis Say.

HIPPOBOSCIDÆ.

Ornithomyia Leach.
nebulosa Say.
pallida Say.

Melophagus Latr.
depressus Say.
ovinus Lin.

Hippobosca Linn.
equinia Lin.
bubonis Pack.
aquilæ Brodie.

Families, 25 ; Genera, 157 ; Species, 714.

HEMIPTERA.

APHIDÆ.

Aphis.

avenæ Fab.
mali Fab.
malifollæ Fitch.
cerasi Fab.
persicæ Sulz.
brassicæ Linn.

Lachnus.

strobi Fab.
caryæ Harr.

Eriosoma.

lanigera Hans.

Hormaphis.

hamamelidis O.-Sack.

Thelaxes.

ulmicola Walsh.

Pemphigus.

formicetorum Walsh.
vagabundus Walsh.
rhois Fitch.
ulmicola Fitch.
pyri Fitch.

COCCIDÆ.

DIASPINÆ.

Aspidiotus.

abietis Com.
ancylus Put.
Aurantii Mask.
nerii Bouche.
pini Com.

Diaspis.

Cacti Com.
ostræformis Curtis.
rosæ Sand.

Chianaspis.

furfurus Fitch.

pini folia Fitch.
salicis Linn.

Myilaspis.

citricola Pack.
pomorum Bouche.

COCCINÆ.

Dactylopius.

adonidum Linn.
longifilis Com.

Leucanium.

juglandifex Fitch.

Pulvineria.

innumerabilis Rath.
salicis Bouche.

CICADELLIDÆ.

Jassus.

immistus Say.
nouvellus Say.
irroratus Say.
aurantiacus Prov.
subcupræus Prov.
6-punctatus Prov.
nervatus Prov.

Macropsis.

clitellarius Prov.
ocellatus Prov.

Heleochara.

communis Fitch.

Typhlocyba.

rosea Prov.

Anlacizes.

mollipes Say.

Diraphia.

viridescens Prov.
comes Say.
obliqua Say.

Diedrocephala.

4-vittata Say.
mollipes Say.

Proconia.

costalis Fabr.

Tettigonia.

bifida Say.
quebecensis Prov.

Blythoscopus.

sanguinolentus Prov.
4-punctatus Prov.

Psylla.

ochracea Prov.
brunnea Prov.

Erythroneura.

affinis Say.
vitis Harr.

Clastoptera.

obtusa Say.
proteus Fitch.
St. Cyri Prov.

Pediopsis.

flavescens Prov.

Aphrophora.
parallela Say.
4-notata Say.

Cephalelus.
americanus Say.

Acopsis.
viridis Prov.

Ptyelus.
albiceps Say.

Penthimia.
picta Prov.

FULGORIDÆ.

Flata.
vulgaris Say.

Similia.
vau Sig.

Ledra.
caryæ Fitch.

Enchenopa.
latipes Say.
binotata Say.

Ceresa.
bubalus Fab.
minor Fab.
dicerus Say.

Gyphona.
flavolineata Fitch.

Dephlox.
unipunctata Prov.
furcata Prov.

Telemona.
fasciata Fitch.
querci Fitch.
ampelopsides Harr.
unicolor Fitch.

Bythoscopus.
clitellarius Say.
seminudus Say.

Entilia.
carinata Fors.

Macropsis.
nobilis Harr.

Caranota.
mera Say.

Anotia.
Bonnetii Kirb.

CICADARIDÆ.

Cicada.
canicularis Harr.

rimosa Say.

septendecim Linn.

NOTONECTIDÆ.

Corixa.
interrupta Say.

Notonecta.
undulata Say.
striata Say.
irrorata Uhl.

Myodocha.
serripes Latr.

Meneclis.
inserta Say.

Calocoris.
rapidus Say.

NEPIDÆ.

Belostoma.
americanum Leidy.
grisea Say.
grandis Say.

Ranatra.
fusca Say.
nigra Hetz.

Nepa.
fluviatilis Say.
fluminea Say.

PLOTERIDÆ.

Gerris.
marginatus Say.

remegis Say.
rufoscutellatus Latr.

canaliculatus Say.

REDUVIDÆ.

Salda.
major Prov.

Cormopepia.
carnifex Hahn.

Calocoris.
rapidus Say.

Nabis.
inscriptus Say.
suboleoptratus Kirb.

Phymota.
erosa Linn.

Brochymena.
4-notata Prov.
arborea Say.

Acholla.
6-spinosus *Say.*

Siera.
multispinosa *DeGeer.*

Rhyparochromus.
fallax *Say.*
punctatus *Prov.*

Amnestus.
spinifrons *Say.*

Euschistus.
servus *Say.*
fipilis *Say.*
tristigma *Say.*
punctipes *Say.*

Comes.
delia *Say.*

Notoglossa.
undata *Say.*

Nerara.
hilaris *Say.*
bigata *Say.*

Diplodus.
luridus *Stal.*

Reduvius.
raptatorius *Say.*

CORISIDÆ.

Micropus.
leucopterus *DeGeer.*

Coreus.
tristis *DeGeer.*

Alydus.
eurinus *Say.*
spinosus *Say.*

Corisa.
interrupta *Say.*
alternata *Say.*

Cyrtosia.
marmorata *Say.*

Tryplops.
insidiosus *Say.*

Rhopalus.
lateralis *Say.*

Pentatoma.
tristigma *Harr.*
juniperi *Linn.*

Hurpactor.
cinctus *Fabr.*

Arma.
spinosa *Dall.*

Eurygaster.
alternatus *Say.*
Nicoletensis *Prov.*

Corimelæna.
unicolor *Beau.*
pulicaria *Beau.*

Perillus.
marginatus *Prov.*
circumcinctus *Stal.*

Podisus.
spinosus *Stal.*
cynicus *Say.*
modestus *Dall.*

Schirus.
cinctus *Beau.*

THRIPIDÆ.

Phlæothrips.
mali *Fab.*

Thrips.
cerealinum *Hal.*

CAPSINIDÆ.

Capsus.
invitus *Say.*
goniphorus *Say.*
4-vittatus *Say.*
dislocatus *Say.*
insignis *Say.*
bilincolus *Beau.*

Lygus.
lineolaris *Beau.*
dislocatus *Say.*
lineatus *Fab.*

Corizus.
nigrosternum *Sig.*

Henestris.
abbreviatus *Uhl.*

Lytocoris.
domesticus *Sch.*

Phylocoris.
scrupens *Say.*
una *Say.*
nubilis *Say.*

Miris.
dorsalis *Say.*
vicinus *Prov.*
viridis *Prov.*
Belangerii *Prov.*
ricinus *Prov.*

Mesocoris.
distinctus *Dall.*

Lophomorpha.
dolobriata *Gabr.*

Nabidea.
coracina *Uhler.*

Resthenia.
insitiva *Say.*

Cymus.
claviculus *Fall.*
resida *Panz.*

MEMBRANACEIDÆ.

Cimex.

lectularis Linn.
platychilus Uhler.
hirundinus Schaf.
pipistrella Jev.
columbarius Linn.

Tingis.

arcuata Say.
oblonga Say.
ciliata Say.

Aradus.

crinatus Say.
4-lineatus Say.
granulata Say.

Camptobrochis.

grandis Uhler.
nebulosus Uhler.

Rhopalotomus.

ater Linn.

Pamera.

una Say.

Cyllocoris.

scutellatus Uhler.

Pymata.

erosa Fab.

Zozmenus.

cinereus Say.

PEDICULINIDÆ.

Pediculus.

H-capitis DeGeer.
corporis Linn.

Hematopinus.

eurysternus Linn.
pillifrons Sch.
suis Linn.

Asini DeGeer.

spinulosus Linn.

Phthirus.

pubis Linn.

MALLOPHAGIDÆ.

Docophorus.

buteonis Pack.
hamatus Pack.

luridus DeGeer.

polytrapezius DeGeer.

Colpocephalum.

lari Pack.

Goniocotes.

Brunetti Pack.

Mirmus.

thoracicus Pack.
elongatus Linn.
fulicæ DeGeer.

Menopon.

pallidum Linn.

Lipeurus.

corvi Pack.
variabilis Linn.
elongatus Pack.
gracilis Pack.
baculus Linn.

Trichodectes.

canis DeGeer.
subrostratus DeGeer.
capræ Pack.

Goniodes.

stylifer Sm.

Docophorus.

icterodes DeGeer.

Families, 15; Genera, 121; Species, 232.

ORTHOPTERA.

FORFICULARIDÆ.

Labia.
minuta Scud.

BLATTARIDÆ.

Stylopyga.
orientalis Fisch.

pennsylvanica Linn.
germanica Steph.

pennsylvanica Linn.

Ectobia.
lithophila Har.

Periplaneta.
americana Linn.

Cryptocerus.
punctulatus Scud.

PHASMIDÆ.

Diaphemora.
femorata Say.

GRYLLIDÆ.

Æcanthus.
nivens DeGer.

Gryllus.
domesticus Oliv.
neglectus Scud.
niger Har.

Nemobius.
vittatus Har.
fasciatus Scud.
septentrionalis Scud.
exiguus Say.

Gryllotalpa.
borealis Burm.

LOOUSTARIDÆ.

Ceutophilus.
maculatus DeGeer.

Phylloptera.
oblongifolia DeGeer.

Orchelimum.
vulgare Har.
gracile Har.

Edeopsylla.
nigra Scud.

Conocephalus.
ensiger Har.

Xiphidium.
brevipennis Scud.
fasciatus Serv.

Phaneroptera.
curvicauda DeGeer.

ACRYDIDÆ.

Caloptenus.
bivittatus Uhl.
repletus Walk.
atlantis Riley.
scriptus Walk.
femur-rubrum Har.
bilituratus Walk.
spretus Uhl.

fasciatus Walk.
femoratus Burm.
extremus Walk.
parvus Prov.
arcticus Walk.
griseus Thorn.
borealis Fieb.

lurida Dodge.
occidentalis Thorn.

Acridium.
appendiculatum Uhl.

Acraptera.
lineata Scud.
gracilis Scud.

Cedipoda.

- carolina* *Burm.*
- phœnicoptera* *Germ.*
- sulphurea* *Burm.*
- squalis* *Uhl.*
- trifasciata* *Walk.*
- rugosa* *Scud.*
- verruculata* *Scud.*
- xanthoptera* *Scud.*
- pellucida* *Scud.*
- marmorata* *Uhl.*
- sordida* *Burm.*
- discoidea* *Serv.*
- neglecta* *Thos.*
- corallipes* *Hald.*
- collaris* *Scud.*
- cincta* *Thos.*

Brachypeplus.
magnus *Girard.*

Tragocephala

- infuscata* *Har.*
- viridifasciata* *Har.*

Stenobothrus.

- speciosus* *Scud.*
- curtipennis* *Scud.*
- longipennis* *Scud.*
- propinquans* *Scud.*

Chlœaltis.

- subhyalina* *Scud.*
- conspersa* *Har.*

Pezzotettix.

- obesa* *Thom.*
- Croftii* *Brodie.*
- septentrionalis* *Sass.*
- borealis* *Scud.*

- picta* *Thom.*
- speciosa* *Scud.*
- junius* *Dodge.*

Platyphyma.

- montana* *Thom.*

Tettix.

- cucullata* *Burm.*
- granulata* *Har.*
- ornata* *Say.*
- triangularis* *Scud.*

Tettigidea.

- lateralis* *Har.*
- polymorpha* *Burm.*

Batrachidea.

- cristata* *Har.*
- carinata* *Scud.*

Families, 6 ; Genera, 30 ; Species, 87.

NEUROPTERA.

PSOCIDÆ.

Psocus.
sparsus Hagen.
venosus Burm.
novæ-scotiæ Walk.

contaminatus Hagen.
striatus Walk.
canadensis Prov.
trifasciatus Prov.

auranticus Hagen.
salicis Fitch.
Atropos.
divinatorius Fabr.

PERLIDÆ.

Pteronarcys.
rectus Prov.
regalis Newm.
proteus Newm.
bicarinatus Prov.
Pictetii Hagen.
flavicornis Prov.

marginipes Prov.
navalis Prov.
riparia Prov.
sulcata Prov.
bilineata Say.
severa Hagen.
neica Prov.

Tæniopteryx.
fasciata Burm.
frigida Hagen.

Nemoura.
completa Walk.
albidipennis Walk.
perfecta Walk.
nigritta Prov.

Perla.
abnormis Newm.
rapinsularis Say.
quebecensis Prov.
hieroglyphica Prov.

Capnia.
minima Newm.
pygmæa Burm.

Isopteryx.
cydippe Newm.

Leuctra.
tenuis Prit.
ferruginea Walk.

EPHEMERIDÆ.

Ephemera.
simulans Walk.
natata Hagen.

Bætis.
interpunctata Say.
canadensis Walk.
femorata Say.

Cloe.
quebecensis Prov.
unicolor Hagen.

Palingenia.
limbata Serv.

Potamanthus.
cupidus Say.

AGRIONIDÆ.

Calopteryx.
splendans Selys.
virginica Drury.
maculata Beauv.

Ramburii Selys.
iners Hag.
postitum Hag.
saucium Burm.
canadense Prov.
civile Hag.
durum Hag.

fraternus Say.
parvulus Say.
exilis Selys.
colubrinus Selys.

Lestes.
unguiculata Hagen.
eurina Say.
disjuncta Say.
rectangularis Hagen.
forcipata Burm.

Gomphus.
fluvialis Walsh.
rupensulensis Walsh.
vastus Walsh.
spicatus Say.

Cordulegaster.
obliquus Say.
lateralis Scud.
Sayi Hagen.
maculatus Say.

Agriion.
irene Hagen.

Petalura.
Thoreyi Hag.

ÆSCHNIDÆ.

Æschna.
constricta Say.
verticalis Håg.

septentrionalis Ramb.
vinosa Say.
heros Say.

janata Say.

Anax.
Junius Say.

LIBELLULIDÆ.

Macromia.
transversa Say.
illinoisensis Walsh.

semiagrea Hag.
Uhleri Selys.
lateralis Burm.

Diplax.
frigida Burm.
rubicundula Say.
Berenice Drury.
scotica Don.
Elisa Hagen.
hudsonica Selys.
intacta Say.
obtrusa Say.
vicina Say.

Epithea.
albicincta Burm.
yamaskanensis Prov.
elongata Scud.
forcipata Scud.
princeps Hag.

Plathemis.
subornata Hag.
trimaculata DeGeer.

Libellula.
basalis Burm.
quadrinaculata Linn.
julia Burm.
pulchella Say.
exusta Say.
semifasciata Say.

Nannophya.
bella Uhl.

Cordulia.
libera Say.
Shurtleffii Rumb.
spinigera Hag.

SIALIDÆ.

Sialis.
infumata New.
Chauliodes.
serricornis Uhl.

maculatus Say.
angusticollis Say.
pectinicornis Linn.
lunatus Hag.

Corydalis.
cornuta Linn.

MANTISPIDÆ.

Mantispa.
brunnea Say.

HEMEROBIDÆ.

Hemerobius.
tutatrix Fitch.
simulans Walk.

Chrysopa.
oculata Say.
externa Say.
illepida Fitch.
albicornis Fitch.
transmarina Hag.
chi Fitch.
upsilon Fitch.

latipennis Schneid.
nigricornis Burm.
plorabunda Fitch.

Polystæchotes.
punctatus Fab.

Myrmeleon.
abdomenalis Say.
obsoletus Say.

PANORPIDÆ.

Panorpa.
rufescens Ramb.
debilis West.
nebulosa West.

Bittacus.
strigosus Hag.
pilicornis West.

Boreus.
nivoriundus Fitch.

