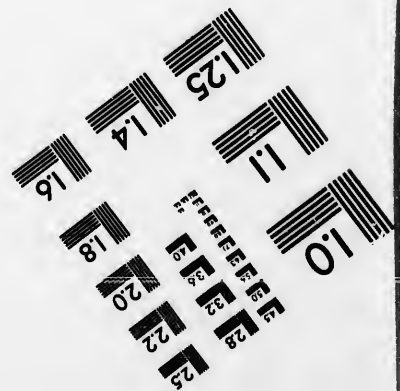
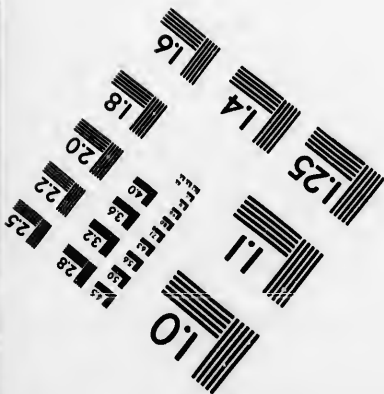
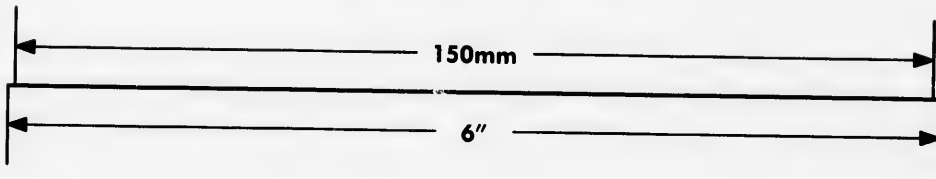
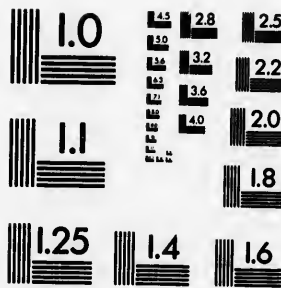
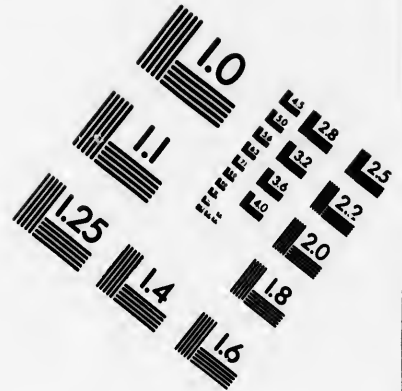
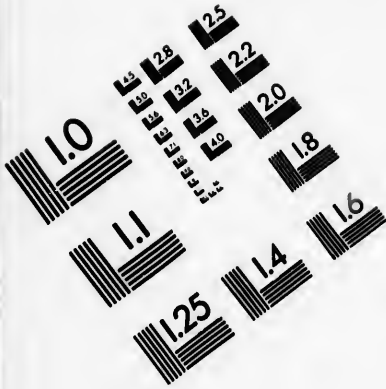


IMAGE EVALUATION TEST TARGET (MT-3)



APPLIED IMAGE, Inc
 1653 East Main Street
 Rochester, NY 14609 USA
 Phone: 716/482-0300
 Fax: 716/288-5989

© 1993, Applied Image, Inc., All Rights Reserved

**CIHM
Microfiche
Series
(Monographs)**

**ICMH
Collection de
microfiches
(monographies)**



Canadian Institute for Historical Microreproductions / Institut canadien de microreproductions historiques

© 1993

The copy filmed here has been reproduced thanks to the generosity of:

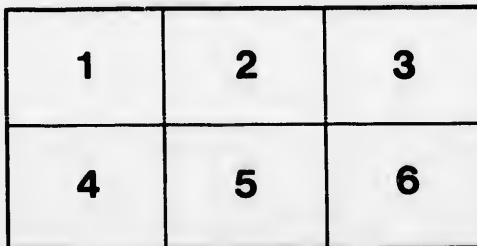
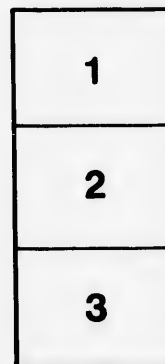
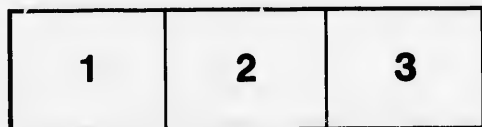
National Library of Canada

The images appearing here are the best quality possible considering the condition and legibility of the original copy and in keeping with the filming contract specifications.

Original copies in printed paper covers are filmed beginning with the front cover and ending on the last page with a printed or illustrated impression, or the back cover when appropriate. All other original copies are filmed beginning on the first page with a printed or illustrated impression, and ending on the last page with a printed or illustrated impression.

The last recorded frame on each microfiche shell contain the symbol \rightarrow (meaning "CONTINUED"), or the symbol ∇ (meaning "END"), whichever applies.

Maps, plates, charts, etc., may be filmed at different reduction ratios. Those too large to be entirely included in one exposure are filmed beginning in the upper left hand corner, left to right and top to bottom, as many frames as required. The following diagrams illustrate the method:



L'exemplaire filmé fut reproduit grâce à la générosité de:

Bibliothèque nationale du Canada

Les images suivantes ont été reproduites avec le plus grand soin, compte tenu de la condition et de la netteté de l'exemplaire filmé, et en conformité avec les conditions du contrat de filmage.

Les exemplaires originaux dont la couverture en papier est imprimée sont filmés en commençant par le premier plat et en terminant soit par la dernière page qui comporte une empreinte d'impression ou d'illustration, soit par le second plat, selon le cas. Tous les autres exemplaires originaux sont filmés en commençant par la première page qui comporte une empreinte d'impression ou d'illustration et en terminant par la dernière page qui comporte une telle empreinte.

Un des symboles suivants apparaîtra sur la dernière image de chaque microfiche, selon le cas: le symbole \rightarrow signifie "A SUIVRE", le symbole ∇ signifie "FIN".

Les cartes, planches, tableaux, etc., peuvent être filmés à des taux de réduction différents. Lorsque le document est trop grand pour être reproduit en un seul cliché, il est filmé à partir de l'angle supérieur gauche, de gauche à droite, et de haut en bas, en prenant le nombre d'images nécessaire. Les diagrammes suivants illustrent la méthode.

Programme

- AND -

Prize List

- OF -

TOURNAMENT

- IN -

BAYFIELD,


- ON -

Dominion Day,

JULY 2, '94.

Celebration

(SEAFORTH SUN PRINT.)

RIVER HOTEL and  SUMMER RESORT.

Choice Liquors and Cigars. Good Stable and
Hostler.

Fine View of River and Lake. Tourists and Visitors.

H. D. SWARTS, Proprietor.

PRIZE LIST.

NO. 1

Calithumpian Procession

1st,	\$3.00
2nd,	2.00

NO. 2

Foot-Ball Match.

\$5.00

NO. 3.

Putting Stone.

1st	\$1.50
2nd	75

THE QUEEN'S HOTEL.



Refurnished and Renovated,
Old Patrons Solicited,
Good Point for Visitors.

J. POLLLOCK, Proprietor.

IST.

ision

\$3.00

2.00

ch.

e.

\$1.50

75

NO. 4

Sack Race.

1st	.	.	.	75c
2nd	.	.	.	50c

NO. 5

Foot Race,

150 yards.

1st	.	.	.	\$1.50
2nd	.	.	.	75c

NO. 6

Boys Foot Race

under 17 years.

1st	.	.	.	75c
2nd	.	.	.	50c

The Farmer's Store.

Groceries, Boots and Shoes, Flour
and Feed.

SPECIAL--Fine Japan Tea, 15c lb.

All kinds of Farm Produce taken in exchange.

Bayfield.
JOHN WHIDDON.

ace.

75c
50c

ce,

\$1.50
75c

ace

75c
50c

NO. 7

Boys Foot Race

under 13 years.

1st	-	50c
2nd	-	25c

NO. 8

Girls Foot Race

under 13 years.

1st	-	50c
2nd	-	25c

NO. 9

Foot Race,

half mile distance.

1st	-	\$2.00
2nd	-	\$1.00

CEO. ELW LN, FROP

THE - COMMERCIAL - TEMPERANCE - HOTEL.

**The Leading Summer Boarding House
a First-Class Restaurant in
Connection.**

Good Stabling.

GEO. ERWIN, Prop

Race

rs.

50c
25c

Race

rs.

50c
25c

\$2.00
\$1.00

NO. 10

Old Mens Race,

55 years and over.

1st	\$1.25
2nd	\$1.00

NO. 11

Allaboard Race,

100 yards.

\$1.50

NO. 12

Standing Jump.

1st	\$1.25
2nd	75c

Miss M. J. Martin, Bayfield,

—DEALER IN—

Fancy Goods Dry Goods, Groceries.
Berlin Wools and Wall Papers a speci-
alty. Ice Cream and Fruit.

Race,

\$1.25
\$1.00

Race,

mp.

\$1.25
75c

NO. 13

Running Jump.

1st	\$1.25
2nd	75c

NO. 14

Standing High Jump.

1st	\$1.25
2nd	75

NO. 15

Hop Step and Jump

1st	\$1.25
2nd	75

NO. 16

Sawing Match.

1st	\$3.00
2nd	\$1.00

The - Best - Hardware - Store

West of Toronto.

Tin Work and Tinware.

Bayfield.

R. ROUATY.

Jump.

\$1.25
75c

Jump.

\$1.25
75

ump

\$1.25
75

ch.

\$6.00
\$1.00

NO. 17

Sawing Match

(LOCAL.)

1st	\$4.00
2nd	2.00

NO. 18

Bicycle Race,

4 Miles.

1st	\$5.00
2nd	\$4.00

In Plate.

NO. 19

Bicycle Race

Novice

2 Miles

1st	\$5.00
2nd	\$3.00

Match

\$4.00

2.00

Race,

\$5.00

\$4.00

ce

ovice

\$5.00

\$3.00

Hurrah! The Big Gun Again.

PRICES BROKE UP.

SUGAR, SOAP and TOBACCO.

Bayfield.

J. BURNS & CO.

NO. 20.

Tug of War,

Stanley, Goderich, &c., &c.

\$5.00

NO. 21

Obstacle Race

1st	\$4.00
2nd	\$2.00

NO. 22

Horse Trotting

1 mile best 2 in 3

1st	\$10.00
2nd	\$5.00

War,

&c., &c.

Race

\$4.00

\$2.00

ng

\$10.00

\$5.00

GARDEN PARTY,

ON Monday Evening, July 2nd,

TRINITY CHURCH PARSONAGE.

GOOD BAND IN ATTENDANCE,

NO. 23

Horse Running.

1 mile best 2 in 3.

1st	\$5.00
2nd	\$2.00

NO. 24

Sailing Race Boat

1st
2nd
3rd

NO. 25

Rowing Race

1st
2nd

Hurrush ! The Big Gun Again.

Prices don't tell, gone.

Biscuits, Cheese and Candy.

Bayfield.

J. BURNS & CO.

anning.

3.

\$5.00

\$2.00

Boat

ce

NO. 26

Dog Race In Harness

1st	\$3.00
2nd	\$2.00

NO. 27

Quoit Match

\$5.00



ALBION

E. ELLIOTT,
Proprietor.

BAYFIELD,
Ontario.

HOTTEL.

The Bar is supplied with the Best
Wines, etc., and the Table with every
Luxury. Commodious Sample Rooms.

arness

\$3.00

\$2.00

tch

Good Enough--The Big Gun Again.

Prices Rock Bottom.

Crockery and Glass Ware.
Bayfield.

J. BURNS & CO.

STATIONERS AND PRINTERS

John Frazer, Cheap Store,

Dry Goods, Groceries,

Hardware, Flour and Feed

**Our Waggon will call on Customers
Regularly in the Country**

BURNS & CO.

PHILADELPHIA

Regulations.

NO. 15

Entrance :- Fee

10 per cent. except Nos.

1 2 6 7 and 8

NO. 20

Three to Enter or No. 2nd
Purse.

NO. 21

Five to Enter or No. 3rd
Purse.

NO. 18

Driver to hold horse by fore-
lock, on word "go" to harness,
hitch to rig, no snaps, to walk
1st $\frac{1}{2}$ mile, trot 2nd $\frac{1}{2}$ mile, and
go as you please the 3 $\frac{1}{2}$ mile.

NOS. 1 and 2

Take place at 10:30 a. m. on
Square. Other sports on Fair
Grounds. Commencing at 1
p. m. sharp.

HA ! HA ! HA !

THE BIG GUN AGAIN.

Prices up Spout.

BOOTS and SHOES from 15 cents up.

J. BURNS & CO., Bayfield.

Fee

8

No. 2nd

No. 3rd

by fore-
ariness,
o walk
ile, and
½ mile.

m. on
n Fair
at 1

**Ho! Ho! Ho! The Big Gun Again.
Old Prices Knocked to Pieces.**

**Bayfield.
Oils--Machine and Coal Oil.**

J. BURNS & CO.

PHOTOS.

Wm. D. Trott, Photographer, Seaforth and Brussels, Makes the best Photos in the County of Huron. Noted for artistic effects and fine finish.

My work is giving entire satisfaction to people who have not been suited anywhere else. Give me a trial.

A fine stock of Picture Frames and Framed Pictures kept on hand.

Scott's Block, Seaforth.

Cooks' Old Stand, Bayfield.

CO & S. N. B. J.

PHOTOGRAPH

The Ladies Know

—THAT—

H. F. Edwards

Carries the best stock of Prints, (5c up.) Mus-
lins Satens, Dress Goods and Staple Dry Goods,
at the lowest prices.

Cashmeres a Specialty.

BAYFIELD - MILLS.

Go to Thomson's Mill for

CHEAP GRINDING and SAWING.

Will grind for 4c per Bag and Saw for
\$2 50 per M. Lumber and Shingles on
hand.

J. THOMSON, Proprietor.

J. Tipper



Leading Harness
Maker.

Collars a
Specialty.

BAYFIELD.

H. DRAMMEN,


Fashionable Tailor.

Good Fit and Work
Guaranteed.

... ..
\$2 50 per M. Lumber and Shingles on
hand.
J. THOMSON, Proprietor.

... ..
Cashmeres a Specialty.

... ..
at the lowest prices.

The Big Cun. 

Twelve Pounds Tea for One
Dollar.

Bayfield.

J. BURNS & CO.

Hellow Peggy! Here's the Big Gun again

All kinds of Canned Goods for Pic-nics.
Meats and Fruits. Prices lower than ever.

Bayfield.

J. BURNS & CO.

J. BURNS & CO.

Bayfield.

**Young Man You Are
Wanted.**

H. F. Edwards

Wants to sell you a New Suit. The best values in Tweeds and Pantings to be found in the county.

Suits to order from \$8.50 up.

**Saw, Chop
and
Shingle
Mills.**

**Full Blast. Stock Cut
Shortest Notice.**

Balloons : Go : Up

But Prices have gone down.

If you want a New Hat (Felt or Straw,) Shirts,
Ready Made Pants, Braces, Ties, or any other
Gents Furnishings go to

H. F. Edwards.

Special :—The Star Top Shirt at 75c regular
price \$1.00.

MISSES WHIDDON

and **PARKER,**

**Fashionable Dress
Makers**

**Millinery of all kinds
on hand.**

**Full Blast. Stock Cut
Shortest Notice.**

Suits to order from \$8.50 up.

and in the county.

Bolivar! Big Cuvn Again.

Good Bye, Adieu. Prices lower than
ever. Oranges, Lemons and fresh Fruit
of all kinds from the tropics.

Bayfield.

J. BURNS & CO.

GET MARRIED

THEN COME AND BUY YOUR

BED ROOM
SUITES,

Parlor Suites,

And other Furniture at the New Furniture and Undertaking Store. Call and see our stock.

ERWIN Brothers.

R. U. READY

THEN GO TO


H. J. EDWARDS,

For Choice Groceries.

He Buys in large quantities for Cash and is therefore able to give Close Prices. Call in.

BURNS & CO.

REAR

H. Kemp 

Practical

Watchmaker

and Jeweler.

Agent for the Bran-
ford Bicycle Co'y.

H. G. WELLEN,

G. T. R. TICKET AGENT.

MAIN STREET, SEAFORTH, ONTARIO

Tickets Reading via Toronto and Short Line over
Canadian Pacific Railway to all points in Manitoba
and the North-west.

Agent for all the Railways in the United States.

Agent for the Allan, White Star, Inman, Anchor, State,
Cunard and Beaver Steamship lines.

Call and see me. No trouble to give information.

H. Kemp

- 75 50
14. High Jump.
15. Married Women's Race
16. Sawing Match per
1.50 1.00
17. Football Match.
18. Baseball Match.

8 pm. So



