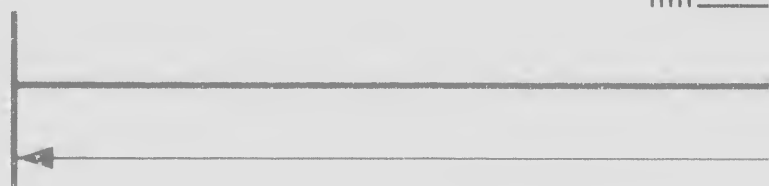
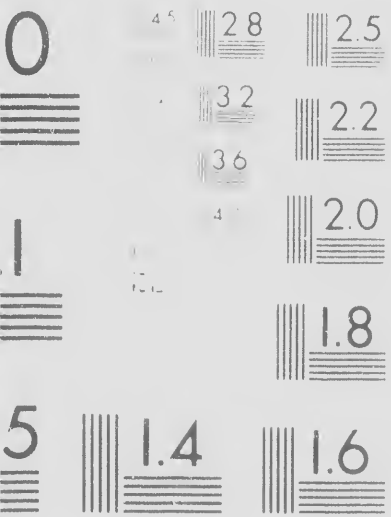
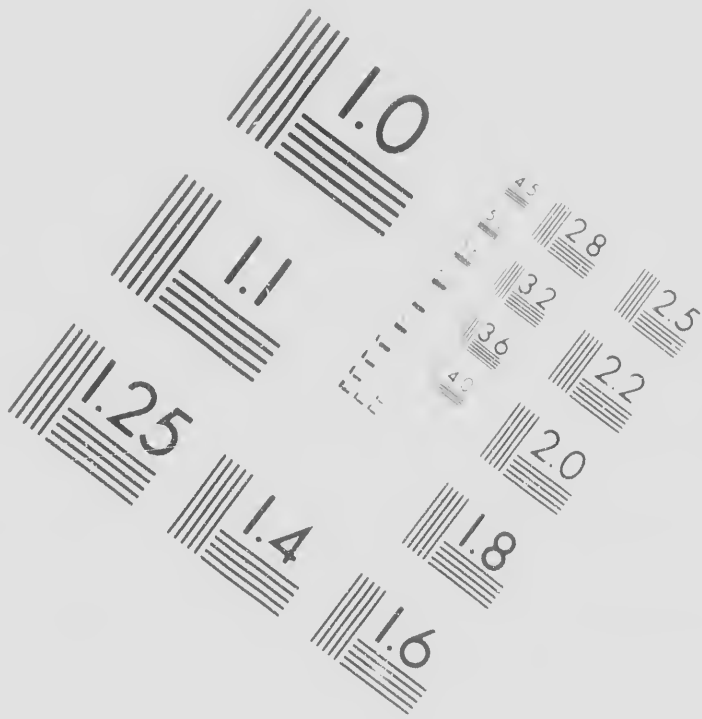


IMAGE
TEST T



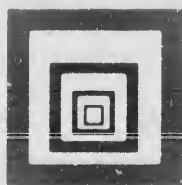
EVALUATION TARGET (MT-3)



6"

**CIHM/ICMH
Microfiche
Series.**

**CIHM/ICMH
Collection de
microfiches.**



Technical and Bibliographic Notes/Notes techniques

The Institute has attempted to obtain the best original copy available for filming. Features of this copy which may be bibliographically unique, which may alter any of the images in the reproduction, or which may significantly change the usual method of filming, are checked below.

L'Institut a tenté d'obtenir le meilleur exemplaire original disponible pour le tournage. Les caractéristiques de ce exemplaire qui peuvent être bibliographiquement uniques, qui peuvent modifier n'importe quel des points de la reproduction, ou qui peuvent modifier de façon importante la méthode habituelle de tournage, sont indiquées ci-dessous.

- | | | |
|--------------------------|--|--------------------------|
| <input type="checkbox"/> | Coloured covers/
Couverture de couleur | <input type="checkbox"/> |
| <input type="checkbox"/> | Covers damaged/
Couverture endommagée | <input type="checkbox"/> |
| <input type="checkbox"/> | Covers restored and/or laminated/
Couverture restaurée et/ou pelliculée | <input type="checkbox"/> |
| <input type="checkbox"/> | Cover title missing/
Le titre de couverture manque | <input type="checkbox"/> |
| <input type="checkbox"/> | Coloured maps/
Cartes géographiques en couleur | <input type="checkbox"/> |
| <input type="checkbox"/> | Coloured ink (i.e. other than blue or black)/
Encre de couleur (i.e. autre que bleue ou noire) | <input type="checkbox"/> |
| <input type="checkbox"/> | Coloured plates and/or illustrations/
Planches et/ou illustrations en couleur | <input type="checkbox"/> |
| <input type="checkbox"/> | Bound with other material/
Relié avec d'autres documents | <input type="checkbox"/> |
| <input type="checkbox"/> | Tight binding may cause shadows or distortion
along interior margin/
La reliure serrée peut causer de l'ombre ou de la
distorsion le long de la marge intérieure | <input type="checkbox"/> |
| <input type="checkbox"/> | Blank leaves added during restoration may
appear within the text. Whenever possible, these
have been omitted from filming/
Il se peut que certaines pages blanches ajoutées
lors d'une restauration apparaissent dans le texte,
mais, lorsque cela était possible, elles ont été
omises de la prise en compte. | <input type="checkbox"/> |

iques et bibliographiques

itut a microfilmé le meilleur exemplaire
ui a été possible de se procurer. Les détails
t exemplaire qui sont peut-être uniques du
de vue bibliographique, qui peuvent modifier
mage reproduite, ou qui peuvent exiger une
fication dans la méthode normale de filmage
ndiqués ci-dessous.

Coloured pages/
Pages de couleur

Pages damaged/
Pages endommagées

Pages restored and/or laminated/
Pages restaurées et/ou pelliculées

Pages discoloured, stained or foxed/
Pages décolorées, tachetées ou piquées

Pages detached/
Pages détachées

Showthrough/
Transparence

Quality of print varies/
Qualité inégale de l'impression

Includes supplementary material/
Comprend du matériel supplémentaire

Only edition available/
Seule édition disponible

Pages wholly or partially obscured by errata
lips, tissues, etc., have been refilmed to
nsure the best possible image/
es pages totalement ou partiellement
bscurcies par un feuillet d'errata, une pelure
tc., ont été filmées à nouveau de façon à
btenir la meilleure image possible

The copy filmed here has been made available
to the generosity of:

Library of Congress
Photoduplication Service

The images appearing here are the best possible
possible considering the condition of the original copy and in keeping with
of the original copy and in keeping with the
filming contract specifications.

Original copies in printed pages are
beginning with the front cover and ending with
the last page with a printed or illustrated impression, or the back cover when
other original copies are filmed. The first page with a printed or illustrated
impression, and ending on the last page with a printed or illustrated
or illustrated impression.

Maps, plates, charts, etc., are filmed at
different reduction ratios. They are
entirely included in one exposure, beginning
beginning in the upper left hand corner, and
right and top to bottom, as required. The following diagram
method:



en reproduced thanks

gress
tion Service

are the best quality
dition and legibility
eeping with the
ns.

per covers are filmed
ver and ending on
or illustrated impres-
n appropriate. All
ned beginning on the
llustrated impres-
page with a printed

may be filmed at
hose too large to be
losure are filmed
hand corner, left to
many frames as
grams illustrate the

L'exemplaire filmé fut reproduit grâce à la
générosité de:

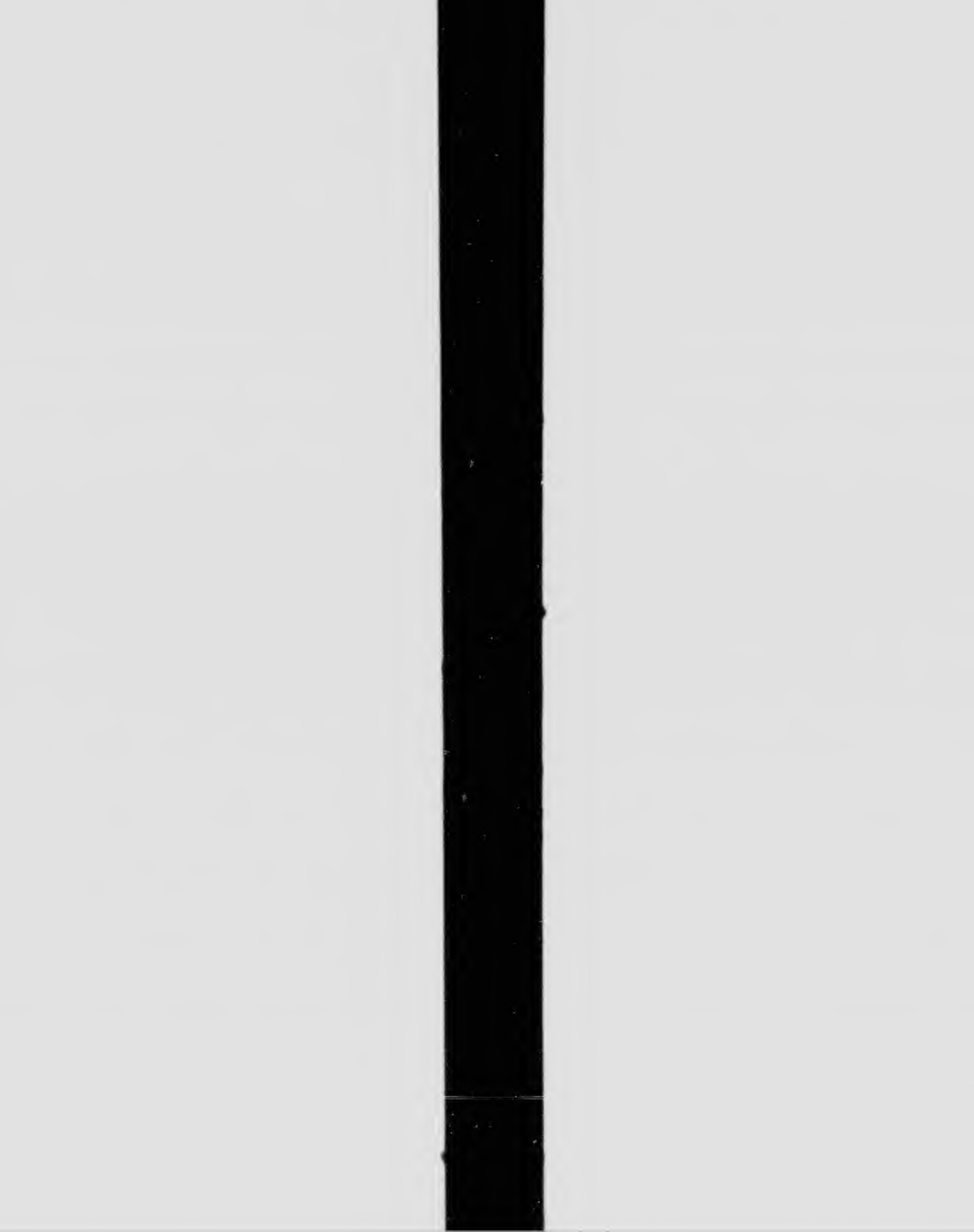
Library of Congress
Photoduplication Service

Les images suivantes ont été reproduites avec le
plus grand soin, compte tenu de la condition et
de la netteté de l'exemplaire filmé, et en
conformité avec les conditions du contrat de
filmage.

Les exemplaires originaux dont la couverture en
papier est imprimée sont filmés en commençant
par le premier plat et en terminant soit par la
dernière page qui comporte une empreinte
d'impression ou d'illustration, soit par le second
plat, selon le cas. Tous les autres exemplaires
originaux sont filmés en commençant par la
première page qui comporte une empreinte
d'impression ou d'illustration et en terminant par
la dernière page qui comporte une telle
empreinte.

Les cartes, planches, tableaux, etc., peuvent être
filmés à des taux de réduction différents.
Lorsque le document est trop grand pour être
reproduit en un seul cliché, il est filmé à partir
de l'angle supérieur gauche, de gauche à droite,
et de haut en bas, en prenant le nombre
d'images nécessaire. Les diagrammes suivants
illustrent la méthode.





At a Special
held he
made th
of Tra

"THAT All
to any Port
United Sta
Ports of t
Ports of
Enemy, a
Colonial
Duties to
the Ports
this King
from the
the Ports
an Order
have been
America ;
Port in An
before No
and the 10
they had
From the
after Noti

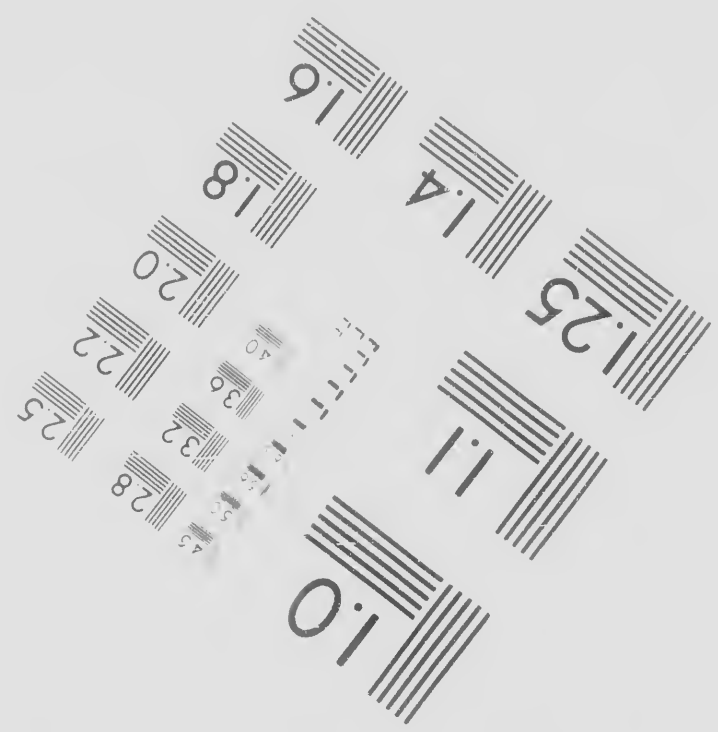
Board Ves

City of London Times, Dec 21, 1862, p. 107.

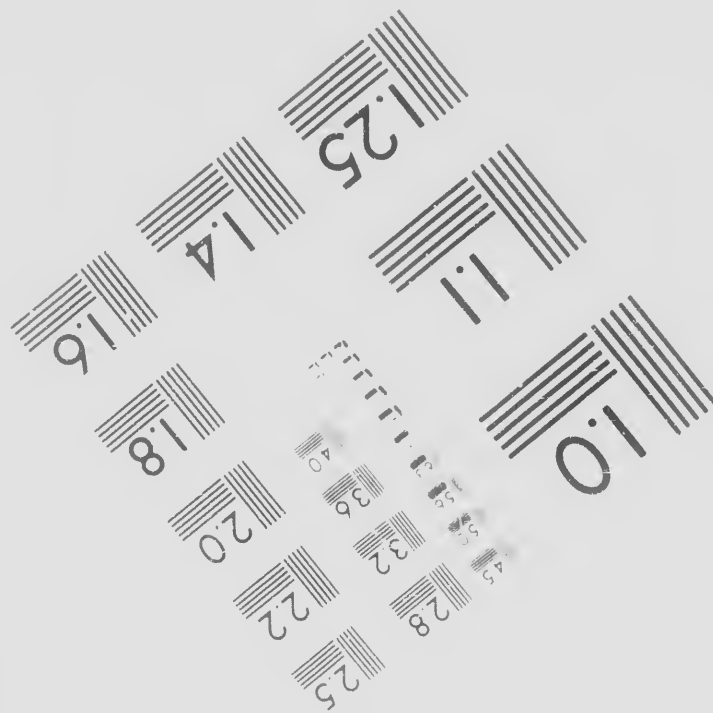
General MEETING of the COMMITTEE of AMERICAN MERCHANTS, held on this Day, *Pratt* Esq. Chairman, in the Chair, the Chairman read the following Report from the Sub-Committee appointed to attend the Board of Trade on the subject of the proposed Orders in Council:—

American Vessels may proceed direct from the Ports of the United States to the Ports of the Enemy in *India*—American Vessels may proceed from the Ports of the United States to the Ports of the Colonies belonging to the Enemy, and direct back to the United States. The Order does not prohibit them from going direct from this Kingdom to the Colonial Ports in the West India Islands belonging to the Enemy, and it is not intended to prevent them from proceeding from this Kingdom with Colonial Produce to the Enemy's Ports, whenever Parliament shall have decided on the Regulations to be imposed on such Exportation—American Vessels may continue to trade from the Ports of this Kingdom to the Ports of the Enemy, and from the Ports of the Enemy to the Ports of this Kingdom, and from the Ports of his Majesty's Allies to the Enemy's Ports, but not from the Enemy's Ports to the Ports of His Majesty's Allies, direct, nor from America to the Ports of his Majesty's Allies, with Colonial Produce. There is Reason to believe that the Orders in Council will issue, regulating the Periods at which Notice shall be considered to have been received of the Orders in Council, of the 11th instant, in the United States of America, by which Regulation, Vessels that shall have cleared, or shall clear, out from any Port in America, before the 20th of January next shall be considered to have cleared out in compliance with Notice of the Order; and Vessels, which shall clear out between the 20th of January and the 10th of February, will be liable to be detained, subject to the Question, whether they have begun to be laden before Notice had arrived at the Port from whence they sailed. From the 10th of February, all American Vessels will be considered as having begun to be laden in compliance with Notice, and will thereby be subject to the Provisions of the aforesaid Order.

“Certificates of Origin” will not be required to be delivered up, which may be on board American Vessels which shall have sailed previous to the Notice of this Order, at any Port from



Photogra
Scienc
Corpora



23 WEST MAIN STREET
WEBSTER, N.Y. 14580
(716) 872-4503

aphic
ces
ation



© 1986

ques

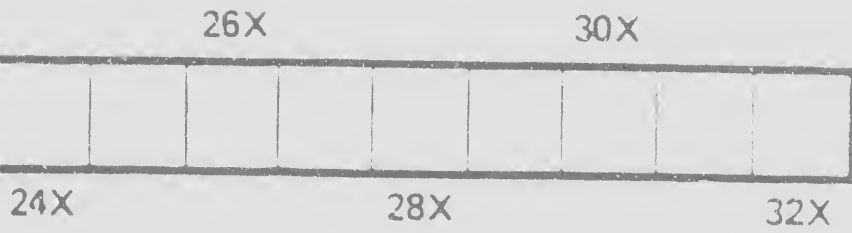
Blank leaves added during restoration may appear within the text. Whenever possible, these have been omitted from filming/
Il se peut que certaines pages blanches ajoutées lors d'une restauration apparaissent dans le texte, mais, lorsque cela était possible, ces pages n'ont pas été filmées.

Additional comments: / CIHM no. 60561
Commentaires supplémentaires.

This item is filmed at the reduction ratio checked below /
Ce document est filmé au taux de réduction indiqué ci-dessous.

10X			12X	14X		16X	18X		20X		22X		

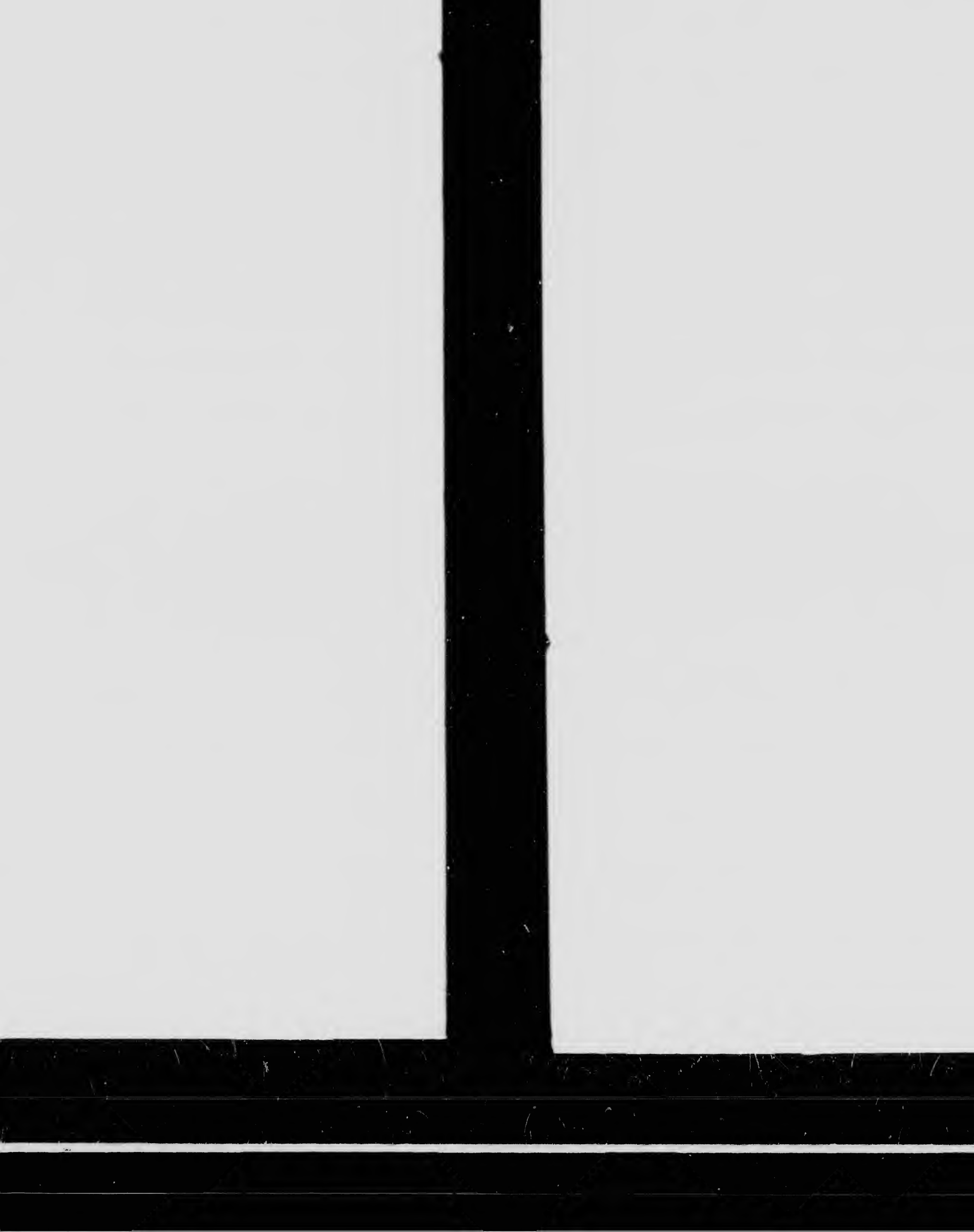
lips, tissues, etc., have been refilmed to
ensure the best possible image/
es pages totalement ou partiellement
obscurcies par un feuillet d'errata, une pelure
etc., ont été filmées à nouveau de façon à
obtenir la meilleure image possible



2	3
---	---

1
2
3

1	2	3
4	5	6



From the
after Notice

Board Yes
whence th

portation
exception
Colonies
Manufact
Neutral
on the sam

Prison

with the

Lanc. Darby
Leadenhall Str

... of February, an American vessel will be considered as having been captured, and will thereby be subject to the Provisions of the aforesaid Act.

"Certificates of Origin" will not be required to be delivered up, till the arrival of vessels which shall have sailed previous to the Notice of this Order, at the place from which they sailed.

There is also Reason to believe that no Duty is intended to be laid on the Import of any Articles which are the Produce of the State of Georgia, or the Province of Carolina; and that the Trade between this Country and the latter, so far as it is carried on by Neutrals, will be regulated by Licence, and subject to the Export Duties which are now in force, until the Meeting of Parliament; and that the Trade between the Colonies of the East and the West Indies, and the Colonies of the West Indies, will be placed on the same Footing.

And, That the above Report be published for the Information of all Persons concerned in the American Trade.

JOHN GRAV, Secretary.

and Co.
Printers.

