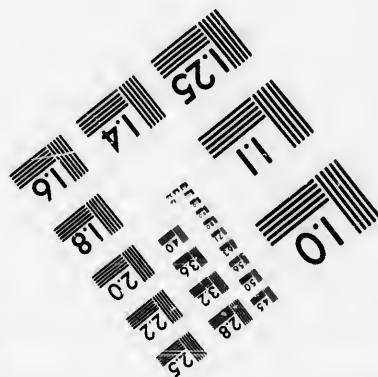
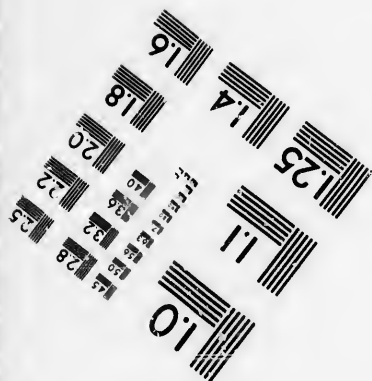
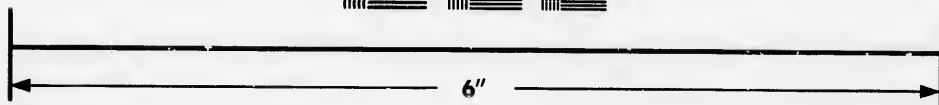
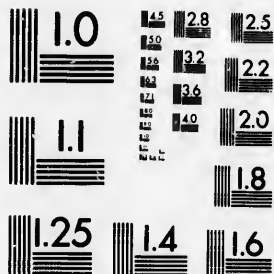


**IMAGE EVALUATION
TEST TARGET (MT-3)**



**Photographic
Sciences
Corporation**

23 WEST MAIN STREET
WEBSTER, N.Y. 14580
(716) 872-4503



**CIHM/ICMH
Microfiche
Series.**

**CIHM/ICMH
Collection de
microfiches.**



Canadian Institute for Historical Microreproductions / Institut canadien de microreproductions historiques



© 1986

Technical and Bibliographic Notes/Notes techniques et bibliographiques

The Institute has attempted to obtain the best original copy available for filming. Features of this copy which may be bibliographically unique, which may alter any of the images in the reproduction, or which may significantly change the usual method of filming, are checked below.

L'Institut a microfilmé le meilleur exemplaire qu'il lui a été possible de se procurer. Les détails de cet exemplaire qui sont peut-être uniques du point de vue bibliographique, qui peuvent modifier une image reproduite, ou qui peuvent exiger une modification dans la méthode normale de filmage sont indiqués ci-dessous.

- | | |
|--|--|
| <input type="checkbox"/> Coloured covers/
Couverture de couleur | <input type="checkbox"/> Coloured pages/
Pages de couleur |
| <input type="checkbox"/> Covers damaged/
Couverture endommagée | <input checked="" type="checkbox"/> Pages damaged/
Pages endommagées |
| <input type="checkbox"/> Covers restored and/or laminated/
Couverture restaurée et/ou pelliculée | <input type="checkbox"/> Pages restored and/or laminated/
Pages restaurées et/ou pelliculées |
| <input type="checkbox"/> Cover title missing/
Le titre de couverture manque | <input checked="" type="checkbox"/> Pages discoloured, stained or foxed/
Pages décolorées, tachetées ou piquées |
| <input type="checkbox"/> Coloured maps/
Cartes géographiques en couleur | <input type="checkbox"/> Pages detached/
Pages détachées |
| <input type="checkbox"/> Coloured ink (i.e. other than blue or black)/
Encre de couleur (i.e. autre que bleue ou noire) | <input checked="" type="checkbox"/> Showthrough/
Transparence |
| <input type="checkbox"/> Coloured plates and/or illustrations/
Planches et/ou illustrations en couleur | <input type="checkbox"/> Quality of print varies/
Qualité inégale de l'impression |
| <input type="checkbox"/> Bound with other material/
Relié avec d'autres documents | <input type="checkbox"/> Includes supplementary material/
Comprend du matériel supplémentaire |
| <input type="checkbox"/> Tight binding may cause shadows or distortion
along interior margin/
La reliure serrée peut causer de l'ombre ou de la
distorsion le long de la marge intérieure | <input type="checkbox"/> Only edition available/
Seule édition disponible |
| <input type="checkbox"/> Blank leaves added during restoration may
appear within the text. Whenever possible, these
have been omitted from filming/
Il se peut que certaines pages blanches ajoutées
lors d'une restauration apparaissent dans le texte,
mais, lorsque cela était possible, ces pages n'ont
pas été filmées. | <input type="checkbox"/> Pages wholly or partially obscured by errata
slips, tissues, etc., have been refilmed to
ensure the best possible image/
Les pages totalement ou partiellement
obscurcies par un feuillet d'errata, une pelure,
etc., ont été filmées à nouveau de façon à
obtenir la meilleure image possible. |
| <input checked="" type="checkbox"/> Additional comments: [Printed ephemera] [4] p.
Commentaires supplémentaires: | |

This item is filmed at the reduction ratio checked below/
Ce document est filmé au taux de réduction indiqué ci-dessous.

10X	12X	14X	16X	18X	20X	22X	24X	26X	28X	30X	32X
								✓			

The copy filmed here has been reproduced thanks to the generosity of:

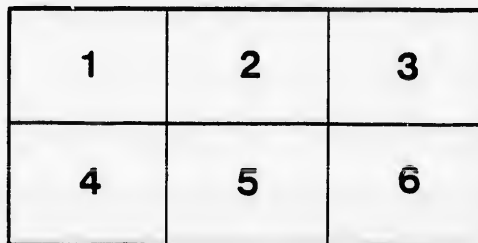
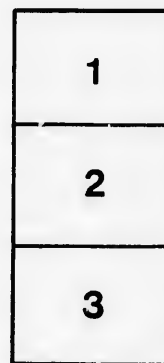
D. B. Weldon Library
University of Western Ontario
(Regional History Room)

The images appearing here are the best quality possible considering the condition and legibility of the original copy and in keeping with the filming contract specifications.

Original copies in printed paper covers are filmed beginning with the front cover and ending on the last page with a printed or illustrated impression, or the back cover when appropriate. All other original copies are filmed beginning on the first page with a printed or illustrated impression, and ending on the last page with a printed or illustrated impression.

The last recorded frame on each microfiche shall contain the symbol \rightarrow (meaning "CONTINUED"), or the symbol ∇ (meaning "END"), whichever applies.

Maps, plates, charts, etc., may be filmed at different reduction ratios. Those too large to be entirely included in one exposure are filmed beginning in the upper left hand corner, left to right and top to bottom, as many frames as required. The following diagrams illustrate the method:



L'exemplaire filmé fut reproduit grâce à la générosité de:

D. B. Weldon Library
University of Western Ontario
(Regional History Room)

Les images suivantes ont été reproduites avec le plus grand soin, compte tenu de la condition et de la netteté de l'exemplaire filmé, et en conformité avec les conditions du contrat de filmage.

Les exemplaires originaux dont la couverture en papier est imprimée sont filmés en commençant par le premier plat et en terminant soit par la dernière page qui comporte une empreinte d'impression ou d'illustration, soit par le second plat, selon le cas. Tous les autres exemplaires originaux sont filmés en commençant par la première page qui comporte une empreinte d'impression ou d'illustration et en terminant par la dernière page qui comporte une telle empreinte.

Un des symboles suivants apparaître sur la dernière image de chaque microfiche, selon le cas: le symbole \rightarrow signifie "A SUIVRE", le symbole ∇ signifie "FIN".

Les cartes, planches, tableaux, etc., peuvent être filmés à des taux de réduction différents. Lorsque le document est trop grand pour être reproduit en un seul cliché, il est filmé à partir de l'angle supérieur gauche, de gauche à droite, et de haut en bas, en prenant le nombre d'images nécessaire. Les diagrammes suivants illustrent la méthode.

GRAND OPERA HOUSE

C. J. WHITNEY
LESSEE

A. E. ROOTE
MANAGER

PROGRAMME

LONDON
ONT.

No Fault is Found

Even by the most critical customers with our large assortment of Fall Suitings and Overcoatings, and you can't find fault with our prices or the fit we give you. Come in and see us.

DEEKS & CO.

TAILORS,
393 Richmond Street

OFFICE RESTAURANT

D. SARE, Proprietor

Best Wines, Liquors and Cigars

always on hand. Full course Dinner from 12 to 2.

HOT MEALS per order, at all hours.

OYSTERS, in any style,
every day of the year.

We appreciate your patronage, and always do what's right.

BREAD

IS THE STAFF
OF LIFE

Too much care cannot be given to the selection of **PURE, WHOLESOME** and **CLEANLY MADE BREAD.**

"**EUREKA**" Bread needs only a trial to convince you. Manufactured by

PARNELL-DEAN
STEAM BAKING CO.

LIMITED

Telephone 929. 75 BRUCE ST.

SEASON 1898-9



FRIDAY, NOVEMBER 11th, 1898



THE GEISHA

.....AND THE.....

GEISHA ORCHESTRA

The Original Production from Daly's Theatre,
London and New York, under the

DIRECTION OF D. W. TRUSS & CO.

Words by Owen Hall. Music by Sidney Jones.
Lyrics by Henry Greenbank.

OVERATURE, "GEISHA"
Wm. Robinson, Conductor.

NOTICE

The limited space unrented in this Programme may be applied for at the Box Office. You read this, so would your advertisement be read. Keep yourself and business before the public. Theatre patrons are good customers for most business men.

SMITH BROS.

STEAM, GAS and
HOT WATER
FITTERS

PLUMBERS

265 Dundas Street
Telephone 538

LONDON

THIS PROGRAMME

IS FROM THE PRESS OF

Heal & Fleming

172 KING STREET

WE SOLICIT YOUR
PATRONAGE



TELEPHONE
874

THE LONDON FLORAL CO'Y

... DEALERS IN ...

All Kinds of

“CUT” FLOWERS

And Decorative Plants.

Theatre Parties a Specialty. **249 Dundas Street.**

PHONE 493.

SMOKE VIRGINIA THE ONLY HONEST 5c CIGAR SOLD
H. McKENNA, 225 DUNDAS STREET.



You Contemplate Wedding



WHY not have the latest ideas? In catering we can save you trouble and expense. Are you giving a Bicycle Party, an At Home or Social? We offer inducements that are irresistible. Our Soda Water and Jersey Ice Cream has no equal. Our candies and Confectionery made fresh daily. If you wish dressed fowl or meats of any variety, leave your order with us, we can supply you on shortest notice. Oysters served in every style. Lunch rooms open till 12 p.m.

SPECIALTIES: Salads and Puddings, Hot and Cold Luncheons.
 SENT TO ANY PART OF THE CITY.

SHORT BROS.
 Phone 491 220 Dundas Street

Stroyan's Mammoth Livery

BOARDING AND SALE STABLES

Phone No. 503



Open Day and Night

HACKS, COUPES AND LIGHT LIVRY
 A. G. STROYAN, Proprietor

CALL THE USHER WHEN IN WANT OF CAB OR COUPE

Full Line of ... LONDON VIEWS
...SOUVENIRS...

Useful Wedding and Birthday Presents

Yeo's China Hall

177 DUNDAS STREET

China and Glass Goods for all household purposes.
 You are invited to call and inspect our new fall stock of Fancy China.



Cast of Characters.

The Marquis Imari, Governor of the Province.....H. W. Tredenick
 Lieutenant Katana, of the Imperial Japanese Artillery.....Albert Arling Parr
 Police Sergeant Takemini.....W. H. Romafne
 Wun-Hi, of the Tea House of Ten Thousand Joys... Charles Danby
 Buyers.....Messrs. Ogle, Clark, McNaughten and Aulsbrook
 O. Mimosa San, a Gelsa.....Miss Helen Royton
 Juliette, a French Girl.....Miss Alexia Bassan
 Nami.....Miss Ilma Pratt
 O. Hana San.....Mousme
 O. Kiku San.....Attendants on the Tea House
 O. Kinkoto San.....Miss Carollyn Servies
 Komarosaki.....Miss Winifred Williams
 Miss Edith Knapp
 Miss Cassie Knight
 Chorus of Attendants, Mousme Officers, etc.
 ENGLISH VISITORS.

Lieut. Reginald Fairfax.....Leonard Walker
 Dick Cunningham.....Will T. Ellwanger
 Hon. Gerald St. Pancras.....Arthur Stanford
 Arthur Cuddy.....Charles Holly
 Tommy Stanley M. dy.....Miss Amelie Baird
 Lady Constance Wayne.....Miss Jennie C. Towler
 Miss Marie Worthington.....Miss Ella Rock
 Miss Ethel Hurst.....Miss May Norton
 Morthy Sweet.....Miss Leona Amrose
 Mollie Seanore.....Miss Minnie Ashley



Phone 897...

J. ELLIOTT HOLMES, L.D.S.

DENTIST

OFFICE: ROOM 3, DUFFIELD BLOCK, LONDON.
 Cor. Dundas and Clarence Sts.

The Queen...



of Autumn
 REIGNS SUPREME

J. GAMMAGE & SONS

THE MAINE

Thing at the present is

DEWEY

Laundry your Shirts, Collars, Cuffs and Handkerchiefs—if not, why not give us a trial and you won't

HAV-ANA

more laundered elsewhere.

THE PARISIAN STEAM LAUNDRY CO.

OF ONTARIO, LIMITED

73-75 DUNDAS STREET,

J. K. SPRY, Manager.

PHONE 559

FAIRBAIRN

Opposite City Hall
 UP-STAIRS

The Tailor

If you have your own cloth, bring it to me and I will make it up in the best possible style at a reasonable cost.

Fall Suits and Overcoats

Prices sure to suit you as well as fit.
 A CALL SOLICITED.

FAIRBAIRN, The Tailor

Opposite City Hall Richmond Street.

THAT WORD

“BEST”

Means much in coaldom. Some kinds—the kind we have—gives more heat to the ton than others. Some (ours) burns to a powdery ash, giving out all the sort of heat desired. Others (we don't keep it), turns to clinkers and causes trouble and annoyance.

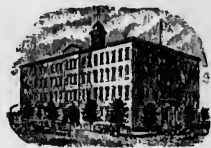
TRY A TON AND SEE.

CAMERON'S

YARD—Burwell and G. T. R. OFFICE—Hiscox Building

THE TEGUMSEH

LONDON, ONT.



FIRST-CLASS
IN ALL
APPOINTMENTS.

SPECIAL RATES
FOR COMPANIES

CHAS. W. DAVIS,
Proprietor

"WE WALK!"

"WE DANCE!"

We Walk to Protect Labor. We Dance to Enjoy Ourselves.
Everybody else should do the same.

It is no trouble to learn to walk at present, and we guarantee it will be no trouble to learn to dance, if you only call and make arrangements at the

New Palace Dancing Academy

422 RICHMOND STREET

COMPETENT TEACHERS. LIBERAL TERMS.
Gentlemen, Monday Ev'g; Ladies, Tuesday Ev'g, at 8 o'clock. Children, Saturday Afternoon, at 3 o'clock.

DAYTON & McCORMICK.

King Richard III

IS NOT AT RICHMOND.

H. L. PEINE

Proprietor

 Richmond Hotel

Is there and supplies his patrons with the best of everything.....

SPECIAL RATES TO THEATRICAL CO'S

F. H. BUTLER

Stock Broker

STOCKS, GRAINS AND PROVISIONS bought and sold for cash or on margin. Private wires to New York Stock Exchange and Chicago Board of Trade. Toronto and Montreal Stock Exchange quotations received by wire.

LONG DISTANCE TELEPHONE 1278

15-16 Masonic Temple, London

GOING ...THE... ADVERTISER

SIGNS, BANNERS
and WALL WORK 578 RICHMOND ST

E. J. PEARCE

Successor to E. J. BURKE
521 RICHMOND STREET

FULL LINE
Amateur
Supplies
ALWAYS
IN STOCK



A Man Wants to See You
BETWEEN ACTS, AT



JERRY McDONALD'S
131 KING STREET



SYNOPSIS.

26

Act I—Scene—The Tea House of Ten Thousand Joys.
Songs—"The Amorous Goldfish," "The Kissing Duet," "Jack's the Boy," "The Dear Little Jappy Jap Jappy," "The Toy Duet," "Chon Kina, Chon Kina."

ACT II—Scene—A Chrysanthemum Fete in the Palace Gardens. Songs—"The Monkey on a Stick," "The Jewel of Asia," "The Parrot and the Canary," "Mollie Mine."

Time—The Present.

The action of the play takes place in Japan outside Treaty Limits.

EXECUTIVE STAFF.

Roland G. Pray.....Business Manager
George H. Miller.....Acting Manager
Chas. Holly.....Stage Director
Albert Wilson.....Master Carpenter
Clarence Ball.....Master of Properties
Tony Moore.....Electrician
Miss Woods.....Wardrobe Mistress

The Famous Bell Orchestral Piano

IS USED EXCLUSIVELY IN THIS THEATRE.



Spiritual Meeting

WILL BE HELD IN

K. of P. HALL, S. W. Cor. Dundas and Clarence Sts.

SUNDAY AFTERNOON, AT 2:45 O'CLOCK

LECTURE AND TESTS BY H. M. FRENCH.

Come and see the phenomenon of Spiritualism demonstrated. We give sittings daily at our home, 260 Talbot street, from 10 to 5; also give a complete diagnosis of your disease, and an astrological reading of life, and put you on the road to success.

Come and See Us Without Fail.

ESTABLISHED 1880.



T. FOX

THE ORIGINAL PAWNBROKER
LENDS MONEY

On DIAMONDS, WATCHES, JEWELRY and WEARING APPAREL, Etc. All business strictly private and confidential.
383 AND 385 CLARENCE ST.

P.S.—Unredeemed Watches, Diamond Rings, Guns, Revolvers, and Musical Goods on hand. Theatrical Costumes for sale or hire.

For Rent

COMING!

SATURDAY, NOV. 12th

MATINEE AND NIGHT.

MR. DAVID HIGGINS

AND

Miss GEORGIE WALDRON

In the beautiful play of Southern life,

At Piney Ridge

A romance of the mountains and villages of East Tennessee, with a wealth of beautiful scenery and effects.

A Production Complete in Every Detail

PRICES.

Matinee—Children 25c, Adults 50c.
Night—25c, 50c and 75c. Seats now on sale.

Office open from 9 a. m. to 9 p. m.
Doors open for matinees at 2. p.m.;
curtains rises 2.30 p. m.

Evenings.—Doors open at 7.30; and
curtains rises at 8.15 p. m. sharp.

Tickets can be reserved two days in
advance without extra charge.

Seats can be secured by mail, tele-
phone or telegraph. Telephone 732.

Carriages can be ordered at the Box
Office or of the chief usher.

For all lost articles, apply at the
Box Office.

Physicians are requested to register
at the Box Office, leaving seat number,
as this will enable Ushers to find them,
if called for, without disturbing the
audience.

Children in arms not admitted to
to evening performances. Children
three years old or over, full price.

It is strange, but there is a class of
people that seem to take an intense
delight in bespattering the floor with
tobacco juice, and in being boisterous
and using profane language. These
people should know at once that the
courts authorize their immediate ex-
pulsion, should the management see
fit to exercise its rights.

Coming Soon

Victorian Cross

Stranger In New York

Primrose & Dockstader's
Minstrels

Two Little Vagrants

Finnegan's Ball

Jack and the Beanstalk



If the individual members of an
audience would stop to think for just
an instant, they would undoubtedly
appreciate the fact that the habit of
rising from their seat and leaving the
theatre before the curtain falls, is a
most annoying one, and one that
should be stopped. We therefore beg
our audiences to kindly remain in their
seats until the close of the perform-
ance.

