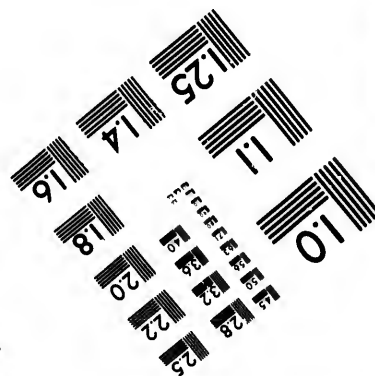
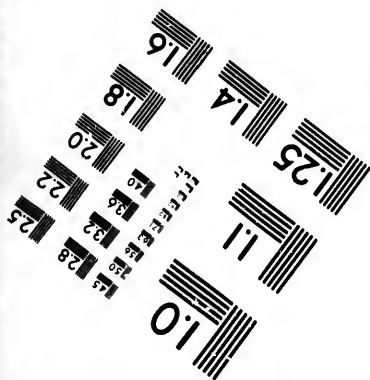
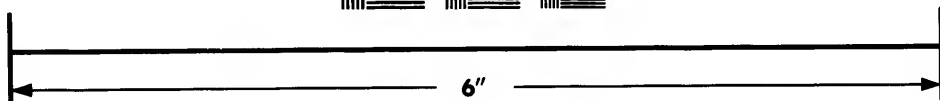
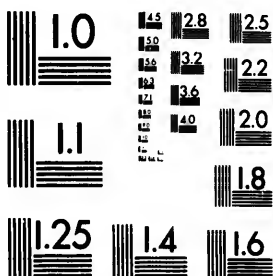


**IMAGE EVALUATION
TEST TARGET (MT-3)**



**Photographic
Sciences
Corporation**

23 WEST MAIN STREET
WEBSTER, N.Y. 14580
(716) 872-4503

28
22
25
20

**CIHM/ICMH
Microfiche
Series.**

**CIHM/ICMH
Collection de
microfiches.**



Canadian Institute for Historical Microreproductions / Institut canadien de microreproductions historiques

01

© 1987

Technical and Bibliographic Notes/Notes techniques et bibliographiques

The Institute has attempted to obtain the best original copy available for filming. Features of this copy which may be bibliographically unique, which may alter any of the images in the reproduction, or which may significantly change the usual method of filming, are checked below.

L'Institut a microfilmé le meilleur exemplaire qu'il lui a été possible de se procurer. Les détails de cet exemplaire qui sont peut-être uniques du point de vue bibliographique, qui peuvent modifier une image reproduite, ou qui peuvent exiger une modification dans la méthode normale de filmage sont indiqués ci-dessous.

Coloured covers/
Couverture de couleur

Covers damaged/
Couverture endommagée

Covers restored and/or laminated/
Couverture restaurée et/ou pelliculée

Cover title missing/
Le titre de couverture manque

Coloured maps/
Cartes géographiques en couleur

Coloured ink (i.e. other than blue or black)/
Encre de couleur (i.e. autre que bleue ou noire)

Coloured plates and/or illustrations/
Planches et/ou illustrations en couleur

Bound with other material/
Relié avec d'autres documents

Tight binding may cause shadows or distortion along interior margin/
La reliure serrée peut causer de l'ombre ou de la distorsion le long de la marge intérieure

Blank leaves added during restoration may appear within the text. Whenever possible, these have been omitted from filming/
Il se peut que certaines pages blanches ajoutées lors d'une restauration apparaissent dans le texte, mais, lorsque cela était possible, ces pages n'ont pas été filmées.

Additional comments:/
Commentaires supplémentaires:

Coloured pages/
Pages de couleur

Pages damaged/
Pages endommagées

Pages restored and/or laminated/
Pages restaurées et/ou pelliculées

Pages discoloured, stained or foxed/
Pages décolorées, tachetées ou piquées

Pages detached/
Pages détachées

Showthrough/
Transparence

Quality of print varies/
Qualité inégale de l'impression

Includes supplementary material/
Comprend du matériel supplémentaire

Only edition available/
Seule édition disponible

Pages wholly or partially obscured by errata slips, tissues, etc., have been refilmed to ensure the best possible image/
Les pages totalement ou partiellement obscurcies par un feuillet d'errata, une pelure, etc., ont été filmées à nouveau de façon à obtenir la meilleure image possible.

This item is filmed at the reduction ratio checked below/
Ce document est filmé au taux de réduction indiqué ci-dessous.

10X	12X	14X	16X	18X	20X	22X	24X	26X	28X	30X	32X
					/						

The copy filmed here has been reproduced thanks to the generosity of:

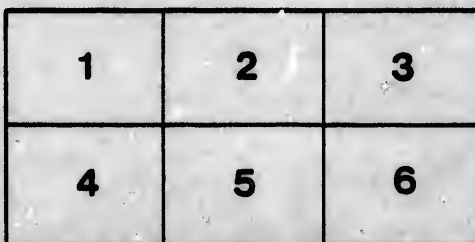
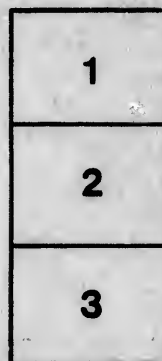
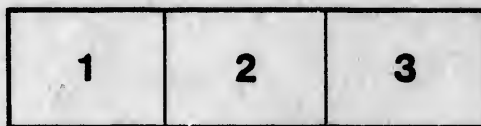
D. B. Weldon Library
University of Western Ontario
(Regional History Room)

The images appearing here are the best quality possible considering the condition and legibility of the original copy and in keeping with the filming contract specifications.

Original copies in printed paper covers are filmed beginning with the front cover and ending on the last page with a printed or illustrated impression, or the back cover when appropriate. All other original copies are filmed beginning on the first page with a printed or illustrated impression, and ending on the last page with a printed or illustrated impression.

The last recorded frame on each microfiche shall contain the symbol \rightarrow (meaning "CONTINUED"), or the symbol ∇ (meaning "END"), whichever applies.

Maps, plates, charts, etc., may be filmed at different reduction ratios. Those too large to be entirely included in one exposure are filmed beginning in the upper left hand corner, left to right and top to bottom, as many frames as required. The following diagrams illustrate the method:



L'exemplaire filmé fut reproduit grâce à la générosité de:

D. B. Weldon Library
University of Western Ontario
(Regional History Room)

Les images suivantes ont été reproduites avec le plus grand soin, compte tenu de la condition et de la netteté de l'exemplaire filmé, et en conformité avec les conditions du contrat de filmage.

Les exemplaires originaux dont la couverture en papier est imprimée sont filmés en commençant par le premier plat et en terminant soit par la dernière page qui comporte une empreinte d'impression ou d'illustration, soit par le second plat, selon le cas. Tous les autres exemplaires originaux sont filmés en commençant par la première page qui comporte une empreinte d'impression ou d'illustration et en terminant par la dernière page qui comporte une telle empreinte.

Un des symboles suivants apparaîtra sur la dernière image de chaque microfiche, selon le cas: le symbole \rightarrow signifie "A SUIVRE", le symbole ∇ signifie "FIN".

Les cartes, planches, tableaux, etc., peuvent être filmés à des taux de réduction différents. Lorsque le document est trop grand pour être reproduit en un seul cliché, il est filmé à partir de l'angle supérieur gauche, de gauche à droite, et de haut en bas, en prenant le nombre d'images nécessaire. Les diagrammes suivants illustrent la méthode.

210-97
to the
lower mag.
SP.

VOTERS' LIST

—OF THE—

Township of Delaware,

1897.

The Sheriff shall, immediately upon the receipt of his copies, cause one of them to be posted up in a conspicuous place in the Court House; the Clerk of the Peace, upon the receipt of his copies, shall cause one of them to be posted up in a conspicuous place in his office; every Public or Separate School Head Master or Mistress shall post one of his or her copies on the door of the school house; and every Post Master shall post up one of his copies in his Post Office. 39 VIC., CHAP. II., SEC. 2.



VOTERS' LIST

— FOR THE —

Township of Delaware

FOR 1897.

SCHEUDLE OF POST OFFICES.

- | | |
|----------------|-----------------------|
| 1.—DELAWARE. | 5.—CALDER. |
| 2.—LAMBETH. | 6.—TALBOTVILLE. |
| 3.—BYRON. | 7.—RAPER. |
| 4.—TEMPO. | 8.—SOUTHWOLD STATION. |
| 9.—LITTLEWOOD. | |

Polling Sub-Division, No. 1,

Comprising all the lands in the Township of Delaware lying East of 2nd
Concession Line and North of Lot 8. Polling in S. H. in S. S. No. 1.

PART I.—Persons entitled to vote at both Municipal elections
and elections to the Legislative Assembly.

Jur.	No. on Roll.	NAME.	Concession.	LOT.	Other Description.	Occu- pation.	P. O.
j	412	Blashill, Joshua.....	3	pt 7	M F and O	Far	1
j	413	Blashill, Tyndall....	3	pt 7, 8	M F and O	Far	1
j	423	Bradt, James.....	2	pt 3, 2	M F and O	Far	1
j	344	Brayford, Joseph....	Gore	pt D	M F and O	Far	3
j	436	Blackwell, James....	4	pt 6	M F and O	Far	
j	377	Bourne, James.....	Gore	E B B	M F and O	Lab	3
j	419	Benkhe, Charles....	2	pt 4	M F and O	Far	1
j	351	Baker, Mr.....	Gore	pt D	M F and O	Far	1
j	352	Boker, Mr.....	Gore	pt D	M F and O	Far	1

Jur.	No. on Roll.	NAME.	Concession.	LOT.	Other Description.	Occupation.	P.O.
	332	College, W W	4	pt 1	M F and O	Far	3
j	333	College, Andrew	4	pt 1	M F and O	Far	3
j	331	College, Thomas	4	pt 2	M F and O	Far	3
	429	Colvin, Andrew, sr	4	pt 5, 6	M F and O	Far	1
	375	Comfort, Albert	Gore	King	M F and O	Butch	3
j	366	Culver, Alfred	Gore	pt A	M F and O	Far	1
j	430	Colvin, Alex	3	pt 6	M F and O	Far	1
j	360	Cook, Henry	3	pt 2	M F and O	Far	
j	444	Christy, William	4	pt 7, 8	M F and T	Far	2
j	430	Colvin, William	3	pt 6	M F and O	Far	1
j	437	Clary, John	3	pt 5, 6	M F and T	Far	1
	400	Clement, Mr	1, 2	pt 6, 7	M F and T	Far	1
	464	Clement, Mr	1, 2	pt 6, 7	M F and T	Far	1
j	453	Deadman, Alfred	4	pt 5, 6	M F and O	Far	2
	452	Deadman, A G	4	pt 5, 6	M F and O	Far	2
j	457	Deadman, W H	4	pt 5, 6	M F and O	Far	2
	420	Dowling, Samuel	2	pt 3	M F and O	Far	1
j	386	Doyle, William	2	pt 1	M F and O	Far	1
j	373	Dow, John	Gore	King	M F and O	Far	3
j	373	Dow, Peter	Gore	King	M F and T	Far	3

TOWNSHIP OF DELAWARE.

3

No. on Roll.	NAME.	Concession.	LOT.	Other Description.	Occupation.	P.O.
j 341	Elson, Warren	Gore	pt D	M F and O	Far	3
j 467	Eichenbergher, Fred	2	pt 5	M F and O	Far	1
j 353	Evans, Chas	Gore	pt A E	M F and T	Far	1
j 414	Elvidge, Henry	2	pt 6, 7	M F and T	Far	1
j 359	Elvidge, Ed	Gore	pt C	M F and O	Far	3
j 468	Eichenbergher, John	2	pt 5	M F and O	Far	1
j 438	Fyke, Lorenzo	4	pt 5	M F and O	Far	2
j 439	Fyke, Augustus	4	pt 5	M F and O	Far	2
356	Fonger, George	Gore	pt C	M F and O	Far	3
j 355	Fonger, Richard	Gore	pt C	M F and O	Far	3
j 451	Fenwick, John	4	pt 7	M F and O	Far	2
j 382	Fonger, Fred	Gore	pt A E	M F and T	Far	1
j 465	Forsyth, J W	2	pt 5	M F and T	Far	1
j 435	Gilbert, David	3	pt 7	M F and T	Far	1
436	Gilbert, Abraham	3	pt 7	M F and O	Far	1
j 368	Grantham, William	Gore	pt A E	M F and O	Far	3
j 393	Gilders, Samuel	2	pt 2	M F and O	Far	1
j 394	Gilders, Edward	2	pt 2	M F and O	Far	1
j 410	Granger, Mr	2	pt 7	M F and T	Far	1
j 421	Gilders, George	3	pt 3	M F and O	Far	1
j 371	Heywood, John, jr	s West	pt 1	M F and O	B M	3
j 472	Humphrey, W H	4	pt 3	M F and O	Far	3

Jur.	No. on Roll.	NAME.	Concession.	LOT.	Other Description.	Occupation.	P.O.
j	398	Hammond, John . . .	2	pt 6	M F and O	Far	2
j	426	Heatley, William . . .	2	pt 4	M F and O	Far	1
j	369	Humphrey, H V . . .	Gore	pt A	M F and O	Far	3
j	415	Hunt, Squire	2	pt 6	M F and O	Far	1
	385	Hull, J D	Gore	pt A E	M F and O	Far	1
j	385	Hull, Arthur	Gore	pt A E	M F and O	Far	1
j	425	Hooper, John	3	pt 4	M F and O	Far	1
j	379	Heywood, Tom . . .	W C Rd	C	M F and O	B M	3
j	414	Hubbard, F	2	pt 7	M F and T	Lab	1
j	416	Hammond, James . .	2	pt 6	M F and T	Far	1
j	389	Ireland, John	Gore	pt A E	M F and O	Far	2
j	455	Ireland, Walter	4	pt 4	M F and O	Far	2
j	446	Ireland, Stelman . . .	4	pt 4	M F and O	Far	2
j	378	Joyce, Edward	n Kg st		M F and O	Lab	2
j	428	Kennedy, Thomas . . .	2	pt 5	M F and O	Far	1
j	348	Kilbourne, Robert, Jr	Gore	pt C D	M F and O	Far	3
j	345	Kilbourne, Burley . .	Gore	pt D	M F and O	Far	3
j	345	Kilbourne, Samuel . .	Gore	pt D	M F and O	Far	3
j	339	Kilbourne, Tim M . .	Gore	pt D	M F and O	Far	3
j	376	Kilbourne, Harvey . .	Gore	n King	M F and O	B M	3
j	346	Kilbourne, A B	Gore	pt D	M F and O	Far	3
j	349	Kilbourne, Charles . .	Gore	pt D	M F and O	Far	3
j	357	Kilbourne, R	Gore	pt D	M F and O	Far	3

TOWNSHIP OF DELAWARE.

5

Int.	No. on Roll.	NAME.	Concession.	LOT.	Other Description.	Occupation.	P.O.
j	380	Leys, Arthur.....	B B & C	pt 5k	M F and T	Mer	3
	433	Long, C.....	3	pt 5, 6	M F and O	Far	1
		<i>Lockwood Daniel</i>	<i>4.</i>	<i>pt 4.</i>	<i>M F and T</i>	<i>Far</i>	<i>1</i>
j	449	McLellan, Edward..	4	pt 5, 6	M F and O	Far	2
j	437	McKay, Matthias...	3	pt 5, 6	M F and O	Far	1
j	362	Nichols, S. F.....	4	pt 4	M F and O	Far	2
	338	Ormond, Stephen...	Gore	pt D	M F and T	Far	3
j	342	O'Connor, Herbert,	Gore	pt D	M F and T	Far	3
j	390	Phillips, Ebenezer ..	3	pt 1	M F and O	Far	3
j	418	Paul, Robert.....	2	pt 4	M F and O	Far	1
j	469	Patrick, George.....	2	pt 5	M F and O	Far	1
	374	Quackinbosh, Rich'd	Gore	n King	M F and O	Lab	3
j	395	Reed, William	2	pt 2	M F and O	Far	1
i	396	Reed, Henry.....	2	pt 2	M F and O	Far	1
j	337	Robb, Joseph.....	1	G P D	M F and T	Far	3
		<i>Reed - Fred</i>	<i>3.</i>	<i>pt 11.</i>	<i>M F and T</i>	<i>Far</i>	<i>1</i>

AK

AK

AK

Jur	No. on Roll.	NAME.	Concession.	LOT.	Other Description.	Occupation	P.O.
j	387	Sinke, John.....	3	pt 1	M F and O	Far	1
j	388	Sinkie, Othuille.....	3	pt 1	M F and O	Far	1
j	389	Sinkie, Wm.....	3	pt 1	M F and O	Far	1
j	442	Scott, Wm.....	4	W 7	M F and O	Far	2
	391	Sharp, Andrew....	3	pt 2	M F and O	Far	1
	370	Sutton, Samuel.....	n King	B C	M F and O	Gent	4
j	440	Stephen, Robert....	3	pt 3, 4	M F and O	Far	2
j	358	Sifton, Crosier.....	Gore	pt B	M F and O	Far	2
j	422	Switzer, John.....	3	pt 3	M F and O	Far	1
	392	Sharpe, John, sr....	2	pt 1	M F and O	Far	1
j	391	Sharpe, Milton.....	3	pt 2	M F and T	Far	1
j	443	Schram, Wm.....	4	pt 5	M F and T	Far	2
j	392	Sharp, Dan.....	2	pt 1	M F and T	Far	1
j	448	Tye, Wm J.....	4	pt 7	M F and O	Far	2
j	427	Trouse, Robert....	2	pt 4	M F and O	Far	1
		<i>Trouse Robert Jr</i>	2	<i>pt 4</i>	<i>M F and O</i>	<i>Far</i>	<i>1</i>
j	441	Tyler, George.....	3	pt 4, 5	M F and O	Far	1
j	459	Taber, Wm.....	4	pt 3	M F and T	Far	2
j	351	Thompson, John...	Gore	pt C	M F and T	Far	1
j	458	Uptigrove, Geo. D..	4	pt 4	M F and O	Far	3

TOWNSHIP OF DELAWARE.

No. on Roll.	NAME.	Concession.	LOT.	Other Description.	Occupation.	P.O.
j 365	Woodhull, Frank...	Gore	pt A B	M F and O	Far	1
j 365	Woodhull, Clinton..	Gore	pt A B	M F and O	Far	1
j 352	Woodhull, Samuel..	Gore	pt A B	M F and O	Far	1
j 334	Whiting, Caleb	4	pt 1	M F and O	Far	3
j 432	Whitehead, Zenas ..	3	pt 5, 6	M F and O	Far	3
335	Ward, Mr.....	4	pt 1	M F and O	Far	1
	<i>Whitehead and Willet</i>	5	<i>pt 1</i>	<i>M F and O</i>	<i>Far</i>	<i>1</i>

OK

PART II.—Persons entitled to vote at Municipal elections only

No. on Roll.	NAME.	Concession.	LOT.	Other Description.	Occupation.	P.O.
472	Allen, Mrs	2	pt 6, 7	O		
381	Batman, Tom.....	Gore	pt C	O		
419	Benhke, Mrs C.....	2	pt 4	O		1
	<i>Benhke Sarah</i>	2	<i>pt 4</i>	<i>O</i>		<i>1</i>
463	Best, Mrs John.....	4	pt 3	O		
397	Crawford, Mrs.....	3	pt 1	O		3
	<i>Clement Sarah</i>	2	<i>pt 6, 7</i>	<i>O</i>		<i>1</i>
353	Duval, John.....	Gore	A E	O		3
460	Dawson, Mrs J.....	2	pt 6	O		1
412	Elvige, Mrs.....	2	pt 6, 7	O		1
470	Eichenbergher, Mrs S	2	pt 5	O		1
382	Fonger, Mrs E.....	Gore	pt A E	O		1

OK

[Handwritten scribble]

No. on Roll.	NAME.	Concession.	LOT.	Other Description.	Occupation.	P.O.
367	Hartnell, T J.....	Gore	pt A	O		
462	Hall, Ann Jane }	2	pt 6, 7	O		
463	Hall, Sarah... }					
458	Humphrey, W H...	4	pt 3	O	Far	4
	Hull, F J.....	3	pt 8	O	Far	1
448	Ireland, Mrs G.....	4	pt 4	O		4
445	Ireland, Ferg.....	4	pt 7, 8	O		4
444	Ireland, Miss H....	4	pt 4	O		4
450	Ireland, Pauline....	4	pt 4	O		4
469	Jermain, H.....	2	pt 5	O	Far	1
488	Kilbourne, Mrs M..	Gore	pt D	O		3
340	Kilbourne, Sarah...	Gore	pt D	O		3
380	Leys, Mrs.....	B C	pt 12, 13	O		3
414	Munce, John, jr....	2	pt 6	O		
450	McLellan, Harvey..	4	pt 6	O	M D	2
352	McConnell, Andrew.	Gore	pt A B	O		
464	Montieth, Albert....	1	pt 7	O		3
362	Noxel, Mrs E.....	3	pt 2	O		3
409	Nichols, Lary.....	2	pt 7	O	Far	
522	Nichols, H W.....	Gore	pt A E	O	Far	

TOWNSHIP OF DELAWARE.

9

No. on Roll.	NAME.	Concession.	LOT.	Other Description.	Occupation.	P.O.
376	Reynolds, John.....	s K st	12, 13	O		
471	Ralph, Ed.....	2	pt 6, 7	T	Far	
460	Uptigrove, Mrs.....	4	pt 4	O		3
431	Whitehead, K M....	3	pt 16	O		
431	Whitehead, Maggie..	3	pt 5, 6	O		1

PART III.—Persons entitled to vote at elections for the Legislative Assembly only:

No. on Roll.	NAME.	Concession.	LOT.	Other Description.	Occupation.	P.O.
545	Anderson, E.....	4	pt 10	M F S T		1
44	Brown, Henry.....	3	pt 3	M F	Far	2
470	Downing, J. H.....	4	pt 7	M F	Teach	3
354	Evans, Walter.....	Gore	pt A	M F	Far	1
473	Farrow, Charles ...	4	pt 6	M F	Far	1
365	Frost, Charles.....	Gore	pt A	M F	Far	3
473	Green, Lewis.....	3	pt 6	M F	Far	1
536	Gilders, Wm.....	2	pt 2	M F	Far	3

No. on Roll.	NAME.	Concession.	LOT.	Other Description.	Occupation. P.O.
<i>M</i> 372	Harris, Frank..... <i>Herbert Philip</i>	W st 3	pt 5, 6	M F H H <i>Gr.</i>	Far. 3 1
356	Kilbourne, Benj.....	Gore	pt D	M F	Far 1
<i>all</i> 459	McCarty, Wm..... <i>Mairs Christopher</i>	4 2	pt 4 4	M F and F <i>M.F. and Far</i>	1 1
338	Osmond, Hugh.....	Gore	pt D	M F and F	1
424	Seaton, Joseph.....	2	pt 2	M F	Far 1
<i>all</i> 397	Waterman, G. W.	3	pt 1	M F H H	1
<i>all</i> 431	Whitehead, Willet.	3	pt 5, 6	M F H H	Far 1
421	Winters, James.....	3	pt 3	M F	Far 1

Polling Sub-Division, No. 2.

Comprising all lands in the Township of Delaware lying North of Lot 13 and West of the 2nd Con. Line. Polling Place, Town Hall, Village of Delaware.

PART I.—Persons entitled to vote at both Municipal Elections and elections to the Legislative Assembly:

Jur.	No. on Roll.	NAME.	Concession.	LOT.	Other Description.	Occupation.	P.O.
j	9	Acres, Henry.....	w Main	10, 14	5 M F and O	Far	1
j	1	Ackland, John.....	E	pt 4	M F and O	Miller	1
j	476	Auld, John	E	1-	M F and T	Far	1
j	476	Auld, John.....	K	1, 3, D, 9	M F and T	Far	1
	153	Arthur, Wm.....	1	pt 6	M F and T	Far	1
j	100	Allen, Robert.....	6	pt 8	M F and T	Far	1
j	389	Bignell, Wm.....	2	pt 11	M F and O	Far	3
			1	pt 9			1
j	475	Blasdale, F.....	1	pt 9	M F and O	Far	1
j	490	Burt, Wm.....	1	pt w 1/2	11 M F and O	Far	1
	105	Bremner, Alex.....	D	pt 6	M F and O	Far	1
	78	Benhke, John.....	w Vic	11, 12	M F and O	Gard.	1
	94	Bell, Alex.....	s Harris	5	M F and O	Far	1
j	474	Bennett, Robert....	D	pt 11	M F and O	Tailor	1
j	123	Boles, Thomas.....	D	pt 6	M F and O	Far	1
j	126	Boles, W J.....	D	pt 7	M F and O	Far	1
j	90	Branton, Fred	n Harris	14	M F and O	Far	1
			D	pt 8			

Handwritten initials/signature

Jur.	No. on Roll.	NAME.	Concession.	LOT.	Other Description.	Occupation.	P.O.
j	491	Burt, Tom.....	I	w 1/2 11	M F and O	Far	I
j	52	Bodkin, N.....	n K	12	M F and O	Mer	I
j	73	Bodkin, Edwin.....	e K st	25	M F and O	Clerk	I
	53	Cullen, James.....	w M	1, 2	M F and T	Mer	I
j	101	Cummings, Geo....	I	pt 5	M F and O	Far	I
<i>al</i>	60	Cox, John.....	D	pt K 3	M F and T	Builder	I
j	140	Cudney, Wm.....	D	Park 6	M F and T	Lab	I
	102	Cornell, Bruin.....	I	pt 5	M F and O	Far	I
<i>al</i>	137	Clarke, A E.....	3	pt 11	M F and T	Far	I
<i>al</i>	j 142	Cudney, Geo.....	I	pt 1, 2	M F and O	Far	I
		<i>Clement-Morris</i>	<i>1-4 2.</i>	<i>pt 647</i>	<i>M. Land. T.</i>	<i>Far.</i>	<i>I</i>
j	139	Davis, Mr.....	I	pt 3	M F and T	Far	I
	2	Dennis, Thomas....	w Main	12, 15	M F and O	Gent	I
j	3	Dennis, John.....	w Main	12, 15	M F and O	Clerk	I
j	4	Dennis, Chas.....	w Main	12, 15	M F and O	S M	I
j	500	Eichenberger, Jacob.	D	pt 12	M F and O	Far	I
j	62	Elsie, Robert.....	D	pt 4	M F and O	Cooper	I
	90	Flawn, Wm.....	s Harris	26	M F and O	Far	I
j	86	Foslett, John.....	s Harris	8	M F and O	Far	I
	46	Forsyth, John.....	e York	31, 32	M F and O	Lab	I

TOWNSHIP OF DELAWARE

13

No. on Roll.	NAME.	Concession.	LOT.	Other Description.	Occupation.	P.O.
j 47	Forsyth, Wm	e York	31, 32	M F and O	Lab	i
103	Fish, Robert	i	pt 5	M F and O	Far	i
j 103	Fish, Wm	i	pt 5	M F and T	Far	i
j 32	Fonger, Wallace	n P st	5	M F and O	Baker	i
j 128	Gibson, Richard	D	4	M F and O	Far	i
j 541	Garnet, Henry	i	10	M F and T	Far	i
j 506	George, Thomas W	D	pt 12	M F and O	Far	i
79	Granger, Augustus	s Harris	75, 77	M F and O	Far	i
j 18	Hammond, Henry	{ P K s King	{ 7, 8 2	} M F and O	Mer	i
j 19	Hammond, R C	{ P K s King	{ 7, 8 2			
j 20	Hammond, John	{ P K s King	{ 7, 8 2	} M F and O	Mer	i
j 82	Hothan, John	n Harris	15			
j 122	Holmes, T F	D	pt 7	M F and O	Far	i
j 127	Hay, Walter	{ i i	{ pt 8 pt 9	} M F O and T	Far	i
j 99	Harris, W C	i	pt 5			
142	Hill, George	D	pt 3	M F and O	Far	i
j 484	Heatley, George	D	pt 9	M F and O	Far	i
j 95	Hill, John	s Harris	2, 3	M F and O	Far	i
j 43	Harker, Wm	n King	20, 21	M F and O	Postmaster	

Jun.	No. on Roll.	NAME.	Concession.	L.O.T.	Other Description.	Occupation.	P.O.
	94	Hothan, Abraham...	Harris	16, 17	M F and O	Far	1
j	69	Heath, Thomas	D	pt 1, 86, 87	M F and O	Far	1
j	70	Heath, Wm.....	D	pt 1, 86, 87	M F and O	Far	1
j	100	Haycroft, Francis...	1	pt 5	M F and O	Far	1
j	24	Harris, James.....	s K & n P	6, 18	M F O and T	Lab	1
j	65	Hall, Austin	n e pt	5	M F and O	Far	1
j	92	Hay, George.....	n & s H st	526	M F and T	Far	1
j	93	Hotham, J.....	n & s H st	5 & 26	M F and T	Far	1
j	78	Hotham, Samuel....	n V	7, 8	M F and T	Mech	1
j	127	Hay, David.....	{	1 pt 8 1 pt 9 }	M F O and T	Far	1
j	154	Hill, John, jr.....	w M	1, 2	M F and T	Lab	1
j	74	Hawes, Sam.....	e Yk st	26	M F and O	Agt	1
j	477	Johnston, Wallace...	D	pt 10, 11	M F and O	Far	1
j	49	Johnstone, Henry ...	Park	6	M F and O	Mer	1
j	16	Jarvis, Francis.....	s Bridge	1, 7	M F and O	Hotel K	1
j	106	Jickles, Francis.....	D	pt 6	M F and O	Gard	1
	84	Karl, Leonard.....	n H R	12	M F and O	Far	1
j	55	Knowles, J. W.....	n King	1	M F and O	Mech	1
<i>AK</i>	56	Knowles, Benj.....	n King	1	M F and O	Mech	1
j	156	Link, Wm.....	n B st	2	M F and T	Lab	1

TOWNSHIP OF DELAWARE.

15

P.O.	Jur.	No. on Roll	NAME.	Concession.	LOT.	Other Description.	Occupation.	P.O.
I		38	Morden, J.....	s King	2	M F and T	Tailor	I
I	j	479	Merrick, A.....	D	8	M F and T	Far	I
I		5	Morris, C. G.....	w Main	10, 30	M F and O	M.D.	I
I		11	Mitchell, F. H.....	e Main	12	M F and O	M.D.	I
I	j	104	Merrill, J. B.....	I	pt 6, 5	M F and O	Far	I
I		31	Montgomery, Robt..	D	P K 18	M F and O	Gent	I
I		87	Maier, John, sr.....	n Harris	14	M F and O	Far	I
I	j	88	Maier, Chris.....	n Harris	14	M F and T	Far	I
ech I	j	87	Maier, John, jr.....	n Harris	14	M F and T	Far	I
r I	j	76	Mahler, Lewis.....	e pt Abt	3, 4 5	M F and O	Com Mer	I
D I	j	113	Mahler, Alfred.....	1, 2 D	pt 6, 10, 11	M F and O	Far	I
gt I	j	108	Mahler, Harry.....	1, 2 D	pt 6, 10, 11	M F and O	Far	I
r I	j	482	Mercer, Wm.....	D	pt 11	M F and O	Far	I
er I	i	109	Mahler, Joseph.....	2, 1&D	pt 10, 11, 6	M F and O	Far	I
l K I	j	115	Mahler, Edward....	2, 1&D	pt 10, 11, 6	M F and O	Far	I
rd I	j	68	Moore, J.....	D7K st&cJ st	22, 70	M F and T	Lab	I
	j	274	Mathews, Harvey...	D	pt 9	Tenant	Lab	I
	j	49	McPherson, James..	I	pt 7	M F and O	Far	I
	j	133	McEwan, John.....	D	pt 1	M F and O	Far	I
ch I	j	20	MacDonald, Wm...	n Pleasant st		M F and O	B. S.	I
ch I	j	25	McGregor, James..	D s K	7	M F and O	V. S.	I
	j	50	McCandless, C....	York st	13	M F	V. S.	I
	j	57	McFee, Roderick...	e pt P K	3	M F and T	Far	I

Jur.	No. on Roll.	NAME.	Concession.	LOT.	Other Description.	Occupation.	P.O.
	141	Nettleton, Richard..	I	pt 4	M F and T	Far	I
j	138	Noxel, M	D	pt 3	M F and T	Far	I
		Orr, Wm.....		part P K 6	M F and O	Far	I
j	484	Parkins, Abraham..	D	pt 9	M F and O	Far	I
j	486	Parkins, John	D	pt 10	M F and O	Far	I
j	8	Peacock, Simcon ...	w	Main 5	M F and O	Shoemkr	I
	67	Pincombe, John....	D	pt 9	M F and O	Gent	I
	81	Peacock, Geo.....	n	King 15	M F and O	Shoemkr	I
j	501	Prior, Henry.....	D	pt 11	M F and O	Far	I
j	67	Pincombe, Sam	D	pt 9	M F and O	Barber	I
j	487	Parkins, Ed	D	11	M F and O	Far	I
	30	Pincombe, Robert..	s	King 9	M F and T	Lab	I
j	488	Parkins, Alfred	D	12	M F and O	Far	I
j	45	Perkins, Levi.....	E	7 K 31	M F and T	Lab	I
j	489	Parkins, Wm	D	pt 12	M F and O	Far	I
j	131	Quire, James	D	1, 2, 3	M F and O	Far	I
j	131	Quirie, Charles	D	1, 2, 3	M F and O	Far	I
j	43	Robertson, Chas....	n	King 20, 21	O	Shoemkr	I
	87	Regan, Timothy....	s	Harris 9	M F and O	Far	I

TOWNSHIP OF DELAWARE.

No. on Roll.	NAME.	Concession.	LOT.	Other Description.	Occupation.	P.O.
j 39	Robertson, Ernest..	n King	20, 21	M F and T	Far	I
j 40	Robertson, Robt ...	n King	20, 21	M F and T	Far	I
j 128	Scott, Howard	1	pt 6 7	M F and O	Far	I
j 524	Scott, Thomas {	2 1	pt 13 pt 12 }	M F and O	Far	I
42	Scott Albert.....	7	pt 4	M F O and T	M C	I
j 478	Sutherland, Samuel.	D	pt 9	M F and O	Far	I
j 527	Scott, John..... {	2 1	pt 13 pt 12 }	M F and O	Far	I
j 73	Sleith, Alfred	e York	29	M F and O	Mech	I
j 525	Scott, Thos H {	1 2	pt 12 pt 13 }	M F and O	Far	I
j 526	Scott, Daniel..... {	1 2	pt 12 pt 13 }	M F and O	Far	I
j 22	Sinclair, Edward ...	K & J sts	26	M F and O	But	I
j 23	Sinclair, Albert.....	K & J sts	26	M F and O	But	I
j 21	Tiffany, John	s Kg st	4, 5	M F and T	T H	I
66	Thrower, Stephen ..	n King	10	M F and O	Gent	I
7	Thrower, Chas.....	w Main	3, 4	M F and O	Gard	I
	<i>Wm Bull Malcolm</i>	D. pt	6	<i>M 7 7 A</i>	<i>Far</i>	<i>I</i>
j 97	Veil, Lewis..... {	n Pt st	4, 8, 29 1 pt 5 }	M F and O	Far	I

AK

Jur.	No. on Roll.	NAME.	Concession.	LOT.	Other Description.	Occupation. P.O.
j	6	Williams, W J.....	M & J & Y st		M F and O	B S I
j	80	Weld, Edgar.....	s Harris	1, 4	M F and O	Gent I
j	532	Weylor, Christian...	I	pt 11	M F and O	Far I
j	43	Whittaker, Wm.....	n King	8, 9	M F and T	H M I
j	10	Wagner, Geo	w York	12	M F and T	Painter I

PART II.—Persons entitled to vote at Municipal elections only:

No. on Roll.	NAME.	Concession.	LOT.	Other Description.	Occupation. P.O.
476	Auld, Mrs. Mary....	D	pt 8, 9	O	I
43	Albee, Mrs.....	n King	17	O	I
492	Burt, Miss H.....	I	w ½ 11	O	I
495	Burt, Jennie.....	I	w ½ 12	O	I
496	Burt, Victoria.....	I	w ½ 12	O	I
476	Blackquere, Mrs.....	n King	12, 5	O	I
493	Burt, Mary.....	I	pt 11	O	I
83	Bodkin, Mrs. R.....	Parks	1, 2, 4, 5	O	I
497	Burt, Fanny.....	I	w ½ 12	O	I
494	Burt, Mrs Ann.....	I	w ½ 12	O	I
498	Burt, Elizabeth.....	I	w ½ 12	O	I
499	Burt, Emma.....	I	w ½ 12	O	I
144	Branton, Mrs W.....	I & D	pt 5, 8	O	I
146	Branton, Mary.....	I & D	pt 5, 8	O	I

TOWNSHIP OF DELAWARE

19

No. on Roll.	NAME.	Concession.	LOT.	Other Description.	Occupation.	P.O.
148	Branton, Julia.....	1 & D	pt 5, 8	O		I
147	Branton, Harriet....	1 & D	pt 5, 8	O		I
152	Branton, George....	1 & D	pt 5, 8	O	Far	I
151	Branton, Henry.....	1 & D	pt 5, 8	O	Mer	I
149	Branton, Alfred.....	1 & D	pt 5, 8	O	Far	I
150	Branton, Johnston...	1 & D	pt 5, 8	O	Far	I
54	Badge, Mr.....	n K	15	M F and O	Mer	I
592	Davidson, F.....	I	pt 10	O		I
24	Fitzallen, Mrs. J....	e Main	16	O		I
143	Fonger, Mrs M.....	I	pt 2	O		I
68	Glover, Mrs.....	w 7, K	22	O		I
6	Glennie, G D.....	w York	11	M F and O	Car	I
121	Holmes, Mrs T.....	D	pt 7	O		I
66	Heatley, Mrs H....	D	pt 8, 9	O		I
127	Hacker, William.....	I	pt 8	O		I
140	Heron, Mrs.....	n King	2, 3	O		I
117	Hammond, Charlotte	Parks	7, 8	O		I
484	Heatley, Frank.....	D	pt 11	O		I
118	Hammond, Fanny...	C K	7, 8	O		I

No. on Roll.	NAME.	Concession.	LOT.	Other Description.	Occupation.	P.O.
27	Hammond, R C.....	s K	1	O	Mer	I
141	Hylton, Mr.....	1	pt 4	O	Gent	I
36	James, Mrs S.....	W C Rd		O		I
71	Jackson, Mrs M A ..	w York	16	O		I
98	Jeffers, Mrs J C.....	1	pt 5	O		I
53	Jennings, John.....	n King	15, 29	M F and O	But	I
71	Jackson Mrs.....	w York	16	M F and O		I
12	Ladd, Mrs.....	e Main	13, 15	O		I
26	Lockwood, Henry...	s King	1	O	Far	I
28	Link, Mrs J C.....	n Pleasant	5, 6, 7	O		I
45	Lawson, Mrs D.....	e York,	31	O		I
77	Mullen, Mrs.....	s York	26	O		I
111	Mahler, Carrie.....	1, 2 D	pt 10, 11, 6	O		I
107	Mahler, Mrs G.....	1, 2 D	pt 10, 11, 6	O		I
33	Munn, Mrs F.....	s K	pt pk	O		I
34	Munn, Miss A.....	s K	pt pk	O		I
35	Munn, Miss Christina	s K	pt pk	O		I
112	Mahler, George.....	1, 2 D	10, 11, 6	O	Far	I
113	Mahler, John.....	1, 2 D	10, 11, 6	O	Far	I
76	Merrell, Mrs S.....	1	pt 8, 9	O		I

TOWNSHIP OF DELAWARE.

21

No. on Roll.	NAME.	Concession.	LOT.	Other Description.	Occupation. P.O.
64	McEwen, Miss Agnes	n e pt pk	5, 6	O	I
464	<i>Wheat</i>	<i>alter</i>	<i>17</i>	<i>O</i>	<i>Far</i>
38	Parfitt, A.....	s King	2	O	Gent
126	Scott, Hugh.....	I	pt 6, 7	O	Far 3
130	Simmons, Chas.....	D & ·	pt 2, 3	M F and O	Far I
13	Steer, John.....	D, s B	5, 6	M F and O	Far I
57	Saxton, Geo.....		pt pk 3	M F and O	Far I
33	Stewart, Wm.....	e Juliet	65, 67, 69	O	I
488	Shore, J.....	D, s B	pt 12	O	I
132	Tiffany, Mrs Sarah ..	D	pt 2	O	I
160	Vail, Mrs. A.....	e York	30, 33	O	I
533	Waggoner, Mrs S....	S B	3	O	I
326	Weylor, Martin.....	I	pt 11	O	I
30	Whitehead, Willett...	s King	9	M F and O	Gent I
137	Watkins, James.....	I, 2	pt 7	M F and O	Far I

PART III.—Persons entitled to vote at elections for the Legislative Assembly only:

No on Roll.	NAME.	Concession.	LOT.	Other Description.	Occupation. P.O.
122	Anderson, W S G..	BS		MF	I
136	Bowman, M.....	D	pt 1	MF	Far ' I
159	Bodkin, E	Main st	1	HH	I
48	Brown, Rev T S.....	C, E Parsonage		HH	Clerg I
114	Cook, Ed.....	1	pt 6	MF	Far I
160	Cudney, Wm.....	n King st		MF and HH	Lab I
	<i>Crombie David</i>	<i>D. pt. 1-</i>		<i>M 7-</i>	<i>Genl. - /</i>
	<i>Cudney Rodney</i>	<i>1- 10.</i>		<i>R 7-</i>	<i>Genl. - /</i>
139	Dunn, W.....	D	pt 1	MF	Far I
536	Depotta, George....	2	pt 15	MF	Far I
143	Evans, Herbert.....	1	pt 3	MF	Far I
160	Evison, Alfred.....	1		MF	Far I
82	George, Rev.....	M Parsonage		HH	I
135	Hay, John.....	D	pt 1	MF	Far I
74	Hawes, Wallace.....			MF	Clerk I
37	Janes, Wm.....	1 D	pt 2	MF	Far ' I

TOWNSHIP OF DELAWARE

23

No. on Roll	NAME.	Concession.	LOT.	Other Description.	Occupation.	P.O.
157	Link, David.	n K	pt 2	M F	Far	I
158	Link, Melvin.	n K	pt 2	M F	Lab	I
29	Link, Frank.	s K	1, 2	M F	Far	I
169	Leach, W W Rev. ...	Manse		H H		I
104	Mathers, Frank.	I	pt 5	M F	Far	I
58	McFee, R, Jr.	8	pt pk 3	M F	Far	I
59	McFee, John.	8	pt pk 3	M F	Far	I
119	McPherson, To ... <i>Moyer H. D. Rev.</i>	I	pt 7	M F <i>M. Parsonage M.F.</i>	Far <i>Clergyman</i>	I <i>OK</i>
478	Odell, John.	D	pt 9	M F	Far	I
129	Paine, Albert.	D	pt 1	M F	Far	I
97	West, Geo.	I	n H 18	M F	Far	I

Polling Sub-Division No. 3.

Comprising all the lands in the Township of Delaware between Wards Nos. 1 and 2 on the North, and line between 1 to 17 and 18 on the South. Polling in S. H. in S S No. 4.

PART I.—Persons entitled to vote at both Municipal elections and elections to the Legislative Assembly:

Jur.	No. on Roll.	NAME.	Concession.	LOT.	Other Description.	Occupation.	P. O.
	279	Allen, Henry	4	pt 16	M F and O	Far	2
j	280	Allen, Josephus....	3	pt 16	M F and O	Far	2
j	309	Adams, Thomas....	2	pt 12	M F and O	Far	7
j	522	Aitkens, George... {	3	pt 14	} M F and O	Far	7
		2	pt 12				
	311	Aitkens, John.....	2	pt 12	M F and O	Far	7
	310	Adams, F. E.....	2	pt 11	M F and O	Far	7
	311	Adams, James.....	2	pt 13	M F and O	Far	7
	312	Adams, Arthur.....	2	pt 12	M F and O	Far	7
	313	Adams, Edward.....	2	pt 12	M F and O	Far	7
j	319	Bell, F William.....	3	pt 11	M F and O	Far	7
j	326	Bell, William	3	pt 15	M F and O	Far	7
j	299	Bodkin, J L.....	4	pt 13	M F and O	Far	7
j	323	Bodkin, Alexander.	3	pt 14	M F and O	Far	7
j	318	Bignall, Thomas....	1	pt 14	M F and O	Far	1
j	318	Bignall, William....	2	pt 11	M F and O	Far	2
		<i>Bignall Thomas jr</i>	<i>2</i>	<i>pt-11</i>	<i>M F and O</i>	<i>Far</i>	<i>2</i>
j	307	Beach, George.....	4	pt 13, 12	M F and T	Far	7

OK
OK
OK
OK

OK

TOWNSHIP OF DELAWARE.

No. on Roll.	NAME.	Concession.	LOT.	Other Description.	Occupation.	P.O.
j 325	Bodkin, Fried.....	3	pt 14	M F and O	Far	7
j 325	Bodkin, Lecon.....	3	pt 12, 13, 14	M F and O	Far	7
j 324	Bodkin, John.....	3	pt 14, 12	M F and O	Far	7
j 271	Blashill, Henry.....	4	pt 10	M F and T	Far	6
j 406	Bourne, Thomas....	2	pt 6	M F and T	Far	1
j 528	Craig, David.....	1 2 3 3	pt 13 pt 13 pt 15 pt 14	M F and O	Far	1
j 300	Campbell, Archibald.	4	12	M F and O	Far	7
270	Carey, Edward.....	4	pt 11	M F and O	Far	7
j 162	Cook, James.....	4	pt 17	M F and O	Far	2
j 302	Campbell, Neil.....	4	12	M F and O	Far	7
j 401	Carley, George.....	3	pt 9	M F and O	Far	1
j 529	Craig, Adam.....	2	pt 13	M F and O	Far	1
i 520	Craig, Horace.....	2 3	pt 15 pt 14	M F and O	Far	1
j 161	Cook, John.....	4	pt 17	M F and O	Far	2
j 400	Carley, Lonzo.....	3	pt 9	M F and O	Far	1
405	Fortner, Andrew....	2	pt 8	M F and O	Far	1
j 515	Farrell, Robt.....	2	pt 13	M F and O	Far	1
j 165	Henderson, John....	4	pt 17	M F and O	Far	2
j 321	Howlett, Robt.....	3	pt 11	M F and O	Far	7

Wards
on the

ctions

Occupation. P.O.

Far 2

Far 2

Far 7

Far 7

7

Far 7

Far 7

Far 7

Far 7

Far 7

Far 7

Far 7

Far 7

Far 1

Far 2

Far 2

Far 7

Lot	No. on Roll.	NAME.	Concession.	LOT.	Other Description.	Occupation.	P.O.
j	166	Henderson, Jas. jr..	4	pt 17	M F and O	Far	2
	168	Henderson, Donald.	4	pt 17	M F and O	Far	2
j	167	Henderson, Malc'lm	4	pt 17	M F and O	Far	2
	163	Hopkins, G.....	4	pt 17	M F and O	Far	2
j	276	Howlett, Joseph....	3	pt 12, 13	M F and O	Far	7
j	302	Hall, Austin.....	2	pt 15	M F and O		1
	322	Howlett, John..... <i>Howlett, W. H.</i>	3	pt 11 <i>M-11</i>	M F and O <i>M. F. and O. S.</i>	Far	7 <i>7</i>
j	402	Hewson, Benson...	2	pt 9	M F and O	Far	1
	404	Hall, Francis..... <i>Hull</i>	3	pt 6	M F and O	Far	7
j	403	Hughson, Oscar...	3	pt 9, 10	M F and O	Far	1
j	164	Hopkins, G W.....	4	pt 17	M F and O	Far	2
j	483	Heron, Alexander..	D	pt 14	M F and O	Far	5
j	531	Howlett, Ephraim..	2	pt 12, 13	M F and O	Far	7
j	308	Hamilton, Geo.....	3	pt 2	M F and T	Far	7
j	507	Johnstone, John....	1	pt 17	M F and O	Far	5
j	505	Johnstone, Henry..	1	pt 16, 15	M F and O	Far	5
j	504	Johnstone, Thos...	1	pt 16, 17	M F and O	Far	1
j	296	Kelly, Robt.....	4	pt 14	M F and O	Far	7
j	289	Kelly, Andrew.....	4	pt 14	M F and O	Far	2
j	286	Kelley, George.....	4	pt 16	M F and O	Far	2
j	278	Kaiser, John.....	3	pt 14, 15	M F and O	Far	7
j	534	Kennedy, Ben.....	1	pt 16, 15	M F and T	Far	5

TOWNSHIP OF DELAWARE.

27

Occupation P.O.	Jur	No. on Roll.	NAME.	Concession.	LOT.	Other Description.	Occupation P.O.
Far 2	j	535	Kennedy, Fred A...	1	pt 16, 15	M F and T	Far 5.
Far 2	j	274	Kilbourne, John...	4	pt 11	M F and O	Far 5.
Far 2	j	275	Kilbourne, Morley T	4	pt 11	M F and O	Far
Far 2							
Far 7	j	408	Leaker, Wm. H....	2	pt 8	M F and T	Far 1
Far 7							
Far 7	j	292	Monteith, George...	4	pt 15, 10	M F and O	Far 7
Far 1	j	285	Monteith, A C.....	3	pt 16	M F and O	Far 7
Far 7							
Far 1	j	283	Monteith, Wm.....	3	pt 17	M F and O	Far 7
Far 2	j	284	Monteith, John.....	3	pt 17	M F and O	Far 7
Far 5	j	329	Milne, William.....	2	pt 9, 10	M F and O	Far 7
Far 7	j	330	Milne, James.....	2	pt 9, 10	M F and O	Far 7
Far 7							
	j	281	McFarlane, George.	3, 4	pt 15, 16	M F and O	Far 7
	j	509	McAuley, Henry...	2	pt 16	M F and O	Far 1
Far 5	j	511	McAuley, Daniel...	2	pt 15	M F and O	Far 1
Far 5	j	273	McDougall, T T....	4	pt 10, 11	M F and T	C M 2
Far 1							
	j	272	Norton, L D.....	4	pt 10	M F and T	Far 7
Far 7							
Far 2	j	204	Powell, Charles....	2	pt 17	M F and O	Far 1
Far 2	j	205	Powell, Richard....	2	pt 17	M F and O	Far 1
Far 7	j	327	Prior, Richard.....	3	pt 17	M F and O	Far 7
Far 5	j	304	Pearn, M D.....	4	pt 13	M F and O	Far 7

Lot	No. on Roll.	NAME.	Concession.	LOT.	Other Description.	Occupation.	P. O.
j	268	Ryckman, Frank...	4	pt 8, 9	M F and O	Far	
j	266	Ryckman, Alton...	3	pt 8, 9	M F and O	Far	1
<i>W</i>	267	Ryckman, David... <i>Ryckman Edgar</i>	4	pt 8, 9 <i>pt 8, 9.</i>	M F and O <i>M F and O</i>	Far <i>Far</i>	2 <i>2</i>
j	471	Ralph, Edward.....	2	pt 8	M F and O	Far	1
j	434	Robertson, Wm.....	3	pt 8	M F and O	Far	1
j	516	Scott, Wm.....	1	pt 13	M F and O	Far	1
j	517	Scott, James.....	1	pt 13	M F and O	Far	1
j	326	Scott, Joseph.....	3	pt 14, 15	M F O and T	Far	7
j	277	Scott, Wm.....	3	pt 13, 14	M F O and T	Far	7
j	512	Scott, Hugh.....	2	pt 14	M F and O	Far	1
j	520	Scott, Nelson.....	1	pt 14	M F and O	Far	1
j	519	Scott, Thomas.....	1	pt 14	M F and O	Far	1
j	513	Scott, Howard.....	2	pt 15	M F and T	Far	1
j	273	Stonehouse, Elvin..	4	pt 10, 11	M F and T	C M	7
j	533	Weylor, Martin....	2	pt 11, 12	M F and O	Far	1
j	502	Weld, Joseph.....	1	pt 15	M F and O	Far	1
j	316	Wonnacott, John...	3	pt 11	M F and O	Far	7
j	318	Wonnacott, Thos...	3	pt 10	M F and O	Far	7
j	269	Wonnacott, Chas...	4	pt 9, 10	M F and O	Far	7
j	293	Willsie, Edgar.....	4	pt 15	M F and O	Far	7
j	294	Willsie, Charles....	4	pt 15	M F and O	Far	7
j	294	Willsie, Frank.....	4	pt 15	M F and O	Far	7

PART II.—Persons entitled to vote at Municipal elections only:

No. on Roll.	NAME.	Concession.	LOT.	Other Description.	Occupation. P.O.
290	Adams, Melvin....	4	pt 16	M F and T	Far 2
291	Adams, Samuel....	4	pt 16	M F and O	Far 2
291	Adams, Charles....	4	pt 16	M F and T	Far 2
314	Adams, Priscilla...	2	pt 12	O	7
315	Adams, Ella.....	2	pt 12	O	7
312	<i>Adams Arthur</i>	2	<i>pt-12-</i>	<i>M F O.</i>	<i>Far.</i>
313	<i>Adams Edward</i>	2	<i>pt-12-</i>	<i>M F O.</i>	<i>Far</i>
409	Blynn, Wm.....	2	pt 8	M F and O	Far 2
307	Beach, Mrs H H...	2	pt 13	O	7
410	Blashill, Tyndall...	3	pt 8	O	1
411	Blashill, Joshua....	3	pt 8	O	1
300	Campbell, Mrs.....	4	12	O	7
303	Campbell, Miss M..	4	12	O	7
399	Carley, Mrs L.....	3	pt 9	O	5
454	Deadman W H....	4	pt 9	O	2
532	Element, Wm.....	3	pt 9	O	
441	Fyke, Augustus....	4	pt 8, 7	O	2
271	Field, Wm.....	4	pt 10	O	
442	Fyke, Lorenzo....	4	pt 8, 7	O	2

Handwritten signatures and initials, including a large signature that appears to be 'C. H.' and another 'C. H.' below it.

No. on Roll.	NAME.	Concession.	LOT.	Other Description.	Occupation.	P.O.
169	Henderson, Miss M	4	pt 17	O		6
404	Hull, Francis, sr....	3	pt 8	O		
445	Ireland, Ferguson..	4	pt 8	O		
514	Ireland, Mrs Mary..	2	pt 13	O		1
212	Jones, Henry.....	2	pt 16	O		5
213	Jones, John.....	2	pt 16	O		5
214	Jones, Wm.....	2	pt 16	O		5
535	Kennedy, Mrs S....	1	pt 15, 16	O		5
296	Kelly, Ruth.....	4	pt 14	O		5
297	Kelly, Margaret....	4	pt 14	O		5
298	Kelly, Eliza.....	4	pt 14	O		5
274	Parsons, Thos.....	3	pt 17	O		9
275	Parsons, Mrs El....	3	pt 17	O		9
305	Pow, Peter.....	4	pt 9	O	Far	2
308	Purdy, David.....	3	pt 12	O	Far	
434	Robertson, Richard.	3	pt 8	O	Far	2

TOWNSHIP OF DELAWARE.

No. on Roll.	NAME.	Concession.	LOT.	Other Description.	Occupation.	P.O.
527	Scott, John.....	2	pt 13	O	Far	1
525	Scott, T H.....	2	pt 13	O	Far	1
524	Scott, Thomas.....	2	pt 13	O	Far	1
445	Scott, Wm.....	4	pt 8	O	Far	2
518	Scott, Mrs Ann.....	1	pt 14	O		5
518	Scott, Mary Ann...	1	pt 14	O		5
273	Smith, H J.....	4	pt 10	M F and O	Far	2
526	Scott, Daniel.....	2	pt 13	O	Far	1
287	Smith, Mrs W J....	4	pt 16	O		2
306	Schram, W.....	4	pt 9	T	Far	2

448 Tye, Wm J..... 4 pt 8 O

283: Monteth Wm 3 - pt 17 - M.F.O. - Far *GL*

282	Wilson, Richard....	3	pt 13	O		2
508	Weld, Stephen.....	1	pt 15	O		5
532	Weylor, Christian...	3	pt 9	O		1
269	Wonnacott, Mrs E..	4	pt 10	O		7
294	Willis, Mrs E.....	4	pt 15	O		7

PART III.—Persons entitled to vote at elections for the Legislative Assembly only:

No. on Roll.	NAME.	Concession.	LOT.	Other Description.	Occupation.	P.O.
<i>OK</i> 544	<i>Anderson, G.</i> Brown, George.....	3 3	.. 11 pt 14	M F	Far	2
<i>OK</i> 407	Bourne, John..... <i>Ballantyne, J.J.</i>	2 4	pt 6 pt 10 11	M F M F	Far	1 Chambers 7
288	Geddes, John.....	4	pt 16	M F	Far	2
546	Knowles, Thomas..			M F	Far	1
328	Jordon, John.....	1	pt 11	M F	Far	7
543	Jordon, Wm.....	1	pt 10	M F	Far	7
409	Leaker, Wm, jr....	2	pt 8	M F	Far	2
503	Odell, Wm.....	1	pt 15	M F	Far	7
320	Sinclair, Benj.....	4	pt 11	M F	Far	7
	Wilson, Little.....	3	pt 8	M F	Far	7
504	Watson, Frank.....	1	pt 17	M F	Far	7
523	Vanstone, John....	2	pt 14	M F	Far	7

Polling Sub-Division No. 4.

Comprising all lands in the Township of Delaware lying south of Lot 17. Polling in S. H. in S. S. No. 6.

PART I.—Persons entitled to vote at both Municipal elections and elections to the Legislative Assembly:

Int.	No. on Roll.	NAME.	Concession.	LOT.	Other Description.	Occupation.	P.O.
j	230	Baker, Albert.....	3	pt 23	M F and O	Far	9
j	232	Baker, Joseph.....	3	pt 23	M F and O	Far	9
j	184	Baker, William	3 and 4	pt 22	M F, O and T	Far	9
j	199	Baker, Thomas.....	4	pt 21	M F and O	Far	9
j	199	Baker, Isaac.....	4	pt 21	M F and O	Far	9
j	260	Belton, John.....	D	pt 24	M F and O	Lab	8
j	186	Baker, Samuel.....	4	pt 22	M F and O	Far	9
j	177	Burnard, J H.....	4	19 and 20	M F and T	Far	6
j	178	Burnard, Wm.....	4	19 and 20	M F and F S	Far	6
j	179	Burnard, Charles...	4	19 and 20	M F and F S	Far	6
j	180	Burnard, Reginald.	4	19 and 20	M F and F S	Far	6
j	239	Campbell, James...	3	pt 21	M F and O	Far	5
j	227	Campbell, Donald..	2 and 5	23 and 24	M F and O	Far	8
j	233	Campbell, W J....	3	pt 22, 23	M F and O	Far	5
j	540	Campbell, Henry..	1	pt 18	M F and O	Far	5
j	237	Cowling, William...	2	pt 21	M F and T	Far	9
j	250	Chambers, Thomas.	1	pt 24	M F and T	Far	9
j	192	Cowling, John.....	4	pt 23	M F and O	Far	9

Jur.	No. on Roll.	NAME.	Concession.	LOT.	Other Description.	Occupation.	P.O.
j	193	Dores, James.....	4	pt 24	M F and O	Far	4
j	194	Dores, David.....	4	pt 23	M F and O	Far	9
j	195	Dores, Wm.....	4	pt 24	M F and O	Far	9
j	187	Elwood, John.....	4	pt 22	M F and O		4
j	188	Elwood, Edward T.	4	pt 22	M F and O		4
j	206	Ferguson, Francis..	2	pt 21	M F and O	Far	5
j	258	Gordon, Duncan...	D	pt 24	M F and O	Far	8
j	196	Hunt, Llewellyn....	4	pt 24	M F and O	Far	9
j	173	Henderson, J W....	4	pt 19	M F and O	Far	9
j	174	Henderson, Alex, jr.	4	pt 19	M F and O	Far	9
j	249	Hall, Tom.....	2	pt 18	M F and O	Far	5
j	207	Jones, Henry.....	1	pt 19	M F and O	Far	6
j	208	Jones, John.....	2	pt 24	M F and O	Far	6
j	209	Jones, Wm.....	2	pt 24	M F and O	Far	1
j	172	Kent, John.....	4	pt 20	M F and T	Bl. S	8
j	216	Kennedy, James...	1	22	M F and O	Far	5

Jur.	No. on Roll.	
j	264	Le
j	265	Le
j	257	Le
j	185	Ma
j	183	Ma
j	240	Ma
j	255	Mu
j	241	Mu
j	259	Ma
j	248	Mo
j	248	Mo
j	249	Mo
j	170	Mo
j	171	Mo
j	221	Mo
j	219	Mo
j	218	Mo
j	225	Mo
j	223	Mo
j	262	Mo

No. on Roll.	NAME.	Concession.	LOT.	Other Description.	Occupation.	P.O.
j 264	Leach, John.....	{ I D	{ 23 19	M F and O	Far	5
j 265	Leach, Wm.....	{ D I	{ 19 23	M F and O	Far	5
j 257	Leitch, Hugh.....	1	pt 24	M F and O	Lab	8
j 185	Mann, G A W.....	4	pt 22	M F and O	Far	4
j 183	May, Donald.....	4	pt 21 and 20	M F and T	Far	5
j 240	May, James.....	3	pt 20	M F and O	Far	7
j 255	Munson, J S.....	1	pt 24	M F and O	Lab	8
j 241	Musgrove, John....	3	pt 19	M F and O	Far	5
j 259	Maiers Geo.....	1	pt 24	M F and O	Far	8
j 248	Montieth, Henry...	3	pt 18	M F and T	Far	8
j 248	Montieth, Tyler....	3	pt 18	M F and T	Far	8
j 249	McCully Thompson.	3	pt 18	M F and O	Far	4
j 170	McFarlane, John...	4	pt 18	M F and O	Far	5
j 171	McFarlane, Alex....	2	pt 18	M F and O	Far	5
j 221	McPherson, Donald.	2	pt 22, 23, 24	M F and O	Far	5
j 219	McNichol, Alex....	2	pt 21	M F and O	Far	5
j 218	McNichol, James...	2	pt 21	M F and O	Far	5
j 225	McPherson, Hugh..	2	20	M F and O	Far	5
j 223	McPherson, Duncan	1	pt 21, 20	M F and O	Far	5
j 262	McCallum, James..	1	pt 23	M F and O	Far	8

*Col
Ed*

Jur.	No. on Roll.	NAME.	Concession.	LOT.	Other Description.	Occupation.	P.O.
j	229	Orr, John.....	3	pt 23	M F and O	Far	5
j	200	Parsons, Thomas...	4	pt 18	M F and O	Far	2
j	200	Parsons, Thos, jr...	4	pt 18	M F and O	Far	9
j	252	Pulford, Peter R...	1	pt 24	M F and O	Mech	8
j	189	Stanton, J T.....	4	pt 23	M F and O	Far	4
j	190	Stanton, Edgar.....	4	pt 23	M F and O	Far	4
j	235	Scott, James W....	3	pt 20	M F and O	Far	5
j	234	Scott, Wm S.....	3	pt 21	M F and O	Far	5
j	247	Scott, James.....	2	pt 19	M F and T	Far	5
j	211	Thompson, Arch...	1	pt 20, 21	M F and O	Far	5
j	197	Thom, James.....	4	pt 23	M F and O		5
j	238	Vickery, Wm.....	3	pt 24	M F and O	Far	8
j	508	Weld, Stephen....	1	pt 18	M F and O	Far	5
j	203	Wilson, John.....	2	pt 19	M F and T	Far	5
j	182	Weeks, George....	4	pt 19	M F and O	Far	8

PART II.—Persons entitled to vote at Municipal elections only

No. on Roll.	NAME.	Concession.	LOT.	Other Description.	Occu- pation.	P. O.
185	Baker, William.....	4	pt 20	O	Far	2
184	Baker, Mrs E.....	3 and 4	pt 22	O		9
231	Baker, Thos W.....	3	pt 23	O	Far	
247	Campbell, Miss S A	2	pt 19	O		5
251	Dark, Mrs.....	1	pt 24	O		3
175	Henderson, Miss K.	4	pt 19	O		9
203	Jones, Mrs Agnes..	2	pt 19	O		5
215	Kennedy, Mrs H...	2	pt 22	O		5
537	Kennedy, Mrs T S .	1	pt 18	O		5
538	Kennedy, Mrs E A.	1	pt 18	O		5
242	Musgrove, Jane....	3	pt 19	O		9
244	McGugan, John....	2	pt 23	M F and O	Far	5
245	McGugan, Alex....	2	pt 23	M F and O	Far	5
246	McGugan, John, jr.	2	pt 23	M F and O	Far	5

POLLING SUB-DIVISION, NO. 4.

No. on Roll.	NAME.	Concession.	LOT.	Other Description.	Occu- ration.	P. O.
247	McGugan, Neal...	2	pt 23	M F and O	Far	5
256	McDougald, Archie.	1	pt 24	M F and O	Far	5
183	McCulley, Mrs.....	4	pt 21	O		9
220	McNichol, Mary...	2	pt 21	O		5
204	Powell, Richard....	2	pt 19	M F and O	Far	1
205	Powell, Charles....	2	pt 19	M F and O	Far	1
201	Parsons, Mrs El....	3	pt 17, 18	O		5
236	Scott, Mary.....	3	pt 20	O		5
191	Stanton, Mrs J.....	4	pt 23	O		4
305	Scott, Hugh.....	2	pt 18	O		5
212	Thompson, Mary...	1	pt 21	O		5
213	Thompson, Mrs D..	1	pt 21	O		5
180	Weeks, Patience....	4	pt 20	O		9
181	Weeks, Mrs Mary..	4	pt 20	O		
	<i>Wilson John D.</i>	<i>1-</i>	<i>" 24</i>	<i>O.</i>		

PART III.—Persons entitled to vote at elections for the Legislative Assembly only:

No. on Roll.	NAME.	Concession.	LOT.	Other Description.	Occupation.	P.O.
261	Belton, Fred.....	D	pt 24	M F	Lab	8
222	Bruce, James.....	2	pt 23	M F	Far	
265	Dines, George.....	1	pt 24	M F and H H	Far	8
210	Eldridge, Walter....	2	pt 17	M F	Far	5
228	Evison, George.....	3	pt 24	M F	Far	5
216	Fostlett, J.....	1	pt 22	M F	Far	9
226	Heron, Wm.....	2	pt 20	M F	Far	5
243	Heron, Robert.....	3	pt 19	M F	Far	5
539	Neno, Bert.....	1	pt 18	M F	Far	5
253	Pulford, G A.....	1	pt 24	M F	Far	8
184	Robertson, D.....	4	pt 22	M F	Far	9
224	Stalker, Hugh.....	1	pt 20	M F	Far	9
197	Tucker, John.....	4	pt 24	M F	Far	9
216	Tweed, James.....	4	pt 21	M F	Far	9

Number of Jurors marked on the List, 370.

I, WILLIAM C. HARRIS, Clerk of the Municipality of Delaware, in the County of Middlesex, do hereby certify that Parts I. and III. of the within List constitute a correct list for the year 1897 of all persons appearing by the last Revised Assessment Roll of the said Municipality to be entitled to vote at Elections for Members of the Legislative Assembly, and that Parts I. and II. constitute a correct list for the said year of all persons appearing by the said Roll to be entitled to vote at Municipal Elections in said Municipality; and I hereby call upon all electors to examine the said List, and if any omissions or other errors are perceived therein, to take immediate proceedings to have the said errors corrected according to law.

WM. C. HARRIS,
Clerk of Delaware,
Delaware Post Office.

Dated this 28th day of July, 1897.

CAHON DEC 9 1897 1897 4 DE

CHYON DEC-Q18X7US4 OE

