

CANADIAN CONTRACT RECORD

*A Weekly Journal of Engineering, Public Works,
Tenders, Advance Information and Municipal Progress*

This Paper Reaches Every Week the Town and City Clerks, Town and City Engineers, County Clerks and County Engineers, Leading Civil Engineers and Contractors throughout Canada, and Purchasers of Municipal Debentures.

VOL. 17.

TORONTO, MONTREAL — DECEMBER 12, 1906 — WINNIPEG, VANCOUVER

No. 41

THE CANADIAN CONTRACT RECORD

PUBLISHED EVERY WEDNESDAY

As an intermediate Edition of the Canadian Architect and Builder.

THE C. H. MORTIMER PUBLISHING COMPANY

of Toronto, Limited,

Subscription Price, \$6 per annum, payable in advance.

CONFIRMATION LIFE BUILDING, TORONTO
Telephone Main 256.

Branch Offices:

Room B34, Board of Trade Building, Montreal,
Telephone Main 2999.

700-701 Union Bank Building, Winnipeg,
Telephone 174.

Davis Chambers, 615 Hastings St., Vancouver,
B. C. Telephone 248.

Subscribers who may change their address should give prompt notice of same. In doing so give both old and new address. Notify the publishers of any irregularity in delivery of papers.

FOR SALE

Canadian patent rights, covering patent collapsible steel center for concrete culvert and other viaduct construction. Information given on application.

BLAW COLLAPSIBLE STEEL CENTERING CO.,
717 Westinghouse Bldg., Pittsburg Pa.

WANTED

Capable man who understands sewer construction to represent us in Canada. Information given on application.

BLAW COLLAPSIBLE STEEL CENTERING CO.,
717 Westinghouse Building, Pittsburg.

TO OUR READERS.

We wish to make the CONTRACT RECORD of the greatest possible value to subscribers, and to that end we ask their co-operation. Each subscriber is requested to consider himself a correspondent of the paper and to send us intelligence regarding proposed works of construction and contracts awarded in his vicinity.

We cannot hope to learn, through our regular channels of information, of all work contemplated throughout this vast Dominion, but by the co-operation of our readers we may more nearly approach the maximum efficiency in the service given.

Correspondence sent to our head office at Toronto or to our branches at Montreal, Winnipeg or Vancouver, will receive due attention and be much appreciated.

WANTED

Bridge Erector to erect Three Small Highway Bridges.

ONTARIO BRIDGE COMPANY,
34 Victoria Street, Toronto.

CONTRACTS OPEN.

GALT, ONT.—The Stevens Co. will erect a new moulding shop.

APPIN, ONT.—A bridge will be constructed here to cost \$15,000.

LEMBERG, SASK.—J. William will erect a residence here next year.

NINGA, MAN.—A new school building is to be erected here, cost \$10,000.

PETERBORO, ONT.—W. R. Hetley will erect a brick building next spring.

PARRY SOUND, ONT.—Sewers are to be laid on several streets to cost \$5,631.

COBALT, ONT.—A three storey public school is to be erected here cost \$8,000.

SARNIA, ONT.—The water mains will be extended to Point Edward, at a cost of \$2,500.

MOOSE JAW, SASK.—It is reported that Bullock & Bullock will erect large storage warehouses.

RICHMOND, QUE.—P. O'Connor is having plans prepared for the erection of a large hotel.

LACHINE, QUE.—It is probable that the Grand Trunk Railway will build a new station here.

WINDSOR, ONT.—The Lufkin Rule & Measuring Co., Saginaw, Mich., will erect a factory here.

NEW LISKEARD, ONT.—It is reported that S. Salmon will erect a grist mill to cost \$15,000.

NEW WESTMINSTER, B. C.—George McFarlane, Vancouver, will erect a three storey block.

CALGARY, ALTA.—W. M. Alexander will apply to the City Council for a street railway franchise.

TRENTON, ONT.—A reinforced concrete building is to be erected by the Glen Miller Paper Mills.

NAPANEE, ONT.—Debentures will be issued for \$7,250 to cover cost of extending sewerage system.

HIGH RIVER, ALTA.—The ratepayers will vote on the question of erecting a town hall at cost of \$15,000.

LACOMBE, ALTA.—A. N. Inskip will erect a three storey hotel. The plans have been prepared by J. C. King.

MAPLE CREEK, SASK.—The Town Council have decided to expend \$2,000 for extension of waterworks system.

INNISFAIL, ALTA.—The ratepayers have approved of a by-law to raise

\$23,000 by debentures for the erection of a new school.

CARLYLE, SASK.—Postmaster Riddell has purchased a site on which he will erect a two storey brick veneer building.

WESTMOUNT, QUE.—The ratepayers recently defeated a by-law to make provision for an improved water supply.

SUSSEX, N. B.—The Sussex Institute are considering the erection of brick and stone opera house to cost \$12,000.

KEEWATIN, ONT.—A. R. Cardinal and W. Murphy will erect several summer residences in connection with their hotels.

BRACEBRIDGE, ONT.—The ratepayers will be asked to authorize the expenditure of \$23,000 for improving the water supply.

CHILLIWACK, B. C.—The ratepayers are considering a drainage scheme, which, if carried out, will cost about \$20,000.

ESTEVAN, SASK.—Willis Chipman, C.E., Toronto, has estimated the cost of waterworks and electric lighting system at \$67,000.

MILLSIDE, B. C.—The Fraser Saw Mills Company have had plans prepared for a three story hotel which they will erect next year.

PORTAGE LA PRAIRIE, MAN.—The ratepayers will be asked to authorize the issuance of \$16,000 debentures for school purposes.

WALNUT, ONT.—W. A. McDonald, Treasurer of the Township of Brooke, is taking tenders for the purchase of \$509 5 per cent. drainage debentures.

NIAGARA FALLS, ONT.—G. H. Brooks, Fallsview, Ont., is organizing a company to operate an iron foundry here. The capital of the company will be \$100,000.

THOROLD, ONT.—The Provincial Board of Health have considered the plans submitted for the waterworks system, and recommended the installation of a filtration system.

SHAWINIGAN FALLS, QUE.—Plans are being prepared by F. P. Sheldon, Providence, R. I., for a large cotton mill to be erected here for the North American Cotton Co.

BERLIN, ONT.—The ratepayers will vote on the question of issuing \$24,612 debentures for the erection of a market building and construction of a trunk sewer in the west ward.

ANACONDA, B. C.—B. A. Isaacs and R. W. Hinton are the promoters of a company who propose erecting several buildings in connection with the operating of an iron foundry in this town.

GUELPH, ONT.—The City Council have decided to grant a loan to Morlock Bros. The concern will erect buildings at a cost of \$18,000.—The Michigan Ammonia Works, Detroit, Mich., will establish a branch here.

ST. JOHN, N. B.—The Grand Falls Power Co., Ltd., who purpose developing power at Grand Falls, are applying to the City Council for a street railway franchise.—The congregation of Germain street Baptist church will erect a new Sunday school.

GODERICH, ONT.—The Rogers Manufacturing Co. have applied to the Town Council for a loan with which to extend their present plant.—The Goderich Carriage Co. are also seeking financial assistance for the purpose of erecting buildings and installing machinery to cost \$30,000.

STRATFORD, ONT.—The City Council have authorized the erection of a storage house to cost \$3,600.—Plans are being prepared for additions to the Grand Trunk Railway workshops to cost \$200,000.—Knox church will erect a Sunday school building at a cost of about \$13,000.

QUEBEC, QUE.—The Canadian Pacific Railway have definitely decided to demolish the Chateau Frontenac and erect a more modern structure at a cost of \$1,000,000.—The City Engineer is preparing plans and estimates for the paving of several streets and laying of a number of sidewalks.

LONDON, ONT.—At a meeting of the Council of the County of Middlesex the construction of nine bridges was recommended by the County Engineer.—G. T. Hiscox is considering the erection of an arcade.—Additions will be made to Askin street Methodist church to cost \$15,000.—The Provincial Long Distance Telephone Company, of Toronto, are applying to the City Council for a franchise.

EDMONTON, ALTA.—The Hamilton Separating Co., Hamilton, Ont., have purchased a site on which to erect a warehouse.—A. W. Cameron will erect a one-storey block, cost \$3,000.—The City Council are considering the extension of the waterworks system and electric light plant.—C. H. S. Wade and W. Spurrell are figuring on building a theatre with a seating capacity of 1,200.

HAMILTON, ONT.—The Board of Works have recommended the expenditure of \$200,000 for the improvement of roadways.—G. J. White will erect a brick house on Smith avenue to cost \$2,100.—F. E. Walker has purchased property, corner King and Catharine streets, on which to erect a two-storey building.—F. B. Wood Co., are about to erect a large addition to their factory.

ST. CATHARINES, ONT.—The City Council have passed a by-law authorizing the construction of several sewers.—A by-law will be submitted to the ratepayers for authority to extend the waterworks system.—Tenders will be received up to December 13 by W. Manson, Secretary Public School Board, for alterations and installation of sanitary appliances in Court street school. Plans with W. G. Watson.—Tenders will be received up to December 31 by the Superintending Engineer of the Welland Canal for the supply of timber, hardware, castings, etc. Specifications at the Engineers' office.

BRANTFORD, ONT.—The ratepayers will be asked to vote on a by-law authorizing the expenditure of \$40,000 for the erection of a pumping station.—The Nicholls-Pellatt syndicate, of Toronto, will extend their distributing system to this city, which will be used as a distributing point for the surrounding district.—The American Clay Machinery Co., Willoughby, Ohio, intend establishing a

clay and sand brick making plant here.—The Automatic Phone Co., will erect a large building.

VICTORIA, B. C.—Tenders will be received by W. W. Northcott, purchasing agent for the City, up to December 17, for brass goods and pipe fittings.—J. Scott, of Winnipeg, Man., will erect a large residence on Oak Bay Avenue.—An addition will be made to St. Joseph's hospital to cost \$75,000.—It is reported that a six storey hotel will be erected on the corner of Elliott and Government streets, on property owned by Mrs. James Anderson.

OTTAWA, ONT.—The date for the reception of tenders for the construction of a wharf at Coleraine, Que., has been extended to December 17.—The building committee of the Separate School Board have decided to install a system of heating and plumbing in St. Matthews and St. Bridget's schools, also new sanitary arrangements in the former.—The date for the reception of competitive designs for the proposed additions to the Parliament buildings has been extended to the 15th of April, 1907.

VANCOUVER, B. C.—Farrell & Tregent who are erecting an apartment house on Granville street, have decided to make the structure six stories instead of five.—Building permits have been issued as follows: K. O. Hope, residence, corner Comox and Gilford streets, cost \$15,000. Parr & Fee, architects; E. Robson, residence on Harro street, cost \$8,000; Columbia Building Company, Sixth avenue, three houses; H. Wright, Fourth avenue, \$1800; J. Dickie, Sixth avenue, \$2500; M. C. McLartyre, West avenue, \$3000; L. Wakely, Third avenue, \$2300; J. G. and G. H. Lighthouse, two dwellings on Pendrill street, cost \$7000; T. J. Whitesides, two houses on Fifth avenue, cost \$1500.

WINNIPEG, MAN.—H. B. Rugh, architect, will receive tenders up to December 15 for construction of a frame residence.—The Fairchild Co.'s building, tenders for which have just been taken by H. B. Rugh, architect, will be 100 x 132 ft. and consist of six stories and basement. It will be of mill construction, the materials used to be stone and Menominee brick.—An institution known as the Men's Own of the city of Winnipeg will erect a building to cost \$35,000.—Tenders will be received by the Chairman of the Committee on Works up to December 18, for the supply of from 2,000,000 to 5,000,000 feet of lumber, also up to December 31, for the supply of water pipe and specials.—A delegation recently waited on the Provincial Government requesting that a railway line be constructed from Somerset, Man., to the International boundary.

MONTREAL, QUE.—Tenders have just been taken by the Pure Ice Co., Ltd., 480 Temple building, for the supply and laying of 540 squares of 100 square feet each of roofing.—Plans have been prepared for extensions to be made to the Montreal Brewing Co.'s premises, to cost \$25,000.—Charles Brandeis, C. E., this city, has been appointed consulting engineer to the British North American Lumber Co., who purpose installing an electric light plant.—The Westmount Protestant School Commissioners have purchased property for a school site.—The following building permits have been issued: Israel Coutre, 3 dwellings, Aylwin, cost \$2,000; Chas. Sarrazin, 2 dwellings, Dufferin, cost \$1,800; P. L. W. Dupre, 2 dwellings, Delormier avenue, cost \$2,000; R. Legare, 6 dwellings, Ontario, cost \$8,000; F. Cote, 2 dwellings, cost \$2,000; A. Pion, 4 dwellings, Marquette, cost \$4,000; store, house

and 2 dwellings, corner Gilford and Marquette, cost \$4,000; Neveu Zotique, 2 dwellings, Gauthier and Dumont, cost \$2,000; Hon. V. Perodeau, addition to store, St. Catharine west, cost \$2,500.—Special meetings of the congregation of Knox church and members of Y. M. C. A. have been called at which to discuss the offers made by local capitalists for their properties.—It is reported that \$150,000 has been offered for the former and \$350,000 for the latter.

TORONTO, ONT.—Darling & Pearson have been appointed architects for the new General Hospital.—Tenders will be received up to December 19 by the Board of Control for electric wiring and tiling for the new Central firehall, on Adelaide street.—The Ontario Government have decided to proceed with the extension of the Temiskaming & Northern Ontario Railway.—A building will be erected by McMaster University to provide lecture room, gymnasium and dormitories.—The parish of Our Lady of Lourdes are considering the erection of a new church.—The congregation of St. John's Presbyterian church have decided to erect a church and Sunday school to cost \$50,000.—Tenders will be received by the Board of Control up to December 18 for construction of piling around city yard at Princess and Esplanade streets.—The following building permits have been issued: Edmonson, Bates & Co., 5 storey brick warehouse, corner Duncan & Adelaide streets, cost, \$25,000; O. to Higel Company, 2 story and attic brick and stone dwelling, 146 Dowling avenue, cost, \$8,500; H. Larkin, 3 attached 2 storey and attic roughcast dwellings, brick fronts, Hallam street, cost \$6,000; MacDonald Mfg. Co., 4 story brick addition to factory, Catharine street, cost \$18,000; W. O. McTaggart, 4 tow storey and mansard brick stores and dwellings, 1005 Bloor street west, cost \$12,000; Dr. T. D. Archibald, 2 storey and attic brick dwelling, corner College street and Palmerston avenue, cost, \$7,000; G. Claxton, pair 2 story roughcast dwellings, brick fronts, Winnifred avenue, cost, \$2,000; Gerrard street Methodist church, alterations to church and Sunday school, corner River and Gerrard streets, cost, \$10,000.

CONTRACTS AWARDED.

OSHAWA, ONT.—\$7,000 4½ per cent. debentures awarded to Wood, Gundy & Co., Toronto.

QUEBEC, QUE.—Erection building for the Quebec Railway Light & Power Co.; W. Sharpe, contractor.

REGINA, SASK.—\$180,000 4½ per cent. local improvement debentures awarded to Nay, Anderson & Co., Regina.

OTTAWA, ONT.—Additions to Parliament buildings: McGillivray & Blake, Ottawa., successful tenderers, at \$235,000.

WATERLOO, ONT.—\$18,000 4½ per cent. town debentures awarded to Dominion Securities Corporation, Toronto, Ont., at \$17,727.

GODERICH, ONT.—Installing Kelsey system of warming and ventilating in Baptist church: James Smart Mfg. Co., Brockville.

FLESHERTON, ONT.—Heating and ventilating the Temperance Hotel: James Smart Mfg. Co., Brockville, successful tenderers.

MILTON, ONT.—\$4,000 County of Halton debentures awarded to F. H. Deacon & Co., Toronto, highest tenderers.

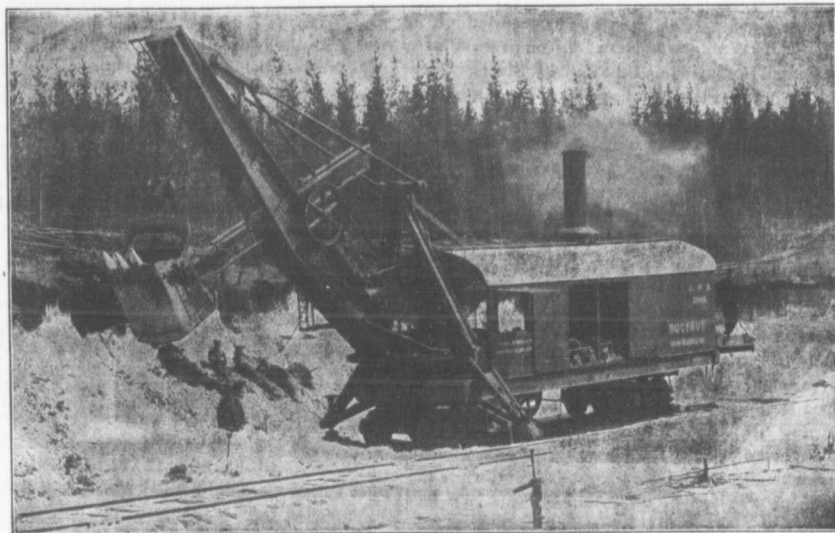
WINNIPEG, MAN.—The Canadian Northern Railway Co. have let contracts for equipment to cost \$4,825,000. The cars will be supplied by Rhodes, Curry Co., Amherst, N. S., Crossen Car Co., Cobourg, Ont., and Canada Car Co., Montreal, Que.; Locomotives by, Can-

Continued on Page 5)

BUCYRUS STEAM SHOVELS

Find Heavy Work Light

Known for Steady Continuous Running under good or bad conditions



61 ordered for the Panama Canal

— Write for Catalogue —

Locomotives
Dump Cars

Hand Cars
Rails Cars

Railroad Graders
Dump Wagons

W.H.C. MUSSEN & CO.

MONTREAL

l
t
n
n
s
r
it
r
r
ill
id
n
n-
he
h-
be
ro-
nd
of
f a
St.
ed
to
red
ber
ity
i-
een
rey
de-
gel
and
ue,
d 2
ngs,
100 ;
rick
cost
orey
ngs,
100 ;
atic
and
; G.
well-
ue,
odist
iday-
ects,

cent.
idy &

ilding
power

rcent-
ded to

Parlia-
Blake,
35,000.
½ per
Domin-
i, Ont.,

Kelsey
ing in
g, Co.,

ig and
James
ccessful

anty of
F. H.
st ten-

Canadian
ontracts
10. The
Curry
ar Co.,
ar Co.,
y, Can-

RURAL TRANSPORTATION.

The difficulties encountered in obtaining a cheap but efficient system of freight and postal delivery in rural sections has so far prevented any material success in this particular field. The interurban railway has played an important part in such matters, and is, of course, highly successful, though to justify the expenditure required for the construction of such an undertaking, the communities which it serves must be fairly well built up. Automatic devices of various kinds have been tried with limited success, for it appears to be essential to put the cars under the direct control of an operator who must necessarily travel with the car. When one considers the success which has been obtained in the manufacture of various articles by machines which are automatic in every sense of the word, it does not seem improbable that some day similar ideas may be incorporated into a system for rural freight delivery. A company is now being floated in Canada and the United States which has for its purpose the establishment of an automatic transportation system, the idea being to handle incoming and outgoing mail and freight of every description. A model of this system is now being exhibited in the city of Toronto, and the idea as presented seems to be quite feasible when carried out on a small scale. Success, of course, has been obtained in collecting mail bags by a fast moving train, and the system just mentioned is being worked out along somewhat similar lines. So far as the postal end of the scheme is concerned, the feasibility of the idea is apparent, because for this work the weights to be handled will always be small, and letter boxes can be picked up and dropped without material jar to the car itself or to its supporting structure. Any entirely automatic system must necessarily include tracks which are elevated a considerable distance above the ground, and while the cost of such structure is quite low where small weights are to be handled, still the expense will, we think, be a very serious item where heavy weights are concerned, and the possibility of picking up and dropping such weights from a moving car will bring forward many arguments against the system. The transportation scheme just mentioned includes a system of control whereby all cars are manipulated by an operator at the central point, and a modification of the block signal has been adopted so that the operator will know at any instant the exact position of all cars. Difficulty will be experienced, however, in keeping such cars properly spaced, as the speed of one, heavily loaded, will be considerably less than that of one running light. Slowing down and stopping at certain predetermined stations will also be another difficulty, for the cutting off of the current and the braking action must take place at some set point, and allowance cannot be made for the condition of the rails. In other words,

assuming for the sake of argument that the car is carrying a fixed load, if it be desired to stop or run slowly past a certain station, the brakes will be applied and the current cut off at a fixed number of yards before that station is reached. If the rails at this point are covered with ice, we cannot see what there is to prevent the car running past the station, and as there are no reversing appliances the car would undoubtedly pass on to the next station without delivering its freight. However, we must commend the spirit which has led the inventors to make a practical demonstration of the scheme, and we sincerely hope that the matter will prove satisfactory under actual working conditions.

SCHOOL OF SCIENCE DINNER.

The eighteenth annual dinner of the Engineering Society of the School of Practical Science, Toronto, was held at the Rossin House Friday evening, December 7th. About 400 persons were present. The tables were beautifully decorated and the banneret menu was a clever invention. The presiding officer was Mr. K. A. MacKenzie, President of the Engineering Society, while at the guest table sat President Hutton, of the University; Hon. W. J. Hanna, provincial secretary; H. Cockshutt, president Canadian Manufacturers' Association; J. W. Flavelle; Principal Galbraith; Dr. Ellis; Rev. Bruce MacDonald; Edmund Burke, president Ontario Association of Architects; C. H. Rust, city engineer; Prof. Steward; Prof. C. H. C. Wright; Prof. Mickle and Prof. T. R. Rosebrugh.

The toast list and respondents were as follows: "The King" by singing the National Anthem; "Canada and the Empire," by Mr. Cockshutt; "The Legislature," by Hon. Mr. Hanna; "The University," by President Hutton and Rev. Bruce MacDonald; "The Faculty of Applied Science," by Professor Galbraith; "Canadian Industries," by Mr. J. W. Flavelle, and "The Profession," by Messrs. C. H. Rust, M. Haney and E. Burke.

RULES FOR TELEPHONING.

In rules regarding the use of the telephone enforced by Marshall Field & Company, the following notice is conspicuously displayed in every department of their big Chicago store: "The manner in which a person uses a telephone indicates his character to a great extent and makes either a good or bad impression, and this impression is reflected directly upon the establishment from which such a message comes. It is a pleasure to do business with a house which performs every detail in a clean-cut, satisfactory manner; but it leaves a sting to be answered abruptly or discourteously over the telephone. It is folly to lose one's temper because one does not get immediate connection. This is rarely if ever the fault of the telephone operators, who are nearly always courteous and prompt. When one is called to the telephone he should respond quickly, and the person calling should not be left to hold the wire too long—something decidedly irritating and often unnecessary. Let us throughout the whole house strive to excel in satisfactory telephoning. Important Note—You will be heard distinctly if you place your lips within an inch of the mouthpiece and talk naturally as, if the person were standing beside you."

The Northern Electric and Manufacturing Co., Limited

MONTREAL AND WINNIPEG

TELEPHONES, SWITCHBOARDS,
FIRE ALARMS, LINE MATERIAL
AND SUPPLIES

GENERAL OFFICE AND FACTORY

Corner Notre Dame and Guy Street, MONTREAL

adian Locomotive Works, Kingston, Ont., Canada Foundry Co., Limited, Toronto, Ont., and Locomotive & Machine Company, Montreal, Que.

TORONTO, ONT.—Erection of a central fire station, corner Adelaide and Simcoe streets: Masonry, F. Holmes, \$32,964; carpenter work, P. Arnot, \$13,432; plumbing, J. E. Gray, \$2,036; heating, Toronto Furnace & Crematory Company, \$2,875; iron work, Dominion Bridge Co., \$4,200; lathing and plastering, Beaver & Company, \$1,995; painting and glazing, Taylor & Company, \$815; slating, galvanized iron and felt and gravel, roofing, Forbes & Co., \$1,173.

FIRES.

Repair shops of Canadian Northern Railway, Winnipeg, Man., loss \$7,000.—

Matthews, Towers & Co., Yorkshire Importing Co., Canadian Underwear Co., and others, Montreal, Que., estimated loss \$40,000.—Grant Bros. drug store, F. A. McCulloch & Co., dry goods store and adjoining buildings, New Glasgow, N. S., loss \$100,000.—J. B. Myers' hardware store, Stratford, Ont., loss \$2,000.—Canadian Folding Paper Box Co's building, Brantford, Ont., loss \$2,000.—Brick block owned by Kennedy Estate, Campbellford, Ont., loss \$2,000.—Shops of Marine Iron Works, Victoria, B. C., damaged to the extent of \$5,000.—Building of the Owen Sound Advertiser, loss \$1,000.—General store of J. R. Grant, Listowel, Ont., loss \$15,000.—Boiler shops of the Canadian Northern Railway, Winnipeg,

Man., loss \$60,000.—Working house of the Canadian Pacific Railway, Fort William, Ont., loss \$60,000.—St. Patrick's Home, Halifax, N. S., damaged to extent of \$2,000.—Strathcona Hotel, Neidig block and other buildings at Fort Steele, B. C., loss \$30,000.—Offices, draughting room and portion of machine shop of

CORRUGATED
WRITE FOR PRICES
METALLIC ROOFING CO.
LIMITED.
TORONTO, CANADA.
IRON



"BULL DOG" SHOVELS

forged from one piece of High Carbon Bar Steel without weld or rivet, solid neck and blade, tempered in oil, straight chucked handle can be replaced when broken.

CANADIAN SHOVEL & TOOL CO.
WRITE FOR CATALOGUE LIMITED **HAMILTON, CANADA**

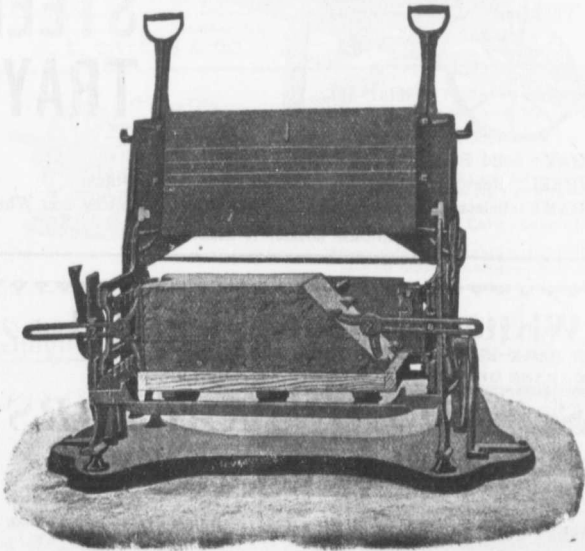


Note
Solid Shank

... Speaks For Itself ...

THE MILES CONCRETE BUILDING BLOCK MACHINE

Makes 40 Different Sizes of Stone in Any Design, as well as the Specials, viz:
 Water Table, Gable, Circle, Angle, Chimney, Cornice, Pier Blocks, etc.
 Catalogues and Information Cheerfully Furnished.



This Machine makes all blocks face down—"the only practical way"—allowing of a richer and finer facing, producing blocks that are perfect in appearance and impervious to moisture.

Let us tell you how the "Miles" will pay for itself over any other machine in three months' operation.

Manufactured and Sold by
VINING BROS.
M'fg. Co.
 Niagara Falls, - Can.

Robb Engineering Co., Amherst, N. S., loss \$25,000.—Car barns of the Galt, Preston & Hespeler Electric Railway Co., and the Preston & Berlin Electric Railway Co., Preston, Ont., loss \$80,000.—Kilborn & Davisons' cheese factory, Delta, Ont., loss \$2,000.—Store of Richard Hall & Sons, Peterboro, Ont., \$3,000.—McGarvey building, C. A. Workman's building and adjoining structures, Montreal, Que., loss \$200,000.

During the month of November 108 building permits, valued at \$431,650, were issued in Montreal, Que. This shows an increase of \$118,000 over the same month last year.

In the basement of the City Hall at Medicine Hat and under the supervision of the City Engineer,

several men are employed in the manufacture of cement pipe for the city. The capacity of the plant is about 500 feet per day and the engineer estimates a saving of 5 cents per foot as well as freight charges, on the price that would have to be paid were the pipes bought in the east.

A. LEOPRED
(Graduate of McGill).
Consulting Engineer
WATERWORKS A SPECIALTY.
39 St. John Street
Metropolitan Ins. Bldg. **QUEBEC**
Phone 54c.

JNO. S. FIELDING
C. E.
CONSULTING ENGINEER
Concrete Dams
Power BRIDGES
MACHINERY **Plants**
Hydraulics
25 Years' Experience
15 TORONTO STREET - - TORONTO



Matthews
Fire
Hydrant

Is the recognized Standard Hydrant, and is the easiest Hydrant to keep in order.

Our Hydrants are thoroughly tested before shipment, and are of substantial proportions and weight.

Have your Engineer specify "The Matthews'" and get our tender.

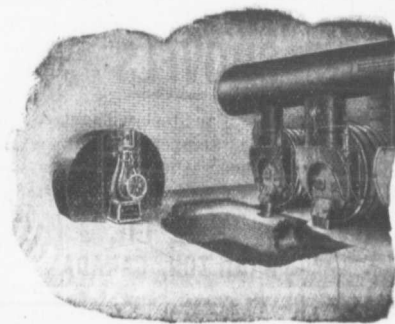
THE KERR ENGINE CO., LIMITED
Walkerville - Ont.

McGREGOR & McINTYRE, LIMITED
67 to 91 Pearl Street, Toronto, Ont.
STRUCTURAL IRON WORKS

Beams, Channels, Tees, Angles, Chequered Plates, etc., in stock.
Fire Escapes. Sidewalk Doors, Iron Stairs, etc., etc.
Sole Agents for Duplex Hangers and Goetz Post Caps, Wall Boxes, etc.

PHONES: 7248
7249

ESTIMATES FURNISHED



MECHANICAL DRAFT

Short Stacks
Positive Draft
Saves Fuel
Burns Cheap Coal
Constant Steam
Pressure
Independent of Weather

Catalogue ?

CANADIAN BUFFALO
FORGE COMPANY, LTD.
MONTREAL, QUE.

THE WILKINSON PLOUGH COMPANY, LIMITED
TORONTO, CANADA



SOLID
STEEL
TRAY

TRAY: Solid Pressed Steel, Edges Turned Over.
WHEEL: Heavy Wrought Iron, running in Cast Bearings.
FRAME: Selected Hardwood, Handles Capped and Projecting over Wheel.

OF PARTICULAR INTEREST TO MUNICIPALITIES

Canadian White Company, Limited
SOVEREIGN BANK BUILDING, MONTREAL, CANADA
WINNIPEG OFFICE: BANK OF BRITISH NORTH AMERICA BUILDING

ENGINEERS AND CONTRACTORS

FOR

Steam and Electric Railroads: Electric Light and Power Plants: Building Construction: Water and Gas Works: Docks, Harbor Works, etc., etc.

J. G. WHITE & COMPANY, INC.,
New York City

CORRESPONDENTS
J. G. WHITE & COMPANY, LIMITED,
London, England

WARING-WHITE BUILDING CO.
London, England

Peter Craib, a well-known builder of Woodstock, Ont., recently died at his home. Deceased was born in Mortlach, Scotland, in 1822. Coming to Canada in 1853, he settled in Hamilton, Ont., the following year he removed to Woodstock and became associated with D. R. Stewart in the building and contracting business. He was for several years a member of the Town Council and was also Reeve of the County.

JOHN GALT
C. E. and M. E.
CONSULTING ENGINEER
and **EXPERT**

SPECIALTIES:
WATERWORKS, SEWERAGE
AND **ELECTRIC LIGHT**

Chief Assistant Engineers:
O. W. SMITH, C. E. W. J. BOWERS, C. E.
23 Jordan Street **TORONTO**

The Electric Blue Print Co.
40 Hospital Street, **MONTREAL**

BLUE PRINTS
POSITIVE BLUE PRINTS
BLACK PRINTS
MULTI-COLOR PRINTS

Best Finished Work on the Market at the Lowest Prices.

WHY PURCHASE STRUCTURAL STEEL

We offer 300 tons second hand **TEE AND GIRDER RAILS**, for bridges, &c., cut in lengths to suit purchasers.

SESSENWEIN BROS., MONTREAL

Men for Contractors

EMPLOYMENT OFFICE
Phone 4855 **WINNIPEG, MAN.** Main St.

Men of all descriptions furnished on short notice for railroad and building contracts.

Special Attention Given to Furnishing Gangs
E. E. BRYANS & CO.

THE BITULITHIC PAVEMENT

The Most Progressive Cities are Paved with Bitulithic
Some Recent Contracts:—
Toronto 3,441 sq. yds. Chatham 15,633 sq. yds.
Halifax 30,000 sq. yds. Amherst 8,000 sq. yds.
Regina 21,215 sq. yds. St. Catharines 4,600 sq. yds.
St. Boniface 18,272 sq. yds. Total . . . 129,161 sq. yds.

— A Well Paved City Bears the Stamp of Progress —

WARREN BITUMINOUS PAVING COMPANY, LIMITED

Head Office: 164 Bay Street, **TORONTO**
Branches: Chatham, St. Catharines, Ottawa, Regina, Halifax, Amherst.

Portland Cement...

HIGH GRADE GERMAN BRANDS FOR GRANOLITHIC AND ARTIFICIAL STONE SIDEWALKS.

Sewer Pipes, Best English Cements. Best Belgian Cements
Culvert Pipes, &c. W. McNALLY & CO., Montreal

JOSSON CEMENT

Is the Highest Grade Artificial Portland Cement and the Best for High Class Work. Has been used largely for Government and Municipal Works.

TO BE HAD FROM ALL CANADIAN DEALERS OR FROM

C. I. DE SOLA, 180 St. James Street, MONTREAL

AMBURSEN DAMS

OF REINFORCED CONCRETE

Write us at once for information.

Ambursen Hydraulic Construction Co., of Canada, Limited
Coristine Building, **MONTREAL**

A. & E. LOIGNON, C. E.

17 Place D'Armes Hill, **MONTREAL**

REINFORCED CONCRETE CONSTRUCTIONS

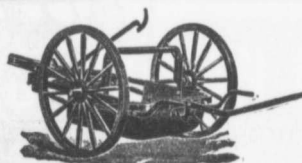
FOR
Fireproof Buildings, Hydraulic and Public Works
Steel Structures for Bridges and Buildings
Warehouses, Factories, Water Power Development

ROBINSON'S PATENT MOULD

for Cement Culvert Pipe

With or without Cone Top Filler. These Moulds are standard both in sizes and thickness of wall. Furnished with plain or telescopic joints. Write for Catalogue.

CLIMAX ROAD MACHINE CO.
HAMILTON, ONT.



The Toronto Pressed Steel Co., Limited
Toronto and Winnipeg

Manufacturers . . .

Drag Scrapers (Solid pressed bowl)
Wheel Scrapers (pressed or square bowls)
Dump Cars, from 1 to 3 yards
Wheelbarrows, Wood or Steel Trays
Waggons, Carts, Cement Mixers, Etc.

Prompt delivery from stock at Toronto and Winnipeg.
Send for complete catalogue. Write nearest office.



Spigot and Faucet Pipe

Flanged Pipe

Turned and Bored Pipe

MADE IN 12' 0" LENGTHS
3 TO 48 INCHES DIAM.



MADE IN SEVERAL WEIGHTS
PROVED FROM 100 TO 700 LBS.

— **AND SPECIAL CASTINGS** —

"THE WORLD'S STANDARD FOR ACCURACY, QUALITY AND FINISH."

WE ARE PREPARED TO QUOTE DELIVERED PRICES, AND MAKE PROMPT DELIVERIES IN ANY PART OF CANADA

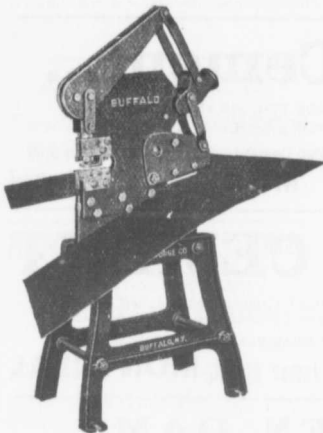
L. H. CAUDRY & CO.,

Canadian Agents for
Robt. Macdonald & Co., Glasgow.

QUEBEC AND MONTREAL

A NEW BUFFALO CONTINUOUS SHEAR, PUNCH AND BAR CUTTER.

During the past three years quite an extensive line of armour plate punches, shears, and bar cutters, comprising in all some 32 machines,



has been brought out by the Canadian Buffalo Forge Company, Montreal. The machine illustrated in the act of shearing a plate is a new addition to this line which has just passed through several months of practical use to test the various points of merit claimed for it. One

special feature is the provision for shearing any length without binding or crimping by placing an ingenious device between the top and bottom plate to prevent any tendency in this direction.

The machine is built in three sizes, known as Nos. 2½, 3½ and 4½, weighing respectively 150, 320 and 460 pounds. The smallest will punch ¼ inch holes in ¼ inch plates, split plates of No. 12 gauge, cut round iron up to ½ inch in diameter and ¼ x 1 inch flat stock. The intermediate size punches ⅜ x ⅜ inch, splits No. 10 gauge and cuts ⅜ inch round and 5/16 x 2 inch flat bars, and the largest punches ½ x ⅜ inch, splits No. 8 gauge and cuts ¾ inch round and ⅜ x 2½ inch flat bars.

The frames are made of armour plate and the other parts consist of drop forgings and crucible steel, with the exception of the stand, which is of cast iron. The bearing surfaces are machined and carefully fitted to eliminate lost motion. The jaws of the shears are of tempered crucible steel, and it is claimed will not give at the ends or spring and will not break under continual use at the rated capacities.

The use of much sheet metal in the company's works led to the development of these tools, where lightness, strength and indestructibility were important qualifications.

Originally they were offered to the blacksmith trade only, but they have proved to be very convenient for workers in structural iron, and are now presented to the metal working trades in general.

The complete line includes machines for almost every use that may arise in these trades.

It is reported that Lee & Cunniffe, contractors, Hamilton, Ont., have assigned to W. G. E. Boyd.

The McKinley Darragh Savage Mines have purchased from Allis-Chalmers-Bullock, Limited, of Montreal, a large amount of mining machinery, including a powerful cross-compound air and compound steam Ingersoll air compressor, Ingersoll rock drills, two 80 h. p. boilers, a feed water heater condenser, air pump, Lidgerwood standard mining hoisting engine air receiver, etc.

At the annual meeting of the Ontario Portland Cement Company, Limited, which was held at the company's office, Brantford, Ont., on December 1st, the directors report and the auditor's statement were received and found to be entirely satisfactory. The following officers were elected: E. L. Goold, president; W. S. Wisner, vice-president; W. G. Elliott, managing director, and S. H. J. Reid, secretary.






CONCRETE MIXERS

Of 14 distinct types and in many sizes.
Capacity 2 to 75 cubic yards per hour.
Most up-to-date in the market.
Of best material and workmanship.
Prices \$120.00 and upwards.
Hand, Gravity and Power.
With power (Steam, Gasoline or Electric) if required.

Made by the
UNITED CONCRETE MACHINERY CO.
Sold by

E. F. DARTNELL, - Montreal












Dominion Government Estimates for Year Ending March 31, 1908

The Dominion Government estimates for the year ending March 31, 1908, were recently submitted to Parliament. They provide for an expenditure of \$105,689,519.03 and include the following appropriations for railways, canals, public buildings, etc.:

RAILWAYS AND CANALS—CHARGEABLE TO CAPITAL.

Intercolonial Railway.—Improvements at Mulgrave, \$61,000; to increase accommodation at Pictou, \$34,000; extension to Sidney Mines, \$51,200; Glengarry water tank and reservoir, \$8,500; to increase accommodation at Sydney, \$5,500; improvements at North Sydney Junction, \$4,500; to increase accommodation at Stellarton, \$9,000; improvements at Sackville, \$30,000; improvements at Amherst, \$34,000; improvements at Newcastle, \$32,000; increased accommodation at Antigonish, \$10,250; Pirate Harbour water service, \$10,000; to dredge and blast rock at Deep Water Terminus, Halifax, \$5,000; to increase accommodation at Truro, \$110,000; to increase accommodation at Halifax, \$300,000; locomotive and car shops, and land purchase at Moncton, \$520,000; air brakes to freight cars, \$21,000; to exchange drawbars of freight cars, \$37,500; air compressors and reservoirs, \$5,400; air-brake equipment, \$19,500; new machinery for locomotive and car shops, \$100,000; to increase water service, \$32,000; increased accommodation and facilities along the line, \$62,000; new turntables, \$24,000; improvements at Ste. Rosalie, \$13,000; additional sidings along the line, \$19,200; Ballast plough and unloader, \$6,500; to improve telegraph line, \$24,500; improvements at Drummondville, \$25,000; to increase accommodation at Ste. Flavie, \$21,500; engine house, &c., Chaudiere Junction, \$66,800; engine house, machine shop, &c., at Riviere du Loup, \$65,000; towards double tracking parts of line, \$200,000; improvements at Campbellton, \$15,700; increased accommodation at St. John, \$14,000; to strengthen bridges, \$309,000.

Prince Edward Island Railway.—Increased accommodation at Charlottetown, \$318,000; rolling stock, \$20,000; extension of wharf at Souris, \$55,000; shelter and platform at Alesion, \$600; shelter and platform at Uigg, \$500; improvements at Summerside, \$250; improvements at Toronto road, \$500; Murray Harbor Branch Land purchase, \$6,560.

Lachine Canal.—Rebuilding slope wall, \$90,350. Soulanges Canal.—Manny's gate bars, \$8,250; bridge at Clement's Gully, \$12,000; im-

provements, \$16,080. Chambly Canal.—Improvements at St. Johns Harbor, \$25,000. Quebec Canals.—To purchase cement, \$55,000. Cornwall and other St. Lawrence Canals.—Enlargement, \$7,000; to build oil and lumber storehouse, \$3,000. River St. Lawrence.—Removal of shoals in River, upper entrance Galops Canal, \$28,000. Trent Canal.—Construction, \$280,000; surveys, \$4,000. Welland Canal.—Electric lighting and power plant, \$50,000; to remove centre piers and rebuild bridges at Queenston street and Homer road crossings, \$70,000; to make survey of canal, \$10,000; to build turning basin, culvert and dock at Welland, \$60,000; to widen canal near Welland, \$75,000; improvements at Port Colborne entrance, \$200,000; elevator at Port Colborne, \$637,000. Sault Ste. Marie Canal.—Construction, \$150,000. Lachine Canal.—Wall at Warehousing Company's basin, No. 2, \$27,150. Soulanges Canal.—General repairs, \$5,200; lock gates litter, \$12,000. St. Ours Lock.—New boom piers and booms, \$4,100; Manny's gate bars, \$1,500. Carillon and Grenville Canals.—To macadamize road, Carillon Canal, \$10,230; General repairs, \$1,600. St. Anne's Lock.—Manny's gate bar, \$1,500; General repairs, \$1,200. Quebec Canals.—Dump scows, \$4,500; re-marking boundaries, surveys, etc., \$2,500; to purchase cement, \$16,000. Chambly Canal.—To macadamize towpath, \$14,000; to strengthen banks at Ste. Therese, \$9,500; general repairs, \$5,900. Cornwall Canal.—A gate litter, \$10,000; to make land plan and mark boundaries, \$5,000; to rebuild river wharf at foot of canal, \$2,500; to complete north bank above lock 21, \$10,000; to provide storage room for spare gates, \$2,000. Galops Canal.—To build retaining walls, \$15,000. Murray Canal.—To rebuild piers of concrete, \$55,000. Welland Canal.—To build retaining wall in the rock cut \$70,000; to renew entrance piers at Port Maitland, \$15,000; dredging in Port Dalhousie entrance, \$5,000. Trent Canal.—Improvements, \$33,500; dam at Buckhorn, \$35,000; new boat for towing and inspection, \$15,000; dam at Lovesick, \$10,000.

PUBLIC WORKS—CHARGEABLE TO CAPITAL.

PUBLIC BUILDINGS.—Fittings, furniture, transit house etc., Ottawa Astronomical Observatory, \$8,000; Ottawa Royal Mint, \$55,000; additions and alterations, parliament buildings, Ottawa, \$175,000; improvements, Rideau Hall, Ottawa, \$100,000; Victoria Memorial Museum, Ottawa, \$200,000; Addition to eastern departmental block,

Ottawa, \$75,000; new departmental buildings, including site, Ottawa, \$400,000; addition to library, Supreme Court, Ottawa, \$24,000.

HARBORS AND RIVERS.—Improvements Quebec harbor, \$280,000; harbor and river improvements, Port Arthur and Fort William, \$500,000; improvements at St. Andrews Rapids, Red River, \$200,000.

PUBLIC WORKS—CHARGEABLE TO INCOME.

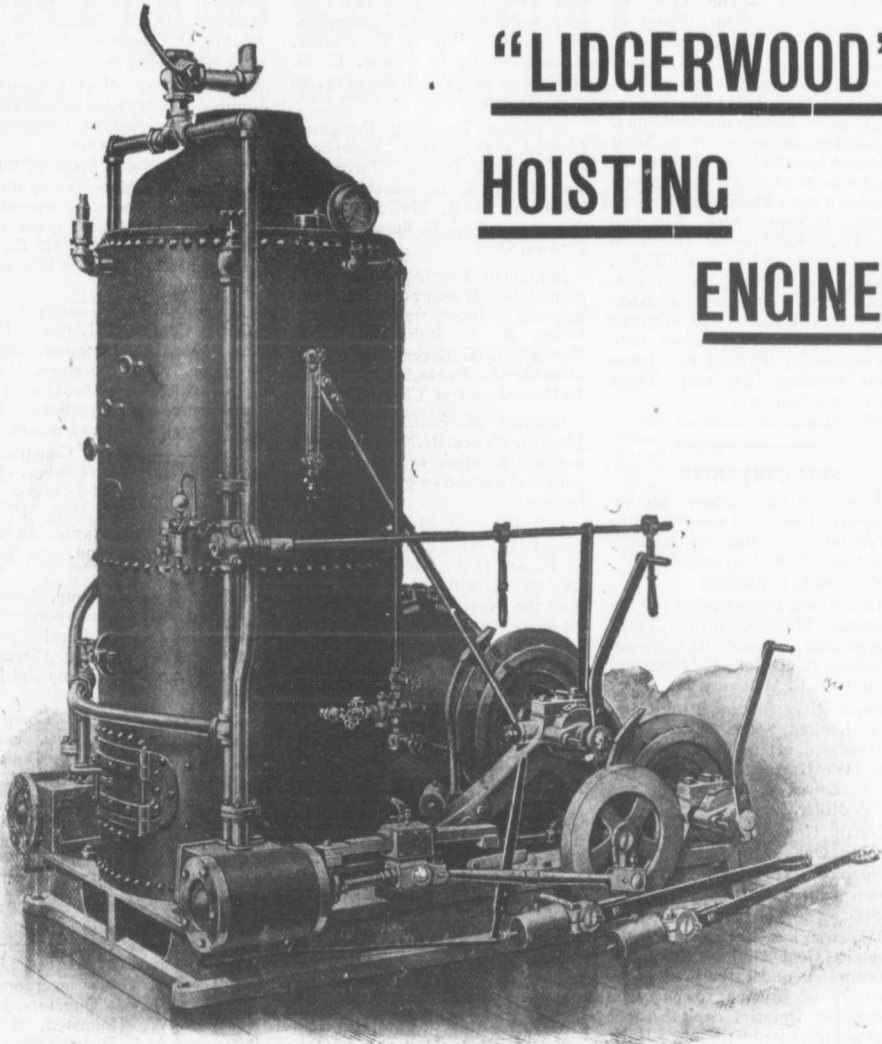
PUBLIC BUILDINGS.

Nova Scotia—Antigonish public building, \$5,000; Bridgewater public building, \$7,000; Canso public building, \$5,000; Glace Bay public building, \$20,000; improvements, repairs, etc., Halifax Dominion building, \$20,000; Halifax immigrant building, \$1,000; Halifax immigrant detention building, \$11,000; Halifax new public building (Custom House, etc.) \$22,000; winter hospital, electric plant, repairs, etc., Halifax quarantine station on Lawlor's Island, \$10,000; Inverness public building, \$18,000; Shelburne public building, \$10,000; Westville public building, \$10,000; improvements, Yarmouth public building, \$2,000.

Prince Edward Island.—Souris public building, \$3,000; assistance to municipal authorities towards opening Summer st. to Walter st. Summerside public building, \$1,500.

New Brunswick.—Improvements, repairs, &c., St. John Dominion buildings, \$2,000; addition to stores building and wagon and gun shed, St. John military buildings, \$13,000; laundry and sanitary works, Tracadie Lazaretto, \$5,000.

Quebec.—Chicoutimi post office, \$12,000; renewals, improvements, repairs, etc., Dominion public buildings, P. Q., \$16,000; improvements and repairs to buildings, Grosse Isle quarantine station, \$12,000; disinfecting apparatus, including building, Grosse Isle quarantine station, \$7,500; Iberville public building, \$10,000; Immigrant buildings generally, P. Q., \$5,000; Lachine public buildings, \$10,000; Levis public building, \$8,000; Magog public building, \$10,000; Montmagny public building, \$10,000; Montreal barracks for permanent corps, \$20,000; new stores building, Montreal military buildings, \$10,000; building for, and installation of pneumatic tube system for post office purposes, Montreal post office, \$50,000; site and building for Montreal new postal station B, \$30,000; improvements, alterations, repairs, etc., Montreal public buildings,



“LIDGERWOOD”
HOISTING
ENGINES

This Double Drum, Double Cylinder Hoisting Engine, a favorite for general contracting work, is one of the different styles we build on “Lidgerwood” designs.

CONTRACTORS' PLANT

“Ingersoll” Air Compressors and Rock Drills ; “Lidgerwood” Hoisting Engines and Ballast Unloaders ;
 “Gates” Rock Breakers ; Allis-Chalmers Steam Shovels ; “Bullock” Electric Motors and Generators.

ALLIS-CHALMERS-BULLOCK
 LIMITED

Head Office and Works : MONTREAL

**District
 Offices :**

{ MONTREAL : Sovereign Bank Bldg.
 NEW GLASGOW : N.S. Telephone Bldg.
 WINNIPEG : 251 Notre Dame Ave.

TORONTO : Traders Bank Bldg.
 NELSON : Josephine St.
 VANCOUVER : 416 Seymour St.

\$8,000; Nicolet public building, \$17,000; drill shed for school of gunnery, Quebec citadel, \$10,000; repairs, furniture, etc., Governor General's quarters, Quebec citadel, \$2,000; additions, renewals, repairs, etc., Quebec immigrant buildings, \$7,500; reconstruction of building destroyed by fire, Quebec immigrant hospital for treatment of immigrants suffering from trachoma and kindred diseases, in Savard park, \$40,000; main store building at Dominion arsenal, Quebec military buildings, \$6,500; public building, Queen east, \$30,000; Sherbrooke drill hall, \$20,000; St. Hyacinthe drill hall, \$10,000; stables for cavalry, St. Johns military buildings, \$7,000; St. Johns public building, \$25,000; Three Rivers drill hall, \$15,000.

(Continued in next issue.)

NEW COMPANIES.

Hunter Silver Cobalt Mining Company, Limited, Ottawa, Ont., incorporated, capital \$1,000,000. Directors, F. R. Latchford, W. L. Marler and J. J. Pheny.

Nova Scotia Silver Cobalt Mining Company, Limited, Toronto, Ont., incorporated, capital \$2,000,000. Directors, B. E. Bull, J. Montgomery and W. R. Williams.

South River Skating Rink Company, Limited, South River, Ont., incorporated, capital \$2,500. Directors, W. J. Ard, R. M. Carter, W. L. Lewis, J. F. Belfoy and C. W. Miller.

Cobalt Union Mines, Limited, Toronto, Ont., incorporated, capital \$1,000,000. Directors, J. A. Ferguson, J. S. Back and A. C. Armstrong.

A license has been granted the Olympia Gold Mining Company, incorporated under the laws of the Territory of Arizona, to carry on business in Ontario, capital to be used not to exceed \$40,000. E. N. Armer, Toronto, Ont., is attorney.

Premier Asbestos Company, Limited, Montreal, Que., incorporated, capital \$50,000. Incorporators, E. Languedoc, W. J. Henderson, A. C. Calder, C. T. Jette, and J. Jenkins, all of Montreal.

German Development Company, Limited, Ottawa, Ont., incorporated, capital \$1,000,000. Incorporators, G. W. Buxenstein, H. Damsiger, H. Craemer, all of Berlin, Germany, and O. E. Talbot, H. B. McGiverin, A. E. Barlow, and M. Cohn, all of Ottawa, Ont.

Dominion Chrome Company, Limited, Montreal, Que., incorporated, capital \$20,000. Incorporators, H. W. Beauclerk, A. C. Calder, J. Jenkins, A. Savard and E. Languedoc, all of Montreal.

Mussens, Limited, Montreal, Que., incorporated, capital \$500,000, to take over the business now carried on by W. H. C. Mussen &

Company, railway, mining and municipal contractors' supplies. Incorporators, W. H. C. Mussen, G. Boulter, G. G. Foster, C. G. McKinnon and W. R. Staveley, all of Montreal.

Dominion Dredging Company, Limited, Ottawa, Ont., incorporated, capital \$145,000. Incorporators, E. A. R. Larmonth, W. A. Cameron, E. R. McNeill, R. G. Stewart, and C. E. Stewart, all of Ottawa, Ont.

Miramichi Tanning & Fur Company, Limited, incorporated, capital \$45,000. Incorporators, R. H. Wing, R. S. Robinowich, W. Damery, J. B. Beveridge, J. McDonald, C. Ruddock and H. B. McDonald, all of Chatham, N. B.

Stohart Mercantile Company, Limited, Newcastle, N. B., are seeking incorporation to operate saw mills and carry on a general lumber business.

J. F. Tilley, A. Myles, J. A. Hayden, A. W. Hay, all of Woodstock, N. B., and G. F. Burpee, of Avondale, N. B., will seek incorporation from the New Brunswick Government, as the Woodstock Cold Storage Company, Limited.

Perth Electric Company, Limited, Perth, N. B., are seeking incorporation. Promoters, W. Amies, S. J. Brown, J. W. McPhail, C. L. Olmstead and G. E. Armstrong, all of Perth, N. B.

The Exploration Company of Canada, Limited, Toronto, Ont., incorporated, capital \$100,000. Directors, A. O. Beardmore, W. R. Johnston, H. C. Osborne, A. E. K. Evans and A. C. Macdonel.

North Cobalt Mining Company, Limited, Cobalt, Ont., incorporated, capital \$50,000. Directors, H. von Hagen, E. O. Seeley, and W. G. Kennedy.

Cobalt Native Silver Mining Company, Limited, Haileybury, Ont., incorporated, capital \$500,000. Directors, A. T. Budd, W. S. Mitchell and J. W. Kay.

Ruby Silver Mining & Development Company, Limited, Hamilton, Ont., incorporated, capital \$500,000. Directors, S. J. Lloyd, W. S. Hutchinson, J. M. Peregrine, G. R. Lloyd and H. S. Lees.

The Gilbert Plains Curling & Skating Rink Company, Limited, Gilbert Plains, Man., incorporated, capital \$5,000.

The Neva Development Company, Limited, Winnipeg, Man., incorporated, capital \$100,000. Incorporators, W. S. Linnell, T. H. Johnston, of Winnipeg, Man., and others.

The Schofield Paper Company, Limited, St. John, N. B., will seek incorporation at the next session of the New Brunswick Government.

D. E. Adams Coal Company, Limited, Winnipeg, Man., incor-

porated, capital \$100,000. Incorporators, D. E. Adams, H. E. Adams, D. Cameron, all of Winnipeg, and others.

The Noopka Marble Quarries, Limited, has been incorporated by the British Columbia Government with a capital of \$150,000.

Beaver Lumber Company, Limited, Winnipeg, Man., incorporated, capital \$3,000,000. Incorporators, J. Love, S. P. Clark, grain merchants, R. L. Gibson, H. Crowe, lumber merchants, all of Winnipeg, Man., and others.

General Metal Foundry & Machinery Company, Limited, Montreal, Que., incorporated, capital \$199,900. Incorporators, M. E. Lymburner, St. Agathe, Que., L. M. Lymburner, H. N. Lymburner, both of Montreal, Que., and others.

Canada Cement Construction Company, Limited, Quebec, Que., incorporated, capital \$100,000. Incorporators, J. A. Cote, D. W. Parante, E. Lamontagne, A. A. G. Gingras, J. Sampson, and J. A. Plante.

W. I. Kemp Company, Limited, Stratford, Ont.; incorporated, to manufacture agricultural implements, capital \$300,000. Directors, W. I. Kemp, N. J. Kemp and J. S. Lewis.

Duoglass Mining Company, Limited, Toronto, Ont., capital \$500,000. Directors, J. Douglas, C. S. Gzowski, J. Atwood, G. Laird, and J. A. Baggett.

Lorran Mining Company, Limited, Toronto, Ont., incorporated, capital \$400,000. Directors, G. H. Draper, C. McEachren, T. E. Smith, W. B. Laidlaw and A. H. Smith.

Cobalt & New Ontario Prospectors, Developers & Investors, Limited, Toronto, Ont., incorporated, capital \$500,000. Directors, J. L. Ross, A. W. Holmsted, F. H. Potts, and A. R. Bickerstaff.

McCurry Manufacturing Company, Limited, Toronto, Ont., incorporated, to manufacture grocery sundries, capital \$40,000. Directors, H. R. McCurry, J. Edwards, and J. McCurry.

Canadian Billing & Spencer, Limited, Brockville, Ont., incorporated, to manufacture tools and machinery, capital \$200,000. Directors, J. G. Gardner, J. H. Botsford, and W. S. Buell.

Delta Lime Company, Limited, Delta, Ont., incorporated, capital \$30,000. Directors, W. M. Cameron, F. H. Cameron, W. H. Wood, W. S. Buell and C. A. McNaughton.

Edward Cobalt Mines, Limited, Toronto, Ont., incorporated, capital \$100,000. Directors, W. R. P. Parker, G. McP. Clark, J. A. McEvoy, G. Russell, and Ethyl M. Lindsay.

Cobalt Smiley Mining Company,

JOHN S. FIELDING
CONSULTING ENGINEER
WATER POWER DAMS, etc.
15 TORONTO ST. TORONTO

Please mention this paper when corresponding with advertisers.

SAMSON CEMENT

MANUFACTURED BY
THE OWEN SOUND PORTLAND CEMENT COMPANY, LIMITED
Owen Sound, Ont.

Works at SHALLOW LAKE, ONT.

Write us for prices.

CLASSIFIED INDEX OF ADVERTISERS

ACCIDENT INSURANCE Page	DRILLING CONTRACTORS Page	PIPE (CAST IRON) Page
Ontario Accident Insurance Co. 19	Harvey, J. 20	Canada Foundry Co. 23
BLUE PRINTS	Peat & Sons, James. 14	Gartshore-Thomson Pipe and Foundry Co. 9
Electric Blue Print Co. 7	DEBENTURES	Gaudry & Co., L. H. 7
BLOWERS	Nay, Anderson & Co. 22	Montreal Pipe Foundry Co. 9
Buffalo Forge Co. 4	Stimson & Co., G. A. 21	PIPE (WOODEN)
BRIDGES (CONCRETE)	ENGINEERS AND CONTRACTORS	Canadian Pipe Co. 9
Steel Concrete Co. 15	British Columbia General Contract Co. 23	Pacific Coast Pipe Co. 20
BRIDGES (STEEL)	Canadian White Co. 6	PUMPS AND PUMPING MACHINERY
Canadian Bridge Co. 19	ENGINEERS (CIVIL)	Allis-Chalmers-Bullock 11
Canada Foundry Co. 23	Archibald, George H. 15	Canadian Buffalo Forge Co. 4
Dominion Bridge Co. 15	Chipman, Willis 17	Canadian Fairbanks Co. 20
Jenks & Dresser. 16	Connor, Clarke & Monds. 17	Canada Foundry Co. 23
Phoenix Bridge and Iron Works. 15	Davidson, Shirley 21	Drummond, McCall & Co. 14
CEMENT	Davis, Johnston 15	Mussen & Co., W. H. C. 3
Alsen Portland Cement Co. 9	Fenson, C. J. 16	McDougall Caledonian Iron Works Co., John 19
Bremner, Alex. 15	Fielding, John S. 6, 13	ROAD MACHINERY
Currie & Co., W. & F. P. 20	Galt, John 7	Cameron & Co., Hugh 16
DeSola, C. I. 7	Jackson, John H. 17	Climax Road Machine Co. 7
Gray & Bruce Portland Cement Co. 21	Lea & Coffin 17	Heaman, George. 23
Hyde & Co., F. 22	Leofred, A. 6	Morrison & Co., T. A. 13
Hanover Portland Cement Co. 19	McConnell, Brian D. 13	Sawyer & Massey Co. 16
Lakefield Portland Cement Co. 14	McDougall & McRae. 7	ROCK DRILLS
McNally & Co., W. 7	Parke, Roderick J. 17	Allis-Chalmers-Bullock 11
Morrison & Co., T. A. 20	Scott, Wm. Fry. 21	ROPE
National Portland Cement Co. 18	Simpson, T. T. 21	Allan, Whyte & Co. 21
Owen Sound Portland Cement Co. 13	ENGINEERS (MECHANICAL)	Dominion Wire Rope Co. 24
Ontario Portland Cement Co. 16	Farmer, John T. 21	Greening Wire Co., B. 21
Raven Lake Portland Cement Co. 20	Galt, John. 7	STEEL BARS (CORRUGATED)
Stinson-Reeb Builders' Supply Co. 17	ENGINES	Corrugated Steel Bar Co. of Canada. 16
Toronto Pottery Co. 22	Allis-Chalmers-Bullock. 11	STRUCTURAL IRON AND STEEL
Thorn Cement Co. 14	Cameron & Co., Hugh 16	Canada Foundry Co. 23
CONTRACTORS' SURETY BONDS	Sawyer & Massey Co. 16	Dominion Bridge Co. 15
United States Fidelity & Guaranty Co. 21	ELECTRICAL APPARATUS AND SUPPLIES	Jenks & Dresser. 16
CONCRETE MIXERS AND MACHINERY	Allis-Chalmers-Bullock. 11	Locomotive & Machine Co. 15
Dartnell, E. F. 8	Allis-Gen. Elec. Co. 23	McGregor & McIntyre. 16
Hopkins & Co., F. H. 24	Drummond, McCall & Co. 14	Phoenix Bridge & Iron Works. 15
Ideal Concrete Machinery Co. 18	Northern Electric & Mfg. Co. 4	STONE
Mussen & Co., W. H. C. 3	FIRE APPARATUS	Crushed Stone, Limited 16
Morrison & Co., T. A. 20	Cameron & Co., Hugh 16	Doolittle & Wilcox. 21
Toronto Pressed Steel Co. 7	Meadows, George B., Toronto Wire, Iron & Brass Works Co. 9	SHOVELS (STEAM)
Vining Bros. Mfg. Co. 5	McGregor & McIntyre. 8	Allis-Chalmers-Bullock. 11
CONTRACTORS' PLANT	Seagrave, W. E., Walkerville, Ont. 16	Beatty & Sons, M. 22
Allis-Chalmers-Bullock. 11	HOISTING MACHINERY	Canada Foundry Co. 23
Beatty & Sons, M. 22	Allis-Chalmers-Bullock 11	Hopkins & Co., F. H. 24
Canada Foundry Co. 23	Beatty & Sons, M. 22	Locomotive & Machine Co. 15
Hopkins & Co., F. H. 24	Canada Foundry Co. 23	Mussen & Co., W. H. C. 3
Locomotive & Machine Co. 15	Hopkins & Co., F. H. 24	SEWER PIPE
Mussen & Co., W. H. C. 3	Mussen & Co., W. H. C. 3	Bremner, Alex. 15
Peat & Sons, James. 14	Seagrave, W. E., Walkerville, Ont. 16	Canadian Sewer Pipe Co. 17
Toronto Pressed Steel Co. 7	HYDRANTS	Dominion Sewer Pipe Co. 14
CONCRETE CONSTRUCTION	Canada Foundry Co. 22	Toronto Pottery Co. 22
Ambursen Hydraulic Construction Co. 7	Canadian Fairbanks Co. 20	SHOVELS
Lougnon, A. & E. 7	Gartshore-Thomson Pipe & Foundry Co. 9	Canadian Shovel & Tool Co. 5
Steel Concrete Co. 15	Kerr Engine Co. 6	Hopkins & Co., F. H. 24
CONTRACTORS' EMPLOYMENT BUREAUS	Montreal Pipe Foundry Co. 9	Mussen & Co., W. H. C. 3
Bryans & Co., E. E. 7	McDougall Co., R. 21	TELEPHONE SUPPLIES
Zarossi, Banco. 15	LOCOMOTIVES AND RAILS	Northern Electric & Mfg. Co. 4
CORRUGATED IRON	Canada Foundry Co. 23	TANKS AND STAND PIPES
Meta lic Roofing Co. 5	Gartshore, John J. 19	Canada Foundry Co. 23
Pedlar People. 22	Hopkins & Co. 24	Ontario Wind Engine & Pump Co. 17
CRUSHERS (STONE AND ROCK)	Locomotive & Machine Co. 15	VALVES
Allis-Chalmers-Bullock. 11	Mussen & Co., W. H. C. 3	Canada Foundry Co. 23
Beatty & Sons, M. 22	Sessenwein Bros. 7	Canadian Fairbanks Co. 20
Canada Foundry Co. 23	PLASTER BOARDS	Gartshore-Thomson Pipe & Foundry Co. 9
Dartnell, E. F. 8	P. W. St. George. 20	Kerr Engine Co. 6
Hopkins & Co., F. H. 24	PILE DRIVING	Montreal Pipe Foundry Co. 9
Mussen & Co., W. H. C. 3	Hood & Sons, Wm. 19	McDougall Co., R. 21
Morrison & Co., T. A. 20	Russell, John E. 19	PAVING AND PAVING MATERIALS
DRILLING CONTRACTORS	PAVING AND PAVING MATERIALS	Brunet, Joseph. 17
Harvey, J. 20	Forest City Paving Co. 17	Ontario Asphalt Block Co. 17
Peat & Sons, James. 14	Ontario Asphalt Block Co. 17	Silica Barytic Stone Co. of Ontario. 15
DEBENTURES	Silica Barytic Stone Co. of Ontario. 15	Warren Bituminous Paving Co. 7
Nay, Anderson & Co. 22	PLASTER BOARDS	
Stimson & Co., G. A. 21	P. W. St. George. 20	
ENGINEERS AND CONTRACTORS	PILE DRIVING	
British Columbia General Contract Co. 23	Hood & Sons, Wm. 19	
Canadian White Co. 6	Russell, John E. 19	
ENGINEERS (CIVIL)	PAVING AND PAVING MATERIALS	
Archibald, George H. 15	Brunet, Joseph. 17	
Chipman, Willis 17	Forest City Paving Co. 17	
Connor, Clarke & Monds. 17	Ontario Asphalt Block Co. 17	
Davidson, Shirley 21	Silica Barytic Stone Co. of Ontario. 15	
Davis, Johnston 15	Warren Bituminous Paving Co. 7	
Fenson, C. J. 16		
Fielding, John S. 6, 13		
Galt, John 7		
Jackson, John H. 17		
Lea & Coffin 17		
Leofred, A. 6		
McConnell, Brian D. 13		
McDougall & McRae. 7		
Parke, Roderick J. 17		
Scott, Wm. Fry. 21		
Simpson, T. T. 21		

Limited, Toronto, Ont., incorporated, capital \$40,000. Directors, W. R. P. Parker, G. McP. Clark, J. A. McEvoy, G. Russell and Ethyl M. Lindsay.

Empress Silver Cobalt Mining Company, Limited, Toronto, Ont., incorporated, capital \$500,000. Directors, J. W. McDonald, G. J. Valin, T. Brown, Margaret Cairncroft, and Gertrude E. Cherpaw.

Temiskaming Mining Company, Limited, Toronto, Ont., incorporated, capital \$2,500,000. Directors, C. W. Kerr, C. S. MacInnes, C. C. Robison, Margaret Gleeson, and Annie E. Lloyd.

Forest Reserve Mining Company, Limited, Toronto, Ont., incorporated, capital \$100,000. Directors, F. Pottage, R. F. Wilks and P. G. Montague.

Cobalt Annex Silver Mines, Limited, Haileybury, Ont., incorporated, capital \$500,000. Directors, A. T. Budd, G. McM. Petrie, and F. Pottage.

Imperial Cobalt Silver Mining Company, Limited, Toronto, Ont., incorporated, capital \$1,000,000. Directors, J. W. McDonald, G. J. Valin, T. Brown, Gertrude E. Cherpaw, and Eva. L. Bradley.

Gilson Manufacturing Company, Limited, Guelph, Ont., incorporated, to manufacture gasoline engines, capital \$50,000. Directors, J. Gilson, H. W. Bowlens, and A. R. Boerner.

The Meisel Manufacturing Company, Limited, Port Arthur, Ont., incorporated, to manufacture all kinds of machinery, capital \$350,000. Directors, F. W. Woods, G. C. Meisel, R. McM. Meisel, J. Conne, G. Clavet, G. F. Horrigan, and A. J. McComber.

Cobalt Monarch Mining Company, Limited, Toronto, Ont., incorporated, capital \$1,000,000. Directors, J. F. McLaughlin, J. T. White, W. N. Ferguson, A. W. Hunter, and H. Ferguson.

Coin Silver Mining Company, Limited, Windsor, Ont., incorporated, capital \$300,000. Directors, F. E. Schoonmaker, E. H. Sellers, D. L. Murchey, G. W. Rice, and F. W. Droelle.

Massey Heat, Light & Power Company, Limited, Massey, Ont., incorporated, capital \$10,000. Directors, J. Brophy, J. K. Cameron, and S. Sadowski.

United Silver Company, Limited, Cobalt, Ont., incorporated, capital \$1,000,000. Directors, J. E. Day, J. M. Ferguson, E. V. O'Sullivan, A. W. Bixel, A. Day, J. J. O'Sullivan, and J. H. Hallett.

Purcival Plow & Stove Company, Limited, Merrickville, Ont., incorporated, capital \$200,000. Directors, J. J. Waddell, G. F. McKimm, E. W. Stickney, R. C. Purcival, and W. R. Morris.

Cobalt Electrical Development Company, Limited, Haileybury,

Phone No.: PARKDALE 180p. Post Office and Telegraph Address: SWANS

THE DOMINION SEWER PIPE CO., LIMITED

SWANSEA, TORONTO, ONT.



MANUFACTURERS OF

VITRIFIED SALT GLAZED -
SEWER PIPES

Price Lists and Discounts on Application — In Sizes from 4 inches to 24 inches

Turbine Pumps and Electric Motors

For use in connection therewith; all of highest efficiency and best workmanship.

MADE BY

MATHER & PLATT, Ltd., Manchester, England,
Drummond, McCall & Co.,

CANADIAN AGENTS

MONTREAL



DRILLING CONTRACTORS

WATER, SALT, OIL AND GAS WELLS

to any depth from 100 to 3000 feet. Contracts taken in any part of Canada. Excellent references. Estimates. Geological Reports. Expert Drillers and Complete Drilling Rigs Furnished.

JAMES PEAT & SONS

Established 1865. PETROLEA, ONT.

Portland Cement

Monarch Brand



Highest quality—guaranteed to fulfill the requirements of specifications for Portland Cement approved of by the Canadian and American Societies of Civil Engineers.

Prompt shipments from mill or stock at Fort William and Port Arthur.

THE LAKEFIELD PORTLAND CEMENT CO.,
LAKEFIELD, ONT. LIMITED



"Lehigh"
Portland Cement

Capacity 20,000 Barrels Per Day.

The "Lehigh Portland Cement Company, Limited," are also now building a plant at Belleville, Ont., of 750,000 barrels annual capacity. Until this plant is completed all orders can be shipped from the United States. For prices, etc., address—

THORN CEMENT CO. - Buffalo, N. Y.
SALES AGENTS FOR CANADA

GEO.
CONSUL

821

Municipal I
Reinforced C

BANC
Italian I
460 St

All kinds c

DAVIS

WATER WO

Wm. Mahlon
M. Can. Soc.
offi

ARTIFICI

SIDE
CORPORATI

The Silica
OI

WALTER M
General Mana

T

BRI

REI

TI
All parts
same. I
painting
bridges,

ST

GEO. H. ARCHIBALD
CONSULTING CIVIL ENGINEER

820 Union Bank Bldg.
WINNIPEG, CAN.

Municipal Improvements.
Reinforced Concrete and Steel Construction

BANCO ZAROSSI

Italian Licensed Labor Contractor
460 St. James St., MONTREAL

All kinds of Italian Laborers furnished
on short notice.

DAVIS & JOHNSTON

CIVIL ENGINEERS

**WATER WORKS, SEWERAGE
AND SEWAGE DISPOSAL**

Wm. Mahlon Davis, Herbert Johnston, C. E.
M. Can. Soc. C. E.
Offices: BERLIN and GALT

ARTIFICIAL STONE PAVEMENTS

SIDEWALKS A SPECIALTY
CORPORATIONS Will do well to consider our work
and prices before letting contract.

The Silica Barytic Stone Company
of Ontario, Limited.

WALTER MILLS General Manager. Head Office: INGBERSOLL, ONT.

THE PHOENIX BRIDGE & IRON WORKS, LIMITED
MONTREAL

GENERAL STEEL CONTRACTORS

Large Stock I BEAMS, CHANNELS, ANGLES, TEES, ZEES and
PLATES always on hand.

**Dominion
Bridge
Co., Ltd.**

P. O. Address, MONTREAL, P.Q.
Works at LACHINE LOCKS, P.Q.

STEEL BRIDGES

For Railways and Highways
Piers, Trestles, Water Towers,
Tanks, Buildings, Roofs, Girders,
Beams and Columns

Toronto Agent: GEO. E. EVANS,
38 Canada Life Bldg., TORONTO, ONT

PORTLAND CEMENT.



SEWER PIPES

FIRE BRICKS

FIRE CLAY

ALEX. BREMNER

50 Bleury Street, MONTREAL



The Locomotive and Machine Company
OF MONTREAL, LIMITED

NEW YORK OFFICE:
111 BROADWAY
N.Y.

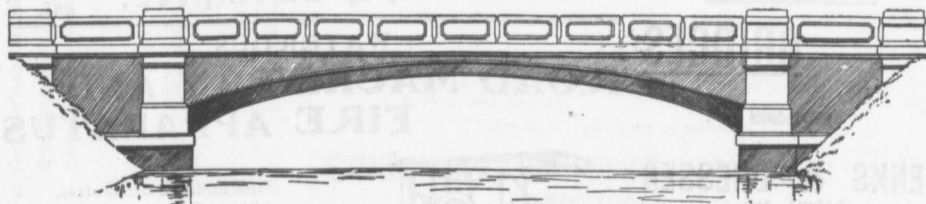
Structural Steel

WORKS:
LONG POINT
MONTREAL

BRIDGES NEW AND SECOND HAND CONTRACTORS' LOCOMOTIVES STEAM SHOVELS

Principal Office: Imperial Bank Building, MONTREAL

REINFORCED CONCRETE BRIDGES



This cut shows ONE of SEVEN arch bridge spans which we are now completing at Ottawa, Ont. All parts including arches and railings are in concrete thoroughly reinforced with steel bars imbedded in same. This construction is very rigid under heaviest loads, and will resist any flood or ice flow. No painting or maintenance; they are there to stay as long as the native rock. Cost about same as for steel bridges, and superior beyond comparison. Plans and tenders promptly submitted.

STEEL CONCRETE CO., Limited
Merchants' Bank Building, MONTREAL

Ont., incorporated, capital \$500,000. Directors, M. P. Wright, W. C. Young, R. T. Shillington, W. A. Sadler, and L. C. Todd.

Sombra Oil & Gas Company, Limited, Chatham, Ont., incorporated, capital \$40,000. Directors, N. H. Bøwe, J. W. Shay, P. W. Roth, E. I. Barnard, and F. B. Barnard.

Power City Stone Company, Limited, Niagara Falls, Ont., incorporated, capital \$40,000. Directors, J. H. Symmes, G. G. Durham, R. Boyd, F. C. McBurney, and A. E. Boyd.

Oxbow Telephone & Lighting Company, Limited, Oxbow, Sask.

The death is reported of S. Goodbody, builder, Montreal, Que.

Mr. R. H. Haas has resigned his position as general superintendent of the Dominion Engineering & Construction Company, of Montreal, and is at present on a business trip to New York, Pittsburg and the West. He expects to return to Montreal about the second week in January to resume a similar position as that held by him with the Dominion Engineering & Construction Company. Mr. H. F. Hass, superintendent of the Dominion Engineering & Construction Company, of Montreal, at the American Tobacco Company's new plant, has also severed his connection with the company.

C. J. FENSOM, B. A. Sc.
CONSULTING ENGINEER
Aberdeen Chambers - Toronto
Machinery designed, supervised, inspected and contracted for.
TESTS - REPORTS
Electric Light Plants, Power Plants, Pumping Plants.

STEEL

HIGHWAY

BRIDGES

JENKS & DRESSER
SARNIA, ONT.

BUILDERS OF

STEEL HIGHWAY BRIDGES
STRUCTURAL STEEL WORK
CONCRETE ABUTMENTS

Crushed Stone, Limited
STONE of any Size and in any Quantity on hand for Sidewalks, Roadwork or Concrete Work

Works: **KIRKFIELD, ONT.** Head Office: 47 Yonge St. Arcade, **TORONTO**
Phone Main 4316
G. W. Essery, Manager.

Blue Lake Cement

MADE BY
THE ONTARIO PORTLAND CEMENT Co. LIMITED
HEAD OFFICE: BRANTFORD, ONT. LONG DISTANCE 'PHONE 192

THE JOHNSON CORRUGATED STEEL BAR



FOR
REINFORCED CONCRETE
Manufactured by
THE CORRUGATED STEEL BAR CO. OF CANADA, LIMITED
Operating under Johnson Patent No. 91639 and by license of Sir Wm. Mather.
Office: Coristine Building, MONTREAL



New, Re-built and Second-hand
TRACTION and PORTABLE ENGINES
(Simple and Compound)
For drawing and driving Rook Crushers, Road Graders, Cement Mixers, Grinders, Threshers, Plows, Saw Mills and miscellaneous uses.
All Powers Quality the Best
Correspondence Solicited
Sawyer & Massey Co., Ltd.
Road Machinery Department
Hamilton Canada

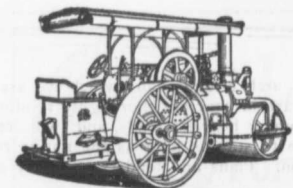
LIGHTNESS, STRENGTH AND ECONOMY

Seagrave Patent Trussed Ladders, Trussed Aerial, City Service and Village Hook and Ladder Trucks, Combination Hook and Ladder Trucks and Chemical Engines, Trussed Trucks and Hand Pumps, Combination Hose Wagons and Chemical Engines, Hose Wagons, Combination Hook and Ladder Trucks and Hose Wagons, Chemical Engines, Fire Extinguishers, Hose Reels, Patrol Wagons, Ambulances, Specialty Wagons, Patent Sleigh Runners, and other Modern Fire Fighting Tools.

Prompt attention given all inquiries. All goods built to order.

Long Distance Phone 685 and 684 **W. E. SEAGRAVE,** WALKERVILLE ONT.

"WATEROUS"
ROAD MACHINERY AND FIRE APPARATUS



FIRE ENGINES in five sizes, with a full line of fire-fighting goods

We Rebuild other makes of Fire Engines with our patent Boiler

BRANTFORD PITTS DOUBLE ENGINE STEAM ROAD ROLLER
IN THREE SIZES—10, 12 and 16 ton.
CORRESPONDENCE SOLICITED.

HUGH CAMERON & CO., Selling Agents 73 Queen St. West, Manning Chambers, TORONTO

Decem
WII
M. C
WATER
Report
10
LE
E
Water
Reinfo
Cork
ROI
A.M.
CON
Hie
Ste
Pr
Ho
88-88
Long I
Cabl
A. W. C
CON
Hydra
Eis
Pu
pr
MI
36 TOI
E
Grand
to a
7
Qu
JOS
WA
For Corporations, Municipalities, Villages,
W O
wi
ONT

MUNICIPAL ENGINEERS, CONTRACTORS AND MATERIALS

WILLIS CHIPMAN

Hon. Grad. McGill University.
M. Can. Soc. C.E. M. Am. Soc. C.E.
Mem. Am. W. W. Ass'n.
WATERWORKS, SEWERAGE WORKS, GAS
WORKS, ELECTRIC LIGHT AND
POWER PLANTS
Reports, Surveys, Construction, Valuations
103 BAY STREET - TORONTO

LEA & COFFIN
and H. S. FERGUSON
ENGINEERS

Waterworks, Sewerage, Water Power
Pulp and Paper Mills
Reinforced Concrete Structures of Every
Description.
Cristine Building - MONTREAL

RODERICK J. PARKE

A.M. Can. Soc. C.E. A.M. Amer. Inst. E.E.
CONSULTING ELECTRICAL ENGINEER.
Electrical Light and Power.
Steam Plants, Gas Power Plants, Water
Power Plants.
Estimates. Tests. Reports. Valuations.

88-89 James Building - TORONTO, CAN.
Long Distance Telephones—Office and Residence
Cable Address "Rodparke" (W. U. Code.)

CONNOR, CLARKE & MONDS

A. W. Connor, B.A., C.E. E. R. Clarke, B.A., Sc.
W. Mondy, B.A., Sc.
CONSULTING ENGINEERS
Hydraulic, Municipal and Railway Work; Long
Distance Power Transmission; Machinery;
Pumps; Complete Industrial Plants; Fire-
proof Steel or Reinforced Concrete Office and
Mill Buildings; Bridges, Towers, etc.
CEMENT TESTING LABORATORY
36 TORONTO ST. TORONTO, ONT

Paving Granite

Granite Sets for Street Paving.—CURBING cut
to any shape ordered.—Fine Rich Colors for
Building and Monumental Purposes.
Quarries, St. Philippe d'Argenteuil, P.Q.

Address all communications to
JOS. BRUNET - COTE DES NEIGES, MONTREAL

WATER SUPPLY APPLIANCES

For Corporations, Municipalities, Villages,
Residences, Etc.
Sprinkler Systems a Specialty.



**Wood and Steel Tanks,
Steel Substructures**

Windmills, Pumps, Gasoline Engines,
Hydraulic Engines, Etc.

ONTARIO WIND ENGINE AND PUMP CO., LTD.
WINNIPEG TORONTO MONTREAL

John H. Jackson

CIVIL ENGINEER
WATER POWER, ELECTRIC RAIL-
WAYS, STRUCTURAL STEEL.
Niagara Falls, Canada
Associated with Charles H. Mitchell,
C. E., Hydraulic Engineer.

McDOUGALL & McRAE

ENGINEERS
Electric Light and Power Plants.
Electric Railroads.
General Consulting Work.
Citizen Building - OTTAWA

300 MEN

Employed in cement walks, kerb and gutter, Pav-
ing and Building Construction. We can do work
QUICKER, CHEAPER, BETTER, than small con-
tractors.

Forest City Paving Co.,

B. V. HOLE, Manager. LONDON, ONT

THE ONTARIO ASPHALT BLOCK CO., L'T'D.

MANUFACTURERS OF
ASPHALT BLOCK PAVING

Information and samples furnished municipalities on application.
Main Office: WINDSOR, ONT. Works: WALKERVILLE, ONT.

THE CANADIAN SEWER PIPE CO.

MANUFACTURERS OF



FOR
Sewers, Culverts and Water Pipes
Inverts for Brick Sewers

WRITE FOR DISCOUNTS
ST. JOHNS, P.Q. HAMILTON, ONT. TORONTO, ONT

**"GIANT" AND "NORTHAMPTON"
PORTLAND CEMENT**

For Immediate Delivery

The above Cement we fully guarantee to fulfil the
requirements of Canadian and American Societies of
Civil Engineers.

Large stock always carried at Fort William, Port
Arthur and Duluth.

Telegraph, Telephone or write for prices.

STINSON-REEB BUILDERS' SUPPLY CO. Limited
MONTREAL, P. Q.

REGINALD LAWSON

WESTERN REPRESENTATIVE, UNION BANK BUILDING

Phone 3397 WINNIPEG, MAN.

For the Province of Saskatchewan:
REGINA STORAGE AND FORWARDING CO. — REGINA

The Town of Carman, Man., has purchased the electric lighting plant. The consideration was \$19,877. They are also erecting a pumping station which will be in operation in the course of a few weeks.

According to a statement prepared by the City Engineer's department, 10,221 miles of asphalt pavement have been laid in Winnipeg this year as compared with 505 miles in 1905 and there are now

13,070 miles on the order sheet construction, which has not as yet been begun. Nearly eleven miles of granolithic walks has been put down this season as against 13.94 miles last year.

One Grade "The Cement of Quality" The Highest



Tests of **NATIONAL Portland Cement**



BY
The City Engineer of Toronto for 1903-4

Note the High Grade of National. Compare it with others.

Year.	No Samples Tested.	Soundness Fajji Test.	Specific Gravity	Residue in No. 100 Sieve	Setting Time in Minutes		Tensile Strength in pounds per square inch.									
					Initial	Final	Neat.					3 (Sand) to 1 (Cement)				
							1 dy.	7 ds.	28 ds.	3 mos.	1 yr.	1 dy.	7 ds.	28 ds.	3 mos.	1 yr.
1903	20	O.K.	3.135	2.1	162	345	307	701	783	827	*	74	214	299	367	*
1904	44	O.K.	3.150	2.0	132	342	300	744	848	914	938	86	262	354	401	427

* Tests for 1 year were not completed when records closed. 1905 report not yet issued.

THE BEST IS THE CHEAPEST

The National Portland Cement Company

Limited

Head Office and Mills: DURHAM, ONTARIO

Defy Competition

The Ideal Concrete Machine for the manufacture of Concrete Building Blocks makes it possible to profitably undersell all other building materials in all localities.

Ideal Blocks can be sold far below the cost of brick, lumber or natural stone. Excel them all in durability and fire and weather proof qualities. Adaptable to any possible architectural design.

IDEAL CONCRETE MACHINERY

Wonderfully simple in construction. No chains, springs or gears. Embody the only principle (face down) permitting the practical use of rich facing material with less expensive material in back of blocks. Adaptable to any size block within capacity.



The same machine makes blocks in countless ornamental designs and natural stone effects.

Write and learn how easily, rapidly and profitably **one man** can turn out Concrete Building Blocks with an Ideal Machine.

IDEAL CONCRETE MACHINERY CO.,

Joseph Street,

LONDON

CANADA

The Canadian Bridge Co., Limited

WALKERVILLE, ONT.

MANUFACTURERS OF RAILWAY AND HIGHWAY BRIDGES

Locomotive Turn Tables,
Roofs, Steel Buildings and
Structural Iron Work of all descriptions

PILE . . . DRIVING

On land and water by steam.
Pile drivers or drop hammers.
Dams, wharves, bridge building,
trestle work and general contract-
ing.
Submarine diving and all kinds
of submarine work.



We have always a stock in hand to
let of:
Diving Outfits, Portable Boil-
ers, Hoisting and Pumping
Machinery, Etc.

WM. HOOD & SON
10 Richmond Sq. - MONTREAL

Established 1868
The Hanover Portland Cement Co., Ltd.
Hanover, Ontario
Manufacturers of the Celebrated
"SAUGEEN" Brand of PORTLAND CEMENT
Prices on application. Prompt shipments.

The Ontario Accident Insurance Co.

ACCIDENT, EMPLOYERS, ELEVATOR
AND GENERAL LIABILITY
104 St. Francois Xavier St. Montreal

RAILS For Contractors, Switches, Gir- ders, &c. New and Second Hand. LOCOMOTIVES AND CARS

John J. Gartshore
83 Front St. West,
(Opposite Queen's Hotel.) TORONTO

ELECTRICITY

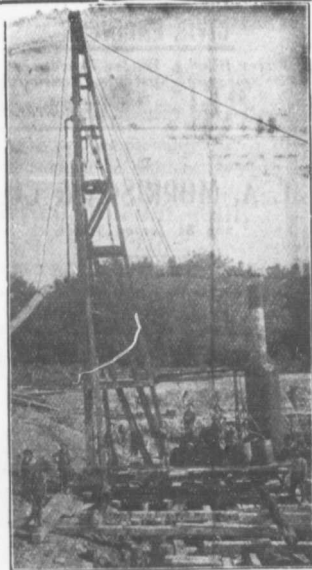
If you desire to keep posted on
the wonderful progress that is
taking place in the use of elec-
tricity for an almost endless var-
iety of purposes, you should sub-
scribe to the

Canadian Electrical News and Engineering Journal

A 44 PAGE MONTHLY.
PRICE \$1 PER YEAR

Write for free sample copy to

The G. H. Mortimer Publishing Co.
LIMITED
Toronto Montreal Winnipeg Vancouver



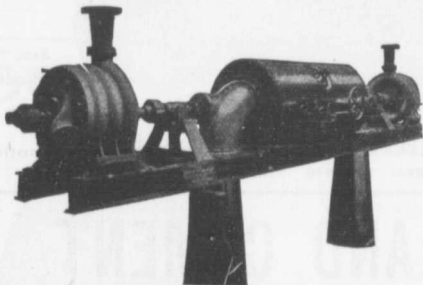
PILE DRIVING and Foundation Work.

By 5-ton Automatic Steam Pile Hammer,
Water Jet or Drop Hammers, Dock Build-
ing, Submarine Work and Dredging.

BUILDING MOVER AND WRECKER General Contracting.

JNO. E. RUSSELL, - Toronto
Residence, 1010 Queen St. E. - Phone M. 4226
Office and yard 307 Logan Ave. - Phone M. 2007

PUMPS FOR WATER WORKS



Two Worthington 3-Stage Turbine and McCormack
Water Wheels, built for Port Arthur, Ont., Water
Works, 1440 gal. per minute against 350 ft. head.

WATER WORKS SYSTEMS INSTALLED

Boilers, (Return Tube and Water
Tube,) Tanks, Penstocks,
Mill Machinery.

Builders in Canada of

"WORTHINGTON" TURBINE PUMPS

The John McDougall Caledonian Iron Works Co.,

Estimated Quantity Furnished

Montreal:

Limited.

SACKETT PLASTER BOARDS

Great time saver. Fire and sound proof. Cheaper than wooden and metal lath construction. In stock at Montreal and Toronto. Address

PERGIVAL W. ST. GEORGE,
80 St. Francois Xavier St. Montreal
R. E. H. BUCKNER,
Ont. Lime Association, Toronto

Brian D. McConnell
CIVIL ENGINEER

*Water Works, Water Powers,
Sewerage Systems, Railways*
Temple Building, MONTREAL
Phone Main 1473

T. A. MORRISON & CO.
204 St. James Street
MONTREAL

*Stone Crushers and Grinders
Steam Road Rollers
Fire Engines, Steam and Gasoline
Concrete and Macadam Stone*

J. HARVEY**CONTRACTOR**
PETROLEA, ONT.

Driller of Oil, Gas, Salt or Artesian Wells. Deep Wells a Specialty.



Contracts taken in any part of Canada. Several years experience in Artesian Wells for Municipal Water Works. Estimates or geological information cheerfully furnished.

REFERENCES GIVEN

--- MACHINE BANDED WOOD STAVE WATER PIPE ---

High pressure pipe for Water Works Systems, irrigation power plants, etc. Sizes 20" to 24", half the cost of cast iron. Write for Catalogue.

PACIFIC COAST PIPE CO., LTD. Box 563, Vancouver, B. C.

W. & F. P. CURRIE & CO.

345 St. James St., Montreal

Importers of

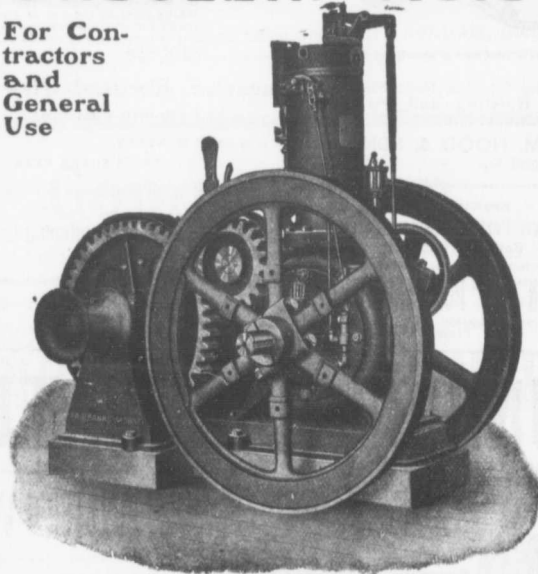
SEWER PIPES,
CULVERT PIPES, ETC.
VENT LININGS,
FLUE COVERS,
FIRE BRICKS,
FIRE CLAY,
WHITING.



PORTLAND CEMENTS,
HIGH GRADE ENGLISH
" " GERMAN
" " BELGIAN
PLASTER OF PARIS
BORAX,
CHINA CLAY.

GASOLENE HOISTS

For Contractors
and
General
Use



Equipped
with
Variable
Speed
Device.
Can be
started or
stopped in
a moment.

Clean
Safe
Economical

Send for
Circular

The Canadian Fairbanks Co., Limited
MONTREAL TORONTO WINNIPEG VANCOUVER

"RAVEN" PORTLAND CEMENT

— Unexcelled for Strength and Uniformity —

RAVEN LAKE PORTLAND CEMENT CO.

Limited

Long Distance Telephone: RAVENLAKE, ONT.

Telegraph and PostOffice Address: VICTORIA ROAD, ONT.

Hod
treat,
The
B. C.,
of purc
from th

Shirle

Genera

224

JOH

ME

HY

418 Cor

WIL

Consult
Construct
Bridges, Re
crete, Re
cations, R
for Inves
as 1
Main 132

T. J

CIVIL

Elec

Water

33 Ban

Municip

G.

24 and 25

THE CI

"HERI

Very h
walks, F
Highest G
address,

OI

The

Hodgson & Larin, plumbers, Montreal, have dissolved partnership.

The Town Council of Chilliwack, B.C., are considering the question of purchasing the waterworks system from the company now owning same.

Telephone: Main 5127.

Shirley Davidson, B. A. Sc.
(McGill University)

Contracting and Consulting Engineer
Bank of Ottawa Bldg.,
224 St. James Street, MONTREAL

JOHN T. FARMER
MECHANICAL and
HYDRAULIC ENGINEER

418 Coristine Bldg. - MONTREAL

WILLIAM FRY SCOTT
STRUCTURAL ENGINEER

Consultation or design: Buildings, Building Construction, Foundations, Walls, Roofs, Bridges, Masonry, Fireproof, Reinforced Concrete, Reinforced Brick, Steel Timber, Specifications, Examinations, Valuations, and Reports for Investment.
22 Toronto St., TORONTO, ONT.
Main 1324 North 4206

T. T. SIMPSON
CIVIL AND CONSULTING ENGINEER

Electric, Hydraulic Plants,
Waterworks, Sewerage, Bridges.
33 Bank St. Chambers, OTTAWA.

Municipal and Other Bonds
and Debentures Bought
Highest Prices Paid.

G. A. STIMSON & CO.
24 and 26 King Street West - TORONTO

THE GREY AND BRUCE PORTLAND CEMENT COMPANY
of Shallow Lake, Limited.

Manufacturers of
BRAND OF
"HERCULES" PORTLAND CEMENT

Very finely ground. Unsurpassed for Sidewalks, Floors and all work requiring the Highest Grade of Portland Cement. For prices address,

A. D. CREASOR, Sec'y-Treas.
Head Office, Owen Sound, Ont.

Contractors to H. M. Governments

ALLAN, WHYTE & CO.

Clyde Patent Wire Rope Works, Rutherglen, Glasgow, Scotland

WIRE ROPES for Cableways, Aerial Ropeways, Elevators, Cranes, Derricks, Pile Driving, Drilling, etc.

Large stocks carried by **DRUMMOND, McCALL & CO.,**
MONTREAL AND TORONTO

Crushed Stone and Slag

Best for Concrete. Any quantity shipped promptly.
Get our prices. Long distance phone 286.

Doolittle & Wilcox, Limited, Dundas, Ont.

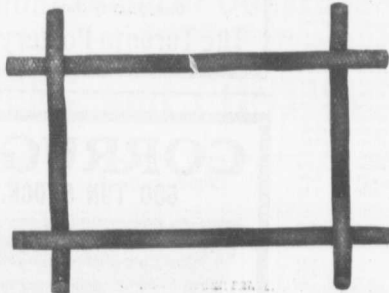
Advertisements
in the
CONTRACT
RECORD
bring
results

THE UNITED STATES FIDELITY AND GUARANTY Co.



Acts as Sureties on
Contractors' Bids or Tenders
and on Final Bonds
Rates Reasonable. See our Agent
in your town or write direct to us
Head Office for Canada:
6 Colborne Street, Toronto
A. E. KIRKPATRICK, MANAGER

WE WILL BOND YOU



CONCRETE BONDING
OF
CRIMPED STEEL WIRE

**THE STRONGEST,
BEST AND CHEAPEST**

If interested write for pamphlet and full particulars

THE B. GREENING WIRE CO. LIMITED
HAMILTON, ONT.
MONTREAL, QUE.

OUR DUPLEX CATCH BASIN



has been recommended by eminent Engineers as the
MOST CONVENIENT FOR GUTTER WORK
Can be adjusted to different heights and is easily placed.

We also Make

Manhole Covers and Frames
Hydrants and General Castings

The R. McDOUGALL COMPANY, Limited,
GALT, CANADA.

Prices of Building Material

PRESSED BRICK, Per M.

TORONTO PRESSED BRICK AND TERRA COTTA WORK
F. O. B.
Milton, Ont.

Red No. 1.....	\$13 00
" 2.....	11 50
" 3.....	10 00
Buff No. 1.....	17 00
" 2.....	13 00
Brown.....	25 00
Roman Red.....	30 00
" Buff.....	35 00
" Brown.....	40 00
Hard Building.....	8 00
" Sewer.....	8 00
" Backing.....	7 00
Monumental Ornamental from \$2.00 to \$5.00 per 100.	
Terra Cotta string Courses and Frieze, from 50c. to \$2.00 per ft. run.	
Roofing Tiles, \$20.00 per 1,000.	

DON VALLEY BRICK WORKS.

Nos. 1, and 2, Red PRESSED Bricks.....	
Nos. 1 and 2 Buff PRESSED Bricks.....	
No. 1 Brown PRESSED Bricks.....	
Pompeian Red, Buff and Brown PRESSED Bricks.....	
Ornamental Bricks of all kinds for Mantel purposes.....	
Enameled Bricks of all Colors.....	
Porous Terra Cotta Fireproofing of all Descriptions.....	
Vitrified Street-Paving Bricks.....	
Semi-Vitrified Foundation Bricks.....	
Common Stock Red and Grey Bricks.....	
Sewer Bricks.....	
Stone or Macadamized Roadways.....	

Please write to head office, 34 Toronto St., Toronto, for catalogue and prices.

BRAMSVILLE BRICK AND TERRA COTTA CO.

F. O. B.
Bramsville.

Red Peerless Facing.....	\$16 00
" No. 1.....	14 00
" No. 2.....	12 00
" No. 3.....	10 00
Brown Peerless Facing.....	20 00
" No. 1.....	18 00
" No. 2.....	15 00
" No. 3.....	12 00
Moulded and Ornamental Brick from \$3 to \$10 per C	
Roman Red (Size 12 x 4 x 2 1/2 in.).....	30 00
" Buff.....	25 00
" Brown.....	10 00
Vitrified Paving Brick No. 1.....	15 00
" No. 2.....	8 00
Sewer.....	22 00
Roofing Tile.....	22 00

LUMBER

CAR OR CARGO LOTS, F. O. B. TORONTO.

Per M. Ft.

1 inch No. 1 Pine cuts and better \$29.00 to \$31.00	
1 1/2 to 2 inch No. 1 cuts and better	54.00 56.00
1 inch No. 3. Pine cuts and better	38.00 40.00
1 1/2 to 2 inch No. 3 cuts and better	40.00 42.00
1 inch Pine Dressing and better shorts.....	24.00 26.00
1 x 4, 6 and 8 Common.....	20.00 21.00
1 x 10 and 12 Common.....	21.00 24.00
1 inch mill run sidings.....	21.00 22.00
1 inch mill run.....	21.00 22.00
1 x 10 and 12 mill culls.....	17.00 18.00
1 inch dead cull sidings.....	12.00 13.00
1 1/2 inch Flooring.....	27.00 28.00
Hemlock, 1 x 4 to 8 inch.....	17.00 18.00
2 x 4 to 8 inch, 12 to 16 feet.....	18.00 22.00
2 x 4 to 10 inch, 18 feet.....	20.00 19.00
1 1/2 inch No. 1 4 ft. Pine Lath.....	4.75 5.00
1 1/2 inch No. 3 4 ft. Lath.....	4.00 4.25
1 1/2 inch No. 1 4 ft. Hemlock Lath.....	3.50 3.50
XXXX Pine Shingles.....	30.00 3.25
XX Cedar Shingles.....	2.25 3.50
B.C. Shingles:	
XXX 6 butts to 2 inch.....	3.25
XXXX 6 to 23-16 inch.....	3.47
XXXXX 5 to 2 inch.....	3.50

HARDWOODS—PER M. FRET CAR LOTS.

Ash, white, 1sts and 2nds, 1 to 2 inch.....	\$33.00 to \$35.00
Ash, black, 1sts and 2nds, 1 to 1 1/2 inch.....	28.00 30.00
Birch, M. R. 1 inch.....	22.00 24.00
" 1 1/2 inch to 2.....	23.00 25.00
Basswood, Common and better, 1 to 1 1/2 inch.....	21.00 21.00
Basswood, 1 1/2 to 2 inch.....	24.00 26.00
Elm, soft, mill run, 1 to 1 1/2 in.	23.00 24.00
Elm, rock, mill run, 1 to 1 1/2 in.	23.00 25.00
Maple, common and better, 1 to 1 1/2 inch.....	23.00 23.00
Oak, red plain, 1sts and 2nds, 2 to 4 inch.....	44.00 46.00
Oak, white, 1sts and 2nds, 1 to 1 1/2 inch.....	42.00 44.00
Oak, quartered, 1sts and 2nds.....	70.00 80.00

WESTERN DEBENTURES

We are always open to buy all classes of Manitoba, Saskatchewan and Alberta Debentures.

We are the largest buyers of Western School Debentures in the Dominion of Canada.

NAY, ANDERSON & CO.

Successors to J. W. NAY Regina, Sask.

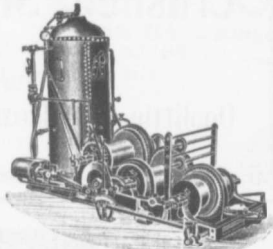
Lafarge (NON-STAINING) Cement

PORTLAND CEMENT
DRAIN PIPES
CULVERT PIPES
SEWER BOTTOMS

FIRE BRICKS
FIRE CLAY
SEWER BRICK

F. HYDE & CO.,

King, Queen and Wellington Sts. - MONTREAL



M. BEATTY & SONS, Limited
WELLAND, ONTARIO, CANADA

DREDGES, DITCHERS, DERRICKS,
STEAM SHOVELS,

Submarine Rock Drilling Machinery,
Mine Hoists, Hoisting Engines
Centrifugal Pumps for Water and Sand
Stone Derricks, Clam Shell Buckets,
Steel Skips, Coal and Concrete Tubs,
and other Contractors' Machinery.

Office 75 Cottingham Street
Yards 75-81
Long Distance Phone North 1787.

DISTRIBUTORS



VULCANITE
PORTLAND CEMENT

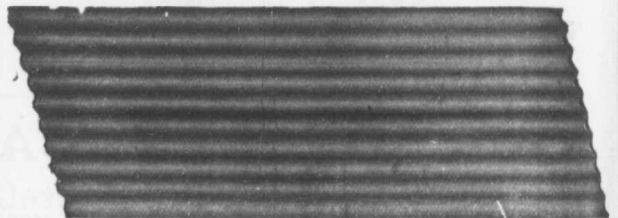
The Recognized Standard
for Sidewalks

A strictly High-Grade Portland Cement. Pronounced by prominent contractors to be the most Uniform Portland Cement on the market.

One Quality Only. Capacity 5,000 bbls. per day.

The Toronto Pottery Co., Limited, Toronto, Ont.

CORRUGATED IRON
600 TON STOCK. PROMPT DELIVERY.



Pedlar's Corrugated Steel Sheets are manufactured on a 38,000 lb. Oh Press—one corrugation at a time—and are guaranteed straight and true to size Six Hundred Tons in Stock in Oshawa, Montreal, Toronto, Ottawa and London, in gauges varying from 28 to 18, both painted and galvanized. Made in 4", 2" or 2 1/2" corrugation—corrugation lengthwise or across the sheet. Sheets 2 3/4, 5, 6, 8 or 10 feet long at no extra charge. Ask for Catalogue No. 14 R and give specifications for prices.

We are the largest makers of Sheet Metal under the British Flag.
ESTABLISHED 1861 — CAPITAL INVESTED, \$250,000.

THE PEDLAR PEOPLE

Montreal, Que. Ottawa, Ont. Toronto, Ont. London, Ont. Winnipeg, Man. Vancouver, B.C.
391-3 Craig St. W. 425 Dundas St. 11 Colborne St. 64 Dundas St. 161 Lombard St. 615 Jender St.

Write your nearest office. Head office and Works, OSHAWA, ONT.
"Keeping Everlastingly at It Brings Success."



Head Office and Works,
Toronto, Ont.

CAST IRON PIPE FOR WATER OR GAS

Special Castings,

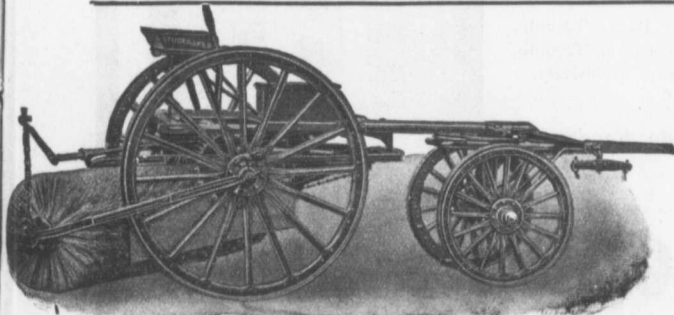
Tees, Crosses, Flanges Pipe, Valves, Hydrants,
Stand Pipes, Valve Boxes, Drinking and Ornamental Fountains.

District Offices: MONTREAL, HALIFAX, OTTAWA, WINNIPEG, VANGOUVER, ROSSLAND

The **British Columbia General Contract Company, Limited**
Telegraphic Address: "Dredging" Fairfield Building, VANGOUVER, B. C.

ENGINEERS and CONTRACTORS

Municipal Works and Buildings	Concrete Construction	Railways
Bridges	Harbor Works	Dredging and Reclamation



Stackpole **Street Sweeping Machine** is the Standard of Perfection

Patent Improved Because no sweeper so effectually does the work for which it is designed as "The Studebaker." It Sweeps Clean. No sweeper is constructed with the same degree of care and mechanical precision. It Wears Well. "The Studebaker" has the smallest number of working parts, and has less gearing than any other sweeper made. It is free from all unnecessary complications. With reasonable care it does not get out of order. Send for complete descriptive catalogue.



Studebaker Sprinkler
(PATENT IMPROVED.)

Does not clog or get out of order. Greatest width of spray Can be graded from driver's seat to any volume.

IMPROVED VERTICAL SPRAY

for Pavements

Geo. Herman, Mnfr., London, Ont.

906
it
EAL
imited
KS,
d Sand
inery.
ORS
T
nt.
ON
00 lb. Oh
true to size
to, Ottawa
ized. Made
Sheets 2
No. 14 R
g.
ancouver, B.C.
15 Leader St.
A. ONT.



Ransome Concrete Mixers

are the most up-to-date mixers on the market.

SIMPLE IN CONSTRUCTION - EFFICIENT - EASY TO OPERATE

Let us explain how you
can save
\$18 to \$20 per week

Mixers supplied, with or without
power—All capacities.

The illustration shows the Home Bank, Toronto,
built by R. A. Rogers & Co., Contractors, Toronto,
who own and operate Ransome Mixers exclusively.

Let us send you our *Concrete Handbook*



F. H. Hopkins & Co.

Successors to the Late James Cooper
MONTREAL

Dunn Bros., Winnipeg, Agents
Gorman & Clancy, Alberta Agents.