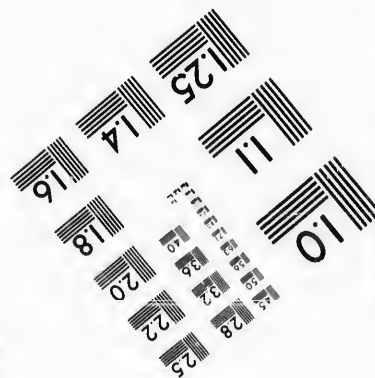
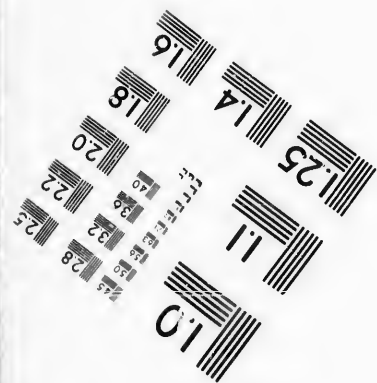
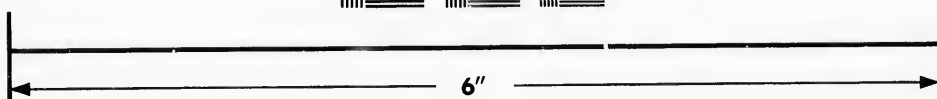
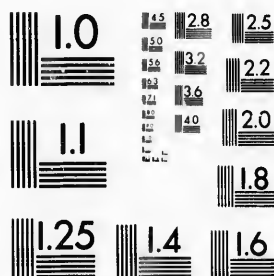


**IMAGE EVALUATION
TEST TARGET (MT-3)**



**Photographic
Sciences
Corporation**

23 WEST MAIN STREET
WEBSTER, N.Y. 14580
(716) 872-4503

15
28
32
25
36
22
20
18

**CIHM/ICMH
Microfiche
Series.**

**CIHM/ICMH
Collection de
microfiches.**



Canadian Institute for Historical Microreproductions / Institut canadien de microreproductions historiques

11
10
15

© 1987

The copy filmed here has been reproduced thanks to the generosity of:

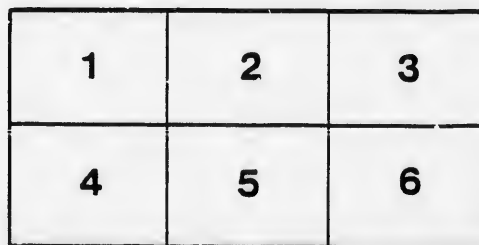
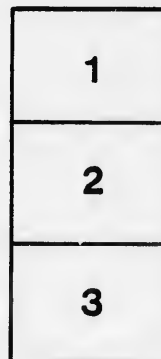
D. B. Weldon Library
University of Western Ontario
(Regional History Room)

The images appearing here are the best quality possible considering the condition and legibility of the original copy and in keeping with the filming contract specifications.

Original copies in printed paper covers are filmed beginning with the front cover and ending on the last page with a printed or illustrated impression, or the back cover when appropriate. All other original copies are filmed beginning on the first page with a printed or illustrated impression, and ending on the last page with a printed or illustrated impression.

The last recorded frame on each microfiche shall contain the symbol \rightarrow (meaning "CONTINUED"), or the symbol ∇ (meaning "END"), whichever applies.

Maps, plates, charts, etc., may be filmed at different reduction ratios. Those too large to be entirely included in one exposure are filmed beginning in the upper left hand corner, left to right and top to bottom, as many frames as required. The following diagrams illustrate the method:



L'exemplaire filmé fut reproduit grâce à la générosité de:

D. B. Weldon Library
University of Western Ontario
(Regional History Room)

Les images suivantes ont été reproduites avec le plus grand soin, compte tenu de la condition et de la netteté de l'exemplaire filmé, et en conformité avec les conditions du contrat de filmage.

Les exemplaires originaux dont la couverture en papier est imprimée sont filmés en commençant par le premier plat et en terminant soit par la dernière page qui comporte une empreinte d'impression ou d'illustration, soit par le second plat, selon le cas. Tous les autres exemplaires originaux sont filmés en commençant par la première page qui comporte une empreinte d'impression ou d'illustration et en terminant par la dernière page qui comporte une telle empreinte.

Un des symboles suivants apparaîtra sur la dernière image de chaque microfiche, selon le cas: le symbole \rightarrow signifie "A SUIVRE", le symbole ∇ signifie "FIN".

Les cartes, planches, tableaux, etc., peuvent être filmés à des taux de réduction différents. Lorsque le document est trop grand pour être reproduit en un seul cliché, il est filmé à partir de l'angle supérieur gauche, de gauche à droite, et de haut en bas, en prenant le nombre d'images nécessaire. Les diagrammes suivants illustrent la méthode.

tails
du
odifier
une
image

rata
o

pelure.
à

32X

LIST OF VOTERS

FOR THE

Township of Caradoc

FOR THE

YEAR 1898.

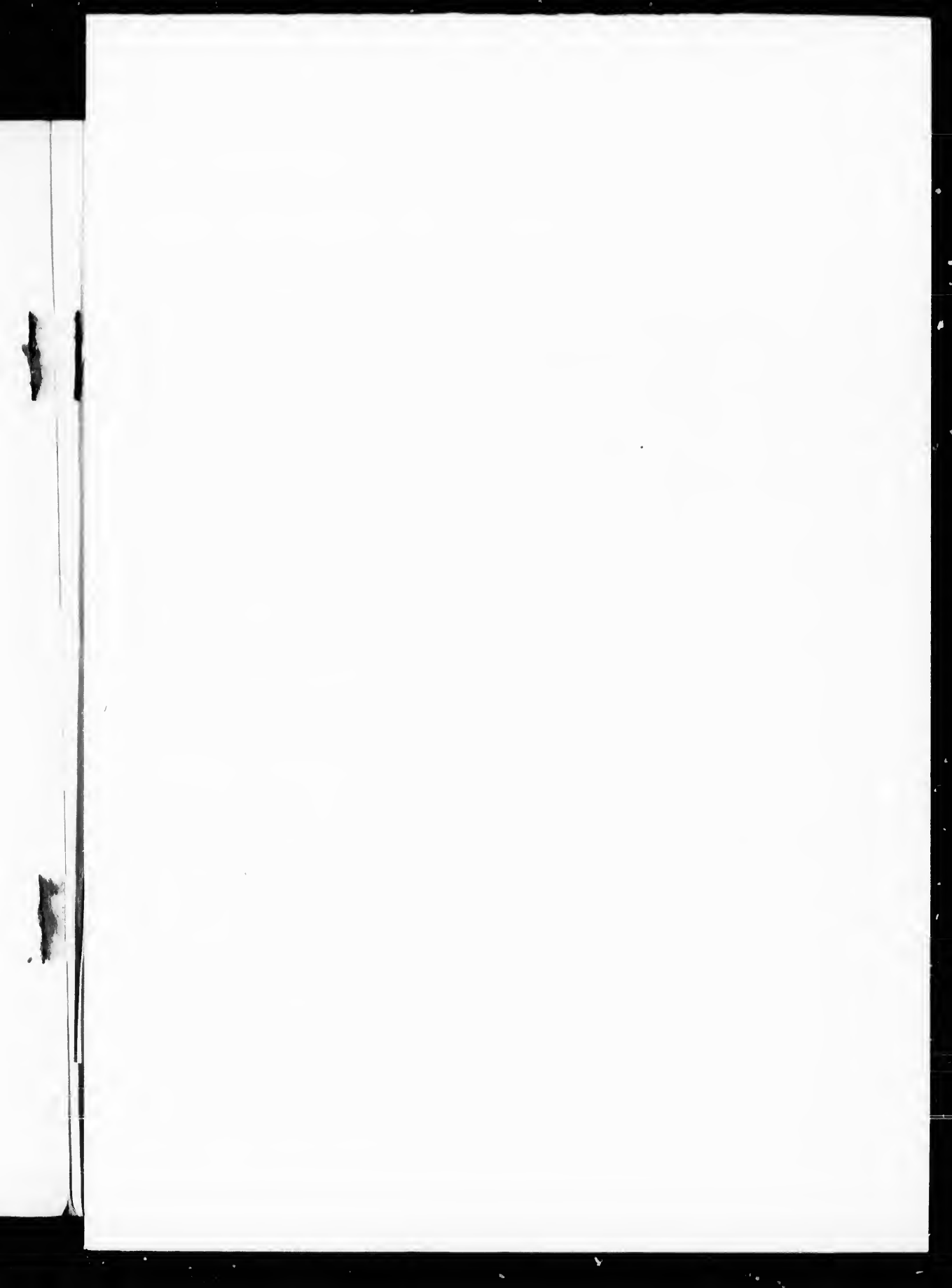


STRATHROY :
EVANS BROTHERS, PUBLISHERS.
1898.

SCHEDULE OF POST OFFICES.

- | | |
|------------------|-------------------|
| 1. MT. BRIDGES, | 14. BURWELL ROAD. |
| 2. STRATHROY, | 15. LONDON, |
| 3. DELAWARE, | 16. HAMILTON, |
| 4. MUNCEY, | 17. BYRON, |
| 5. MELBOURNE, | 18. ST. THOMAS, |
| 6. CHRISTINA, | 19. TEMPO, |
| 7. GLEN OAK, | 20. GLENCOE, |
| 8. CAIRNGORM, | 21. ROOME, |
| 9. AMIENS, | 22. SARNIA, |
| 10. KOMOKA, | 23. TORONTO, |
| 11. POPLAR HILL, | 24. ARKONA, |
| 12. LONGWOOD, | 25. WINDSOR, |
| 13. OSMAN, | 26. MT. SALEM. |

27 Granbaker



S

1. MT. BRY
2. STRATHRA
3. DELAWARE
4. MUNCEY,
5. MELBOURNE,
6. CHRISTINA,
7. GLEN OAK,
8. CAIRNGORM,
9. AMIENS,
10. KOMOKA,
11. POPLAR HILL,
12. LONGWOOD,
13. OSMAN,
14. TORONTO,
15. ARKONA,
25. WINDSOR,
26. MT. SALEM

27 Hanbaker

VOTERS' LIST, 1898, Municipality of Caradoc.

Polling Sub-Division No. 1,

Comprising all that portion of the Township lying East of the Side Road between
Lots 12 and 13, and South of the 1st Con.

Polling Place at School House, School Section No. 3.

PART I. Persons Entitled to Vote at BOTH Municipal Elections and Elections to the Legislative Assembly.

No. on Roll.	NAME	LOT.	Concession or Street	Other Description.	P.O.	Occupation.
21	Anderson, John D.	lot 18	Concession 1 s	M F and O	5	Farmer
25	Allan, Robert	lot 21	Concession 1 n	M F and O	3	Farmer
	Allan, Wm H.	lot 21	Concession 1 n	M F & F S	3	Farmer
28	Adams, Wm H.	lot 19	Concession 2 s	M F and T	3	Farmer
29	Adams, Byron A.	lot 19	Concession 2 s	M F & F S	3	Farmer
114	Brown, David C.	lots 22 and 23	Concession 1 n	M F and O	3	Farmer
127	Bateman, George	lot 4	Concession m r	M F and O	4	Farmer
133	Brodie, Duncan	lot 18	Concession 3 s	M F and O	14	Farmer
137	Brodie, Hugh	lot 6	Concession m r	M F and O	14	Farmer
126	Brodie, John	lot 6	Concession m r	M F and O	4	Farmer
135	Bateman, Charles	lot 18	Concession 3 s	M F and O	14	Farmer
136	Bateman, Melville	lot 18	Concession 3 s	M F and O	14	Farmer
125	Bartlett, Wm	lot 17	Concession 1 s	M F and O	3	Farmer
128	Broom, Samuel	lot 4	Concession m r	M F and O	4	Farmer

Polling Sub Division No. 1.

Jur	No on Roll.	NAME.	LOT.	Concession or Street.	Other Description.	P. O.	Occupation.
	131	Burwell, Mahlon	n pt 17	r 5 s	M F and O	14.	Farmer
	132	Burwell, Geo V	pt 18	r 4 s	M F and O	14.	Farmer
	130	Burwell, John M	pt s hf s hf 17	r 4 s	M F and O	14	Farmer
	134	Bartlett, Jonathan	s hf 19, pt s hf 20	r 1 s	M F and O	3.	Farmer
	124	Brown, Robert	s hf 16	r 1 e	M F and T	3.	Farmer
	129	Ball, John A	pt 12	r 5 s	M F and T	4.	Farmer
	261	Cramer, John	n e cor 20	r 1 s	M F and T	3.	Laborer
	287	Clark, John G	n pt 19	r 4 s	M F and O	14	Farmer
	276	Coulter, John	w hf 4	w m r	M F and O	4.	Farmer
	273	Collins, Thomas	e hf 5	w m r	M F and O	4.	Farmer
	274	Collins, James O	e hf 5	w m r	M F & F S	4	Farmer
	262	Carruthers, Geo B	s hf 16, pt 15	r 1 n	M F and O	6.	Farmer
	263	Carruthers, Geo A	s hf 16, pt 15	r 1 n	M F & F S	6.	Farmer
	275	Cox, James	6	w m r	M F and O	4.	Farmer
	284	Carmichael, Robt sr	n e cor 1	e m r	M F and O	4	Farmer
	289	Coveny, Thomas	n hf 19	r 3 s	M F and O	11.	Farmer
	143	Coveny, John	s hf 17	r 3 s	M F and O	14.	Farmer
	282	Cobban, Wm	s pt 3	w m r	M F and O	14	Farmer
	283	Cobban, John	s pt 3	w m r	M F & F S	4.	Farmer
	134	Chambers, James	King st 5, Del W	r 1 n	M F and O	3	Gentlem'n
	285	Chambers, John B	pt 12	r 5 s	M F and O	4.	Farmer
	272	Cobban, Robert	s pt 12	e m r	M F and O	4.	Farmer
	277	Clark, John N	n hf 3	e m r	M F and O	4	Farmer
	278	Clark, Alex	n hf 3	e m r	M F & F S	4.	Farmer
	279	Clark, Nathaniel	n hf 3	e m r	M F & F S	4.	Farmer
	280	Clark, John	n hf 3	e m r	M F & F S	4.	Farmer
	257	Coy, Richard	pt n hf 21	r 1 n	M F and O	1.	Farmer

Polling Sub-Division No. 1.

Par	No. on Roll	NAME.	LOT.	Concession or Street.	Other Description.	P.O.	Occupation.
	J254	Colvin, Andrew	... hf n hf 19	... r 1 n	... M F and O	1	Farmer
	J253	Clark, Joseph	... pts 18 and 19	... r 1 n	... M F and O	1	Miller
	J330	Donaldson, David J	... n hf 20	... r 1 s	... M F and O	3	Farmer
	329	Dannt, George	... pt n hf 20	... r 1 n	... M F and O	3	Pump ufr
	J322	Dingman, Chas W	... w hf s hf 19	... r 1 n	... M F and O	1	Farmer
	345	Erwin, George	... e hf s hf 14	... r 1 s	... M F and O	6	Farmer
	346	Erwin, Albert	... e hf s hf 14	... r 1 s	... M F & F S	6	Farmer
	J347	Erwin, James	... w hf s hf 14	... r 1 s	... M F and O	6	Farmer
	343	Evison, William	... pt s w eor 18	... r 1 n	... M F and O	3	Laborer
	1363	Evison, Wm sr	... pt s w eor 18	... r 1 n	... M F and T	3	Laborer
	1362	Evison, Frank	... pt n hf 22	... r 1 n	... M F and T	3	Farmer
	J372	Fisher, William	... n hf 20	... r 1 n	... M F and T	3	Farmer
	J376	Fisher, Jas jr	... n hf 16	... r 1 s	... M F and T	6	Farmer
	377	Fisher, Jas sr	... n hf 13	... r 1 s	... M F and O	6	Farmer
	378	Fisher, Wm H	... n hf 13	... r 1 s	... M F & F S	6	Farmer
	379	Fisher, Francis	... n hf 13	... r 1 s	... M F & F S	6	Farmer
	380	Fisher, Fred	... n hf 13	... r 1 s	... M F & F S	6	Farmer
	384	Faulds, Edward	... 7	... w m r	... M F & F S	4	Farmer
	383	Faulds, Thomas	... 7	... w m r	... M F and O	4	Farmer
	385	Faulds, Geo M	... 7	... w m r	... M F & F S	4	Farmer
	J386	Faulds, Wm M	... 2	... w m r	... M F and O	4	Farmer
	387	Forsythe, John	... s pt 1	... e m r	... M F and O	4	Carpent'r
	389	Forsythe, George	... s pt 1	... w m r	... M F and O	4	Farmer
	388	Forsythe, Arch	... s pt 1	... w m r	... M F and O	4	Carpent'r

CALL

Polling Sub-Division No. 1.

Jur.	No. on Roll.	NAME.	LOT.	Concession or Street.	Other Description.	P.O.	Occupation.	Jur.	No. on Roll.
	70	Fisher, Geo	pt 18	5 s	M F and O.	14	Farmer	3550	
	373	Fisher, B A	pt n hf 21 and o p	4 s	M F and O.	3	Farmer	544	
	381	Fisher, Jas H	pts s hf 13	1 n	M F and O.	6	Mechanic	3546	
	432	Giles, John	s hf 13	1 s	M F and O.	6	Farmer	547	
	433	Giles, Wm J	s hf 13	1 s	M F & F S.	6	Farmer	548	
	434	Giles, Robt H	s hf 13	1 s	M F & F S.	6	Farmer	549	
	440	Guest, Wm A	n hf 20	4 s	M F and O.	3	Farmer		
	442	Giles, Wm jr	22, 23, pt 21	4 s	M F and T.	3	Farmer	3565	
	441	Giles, Wm sr	3 & 4, King t,	Del w	1 n	M F and O.	3	Gentlem'n	566
	431	Gardiner, David	pts s hf 18	1 n	M F and O.	3	Engineer	567	
	439	Goodrich, Jos	pts s hf 17	1 s	M F and T.	6	Farmer		
	444	Greenslade, Wm	s pt 21	4 s	M F and T.	3	Farmer	1340	
	511	Haws, George	sw pt n hf 22	1 n	M F and O.	3	Farmer	3599	
	519	Haws, John	pt 4 and 5	e m r	M F and T.	14	Farmer	3597	
	520	Haws, Henry	pt 4 and 5	e m r	M F & F S.	14	Farmer	59	
	521	Haws, John R	pt 4 and 5	e m r	M F & F S.	14	Farmer	3608	
	522	Haws, Wm H	pt 4 and 5	e m r	M F & F S.	14	Farmer	3610	
	512	Hatley, Wesley	sw hf s hf 15	1 n	M F and O.	6	Farmer	612	
	526	Howe, John F	n hf 17	2 s	M F and O.	3	Farmer	3607	
	523	Haggerty, John sr	s hf 20 and o p	4 s	M F and O.	14	Farmer	3609	
	524	Haggerty, George	s hf 20 and o p	4 s	M F and O.	14	Farmer	60	
	525	Haggerty, Swanton	s hf 20 and o p	4 s	M F & F S.	14	Farmer	360	
	528	Haggerty, John jr	pt n hf 18	w m r	M F and T.	14	Farmer	134	
	541	Janes, Henry	s w cor s hf 20 and o p	1 n	M F and O.	3	Brick & Tile	60	
	542	Janes, Henry W	s w cor s hf 20 and o p	1 n	M F & F S.	3	Brick & Tile	61	

Rolling Sub-Division No. 1.

Par. No. on Roll.	NAME.	LOT.	Concession or Street	Other Description.	P. O.	Occupation.
550	Jenkins, Alfred	pt s hf 17	r 1 s	M F and O	3	Blacks'th
544	Jones, Edwin	Bkn Ft 20	r 5 s	M F and O	14	Farmer
546	Jarman, Henry jr.	n hf n hf 20	r 2 s	M F and O	3	Farmer
547	Jarman, Sidney	s hf n hf 20	r 2 s	M F and O	3	Farmer
548	Jarman, Henry	s hf n hf 20	r 2 s	M F & F S	3	Farmer
549	Jarman, John	s hf n hf 20	r 2 s	M F & F S	3	Farmer
555	Kershaw, Charles	n w pt n hf 19	r 1 s	M F and O	3	Farmer
566	King, Thomas	s cor s hf 17	r 2 s	M F and O	3	Farmer
567	King, Wm T	s cor s hf 17	r 2 s	M F and T	3	Farmer
1346	Lewis, John	Birm st 21,22,23,Del w r 1 n	r 1 n	M F and O	3	Carpent'r
599	Lowthian, Rich V	pt 23	r 1 n	M F and O	3	Farmer
597	Lockwood, Henry jr	s pt n hf 20 & o p r 1 s, r 1 n	r 1 s, r 1 n	M F and O	20	Farmer
598	Lockwood, Daniel B	s pt n hf 20 & o p r 1 s, r 1 n	r 1 s, r 1 n	M F & F S	3	Farmer
608	Lockwood, Wm W	pt s hf 20	r 1 n	M F and O	3	Farmer
610	Luce, Asa	pt 17	r 1 s, r 1 n	M F and O	3	Farmer
611	Luce, George	pt 17	r 1 s, r 1 n	M F & F S	3	Farmer
612	Luce, Joseph	pt 17	r 1 s, r 1 n	M F & F S	3	Farmer
607	Lockwood, John A	n hf 15	r 1 s	M F and O	6	Farmer
602	Longfield, Wm H	24	r 1 s	M F and T	3	Farmer
603	Longfield, Wm H jr	24	r 1 s	M F & F S	3	Farmer
605	Laing, James	pt 2	e m r	M F and O	3	Farmer
1347	Lockwood, Henry sr	9 to 13 K st, Del w r 1 n	r 1 n	M F and O	3	Gentlem'n
606	Laing, Wm J	pt 12	e m r	M F and T	3	Merchant
617	Lewis, Chas M	pt 12	e m r	M F and O	4	Blacks'th
604	Lockwood, Geo F	s hf 22	r 1 n	M F and O	3	Farmer

Polling Sub-Division No. 1.

Jur.	No. on Roll.	NAME.	LOT.	Concession or Street.	Other Description.	P.O.	Occupation.
	641	Mathers, Edward	pt n hf 22	r 1 n	M F and T	3	Laborer
	756	McKenzie, John	s w cor s hf 13	r 1 n	M F and O	6	Merchant
	762	McGregor, Peter	pt 1 and D	w m r	M F and O	4	Farmer
	763	McGregor, Thos	pt D	w m r	M F and O	4	Farmer
	765	McGregor, John jr.	s pt D	w m r	M F and O	4	Farmer
	1348	McFee, Alex	Bir st 18,19,20, Del w	r 1 n	M F and O	3	Laborer
	769	McDonald, Thos	n hf n hf 17	r 3 s	M F and O	14	Farmer
	755	McDonald, Hartman	n hf 21	r 1 n	M F and T	1	Farmer
	753	McLean, Hector	n hf 15	r 1 n	M F and T	1	Farmer
	768	McLachlan, Lachlan	21	r 4 s	M F and T	14	Farmer
	793	Nagle, John	s pt 19	r 1 n	M F and O	3	Farmer
	794	Nagle, Walter	e hf n hf 17	r 1 s	M F and O	3	Farmer
	795	Nash, Ephraim	n hf 14	r 1 s	M F and O	6	Farmer
	796	Nash, Franklin	n hf 14	r 1 s	M F & F S	6	Farmer
	7804	Nagle, Robert	s hf 18	r 1 s	M F and O	3	Farmer
	805	Nagle, Francis E.	s hf 18	r 1 s	M F & F S	3	Farmer
	801	Nagle, Samuel	n pt 3	w m r	M F and O	4	Farmer
	1349	Nagle, Thomas	K st, 1 and 2, Del w	r 1 n	M F and O	3	Gentlem'n
	803	Nagle, John G.	n hf 18	r 2 s	M F & F S	3	Farmer
	7810	Orr, Rowland	w pt n hf 5	w m r	M F and O	6	Farmer
	887	Pulling, Rich H	w hf s hf 18	r 2 s	M F & F S	14	Farmer
	7886	Pulling, James	w hf s hf 18	r 2 s	M F and O	14	Farmer
	7885	Pulling, Henry	pt s hf s hf 17	r 2 s	M F and O	14	Farmer

Polling Sub-Division No. 1.

No. on Roll.	NAME.	LOT.	Concession or Street.	Other Description.	P.O.	Occupation.
1352	Portsmouth, Peter	.26 and o p,	Del w . r 1 n	M F and T	3.	Agent
1354	Portsmouth, Richd	.26 and o p,	Del w . r 1 n	M F and T	3.	Agent
1353	Portsmouth, A E.	.26 and o p,	Del w	r 1 n	M F and T	3. Farmer
J882	Price, Richard J.	s hf 8 and o p	w m r	M F & F S	14.	Farmer
881	Price, Charles F	s hf 8 and o p	w m r	M F & F S	14.	Teacher
1356	Penfold, John pt 23 and 24	r 1 n	M F & F S	3.	Farmer
J1355	Penfold, Henry pt 23, 24 and o p	r 1 n	M F and O	3.	Farmer
1350	Pulling, Wm Sewel lot&6,7, Del w . r 1 n	M F and O	3.	Carpenter	
878	Pincombe, Robt pt s hf 21	r 1 s	M F and T	3.	Farmer
879	Pincombe, Geo pt s hf 21	r 1 s	M F and T	3.	Farmer
883	Price, Wm s hf 8 and o p	w m r	M F & F S	14.	Farmer
J940	Reep, Wm sr n w pt 20	r 3 s	M F and O	3.	Farmer
J941	Rcep, Wm jr n w pt 20	r 3 s	M F & F S	3.	Farmer
J942	Reep, John n w pt 20	r 3 s	M F & F S	3.	Farmer
J924	Roskey, Wm H pt gore 20 and 21	r 1 n	M F and O	1.	Miller
J931	Robinson, Robt w hf 5	e m r	M F and O	4.	Farmer
932	Robinson, Robt E. w hf 5	e m r	M F & F S	4.	Farmer
J933	Reily, John D. e hf s hf 19	r 2 s	M F and O	14.	Farmer
J934	Reily, Wm H w hf s hf 19, pt 18	r 2 s	M F and O	14.	Farmer
935	Reily, Hazel w hf s hf 19, pt 18	r 2 s	M F & F S	14.	Student
J938	Reily, Wm J pt blk A	e m r	M F and T	14.	Farmer
J939	Reily, Robt H. pt blk A	e m r	M F and T	14.	Farmer
936	Reily, Cecil w hf s hf 19, pt 18	r 2 s	M F & F S	14.	Student
J1039	Stuart, William e pt n hf 5	w m r	M F and O	6.	Farmer
J1034	Seabrook, Sidney 22, 23, pt 21	r 1 s	M F and O	3.	Farmer
1035	Seabrook, Arch 22, 23, pt 21	r 1 s	M F & F S	3.	Farmer

Polling Sub-Division No. 1.

Jur. No. on Roll.	NAME.	LOT.	Concession or Street.	Other Description.	P.O.	Occupation.
1030	Smith, Robert	pt s hf 13	r 1 n	M F and O.	6.	Blacks'th
1037	Shaw, William	w hf s hf 15	r 1 s	M F and T.	6	Farmer
1038	Sweeney, John	s pt 21 and o p.	r 4 s	M F and O.	3.	Farmer
1080	Thompson, Thomas	s hf 14	r 1 n	M F and O.	6.	Farmer
1085	Toles, Peter	e pt s hf 18 and o p.	r 1 n	M F and O.	1.	Farmer
1087	Tull, Samuel	s hf 13	r 1 n	M F and O.	6.	Farmer
1088	Tull, David	s hf 13	r 1 n	M F & F S.	6.	Farmer
1078	Tull, John	n hf s hf 17 and o p.	r 2 s	M F and O.	1	Farmer
1091	Thomas, Joseph	s w pt 21	r 2 s	M F and T.	3	Farmer
1092	Thomas, Albert	s w pt 21	r 2 s	M F & F S.	3.	Farmer
1086	Toles, Fred	e pt s hf 18 and o p.	r 1 n	M F & F S.	1.	Farmer
1357	Vrooman, John	s Del w	r 1 n	M F and O.	3.	Agent
1100	Vennor, John	pt 1	e m r	M F and O.	4.	Carpent'r
1099	Vail, John	n hf 14	r 1 n	M F and O.	6.	Farmer
1183	Weld, Octavus	s hf 20	r 2 s	M F and O.	3.	Farmer
1160	Waters, Wm H.	n w cor n hf 18	r 1 n	M F and O.	1.	Farmer
1178	Whiting, Jas W.	n pt e hf 4	e m r	M F and O.	14.	Farmer
1179	Whiting, Wm C J.	n pt e hf 4	e m r	M F & F S.	14.	Farmer
1172	Williamson, John	e hf s hf 15	r 1 s	M F and O.	6.	Farmer
1177	Whiting, R F	pt 1	w m r	M F & F S.	4.	Farmer
1176	Whiting, Wm B.	pt 1	w m r	M F and O.	4	Farmer
1181	Walker, Barton	e hf 5	e m r	M F and O.	14	Farmer
1182	Walker, Arch	e hf 5	e m r	M F & F S.	14.	Farmer
1184	Wightman, James	n hf 17	r 4 s	M F and O.	14.	Farmer

Jur.	No. on Roll.	NAME.	LOT.	Concession or Street.	Other Description.	P.O.	Occupation.
	1186	Wightman, Michael.	n hf 17 r 4 s	M F & F S.	14.	Farmer
	1185	Wightman, Wm.	n hf 17 r 4 s	M F & F S.	14.	Farmer
	1187	Wightman, John	pts 18 and 19 r 4 s	M F and T.	3	Farmer

PART II.—Persons Entitled to Vote at Municipal Elections ONLY.

877 Acres, Henryw pt s hf 21 r 1 s Owner..... 3..Undert'er

121 Burwell, Rachel A. s hf 17..... r 5 s Owner.....15..Widow

754 Clark, Thursa....pt n hf 21 r 1 n . . . Owner 1..Widow

288 Clark, Nathaniel jr s e hf n hf 19 r 4 s..... Owner 14..

374 Cudney, Mrspt n hf 21 r 4 s Owner.....16. Widow

371 Fisher, Rachel ...n hf 20 r 1 n. Owner..... 3..Widow

W. Faulds Ed, 7 *9 M R owner 4* *CALL*

767 Gowanlock, George...pt 21 r 4 s..... Owner.....19..Farmer

438 Goodrich, Nancy .w cor s hf 17 r 1 s..... Owner..... 6..Widow

443 Greenslade, Wellington .pt 21 r 4 s Owner 3..Farmer

517 Higgs, Mary. s pt 1 r Owner 4..Spinster

545 Jarman, Henry sr. n hf n hf 20 r 2 s Owner..... 3..Gentle'an

766 McGregor, Jane .pt 12..... r 5 s..... Owner 4..Widow

802 Nagle, Amelia....n hf 18..... r 2 s Owner..... 3 .Widow

Jur.	No. on Roll.	NAME.	LOT.	Concession or Street.	Other Description.	P.O.	Occupation.
	880	Price, Mary	s hf 8 and o p	w m r	Owner	14	Widow
	527	Price, T E	pt n hf 18	w m r	Owner	23	Farmer
	1188	Rowland, Edward	pts 18 and 19	r 4 s	Owner	2	Banker
	518	Stuart, John	pt 4 and 5	e m r	Owner	14	Farmer
	937	Scott, Martha	pt blk A	e m r	Owner	2	Spinster
	510	Sutherland, Samuel	w pt n hf 22	r 1 n	Owner	3	Farmer
	1090	Weld, Henry J	s w pt 21	r 2 s	Owner	3	M D
	1166	Waters, Sarepta	pt n hf 18	r 1 n	Owner	3	Widow

PART III.—Persons Entitled to Vote at Elections to the Legislative Assembly ONLY.

	1372	Coulter, Frank	Reserve		M F	4	
	286	Craner, Jos	s hf 18	r 4 s	M F	4	Laborer
	1369	Craner, Sam	15	r 1 n	M F	6	Laborer
	144	Coveney, Richard	s hf 17	r 3 s	M F	14	Farmer
	145	Coveney, Edward	s hf 17	r 3 s	M F	14	Farmer
W		Looney John	2	RR 7	717	4	CH
W		Carmichael Robt	210	RR 7	717	4	CH
	331	Dartch, Wm	pt 17	r 4 s	M F	3	Sawyer
	332	Donovan, Wm	pt 17	r 4 s	M F	3	Farmer
	1366	Dunn, Richard	19	r 1 n	M F	3	Laborer
	1368	Dartch, Thomas	17	r 3 s	M F	14	Laborer
W		McLeary Louis	Reserve		717	4	CH
W		Fowler Fred	pt 10	R 50	717	4	CH
	445	Greenslade, Arthur	22	r 4 s	M F	3	Farmer
W		Gardner Chas	Reserve		717	4	CH
W		Fowler Chas	Reserve		717	4	CH
W		Donavon Jas	20	R 30	717	3	CH

Jur. No. o Roll
 536 I
 563 K
 564 K
 600 I
 1367 I
 764 M
 648 M
 1381 I
 884 I
 1036 S
 1379 S
 1175 S
 1174 S
 1380 S
 1169 S
 1162 S
 1173 S
 1036 S
 1174 S
 1380 S
 1169 S
 1162 S
 1173 S

Polling Sub-Division No. 2,

Comprising all that portion of the Township lying West of the Side Road between Lots 12 and 13, and South of the 2nd Con.

Polling Station at School House, School Section No. 1.

PART I.—Persons Entitled to Vote at BOTH Municipal Elections and Elections to the Legislative Assembly.

Jur. No. on Roll.	NAME.	LOT.	Concession or Street.	Other Description.	P.O.	Occupation.
1291	Acton, Sam	corner Mill prop	1 n	M F and O	5	Laborer
1106	Beattie, Samuel R.	w hf s hf 6	1	M F and O	5	Farmer
1107	Bateman, Allan W.	s hf 10	1	M F and O	6	Farmer
1115	Bateman, Wm R.	w qr s hf 12, pt 12	r 1 s. r 1 n	M F and O	6	Farmer
1117	Bateman, Thomas	w hf s hf 12	1 n	M F and O	6	Farmer
1119	Bateman, Ed A.	s hf 10	1 n	M F and O	6	Farmer
1120	Bateman, Arch C.	pt n hf 10 and o p	r 1 s	M F and O	6	Farmer
1116	Bateman, Chas T.	s e cor s hf 12 & o p	r 1 n, r 1 s	M F and O	6	Merchant
1123	Bateman, Sidney	s e cor s hf 12	1 s	M F and O	6	Farmer
1375	Bateman, Sidney	s e cor s hf 12	1 s	M F & F S	6	Farmer
1109	Bateman, Wellington	n hf 12	1 n	M F and T	6	Farmer
1294	Balsdon, Christopher J.	lot 12, Melb	1 n	M F and T	5	Tailor
1296	Beaumont, Robert	19 Melb	1 s	M F and O	5	Blacksmith
1295	Bancroft, Joseph	36, 37, 38 Melb	1 n	M F and O	5	Laborer
1292	Bennett, Geo N.	5 Melb	1 s	M F and O	5	Blacksmith
1241	Cawthrope, Geo	n hf 1 and o p	1 and 3	M F and O	12	Farmer

Jur. No. Roll
 J242
 237
 620
 J238
 J249
 250
 J235
 J244
 J245
 247
 J248
 J246
 264
 J265
 J271
 J270
 1300
 1364
 1075
 1302
 1 298
 1299
 268
 269
 J348
 J344

Polling Sub-Division No. 2.

Jur.	No on Roll.	NAME.	LOT.	Concession or Street	Other Description.	P. O.	Occupation.
	242	Cawthrope, Geo E.	n hf 1 and o p	1 and 3	M F & F S	12.	Farmer
	237	Clark, Nathaniel sr.	n hf 10	1	M F and O.	1.	Farmer
	620	Chalcraft, Edmund	pt n hf 9	r 1 n	M F and T.	6.	Cheese M
	238	Clark, William	n hf 10	1	M F & F S.	1.	Farmer
	249	Cavan, Charles	e hf s hf 4	1	M F and O.	5.	Farmer
	250	Cavan, Chas H	e hf s hf 4	1	M F & F S.	5.	Farmer
	235	Coleman, Darius	n hf 11	1	M F and G.	1.	Farmer
	244	Cooper, Geo F.	s hf w hf 2 and o p	1	M F and T.	5.	Farmer
	245	Cooper, Emerson	s hf w hf 2 and o p	1	M F and T.	5.	Farmer
	247	Caven, Hugh	w hf s hf 4	1	M F and O.	5.	Farmer
	248	Caven, Caleb	w pt n hf 1	r 1 n	M F and O.	5.	Farmer
	246	Caven, James	w hf s hf 4	1	M F and O.	5.	Farmer
	264	Carruthers, Robert	pt n hf 6, pt s hf 6	r 1 n	M F and O.	5.	Farmer
	265	Carruthers, Arthur	pt s hf 5, pt 6	r 1 n	M F and O.	5.	Farmer
	271	Carruthers, James	s hf 4, pt s hf 5	r 1 n	M F and O.	5.	Farmer
	270	Campbell, John C.	pt n hf 1	r 1 s	M F and O.	5.	Farmer
	1300	Coulter, Ralph	47, 48	r 1 n	M F and O.	5.	Carpent'r
	1364	Coulter, Thos	47, 48	r 1 n	M F and O.	5.	Carpent'r
	1075	Cooper, James	e hf n hf 2 and o p	1 & r 1 n	M F and O.	5.	Gentle'man
	1302	Cooper, John	55 and 56	r 1 n	M F and O.	5.	Merchant
	298	Campbell, Neil	sub lot 10, pt 1	r 1 n	M F and O.	5.	Blacksmith
	1299	Collier, James	29 and 30, Melb	r 1 s	M F and O.	5.	Sec Fore'm
	268	Clark, Louis	n hf 5	r 1 s	M F & F S.	5.	Farmer
	269	Clark, Joseph	n hf 5	r 1 s	M F & F S.	5.	Farmer
	<i>W Campbell Jos 17x18 Mul 7218 89780 5</i>						
	348	Errett, Thomas	n hf 3	r 1 n	M F and O.	5.	Farmer
	344	Errett, Henry	e hf s hf 7	r 1 n	M F and O.	5.	Farmer

1 between

1.

Elections

Occupation.
Laborer

Farmer

Farmer

Farmer

Farmer

Farmer

Merchant

Farmer

Farmer

Farmer

Tailor

Blacksmith

Laborer

Blacksmith

Farmer


Farmer

W Campbell Jos 17x18 Mul 7218 89780 5

Jur. No. on Roll.	NAME.	LOT.	Concession or Street.	Other Description.	P.O.	Occupation.
J382	Forsythe, Geo A.	e hf n hf 6	r 1 s	M F and O	5	Farmer
J369	Franklin, Edward.	e pt s hf 11	1	M F and T	6	Farmer
J437	Griffith, Fred L	s pt w hf 2	r 1 n	M F and O	5	Farmer
J436	Griffith, John B	s hf 3 and o p	r 1 n	M F and O	5	Farmer
J435	Grigg, Wm	s hf 5, pt 6	r 1 s	M F and O	5	Farmer
1312	Hoskins, Garibaldi.	8 Melb	r 1 s	M F and T	5	Tinsmith
J507	Howe, Edward	pt n hf 8	r 1 n	M F and O	6	Farmer
J506	Howe, Francis	s hf 8	1	M F and O	6	Farmer
J508	Howe, Timothy	s hf 12	1	M F and O	6	Farmer
514	Holloway, Alfred	e pt s hf 5	r 1 n	M F and O	5	Farmer
J516	Haggarty, James	s hf 6	r 1 s	M F and O	5	Farmer
J513	Haggarty, George J.	w hf n hf 8	r 1 s	M F and O	6	Farmer
1310	Harvey, Henry	s pt mill prop, Melb.	r 1 n	M F and O	5	Har Mak
1308	Hill, Frederick	43 and 44, Melb	r 1 n	M F and O	5	Farmer
1305	Hardy, Thomas	64 and 65, Melb.	r 1 n	M F and O	5	Gentlem'n
1306	Harvey, John	49, Melb	r 1 n	M F and O	5	Miller
1307	Harvey, John	43, Melb	r 1 n	M F and O	5	Laborer
1309	Harvey, Frank	pt n hf 1	r 1 s	M F and O	5	Carpent'r
1024	Hendry, James	e hf s hf 6 and o p	1	M F and O	5	Farmer
J500	Holmes, Albert	w hf n hf 2	r 1 n	M F and O	5	Farmer
515	Howell, Cecil	pt n hf 1	r 1 s	M F and O	5	V S
1314	Johnston, Arthur M.	7, 22, pt 21, Melb.	r 1 s	M F and O	5	Underta'er
1316	Johnston, Richard	pt e cor 1	r 1 n	M F and T	5	Barber
1313	James, John F.	pt 5, Melb	r 1 s	M F and O	5	M D
1315	Jones, Thos	sub 2	r 1 n	M F and O	5	Gentlem'n

Polling Sub-Division No. 2.

Occupation.	Jur.	No. on Roll.	NAME.	LOT.	Concession or Street.	Other Description.	P.O.	Occupation.
Farmer		558	Kidd, Thomas	hf 9	1	M F and O	6	Farmer
Farmer		559	Kidd, Jos K	e hf n hf 10	r 1 n	M F and O	6	Drover
Farmer		560	Kidd, John J	e hf n hf 10	r 1 n	M F and O	6	Farmer
Farmer		614	Lucas, Robert	pt s hf 11	r 1 s	M F and T	6	Farmer
Farmer		1318	Long, Joseph	3, 13 to 16, Melb	r 1 n	M F, O & T	5	Butcher
Tinsmith		1319	Long, Chas E	3, 13 to 16, Melb	r 1 n	M F and O	5	Butcher
Farmer		639	Muldon, John	w hf n hf 10	r 1 n	M F and O	6	Farmer
Farmer		1320	Marshman, Simeon	e hf 3	1	M F and O	5	Farmer
Farmer		642	Mills, James	s hf 9	r 1 n	M F and O	6	Farmer
Farmer		643	Mills, Alfred	s hf 9	r 1 n	M F & F S	6	Farmer
Farmer		645	Marshman, George	n w cor n hf 2	r 1 s	M F and O	5	Farmer
Har Mak		1321	Martin, D E	31, 35, 44, 45	r 1 n	M F and T	5	Clergy'm'n
Gentlem'n		644	Mills, Edmund	e hf n hf 12	r 1 s	M F and O	6	Farmer
Miller		638	Marshman, Sam	n hf 7 and o p	r 1 s	M F and T	5	Farmer
Laborer		646	Marshman, Geo B	n hf 7 and o p	r 1 s	M F and T	5	Farmer
Carpent'r		1322	McNulty, Thos	5 and 6 Melb	r 1 s	M F and O	5	Merchant
Farmer		748	McRoberts, John sr	n hf 5	1	M F and O	12	Farmer
Farmer		750	McRoberts, James	n hf 4	1	M F and O	12	Farmer
V S		749	McRoberts, John jr	n hf 5	1	M F and O	12	Farmer
Underta'er		751	McCracken, Henry	e hf of s hf 2	1	M F and O	5	Farmer
Barber		743	McCracken, Samuel	n hf 7 and o p	1	M F and O	12	Farmer
M D		745	McCracken, Ernest	n hf 7 and o p	1	M F & F S	12	Farmer
Gentlem'n		744	McCracken, Robert	n hf 7 and o p	1	M F & F S	12	Farmer
		760	McNeil, Malcolm	pt s hf 1	r 1 s	M F and O	5	Farmer

W Little Jas 17.18 Mel 7112 21743 5 

Polling Sub-Division No. 2.

No. on Roll.	NAME.	LOT.	Concession of Street.	Other Description.	P.O.	Occupation.
761	McNeil, John A . . . pt s hf 1	r 1 s		M F and O .	5 .	Farmer
759	McClurg, George . s w pt s hf 7	r 1 s		M F and O .	6 .	Farmer
771	McCracken, Thos F . n hf 9	r 1 n		M F & F S .	6 .	Farmer
758	McKellar, Arch . . . e hf s hf 8	r 1 s		M F and T .	6 .	Farmer
792	Near, Wilson n hf 4	r 1 n		M F and O .	5 .	Farmer
798	Nagle, Jos J s hf 4 and o p	r 1 s		M F & F S .	5 .	Farmer
799	Nagle, Thos E . . . w hf s hf 7	r 1 n		M F and O .	5 .	Farmer
1324	Nichols, Rich . . . l and 2, Melb	r 1 n		M F and T .	5 .	Merchant
1327	Parr, Jno T pt Mill prop	r 1 n		M F and O .	5 .	Laborer
1326	Petch, Isaac sub 9, Melb	r 1 n		M F and O .	5 .	Shoem'k'r
785	Prentice, Charles . pt s hf 3	1		M F and O .	5 .	Farmer
	<i>Philippas Jas lot 1</i>		<i>7210</i>	<i>91140 5</i>	<i>5</i>	<i>Call</i>
926	Richards, Geo jr . . e pt n hf 4	r 1 s		M F and O .	5 .	Farmer
927	Richards, Wilson . w pt 3, pt s hf 1	r 1 s		M F and O .	5 .	Farmer
928	Richards, Geo sr . n hf 5, e pt 3	r 1 s, r 1 n .		M F and O .	5 .	Farmer
929	Richards, James . n hf 5, e pt 3	r 1 s, r 1 n .		M F & F S .	5 .	Farmer
1329	Richards, Edmund . 26, 28 Melb	r 1 n		M F and O .	5 .	Merchant
930	Ridgway, Philip F . s hf 10	r 1 s		M F and O .	6 .	Farmer
1330	Robinson, John . . . 11 Melb	r 1 n		M F and O .	5 .	Farmer
1328	Robinson, Wm J . . 25, 26 Melb	r 1 n		M F and O .	5 .	Laborer
1027	Small, Andrew sr . s hf 7	1		M F and O .	1 .	Farmer
1028	Small, Robert . . . s hf 7	1		M F and O .	1 .	Farmer
1029	Small, Wm s hf 7	1		M F and O .	5 .	Farmer
1016	Small, James . . . w hf n hf 8	1		M F and T .	1 .	Farmer
1031	Sawyer, Wm E . . . pt s hf 11	1		M F and O .	1 .	Farmer

Jun. N
 1032
 1331
 102
 107
 10
 107
 113
 113
 113
 113
 110
 110
 117
 11
 134
 111
 135
 134
 13
 13
 11

11

Mr

PART II.—Persons Entitled to Vote at Municipal Elections ONLY.

Jur.	No. on Roll.	NAME.	LOT.	Concession or Street.	Other Description.	P.O.	Occupation.
	108	Bateman, Margaret.	n hf 12		r 1 n	Owner	6 Widow
	118	Bateman, Margaret.	w pt n hf 10 & o p		r 1 s	Owner	6 Widow
	613	Bateman, Margaret.	pt s hf 11		r 1 n	Owner	6 Widow
	1303	Conn, Ann	39 Melb		r 1 n	Owner	5 Widow
	243	Cooper, Eliza	s hf w hf 2 and o p		r 1	Owner	5 Widow
	266	Carruthers, Emma H.	w hf n qr 6		r 1 s	Owner	5 Spinster
	1317	Corneil, John M.	13 to 16, Melb		r 1 n	Owner	5 Farmer
	1304	Griffith, Mary J.	pt n hf 1		r 1 s	Owner	2 Widow
	615	Lucas, Alonzo	s cor s hf 11		r 1 n	Owner	15 Gentle'an
	603	Marshman, Catharine	n cor 2		r 1 n	Owner	5 Widow
	637	Marshman, Job	n hf 7		r 1 s	Owner	5 Farmer
	647	Mahler, Louis	w qr s hf 12		r 1 s	Owner	3 Farmer
	328	McCallum, Margaret	n cor 2		r 1 n		20 Spinster
	770	McCracken, Catharine	n pt 9		r 1 n	Owner	6 Widow
	1311	McClary, John	8 Melb		r 1 s	Owner	15 Gentle'an
	797	Nagle, Ann	s hf 4		r 1 s	Owner	5 Widow
	1332	Scudamore, Sarah	40, 41 and o p		r 1 n	Owner	3 Spinster

Jur. No.
R
1167

757

1293

127

1373

1374

1291

34

34

136

132

92

100

13

13

LY.

Occupation.

Widow

Widow

Widow

Widow

Widow

Spinster

Farmer

Widow

Gentle'an

Widow

Farmer

Farmer

Spinster

Widow

Gentle'an

Widow

Spinster

Jur.	No. on Roll	NAME.	LOT.	Concession or Street.	Other Description.	P.O.	Occupation.
	1167	Watson, Frances	w hf n hf 12	r 1 s	Owner	6.	Widow
	757	Williams, Wm E.	e hf n hf 8	r 1 s	Owner	6.	Farmer

PART III.—Persons Entitled to Vote at Elections to the Legislative Assembly ONLY.

		<i>W Bidnall Mrs</i>	<i>M E 1/2 N 1/2 6</i>		<i>M 7</i>	<i>1</i>		<i>ALL</i>
	1293	Berdan, George	.70	r 1 n	M F	5.	Laborer	
	122	Bass, Wm	s hf 3	r 1 n	M F	5.	Laborer	
	1373	Biggar, Ernest	8	r 1 s	M F	6.	Laborer	
	1374	Bateman, Geo	12	r 1 s	M F	6.	Laborer	
		<i>W Baladen Mrs</i>	<i>Reserve</i>		<i>M 7</i>	<i>4</i>		<i>ALL</i>
		<i>W Baladen Geo</i>	<i>"</i>		<i>M 7</i>	<i>4</i>		<i>ALL</i>
	1297	Cherrington, George	pt n hf 1	r 1 s	M F	5.	Wat'man	
		<i>W Collins Thos</i>	<i>10</i>	<i>R 19</i>	<i>M 7</i>	<i>6</i>		<i>ALL</i>
		<i>M Clarke Sam</i>	<i>Reserve</i>		<i>M 7</i>	<i>27</i>		<i>ALL</i>
	341	Evison, Geo	n hf 12	l	M F	1.	Farmer	
	342	Evison, Oliver	n hf 10	l	M F	1.	Farmer	
	1365	Evison, Alden	10	l	M F	6.	Farmer	
		<i>W Irwin Alex.</i>	<i>Reserve</i>		<i>M 7</i>	<i>5</i>		<i>ALL</i>
		<i>W Song Marvin</i>	<i>13 Mel</i>	<i>R 19</i>	<i>M 7</i>	<i>5</i>		<i>ALL</i>
	1295	Phelps, Jas	pt 1	r 1 s	M F	5.	Drover	
		<i>W Grote Mrs</i>	<i>Reserve</i>		<i>M 7</i>	<i>5</i>		<i>ALL</i>
		<i>W Nevills Ezekiel</i>	<i>Reserve</i>		<i>M 7</i>	<i>27</i>		<i>ALL</i>
	925	Reid, Geo	s hf 8	r 1 n	M F	6.	Farmer	
		<i>W Fowler Philip</i>	<i>Reserve</i>		<i>M 7</i>	<i>14</i>		<i>ALL</i>
		<i>W Cady Elias</i>	<i>Reserve</i>		<i>M 7</i>	<i>5</i>		<i>ALL</i>
		<i>W Dodge Levi</i>	<i>Reserve</i>		<i>M 7</i>	<i>5</i>		<i>ALL</i>
	1005	Shires, Walter	pt n hf 1	r 1 s	M F	5.	Farmer	
		<i>W Johnson Marit</i>	<i>mel</i>		<i>M 7</i>	<i>5</i>		<i>ALL</i>
		<i>W McDougall Angus</i>	<i>Reserve</i>		<i>M 7</i>	<i>5</i>		<i>ALL</i>
	1333	Towers, Lewis	pt 1	r 1 n	M F	5.	Sec For'n	
	1337	Tolson, Wm E.	pt Mill prop	r 1 n	M F	5.	Miller	
		<i>W Robinson Bunley</i>	<i>11 Melty</i>	<i>R 19</i>	<i>M 7</i>	<i>5</i>		<i>ALL</i>
		<i>W Williamson Mrs</i>	<i>9 Cor Mel Prop</i>	<i>R 19</i>	<i>M 7</i>	<i>5</i>		<i>ALL</i>
		<i>W Van Kleik Jacob</i>	<i>mel</i>	<i>R 19</i>	<i>M 7</i>	<i>5</i>		<i>ALL</i>
		<i>W Millie Willard</i>	<i>Reserve</i>		<i>M 7</i>	<i>5</i>		<i>ALL</i>

Polling Sub-Division No. 3,

Comprising all that portion of the Township lying in the 1st, 2nd, and South half of
the 3rd Con., East of the Side Road between Lots 12 and 13.

Polling Station at Town Hall, Mt. Brydges.

PART I.—Persons Entitled to Vote at BOTH Municipal Elections and Elections to the Legislative Assembly.

Jur.	No. on Roll.	NAME.	LOT.	Concession or Street.	Other Description.	P.O.	Occupation.
	1191	Abray, George	w Ad st, 9	3 Mt Bgs.	M F and O.	1	Carpent'r
J 23		Arnold, Edward	n hf 18	1	M F and T.	1	Farmer
	1204	Bancroft, Wm G.	3, 4 and 5, e Emer st.	3 Mt Bgs.	M F and O.	1	Labbrer
	99	Bancroft, Thos.	pt w hf n hf 20	2	M F and O.	1	Laborer
	100	Bancroft, Wm.	pt w hf n hf 20	2	M F and T.	1	Laborer
	113	Brown, Wm.	e cor s hf 21	1	M F and O.	3	Farmer
J110		Borley, E C.	s hf 18	1 & r 1 n	M F and F.	1	Farmer
J111		Borley, H D.	s hf 18	1 & r 1 n	M F and F.	1	Farmer
	1192	Brownson, Sam C.	27 to 31 and o p	2 Mt Bgs.	M F and O.	1	Shoema'r
	1193	Broom, Thomas.	313 to 319 and o p	2 Mt Bgs.	M F and O.	1	Farmer
	1194	Baker, Thomas.	w Ad st, 18	2 Mt Bgs.	M F and O.	1	Vet, Sur
J1195		Bignall, George.	blk E, 17 and 18	2 Mt Bgs.	M F and O.	1	Publican
	1198	Bartlett, Henry A.	blk C, 1, 17, pt 2	2 Mt Bgs.	M F and O.	1	Gentle'an
J1222		Betts, John	blk C, 16, pt 15	2 Mt Bgs.	M F and O.	1	Merchant
J1200		Bice, Mark	blk I, 16	2 Mt Bgs.	M F and O.	1	M D
	98	Bidnall, Wm	pt e hf n hf 16	2	M F and O.	1	Carpent'r
J1205		Bond, Stephen	6, 7, 8 and o p	2 Mt Bgs.	M F and O.	1	Gentle'an

No. on Roll.	NAME.	LOT.	Concession or Street.	Other Description.	P.O.	Occupation.
J 58	Ball, Thomas	s hf n hf 16	8	M F and F	1	Farmer
1201	Bateman, Charles	blk C, 13, 14	2 Mt Bgs	M F and O	1	Gentlem'n
J1202	Badge, Humphrey	blk K, 16 & o p	2 Mt Bgs	M F and O	1	Underta'er
85	Badge, George	pt 18 and o p	3	M F and O	1	Farmer
1196	Bond, John	blk C, 8, 9, 10	2 Mt Bgs	M F and O	1	Gentlem'n
J101	Burch, Wm J	w hf s hf 14	2	M F and O	1	Farmer
112	Brown, John	w pt s hf 20	1	M F and O	1	Farmer
1358	Bowman, Martin	pt 23 and 24	1	M F and T	10	Farmer
J230	Clark, Pearson	pt s hf 21	2	M F and O	1	Farmer
231	Clark, James P	e pt 22	2	M F and O	1	Farmer
255	Coy, John	w hf s hf 20 and o p	1	M F and O	1	Farmer
256	Coy, James	n hf s hf 20 and o p	1	M F & F S	1	Farmer
J233	Cullen, Michael	e pt 16	2	M F and O	1	Farmer
J232	Cartner, Robt	w ht s hf 19	2	M F and O	1	Farmer
J251	Cobbald, James R	w hf s hf 17	2	M F and O	1	Farmer
252	Cobbald, Wm J	w hf s hf 17	2	M F & F S	1	Farmer
1211	Crozier, John B	blk H, pt 18 and o p	2 Mt Bgs	M F and O	1	Gentle'an
1212	Crozier, Charles	blk H, pt 18 and o p	2 Mt Bgs	M F and O	3	Agent
1207	Cullen, John	e Ad st, 9 to 14	2 Mt Bgs	M F and O	1	Gentle'an
1208	Clark, John	blk E, pt 1 & 2 & o p	2 Mt Bgs	M F and O	1	Merchant
J253	Corcoran, Dennis	pt u hf 21 and 22	1	M F and T	1	Farmer
J228	Coates, Furlow	w hf s hf 19	3	M F and O	1	Farmer
J234	Crozier, Geo B	w hf n hf 13	1	M F and O	1	Farmer
J229	Chamberlain, Wm	s hf 23	3	M F and O	1	Farmer
1210	Cobban, John	217 and o p	2 Mt Bgs	M F and O	1	Farmer
142	Cox, C E	n hf 13	2	M F and T	1	Farmer
J1358	Campbell, Alex	e pt 23 and 24	1	M F and T	10	Farmer

bl Clark & sub 243 24/13 977401

th half of

Elections

Occupation.

Carpent'r

Farmer

Laborer

Laborer

Laborer

Farmer

Farmer

Farmer

Shoema'r

Farmer

Vet, Sur

Publican

Gentle'an

Merchant

M D

Carpent'r

Gentle'an

Jur.	No. on Roll.	NAME.	LOT.	Concession or Street.	Other Description.	P.O.	Occupation.
	324	Dunn, Wm sr	pt 24	2	M F and O.	10.	Farmer
	325	Dunn, Edwin	pt 24	2	M F and O.	10.	Farmer
	1214	Dingman, Wellington G	part reserve	3 Mt Bgs.	M F and O.	1.	Farmer
	1213	Dingman, Chas	w Ad st, 5	3 Mt Bgs.	M F and O.	1.	Carpenter
	1215	Elsey, James	blk H, pt 14, 15, 16.	2 Mt Bgs.	M F and O.	1.	Har Mak
	1216	Francis, Wm	pt s hf 17 and o p	3	M F and O.	1.	Tp Treas
	1217	Fisher, Benj W	pk lots 1 and 2 & o p	2 Mt Bgs.	M F and O.	5.	Gentle'an
	1430	Graves, Angus	cen pt n hf 22	2	M F and O.	1.	Farmer
	11225	Gillam, Hiram	pt s hf 18 and o p	2 Mt Bgs.	M F and O.	1.	Farmer
	1221	Geddes, Wm	Ad st 7, w E st 8	3 Mt Bgs.	M F and O.	1.	Gentlem'n
	1223	Graham, Angus	blk C, 16, pt 15	2 Mt Bgs.	M F and T.	1.	Publican
	1224	Graham, Alex	blk C, 16, pt 15	2 Mt Bgs.	M F and T.	1.	Publican
	1227	Holmes, Rev J E	100 and 101	2 Mt Bgs.	M F and T.	1.	Clergym'n
	1497	Heath, Robert	n hf n hf 21	2	M F and O.	1.	Farmer
	1229	Henderson, Ed	blk I, 1	2 Mt Bgs.	M F and T.	1.	Tinsmith
	1509	Heath, Francis	cen pt 21	1	M F and O.	1.	Farmer
	11228	Hadden, Jos	e pt n hf 18	2	M F and O.	1.	Sec For'n
	499	Hartley, George	pt e hf 22	2	M F and O.	1.	Farmer
	1226	Humphreys, Alex	175, 176, 177, 178	2 Mt Bgs.	M F and O.	1.	Farmer
	1503	Hoover, Jos E	n hf 16	1	M F and O.	1.	Farmer
	1505	Hoover, Benj C	e hf n hf 13	1	M F and T.	1.	Farmer
	502	Healy, Jas	pt n hf 19	1	M F and T.	1.	Farmer
	1535	Innes, Hugh	e hf 22	1	M F and O.	3.	Farmer

Occupation.	Jur. No. on Roll.	NAME.	LOT.	Concession or Street.	Other Description.	P.O.	Occupation.
Farmer	1230	Kellestine, Andrew sr.	1 to 6 & 63 to 75	2 Mt Bgs.	M F and O.	1.	Garden'r
Farmer	1231	Kellestine, Andrew jr.	1 to 6 & 63 to 75	2 Mt Bgs.	M F and O.	1.	Garden'r
Farmer	1235	Kinch, Peter	blk K, 10	2 Mt Bgs.	M F and O.	1.	Laborer
Carpenter	1233	Kennedy, Thos.	blk G, 18	2 Mt Bgs.	M F and T.	1.	Laborer
Har Mak	562	Kilbourn, Benj.	s hf 13	1	M F and T.	6.	Farmer
592	Lipsit, Jasper	n cor n hf 16	2	M F and O.	1.	Mason	
596	Lowthian, Geo.	s hf 14	1	M F and O.	6.	Farmer	
Gentle'an	1237	Lee, Elijah	181, 182, 183, 184	2 Mt Bgs.	M F and O.	1.	Carpent'r
Farmer	1238	London, Franklin F.	206 to 212 & o p.	2 Mt Bgs.	M F and O.	1.	Millwrit
Farmer	1241	Lipsit, Bannon	blk B, 1, pt 2	2 Mt Bgs.	M F and O.	1.	Blaeks'th
Gentlem'n	594	Lipsit, Levi	e hf s hf 19	3	M F and O.	1.	Farmer
Publican	591	Lindsay, Geo H.	s hf 16	3	M F and O.	1.	Farmer
Publican	1239	Lidgett, Chas	205	2 Mt Bgs.	M F and T.	1.	Gentle'an
1243	Lipsitt, Geo A.	e Ad st, 19, 20	3 Mt Bgs.	M F and T.	1.	Mason	
Clergym'n	1245	Lockwood, C H.	Wad st, 15	3 Mt Bgs.	M F and O.	1.	Tp Clerk
Farmer	593	Luce, Alfred	w hf s hf 22	3	M F and O.	1.	Farmer
Tinsmith	566	Monteith, Wm.	w hf 23	2	M F and O.	1.	Farmer
Farmer	1247	Malcolm, Wallace	e Ad st, 15 & 16 & o p.	3 Mt Bgs.	M F and O.	1.	Sawyer
Sec For'n	1248	Mitchell, Neil	w Ad st, 16	3	M F and T.	1.	Carpent'r
Farmer	1249	Mitchell, Jos H.	blk B, 3	2	M F and T.	1.	Tailor
Farmer	640	Marsh, Wm	pt 17 and 18	1	M F and T.	1.	Farmer
Farmer	140	McCallum, Chas.	n hf 13	2	M F and O.	1.	Farmer
Farmer	141	McCallum, Justus.	n hf 13	2	M F & F S.	1.	Farmer
Farmer	739	McMullen, Geo.	w hf n hf 20	1	M F and O.	1.	Farmer
Farmer	1204	McGugan, Malcolm	pt 17 and 18	2	M F and O.	1.	M P

W Meacock fuel pt 18 2 M 74 3 1
W Whires Fred pt 18 3 M 74 7 0 1

ALL
ALL

Polling Sub-Division No. 3.

Jun.	No. on Roll.	NAME.	LOT.	Concession or Street.	Other Description.	P.O.	Occupation.
	7789	Nagle, Henry	n hf 14	2	M F and O.	1.	Farmer
	1251	Northcott, Ed H.	55, 56 and o p	2	Mt Bgs	M F and O.	1. Farmer
	791	Nevills, James	s hf 17	2	M F and T.	1.	Farmer
	752	Nagle, Wm	155, 156, 157	2	Mt Bgs	M F and O.	1. Farmer
		<i>W Nevills Gas</i>	<i>5 1/2 17</i>	<i>2</i>	<i>M 7970 1</i>		<i>W H</i>
	809	Owens, Thos	n w qr n hf 16	2	M F and O.	1.	Farmer
	808	Obrine, John	e hf s hf 15	2	M F and O.	1.	Farmer
	872	Parrott, Edward	w pt s hf 16	2	M F and O.	1.	Farmer
	1252	Porter, Wm	132 to 146 and o p	2	Mt Bgs	M F and T.	1. Farmer
	1253	Porter, James	119, 120, 121	2	Mt Bgs	M F and O.	1. Farmer
	876	Pulling, Charles	w hf s hf 15	1	M F and O.	1.	Farmer
	1254	Pilkey, Rev J C.	pt n hf 18	2	M F and T.	1.	Clergy'an
	912	Ramsay, Peter	w hf n hf 17	1	M F and O.	1.	Farmer
	561	Robinson, Jos	s hf 13	1	M F and O.	1.	Conveyancer
	1259	Robertson, Wm C.	blk 1, 13, 14, 15	2	Mt Bgs	M F and O.	1. L. Inspe'r
	920	Runnalls, Rich	n hf 14	1	M F and O.	1.	Farmer
	921	Runnalls, John	n hf 14	1	M F & F S.	1.	Farmer
	1256	Ringrose, Chas	blk H, 17	2	Mt Bgs	M F and T.	1. Merchant
	1255	Root, Abner	blk G, 18	2	Mt Bgs	M F and O.	1. Laborer
	1023	Stover, Geo	w hf s hf 13	2	M F & F S.	1.	Farmer
	1021	Stover, Peter	w hf s hf 13	2	M F and O.	1.	Farmer
	1022	Stover, Jos	w hf s hf 13	2	M F & F S.	1.	Farmer
	1015	Smith, Francis sr.	e hf s hf 13	2	M F and O.	1.	Farmer
	1265	Simpson, Geo	blk E, 15 and 16	2	Mt Bgs	M F and O.	1. Lum Mer

Polling Sub-Division No. 3.

Occupation.	Jur. No. on Roll.	NAME.	LOT.	Concession or Street.	Other Description.	P.O.	Occupation.
Farmer	976	Snelgrove, Orva	blk C, pt 18	2 Mt Bgs.	M F and T.	1.	Barber
Farmer	1268	Small, David	pt n hf 18 and o p.	2	M F and O.	1.	Farmer
Farmer	1008	Steer, Chas	s hf 13	3	M F & F S.	1.	Farmer
Farmer	1007	Steer, Robt	s hf 13	3	M F & F S.	1.	Farmer
Farmer	11266	Simpson, John W.	blk D, 1 and o p.	2 Mt Bgs.	M F and O.	1.	Lum Mer
Farmer	11013	Steer, Richard	w hf s hf 14	3	M F and O.	1.	Farmer
Farmer	11014	Sutherland, Robert.	s hf 15	3	M F and O.	1	Farmer
Farmer	1018	Steer, John	e hf n hf 17	1	M F and T.	1.	Farmer
Farmer	1019	Steer, Henry G	e hf n hf 17	1	M F & F S.	1	Farmer
Farmer	1020	Steer, Edward J.	e hf n hf 17	1	M F & F S.	1.	Farmer
Farmer	11033	Stiltz, Chas	e hf s hf 17	1	M F and O.	1.	Farmer
Farmer	1260	Snelgrove, Robt	blk H, pt 14, 15	2	M F and O.	1	Painter
Farmer	1261	Snelgrove, Jos.	blk H, pt 14, 15	2	M F and T.	1.	Laborer
Clergy'an	1262	Smith, Donald	blk F, 1, 2, 3.	2	M F and T.	1.	M D
Farmer	11065	Tilden, Geo B.	s pt 23	2	M F and O.	1.	Pumpn'r
Conveyancer	11063	Tilden, Chas N D.	n pt 23	2	M F and O.	1.	Sawyer
L Insp'e'r	1064	Tilden, Stephen	n pt 23	2	M F & F S.	1.	Farmer
Farmer	11061	Thomas, David.	s hf 21	3	M F and O.	1.	Farmer
Farmer	11060	Thomas, W A	s pt n hf 21	2	M F and O.	1.	Farmer
Merchant	1272	Thomas, Win	131 to 145	2 Mt Bgs.	M F and O.	1.	Farmer
Laborer	11082	Tull, Robt M.	s hf 16 and o p	1	M F and T.	1.	Farmer
Farmer	11067	Tull, Rich S	n hf 15	1	M F and O.	1.	Farmer
Farmer	11066	Toles, Francis	pt n hf 19	1	M F and O.	1.	Farmer
Farmer	11269	Taggart, Thos	167 and o p	2 Mt Bgs.	M F and O.	1.	Mason
Farmer	11062	Thomas, Albert E	w hf n hf 20	2	M F and O.	1.	Farmer
Farmer	11083	Tull, Thomas H	s hf 13 and o p	1	M F and T.	1.	Farmer

Polling Sub-Division No. 3.

Jur.	No. on Roll.	NAME.	LOT.	Concession or Street.	Other Description.	P.O.	Occupation.
	J1084	Tull, Harry C	s hf 13 and o p	1		M F and T..	1 Farmer
	1270	Trott, Win A	108 and o p	2	Mt Bgs.	M F and O..	1 Drover
	1274	Torrance, Jas W.	blk K, 1 and 2	2	Mt Bgs.	M F and T..	1 Butcher
	1275	Torrance, W ^W	blk K, 1 and 2	2	Mt Bgs.	M F and T..	1 Teacher <i>W</i>
	1276	Torrance, A E.	blk K, 1 and 2	2	Mt Bgs.	M F and T..	1 Butcher
	1271	Trott, John	107, 171, 172	2	Mt Bgs.	M F and T..	1 Drover
	1278	Thompson, Lorenzo	blk A, 1	2	Mt Bgs.	M F and T..	1 Agent
	1281	Veale, Richard	168	2	Mt Bgs.	M F and T..	1 Farmer
		<i>Vannalier</i> <i>dra E 177 blk E</i>		<i>2 Mt Bgs.</i>	<i>M F and T..</i>	<i>1</i>	<i>all</i>
	1289	Wadsworth, Thos.	pk 3, 5, 6, and o p	3		M F and O..	1 Farmer
	1290	Wadsworth, Geo	pk 3, 5, 6, and o p	3		M F and T..	1 Farmer
	J1146	Waters, Francis	pt n hf 22 and o p	2		M F and O..	1 Farmer
	J1157	Waters, Edward	e hf n hf 20	1		M F and T..	1 Farmer
	1158	Waters, Stephen	e hf n hf 20	1		M F and T..	1 Farmer
	J1159	Williams, Rich A.	e hf s hf 15	1		M F and O..	6 Farmer
	J1154	Wilson, Jos T	w pt s hf 22	2		M F and O..	1 Farmer
	J1147	Weekes, Thos	s hf 20	3		M F and O..	1 Farmer
	1163	Walker, George	e hf s hf 19	2		M F and O..	1 Farmer
	J1164	Walker, Alfred F.	e hf s hf 19	2		M F and O..	1 Farmer
	1156	Waters, Cornelius	e hf n hf 20	1		M F and O..	1 Farmer
	J1165	Waters, Arthur	w hf 22	1		M F and O..	3 Farmer
	1287	Wilkinson, James	179, 180	2	Mt Bgs.	M F and O..	1 Agent
	1288	Wilkinson, Thos A.	179, 180	2	Mt Bgs.	M F and O..	1 Laborer
	1284	Wootton, Richard	blk F, 18 and o p	2	Mt Bgs.	M F and O..	1 Merchant
	1285	West, Thomas	blk F, pt 1, 2, 3	2	Mt Bgs.	M F and O..	1 Blacks'ith
	J1150	Walker, William	s hf 24	3		M F and O..	1 Farmer
	J1151	Walker, John H.	s hf 24	3		M F and O..	1 Farmer

Jur.	No. on Roll	NAME.	LOT.	Concession or Street.	Other Description.	P.O.	Occupation.
	1286	Waters, Wm	163 and 164	2 Mt Bgs.	M F and O	1.	Farmer

PART II.—Persons Entitled to Vote at Municipal Elections ONLY.

	1245	Clay, Henry	blk B, 3, pt 2	2 Mt Bgs.	Owner	15	Publican
	22	Curry, John	n hf 18	1	Owner	16.	Barrister
	1209	Crooks, Margaret	23, 24, and o p	2 Mt Bgs.	Owner	1.	Widow
	501	Cade, Sarah	pt n hf 19	1	Owner	1.	Widow
	260	Coreoran, Maria	s hf 20	2	Tenant	1.	Spinster
	504	Dawson, Viekers	c hf n hf 13	1	Owner	22.	Gentle'an
	1277	Fisher, Lucinda	blk A, 1	2 Mt Bgs.	Owner	1.	Widow
	1219	Gibson, Hannah	w Ad st, 10 to 14 & o p	3 Mt Bgs.	Owner	1	Widow
	1220	Gibson, Amelia	w Ad st, 10 to 14 & o p	3 Mt Bgs.	Owner	1	Spinster
	1218	Gustin, Sarah J.	pt s hf 17	2	Owner	1.	Widow
	1232	Hadden, Wm	blk G, 18	2 Mt Bgs.	Owner	25.	Laborer
	543	Janes, Borley	23 and 24	1	Owner	10	Farmer
	1236	Kineh, Robt	w pt n hf 17	2	Owner	29.	Laborer
	1234	Kellock, Agnes	blk E, 12	2 Mt Bgs.	Owner	1.	Widow
	223	Lindsay, H G	s hf 20	2	Executor	2.	Banker
	1242	Lipsit, Jane	e Ad st 17	3	Owner	1	Widow

Polling Sub-Division No. 3.

Jur. No. on Roll.	NAME.	LOT.	Concession or Street.	Other Description.	P.O.	Occupation.
1152	Lewis, Eugene	corner 24	2	Owner	15	Laborer
1240	Loyd, Fergus	pt n hf 18	2	Owner	15	Carpenter
790	Neville, Pamela	s hf 17	2	Owner	15	Widow
1257	Nicholson, Henry	pt n hf 17 and o p	2	Owner	2	Agent
1246	Mines, Margaret	pt s hf 18 and o p	3	Owner	15	Widow
1244	Patrick, Wm	...e Ad st, 20, 21, 22	3	Owner	15	...
871	Parfitt, Albion	...23 and 24	1	Owner	15	Gentlem'n
1273	Pearee, Thos	...blk K, 1 and 2	2 Mt Bgs	Owner	15	Agent
1006	Steer, Emily	...s hf 13	3	Owner	15	Widow
1267	Sutherland, Annie	blk C, pt 1 and 2	2 Mt Bgs	Owner	15	Widow
1081	Tall, Mary J	...s hf 16	1	Owner	15	Widow
1161	Webb, Arabella	...pt s hf 20	1	Owner	15	Widow

PART III.—Persons Entitled to Vote at Elections to the Legislative Assembly ONLY.

<i>W</i>	<i>Arnold Walter #17</i>	<i>con 3</i>	<i>#17</i>	<i>1</i>	<i>CHL</i>
	1206 Baxter, Geo D	pt 18	2 Mt Bgs	M F	1...Sta Ag
	1203 Bancroft, John	pt 18	2 Mt Bgs	M F	1...Laborer
	1497 Bond, Ed J	...s, 9 and 10	2 Mt Bgs	M F	1...Laborer
<i>W</i>	<i>Bancroft John #17</i>		<i>3</i>	<i>#17</i>	<i>1</i>
<i>W</i>	<i>Davistta sub 172</i>		<i>2 #173</i>	<i>#17</i>	<i>1</i>
	498 Heath, Thomas	...n hf n hf 21	2	M F	1...Farmer
<i>W</i>	<i>Robertson Geo A 1314 #173</i>		<i>2</i>	<i>#17</i>	<i>1</i>
<i>W</i>	<i>Robinson Geo A 1218</i>		<i>3</i>	<i>#17</i>	<i>1</i>
<i>W</i>	<i>Pilkey Cecil #18 #173</i>		<i>2</i>	<i>#17</i>	<i>1</i>
<i>W</i>	<i>Jarvis John #19</i>		<i>3</i>	<i>#17</i>	<i>1</i>

Polling Sub-Division No. 3.

P.O. Occupation.
 1. Laborer
 15. Carpenter
 1. Widow
 2. Agent
 1. Widow
 1.
 15. Gentlem'n
 15. Agent
 1. Widow
 1. Widow
 1. Widow
 1. Widow
 1. Widow
 1. Widow
 1. Sta Ag
 1. Laborer
 1. Laborer
 1. Farmer
 1.
 1.
 1.

Par. No. on Roll.	NAME.	LOT.	Concession or Street.	Other Description.	P.O.	Occupation.
1264	Smith, Walter....pt 17	3		M F.....	1.	Laborer
1263	Snelgrove, Arthur..blk H, 14 and 15	2		M F.....	1.	Laborer
1371	Smith, Harry21	1		M F.....	3.	Laborer
	<i>W Kinder Frank 13</i>		<i>1</i>	<i>M F</i>	<i>1</i>	<i>CALL</i>
1280	Vrooman, James. blk B, 6	2	Mt Bgs.	M F.....	1.	Laborer
1282	Vennor, Solomon. pt n hf 18	2		M F.....	1.	Farmer
1283	Vennor, Wmpt n hf 18	2		M F.....	1.	Farmer
	<i>W Vandusen Ernest 11</i>		<i>3 Mt Bgs</i>	<i>M F</i>	<i>1</i>	<i>CALL</i>
	1153 Weekes, James ...23 and 24	1		M F.....	1.	Laborer
1148	Waters, John sr ...s hf 23	3		M F.....	1.	Laborer
1149	Waters, John jr. s hf 20	3		M F.....	1.	Laborer
	<i>W Wigley Ed. 16</i>	<i>1</i>		<i>M F</i>	<i>1</i>	<i>CALL</i>
	<i>W Monger Oliver pt 18</i>	<i>2</i>		<i>M F</i>	<i>1</i>	<i>CALL</i>
	<i>W Minis Fred pt 18</i>	<i>1</i>				
	<i>W Nevills Jas pt 17</i>	<i>2</i>		<i>M F</i>	<i>1</i>	<i>CALL</i>

islativ
 1. *CALL*
 1. Laborer
 1. Laborer
 1. Farmer
 1.
 1.
 1.

Polling Sub-Division No. 4,

Comprising all that portion of the Township lying in the 2nd, 3rd, 4th, 5th, and 6th Cons., West of the Side Road between Lots 12 and 13.

Polling Station at School House, School Section No. 12.

PART I.—Persons Entitled to Vote at BOTH Municipal Elections and Elections to the Legislative Assembly.

jur.	No. on Roll.	NAME.	LOT.	Concession or Street.	Other Description.	P.O.	Occupation.
J	9	Anstey, Rupert	n hf 3	5	M F and T.	7.	Farmer
	19	Augerman, John	s hf 6	3	M F and O.	12.	Farmer
	20	Augerman, Chas.	s hf 6	3	M F & F S.	12.	Farmer
	21	Augerman, Wm.	s hf 6	3	M F & F S.	12.	Farmer
J	55	Blair, Wm	n hf 9	6	M F and T.	2.	Farmer
J	56	Blair, Geo D.	n hf 9	6	M F and T.	2.	Farmer
J	58	Bairns, Thos	n hf 4	6	M F and O.	7.	Farmer
	61	Ballantine, Geo	n hf 10	5	M F and O.	2.	Farmer
J	93	Brown, Lionel	w hf s hf 4	3	M F and T.	12.	Farmer
	95	Bowley, Henry	w hf s hf 10	3	M F and O.	1.	Farmer
J	86	Branton, Alfred	e hf s hf 4	3	M F and O.	12.	Farmer
	94	Bass, Albert	n hf 2	3	M F and T.	12.	Farmer
J	105	Bateman, Samuel	w hf s hf 5	2	M F and O.	12.	Agent
	103	Beattie, James	s hf 6, pt n hf 6	2	M F and O.	12.	Farmer
J	104	Beattie, Patten	s hf 6, pt n hf 6	2	M F and O.	12.	Farmer
J	97	Bowley, George	e hf s hf 10	3	M F and T.	1.	Farmer
J	92	Bolton, Richard	w hf s hf 4	3	M F and O.	12.	Farmer
J	102	Beattie, James J.	w pt s hf 10	2	M F and O.	1.	Farmer

Jur.	No. on Roll.	NAME	LOT.	Concession or Street.	Other Description.	P.O.	Occupation.
J220		Connor, James n hf 5	4		M F and O . .	7	Farmer
221		Connor, Wm J n hf 5	4		M F & F S . .	7	Farmer
J196		Campbell, Dugald . . n hf 12	5		M F and O . .	21	Farmer
216		Coleman, James n w pt s hf 12	4		M F and O . .	1	Merchant
J224		Cushman, James e hf s hf 3	3		M F and O . .	12	Farmer
225		Cushman, Hiram e hf s hf 3	3		M F & F S . .	12	Farmer
226		Cushman, Geo e hf s hf 3	3		M F & F S . .	12	Farmer
227		Cushman, Peter e hf s hf 3	3		M F & F S . .	12	Farmer
J239		Carruthers, John e hf s hf 9	2		M F and O . .	1	Farmer
J223		Cobban, Daniel s hf 3, w hf s hf 5	4		M F and O . .	12	Farmer
J218		Cobban, James n hf 3	4		M F and O . .	7	Farmer
219		Cobban, Wm J n hf 3	4		M F & F S . .	7	Farmer
J240		Cawthrope, Ernest . . s hf 2	2		M F and O . .	12	Farmer
J236		Clark, James s e pt 10	2		M F and O . .	1	Farmer
J527		Case, Peter w hf s hf 3	3		M F and O . .	12	Blacks'ith
217		Chisholm, Hugh B . . e hf s hf 2	5		M F and O . .	7	Farmer
323		Dillon, Thos n hf 1	3		M F and O . .	12	Farmer
J338		Edwards, William . . s hf 12	5		M F and T . .	1	Farmer
J339		Edwards, Wm H s hf 12	5		M F & F S . .	1	Farmer
340		Edwards, John s hf 12	5		M F & F S . .	1	Farmer
354		Ferguson, Samuel . . e pt n hf 11	6		M F and O . .	2	Farmer
J355		Ferguson, John e pt n hf 11	6		M F and T . .	2	Farmer
J356		Fisher, John s hf 8, w hf n hf 8	6		M F and O . .	7	Farmer
J357		Fisher, Benjamin . . n w pt 8	5		M F and O . .	7	Farmer

Jur.	No. on Roll.	NAME.	LOT.	Concession or Street.	Other Description.	P.O.	Occupation.
J366		Farrow, Wm	w hf 9 and o p	5	M F and T.	2.	Farmer
J367		Francis, Robt H.	w hf s hf 11	3	M F and O.	1.	Farmer
		368 Francis, Henry	w hf s hf 11	3	M F & F S.	1.	Farmer
J365		Farrow, Isaac	e qr n hf 9	4	M F and O.	2.	Farmer
J360		Farrow, John	w $\frac{3}{4}$ n hf 9	4	M F and O.	2.	Farmer
		427 Grigg, Wm	pt n hf 12 and o p	2	M F and O.	1.	Farmer
		428 Grigg, Elias G.	pt n hf 12 and o p	2	M F & F S.	1.	Farmer
J429		Grigg, Wm H.	e hf s hf 11	3	M F and O.	1.	Farmer
J426		Graves, Hanson	n hf 6	3	M F and T.	12.	Farmer
J416		Grigg, Frank	n pt n hf 10	2	M F and O.	1.	Farmer
		J461 Howe, Thomas	s hf 1	6	M F and O.	7.	Farmer
J466		Hixon, Levi J	s hf 6, s hf 4	5 and 6	M F and O.	7.	Farmer
		467 Hixon, Francis G.	s hf 6, s hf 4	5 and 6	M F & F S.	7.	Farmer
		468 Hixon, Edward J.	s hf 6, s hf 4	5 and 6	M F & F S.	7.	Farmer
		469 Hixon, Wilbur H.	s hf 6, s hf 4	5 and 6	M F & F S.	7.	Farmer
		470 Hixon, Ernest W.	s hf 6, s hf 4	5 and 6	M F & F S.	7.	Farmer
J471		Howe, George	n hf 5, w hf n hf 5	5 and 6	M F and O.	7.	Farmer
		472 Hutton, John W.	w hf s hf 9, e hf n hf 8	6	M F and T.	2.	Farmer
J484		Hutton, Jas L	e hf s hf 9, pt 10	5	M F and O.	2.	Farmer
J483		Hardy, Henry	s hf 7	5	M F and O.	2.	Auction'r
J477		Hixon, John	e hf s hf 5	5	M F and O.	7.	Farmer
J489		Harrison, Willoughby	e hf s hf 6	4	M F and O.	12.	Farmer
J488		Hutcheson, John	pt w hf n hf 8, pt 1	3 and 4	M F and O.	1.	Farmer
J479		Hutcheson, Geo.	e hf n hf 1, pt 6	4	M F and O.	7.	Farmer
J490		Harrison, Wesley A.	w hf s hf 6	4	M F and O.	12.	Farmer

Polling Sub-Division No. 4.

Jur.	No. on Roll.	NAME.	LOT.	Concession or Street	Other Description.	P.O.	Occupation.
	J492	Helmer, Daniel H.	e hf s hf 5	4	M F and T.	12.	Farmer
	494	Harrison, Wm	s hf 1	3	M F and T.	12.	Farmer
	J534	Inches, George	n hf 5	3	M F and O.	12.	Farmer
	533	Inches, John	w hf s hf 10	4	M F and O.	1.	Farmer
	J531	Inches, Thos	e hf s hf 10, pt 11	4	M F and O.	1.	Farmer
	J532	Inches, James	e hf s hf 10, pt 11	4	M F & F S.	1.	Farmer
		<i>W Inches Harry</i>	<i>10</i>	<i>4</i>	<i>8177701</i>		<i>ASL</i>
	556	Kellestine, Warren	w hf n hf 2	4	M F and O.	12	Farmer
	557	Kellestine, John B.	1 to 9, Midd	2	M F and O.	12	Farmer
	J588	Lazenby, Peter	w hf s hf 3	3	M F and T.	12.	Farmer
	J578	Long, Griffith	e hf s hf 9	6	M F and T.	2.	Farmer
	J581	Lollar, George	e pt s hf 2	5	M F and T.	7.	Farmer
	J595	Lambert, Cornelius	s hf 4	2	M F and O.	7.	Farmer
	J590	Lipsitt, Louis	e cor n hf 12	2	M F and T.	1.	Farmer
	633	Morrow, Thos	n hf 12	4	M F and T.	1.	Farmer
	J687	McArthur, Donald	n hf 10	6	M F and O.	2.	Farmer
	696	McDougall, Dunean sr.	s hf 10, s hf 11	6	M F and O.	2.	Farmer
	J697	McDougall, Arch.	s hf 10, s hf 11	6	M F & F S.	2.	Farmer
	J700	McDougall, Dunean jr.	s hf 10, s hf 11	6	M F & F S.	2.	Farmer
	J698	McDougall, Donald	s hf 10, s hf 11	6	M F & F S.	2.	Farmer
	J699	McDougall, Chas H.	s hf 10, s hf 11	6	M F & F S.	2.	Farmer
	J705	McDougall, Arch.	w hf s hf 12	6	M F and T.	2.	Farmer
	J702	McLean, Chas	n hf 11	5	M F and T.	2.	Farmer
	J703	McLean, John	n hf 11	5	M F and T.	2.	Farmer

Jur.	No. on Roll.	NAME.	LOT.	Concession or Street.	Other Description.	P.O.	Occupation.
J706		McDougall, Peter . . . e hf s hf 12	6		M F and O	2	Farmer
J721		McPhail, Arch n hf 10	4		M F and O	2	Farmer
722		McPhail, Arch J . . . u hf 10	4		M F & F S	2	Farmer
736		McGregor, James . . . s hf 7 and o p	3		M F and O	12	Farmer
J735		McGregor, Thomas . . n hf 7	3		M F and T	12	Farmer
737		McGregor, Lorn F . . s hf 7 and o p	3		M F & F S	12	Farmer
738		McGregor, Evan . . . s hf 7 and o p	3		M F & F S	12	Farmer
J746		McCracken, James . . e hf s hf 5 and o p	2		M F and O	12	Farmer
747		McCracken, John A . . e hf s hf 5 and o p	2		M F & F S	12	Farmer
J686		McKenzie, John W . . w hf n hf 5	5		M F and T	7	Farmer
685		McKenzie, Wm . . . w hf n hf 5	5		M F & F S	7	Farmer
742		McMullen, Thos . . . 8	2		M F and O	1	Farmer
J741		McMullen, Thos J . . . 8	2		M F and O	1	Farmer
J740		McCrackin, Samuel A . . w hf s hf 9	2		M F and O	1	Farmer
J784		Niehols, Daniel . . . 6 and 7, Midd	2		M F and O	12	Publican
J842		Pettit, Francis w hf n hf 3	6		M F and O	7	Farmer
J852		Pettit, Levi pt n hf 2 & 3, w hf s hf 4	6 and 7		M F, T & O	1	Farmer
853		Pettit, Walter . . . pt n hf 2 & 3, w hf s hf 4	6 and 7		M F & F S	7	Farmer
J854		Pettit, Henry w hf n hf 3	6		M F & F S	7	Farmer
J864		Pierce, Francis e hf s hf 8	5		M F and O	2	Farmer
J863		Pierce, Benjamin . . pt s hf 3	5		M F and T	7	Farmer
J860		Pettit, Martin e hf s hf 3	5		M F and O	7	Farmer
J855		Pierce, Robert pt n hf 1	5		M F and O	7	Farmer
J856		Phillips, James pt 2	6		M F and O	7	Farmer
J857		Paisley, Wm w hf s hf 3, w hf s hf 5	6		M F and O	7	Farmer
J858		Paisley, Samuel . . . w hf s hf 3	6		M F and O	7	Farmer

Occupation.	Jur.	No. on Roll	NAME.	LOT.	Concession or Street.	Other Description.	P.O.	Occupation.
2..Farmer	J	95	Pullen, Noah e hf n hf 6	5		M F and O . .	7	Farmer
2..Farmer	J	89	Pullen, Joseph s hf 7, pt 6	6		M F and O . .	7	Farmer
2..Farmer	J	85	Pullen, John n hf s hf 5	6		M F and O . .	7	Farmer
12..Farmer	J	86	Pierce, Thomas . . w hf s hf 5, s hf s hf 4	5		M F and O . .	7	Farmer
12..Farmer	J	74	Philips, Walter pt n hf 1	2		M F and O . .	12	Drover
12..Farmer	J	73	Philips, Albert s hf 1	2		M F and O . .	12	Farmer
12..Farmer		870	Patrick, Wm e pt n hf 8	3		M F & F S . .	1	Farmer
12..Farmer	J	86	Pierce, Uri w $\frac{3}{4}$ s hf 8	4		M F and O . .	1	Farmer
2..Farmer		865	Peters, James n hf 11	4		M F and T . .	2	Farmer
7..Farmer		901	Ramey, James e hf n hf 2	5		M F and O . .	7	Farmer
7..Farmer	J	902	Ramey, Joseph e hf n hf 2	5		M F and O . .	7	Farmer
1..Farmer	J	905	Ramey, Thos G w hf s hf 2	5		M F and O . .	7	Farmer
1..Farmer	J	900	Ramey, Wm w hf n hf 2	5		M F and O . .	7	Farmer
2..Publican	J	903	Richardson, John . . e hf s hf 11	5		M F and O . .	2	Farmer
		580	Rice, Frederick . . e pt s hf 3	5		M F and O . .	7	Farmer
7..Farmer	J	913	Ramsay, George . . n hf 10	3		M F and O . .	1	Farmer
1..Farmer		922	Ramsay, Geo D . . e hf s hf 14	2		M F and O . .	1	Farmer
7..Farmer		914	Robinson, John . . e hf s hf 5	3		M F and O . .	12	Farmer
7..Farmer	J	916	Rae, Alexander . . n pt 3 and o p	2		M F and O . .	12	Farmer
2..Farmer		917	Rae, James n pt 3 and o p	2		M F & F S . .	12	Farmer
7..Farmer		918	Rae, Duncan n pt 3 and o p	2		M F & F S . .	12	Farmer
7..Farmer		919	Rae, S G n pt 3 and o p	2		M F & F S . .	12	Farmer
7..Farmer	J	915	Robinson, Geo W . . s hf 5	3		M F and T . .	12	Farmer
7..Farmer		963	Stephenson, Wm R . . e hf n hf 4 and o p . . 5 and 6 . .			M F & F S . .	7	Farmer
Farmer	J	961	Stephenson, Alfred . . e hf n hf 4 and o p . . 5 and 6 . .			M F and C . .	7	Farmer

Jur.	No. on Roll.	NAME.	LOT.	Concession or Street.	Other Description.	P.O.	Occupation.
	962	Stevenson, Ed S.	e hf n hf 4 and o p	.5 and 6	M F & F S.	7	Farmer
J960		Stevenson, Robert	w hf n hf 4 and o p	.5 and 6	M F and O.	7	Farmer
J978		Sutherland, Geo.	pt n hf 8	4	M F and O.	6	Farmer
J977		Sutherland, John	e hf n hf 7, pt 1	4	M F and O.	2	Farmer
J974		Stuart, John	w hf n hf 6	4	M F and O.	7	Farmer
J1370		Sutherland, Isaac	w hf s hf 7	4	M F and O.	1	Farmer
J993		Sutherland, Thos.	e hf s hf 7	4	M F and O.	1	Farmer
	996	Simmons, Wm T.	e hf s hf 4	4	M F & F S.	12	Farmer
J994		Sutherland, Alex.	s hf 9, pt 8	4	M F and O.	1	Farmer
J992		Sutherland, Jas I.	n hf 9 and o p	3	M F and O.	1	Farmer
J981		Sutherland, Chas.	w hf n hf 7 and o p	.4 and 3	M F and O.	1	Farmer
J990		Scott, Robert	n hf 12	3	M F and T.	1	Farmer
J1010		Steer, Frank	s hf 12	3	M F & F S.	1	Farmer
J1012		Steer, Walter	s hf 12	3	M F & F S.	1	Farmer
J998		Stuart, Stephen	w hf s hf 2	3	M F and O.	12	Farmer
	991	Stuart, Jas	w hf s hf 2	3	M F & F S.	12	Farmer
J997		Stockings, Chris.	n pt n hf 2	2	M F and O.	12	Farmer
J1026		Seaburn, John W.	s hf 3	2	M F and O.	12	Farmer
J1017		Simmons, Moses	s hf 7	2	M F and O.	12	Farmer
J991		Scott, Alexander	e hf s hf 11	4	M F and O.	1	Farmer
J964		Smale, Henry	w qr s hf 6 and o p	.6	M F and O.	7	Farmer
		<i>Stonehouse Alvin</i>	<i>3</i>	<i>5</i>	<i>777 7</i>		
J1057		Toal, Wm	n hf 7	5	M F and O.	7	Farmer
J1058		Toal, David J.	n hf 7	5	M F & F S.	7	Farmer
J1041		Trott, Wm	n hf 9	2	M F and O.	1	Farmer
J1040		Trott, James S.	s hf 9	3	M F and O.	1	Farmer
1068		Thompson, John	w pt s pt 11	2	M F and O.	1	Farmer
1069		Thompson, Frank B.	w pt s pt 11	2	M F & F S.	1	Farmer

P.O. Occupation.
 .. 7.. Farmer
 .. 7.. Farmer
 .. 6.. Farmer
 .. 2.. Farmer
 .. 7.. Farmer
 .. 1.. Farmer
 .. 1.. Farmer
 .. 12.. Farmer
 .. 1.. Farmer
 .. 1.. Farmer
 .. 1.. Farmer
 .. 1.. Farmer
 .. 1.. Farmer
 .. 12.. Farmer
 .. 12.. Farmer
 .. 12.. Farmer
 .. 1.. Farmer
 .. 7.. Farmer
 .. 7.. Farmer
 .. 1.. Farmer
 .. 1.. Farmer
 .. 1.. Farmer

Jur.	No. on Roll.	NAME.	LOT.	Concession or Street.	Other Description.	P.O.	Occupation.
	1079	Thornton, Frederick	n cor n hf 12	6	M F and O.	2	Farmer
J1070		Thompson, John H.	e pt s hf 11	2	M F and O.	1	Farmer
1071		Thompson, Francis	pt s hf 11 and 12	2	M F and O.	1	Farmer
1072		Thompson, Wilbert	pt s hf 11 and 12	2	M F & F S.	1	Farmer
1145		Westbrook, Leonard	blk I, Midd 1	2	M F and O.	12	Farmer
1112		Wakem, John	e hf n hf 3	6	M F and O.	7	Farmer
J1117		Whittaker, Joseph	w hf s hf 6	6	M F and O.	7	Farmer
J1111		Watson, Walter W.	e hf n hf 9, n hf 12	5 and 6	M F, T & O.	2	Farmer
1142		White, James	Midd 2	2	M F and O.	12	Sec For'n
J1128		Welch, David	pt s hf 10 and 11	5	M F and T	2	Farmer
1127		Welch, Lyman	e pt s hf 10	5	M F and O.	1	Merchant
J1115		Wakem, Thor	n hf 6	6	M F and O.	7	Farmer
J1114		Webb, Richard	e pt n hf 11	6	M F and O.	2	Farmer
J1141		Wilcox, Thos A.	n hf 11	3	M F and T.	1	Farmer

PART II.—Persons Entitled to Vote at Municipal Elections ONLY.

10	Anstey, John	n hf 3	5	Owner	2	Gentle'man
577	Addison, Wm	e hf s hf 9	6	Owner	24	Farmer
493	Berdan, John	e pt s hf 1	3	Owner	2	Gentlem'n
589	Campbell, Wm J.	e cor n hf 12	2	Owner	2	Farmer
419	Glennie, Geo.	pt s hf 3	5	Owner	7	Farmer
478	Hutcheson, Margaret	e hf n hf 6	4	Owner	7	Widow
491	Harrison, Elizabeth	c hf s hf 5	4	Owner	12	Widow

7 CA

Jur.	No. on Roll.	NAME.	LOT.	Concession or Street.	Other Description.	P.O.	Occupation
	465	Howe, Joseph	n hf 1	6	Owner	13.	Farmer
	701	McLean, Nancy	n hf 11	5	Owner	2.	Widow
	704	McDougall, Jane	w hf s hf 12	6	Owner	2.	Widow
	694	McKee, Jas	s hf 1	5	Owner	12.	Farmer
	425	McEwen, Robt	n hf 6	3	Owner	17.	Farmer
	695	McKee, J D	s hf 2	4	Owner	12.	Farmer
	1110	Oaks, Mary	n hf 12	6	Owner	21.	Widow
	869	Patrick, Jane	e pt n hf 8	3	Owner	12.	Widow
	862	Pierce, Mary A	pt s hf 8	5	Owner	7.	Widow
	843	Patterson, Thos	pt n hf 1	5	Owner	7.	Farmer
	632	Raymond, Mildred	n hf 12	4	Owner	2.	Widow
	995	Sinmons, Amelia	e hf s hf 4	4	Owner	12.	Widow
	1009	Steer, Sarah	s hf 12	3	Owner	1.	Widow
	337	Thompson, Alex	s hf 12	5	Owner	2.	M D

PART III.—Persons Entitled to Vote at Elections to the Legislative Assembly ONLY.

62 Butterfield, Albert . n pt 15M F. 7.. Farmer

W Collins Patrick 8 2 217 1

Polling Sub-Division No. 4.

Occupation	Jur.	No. on Roll.	NAME.	LOT.	Concession or Street.	Other Description.	P.O.	Occupation.
Farmer		326	Dudley, Wm H.	s hf 4	2	M F	12	Farmer
		316	Dobinson, Wm	n hf 4	6	M F	7	Farmer
Widow			<i>Garnett Shook hills</i>	<i>12</i>	<i>3</i>	<i>217</i>	<i>12</i>	
Widow			<i>Harris Walter</i>	<i>8</i>	<i>6</i>	<i>217</i>	<i>2</i>	
Widow			<i>Kellestine Shoo</i>	<i>8 5</i>	<i>2 5</i>	<i>217</i>	<i>7</i>	
Farmer		583	Langford, Albert	w hf s hf 11	5	M F	2	Farmer
Farmer		579	Leitch, Wm H	n hf 11	5	M F	2	Farmer
Farmer			Lester, Chris	e hf n hf 6	4	M F	7	Farmer
Farmer			<i>Little John</i>	<i>8</i>	<i>4</i>	<i>217</i>	<i>1</i>	
		631	Mills, Jos	n hf 5	4	M F	7	Farmer
Widow		734	McCloud, John R	s hf 12	4	M F	1	Teacher
Widow			<i>Niols Geo</i>	<i>1</i>	<i>2</i>	<i>217</i>	<i>12</i>	
Widow		850	Pickett, Hiram	s hf 1	4	M F	12	Sec For'n
Widow			<i>Pullman Sam</i>	<i>2</i>	<i>3</i>	<i>217</i>	<i>12</i>	
Farmer		923	Ransom, Alfred E	s hf 10	2	M F	1	Farmer
Widow			<i>Stockings Chas</i>	<i>6</i>	<i>5</i>	<i>217</i>	<i>7</i>	
Widow		980	Sussex, Fred	n hf 2	2	M F	7	Sta Mas'r
Widow			<i>Sutherland Wm</i>	<i>7</i>	<i>3</i>	<i>217</i>	<i>1</i>	
Widow			<i>Sutherland Henry</i>	<i>10</i>	<i>2</i>	<i>217</i>	<i>1</i>	
Widow		1143	White, James	n hf 1	2	M F	12	Engineer
Widow		1144	Wrightman, Hamilton	n hf 1	2	M F	12	Laborer
M D		1116	Wilson, Edward	w hf n hf 3	6	M F	7	Farmer

slative

Farmer

CH

Polling Sub-Division No. 5,

Comprising all that portion of the Township lying in the North half of the 6th,
and the 7th, 8th, 9th, and 10th Concessions East of the
Side Road between Lots 12 and 13.

Polling Station at School House, School Section No. 7.

PART I.—Persons Entitled to Vote at BOTH Municipal Elections and Elections to the Legislative Assembly.

Jur.	No. on Roll.	NAME.	LOT.	Concession or Street.	Other Description.	P.O.	Occupation.
J	43	Buttery, John...	s w pt s hf 13	9	M F and O.	2.	Farmer
J	38	Bond, Samuel	n hf 16	9	M F and O.	2.	Farmer
J	36	Brooks, Hugh	s hf 21, s hf 22	10	M F and O.	2.	Farmer
	37	Brooks, John	s hf 21, s hf 22	10	M F & F S.	2.	Farmer
	51	Ball, William	pt s hf 20	9	M F & F S.	2.	Farmer
J	30	Ball, Robt T.	e hf n hf 21	10	M F and O.	2.	Farmer
	66	Bell, Richard	pt s hf 20, s hf 20	7 and 8	M F and O.	2.	Farmer
	68	Bell, James S	pt s hf 20, s hf 20	7 and 8	M F & F S.	2.	Farmer
	67	Bell, Robt W	pt s hf 20, s hf 20	7 and 8	M F & F S.	2.	Farmer
	69	Bell, Matthew F.	pt s hf 20, s hf 20	7 and 8	M F & F S.	2.	Farmer
	52	Brown, Wm.	e hf n hf 13 and o p.	7 and 8	M F and O.	2.	Farmer
	53	Brown, Geo W.	e hf n hf 13 and o p.	7 and 8	M F & F S.	2.	Farmer
J	54	Brown, Henry S.	w hf n hf 13 and o p.	7	M F and O.	2.	Farmer
J	31	Branton, Thos.	e hf n hf 14, pt s hf 20	6 and 7	M F and O.	2.	Farmer
J	33	Branton, Wm	n hf 24	10	M F and T.	2.	Farmer
J	35	Brooks, Thos	n hf 23 and 24	9	M F and T.	11.	Farmer

Jul.	No. on Roll.	NAME.	LOT.	Concession or Street.	Other Description.	P.O.	Occupation.
J148		Campbell, Chas A. . . s hf 16	16	10	M F and O . .	2 .	Farmer
J151		Campbell, Mal M. . . w hf 23	23	10	M F and O . .	9 .	Farmer
153		Campbell, Arch J. . . w hf 23	23	10	M F & F S . .	2 .	Farmer
152		Campbell, Peter T. . . w hf 23	23	10	M F & F S . .	2 .	Farmer
154		Campbell, Donald . . . 19	19	10	M F and O . .	2 .	Farmer
J155		Campbell, John K. . . 19	19	10	M F & F S . .	2 .	Farmer
J156		Campbell, Alex K. . . 19	19	10	M F & F S . .	2 .	Farmer
157		Campbell, Alex C. . . e hf 18	18	10	M F and O . .	2 .	Farmer
158		Campbell, John C. . . e hf 18	18	10	M F & F S . .	2 .	Farmer
J172		Collins, Wm A. . . . pt s hf 13 and 14	13 and 14	9	M F and T . .	2 .	Farmer
J188		Crawford, Arch s hf 19	19	9	M F and O . .	2 .	Farmer
J192		Campbell, Arch 21 and o p	21 and o p	8 and 9 . . .	M F and O . .	2 .	Farmer
J193		Crawford, Duncan . . s hf 17	17	8	M F and O . .	2 .	Farmer
159		Campbell, Oliver W. . e hf 18	18	10	M F & F S . .	2 .	Farmer
J206		Campbell, Arch M. . . n hf 24	24	6	M F and O . .	11 .	Farmer
J205		Campbell, Malcolm . . s hf 23	23	7	M F and T . .	2 .	Farmer
J194		Collins, Jas G . . . e hf w hf s hf 14 & o p	14 & o p	8	M F, O & T . .	2 .	Farmer
J171		Collins, Thos S. . . . s hf w hf s hf 13 & 14	13 & 14	9	M F and O . .	2 .	Farmer
J202		Campbell, Duncan . . w hf n hf 21	21	6	M F and O . .	2 .	Farmer
1360		Chisholm, Geo. . . . pt n hf 17	17	10	M F and O . .	2 .	Farmer
J309		Degraw, John G . . . pt s hf 16	16	9	M F and O . .	2 .	Farmer
310		Degraw, Mordicai . . pt s hf 16	16	9	M F and T . .	2 .	Farmer
297		Dolphin, Alex s e cor s hf 20	20	9	M F and O . .	2 .	Farmer
J318		Dolphin, James n hf 23	23	8	M F and T . .	2 .	Farmer
J312		Degraw, Cornelius . . pt s hf 15 and 16	15 and 16	9	M F and O . .	2 .	Farmer
313		Degraw, Duncan . . pt s hf 15 and 16	15 and 16	9	M F & F S . .	2 .	Farmer

of the 6th,

7.

nd Elections

O. Occupation.

2. Farmer

2. Farmer

2. Farmer

2. Farmer

2. Farmer

2. Farmer

2. Farmer

2. Farmer

2. Farmer

2. Farmer

2. Farmer

2. Farmer

2. Farmer

2. Farmer

2. Farmer

11. Farmer

No. on Roll.	NAME.	LOT.	Concession or Street.	Other Description.	P.O.	Occupation.
314	Degraw, Archd.	pt s hf 15 and 16	9	M F & F S.	2.	Farmer
J298	Dolphin, Neil	e hf n hf 21	6	M F & F S.	2.	Farmer
J299	Dolphin, Peter	e hf n hf 21	6	M F & F S.	2.	Farmer
J333	Erksine, Thomas	n hf n hf 16	6	M F and O.	2.	Farmer
J392	Graham, Donald G	e hf 23, s hf 24	10	M F and O.	11.	Farmer
393	Graham, Donald A	e hf 23, s hf 24	10	M F & F S.	11.	Farmer
394	Graham, John W	e hf 23	10	M F & F S.	11.	Farmer
J410	Graham, Hugh	e hf s hf 15	8	M F and T.	2.	Farmer
446	Getty, Uriah	w hf n hf 15, pt 16	6	M F and O.	21.	Farmer
J447	Getty, John F	w hf n hf 15, pt 16	6	M F and T.	21.	Farmer
J448	Getty, Edwin	w hf n hf 15, pt 16	6	M F and T.	21.	Farmer
J412	Graham, Alex	w hf s hf 15,	8	M F and T.	2.	Farmer
J459	Hill, John L	pt s hf 16	8	M F and T.	2.	Farmer
J462	Humphrey, Alfred	n hf s hf 17	7	M F and T.	2.	Farmer
J463	Hill, James A	n hf 15 and o p	7	M F and O.	2.	Farmer
480	Henderson, George	n hf 19	6	M F and O.	2.	Farmer
J481	Henderson, John	n hf 19	6	M F and O.	2.	Farmer
482	Henderson, Edwin	n hf 19	6	M F & F S.	2.	Farmer
618	Leitch, Dugald sr.	s hf 13 and o p	7	M F and O.	21.	Farmer
J619	Leitch, Dugald jr.	s hf 23 and o p	7	M F and T.	21.	Farmer
622	Mitchell, John C.	w hf s hf 15	7	M F and O.	21.	Farmer
J623	Mitchell, Jas M.	w hf n hf 14	6	M F and O.	21.	Farmer

Occupation.	Jur.	No. on Roll	NAME.	LOT.	Con.ession or Street.	Other Description.	P.O.	Occupation.
Farmer		774	McLean, Hugh	n hf 21	9	M F & F S.	2	Farmer
Farmer		773	McLean, Neil	n hf 21	9	M F and O.	2	Farmer
Farmer		7319	McLean, Duncan	n hf 23	8	M F and O.	2	Farmer
Farmer		7650	McLellan, Angus	s hf 20 and o p	10	M F and O.	2	Farmer
Farmer		7651	McLellan, Donald	s hf 20 and o p	10	M F and O.	2	Farmer
Farmer		7663	McLean, Allan	e hf n hf 14	8	M F and O.	2	Farmer
Farmer		7668	McLean, Arch	w hf n hf 14	8	M F and O.	2	Farmer
Farmer		7669	McLean, Duncan	s hf 15	9	M F and O.	2	Farmer
Farmer		7667	McLean, Chas	s hf 15	9	M F and O.	2	Farmer
Farmer		7670	McLean, Chas	e pt s hf 18	9	M F and O.	2	Farmer
Farmer		7671	McLellan, Arch	pt w hf n hf 18	8	M F and O.	2	Farmer
Farmer		772	McKellar, Duncan	s hf 23, s hf 21	9	M F and O.	11	Farmer
Farmer		7672	McDongall, Alex C	s hf 24	8	M F and O.	11	Farmer
Farmer		7673	McGugan, Godfrey	n hf 23 and 21	7	M F and O.	11	Farmer
Farmer		7674	McGugan, John A	n hf 23 and 21	7	M F & F S.	11	Farmer
Farmer		7675	McGugan, Arch	n hf 23 and 21	7	M F & F S.	11	Farmer
Farmer		7676	McGugan, Angus	.22, n hf 18, s hf 22	7 and 8	M F and O.	2	Farmer
Farmer		7677	McGugan, Malcolm	.22, n hf 18, s hf 22	7 and 8	M F and O.	2	Farmer
Farmer		7678	McGugan, John	.22, n hf 18, s hf 22	7 and 8	M F and O.	2	Farmer
Farmer		7679	McGugan, Duncan	.22, n hf 18, s hf 22	7 and 8	M F and O.	2	Farmer
Farmer		7680	McNeil, John	s hf 19, n hf 20	8 and 9	M F and O.	2	Farmer
Farmer		7688	McNeil, Angus C	n hf 19 and o p	7	M F and O.	2	Farmer
Farmer		7689	McNeil, John C	n hf 19 and o p	7	M F and O.	2	Farmer
Farmer		7690	McNeil, Duncan C	n hf 19 and o p	7	M F and O.	2	Farmer
Farmer		7691	McNeil, Mal C	n hf 19 and o p	7	M F and O.	2	Farmer
Farmer		7692	McNeil, Arch C	n hf 19 and o p	7	M F and O.	2	Farmer
Farmer		693	McMillan, James	w hf n hf 16	7	M F and O.	2	Farmer
Farmer		653	McGuire, Chas	n cor 14	9	M F and T.	2	Farmer

Handwritten initials

Handwritten mark

Handwritten initials

Polling Sub-Division No. 5.

Jur. No. on Roll.	NAME.	LOT.	Concession or Street.	Other Description.	P.O.	Occupation.
J714	McLean, Duncan L sr	n hf 24	7	M F and O.	11.	Farmer
715	McLean, Duncan L jr.	n hf 24	7	M F & F S.	11.	Farmer
M EV 716	McLean, Arch.	n hf 24	7	M F & F S.	11.	Farmer
EV 717	McLean, John A.	n hf 24	7	M F & F S.	11.	Farmer
718	McLean, Donald J.	n hf 24	7	M F & F S.	11.	Farmer
J682	McNeil, Duncan M.	s hf 18	8	M F and O.	2.	Farmer
J684	McNeil, Malcolm M.	s hf n hf 17	8	M F and T.	2.	Farmer
J683	McNeil, Arch M.	s hf n hf 17	8	M F and O.	2.	Farmer
J707	McPhail, Dugald.	s hf 18	7	M F and O.	2.	Farmer
708	McPhail, Hugh	s hf 18	7	M F & F S.	2.	Farmer
J710	McKellar, James.	n hf 23, n hf 22	6	M F and O.	2.	Farmer
J711	McKellar, Duncan.	n hf 23	6	M F & F S.	2.	Farmer
712	McKellar, G W	n hf 23	6	M F & F S.	2.	Farmer
709	McNeil, Alex	s hf 19	7	M F and O.	2.	Farmer
J713	McVicar, Allan	n hf 20	6	M F and O.	2.	Farmer
J785	Northcott, Robt T	s hf n hf 17	6	M F and O	1.	Farmer
823	Perkins, Peter	n pt 13	9	M F and T.	2.	Farmer
J891	Rose, Alex	n hf 20	7	M F and O.	2.	Farmer
1004	Smith, William	e cor n hf 13	6	M F and T.	21.	Farmer
J955	Stanley, Peter	e hf n hf 22	8	M F and O.	2.	Farmer
956	Stanley, Jas A.	e hf n hf 22	8	M F and O.	2.	Farmer
J957	Sinclair, Neil	s hf 23	8	M F and O.	11.	Farmer
J958	Sinclair, Arch	s hf 23	7	M F and O.	11.	Farmer
J970	Sinclair, Arch	s hf 24	7	M F and O.	11.	Farmer

Polling Sub-Division No. 5.

Jur.	No. on Roll.	NAME.	LOT.	Concession or Street.	Other Description.	P.O.	Occupation.
J944		Sabine, Richard	e hf s hf 14	7	M F and F		2..Farmer
J1044		Thompson, David	een pt 17	10	M F and O		2..Farmer
1045		Thompson, Wm B	een pt 17	10	M F & F S		2..Farmer
1050		Thompson, John W	pt 15		M F and O		2..Farmer
1048		Thompson, Robt G	pt 17, pt 15 & 18	9	M F & F S		2..Farmer
1049		Thompson, Silas	pt 17, pt 15 & 18	9	M F & F S		2..Farmer
J1053		Turner, Donald	w hf n hf 15	8	M F and O		2..Farmer
1054		Turner, Hugh sr	s hf 17 and o p	9	M F and O		2..Farmer
J1056		Turner, Hugh jr	s hf 17 and o p	9	M F and T		2..Farmer
J1055		Turner, Peter	s hf 17 and o p	9	M F and T		2..Farmer
1098		Vroman, Nelson	s hf s hf 17	7	M F and O		1..Farmer
J1104		Walsh, John	pt n hf 14	9	M F and O		2..Farmer
J1105		Walsh, John P	pt n hf 14	9	M F & F S		2..Farmer
1106		Walsh, Walter	pt n hf 14	9	M F & F S		2..Farmer
1107		Walsh, Thomas J	pt n hf 14	9	M F & F S		2..Farmer
J1125		Wark, Thomas	s hf 24	9	M F and O		11..Farmer
J1126		Waters, Asa	n hf n hf 17	6	M F and O		1..Farmer

PART II.—Persons Entitled to Vote at Municipal Elections ONLY.

1385	Collins, Sarah	pt w hf n hf 13	8	Owner		2..Widow
464	Collins, Ellen	n hf 14, pt s hf 14	7 and 8	Owner		2..Widow
149	Campbell, Mary	n hf 16	10	Owner		2..Spinster

Jur.	No. on Roll.	NAME.	LOT.	Concession or Street.	Other Description.	P.O.	Occupation.
	150	Campbell, Maggie. n hf 16	10	Owner	2	Spinster	
	458	Collins, Thos E. pt s hf 16	8	Owner	2	Barrister	
	146	Collins, Wm G. e hf n hf 13 and o p. 8	8	Owner	2	Farmer	
	311	Degraw, John. w pt n hf 16	8	Owner	2	Farmer	
	32	Ellworthy, Richard. n hf 24	10	Owner	2	Farmer	
	34	Ellworthy, John P. n hf 23 and 24	9	Owner	15	Farmer	
	411	Graham, Annie. w hf s hf 15	8	Owner	2	Spinster	
	409	Graham, Mary. e hf s hf 15	8	Tenant	2	Spinster	
	414	Graham, Christina. pt n hf 18	6	Owner	2	Spinster	
	407	Leitch, Margaret. e hf s hf 15	8	Owner	2	Spinster	
	408	Leitch, Christina. e hf s hf 15	8	Owner	2	Spinster	
	624	Mitchell, Martha J. w hf n hf 14	6	Owner	21	Spinster	
	652	McGuire, Catharine. n cor 14	9	Owner	2	Widow	
	662	McNeil, Sarah. pt n hf 18	8	Owner	2	Widow	
	681	McNeil, Naney . . . s hf 18	8	Owner	2	Widow	
	315	McLean, Margaret. e hf 18	9	Owner	2	Widow	
	776	McArthur, Dugald. n hf 22	10	Owner	9	Farmer	
	775	McArthur, John. n hf 22	10	Owner	9	Farmer	
	296	McNeil, James. e hf n hf 21	6	Owner	11	Farmer	
	660	McLellan, Nevin. n hf 19	8	Owner	10	Farmer	

W McNeil Duncan 6 1/2 19 7 owner 10

Jur.	No. on Roll.	NAME.	LOT.	Concession or Street.	Other Description.	P.O.	Occupation.
	413	Mefutyre, Arch	pt n hf 18	6	Owner	11	Farmer
	821	Pinecombe, John	n hf 22, n hf 24	9 and 8	Owner	11	Farmer
	898	Rose, Mary	s hf 16	7	Owner	2	Widow
	1003	Reinhardt, Peter	ee eor n hf 13	6	Owner	21	Farmer
	1043	Thompson, Wm A.	n hf 20	10	Owner	2	Farmer
	1046	Thompson, Geo	ee pt 17	10	Owner	2	Farmer
	1047	Thompson, Jessie	pt n hf 17	9	Owner	2	Widow
	1190	Zavitz, Edward	pt 15	10	Owner	1	Farmer

PART III.—Persons Entitled to Vote at Elections to the Legislative Assembly ONLY.

	351	Fraser, Frederiek	s hf 23	9	M F	2	Farmer
	406	Gough, Nelson	s hf 22	9	M F	2	Farmer
	487	Hyatt, Norman	s hf 13	9	M F	2	Farmer
	463	Humphrey, John F.	s hf 13	8	M F	2	Farmer
	945	Sabine, William	ee hf s hf 14	7	M F	2	Farmer
	946	Sabine, Thos	...w hf s hf 15	7	M F	2	Farmer
		<i>W Mcmillan</i>	<i>Hubert 16</i>	<i>7</i>	<i>917</i>	<i>2</i>	<i>CALL</i>
		<i>W Smith</i>	<i>Shore 13</i>	<i>6</i>	<i>917</i>	<i>21</i>	<i>CALL</i>
		<i>W Woodworth</i>	<i>Albert 15</i>	<i>9</i>	<i>917</i>	<i>2</i>	<i>CALL</i>

CALL

Polling Sub-Division No. 6,

Comprising all that portion of the Township lying in the 7th, 8th, 9th and 10th
Concessions, West of the Side Road between Lots 12 and 13.

Polling Station at School House, School Section No. 8.

PART I.—Persons Entitled to Vote at BOTH Municipal Elections and Elections to the Legislative Assembly.

Jur.	No. on Roll.	NAME.	LOT.	Concession or Street.	Other Description.	P.O.	Occupation.
J	7	Adair, John E w hf n hf 6	6	8	M F and O	2	Farmer
	6	Adamson, James cen pt 11	11	9	M F and O	2	Farmer
	5	Adamson, John Q cen pt 11	11	9	M F & F S	2	Farmer
	4	Adamson, Jas R cen pt 11	11	9	M F & F S	2	Farmer
	8	Adair, Geo W w hf n hf 6	6	8	M F & F S	2	Farmer
	3	Ames, Asael pt n hf 4	4	9	M F and T	2	Farmer
J	39	Barnett, Edwin pt n hf 11	11	9	M F and O	2	Carpent'r
J	40	Bennett, George w hf n hf 5	5	10	M F and O	2	Farmer
J	46	Barry, Michael s hf s hf 1 and o p	1 and o p	7 and 8	M F and O	8	Farmer
J	50	Bryant, Wm e hf s hf 5	5	8	M F and O	2	Farmer
	59	Bairns, John s hf 2 and o p	2 and o p	7	M F and O	7	Farmer
J	60	Bairns, Michael s hf 2 and o p	2 and o p	7	M F and O	2	Farmer
	44	Beamer, Henry H n e cor 8	8	8	M F and O	2	Farmer
	45	Beamer, Homer n e cor 8	8	8	M F & F S	2	Farmer
J	48	Bowley, Chas n pt n hf 4	4	8	M F and T	2	Farmer
J	42	Bolton, Joseph s hf 8	8	10	M F and O	2	Farmer

Jur.	No. on Roll.	NAME.	LOT.	Concession or Street.	Other Description.	P.O.	Occupation.
	J147	Collins, Jas W.	hf n hf 12	9	M F and O.	2.	Farmer
	170	Collins, Oscar	pt n hf 11	8	M F and O.	2.	Farmer
	J165	Crealy, Truman	pt n hf n hf 12	9	M F and O.	2.	Farmer
	166	Crealy, John E	pt n hf n hf 12	9	M F & F S.	2.	Farmer
	167	Crealy, Fred W	pt n hf n hf 12	9	M F & F S.	2.	Farmer
	291	Case, George	een pt n hf 4	10	M F & F S.	2.	Farmer
	292	Case, Peter	een pt n hf 4	10	M F & F S.	2.	Farmer
	293	Case, Alfred	een pt n hf 4	10	M F & F S.	2.	Farmer
	J294	Case, James	e pt n hf 4	10	M F and O.	2.	Farmer
	161	Chute, Edmund	w hf 6, w-hf n hf 5	9	M F and O.	2.	Farmer
	J162	Chute, Lionel	w hf 6, w hf n hf 5	9	M F and T.	2.	Farmer
	J163	Cowan, Martin H.	e hf 7	9	M F and F.	2.	Farmer
	175	Cawthrope, Wm	n hf 9, pt n hf 11	8 and 9	M F and O.	2.	Farmer
	185	Columbus, Isaac	n hf 12	7	M F and O.	2.	Farmer
	J190	Campbell, Alex S.	e hf s hf 12	7	M F and O.	2.	Farmer
	180	Cowan, Alex	e hf n hf 2	8	M F and O.	8.	Farmer
	181	Cowan, Malcolm	e hf n hf 2	8	M F & F S.	8.	Farmer
	182	Cowan, Arch	e hf n hf 2	8	M F & F S.	8.	Farmer
	290	Cowan, Ronald	e hf s hf 3, e hf s hf 4	8	M F and O.	2.	Farmer
	186	Columbus, Isaac jr.	n hf 12	7	M F & F S.	2.	Farmer
	160	Carman, Edward	pt n hf 12	9	M F and O.	2.	Gentle'an
	J169	Collins, John E.	pt n hf 11	9	M F and T.	2.	Farmer
	184	Columbus, Louis A.	e pt s hf 10	8	M F & F S.	2.	Farmer
	177	Cook, Solomon	een pt n hf 8	8	M F and O.	2.	Farmer
		<i>Campbell J a</i>	<i>2 1/2 1/2 12</i>	<i>7</i>	<i>M F & O</i>	<i>2</i>	<i>DAI</i>
	J304	Dodge, John	e pt n hf 4	9	M F and O.	2.	Farmer
	1377	Drake, John	e pt s hf 6	9	M F & F S.	2.	Farmer

Jur.	No. on Roll.	NAME.	LOT.	Concession or Street.	Other Description.	P.O.	Occupation.
J308		Drake, John	e pt s hf 6	9	M F and O	2	Farmer
1378		Drake, Isaac	e pt s hf 6	9	M F & F S	2	Farmer
J290		Dodge, Thor	s hf w hf 3	10	M F and O	8	Farmer
295		Dodge, Geo	s hf w hf 3	10	M F and O	8	Farmer
J302		Deere, Edward	n hf 8	10	M F and T	2	Farmer
J307		Degraw, Theodore	pt n hf 11	9	M F and O	2	Farmer
317		Duire, Geo	e pt n hf 3	9	M F and O	8	Farmer
J334		Elliott, Geo A	pt n hf 11	9	M F and T	2	Farmer
325		Elliott, Duncan	pt n hf 11	9	M F & F S	2	Farmer
336		Elliott, James	pt n hf 11	9	M F & F S	2	Farmer
J349		Ferguson, Ed G	s hf 5	10	M F and O	2	Farmer
J390		Farthing, John	s pt e hf e hf 11 & op	8	M F and O	2	Farmer
J350		Ferguson, James	e hf 10, pt 10 and 11	8 and 9	M F and O	2	Farmer
1376		Ferguson, Wm B	e hf 10, pt 10 and 11	8 and 9	M F & F S	2	Farmer
J353		Fisher, Clement	n hf 5	8	M F and O	2	Farmer
J352		Fisher, Wellington	w pt n hf 3	8	M F and O	8	Farmer
396		Gregory, Benj	e hf n hf 1 & s hf 1	9 and 10	M F & F S	8	Farmer
J395		Gregory, Thos	e hf n hf 1, s hf 1	9 and 10	M F and O	8	Farmer
397		Gregory, Hartwell	e hf n hf 1, s hf 1	9 and 10	M F & F S	8	Farmer
399		Gripton, Henry	w hf e hf 11	8	M F and O	2	Farmer
J400		Gripton, Wm T	w hf e hf 11	8	M F and T	2	Farmer
J402		Gallagher, Owen	n hf 2	7	M F and O	2	Farmer
403		Gallagher, Michael	n hf 2	7	M F & F S	2	Farmer
404		Gallagher, Eugene	n hf 2	7	M F & F S	2	Farmer

Jur. No. Re
391
405
J401
454
J452
453
456
J457
450
537
J538
539
J550
551
J552
553
554
555
556
557
558
559
560
561
562
563
564
565
566
567
568
569
570

Jur.	No. on Roll	NAME.	LOT.	Concession or Street.	Other Description.	P.O.	Occupation.
	391	Grigg, John P	w pt s hf 12 12	9	M F and O	2	Farmer
	405	Gallagher, Wm	n hf 2	7	M F & F S	2	Farmer
J401		Gallagher, John	w hf s hf 3	8	M F and O	2	Farmer
	454	Hunter, Wm J	e hf n hf 6	9	M F & F S	2	Farmer
J452		Hunter, Cyrus	e hf n hf 6	9	M F and O	2	Farmer
	453	Hunter, Eli C	e h n hf 6	9	M F & F S	2	Farmer
	456	Harrington, John sr	w hf s hf 1	8	M F and O	8	Farmer
J457		Harrington, John jr	w hf s hf 1	8	M F and T	8	Farmer
	450	Hill, Wm	pt n hf 11	9	M F and O	2	Farmer
	J537	Jones, Wm	w pt n hf 8	9	M F and T	2	Farmer
	J538	Jennings, John	s e pt s hf 11	9	M F and T	2	Drover
	539	Jennings' John jr	s e pt s hf 11	9	M F & F S	2	Drover
	J552	Kitchen, Hiram	s hf n hf 8	8	M F and T	2	Farmer
	553	Kitchen, Arthur	s hf n hf 8	8	M F & F S	2	Farmer
	J551	Kitchen, Harmon	pt s hf 9	9	M F and O	2	Farmer
	554	Kitchen, John E	pt n hf 6	8	M F and O	2	Farmer
	573	Lamont, Donald jr	n hf 11, pt 10	7	M F & F S	2	Farmer
	J568	Lamont, John	s hf 9	8	M F and O	2	Farmer
	J571	Lamont, Donald sr	n hf 11, pt 10	7	M F and O	2	Farmer
	574	Lamont, John	n hf 11, pt 10	7	M F & F S	2	Farmer
	J570	Lihou, James	e hf n hf 5	9	M F and T	2	Farmer
	J572	Lamont, Duncan	n hf 11, pt 10	7	M F & F S	2	Farmer
	575	Lamont, Angus	n hf 11, pt 10	7	M F & F S	2	Farmer

Polling Sub-Division No. 6.

Jur.	No. on Roll.	NAME.	LOT.	Concession or Street.	Other Description.	P.O.	Occupation.
	J576	Lamont, Arch	s hf 11, pt s hf 10	7	M F and O	2	Farmer
	J629	Morrow, Wm	w hf n hf 8, pt 7	7	M F and T	2	Farmer
	630	Morrow, Robt	w hf n hf 8, pt 7	7	M F and T	2	Farmer
	J625	Mitchell, Harvey	pt n hf 11	9	M F and O	2	Cooper
	626	Mitchell, John	pt n hf 11	9	M F and T	2	Cooper
	J657	McDougall, Hugh	w hf s hf 5 and o p	8	M F and O	2	Farmer
	J660	McDougall, Chas	w hf s hf 5 and o p	8	M F and O	2	Farmer
	J658	McDougall, Duncan	w hf s hf 5 and o p	8	M F and O	2	Farmer
	J649	McDougall, Allan	s hf 6	8	M F and O	2	Farmer
	664	McNeil, John sr	s hf s hf 8	8	M F and O	2	Farmer
	J661	McNeil, Arch	pt w hf n hf 7	7	M F and T	2	Farmer
	665	McNeil, Alex	s hf s hf 8	8	M F & F S	2	Farmer
	666	McNeil, Malcolm	s hf s hf 8	8	M F & F S	2	Farmer
	J659	McDougall, Allan	w hf s hf 5 and o p	8	M F and O	2	Teacher
	J654	McCandless, Jos J	c pt s hf 12, pt 13	9	M F and T	2	Farmer
	J656	McLean, Hector C	n hf s hf 8	8	M F and T	2	Farmer
	655	McWhinney, John	n pt n hf 10	8	M F and O	2	Farmer
	J781	Northcott, Jas E	s hf 8	9	M F and O	2	Farmer
	779	Nicholls, Edward	pt n hf 12	9	M F and O	2	Carpent'r
	780	Nicholls, Chas	pt n hf 12	9	M F and T	2	Carpent'r
	783	Northcott, Cyrus G	s hf 8	9	M F & F S	2	Farmer
	789	Northcott, Andrew T	s hf 8	9	M F & F S	2	Farmer
	J815	Ogg, John	e hf n hf 8	7	M F and O	2	Farmer

Polling Sub-Division No. 6.

Jur.	No. on Roll.	NAME.	LOT.	Concession or Street.	Other Description.	P.O.	Occupation.
	J813	Oaks, Samuel jr	s hf 7	8	M F and O	2	Farmer
	820	Ogg, James	pt n hf 4	9	M F and T	8	Farmer
	J845	Pearson, Edward	w hf s hf 1	9	M F and O	8	Farmer
	J824	Pike, Wm	n hf n hf 6	10	M F and O	2	Farmer
	J825	Patterson, Thomas	s hf n hf 6	10	M F and O	2	Farmer
	J827	Patterson, George	w hf 2	10	M F and O	8	Farmer
	J830	Patterson, John	e hf s hf 4	10	M F & F S	8	Farmer
	J828	Patterson, Andrew	e hf 2	10	M F and O	8	Farmer
	829	Patterson, Jas M	e hf 2	10	M F & F S	8	Farmer
	J826	Payne, Chas G	n hf 2	9	M F and O	8	Farmer
	831	Powers, John	w pt n hf 9	9	M F and O	2	Farmer
	835	Pilfrey, Wm A	s w pt s hf 10	9	M F and O	2	Farmer
	834	Pilfrey, John	s w pt s hf 10	9	M F and O	2	Farmer
	J839	Payne, Harold	e hf s hf 1	9	M F & F S	8	Farmer
	840	Payne, Melville	e hf s hf 1	9	M F & F S	8	Teacher
	847	Powers, Alfred	s hf 9	7	M F and O	2	Farmer
	848	Powers, John A	s hf 9	7	M F & F S	2	Farmer
	849	Powers, Eli T	s s hf 9	7	M F & F S	2	Farmer
	J836	Paine, John J	w hf s hf 4	9	M F and O	8	Farmer
	J837	Payne, Thos H	s hf 3	9	M F, O & T	8	Farmer
	841	Payne, Wm O	w hf w hf 11	8	M F and T	2	Farmer
	J851	Patterson, Neil	w hf s hf 3	7	M F and O	7	Farmer
	J1384	Parsons, Edwin F	s hf 9	10	M F and T	2	Farmer
	846	Pearson, Jos	s hf n hf 1	9	M F and O	8	Farmer
	J839	Quick, Alfred E	w hf s hf 7	9	M F & F S	2	Blacks'ith

Polling Sub-Division No. 6.

Jur.	No. on Roll.	NAME.	LOT.	Concession or Street.	Other Description.	P.O.	Occupation.
	891	Quick, Robt	s hf 6	10	M F and T.	2.	Blacks'ith
J894		Robinson, Joseph	w hf s hf 7	10	M F and T.	2.	Farmer
J895		Robinson, Thos	e hf s hf 7	10	M F and O.	2.	Farmer
J953		Root, Nathaniel	e pt n hf 6	8	M F and O.	2.	Farmer
J948		Saxton, Wm B	een pt 12 and o p	8	M F and O	2.	Farmer
J950		Simpson, Charles	pt n hf 10, pt s hf 10	8 and 9	M F and O.	2.	Farmer
J954		Smith, Calvin	e pt n hf 6	8	M F and T.	2.	Farmer
J943		Shepherd, Joseph A	n hf 1	8	M F and O	8.	Farmer
J952		Saxton, Swain	n hf 9	7	M F and O.	2.	Farmer
J959		Snelgrove, Samuel	w ht s hf 12	7	M F and O.	21.	Farmer
J951		Seymour, Thos	pt s hf 5	7	M F and O.	7.	Farmer
J1052		Titball, Harry	s hf s hf 3	10	M F and T.	8.	Farmer
J1101		Vincent, Geo	s hf s hf 8	7	M F and O.	2.	Farmer
J1109		Whiting, Ernest W	e pt n hf 5	7	M F & F S.	2.	Farmer
J1103		Whiting, John jr	w pt n hf 5	7	M F and O.	2.	Farmer
J1108		Whiting, John sr	e pt n hf 5	7	M F and O.	2.	Farmer
J1113		Wakem, Albert	w hf s hf 5	7	M F and O	7.	Farmer

PART II.—Persons Entitled to Vote at Municipal Elections ONLY.

2	Ames, Ann	pt n hf 4	9	Owner	2.	Widow
41	Barton, Julia	e cor n hf 8	9	Owner	2.	Widow

Polling Sub-Division No. 6.

57

Jur.	No. on Roll.	NAME.	LOT.	Concession or Street.	Other Description.	P.O.	Occupation.
	183	Columbus, Martha	e pt s hf 10	8	Owner	2	Widow
	178	Clement, Geo	n hf 7	8	Owner	2	Farmer
	819	Cowan, Wm	pt n hf 4	9	Owner	2	Gentle'an
	179	Cowan, Mary	n hf 4	8	Owner	2	Widow
	168	Collins, Mary E	pt n hf 11	8	Owner	2	Widow
	173	Collins, Sarah B	e hf s hf 6	9	Owner	2	Spinater
	174	Collins, Sarah	n hf w hf 11	8	Owner	2	Widow
	890	Cowan, Robt L	s hf 6	10	Owner	2	Farmer
	306	Degraw, Fanny	pt n hf 11	9	Owner	2	Widow
	305	Doan, Hannah M	w hf n hf 7	9	Owner	2	Widow
	300	Gunn, Hector	n hf 8	10	Owner	2	Flax Mfr
	398	Gilzean, James	pt 9 and 10	9	Owner	2	Farmer
	451	Healy, James	n hf 1	10	Owner	2	Farmer
	540	Jeffrey, Mary	s e cor n hf 9	10	Owner	2	Widow
	47	Lethbridge, Samuel	n pt n hf 4	7	Owner	2	Bartender
	301	Murray, Wm H	n hf 8	10	Owner	2	Flax Mfr
	928	Morrow, Ann	w hf n hf 8	7	Owner	2	Widow
	778	Nettleton, Arthur H	n e cor 9	10	Owner	2	Drayman
	821	Pearson, Jos	s hf n hf 1	9	Owner	8	Farmer
	838	Payne, Margaret	e hf s hf 1	9	Owner	8	Widow

2

No. on Roll.	NAME.	LOT.	Concession or Street.	Other Description.	P.O.	Occupation.
888	Quick, Elizabeth..w	hf s hf 79	Owner.....	2..Widow
569	Reynolds, Isabella..e	hf n hf 59	Owner.....	2 Widow
893	Robinson, Amelia..w	hf s hf 710	Owner.....	2..Widow
896	Rowe, Anniew hf n hf 28	Owner.....	8 .Widow
892	Richardson, Wm..pt	n hf 39	Owner.....	8..Sawyer
897	Rowe, Wmw pt s hf 29	Owner.....	8..Farmer
847	Saxton, Francis B..pt	n hf 9 and o p	..10	Owner.....	2..Farmer
1051	Tull, Josephs hf s hf 310	Owner.....	8..Postmas'r
1042	Thompson, Henry..pt	10 and 119	Owner.....	2. Farmer
1102	Vincent, Hannah..n	pt s hf 87	Owner.....	2..Spinster

PART III.—Persons Entitled to Vote at Elections to the Legislative Assembly ONLY.

178	Cady, Wms hf 09	M F.....	2..Farmer <i>CALL</i>
195	Campbell, J A..e	hf s hf 127	M F.....	2..Farmer <i>CALL</i>
455	Hyatt, Sherman..n	hf 128	M F.....	2..Farmer
555	Kelly, Charless hf 17	M F.....	13. Farmer

Polling Sub-Division No. 6.

<i>Jur.</i>	No. on Roll.	NAME.	LOT.	Concession or Street.	Other Description.	P.O.	Occupation.
	627	Misener, Andrew	hf 7 and 8	8	M F	2	Farmer
	811	Oak, Thor	hf 5	10	M F	2	Farmer
	812	Oak, Elias	hf 5	10	M F	2	Farmer
	844	Peters, Chas	hf 8	9	M F	2	Farmer
	949	Saxton, John E	pt 12	8	M F	2	Gentle'an

2

CALL
CALL

[Faint, illegible markings]

Polling Sub-Division No. 7.

Jur.	No. on Roll	NAME.	LOT.	Concession or Street.	Other Description.	P.O.	Occupation.
	65	Baxter, Thos n qr n hf 17	5		M F and F.	1.	Farmer
	83	Buchanan, Duncan . n pt 19	4		M F and F.	1.	Farmer
	84	Buchanan, Hugh . n pt 19	4		M F and F.	1.	Farmer
J	82	Brearly, Henry . n hf n hf 20	4		M F and O.	1.	Farmer
	63	Ballantine, James . pt s hf 13	6		M F and O.	2.	Farmer
	89	Black, George e pt 18	4		M F and O.	1.	Farmer
	90	Black, Horner e pt 18	4		M F and T .	1.	Farmer
		Black, Wm F e pt 18	4		M F and T .	1.	Farmer
J	88	Badge, William . n hf n hf 18	3		M F and O.	1.	Farmer
J	73	Brown, Henry w hf s hf 18 and o p .	6		M F and O .	1.	Farmer
	74	Brown, Wm F w hf s hf 18 and o p .	6		M F & F S .	1.	Teacher
		<i>W Clark & A</i> <i>12 1/2 18</i> <i>3</i> <i>1774 7 1</i> <i>OKL</i>					
		<i>W Gady Mrs</i> <i>12 1/2 15</i> <i>5</i> <i>1774 7 1</i> <i>OKL</i>					
	207	Campbell, John . . pt w hf 22, pt e hf 22.	5		M F and O.	10.	Farmer
	208	Campbell, Alfred E . . pt w hf 22, pt e hf 22 .	5		M F & F S .	10.	Farmer
J	211	Campbell, Arch L . . e hf n hf 23, s hf 24 .	5 and 6		M F and T .	11.	Farmer
	212	Campbell, Norman L . . e hf n hf 23, s hf 24 .	5 and 6		M F and T .	11.	Farmer <i>OKL</i>
	214	Campbell, Dug L . . e hf n hf 23, s hf 24 .	5 and 6		M F and T .	11.	Farmer <i>OKL</i>
J	213	Campbell, John L . . e hf n hf 23, s hf 24 .	5 and 6		M F and T .	11.	Farmer
J	191	Campbell, Peter L . n hf 13	4		M F and O .	2.	Farmer
J	198	Courtis, Wm w hf n hf 15 and o p .	5		M F and O .	1.	Farmer
J	189	Courtis, Thos e hf n hf 13 and o p .	5		M F and O .	1.	Farmer
J	187	Courtis, Robt B . . pt s hf 14	6		M F and O .	2.	Farmer
J	199	Courtis, Stephen B . . w hf s hf 15	5		M F and O .	2.	Farmer
J	209	Campbell, Mal J . . pt s hf 23	6		M F and O .	10.	Farmer
J	215	Campbell, Arch R . . s hf 22	6		M F and O .	10.	Farmer
	227	Cave, Thomas n cor s hf 16	4		M F and O .	2.	Farmer
	201	Cave, Joseph n cor n hf 17	4		M F and O .	2.	Carpenter

2

OKL

Jur.	No. on Roll.	NAME.	LOT.	Concession or Street.	Other Description.	P.O.	Occupation.	Jur. No. Roll.
J321		Davidson, John J.	s hf 20, pt 194 and 5M F and O	..1	..Farmer	J595
320		Davidson, Thos	w hf s hf 19 and o p	..4 and 5M F and O	..1	..Farmer	584
361		Forsythe, Wmpts 17 and 183M F and O	..1	..Farmer	J621
J354		Fletcher, Archs hf 21 and o p6M F and O	..10	..Farmer	635
359		Fletcher, Donalds hf 21 and o p6M F & F S	..10	..Farmer	1380
364		Forbes, Duncann e cor n hf 223M F and O	..1	..Farmer	1381
J363		Frank, Wm Pn hf 224M F and O	..10	..Farmer	
362		Forsythe, Wallacew hf s hf 215M F and T	..1	..Farmer	J723
417		Green, Edwardn hf 215M F and O	..2	..Farmer	J724 719
J418		Green, Thomase hf s hf 206M F and O	..2	..Farmer	J720
J424		Getty, Alberte hf n hf 153M F and O	..1	..Farmer	J733
422		Glover, Davidw hf s hf 214M F and O	..1	..Farmer	J731
423		Glover, Jacksonw hf s hf 214M F & F S	..1	..Farmer	J730
J415		Glover, Jamesw hf s hf 224M F and O	..1	..Farmer	1000
421		Gilders, Edpt n hf 213M F and T	..1	..Farmer	789
J485		Hyatt, Horacee hf n hf 13 and o p	..3M F, O & T	..1	..Farmer	78
486		Hyatt, Hcalon We hf n hf 13 and o p	..3M F and O	..1	..Farmer	J80
473		Howe, Wms cor 14 and o p	..6 and 5M F and O	..21	..Farmer	81
475		Humphrey, Thosn cor s hf 166M F and O	..1	..Farmer	
J496		Hyatt, Silasw hf n hf 133M F and T	..1	..Farmer	J86
476		Hutton, Alex Bpt n hf 173M F and O	..1	..Gentle'an	J86
816		Hore, Chase hf's hf 196M F and T	..1	..Farmer	9
J530		Hes, Wme hf s hf 215M F and T	..1	..Farmer	J91

Polling Sub-Division No. 7.

63

Jur.	No. on Roll.	NAME.	LOT.	Concession or Street.	Other Description.	P.O.	Occupation.
	585	Lamont, Duncan . . .	hf 24	4	M F and O.	10.	Farmer
	584	Lipsit, Charles . . .	pt n hf 16	4	M F and O.	1.	Farmer
	621	Mahon, John . . .	w pt n hf 16	4	M F and O.	1.	Farmer
	635	Mote, Jas.	w hf n hf 15 and o p	3	M F and O.	1.	Farmer
	1380	Mote, Geo	w hf n hf 15 and o p	3	M F and O.	1.	Farmer
	1381	Mote, Jos.	w hf n hf 15 and o p	3	M F and O.	1.	Farmer
	723	McBain, Dugald. . .	s hf 23	5	M F and O.	10	Farmer
	724	McBain, Peter . . .	s hf 23	5	M F and O.	10	Farmer
	719	McCallum, Neil. . .	n hf 24	5	M F and O.	10.	Farmer
	720	McCallum, Duncan. . .	n hf 24	5	M F & F S.	10.	Farmer
	733	McEvoy, Thos A. . .	pt 17	3 and 4	M F and T.	1.	Farmer
	731	McCready, Thos. . .	s hf 24	5	M F and O.	10	Farmer
	730	McCready, James. . .	s hf 24	5	M F and O.	10.	Farmer
	1000	Northcott, Wm . . .	pt n hf 16	4	M F and O.	1.	Farmer
	788	Norton, Wm	n w pt n hf 22	3	M F and O.	1.	Farmer
	787	Northcott, Thos A. . .	pt n hf 16	4	M F and O.	1.	Farmer
	806	Northcott, Augustus. . .	s hf 17 and o p	6	M F and O.	1	Farmer
	818	Oliver, John.	pt w hf 18	4	M F and T.	1.	Farmer
	866	Parrott, Geo B. . . .	w hf s hf 13 and o p	4	M F and O.	1	Farmer
	867	Parrott, Thos A. . .	w hf s hf 13 and o p	4	M F and T.	1	Farmer
	910	Root, Wm A	pt n hf 17	3	M F and T.	1.	Farmer
	911	Robinson, Joseph . . .	pt n hf 17 and 18	3	M F and O.	1.	Farmer

2

Polling Sub-Division No. 7.

Jur.	No. on Roll.	NAME.	LOT.	Concession or Street.	Other Description.	P.O.	Occupation.
J908		Runnalls, Joseph.	n hf 19	3	M F and O.	1	Farmer
907		Root, John A	pt n hf 21	3	M F and T.	1	Farmer
J969		Sabine, Caleb	e hf n hf 15	5	M F and O.	2	Farmer
989		Sisson, Joseph	pt s hf 16	4	M F and O.	1	Farmer
985		Sullivan, Thos.	w hf n hf 20	3	M F and O.	1	Farmer
J986		Sullivan, John	w hf n hf 20	3	M F and O.	1	Farmer
1001		Snelgrove, David	pt n hf 16	3	M F and T.	1	Farmer
1002		Snelgrove, Milo	pt n hf 16	3	M F and T.	1	Farmer
J971		Snelgrove, Wm	n hf 19	5	M F and O.	1	Farmer
972		Snelgrove, Wm E.	n hf 19	5	M F & F S.	1	Farmer
J973		Sisson, Cephas	w hf n hf 18	5	M F and O.	1	Farmer
988		Smith, Wm	w hf s hf 20	4	M F and T.	1	Farmer
J967		Sabine, John	e hf s hf 15	6	M F and O.	2	Farmer
J968		Sabine, Lomis	e hf s hf 15	6	M F and O.	2	Farmer
J966		Sabine, James	w hf s hf 15	6	M F and O.	2	Farmer
J984		Steath, Wm	e hf s hf 18	5	M F and O.	1	Farmer
906		Tilden, Chas M	e pt n hf 21	3	M F and O.	2	Farmer
J1094		Veale, Wm	cen pt 16	5	M F and O.	1	Farmer
J1095		Veale, Arch	w pt s hf 16	5	M F and O.	1	Farmer
J1093		Vanattar, Daniel	pt 19	4	M F and O.	1	Farmer
J1096		Veale, John R	pt w hf s hf 16	5	M F and O.	1	Farmer
1097		Vanatter, Ira E.	pt e hf n hf 21	3	M F and T.	1	Farmer
1097		Vennor, Wm	n hf n hf 16	3	M F and T.	1	Farmer

Jur. No. R
J1133

1118

1119

J1129

1130

J112

1131

J114

113

J113

113

113

113

J111

J111

11

11

11

11

11

11

11

11

11

11

11

11

11

11

11

Polling Sub-Division No. 7.

Jur.	No. on Roll.	NAME.	LOT.	Concession or Street.	Other Description.	P.O.	Occupation.
	J1133	Wilton, Thos.	e hf s hf 17	5	M F and O.	1.	Farmer
	1118	Wickett, Richard.	w hf s hf 13	5	M F and O.	2.	Farmer
	1119	Wickett, George	w hf s hf 13	5	M F & F S.	2.	Farmer
	J1129	Waters, Lindley	e hf s hf 13, pt 19	5	M F and O.	1.	Farmer
	1130	Waters, Reuben A.	e hf s hf 13, pt 19	5	M F & F S.	1.	Farmer
	J1122	Wilton, Wesley.	s hf 16, e pt 13	6	M F and O.	2.	Farmer
	J1140	Wyatt, Wm	w hf s hf 14, pt 13	4	M F and O.	1.	Farmer
	1136	Wyatt, Wm J	w hf s hf 14	4	M F and O.	1.	Farmer
	J1137	Winter, Wm	s hf 15	4	M F and O.	1.	Farmer
	J1139	Winter, Geo M.	s hf 15	4	M F & F S.	1.	Farmer
	1133	Winter, John F.	s hf 15	4	M F & F S.	1.	Farmer
	1132	Wilding, Wm	pt s hf 17	4	M F and T.	1.	Blacks'ith
	J1134	Willsie, Asa	e hf n hf 20	3	M F and O.	1.	Trackman
	J1120	Wilton, Amos P.	cen pt 13	6	M F and O.	2.	Farmer
	1121	Wilton, Arthur W.	cen pt 13	6	M F & F S.	2.	Farmer
	1124	Wilton, Amos E.	w hf s hf 17	5	M F & F S.	1.	Farmer
	1135	Welch, Philemon	s cor s hf 16	4	M F & F S.	2.	Farmer

PART II.—Persons Entitled to Vote at Municipal Elections ONLY.

75	Bond, Annis	pt n hf 17	5	Owner	1.	Widow
786	Baxter, Harriet	pt n hf 16	5	Owner	1.	Widow
79	Campbell, Arch.	n hf 14	4	Owner	2.	Gentle'an
210	Campbell, Donald M.	s hf 24	6	Owner	11.	Farmer

Polling Sub-Division No. 7.

Jun.	No. on Roll.	NAME.	LOT.	Concession or Street.	Other Description.	P.O.	Occupation.
	817	Cummiford, Milton	pt w hf 18	4	Owner	2	Agent
	197	Campbell, Eva L.	w hf n hf 13	5	Owner	2	Widow
	138	Davidson, Sarah	pt n hf 17 and 18	3	Owner	26	Widow
	495	Getty, Mary	w hf n hf 13	3	Owner	2	Widow
	449	Graham, Donald F.	s hf 24	4	Owner	10	Farmer
	909	Humphrey, Geo.	pt n hf 17	3	Owner	15	Teamster
	586	Lamont, Hugh	n hf 24	4	Owner	10	Farmer
	725	McIntaggart, Donald	n hf 24	3	Owner	10	Farmer
	729	McKellar, Neil	pt s hf 23	4	Owner	11	Farmer
	726	McIntyre, Hugh	n hf 21	4	Owner	10	Farmer
	732	McEvoy, Andrew M.	pt 17	3 and 4	Owner	15	Co Treas
	727	McMurphy, John	e hf n hf 23	4	Owner	10	Farmer
	728	McMurphy, Dugald	w hf n hf 23	4	Owner	10	Farmer
		<i>McBain Peter</i>	<i>s 1/2 23</i>	<i>5</i>	<i>owner</i>	<i>10</i>	<i>CAH</i>
	807	Northcott, Ephraim	s hf 17 and o p	5 and 6	Owner	1	M D
	987	Smith, Jane	w hf s hf 20	4	Owner	1	Widow
	70	Thomas, David	s hf 19	6	Owner	15	Gentleman

Jur.	No. on Roll.	NAME.	LOT.	Concession or Street.	Other Description.	P O.	Occupation.
	1123	Wilton, Ellen	w hf s hf 17	5	Owner		1..Widow

PART III.—Persons Entitled to Vote at Elections to the Legislative Assembly ONLY.

	14	Adair, Philip L	e hf n hf 15	4	M F		1..Farmer
	81	Baldwin, Frank J.	n hf 14	4	M F		1..Farmer
	200	Clayton, Geo	n hf 15	5	M F		1..Laborer
	474	Howe, Wm J	pt 14	5 and 6	M F	21	Farmer
<i>W</i>	520	Hyatt, Neil	s hf 15	5	M F	1	Farmer
	1361	Lewis, A	pt n hf 24	3	M F	10	Laborer
<i>W</i>	624	Mousocky, Fred	pt n hf 17	3	M F	1	Laborer
<i>CAZ</i>	777	McArthur, Neil	s hf 13	6	M F	21	Laborer
	904	Robinson, Wm G	pt n hf 17	5	M F	2	Teacher
	982	Smitherman, A E	s hf 17	4	M F	1	Sta Agent
	983	Smitherman, Wm A	s hf 17	4	M F	1	Gentle'an
	979	Snelgrove, John	n hf 16	4	M F	1	Sec Hand

Polling Sub-Division No. 7.

Jur. No. on Roll.	NAME.	LOT.	Concession or Street.	Other Description.	P.O.	Occupation.
1059	Todd, John T e pt 13 6 M F 2	Farmer
1131	Waggood, James e hf 17 4 M F 1	Sec For'm

650 of the within named voters are qualified to serve on Juries.

I, C. H. Lockwood, Clerk of the Municipality of the Township of Caradoc, in the County of Middlesex, do hereby certify that parts one and three of the within list constitute a correct list for the year 1898, of all persons appearing by the last revised Assessment Roll of the said Municipality to be entitled to vote at elections for members of the Legislative Assembly; and that parts one and two constitute a correct list for said year of all persons appearing by the said Roll to be entitled to vote at Municipal Elections in said Municipality, and I hereby call upon all electors to examine the said list, and if any omissions or other errors are perceived therein, to take immediate proceedings to have the said errors corrected according to law.

Dated the 26th day of July, 1898.

C. H. LOCKWOOD,
Clerk of the Township of Caradoc,
Mt. Brydges, P. O.

