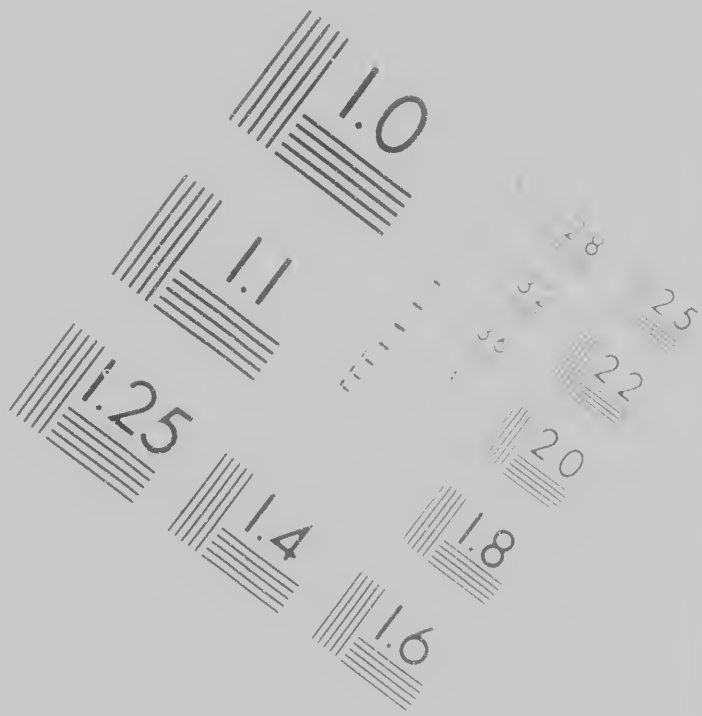


## IMAGE EVALUATION TEST TARGET (MT-3)





CIH  
Mic  
Ser

**CIHM/ICMH  
Microfiche  
Series.**

**CIHM/ICMH  
Collection de  
microfiches.**



Technical

The Institute has attempted to film the original copy available for film. This copy may be bibliographic, which may alter any of the information in reproduction, or which may be a different method of filming, or which may be the usual method of filming.

- Coloured covers/  
 Couverture de couleur
- Covers damaged/  
 Couverture endommagée
- Covers restored and/or  
 Couverture restaurée et/ou
- Cover title missing/  
 Le titre de couverture manquant
- Coloured maps/  
 Cartes géographiques en couleur
- Coloured ink (i.e. other than  
 Encre de couleur (i.e. autre que
- Coloured plates and/or  
 Planches et/ou illustrations en couleur
- Bound with other material  
 Relié avec d'autres documents
- Tight binding may cause  
 La reliure serrée peut causer

Technical and Bibliographic Notes/Notes techniques et bibliographiques

Attempted to obtain the best  
copy for filming. Features of this  
copy bibliographically unique,  
or of the images in the  
copy which may significantly change  
upon filming, are checked below

Color  
couleur

Damage  
dommages

Restored and/or laminated/  
restaurée et/ou pelliculée

Missing  
ouverture manque

Color  
couleur

(other than blue or black)  
(autre que bleue ou noire)

Color and/or illustrations/  
couleur et/ou illustrations

Other material/  
autres documents

May cause shadows or distortion

L'Institut a microfilmé le meilleur exemplaire  
qu'il lui a été possible de se procurer. Les détails  
de cet exemplaire qui sont peut-être uniques  
du point de vue bibliographique, qui peuvent modifier  
une image reproduite, ou qui peuvent exiger une  
modification dans la méthode normale de filmage,  
sont indiqués ci-dessous

Coloured pages/  
Pages de couleur

Pages damaged/  
Pages endommagées

Pages restored and/or laminated  
Pages restaurées et/ou pelliculées

Pages discoloured, stained or foxed  
Pages décolorées, tachetées ou piquées

Pages detached/  
Pages détachées

Showthrough/  
Transparence

Quality of print varies/  
Qualité inégale de l'impression

Includes supplementary material  
Comprend du matériel supplémentaire

Only edition available

The copy filmed here has been reproduced thanks to the generosity of:

Library of Congress  
Photoduplication Service

The images appearing here are the best quality possible considering the condition and legibility of the original copy and in keeping with the filming contract specifications.

Original copies in printed paper covers are filmed beginning with the front cover and ending on the last page with a printed or illustrated impression, or the back cover when appropriate. All other original copies are filmed beginning on the first page with a printed or illustrated impression, and ending on the last page with a printed or illustrated impression.

Maps, plates, charts, etc., may be filmed at different reduction ratios. Those too large to be entirely included in one exposure are filmed beginning in the upper left hand corner, left to right and top to bottom, as many frames as required. The following diagrams illustrate the method

thanks

L'exemplaire filmé fut reproduit grâce à la  
générosité de:

Library of Congress  
Photoduplication Service

ality  
bility  
e

Les images suivantes ont été reproduites avec le  
plus grand soin, compte tenu de la condition et  
de la netteté de l'exemplaire filmé, et en  
conformité avec les conditions du contrat de  
filmage.

filmed  
on  
mpres  
All  
en the  
es-  
nted

Les exemplaires originaux dont la couverture en  
papier est imprimée sont filmés en commençant  
par le premier plat et en terminant soit par la  
dernière page qui comporte une empreinte  
d'impression ou d'illustration, soit par le second  
plat, selon le cas. Tous les autres exemplaires  
originaux sont filmés en commençant par la  
première page qui comporte une empreinte  
d'impression ou d'illustration et en terminant par  
la dernière page qui comporte une telle  
empreinte.

t  
o be  
d  
t to  
s  
the

Les cartes, planches, tableaux, etc., peuvent être  
filmés à des taux de réduction différents.  
Lorsque le document est trop grand pour être  
reproduit en un seul cliché, il est filmé à partir  
de l'angle supérieur gauche, de gauche à droite  
et de haut en bas, en prenant le nombre  
d'images nécessaire. Les diagrammes suivants  
illustrent la méthode.









## of New-York.

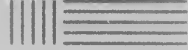
ing been called together, this day,  
Treaty lately negotiated between  
and Great-Britain; It may be con-  
sidered honored by the voice of my fel-  
low-citizens, to state to them, with im-

portance to some place, where a full  
discussion was opposed on the  
part of the Citizens; I  
was here prepared to give his vote up-  
on any purpose it must  
be decided by the President of the Uni-  
ted States, to be satisfactory and  
tending citizens could spare, and  
conclude.

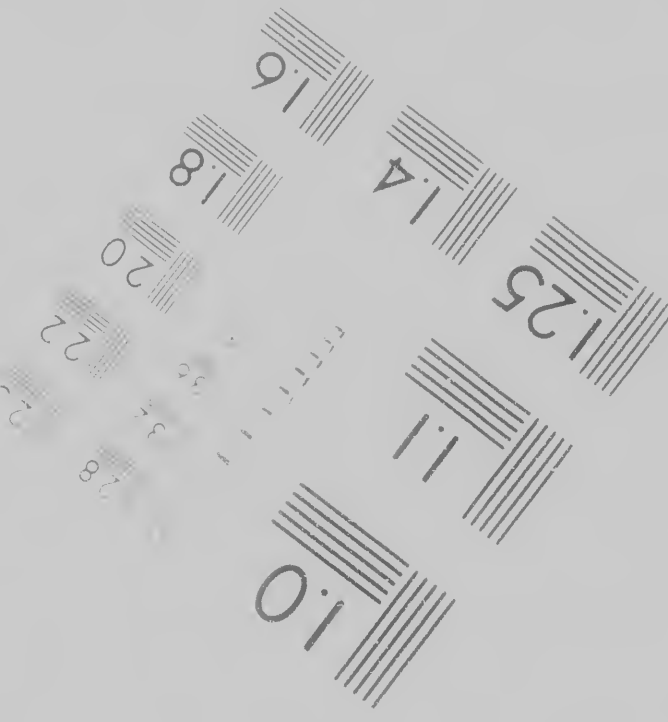
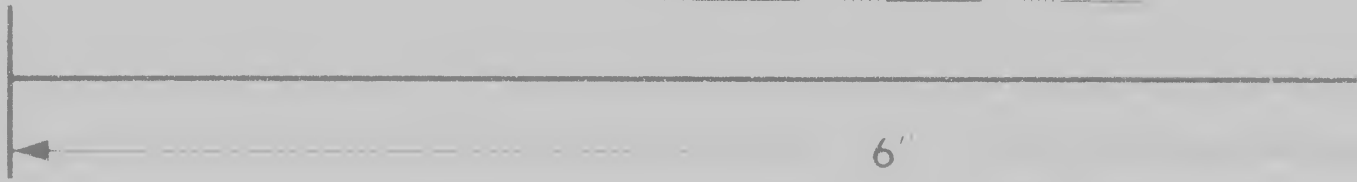
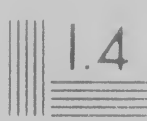
ed (but no discussion had) and a  
few words "Resolved, that it does  
not express any opinion on the Treaty lately  
negotiated with Great-Britain, inasmuch as they have  
committed the President of the United States,  
to the decision of the question constitu-

tion was read though not without in-  
terruption. There were many who advoca-  
ted so much disorder that it was diffi-





1.8

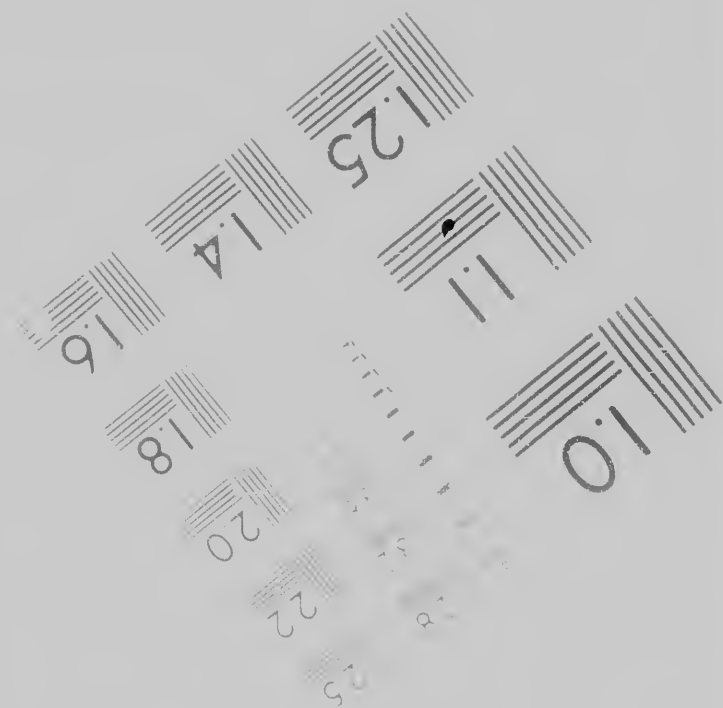


# Photographic Sciences Corporation

23 WEST MAIN STREET  
WEBSTER N Y 14580  
716 872-4503



Canadian Institute for H



AIN STREET  
N Y 1458C  
72-4503



Centre for Historical Microreproductions / Institut canadien de microreproductions historiques

© 1986



s historiques

6

- Planches et/ou illustrations
- Bound with other material
- Relié avec d'autres documents
- Tight binding may cause distortion along interior margin/  
La reliure serrée peut causer une distorsion le long de la marge intérieure
- Blank leaves added during restoration may appear within the text. These leaves have been omitted from this film.  
Il se peut que certaines pages blanches ajoutées lors d'une restauration apparaissent dans le texte, mais, lorsque cela était possible, ces pages n'ont pas été filmées.
- Additional comments
- Commentaires supplémentaires

This item is filmed at the reduction indicated below.  
Ce document est filmé au taux de réduction indiqué ci-dessous.

10X

14X



12X

Illustrations en couleur

Supplementary material/  
Matériel supplémentaire

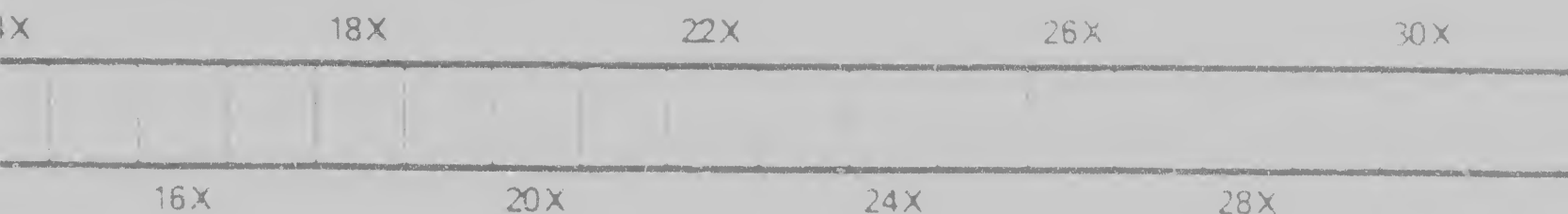
May cause shadows or distortion  
margin/  
peut causer de l'ombre ou de la  
distorsion de la marge intérieure

Pages added during restoration may  
not contain text. Whenever possible, these  
pages are added from filming.  
Certaines pages blanches ajoutées  
pendant la restauration apparaissent dans le texte  
si, dans la mesure du possible, ces pages n'ont

Supplementary material/  
Matériel supplémentaire

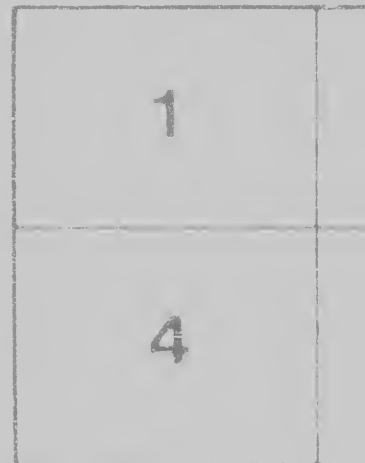
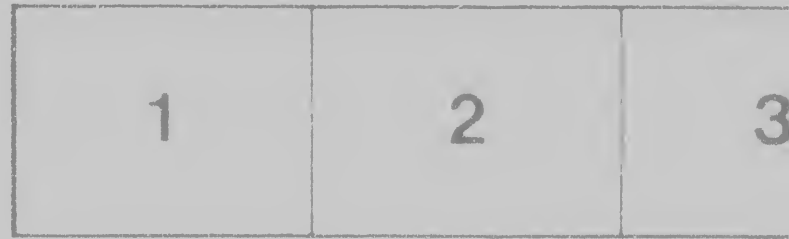
CIHM no. 60594

Check the reduction ratio checked below  
Vérifier au taux de réduction indiqué ci-dessous

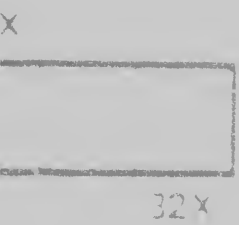


- Qualité inégale de l'impression
- Includes supplementary material.  
Comprend du matériel supplémentaire
- Only edition available.  
Seule édition disponible
- Pages wholly or partially obscured by  
errata slips, tissues, etc., have been refilmed to  
ensure the best possible image.  
Les pages totalement ou partiellement  
obscurcies par un feuillet d'errata, une page  
de tissu, etc., ont été filmées à nouveau de façon  
à obtenir la meilleure image possible

different reduction ratios. Those too large to be entirely included in one exposure are filmed beginning in the upper left hand corner, left to right and top to bottom, as many frames as required. The following diagrams illustrate the method:

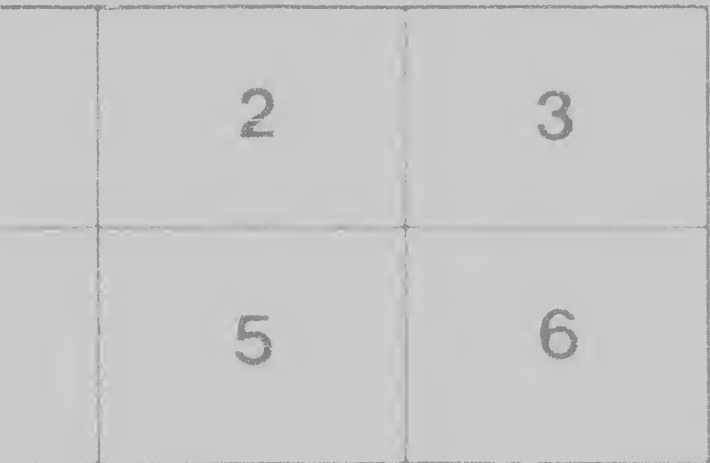
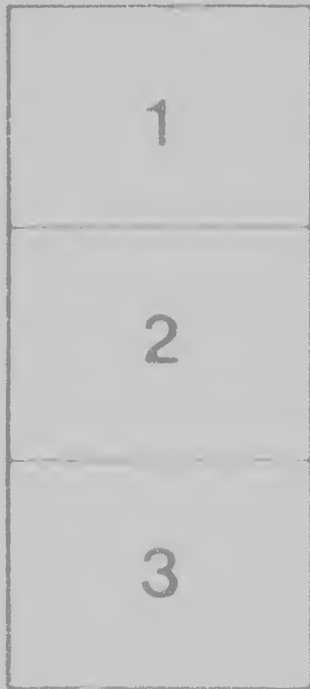


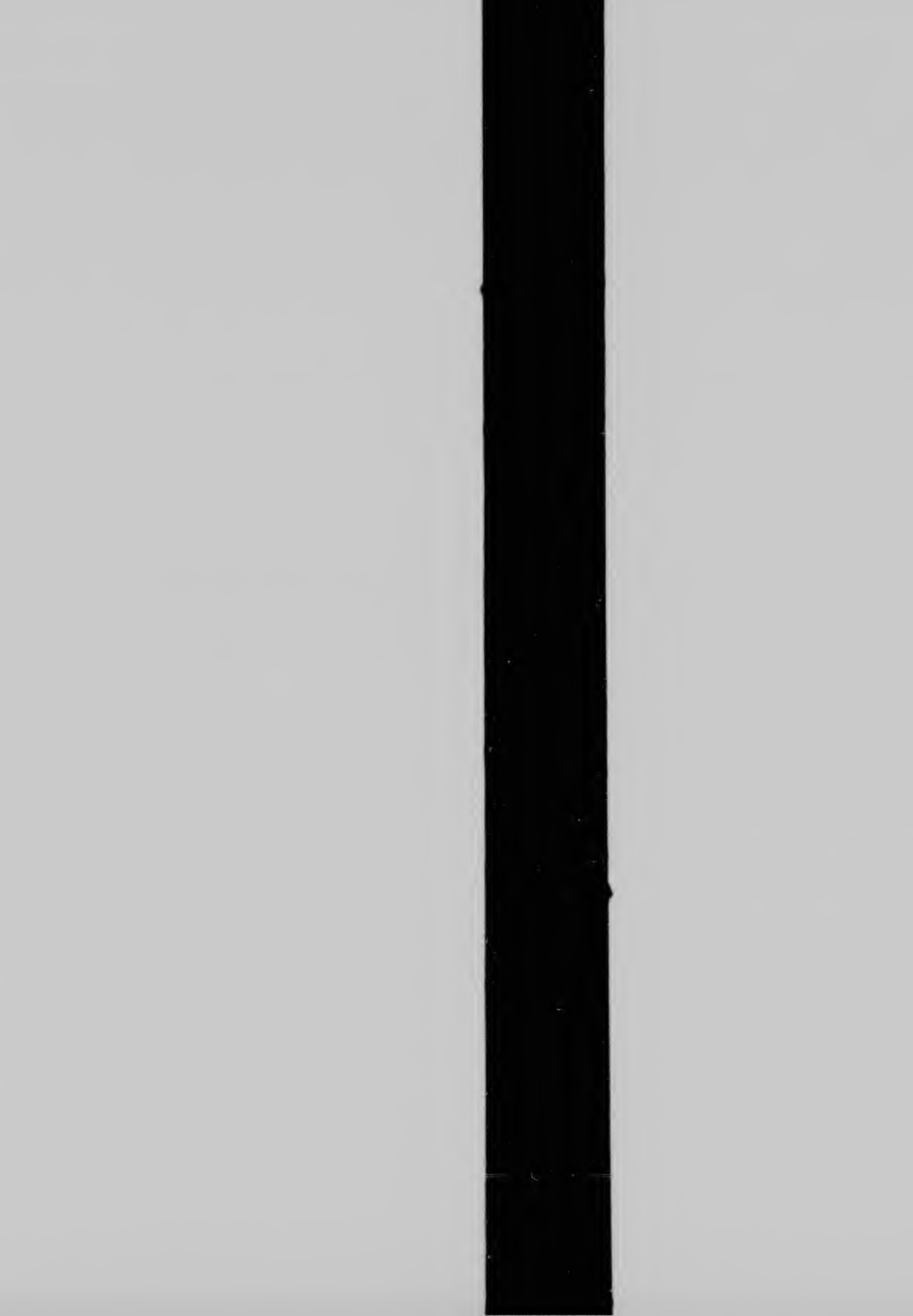
ed by errata  
ilmed to  
ement  
a une pelure  
e facon a  
le



o be  
l  
t to  
s  
the

filmés à des taux de réduction différents.  
Lorsque le document est trop grand pour être reproduit en un seul cliché, il est filmé à partir de l'angle supérieur gauche, de gauche à droite et de haut en bas, en prenant le nombre d'images nécessaire. Les diagrammes suivants illustrent la méthode







full confidence in the wisdom and virtue of the President whom, in conjunction with the Senate, the decision morally belongs."

The resolution being handed to the chair, was read for information, and the question was put upon it. There were not many who opposed it; but there was so much doubt to pronounce with certainty where the majority

A proposition in the course of the meeting was made to be appointed to report a list of resolutions to be submitted at 12 o'clock at the same place, expressive of the opinions of the members of the meeting.

A member (not thro' the medium of the Chair) then proposed a committee of whom the subject should be referred to report at the time and place above mentioned. There were Mr. B. Livingston, Mr. I. Calton, Col. H. M. A. V. Cook, Mr. J. P. Livingston, Mr. Jno. Brodway, Mr. Denning, Mr. Osgood, Mr. Giffon, Mr. Fowler and Mr. Gordon Munford. For each of the names a vote: but the vote was so considerable that it was in certainty, whether this proceeding was clearly un-

A motion for an adjournment, to meet at the same place at 12 o'clock was then made; and an adjournment, there-

W,

NEW YORK, July 18, 1795.



President of the United States,  
decision of the question contin-

was read though not without in-

There were many who advocat-  
so much disorder that it was dir-  
majority lay.

It was made, that a committee should  
be submitted on Monday next, at  
the opinions of the Citizens on the

Chair) then named fifteen citizens

referred, and who should be re-

mentioned. The persons named

Col. H. Rogers, Mr. E. Nixon,

Mr. Broome, Mr. Simpson, Mr. El-

son, Mr. W. W. Gilbert, Mr. J.

Each of these gentlemen there were

able that it is hard to pronounce,  
fully understood by the meeting

at the same place on Monday next at

at, thirteen, took place.

W. S. SMITH, Chairman.

