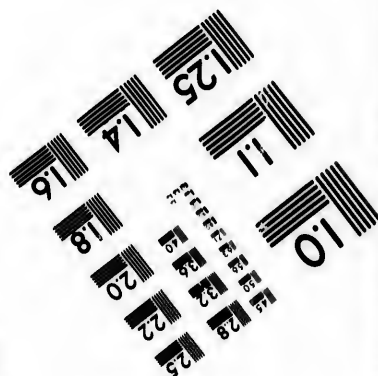
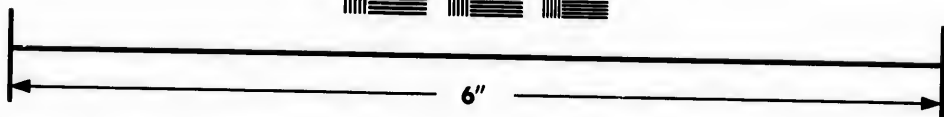
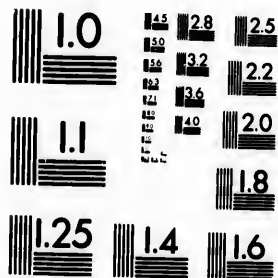


**IMAGE EVALUATION
TEST TARGET (MT-3)**



**Photographic
Sciences
Corporation**

23 WEST MAIN STREET
WEBSTER, N.Y. 14580
(716) 872-4503

1.5 1.8 2.0 2.2 2.5
2.8 3.2 3.6 4.0

**CIHM/ICMH
Microfiche
Series.**

**CIHM/ICMH
Collection de
microfiches.**



Canadian Institute for Historical Microreproductions / Institut canadien de microreproductions historiques

© 1987

1.0

Technical and Bibliographic Notes/Notes techniques et bibliographiques

The Institute has attempted to obtain the best original copy available for filming. Features of this copy which may be bibliographically unique, which may alter any of the images in the reproduction, or which may significantly change the usual method of filming, are checked below.

L'Institut a microfilmé le meilleur exemplaire qu'il lui a été possible de se procurer. Les détails de cet exemplaire qui sont peut-être uniques du point de vue bibliographique, qui peuvent modifier une image reproduite, ou qui peuvent exiger une modification dans la méthode normale de filmage sont indiqués ci-dessous.

- Coloured covers/
Couverture de couleur
- Covers damaged/
Couverture endommagée
- Covers restored and/or laminated/
Couverture restaurée et/ou pelliculée
- Cover title missing/
Le titre de couverture manque
- Coloured maps/
Cartes géographiques en couleur
- Coloured ink (i.e. other than blue or black)/
Encre de couleur (i.e. autre que bleue ou noire)
- Coloured plates and/or illustrations/
Planches et/ou illustrations en couleur
- Bound with other material/
Relié avec d'autres documents
- Tight binding may cause shadows or distortion
along interior margin/
La reliure serrée peut causer de l'ombre ou de la
distorsion le long de la marge intérieure
- Blank leaves added during restoration may
appear within the text. Whenever possible, these
have been omitted from filming/
Il se peut que certaines pages blanches ajoutées
lors d'une restauration apparaissent dans le texte,
mais, lorsque cela était possible, ces pages n'ont
pas été filmées.
- Additional comments:/
Commentaires supplémentaires:

- Coloured pages/
Pages de couleur
- Pages damaged/
Pages endommagées
- Pages restored and/or laminated/
Pages restaurées et/ou pelliculées
- Pages discoloured, stained or foxed/
Pages décolorées, tachetées ou piquées
- Pages detached/
Pages détachées
- Showthrough/
Transparence
- Quality of print varies/
Qualité inégale de l'impression
- Includes supplementary material/
Comprend du matériel supplémentaire
- Only edition available/
Seule édition disponible
- Pages wholly or partially obscured by errata
slips, tissues, etc., have been refilmed to
ensure the best possible image/
Les pages totalement ou partiellement
obscurcies par un feuillet d'errata, une pelure,
etc., ont été filmées à nouveau de façon à
obtenir la meilleure image possible.

This item is filmed at the reduction ratio checked below/
Ce document est filmé au taux de réduction indiqué ci-dessous.

10X	12X	14X	16X	18X	20X	22X	24X	26X	28X	30X	32X
						/					

The copy filmed here has been reproduced thanks to the generosity of:

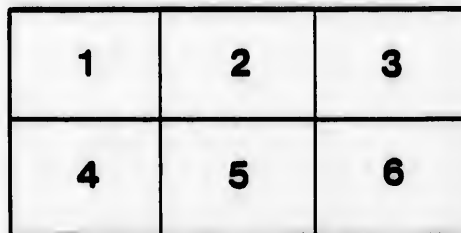
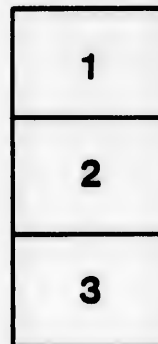
Library of Parliament and the
National Library of Canada.

The images appearing here are the best quality possible considering the condition and legibility of the original copy and in keeping with the filming contract specifications.

Original copies in printed paper covers are filmed beginning with the front cover and ending on the last page with a printed or illustrated impression, or the back cover when appropriate. All other original copies are filmed beginning on the first page with a printed or illustrated impression, and ending on the last page with a printed or illustrated impression.

The last recorded frame on each microfiche shall contain the symbol \rightarrow (meaning "CONTINUED"), or the symbol ∇ (meaning "END"), whichever applies.

Maps, plates, charts, etc., may be filmed at different reduction ratios. Those too large to be entirely included in one exposure are filmed beginning in the upper left hand corner, left to right and top to bottom, as many frames as required. The following diagrams illustrate the method:



L'exemplaire filmé fut reproduit grâce à la générosité de:

La Bibliothèque du Parlement et la
Bibliothèque nationale du Canada.

Les images suivantes ont été reproduites avec le plus grand soin, compte tenu de la condition et de la netteté de l'exemplaire filmé, et en conformité avec les conditions du contrat de filmage.

Les exemplaires originaux dont la couverture en papier est imprimée sont filmés en commençant par le premier plat et en terminant soit par la dernière page qui comporte une empreinte d'impression ou d'illustration, soit par le second plat, selon le cas. Tous les autres exemplaires originaux sont filmés en commençant par la première page qui comporte une empreinte d'impression ou d'illustration et en terminant par la dernière page qui comporte une telle empreinte.

Un des symboles suivants apparaîtra sur la dernière image de chaque microfiche, selon le cas: le symbole \rightarrow signifie "A SUIVRE", le symbole ∇ signifie "FIN".

Les cartes, planches, tableaux, etc., peuvent être filmés à des taux de réduction différents. Lorsque le document est trop grand pour être reproduit en un seul cliché, il est filmé à partir de l'angle supérieur gauche, de gauche à droite, et de haut en bas, en prenant le nombre d'images nécessaire. Les diagrammes suivants illustrent la méthode.

12

BRITISH ASSOCIATION FOR THE ADVANCEMENT OF SCIENCE,
MONTREAL MEETING,
August 27th to September 3rd, 1884.

ENQUIRIES

RESPECTING

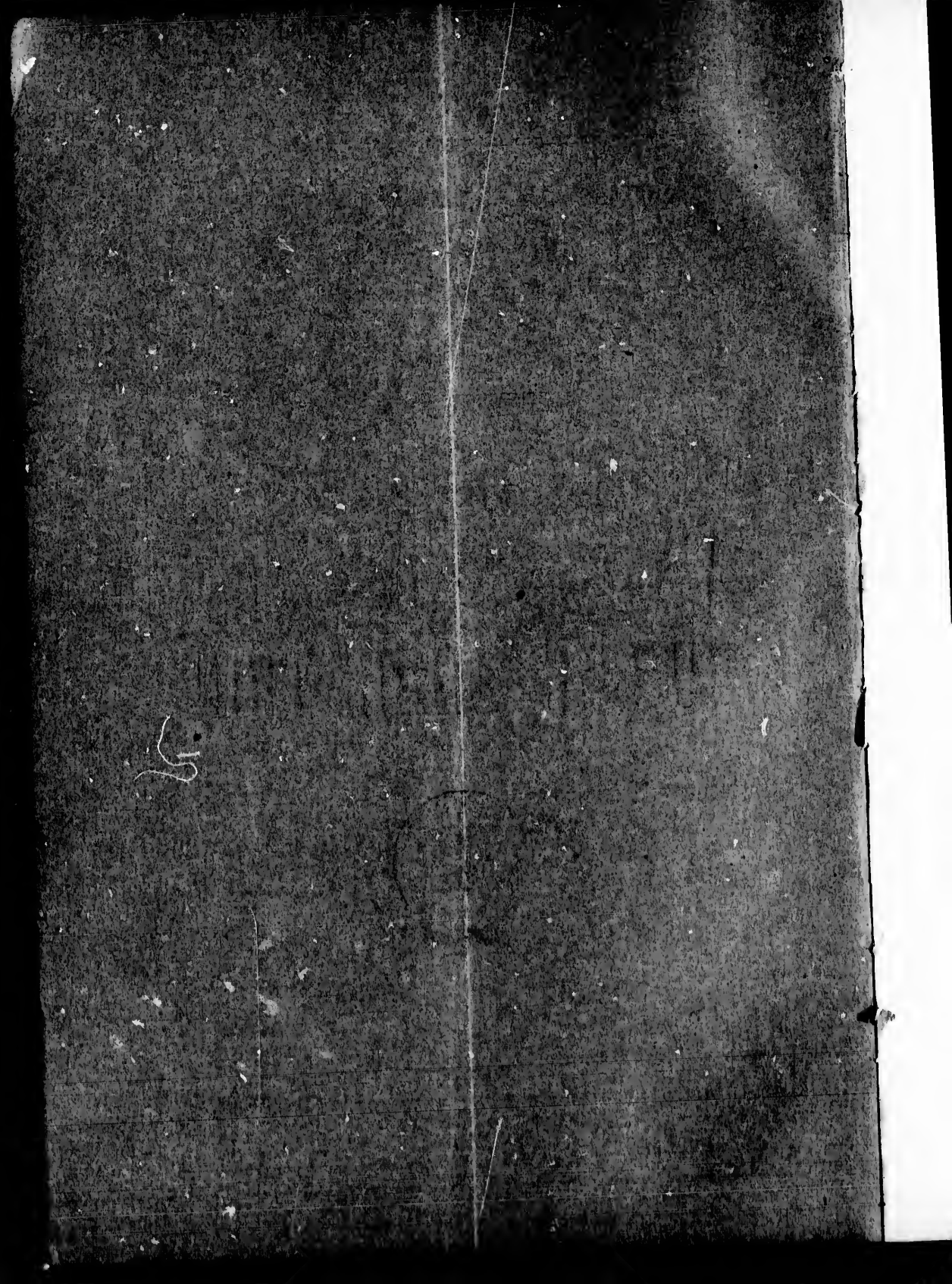
PUBLIC EDUCATION.



Montreal:

PRINTED BY J. THEO. ROBINSON, 62 ST. FRANCOIS XAVIER STREET.

1884.



BRITISH ASSOCIATION FOR THE ADVANCEMENT OF SCIENCE,

MONTREAL MEETING,

August 27th to September 3rd, 1884.

ENQUIRIES

RESPECTING

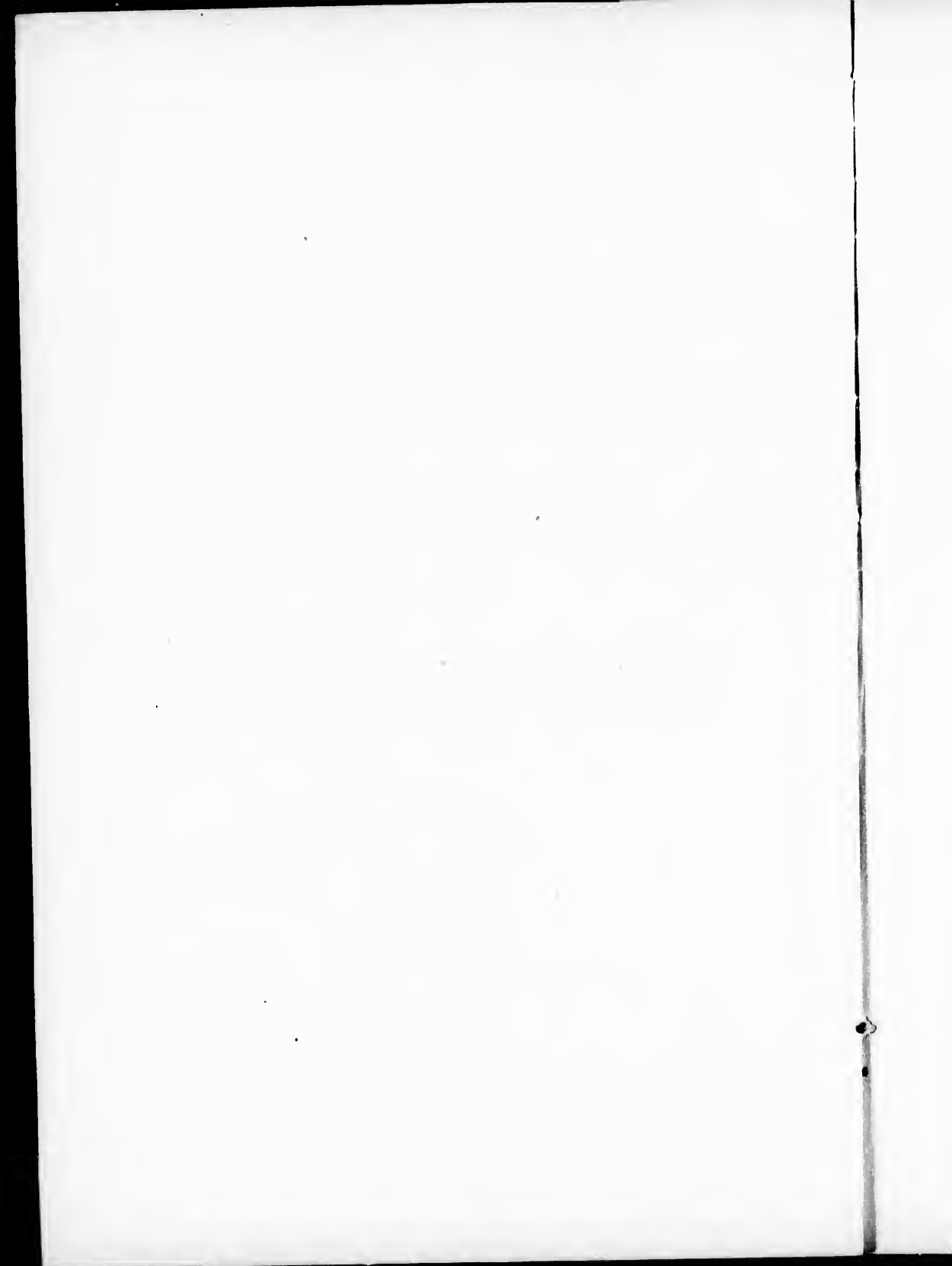
PUBLIC EDUCATION.



Montreal :

PRINTED BY J. THEO. ROBINSON, 62 ST. FRANCOIS XAVIER STREET.

—
1884.



**BRITISH ASSOCIATION FOR THE
ADVANCEMENT OF SCIENCE.**

The Committee entrusted with arrangements for the meeting of this Association in Montreal, having appointed a sub-committee to collect information respecting the state of Education in the Provinces of the Dominion of Canada, it is requested that all persons interested in Education, to whom this Circular may come, will furnish as far as in their power, information on all points touching the subject, and specially touching the points enumerated in the accompanying Scheme; and will address communications embodying all such information to Professor J. Clark Murray, LL.D., 111 Mackay Street, Montreal, as soon as convenient. Authoritative and illustrative documents and pamphlets will be of great service.

(A.) History of Public Education.

I. What efforts, ecclesiastical or charitable, directed to the same end, preceded the establishment of public schools ?

II. At what date was a public school law first enacted ?

III. What were the leading provisions of that law ?

IV. What important changes were made in the provisions of that law ? and at what dates ?

V. At what date did public school provision assume its present form in your province ?

(B.) Present Organization of the School System of your Province.

I. (1) Chief administrator of the School System ? (2) The mode of his appointment ? (3) his functions ? (4) his title ? (5) his name ?

II. (1) Any council or committee exercising controlling or co-ordinate power with the chief officer ? (2) its mode of appointment ? (3) its functions ? (4) its title.

III. (1) School Inspectors ? (2) their grades ? (3) their mode of appointment ? (4) their qualifications ? (5) their functions ?

IV. (1) Grades of schools recognized by law ? (2) how distinguished from and how related to each other ?

V. (1) Territorial divisions for school purposes ? (2) how determined ? (3) average area ? (4) Local governing bodies ? (5) names ? (6) how chosen or appointed ? (7) powers as to taxation ? (8) as to erection of school houses ? (9) as to engagement of teachers ? (10) as to government of schools ?

VI. Is there any provision made for compulsory attendance at schools ? If so, what is its nature ?

(C.) Teachers.

I. (1) Grades of teachers ? (2) qualifications of each grade ? (3) examinations ? (4) privileges of each grade ?

II. (1) Provision for training teachers by institutes and by Normal Schools ? (2) Institutes ? (3) what legal provision if any ? (4) where held ? (5) at what times ? (6) what exercises ? (7) under whose direction ?

III. (1) Normal Schools ? (2) names ? (3) locations ? (4) qualifications for admission ? (5) bursaries or other aids to students ? (6) length of course ? (7) number of instructors ? (8) character of instruction ? (9) provision for training as distinct from instruction ? (10) grades of diplomas ? (11) examinations

for diplomas ? (12) on what subjects ? (13) by whom conducted ? (14) privileges of holders of Normal School diplomas ?

(D.) Statistics of School Attendance.

N. B.—Please answer for each grade of school, and for dissentient or separate schools separately.

I. (1) Total population of the province ? (2) number of schools ? (3) male teachers ? (4) female teachers ? (5) male pupils ? (6) female pupils ?

II. (1) Average days of attendance per annum for each male pupil ? (2) each female pupil ? (3) average age at which male and female pupils respectively enter school ? (4) leave school ? (5) length of school-course as provided ?

III. Average number of pupils who annually leave school able at least to read fluently and with intelligence, to write a letter legibly and correctly, and to solve easy questions in the simple and compound rules of arithmetic, fractions and interest ?

IV. (1) Average number of pupils who annually leave schools of superior grade ready for matriculation at a university ? (2) number who do so matriculate annually ?

(E.) Annual Revenue of Schools of each Grade.

I. (1) Amount of subvention from the Provincial Exchequer ? (2) how distributed ?

II. (1) Amount raised by local taxation ? (2) how and by whom levied ?

III. (1) Amount of school fees ? (2) how and by whom determined and collected ?

IV. Other resources ? amounts and kinds ?

V. (1) Amount of expenditure of schools of each grade ? (2) Cost of governmental administration ? (3) of local administration ? (4) amount of teachers' salaries ? (5) of all other expenses ?

(F.) Typical Schools.

It will add much to the value of this report if descriptions of typical schools of each grade, situated some in town and some in country, be added, information as to the following points being given :—

I. THE SCHOOL PROPERTY.

(1) Area of playgrounds ? (2) cubical contents of building ? (3) number of rooms devoted to teaching ? (4) average cubical contents of these rooms ? (5) provision for lighting ? (6) provision for heating ? (7) provision for ventilation ? (8) provision for seating pupils ? (9) sanitary provision ? (10) value of land ? (11) cost of erections ? (12) of furniture ? (13) of library ? (14) of apparatus ?

II. ITS REVENUE.

(1) From provincial subvention ? (2) from local taxation ? (3) from school fees ? (4) from all other sources ?

III. ITS EXPENDITURE.

(1) For teachers' salaries? (2) for books and stationery? (3) for all other expenses?

IV. ITS TEACHERS.

(1) The organization of the staff? (2) number of male teachers? (3) of female teachers? (4) their grades of diploma? (5) maximum salary? (6) minimum salary? (7) provision for promotion?

V. ITS PUPILS AND ITS WORK.

(1) Number of boys? (2) of girls? (3) number of grades in the school? (4) average age of pupils in each grade? (5) requirements for entering each grade? (6) acquirements on leaving the last grade.

NOTE.—To your report add any facts of interest at your command bearing on the educational history of your province, on the diffusion of intelligence among the people, and on the morality of the people. In this connection such facts as the total circulation of your provincial newspapers, the number of letters annually posted, the amount of church provision, the numbers of your clergy, the average number of persons in gaols and penitentiaries, illiteracy of prisoners and the proportionate numbers of persons who sign records of births, marriages and deaths with a cross will be of very great value.

It is also desirable to know to what extent public provision for education is at present supplemented by private enterprise, and by ecclesiastical provision for education. Be so good as to add such information as may be accessible in respect to private and church schools and Sunday schools.

and

oer
eir
ni-

of
in
ch
e.

our
ce,
the
the
c of
the
in
ro-
hs,
ue.

ro-
ate
Be
in

