

Nwp  
971.1Na  
N175h

# The Hub



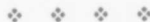
OF VANCOUVER  
ISLAND, BRITISH  
COLUMBIA, 1910

# NANAIMO

## BY WAY OF INTRODUCTION

KNOW ALL MEN TO WHOM THESE PRESENTS MAY COME : that this little volume is issued by authority of the Citizens' League of the city of Nanaimo, Vancouver Island, British Columbia, in order that the advantages and possibilities of a most substantial and promising city may not be overlooked by investors and home-seekers. Its people are proud of their city and the homes they have carved within its confines; they are satisfied with its climatic and healthful conditions, and, in general are as happy and contented as any people.

However, they need company, and they need help, and hence, in common with all live communities throughout the West, would present an appeal to all who are interested to read their petition, and if satisfied with what is offered, to settle and co-operate with these people in the great development of this city and district.



**HOW TO REACH NANAIMO** NANAIMO is the nearest point on Vancouver Island to Vancouver city, less than forty miles away, the trip being made back and forth every day by one of the C. P. R. Ferry Steamers. The route between Vancouver and Nanaimo is so direct and the entrance to the harbor so ample that this trip is made every day, rain or shine, in calm and stormy weather or wheather it should be clear or foggy. Not once during the past twenty years has the daily trip be-



THE CHILDREN ARE AFFORDED AMPLE OPPORTUNITY FOR EDUCATION.



THE PAYROLL OF NANAIMO AVERAGES ABOUT \$250,000.00 PER MONTH

tween Nanaimo and Vancouver been interrupted because of the weather conditions and the conditions of travel are so safe that no accident has ever occurred. Travellers en route to any part of Vancouver Island will find the route between Nanaimo and Vancouver the safest, quickest and most agreeable passage of any, and from Nanaimo, any part of the Island can be reached by railways which are now running North, South and West.

A vigorous policy of development has been adopted by the C. P. R. management. A new line from Nanaimo to Alberni, a distance of 57 miles will be completed this year and another line is in course of construction from Nanaimo to Comox and Campbell River which will make a further extension of over 70 miles.



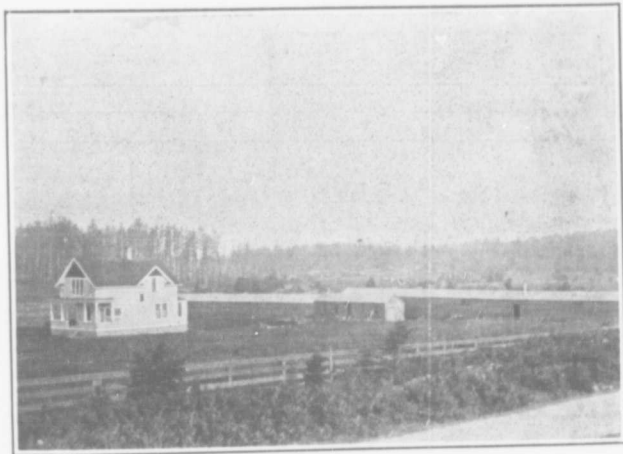
NANAIMO HARBOR WHERE THE WORLD'S GREATEST SHIPS CAN ENTER

THE CITY WATER IS SOFT, COLD, REFRESHING AND FIT FOR THE GODS

## FARMING ALL THE YEAR ROUND

TO the seeker of broad and fertile plains, we can offer small encouragement, for our lands are mainly stump and tree clad and requires time and money to convert them into very extensive green-clad fields: therefore the man we are looking to interest in this branch of development is the Eastern farmer with from \$800 to \$3000 who is looking for an opening

for diversified farming in a good climate and in a country where he can build a permanent home and feel sure of a comfortable living and the prospects of bettering his condition as years go by. The cost of land in the vicinity of Nanaimo is reasonable; from \$60 to \$100 per acre for rough land from \$100 to \$300 acre for cultivated land



A FIVE ACRE CHICKEN RANCH NEAR NANAIMO



THE SOIL THAT GROWS THE BIG TREES WILL ALSO GROW THE BIG SPUDS



OVER SIXTY PER CENT of the houses in Nanaimo are owned by the occupants. Property, especially residential, can be had at very reasonable figures.

WATCH  
NANAIMO  
GROW



THE SECRETARY OF THE CITIZENS' LEAGUE is at your service. He is an encyclopedia of knowledge regarding the city and district, and is paid to convey information to all interested parties.

WRITE TO-DAY

NANAIMO is a charming little city of some 10000 inhabitants, nestling around one of the prettiest harbors on the Pacific Coast. Settled in 1852, being one of the oldest towns in British Columbia, where her main streets as now, followed the deer trail of the virgin forest, the city still has a suggestion of the Arcadian touch to justify the adjective used "old fashioned." Differing from other cities of "the last West," the city is not glaringly new. It has all the the quaintness of an old new England sea port, and yet it teems with the hustle and bustle that denotes the activities of a Western town.

The year 1910 has marked the turning point in Nanaimo's history from what might be termed a "one horse town" to a large, prosperous and beautiful city, and the city council and Citizen's League are working together with this aim in view. A complete sewerage

system is now being installed, and when the work on sidewalks is completed every foot of walk in the city will be concrete. In addition to this, and the most important feature in the city's development, is the fact that a tram system operating throughout the principal streets of the city and connecting the suburban districts, will in all probability be in operation within a year.

The city is famous as the location of the largest coal mines on the Pacific Coast, and yet one could live in the place for years and unless they were told there were coal mines underneath, they would never know it. There is no suggestion of the usual earo arks that go with a coal mining town, no coal dust, no unsightly "works," no untidy reminders of the great industry that flourishes in the city.

THE "HUB OF THE ISLAND." FROM NANAIMO ANY POINT ON VANCOUVER ISLAND CAN BE REACHED BY TRAIN, STEAMER AND AUTOMOBILE



TAXES ARE MODERATE. BUILDINGS AND IMPROVEMENTS ARE EXEMPT



## NANAIMO HERRING FISHERIES

NANAIMO harbor and the adjacent waters is yearly the scene of the most remarkable herring run on the Pacific Coast. For several months in the year, the waters fairly teem with herring, and the growth of the industry has been very rapid during the past four years. In 1905-6 but six firms were engaged in the business with a total capital invested of \$9000 and employing 159 men. On the opening of the season of 1909-10, forty-three firms were ready to commence operations on a scale never before attempted. Over 1500 men were employed and the quantity of fish caught amounted to no less than 56,000,000 pounds or 28,000 tons an increase over that of the 13,000,000 pounds, and water mark output in fishing industry in Nanaimo at present time is estimated constructing a saltery is the driving of piles, etc. Add to this the boats, launches and average cost of a camp total for the forty-three



THE GAMEY TROUT ARE PLENTIFUL

previous year of over constituting the high-the history of the herring aimo waters. The am-in the industry at the at \$250,000. The cost of placed at \$3000, includ-cost of lumber, tanks, cost of seines, fishing scows, salt, and the is placed at \$,000, a camps of \$215,000.

In addition to the herring fisheries, salmon, cod, crabs and clams are quite plentiful, Salmon trolling being a popular sport of Nanaimoites. The quality and flavor of clams canned by the Nanaimo Canning Company is unsurpassed.

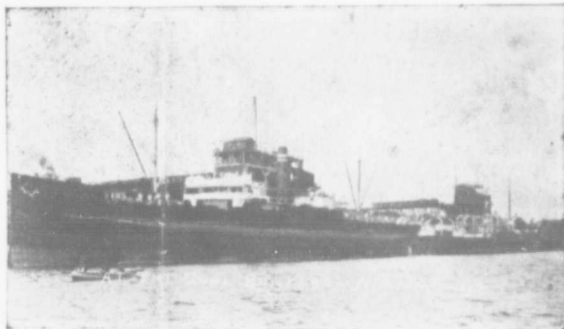


THE RAINFALL AVERAGES 40 INCHES—ABOUT HALF THAT OF VANCOUVER



## AS A LOCATION FOR INDUSTRIES

THE central location of Nanaimo, from which every part of the Island can be reached so easily, makes it a most desirable point for the establishment of all kinds of factories and warehouses for the distribution of supplies. Manufacturers and wholesale men who are looking for a place to establish themselves on the British Columbia Pacific Coast will find Nanaimo a most desirable place and with every facility both for receiving their raw material and for distributing their finished goods. Nanaimo enjoys the same terminal rates as Vancouver and Victoria, giving a deferential at least of \$4 per ton. Fuel is very cheap both wood and coal being produced in immense quantities and being shipped to



OCEAN LINERS TAKING ON COAL

all parts of the world. A splendid water supply system is owned by the city and water is supplied to manufacturers at very low rates. A new brick plant is being installed by the Red Cliff Brick & Tile Co., Ltd. with a capital of \$150,000.



TEN ACRES OF LAND INTELLIGENTLY HANDLED WILL SUPPORT THE FAMILY



NWP  
ATTN: A  
NIM SH

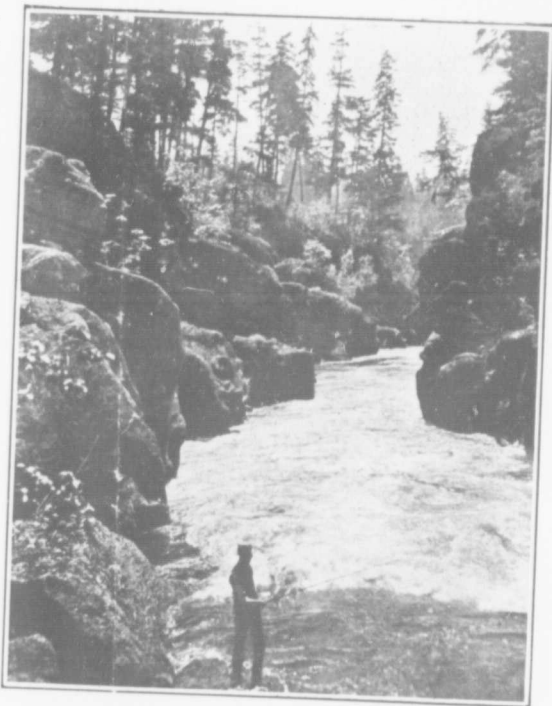
卐 THE SPORTSMAN'S PARADISE, BIRDS, DEER, TROUT AND BIG SALMON ARE PLENTIFUL 卐

FROM the sportman's viewpoint, Nanaimo offers an unlimited field for operation. Fishing and shooting of all kinds from the smallest to the largest game in all departments is supplied by Nature and during the season many bags are secured by local sportsmen and visitors who are coming in ever increasing numbers to enjoy the unrivaled advantages offered for all kinds of out-door sports and enjoyments.



WRITE today for literature on Nanaimo. Ask any questions.

H. R. HICKLING,  
Secretary Citizens' League,  
NANAIMO, B. C.



NANAIMO RIVER CAN FURNISH AN ABUNDANCE OF WATER POWER

卐 THE CLIMATE OF NANAIMO KEEPS DOWN THE DOCTOR'S BILL. 卐



Compiled and Printed by  
GEORGE A. BEATTIE  
Nanaimo, B. C.



Photos by Joyner.