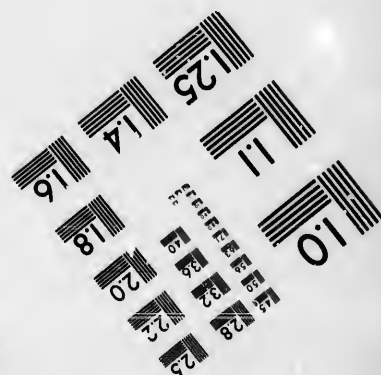
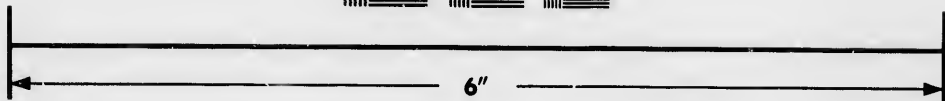
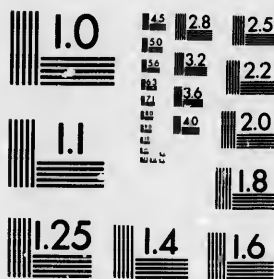


**IMAGE EVALUATION
TEST TARGET (MT-3)**



**Photographic
Sciences
Corporation**

23 WEST MAIN STREET
WEBSTER, N.Y. 14580
(716) 872-4503

**CIHM/ICMH
Microfiche
Series.**

**CIHM/ICMH
Collection de
microfiches.**



Canadian Institute for Historical Microreproductions / Institut canadien de microreproductions historiques

© 1987

Technical and Bibliographic Notes/Notes techniques et bibliographiques

The Institute has attempted to obtain the best original copy available for filming. Features of this copy which may be bibliographically unique, which may alter any of the images in the reproduction, or which may significantly change the usual method of filming, are checked below.

L'Institut a microfilmé le meilleur exemplaire qu'il lui a été possible de se procurer. Les détails de cet exemplaire qui sont peut-être uniques du point de vue bibliographique, qui peuvent modifier une image reproduite, ou qui peuvent exiger une modification dans la méthode normale de filmage sont indiqués ci-dessous.

- | | |
|--|--|
| <input type="checkbox"/> Coloured covers/
Couverture de couleur | <input type="checkbox"/> Coloured pages/
Pages de couleur |
| <input type="checkbox"/> Covers damaged/
Couverture endommagée | <input type="checkbox"/> Pages damaged/
Pages endommagées |
| <input type="checkbox"/> Covers restored and/or laminated/
Couverture restaurée et/ou pelliculée | <input type="checkbox"/> Pages restored and/or laminated/
Pages restaurées et/ou pelliculées |
| <input type="checkbox"/> Cover title missing/
Le titre de couverture manque | <input checked="" type="checkbox"/> Pages discoloured, stained or foxed/
Pages décolorées, tachetées ou piquées |
| <input type="checkbox"/> Coloured maps/
Cartes géographiques en couleur | <input type="checkbox"/> Pages detached/
Pages détachées |
| <input type="checkbox"/> Coloured ink (i.e. other than blue or black)/
Encre de couleur (i.e. autre que bleue ou noire) | <input checked="" type="checkbox"/> Showthrough/
Transparence |
| <input type="checkbox"/> Coloured plates and/or illustrations/
Planches et/ou illustrations en couleur | <input type="checkbox"/> Quality of print varies/
Qualité inégale de l'impression |
| <input type="checkbox"/> Bound with other material/
Rlié avec d'autres documents | <input type="checkbox"/> Includes supplementary material/
Comprend du matériel supplémentaire |
| <input type="checkbox"/> Tight binding may cause shadows or distortion
along interior margin/
La reliure serrée peut causer de l'ombre ou de la
distorsion le long de la marge intérieure | <input type="checkbox"/> Only edition available/
Seule édition disponible |
| <input type="checkbox"/> Blank leaves added during restoration may
appear within the text. Whenever possible, these
have been omitted from filming/
Il se peut que certaines pages blanches ajoutées
lors d'une restauration apparaissent dans le texte,
mais, lorsque cela était possible, ces pages n'ont
pas été filmées. | <input type="checkbox"/> Pages wholly or partially obscured by errata
slips, tissues, etc., have been refilmed to
ensure the best possible image/
Les pages totalement ou partiellement
obscurcies par un feuillet d'errata, une pelure,
etc., ont été filmées à nouveau de façon à
obtenir la meilleure image possible. |
| <input checked="" type="checkbox"/> Additional comments: / [Printed ephemera] [2] p.
Commentaires supplémentaires: | |

This item is filmed at the reduction ratio checked below/
Ce document est filmé au taux de réduction indiqué ci-dessous.

10X	12X	14X	16X	18X	20X	22X	24X	26X	28X	30X	32X
						✓					

The copy filmed here has been reproduced thanks to the generosity of:

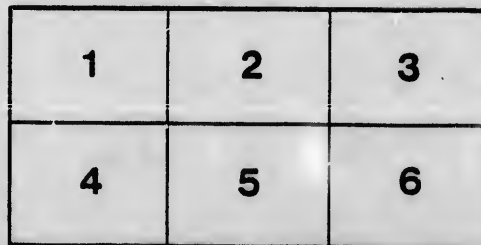
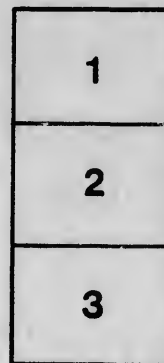
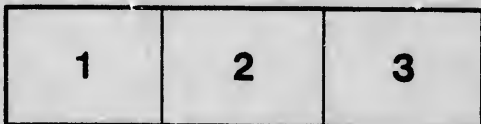
D. B. Weldon Library
University of Western Ontario
(Regional History Room)

The images appearing here are the best quality possible considering the condition and legibility of the original copy and in keeping with the filming contract specifications.

Original copies in printed paper covers are filmed beginning with the front cover and ending on the last page with a printed or illustrated impression, or the back cover when appropriate. All other original copies are filmed beginning on the first page with a printed or illustrated impression, and ending on the last page with a printed or illustrated impression.

The last recorded frame on each microfiche shall contain the symbol \rightarrow (meaning "CONTINUED"), or the symbol ∇ (meaning "END"), whichever applies.

Maps, plates, charts, etc., may be filmed at different reduction ratios. Those too large to be entirely included in one exposure are filmed beginning in the upper left hand corner, left to right end top to bottom, as many frames as required. The following diagrams illustrate the method:



L'exemplaire filmé fut reproduit grâce à la générosité de:

D. B. Weldon Library
University of Western Ontario
(Regional History Room)

Les images suivantes ont été reproduites avec le plus grand soin, compte tenu de la condition et de la netteté de l'exemplaire filmé, et en conformité avec les conditions du contrat de filmage.

Les exemplaires originaux dont la couverture en papier est imprimée sont filmés en commençant par la première page et en terminant soit par la dernière page qui comporte une empreinte d'impression ou d'illustration, soit par le second plat, selon le cas. Tous les autres exemplaires originaux sont filmés en commençant par la première page qui comporte une empreinte d'impression ou d'illustration et en terminant par la dernière page qui comporte une telle empreinte.

Un des symboles suivants apparaît sur la dernière image de chaque microfiche, selon le cas: le symbole \rightarrow signifie "A SUIVRE", le symbole ∇ signifie "FIN".

Les cartes, planches, tableaux, etc., peuvent être filmés à des taux de réduction différents. Lorsque le document est trop grand pour être reproduit en un seul cliché, il est filmé à partir de l'angle supérieur gauche, de gauche à droite, et de haut en bas, en prenant le nombre d'images nécessaire. Les diagrammes suivants illustrent la méthode.

TRAVELLING EXPENSES AND CAB HIRE.

HOW MINISTERS GO JUNKETING AT THE PUBLIC'S COST.

To be a Tory and a member of a Tory Ministry is about the happiest lot in the world. Witness the annexed extracts from the Public Accounts and Auditor General's Report since the present Government assumed office in 1878.

The Travelling Expenses and Cab Hire for Ministers and their friends have cost \$194,884.

Let any one figure this out and he will find that it amounts to just Five Dollars every fifteen minutes, which the people of Canada pay for Ministers' pleasure trips;

Travelling Expenses and Cab Hire for seven years.....	\$194,884 00
Average for one year	\$27,840 00
" " one month (twenty-six working days).....	\$2,320 00
" " one day (ten working hours).....	\$89 00
" " one hour	\$8 90

Nearly Nine Dollars spent every hour by these men driving about enjoying themselves! How do the Taxpayers of Canada like that? Don't you wish you were Tory members of a Boodle Cabinet?

The following detailed statement shows the several departments and heads under which this extravagant luxury appears for the past two years. It must be observed that this statement does not include expenditure incurred subsequent to June, 1885. Since that date Sir John Macdonald, Sir A. P. Caron, Sir David Macpherson, Sir Alexander Campbell, Sir Leonard Tilley, and Sir Charles Tupper have made knight arrant trips to England. Other members of the Cabinet went on excursions to British Columbia and the North-West.

	1884.	1885.	In two years.
Changes of Management.....	\$2,484	\$2,615	\$5,099
Governor-General's office.....	5,831	5,961	11,792
Privy Council.....	1,624	1,375	2,999
Justice.....	1,919	2,739	4,658
Militia and Defence.....	917	1,244	2,161
Secretary of State.....	901	934	1,835
Interior.....	2,354	2,931	5,285
Auditor-General's office.....	57	77	134
Customs.....	4	362	366
Finances.....	710	443	1,153
Inland Revenue.....	1,823	663	2,486
Public Works.....	628	686	1,314
Railway and Canals.....	127		127
Agriculture.....	10	32	42
Post office.....	1,410	963	2,393
Marine and Fisheries.....	1,762	891	2,653
Miscellaneous.....	1,946	2,660	4,626
C. P. R. (Capital Account).....	2,380		2,380
Immigration.....	3,105	723	3,828
High Commissioner.....	1,186		1,186
Dominion Lands.....	1,476		1,476
Railways (Income Account).....	3,121	3,751	6,872
	\$35,775	\$29,090	\$64,865

Below is a detailed abstract of the cost of supplies for the creature comforts of Sir Alexander Campbell as he went jogging along to British Columbia in the official car "Cumberland." See Auditor-General's Report, 1884, page 110, part II.

Canada Pacific Railway Supplies for official car "Cumberland".....	\$782 25
Porter of official car services and supplies.....	235 25
Porter.....	499 05
Electric apparatus.....	40 00
Two new wheels.....	37 65
Painting.....	100 79
Springs for wheels.....	56 01
Carpets.....	55 82
Dry Goods.....	58 83
Hardware.....	30 45
Fittings.....	385 00
China.....	51 50
Repairs.....	21 83
Uniform for Conductor.....	22 00
Conductors Cap.....	5 75
	\$2,381 78

The Emperor of Russia, could not travel in more gorgeous state than that. Think of it! Labouring men work a whole day for a dollar, and Ministers spend dollars an hour travelling for their own pleasure. It is for the Electors to say if they regard this as a proper expenditure of their money.

