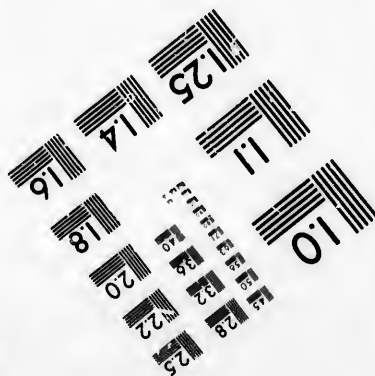
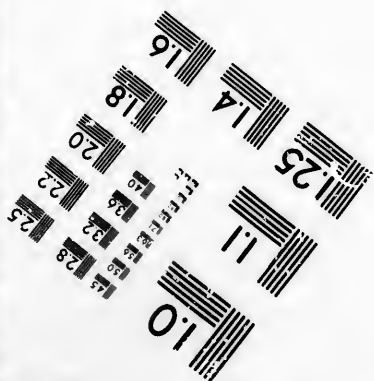
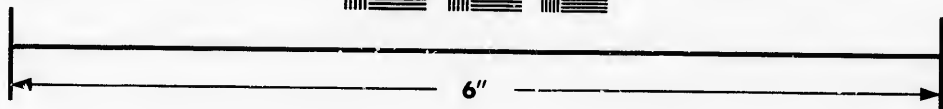
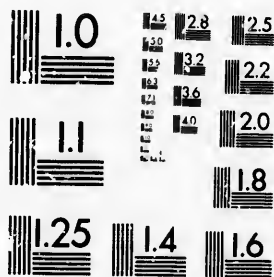


**IMAGE EVALUATION  
TEST TARGET (MT-3)**



**Photographic  
Sciences  
Corporation**

23 WEST MAIN STREET  
WEBSTER, N.Y. 14580  
(716) 872-4503

1.4 1.6 1.8 2.0 2.2 2.5 2.8 3.2 3.6

**CIHM/ICMH  
Microfiche  
Series.**

**CIHM/ICMH  
Collection de  
microfiches.**



**Canadian Institute for Historical Microreproductions / Institut canadien de microreproductions historiques**

1.0

**© 1981**

Technical and Bibliographic Notes/Notes techniques et bibliographiques

The Institute has attempted to obtain the best original copy available for filming. Features of this copy which may be bibliographically unique, which may alter any of the images in the reproduction, or which may significantly change the usual method of filming, are checked below.

L'Institut a microfilmé le meilleur exemplaire qu'il lui a été possible de se procurer. Les détails de cet exemplaire qui sont peut-être uniques du point de vue bibliographique, qui peuvent modifier une image reproduite, ou qui peuvent exiger une modification dans la méthode normale de filmage sont indiqués ci-dessous.

- |   |  |
|---|--|
| <input type="checkbox"/> Coloured covers/<br>Couverture de couleur  | <input type="checkbox"/> Coloured pages/<br>Pages de couleur   |
| <input type="checkbox"/> Covers damaged/<br>Couverture endommagée   | <input type="checkbox"/> Pages damaged/<br>Pages endommagées   |
| <input type="checkbox"/> Covers restored and/or laminated/<br>Couverture restaurée et/ou pelliculée   | <input type="checkbox"/> Pages restored and/or laminated/<br>Pages restaurées et/ou pelliculées  |
| <input type="checkbox"/> Cover title missing/<br>Le titre de couverture manque  | <input checked="" type="checkbox"/> Pages discoloured, stained or foxed/<br>Pages décolorées, tachetées ou piquées   |
| <input type="checkbox"/> Coloured maps/<br>Cartes géographiques en couleur  | <input type="checkbox"/> Pages detached/<br>Pages détachées  |
| <input type="checkbox"/> Coloured ink (i.e. other than blue or black)/<br>Encre de couleur (i.e. autre que bleue ou noire)  | <input type="checkbox"/> Showthrough/<br>Transparence  |
| <input type="checkbox"/> Coloured plates and/or illustrations/<br>Planches et/ou illustrations en couleur   | <input type="checkbox"/> Quality of print varies/<br>Qualité inégale de l'impression   |
| <input type="checkbox"/> Bound with other material/<br>Relié avec d'autres documents  | <input type="checkbox"/> Includes supplementary material/<br>Comprend du matériel supplémentaire   |
| <input type="checkbox"/> Tight binding may cause shadows or distortion along interior margin/<br>La reliure serrée peut causer de l'ombre ou de la distorsion le long de la marge intérieure  | <input type="checkbox"/> Only edition available/<br>Seule édition disponible   |
| <input type="checkbox"/> Blank leaves added during restoration may appear within the text. Whenever possible, these have been omitted from filming/<br>Il se peut que certaines pages blanches ajoutées lors d'une restauration apparaissent dans le texte, mais, lorsque cela était possible, ces pages n'ont pas été filmées. | <input checked="" type="checkbox"/> Pages wholly or partially obscured by errata slips, tissues, etc., have been refilmed to ensure the best possible image/<br>Les pages totalement ou partiellement obscurcies par un feuillet d'errata, une pelure, etc., ont été filmées à nouveau de façon à obtenir la meilleure image possible. |
| <input type="checkbox"/> Additional comments:/<br>Commentaires supplémentaires:   |  |

This item is filmed at the reduction ratio checked below/  
Ce document est filmé au taux de réduction indiqué ci-dessous.

10X	12X	14X	16X	18X	20X	22X	24X	26X	28X	30X	32X
									✓		

The copy filmed here has been reproduced thanks to the generosity of:

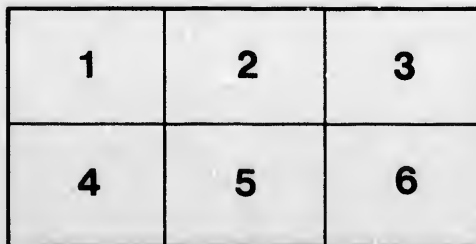
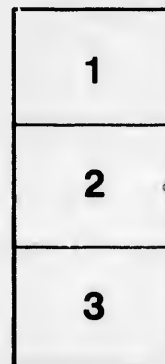
Library of the Public  
Archives of Canada

The images appearing here are the best quality possible considering the condition and legibility of the original copy and in keeping with the filming contract specifications.

Original copies in printed paper covers are filmed beginning with the front cover and ending on the last page with a printed or illustrated impression, or the back cover when appropriate. All other original copies are filmed beginning on the first page with a printed or illustrated impression, and ending on the last page with a printed or illustrated impression.

The last recorded frame on each microfiche shall contain the symbol  $\rightarrow$  (meaning "CONTINUED"), or the symbol  $\nabla$  (meaning "END"), whichever applies.

Maps, plates, charts, etc., may be filmed at different reduction ratios. Those too large to be entirely included in one exposure are filmed beginning in the upper left hand corner, left to right and top to bottom, as many frames as required. The following diagrams illustrate the method:



L'exemplaire filmé fut reproduit grâce à la générosité de:

La bibliothèque des Archives  
publiques du Canada

Les images suivantes ont été reproduites avec le plus grand soin, compte tenu de la condition et de la netteté de l'exemplaire filmé, et en conformité avec les conditions du contrat de filmage.

Les exemplaires originaux dont la couverture en papier est imprimée sont filmés en commençant par le premier plat et en terminant soit par la dernière page qui comporte une empreinte d'impression ou d'illustration, soit par le second plat, selon le cas. Tous les autres exemplaires originaux sont filmés en commençant par la première page qui comporte une empreinte d'impression ou d'illustration et en terminant par la dernière page qui comporte une telle empreinte.

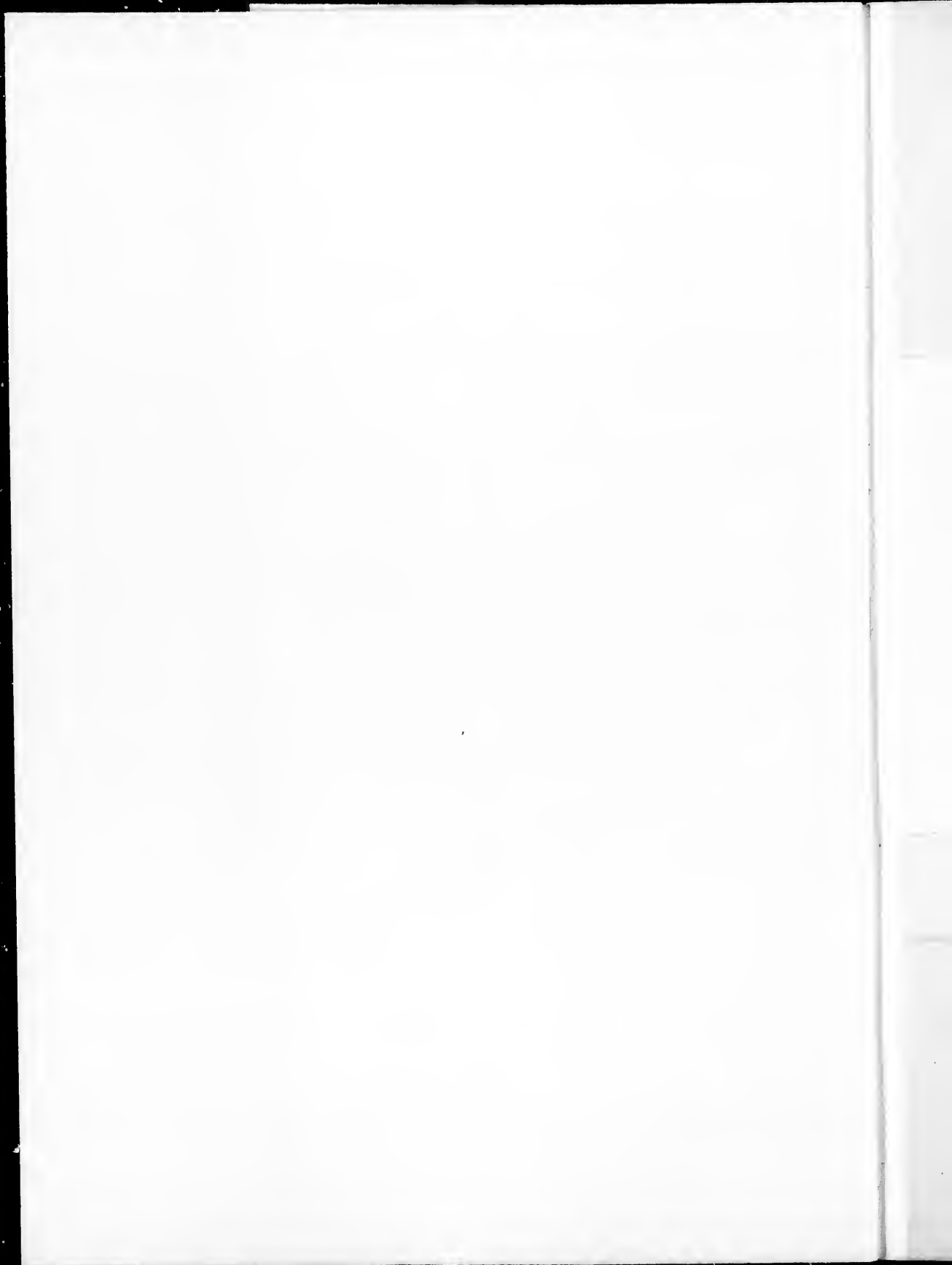
Un des symboles suivants apparaîtra sur la dernière image de chaque microfiche, selon le cas: le symbole  $\rightarrow$  signifie "A SUIVRE", le symbole  $\nabla$  signifie "FIN".

Les cartes, planches, tableaux, etc., peuvent être filmés à des taux de réduction différents. Lorsque le document est trop grand pour être reproduit en un seul cliché, il est filmé à partir de l'angle supérieur gauche, de gauche à droite, et de haut en bas, en prenant le nombre d'images nécessaire. Les diagrammes suivants illustrent la méthode.

rrata  
to

pelure,  
n à

32X



# Manitoba Anti-Disallowance Association.

WM. HESPELER, *President.*  
 JOSEPH WOLF, *Vice-President.*  
 G. A. ELLIOTT, *Recording Secretary.*  
 C. N. BELL, *Corresponding Secretary.*  
 G. P. CARUTHERS, *Treasurer.*

J. H. ASHLAWN,  
 J. D. WILLY,  
 J. H. BROCK,  
 F. B. ROBERTSON,  
 J. B. McKILLIGAN.

*Executive Committee.*

L. M. JONES,  
 ALEX. McDONALD,  
 KENNETH MacKENZIE,  
 GEO. PATTERSON,  
 ALF. PEARSON.

WINNIPEG, 24th SEPTEMBER, 1887.

*Reeve Municipality of*

SIR:—

It is the object of certain officials of the Canadian Pacific Railway Company and politicians in sympathy with that Company, to create the impression on the minds of the public of the Dominion and of Great Britain, that the whole agitation existing in this Province on the question of disallowance of railroad charters granted by the Legislature of Manitoba, is confined to the citizens of the City of Winnipeg, and they publicly and through the medium of their subsidized press, are continually reiterating this statement and declaring that the residents of this Province outside of Winnipeg are perfectly satisfied with the monopoly which is upony.

## ANTI-DISALLOWANCE.

### CONSTITUTION.

We citizens of the Province of Manitoba, irrespective of party politics, hereby agree to form ourselves into an association called The Manitoba Anti-Disallowance Association, for the purpose of opposing the arbitrary, unjust, and tyrannical action of the Dominion Government in disallowing the railway charters enacted by our Local Legislature and supporting the present monopoly of the Canadian Pacific Railway within the old Province of Manitoba; and we hereby pledge ourselves to stand by our Local Government and Legislature in every effort of theirs to break through that monopoly; and we resolve to use all justifiable means to resist the present invasion of the rights intended to be secured to every Province of the Dominion by the British North America Act; and we hereby affirm that:

"The policy of disallowance of local charters for the construction of railways within the limits of the old Province of Manitoba retards the national progress not only of Manitoba and the Northwest but of the Dominion at large."

"It discourages immigration."  
 "It prevents the natural development of trade between the Northwest and the other Provinces of the Dominion and in the Northwest itself, to which national development of trade competition in railway carriage between all the Provinces is essentially necessary."

It is therefore not a policy of progress, but a policy of retardation, injurious alike to Manitoba, the Northwest Territories, and the rest of the Dominion, and as such is inconsistent with the spirit of our constitution, and being in no way required by the terms of the contract with the C.P.

*Winnipeg  
 Sept 26/87*

If from any cause, it is impossible, at an early date, to get your council together, we beg to suggest that you personally give an endorsement of the platform presented, and that after having done so you organize a branch association and get many true friends of Manitoba to sign the constitution, sending us as soon as possible a list of the members. The by-laws, of course, can be altered to suit the circumstances of your local case, and it is presumed you would not require any entrance fee as is required by the Winnipeg Branch which has printing and other expenses to meet.

It is essentially necessary that no time be lost in making the organization large and influential so that its strength when published in Canada and Great Britain will counteract the baneful effect of Sir George Stephen's misleading and untruthful statements.

Our enemies are crafty and are not hesitating to adopt any means to give a false color to our actions, Sir George Stephen deliberately misquoting extracts from the wording of the Canadian Pacific Railway Company's charter, in his attempt to mislead the shareholders of the Company, and his subsidized press are daily grinding out falsehoods. We must therefore take every honorable means within our reach to expose their infamous methods, by giving the facts to the world.

Your kind assistance is therefore urgently requested by the Council of this Association, who feel assured that you fully realize the gravity of the situation and the necessity for prompt action.

By direction of the Association,

CHAS. N. BELL,  
*Corresponding Secretary.*

are given.

shareholders of the Canadian Pacific Rail-

its effects on the Province itself. The international press are printed and read abroad with every enterprise in the Province has already imitation, like those which have preceded it, stand the facts and discover the motives of

these words:

fluence of a certain kind, who are working and when such men control an important lie excitement there is danger that they

the resolutions passed by municipalities by the Manitoba Legislature to carry on the

municipal councils in all parts of the Province Canadian Pacific officials, so that the share-contrary to the expectations of Sir George

allowance Association which is being largely the matter before your council at once so on, and the truth be made known to our



# Manitoba Anti-Disallowance Association.

WM. HESPELER, *President.*  
JOSEPH WOLF, *Vice-President.*  
G. A. F. JOFF, *Recording Secretary.*  
C. N. BELL, *Corresponding Secretary.*  
G. E. CARBITTERS, *Treasurer.*

J. H. ASHDOWN,  
R. J. WHITLA,  
J. H. BROCK,  
F. H. ROBERTSON,  
J. B. McKILLIGAN.

*Executive Committee.*

L. M. JONES,  
ALEX. McDONALD,  
KENNETH MacKENZIE,  
GEO. PATTERSON,  
ALE. PRARSON.

WINNIPEG, 24th SEPTEMBER, 1887.

*Reeve Municipality of*

SIR:—

It is the object of certain officials of the Canadian Pacific Railway Company and politicians in sympathy with that Company, to create the impression on the minds of the public of the Dominion and of Great Britain, that the whole agitation existing in this Province on the question of disallowance of railroad charters granted by the Legislature of Manitoba, is confined to the citizens of the City of Winnipeg, and they publicly and through the medium of their subsidized press, are continually reiterating this statement and declaring that the residents of this Province outside of Winnipeg are perfectly satisfied with the monopoly which is at present unjustly enjoyed by the Canadian Pacific Railway Company.

As examples of the utterances of this description, two are herein given.

Sir George Stephen, in his letter recently addressed to the shareholders of the Canadian Pacific Railway Company, uses the following words:

"The present agitation in Winnipeg is chiefly damaging in its effects on the Province itself. The intemperate, sensational and ridiculous utterances of a section of the local press are printed and read abroad with alarm, and the effects upon emigration and upon the credit of every enterprise in the Province has already been most serious. Your directors believe, however, that this agitation, like those which have preceded it, will disappear as soon as the people of the country come to understand the facts and discover the motives of those by whom it was created."

W. C. VanHorne, the vice-president of the C. P. R. Co., used these words:

"There are a dozen or more men in Winnipeg, having a prominence of a certain kind, who are working for annexation because they think it will suit their personal ends, and when such men control an important section of the public press and succeed in working up a great public excitement there is danger that they may turn it in the direction they want it to go."

Of course these gentlemen ignore completely the existence of the resolutions passed by municipalities in all parts of Manitoba, condemning disallowance and encouraging the Manitoba Legislature to carry on the work of completing the Red River Valley road.

It is extremely advisable at this present time that the municipal councils in all parts of the Province should speak out again and repudiate the false assertions of the Canadian Pacific officials, so that the shareholders of that company will be placed in possession of the facts, contrary to the expectations of Sir George Stephen.

You will find enclosed a platform of the Manitoba Anti-Disallowance Association which is being largely subscribed to here, and it is our sincere hope that you will bring the matter before your council at once so that they can endorse the position taken therein by this Association, and the truth be made known to our friends in the east and in Great Britain.

If from any cause, it is impossible, at an early date, to get your council together, we beg to suggest that *you personally* give an endorsement of the platform presented, and that after having done so you organize a branch association and get many true friends of Manitoba to sign the constitution, sending us as soon as possible a list of the members. The by-laws, of course, can be altered to suit the circumstances of your local case, and it is presumed you would not require any entrance fee as is required by the Winnipeg Branch which has printing and other expenses to meet.

It is essentially necessary that no time be lost in making the organization large and influential so that its strength when published in Canada and Great Britain will counteract the baneful effect of Sir George Stephen's misleading and untruthful statements.

Our enemies are crafty and are not hesitating to adopt any means to give a false color to our actions, Sir George Stephen deliberately misquoting extracts from the wording of the Canadian Pacific Railway Company's charter, in his attempt to mislead the shareholders of the Company, and his subsidized press are daily grinding out falsehoods. We must therefore take every honorable means within our reach to expose their infamous methods, by giving the facts to the world.

Your kind assistance is therefore urgently requested by the Council of this Association, who feel assured that you fully realize the gravity of the situation and the necessity for prompt action.

By direction of the Association,

CHAS. N. BELL,  
*Corresponding Secretary.*



