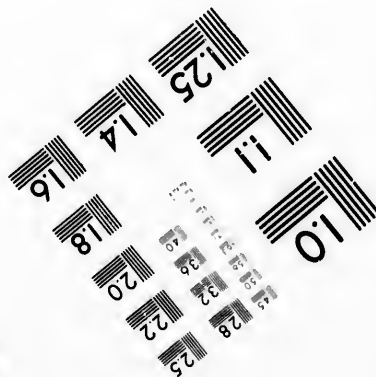
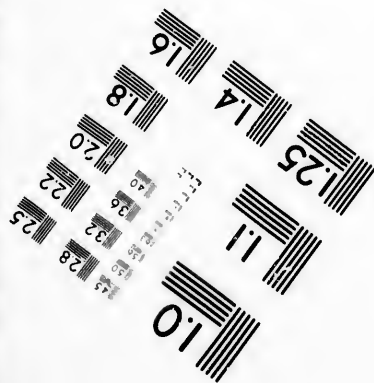
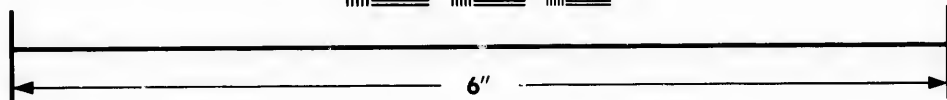
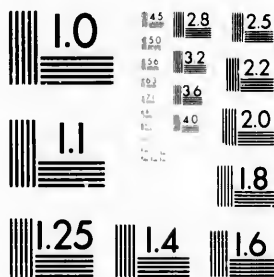


**IMAGE EVALUATION
TEST TARGET (MT-3)**



**Photographic
Sciences
Corporation**

23 WEST MAIN STREET
WEBSTER, N.Y. 14580
(716) 872-4503

**CIHM/ICMH
Microfiche
Series.**

**CIHM/ICMH
Collection de
microfiches.**



Canadian Institute for Historical Microreproductions

Institut canadien de microreproductions historiques

1980

Technical and Bibliographic Notes/Notes techniques et bibliographiques

The Institute has attempted to obtain the best original copy available for filming. Features of this copy which may be bibliographically unique, which may alter any of the images in the reproduction, or which may significantly change the usual method of filming, are checked below.

L'Institut a microfilmé le meilleur exemplaire qu'il lui a été possible de se procurer. Les détails de cet exemplaire qui sont peut-être uniques du point de vue bibliographique, qui peuvent modifier une image reproduite, ou qui peuvent exiger une modification dans la méthode normale de filmage sont indiqués ci-dessous.

- Coloured covers/
Couverture de couleur
- Covers damaged/
Couverture endommagée
- Covers restored and/or laminated/
Couverture restaurée et/ou pelliculée
- Cover title missing/
Le titre de couverture manque
- Coloured maps/
Cartes géographiques en couleur
- Coloured ink (i.e. other than blue or black)/
Encre de couleur (i.e. autre que bleue ou noire)
- Coloured plates and/or illustrations/
Planches et/ou illustrations en couleur
- Bound with other material/
Relié avec d'autres documents
- Tight binding may cause shadows or distortion along interior margin/
La reliure serrée peut causer de l'ombre ou de la distortion le long de la marge intérieure
- Blank leaves added during restoration may appear within the text. Whenever possible, these have been omitted from filming/
Il se peut que certaines pages blanches ajoutées lors d'une restauration apparaissent dans le texte, mais, lorsque cela était possible, ces pages n'ont pas été filmées.
- Additional comments:/
Commentaires supplémentaires:

- Coloured pages/
Pages de couleur
- Pages damaged/
Pages endommagées
- Pages restored and/or laminated/
Pages restaurées et/ou pelliculées
- Pages discoloured, stained or foxed/
Pages décolorées, tachetées ou piquées
- Pages detached/
Pages détachées
- Showthrough/
Transparence
- Quality of print varies/
Qualité inégale de l'impression
- Includes supplementary material/
Comprend du matériel supplémentaire
- Only edition available/
Seule édition disponible
- Pages wholly or partially obscured by errata slips, tissues, etc., have been refilmed to ensure the best possible image/
Les pages totalement ou partiellement obscurcies par un feuillet d'errata, une pelure, etc., ont été filmées à nouveau de façon à obtenir la meilleure image possible.

This item is filmed at the reduction ratio checked below/
Ce document est filmé au taux de réduction indiqué ci-dessous.

10X	14X	18X	22X	26X	30X	
<input type="checkbox"/>	<input type="checkbox"/>	<input type="checkbox"/>	<input checked="" type="checkbox"/>	<input type="checkbox"/>	<input type="checkbox"/>	
	12X	16X	20X	24X	28X	32X

The copy filmed here has been reproduced thanks to the generosity of:

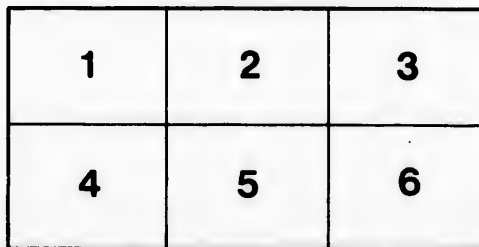
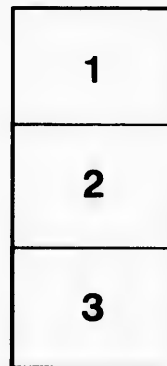
Saint John Regional Library

The images appearing here are the best quality possible considering the condition and legibility of the original copy and in keeping with the filming contract specifications.

Original copies in printed paper covers are filmed beginning with the front cover and ending on the last page with a printed or illustrated impression, or the back cover when appropriate. All other original copies are filmed beginning on the first page with a printed or illustrated impression, and ending on the last page with a printed or illustrated impression.

The last recorded frame on each microfiche shall contain the symbol \rightarrow (meaning "CONTINUED"), or the symbol ∇ (meaning "END"), whichever applies.

Maps, plates, charts, etc., may be filmed at different reduction ratios. Those too large to be entirely included in one exposure are filmed beginning in the upper left hand corner, left to right and top to bottom, as many frames as required. The following diagrams illustrate the method:



L'exemplaire filmé fut reproduit grâce à la générosité de:

Saint John Regional Library

Les images suivantes ont été reproduites avec le plus grand soin, compte tenu de la condition et de la netteté de l'exemplaire filmé, et en conformité avec les conditions du contrat de filmage.

Les exemplaires originaux dont la couverture en papier est imprimée sont filmés en commençant par le premier plat et en terminant soit par la dernière page qui comporte une empreinte d'impression ou d'illustration, soit par le second plat, selon le cas. Tous les autres exemplaires originaux sont filmés en commençant par la première page qui comporte une empreinte d'impression ou d'illustration et en terminant par la dernière page qui comporte une telle empreinte.

Un des symboles suivants apparaîtra sur la dernière image de chaque microfiche, selon le cas: le symbole \rightarrow signifie "A SUIVRE", le symbole ∇ signifie "FIN".

Les cartes, planches, tableaux, etc., peuvent être filmés à des taux de réduction différents. Lorsque le document est trop grand pour être reproduit en un seul cliché, il est filmé à partir de l'angle supérieur gauche, de gauche à droite, et de haut en bas, en prenant le nombre d'images nécessaire. Les diagrammes suivants illustrent la méthode.

errata
to

pelure,
on à

FREE PUBLIC LIBRARY.

ST. JOHN, N. B.

PRESENTED

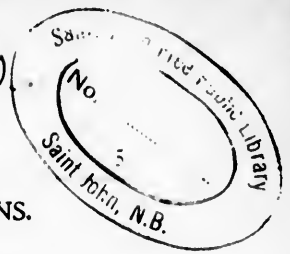
Accession 664^a Class

2A
917.15
Jae

April issue 1900.

PORTLAND HOME JOURNAL.

NEW BRUNSWICK AND ITS ATTRACTIONS.



IF the question were propounded why the people of New Brunswick are proud of the scenery and climate of the Province and the advantages for sportsman and naturalist which it affords, the answer might well be because they are all excellent and all varied. It can indeed be honestly claimed that in no Province or State in North America can monotony in one's immediate physical surroundings be so readily and rapidly escaped, in summer, as in this portion of old Acadia.

A general invitation is extended to those abroad who contemplate taking a

pasturage and farms with crops of oats and different kinds of vegetables, lies between them and Saint Andrews, and beyond is Passamaquoddy Bay. If from the neighboring republic they may find some comfort in the thought that, by taking a short trip across a ferry from the town, they can reach the State of Maine. If students of American history, they may be reminded that, within a few miles lies the island on which the French pioneers to Acadia passed their first winter. Saint Andrews is a quaint old place in which, years ago, a bell was rung at nine o'clock every night in the year, long before the revival of the curfew was suggested by reformers. The town is



Scene Near the Jemseg.

holiday but have not determined where it shall be spent, to try to imagine that they see in detail what can scarcely be described in outline in this brief sketch.

Let it be supposed that the invitation is accepted and that at least one of either sex beholds, in the first place what is visible from the top of Chamcook mountain toward the South. A stretch of gently sloping land, consisting largely of

full of contrasts, sumptuous hotels and dwelling places used by summer residents, standing in the midst of the less pretentious homes of the permanent inhabitants. The locality presents excellent facilities for bathing in either calm water or somewhat modified surf, for deep sea fishing, boating, yachting, and, in later autumn, for shooting ducks. At a distance not exceeding

664a

twenty miles are the Magaguadavic Lakes abounding in trout and surrounded by hills covered with trees, amongst which are partridge, woodcock and deer. Rivers in the vicinity also flow into the bay and its inlets, and may be ascended for many miles towards their sources, through scenery always picturesque and often unique. If bold coast lines and wild effects of tossing waves and twisted clouds, and views of close reefed vessels fighting the gales are desired, Grand Manan is near at hand. And so is Campobello where new mown hay and sea-wrack mingle their odors, and cow bells and ocean birds each contribute to the volume of summer sounds.

How very different is the scene on the

and after making a short portage to reach the Gulf of Saint Lawrence, by splendid fishing streams through most impressive scenery.

From Tobique the Saint John flows between the hilly banks and natural terraces partly wooded but largely covered with farms and occasional orchards. Numerous towns and villages are passed of which Woodstock is most noteworthy, and at Kingsclear, a few miles above Fredericton, a group of pretty islands appears.

Fredericton, the capital of the Province, embowered in trees and rich in gardens, standing on a level space backed by hills, is never visited in summer without being admired. The University



The Beach at St. Martins, N. B.

upper waters of the river Saint John, two or three hundred miles from the sea. Few tourists go so far inland or have an idea of what they miss by not doing so. From Edmundston, or Grand Falls by canoe to Woodstock or Fredericton, is a charming trip. The fallstern a magnificent sight, and below until the Tobique is reached, the river rushes and tumbles through the forests. The course is southerly and it receives many tributary streams flowing from the eastward. It is not difficult to ascend several of these,

buildings on the height above the city are conspicuous and attractive: the Parliament and Government structures are admirable in conception and execution; and the Anglican Cathedral is regarded as perfect in architectural details and in surroundings.

Below Fredericton, the river gradually widening and, half way to the city of Saint John, increased in volume by contributions from two large lakes, glides between banks, at first low and then more elevated, largely under cultivation, or

great expanses of rich interval. Here and there cosy hamlets appear, and comfortable farm houses with barns and out-houses, and tasteful and attractive summer hostleries and cottages round which the birds are singing and the flowers in bloom.

To describe the rugged beauties of the regions through which such rivers as the Netapedia, Restigouche and Nepisiquit, abounding in fish, force their way, the eye of an artist and the powers of a poet are required. Nor would a sportsman readily credit, without seeing, true state-

season, snipe, curlew and plover are plentiful.

From the windows of the cars on the line of the Intercolonial railway, across the Province from east to west, a succession of views of thriving towns and villages, farms in a high state of cultivation with groups of cattle standing knee deep in grass or picturesque streams or reposing under graceful elms, brooks, lakes, inviting ravines, and uplands bounded by partly wooded hills, and usually found to be more attractive than the pages of a book which the traveller holds.



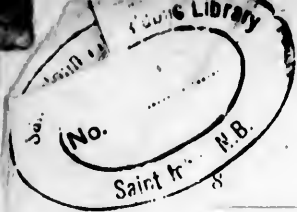
Scene Near the Nepisiquit River.

ments of catches, in these waters, of trout and salmon, and of the great battalions, comprising geese, brant, ducks and teal which are there visible to lead the sanguine and venturesome to try their luck.

Portions of Gloucester, Northumberland and Kent are devoid of woodland scenery, and the greater part of Westmoreland is entirely level, consisting of enormous areas of dyked marsh where cattle thrive and where also, in their

As for sport, the hunter can find moose, caribou and red deer in the wilder sections while partridges and smaller game may be shot in all the rural districts. Lakes and streams are plentiful throughout the Province, and in most of them trout are to be caught in quantities dependent, as elsewhere, upon the proximity or remoteness of populous centres.

The population consists mainly of those old English speaking Colonial or recent



PORTLAND HOME JOURNAL.

British stock, but partly of the descendants of the French Acadians, who continue to use the language and retain very many of the interesting and by no means un-aesthetic ways of their ancestors. The Indians are not numerous, but can always be found when wanted to sit for their pictures, paddle canoes, or serve as guides.

of New Brunswick, with a population of between forty and fifty thousand, is a handsome and well equipped city built on elevated land at a point where the noble river of the same name rushes through a narrow, rocky passage into the Bay of Fundy. In the immediate vicinity of the city are lovely nooks, delightful rural scenes, impressive vistas, rivers, lakes and



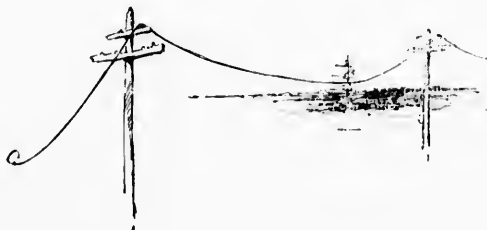
The Bridges, St. John.

The accommodation of inns, even in remote places, is usually good, and few are disposed to grumble at their fare when offered the products of the Province, including fresh fish, oysters, wild strawberries and buckwheat pancakes and maple syrup.

Saint John, the commercial metropolis

of New Brunswick, with a population of between forty and fifty thousand, is a handsome and well equipped city built on elevated land at a point where the noble river of the same name rushes through a narrow, rocky passage into the Bay of Fundy. In the immediate vicinity of the city are lovely nooks, delightful rural scenes, impressive vistas, rivers, lakes and

L. ALLEN JACK.



tion of
l. is a
built on
e noble
rough a
Bay of
y of the
il rural
kes and

ers. The
enes can
the daily
railway or
ed to any
part of the

S JACK.

